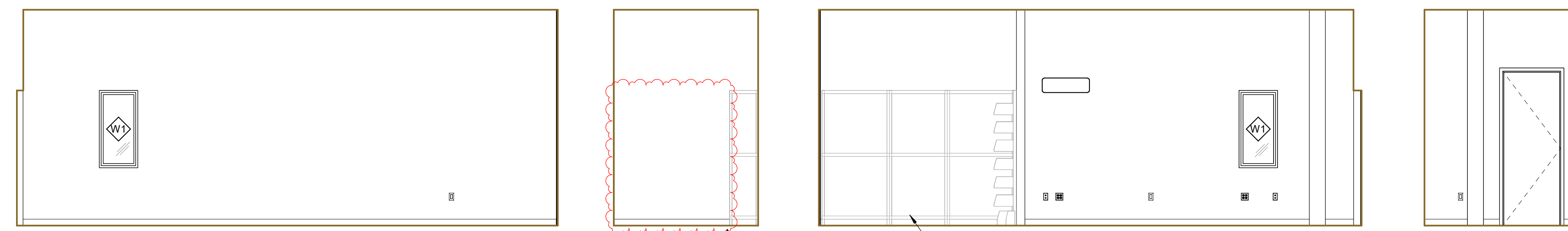
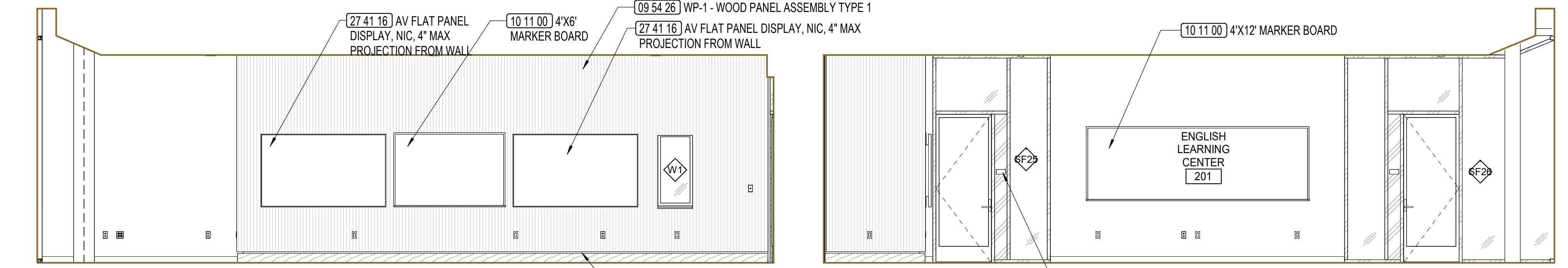


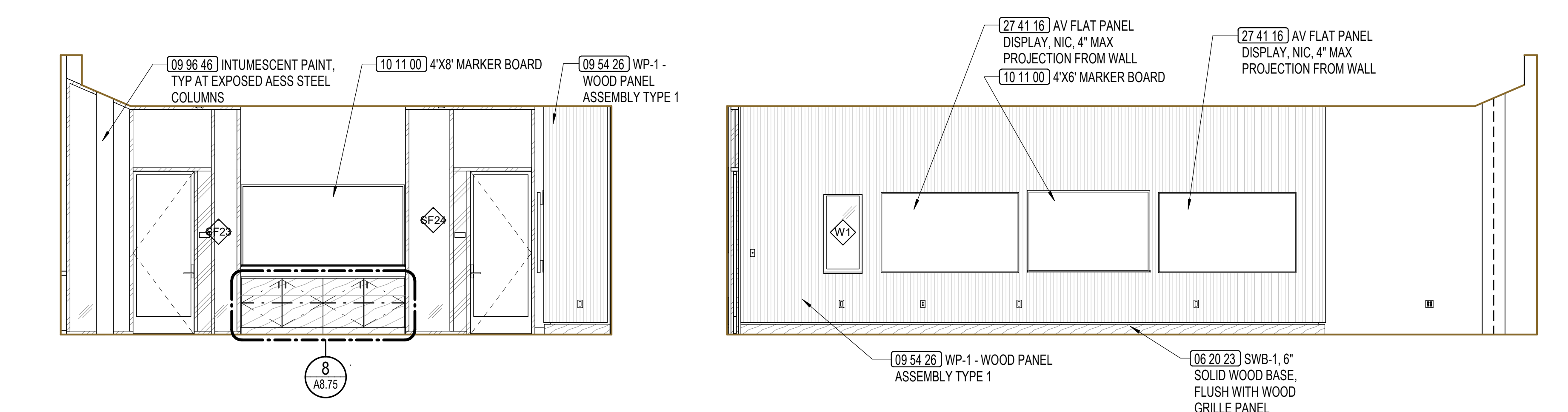
2S
L2 - GROUP STUDY ROOM (SM) 202
 A5.18 1/4" = 1'-0"



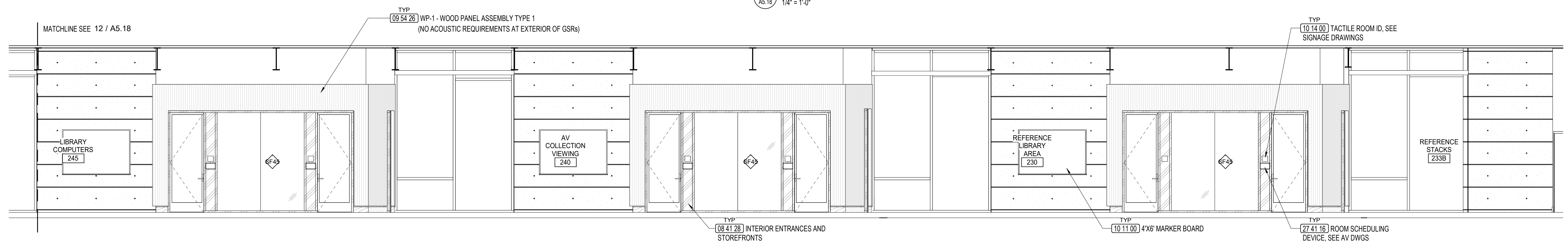
1N
L2 - ENGLISH LEARNING CENTER 201
 A5.18 1/4" = 1'-0"



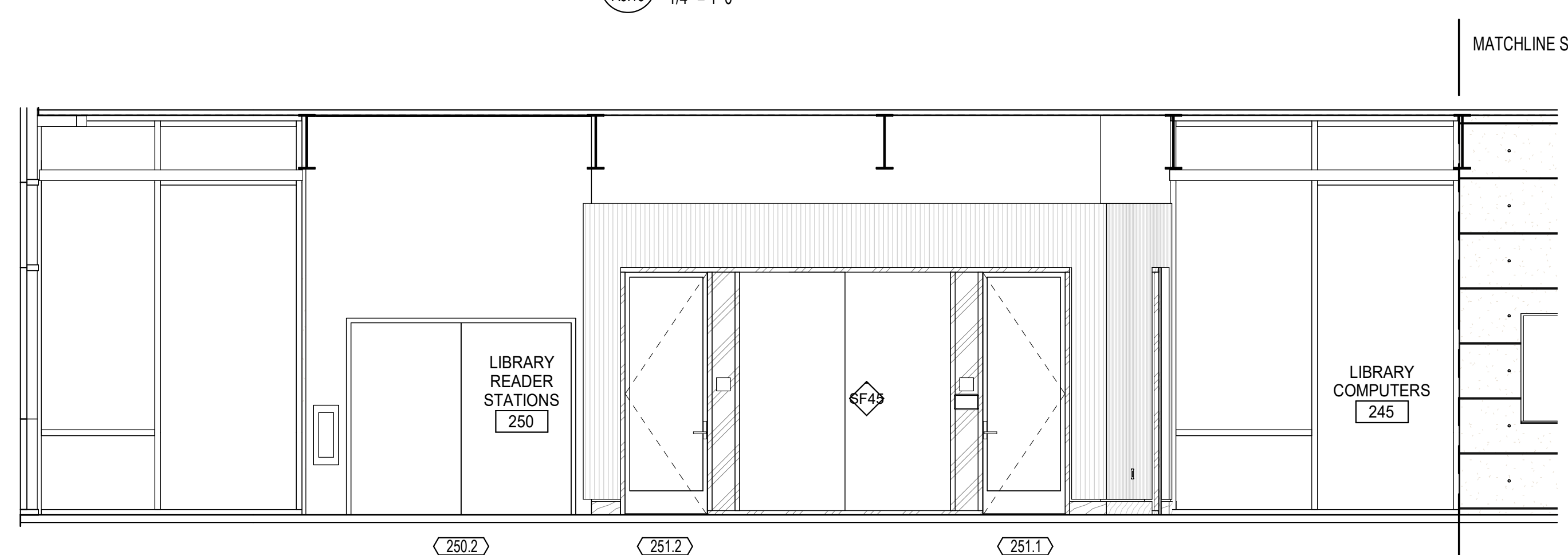
3E
L2 - WRITING STUDY CENTER 203
 A5.18 1/4" = 1'-0"



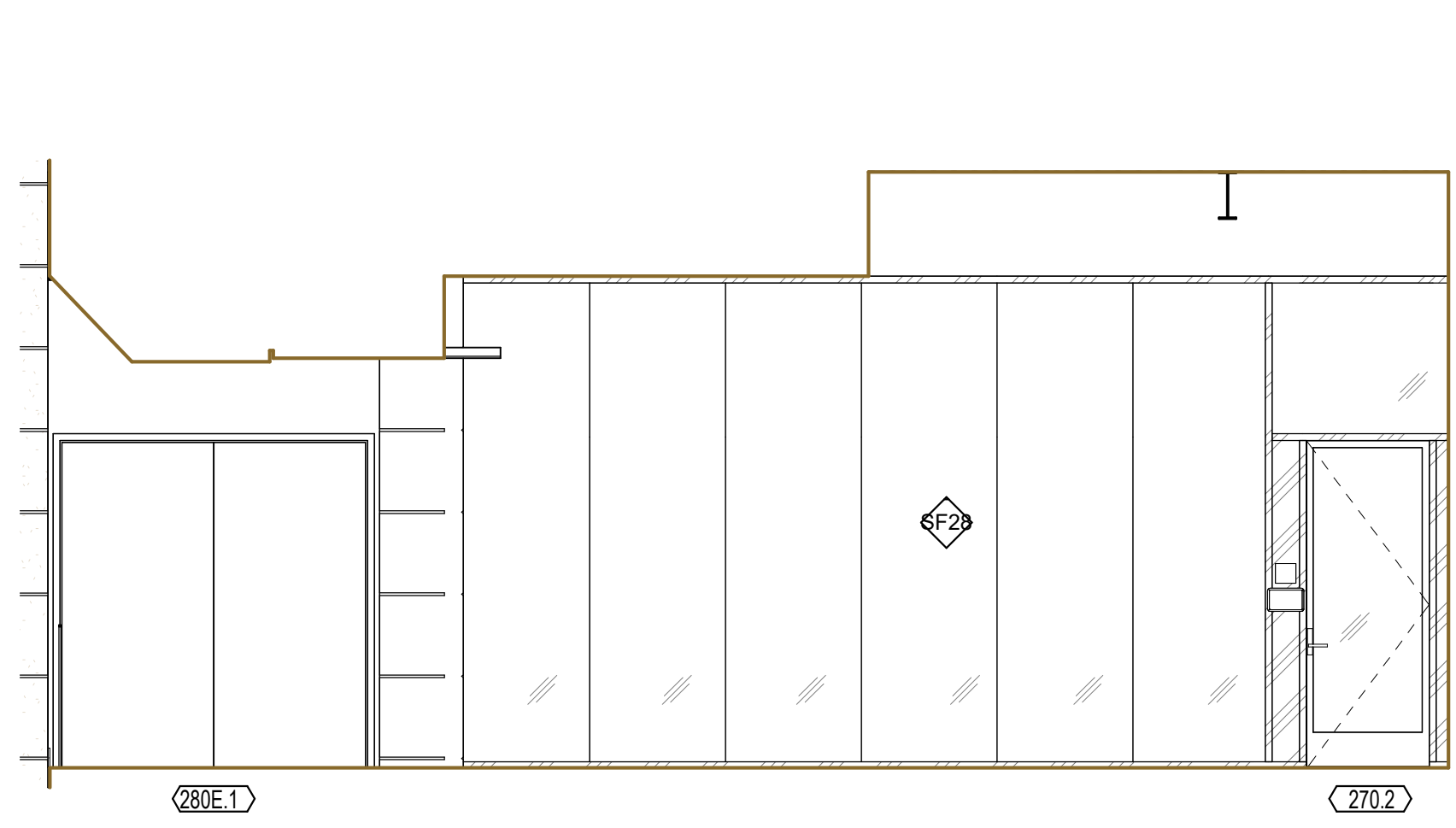
8
LEVEL 2 - LIBRARY SOUTH OPEN READING AREAS
 A5.18 1/4" = 1'-0"



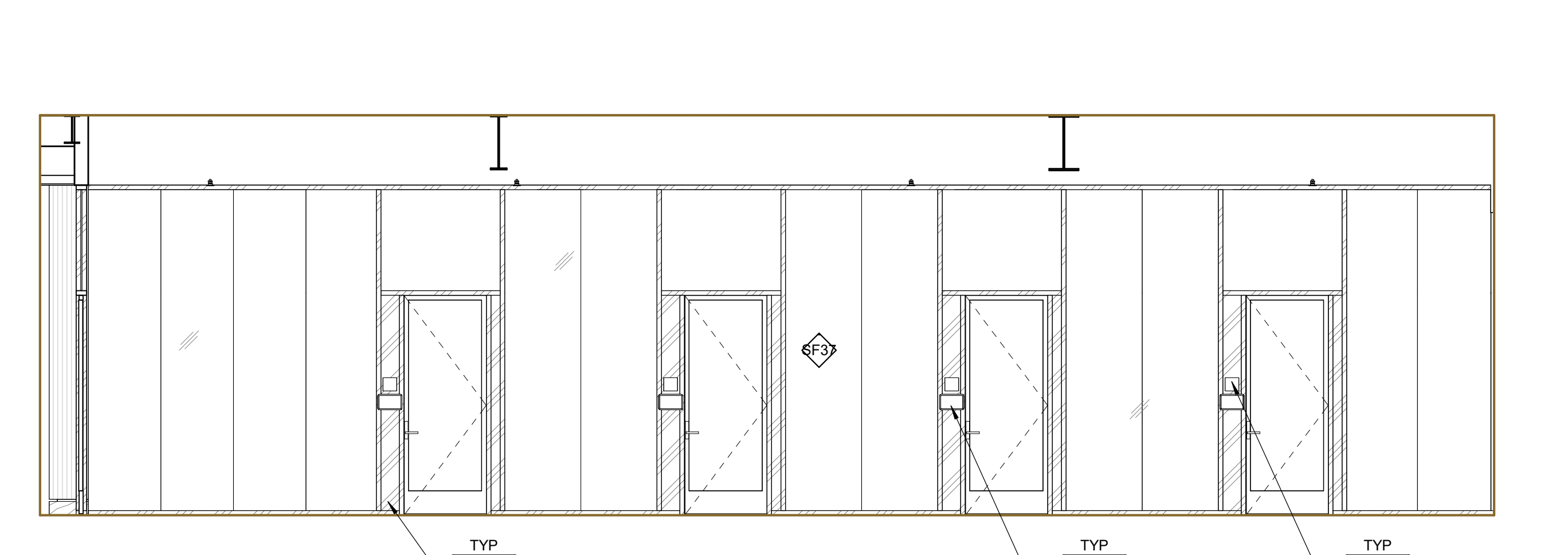
12
LEVEL 2 - LIBRARY SOUTH OPEN READING AREA 250
 A5.18 1/4" = 1'-0"



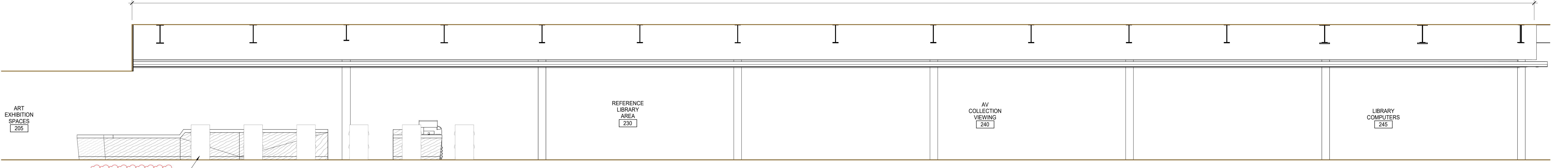
10N
L2 - LIBRARY READER STATIONS 260 - N
 A5.18 1/4" = 1'-0"



10E



13
L2 - LIBRARY READING ROOM SOFFIT SOUTH ELEVATION
 A5.18 1/4" = 1'-0"



GENERAL NOTES

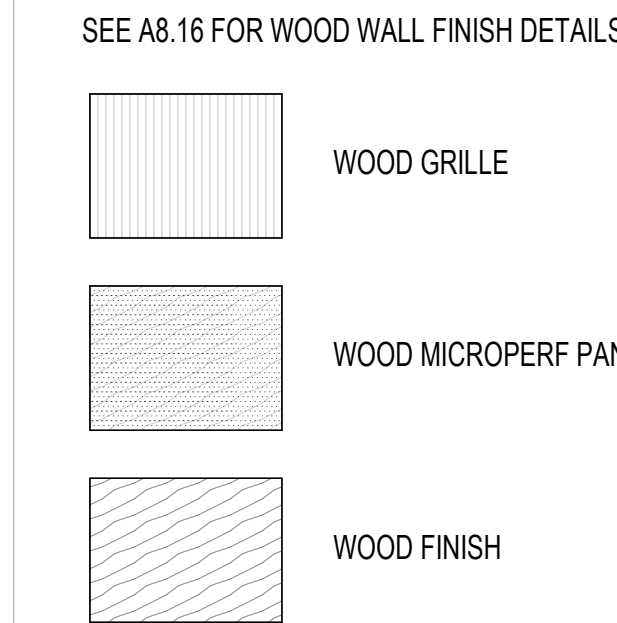
- SEE FLOOR PLANS FOR DOOR IDENTIFICATION
- SEE LAYOUT PLANS FOR PARTITION IDENTIFICATION
- SEE SHEET A2.51 FOR DOOR SCHEDULE
- SEE 44 SERIES FOR STAIR AND ELEVATOR SHEETS
- SEE SHEET A8.10 FOR INTERIOR WALL PARTITION TYPES
- SEE SHEET A8.16 FOR WALL FINISH ASSEMBLIES
- SEE SHEETS A8.51 & A8.52 FOR INTERIOR STOREFRONT AND WINDOW TYPES
- SEE SHEET A8.70 FOR CASEWORK TYPES
- SEE A8.10 FOR ROOM FINISH SCHEDULE
- APPLY 09.96.16 INTUMESCENT FIREPROOFING TO ALL EXPOSED STEEL STRUCTURE, INCLUDING COLUMNS, BEAMS, AND ATTACHMENTS TYP. SPRAY PRIMARY STRUCTURAL STEEL MEMBERS HIDDEN FROM VIEW WITH 07.08.00 APPLIED CEMENTITIOUS FIREPROOFING
- SEE STRUCTURAL DRAWINGS FOR BACKING DETAILS

KEYNOTE LEGEND

| Key Value | Keynote Text |
|--------------|--|
| 06.20 | 06.20.23 SWB-1, 6" SOLID WOOD BASE, FLUSH WITH WOOD GRILLE PANEL |
| 03.SWB1.2 | GRILLE PANEL |
| 08.41.28 | 08.41.28 INTERIOR ENTRANCES AND STOREFRONTS |
| 09.54.26.WP1 | 09.54.26 WP-1 - WOOD PANEL ASSEMBLY TYPE 1 |
| 09.96.46.A3 | 09.96.46 INTUMESCENT PAINT, TYP AT EXPOSED AESS STEEL COLUMNS |
| 10.11.00.A3 | 10.11.00 4'X6' MARKER BOARD |
| 10.11.00.A4 | 10.11.00 4'X8' MARKER BOARD |
| 10.11.00.A6 | 10.11.00 4'X12' MARKER BOARD |
| 10.14.00.C1 | 10.14.00 TACTILE ROOM ID, SEE SIGNAGE DRAWINGS |
| 10.14.00.C2 | 10.14.00 TACTILE EGRESS SIGN, SEE SIGNAGE DRAWINGS |
| 10.56.13 | 10.56.13 METAL STORAGE SHELVING, SEE SHELVING PLANS |
| 11.51.23.A2 | 11.51.23 SHELVING UNIT, SEE SHELVING PLANS |
| 27.41.16.A4 | 27.41.16 AV FLAT PANEL DISPLAY, NIC, 4" MAX PROJECTION FROM WALL |
| 27.41.16.A7 | 27.41.16 ROOM SCHEDULING DEVICE, SEE AV DWGS |

LEGEND

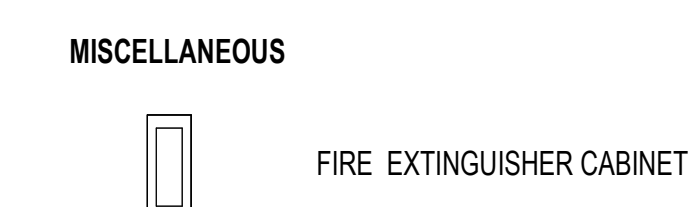
WOOD FINISHES



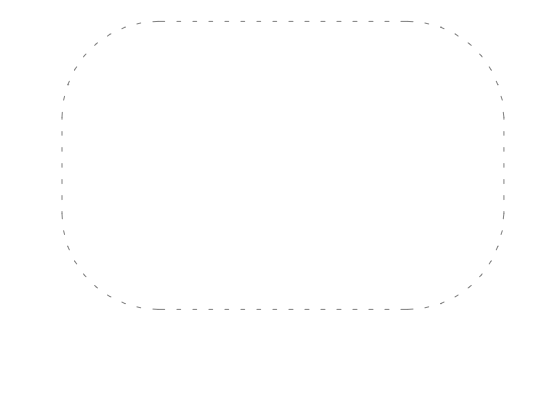
MISC FINISHES



MISCELLANEOUS



APPROVALS

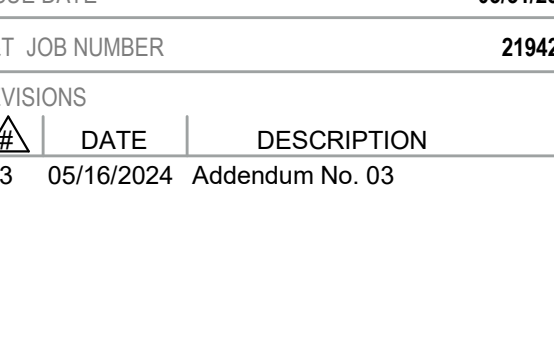
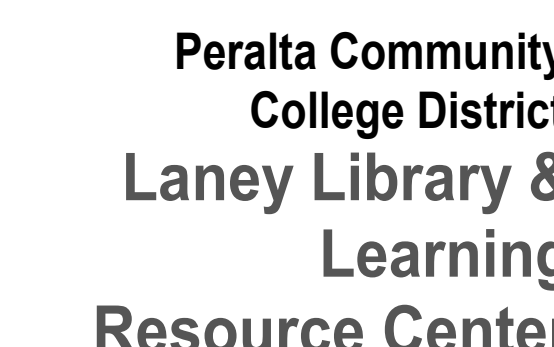
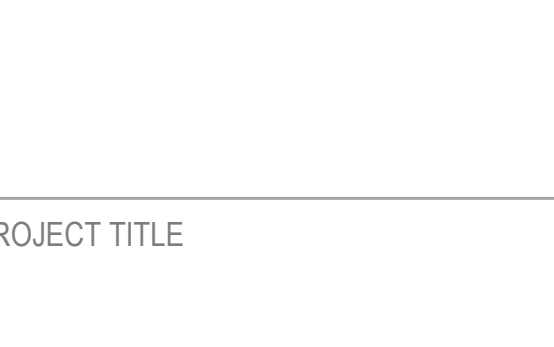
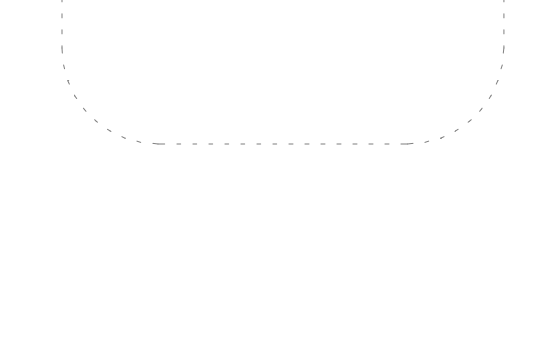
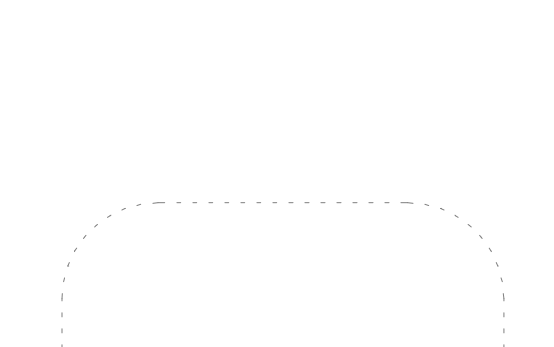
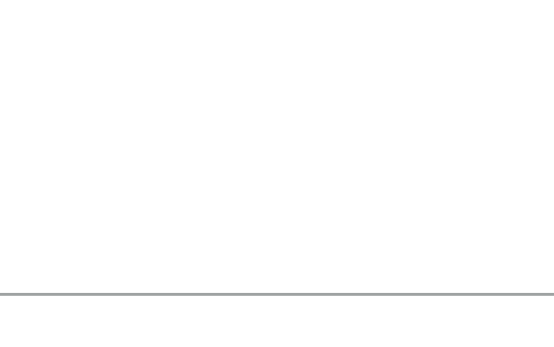
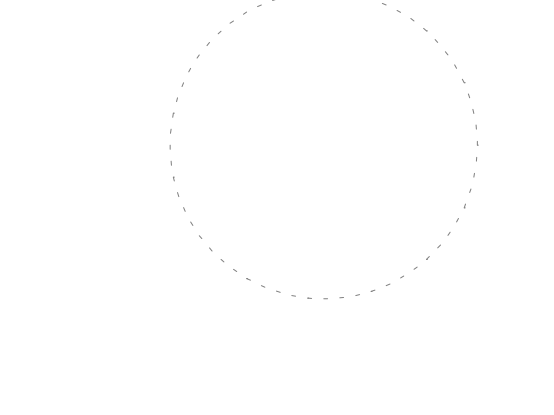


NOLL & TAM
 ARCHITECTS

729 Heinz Avenue
 Berkeley, CA 94710
 tel 510.542.2200
 fax 510.542.2201

CAVAGNERO
 MARK CAVAGNERO ASSOCIATES ARCHITECTS
 1848 Katherine Street, Suite 200
 San Francisco, California 94111
 www.cavagnero.com

SEAL



A5.18

SHEET NUMBER

INTERIOR ELEVATIONS - L2 201 - 250

ISSUE FOR BID

ISSUE DATE 03/31/23
 NAT. JOB NUMBER 2192

REVISIONS
 DATE DESCRIPTION
 3 05/16/2024 Addendum No. 03

PROJECT TITLE

**Peralta Community College District
 Laney Library & Learning Resource Center (Building 100 Replacement)**
 900 Fallon Street, Oakland, CA 94607

5/17/2024 1:30:05 PM Autodesk Docs:PCDD-Laney Library_L201PCDD-Laney Library_L201.rvt