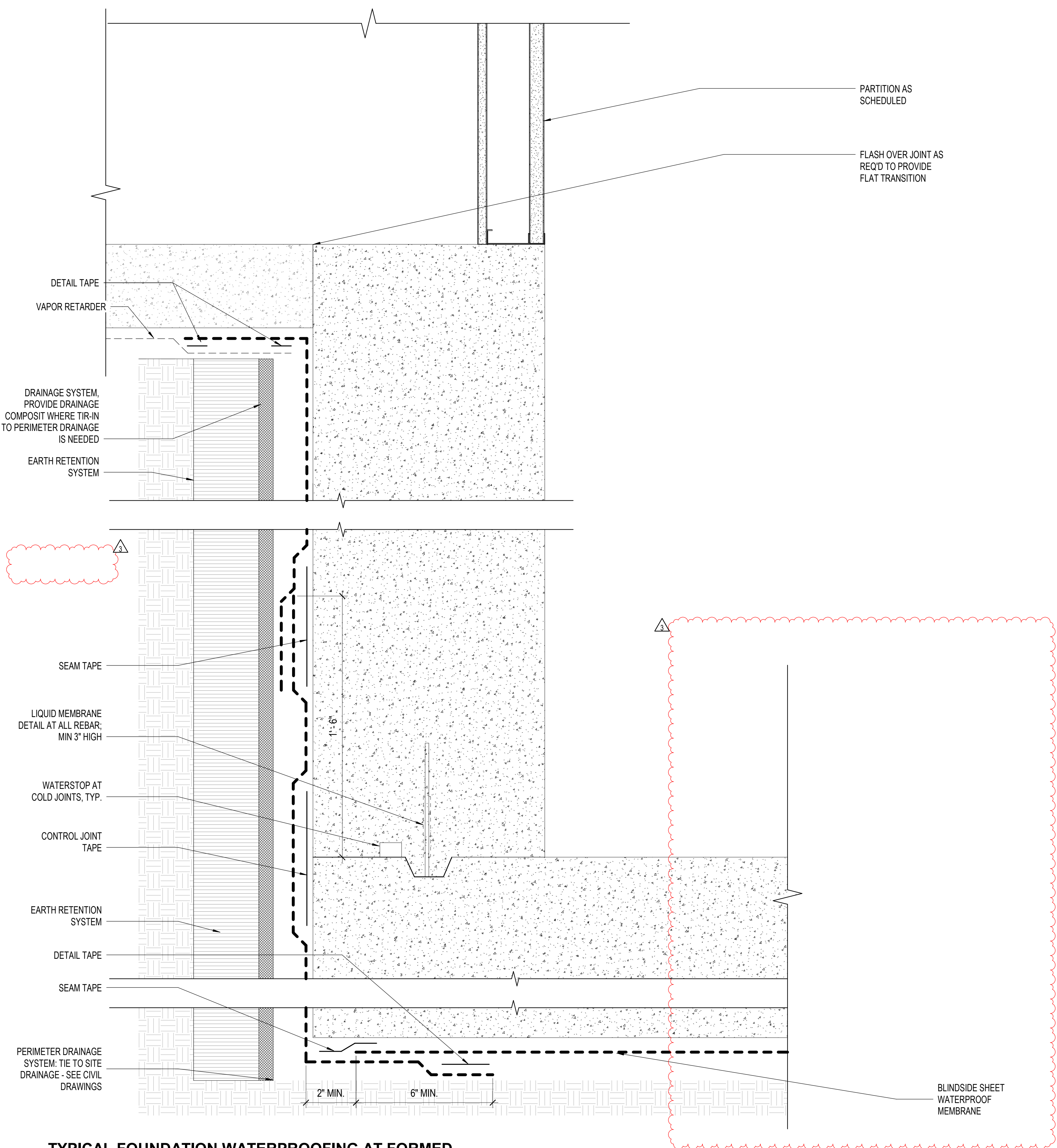
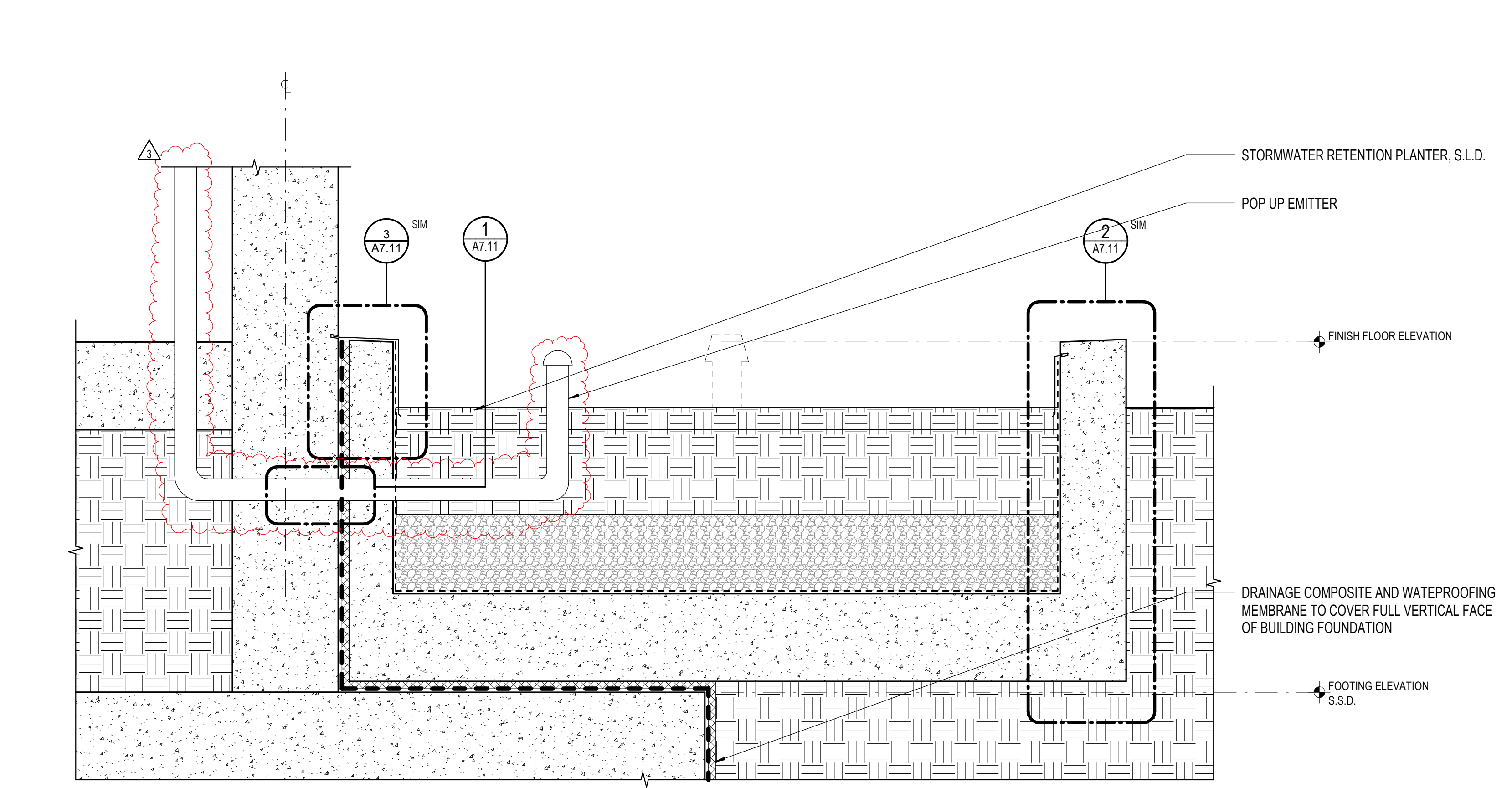
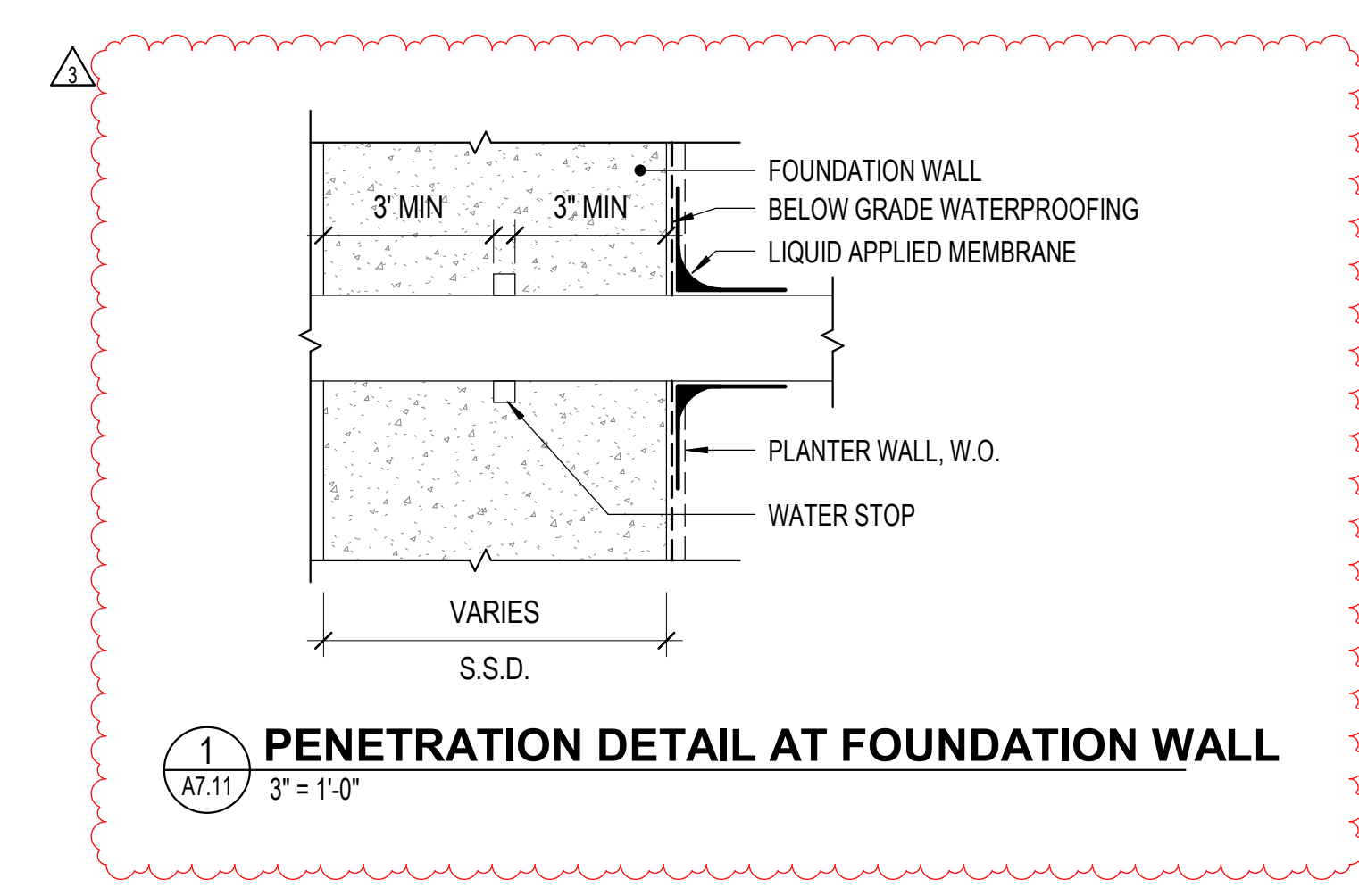


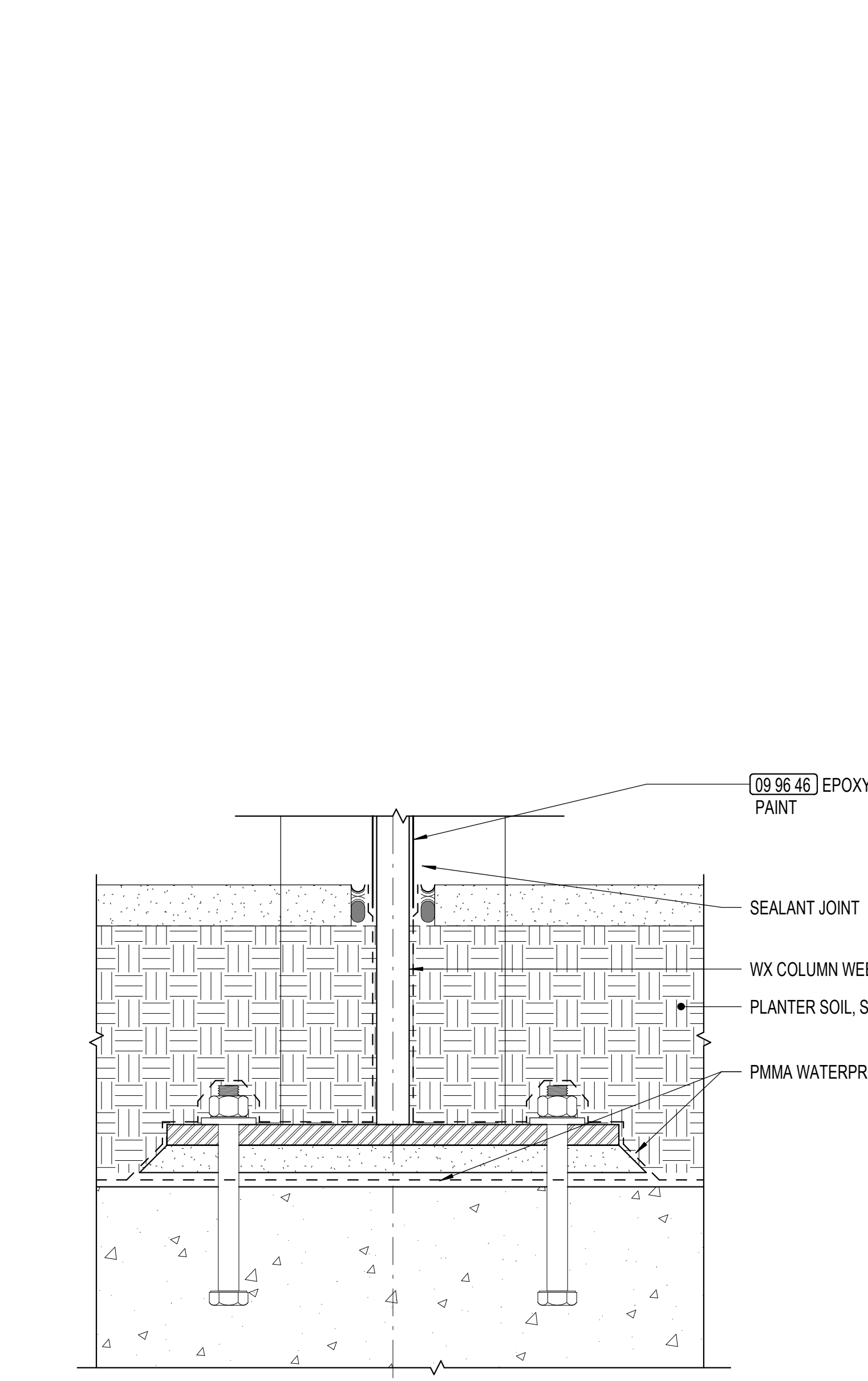
ISSUE DATE	03/19/23
NAT. JOB NUMBER	21942
REVISIONS	
DATE	DESCRIPTION
3 05/16/2024	Addendum No. 03



24 TYPICAL FOUNDATION WATERPROOFING AT FORMED WALL WITH PERMANENT FORMWORK
3" = 1'-0"



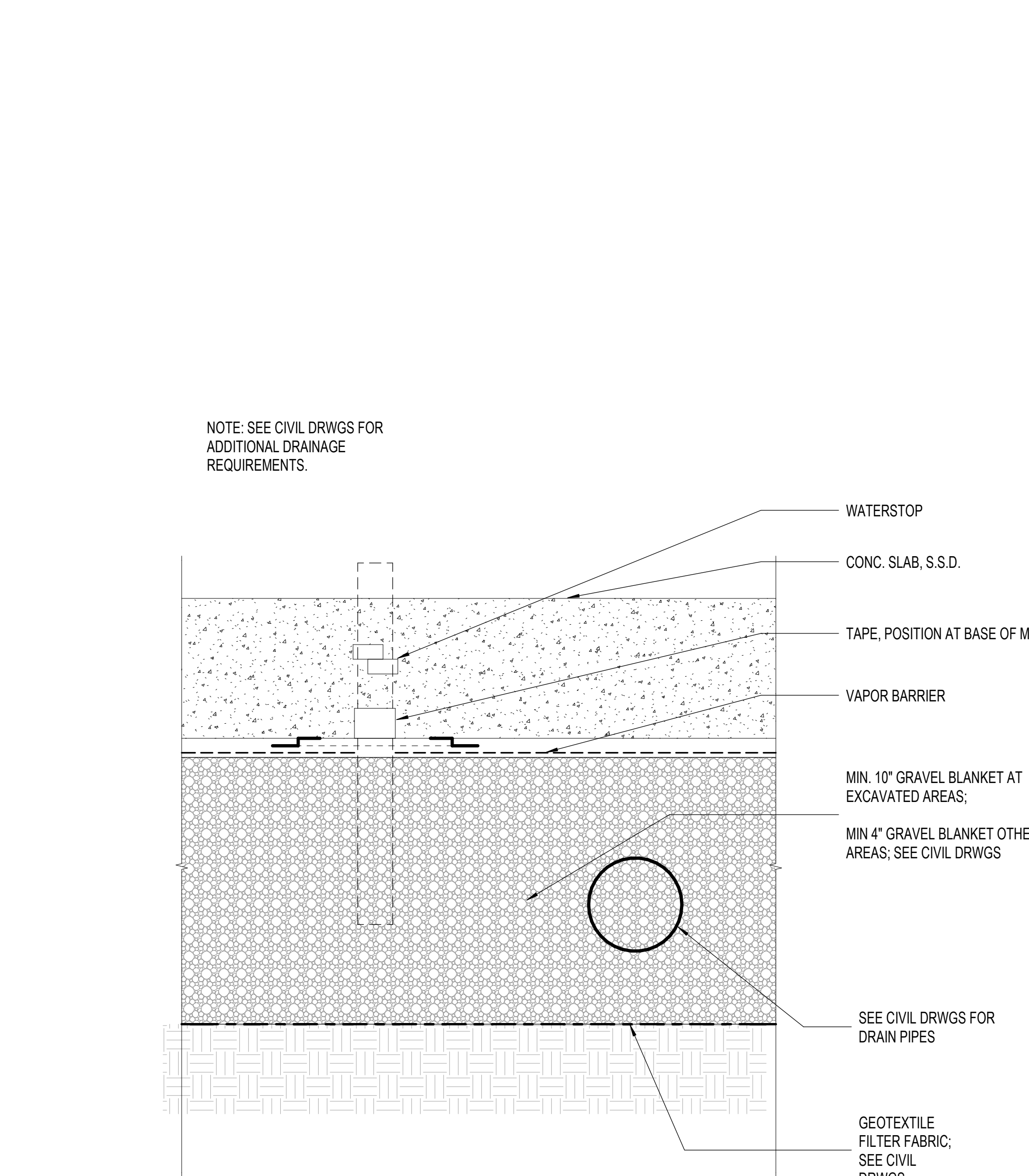
6 STORMWATER PLANTER AT CONTINUOUS FOOTING
1" = 1'-0"



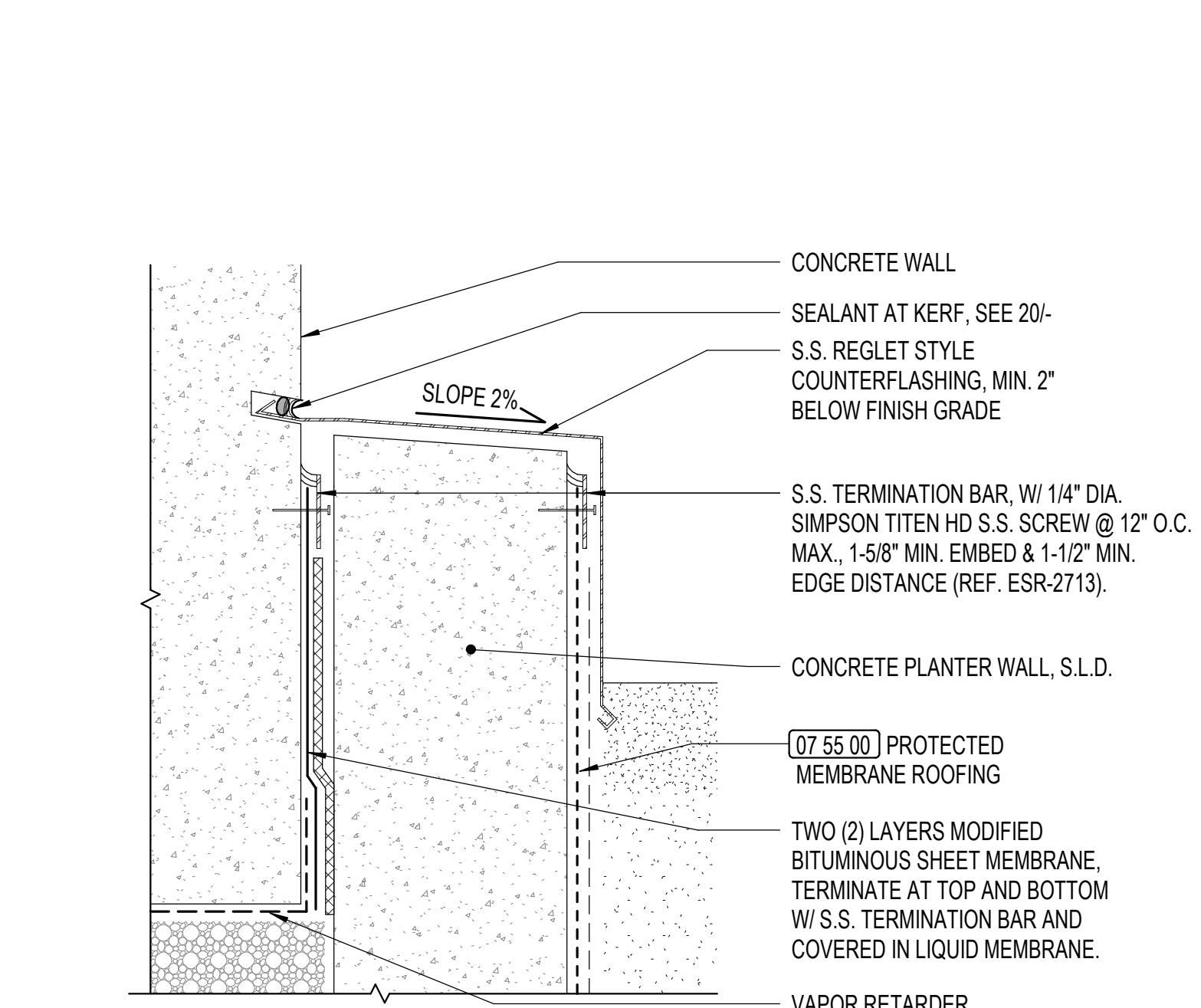
25 WEST COLUMN BASE
1 1/2" = 1'-0"



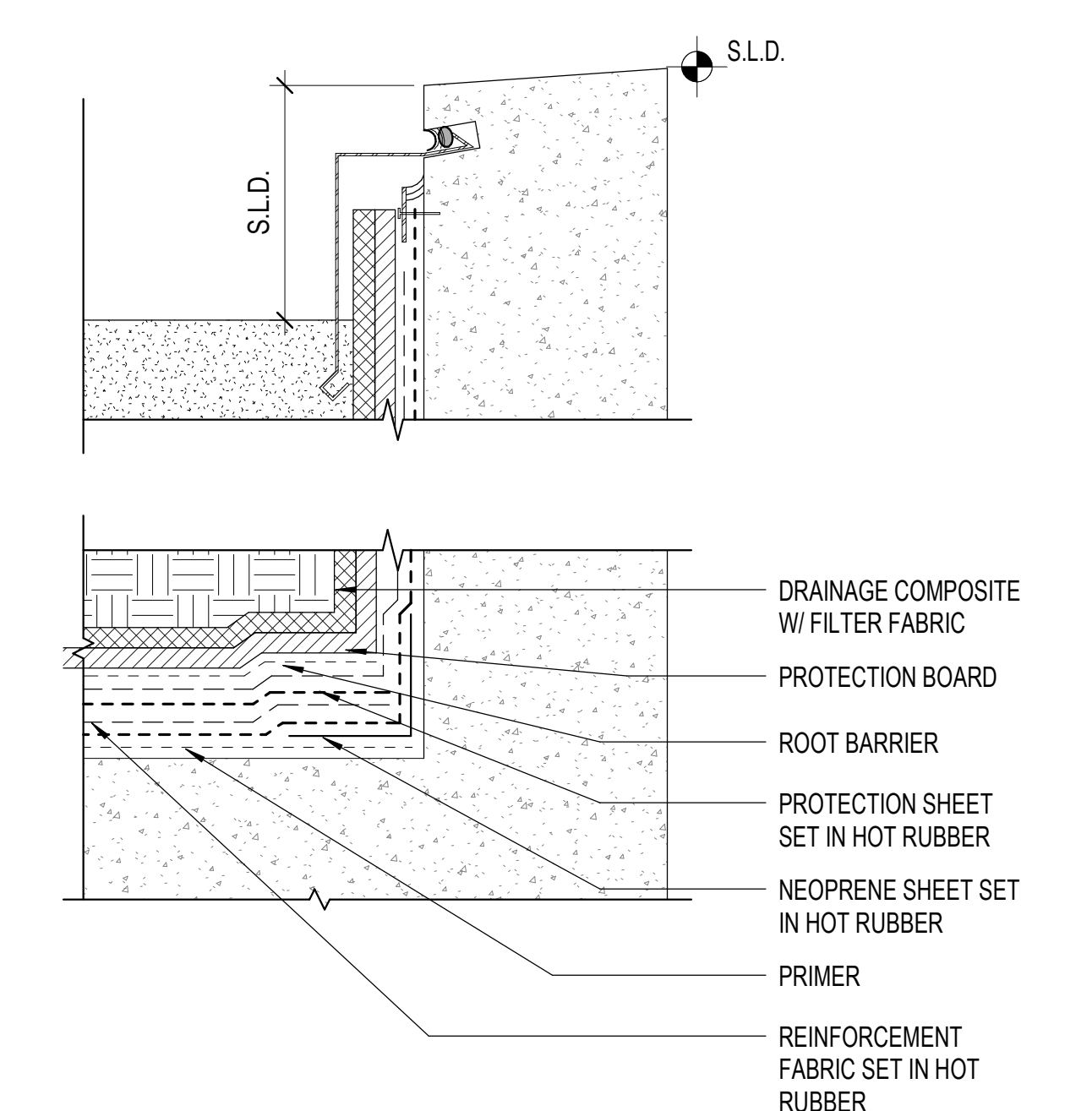
20 TYPICAL SAW-CUT REGLET SECTION
6" = 1'-0"



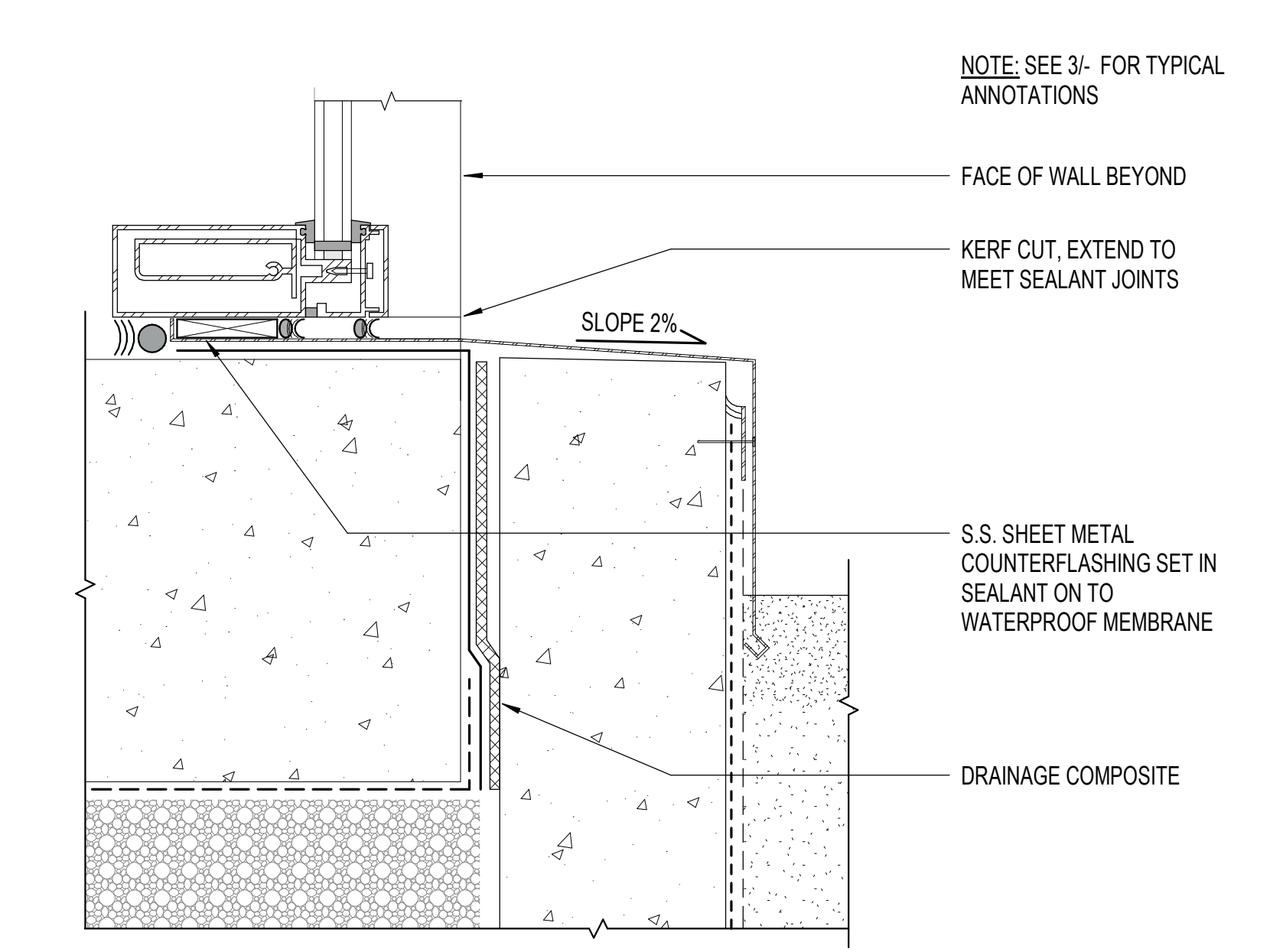
15 TYPICAL SUBSLAB DRAINAGE AND INSULATION
3" = 1'-0"



3 PLANter WATERPROOFING AT CONCRETE WALL
3" = 1'-0"



2 PLANter WATERPROOFING TERMINATION
3" = 1'-0"



4 PLANter WATERPROOFING AT GLAZED STOREFRONT
3" = 1'-0"

NOTE: SEE CIVIL DRWGS FOR ADDITIONAL DRAINAGE REQUIREMENTS.