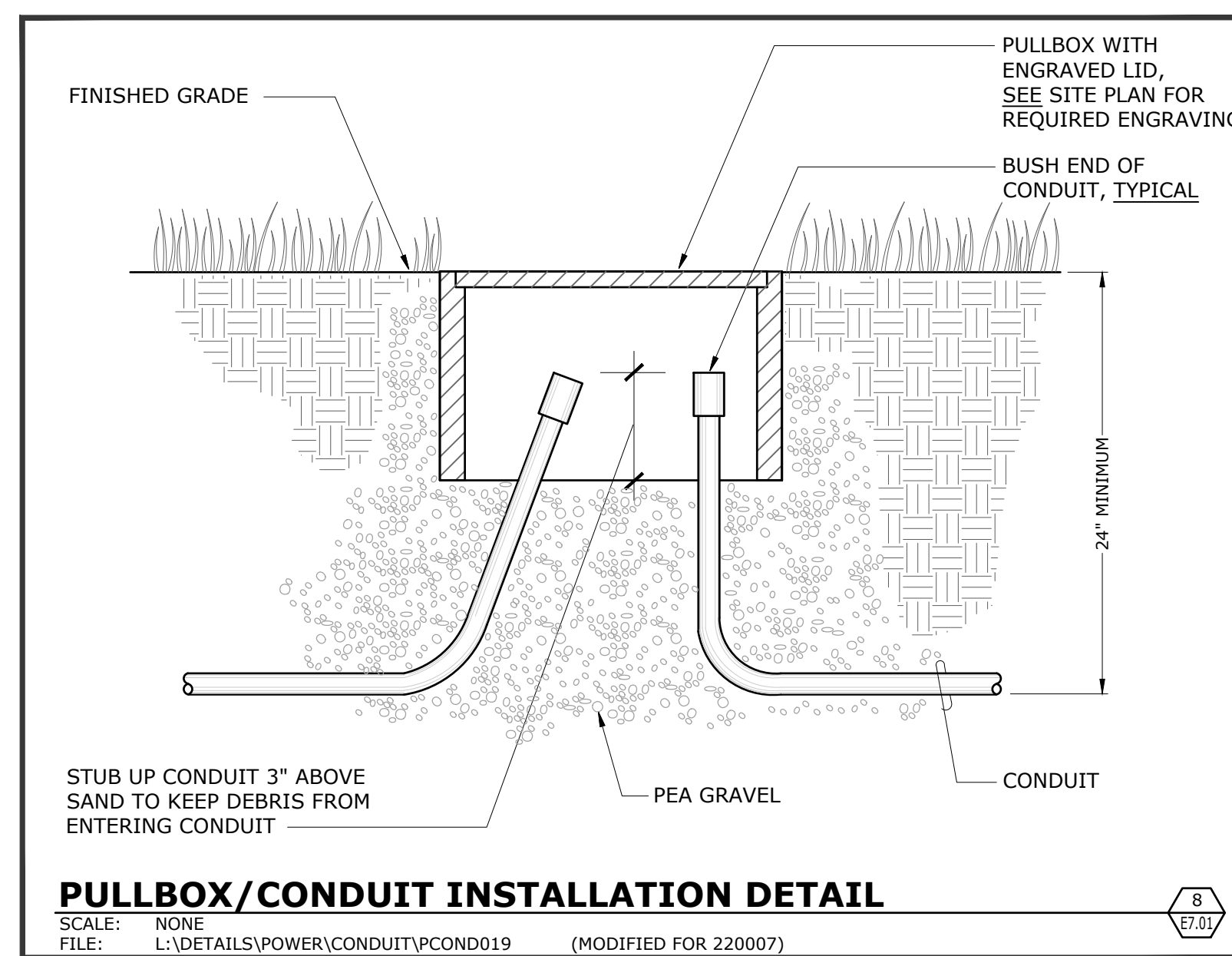
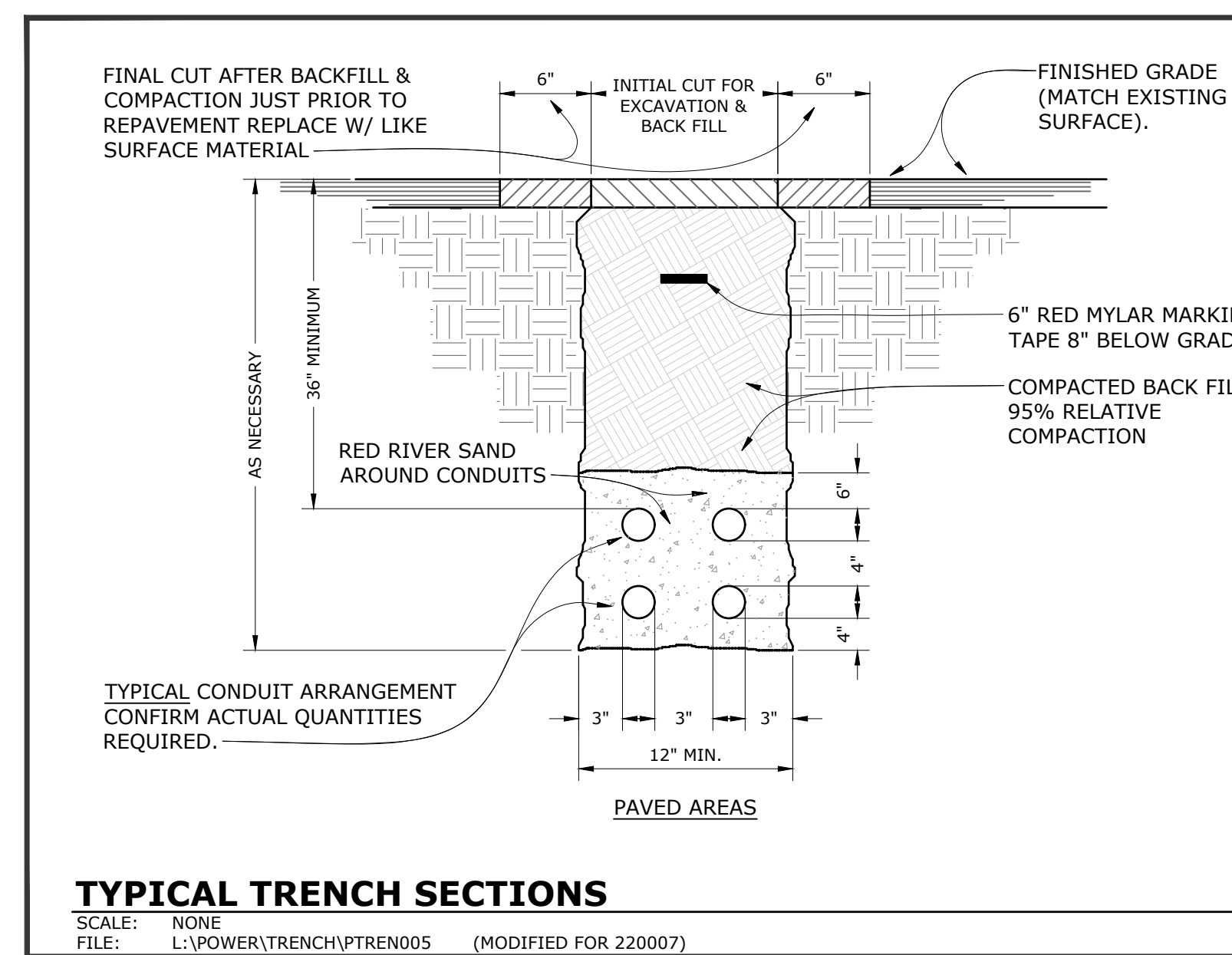


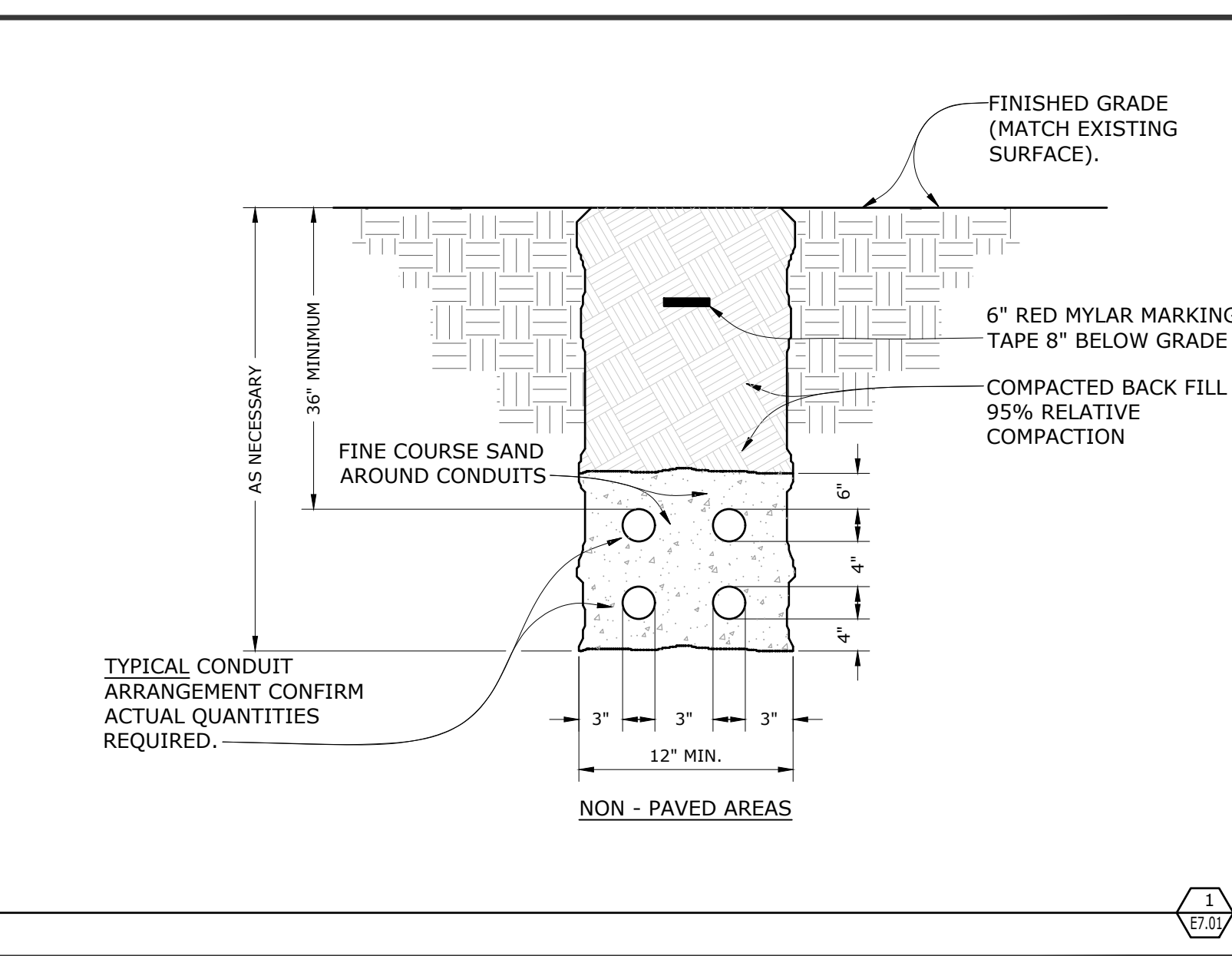
**SWITCHBOARD AND FLOOR/SLAB MOUNTED DISTRIBUTION PANEL MOUNTING/HOUSEKEEPING PAD**  
 SCALE: NONE  
 FILE: L:\DETAILS\POWER\PADS\PPAD001 (MODIFIED FOR 220007)



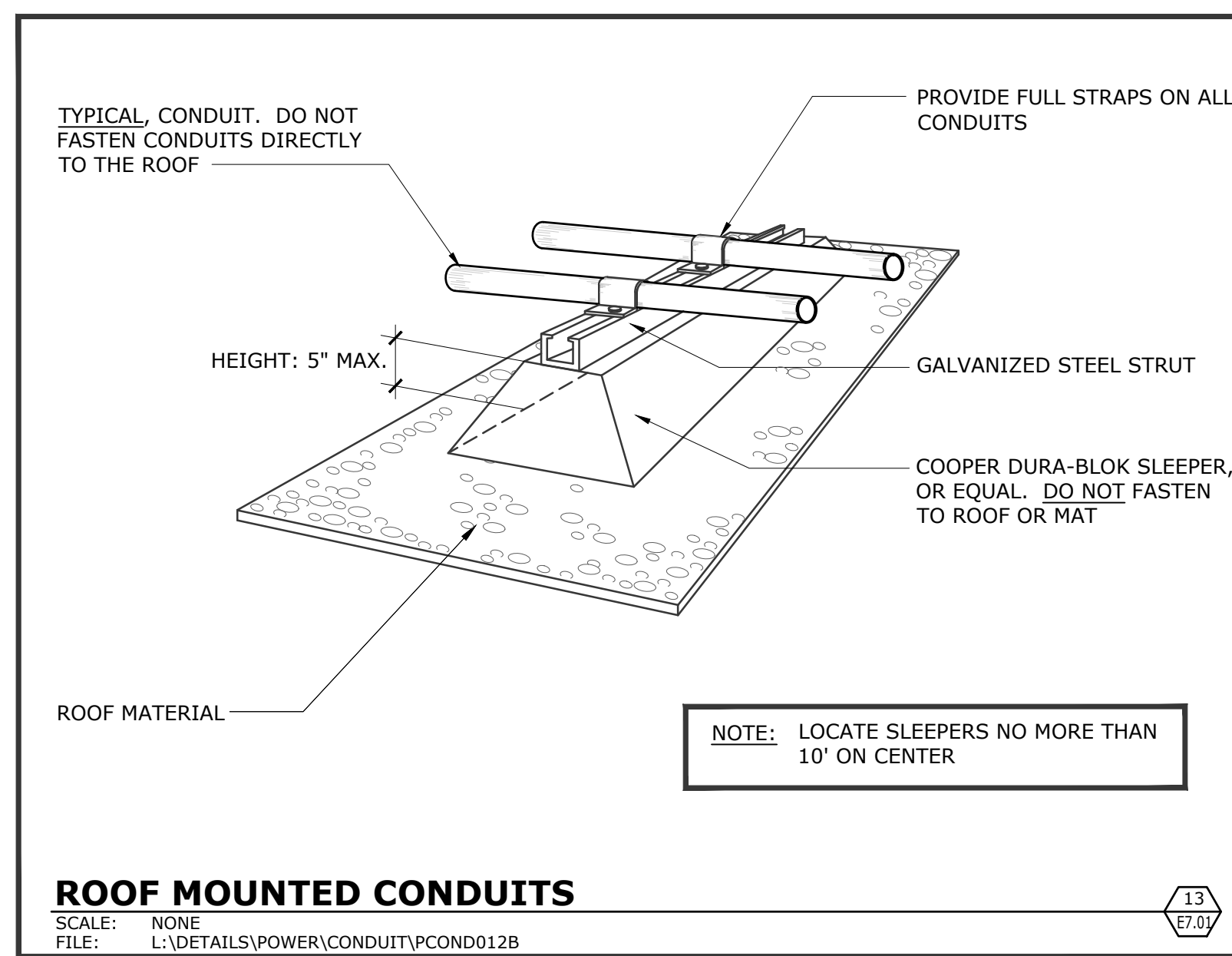
**PULLBOX/CONDUIT INSTALLATION DETAIL**  
 SCALE: NONE  
 FILE: L:\DETAILS\POWER\CONDUIT\PCON019 (MODIFIED FOR 220007)



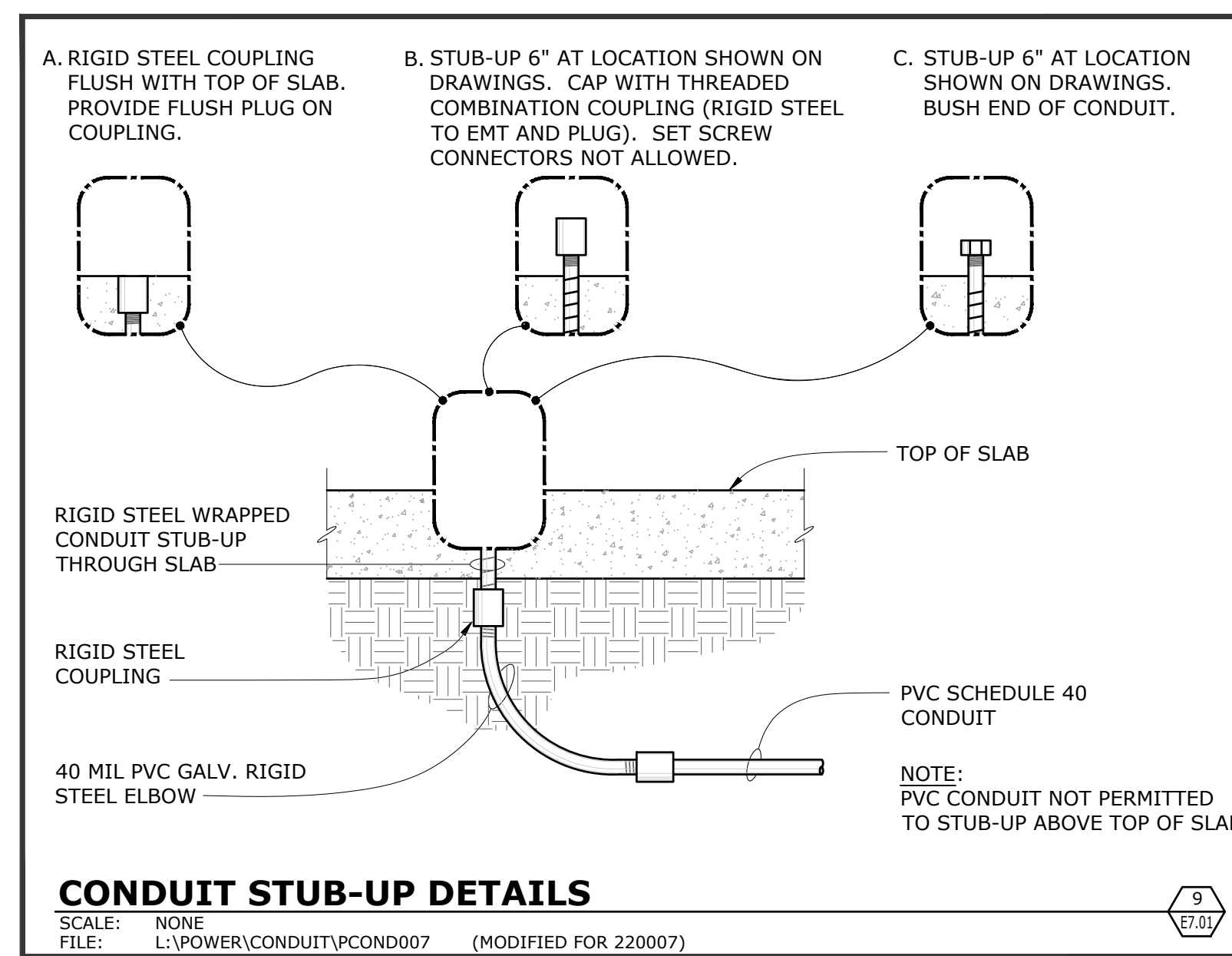
**TYPICAL TRENCH SECTIONS**  
 SCALE: NONE  
 FILE: L:\POWER\TRENCH\PTREN05 (MODIFIED FOR 220007)



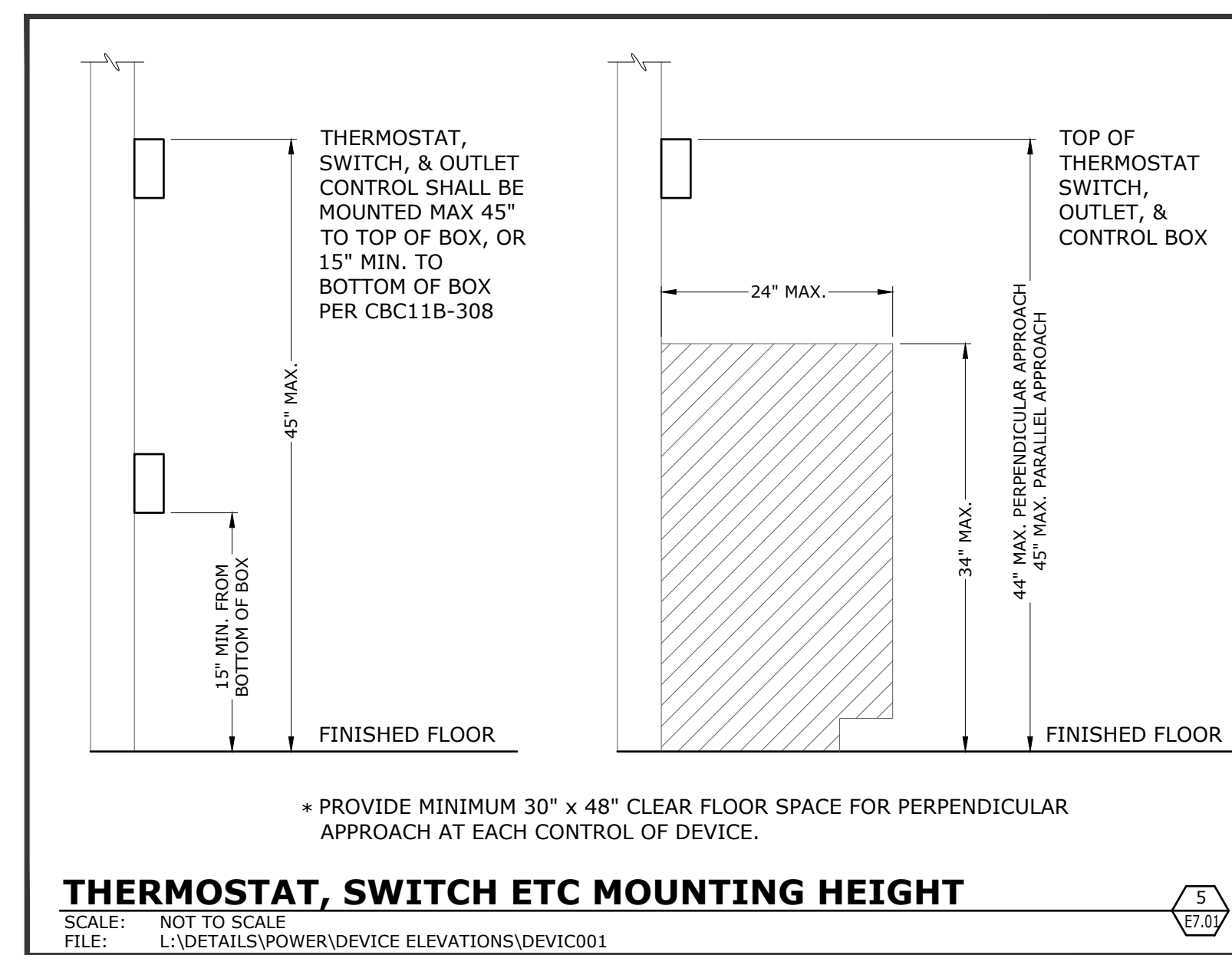
**TRANSFORMER MOUNTING DETAIL**  
 SCALE: NONE  
 FILE: L:\DETAILS\POWER\TRANSFORMER\PTRAN006 (MODIFIED FOR 220007)



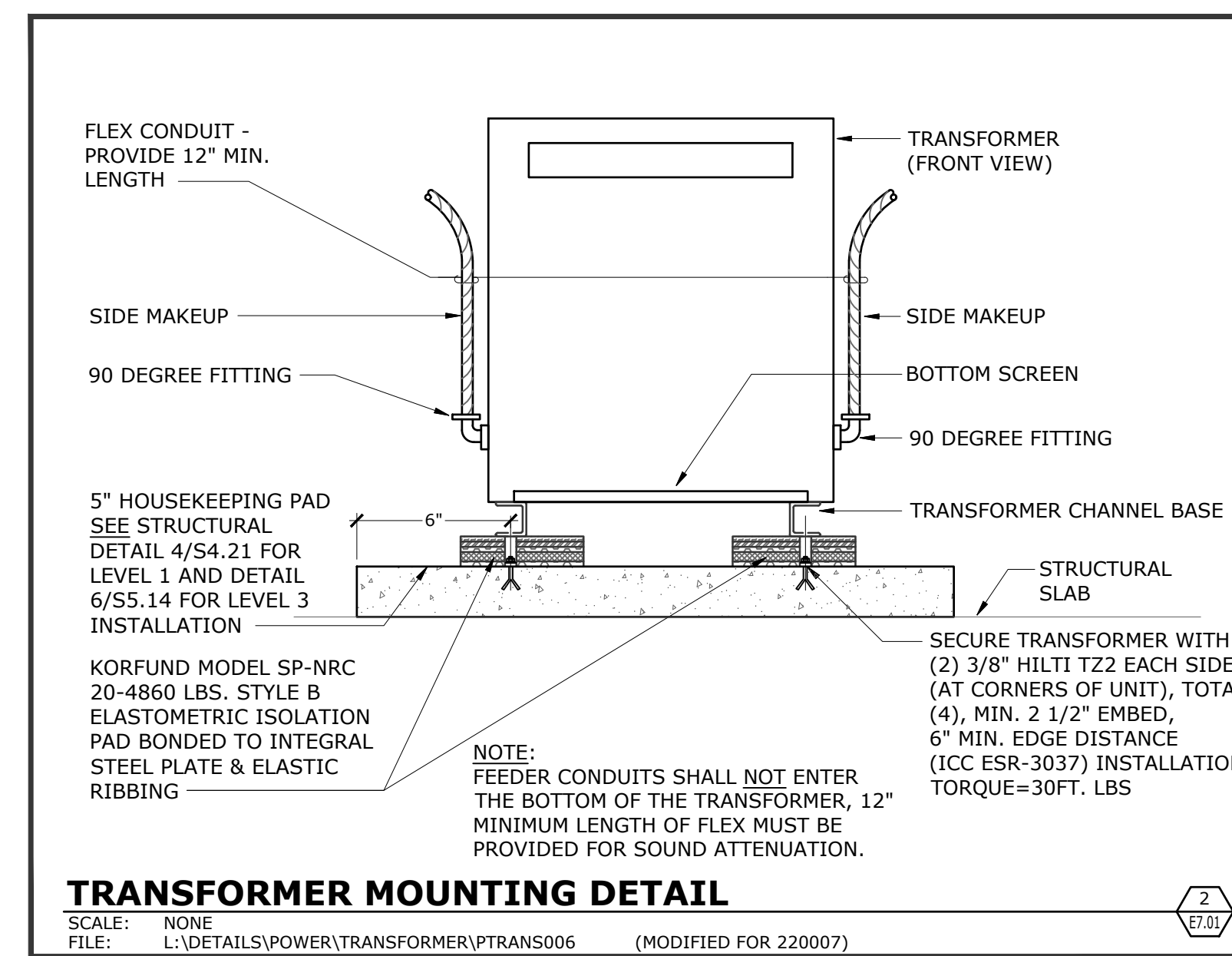
**ROOF MOUNTED CONDUITS**  
 SCALE: NONE  
 FILE: L:\DETAILS\POWER\CONDUIT\PCON0128 (MODIFIED FOR 220007)



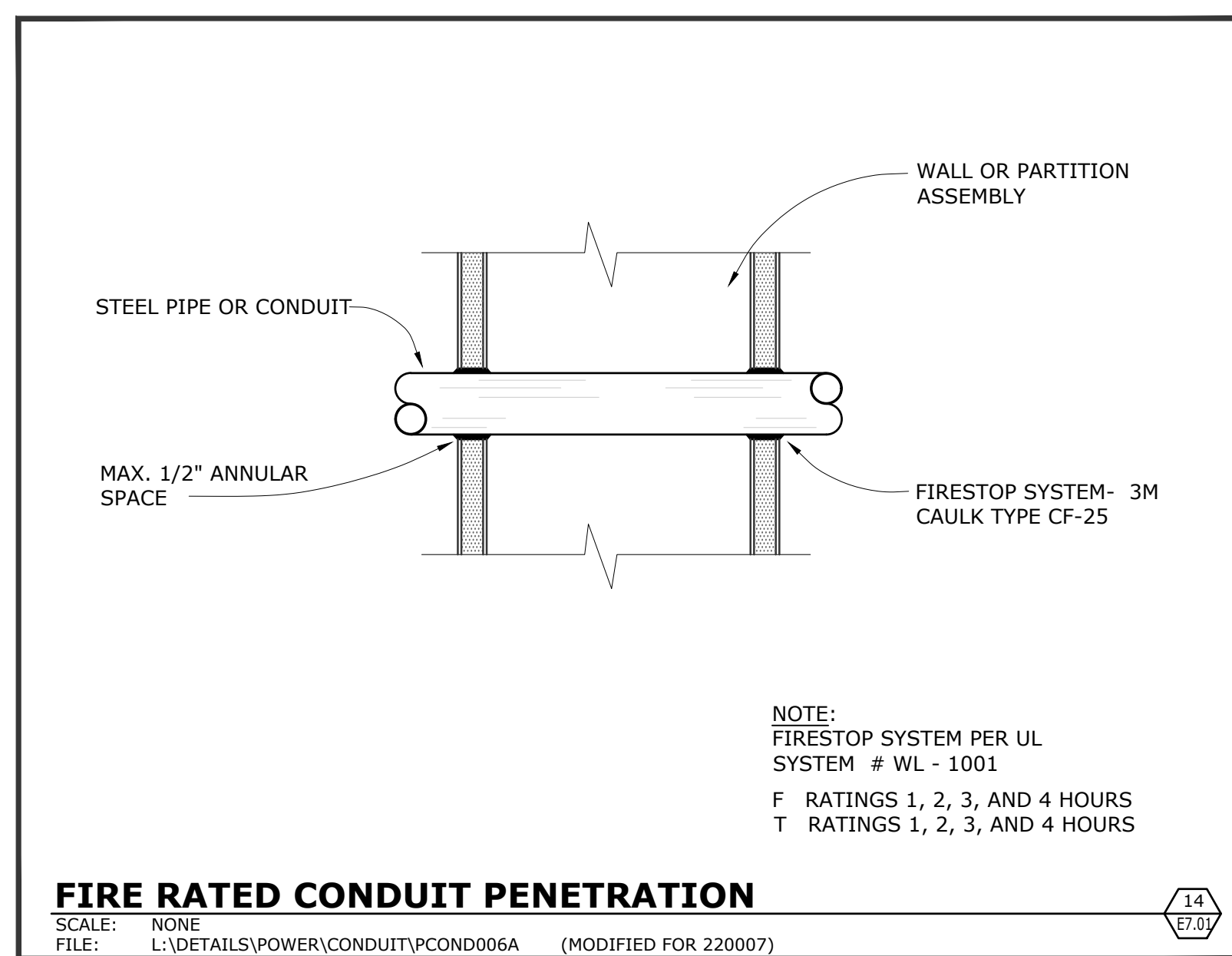
**CONDUIT STUB-UP DETAILS**  
 SCALE: NONE  
 FILE: L:\POWER\CONDUIT\PCON007 (MODIFIED FOR 220007)



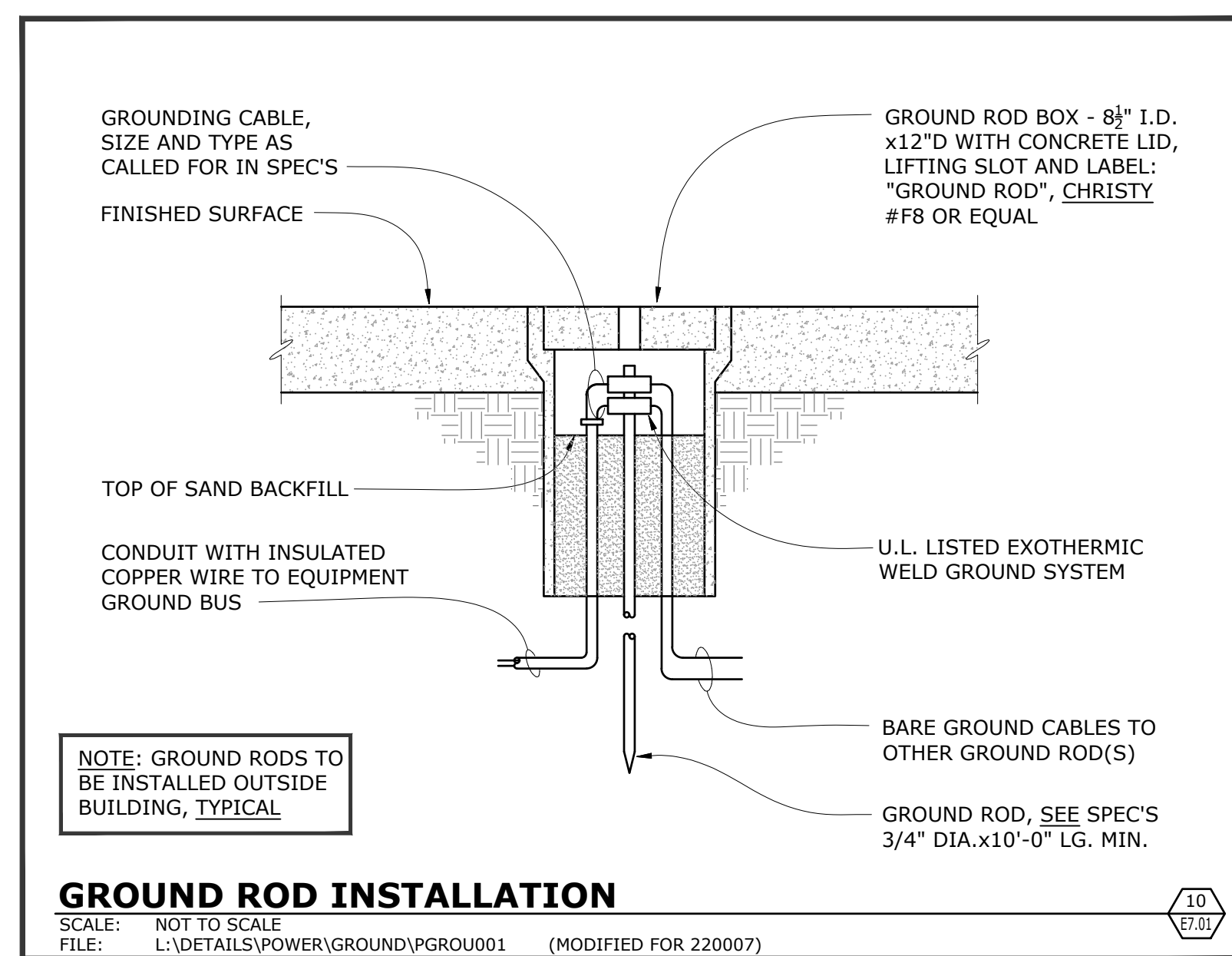
**THERMOSTAT, SWITCH ETC MOUNTING HEIGHT**  
 SCALE: NONE TO SCALE  
 FILE: L:\DETAILS\POWER\DEVICE ELEVATIONS\DEVIC001 (MODIFIED FOR 220007)



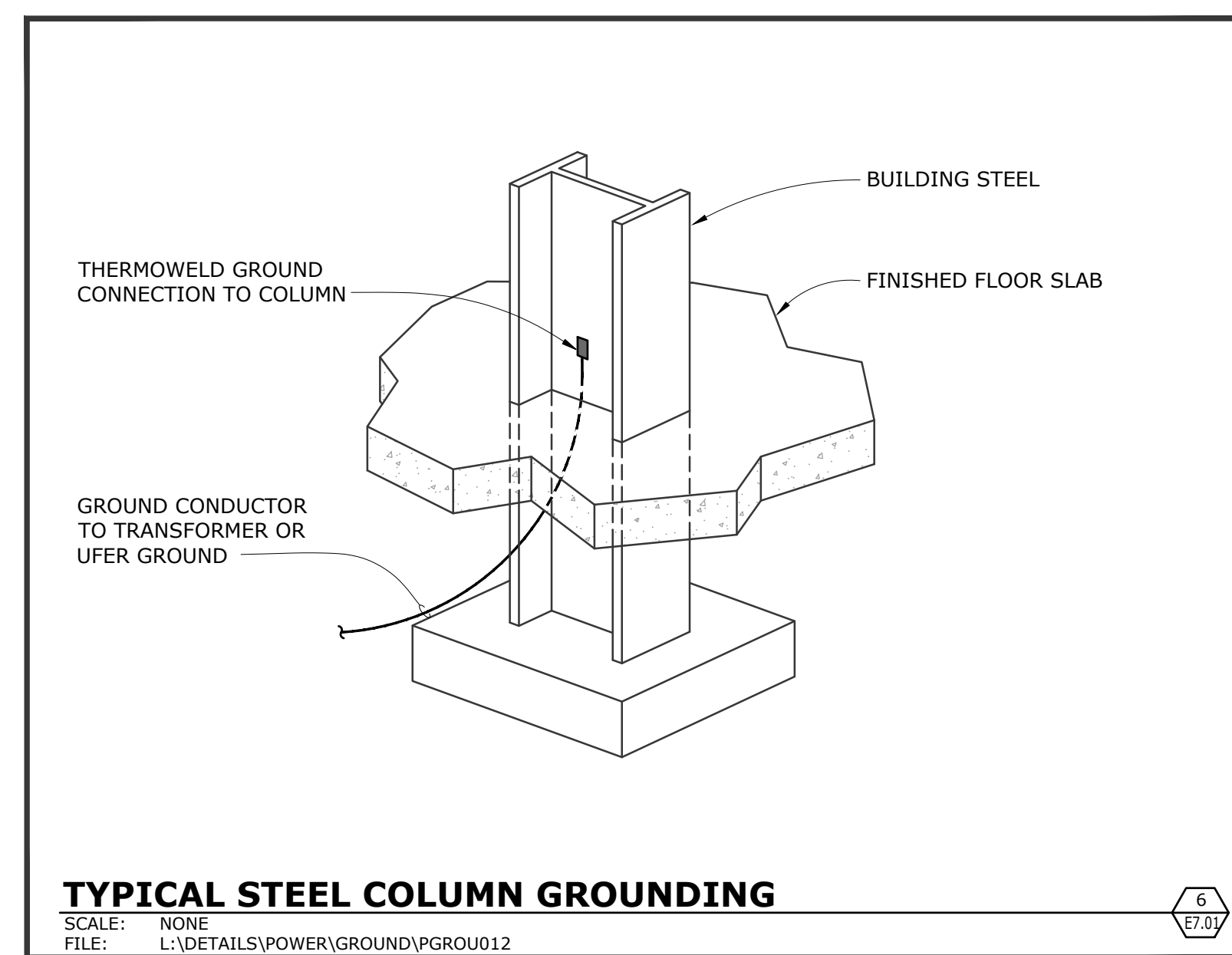
**TRANSFORMER MOUNTING DETAIL**  
 SCALE: NONE  
 FILE: L:\DETAILS\POWER\TRANSFORMER\PTRAN006 (MODIFIED FOR 220007)



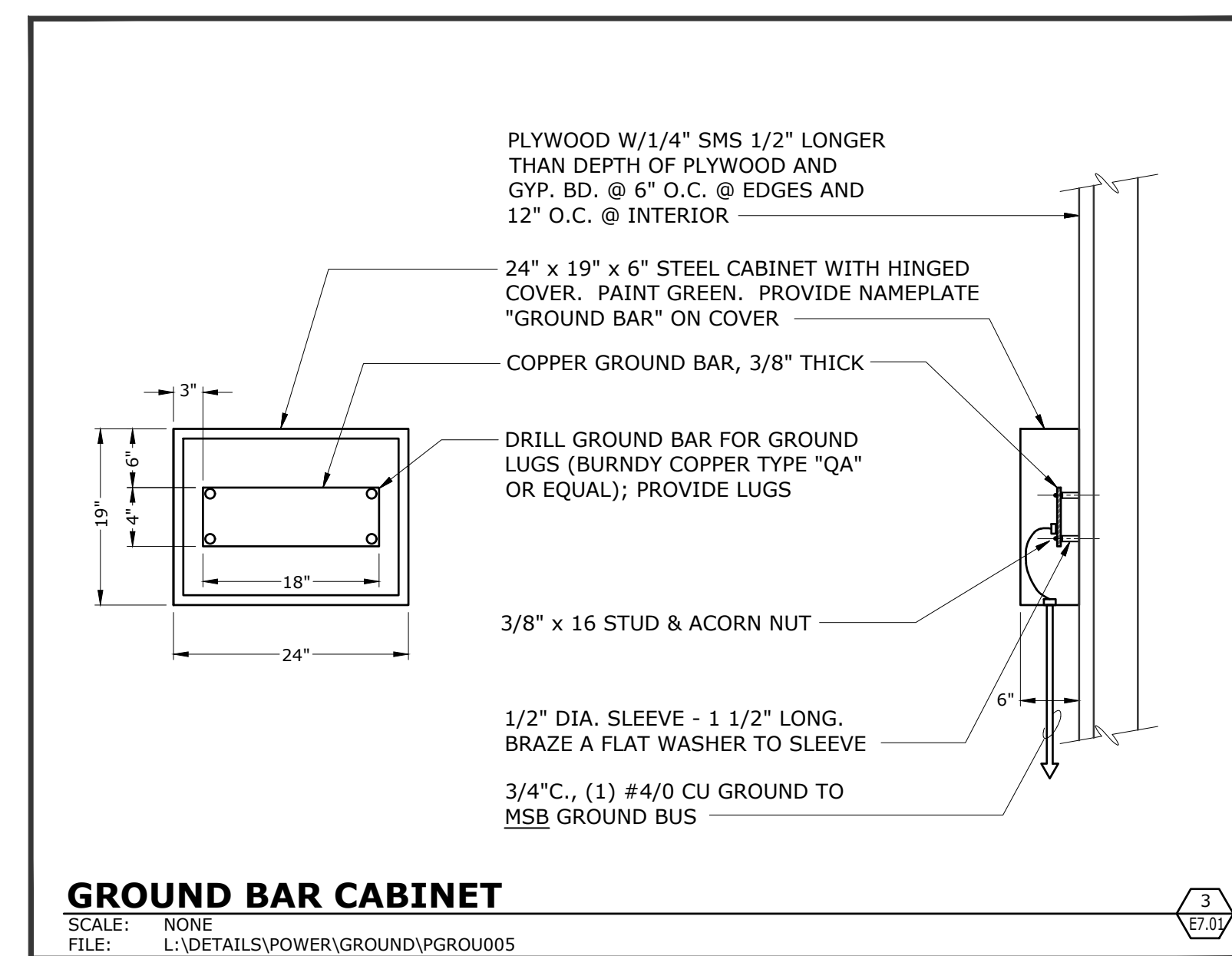
**FIRE RATED CONDUIT PENETRATION**  
 SCALE: NONE  
 FILE: L:\DETAILS\POWER\CONDUIT\PCON0066A (MODIFIED FOR 220007)



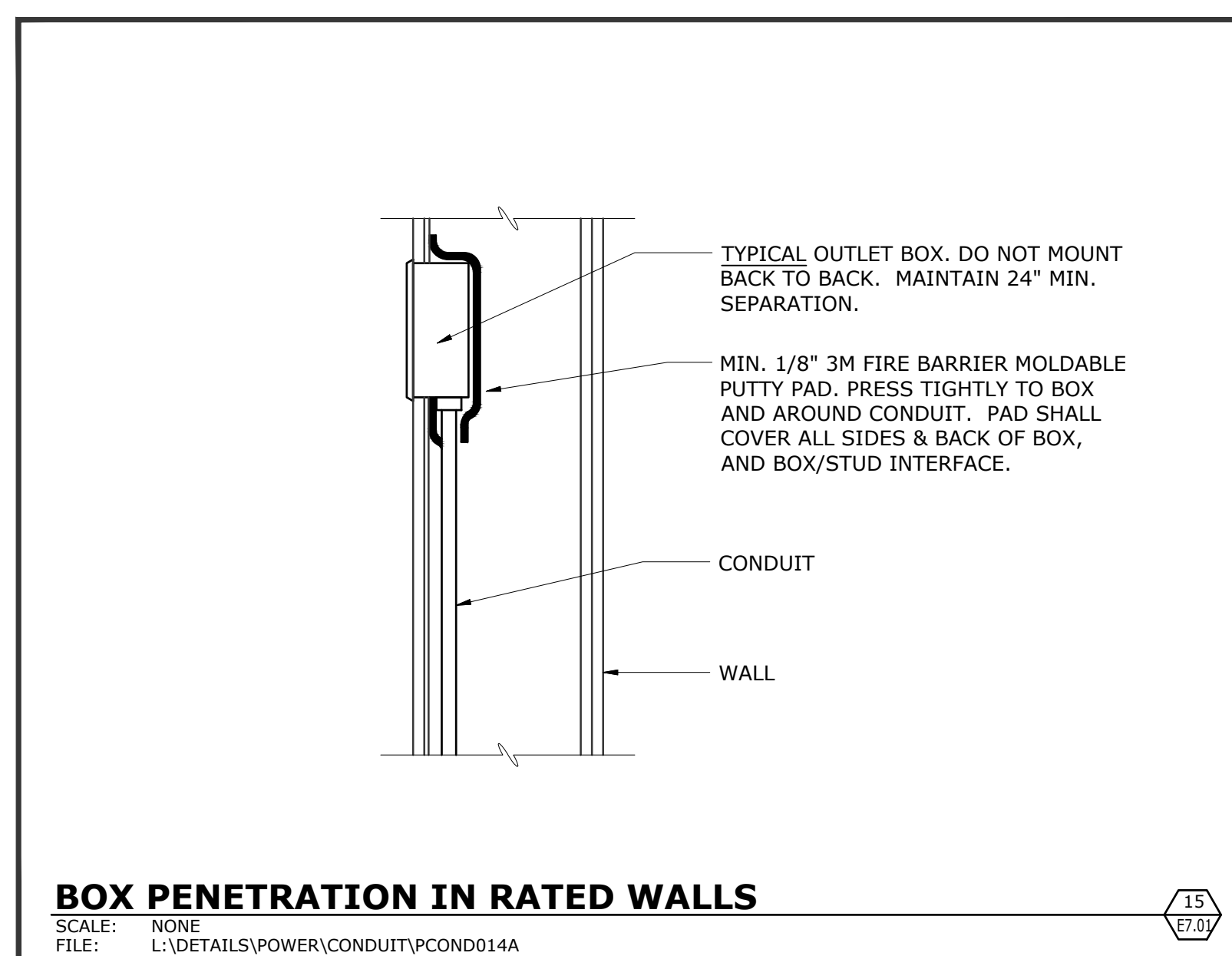
**GROUND ROD INSTALLATION**  
 SCALE: NONE TO SCALE  
 FILE: L:\DETAILS\POWER\GROUND\PGROU01 (MODIFIED FOR 220007)



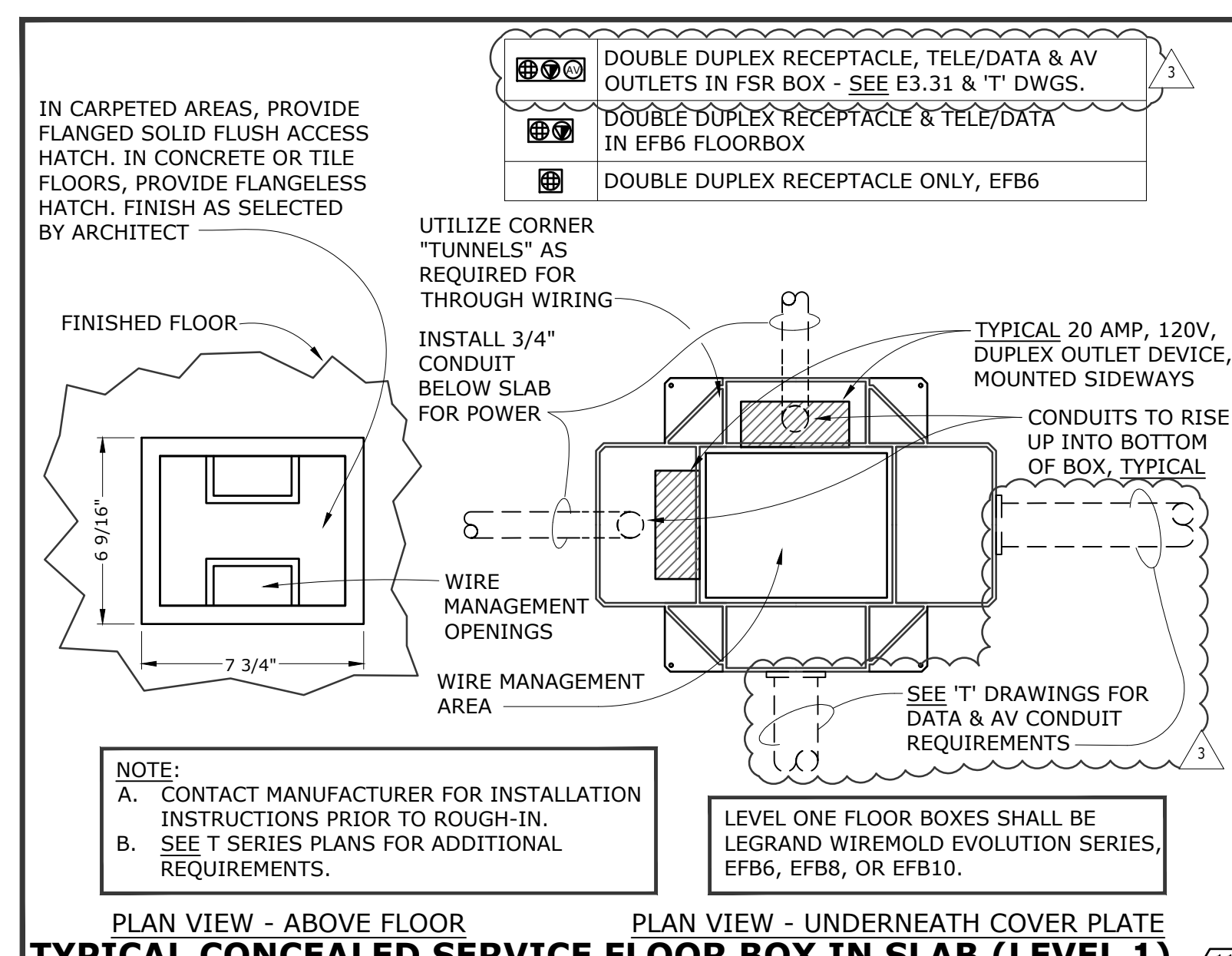
**TYPICAL STEEL COLUMN GROUNDING**  
 SCALE: NONE TO SCALE  
 FILE: L:\DETAILS\POWER\GROUND\PGROU12 (MODIFIED FOR 220007)



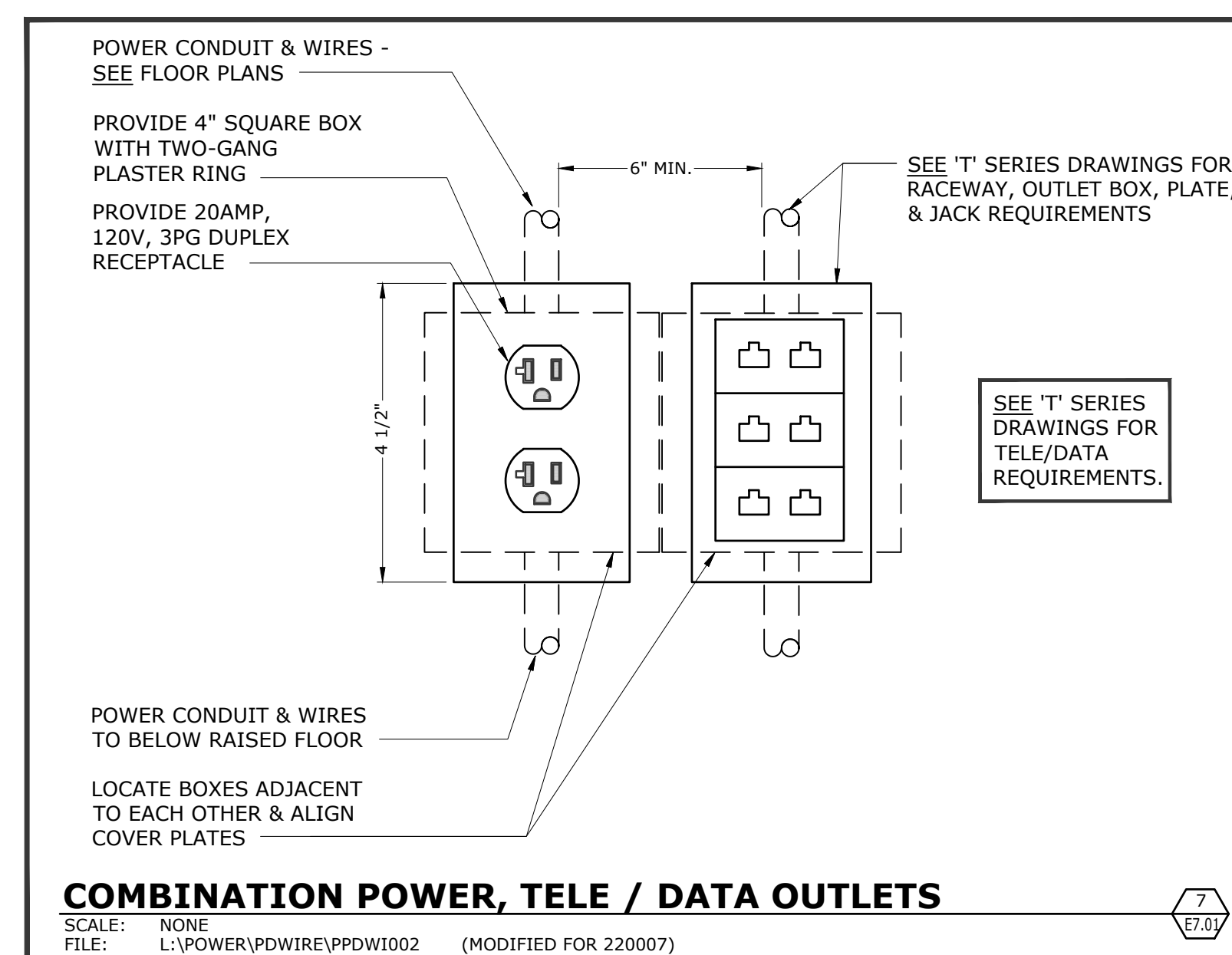
**GROUND BAR CABINET**  
 SCALE: NONE  
 FILE: L:\DETAILS\POWER\GROUND\PGROU05 (MODIFIED FOR 220007)



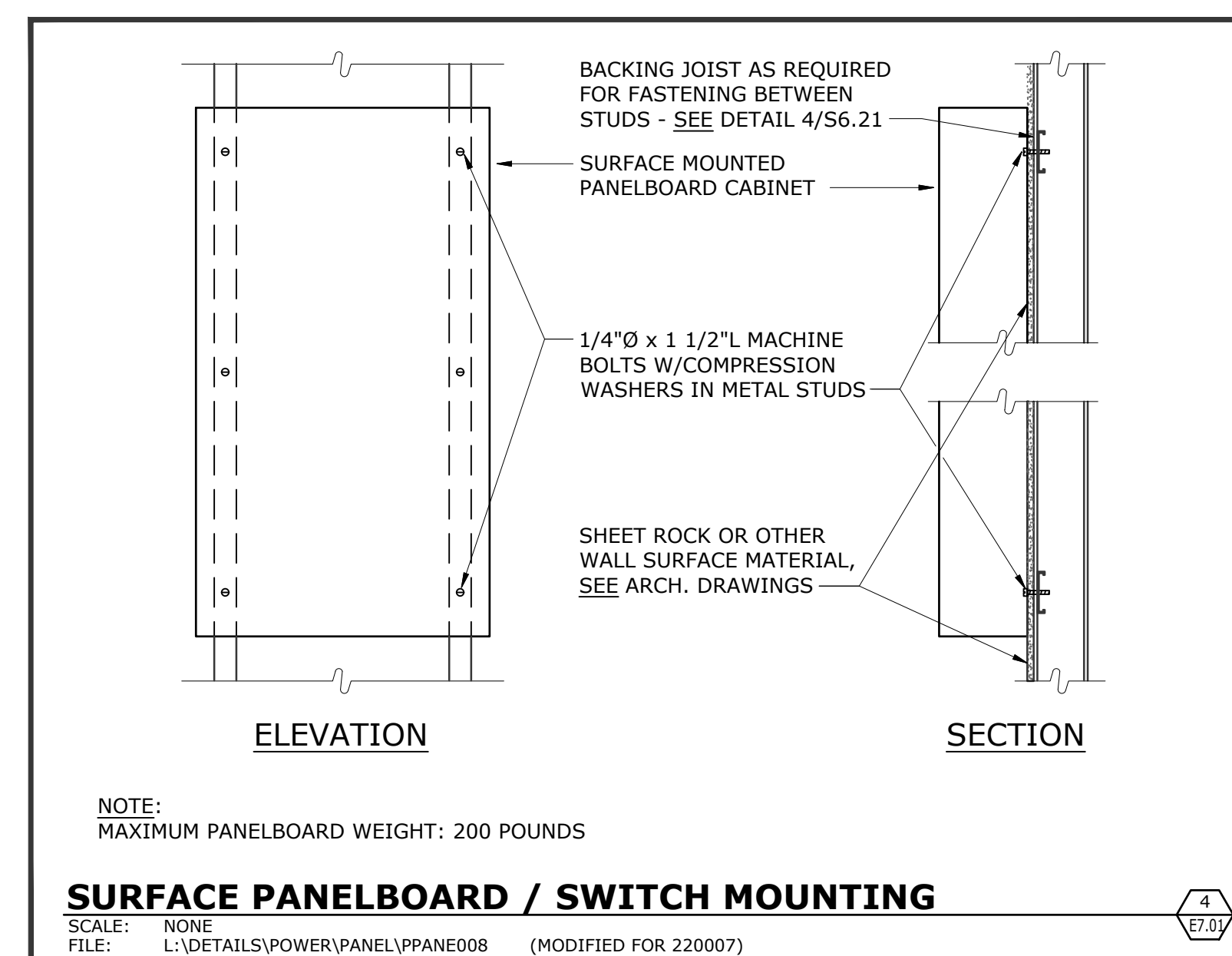
**BOX PENETRATION IN RATED WALLS**  
 SCALE: NONE  
 FILE: L:\DETAILS\POWER\CONDUIT\PCON0144 (MODIFIED FOR 220007)



**TYPICAL CONCEALED SERVICE FLOOR BOX IN SLAB (LEVEL 1)**  
 SCALE: NONE  
 FILE: L:\DETAILS\POWER\RECEPT\PRECE002E (MODIFIED FOR 220007)



**COMBINATION POWER, TELE / DATA OUTLETS**  
 SCALE: NONE  
 FILE: L:\POWER\POWER\RECEPT\PRECE002E (MODIFIED FOR 220007)



**SURFACE PANELBOARD / SWITCH MOUNTING**  
 SCALE: NONE  
 FILE: L:\DETAILS\POWER\PANEL\PPAN008 (MODIFIED FOR 220007)

**NOLL & TAM ARCHITECTS**  
 729 Heinz Avenue  
 Berkeley, CA 94710  
 tel 510.542.2200  
 fax 510.542.2201

**CAVAGNERO**  
 MARK CAVAGNERO ASSOCIATES ARCHITECTS  
 1648 Serrano Street, Suite 200  
 San Francisco, California 94111  
 www.cavagnero.com

SEAL  
 P. [Signature]  
 REGISTERED PROFESSIONAL ARCHITECT  
 NO. 14738  
 EXP. 12/31/2023

**OMAHONY & MYER**  
 REGISTERED PROFESSIONAL ELECTRICAL ENGINEERS  
 480 REDWOOD HWY, SUITE 245  
 SAN RAFAEL, CALIFORNIA 94903  
 (415) 492-0262 / FAX (415) 479-9662  
 www.omahonyandmyer.com

PROJECT TITLE  
**Peralta Community College District  
 Laney Library & Learning Resource Center  
 (Building 100 Replacement)**

900 Fallon Street, Oakland, CA 94607

ISSUE FOR BID

ISSUE DATE	3/31/23
WAT JOB NUMBER	21942
REVISIONS	
DATE	DESCRIPTION
05/16/2024	ADDENDUM NO. 03

DRAWN BY SHEET TITLE CHECKED BY

DETAILS

SHEET NUMBER

**E7.01**