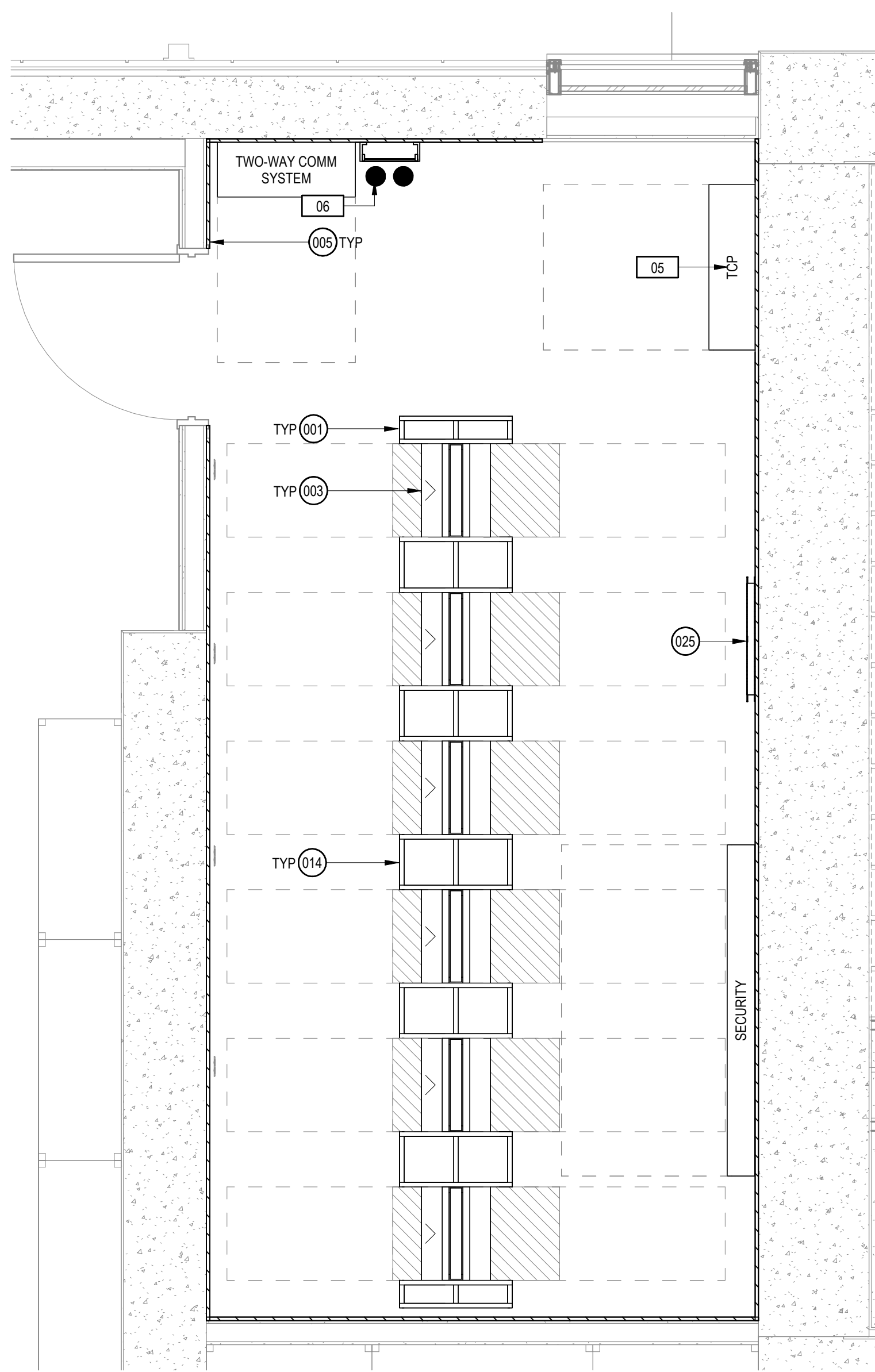
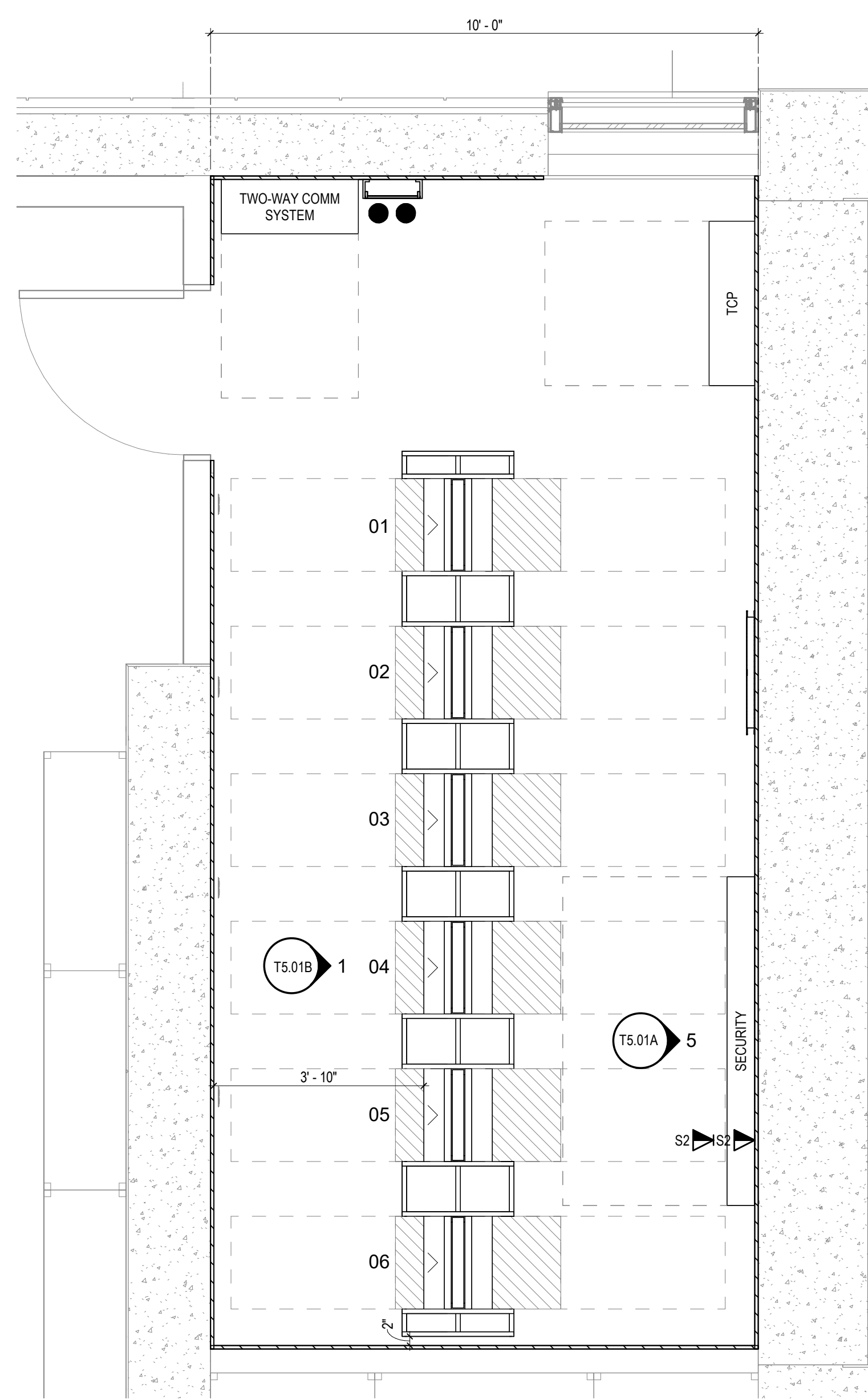


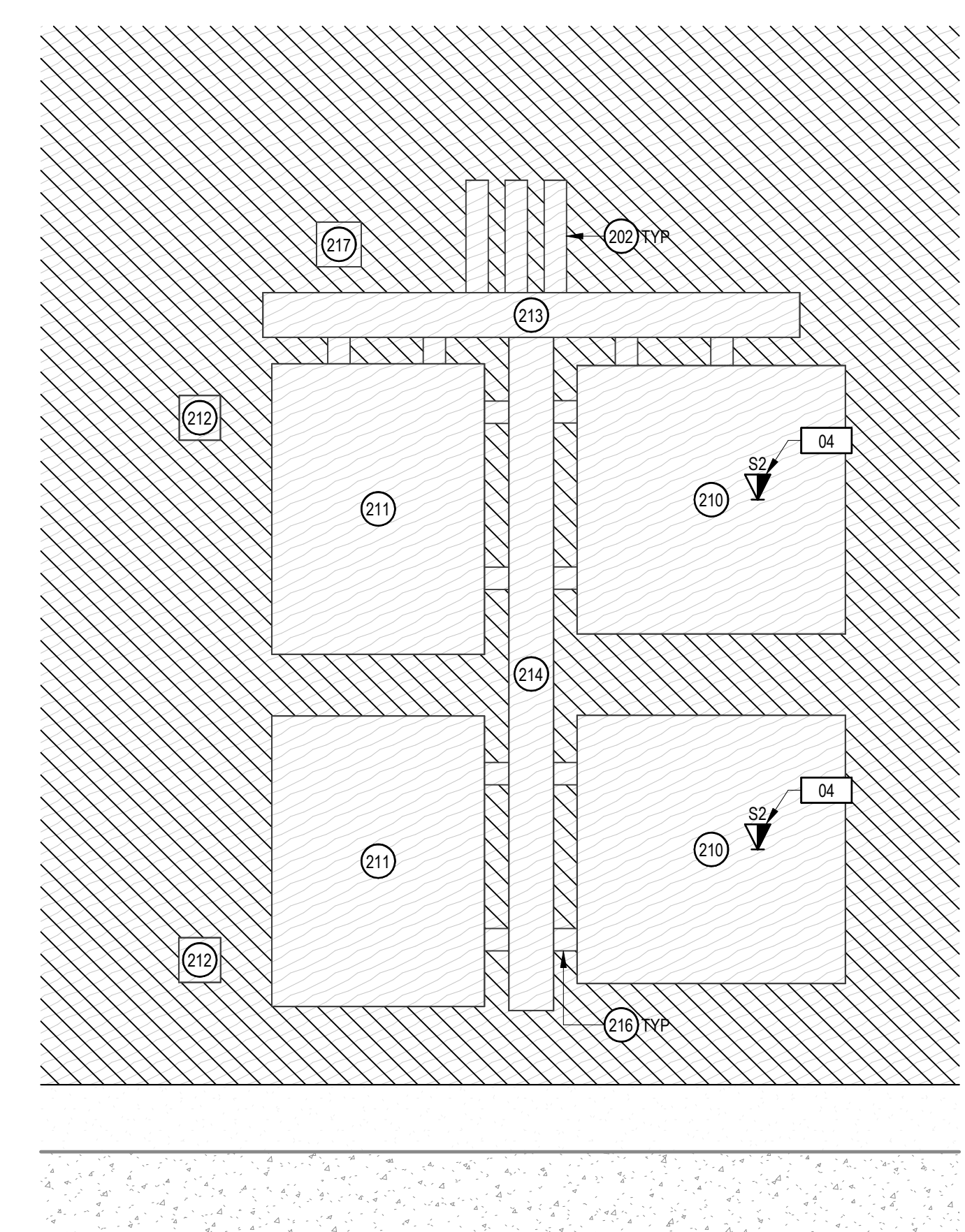
3 OVERHEAD PLAN - TIER 1
SCALE: 1/2" = 1'-0"



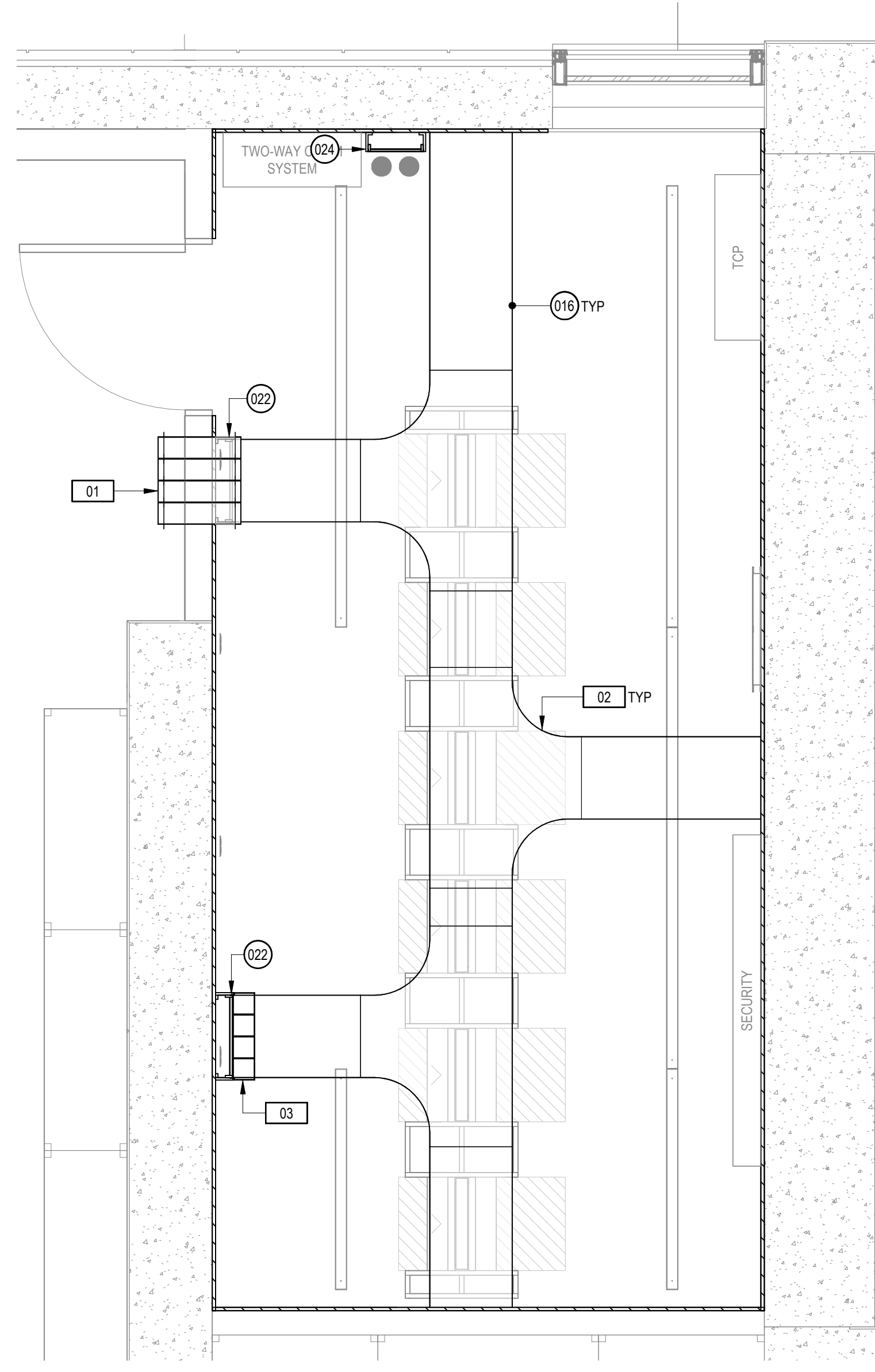
2 EQUIPMENT PLAN
SCALE: 1/2" = 1'-0"



1 REFERENCE PLAN
SCALE: 1/2" = 1'-0"



5 SECURITY PANEL ELEVATION
SCALE: 1" = 1'-0"



4 OVERHEAD PLAN - TIER 2
SCALE: 1/2" = 1'-0"

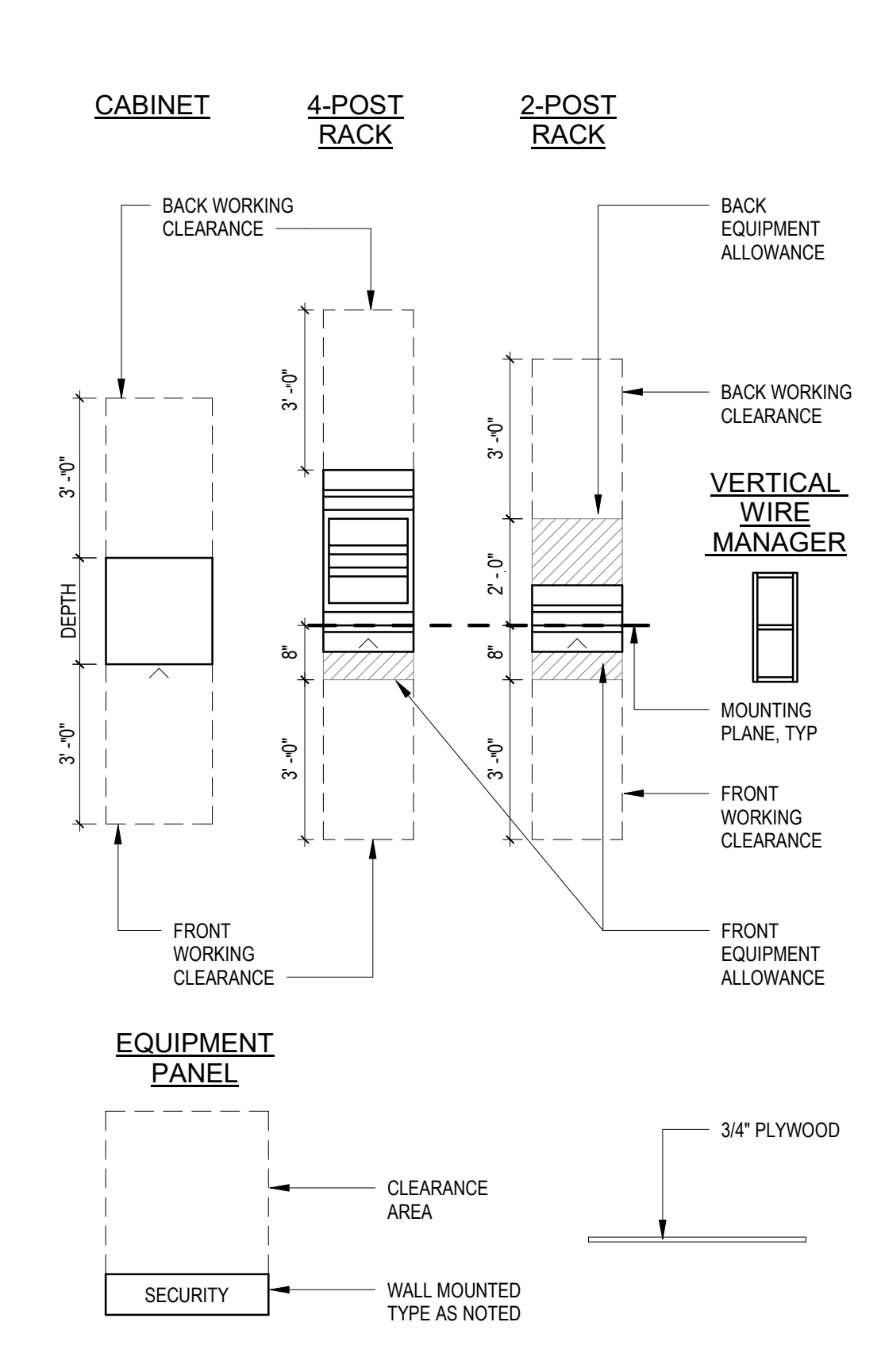
SHEET NOTES

1. PROVIDE BACKBOARDS ON WALLS OF ROOM AS SHOWN, STARTING AT 4" AFF TO 8'-0" AFF. MASK FIRE RATING STAMP PRIOR TO PAINTING. USE FLUSH FASTENERS FOR MOUNTING PLYWOOD.
2. PROVIDE RADIUS DROP OUTS WHERE CABLES TRANSITION DOWNWARD FROM OVERHEAD HORIZONTAL CABLE TRAY.
3. LABEL RACKS AND PATCH PANELS.
4. CABLE TRAY DEPTH REFERS TO TRAY'S LOADING DEPTH.
5. REFER TO ELECTRICAL DRAWINGS FOR ELECTRICAL CIRCUITS/OUTLETS AND LIGHTING REQUIREMENTS.
6. PROVIDE PLASTIC BUSHINGS ON EXPOSED ENDS OF CONDUIT AND SLEEVES, WHETHER VISIBLE OR NOT.
7. PATHWAYS SHOWN ARE DEDICATED FOR TELECOMMUNICATIONS CABLING ONLY, UON.
8. LABEL CONDUITS AT BOTH ENDS. LABEL MUST INDICATE CONDUITS DEDICATED USE FOR TELECOMMUNICATIONS AND AUDIOVISUAL CABLING AND LOCATION OF THE CONDUITS FAR END.
9. NEATLY BUNDLE (DRESS CABLE LONGITUDINALLY) AND SUPPORT (USING FASTENERS AND TIES DESCRIBED IN SPECS AND DRAWINGS) TELECOMMUNICATIONS CABLES ONTO OVERHEAD CABLE TRAY OR RUNWAY. NEATLY BUNDLE AND SUPPORT TELECOMMUNICATIONS CABLES ONTO VERTICALLY MOUNTED CABLES RUNWAY WHEN RISING FROM FLOOR SLEEVES OR DESCENDING FROM CEILING SLEEVES USING APPROVED TIES. NEATLY BUNDLE TELECOMMUNICATIONS CABLES INTO THE BACK OF THE VERTICAL CABLE MANAGEMENT SECTIONS USING APPROVED TIES. DRESS TELECOMMUNICATIONS CABLES FROM THE VERTICAL MANAGEMENT SECTIONS TO THE TERMINATION POSITION. MAXIMUM BUNDLE SIZE: 24 CABLES.
10. THE QUANTITY OF PATCH PANELS SHOWN ON THE ELEVATIONS IS FOR REFERENCE ONLY. IT IS THE RESPONSIBILITY OF THE TELECOM CONTRACTOR TO DETERMINE THE EXACT QUANTITY OF PATCH PANELS IN EACH OF.
11. TERMINATE ALL SECURITY STRUCTURED CABLING ON A DISCRETE PATCH PANEL IN THE SECURITY RACK.

NUMBERED NOTES

- 01 PROVIDE FIRESTOP UL SYSTEM # W-1336 AS INDICATED ON SHEET T5.02. 2M4 FIRESTOP SLEEVES STACKED ABOVE EACH OTHER. (B) TOTAL PATHWAY INTO USER SPACE. REFER TO PLANS FOR PATHWAY TYPE AND ROUTES. ALIGN WITH WIRE MESH CABLE TRAY IN USER SPACE.
- 02 FIELD FABRICATED TEE WITH PRE-MANUFACTURED RADIUS KIT. TRIM END OF RADIUS KIT IF NEEDED TO FIT AVAILABLE SPACE BETWEEN TEE AND FIRST CABLE DROP-OUT TO VCM. REFER TO 479.00 FOR DETAILS.
- 03 PATHWAY FROM DF-2.1. REFER TO THE PATHWAYS RISER DIAGRAM FOR TYPE AND QUANTITY.
- 04 PLACE DATA CONNECTIONS IN 3-PORT SURFACE MOUNT BOX. COORDINATE EXACT LOCATION WITH SECURITY CONTRACTOR PRIOR TO PROVISION.
- 05 FOR COORDINATION AND REFERENCE ONLY. REFER TO MECHANICAL PLANS FOR DETAILS.
- 06 (2) 4" CONDUITS FOR COORDINATION AND REFERENCE ONLY. REFER TO ELECTRICAL PLANS FOR DETAILS.

SYMBOL LEGEND



TECHNOLOGY EQUIPMENT LIST

ID	DESCRIPTION
001	7H x 6W VERTICAL CABLE MANAGER, DOUBLE-SIDED WITH DOORS INSTALLATION: END OF RACK BAY
003	19W x 7H UNIVERSAL EQUIPMENT RACK WITH SEISMIC GUSSET KIT INSTALLATION: DECK ANCHORED
005	3/4" FIRE-RETARDANT PLYWOOD INSTALLATION: 1'-0" AFF TO BOTTOM OF PLYWOOD
007	TIER-1 15W HORIZONTAL CABLE RUNWAY INSTALLATION: BETWEEN RACKS
014	7H x 12W VERTICAL CABLE MANAGER, DOUBLE-SIDED WITH DOORS INSTALLATION: BETWEEN RACKS
016	TIER-2 15W x 4D WIRE MESH CABLE TRAY INSTALLATION: 8'-0" AFF TO BOTTOM OF CABLE TRAY
021	BUSBAR INSTALLATION: 8" TO BOTTOM OF BUSBAR
022	19W VERTICAL CABLE RUNWAY WITH STANDOFFS INSTALLATION: ON WALL FROM TOP OF TIER-2 CABLE TRAY TO BOTTOM OF EZ-PATH FIRESTOP DEVICES
024	12W VERTICAL CABLE RUNWAY WITH STANDOFFS INSTALLATION: ON WALL FROM TOP OF 4" CONDUITS TO TOP OF TIER-2 CABLE TRAY
025	24" FIBER CABLE SLACK REELS INSTALLATION: ON WALL MOUNTED. REFER TO SHEET 879.00 FOR INSTALLATION DETAILS
202	2" CONDUIT TO CABLE TRAY
210	ACCESS CONTROL SYSTEM ENCLOSURE
211	POWER SUPPLY
212	DEDICATED HARDWARE CIRCUITS. REFER AND COORDINATE WITH ELECTRICAL.
213	1/4"x1/2" SCREW COVER GUTTER
214	1/4"x1/4" SCREW COVER GUTTER
216	2" CHASE NIPPLE
217	FIRE INTERFACE RELAY SECURITY

APPROVALS

NOLL & TAM
ARCHITECTS
729 Heinz Avenue
Berkeley, CA 94710
tel 510.542.2200
fax 510.542.2201

CAVAGNERO
MARK CAVAGNERO ASSOCIATES ARCHITECTS
1645 Redwood Street, Suite 200
San Francisco, California 94111
www.cavagnero.com

SEAL

TEECOM
1323 Broadway
Oakland, CA
94612
www.teecom.com

PROJECT TITLE

**Peralta Community College District
Laney Library & Learning Resource Center (Building 100 Replacement)**

900 Fallon Street, Oakland, CA 94607

ISSUE FOR BID

ISSUE DATE: 03/31/2023
NAT. JOB NUMBER: 21942
REVISIONS:
1 04/18/2024 Addendum No. 01

DRAWN BY: JA CHECKED BY: DM
SHEET TITLE
ENLARGED ROOM PLAN - EF/BDF-1.1

SHEET NUMBER
T5.01A