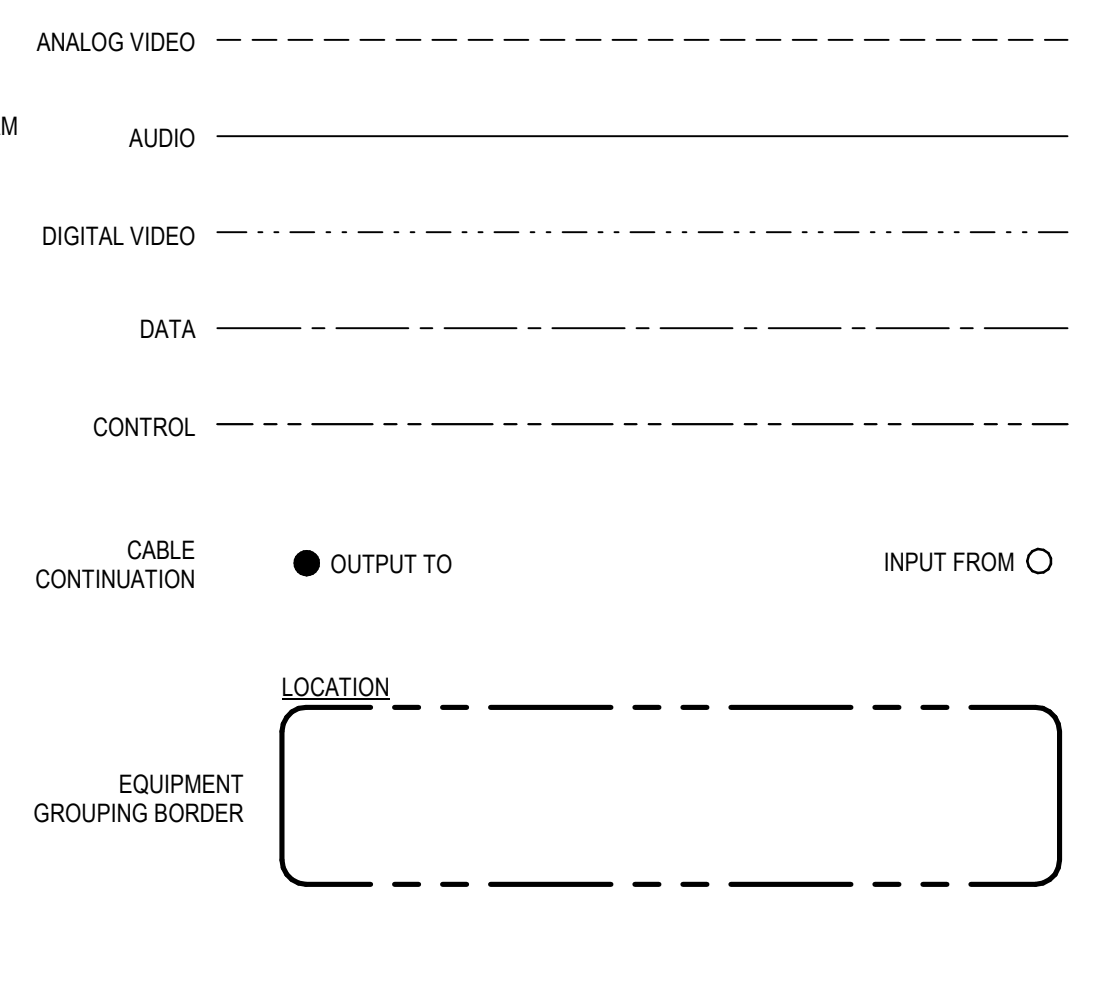


SHEET NOTES

1. REFER TO ARCHITECTURAL PLANS FOR EXACT LOCATIONS OF OUTLETS, DEVICES, AND EQUIPMENT. ALSO REFER TO ELECTRICAL PLANS TO COORDINATE FINAL LOCATIONS OF OUTLETS, DEVICES, AND EQUIPMENT.
2. REFER TO OVERALL PLANS FOR TELECOM DEVICES SERVING LOCATIONS.
3. REFER TO SHEET T5.102 FOR PATHWAY REQUIREMENTS.
4. ALIGN CENTER OF DISPLAY TO CENTERLINE OF FURNITURE. REFER TO ARCHITECTURAL DRAWINGS FOR THE FURNITURE LOCATION.
5. REFER TO OVERALL PLANS FOR PROJECTION SCREEN LOCATIONS. CENTER PROJECTOR TO PROJECTOR SCREEN LATERALLY.
6. SEE INSTALLATION DETAIL IN THIS SET.

FUNCTIONAL LEGEND



AV EQUIPMENT LIST

ID	DESCRIPTION
104	ASSISTIVE LISTENING PLATE
105	CONTROL PANEL
106	ROOM SCHEDULER
113	INTERFACE PLATE
125	CEILING MOUNTED PROJECTION SCREEN

NOLL & TAM
ARCHITECTS

729 Heinz Avenue
Berkeley, CA 94710
tel 510.542.2200
fax 510.542.2201

CAVAGNERO
MARK CAVAGNERO ASSOCIATES ARCHITECTS
1845 KATEMERE STREET, SUITE 200
SAN FRANCISCO, CALIFORNIA 94111
www.cavagnero.com

SEAL

TEECOM

1322 Broadway
Oakland, CA
94612
970.92.2890
www.teecom.com

PROJECT TITLE

**Peralta Community College District
Laney Library & Learning Resource Center
(Building 100 Replacement)**

900 Fallon Street, Oakland, CA 94607

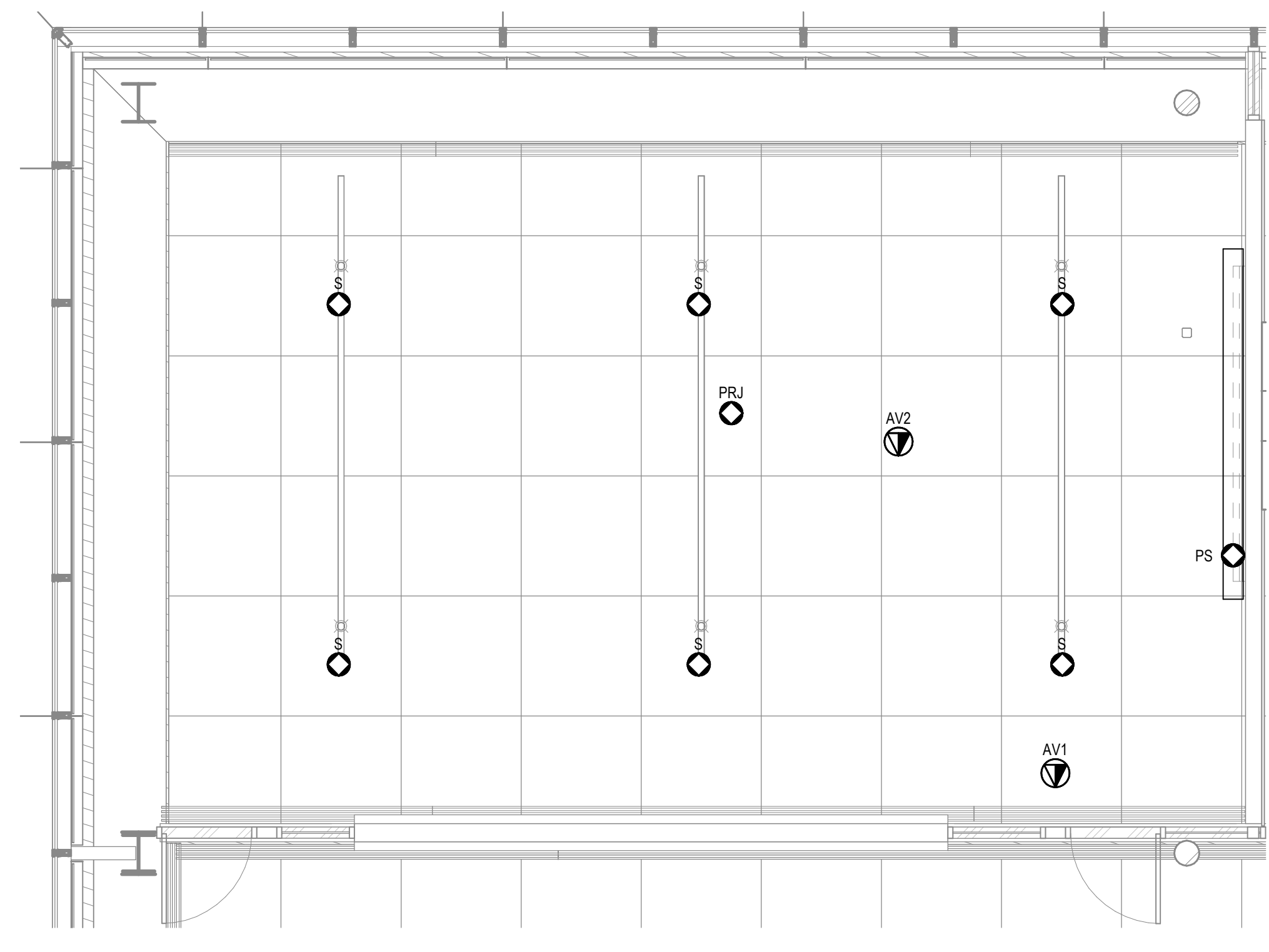
ISSUE FOR BID

ISSUE DATE	03/31/2023
NAT. JOB NUMBER	21942
REVISIONS	
DATE	DESCRIPTION
3 05/16/2024	Addendum No. 03

SHEET TITLE
ENLARGED ROOM PLAN - CLASSROOM - TYPE 4

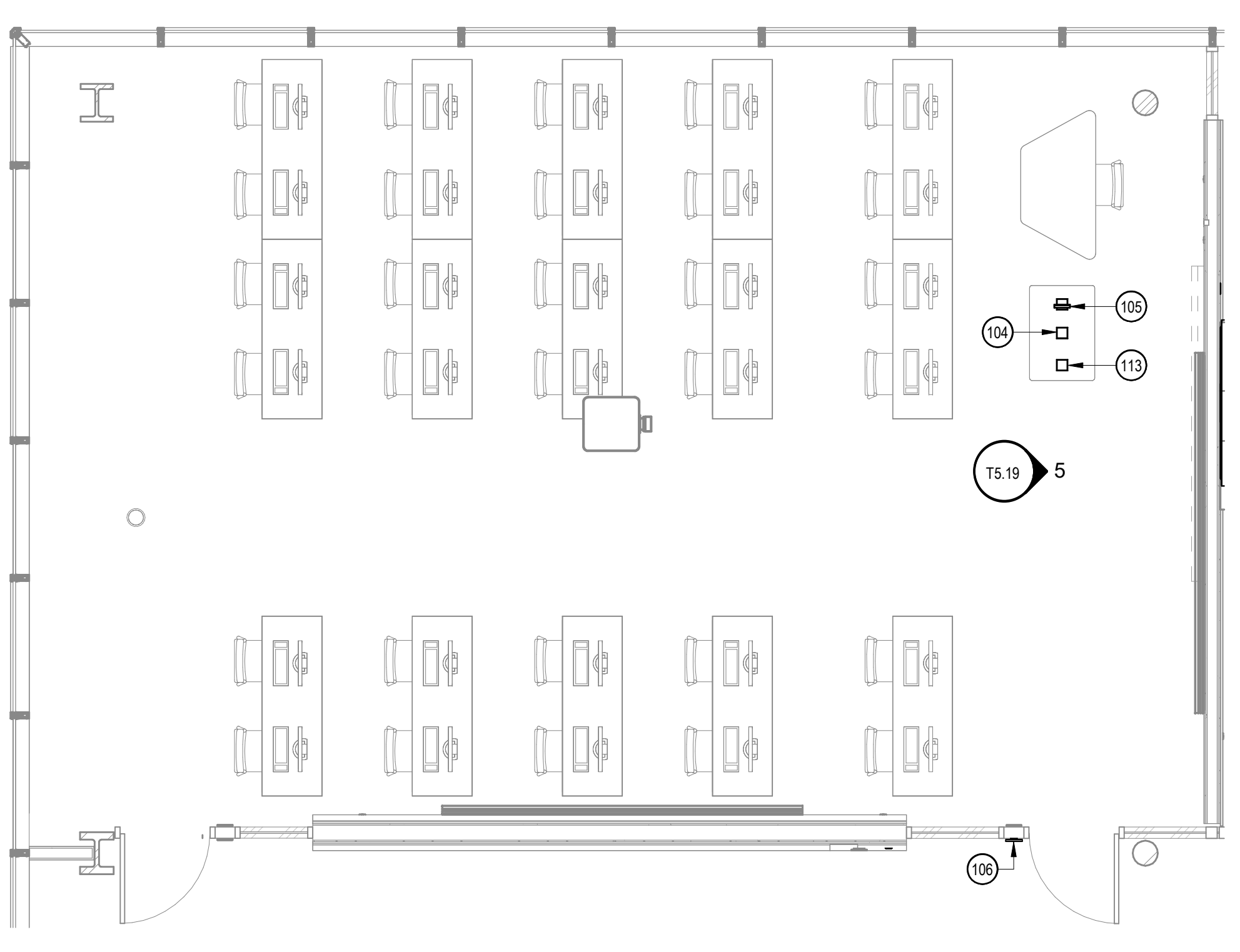
SHEET NUMBER

T5.19



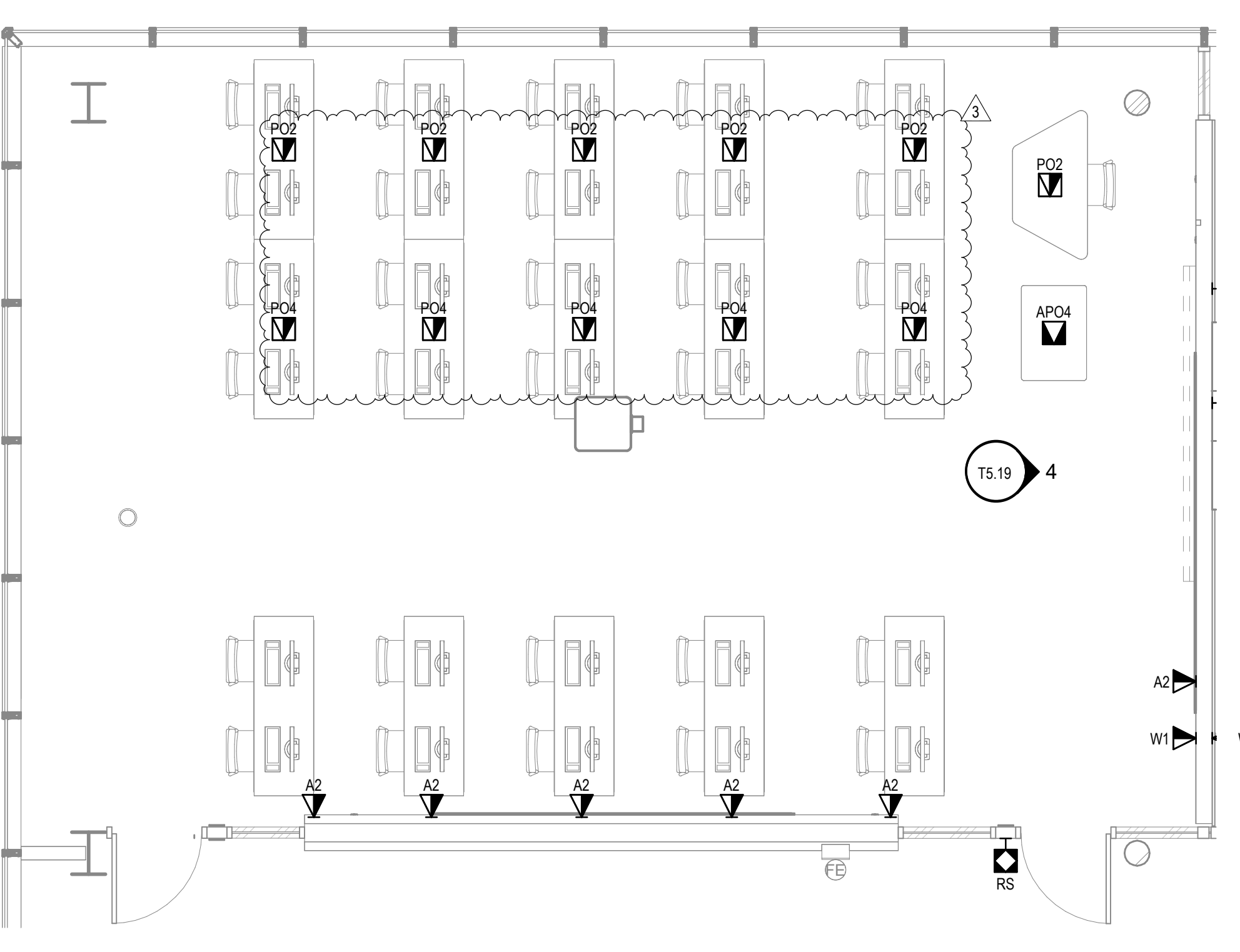
3 REFLECTED CEILING PLAN

SCALE: 1/8" = 1'-0"



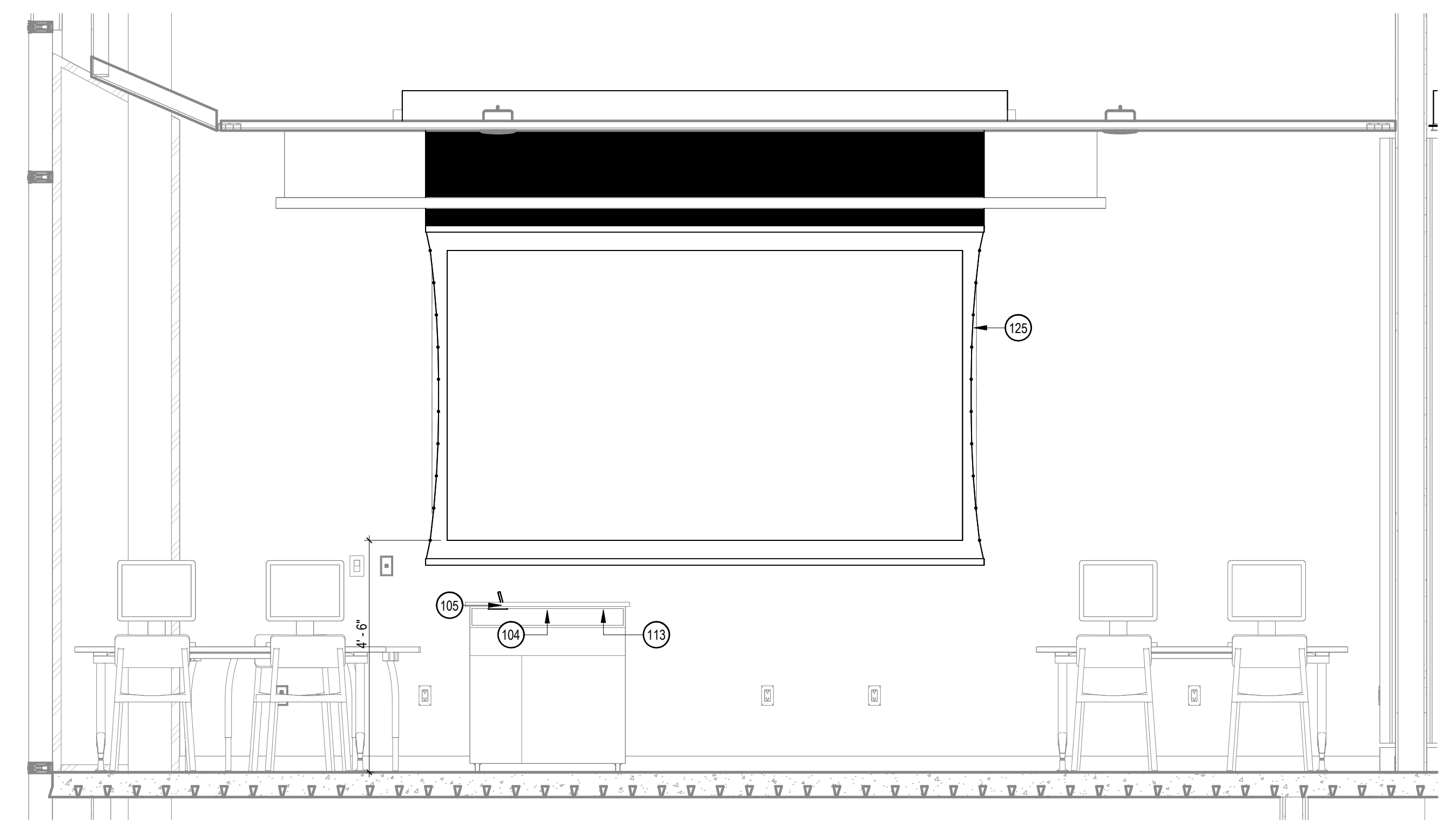
2 EQUIPMENT PLAN

SCALE: 1/8" = 1'-0"



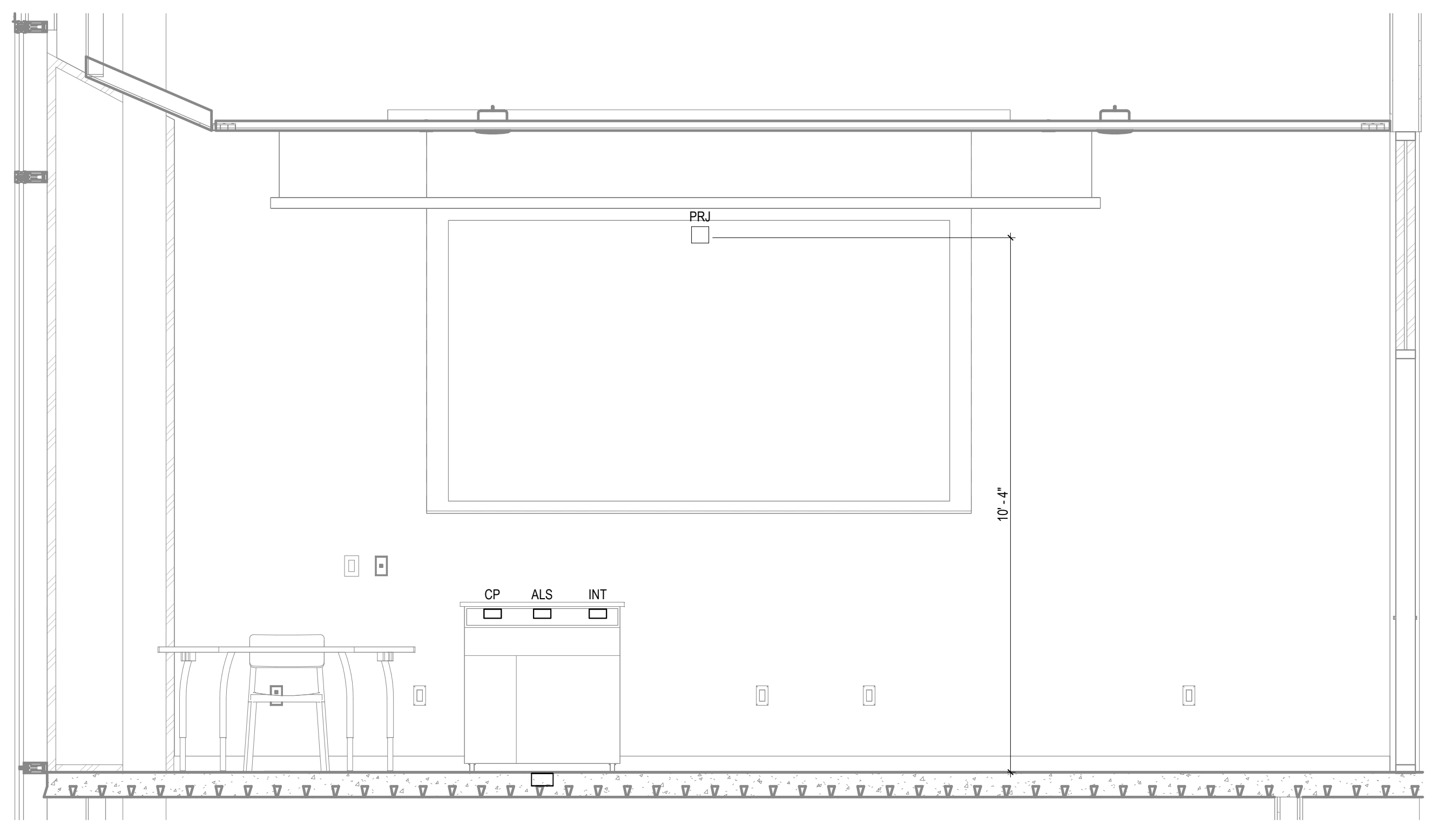
1 INFRASTRUCTURE PLAN

SCALE: 1/8" = 1'-0"



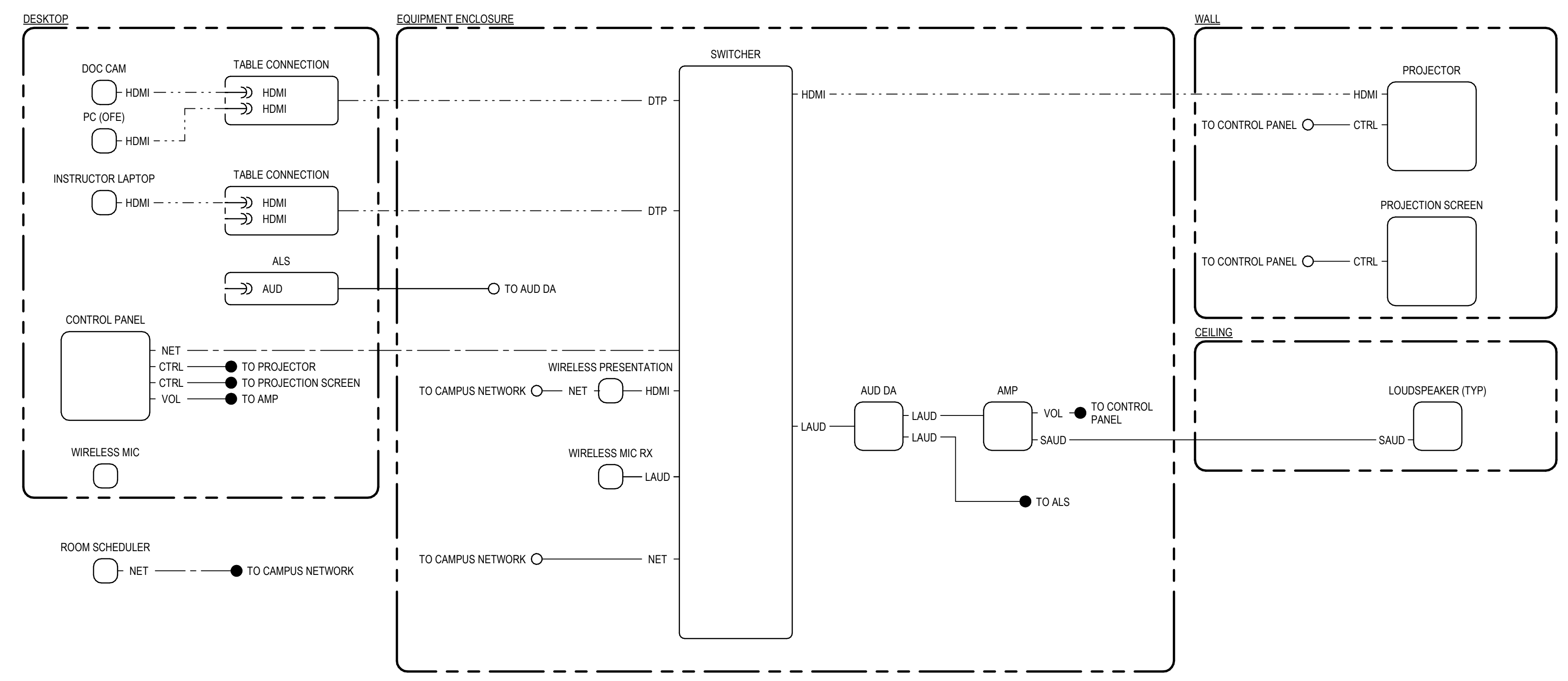
5 EQUIPMENT ELEVATION

SCALE: 1/2" = 1'-0"



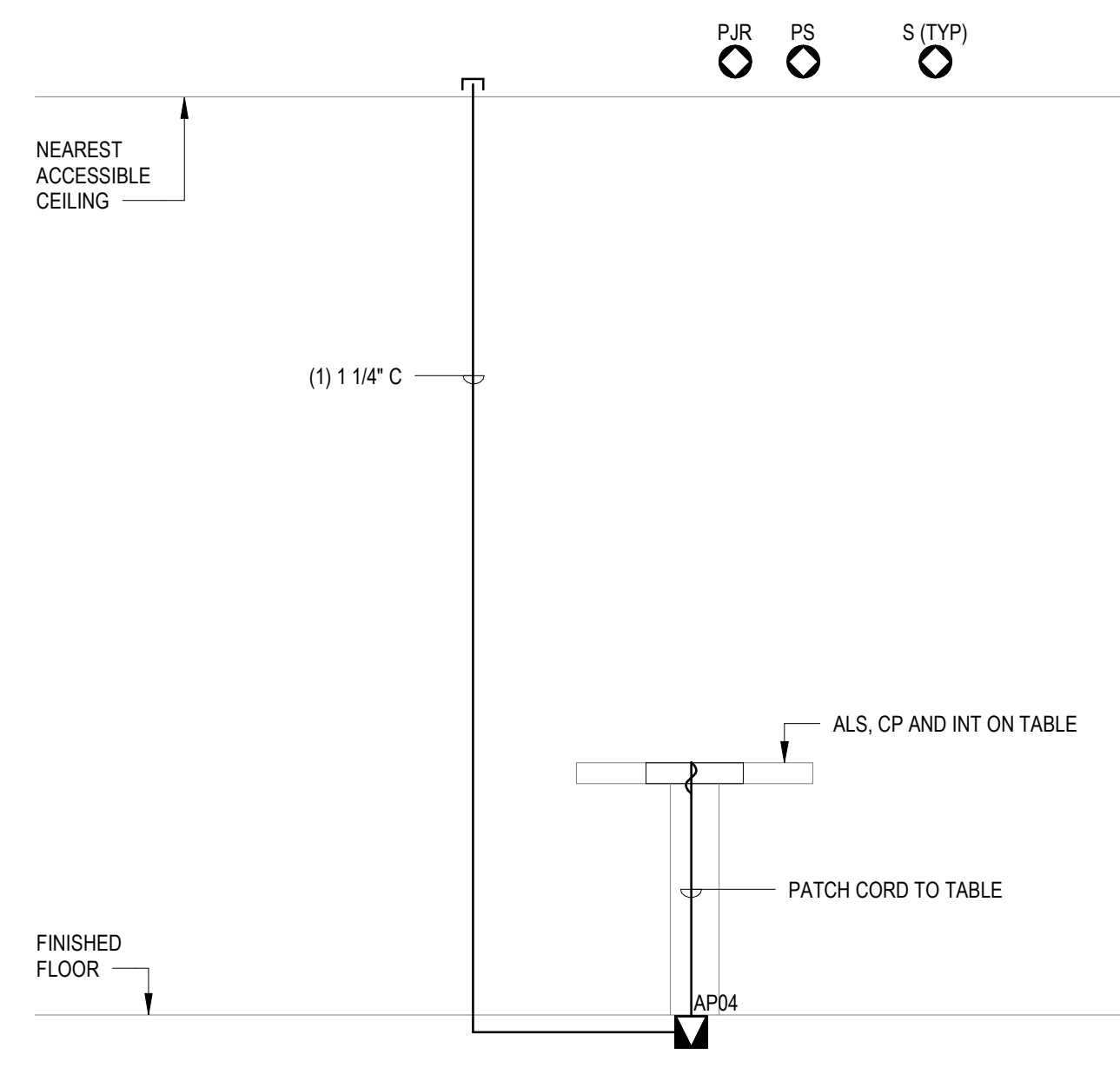
4 INFRASTRUCTURE ELEVATION

SCALE: 1/2" = 1'-0"



7 AUDIOVISUAL FUNCTIONAL DIAGRAM

SCALE: NONE



6 AV PATHWAY DIAGRAM

SCALE: 1/2" = 1'-0"