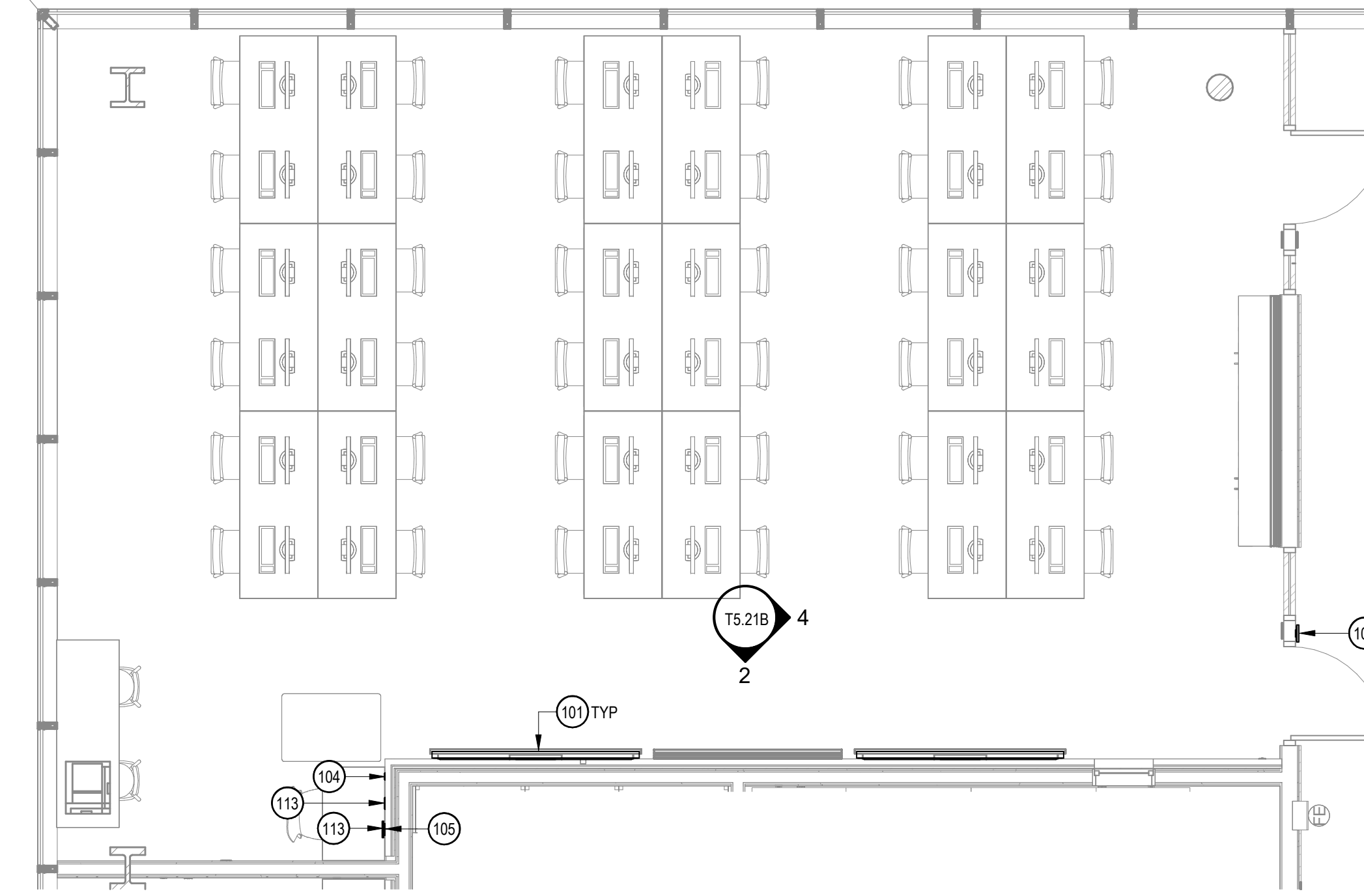
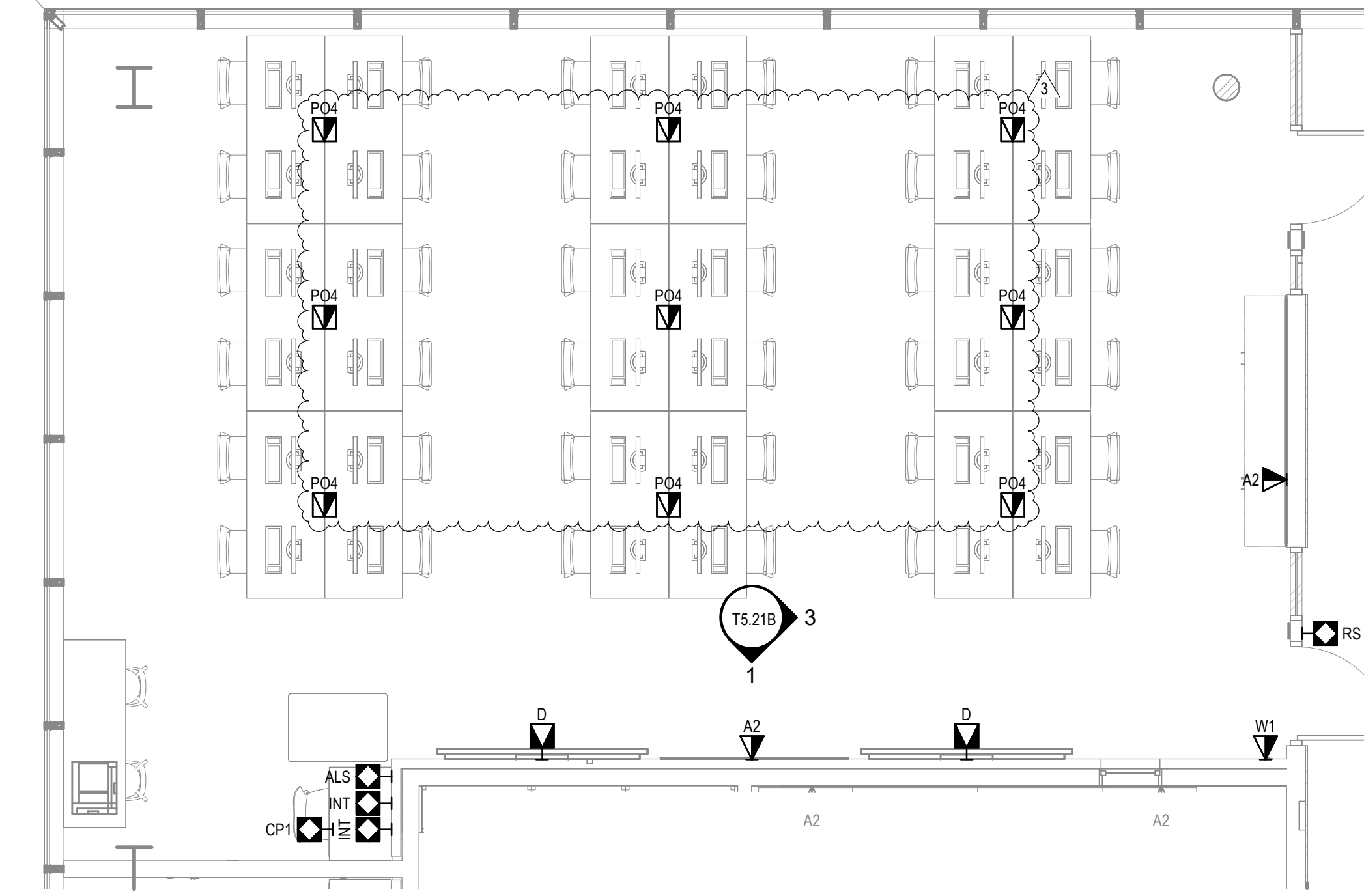


3 REFLECTED CEILING PLAN
SCALE: 1/4" = 1'-0"



2 EQUIPMENT PLAN
SCALE: 1/4" = 1'-0"

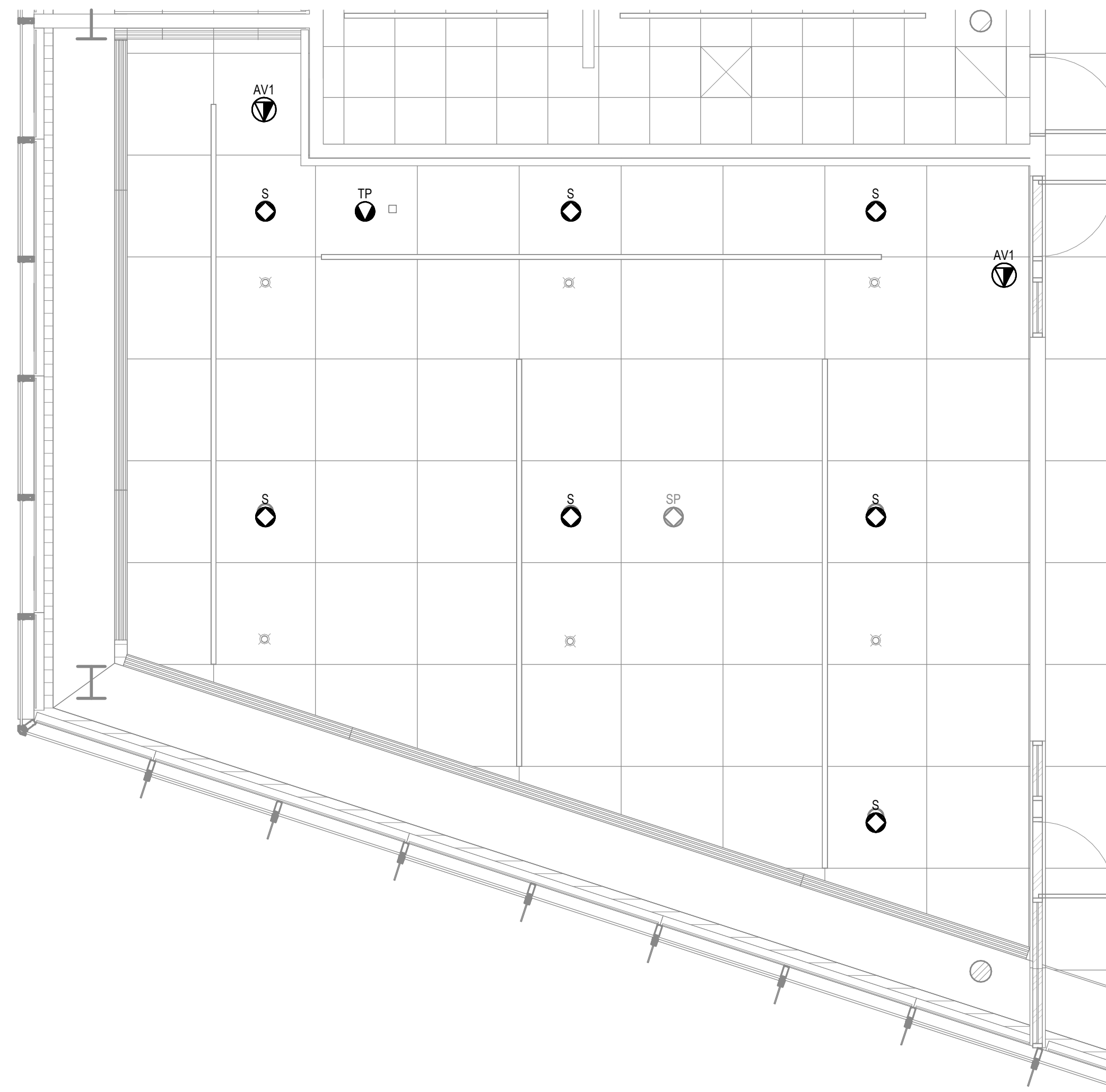


1 INFRASTRUCTURE PLAN
SCALE: 1/4" = 1'-0"

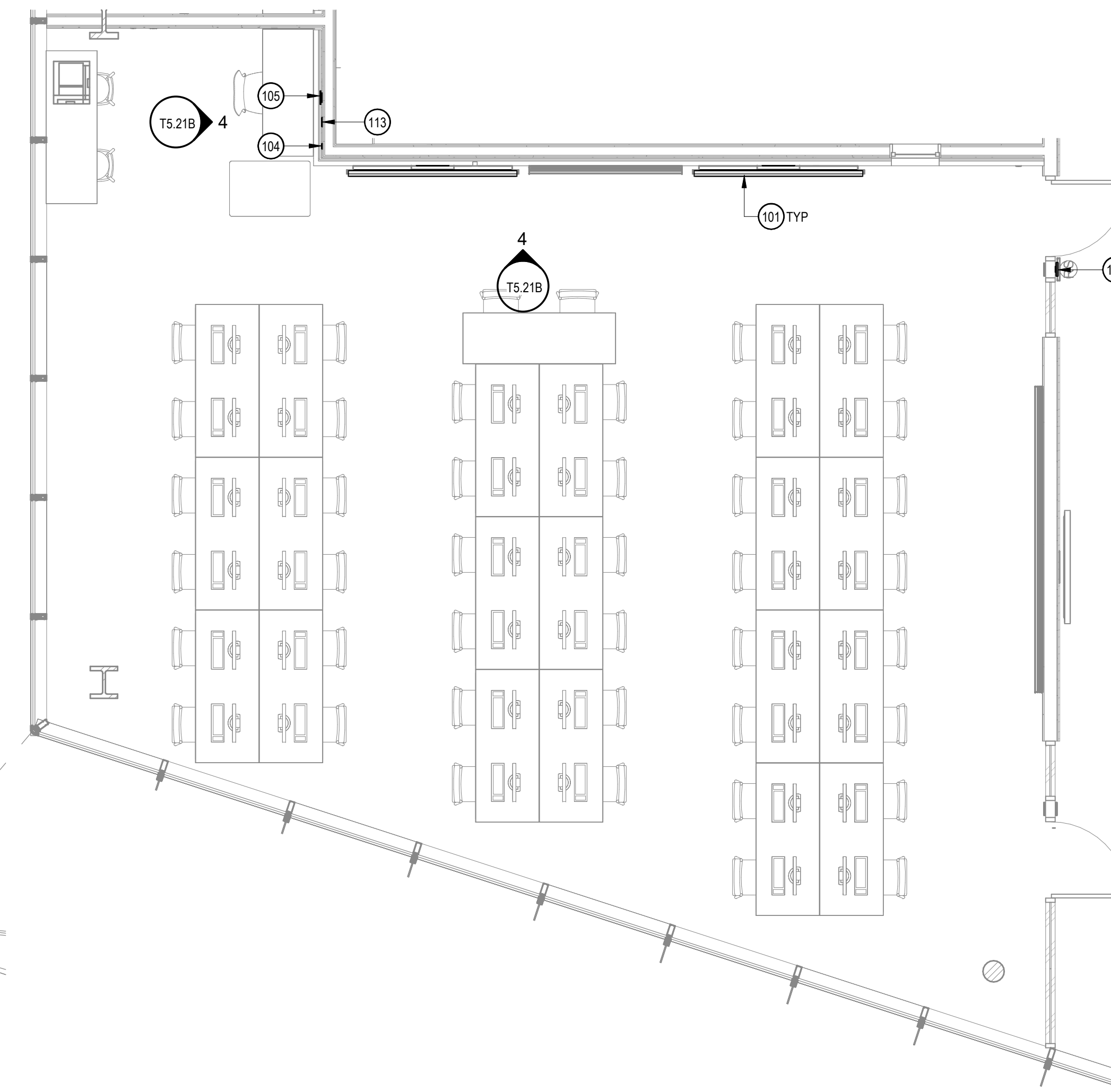
- ### SHEET NOTES
- REFER TO ARCHITECTURAL PLANS FOR EXACT LOCATIONS OF OUTLETS, DEVICES, AND EQUIPMENT. ALSO REFER TO ELECTRICAL PLANS TO COORDINATE FINAL LOCATIONS OF OUTLETS, DEVICES, AND EQUIPMENT.
 - REFER TO OVERALL PLANS FOR TELECOM DEVICES SERVING LOCATIONS.
 - REFER TO SHEET 10.02 FOR PATHWAY REQUIREMENTS.
 - ALIGN CENTER OF DISPLAY TO CENTERLINE OF FURNITURE. REFER TO ARCHITECTURAL DRAWINGS FOR THE FURNITURE LOCATION.
 - REFER TO OVERALL PLANS FOR PROJECTION SCREEN LOCATIONS. CENTER PROJECTOR TO PROJECTOR SCREEN LATERALLY.
 - SEE INSTALLATION DETAIL IN THIS SET.

AV EQUIPMENT LIST

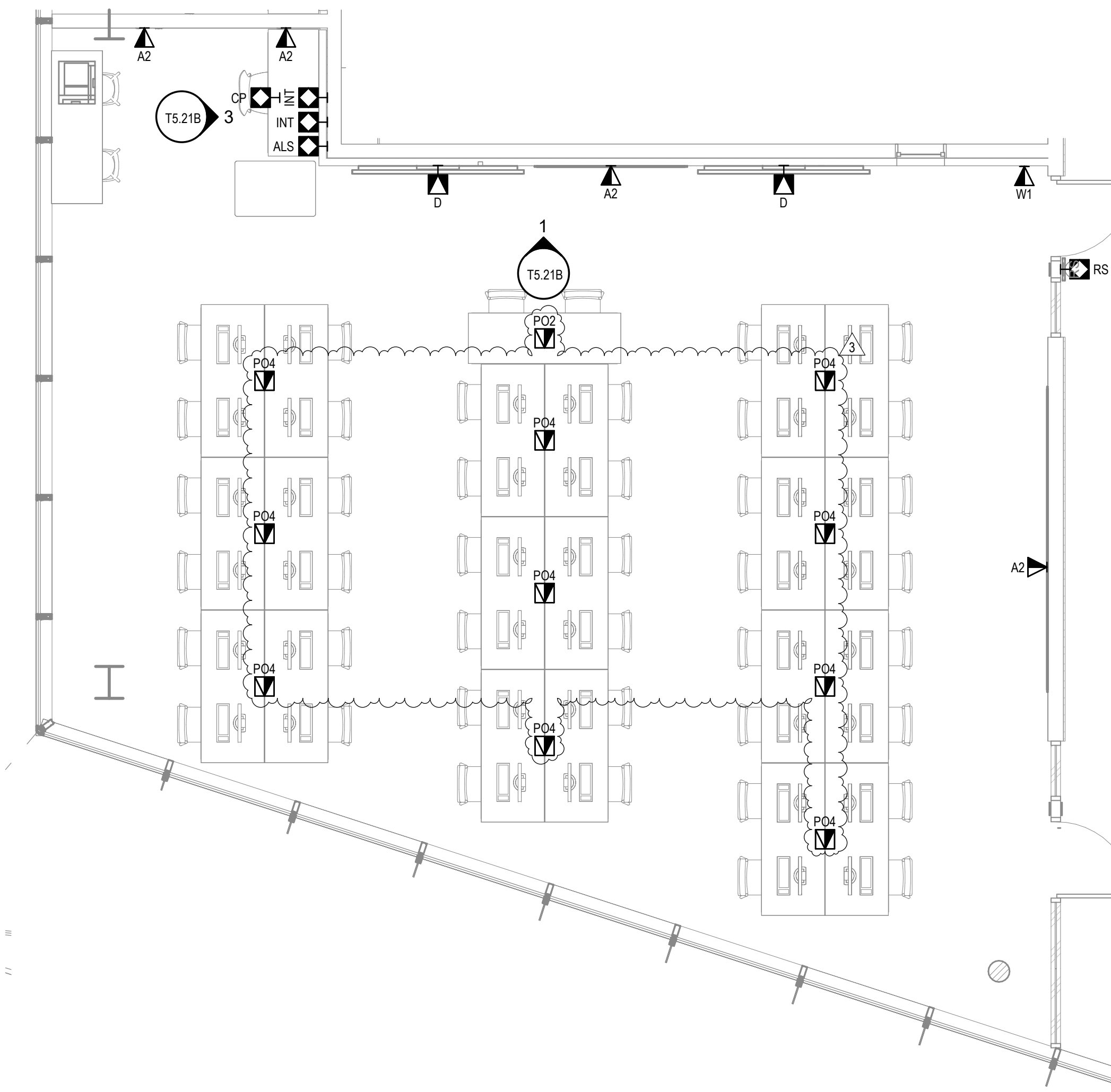
ID	DESCRIPTION
101	WALL MOUNTED DISPLAY
104	ASSISTIVE LISTENING PLATE
105	CONTROL PANEL
108	ROOM SCHEDULER
113	INTERFACE PLATE



6 REFLECTED CEILING PLAN
SCALE: 1/4" = 1'-0"



5 EQUIPMENT PLAN
SCALE: 1/4" = 1'-0"



4 INFRASTRUCTURE PLAN
SCALE: 1/4" = 1'-0"

APPROVALS

NOLL & TAM
ARCHITECTS

729 Heinz Avenue
Berkeley, CA 94710
tel 510.542.2200
fax 510.542.2201

CAVAGNERO
MARK CAVAGNERO ASSOCIATES ARCHITECTS
1845 Katherine Street, Suite 200
San Francisco, California 94111
www.cavagnero.com

SEAL

TEECOM
1322 Broadway
Oakland, CA
94612
www.teecom.com

PROJECT TITLE
Peralta Community College District Laney Library & Learning Resource Center (Building 100 Replacement)
900 Fallon Street, Oakland, CA 94607

ISSUE FOR BID
ISSUE DATE: 03/31/2023
NAT. JOB NUMBER: 21942
REVISIONS:
3 05/16/2024 Addendum No. 03

DRAWN BY: JA CHECKED BY: DM
SHEET TITLE
ENLARGED ROOM PLAN - INSTRUCTIONAL LAB

SHEET NUMBER
T5.21A