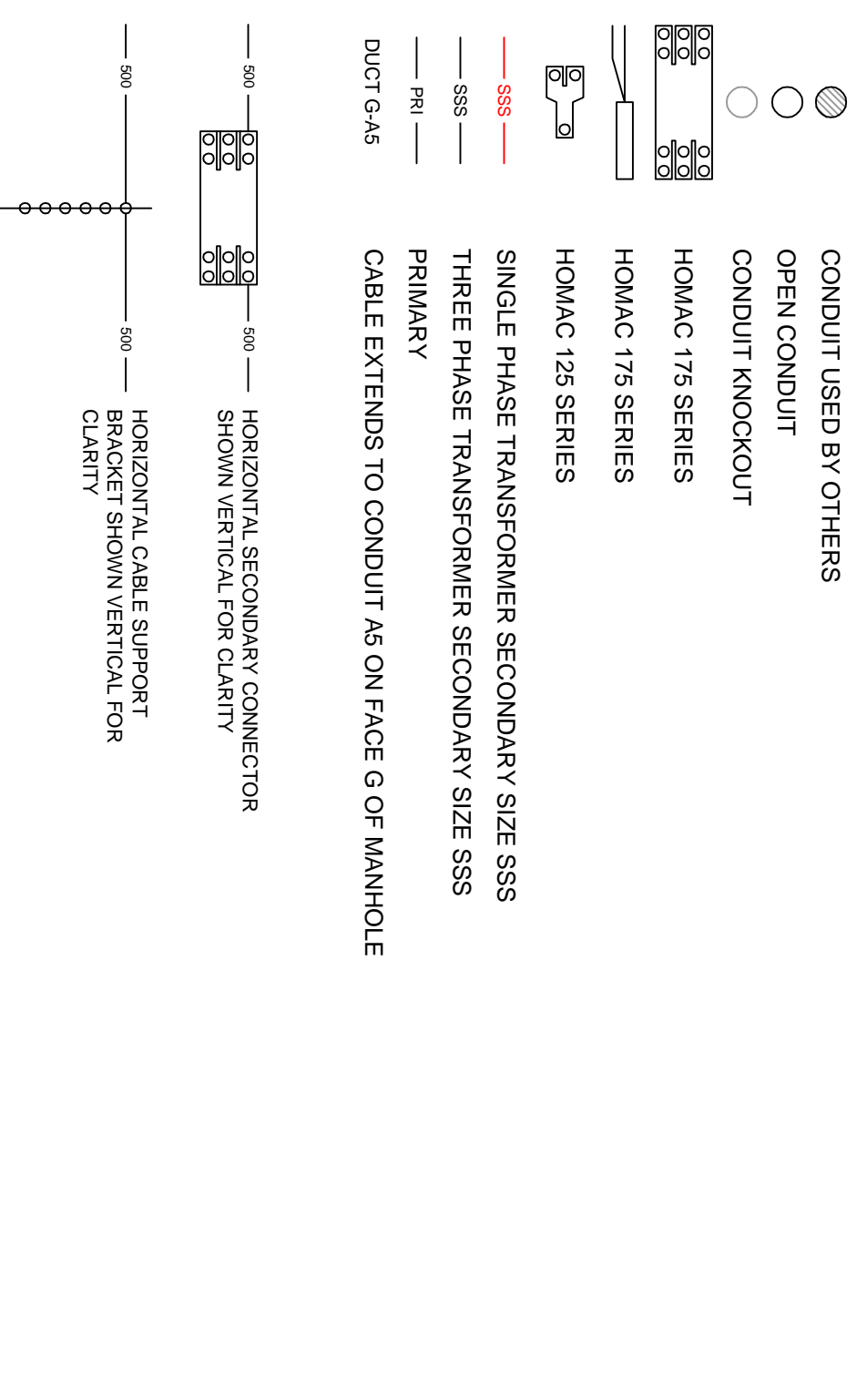


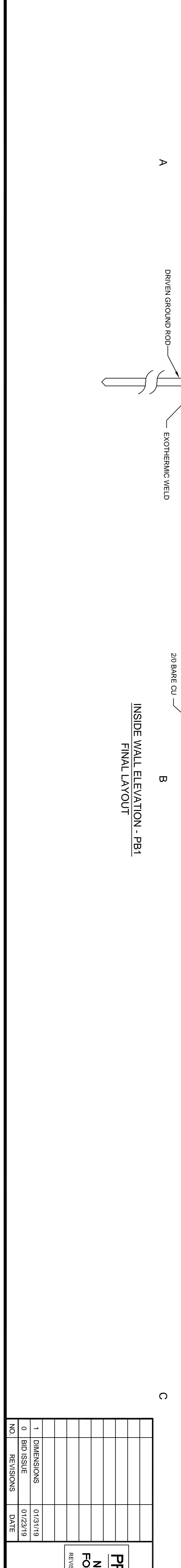
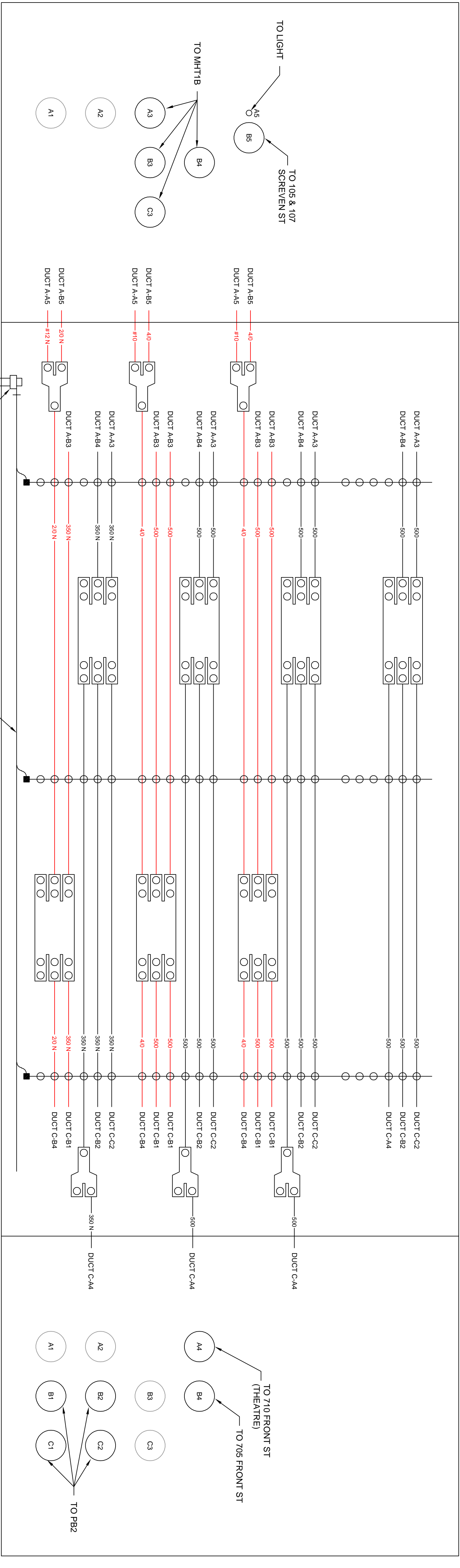
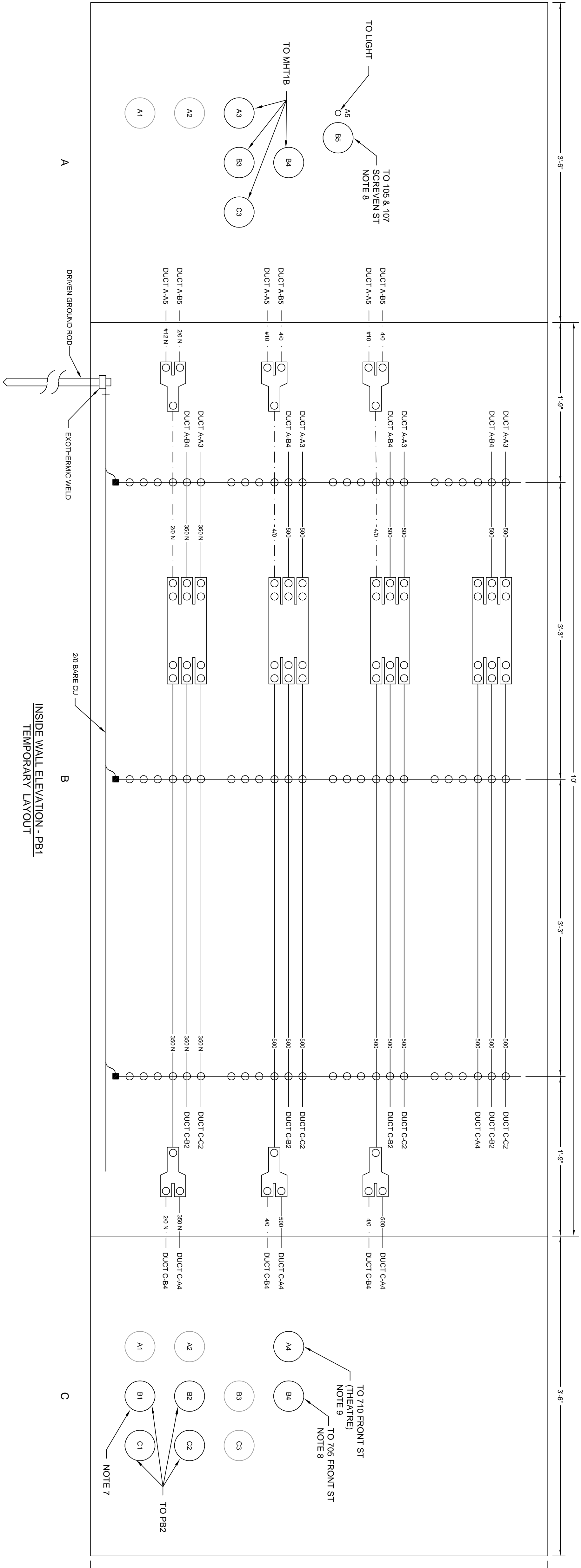
INSIDE WALL ELEVATION - MHT1A
FINAL LAYOUT

- NOTES:**
1. SEE DWG E004 FOR DETAILED CONSTRUCTION SEQUENCE.
 2. VERIFY PHASE ROTATION OF 3-PHASE SERVICES BEFORE DISCONNECTING THE SERVICE FROM THE EXISTING SECONDARY CABLES AND AFTER CONNECTING TO THE NEW SECONDARY CABLE, BUT BEFORE CLOSING THE SERVICE DISCONNECT.
 3. ALL EXISTING SERVICE CABLES TO BE KEPT IF IN ACCEPTABLE CONDITION UNLESS OTHERWISE NOTED. ALL SERVICE CABLES TO BE TAGGED WITH SERVICE ADDRESSES.
 4. RECONNECT ALL LIGHTING/OUTLET CABLES NOT SHOWN ON THE DRAWING.
 5. VERIFY CONDUIT PATHS BEFORE PULLING NEW CABLES.
 6. ALL EXISTING CABLE WALL SUPPORTS SHALL BE REMOVED AND REPLACED. ALL EXISTING CABLE SUPPORT BRACKETS SHALL BE REMOVED AND NEW BRACKETS INSTALLED AS SHOWN. NEW GROUND CABLE SHOULD BE INSTALLED FROM EXISTING GROUND ROD TO NEW CHANNELS.

LEGEND:



<p>CITY OF GEORGETOWN GEORGETOWN, SC</p> <p>FRONT STREET ELECTRICAL UPGRADE CABLE RACKING DETAILS MANHOLE T1A</p>		<p>UTEC UTILITY TECHNOLOGY ENGINEERS - CONSULTANTS P.O. Box 2829 • Ashboro, North Carolina • 27204</p>	
NO.	REVISIONS	DATE	
1	DIMENSIONS	01/31/19	
0	BID ISSUE	01/23/19	
<p>PRELIMINARY NOT TO BE USED FOR CONSTRUCTION</p>			
<p>REVISION _____ 01/31/19</p>			
DATE	DWG. NO.	SHEET NO.	
01/31/19	E012	1 OF 1	



NOTES:

- SEE DWG E004 FOR DETAILED CONSTRUCTION SEQUENCE.
- VERIFY PHASE ROTATION OF 3-PHASE SERVICES BEFORE DISCONNECTING THE SERVICE FROM THE EXISTING SECONDARY CABLES AND AFTER CONNECTING TO THE NEW SECONDARY CABLE, BUT BEFORE CLOSING THE SERVICE DISCONNECT.
- ALL EXISTING SERVICE CABLES TO BE KEPT IF IN ACCEPTABLE CONDITION UNLESS OTHERWISE NOTED. ALL SERVICE CABLES TO BE TAGGED WITH SERVICE ADDRESSES.
- RECONNECT ALL LIGHTING/OUTLET CABLES NOT SHOWN ON THE DRAWING.
- VERIFY CONDUIT PATHS BEFORE PULLING NEW CABLES.
- ALL EXISTING CABLE WALL SUPPORTS SHALL BE REMOVED AND REPLACED. ALL EXISTING CABLE SUPPORT BRACKETS SHALL BE REMOVED AND NEW BRACKETS INSTALLED AS SHOWN. NEW GROUND CABLE SHOULD BE INSTALLED FROM EXISTING GROUND ROD TO NEW CHANNELS.
- CONDUCTOR TO BE PULLED AFTER EXISTING T1 SECONDARY CABLES REMOVED.
- CUSTOMER MUST BE TEMPORARILY CONNECTED TO T1B OPEN-WYE/OPEN-DELTA SECONDARY WHILE T1B SINGLE PHASE TRANSFORMER SECONDARY CABLE IS PULLED THROUGH CONDUIT WHERE EXISTING SECONDARY CABLE MUST BE REMOVED.
- REPLACE EXISTING SERVICE CABLE WITH 500 KCMIL PHASE, 350 KCMIL NEUTRAL.

LEGEND:

- CONDUIT USED BY OTHERS
- OPEN CONDUIT
- CONDUIT KNOCKOUT
- HOMAC 175 SERIES
- HOMAC 125 SERIES
- SINGLE PHASE TRANSFORMER SECONDARY SIZE SSS
- THREE PHASE TRANSFORMER SECONDARY SIZE SSS
- TEMPORARY SECONDARY SERVICES SIZE SSS
- PRIMARY
- DUCT C-A5



NO.	REVISIONS	DATE
1	DIMENSIONS	01/31/19
0	BID ISSUE	01/23/19
	REVISIONS	

PRELIMINARY
NOT TO BE USED
FOR CONSTRUCTION

REVISION _____ DATE 01/31/19

CITY OF GEORGETOWN
GEORGETOWN, SC
FRONT STREET ELECTRICAL UPGRADE
CABLE RACKING DETAILS
PULLBOX 1

UTEC
UTILITY TECHNOLOGY
ENGINEERS - CONSULTANTS
P.O. Box 2829 • Ashboro, North Carolina • 27204

DATE 01/31/19 DWG NO. E021
SCALE 1/4" = 1'-0" SHEET NO. 1 OF 1