



Pittsburg Community Schools - USD 250
Request for Proposal

PHS Auditorium House Lighting Upgrade - RFP

Dear Vendor,

The Board of Education of Unified School District 250, Pittsburg, Kansas, will receive a bid for house light improvements in the Pittsburg High School auditorium located at 1978 W. 4th Street, Pittsburg, Kansas 66762.

Bids will be received on or before 9:00 A.M. CST, Wednesday, January 7, 2026, in the Bevan Education Center, 510 Deill Street, Pittsburg, Kansas, 66762. Bid proposal sheets should be sealed and delivered by mail or in person to Attn: Tom Stegman, Chief Operations Officer

Indicate on the envelope **“PHS Auditorium House Lighting Upgrade”**.

Contact Tom Stegman, Chief Operations Officer at (620) 235-3100 or tstegman@usd250.org, if you have any questions.

Thank you for your interest in the District's bid invitation. The Board of Education reserves the right to accept or reject any or all bids. Your company will remain on our list of vendors for future bids unless you notify us that you do not wish to receive this information.

Regards,

Tom Stegman
Chief Operations Officer

Enclosures



Pittsburg Community Schools - USD 250

Overview and Background:

The house lighting system in the Pittsburg High School auditorium uses outdated incandescent bulbs that are difficult to replace. The district is requesting to update to a specific light to ensure that the new lights will function adequately with the current lighting control system.

Project Goals:

Pittsburg Community Schools - USD 250 is seeking sealed bids for upgrades to the PHS Auditorium from incandescent to LED house lights.

General Information and specification(s):

The following are the requirements for purchase:

- (1) - The district is requesting ninety (90) house lights
- (2) The following house light specification request for bid:
 - (a) Canto RETRO-Fusion 2.0 150
 - (i) - 120 V 150 Tall with 3000K (Standard) 80 CRI LED Chip
 - (ii) Top Style - E26 Edition - 1.35 Inch Length (Default Top)
 - (iii) Reflector Short 56 Degrees
- (3) The bid should include all fees, including freight or shipping fees
- (4) An installation fee is not required for this request for proposal (RFP). The district will install these lights as specified by the light manufacturer.

NOTE: This specific Light fixture specification sheet and information are attached to this document for reference.



Pittsburg Community Schools - USD 250

RETRO-Fusion™ 2.0 150

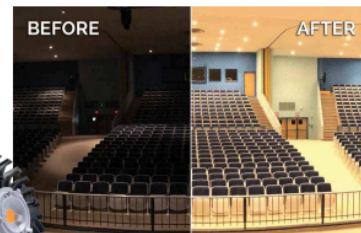
150W Incandescent Replacement LED Engine
120V • 230V • 240VAC

CANTOUSA
INNOVATIVE LIGHTING PRODUCTS

Energy efficient LED Light Engine

Designed to retrofit directly into existing fixtures.

The RETRO-Fusion 2.0 is a CSA listed retrofit kit that rapidly transforms existing inefficient incandescent fixtures into energy efficient LED fixtures. Our patented technology allows the fixture to smoothly dim from 0-100% utilizing existing dimming technology. Retrofit kits are available with a variety of options for both recessed and pendant style fixtures. Installation is as easy as changing a light bulb. Our LED technology creates even fields and delivers consistent color. The RETRO-Fusion 2.0 150 delivers more light than most 150 watt incandescent bulbs it replaces with only a 17 watt load.



Fairfax High School, Fairfax, Virginia
105 RETRO 500s at 3000K
Installed by Artistic Concepts Group

What the Fusion 2.0 IS

- More cost effective than fixture replacement
- Large lumen output for this market
- Listed for screw in replacement
- Field swappable tops
- Serviceable safety cable
- Dims on existing dimming systems with no additional installation of control system
- 0-100% dimming without flicker, pulse, or stepping
- 80+ High CRI
- Standard 5 Year Limited Warranty. An extended warranty of up to 5 additional years can be added at the time of purchase

Electrical Data

- 17 Watts (17.5)
- Lumens 2103 @ 2700K
- Power Factor (PF) .9886
- Lumens per Watt: 120.17
- LM 70: >50,000 Hours
- CRI@2700K: 81.83,R9+3
- 1 lb 5.2 oz - 6 oz w/Reflector (.602 - .624 kg)

Applications

- 9 feet to 20 feet high ceilings (2.75 to 6 meter high ceilings)
- Where dimming is a key concern
- Where there is no desire or budget to replace existing fixtures
- Where access is limited
- Where a custom solution is required
- Where the ceiling cannot be disturbed

Typical Installations

- Auditoriums
- Churches and houses of worship
- Arenas
- Lobbies
- Museums
- Educational facilities
- Convention centers

Top Types

E26 - Edison
E11 - Mini Candelabra
E39 - Mogul *
BA15D *
Par Ring/Bare Wire
Bi-Pin
Custom Options

CCT Lumen Output

2700K: 2103 Lumens
3000K: 2217 Lumens
3500K: 2261 Lumens
4000K: 2314 Lumens
5000K: 2354 Lumens

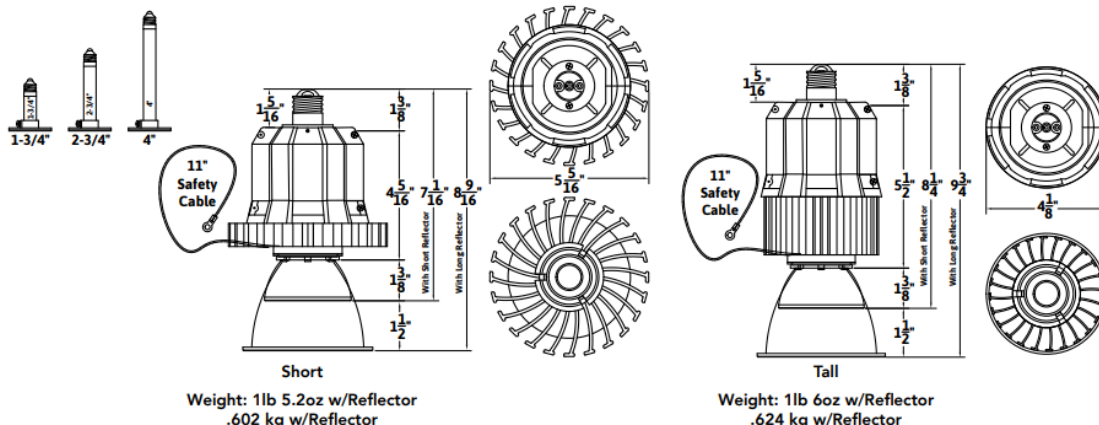
Fixture Reflectors

Tall 11 Degrees
Tall 20 Degrees
Tall 47 Degrees
Short 15 Degree
Short 28 Degree
Short 56 Degrees
Short 74 Degrees
None 120 Degrees

Color Temp

2700K -
3000K - Standard
3500K -
4000K -
5000K -

Fixture Drawing





Pittsburg Community Schools - USD 250

RETRO-Fusion™ 2.0 150

150W Incandescent Replacement LED Engine
120V • 230V • 240VAC



Order Guide

1. RETRO

00	F2	150			
	LIGHT	VOLTAGE	FIXTURE TYPE	SINK SIZE	COLOR TEMP
	F2	120 230	150	S (Short) T (Tall)	2.7K 3.0K 3.5K 4.0K 5.0K
					CRI
					80 *90 *95 *97

2. TOPS

00	TOP		
	TOP	TYPE	LENGTH
		E26 → 1.35" or *CCC E11 → 1.75", 2.75", 4.00" or *CCC BW (Bare Wire) → 12" min, increase in 6" increments	

*Custom height in inches to the nearest 1/4" from the top of the plate to the tip.

* Chips with a CRI greater than 80 are an additional 6 weeks beyond standard delivery

3. REFLECTOR

00			
	REFLECTOR	DEGREE	SIZE
	REF	15 → T 23 → T 46 → T 26 → S 40 → S 59 → S 70 → S	
	ZOR (ZORYA)	25	

4. ADAPTER & EXTENDER OPTIONS

00		
	TYPE	TYPE
	ADP → *BAYONET (BA15D) ADP → *MOGUL (E39 TO E26) EXT → 1.25" or 2.5"	

*E39 and BA15D require an E26 top with adapters used to make this unit compatible with these top types.

5. DIFFUSERS

00	DIF	
	DIFFUSER	TYPE
	DIF	SMALL (For Shorts) LARGE (For Talls) KIT (For Shorts and Talls)

Photometrics (R150) 3,000K

Multiplication Factor for Color Temperature

- to convert to 2,700 Kelvin - fc X .9488
- to convert to 3,500 Kelvin - fc X 1.0196
- to convert to 4,000 Kelvin - fc X 1.0439
- to convert to 5,000 Kelvin - fc X 1.0617

To Solve Footcandles Over A Distance: Peak Output ÷ (Distance X Distance)
To Solve Area Over A Distance: Distance X Mult.Factor

15°	28°	56°	74°
Peak Output 12,338fc	Peak Output 4,610fc	Peak Output 2,134fc	Peak Output 1,134fc
Distance	Distance	Distance	Distance
8' → 2'	8' → 4'	8' → 9'	8' → 11'
10' → 3'	10' → 5'	10' → 11'	10' → 14'
20' → 5'	20' → 10'	20' → 21'	20' → 28'
30' → 8'	30' → 15'	30' → 32'	30' → 42'
40' → 11'	40' → 20'	40' → 42'	40' → 56'
7	2	1	.1

11°	20°	47°	120°
Peak Output 23,360fc	Peak Output 11,313fc	Peak Output 2,864fc	Peak Output 1,134fc
Distance	Distance	Distance	Distance
8' → 1.5'	8' → 3'	8' → 7'	8' → 28'
10' → 2'	10' → 4'	10' → 9'	10' → 31'
20' → 4'	20' → 7'	20' → 17'	12' → 35'
30' → 6'	30' → 11'	30' → 25'	15' → 42'
40' → 8'	40' → 14'	40' → 34'	20' → 52'
365	206	52	14
233	127	34	11
58	26	7	9
26	12	3	6
14	6	1	4

Contact your local representative or dealer for IES files.





Pittsburg Community Schools - USD 250
PROPOSAL
PHS House Lighting Upgrade

To: USD #250 Board of Education, Pittsburg Community Schools, PO Drawer 75, Pittsburg, KS 66762

1. The Undersigned hereby certifies that they have provided a bid for a Canto-RETRO Fusion 2.0 150 150W Incandescent Replacement LED Engine included on the specifications sheets per this bid proposal for Pittsburg Community Schools. The bid further certifies that any deviations from the specifications have been listed precisely on the included deviations page.
2. The Undersigned further agrees to provide a signed W-9 with invoicing once awarded the bid.
3. Proposal – Additional auditorium house lighting options may be listed **on the back** of the Proposal or included on an additional page.
4. Proposals will be received by Pittsburg Unified School District#250 at the Board of Education Office. Attention Tom Stegman, located at 510 Deill Street, Pittsburg, Kansas, 66762, no later than **Wednesday, January 7, 2026, at 9:00 A.M. CST**, opened and read aloud beginning at the same time. Bids should be marked on the envelope "**PHS Auditorium House Lighting Upgrade.**" Bids received after said time will be returned unopened. The Pittsburg USD #250 Board of Education reserves the right to reject any bids and to waive any irregularities therein, and that this bid may not be withdrawn for thirty (30) days from the opening thereof.

Signed this _____ day of , _____ 2026.

Name of Company _____
Authorized Officer _____ Printed Name _____
Title _____
Address _____
City State Zip _____
Telephone Fax _____ email _____



Pittsburg Community Schools - USD 250
DEVIATIONS
PHS Auditorium House Lighting Upgrade

If the undersigned Bidder intends to deviate from the specifications by utilizing any different materials, items, treatments, finishes, construction, etc., contrary to those listed as standards in the specification, then the Bidder must list all deviations on this form. If there are no deviations, then the Bidder shall enter "NO DEVIATIONS" on this form. The Bidder then assures the Buyer of their full compliance with the specifications and conditions.

****FAILURE TO LIST SUCH DEVIATIONS WILL RESULT IN DISQUALIFICATION OF THE BIDDER****

_____ No deviations.

_____ Deviations listed below.

APPROVED _____ DISAPPROVED _____ SUBMITTED FOR CONSIDERATION

BUYER BIDDER _____

SIGNED SIGNED _____