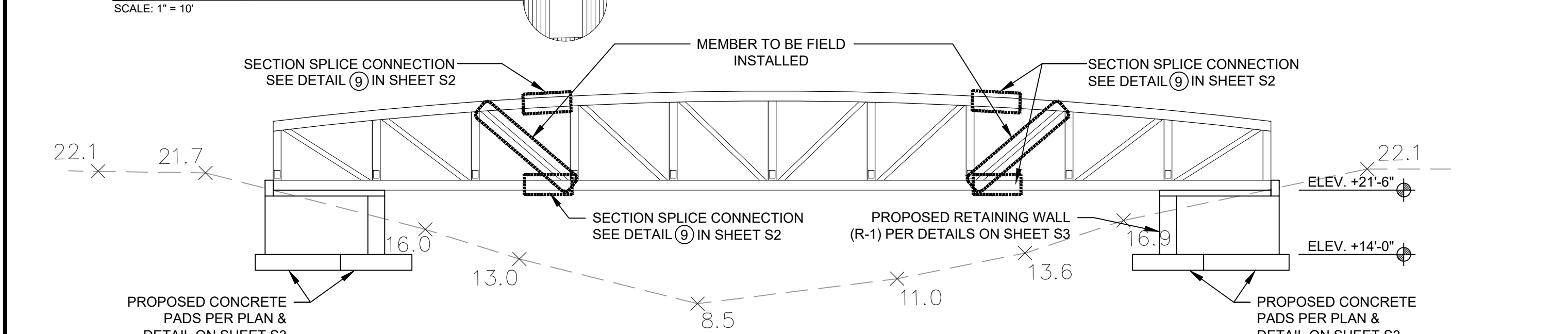
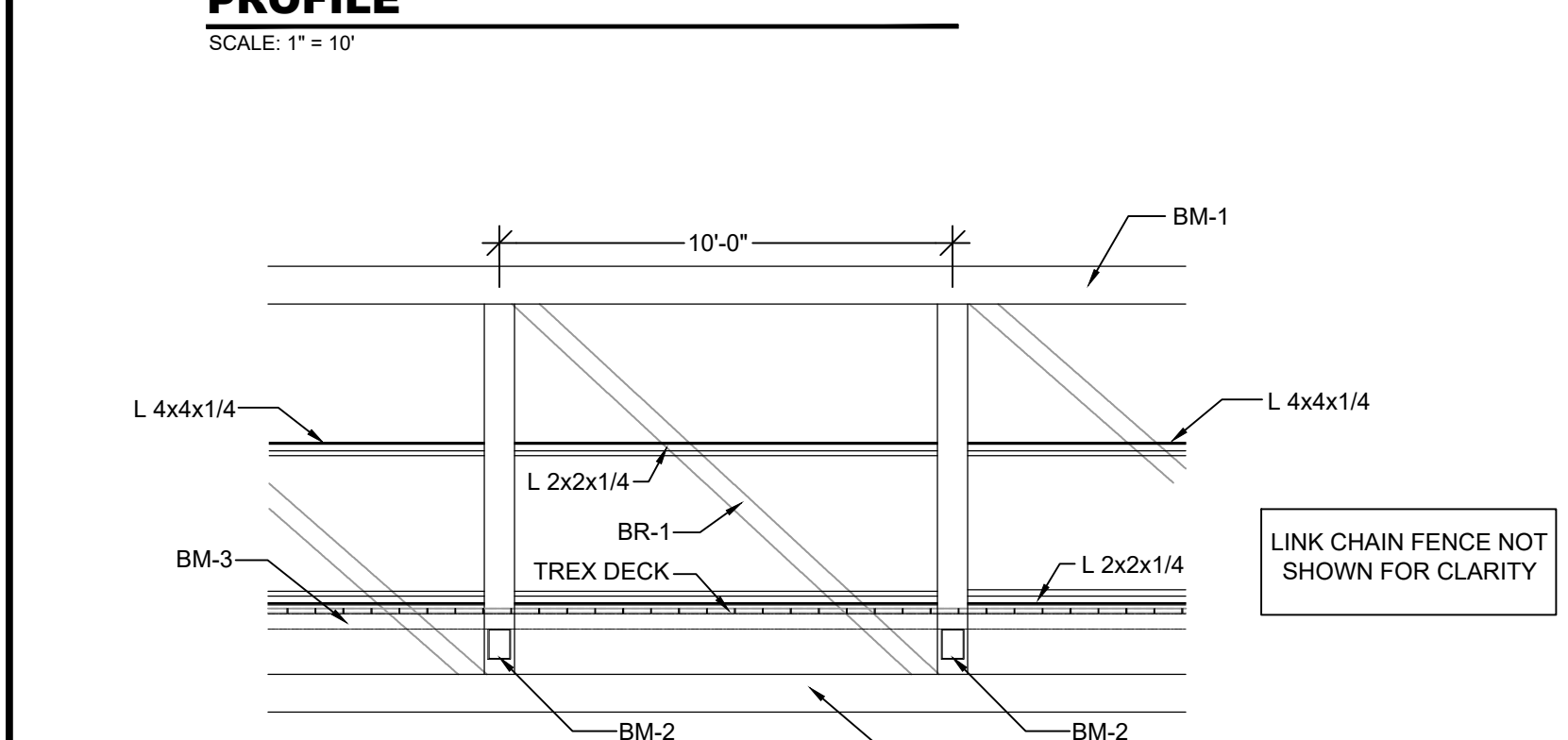


PLAN VIEW
SCALE: 1" = 10'



PROFILE
SCALE: 1" = 10'



DETAIL A-A
SCALE: 1/4" = 1'-0"

Table with 4 columns: MARK, TYPE, REINFORCEMENT / CONNECTION, NOTES. Lists member schedule for beams, columns, braces, and concrete footing.

Table with 4 columns: PAY ITEM NO., DESCRIPTION, UNIT, PROJECT QUANTITY. Lists roadway pay items like embankment, concrete, and riprap.

SUMMARY OF PAY ITEMS

120-1 The unit price paid per cubic yard includes all costs for excavation shown on the plans, protection and relocation of substructures, and placing fill on site to support the bridge substructure.

ABBREVIATIONS table listing symbols and their meanings for various construction components.

STRUCTURAL-GENERAL NOTES
DESIGN CRITERIA AND LOADS:
1. WIND DESIGN: WIND SPEED (MPH) [PER SDG TABLE 2.4.1-1] V(ADJ)=132 V(ULT)=170...
2. DESIGN LIVE LOADS: a. LIVE LOADS: 90 PSF... b. RAILING & GUARDRAILS: 50 LBS/FT OR 200 LBS TO BE APPLIED...
3. DESIGN DEAD LOADS: a. COMPOSITE DECK DEAD LOAD 5 PSF...
4. THE CONTRACTOR HAS THE RESPONSIBILITY TO NOTIFY THE STRUCTURAL ENGINEER OF RECORD (SER) OF ANY ARCHITECTURAL, MECHANICAL, ELECTRICAL, OR PLUMBING LOAD IMPOSED ONTO THE STRUCTURE THAT DIFFERS FROM, OR THAT IS NOT DOCUMENTED ON THE ORIGINAL CONTRACT DOCUMENTS...

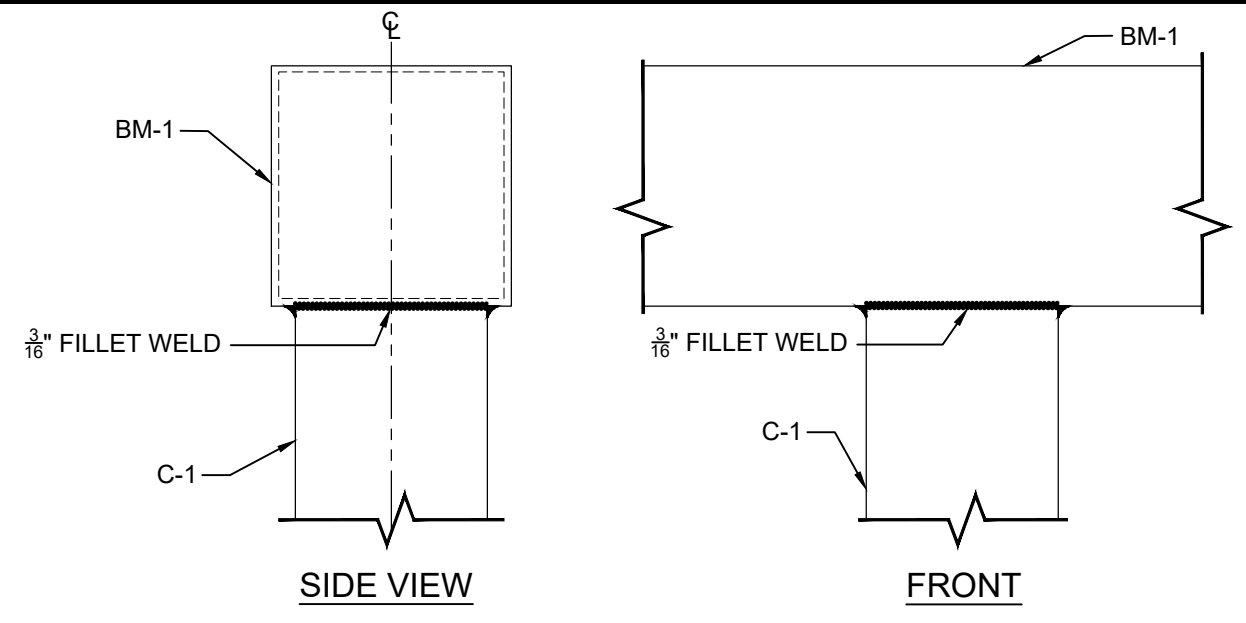
FAMILIAR WITH THE WORK REQUIRED IN THE CONSTRUCTION DOCUMENTS AND THE REQUIREMENTS FOR EXECUTING IT PROPERLY.
FOUNDATION AND SLABS ON GRADE
1. FOUNDATION IS DESIGNED BASED ON PRESUMPTIVE SAFE ALLOWABLE BEARING PRESSURE OF 2,000 PSF. CONTRACTOR SHALL VERIFY THAT THE MINIMUM BEARING PRESSURE IS OBTAINED PRIOR TO FOOTING PLACEMENT.
2. THE ARCHITECT/ENGINEER ASSUMES NO RESPONSIBILITY FOR ANY INTERPRETATION THAT THE SUBSURFACE CONDITIONS DESCRIBED IN THE TEST BORING LOGS OCCUR CONSISTENTLY THROUGHOUT THE JOB SITE...
3. REINFORCED FOUNDATION REQUIREMENTS USED IN THE DESIGN:
a. MINIMUM DEPTH BELOW FINISHED GRADE..... 1'-0"
b. MAXIMUM ALLOWABLE BEARING CAPACITY..... 2,000 PSF
c. MODULUS OF SUBGRADE REACTION..... 200 PCI
d. PASSIVE LATERAL PRESSURE..... 250 PSF
e. ACTIVE LATERAL PRESSURE (UNRESTRAINED)55 PSF
f. ACTIVE LATERAL PRESSURE (RESTRAINED).....35 PSF
g. COEFFICIENT OF SLIDING FRICTION.....0.4
5. ALL FOUNDATION CONCRETE SHALL BE CAST IN THE DRY. DEWATERING OPERATION SHALL BE DONE IN SUCH A WAY THAT GROUND WATER LEVELS OUTSIDE THE SITE WILL BE MAINTAINED TO AVOID SETTLEMENT AND DAMAGE TO NEARBY BUILDINGS AND STRUCTURES.

Project title block containing: 1835 - 20TH STREET, VERO BEACH, FL 32960, PH. (772) 569-0055, FAX. (772) 778-3617, MELBOURNE, FL - PH (321) 253-1510, FT. PIERCE, FL - PH (772) 468-9055. Includes MBV Engineering, Inc. logo and project name: JACKIE ROBINSON TRAINING COMPLEX WALKING TRAIL.

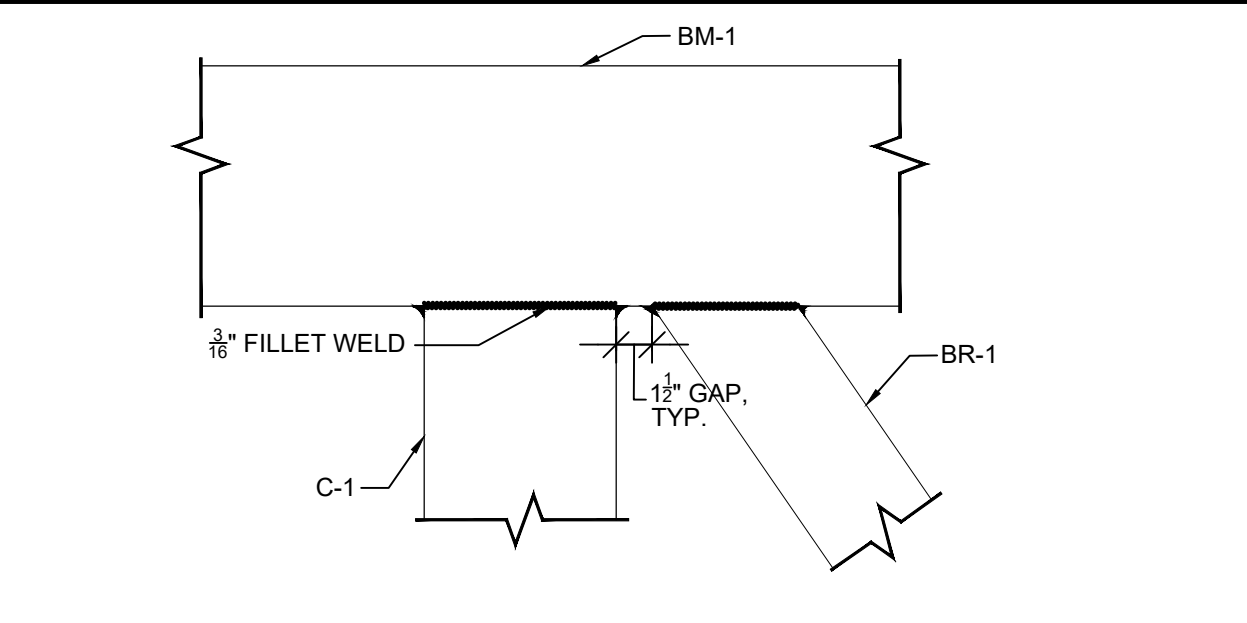
Professional Engineer seal for Rodolfo Villamizar, License No. 61000, State of Florida, dated 06-20-2023. Includes digital signature and date: 6/20/2023. SHEET S1 OF 4.

19-0077

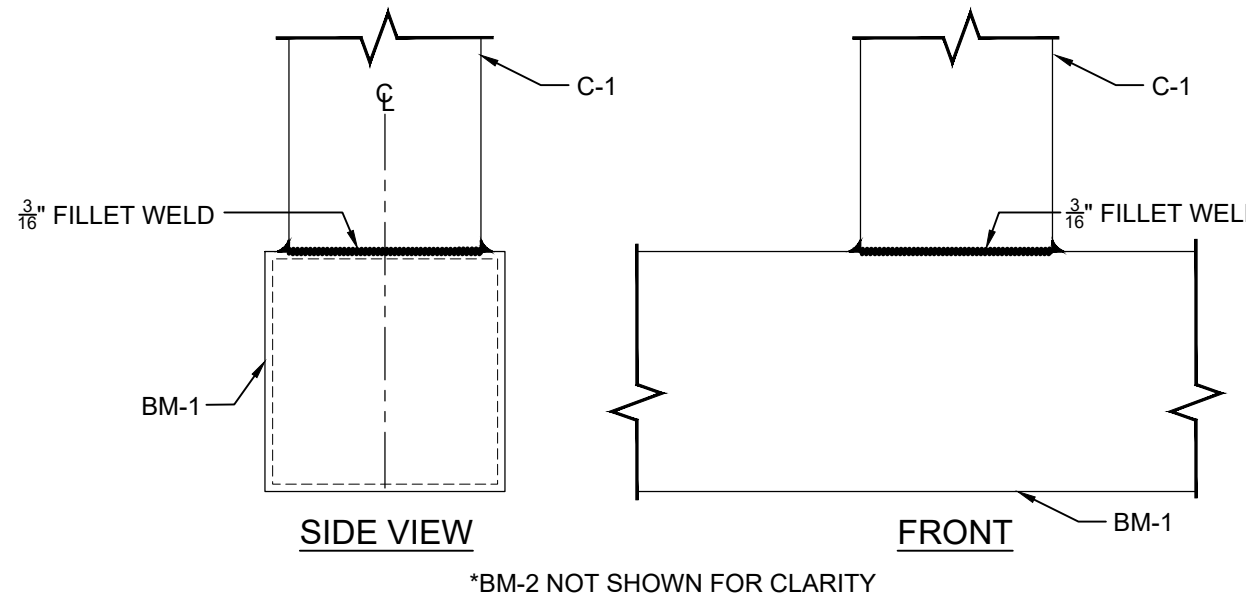
19-0077



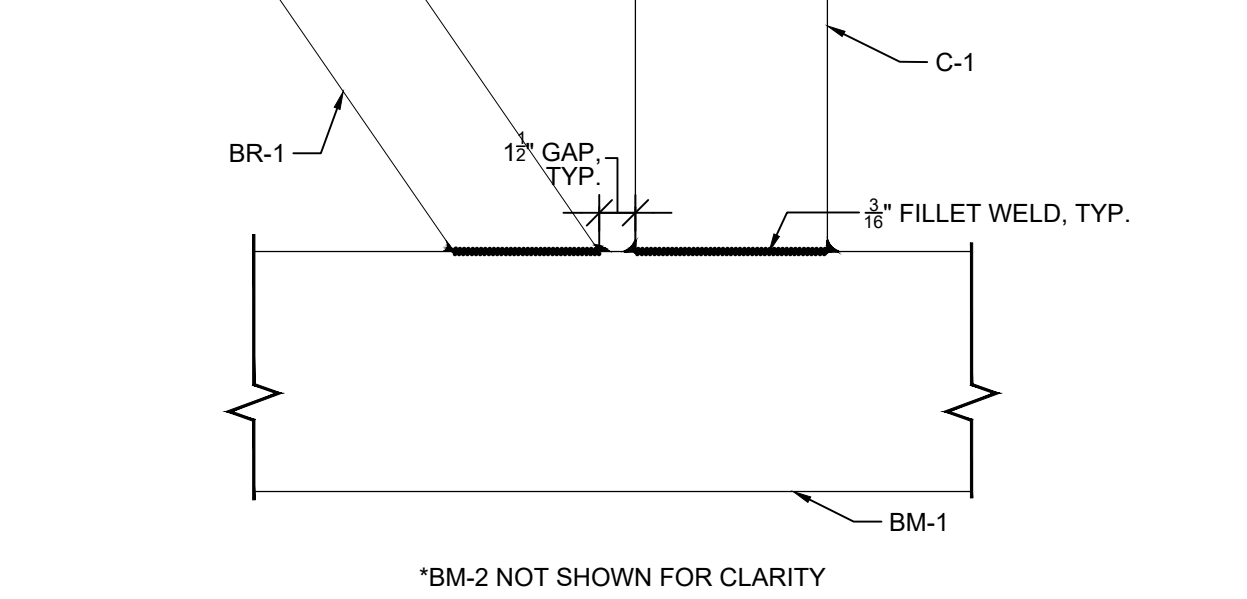
COLUMN AT TOP BEAM CONNECTION DETAIL
SCALE: 1 1/2" = 1'-0"



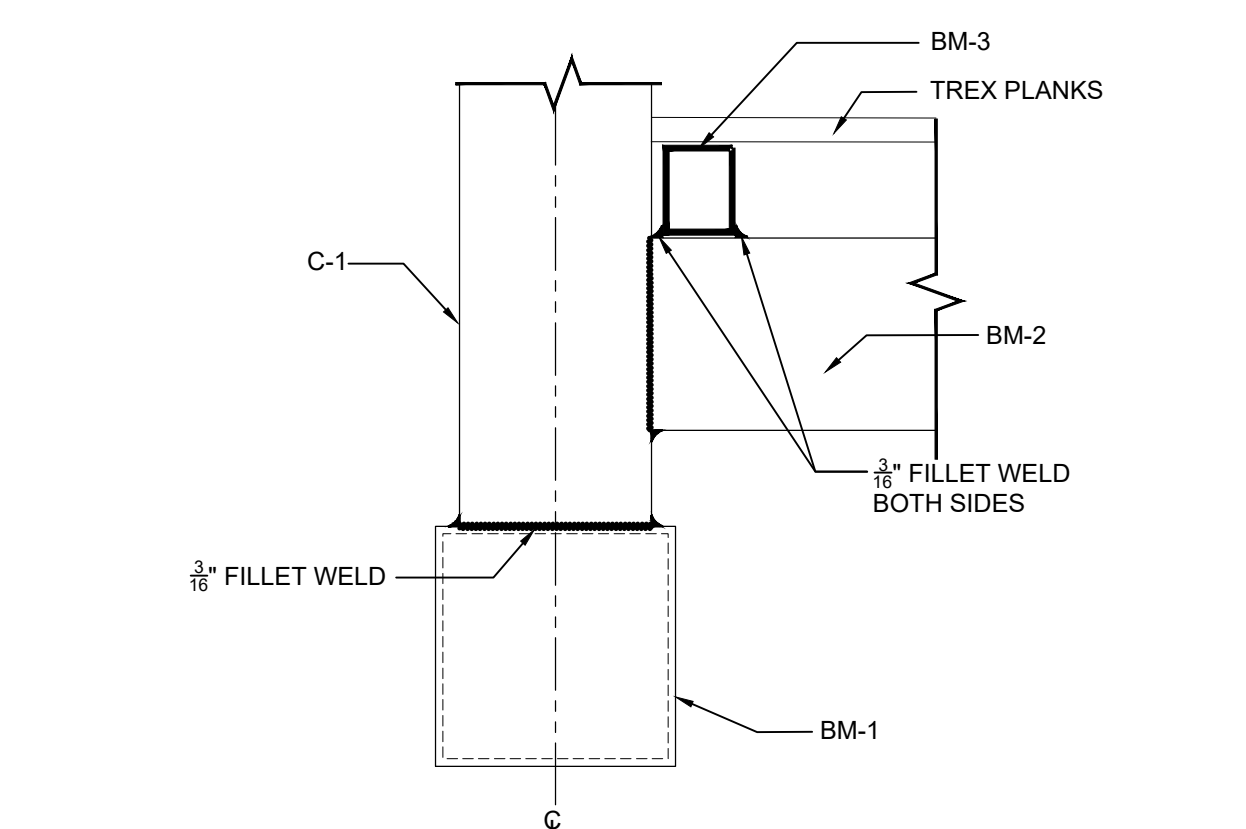
DIAGONAL BRACE AT TOP BEAM CONNECTION DETAIL
SCALE: 1 1/2" = 1'-0"



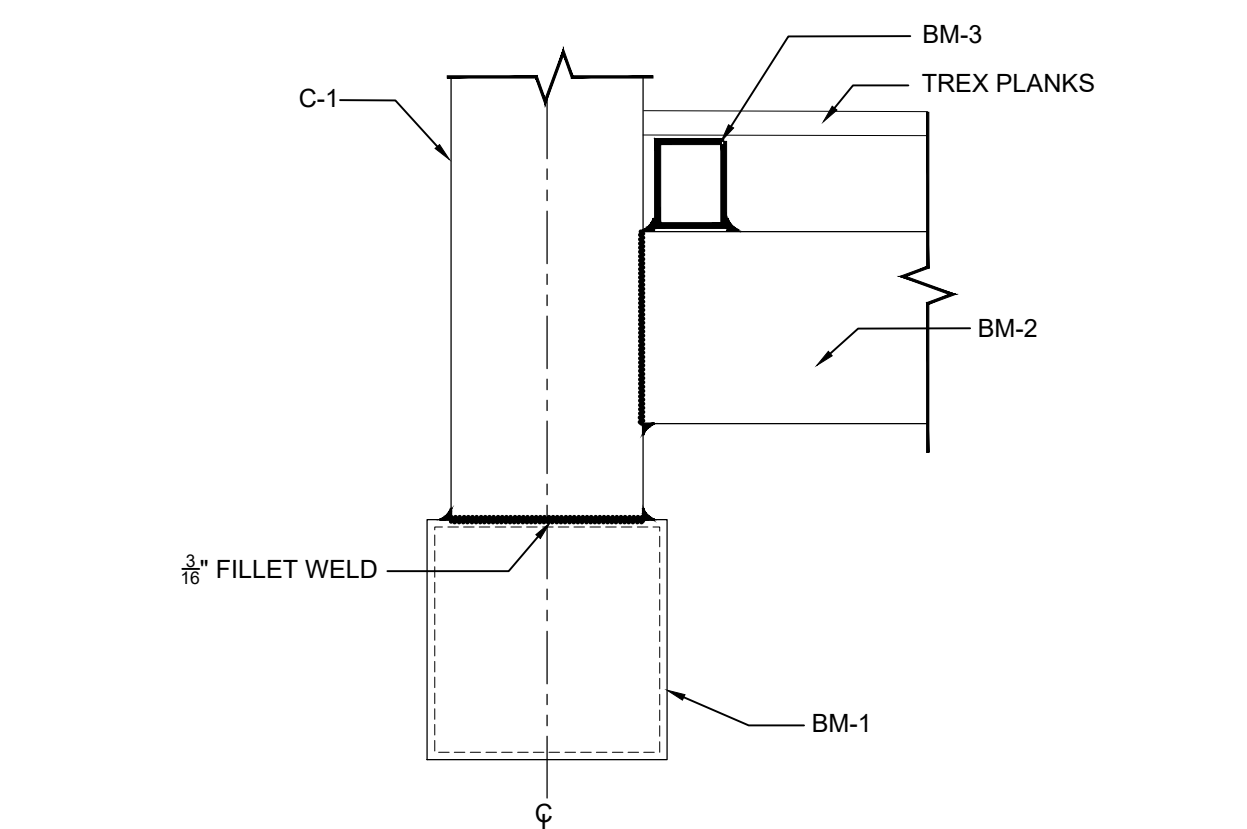
COLUMN AT BOTTOM BEAM CONNECTION DETAIL
SCALE: 1 1/2" = 1'-0"



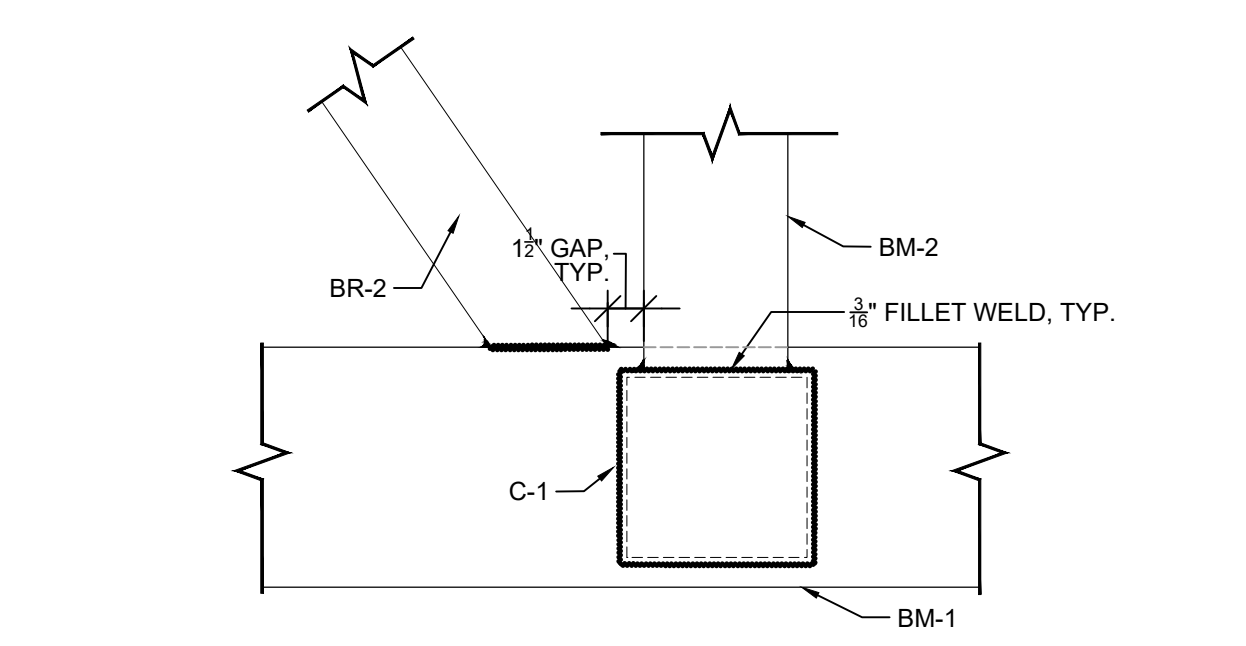
DIAGONAL BRACE AT BOTTOM BEAM CONNECTION DETAIL
SCALE: 1 1/2" = 1'-0"



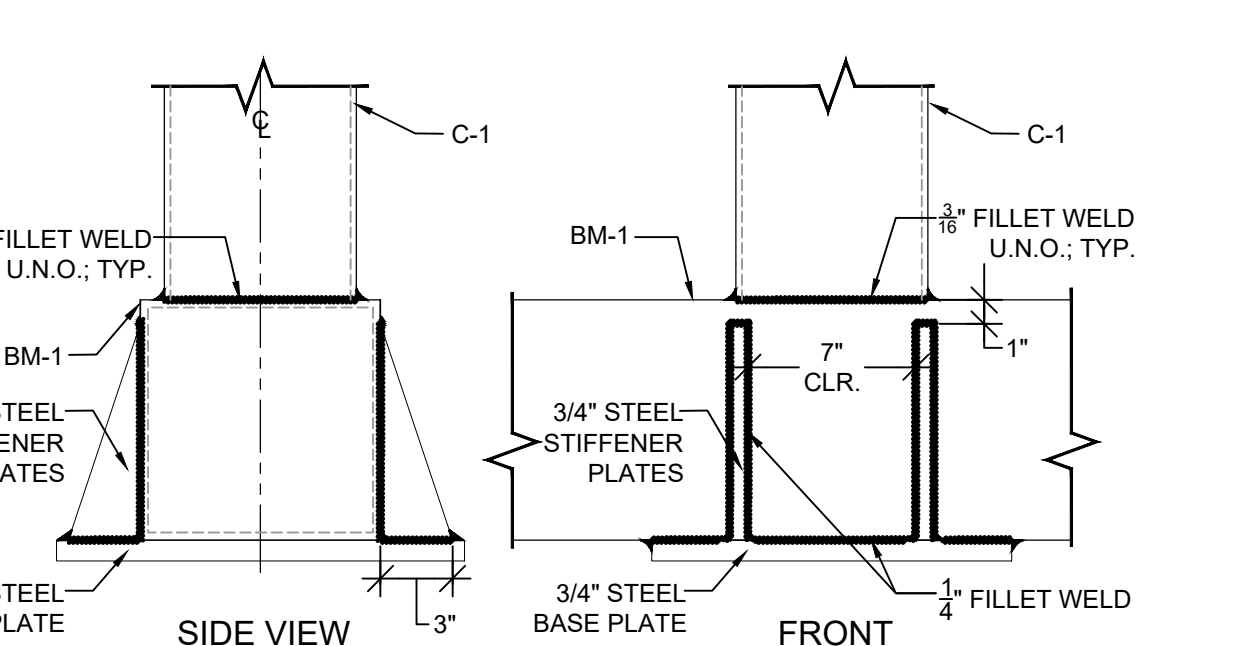
STRINGERS TO FLOOR BEAM CONNECTION DETAIL
SCALE: 1 1/2" = 1'-0"



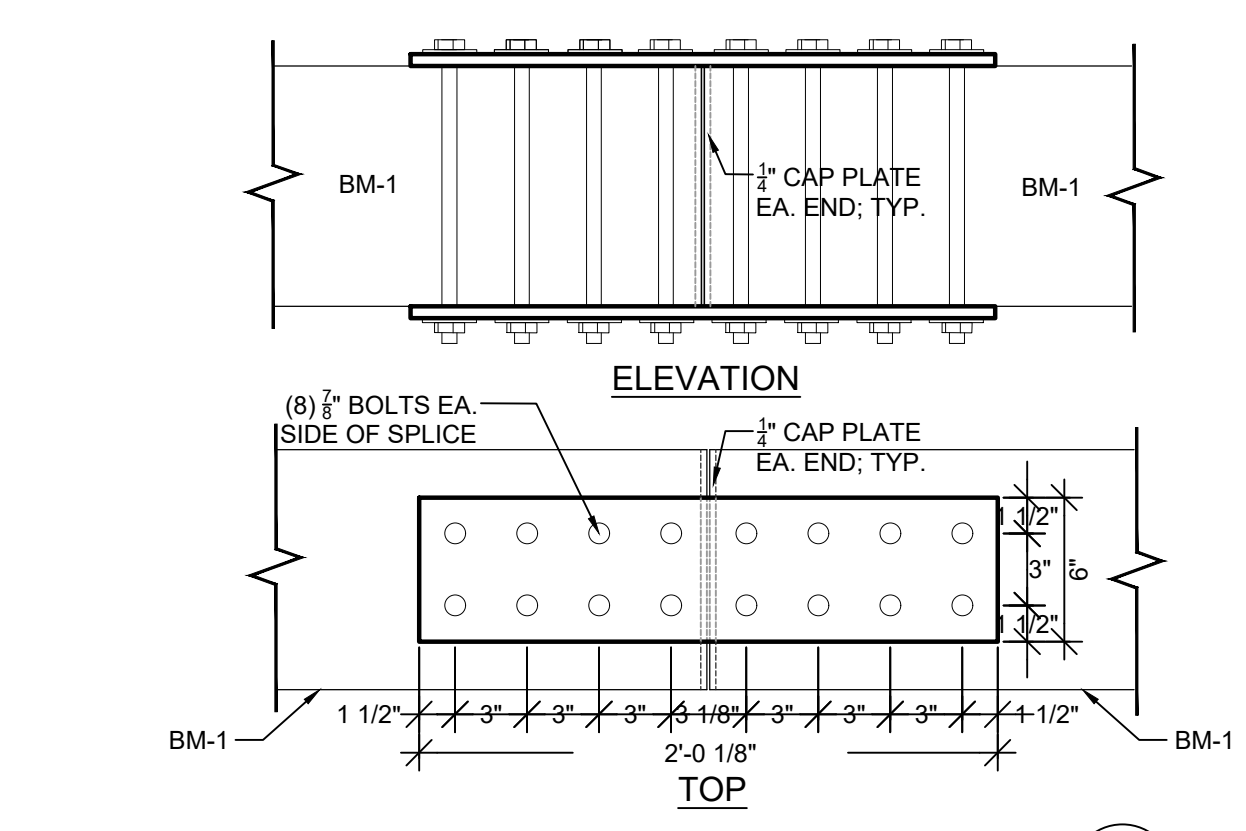
FLOOR BEAM TO COLUMN CONNECTION DETAIL
SCALE: 1 1/2" = 1'-0"



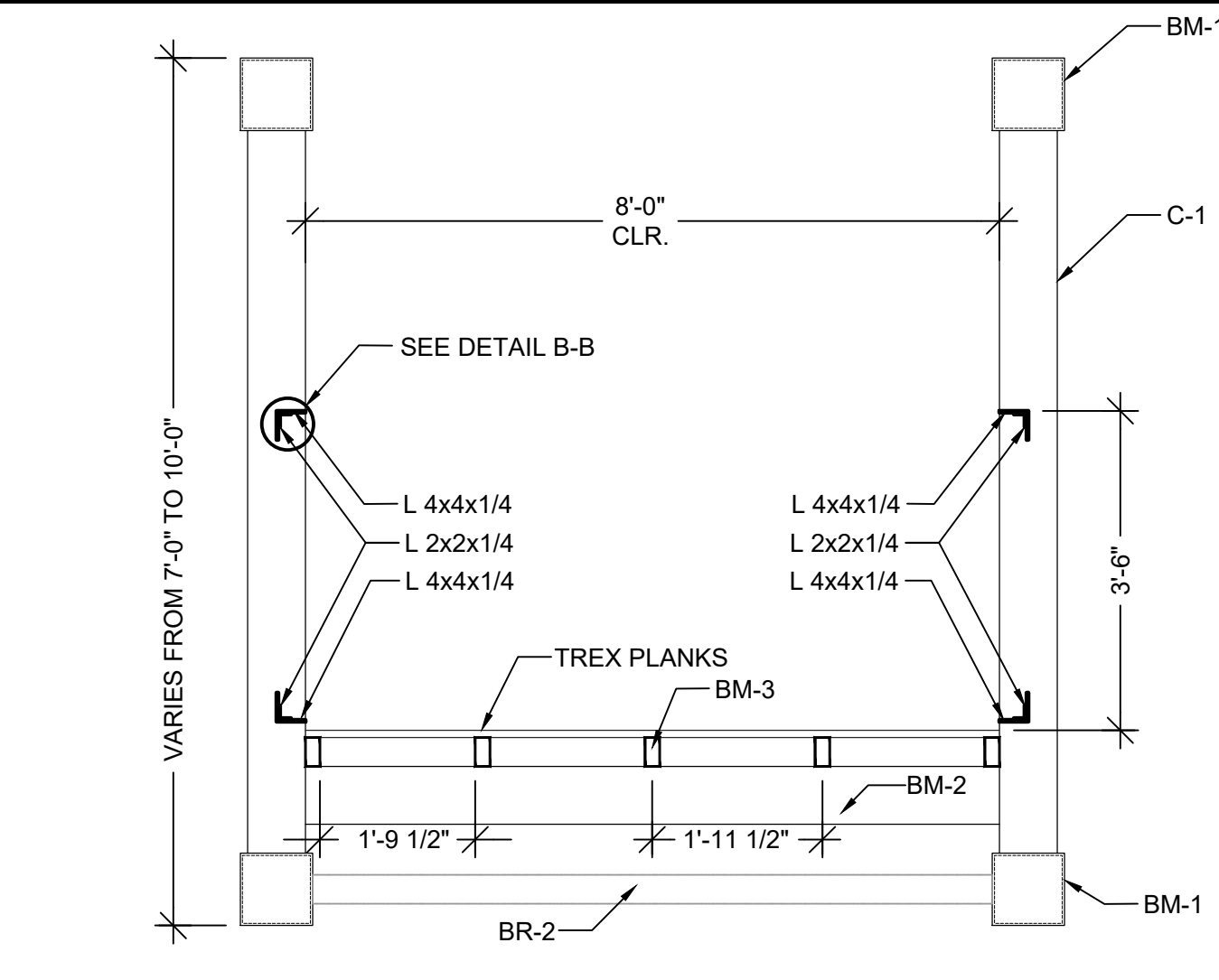
FLOOR BRACING AT BOTTOM BEAM CONNECTION DETAIL
SCALE: 1 1/2" = 1'-0"



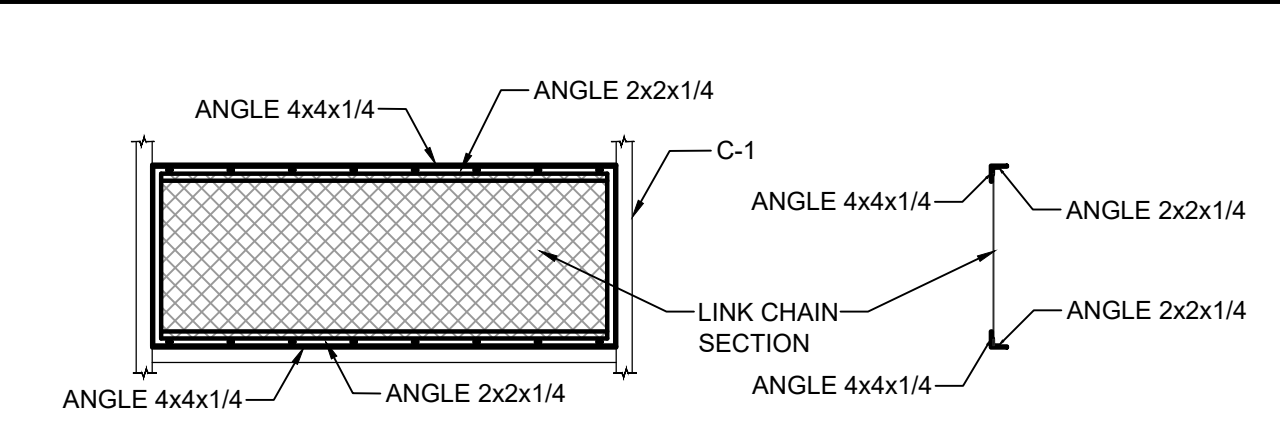
BRIDGE BEARING COLUMN CONNECTION DETAIL
SCALE: 1 1/2" = 1'-0"



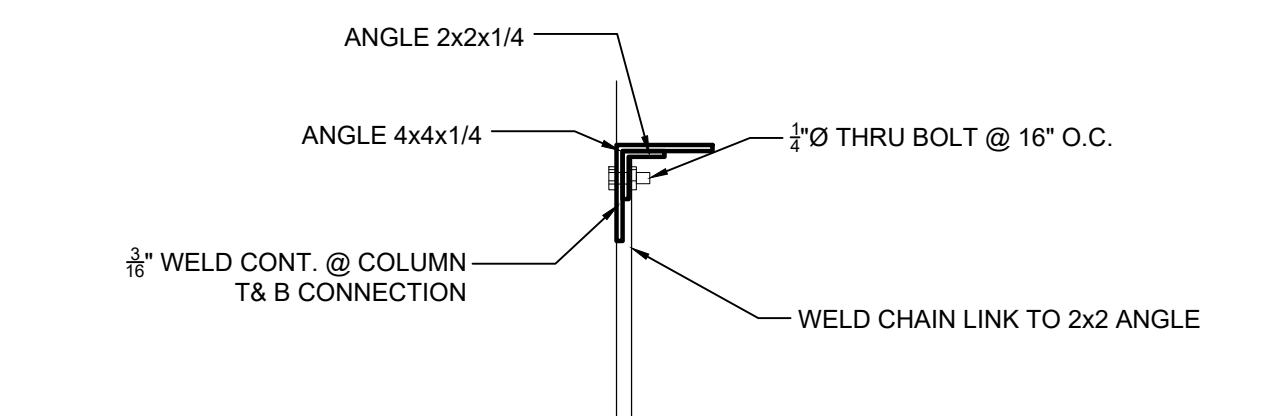
SECTION SPLICE CONNECTION DETAIL
SCALE: 1 1/2" = 1'-0"



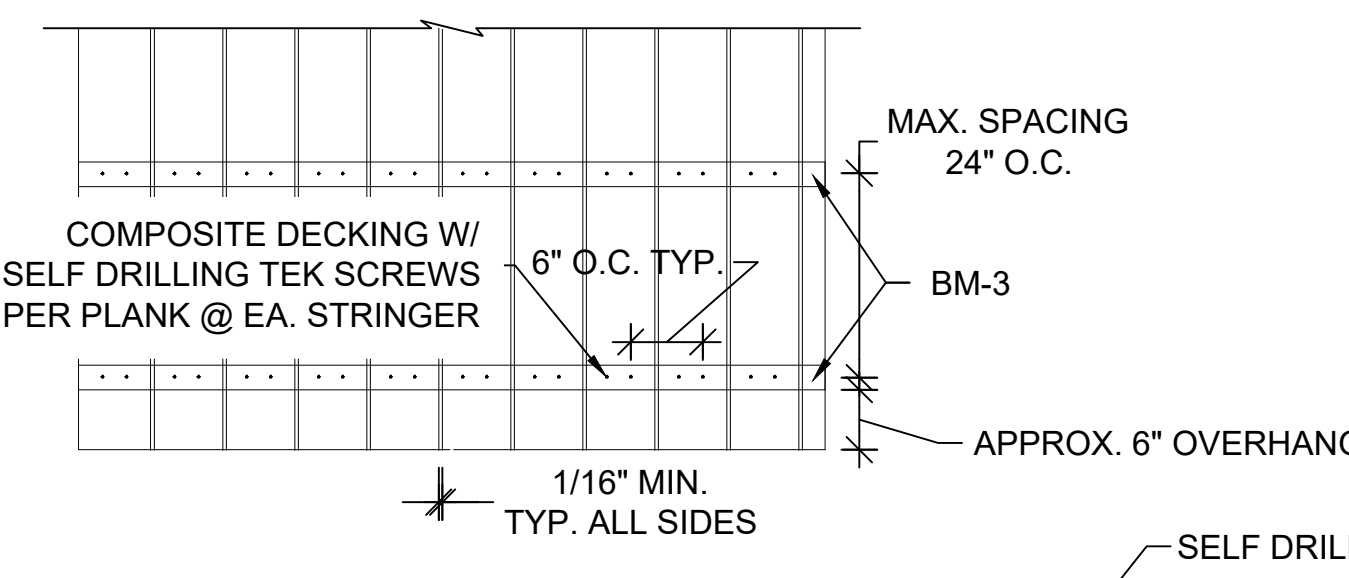
SECTION
SCALE: 1/2" = 1'-0"



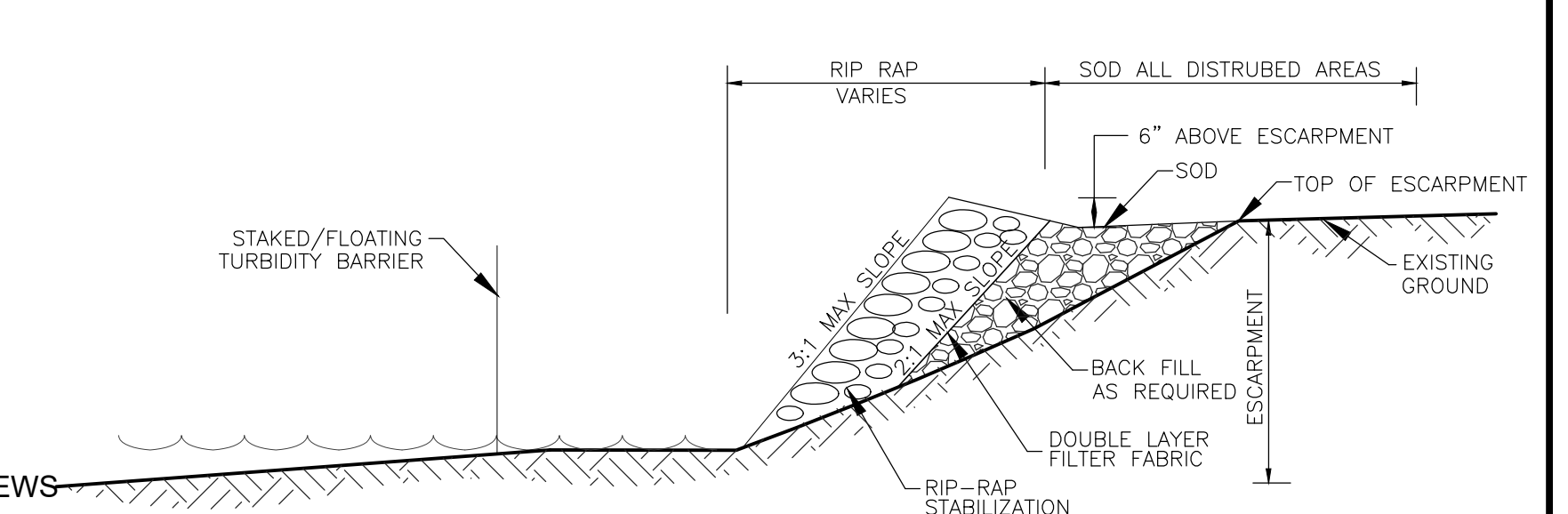
HANDRAIL SECTION
SCALE: 1/4" = 1'-0"



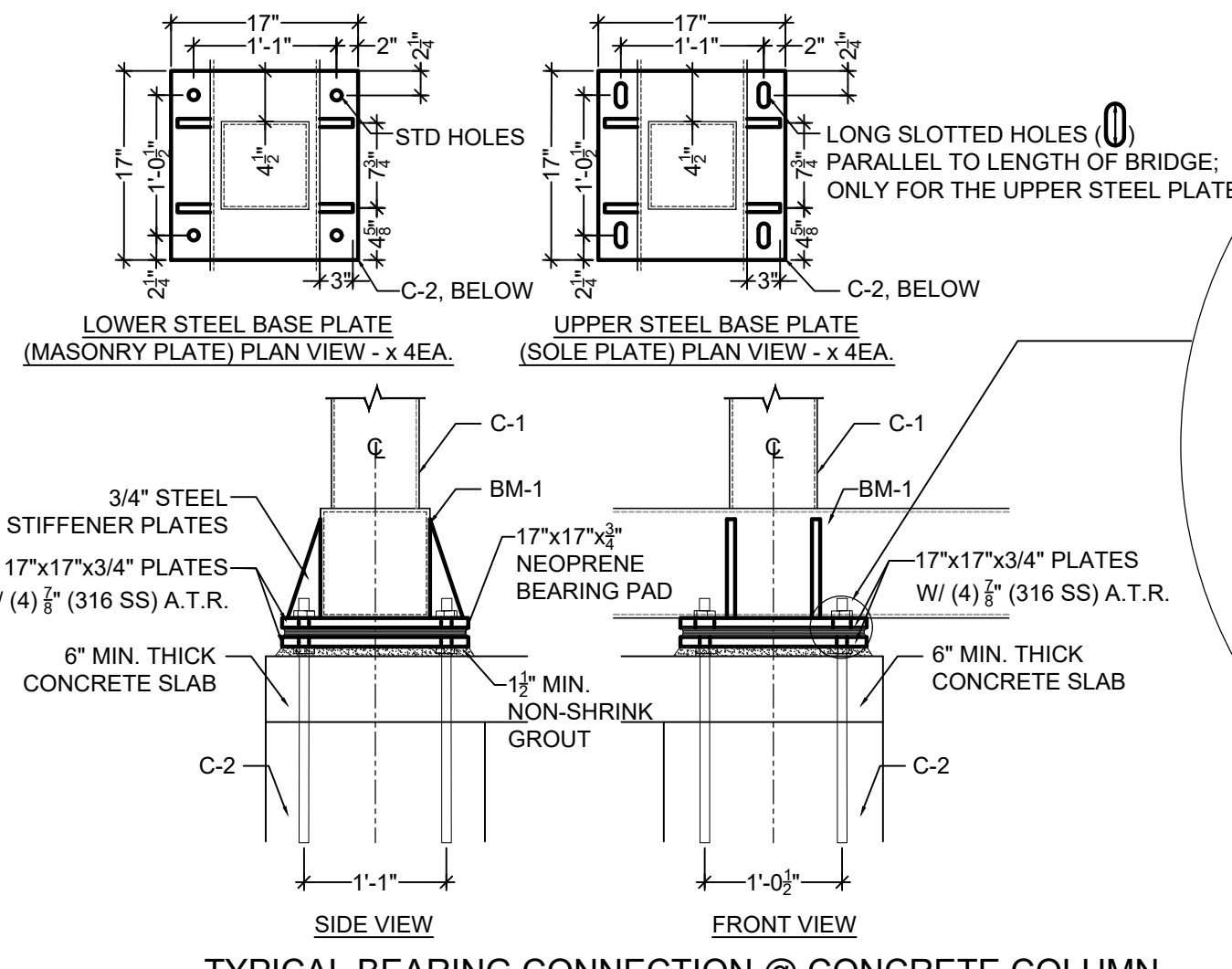
HANDRAIL DETAIL B-B
SCALE: 1 1/2" = 1'-0"



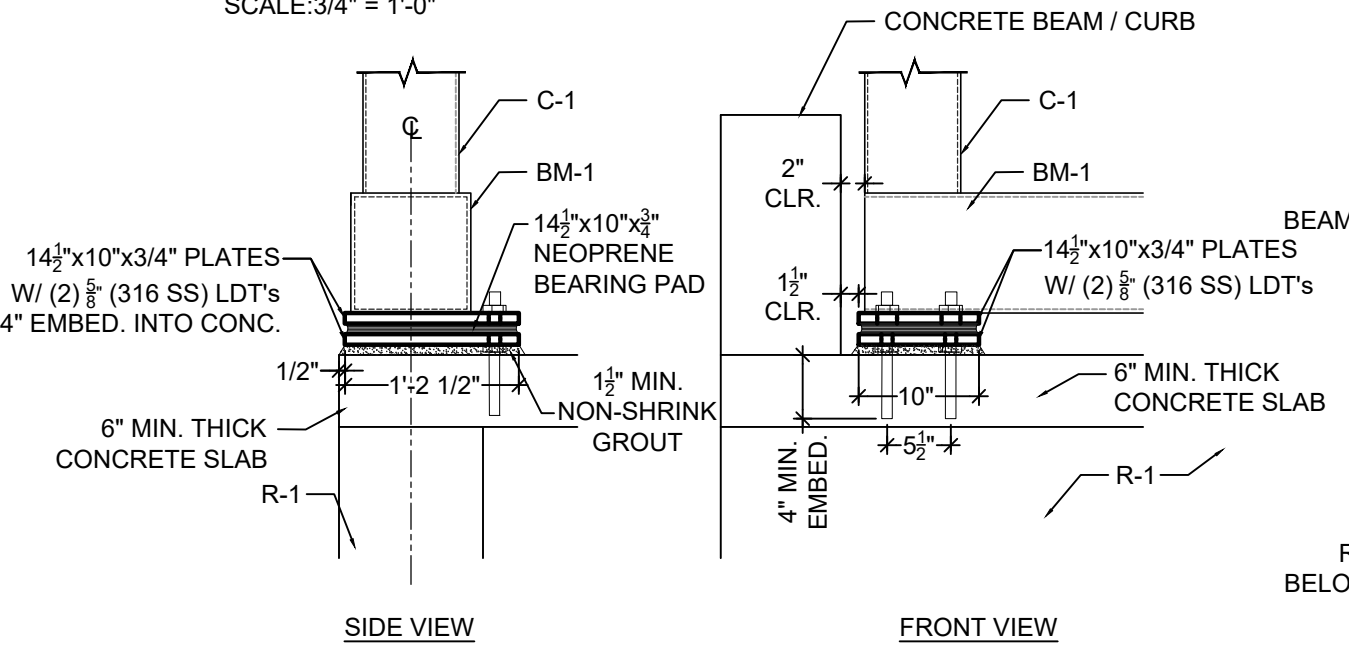
COMPOSITE DECKING DETAILS
SCALE: 3/4" = 1'-0"



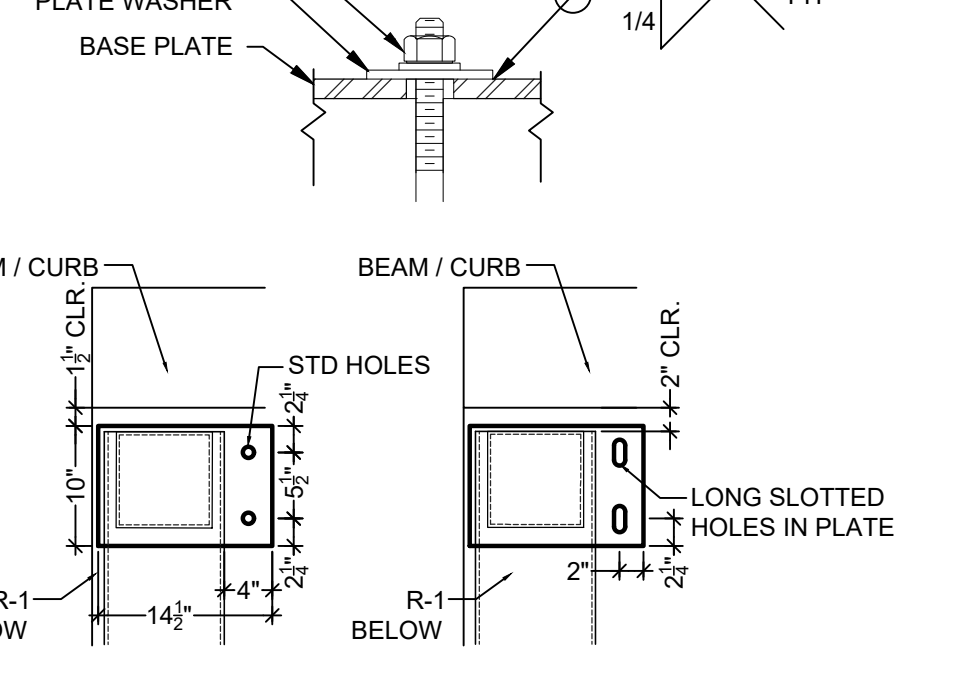
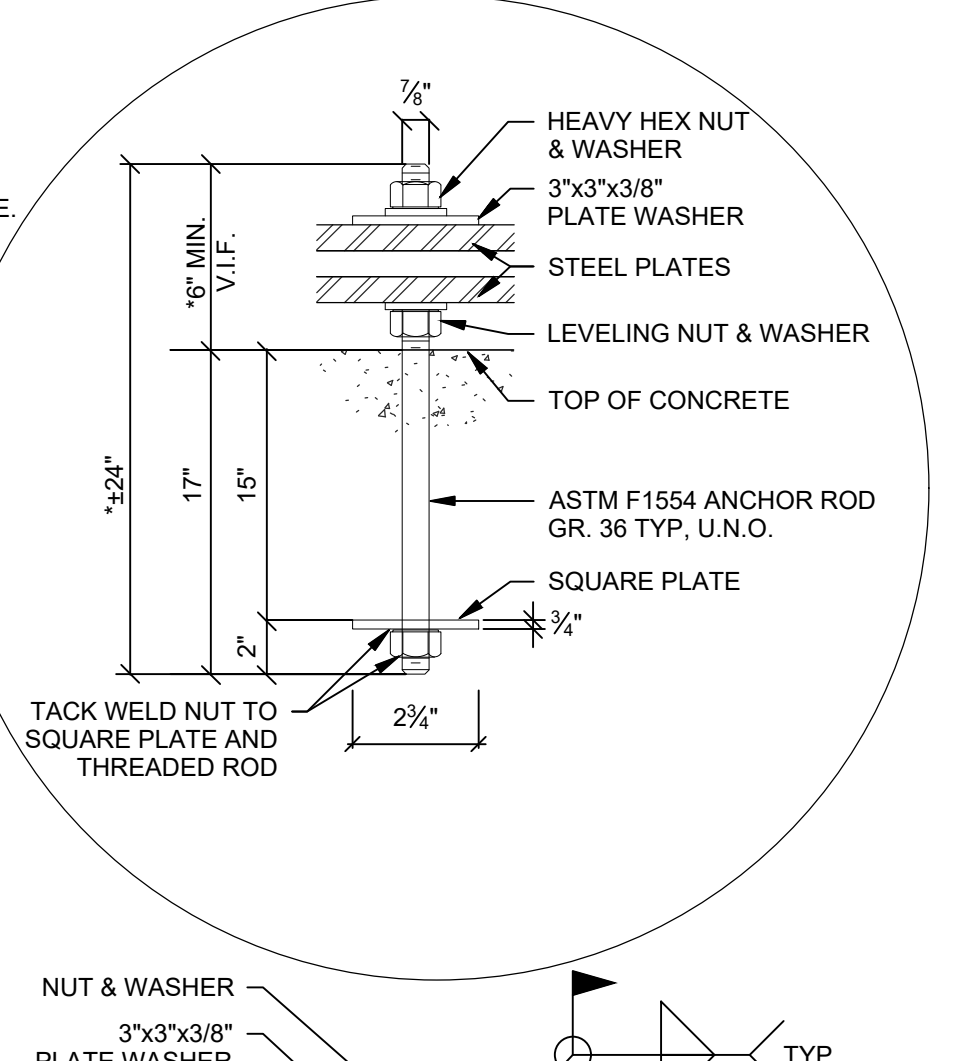
- RIP-RAP RETAINING WALL INSTALLATION**
1. INSTALL EROSION CONTROL FACILITIES, AND CONSTRUCTION FENCE
 2. REMOVE ANY PEPPER TREES, OTHER EXOTICS, AND MISCELLANEOUS DEBRIS (BROKEN CONCRETE, REBAR, TRASH, ETC.)
 3. APPLY FILTER FABRIC AS DETAILED
 4. INSTALL FABRIFORM FILTERPOINT PER MANUFACTURER RECOMMENDATIONS
 5. ALLOW TO SETTLE FOR 48 HOURS
 6. BACK FILL VOIDED AREA
 7. GRADE AS DETAILED
 8. SOD ALL DISTURBED AREAS
 9. SITE CLEAN UP
 10. REMOVE CONSTRUCTION FENCE AND EROSION CONTROL FACILITIES ONLY AFTER FINAL INSPECTION BY ENGINEER.



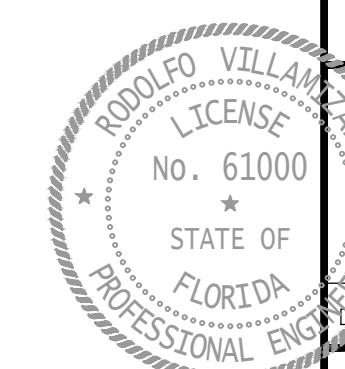
TYPICAL BEARING CONNECTION @ CONCRETE COLUMN
SCALE: 3/4" = 1'-0"



TYPICAL BEARING CONNECTION @ ENDS OF BRIDGE
SCALE: 3/4" = 1'-0"



LOWER STEEL BASE PLATE (MASONRY PLATE) PLAN VIEW x 4 EA.
UPPER STEEL BASE PLATE (SOLE PLATE) PLAN VIEW x 4 EA.
*COORD. LEFT / RIGHT SIDE ORIENTATION



This item has been digitally signed and sealed by Rodolfo Villamizar, P.E. on 6/20/2023
Printed copies of this document are not considered signed and sealed and the signature must be verified on any electronic copies.

NO.	REVISIONS	DATE
1		
2		
3		
4		
5		
6		
7		

JOB NO.	DESIGNED	DRAWN	CHECKED	DATE ISSUED	SCALE
19-0077	AC	AER & JT	RV	06-20-2023	AS NOTED

1835 - 20TH STREET
VERO BEACH, FL 32960
PH. (772) 569-0035
FX. (772) 778-3617
MELBOURNE, FL - PH (321) 253-1510
FT. PIERCE, FL - PH (772) 468-9055

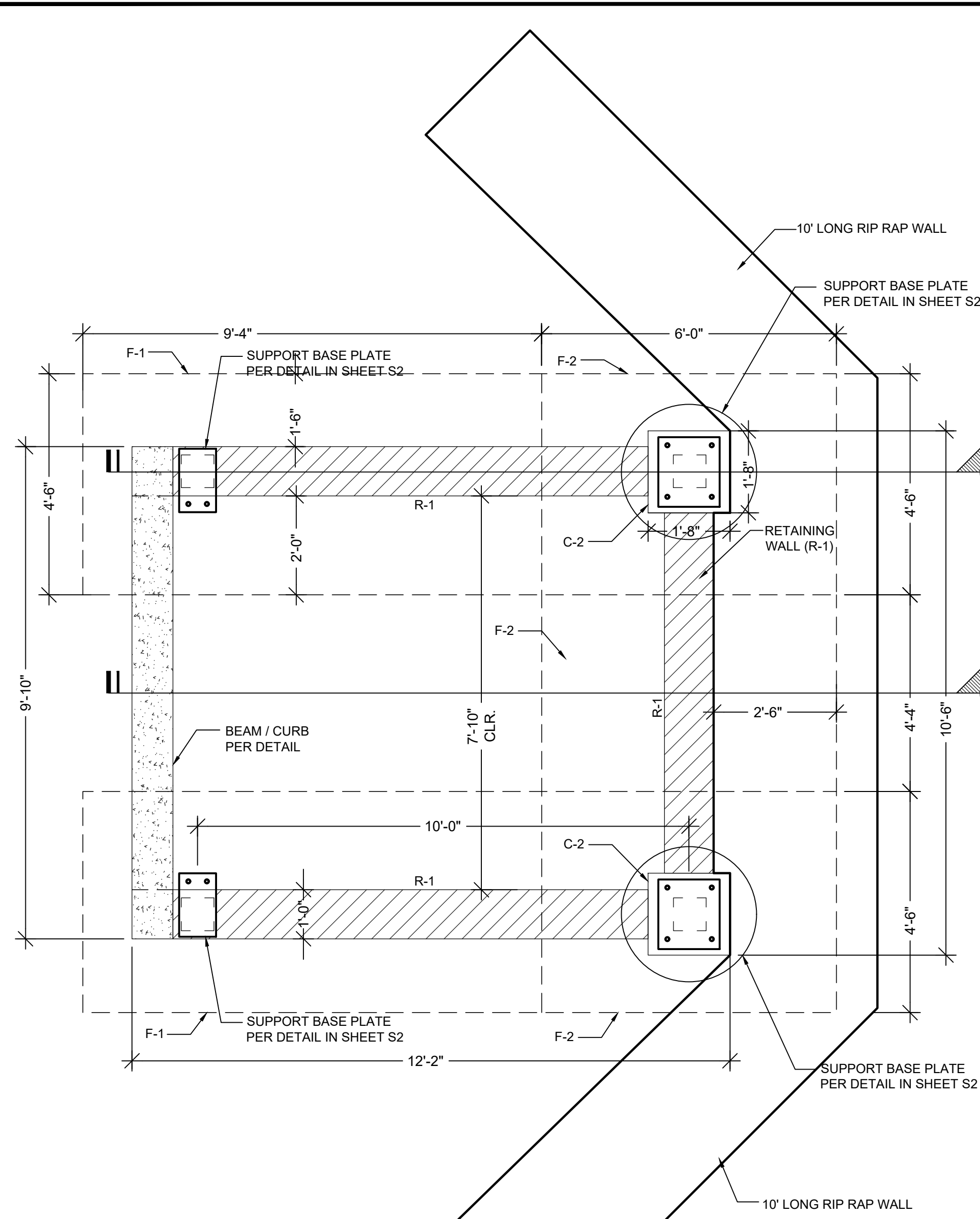
MBV ENGINEERING, INC.
MOA BOWLES VILLAMIZAR & ASSOCIATES
CONSULTING ENGINEERING CA #3728

FOUNDATION PLAN, SECTIONS, AND STRUCTURAL DETAILS

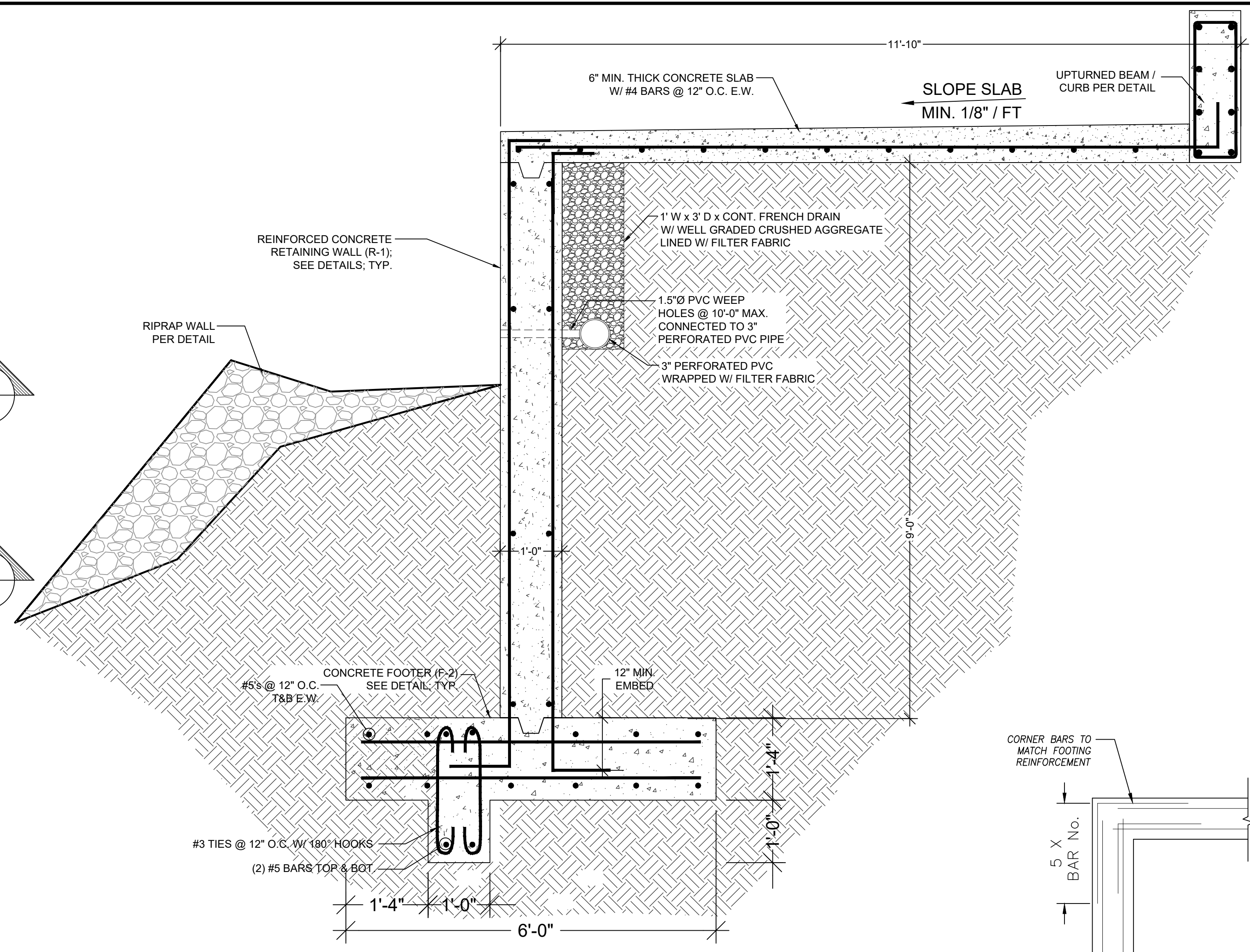
JACKIE ROBINSON TRAINING COMPLEX WALKING TRAIL
CITY OF VERO BEACH
FLORIDA

DATE: 06-20-2023

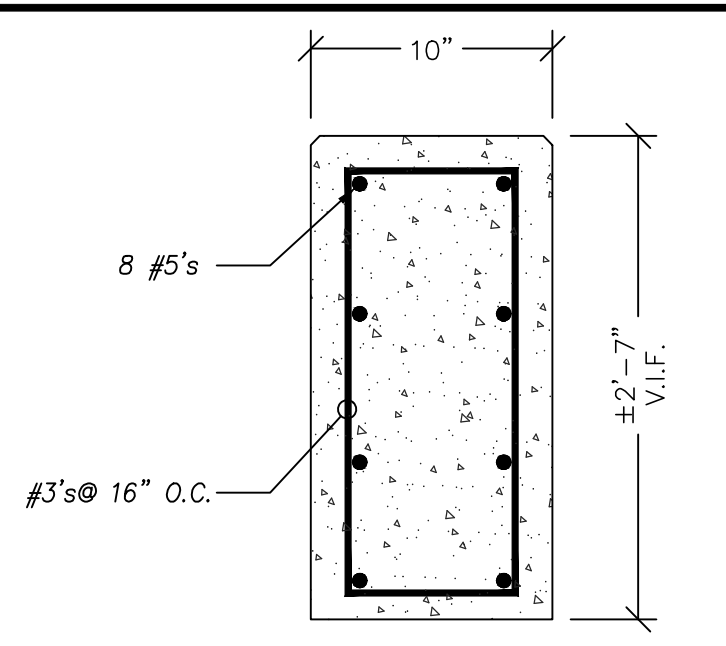
SHEET
S2
OF 4
19-0077



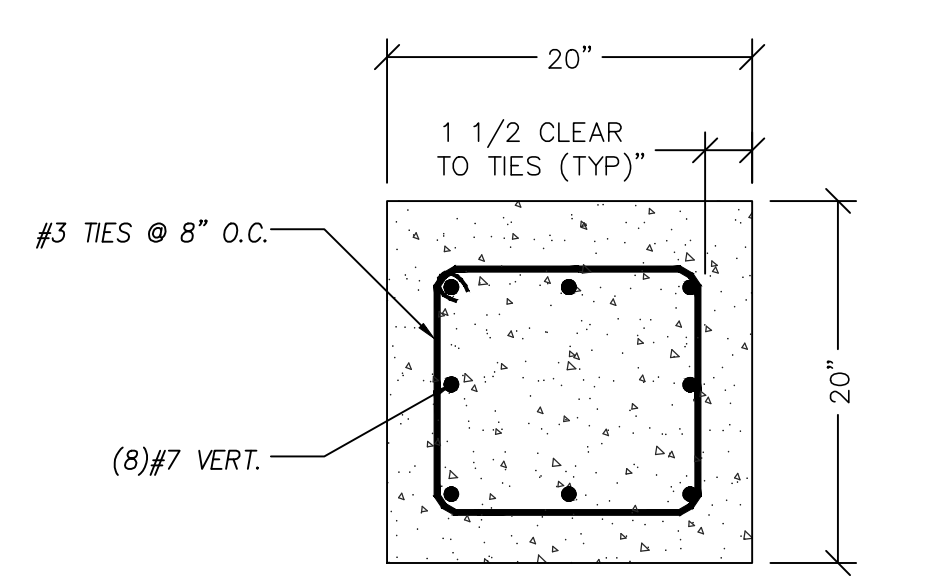
FOUNDATION PLAN
SCALE: 1/2" = 1'-0"



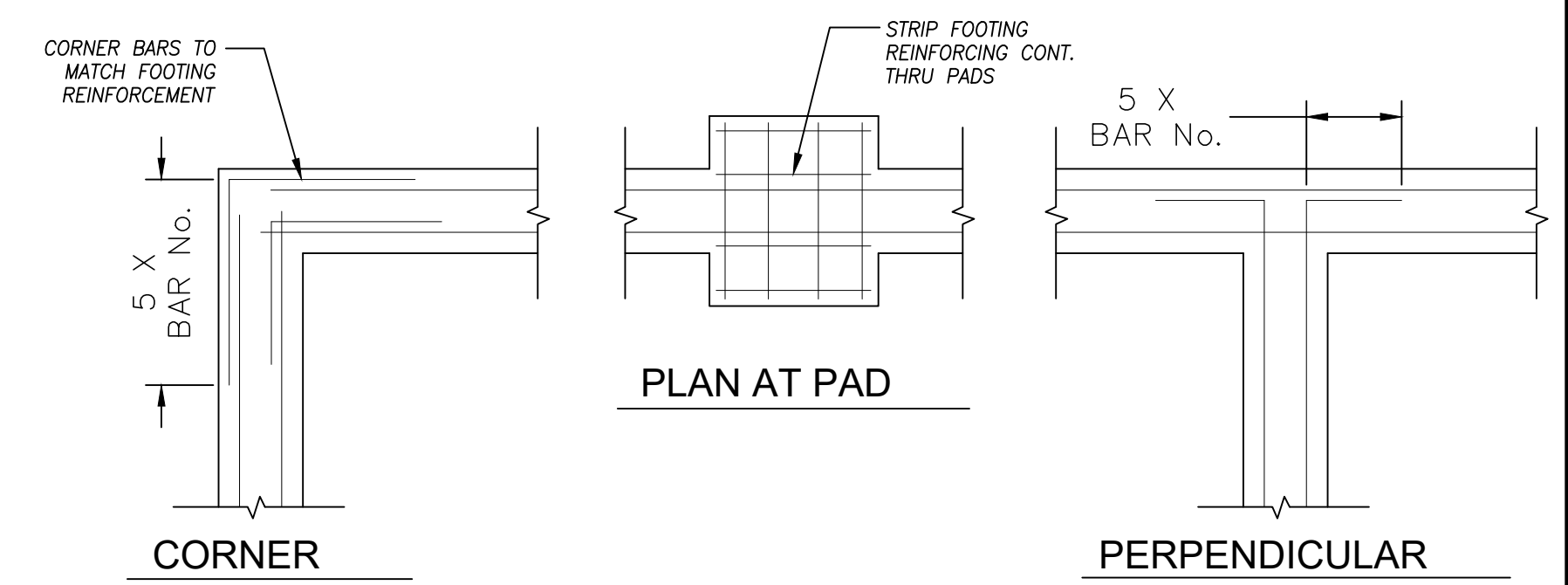
RETAINING WALL SECTION WITH WEEP HOLES
SCALE: 1/2" = 1'-0"



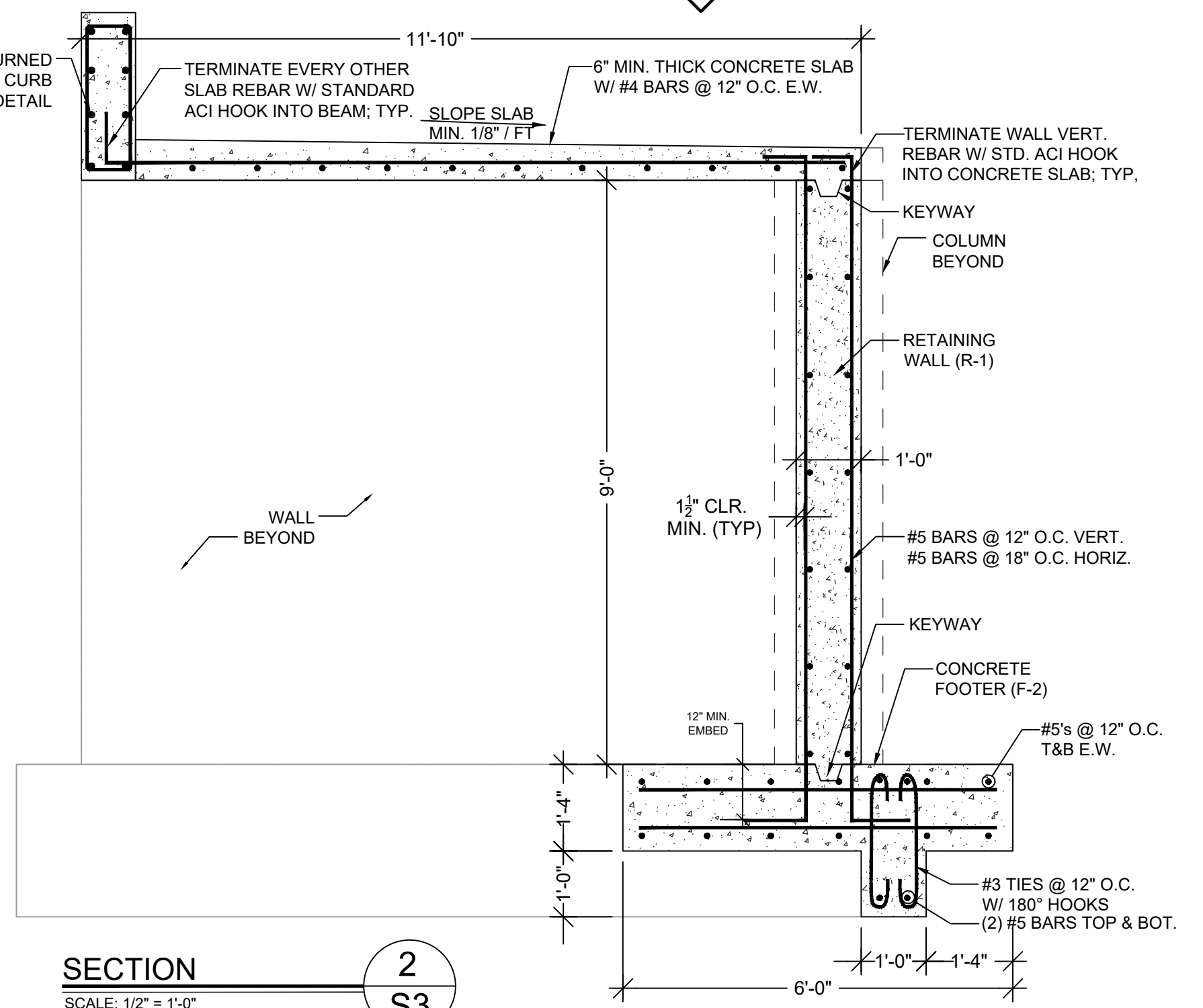
CONCRETE CURB DETAIL
SCALE: N.T.S.



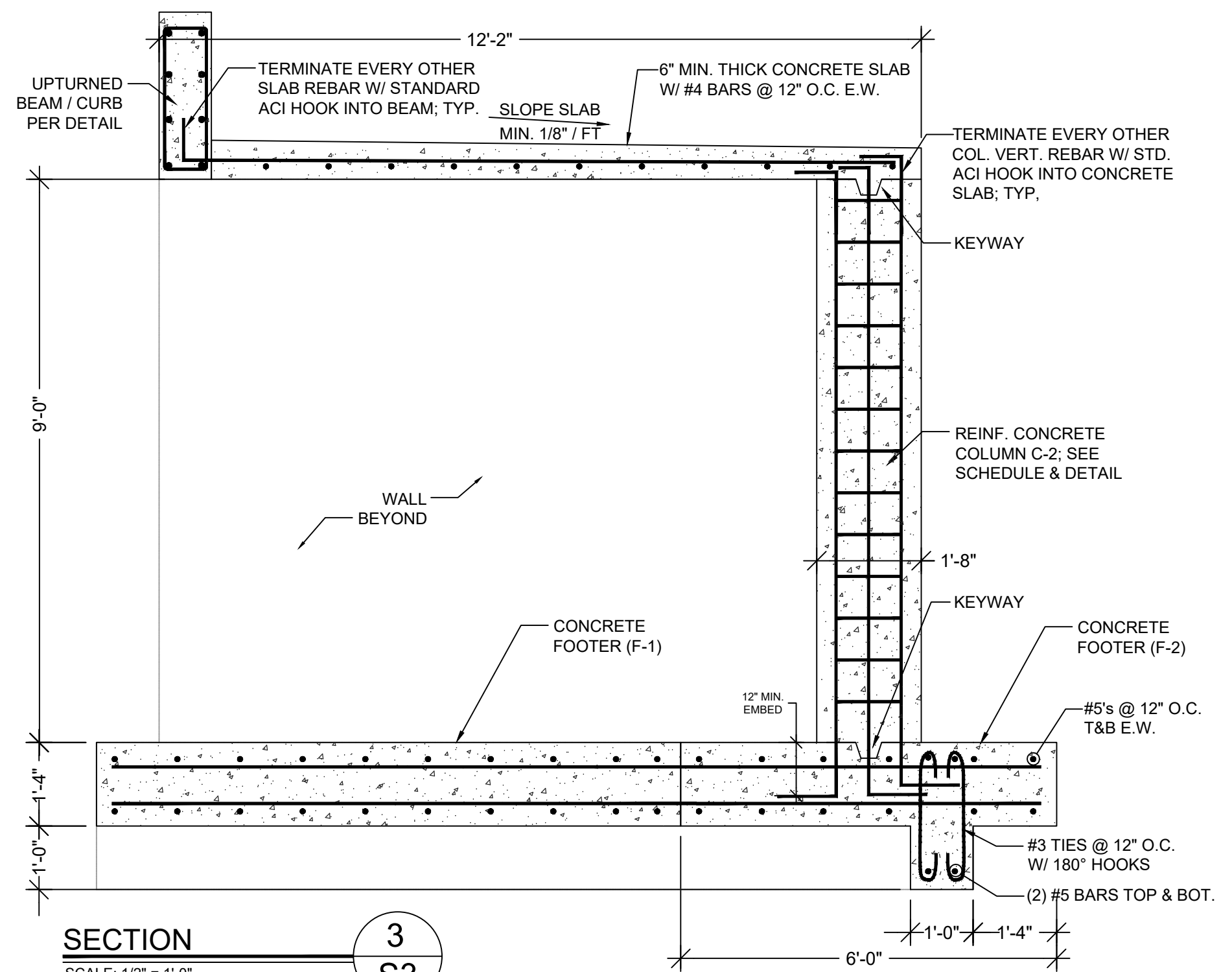
CONCRETE COLUMN DETAIL (C-2)
SCALE: N.T.S.



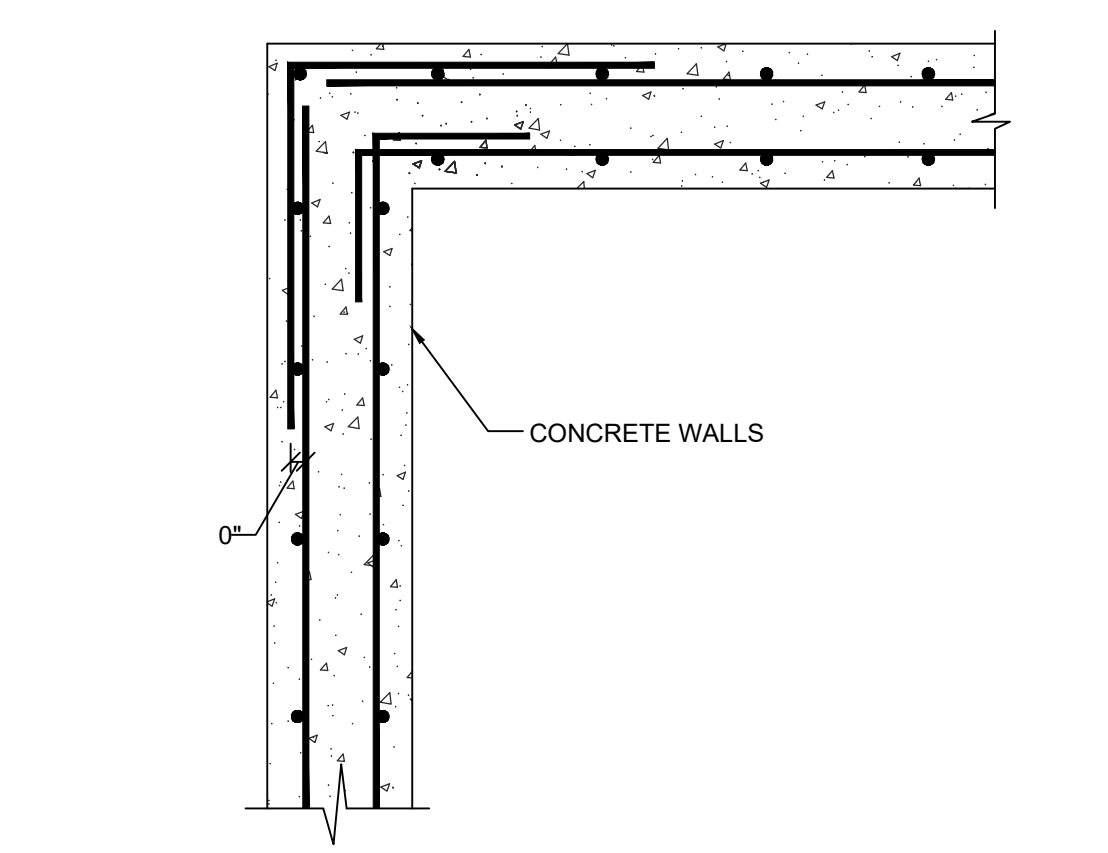
TYPICAL FOOTING INTERSECTION DETAIL
SCALE: 3/4" = 1'-0"



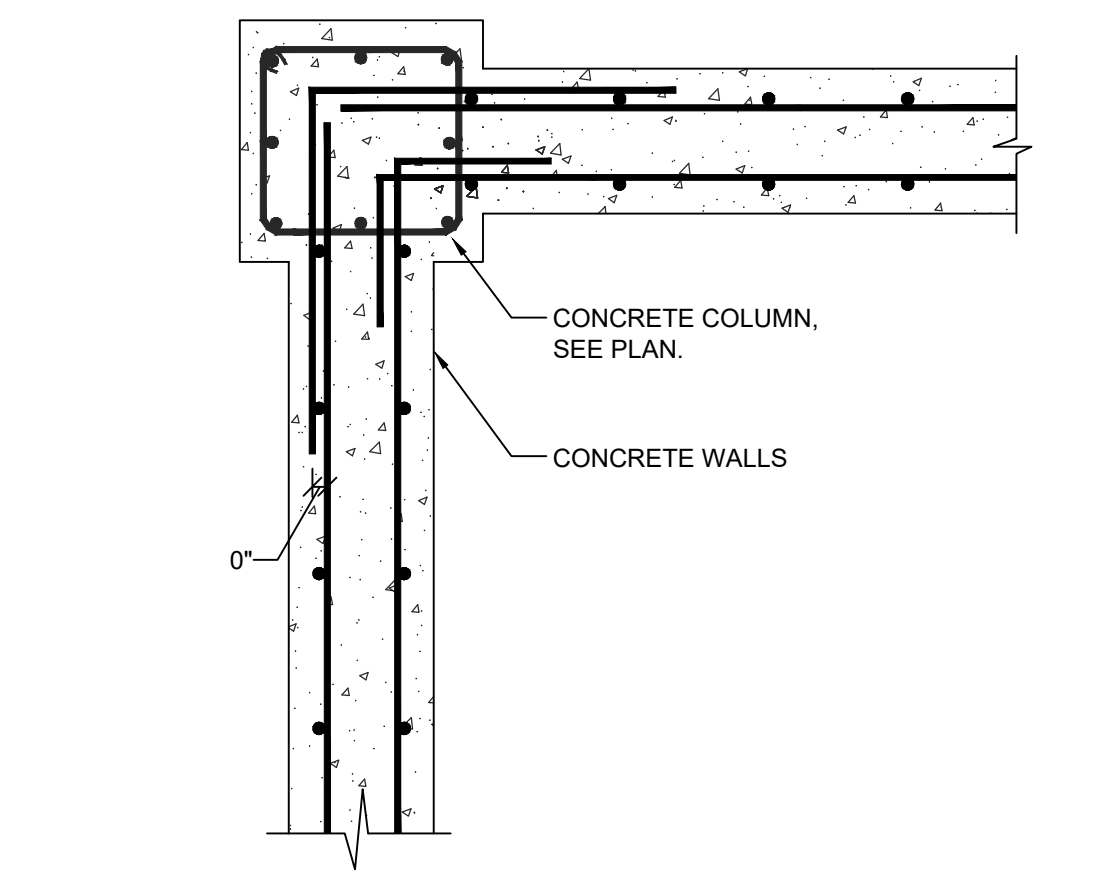
SECTION 2 S3
SCALE: 1/2" = 1'-0"



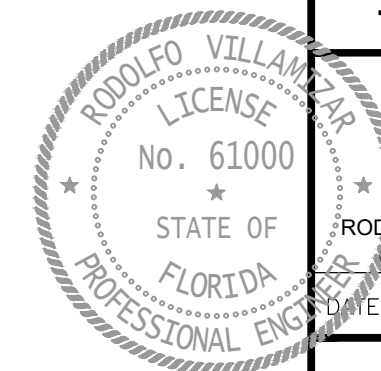
SECTION 3 S3
SCALE: 1/2" = 1'-0"



TYPICAL WALL INTERSECTION AT CORNER DETAIL
SCALE: 3/4" = 1'-0"



TYPICAL WALL INTERSECTION AT CORNER DETAIL
SCALE: N.T.S.



This item has been digitally signed and sealed by Rodolfo Villamizar, P.E. on 6/20/2023
Printed copies of this document are not considered signed and sealed and the signature must be verified on any electronic copies.

NO.	DATE	REVISIONS
1		
2		
3		
4		
5		
6		
7		

JOB NO.	DESIGNED	AC	DATE	CHECKED	RV	DATE ISSUED	SCALE
19-0077	AC						
	AC						
	AER & JT						

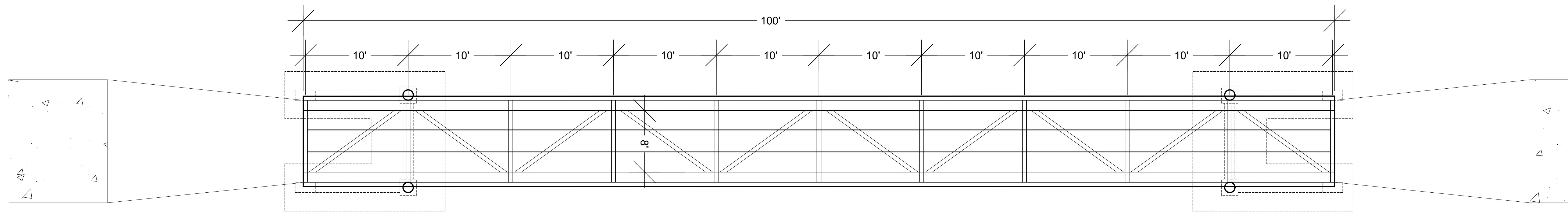
1835 - 20TH STREET
VERO BEACH, FL 32960
PH. (772) 569-0035
FX. (772) 778-3617
MELBOURNE, FL - PH (321) 253-1510
FT. PIERCE, FL - PH (772) 466-9058
CONSULTING ENGINEERING CA #5728

**FOUNDATION PLAN, SECTIONS,
AND STRUCTURAL DETAILS**

JACKIE ROBINSON TRAINING
COMPLEX WALKING TRAIL
CITY OF VERO BEACH
FLORIDA

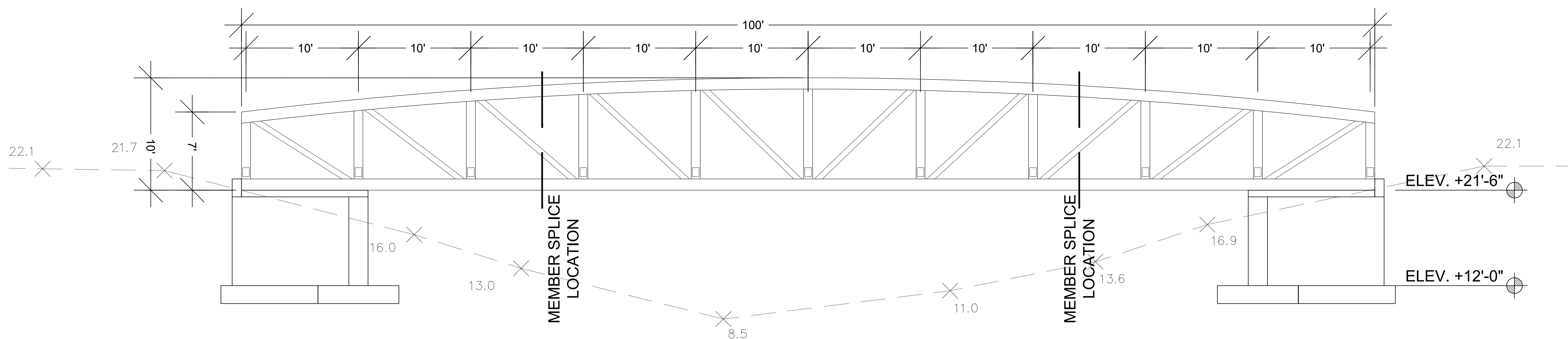
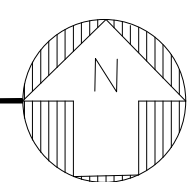
RODOLFO VILLAMIZAR
LICENSE No. 61000
STATE OF FLORIDA
PROFESSIONAL ENGINEER
P.E. #61000
DATE: 06-20-2023

SHEET
S3
OF 4
19-0077



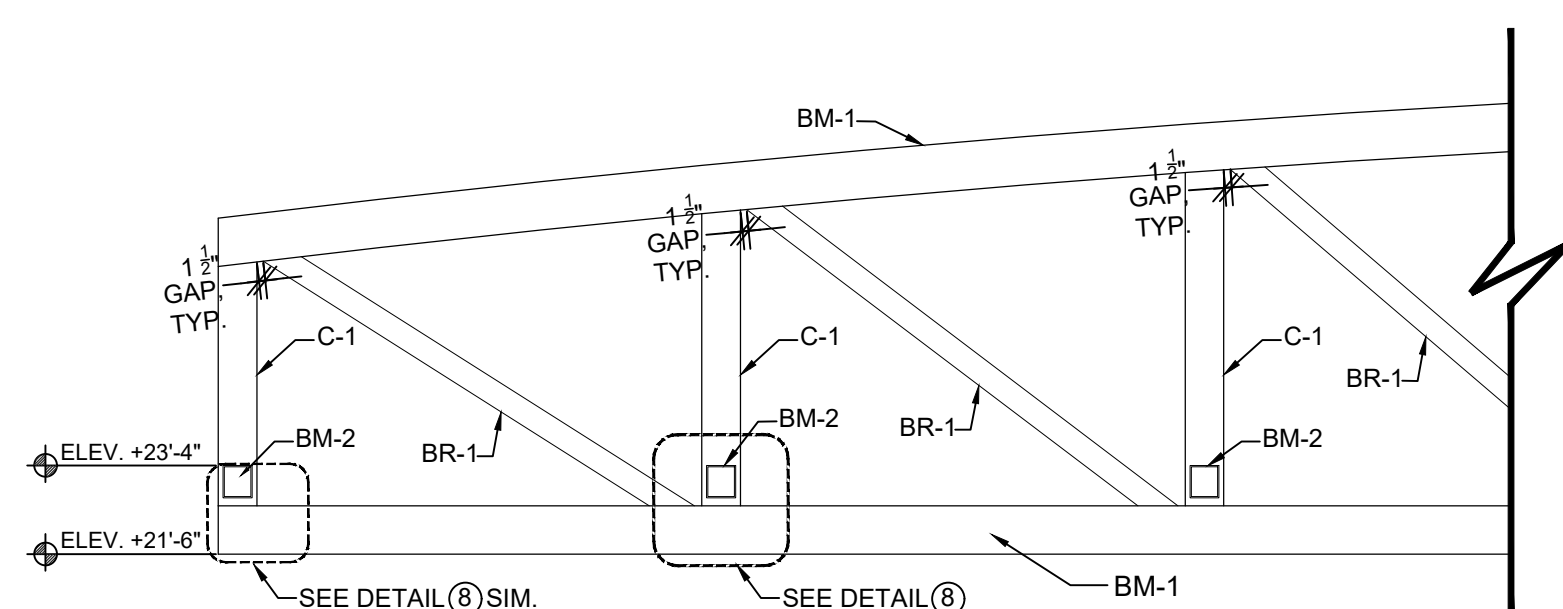
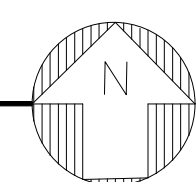
PLAN VIEW

SCALE: 1" = 5'



PROFILE

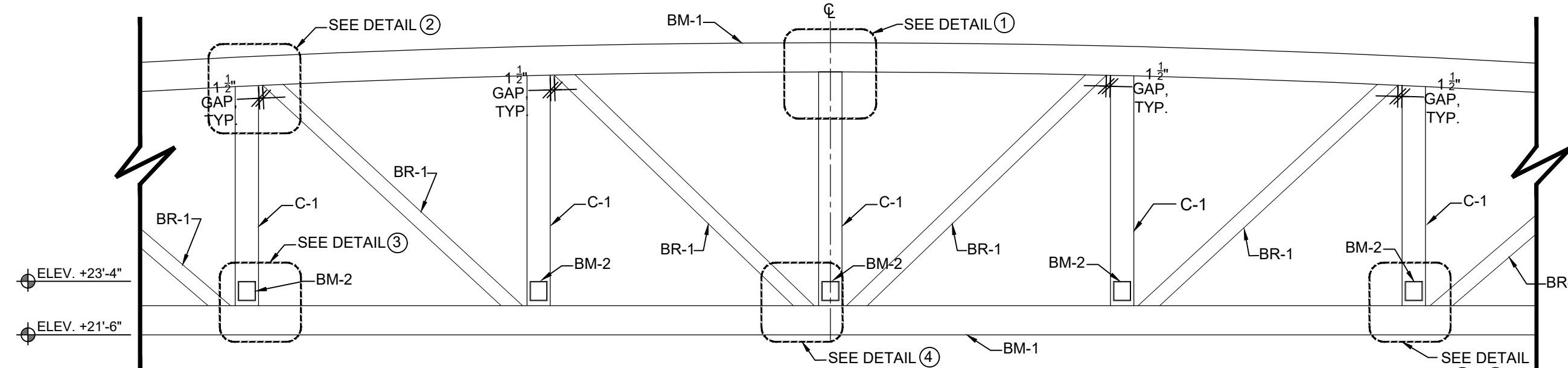
SCALE: 1" = 5'



WEST END SECTION

SCALE: 1/4" = 1'-0"

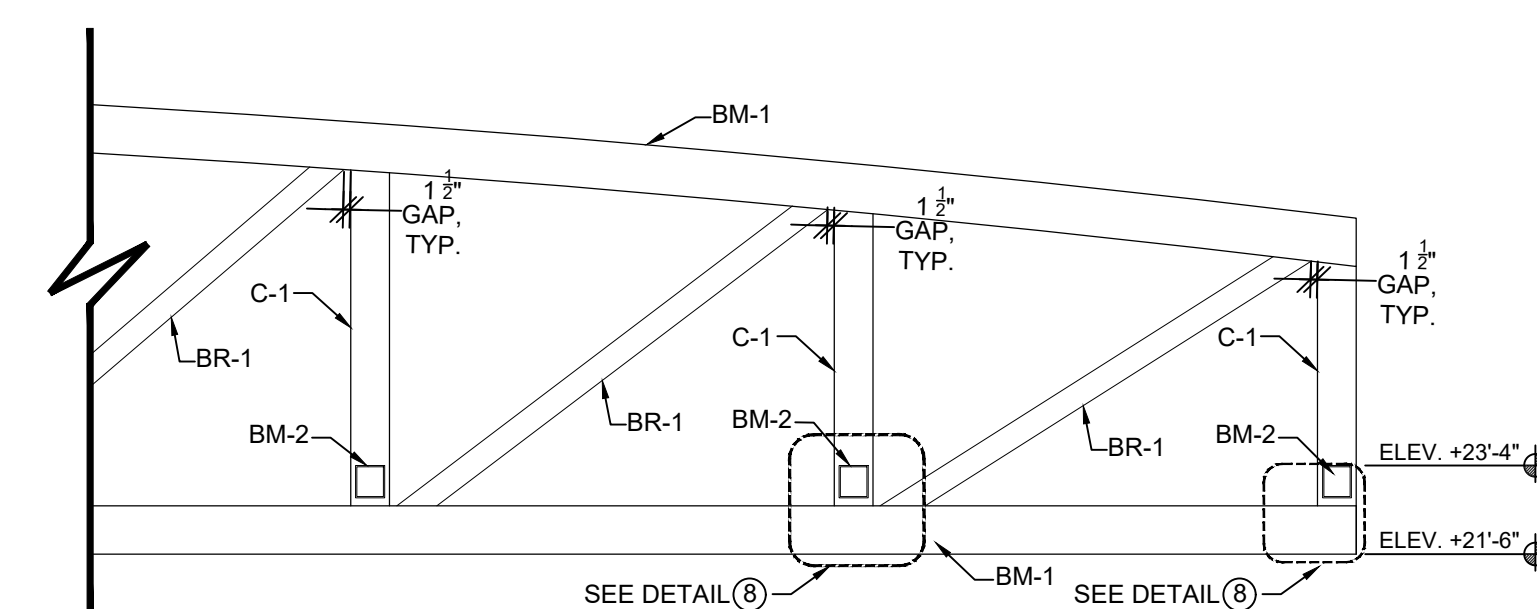
NOTE: SEE NOTES THIS SHEET.



MIDDLE SECTION

SCALE: 1/4" = 1'-0"

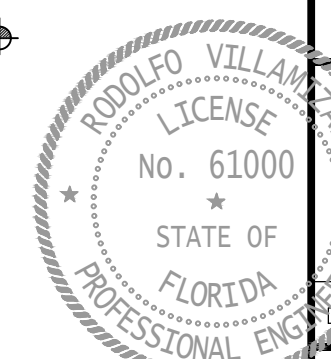
- NOTES:
1. SEE SHEET S2 FOR CLOSE-UP CONNECTION DETAILS.
 2. PROVIDE WEEPHOLES TO ALLOW WATER DRAINAGE AT UNDERSIDE OF ALL MEMBERS; TYP.
 3. FOR BRIDGE MEMBER SPLICE CONNECTIONS, SEE SPLICE CONNECTION DETAIL ⑨ IN SHEET S2.
 4. FOR BRIDGE BEARING CONNECTIONS TO CONCRETE STRUCTURE, SEE COLUMN AND WALL BASE PLATE DETAILS IN S2.



EAST END SECTION

SCALE: 1/4" = 1'-0"

NOTE: SEE NOTES THIS SHEET.



This item has been digitally signed and sealed by Rodolfo Villamizar, P.E. on 6/20/2023. Printed copies of this document are not considered signed and sealed and the signature must be verified on any electronic copies.

NO.	REVISIONS	DATE
1		
2		
3		
4		
5		
6		
7		

JOB NO.	DESIGNED	DRAWN	DATE	CHECKED	DATE ISSUED	SCALE
19-0077	AC	AER & JT	OCT 2019	RV	06-20-2023	

1835 - 20TH STREET
 VERO BEACH, FL 32960
 PH. (772) 569-0035
 FX. (772) 778-3617

MELBOURNE, FL - PH (321) 253-1510
 FT. PIERCE, FL - PH (772) 486-9058

MBV
ENGINEERING, INC.
 MOYA BOWLES VILLAMIZAR & ASSOCIATES
 CONSULTING ENGINEERING CA #8728

PLAN VIEW AND PROFILE

JACKIE ROBINSON TRAINING
 COMPLEX WALKING TRAIL
 CITY OF VERO BEACH
 FLORIDA

RODOLFO VILLAMIZAR
 LICENSE No. 61000
 STATE OF FLORIDA
 PROFESSIONAL ENGINEER
 DATE: 06-20-2023

SHEET
S4
 OF 4
 19-0077

19-0077