



MEMBERS OF THE AMERICAN INSTITUTE OF ARCHITECTS

COPYRIGHT 2015 ALL RIGHTS RESERVED
PRINTED OR ELECTRONIC DRAWINGS AND
DOCUMENTATION MAY NOT BE REPRODUCED
IN ANY FORM WITHOUT WRITTEN PERMISSION
FROM LS3P ASSOCIATES LTD.

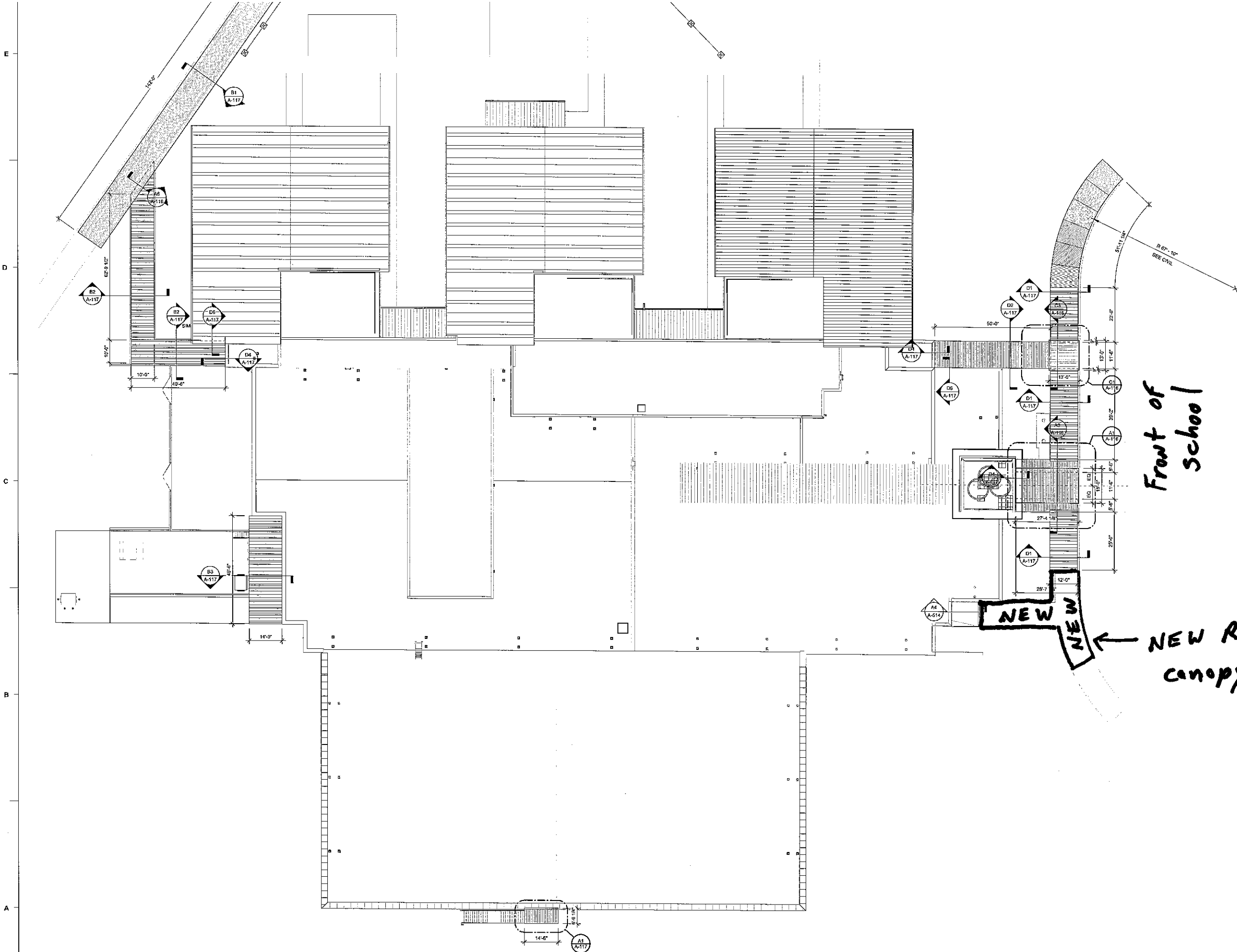
REVISIONS:

No.	Description	Date

PROJECT: 5201-151800
DATE: FEBRUARY 04, 2016

OVERALL
COVERED
WALKWAY PLANS

A-115



Front of
School

NEW
NEW
← NEW Requested
canopy

A1 OVERALL COVERED WALKWAY PLAN
1/8" = 1'-0"



MEMBERS OF THE AMERICAN INSTITUTE OF ARCHITECTS

COPYRIGHT 2015 ALL RIGHTS RESERVED
PRINTED OR ELECTRONIC DRAWINGS AND
DOCUMENTATION MAY NOT BE REPRODUCED
IN ANY FORM WITHOUT WRITTEN PERMISSION
FROM LS3P ASSOCIATES LTD.

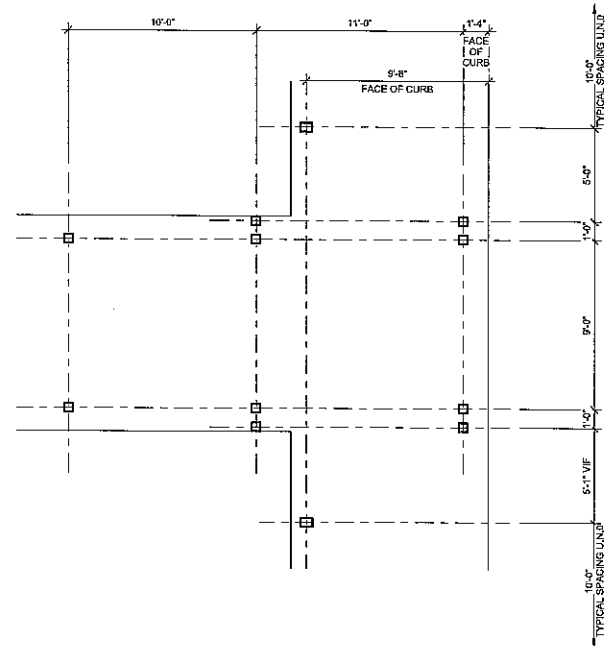
REVISIONS:

No.	Description	Date

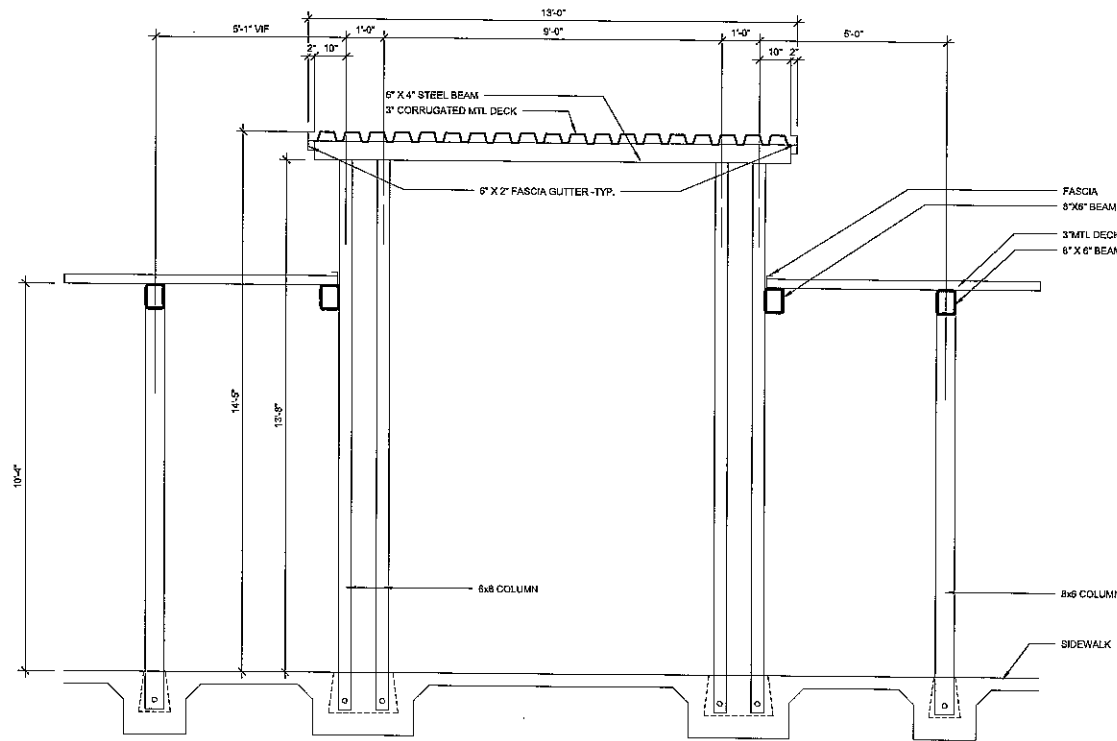
PROJECT: 9201-151600
DATE: FEBRUARY 04, 2016

ENLARGED
COVERED WALKWAY PLANS,
SECTIONS &
DETAILS

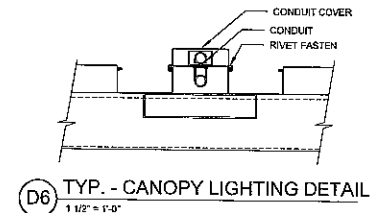
A-116



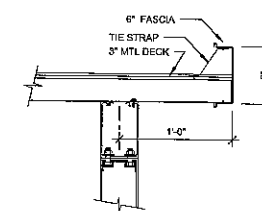
C1 ENLARGED PLAN - COVERED WALKWAY PLAN - INTERSECTION
1/4" = 1'-0"



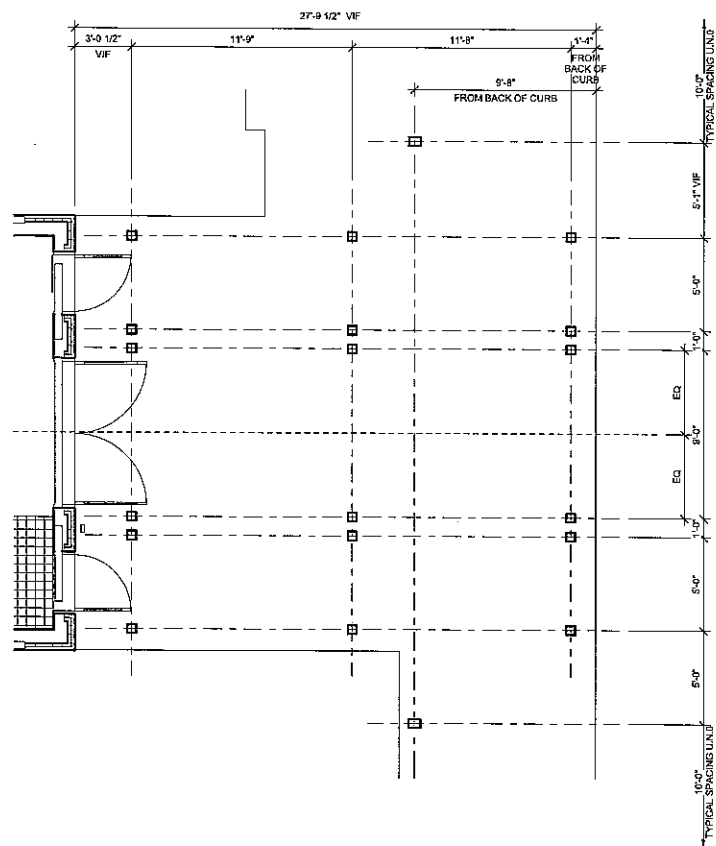
C3 CANOPY SECTION HIGH @ WALKWAY COVER AT SIDE ENTRY
1/2" = 1'-0"



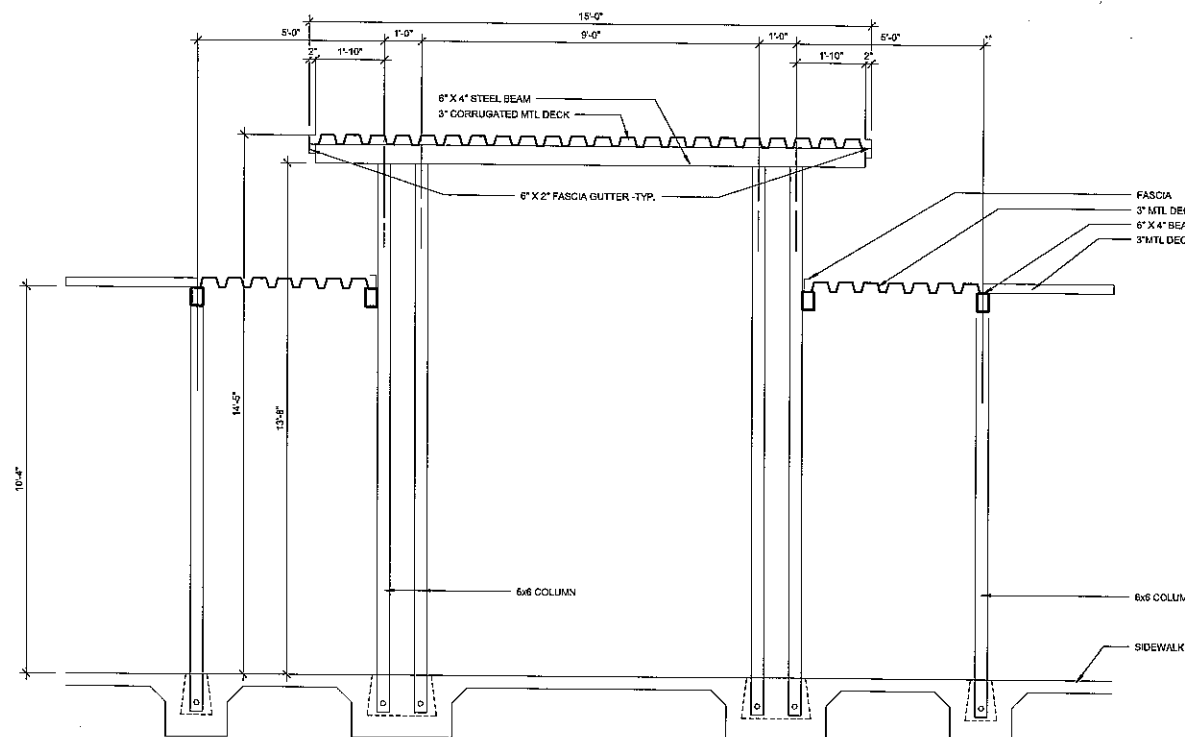
D6 TYP. - CANOPY LIGHTING DETAIL
1 1/2" = 1'-0"



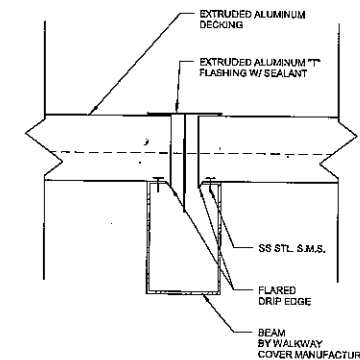
C6 TYP. - CANOPY EDGE
1 1/2" = 1'-0"



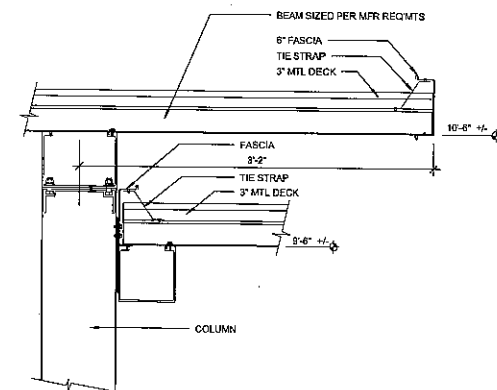
A1 ENLARGED PLAN - COVERED WALKWAY PLAN - MAIN ENTRY
1/4" = 1'-0"



A3 CANOPY SECTION HIGH @ WALKWAY COVER AT MAIN ENTRY
1/2" = 1'-0"

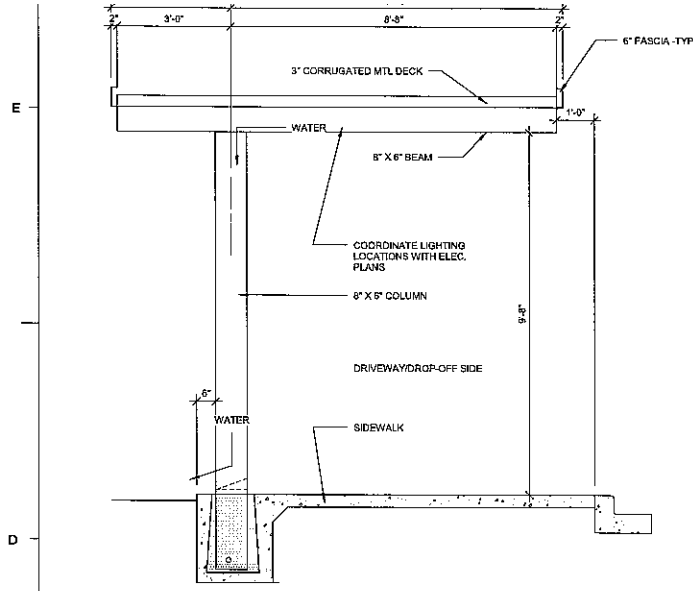


B6 TYPICAL SECTION THRU GUTTER BEAM
3" = 1'-0"

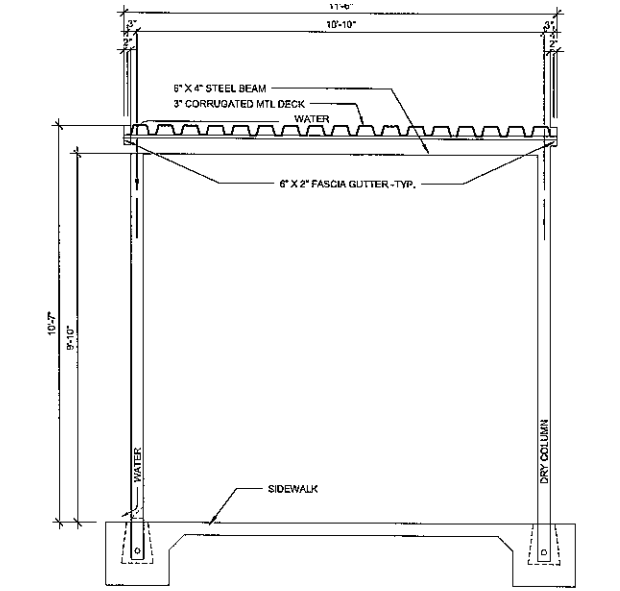


A6 CANOPY STEP W/ OVERHANG DETAIL AT BUS DROP-OFF
1 1/2" = 1'-0"

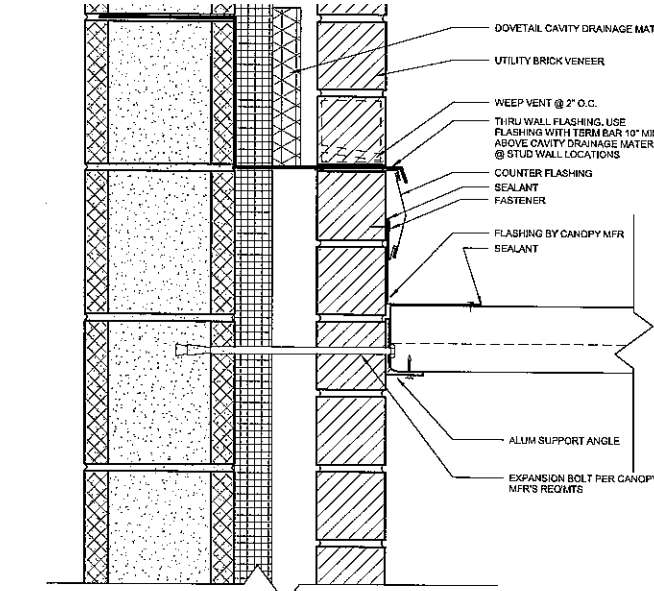
R:\EDU\010201-151600\F1 ME Middle School #55.0 Design\Bidding\Package\03_Construction Set\016-01-12 Arch_F1.MXD
 M:\016-01-12_Construction Set\Mod\1.rvt
 1/27/16 10:52 AM



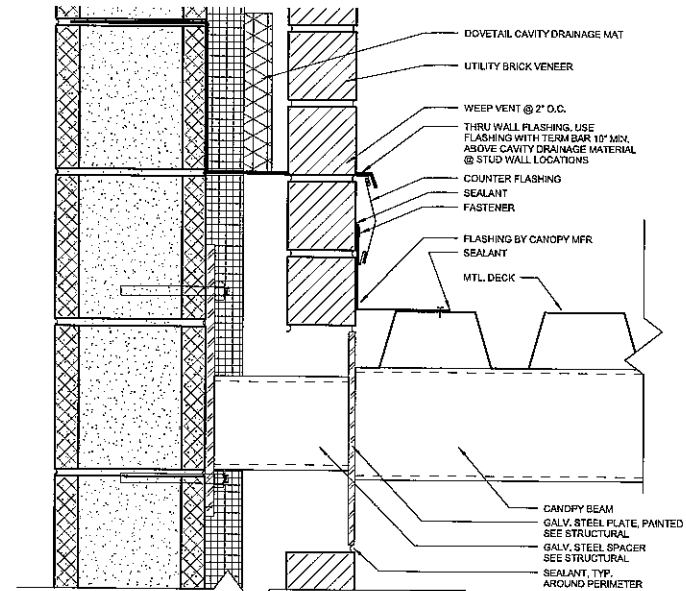
D1 TYP. CANTILEVERED CANOPY SECTION
1/2" = 1'-0"



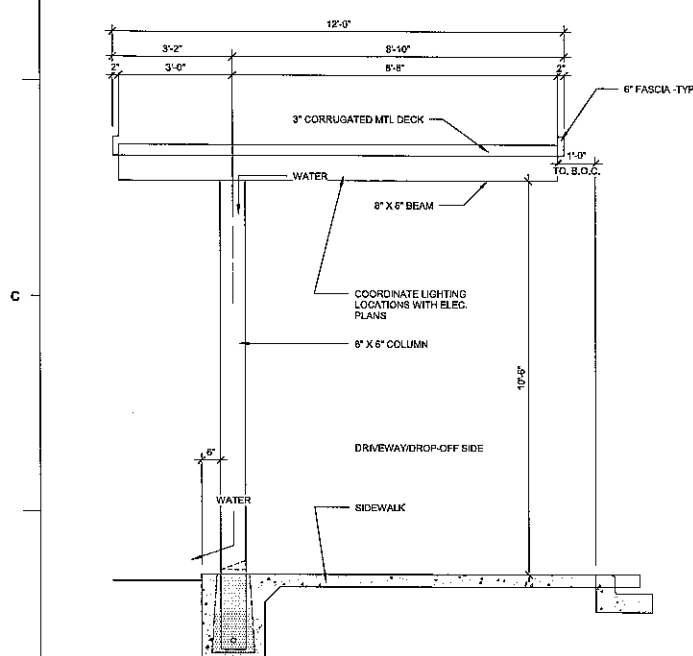
D2 TYP. - CANOPY SECTION @ WALKWAY COVER AT SIDE ENTRY
1/2" = 1'-0"



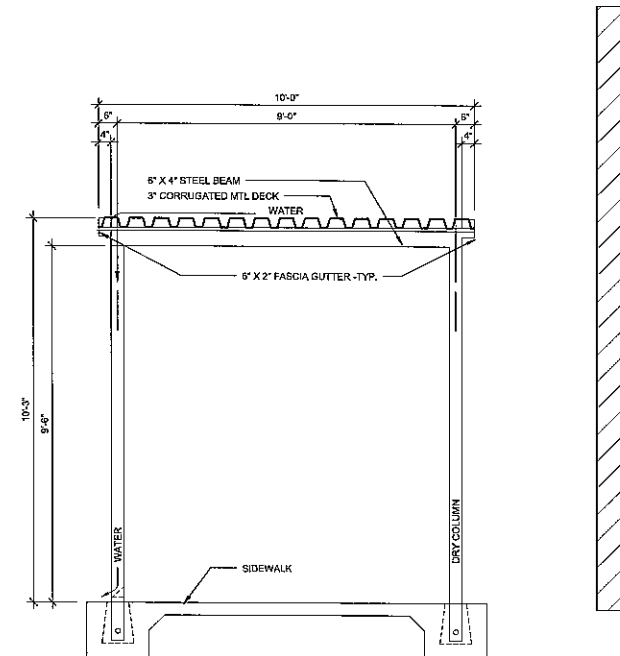
D4 TYPICAL END WALL MOUNT DETAIL @ CANOPY
3/8" = 1'-0"



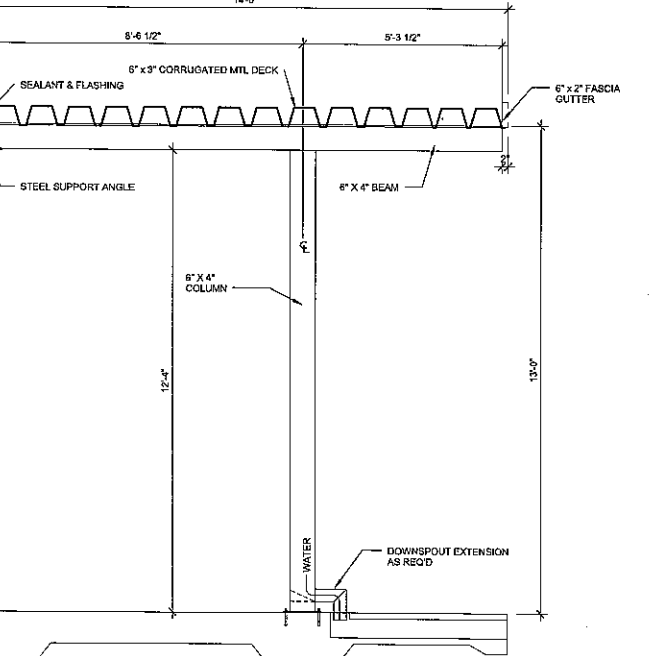
D6 TYPICAL END WALL MOUNT DETAIL @ CANOPY SUPPORT
3/8" = 1'-0"



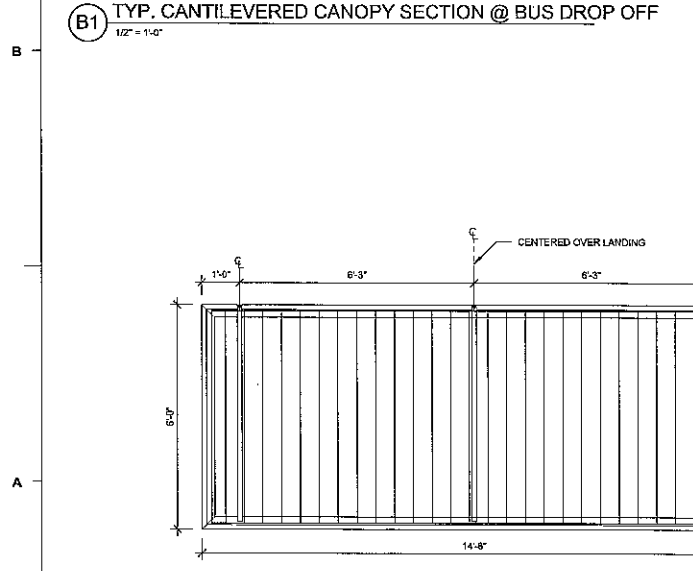
B1 TYP. CANTILEVERED CANOPY SECTION @ BUS DROP OFF
1/2" = 1'-0"



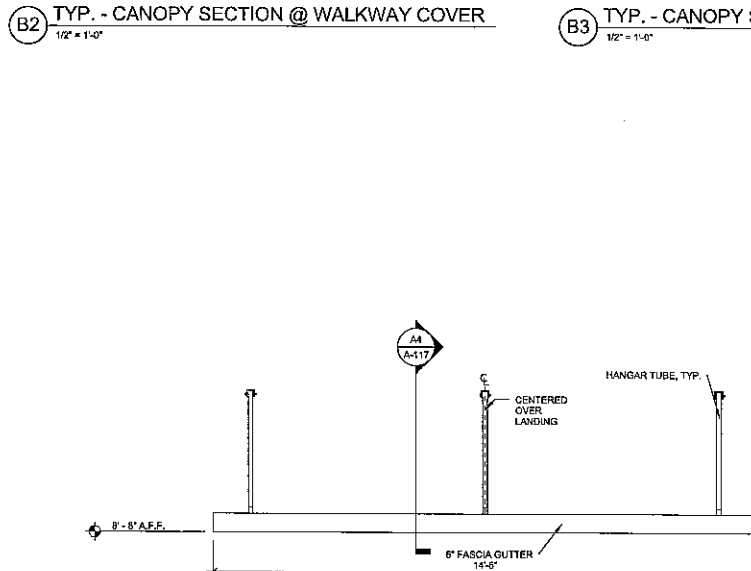
B2 TYP. - CANOPY SECTION @ WALKWAY COVER
1/2" = 1'-0"



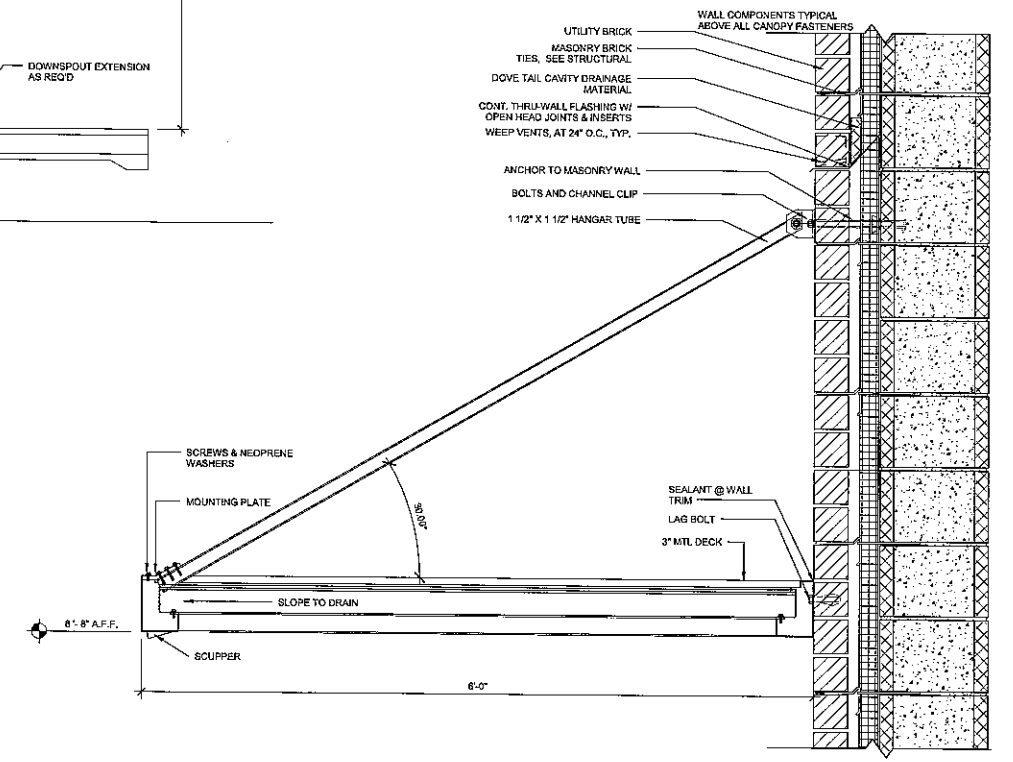
B3 TYP. - CANOPY SECTION @ LOADING DOCK
1/2" = 1'-0"



A1 TYP. WALL HUNG WALKWAY COVER PLAN/ELEV
1/2" = 1'-0"



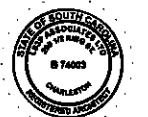
A4 TYP. WALL HUNG WALKWAY COVER
1/2" = 1'-0"



PLEASANT KNOLL MIDDLE SCHOOL

LS3P

227 WEST TRADE STREET SUITE 700
 CHARLOTTE, NORTH CAROLINA 28202
 TEL. 704.333.6666 FAX 704.333.2926
 WWW.LS3P.COM



MEMBERS OF THE AMERICAN INSTITUTE OF ARCHITECTS

COPYRIGHT 2015 ALL RIGHTS RESERVED
 PRINTED OR ELECTRONIC DRAWINGS AND DOCUMENTATION MAY NOT BE REPRODUCED IN ANY FORM WITHOUT WRITTEN PERMISSION FROM LS3P ASSOCIATES LTD.

REVISIONS:

No.	Description	Date
1	ADDENDUM #1	JAN. 05, 2016

PROJECT: 5281-151600
 DATE: FEBRUARY 04, 2016

COVERED WALKWAY SECTIONS & DETAILS

A-117