

Sequoyah High School Roof Replacement (Building B)

9517 Ridge Trail Road

Soddy Daisy, Tennessee 37379

DH&W

ARCHITECTURE INTERIORS PLANNING
1001 Carter Street - Chattanooga - Tennessee 37402
423 | 266 | 4816 www.dhw-architects.com



HCDE BID: 23-23
HCDE BID

Derthick, Henley & Wilkerson Architects

1001 Carter Street

Chattanooga, Tennessee 37402

423-266-4816

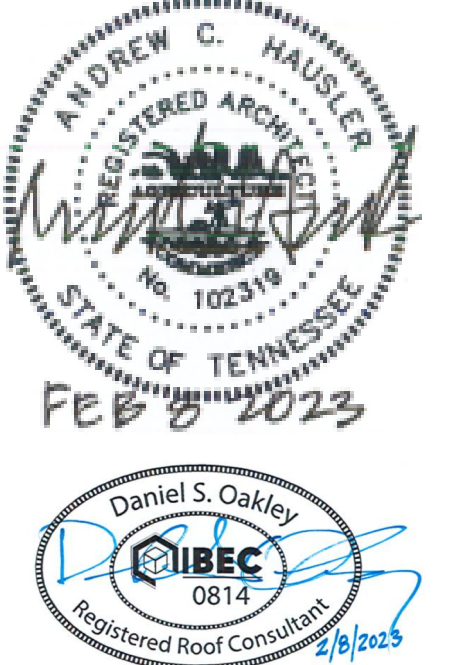
FAX 423-267-8830

Sequoyah High School Roof Replacement (Building B)

9517 Ridge Trail Road
Soddy Daisy, Tennessee 37379

February 8, 2023
Drawn: ND
File: 82210-A

Revisions:



ALL DRAWINGS AND WRITTEN MATERIAL CONSTITUTE ORIGINAL WORK OF THE ARCHITECT AND MAY NOT BE DUPLICATED, USED, OR DISCLOSED WITHOUT CONSENT OF THE ARCHITECT.
© 2023 DHW ARCHITECTS. ALL RIGHTS RESERVED.
NOTE: THESE DRAWINGS ARE PRODUCED IN COLOR AND ARE TO BE USED IN COLOR.

Bid 23-23

Bid Issue

Title:
Cover Sheet

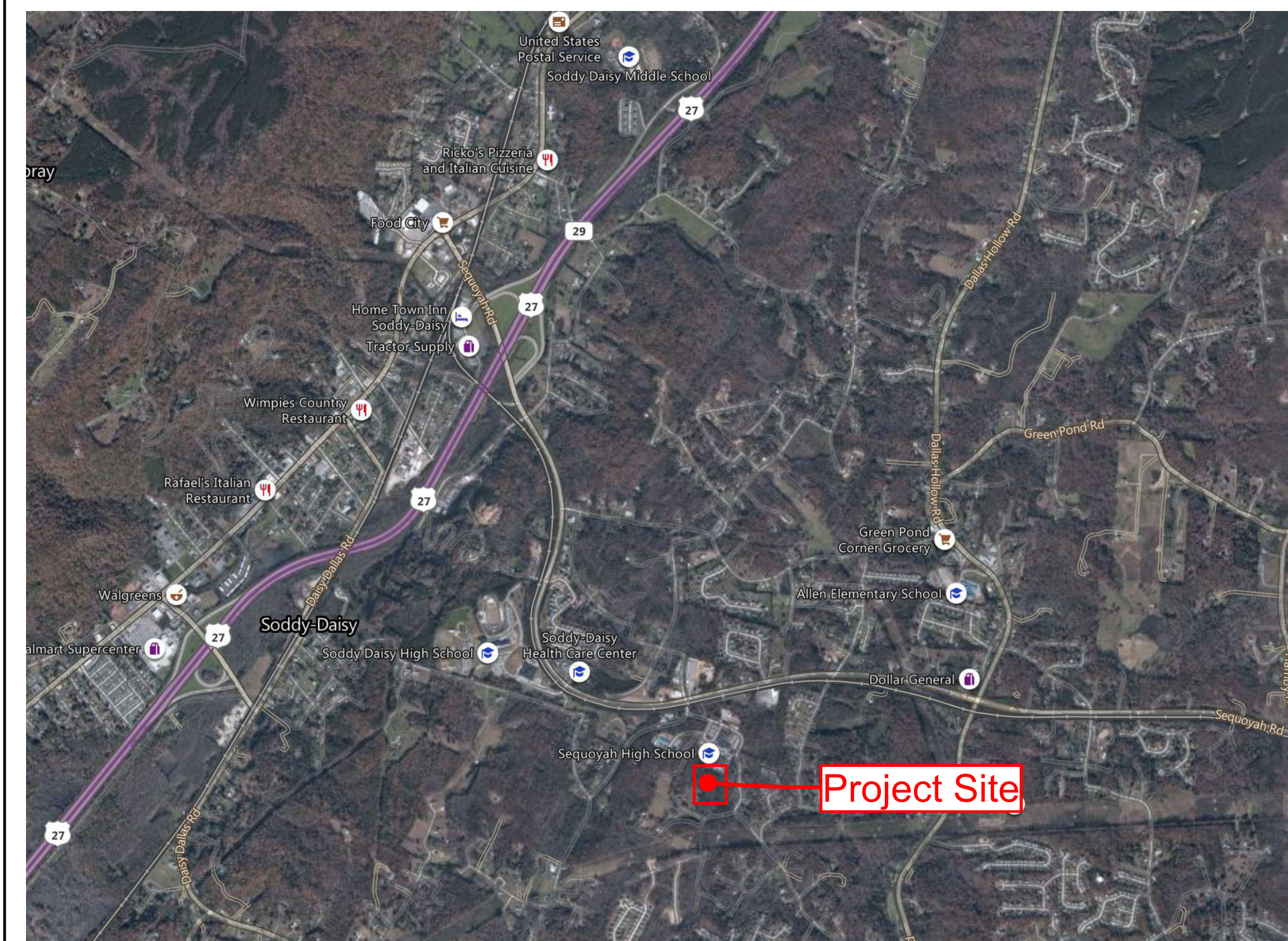
Scale:

Sheet No.

G000



SITE LOCATION



PLAN NORTH
Site Location Map



PLAN NORTH
Site Plan

CONTACTS

ARCHITECT
DERTHICK, HENLEY AND WILKERSON, ARCHITECTS
1001 Carter Street
Chattanooga, Tennessee 37402
Telephone: (423) 266-4816
Fax: (423) 267-8830
Contact: Andrew Hausler
ahausler@dhw-architects.com

SHEET LIST

Sheet Number	Sheet Name	Current Revision Description	Current Revision Date
General	Cover Sheet		
Architecture			
A100	Roof Plan		
A101	Roof Details		
A102	Roof Details		
AD100	Demolition Roof plan		

PROJECT SUMMARY

This project consist of: full tear-off and replacement of the roof system on Building B at Sequoyah High School.

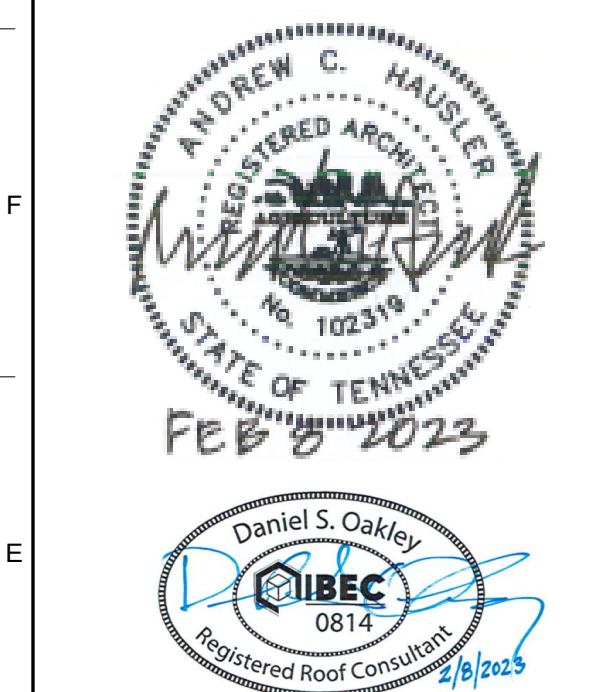
GENERAL ROOF REPLACEMENT NOTES

- Contractor shall field verify all dimensions, elevations, and locations of existing conditions affecting this project, prior to fabrication or installation of new work. Notify architect of any discrepancies from dimensions shown, noted, or required. Adjust dimensions of new construction at direction of architect to allow for actual field conditions.
- Where a detail is shown or note is described for one condition, it shall apply for all like or similar conditions even though not specifically noted on the drawings.
- Provide continuous separation between dissimilar materials as required to prevent galvanic corrosion.
- Extend plumbing vents pipes (VTR's) as required to maintain 8" min. above the adjacent finished roof surface. Extension pipes shall be of schedule 80 PVC with same diameter as existing pipe. Pipe connections shall be watertight & consist of no hub couplings (reprene with stainless steel clamp rings & rigid stainless steel shaft). Existing pipes shall be modified so that new connections occur below the pipe boot. Field verify pipe sizes and locations requiring modifications.
- Provide new galvanized cast iron roof drain baskets at each existing roof drain. Field coordinate compatible manufacturers, configurations, and sizes required.
- Existing roof drains and compression rings are to be cleaned per SSPC-SP2 - Hand Tool Cleaning. After cleaning apply one coat oilalkyd enamel primer & two coats oilalkyd enamel paint.
- Protect VTR from demo & roof replacement debris by securing 1/4" mesh x 23 gauge hardware cloth across top of plumbing vent pipes. Remove hardware cloth at Substantial Completion.
- All edge metal to be ANSI-SPRI ES-1 tested and approved.
- All wood blocking to be kiln dried after preservative treatment (KDAT) installed to meet 200 lbs. per linear foot applied in any direction per FM1-49 and ANSI-SPRI ES-1.
- Where work or access to work areas occur over new and existing roofing, provide minimum roof protection consisting of loose laid 5/8" plywood sheathing over loose laid 3/4" XPS insulation boards over 6 mil polyethylene.
- Replace all liquid-tight flexible metal conduit (LFMC) with new LFMC and watertight J-box assemblies. Provide drip loop so that LFMC slopes down & away from connection points.

CODE SUMMARY

Code Analysis
Applicable Codes:
2012 International Building Code
2012 International Plumbing Code
2012 International Mechanical Code
2012 International Fuel Code
2012 International Fire Code
2011 National Electrical Code
2009 International Energy Conservation Code
2009 ANSI (National Standard) Accessibility Code

Climate Zone 4A
Occupancy Type:
Occupancy Group E



ALL DRAWINGS AND WRITTEN MATERIAL CONSTITUTE ORIGINAL WORK OF THE ARCHITECT AND MAY NOT BE DUPLICATED, USED, OR DISCLOSED WITHOUT THE CONSENT OF THE ARCHITECT. © 2023 DHW ARCHITECTS. ALL RIGHTS RESERVED. NOTE THAT THESE DRAWINGS ARE PRODUCED IN COLOR AND ARE TO BE USED IN COLOR.

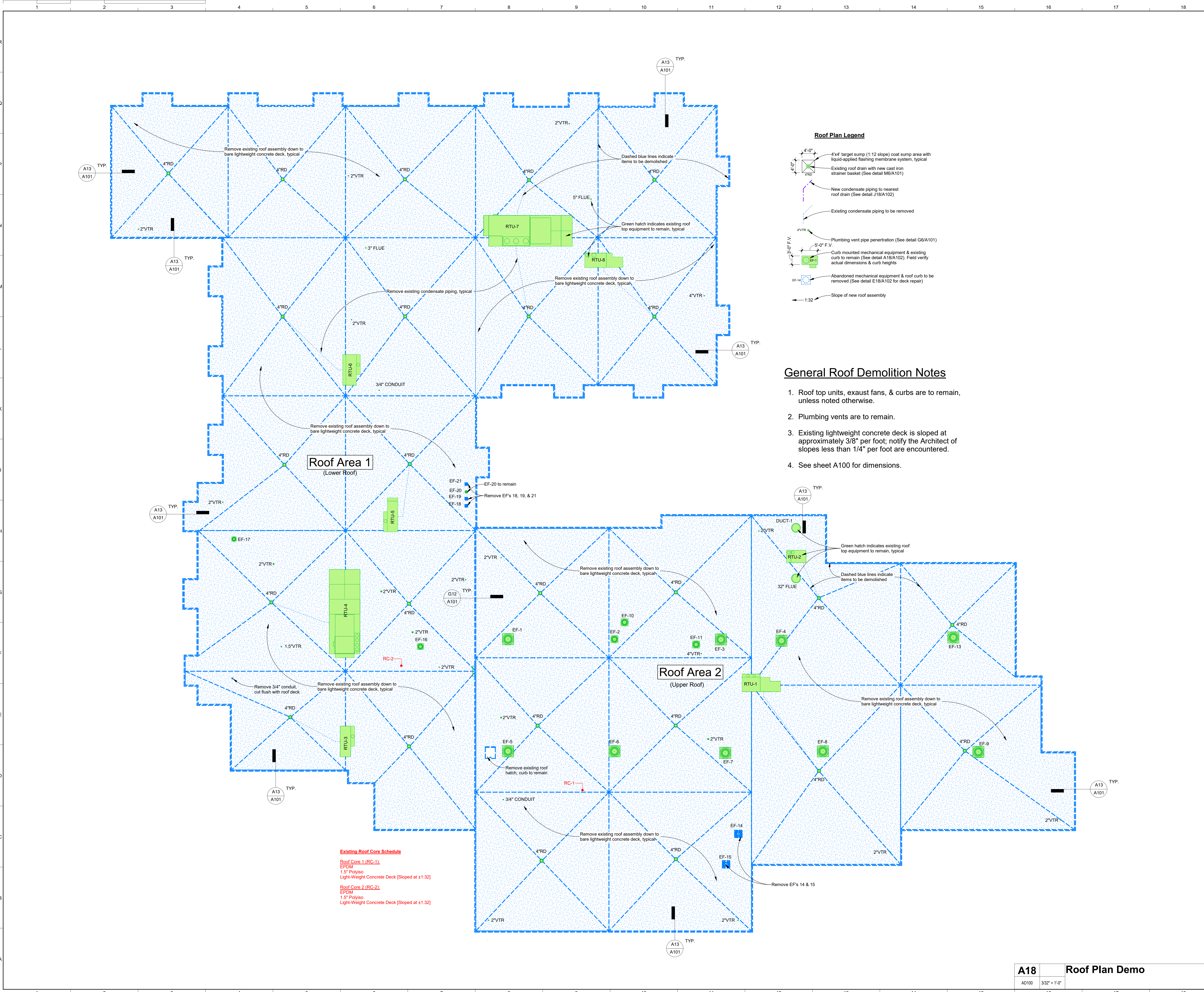
Bid 23-23

Bid Issue

Title:
Demolition Roof plan

Scale:
Sheet No.

A18 Roof Plan Demo
AD100 3/32" = 1'-0"
AD100



Roof Plan Legend

- 4'x4' target sump (1:12 slope) coat sump area with liquid-applied flashing membrane system, typical
- Existing roof drain with new cast iron strainer basket (See detail M6/A101)
- New condensate piping to nearest roof drain (See detail J18/A102)
- Existing condensate piping to be removed
- Plumbing vent pipe penetration (See detail G6/A101)
- Curb mounted mechanical equipment & existing curb to remain (See detail A18/A102). Field verify actual dimensions & curb heights
- Abandoned mechanical equipment & roof curb to be removed (See detail E18/A102 for deck repair)
- Slope of new roof assembly

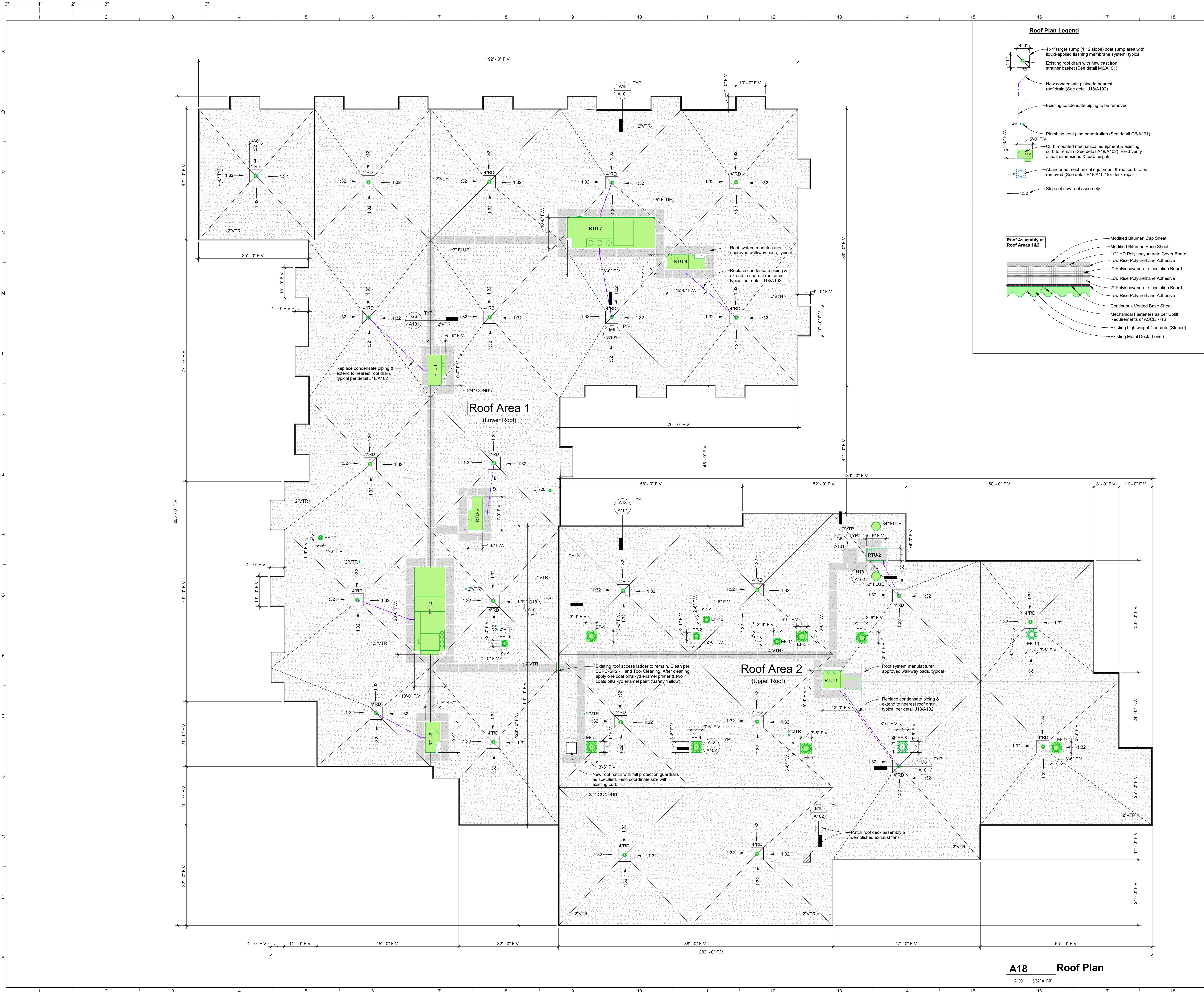
General Roof Demolition Notes

1. Roof top units, exhaust fans, & curbs are to remain, unless noted otherwise.
2. Plumbing vents are to remain.
3. Existing lightweight concrete deck is sloped at approximately 3/8" per foot; notify the Architect of slopes less than 1/4" per foot are encountered.
4. See sheet A100 for dimensions.

Existing Roof Core Schedule

Roof Core 1 (RC-1):
EPDM
1.5" Polyiso
Light-Weight Concrete Deck (Sloped at 1:32)

Roof Core 2 (RC-2):
EPDM
1.5" Polyiso
Light-Weight Concrete Deck (Sloped at 1:32)



Roof Plan Legend

- 4"x4" target sump (1:12 slope) coat sump area with liquid-applied flashing membrane system, typical
- Existing roof drain with new cast iron strainer basket (See detail M6/A101)
- New condensate piping to nearest roof drain (See detail J18/A102)
- Existing condensate piping to be removed
- Plumbing vent pipe penetration (See detail G6/A101)
- Curb mounted mechanical equipment & existing curb to remain (See detail A18/A102). Field verify actual dimensions & curb heights
- Abandoned mechanical equipment & roof curb to be removed (See detail E18/A102 for deck repair)
- 1:32 Slope of new roof assembly

Roof Assembly at Roof Areas 1&2

- Modified Bitumen Cap Sheet
- Modified Bitumen Base Sheet
- 1/2" HD Polyisocyanurate Cover Board
- Low Rise Polyurethane Adhesive
- 2" Polyisocyanurate Insulation Board
- Low Rise Polyurethane Adhesive
- 2" Polyisocyanurate Insulation Board
- Low Rise Polyurethane Adhesive
- Continuous Vented Base Sheet
- Mechanical Fasteners as per Uplift Requirements of ASCE 7-16
- Existing Lightweight Concrete (Sloped)
- Existing Metal Deck (Level)

Sequoyah High School Roof Replacement (Building B)
 9517 Ridge Trail Road
 Soddy Daisy, Tennessee 37379

February 8, 2023
 Drawn: ND
 File: 82210-A

Revisions:

ALL DRAWINGS AND WRITTEN MATERIAL CONSTITUTE ORIGINAL WORK OF THE ARCHITECT AND MAY NOT BE DUPLICATED, USED, OR DISCLOSED WITHOUT CONSENT OF THE ARCHITECT.
 © 2023 DH&W ARCHITECTS. ALL RIGHTS RESERVED.
 NOTE: THAT THESE DRAWINGS ARE PRODUCED IN COLOR AND ARE TO BE USED IN COLOR.

Bid 23-23

Bid Issue

Title: **Roof Plan**

Scale:

Sheet No.

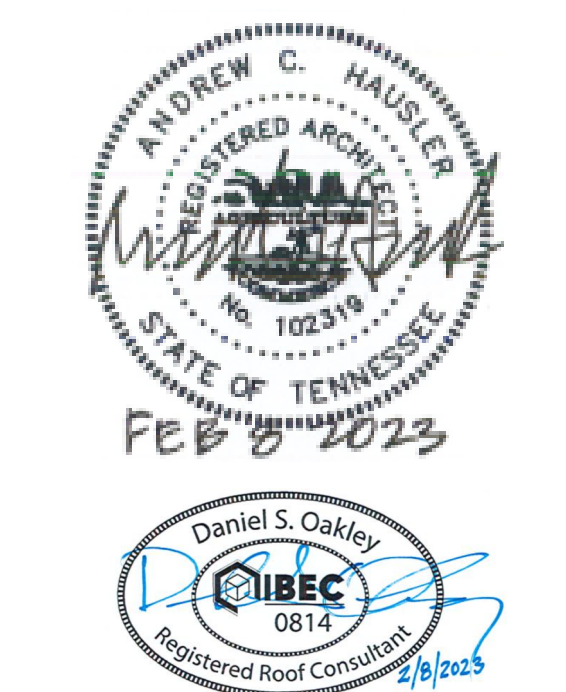
HCDE BID: 23-23

Sequoyah High School Roof Replacement (Building B)

9517 Ridge Trail Road
Soddy Daisy, Tennessee 37379

February 8, 2023
Drawn: ND
File: 82210-A

Revisions:



ALL DRAWINGS AND WRITTEN MATERIAL CONSTITUTE ORIGINAL WORK OF THE ARCHITECT AND MAY NOT BE DUPLICATED, USED, OR DISCLOSED WITHOUT THE CONSENT OF THE ARCHITECT. © 2023 DH&W ARCHITECTS. ALL RIGHTS RESERVED. NOTE: THAT THESE DRAWINGS ARE PRODUCED IN COLOR AND ARE TO BE USED IN COLOR.

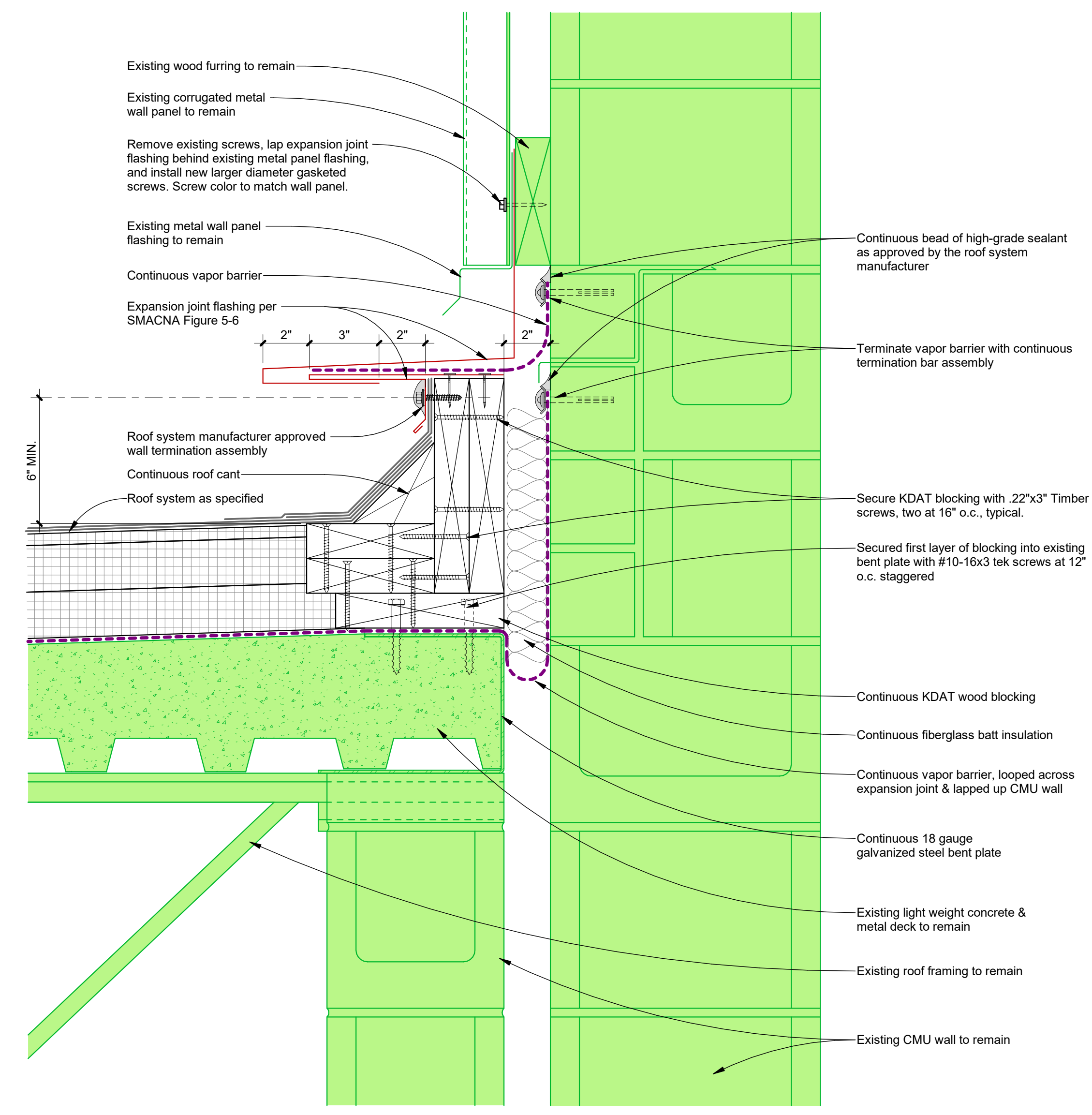
Bid 23-23

Bid Issue

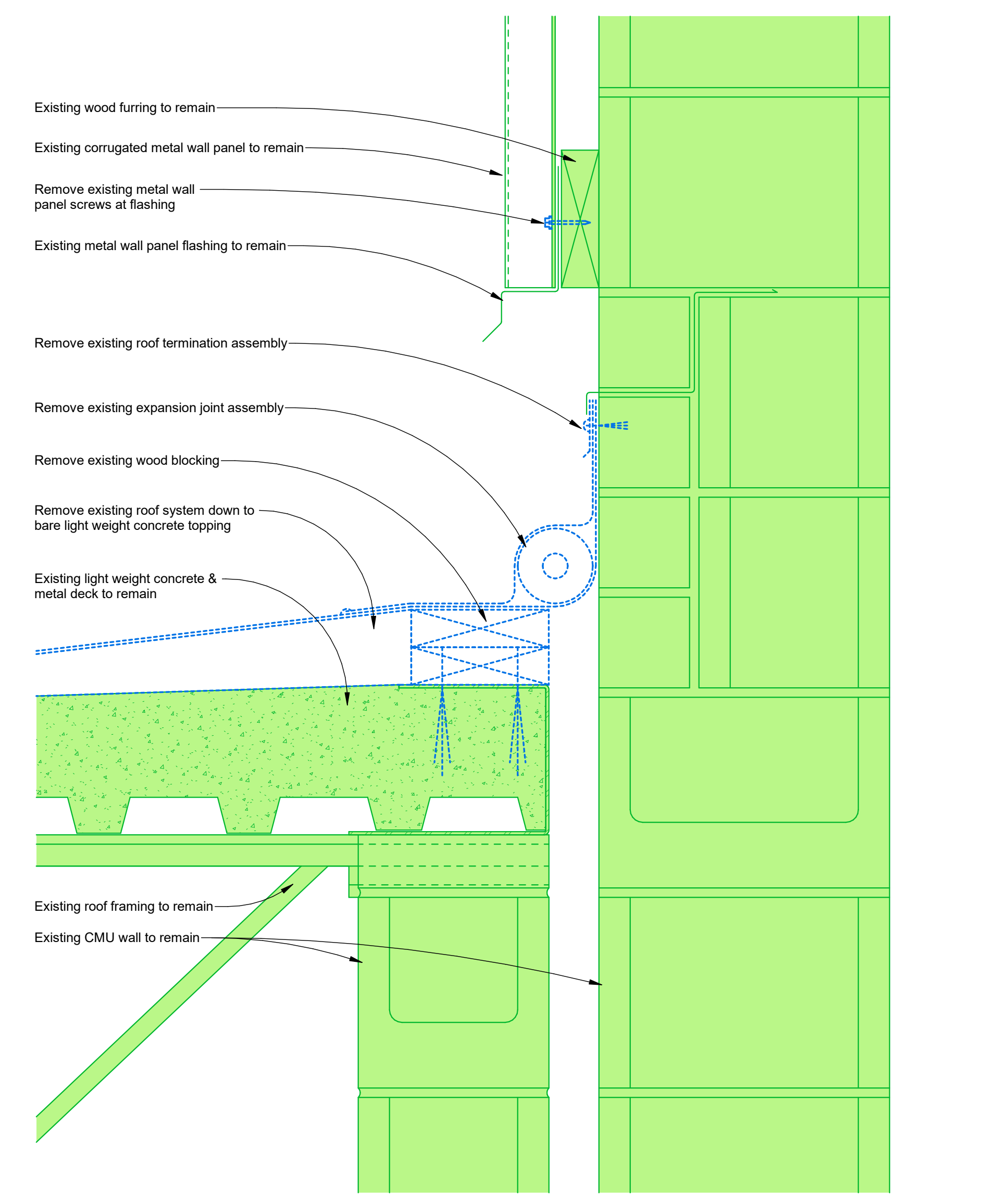
Title:
Roof Details

Scale:
Sheet No.

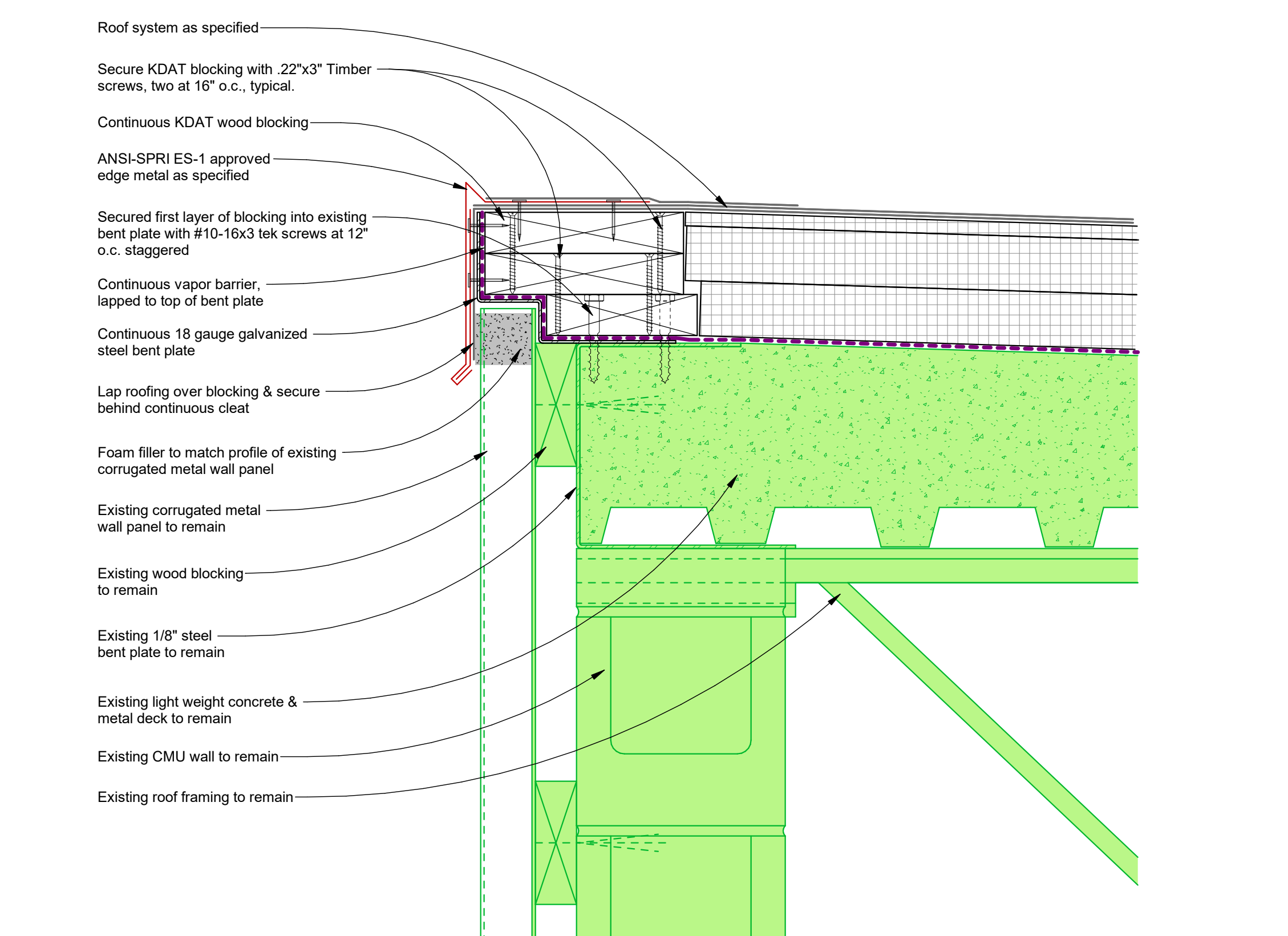
A101



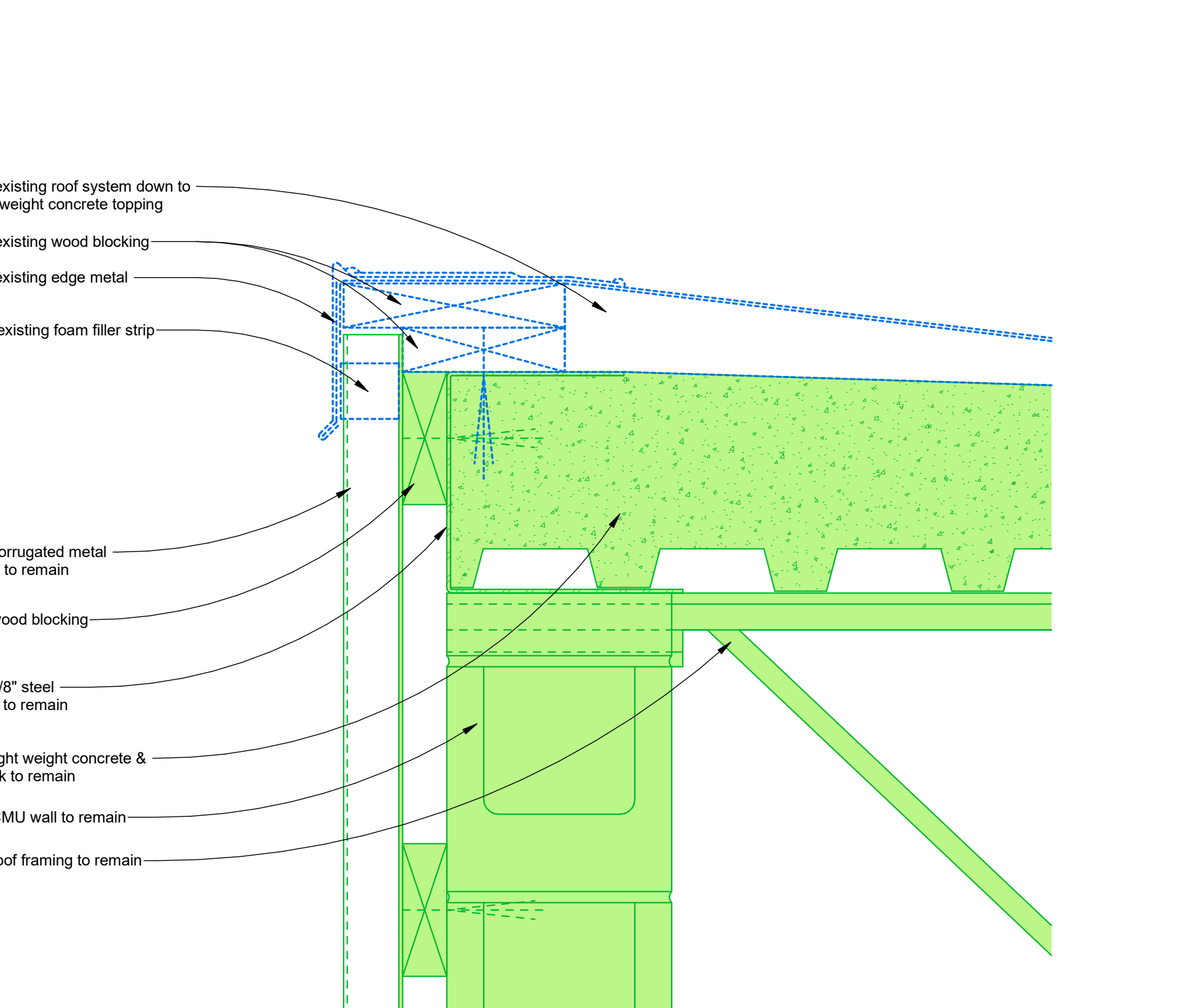
G18 A100
A101 3" = 1'-0"



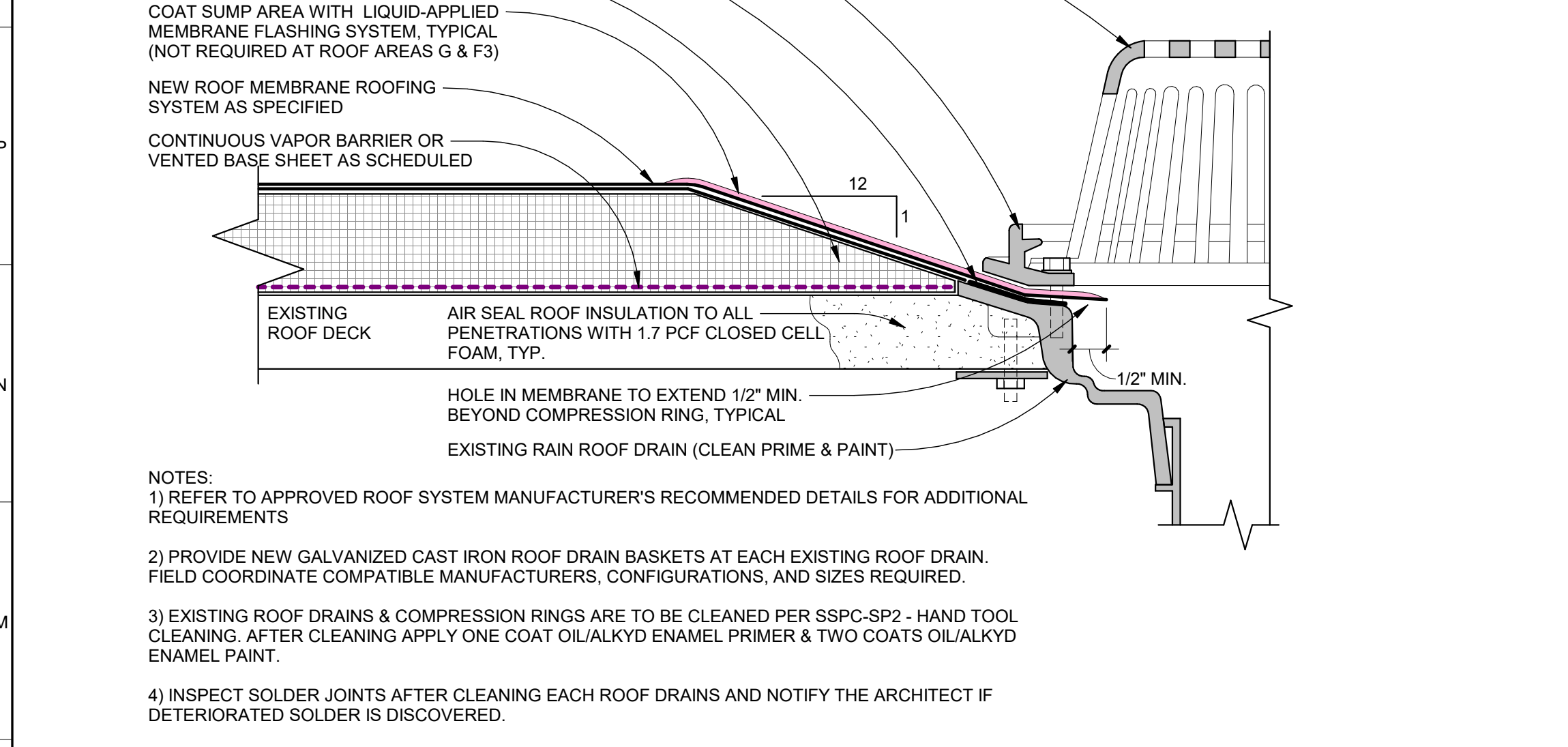
G12 AD100
A101 3" = 1'-0"



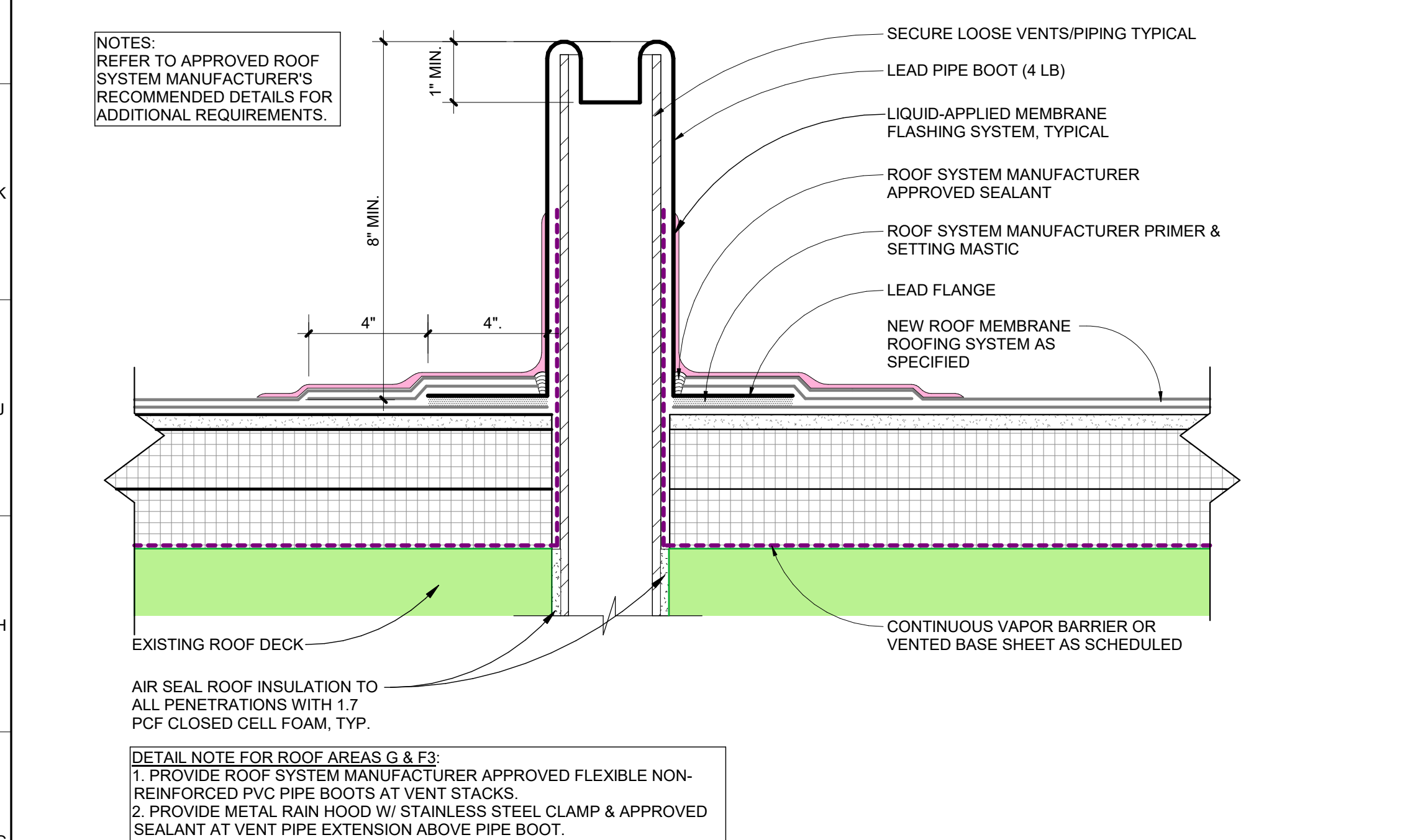
A18 A100
A101 3" = 1'-0"



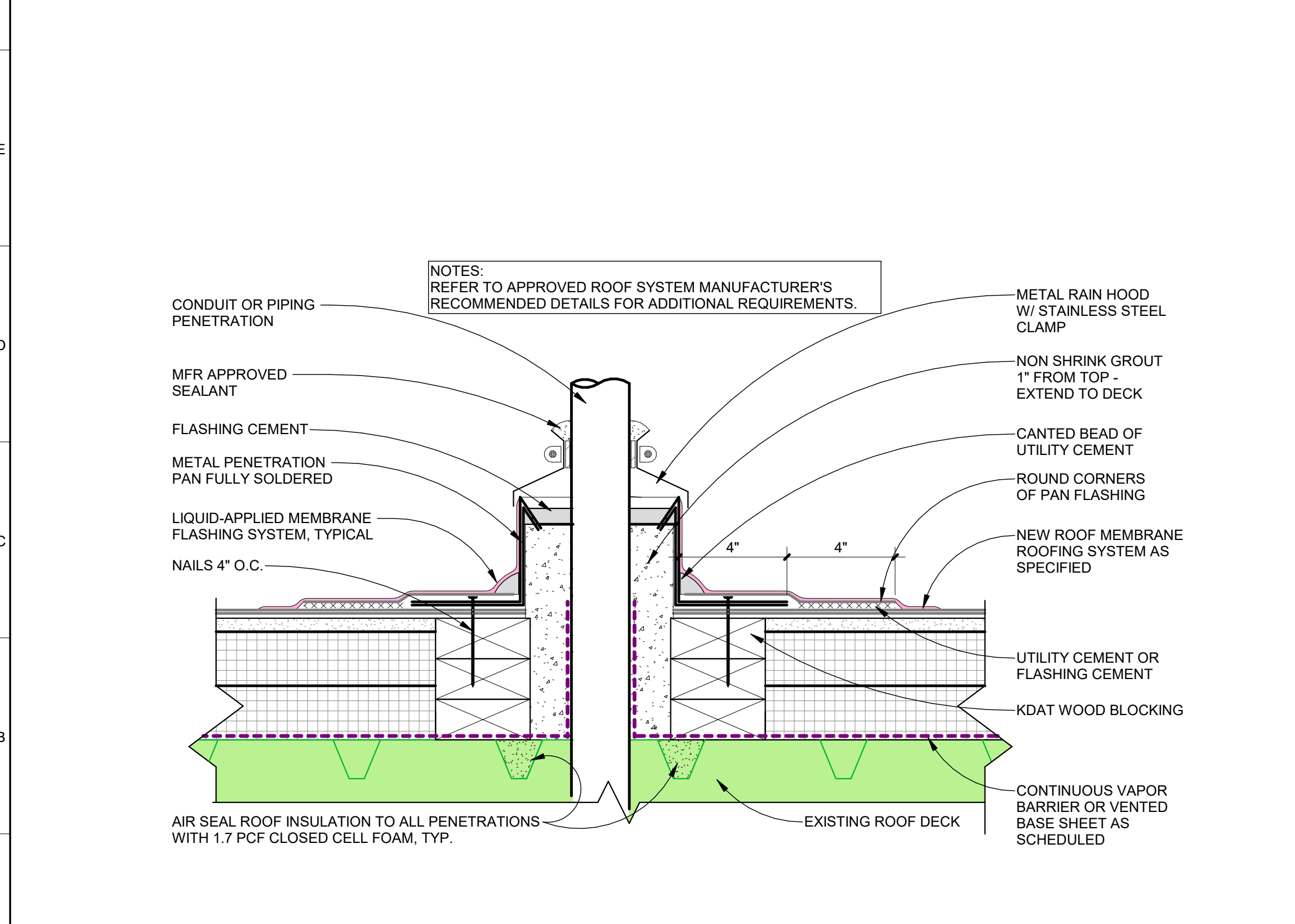
A13 AD100
A101 3" = 1'-0"



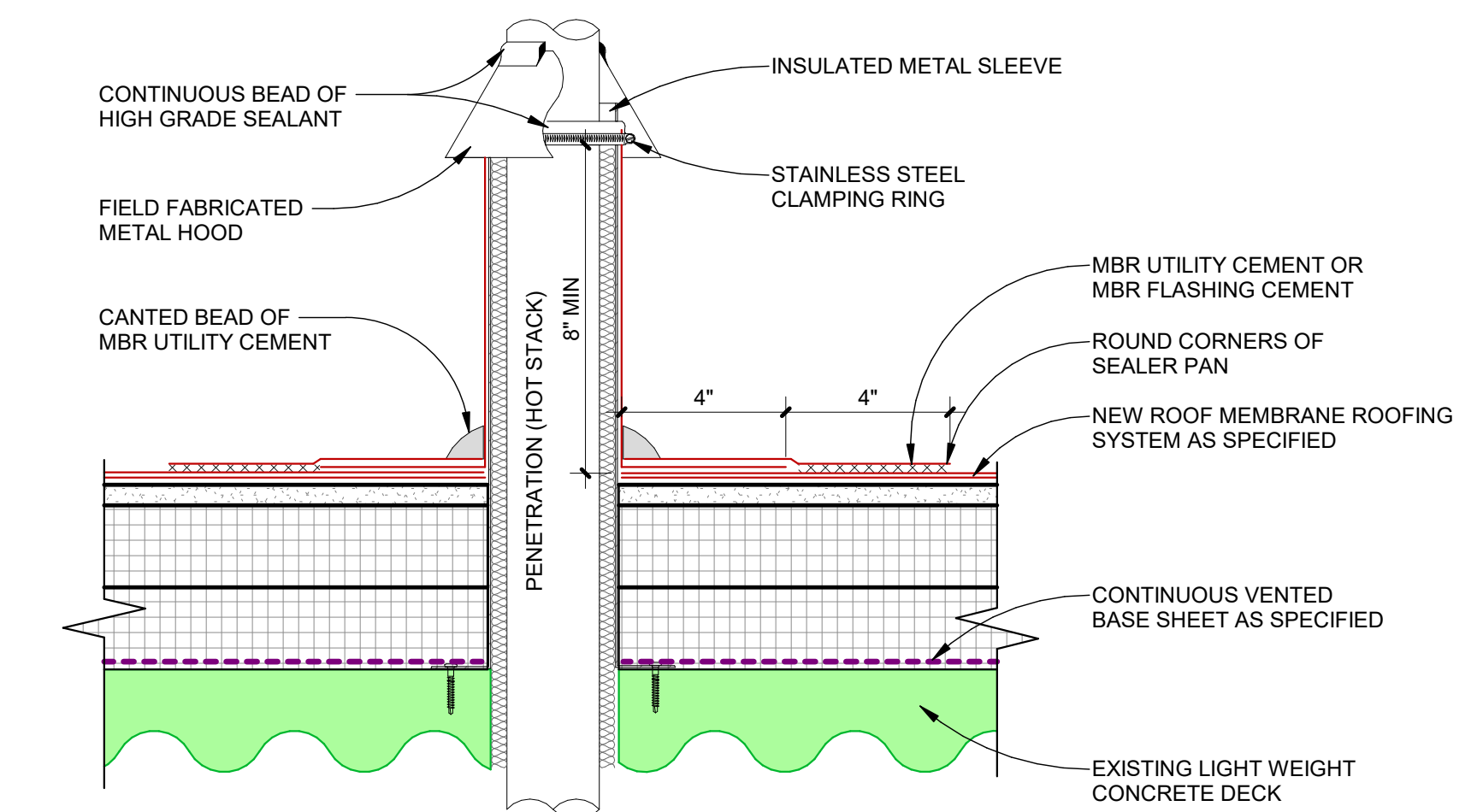
M6 A100
A101 6" = 1'-0"



G6 A100
A101 3" = 1'-0"

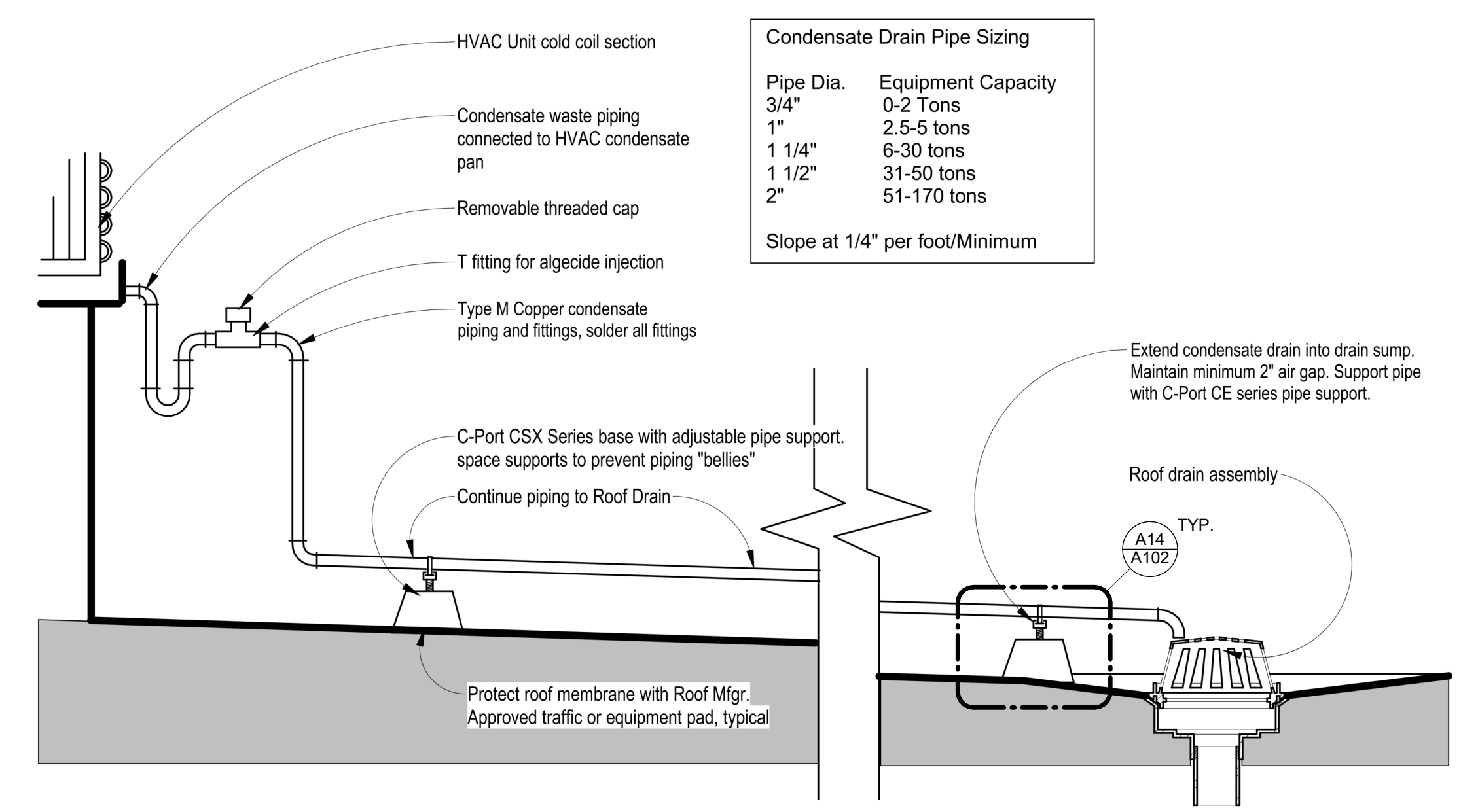


A6 A100
A101 3" = 1'-0"

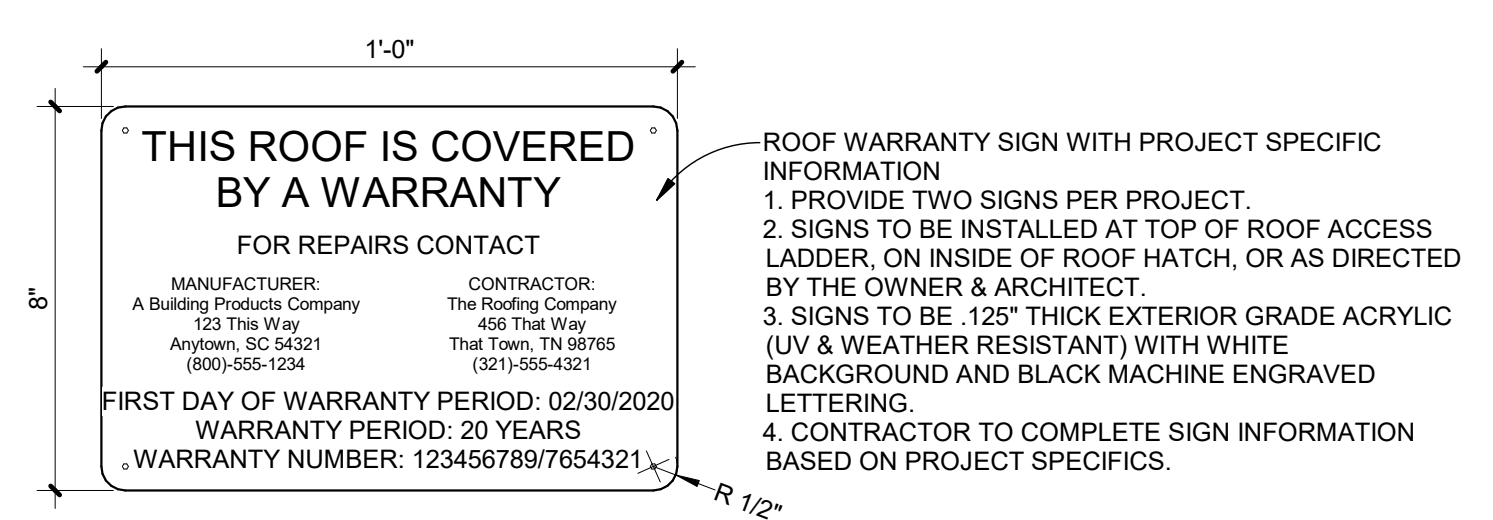


NOTES:
 1. REMOVE ALL EXISTING FLASHING, LEAD, ETC. PIPE SURFACE MUST BE FREE OF ALL RUST, GREASE, INSULATION, ETC.
 2. PIPE MUST BE ANCHORED FOR STABILITY.
 3. NO WRINKLES OR FOLDS UNDER CLAMPING RING.

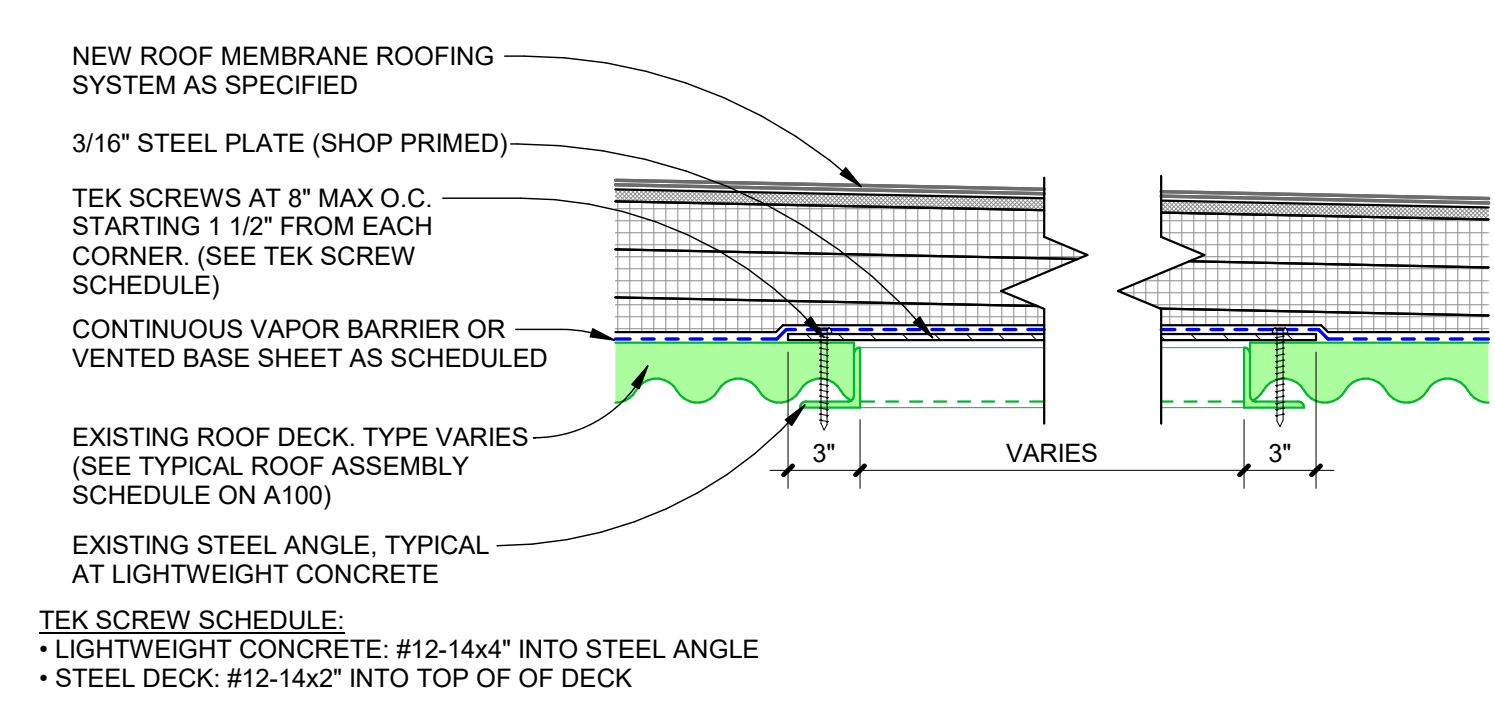
N18	A100	Roof Detail - Hot Stack
A102	3" = 1'-0"	



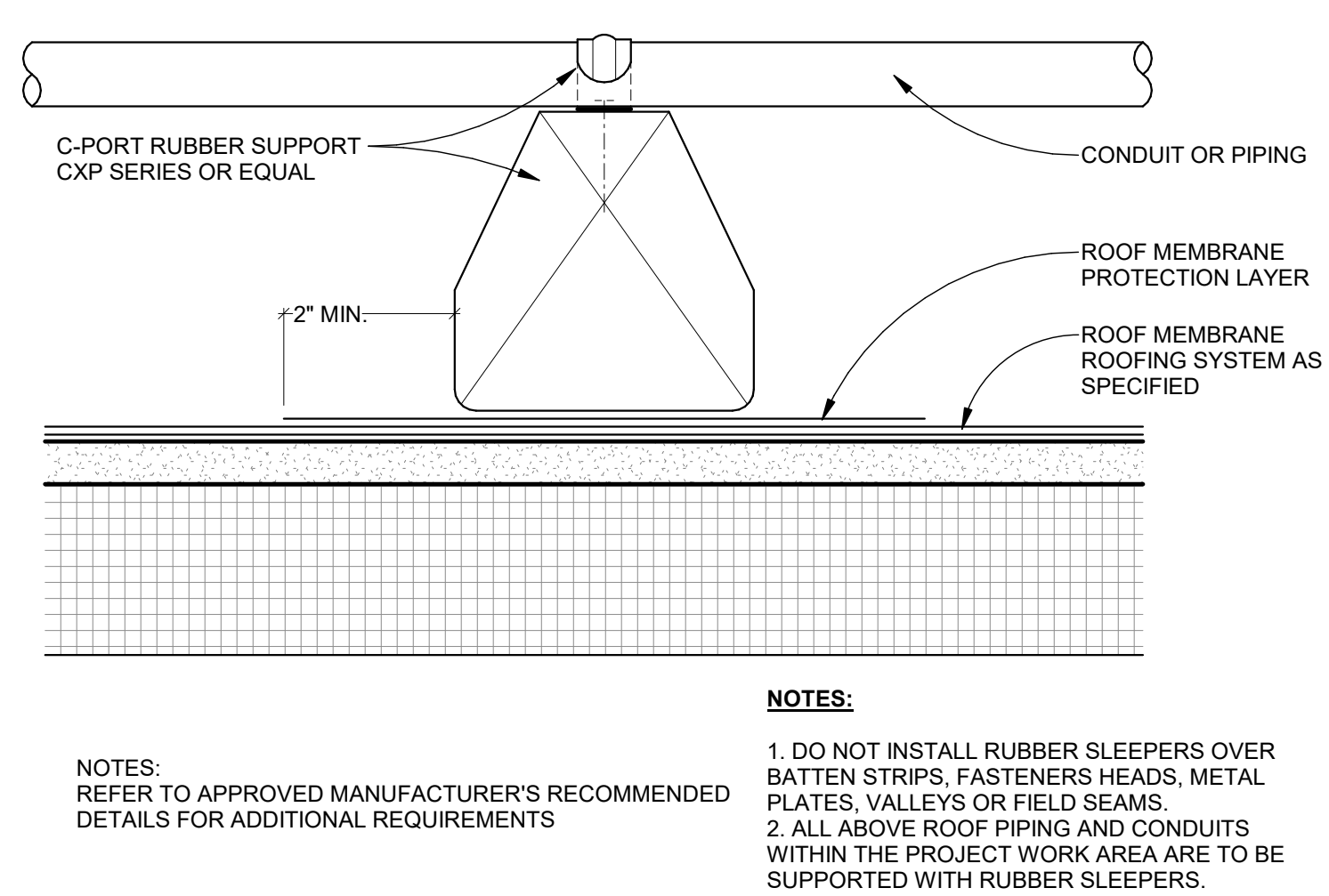
J18	A100	Roof Detail - Condensate Piping
A102	1" = 1'-0"	



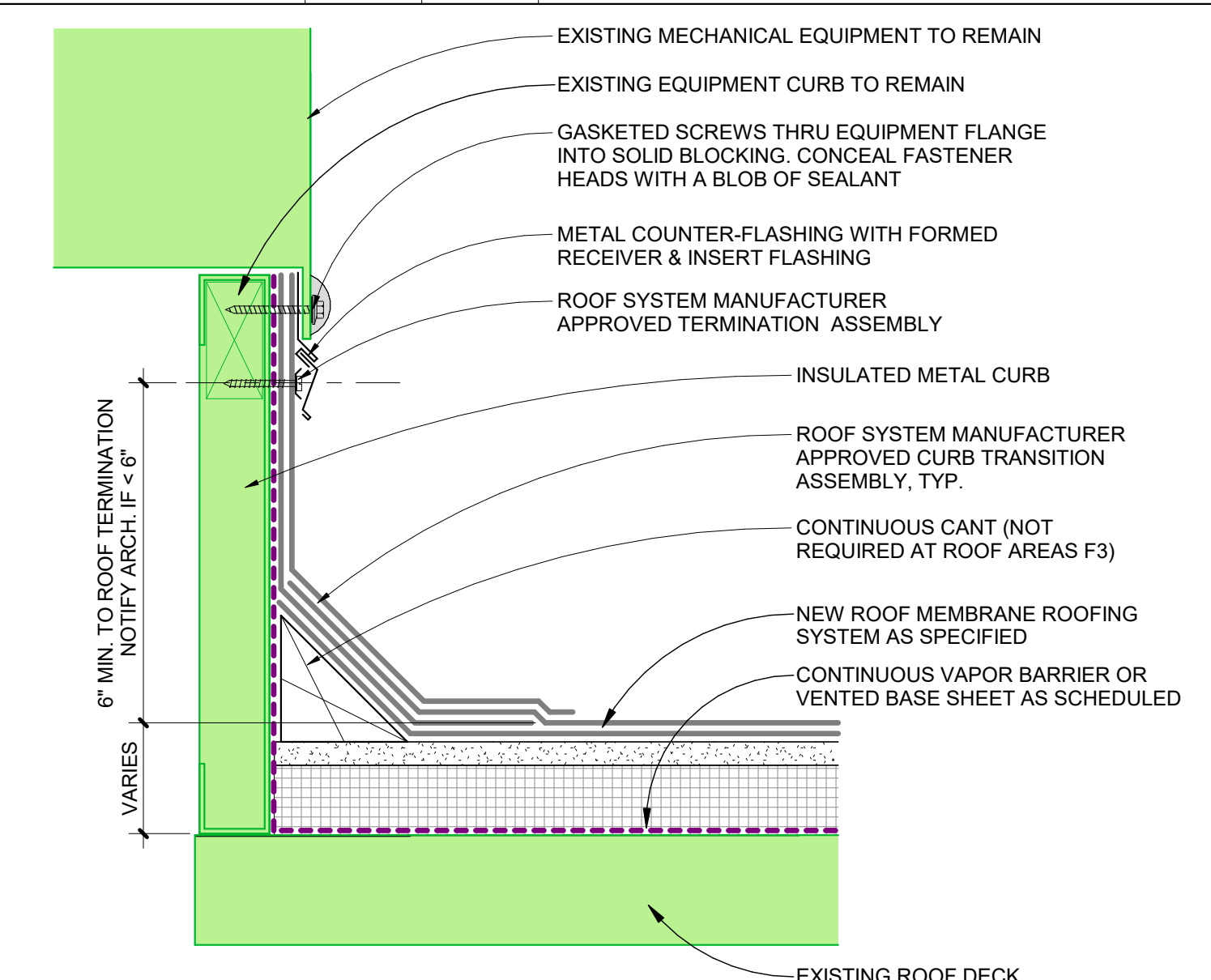
E14	A102	Roof Detail - Roof Warranty Sign
A102	3" = 1'-0"	



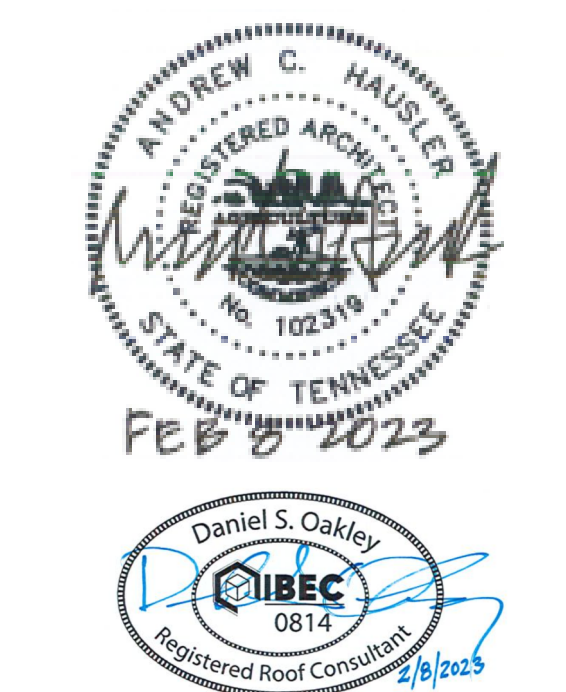
E18	A100	Roof Detail - Deck Repair
A102	1 1/2" = 1'-0"	



A14	A102	Roof Detail - Rubber Sleeper
A102	6" = 1'-0"	



A18	A100	Roof Detail - Insulated Curb
A102	3" = 1'-0"	



ALL DRAWINGS AND WRITTEN MATERIAL CONSTITUTE ORIGINAL WORK OF THE ARCHITECT AND MAY NOT BE DUPLICATED, USED, OR DISCLOSED WITHOUT CONSENT OF THE ARCHITECT.
 © 2023 DHW ARCHITECTS. ALL RIGHTS RESERVED.
 NOTE: THAT THESE DRAWINGS ARE PRODUCED IN COLOR AND ARE TO BE USED IN COLOR.

Bid 23-23
Bid Issue

Title:
Roof Details

Scale:
 Sheet No.