

Peralta Community College District: Berkeley City College - West

Project #4668

Memo - Addendum #2

July 11, 2022

The following modifications have been made to the bidding documents:

- 1) Revise Project Schedule: A new project file has been uploaded to the main project folder **07 – Addendum No. 2** (All Trades) The new schedule has a revised start of construction along with a resequencing of the deep pier work and earthwork scopes.
 - a. Folder Name: 07 – Addendum No. 02 (All Trades)
 - b. File Name: Exhibit R – Project Schedule – Revised 071122.pdf

- 2) Revised Bid Date:
 - a. Bid date for **core and shell trades** has changed to **07/20/22@5:00pm**. Revised bid date applies to Bid Packages: 07 – Earthwork/Grading; 08 – Survey and Staking; 09-Site Utilities; 10 – Site Concrete/Topping Slab/Concrete Polishing; 11 – Structural Concrete/Rebar/Post Tension Reinforcing; 12 – Deep Piers and Shoring; 13 – Misc. Metals, 14 – Roofing, Waterproofing; 15 – Masonry; 16 – Landscaping; 17 – Fences and Gates
 - b. Bid date for **demo and abatement** packages has changed to **07/14/22@5:00pm** Revised bid date applies to Bid Packages: 05 – HazMat Abatement/Soft Demolition; 06 – Demolition-Hard

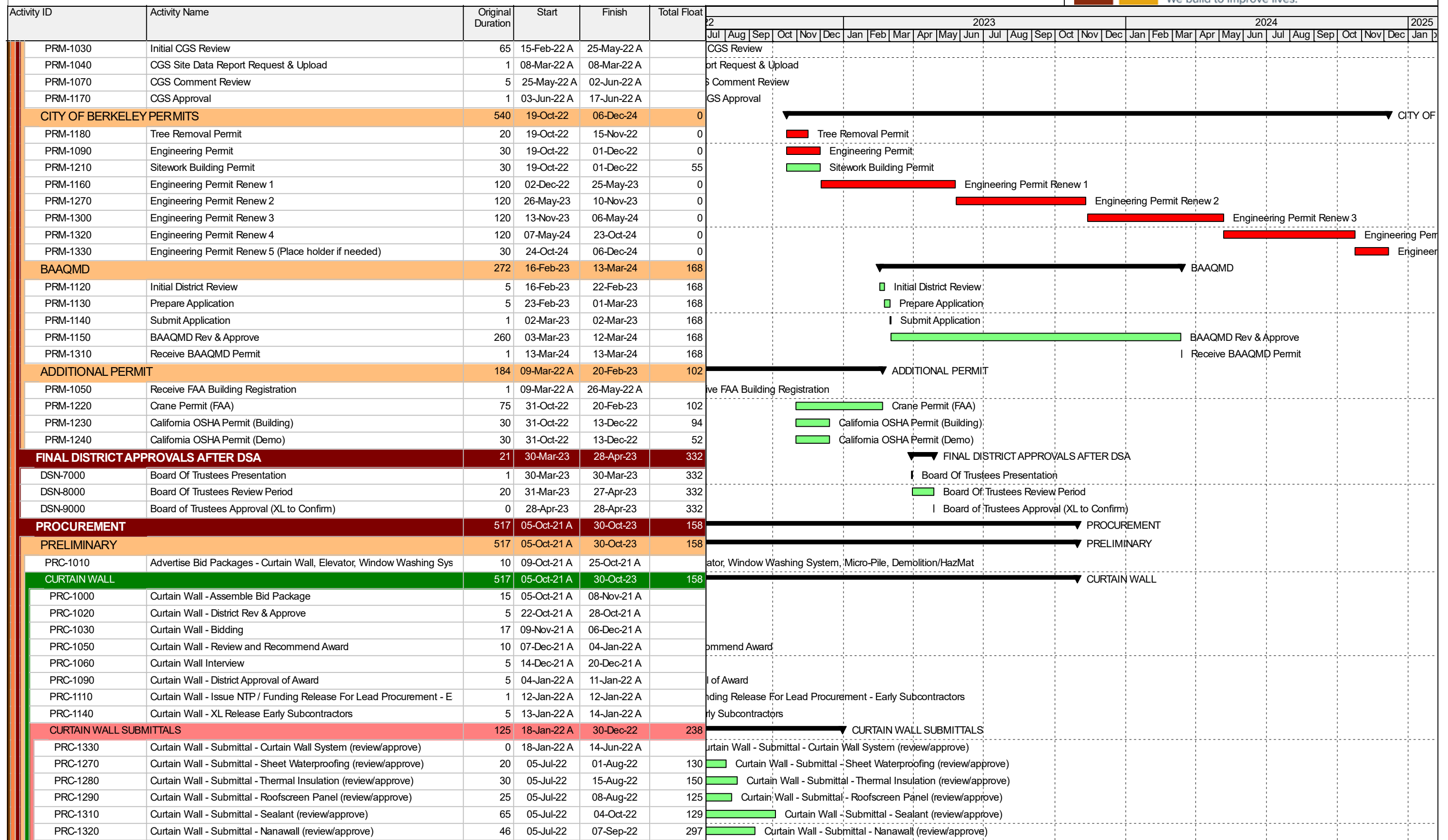
PCCD Berkeley City College Milvia St New Bldg - 1



Activity ID	Activity Name	Original Duration	Start	Finish	Total Float	2023												2024												2025									
						2023												2024												2025									
						Jul	Aug	Sep	Oct	Nov	Dec	Jan	Feb	Mar	Apr	May	Jun	Jul	Aug	Sep	Oct	Nov	Dec	Jan	Feb	Mar	Apr	May	Jun	Jul	Aug	Sep	Oct	Nov	Dec	Jan			
PCCD Berkeley City College Milvia St New Bldg - 1						1009	01-Dec-20 A	06-Dec-24	0																														
MILESTONES						884	12-May-21 A	06-Dec-24	0																														
CONTRACT MILESTONES						884	12-May-21 A	06-Dec-24	0																														
MM-20000	NTP for Pre-Construction Phase	0	12-May-21 A																																				
MM-10000	NTP for Design	0	01-Jun-21 A																																				
MM-30000	100% CD Permit Approved	0		05-Jul-22	585	100% CD Permit Approved																																	
MM-90000	GMP Board Approval	0		11-Oct-22	0	◆ GMP Board Approval																																	
MM-40000	Award XL NTP for Construction	0		28-Oct-22	502	◆ Award XL NTP for Construction																																	
MM-100000	Hazmat	0		28-Dec-22	462	◆ Hazmat																																	
MM-70000	Demolition - Phase 1	0	18-Jan-23		480	◆ Demolition - Phase 1																																	
MM-80000	Construction	0	22-Mar-23		436	◆ Construction																																	
MM-50000	Substantial Completion	0		28-Jun-24	35	◆ Substantial Completion																																	
MM-60000	Project Complete	0		06-Dec-24	0	◆ Project Complete																																	
OWNER MILESTONES						40	01-Jul-24	26-Aug-24	42																														
OM-10000	Owner procured material and equipment	0	01-Jul-24	01-Jul-24	82																																		
OM-20000	Owner Fit-out	40	01-Jul-24	26-Aug-24	42	Owner Fit-out																																	
Construction Milestones						209	06-Jul-23	01-May-24	123																														
MCO-1000	First day of Framing - Level 1	0	06-Jul-23		148	◆ First day of Framing - Level 1																																	
MCO-1100	First day of Framing - Level 2	0	13-Jul-23		143	◆ First day of Framing - Level 2																																	
MCO-1200	First day of Framing - Level 3	0	21-Jul-23		137	◆ First day of Framing - Level 3																																	
MCO-1500	First day of Framing - Level 4	0	03-Aug-23		128	◆ First day of Framing - Level 4																																	
MCO-1600	First day of Framing - Level 5	0	07-Aug-23		126	◆ First day of Framing - Level 5																																	
MCO-1700	First day of Framing - Level 6	0	09-Aug-23		124	◆ First day of Framing - Level 6																																	
MCO-1400	First day of Drywall - Level 1	0	24-Jan-24		193	◆ First day of Drywall - Level 1																																	
MCO-2100	First day of Drywall - Level 2	0	31-Jan-24		188	◆ First day of Drywall - Level 2																																	
MCO-2200	First day of Drywall - Level 3	0	07-Feb-24		183	◆ First day of Drywall - Level 3																																	
MCO-2300	First day of Drywall - Level 4	0	07-Feb-24		183	◆ First day of Drywall - Level 4																																	
MCO-2400	First day of Drywall - Level 5	0	15-Feb-24		178	◆ First day of Drywall - Level 5																																	
MCO-2500	First day of Drywall - Level 6	0	22-Feb-24		173	◆ First day of Drywall - Level 6																																	
MCO-1300	Elevator Complete	0		28-Feb-24	168	◆ Elevator Complete																																	
MCO-1800	Power to Site	0	01-May-24		124	◆ Power to Site																																	
MCO-1900	Energize Equipment	0	01-May-24		124	◆ Energize Equipment																																	
MCO-2000	Water to Site	0		01-May-24	123	◆ Water to Site																																	
XL Milestones						440	09-Dec-22	04-Sep-24	35																														
Sustainability Milestones						185	07-Aug-23	30-Apr-24	124																														
XLM-1110	S&C LEED Paperwork Complete (Tie to Superstructure Complete Mile)	0		07-Aug-23	309	◆ S&C LEED Paperwork Complete (Tie to Superstructure Complete Milestone)																																	
XLM-1120	TI LEED Paperwork Complete (Interiors Complete Milestone)	10	15-Mar-24	28-Mar-24	147	◆ TI LEED Paperwork Complete (Interiors Complete Milestone)																																	
XLM-1130	Material Complete (Prior to CX Starting)	0		30-Apr-24	124	◆ Material Complete (Prior to CX Starting)																																	
Start Milestones						351	09-Dec-22	01-May-24	124																														
XLM-1000	Mobilization	0	09-Dec-22		55	◆ Mobilization																																	
XLM-1010	Start - Demo	0	03-Jan-23		62	◆ Start - Demo																																	
XLM-1020	Start - Substructure/Foundation	0	22-Mar-23		334	◆ Start - Substructure/Foundation																																	
XLM-1030	Start - Superstructure	0	05-May-23		119	◆ Start - Superstructure																																	
XLM-1040	Start - Construction - TI	0	08-Aug-23		309	◆ Start - Construction - TI																																	
XLM-1050	Start - Exterior Facade	0	15-Sep-23		192	◆ Start - Exterior Facade																																	
XLM-1060	Start - Pre-functional Testing	0	01-May-24		124	◆ Start - Pre-functional Testing																																	
Completion Milestones						274	07-Aug-23	04-Sep-24	35																														

█ Remaining Level of Effort
 █ Actual Work
 █ Critical Remaining Work
█ Actual Level of Effort
 █ Remaining Work
 ◆ ◆ Milestone

PCCD Berkeley City College Milvia St New Bldg - 1



█ Remaining Level of Effort
 █ Actual Work
 █ Critical Remaining Work
█ Actual Level of Effort
 █ Remaining Work
 ◆ ◆ Milestone

PCCD Berkeley City College Milvia St New Bldg - 1



Activity ID	Activity Name	Original Duration	Start	Finish	Total Float	2023																									2024					2025
						2023												2024													2025					
						Jul	Aug	Sep	Oct	Nov	Dec	Jan	Feb	Mar	Apr	May	Jun	Jul	Aug	Sep	Oct	Nov	Dec	Jan	Feb	Mar	Apr	May	Jun	Jul	Aug	Sep	Oct	Nov	Dec	Jan
PRC-1340	Curtain Wall - Submittal - Glazing (review/approve)	64	05-Jul-22	03-Oct-22	130	Curtain Wall - Submittal - Glazing (review/approve)																														
PRC-1460	Curtain Wall - Submittal - Louver (review/approve)	20	07-Sep-22	04-Oct-22	199	Curtain Wall - Submittal - Louver (review/approve)																														
PRC-1470	Curtain Wall - Submittal - Automatic operators/bollards (review/approve)	80	07-Sep-22	30-Dec-22	238	Curtain Wall - Submittal - Automatic operators/bollards (review/approve)																														
PRC-1480	Curtain Wall - Submittal - Aluminum storefront/door hardware submittals	80	07-Sep-22	30-Dec-22	115	Curtain Wall - Submittal - Aluminum storefront/door hardware submittals (review/approve)																														
PRC-1300	Curtain Wall - Submittal - Aluminum panels/parapet cap (review/approve)	36	09-Sep-22	28-Oct-22	67	Curtain Wall - Submittal - Aluminum panels/parapet cap (review/approve)																														
CURTAIN WALL MATERIAL PROCUREMENT		325	20-Jul-22	30-Oct-23	158	CURTAIN WALL MATERIAL PROCUREMENT																														
PRC-1450	Curtain Wall - Release/Procure new facade dies	30	20-Jul-22	30-Aug-22	65	Curtain Wall - Release/Procure new facade dies																														
PRC-1490	Curtain Wall - Release for Curtain Wall extrusion procurement	1	31-Aug-22	31-Aug-22	65	Curtain Wall - Release for Curtain Wall extrusion procurement																														
PRC-1510	Curtain Wall - Procure/Extrude CW and PW framing materials	70	07-Sep-22	15-Dec-22	65	Curtain Wall - Procure/Extrude CW and PW framing materials																														
PRC-1500	Curtain Wall - Fabrication Drawings	75	31-Oct-22	20-Feb-23	67	Curtain Wall - Fabrication Drawings																														
PRC-1520	Curtain Wall - Release/Procure Insulation	125	29-Nov-22	29-May-23	78	Curtain Wall - Release/Procure Insulation																														
PRC-1840	Curtain Wall - Paint/Fabricate CW/PW framing & ocean freight	125	16-Dec-22	15-Jun-23	65	Curtain Wall - Paint/Fabricate CW/PW framing & ocean freight																														
PRC-1670	Curtain Wall - Order Glass	1	05-Jan-23	05-Jan-23	67	Curtain Wall - Order Glass																														
PRC-1680	Curtain Wall - Fabricate and ship glass	110	06-Jan-23	13-Jun-23	67	Curtain Wall - Fabricate and ship glass																														
PRC-2030	Curtain Wall - Release / Fabricate Nanawall	150	30-Mar-23	27-Oct-23	158	Curtain Wall - Release / Fabricate Nanawall																														
PRC-2040	Curtain Wall - Release Aluminum Storefront Doors	100	30-Mar-23	18-Aug-23	55	Curtain Wall - Release Aluminum Storefront Doors																														
PRC-2050	Curtain Wall - Release Auto Operators	55	13-Apr-23	29-Jun-23	168	Curtain Wall - Release Auto Operators																														
PRC-2060	Curtain Wall - Release /Fabricate Louvers	60	03-May-23	27-Jul-23	55	Curtain Wall - Release /Fabricate Louvers																														
PRC-2110	Curtain Wall - Assemble and glaze panels	50	16-Jun-23	25-Aug-23	65	Curtain Wall - Assemble and glaze panels																														
PRC-2090	Curtain Wall - Receive Auto Operators	5	30-Jun-23	07-Jul-23	168	Curtain Wall - Receive Auto Operators																														
PRC-2100	Curtain Wall - Deliver Louvers	5	28-Jul-23	03-Aug-23	55	Curtain Wall - Deliver Louvers																														
PRC-2120	Curtain Wall - Deliver Storefront Doors	5	21-Aug-23	25-Aug-23	133	Curtain Wall - Deliver Storefront Doors																														
PRC-2130	Curtain Wall - Deliver Nanawall	1	30-Oct-23	30-Oct-23	158	Curtain Wall - Deliver Nanawall																														
WINDOW WASHING		118	07-Jan-22 A	18-May-22 A		WINDOW WASHING																														
PRC-1100	Window Washing - Assemble Bid Package	15	07-Jan-22 A	22-Feb-22 A		Window Washing - Assemble Bid Package																														
PRC-1190	Window Washing - District Rev & Approve	3	23-Feb-22 A	28-Feb-22 A		Window Washing - District Rev & Approve																														
PRC-1200	Window Washing - Bidding	17	28-Feb-22 A	06-Apr-22 A		Window Washing - Bidding																														
PRC-1220	Window Washing - Review and Recommend Award	10	06-Apr-22 A	12-Apr-22 A		Window Washing - Review and Recommend Award																														
PRC-1230	Window Washing - District Approval of Award	5	06-Apr-22 A	12-Apr-22 A		Window Washing - District Approval of Award																														
PRC-1240	Window Washing - XL Release Early Subcontractors	5	12-Apr-22 A	18-May-22 A		Window Washing - XL Release Early Subcontractors																														
PRC-1250	Window Washing - Issue NTP / Funding Release For Lead Procurement - Early Subcontractors	1	12-Apr-22 A	12-Apr-22 A		Window Washing - Issue NTP / Funding Release For Lead Procurement - Early Subcontractors																														
ELEVATOR		153	12-Jan-22 A	18-Aug-22	212	ELEVATOR																														
PRC-1120	Elevator - Assemble Bid Package	15	12-Jan-22 A	15-Jul-22	212	Elevator - Assemble Bid Package, Elevator - Assemble Bid Package																														
PRC-1260	Elevator - District Rev & Approve	5	14-Jul-22	20-Jul-22	212	Elevator - District Rev & Approve																														
PRC-1350	Elevator - Bidding	0	21-Jul-22	21-Jul-22	212	Elevator - Bidding																														
PRC-1360	Elevator - Review and Recommend Award	10	21-Jul-22	03-Aug-22	212	Elevator - Review and Recommend Award																														
PRC-1380	Elevator - District Approval of Award	5	04-Aug-22	10-Aug-22	212	Elevator - District Approval of Award																														
PRC-1390	Elevator - Issue NTP / Funding Release For Lead Procurement - Early Subcontractors	1	11-Aug-22	11-Aug-22	212	Elevator - Issue NTP / Funding Release For Lead Procurement - Early Subcontractors																														
PRC-1400	Elevator - XL Release Early Subcontractors	5	12-Aug-22	18-Aug-22	212	Elevator - XL Release Early Subcontractors																														
MEP		302	20-Jul-22	27-Sep-23	82	MEP																														
MECHANICAL		252	20-Jul-22	19-Jul-23	132	MECHANICAL																														
MECHANICAL SUBMITTALS		92	20-Jul-22	29-Nov-22	240	MECHANICAL SUBMITTALS																														
PRC-1550	AHU Submittal	20	20-Jul-22	16-Aug-22	204	AHU Submittal																														
PRC-1560	ASHPs Submittal	20	20-Jul-22	16-Aug-22	219	ASHPs Submittal																														
PRC-1570	SS/VRFs Submittal	20	31-Oct-22	29-Nov-22	230	SS/VRFs Submittal																														
PRC-1580	Fans Submittal	20	31-Oct-22	29-Nov-22	210	Fans Submittal																														
PRC-1590	Pumps Submittal	20	31-Oct-22	29-Nov-22	132	Pumps Submittal																														
PRC-1600	Suction Diffusers Submittal	20	31-Oct-22	29-Nov-22	170	Suction Diffusers Submittal																														

█ Remaining Level of Effort
 █ Actual Work
 █ Critical Remaining Work
█ Actual Level of Effort
 █ Remaining Work
 ◆ ◆ Milestone

PCCD Berkeley City College Milvia St New Bldg - 1



Activity ID	Activity Name	Original Duration	Start	Finish	Total Float	2023												2024												2025						
						2023												2024												2025						
						Jul	Aug	Sep	Oct	Nov	Dec	Jan	Feb	Mar	Apr	May	Jun	Jul	Aug	Sep	Oct	Nov	Dec	Jan	Feb	Mar	Apr	May	Jun	Jul	Aug	Sep	Oct	Nov	Dec	Jan
ELECTRICAL						▼ ELECTRICAL ■ Secondary Conduit Installation																														
UGU-2000	Secondary Conduit Installation	5	08-Mar-23	14-Mar-23	52																															
SUBSTRUCTURES						▼ SUBSTRUCTURES ■ West Side Formwork																														
SURVEY						▼ SURVEY ■ Survey Building & GPS Coordinates																														
UGS-1000	Survey Building & GPS Coordinates	1	07-Mar-23	07-Mar-23	52																															
MAT SLAB						▼ MAT SLAB ■ Rebar																														
UGS-1100	West Side Formwork	5	15-Mar-23	21-Mar-23	52																															
UGS-1200	Rebar	5	07-Apr-23	13-Apr-23	40																															
UGS-1300	Install Crane and Placement System Anchors	5	14-Apr-23	20-Apr-23	43																															
UGS-1400	Overhead Formwork	5	14-Apr-23	20-Apr-23	40																															
UGS-1500	Form Inspection	3	21-Apr-23	25-Apr-23	40																															
UGS-1600	Concrete Placement and Cure	7	26-Apr-23	04-May-23	40																															
SUBSTRUCTURES COMPLETE						▼ SUBSTRUCTURES COMPLETE ◆ Substructures Complete:																														
UGS-1700	Substructures Complete	0	04-May-23	04-May-23	302																															
SUPER STRUCTURE						▼ SUPER STRUCTURE ▼ CONCRETE DECKS																														
CONCRETE DECKS						▼ 2nd Floor Deck																														
2nd Floor Deck																																				
SSC-2000	Layout Vertical Concrete - Level 2	1	27-Apr-23	27-Apr-23	40																															
SSC-2010	Set Vertical Rebar Cages - Level 2	1	27-Apr-23	27-Apr-23	40																															
SSC-2020	Set Vertical Formwork - Level 2	1	28-Apr-23	28-Apr-23	40																															
SSC-2030	Vertical Inspection - Level 2	1	28-Apr-23	28-Apr-23	40																															
SSC-2040	Vertical Concrete Placement - Level 2	1	01-May-23	01-May-23	40																															
SSC-2050	Strip Vertical Formwork - Level 2	1	02-May-23	02-May-23	40																															
SSC-2060	Install Temporary Decking (Incl. Dropcaps) - Level 2	2	02-May-23	03-May-23	40																															
SSC-2070	Install Rebar and Tendons - Level 2	2	04-May-23	05-May-23	40																															
SSC-2080	Layout MEPFS Penetrations, Pathways, and Hangers - Level 2	1	04-May-23	04-May-23	40																															
SSC-2090	Install MEPFS Penetrations, Pathways and Hangers - Level 2	1	12-May-23	12-May-23	35																															
SSC-2100	Horizontal Inspection - Level 2	1	12-May-23	12-May-23	35																															
SSC-2110	Horizontal Concrete Placement - Level 2	1	15-May-23	15-May-23	35																															
SSC-2120	Stress Tendons - Level 2	1	16-May-23	16-May-23	35																															
SSC-2130	Strip Temporary Decking - Level 2	1	17-May-23	17-May-23	73																															
SSC-2140	Install Reshore - Level 2	1	18-May-23	18-May-23	109																															
SSC-2150	2nd Floor Deck Complete	0	18-May-23	18-May-23	109																															
3rd Floor Deck						▼ 3rd Floor Deck																														
SSC-3000	Layout Vertical Concrete - Level 3	1	17-May-23	17-May-23	35																															
SSC-3010	Set Vertical Rebar Cages - Level 3	1	17-May-23	17-May-23	35																															
SSC-3020	Set Vertical Formwork - Level 3	1	18-May-23	18-May-23	35																															
SSC-3030	Vertical Inspection - Level 3	1	18-May-23	18-May-23	35																															
SSC-3040	Vertical Concrete Placement - Level 3	1	19-May-23	19-May-23	35																															
SSC-3050	Strip Vertical Formwork - Level 3	1	23-May-23	23-May-23	35																															
SSC-3060	Install Temporary Decking (Incl. Dropcaps) - Level 3	2	23-May-23	24-May-23	35																															
SSC-3070	Install Rebar and Tendons - Level 3	2	25-May-23	26-May-23	35																															
SSC-3080	Layout MEPFS Penetrations, Pathways, and Hangers - Level 3	1	25-May-23	25-May-23	35																															
SSC-3090	Install MEPFS Penetrations, Pathways and Hangers - Level 3	1	25-May-23	25-May-23	36																															
SSC-3100	Horizontal Inspection - Level 3	1	26-May-23	26-May-23	35																															
SSC-3110	Horizontal Concrete Placement - Level 3	1	29-May-23	29-May-23	35																															
SSC-3120	Stress Tendons - Level 3	1	30-May-23	30-May-23	35																															
SSC-3130	Strip Temporary Decking - Level 3	1	31-May-23	31-May-23	100																															

■ Remaining Level of Effort
 ■ Actual Work
 ■ Critical Remaining Work
■ Actual Level of Effort
 ■ Remaining Work
 ◆ ◆ Milestone

PCCD Berkeley City College Milvia St New Bldg - 1



Activity ID	Activity Name	Original Duration	Start	Finish	Total Float	2023												2024												2025					
						2023												2024												2025					
						Jul	Aug	Sep	Oct	Nov	Dec	Jan	Feb	Mar	Apr	May	Jun	Jul	Aug	Sep	Oct	Nov	Dec	Jan	Feb	Mar	Apr	May	Jun	Jul	Aug	Sep	Oct	Nov	Dec
LEVEL 4						LEVEL 4																													
OVERHEAD						OVERHEAD																													
IN-R4000	Layout	2	25-Jul-23	26-Jul-23	44	Layout																													
IN-R4010	Install Core/Priority Walls	5	27-Jul-23	02-Aug-23	48	Install Core/Priority Walls																													
IN-R4020	Install MEPFS Hangers	8	16-Aug-23	25-Aug-23	135	Install MEPFS Hangers																													
IN-R4030	Install HVAC Mains	8	16-Aug-23	25-Aug-23	135	Install HVAC Mains																													
IN-R4040	Install HVAC Piping	8	16-Aug-23	25-Aug-23	135	Install HVAC Piping																													
IN-R4050	Install Plumbing/FS Piping	8	16-Aug-23	25-Aug-23	135	Install Plumbing/FS Piping																													
IN-R4060	Install Electrical	8	25-Oct-23	03-Nov-23	85	Install Electrical																													
IN-R4070	Rough Overhead Complete	0		03-Nov-23	88	Rough Overhead Complete																													
WALLS						WALLS																													
IN-R4080	Frame Walls	5	06-Nov-23	10-Nov-23	88	Frame Walls																													
IN-R4090	Rough-In Wall MEP's	5	13-Nov-23	17-Nov-23	88	Rough-In Wall MEP's																													
IN-R4120	Inspection with Corrections	3	20-Nov-23	22-Nov-23	88	Inspection with Corrections																													
CEILINGS						CEILINGS																													
IN-R4100	Frame Hardlids, Soffits, and Ceilings	5	13-Nov-23	17-Nov-23	88	Frame Hardlids, Soffits, and Ceilings																													
IN-R4110	Install Rough MEPFS	5	16-Nov-23	22-Nov-23	88	Install Rough MEPFS																													
FLOORS						FLOORS																													
IN-R4130	Rough Polish	1	27-Nov-23	27-Nov-23	88	Rough Polish																													
LEVEL 5						LEVEL 5																													
OVERHEAD						OVERHEAD																													
IN-R5000	Layout	2	27-Jul-23	28-Jul-23	44	Layout																													
IN-R5010	Install Core/Priority Walls	5	31-Jul-23	04-Aug-23	46	Install Core/Priority Walls																													
IN-R5020	Install MEPFS Hangers	7	28-Aug-23	05-Sep-23	135	Install MEPFS Hangers																													
IN-R5030	Install HVAC Mains	7	28-Aug-23	05-Sep-23	135	Install HVAC Mains																													
IN-R5040	Install HVAC Piping	7	28-Aug-23	05-Sep-23	135	Install HVAC Piping																													
IN-R5050	Install Plumbing/FS Piping	7	28-Aug-23	05-Sep-23	135	Install Plumbing/FS Piping																													
IN-R5060	Install Electrical	7	06-Nov-23	14-Nov-23	85	Install Electrical																													
IN-R5070	Rough Overhead Complete	0		14-Nov-23	86	Rough Overhead Complete																													
WALLS						WALLS																													
IN-R5080	Frame Walls	5	15-Nov-23	21-Nov-23	86	Frame Walls																													
IN-R5090	Rough-In Wall MEP's	5	22-Nov-23	30-Nov-23	86	Rough-In Wall MEP's																													
IN-R5120	Inspection with Corrections	3	01-Dec-23	05-Dec-23	86	Inspection with Corrections																													
CEILINGS						CEILINGS																													
IN-R5100	Frame Hardlids, Soffits, and Ceilings	5	22-Nov-23	30-Nov-23	86	Frame Hardlids, Soffits, and Ceilings																													
IN-R5110	Install Rough MEPFS	5	29-Nov-23	05-Dec-23	86	Install Rough MEPFS																													
FLOORS						FLOORS																													
IN-R5130	Rough Polish	1	06-Dec-23	06-Dec-23	86	Rough Polish																													
LEVEL 6						LEVEL 6																													
OVERHEAD						OVERHEAD																													
IN-R6000	Layout	2	31-Jul-23	01-Aug-23	44	Layout																													
IN-R6010	Install Core/Priority Walls	5	02-Aug-23	08-Aug-23	44	Install Core/Priority Walls																													
IN-R6020	Install MEPFS Hangers	6	06-Sep-23	13-Sep-23	135	Install MEPFS Hangers																													
IN-R6030	Install HVAC Mains	6	06-Sep-23	13-Sep-23	135	Install HVAC Mains																													
IN-R6040	Install HVAC Piping	6	06-Sep-23	13-Sep-23	135	Install HVAC Piping																													
IN-R6050	Install Plumbing/FS Piping	6	06-Sep-23	13-Sep-23	135	Install Plumbing/FS Piping																													
IN-R6060	Install Electrical	6	15-Nov-23	22-Nov-23	85	Install Electrical																													
IN-R6070	Rough Overhead Complete	0		22-Nov-23	85	Rough Overhead Complete																													

█ Remaining Level of Effort
 █ Actual Work
 █ Critical Remaining Work
█ Actual Level of Effort
 █ Remaining Work
 ◆ ◆ Milestone

PCCD Berkeley City College Milvia St New Bldg - 1



Activity ID	Activity Name	Original Duration	Start	Finish	Total Float	2023												2024												2025
						2023												2024												2025
						Jul	Aug	Sep	Oct	Nov	Dec	Jan	Feb	Mar	Apr	May	Jun	Jul	Aug	Sep	Oct	Nov	Dec	Jan	Feb	Mar	Apr	May	Jun	Jul
SECURITY / INTRUSION CONTROL																														
STC-1040	ERRC Devices Installed	1	01-May-24	01-May-24	90																									
STC-1060	ERRC System Soft Start Up and Program Dump	1	02-May-24	02-May-24	90																									
STC-1120	ERRC Devices Programmed, Tested and Device Verification	1	03-May-24	03-May-24	90																									
STC-1140	ERRC Functional Testing w/ XL	1	06-May-24	06-May-24	90																									
STC-1180	ERRC System Startup and Testing Complete	0		06-May-24	90																									
FIRE ALARM																														
STC-1090	Fire Alarm System Soft Start Up and Program Dump	2	01-May-24	02-May-24	73																									
STC-1150	FA Devices Programmed, Tested and Device Verification	10	03-May-24	16-May-24	73																									
STC-1300	Fire Alarm Device Verification w/ XL	3	17-May-24	22-May-24	73																									
STC-1400	Elevator Recall	2	10-Jun-24	11-Jun-24	61																									
STC-1410	Fire Sprinkler Tamper and Flows	1	10-Jun-24	10-Jun-24	61																									
STC-1440	Fire Alarm Functional Testing w/ XL	4	12-Jun-24	17-Jun-24	61																									
STC-1470	Fire Alarm and Suppression Systems Startup and Testing Complete	0		17-Jun-24	61																									
LIGHTING CONTROL																														
STC-1080	Lighting and Plugs Energized & Tested	5	01-May-24	07-May-24	43																									
STC-1210	Lighting Control SUV	3	08-May-24	10-May-24	43																									
STC-1260	Lighting Control Programming	5	13-May-24	17-May-24	43																									
STC-1310	Lighting Control Troubleshooting	3	21-May-24	23-May-24	43																									
STC-1330	Lighting Control Testing	3	24-May-24	28-May-24	43																									
STC-1350	Lighting Control Startup and Testing Complete	0		28-May-24	75																									
MECHANICAL/HVAC																														
BUILDING MANAGEMENT SYSTEM																														
EQUIPMENT STARTUP																														
HVAC EQUIPMENT STARTUP																														
STC-1070	Startup HVAC Equipment (All)	10	01-May-24	14-May-24	35																									
TEST AND BALANCE																														
HVAC TAB																														
STC-1280	Controls checkout with Air On	5	15-May-24	22-May-24	35																									
STC-1290	Controls checkout with Air Off	5	15-May-24	22-May-24	35																									
STC-1320	Test and Balance	7	23-May-24	31-May-24	35																									
TAB ITEMS																														
STC-1370	Fan Finals	5	03-Jun-24	07-Jun-24	35																									
STC-1420	Generate and Submit TAB Report	10	10-Jun-24	21-Jun-24	35																									
STC-1510	TAB Approved	5	24-Jun-24	28-Jun-24	35																									
PLUMBING																														
DOMESTIC WATER																														
DOMESTIC WATER EQUIPMENT STARTUP																														
STC-1110	Domestic Hot Water Recur Pump SUV	1	01-May-24	01-May-24	54																									
STC-1200	Domestic Hot Water Boiler SU	1	08-May-24	08-May-24	54																									
DOMESTIC WATER TAB																														
STC-1130	Balance Circuit Setters	1	02-May-24	02-May-24	54																									
DOMESTIC WATER FLUSH/CHLORINATION																														
STC-1170	DCW and DHW Chlorination	3	03-May-24	07-May-24	54																									
COMMISSIONING																														
FUNCTIONAL PERFORMANCE TESTING																														
STC-1000	Pre-Functional Testing	10	29-Feb-24	13-Mar-24	84																									
STC-1010	VAV FPTs	5	14-Mar-24	20-Mar-24	84																									

█ Remaining Level of Effort
 █ Actual Work
 █ Critical Remaining Work
█ Actual Level of Effort
 █ Remaining Work
 ◆ ◆ Milestone

