

BID ADDENDUM #6  
08.10.2022

**NARRATIVE OF CHANGE**

SHEET NO.	DESCRIPTION
A-200	1. Plaster joint location/orientation clarifications 2. Plaster finish type added
A-201	1. Plaster joint clarifications 2. Plaster finish types added 3. Accent paint alternate extents on North elevation 4. Added new elevation C4 for the exposed plaster east side of the stair tower
AC110	1. Soffit plaster finish type added 2. Bid alternate soffit finish added
A-601	1. Select hardware group revisions 2. Card Reader comments correction, select doors
A-610	1. "CPL1" & "PT10" added to Ceiling finish legend to describe exterior soffit plaster finish & bid alternate 2. "CPL1" added to Wall finish legend to describe exterior wall plaster finish 3. "PT8" accent color added to south stair tower north wall (in case mural this wall doesn't occur) 4. "PT9" accent color added as bid alternate over select areas of cement plaster on north elevation
A-611	1. South stair tower north wall changed from "C3" to "PT8"
A-612	1. South stair tower north wall changed from "C3" to "PT8"
A-613	1. South stair tower north wall changed from "C3" to "PT8"
<b>Specifications</b>	
08 71 00	Revised door hardware specification. Revise hardware group changes (identified in <b>BOLD</b> ) include Group No. 08, 35, 37, 40, 44, 45, 46, 47.

## **Peralta Community College District: Berkeley City College - West**

Project #4668

Memo - Addendum #6

August 10, 2022

The following modifications have been made to the bidding documents:

1) Revised Drawing:

- a. Folder Name: 11 – Addendum No. 06 (TI Trades)
- b. File Name: 220810 - BCC West\_BidAddendum6\_Dwgs.pdf

2) Revised Specifications:

- a. Folder Name: 11 – Addendum No. 06 (TI Trades)
- b. File Name: 08 71 00 Door Hardware\_vBidAdd6.pdf

3) Narrative of Changes:

- a. Folder Name: 11 – Addendum No. 06 (TI Trades)
- b. File Name: 08102022\_Bid Addendum 6 Narrative of Changes.pdf

4) RFI Log:

Please note there is an update RFI log with additional questions posted past the RFI date. Please incorporate these scope clarifications into your proposal.

- a. Folder Name: 11 – Addendum No. 06 (TI Trades)
- b. File Name: BCC-West\_ Bid RFI Log - TI Trades Updated\_081022.pdf

PART 1 - GENERAL

1.1 RELATED DOCUMENTS

- A. Drawings and general provisions of Contract, including General and Supplementary Conditions of Division 1 Specification Sections, apply to this Section.

1.2 SUMMARY

- A. This Section includes items known commercially as finish or door hardware that are required for swing, sliding, and folding doors, except special types of unique hardware specified in the same sections as the doors and door frames on which they are installed.
- B. This Section includes the following, but is not necessarily limited to:
  - 1. Door Hardware, including electric hardware.
  - 2. Storefront and Entrance door hardware.
  - 3. Low-energy door operators plus sensors and actuators.
  - 4. Thresholds, gasketing and weather-stripping.
  - 5. Door silencers or mutes.

1.3 REFERENCES (USE DATE OF STANDARD IN EFFECT AS OF BID DATE.)

- A. 2019 California Building Code, CCR, Title 24.
- B. BHMA – Builders' Hardware Manufacturers Association
- C. CCR – California Code of Regulations, Title 24, Part 2, California State Accessibility Standards.
- D. DHI – Door and Hardware Institute
- E. NFPA - National Fire Protection Association.
  - 1. NFPA 80 - Fire Doors and Other Opening Protectives
  - 2. NFPA 105 - Smoke and Draft Control Door Assemblies
- F. UL - Underwriters Laboratories.
  - 1. UL 10C - Fire Tests of Door Assemblies
  - 2. UL 305 - Panic Hardware
- G. WHI - Warnock Hersey Incorporated
- H. SDI - Steel Door Institute

1.4 SUBMITTALS & SUBSTITUTIONS

- A. General: Submit in accordance with Conditions of the Contract and Division 1 Specification sections.
- B. Submit product data (catalog cuts) including manufacturers' technical product information for each item of door hardware, installation instructions, maintenance of operating parts and finish, and other information necessary to show compliance with requirements.
- C. Submit six (6) copies of schedule organized vertically into "Hardware Sets" with index of doors and headings, indicating complete designations of every item required for each door or opening. Include following information:
  - 1. Include a Cover Sheet with;
    - a. Job Name, location, telephone number.
    - b. Architects name, location and telephone number.
    - c. Contractors name, location, telephone number and job number.
    - d. Suppliers name, location, telephone number and job number.
    - e. Hardware consultant's name, location and telephone number.
  - 2. Job Index information included;
    - a. Numerical door number index including; door number, hardware heading number and page number.
    - b. Complete keying information (referred to DHI hand-book "Keying Systems and Nomenclature"). Provision should be made in the schedule to provide keying information when available; if it is not available at the time the preliminary schedule is submitted.
    - c. Manufacturers' names and abbreviations for all materials.
    - d. Explanation of abbreviations, symbols, and codes used in the schedule.
    - e. Mounting locations for hardware.
    - f. Clarification statements or questions.
    - g. Catalog cuts and manufacturer's technical data and instructions.
  - 3. Vertical schedule format sample:

Heading Number 1 (Hardware group or set number – HW -1)					
			(a) 1 Single Door #1 - Exterior from Corridor 101	(b) 90°	(c) RH
			(d) 3' 0"x7' 0" x 1-3/4" x (e) 20 Minute (f) WD x HM		
(g) 1	(h)	(i) ea	(j) Hinges - (k) 5BB1HW 4.5 x 4.5 NRP (l) ½ TMS	(m) 626	(n) IVE

2	6A A	1 ea	Lockset - ND50PD x RHO x RH x 10-025 x JTMS	626	SCH
---	---------	------	--	-----	-----

(a) - Single or pair with opening number and location. (b) - Degree of opening (c) - Hand of door(s) (d) - Door and frame dimensions and door thickness. (e) - Label requirements if any. (f) - Door by frame material. (g) - (Optional) Hardware item line #. (h) - Keyset Symbol. (i) - Quantity. (j) - Product description. (k) - Product Number. (l) - Fastenings and other pertinent information. (m) - Hardware finish codes per ANSI A156.18. (n) - Manufacture abbreviation.

- D. Make substitution requests in accordance with Division 1. Substitution requests must be made prior to bid date. Include product data and indicate benefit to the project. Furnish samples of any proposed substitution.
- E. Wiring Diagrams: Provide product data and wiring and riser diagrams for all electrical products listed in the Hardware Schedule portion of this section.
- F. Keying Schedule: Submit separate detailed schedule indicating clearly how the Owner's final instructions on keying of locks has been fulfilled.
- G. Templates for doors, frames, and other work specified to be factory prepared for the installation of door hardware. Check shop drawings of other work to confirm that adequate provisions are made for locating and installing door hardware to comply with indicated requirements.
- H. Furnish as-built/as-installed schedule with close-out documents, including keying schedule and transcript, wiring/riser diagrams, manufacturers' installation and adjustment and maintenance information.
- I. Fire Door Assembly Testing: Submit a written record of each fire door assembly to the Owner to be made available to the Authority Having Jurisdiction (AHJ) for future building inspections.
- J. LEED Certification Points: Submit information and certifications necessary to achieve maximum points for LEED certification; coordinate and cooperate with Owner and Architect in providing information necessary for required LEED rating.

1.5 QUALITY ASSURANCE

- A. Obtain each type of hardware (latch and lock sets, hinges, closers, exit devices, etc.) from a single manufacturer.
- B. Supplier Qualifications: A recognized architectural door hardware supplier, with warehousing facilities in the project's vicinity, that has a record of successful in-service performance for supplying door hardware similar in quantity, type, and quality to that indicated for this project and that employs an experienced architectural hardware consultant (AHC) who is available to Owner, Architect, and Contractor, at reasonable times during the course of the Work, for consultation.

1. Responsible for detailing, scheduling and ordering of finish hardware.
  2. Meet with Owner to finalize keying requirements and to obtain final instructions in writing. To maintain the integrity of patented key systems provide a letter of authorization from the specified manufacturer indicating that supplier has authorization to purchase the key system directly from the manufacturer.
  3. Stock parts for products supplied and are capable of repairing and replacing hardware items found defective within warranty periods.
- C. Hardware Installer: Company specializing in the installation of commercial door hardware with five years documented experience.
- D. Fire-Rated Openings: Provide door hardware for fire-rated openings that complies with NFPA Standard No. 80 and requirements of authorities having jurisdiction. Provide only items of door hardware that are listed and tested by UL or Warnock Hersey for given type/size opening and degree of label. Provide proper latching hardware, door closers, approved-bearing hinges and seals whether listed in the Hardware Schedule or not.
1. Where emergency exit devices are required on fire-rated doors, (with supplementary marking on doors' UL labels indicating "Fire Door to be Equipped with Fire Exit Hardware") provide UL label on exit devices indicating "Fire Exit Hardware".
- E. Exit Doors: Operable from inside with single motion without the use of a key or special knowledge or effort.
- F. Product packaging to be labelled in compliance with CA Prop 65, Safe Drinking Water and Toxic Enforcement Act of 1986.
- 1.6 DELIVERY, STORAGE AND HANDLING
- A. Coordinate delivery of packaged hardware items to the appropriate locations (shop or field) for installation.
  - B. Hardware items shall be individually packaged in manufacturers' original containers, complete with proper fasteners. Clearly mark packages on outside to indicate contents and locations in hardware schedule and in work.
  - C. Provide locked storage area for hardware, protect from moisture, sunlight, paint, chemicals, etc.
  - D. Contractor to inventory door hardware jointly with representatives of hardware supplier and hardware installer until each all are satisfied that count is correct.
- 1.7 WARRANTY
- A. Provide warranties of respective manufacturers' regular terms of sale from day of final acceptance as follows:
    1. Locksets: "ND" Ten (10) years.

2. Electronic: One (1) year.
3. Closers: Thirty (30) years--except electronic closers shall be two (2) years.
4. Exit devices: Three (3) years.
5. All other hardware: Two (2) years.

#### 1.8 MAINTENANCE

- A. Maintenance Tools and Instructions: Furnish a complete set of specialized tools and maintenance instructions as needed for Owner's continued adjustment, maintenance, and removal and replacement of door hardware.

#### 1.9 PRE-INSTALLATION CONFERENCE

- A. Convene a pre-installation conference at least one week prior to beginning work of this section.
- B. Attendance: Architect, Construction Manager, Contractor, Security Contractor, Hardware Supplier, Installer, Key Owner Personnel, and Project Inspector.
- C. Agenda: Review hardware schedule, products, installation procedures and coordination required with related work. Review Owner's keying standards.

### PART 2 - PRODUCTS

#### 2.1 MANUFACTURERS

<u>Item</u>	<u>Manufacturer</u>	<u>Acceptable Substitutes</u>
Hinges	Ives	None-Owner Standard
Locks, Latches & Cylinders	Schlage	None-Owner Standard
Exit Devices	Von Duprin	None-Owner Standard
Closers	LCN	None-Owner Standard
Auto Operators	LCN	None-Owner Standard
Push, Pulls & Protection Plates	Ives	None-Owner Standard
Flush Bolts	Ives	None-Owner Standard
Dust Proof Strikes	Ives	None-Owner Standard
Coordinators	Ives	None-Owner Standard
Stops	Ives	None-Owner Standard

Overhead Stops	Glynn-Johnson	None-Owner Standard
Thresholds	Zero	None-Owner Standard
Seals & Bottoms	Zero	None-Owner Standard

#### MATERIALS

- A. Hinges: Exterior out-swinging door butts shall be non-ferrous material and shall have stainless steel hinge pins. All doors to have non-rising pins.
- Hinges shall be sized in accordance with the following:
    - Height:
      - Doors up to 42" wide: 4-1/2 inches.
      - Doors 43" to 48" wide: 5 inches.
    - Width: Sufficient to clear frame and trim when door swings 180 degrees.
    - Number of Hinges: Furnish 3 hinges per leaf to 7'-5" in height. Add one for each additional 2 feet in height.
  - Furnish non-removable pins (NRP) at all exterior out-swing doors and interior key lock doors with reverse bevels.
- B. Continuous Hinges: As manufactured by Ives, an Allegion Company. UL rated as required.
- C. Heavy Duty Cylindrical Locks and Latches: Schlage "ND" Series as scheduled with "Rhodes" design, fastened with through-bolts and threaded chassis hubs.
- Provide cylindrical locksets exceeding the ANSI/BHMA A156.2 Grade 1 performance standards for strength, security, and durability in the categories below:
    - Abusive Locked Lever Torque Test – minimum 3,100 inch-pounds without gaining access
    - Offset lever pull – minimum 1,600 foot pounds without gaining access
    - Vertical lever impact – minimum 100 impacts without gaining access
  - Cycle life - tested to minimum 16 million cycles per ANSI/BHMA A156.2 Cycle Test with no visible lever sag or use of performance aids such as set screws or spacers
  - UL 10C for 4'-0" x 10'-0" 3-hour fire door.
  - Cylinders: Refer to "KEYING" article, herein.
  - Provide solid steel anti-rotation through bolts and posts to control excessive rotation of lever.
  - Provide lockset that allows lock function to be changed to over twenty other common functions by swapping easily accessible parts.
  - Provide locks with standard 2-3/4 inches (70 mm) backset, unless noted otherwise, with 1/2 inch latch throw capable of UL listing of 3 hours on a 4' x 10' opening. Provide proper latch throw for UL listing at pairs.



8. Provide locksets with separate anti-rotation thru-bolts, and no exposed screws.
9. Provide independently operating levers with two external return spring cassettes mounted under roses to prevent lever sag.
10. Provide standard ASA strikes unless extended lip strikes are necessary to protect trim.
11. Provide wired electrified options as scheduled in the hardware sets.
  - a. 12 through 24 volt DC operating capability, auto-detecting
  - b. Selectable EL (fail safe)/EU (fail secure) operating mode via switch on chassis
  - c. 0.230A (230mA) maximum current draw
  - d. 0.010A (10mA) holding current
  - e. Modular / "plug in" request to exit switch
12. Lever Trim: Solid cast levers without plastic inserts, and wrought roses on both sides.

D. Exit devices: Von Duprin as scheduled.

1. Provide certificate by independent testing laboratory that device has completed over 1,000,000 cycles and can still meet ANSI/BHMA A156.3 - 2001 standards.
2. All internal parts shall be of cold-rolled steel with zinc dichromate coating.
3. Mechanism case shall have an average thickness of .140".
4. Compression spring engineering.
5. Non-handed basic device design with center case interchangeable with all functions.
6. All devices shall have quiet return fluid dampeners.
7. All latchbolts shall be deadlocking with  $\frac{3}{4}$ " throw and have a self-lubricating coating to reduce friction and wear.
8. Device shall bear UL label for fire and or panic as may be required.
9. All surface strikes shall be roller type and utilize a plate underneath to prevent movement.
10. Lever Trim: "Breakaway" design, forged brass or bronze escutcheon with a minimum of .130" thickness, match lockset lever design.
11. Removable Mullions: Removable with single turn of building key. Securely reinstalled without need for key.
12. Furnish glass bead kits for vision lites where required.
13. All Exit Devices to be sex-bolted to the doors.
14. Panic Hardware shall comply with CBC Section 11B.404.2.7 and shall be mounted between 34" and 44" above the finished floor surface.
  - a. Provide exit devices UL certified to meet maximum 5 pound requirements according to the California Building Code section 11B-309.4, and UL listed for Panic Exterior Fire Exit Hardware.

E. Closers: LCN as scheduled. Place closers inside building, stairs, room, etc.

1. Door closer cylinders shall be of high strength cast iron construction with double heat treated pinion shaft to provide low wear operating capabilities of internal

- parts throughout the life of the installation. All door closers shall be tested to ANSI/BHMA A156.4 test requirements by a BHMA certified testing laboratory. A written certification showing successful completion of a minimum of 10,000,000 cycles must be provided.
2. All door closers shall be fully hydraulic and have full rack and pinion action with a shaft diameter of a minimum of 11/16 inch and piston diameter of 1 inch to ensure longevity and durability under all closer applications.
  3. All parallel arm closers shall incorporate one piece solid forged steel arms with bronze bushings. 1-9/16" steel stud shoulder bolts, shall be incorporated in regular arms, hold-open arms, arms with hold open and stop built in. All other closers to have forged steel main arms for strength, durability, and aesthetics for versatility of trim accommodation, high strength and long life.
  4. All parallel arm closers so detailed shall provide advanced backcheck for doors subject to severe abuse or extreme wind conditions. This advanced backcheck shall be located to begin cushioning the opening swing of the door at approximately 45 degrees. The intensity of the backcheck shall be fully adjustable by tamper resistant non-critical screw valve.
  5. Closers shall be installed to permit doors to swing 180 degrees.
  6. All closers shall utilize a stable fluid withstanding temperature range of 120 degrees F. to -30 degrees F. without requiring seasonal adjustment of closer speed to properly close the door.
  7. Provide the manufactures drop plates, brackets and spacers as required at narrow head rails and special frame conditions. NO wood plates or spacers will be allowed.
  8. Maximum effort to operate closers shall not exceed 5 lbs., such pull or push effort being applied at right angles to hinged doors. Compensating devices or automatic door operators may be utilized to meet the above standards. When fire doors are required, the maximum effort to operate the closer may be increased but shall not exceed 15 lbs. when specifically approved by fire marshal. All closers shall be adjusted to operate with the minimum amount of opening force and still close and latch the door. These forces do not apply to the force required to retract latch bolts or disengage other devices that hold the door in a closed position. Per 11B-404.2.8.1, door shall take at least 5 seconds to move from an open position of 90 degrees to a position of 12 degrees from the latch jamb.
- F. Electro-Mechanical Automatic Operators - LCN Senior Swing. Refer to Section 08 71 13 – Automatic Door Operators for more information.
1. Requirements:
    - a. Provide low energy automatic operator units that are electro-mechanical design complying with ANSI/BHMA A156.19.
      - 1) Opening: Powered by DC motor working through reduction gears.
      - 2) Closing: Spring force.
      - 3) Manual, hydraulic, or chain drive closers: Not permitted.
      - 4) Operation: Motor is off when door is in closing mode. Door can be manually operated with power on or off without damage to operator. Provide variable adjustments, including opening and closing speed adjustment.
      - 5) Cover: Aluminum.

- b. Provide units with manual off/auto/hold-open switch, push and go function to activate power operator, vestibule interface delay, electric lock delay, hold-open delay adjustable from 2 to 30 seconds, and logic terminal to interface with accessories, mats, and sensors.
  - c. Provide drop plates, brackets, or adapters for arms as required to suit details.
  - d. Provide hard-wired motion sensors and/or actuator switches for operation as specified. Provide weather-resistant actuators at exterior applications.
  - e. Provide complete assemblies of controls, switches, power supplies, relays, and parts/material recommended and approved by manufacturer of automatic operator for each individual leaf. Actuators control both doors simultaneously at pairs. Sequence operation of exterior and vestibule doors with automatic operators to allow ingress or egress through both sets of openings as directed by Architect. Locate actuators, key switches, and other controls as directed by Architect.
    - 1) Actuators to comply with CBC 11B-404.3.5 Controls.
  - f. Provide units with inputs for smoke evacuation doors, where specified, which allow doors to power open upon fire alarm activation and hold open indefinitely or until fire alarm is reset, presence detector input, which prevents closed door from opening or door that is fully opened from closing, hold open toggle input, which allows remote activation for indefinite hold open and close second time input is activated, vestibule inputs, which allow sequencing operation of two units, and SPDT relay for interfacing with latching or locking devices.
- G. Flush Bolts & Dust Proof Strikes: Automatic Flush Bolts shall be of the low operating force design. Utilize the top bolt only model for interior doors where applicable and as permitted by testing procedures.
- 1. Manual flush bolts only permitted on storage or mechanical openings as scheduled.
  - 2. Provide dust proof strikes at openings using bottom bolts.
- H. Door Stops:
- 1. Unless otherwise noted in Hardware Sets, provide floor type with appropriate fasteners. Where wall type cannot be used, provide floor type. If neither can be used, provide overhead type.
  - 2. Do not install floor stops more than four (4) inches from the face of the wall or partition (CBC Section 11B-307).
  - 3. Overhead stops shall be made of stainless steel and non-plastic mechanisms and finished metal end caps. Field-changeable hold-open, friction and stop-only functions.
- I. Protection Plates: Fabricate either kick, armor, or mop plates with four beveled edges. Provide kick plates 10" high and 2" LDW. Sizes of armor and mop plates shall be listed in the Hardware Schedule. Furnish with machine or wood screws of bronze or stainless to match other hardware.

- J. Thresholds: As Scheduled and per details.
  - 1. Thresholds shall not exceed 1/2" in height, with a beveled surface of 1:2 maximum slope.
  - 2. Set thresholds in a full bed of butyl-rubber or polyisobutylene mastic sealant complying with requirements in Division 7 "Thermal and Moisture Protection".
  - 3. Use 1/4" fasteners, red-head flat-head sleeve anchors (SS/FHSL).
  - 4. Thresholds shall comply with CBC Section 11B-404.2.5.
  
- K. Seals: Provide silicone gasket at all rated and exterior doors.
  - 1. Fire-rated Doors, Resilient Seals: UL10C Classified complies with NFPA 80 & NFPA 252. Coordinate with selected door manufacturers' and selected frame manufacturers' requirements.
  - 2. Fire-rated Doors, Intumescent Seals: Furnished by selected door manufacturer. Furnish fire-labeled opening assembly complete and in full compliance with UL10C Classified complies with NFPA 80 & NFPA 252. Where required, intumescent seals vary in requirement by door type and door manufacture -- careful coordination required.
  - 3. Smoke & Draft Control Doors, Provide UL10C Classified complies with NFPA 80 & NFPA 252 for use on "S" labeled Positive Pressure door assemblies.
  
- L. Door Shoes & Door Top Caps: Provide door shoes at all exterior wood doors and top caps at all exterior out-swing doors.
  
- M. Silencers: Furnish silencers for interior hollow metal frames, 3 for single doors, 2 for pairs of doors. Omit where sound or light seals occurs, or for fire-resistive-rated door assemblies.

## 2.2 KEYING

- A. Furnish a Proprietary Schlage masterkey system as directed by the owner or architect. Key system to be designated and combined by the Schlage Master Key Department even if pinned by the Authorized Key Center, Authorized Security Center or a local authorized commercial dealer.
  
- B. Extend the original Schlage masterkey system established for Berkeley City College.
  
- C. Furnish all cylinders in the Patent Protected Schlage Small Format Interchangeable Core. (SFIC) "Everest B" family of keyways. Pack change keys independently (PKI)
  - 1. Confirm keyway with PCCD prior to ordering
  
- D. Furnish construction keying for doors requiring locking during construction.
  - 1. For SFIC systems provide 80-035 Small Format Construction Cores in either "BRN" or "GRN" combination for all locks that need to be locked during construction and M204-152 Disposable Cores for all cylinders not required to be locked.
  - 2. For SFIC systems provide ten 48-310 Const. Keys in either "BRN" or "GRN" combination to match cores in # 1 above.

3. For SFIC systems provide two 48-311 Control Keys in either “BRN” or “GRN” combination to match cores in # 1 above. (const.)
  4. For SFIC systems provide two control keys for installing the permanent cores (either 48-311 for non-patented keyways or 49-356 for patented keyways such as “Everest -B” family)
- E. Furnish all keys with visual key control. *(Not all options listed below are*
1. Stamp key “Do Not Duplicate”.
  2. Stamp (BHMA) key symbol on key.
- F. Furnish all cylinders with visual key control.
1. Stamp (BHMA) key symbol on side of cylinder (CKC).
- G. Furnish mechanical keys as follows:
1. Furnish 2 cut change keys for each different change key code.
  2. Furnish 1 uncut key blank for each change key code.
  3. Furnish 6 cut masterkeys for each different masterkey set.
  4. Furnish 3 uncut key blanks for each masterkey set.
  5. Furnish 2 cut control keys cut to the top masterkey for permanent I/C cylinders.
  6. Furnish 1 cut control key cut to each SKD combination.
- H. Furnish Schlage Padlocks and the cylinders to tie them into the masterkey system for gates, storage boxes, utility valve security, roof hatches and roll-up doors keyed as directed in the keying schedule.
1. Furnish KS41D1200 padlock for use with SFIC Schlage cylinders. Furnish 80-037 (Everest-B) with above.
- I. Furnish one Schlage cabinet lock for each cabinet door or drawer so designated on the drawings or keying schedule to match the masterkey system.
1. Furnish CL721G for use with SFIC Schlage cylinders.

## 2.3 FINISHES

- A. Generally to be satin chrome US26D (626 on bronze and 652 on steel) unless otherwise noted.
- B. Furnish push plates, pull plates and kick or armor plates in satin stainless steel US32D (630) unless otherwise noted.
- C. Door closers shall be powder-coated to match other hardware, unless otherwise noted.
- D. Aluminum items to be finished anodized aluminum except thresholds which can be furnished as standard mill finish.

## 2.4 FASTENERS

- A. Screws for strikes, face plates and similar items shall be flat head, countersunk type, provide machine screws for metal and standard wood screws for wood.
- B. Screws for butt hinges shall be flathead, countersunk, full-thread type.
- C. Fastening of closer bases or closer shoes to doors shall be by means of sex bolts and spray painted to match closer finish.
- D. Provide expansion anchors for attaching hardware items to concrete or masonry.
- E. All exposed fasteners shall have a phillips head.
- F. Finish of exposed screws to match surface finish of hardware or other adjacent work.
- G. All Exit Devices and Lock Protectors shall be fastened to the door by the means of sex bolts or through bolts.

### PART 3 - EXECUTION

#### 3.1 INSPECTION

- A. Verify that doors and frames are square and plumb and ready to receive work and dimensions are as instructed by the manufacturer.
- B. Beginning of installation means acceptance of existing conditions.
- C. Fire-Rated Door Assembly Inspection: Upon completion of the installation, all fire door assemblies shall be inspected to confirm proper operation of the closing device and latching device and that only the manufacturer's furnished fasteners are used for installation and that it meets all criteria of a fire door assembly per NFPA 80 (Standard for Fire Doors and Other Opening Protectives) 2016 Edition. A written record shall be maintained and transmitted to the Owner to be made available to the Authority Having Jurisdiction (AHJ). The inspection of the swinging fire doors shall be performed by a certified FDAI (Fire Door Assembly Inspector) with knowledge and understanding of the operating components of the type of door being subjected to the inspection. The record shall list each fire door assembly throughout the project and include each door number, an itemized list of hardware set components at each door opening, and each door location in the facility.

#### 3.2 INSTALLATION

- A. Install hardware in accordance with manufacturer's instructions and requirements of DHI.
- B. Use the templates provided by hardware item manufacturer.
- C. Mounting heights for hardware shall be as recommended by the Door and Hardware Institute. Operating hardware will be located between 34" and 44" AFF.

- D. Set units level, plumb and true to line and location. Adjust and reinforce the attachment substrate as necessary for proper installation and operation.
- E. Drill and countersink units that are not factory-prepared for anchorage fasteners. Space fasteners and anchors in accordance with industry standards.
- F. Set thresholds for exterior doors in full bed of butyl-rubber sealant.
- G. If hand of door is changed during construction, make necessary changes in hardware at no additional cost.
- H. Hardware Installer shall coordinate with security contractor to route cable to connect electrified locks, panic hardware and fire exit hardware to power transfers or electric hinges at the time these items are installed so as to avoid disassembly and reinstallation of hardware.
- I. Hardware Installer shall also be present with the security contractor when the power is turned on for the testing of the electronic hardware applications. Installer shall make adjustments to solenoids, latches, vertical rods and closers to insure proper and secure operation.
- J. All wiring for electro-mechanical hardware mounted on the door shall be connected through the power transfer and terminated in the interface junction box specified for in the Electrical Section.
- K. Conductors shall be minimum 18 gage stranded, multicolored. A minimum 12 in. loop of conductors shall be coiled in the interface junction box. Each conductor shall be permanently marked with its function.
- L. If a power supply is specified in the hardware sets, all conductors shall be terminated in the power supply. Make all connections required for proper operation between the power supply and the electro-mechanical hardware. Provide the proper size conductors as specified in the manufacturer's technical documentation.

### 3.3 ADJUST AND CLEAN

- A. Adjust and check each operating item of hardware and each door, to ensure proper operation or function of every unit. Replace units which cannot be adjusted to operate freely and smoothly as intended for the application made.
- B. Clean adjacent surface soiled by hardware installation.
- C. Final Adjustment: Wherever hardware installation is made more than one month prior to acceptance or occupancy, return to that work area and make final check and adjustment of all hardware items in such space or area. Clean operating items as necessary to restore proper function and finish of hardware and doors. Adjust door control devices to compensate for final operation of heating and ventilating equipment.
- D. Instruct Owner's Personnel in proper adjustment and maintenance of hardware finishes, during the final adjustment of hardware.

- E. Continued Maintenance Service: Approximately six months after the completion of the project, the Contractor accompanied by the Architectural Hardware Consultant, shall return to the project and re-adjust every item of hardware to restore proper functions of doors and hardware. Consult with and instruct Owner's personnel in recommended additions to the maintenance procedures. Replace hardware items which have deteriorated or failed due to faulty design, materials or installation of hardware units. Prepare a written report of current and predictable problems (of substantial nature) in the performance of the hardware.

### 3.4 HARDWARE LOCATIONS

- A. Conform to CCR, Title 24, Part 2; and ADAAG; and the drawings for access-compliant positioning requirements for the disabled.

### 3.5 FIELD QUALITY CONTROL

- A. Contractor is responsible for providing the services of an Architectural Hardware Consultant (AHC) or a proprietary product technician to inspect installation and certify that hardware and its installation have been furnished and installed in accordance with manufacturers' instructions and as specified herein.

### 3.6 SCHEDULE

- A. The items listed in the following schedule shall conform to the requirements of the foregoing specifications.
- B. While the hardware schedule is intended to cover all doors, and other movable parts of the building, and establish type and standard of quality, the contractor is responsible for examining the Plans and Specifications and furnishing proper hardware for all openings whether listed or not. If there are any omissions in hardware groups in regard to regular doors they shall be called to the attention of the Architect prior to bid opening for instruction; otherwise, list will be considered Complete. No extras will be allowed for omissions.
- C. The Door Schedule on the Drawings indicates which hardware set is used with each door.

#### **Manufacturers Abbreviations (Mfr.)**

BLU	=	Blumcraft	Frameless Glass Door Panic Hardware
DRM	=	Dorma	Frameless Glass Door Closer
GLY	=	Glynn-Johnson Corporation	Overhead Door Stops
IVE	=	Ives	Hinges, Pivots, Bolts, Coordinators, Dust Proof Strikes, Push Pull & Kick Plates, Door Stops & Silencers
JOH	=	L.E. Johnson	Sliding Door Hardware
LCN	=	LCN	Door Closers, Auto Operators, Actuators
SCH	=	Schlage Lock Company	Locks, Latches & Cylinders
VON	=	Von Duprin	Exit Devices



ZER = Zero International Thresholds, Gasketing & Weather-stripping

65016 OPT0241627 VERSION 3

GROUP NO. 01

1	EA	CONT. HINGE	224XY EPT	628	IVE
1	EA	POWER TRANSFER	EPT10	689	VON
1	EA	ELEC PANIC HARDWARE	RX-QELX-PA-AX-99-L-NL-06	626	VON
1	EA	SFIC RIM CYLINDER	80-159	626	SCH
1	EA	SFIC EVEREST CORE	80-037 EV B	626	SCH
1	EA	SURFACE CLOSER	4040XP RW/PA TBSRT	689	LCN
1	EA	FLOOR STOP	FS18S	BLK	IVE
1	EA	GASKETING	188SBK PSA	BK	ZER
1	EA	DOOR SWEEP	39A	A	ZER
1	EA	THRESHOLD	PER DETAIL		ZER
			CARD READER - WORK OF DIVISION 28		
			POWER SUPPLY - WORK OF DIVISION 28		

GROUP NO. 02

1	EA	CONT. HINGE	224XY TWP	628	IVE
1	EA	VANDL EU STOREROOM	ND80HDEU RHO RX 12V/24V DC	626	SCH
1	EA	SFIC EVEREST CORE	80-037 EV B	626	SCH
1	EA	SURFACE CLOSER	4040XP RW/PA TBSRT	689	LCN
1	EA	DOOR STOP	FS439 OR WS401/402CVX	682	IVE
1	EA	GASKETING	188SBK PSA	BK	ZER
1	EA	DOOR SWEEP	153A	A	ZER
1	EA	THRESHOLD	PER DETAIL		ZER
			CARD READER - WORK OF DIVISION 28		
			POWER SUPPLY - WORK OF DIVISION 28		

GROUP NO. 03

1	EA	CONT. HINGE	224XY TWP	628	IVE
1	EA	VANDL EU STOREROOM	ND80HDEU RHO RX 12V/24V DC	626	SCH
1	EA	SFIC EVEREST CORE	80-037 EV B	626	SCH
1	EA	SURFACE CLOSER	4040XP SCUSH TBSRT	689	LCN
1	EA	GASKETING	188SBK PSA	BK	ZER
1	EA	DOOR SWEEP	39A	A	ZER
1	EA	THRESHOLD	PER DETAIL		ZER
			CARD READER - WORK OF DIVISION 28		
			POWER SUPPLY - WORK OF DIVISION 28		

GROUP NO. 04

2	EA	HINGE	5BB1HW 5 X 4.5 NRP	630	IVE
1	EA	ELECTRIC HINGE	5BB1HW 5 X 4.5 TW8	630	IVE
1	EA	EU MORTISE LOCK	L9095HDEU 06A CON 12/24 VDC	626	SCH
1	EA	SFIC EVEREST CORE	80-037 EV B	626	SCH
1	EA	OH STOP	100S	630	GLY
1	EA	SURFACE CLOSER	4040XP ST-1630	689	LCN
1	EA	GASKETING	188SBK PSA	BK	ZER
1	EA	DOOR SWEEP	153A	A	ZER
1	EA	THRESHOLD	PER DETAIL		ZER

GROUP NO. 05

1	EA	CONT. HINGE	224XY EPT	628	IVE
1	EA	POWER TRANSFER	EPT10	689	VON
1	EA	ELEC PANIC HARDWARE	RX-PA-AX-99-L-M996-06-FSE	626	VON
1	EA	SFIC RIM CYLINDER	80-159	626	SCH
1	EA	SFIC EVEREST CORE	80-037 EV B	626	SCH
1	EA	SURFACE CLOSER	4040XP SCUSH TBSRT	689	LCN
1	EA	GASKETING	188SBK PSA	BK	ZER
1	EA	DOOR SWEEP	39A	A	ZER
1	EA	THRESHOLD	PER DETAIL		ZER
			CARD READER - WORK OF DIVISION 28		
			POWER SUPPLY - WORK OF DIVISION 28		

GROUP NO. 06

1	EA	CONT. HINGE	224XY	628	IVE
1	EA	PASSAGE SET	ND10S RHO	626	SCH
1	EA	OH STOP	100S	630	GLY
1	EA	SURFACE CLOSER	4040XP ST-1630	689	LCN
1	SET	SEAL SET	WEATHERSTRIP BY DOOR/FRAME MANUFACTURER		
1	EA	THRESHOLD	PER DETAIL		ZER

GROUP NO. 07

2	EA	CONT. HINGE	224XY EPT	628	IVE
2	EA	POWER TRANSFER	EPT10	689	VON
1	EA	ELEC PANIC HARDWARE	RX-QELX-AX-PA-3349A-EO-LBL 24 VDC	626	VON
1	EA	ELEC PANIC HARDWARE	RX-QELX-PA-AX-3349A-NL-OP- LBL-388 24 VDC	626	VON
1	EA	SFIC RIM CYLINDER	80-159	626	SCH
1	EA	SFIC EVEREST CORE	80-037 EV B	626	SCH
2	EA	LONG DOOR PULL	9264 36" 20" O	630- 316	IVE
2	EA	OH STOP	100S	630	GLY
1	EA	SURF. AUTO OPERATOR	9553 REG2 MS AS REQ (120/240 VAC)	ANCL R	LCN
2	EA	ACTUATOR	INGRESS'R I36-3	630	WIK
2	EA	BOLLARD	SQ SERIES 6"X 6" PREPPED FOR INGRESS'R	630	WIK
1	SET	SEAL SET	WEATHERSTRIP BY DOOR/FRAME MANUFACTURER		
1	EA	POWER SUPPLY	PS906 900-2RS 120/240 VAC CARD READER - WORK OF DIVISION 28	LGR	SCE

GROUP NO. 08

2	EA	CONT. HINGE	224XY EPT	628	IVE
2	EA	POWER TRANSFER	EPT10	689	VON
2	EA	ELEC PANIC HARDWARE	RX-PA-3349A-L-BE-E360-06-FS- WH 24 VDC	628	VON
2	EA	OH STOP	100S	630	GLY
2	EA	SURFACE CLOSER	4040XP ST-1630	689	LCN
1	SET	SEAL SET	WEATHERSTRIP BY DOOR/FRAME MANUFACTURER		
1	EA	THRESHOLD	PER DETAIL CARD READER - WORK OF DIVISION 28 POWER SUPPLY - WORK OF DIVISION 28		ZER

GROUP NO. 09

2 1	EA	CONT. HINGE	700	630	IVE
1	<b>EA</b>	<b>CONT. HINGE</b>	<b>700 TW8</b>	<b>630</b>	<b>IVE</b>
1	SET	AUTO FLUSH BOLT	FB31P	630	IVE
1	EA	<b>EU STOREROOM LOCK</b>	<b>ND80HDEU RHO RX 12V/24V</b>	626	SCH
1	EA	COORDINATOR	COR X FL	628	IVE
2	EA	MOUNTING BRACKET	MB	689	IVE
2	EA	SURFACE CLOSER	4040XP RW/PA TBSRT	689	LCN
2	EA	FLOOR STOP	FS18S	BLK	IVE
1	EA	GASKETING	188SBK PSA	BK	ZER
2	EA	DOOR SWEEP	39A	A	ZER
1	EA	ASTRAGAL	43SP	SP	ZER
1	EA	THRESHOLD	PER DETAIL		ZER
			<b>CARD READER - WORK OF DIVISION 28</b>		
			<b>POWER SUPPLY - WORK OF DIVISION 28</b>		

GROUP NO. 10

1	EA	CONT. HINGE	700	630	IVE
1	EA	CONT. HINGE	700 EPT	630	IVE
1	EA	POWER TRANSFER	EPT10	689	VON
1	EA	MANUAL FLUSH BOLT	FB458 12"	626	IVE
1	EA	MANUAL FLUSH BOLT	FB458 24"	626	IVE
1	EA	VANDL EU STOREROOM	ND80HDEU RHO RX 12V/24V DC	626	SCH
1	EA	SFIC EVEREST CORE	80-037 EV B	626	SCH
2	EA	OH STOP & HOLDER	100H	630	GLY
1	EA	ASTRAGAL	43SP	SP	ZER
			<b>CARD READER - WORK OF DIVISION 28</b>		
			<b>POWER SUPPLY - WORK OF DIVISION 28</b>		

GROUP NO. 11

1	EA	CONT. HINGE	224XY EPT	628	IVE
1	EA	POWER TRANSFER	EPT10	689	VON
1	EA	ELEC PANIC HARDWARE	RX-PA-33A-L-BE-E360-06-299- FS-WH 24 VDC	628	VON
1	EA	SURFACE CLOSER	4040XP RW/PA TBSRT	689	LCN
1	EA	WALL STOP	WS401/402CCV	626	IVE
1	SET	SEAL SET	WEATHERSTRIP BY DOOR/FRAME MANUFACTURER		
1	EA	THRESHOLD	PER DETAIL CARD READER - WORK OF DIVISION 28 POWER SUPPLY - WORK OF DIVISION 28		ZER

GROUP NO. 12

3	EA	HINGE	5BB1 4.5 X 4.5	652	IVE
1	EA	VANDL OFFICE LOCK	ND91HD RHO	626	SCH
1	EA	SFIC EVEREST CORE	80-037 EV B	626	SCH
1	EA	WALL STOP	WS401/402CCV	626	IVE
1	EA	GASKETING	188SBK OR BY FRAME MFR	BK	ZER

GROUP NO. 13

3	EA	HINGE	5BB1 4.5 X 4.5	652	IVE
1	EA	VANDL CLASSROOM LOCK	ND94HD RHO	626	SCH
1	EA	SFIC EVEREST CORE	80-037 EV B	626	SCH
1	EA	WALL STOP	WS401/402CCV	626	IVE
3	EA	SILENCER	SR64	GRY	IVE

GROUP NO. 14

3	EA	HINGE	5BB1 4.5 X 4.5	652	IVE
1	EA	VANDL CLASSROOM LOCK	ND94HD RHO	626	SCH
1	EA	SFIC EVEREST CORE	80-037 EV B	626	SCH
1	EA	SURFACE CLOSER	4040XP RW/PA TBSRT	689	LCN
1	EA	WALL STOP	WS401/402CCV	626	IVE
1	EA	GASKETING	188SBK PSA	BK	ZER

GROUP NO. 15

3	EA	HINGE	5BB1 4.5 X 4.5	652	IVE
1	EA	VANDL CLASSROOM LOCK	ND94HD RHO	626	SCH
1	EA	SFIC EVEREST CORE	80-037 EV B	626	SCH
1	EA	SURFACE CLOSER	4040XP RW/PA TBSRT	689	LCN
1	EA	KICK PLATE	8400 10" X 2" LDW B-CS	630	IVE
1	EA	WALL STOP/HOLDER	WS40	US26D	IVE
3	EA	SILENCER	SR64	GRY	IVE

GROUP NO. 16

3	EA	HINGE	5BB1HW 5 X 4.5	652	IVE
1	EA	VANDL CLASSROOM LOCK	ND94HD RHO	626	SCH
1	EA	SFIC EVEREST CORE	80-037 EV B	626	SCH
1	EA	WALL STOP	WS401/402CCV	626	IVE
1	EA	GASKETING	188SBK PSA	BK	ZER

GROUP NO. 17

2	EA	HINGE	5BB1HW 4.5 X 4.5	652	IVE
1	EA	ELECTRIC HINGE	5BB1HW 4.5 X 4.5 TW8	652	IVE
1	EA	VANDL EU STOREROOM	ND80HDEU RHO RX 12V/24V DC	626	SCH
1	EA	SFIC EVEREST CORE	80-037 EV B	626	SCH
1	EA	SURFACE CLOSER	4040XP RW/PA TBSRT	689	LCN
1	EA	WALL STOP	WS401/402CCV	626	IVE
1	EA	GASKETING	188SBK OR BY FRAME MFR	BK	ZER
			CARD READER - WORK OF DIVISION 28		
			POWER SUPPLY - WORK OF DIVISION 28		

GROUP NO. 18

3	EA	HINGE	5BB1HW 4.5 X 4.5	652	IVE
1	EA	POWER TRANSFER	EPT10	689	VON
1	EA	VANDL EU STOREROOM	ND80HDEU RHO RX 12V/24V DC	626	SCH
1	EA	SFIC EVEREST CORE	80-037 EV B	626	SCH
1	EA	SURFACE CLOSER	4040XP RW/PA TBSRT	689	LCN
1	EA	DOOR STOP	FS439 OR WS401/402CVX	682	IVE
1	EA	GASKETING	188SBK OR BY FRAME MFR	BK	ZER
1	EA	DOOR BOTTOM	364AA	AA	ZER
			CARD READER - WORK OF DIVISION 28		
			POWER SUPPLY - WORK OF DIVISION 28		



GROUP NO. 19

2	EA	HINGE	5BB1 4.5 X 4.5	652	IVE
1	EA	ELECTRIC HINGE	5BB1 4.5 X 4.5 TW8	652	IVE
1	EA	VANDL EU STOREROOM	ND80HDEU RHO RX 12V/24V DC	626	SCH
1	EA	SFIC EVEREST CORE	80-037 EV B	626	SCH
1	EA	SURFACE CLOSER	4040XP RW/PA TBSRT	689	LCN
1	EA	DOOR STOP	FS439 OR WS401/402CVX	682	IVE
1	EA	GASKETING	188SBK OR BY FRAME MFR	BK	ZER
1	EA	DOOR BOTTOM	364AA	AA	ZER
			CARD READER - WORK OF DIVISION 28		
			POWER SUPPLY - WORK OF DIVISION 28		

GROUP NO. 20

2	EA	HINGE	5BB1HW 4.5 X 4.5	652	IVE
1	EA	ELECTRIC HINGE	5BB1HW 4.5 X 4.5 TW8	652	IVE
1	EA	EU MORTISE LOCK	L9492HDEU 06A L583-363 RX DM CON 12/24 VDC	626	SCH
1	EA	OUTSIDE INDICATOR	L283-414 (OCCUPIED/VACANT) (PROVIDED BY GOOGLE)	626	SCH
1	EA	SFIC EVEREST CORE	80-037 EV B	626	SCH
1	EA	SURFACE CLOSER	4040XP RW/PA TBSRT	689	LCN
1	EA	WALL STOP	WS401/402CCV	626	IVE
1	EA	GASKETING	188SBK PSA	BK	ZER
			CARD READER - WORK OF DIVISION 28		
			POWER SUPPLY - WORK OF DIVISION 28		

TURNING INSIDE THUMBTURN TO SHUNT POWER TO CARD READER

GROUP NO. 21

3	EA	HINGE	5BB1HW 4.5 X 4.5	652	IVE
1	EA	POWER TRANSFER	EPT10	689	VON
1	EA	VANDL EU STOREROOM	ND80HDEU RHO RX 12V/24V DC	626	SCH
1	EA	SFIC EVEREST CORE	80-037 EV B	626	SCH
1	EA	OH STOP	100S	630	GLY
1	EA	SURFACE CLOSER	4040XP ST-1630	689	LCN
1	EA	GASKETING	188SBK OR BY FRAME MFR	BK	ZER
1	EA	DOOR BOTTOM	364AA	AA	ZER
			CARD READER - WORK OF DIVISION 28		
			POWER SUPPLY - WORK OF DIVISION 28		

GROUP NO. 22

2	EA	HINGE	5BB1HW 4.5 X 4.5	652	IVE
1	EA	ELECTRIC HINGE	5BB1HW 4.5 X 4.5 TW8	652	IVE
1	EA	ELEC FIRE EXIT HARDWARE	RX-PA-AX-99-L-F-M996-06-FSE	626	VON
1	EA	SFIC RIM CYLINDER	80-159	626	SCH
1	EA	SFIC EVEREST CORE	80-037 EV B	626	SCH
1	EA	SURFACE CLOSER	4040XP SCUSH TBSRT	689	LCN
1	EA	GASKETING	188SBK PSA	BK	ZER
			CARD READER - WORK OF DIVISION 28		
			POWER SUPPLY - WORK OF DIVISION 28		

GROUP NO. 23

1	EA	CONT. HINGE	224XY EPT	628	IVE
1	EA	POWER TRANSFER	EPT10	689	VON
1	EA	ELEC PANIC HARDWARE	RX-PA-AX-99-L-M996-06-FSE	626	VON
1	EA	SFIC RIM CYLINDER	80-159	626	SCH
1	EA	SFIC EVEREST CORE	80-037 EV B	626	SCH
1	EA	SURFACE CLOSER	4040XP RW/PA TBSRT	689	LCN
1	EA	DOOR STOP	FS439 OR WS401/402CVX	682	IVE
1	EA	GASKETING	188SBK OR BY FRAME MFR	BK	ZER
			CARD READER - WORK OF DIVISION 28		
			POWER SUPPLY - WORK OF DIVISION 28		

GROUP NO. 24

3	EA	HINGE	5BB1HW 4.5 X 4.5	652	IVE
1	EA	POWER TRANSFER	EPT10	689	VON
1	EA	ELEC PANIC HARDWARE	RX-PA-AX-99-L-M996-06-FSE	626	VON
1	EA	SFIC RIM CYLINDER	80-159	626	SCH
1	EA	SFIC EVEREST CORE	80-037 EV B	626	SCH
1	EA	OH STOP	100S	630	GLY
1	EA	SURFACE CLOSER	4040XP RW/PA TBSRT	689	LCN
1	EA	DOOR STOP	FS439 OR WS401/402CVX	682	IVE
1	EA	GASKETING	188SBK OR BY FRAME MFR	BK	ZER
1	EA	DOOR BOTTOM	364AA	AA	ZER
			CARD READER - WORK OF DIVISION 28		
			POWER SUPPLY - WORK OF DIVISION 28		

GROUP NO. 25

3	EA	HINGE	5BB1HW 4.5 X 4.5	652	IVE
1	EA	POWER TRANSFER	EPT10	689	VON
1	EA	ELEC PANIC HARDWARE	RX-PA-AX-99-L-M996-06-FSE	626	VON
1	EA	SFIC RIM CYLINDER	80-159	626	SCH
1	EA	SFIC EVEREST CORE	80-037 EV B	626	SCH
1	EA	SURFACE CLOSER	4040XP RW/PA TBSRT	689	LCN
1	EA	DOOR STOP	FS439 OR WS401/402CVX	682	IVE
1	EA	GASKETING	188SBK OR BY FRAME MFR	BK	ZER
1	EA	DOOR BOTTOM	364AA	AA	ZER
			CARD READER - WORK OF DIVISION 28		
			POWER SUPPLY - WORK OF DIVISION 28		

GROUP NO. 26

3	EA	HINGE	5BB1 4.5 X 4.5	652	IVE
1	EA	VANDL STOREROOM LOCK	ND96HD RHO	626	SCH
1	EA	SFIC EVEREST CORE	80-037 EV B	626	SCH
1	EA	SURFACE CLOSER	4040XP RW/PA TBSRT	689	LCN
1	EA	KICK PLATE	8400 10" X 2" LDW B-CS	630	IVE
1	EA	WALL STOP/HOLDER	WS40	US26D	IVE
3	EA	SILENCER	SR64	GRY	IVE

GROUP NO. 27

3	EA	HINGE	5BB1 4.5 X 4.5	652	IVE
1	EA	VANDL STOREROOM LOCK	ND96HD RHO	626	SCH
1	EA	SFIC EVEREST CORE	80-037 EV B	626	SCH
1	EA	SURFACE CLOSER	4040XP RW/PA TBSRT	689	LCN
1	EA	WALL STOP	WS401/402CCV	626	IVE
1	EA	GASKETING	188SBK PSA	BK	ZER

GROUP NO. 28

3	EA	HINGE	5BB1 4.5 X 4.5	652	IVE
1	EA	PRIVACY LOCK	ND40S RHO	626	SCH
1	EA	SURFACE CLOSER	4040XP RW/PA TBSRT	689	LCN
2	EA	KICK PLATE	8400 10" X 2" LDW B-CS	630	IVE
1	EA	WALL STOP	WS401/402CCV	626	IVE
1	EA	GASKETING	188SBK PSA	BK	ZER

GROUP NO. 29

3	EA	HINGE	5BB1 4.5 X 4.5	652	IVE
1	EA	PASSAGE SET	ND10S RHO	626	SCH
1	EA	WALL STOP	WS401/402CCV	626	IVE
1	EA	GASKETING	188SBK PSA	BK	ZER

GROUP NO. 30

5	EA	HINGE	5BB1HW 4.5 X 4.5	652	IVE
1	EA	ELECTRIC HINGE	5BB1HW 4.5 X 4.5 TW8	652	IVE
1	SET	AUTO FLUSH BOLT	FB31P	630	IVE
1	EA	VANDL EU STOREROOM	ND80HDEU RHO RX 12V/24V DC	626	SCH
1	EA	SFIC EVEREST CORE	80-037 EV B	626	SCH
1	EA	COORDINATOR	COR X FL	628	IVE
2	EA	SURFACE CLOSER	4040XP RW/PA TBSRT	689	LCN
2	EA	WALL STOP	WS401/402CCV	626	IVE
1	EA	GASKETING	188SBK PSA	BK	ZER
1	EA	ASTRAGAL	44STST OR BY HM DOOR MFR	STST	ZER
			CARD READER - WORK OF DIVISION 28		
			POWER SUPPLY - WORK OF DIVISION 28		

GROUP NO. 31

5	EA	HINGE	5BB1HW 4.5 X 4.5	652	IVE
1	EA	ELECTRIC HINGE	5BB1HW 4.5 X 4.5 TW8	652	IVE
1	SET	AUTO FLUSH BOLT	FB31P	630	IVE
1	EA	VANDL EU STOREROOM	ND80HDEU RHO RX 12V/24V DC	626	SCH
1	EA	SFIC EVEREST CORE	80-037 EV B	626	SCH
1	EA	COORDINATOR	COR X FL	628	IVE
2	EA	MOUNTING BRACKET	MB	689	IVE
2	EA	SURFACE CLOSER	4040XP RW/PA TBSRT	689	LCN
2	EA	KICK PLATE	8400 10" X 2" LDW B-CS	630	IVE
2	EA	WALL STOP	WS401/402CCV	626	IVE
1	EA	GASKETING	188SBK PSA	BK	ZER
1	EA	ASTRAGAL	44STST OR BY HM DOOR MFR CARD READER - WORK OF DIVISION 28 POWER SUPPLY - WORK OF DIVISION 28	STST	ZER

GROUP NO. 32

8	EA	POCKET PIVOT	91105F	630	IVE
2	EA	FIRE EXIT HARDWARE	AX-9447-L-BE-F-06	626	VON
2	EA	SURFACE CLOSER	4000T	689	LCN
2	EA	MAGNET	SEM7840 12V/24V/120V	689	LCN
1	EA	GASKETING	188SBK PSA	BK	ZER
1	SET	MEETING STILE	328AA-S	AA	ZER
2	EA	DOOR SWEEP	8192AA	AA	ZER

MAG HOLDER TIED TO FIRE ALARM

GROUP NO. 33

2	EA	BOTTOM PIVOT	7215 BTM	626	IVE
2	SET	OVERHEAD CONC. CLOSER	RTS88	689	DRM
2	EA	EXIT DEVICE	PA-100-F W/ KEY LOCK	626	BLU
2	EA	SFIC MORTISE CYL.	80-131	626	SCH
2	EA	SFIC EVEREST CORE	80-037 EV B	626	SCH
2	SET	TOP AND BOTTOM RAILS/PATCH FITTINGS	BY FRAMELESS GLASS DOOR MANUFACTURER		

GROUP NO. 34

1	EA	CYLINDER	80-XXX EV B TYPE AS REQUIRED BY DOOR MFR BALANCE OF HARDWARE BY ROLL UP DOOR MFR	626	SCH
---	----	----------	---	-----	-----

GROUP NO. 35

2	EA	CONT. HINGE	700	630	IVE
1	EA	MANUAL FLUSH BOLT	FB458 12"	626	IVE
1	EA	MANUAL FLUSH BOLT	FB458 24"	626	IVE
1	EA	VANDL STOREROOM LOCK	ND96HD RHO	626	SCH
1	EA	SFIC EVEREST CORE	80-037 EV B	626	SCH
2	EA	OH STOP & HOLDER	100H	630	GLY
1	EA	ASTRAGAL	43SP	SP	ZER

GROUP NO. 36

4	EA	POCKET PIVOT	91105F	630	IVE
2	EA	FIRE EXIT HARDWARE	AX-9447-EO-F	626	VON
2	EA	SURFACE CLOSER	4000T	689	LCN
2	EA	MAGNET	SEM7840 12V/24V/120V	689	LCN
1	EA	GASKETING	188SBK PSA	BK	ZER
1	EA	ASTRAGAL	47A	A	ZER

MAG HOLDER TIED TO FIRE ALARM

GROUP NO. 37

5	EA	<b>HINGE</b>	<b>5BB1HW 4.5 X 4.5</b>	652	IVE
1	EA	<b>ELECTRIC HINGE</b>	<b>5BB1HW 4.5 X 4.5 TW8</b>	652	IVE
1	EA	<b>AUTO FLUSH BOLT</b>	<b>FB31P</b>	630	IVE
1	EA	<b>EU STOREROOM LOCK</b>	<b>ND80HDEU RHO RX 12V/24V DC</b>	626	SCH
1	EA	<b>SFIC EVEREST CORE</b>	<b>80-037 EV B</b>	626	SCH
1	EA	<b>COORDINATOR</b>	<b>COR X FL</b>	628	IVE
2	EA	<b>SURFACE CLOSER</b>	<b>4040XP RW/PA TBSRT</b>	689	LCN
2	EA	<b>KICK PLATE</b>	<b>8400 10" X 2" LDW B-CS</b>	630	IVE
2	EA	<b>WALL STOP</b>	<b>WS401/402CCV</b>	626	IVE
1	EA	<b>GASKETING</b>	<b>188SBK PSA</b>	BK	ZER
1	EA	<b>ASTRAGAL</b>	<b>44STST OR BY HM DOOR MFR</b>	STST	ZER
			<b>CARD READER - WORK OF DIVISION 28</b>		
			<b>POWER SUPPLY - WORK OF DIVISION 28</b>		

GROUP NO. 38

8	EA	HINGE	5BB1 4.5 X 4.5	652	IVE
1	EA	MANUAL FLUSH BOLT	FB458 24"	626	IVE
1	EA	VANDL CLASSROOM LOCK	ND94HD RHO	626	SCH
1	EA	SFIC EVEREST CORE	80-037 EV B	626	SCH
2	EA	OH STOP	90S	630	GLY
2	EA	WALL STOP	WS401/402CCV	626	IVE
2	EA	SILENCER	SR64	GRY	IVE



GROUP NO. 39

5	EA	HINGE	5BB1HW 4.5 X 4.5	652	IVE
1	EA	ELECTRIC HINGE	5BB1HW 4.5 X 4.5 TW8	652	IVE
1	SET	AUTO FLUSH BOLT	FB31P	630	IVE
1	EA	VANDL EU STOREROOM	ND80HDEU RHO 12V/24V DC	626	SCH
1	EA	SFIC EVEREST CORE	80-037 EV B	626	SCH
1	EA	COORDINATOR	COR X FL	628	IVE
2	EA	MOUNTING BRACKET	MB	689	IVE
2	EA	SURFACE CLOSER	4040XP RW/PA TBSRT	689	LCN
2	EA	KICK PLATE	8400 10" X 2" LDW B-CS	630	IVE
2	EA	WALL STOP	WS401/402CCV	626	IVE
1	EA	GASKETING	188SBK PSA	BK	ZER
1	EA	ASTRAGAL	44STST OR BY HM DOOR MFR	STST	ZER
			CARD READER - WORK OF DIVISION 28		
			POWER SUPPLY - WORK OF DIVISION 28		

GROUP NO. 40 – **NOT USED**

GROUP NO. 41

1	EA	CYLINDER	80-XXX EV B TYPE AS REQUIRED BY DOOR MFR	626	SCH
1	EA	SFIC EVEREST CORE	80-037 EV B HARDWARE BY FOLDING DOOR MFR	626	SCH

GROUP NO. 42

6	EA	HINGE	5BB1HW 4.5 X 4.5	652	IVE
1	EA	POWER TRANSFER	EPT10	689	VON
1	SET	CONST LATCHING BOLT	FB51P	630	IVE
1	EA	ELEC PANIC HARDWARE	RX-PA-AX-9949-L-M996-06-FSE- LBL	626	VON
1	EA	SFIC MORTISE CYL.	80-131	626	SCH
1	EA	COORDINATOR	COR X FL	628	IVE
2	EA	MOUNTING BRACKET	MB	689	IVE
1	EA	SURFACE CLOSER	4040XP EDA	689	LCN
1	EA	SURFACE CLOSER	4040XP EDA ST-1956 TBSRT	689	LCN
2	EA	KICK PLATE	8400 10" X 2" LDW B-CS	630	IVE
2	EA	WALL STOP	WS401/402CCV	626	IVE
1	EA	GASKETING	188SBK PSA	BK	ZER
1	EA	ASTRAGAL	44STST OR BY HM DOOR MFR CARD READER - WORK OF DIVISION 28 POWER SUPPLY - WORK OF DIVISION 28	STST	ZER

GROUP NO. 43

3	EA	HINGE	5BB1 4.5 X 4.5	652	IVE
1	EA	PANIC HARDWARE	PA-AX-98-EO	626	VON
1	EA	SURFACE CLOSER	4040XP SCUSH TBSRT	689	LCN
1	EA	GASKETING	188SBK PSA	BK	ZER
1	EA	DOOR BOTTOM	355AA	AA	ZER

GROUP NO. 44

3	EA	HINGE	5BB1 4.5 X 4.5	652	IVE
1	EA	VANDL OFFICE LOCK	ND91HD RHO	626	SCH
1	EA	SFIC EVEREST CORE	80-037 EV B	626	SCH
1	EA	WALL STOP	WS401/402CCV	626	IVE
1	EA	GASKETING	188SBK OR BY FRAME MFR	BK	ZER
1	EA	DOOR BOTTOM	364AA	AA	ZER

**GROUP NO. 45**

3	EA	HINGE	5BB1HW 4.5 X 4.5	652	IVE
1	EA	PANIC HARDWARE	PA-AX-98-EO	626	VON
1	EA	SURFACE CLOSER	4040XP RW/PA TBSRT	689	LCN
1	EA	DOOR STOP	FS439 OR WS401/402CVX	682	IVE
1	EA	GASKETING	188SBK OR BY FRAME MFR	BK	ZER
1	EA	DOOR BOTTOM	364AA	AA	ZER

**GROUP NO. 46**

3	EA	HINGE	5BB1HW 5 X 4.5 NRP	630	IVE
1	EA	VANDL STOREROOM LOCK	ND96HD RHO	626	SCH
1	EA	SFIC EVEREST CORE	80-037 EV B	626	SCH
1	EA	SURFACE CLOSER	4040XP RW/PA TBSRT	689	LCN
1	EA	WALL STOP	WS401/402CCV	626	IVE
1	EA	GASKETING	188SBK PSA	BK	ZER
1	EA	DOOR SWEEP	153A	A	ZER
1	EA	THRESHOLD	PER DETAIL		ZER

**GROUP NO. 47**

2	EA	HINGE	5BB1 5 X 4.5	652	IVE
1	EA	ELECTRIC HINGE	5BB1 5 X 4.5 TW8	652	IVE
1	EA	EU STOREROOM LOCK	ND80HDEU RHO RX 12V/24V DC	626	SCH
1	EA	SFIC EVEREST CORE	80-037 EV B	626	SCH
1	EA	SURFACE CLOSER	4040XP RW/PA TBSRT	689	LCN
1	EA	WALL STOP	WS401/402CCV	626	IVE
1	EA	GASKETING	188SBK OR BY FRAME MFR	BK	ZER
			CARD READER - WORK OF DIVISION 28		
			POWER SUPPLY - WORK OF DIVISION 28		

END OF SECTION

**GENERAL NOTES**

1. ALL EXTERIOR GLAZING IS TO BE GL-01 OR GL-02, HEAT STRENGTHENED SAFETY GLASS.

DSA APPROVAL

**RATCLIFF**

5856 Doyle Street  
Emeryville, CA 94608  
Tel 510 899 6400  
www.ratcliffarch.com



ISSUE SCHEDULE	NO.	DATE
Bid Addendum 1	A	06/29/22
Bid Addendum 2	B	07/25/22
Bid Addendum 6	C	08/10/22

**PERALTA COMMUNITY COLLEGE DISTRICT BERKELEY CITY COLLEGE**  
2118 MILVIA STREET  
BERKELEY, CA. 94704

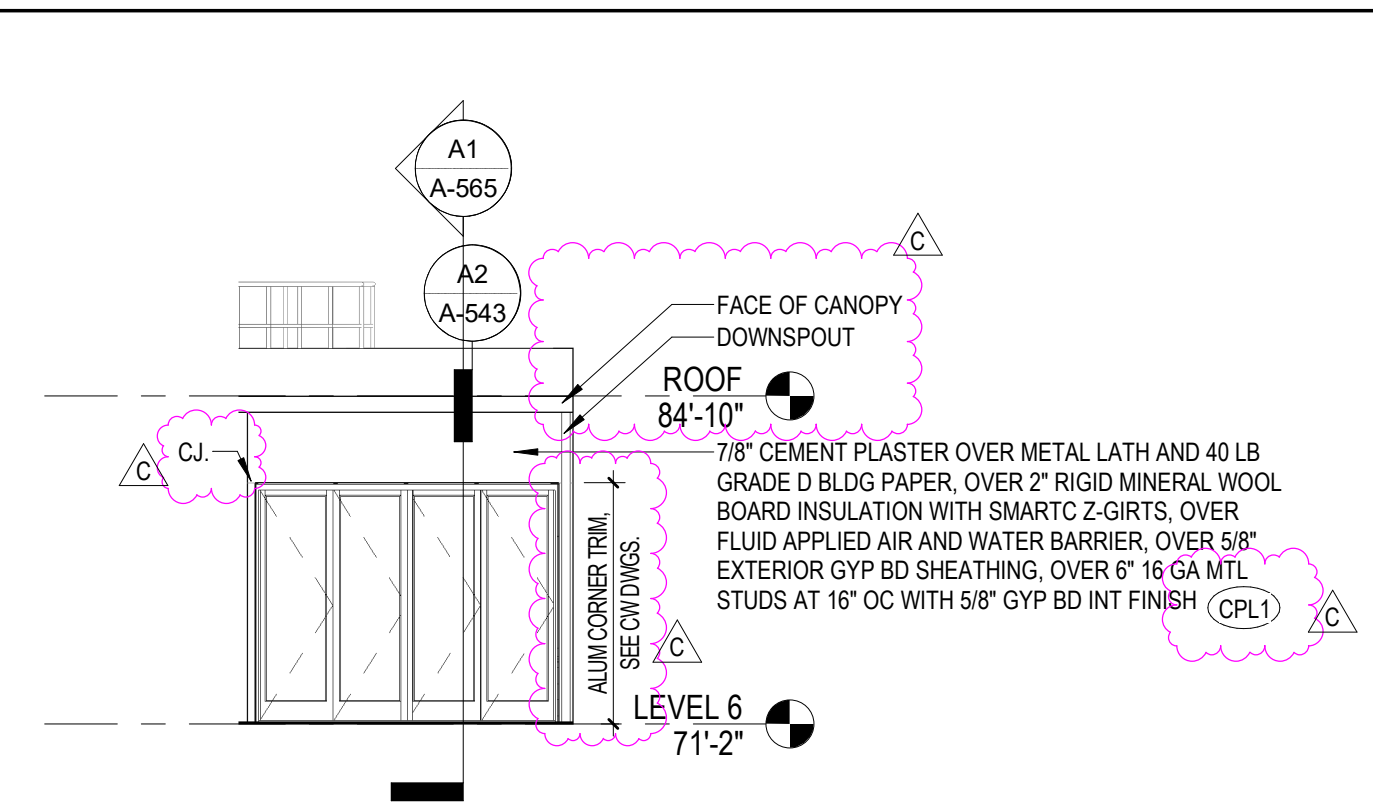
**BCC WEST**

SHEET TITLE:  
**EXTERIOR ELEVATIONS - SOUTH & EAST**

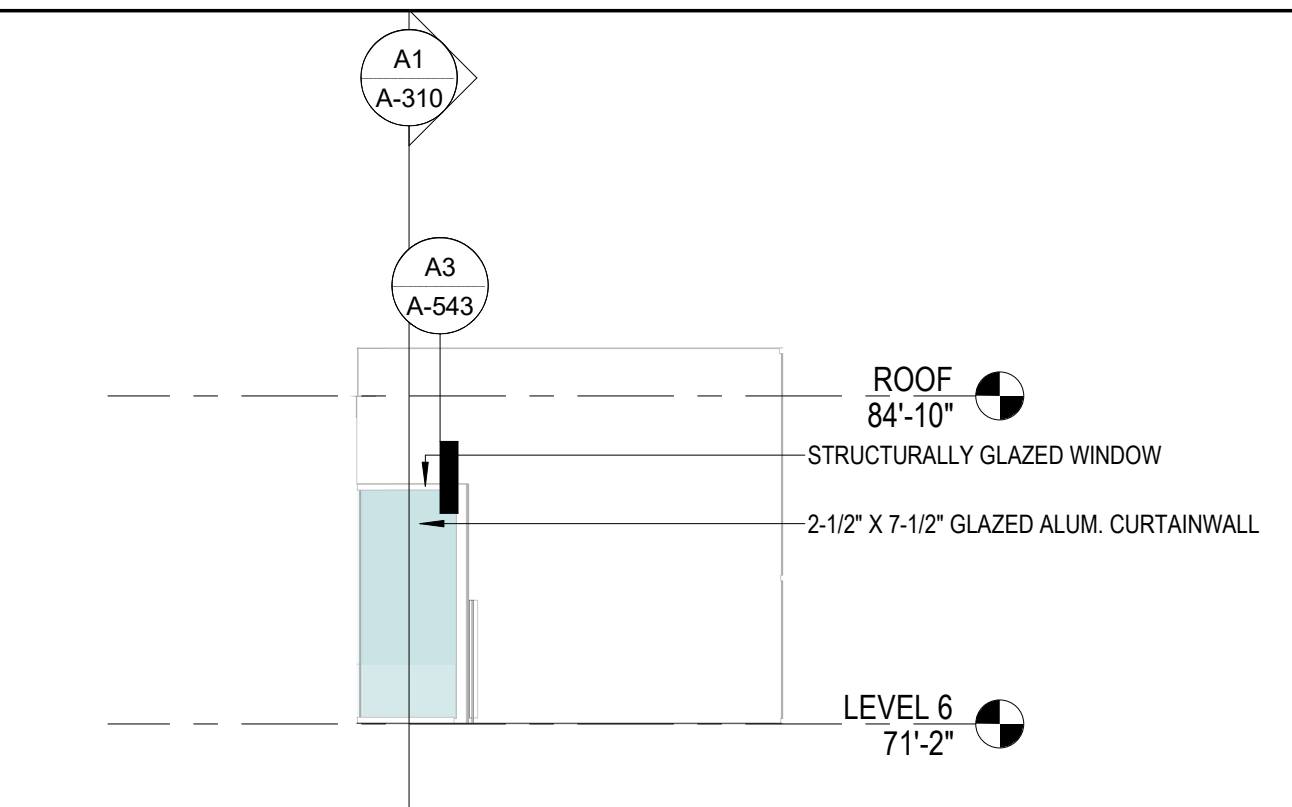
SCALE: 1/8" = 1'-0"  
PROJECT NUMBER: 21415

SHEET NUMBER: **A-200**

D

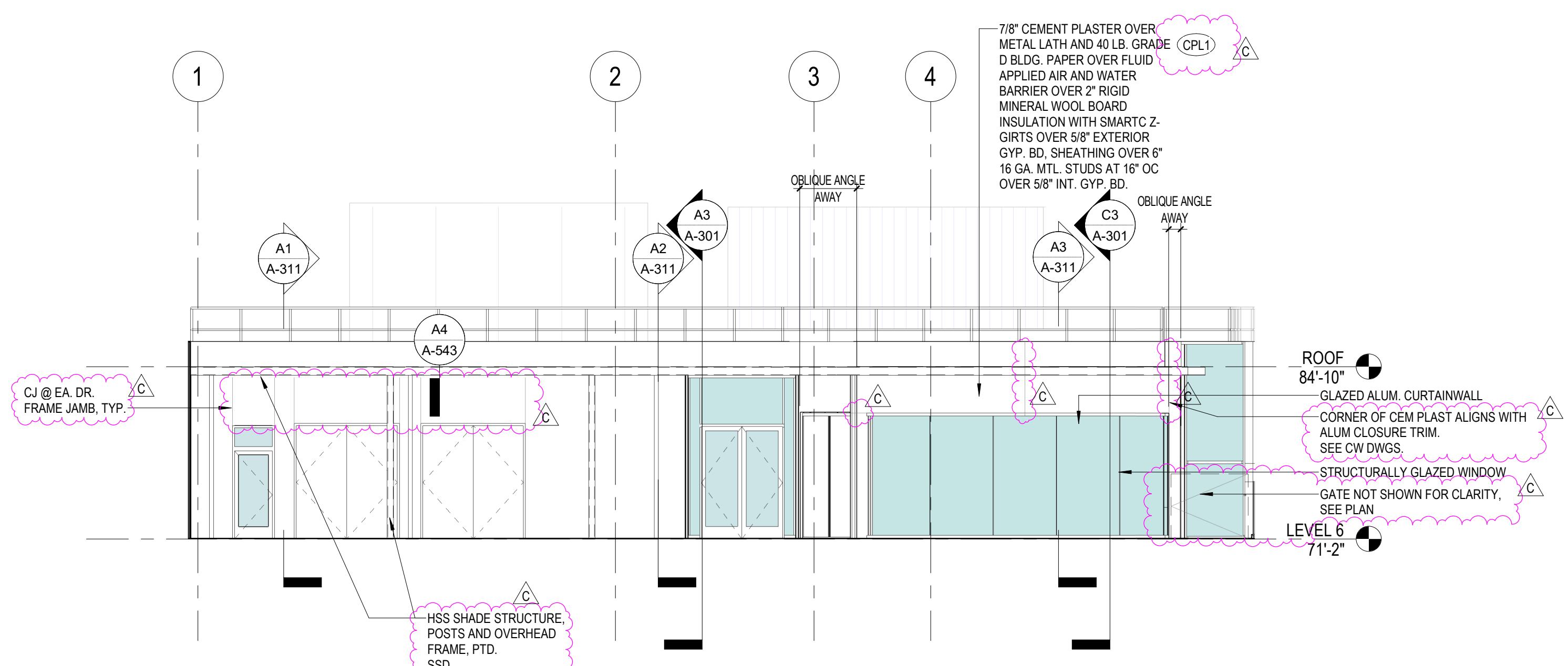


**D1 BUILDING ELEVATION - SOUTHWEST - LEVEL 6 PATIO AT CONFERENCE RM**  
1/8" = 1'-0"

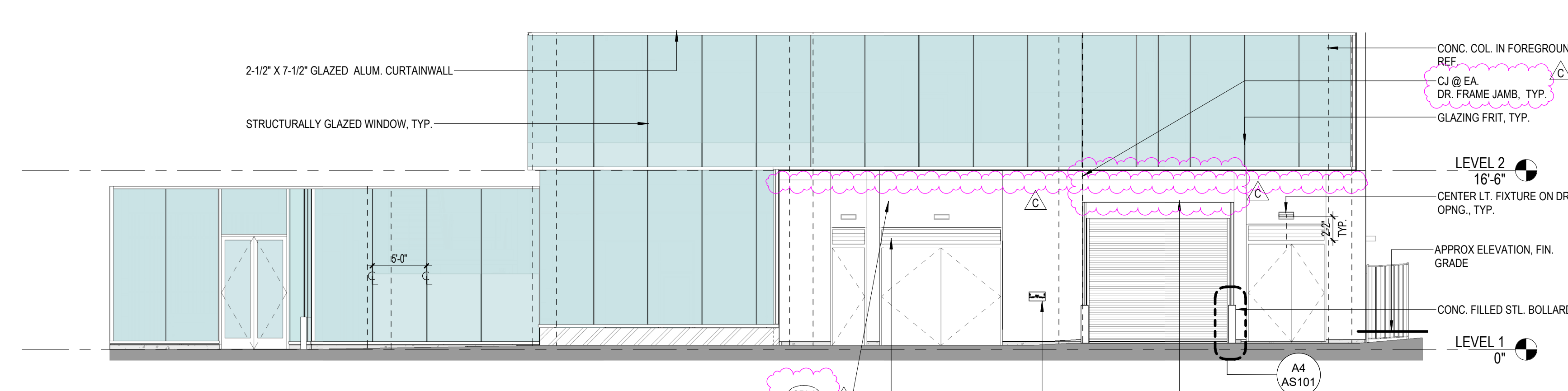


**D2 BUILDING ELEVATION - SOUTHEAST - LEVEL 6 PATIO AT CONFERENCE RM**  
1/8" = 1'-0"

C

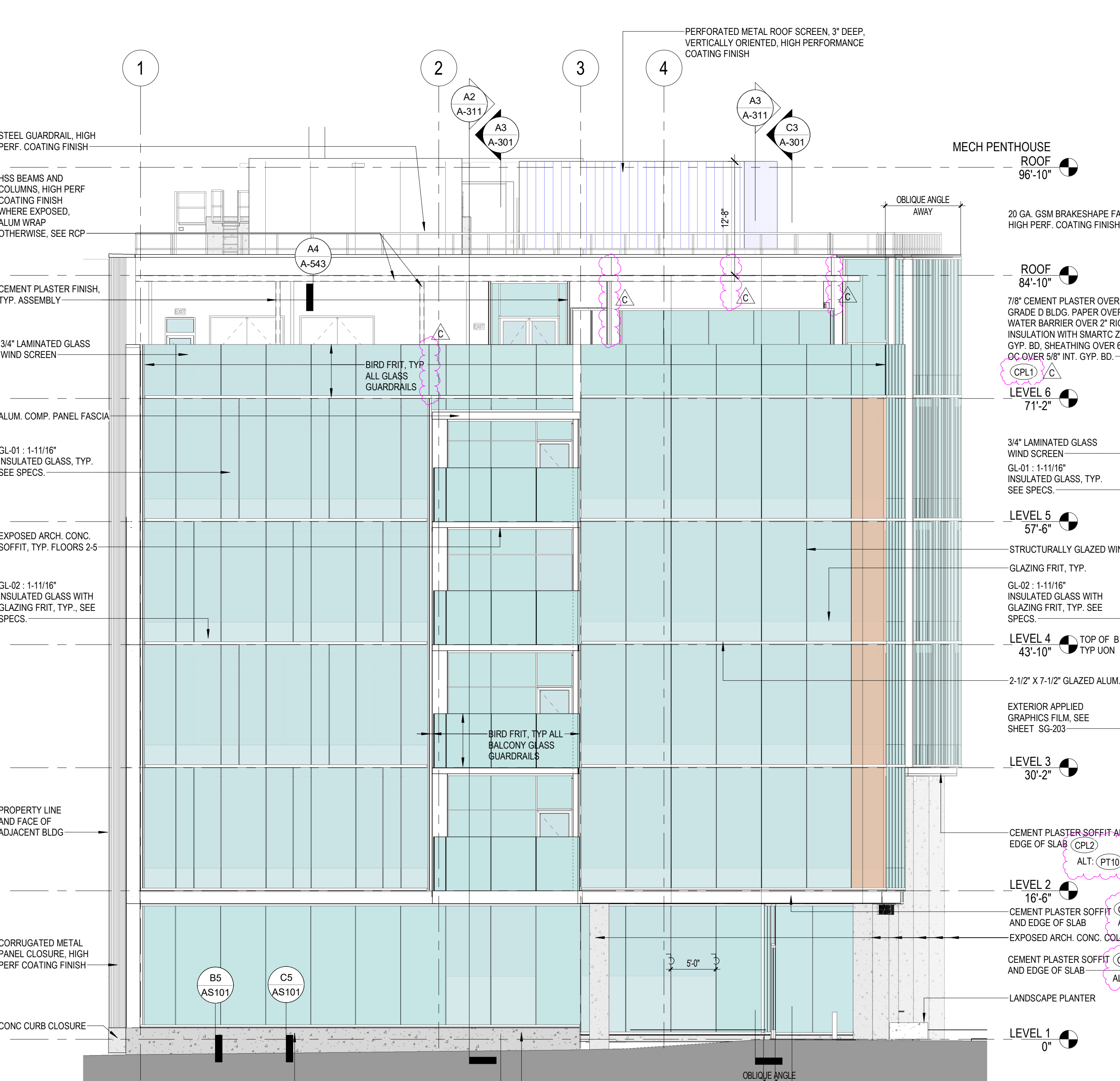


**C1 BUILDING ELEVATION - SOUTH - LEVEL 6 PATIO**  
1/8" = 1'-0"

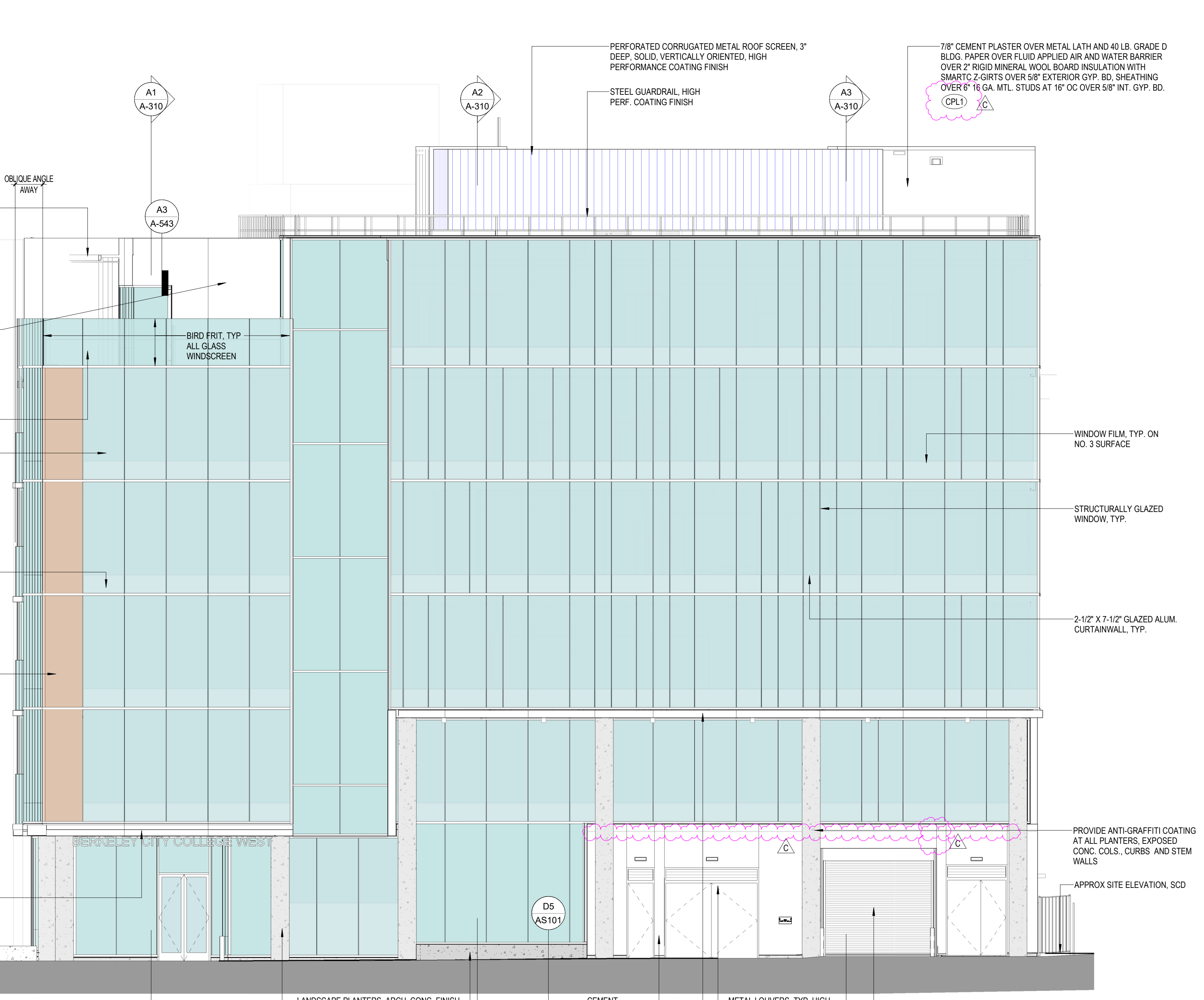


**C3 BUILDING ELEVATION - EAST AT LEVEL 1 & 2 RECESSED FACADE**  
1/8" = 1'-0"

B



**A1 BUILDING ELEVATION - SOUTH**  
1/8" = 1'-0"



**A3 BUILDING ELEVATION - EAST**  
1/8" = 1'-0"

09/20/2021 11:28:17 AM

07/18/2022 DSA SUBMITTAL & BID SET

**GENERAL NOTES**

1. ALL EXTERIOR GLAZING IS TO BE GL1, HEAT STRENGTHENED SAFETY GLASS.

DSA APPROVAL

**RATCLIFF**

5856 Doyle Street  
Emeryville, CA 94608  
Tel 510 899 6400  
www.ratcliffarch.com



ISSUE SCHEDULE	NO.	DATE
Bid Addendum 1	A	06/29/22
Bid Addendum 2	B	07/25/22
Bid Addendum 6	C	08/10/22

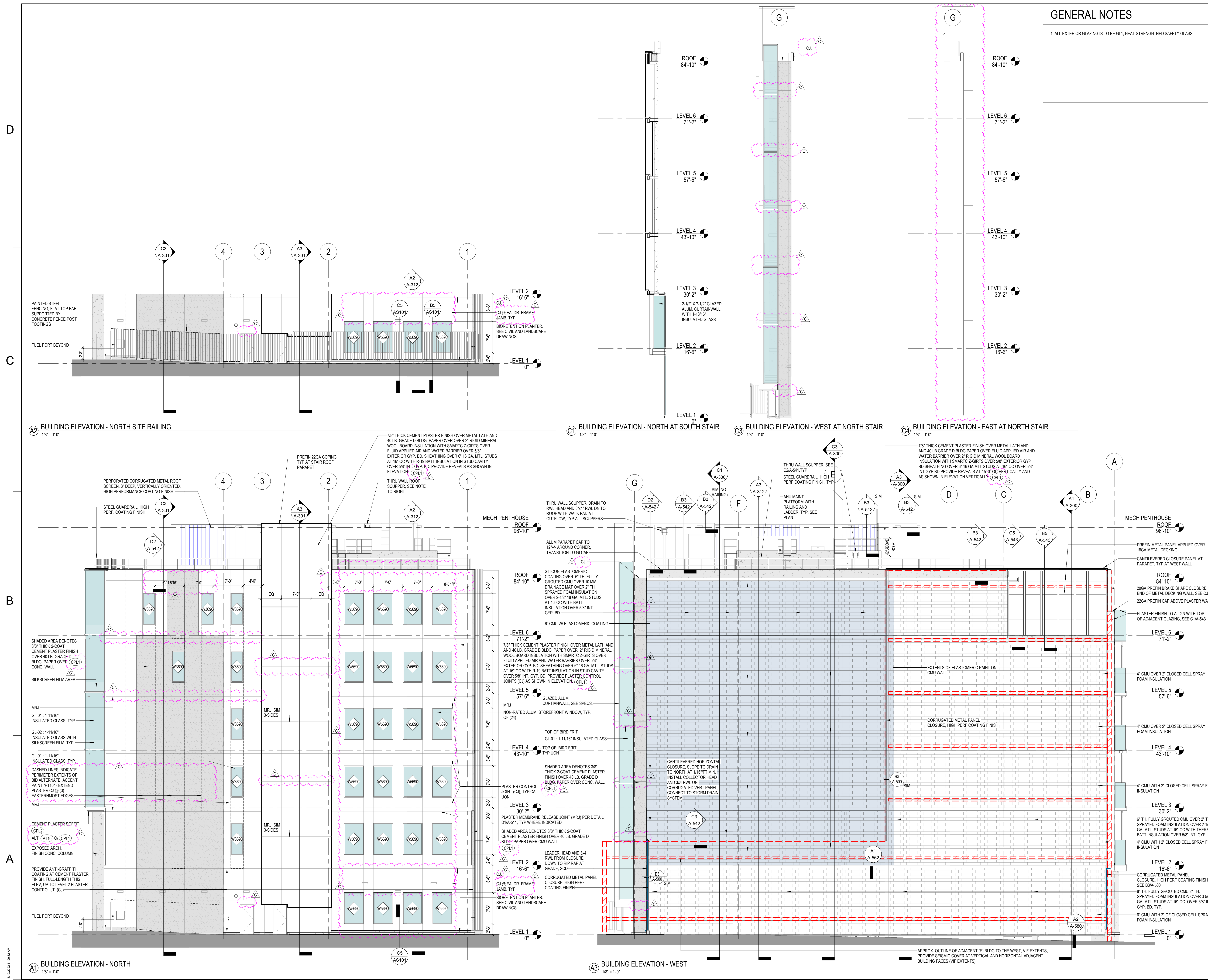
**PERALTA COMMUNITY COLLEGE DISTRICT BERKELEY CITY COLLEGE**  
2118 MILVIA STREET  
BERKELEY, CA. 94704

**BCC WEST**

SHEET TITLE:  
**EXTERIOR ELEVATIONS - NORTH & WEST**

SCALE: 1/8" = 1'-0"  
PROJECT NUMBER: 21415

SHEET NUMBER: **A-201**



09/20/2021 11:29:32 AM

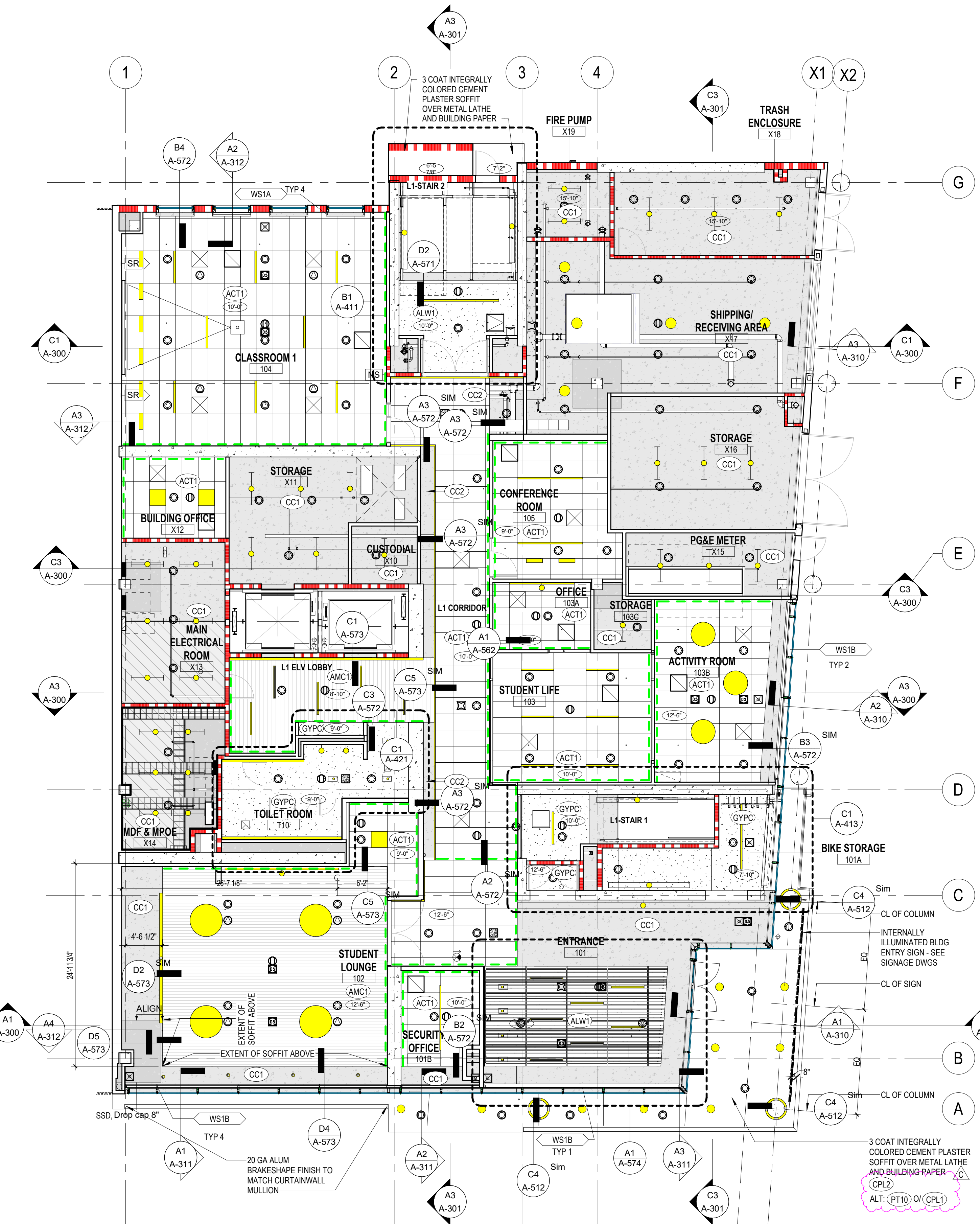
07/18/2022 DSA SUBMITTAL & BID SET

D

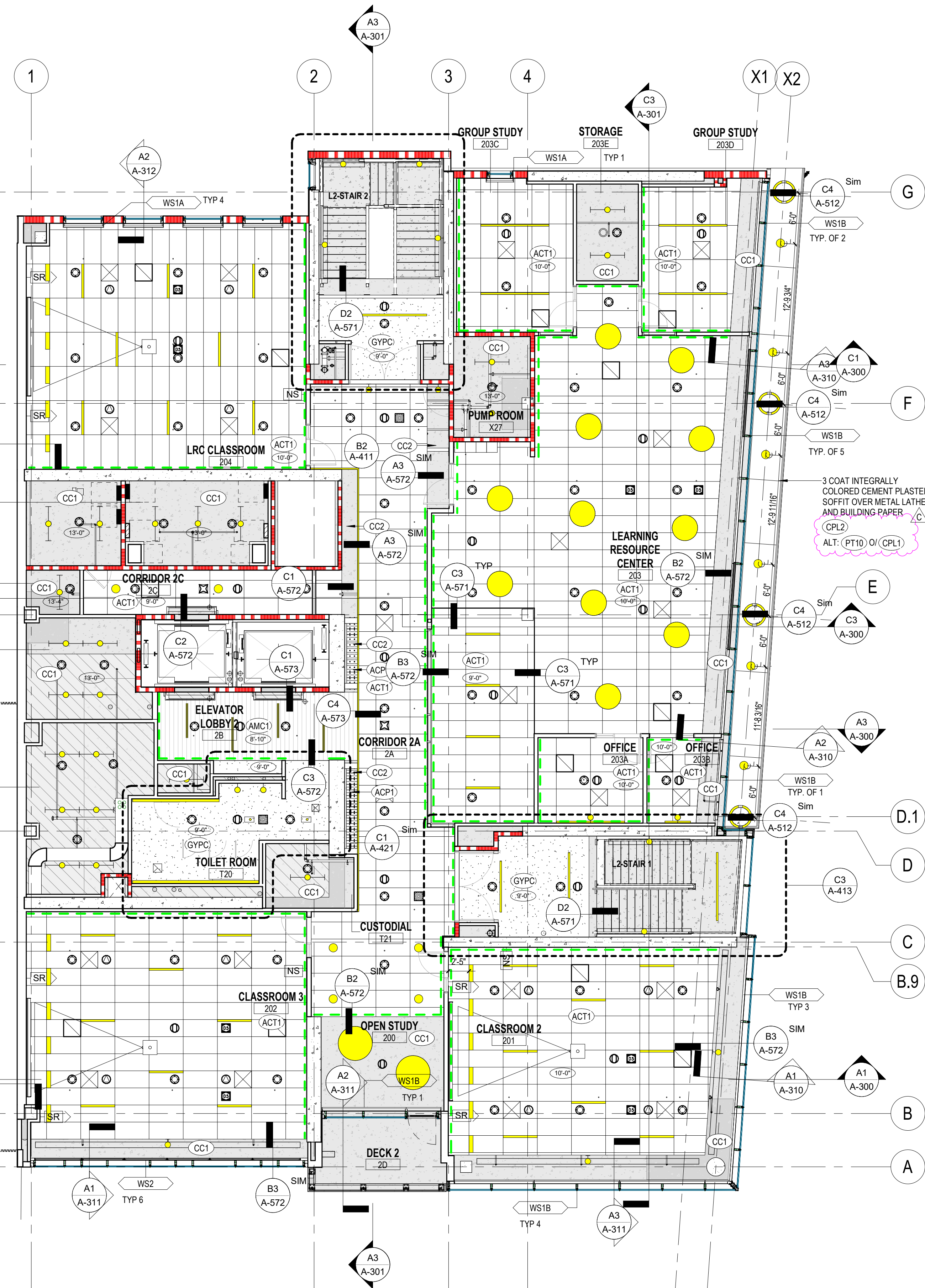
C

B

A



**A1** LEVEL 1 - REFLECTED CEILING PLAN  
1/8" = 1'-0"



**A3** LEVEL 2 - REFLECTED CEILING PLAN  
1/8" = 1'-0"

**LEGEND**

- PARTITION - NON RATED
- PARTITION (1-HOUR RATED)
- PARTITION (2-HOUR RATED)
- PARTITION (3-HOUR RATED)
- CEILING FIXED EDGE SYMBOL  
GYPC - SEE DETAIL C2A-570  
ACT1/ACT2/ACP1/AMC1 - SEE DETAIL C2A-570 (ALW1 SIMILAR)
- ACT1  
ACOUSTICAL  
CEILING GRID - 2x4
- GYB BD CEILING
- ALW1  
ACOUSTICAL LINEAR WOOD  
CEILING
- AMC1  
ACOUSTICAL LINEAR METAL  
CEILING
- OPEN CEILING. SEE FINISH  
PLANS A-611, A-612 & A-613,  
AND SCHEDULE A-810 FOR  
FINISH AT EACH OPEN  
CEILING LOCATION
- CEILING ELEVATION
- CEILING FINISH TAG
- EXIT SYMBOL
- EXHAUST AIR REGISTER
- RETURN AIR REGISTER
- SUPPLY AIR REGISTER
- SUPPLY AIR REGISTER
- MECO. SOLAR SHADES, SOLAR &  
BLACKOUT AT ANTHROPOLOGY  
AND ART CLASSROOMS
- DAYLIGHT SENSOR, SED
- OCCUPANCY SENSOR, SED
- SPEAKER, SEE AUDIOVISUAL DWGS
- 1-WAY CAMERA, SEE ELEC  
SECURITY DWGS
- 3-WAY CAMERA, SEE ELEC  
SECURITY DWGS
- 4-WAY CAMERA, SEE ELEC  
SECURITY DWGS
- MOTION DETECTOR SENSOR,  
SEE ELEC SECURITY DWGS
- GLASS BREAK SENSOR,  
SEE ELEC SECURITY DWGS
- FIRE SPRINKLER, SEE FIRE  
PROTECTION DWGS
- (F1) LIGHT FIXTURE, SED
- (F3) LIGHT FIXTURE, SED
- (F4 OR F5 OR F13 OR F25 OR F29)  
LIGHT FIXTURE, SED
- (F6) LIGHT FIXTURE, SED
- (F8 OR F9) LIGHT FIXTURE, SED
- (F12) LIGHT FIXTURE, SED
- (F14 OR F17 OR F38) LIGHT FIXTURE, SED
- (F15) LIGHT FIXTURE, SED
- (F22) LIGHT FIXTURE, SED
- (F24A OR F24B) LIGHT FIXTURE, SED
- (F30) LIGHT FIXTURE, SED
- (F32) LIGHT FIXTURE, SED
- (F33 OR F37) LIGHT FIXTURE, SED
- (F34 OR F35 OR F41) LIGHT FIXTURE,  
SED
- (F36) LIGHT FIXTURE, SED
- (F39) LIGHT FIXTURE, SED

**SHEET NOTES**

1. SED & SHEETS AC110, AC111, AC112 FOR LIGHTING TYPES AND LAYOUTS. NOT ALL LIGHTS ARE SHOWN ON ROPS. LIGHTING TYPES ARE TYPICAL PER SPACE TYPE AND SHOULD BE INFERRED FOR SIMILAR SPACES.
2. NOT ALL FIRE SPRINKLERS SHOWN ON ROPS. SEE FIRE PROTECTION DWGS.
3. REFER TO SPECS FOR WINDOW COVERINGS. WINDOW COVERINGS TYPICAL AT ALL CLASSROOMS AND OFFICES ADJOINING EXTERIOR GLAZING.
4. ON ROOMS WITH NO CEILINGS, IT IS TO BE EXPOSED CONCRETE.
5. CEILING TYPE ACT1 IN ROOM TYPE "OFFICE" & "EXAM" ARE CENTERED EACH WAY IN ROOM AS SHOWN ON RCP UN, TYPICAL.
6. AT CORRIDORS WHERE THERE IS NO CEILING WALLS ARE TO BE PAINTED PT1 FULL HEIGHT AS WELL AS ALL EXPOSED MEP AND UNDERSIDE OF SLAB FOR 4'-0" MIN OVERSPRAY AREA. DEFAULT CEILING HT IS 9'-0" AFF UN.
- 7.

**SHEET TITLE:**

**PERALTA COMMUNITY COLLEGE DISTRICT  
BERKELEY CITY COLLEGE**  
2118 MILVIA STREET  
BERKELEY, CA 94704

**BCC WEST**

SHEET TITLE:  
**REFLECTED CEILING PLANS - LEVELS 1 & 2**

SCALE: 1/8" = 1'-0"  
PROJECT NUMBER: 21415

SHEET NUMBER: **AC110**

DSA APPROVAL

**RATCLIFF**  
5856 Doyle Street  
Emeryville, CA 94608  
Tel 510 899 6400  
www.ratcliffarch.com



ISSUE SCHEDULE	NO.	DATE
Bid Addendum 2	B	07/25/22
Bid Addendum 6	C	08/10/22

07/18/2022 DSA SUBMITTAL & BID SET

OPENING SCHEDULE - DOORS

MARK	WIDTH	HEIGHT	RATING	DOOR			FRAME					HDW GROUP	GLAZE TYPE	REMARKS		
				TYPE	MATL	FINISH	TYPE	HEAD	JAMB	SILL	MATL				FINISH	
2D-1	3'-3"	9'-0"	NR	FG	AL	HPC	SEE REMARKS	1/CW451	S66/CW406	2/CW451	AL	HPC	02	GL-05	CR, CURTAINWALL - SPEC 08413	
3D-1	3'-3"	9'-0"	NR	FG	AL	HPC	SEE REMARKS	1/CW451	S66/CW406	2/CW451	AL	HPC	02	GL-05	CR, CURTAINWALL - SPEC 08413	
4D-1	3'-0"	7'-0"	NR	FG	AL	HPC	SEE REMARKS	1/CW451 SIM	S66/CW406 SIM	2/CW451	AL	HPC	06	GL-05	CR, CURTAINWALL - SPEC 08413	
5D-1	3'-3"	9'-0"	NR	FG	AL	HPC	SEE REMARKS	1/CW451	S66/CW406	2/CW451	AL	HPC	06	GL-05	CR, CURTAINWALL - SPEC 08413	
6D-1	6'-0"	9'-0"	NR	2FG	AL	HPC	SEE REMARKS	1/CW451	S66/CW406	2/CW451	AL	HPC	08	GL-05	PH, CR, CURTAINWALL - SPEC 08413	
101-1	6'-0"	10'-4 1/2"	NR	2FG	AL	HPC	SEE REMARKS	1/CW451	S66/CW406	A1/A-443	AL	HPC	07	GL-05	AL, PH, CR, CURTAINWALL - SPEC 08413	
101B-1	3'-0"	7'-0"	NR	F	AL	PTD	SEE REMARKS	D2/A-561	B1/A-561	C2/A-580	AL	PTD	17	-	CR	
102-1	8'-0"	9'-0"	NR	2FRMLS	GL	TRANS	1	D2/A-561	B1/A-561	C2/A-580	AL	PTD	33	-	GL-08	
103-1	3'-0"	7'-0"	NR	FG	AL	HPC	SEE REMARKS	D2/A-568	B1/A-568	C2/A-580	AL	HPC	19	GL-07	CR, INT STOREFRONT - SPEC 08413	
103A-1	3'-0"	7'-0"	NR	FG	AL	HPC	SEE REMARKS	D2/A-568	B1/A-568	C2/A-580	AL	HPC	12	GL-10	INT STOREFRONT - SPEC 08413	
103B-1	3'-0"	7'-0"	NR	FG	AL	HPC	SEE REMARKS	D2/A-568	B1/A-568	C2/A-580	AL	HPC	44	GL-07	INT STOREFRONT - SPEC 08413	
103B-8	2'-0"	2'-0"	NR	-	GFRG	PTD	-	-	-	-	AL	PTD	-	-	SPEC 083113	
103C-1	3'-0"	7'-0"	NR	F	AL	TRANS	1	D2/A-561	D2/A-561	-	AL	PTD	13	-	-	
104-1	3'-0"	7'-0"	NR	F	AL	TRANS	4	D2/A-568	C2/A2/A-568	C2/A-580	AL	PTD	18	-	CR	
105-1	3'-0"	7'-0"	NR	FG	AL	PTD	TRANS	4	D2/A-568	C2/A2/A-568	C1/A-580	AL	PTD	19	GL-10	CR
201-1	3'-0"	7'-0"	NR	F	AL	TRANS	4	D2/A-568	C2/A2/A-568	C2/A-580	AL	PTD	18	-	CR	
202-1	3'-0"	7'-0"	NR	F	AL	TRANS	4	D2/A-568	C2/A2/A-568	C2/A-580	AL	PTD	18	-	CR	
203-1	3'-0"	7'-0"	NR	FG	AL	HPC	SEE REMARKS	D2/A-568	C2/A2/A-568	C1/A-580	AL	HPC	23	GL-10	CR	
203-2	3'-0"	7'-0"	NR	FG	AL	HPC	SEE REMARKS	D2/A-562	C2/A2/A-568	C1/A-580	AL	HPC	23	GL-10	PH, CR, INT STOREFRONT - SPEC 08413	
203A-1	3'-0"	7'-0"	NR	F	AL	TRANS	8	D2/A-568	C2/A2/A-568	-	AL	PTD	12	GL-10	CR	
203B-1	3'-0"	7'-0"	NR	F	AL	TRANS	8	D2/A-568	C2/A2/A-568	-	AL	PTD	12	GL-10	CR	
203C-1	3'-0"	7'-0"	NR	FG	AL	TRANS	4	D2/A-568	C2/A2/A-568	-	AL	PTD	12	GL-10	CR	
203D-1	3'-0"	7'-0"	NR	FG	AL	TRANS	4	D2/A-568	C2/A2/A-568	-	AL	PTD	12	GL-10	CR	
203E-1	3'-0"	7'-0"	NR	F	AL	TRANS	1	D2/A-568	C2/A2/A-568	-	AL	PTD	13	-	-	
204-1	3'-0"	7'-0"	NR	F	AL	TRANS	4	D2/A-568	C2/A2/A-568	C2/A-580	AL	PTD	18	-	CR	
301-1	3'-0"	7'-0"	NR	F	AL	TRANS	4	D2/A-568	C2/A2/A-568	C2/A-580	AL	PTD	19	-	CR	
302-1	3'-0"	7'-0"	NR	F	AL	TRANS	4	D2/A-568	C2/A2/A-568	C2/A-580	AL	PTD	18	-	CR	
302A-1	3'-0"	7'-0"	NR	F	AL	TRANS	4	D2/A-568	C2/A2/A-568	C2/A-580	AL	PTD	13	-	CR	
302B-1	3'-0"	7'-0"	NR	F	AL	TRANS	1	D2/A-568	C2/A2/A-568	-	AL	PTD	13	-	-	
303-1	3'-0"	7'-0"	NR	F	AL	TRANS	4	D2/A-568	C2/A2/A-568	C1/A-580	AL	PTD	17	-	CR	
303A-1	3'-0"	7'-0"	NR	F	AL	TRANS	SEE REMARKS	D2/A-561	C2/A2/A-568	-	AL	HPC	12	-	INT STOREFRONT - SPEC 08413	
303B-1	3'-0"	7'-0"	NR	FG	AL	TRANS	SEE REMARKS	D2/A-568	C2/A2/A-568	D2/A-580	AL	HPC	12	GL-10	INT STOREFRONT - SPEC 08413	
303C-1	3'-0"	7'-0"	NR	FG	AL	TRANS	SEE REMARKS	D2/A-568	C2/A2/A-568	D2/A-580	AL	HPC	12	GL-10	INT STOREFRONT - SPEC 08413	
303E-1	3'-0"	7'-0"	NR	F	AL	TRANS	SEE REMARKS	D2/A-568	C2/A2/A-568	-	AL	HPC	12	-	INT STOREFRONT - SPEC 08413	
303F-1	3'-0"	7'-0"	NR	F	AL	TRANS	SEE REMARKS	D2/A-568	C2/A2/A-568	-	AL	HPC	12	-	INT STOREFRONT - SPEC 08413	
304-1	3'-0"	7'-0"	NR	F	AL	TRANS	4	D2/A-568	C2/A2/A-568	C2/A-580	AL	PTD	12	-	CR	
305-1	3'-0"	7'-0"	NR	F	AL	TRANS	4	D2/A-568	C2/A2/A-568	C2/A-580	AL	PTD	18	-	CR	
401-1	3'-0"	7'-0"	NR	FG	AL	PTD	TRANS	4	D2/A-568	C2/A2/A-568	C1/A-580	AL	PTD	18	GL-10	CR
401B-1	3'-0"	7'-0"	NR	F	AL	TRANS	4	D2/A-568	C2/A2/A-568	-	AL	PTD	12	-	-	
401C-1	3'-0"	7'-0"	NR	F	AL	TRANS	4	D2/A-568	C2/A2/A-568	-	AL	PTD	12	-	-	
401D-1	3'-0"	7'-0"	NR	F	AL	TRANS	4	D2/A-568	C2/A2/A-568	-	AL	PTD	12	-	-	
401E-1	3'-0"	7'-0"	NR	F	AL	TRANS	4	D2/A-568	C2/A2/A-568	-	AL	PTD	12	-	-	
402-1	3'-0"	7'-0"	NR	N	AL	TRANS	1	D2/A-568	C2/A2/A-568	-	AL	PTD	44	GL-10	CR	
402-2	3'-0"	7'-0"	NR	F	AL	TRANS	4	D2/A-568	C2/A2/A-568	C2/A-580	AL	PTD	25	-	CR	
402A-1	3'-0"	7'-0"	NR	G	AL	TRANS	4	D2/A-568	C2/A2/A-568	C2/A-580	AL	PTD	19	GL-10	CR	
402B-1	3'-0"	7'-0"	NR	AL	HPC	SEE REMARKS	D2/A-562	B1/A-568	C2/A-580	AL	HPC	17	GL-10	CR, INT STOREFRONT - SPEC 08413		
403-1	3'-0"	7'-0"	NR	F	AL	TRANS	4	D2/A-568	C2/A2/A-568	-	AL	PTD	25	-	PH, CR	
403-2	3'-0"	7'-0"	NR	F	AL	TRANS	4	D2/A-568	C2/A2/A-568	-	AL	PTD	45	-	PH	
403-3	3'-0"	7'-0"	NR	F	AL	TRANS	3	D2/A-568	C2/A2/A-568	-	AL	PTD	29	-	-	
404-1	3'-0"	7'-0"	NR	F	AL	TRANS	4	D2/A-568	C2/A2/A-568	C2/A-580	AL	PTD	18	-	CR	
405-1	3'-0"	7'-0"	NR	F	AL	TRANS	4	D2/A-568	C2/A2/A-568	-	AL	PTD	25	-	PH, CR	
405B-1	4'-0"	7'-0"	NR	F	AL	TRANS	1	D2/A-568	C2/A2/A-568	-	AL	PTD	16	-	-	
405B-2	4'-0"	7'-0"	NR	F	AL	TRANS	1	D2/A-568	C2/A2/A-568	-	AL	PTD	16	-	-	
501-1	3'-0"	7'-0"	NR	F	AL	TRANS	4	D2/A-568	C2/A2/A-568	C2/A-580	AL	PTD	24	-	PH, CR	
502-1	3'-0"	7'-0"	NR	F	AL	TRANS	4	D2/A-568	C2/A2/A-568	C2/A-580	AL	PTD	25	-	PH, CR	
503-1	3'-0"	7'-0"	NR	FG	AL	TRANS	4	D2/A-568	C2/A2/A-568	C1/A-580	AL	PTD	18	GL-10	CR	
503-2	3'-0"	7'-0"	NR	FG	AL	HPC	SEE REMARKS	D2/A-568	B1/A-568	-	AL	HPC	21	GL-10	CR, INT STOREFRONT - SPEC 08413	
503A-1	3'-0"	7'-0"	NR	FG	AL	HPC	SEE REMARKS	D2/A-568	B1/A-568	-	AL	HPC	12	GL-10	INT STOREFRONT - SPEC 08413	
503B-1	3'-0"	7'-0"	NR	FG	AL	HPC	SEE REMARKS	D2/A-568	B1/A-568	-	AL	HPC	12	GL-10	INT STOREFRONT - SPEC 08413	
503C-1	3'-0"	7'-0"	NR	FG	AL	HPC	SEE REMARKS	D2/A-568	B1/A-568	-	AL	HPC	12	GL-10	INT STOREFRONT - SPEC 08413	
503E-1	3'-0"	7'-0"	NR	FG	AL	HPC	SEE REMARKS	D2/A-568	B1/A-568	-	AL	HPC	12	GL-10	INT STOREFRONT - SPEC 08413	
503F-1	3'-0"	7'-0"	NR	FG	AL	HPC	SEE REMARKS	D2/A-568	B1/A-568	-	AL	HPC	12	GL-10	INT STOREFRONT - SPEC 08413	
503G-1	3'-0"	7'-0"	NR	FG	AL	TRANS	4	D2/A-568	C2/A2/A-568	-	AL	PTD	12	GL-10	CR	
503H-1	3'-0"	7'-0"	NR	FG	AL	TRANS	4	D2/A-568	C2/A2/A-568	-	AL	PTD	12	GL-10	CR	
503I-1	3'-0"	7'-0"	NR	FG	AL	HPC	SEE REMARKS	D2/A-568	B1/A-568	-	AL	HPC	12	GL-10	INT STOREFRONT - SPEC 08413	
503J-1	3'-0"	7'-0"	NR	FG	AL	HPC	SEE REMARKS	D2/A-568	B1/A-568	-	AL	HPC	12	GL-10	INT STOREFRONT - SPEC 08413	
503K-1	3'-0"	7'-0"	NR	FG	AL	HPC	SEE REMARKS	D2/A-568	B1/A-568	-	AL	HPC	12	GL-10	INT STOREFRONT - SPEC 08413	
503L-1	3'-0"	7'-0"	NR	FG	AL	HPC	SEE REMARKS	D2/A-568	B1/A-568	-	AL	HPC	12	GL-10	INT STOREFRONT - SPEC 08413	
503M-1	3'-0"	7'-0"	NR	FG	AL	HPC	SEE REMARKS	D2/A-568	B1/A-568	-	AL	HPC	12	GL-10	INT STOREFRONT - SPEC 08413	
504-1	3'-0"	7'-0"	NR	FG	AL	TRANS	4	D2/A-568	C2/A2/A-568	C1/A-580	AL	PTD	18	GL-10	CR	
504A-1	3'-0"	7'-0"	NR	F	AL	TRANS	1	D2/A-568	C2/A2/A-568	-	AL	PTD	12	-	-	
504B-1	3'-0"	7'-0"	NR	F	AL	TRANS	1	D2/A-568	C2/A2/A-568	-	AL	PTD	12	-	-	
504C-1	3'-0"	7'-0"	NR	F	AL	TRANS	1	D2/A-568	C2/A2/A-568	D2/A-580	AL	PTD	29	-	-	
504D-1	3'-0"	7'-0"	NR	F	AL	TRANS	1	D2/A-568	C2/A2/A-568	-	AL	PTD	13	-	-	
504E-1	3'-0"	7'-0"	NR	F	AL	TRANS	1	D2/A-568	C2/A2/A-568	-	AL	PTD	12	-	-	
504F-1	3'-0"	7'-0"	NR	F	AL	TRANS	1	D2/A-568	C2/A2/A-568	-	AL	PTD	12	-	-	
601-1	3'-0"	7'-0"	NR	F	AL	TRANS	4	D2/A-568	C2/A2/A-568	D5/A-580	AL	PTD	18	-	CR	
602-1	3'-0"	7'-0"	20 MIN	F	AL	TRANS	1	D2/A-568	C2/A2/A-568	-	AL	PTD	17	-	CR	
603-1	3'-0"	7'-0"	NR	FG	AL	HPC	SEE REMARKS	D2/A-568	B1/A-568	-	AL	HPC	44	GL-10	INT STOREFRONT - SPEC 08413	
603A-1	3'-0"	7'-0"	NR	F	AL	TRANS	4	D2/A-568	C2/A2/A-568	-	AL	PTD	12	-	-	
603B-1	3'-0"	7'-0"	NR	F	AL	TRANS	4	D2/A-568	C2/A2/A-568	-	AL	PTD	12	-	-	
603C-1	3'-0"	7'-0"	NR	F	AL	TRANS	4	D2/A-568	C2/A2/A-568	-	AL	PTD	12			

GENERAL NOTES

- 1. ALL PAINTS, COATINGS AND CEILING MATERIALS MUST MEET THE LEED V4.1 LOW EMITTING MATERIALS REQUIREMENTS.
- 2. ALL FLOORING MUST MEET THE LEED V4.1 LOW EMITTING MATERIALS REQUIREMENT.

DSA APPROVAL

**RATCLIFF**  
 5856 Doyle Street  
 Emeryville, CA 94608  
 Tel 510 899 6400  
 www.ratcliffarch.com



ISSUE SCHEDULE	NO.	DATE
Bid Addendum 1	A	06/29/22
Bid Addendum 2	B	07/25/22
Bid Addendum 6	C	08/10/22

**PERALTA COMMUNITY COLLEGE DISTRICT BERKELEY CITY COLLEGE**  
 2118 MILVIA STREET  
 BERKELEY, CA. 94704

**BCC WEST**

SHEET TITLE:  
**FINISH SCHEDULE**

SCALE:  
 PROJECT NUMBER: 21415

SHEET NUMBER: **A-610**

MATERIALS LIST

CODE	MATERIAL CATEGORY	MFR	PRODUCT	COLOR	FINISH	DIMENSIONS	EDGE PROFILE	INSTALLATION METHOD	BACKING SYSTEM	COMMENTS
<b>BASE</b>										
BB1	BULLNOSE BASE	CROSSVILLE	READY TO WEAR	AV317 FLANNEL SUIT	-	4 X 24 BULLNOSE	-	-	-	-
RB1	RUBBER BASE	JOHNSONITE	TIGHTLOCK TOP SET	29 MOON ROCK	-	4" H	-	TIGHTLOCK REQUIRED SEQUENCING WITH FLOORING DURING INSTALLATION CONTRACTOR TO CHECK WITH MNFRS RECOMMENDATIONS FOR INSTALLATION	-	BASE TO BE FLUSH AT CONCRETE WALLS, CAST IN CONCRETE W/ 3/4" X 4" WOOD BLOCKING
RB2	RUBBER	JOHNSONITE	TIGHTLOCK CARPET SET	29 MOON ROCK	-	4-1/2" H	-	PER MFR RECOMMENDATIONS, PROVIDE SHOP DRAWING WITH SUBMITTAL	-	TIGHTLOCK REQUIRED SEQUENCING WITH FLOORING DURING INSTALLATION CONTRACTOR TO CHECK WITH MNFRS RECOMMENDATIONS FOR INSTALLATION
<b>CASEWORK</b>										
PL1	HIGH PRES. LAM	FORMICA	WHEAT STRAND 6212-58	-	MATTE	-	-	-	-	-
PL2	HIGH PRES. LAM	WILSONART	HIGH LINE 7970K-18	-	-	-	-	-	-	-
PL3	HIGH PRESSURE LAMINATE	FORMICA	PEARL 934-58	-	MATTE	-	-	-	-	-
SSF1	SOLID SURFACE MATERIAL	HIMACS	-	VENUS	-	-	-	-	-	-
SSF2	SOLID SURFACE MATERIAL	HIMACS	-	MOON HAZE G118	-	-	-	-	-	-
SSF3	SOLID SURFACE MATERIAL	CORIAN	-	BISQUE	-	-	-	-	-	-
<b>CEILING</b>										
ACP1	ACOUSTIC CEILING BAFFLE	KIREI	ZIGGY	551	-	PER RCP	-	CABLE HUNG WITH LOOPS ATTACHED TO THE OVAL EXTRUSION	-	CONCRETE CEILING ABOVE FINISHED WITH CC2
ACT1	ACCOUSTICAL CEILING TILE	ARMSTRONG	ULTIMA HIGH NRC SQUARE LAY IN	WHITE	-	2' X 4'	-	-	-	-
ALW1	LINEAR WOOD GRILLE CEILING	RULON	QUARTER SAWN	WHITE BIRCH (STAIN "A"; LECHE; STAIN "B"; CLEAR; STAIN "C"; APRICOT)	CLEAR MATTE	PER RCP & DETAILS	-	PER MFR RECOMMENDATION WITH SHOP DRAWING SUBMITTAL	BLACK THEATER CLOTH	NOTE: SEE DETAILS FOR STAIN TYPE APPLICATION
AMC1	LINEAR METAL CEILING	CEILING PLUS	PLANK	S22 OAKLINE	-	-	-	-	-	-
CC1	CONCRETE CEILING, UNFINISHED	-	-	-	-	-	-	-	-	-
CC2	CONCRETE CEILING, PAINTED	-	-	PT1, SEE WALL FINISHES	MATTE	-	-	-	-	BACK OF HOUSE AREAS, UNOCCUPIED OVERSPRAY 4" O' BEYOND EDGE OF DROP CEILING AT EXPOSED CONCRETE CEILING AREAS
CPL2	CEMENT PLASTER w/ ACRYLIC FINISH	-	-	TO BE SELECTED	INTEGRALLY COLORED ACRYLIC PER SPEC SECTION 09 24 00	-	-	-	-	EXTERIOR SOFFITS - SEE "PT10" FOR BID ALTERNATE
GYP	GYP BOARD CEILING, PAINTED	SHERWIN WILLIAMS	SW 7007 CEILING BRIGHT WHITE	-	EGGSHELL	-	-	-	-	GYPC IN ALL TOILET ROOMS WILL HAVE SEMI-GLOSS FINISH
PT10	PAINT, ACCENT, PLASTER SOFFITS	SHERWIN WILLIAMS	ZERO-VOC	TO BE SELECTED	SEMI-GLOSS	-	-	-	-	ALTERNATE: EXTERIOR SOFFITS OVER "CPL1" CEMENT PLASTER IN LIEU OF "CPL2"
<b>FLOOR</b>										
CG1	CORNER GUARD	CONSTRUCTION SPECIALTIES	304 STAINLESS STEEL WITH #4 SATIN FINISH	-	-	FULL HEIGHT; 2' x 2'	-	-	-	UP TO 7' H ON FIRST FLOOR
CPT1A	ENTRYWAY SYSTEM	MATS, INC.	NUWAY	ALUMINIUM METAL WIPER BLADES - CHARCOAL CARPET WIPER BLADES OPEN	ALUMINIUM	7/16" THICKNESS+ + 5/16" ARDEX FILL FOR FLUSH INSTALLATION	SQUARE	PER MFR RECOMMENDATIONS, PROVIDE SHOP DRAWING WITH SUBMITTAL	OPEN CONSTRUCTION	-
CPT1B	WALKOFF CARPET TILE	TARKETT	02578 ABRASIVE ACTION II	1910 WINTER GRAY	-	24" X 24"	-	QUARTER TURN; GUELDOWN	ETHOS MODULAR WITH OMNICOAT TECHNOLOGY	-
CPT2	CARPET TILE	TARKETT	COLORMAP	42833 DESERT PAVEMENT	-	24" X 24"	-	VERTICAL ASHLAR; PER MFR RECOMMENDATIONS, PROVIDE SHOP DRAWING WITH SUBMITTAL	ETHOS MODULAR WITH OMNICOAT TECHNOLOGY	-
CPT3	CARPET TILE	TARKETT	DOUBLE BOUCLE A0010	COOL GRAPHITE 74207	-	24" X 24"	-	VERTICAL ASHLAR; PER MFR RECOMMENDATIONS, PROVIDE SHOP DRAWING WITH SUBMITTAL	ETHOS MODULAR WITH OMNICOAT TECHNOLOGY	-
CPT4	CARPET TILE	TARKETT	04655 ANGULATE	22101 LIGHT MOVEMENT	-	24" X 24"	-	MONOLITHIC; PER MFR RECOMMENDATIONS, PROVIDE SHOP DRAWING WITH SUBMITTAL	ETHOS MODULAR WITH OMNICOAT TECHNOLOGY	-
CPT5	CARPET TILE	TARKETT	04655 ANGULATE	22105 LUMINAIRE	-	24" X 24"	-	MONOLITHIC; PER MFR RECOMMENDATIONS, PROVIDE SHOP DRAWING WITH SUBMITTAL	ETHOS MODULAR WITH OMNICOAT TECHNOLOGY	-
CT1	CERAMIC FLOOR TILE	CROSSVILLE	READY TO WEAR	AV317 FLANNEL SUIT	-	12" X 24"	-	MONOLITHIC; PER MFR RECOMMENDATIONS, PROVIDE SHOP DRAWING WITH SUBMITTAL	-	CORIAN COLOR "CONCRETE" AT TILE/CONCRETE THRESHOLD
FC1	FINISHED CONCRETE	FLOOR SEAL TECHNOLOGY	MIRRORCRETE DYE	-	-	PER FINISH PLANS	-	PER MFR RECOMMENDATIONS, PROVIDE SHOP DRAWING WITH SUBMITTAL	-	-
FC2	FINISHED CONCRETE	-	-	-	-	-	-	-	-	NOT USED
RES1	FINISHED CONCRETE	FORBO	MARMOLEUM STRIATO	SILT STONE 5256	-	108" x 79"	-	PER MFR RECOMMENDATIONS, PROVIDE SHOP DRAWING WITH SUBMITTAL	-	PVC FREE
SC1	SEALED CONCRETE	-	-	-	-	PER FINISH PLANS	-	PER MFR RECOMMENDATIONS, PROVIDE SHOP DRAWING WITH SUBMITTAL	-	SEE SPEC. SECTION 09 97 23
<b>STAIR FINISHES</b>										
C4	CONCRETE TREAD AND STAIR LANDING	-	-	-	STEEL TROWEL	-	-	-	-	EXPOSED STEEL RAILINGS, HANDRAILS
PT1	PAINT, GENERAL	SHERWIN WILLIAMS	ZERO-VOC	SW7551 GREEK VILLA	SEMI-GLOSS	-	-	-	-	(A.L.T. HANDRAIL FINISH: STAINLESS STEEL TYPE 304)
<b>WALL</b>										
C1	CONCRETE WALLS & COLUMNS, UNPAINTED	-	-	-	AS-CAST PER SPEC SECTIN 03 30 00	-	-	-	-	BACK OF HOUSE SERVICE AREAS AND FURRED WALLS & COLUMNS
C2	CONCRETE WALLS & COLUMNS, PAINTED	-	-	-	AS-CAST PER SPEC SECTION 03 30 00	-	-	-	-	BACK OF HOUSE SERVICE AREA OFFICES
C3	ARCHITECTURAL EXPOSED CONCRETE WALLS & COLUMNS	-	-	-	GROUT-CLEANED RUBBED FINISH PER SPEC SECTION 03 30 10	-	-	-	-	ALL PUBLIC SPACE SHEARWALLS, LINO
C3A	ARCHITECTURAL EXPOSED CONCRETE WALLS	-	-	-	GROUT-CLEANED RUBBED FINISH PER SPEC SECTION 03 30 10	-	-	-	-	ENTRANCE (101) & STUDENT LOUNGE (102)
C3B	ARCHITECTURAL EXPOSED CONCRETE COLUMNS	-	-	-	AS-CAST PER SPEC SECTION 03 30 10	-	-	-	-	INTERIOR & EXTERIOR EXPOSED ROUND COLUMNS, PUBLIC, INTERIOR SQUARE COLUMNS
CG1	CORNER GUARD	CONSTRUCTION SPECIALTIES	304 STAINLESS STEEL WITH #4 SATIN FINISH	-	-	FULL HEIGHT; 2' x 2'	-	-	-	UP TO 7' H ON FIRST FLOOR
CPL1	CEMENT PLASTER w/ ACRYLIC FINISH	-	-	TO BE SELECTED	INTEGRALLY COLORED ACRYLIC PER SPEC SECTION 09 24 00	-	-	-	-	EXTERIOR WALL, TYP FIELD COLOR LON
CT2	CERAMIC WALL TILE	CROSSVILLE	READY TO WEAR	AV311 BUTTONED UP	-	12" X 24"	-	MONOLITHIC; PER MFR RECOMMENDATIONS, PROVIDE SHOP DRAWING WITH SUBMITTAL	-	-
DEW	DRY ERASE WALL COVERING	KOROSEAL	WALL-TALKERS MAGRIT M2PR-00	WHITE	LOW GLOSS DRY ERASE FILM	ROLLED 48"W x 0.61 mm	-	ADHERED; FINISH ALL EXPOSED EDGES WITH 1/2" ALUM. FLAT TRIM, WHITE	-	-
DEWP	DRY ERASE WALL COVERING, PROJECTABLE	KOROSEAL	WALL-TALKERS MAGRIT M2PR-00	WHITE	LOW GLOSS DRY ERASE FILM	ROLLED 48"W x 0.61 mm	-	ADHERED; FINISH ALL EXPOSED EDGES WITH 1/2" ALUM. FLAT TRIM, WHITE	-	-
PT1	PAINT, GENERAL	SHERWIN WILLIAMS	ZERO-VOC	SW7551 GREEK VILLA	SEMI-GLOSS	-	-	-	-	-
PT2	PAINT, ACCENT	SHERWIN WILLIAMS	ZERO-VOC	SW7037 BALANCED BEIGE	SEMI-GLOSS	-	-	-	-	-
PT3	PAINT, ACCENT	SHERWIN WILLIAMS	ZERO-VOC	SW9152 LET IT RAIN	SEMI-GLOSS	-	-	-	-	-
PT4	PAINT, ACCENT	SHERWIN WILLIAMS	ZERO-VOC	SW9141 WATERLOO	SEMI-GLOSS	-	-	-	-	-
PT5	PAINT, ACCENT	SHERWIN WILLIAMS	ZERO-VOC	SW6369 TASSEL	SEMI-GLOSS	-	-	-	-	-
PT6	PAINT, ACCENT	SHERWIN WILLIAMS	ZERO-VOC	SW7682 BEE'S WAX	SEMI-GLOSS	-	-	-	-	-
PT7	PAINT, ACCENT	SHERWIN WILLIAMS	ZERO-VOC	SW6365 ALCHEMY	SEMI-GLOSS	-	-	-	-	-
PT8	PAINT, ACCENT	SHERWIN WILLIAMS	ZERO-VOC	TO BE SELECTED	SEMI-GLOSS	-	-	-	-	SOUTH STAIR TOWER, NORTH WALL
PT9	PAINT, ACCENT	SHERWIN WILLIAMS	ZERO-VOC	TO BE SELECTED	SEMI-GLOSS	-	-	-	-	ALTERNATE: OVER EXTERIOR, CEMENT PLASTER AT LOCATIONS INDICATED ON DRAWINGS
<b>WALL PANEL</b>										
TACK	TACKABLE SURFACE	WOLF GORDON	COLORLED BULLETIN BOARD COOK	60H3225760 #2280 - MUSHROOM MEDLEY	-	PER ELEVATIONS	-	ADHERED	JUTE	ALUMINIUM ANGLE FRAMED
WPL1	ACOUSTICAL	RULON	QUARTER SAWN	WHITE BIRCH	-	-	-	-	-	-
WPL2	TACKABLE FELT	SUTHERLAND FELT COMPANY	ARCHITECTURAL FELT	DB-03 MARBLE	-	PER ELEVATION	SQUARE	PER MFR RECOMMENDATIONS, PROVIDE SHOP DRAWING WITH SUBMITTAL	-	UNFRAMED
WPL3	ACOUSTICAL	KIREI	ECHOPANEL PRINT	TRIO 100	-	12mm THICK	-	ADHERED	-	-
WPL4	WALL PANEL	METEON	TRIO 100	OCHRE A06.3.5/ST	SATIN	3650 x 1860 (FF)	-	ADHERED	-	-
<b>WALL PROTECTION</b>										
CG1	CORNER GUARD	CONSTRUCTION SPECIALTIES	304 STAINLESS STEEL WITH #4 SATIN FINISH	-	-	FULL HEIGHT; 2' x 2'	-	-	-	UP TO 7' H ON FIRST FLOOR
WP1	WALL PROTECTION, SHEET	CONSTRUCTION SPECIALTIES	INPRO RIGID SHEET	-	SUEDE	.060" THICKNESS	-	MANUFACTURER'S STANDARD WATER-BASED, 50 g/L VOC MAXIMUM	-	3 ON EITHER SIDE OF MOP SINK AND 48" HIGH IN ALL JANITORS CLOSETS
<b>WINDOW SHADE</b>										
WS1A	SINGLE ROLL SYSTEM - MANUAL W/ LAM	MECHO SHADE	ECOVEIL 1350 SERIES	-	5% OPENESS FACTOR	-	-	-	-	PROVIDE 3" BOTTOM CLOSURE AND CLOSURE MOUNT W/ TILE SUPPORT AT ACT1 CEILINGS
WS1B	SINGLE ROLL SYSTEM - MANUAL W/ LAM	MECHO SHADE	ECOVEIL 1350 SERIES	-	5% OPENESS FACTOR	-	-	-	-	PROVIDE POCKET 4133 AND 3" BOTTOM CLOSURE AT EXPOSED CEILINGS
WS2	DUAL ROLL SYSTEM WITH BLACKOUT & VERTICAL SEAL - MANUAL	MECHO SHADE	ECOVEIL 1350 SERIES + EQUINOX 0100 SERIES	-	5% OPENESS FACTOR	-	-	-	-	BLACKOUT SHADIES AT ART AND ANTHROPOLOGY CLASSROOMS - PROVIDE VERTICAL ROLL STACK ARRANGEMENT, FASCIA AND (X) BOTTOM CLOSURE

D

C

B

A

07/18/2022 2:10:51 PM

07/18/2022 DSA SUBMITTAL & BID SET



D

C

B

A

GENERAL FINISH NOTES

- WALL FINISHES**
1. FINISH ALL WALL FINISHES AT INSIDE CORNER.
  2. ALL MECHANICAL ACCESSORIES THAT ARE PRIMED ONLY AND ACCESS DOORS ARE TO BE PAINTED TO MATCH SURROUNDING WALL. NOTIFY ARCHITECT FOR FINISHED ITEMS NOT MATCHING SURROUNDING WALL.
  3. ALL EXPOSED GYPSUM BOARD SURFACES TO BE PAINTED PT1 U.O.N.
  4. TYPICAL WALL PAINT FINISH IS PT1 SHERWIN WILLIAMS SW7551 GREEK VILLA.
  5. NON-PUBLIC, INTERIOR EXPOSED OR FURRED CONCRETE WALLS & COLUMNS FINISH WILL BE C1, U.O.N.
  6. ALL EXTERIOR & INTERIOR EXPOSED ARCHITECTURAL CONCRETE ROUND COLUMNS AND PUBLIC INTERIOR EXPOSED ARCHITECTURAL CONCRETE SQUARE COLUMNS WILL BE C3B, U.O.N.
- FLOOR FINISHES**
1. WHERE DIFFERING FLOOR FINISH MATERIALS MEET AT DOORS, THE SEAM SHALL OCCUR DIRECTLY BELOW THE CENTERLINE OF THE CLOSED DOOR U.O.N.
  2. DRAIN DIRECTION OF FLOORING MATERIAL TO BE CONSISTENT IN DIRECTION THROUGHOUT ENTIRE PROJECT. DO NOT QUARTER-TURN FLOORING MATERIAL UNLESS THE INSTALLATION METHOD HAS BEEN RECOMMENDED BY THE MANUFACTURER, I.E., CARPET TILE AND / OR WALK-OFF MAT.
  3. SUBMIT FLOOR SEAMING DIAGRAM FOR APPROVAL PRIOR TO PURCHASE OF MATERIAL.
  4. PROVIDE TRANSITION / REDUCER STIP AT ALL FLOOR MATERIAL CHANGES. IDENTIFY TRANSITION / REDUCER STRIPS IN SHOP DRAWINGS.
  5. WHERE DIFFERING FLOOR MATERIAL MEET, FEATHER SUBFLOOR TO ACCOMMODATE DIFFERENCES IN GAUGES OR SUB-FLOOR LEVEL.
  6. DO NOT SCALE THE DRAWINGS. THE CONTRACTOR IS RESPONSIBLE FOR TH SITE REVIEW AND VERIFICATION OF ALL QUANTITIES OF MATERIAL REQUIRED TO COMPLETE THE INSTALLATION.
  7. EXTEND RESILIENT FLOORING TO WALL UNDER COUNTER AND FACE OF CASEWORK TOE SPACE, TYP.
  8. ALL MATERIAL OF ONE PATTERN / COLOR SHALL BE THE SAME DYE LOT.
  9. RESILIENT BASE REQUIRES SEQUENCING WITH FLOORING CONTRACTOR TO CHECK WITH MNFRS RECOMMENDATIONS FOR INSTALLATION.
  10. ALL CONCRETE WALLS ARE EXPOSED / UNPAINTED UNLESS OTHERWISE NOTED.
  11. PROVIDE FRP WAINSCOT AT ALL CUSTODIAL CLOETS BEHIND MOP SINKS. 3'-0" LONG EACH SIDE X 4'-0" HIGH.
  12. PROVIDE 4'-0" HIGH FRP WAINSCOT BEHIND WASHER DRYER AT BUILDING STORAGE ROOM X47 AND EXTEND 3'-0" ON EACH SIDE.
  13. 1/8" SAW CUT WITH EPOXY FILL AT FC1 AND FC2. COLOR TO BE DETERMINED.

DSA APPROVAL

**RATCLIFF**

5856 Doyle Street  
Emeryville, CA 94608  
Tel 510 899 6400  
www.ratcliffarch.com



ISSUE SCHEDULE	NO.	DATE
Bid Addendum 1	A	06/29/22
Bid Addendum 2	B	07/25/22
Bid Addendum 6	C	08/10/22

FINISH LEGEND

- CPT1B
- CPT2
- CPT3
- CPT4
- CPT5
- RES1
- SC1
- CT1
- FC1

Name	Set
Ceiling Finish	
Wall Finish	
Door Finish	
Floor Finish	

**PERALTA COMMUNITY COLLEGE DISTRICT BERKELEY CITY COLLEGE**  
2118 MILVIA STREET  
BERKELEY, CA. 94704

**BCC WEST**

SHEET TITLE:

**FINISH PLANS - LEVELS 1 & 2**

SCALE: As indicated  
PROJECT NUMBER: 21415

SHEET NUMBER:

**A-611**



**A1 LEVEL 1 - FLOOR PLAN**  
1/8" = 1'-0"



**A2 LEVEL 2 - FLOOR PLAN**  
1/8" = 1'-0"

07/18/2022 DSA SUBMITTAL & BID SET

D

C

B

A



**A1** LEVEL 3 - FLOOR PLAN  
1/8" = 1'-0"



**A2** LEVEL 4 - FLOOR PLAN  
1/8" = 1'-0"

**GENERAL FINISH NOTES**

- WALL FINISHES**  
 1. FINISH ALL WALL FINISHES AT INSIDE CORNER.  
 2. ALL MECHANICAL ACCESSORIES THAT ARE PRIMED ONLY AND ACCESS DOORS ARE TO BE PAINTED TO MATCH SURROUNDING WALL. NOTIFY ARCHITECT FOR FINISHED ITEMS NOT MATCHING SURROUNDING WALL.  
 3. ALL EXPOSED GYPSUM BOARD SURFACES TO BE PAINTED PT1 U.O.N.  
 4. TYPICAL WALL PAINT FINISH IS PT1 SHERWIN WILLIAMS SW7551 GREEK VILLA.  
 5. NON-PUBLIC, INTERIOR EXPOSED OR FLURRED CONCRETE WALLS & COLUMNS FINISH WILL BE C1, U.N.O.  
 6. ALL EXTERIOR & INTERIOR EXPOSED ARCHITECTURAL CONCRETE ROUND COLUMNS AND PUBLIC INTERIOR EXPOSED ARCHITECTURAL CONCRETE SQUARE COLUMNS WILL BE C3B, U.N.O.
- FLOOR FINISHES**  
 1. WHERE DIFFERING FLOOR FINISH MATERIALS MEET AT DOORS, THE SEAM SHALL OCCUR DIRECTLY BELOW THE CENTERLINE OF THE CLOSED DOOR U.O.N.  
 2. DRAIN DIRECTION OF FLOORING MATERIAL TO BE CONSISTENT IN DIRECTION THROUGHOUT ENTIRE PROJECT. DO NOT QUARTER-TURN FLOORING MATERIAL UNLESS THE INSTALLATION METHOD HAS BEEN RECOMMENDED BY THE MANUFACTURER, I.E., CARPET TILE AND / OR WALK-OFF MAT.  
 3. SUBMIT FLOOR SEAMING DIAGRAM FOR APPROVAL PRIOR TO PURCHASE OF MATERIAL.  
 4. PROVIDE TRANSITION / REDUCER STIP AT ALL FLOOR MATERIAL CHANGES. IDENTIFY TRANSITION / REDUCER STRIPS IN SHOP DRAWINGS.  
 5. WHERE DIFFERING FLOOR MATERIAL MEET, FEATHER SUBFLOOR TO ACCOMMODATE DIFFERENCES IN GAUGES OR SUB-FLOOR LEVEL.  
 6. DO NOT SCALE THE DRAWINGS. THE CONTRACTOR IS RESPONSIBLE FOR TH SITE REVIEW AND VERIFICATION OF ALL QUANTITIES OF MATERIAL REQUIRED TO COMPLETE THE INSTALLATION.  
 7. EXTEND RESILIENT FLOORING TO WALL UNDER COUNTER AND FACE OF CASEWORK TOE SPACE, TYP.  
 8. ALL MATERIAL OF ONE PATTERN / COLOR SHALL BE THE SAME DYE LOT.  
 9. RESILIENT BASE REQUIRES SEQUENCING WITH FLOORING CONTRACTOR TO CHECK WITH MNFR'S RECOMMENDATIONS FOR INSTALLATION.  
 10. ALL CONCRETE WALLS ARE EXPOSED / UNPAINTED UNLESS OTHERWISE NOTED.  
 11. PROVIDE FRP WAINSCOT AT ALL CUSTODIAL CLOETS BEHIND MOP SINKS. 3'-0" LONG EACH SIDE X 4'-0" HIGH.  
 12. PROVIDE 4'-0" HIGH FRP WAINSCOT BEHIND WASHER DRYER AT BUILDING STORAGE ROOM X47 AND EXTEND 3'-0" ON EACH SIDE.  
 13. 1/8" SAW CUT WITH EPOXY FILL AT FC1 AND FC2. COLOR TO BE DETERMINED.

**FINISH LEGEND**

- CPT1B
- CPT2
- CPT3
- CPT4
- CPT5
- RES1
- SC1
- CT1
- FC1

- Name**
- Ceiling Finish
  - Wall Finish
  - Floor Finish

DSA APPROVAL

**RATCLIFF**

5856 Doyle Street  
Emeryville, CA 94608  
Tel 510 899 6400  
www.ratcliffarch.com



ISSUE SCHEDULE	NO.	DATE
Bid Addendum 1	A	06/29/22
Bid Addendum 2	B	07/25/22
Bid Addendum 6	C	08/10/22

**PERALTA COMMUNITY COLLEGE DISTRICT  
BERKELEY CITY COLLEGE**  
2118 MILVIA STREET  
BERKELEY, CA. 94704

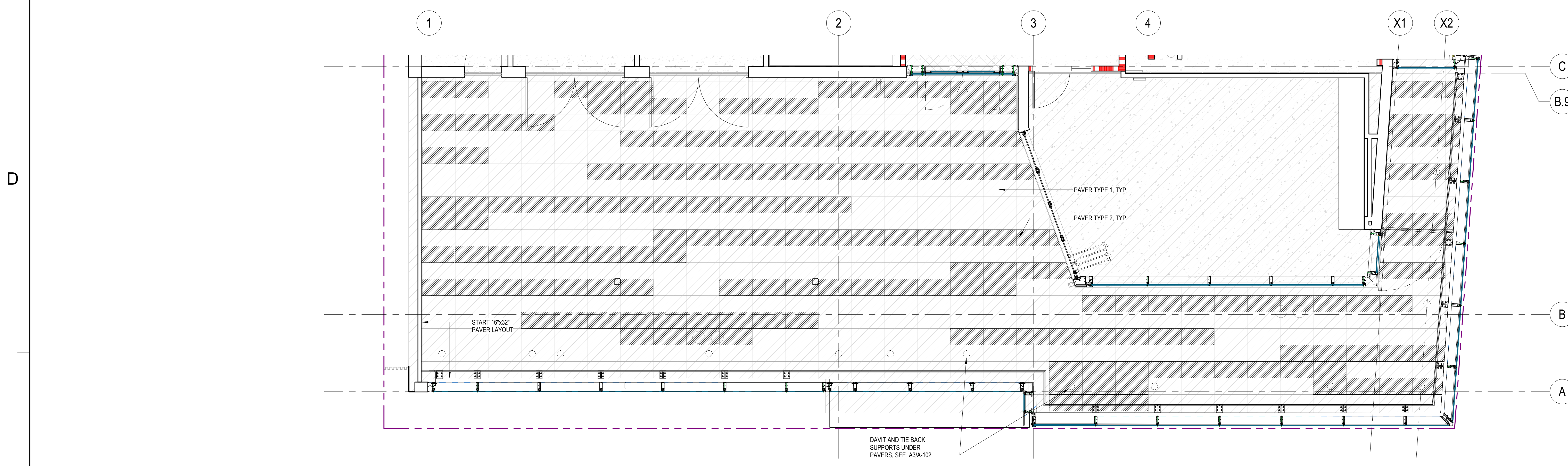
**BCC WEST**

SHEET TITLE:  
**FINISH PLANS - LEVELS 3 & 4**

SCALE: As indicated  
PROJECT NUMBER: 21415

SHEET NUMBER: **A-612**

07/18/2022 DSA SUBMITTAL & BID SET



C2 ENLARGED FINISH PLAN - PEDESTAL PAVER PATTERN  
1/4" = 1'-0"



A1 LEVEL 5 - FLOOR PLAN  
1/8" = 1'-0"



A2 LEVEL 6 - FLOOR PLAN  
1/8" = 1'-0"

- GENERAL FINISH NOTES**
1. FINISH ALL WALL FINISHES AT INSIDE CORNER.
  2. ALL MECHANICAL ACCESSORIES THAT ARE PRIMED ONLY AND ACCESS DOORS ARE TO BE PAINTED TO MATCH SURROUNDING WALL. NOTIFY ARCHITECT FOR FINISHED ITEMS NOT MATCHING SURROUNDING WALL.
  3. ALL EXPOSED GYPSUM BOARD SURFACES TO BE PAINTED PT1 U.O.N.
  4. TYPICAL WALL PAINT FINISH IS PT1 SHERWIN WILLIAMS SW7551 GREEK VILLA.
  5. NON-PUBLIC, INTERIOR EXPOSED OR FURRED CONCRETE WALLS & COLUMNS FINISH WILL BE C1, U.O.N.
  6. ALL EXTERIOR & INTERIOR EXPOSED ARCHITECTURAL CONCRETE ROUND COLUMNS AND PUBLIC INTERIOR EXPOSED ARCHITECTURAL CONCRETE SQUARE COLUMNS WILL BE C3B, U.O.N.
- FLOOR FINISHES**
1. WHERE DIFFERING FLOOR FINISH MATERIALS MEET AT DOORS, THE SEAM SHALL OCCUR DIRECTLY BELOW THE CENTERLINE OF THE CLOSED DOOR U.O.N.
  2. GRAB DIRECTION OF FLOORING MATERIAL TO BE CONSISTENT IN DIRECTION THROUGHOUT ENTIRE PROJECT. DO NOT QUARTER-TURN FLOORING MATERIAL UNLESS THE INSTALLATION METHOD HAS BEEN RECOMMENDED BY THE MANUFACTURER, I.E., CARPET TILE AND/OR WALK-OFF MAT.
  3. SUBMIT FLOOR SEAMING DIAGRAM FOR APPROVAL PRIOR TO PURCHASE OF MATERIAL.
  4. PROVIDE TRANSITION / REDUCER STIP AT ALL FLOOR MATERIAL CHANGES. IDENTIFY TRANSITION / REDUCER STRIPS IN SHOP DRAWINGS.
  5. WHERE DIFFERING FLOOR MATERIAL MEET, FEATHER SUBFLOOR TO ACCOMMODATE DIFFERENCES IN GAUGES OR SUB-FLOOR LEVEL.
  6. DO NOT SCALE THE DRAWINGS. THE CONTRACTOR IS RESPONSIBLE FOR THE SITE REVIEW AND VERIFICATION OF ALL QUANTITIES OF MATERIAL REQUIRED TO COMPLETE THE INSTALLATION.
  7. EXTEND RESILIENT FLOORING TO WALL UNDER COUNTER AND FACE OF CASEWORK TOE SPACE, TYP.
  8. ALL MATERIAL OF ONE PATTERN / COLOR SHALL BE THE SAME DYE LOT.
  9. RESILIENT BASE REQUIRES SEQUENCING WITH FLOORING CONTRACTOR TO CHECK WITH MNR'S RECOMMENDATIONS FOR INSTALLATION.
  10. ALL CONCRETE WALLS ARE EXPOSED / UNPAINTED UNLESS OTHERWISE NOTED.
  11. PROVIDE FRP WAJNSCOT AT ALL CUSTODIAL CLOSETS BEHIND MOP SINKS. 3'-0" LONG EACH SIDE X 4'-0" HIGH.
  12. PROVIDE 4'-0" HIGH FRP WAJNSCOT BEHIND WASHER DRYER AT BUILDING STORAGE ROOM X47 AND EXTEND 3'-0" ON EACH SIDE.
  13. 1/8" SAW CUT WITH EPOXY FILL AT FC1 AND FC2. COLOR TO BE DETERMINED.

**FINISH LEGEND**

- CPT1B
- CPT2
- CPT3
- CPT4
- CPT5
- RES1
- SC1
- CT1
- FC1

DSA APPROVAL

**RATCLIFF**  
5856 Doyle Street  
Emeryville, CA 94608  
Tel 510 899 6400  
www.ratcliffarch.com



ISSUE SCHEDULE	NO.	DATE
Bid Addendum 1	A	06/29/22
Bid Addendum 2	B	07/25/22
Bid Addendum 6	C	08/10/22

**PERALTA COMMUNITY COLLEGE DISTRICT BERKELEY CITY COLLEGE**  
2118 MILVIA STREET  
BERKELEY, CA. 94704

**BCC WEST**

SHEET TITLE:  
**FINISH PLANS - LEVELS 5 & 6**

SCALE: As indicated  
PROJECT NUMBER: 21415

SHEET NUMBER: **A-613**

07/18/2022 DSA SUBMITTAL & BID SET

**PCCD: Berkeley City College - West**

Bid RFI Log - TI Trades

Date: 8/10/2022

Bid RFI #	Date Received from Bidder	Relevant Scopes	Question	Response Date	Response
1	7/27/2022	DFH	Section b item 3- calls for interior storefront hardware to be coordinated for install by others, would we be providing the hardware and the glazer would be installing it into their storefront doors?	8/2/2022	Yes, our glazer will take care of the install of the hardware on any of the interior storefront systems.
2	7/28/2022	DFH	Section b item 5 iv – calls for transom glass install, are we to include that glass install but the glass is provided by others?	8/3/2022	Yes, glass by others.
3	7/29/2022	DFH	Section b item 7 – calls for STC rated openings and to match the glass but generally the frame is the limiting factor and achieving STC 40 (GL7)with an aluminum frame may be difficult.	8/4/2022	Qualify in your proposal what STC rating you can achieve.
4	7/30/2022	DFH	Section b item 14 – calls for acoustic seals at “ALL” doors? Do I assume I am just going to follow the hardware groups?	8/5/2022	Yes, follow the hardware groups.
5	7/31/2022	DFH	Section b item 19 – Calls for one additional hardware set, does that mean one of each hardware set?	8/6/2022	Provide this as an add alternate price, separate from our base proposal.
6	8/1/2022	DFH	Section C item i- says to exclude door vision lights, generally we always include these, especially with wood doors because we have the factory install them usually. Please clarify.	8/7/2022	Yes, include the vision lights, factory install.
7	8/2/2022	DFH	Section C item ii – says to exclude all aluminum door and window frames, I was assuming I would just be excluding the exterior curtainwall, but am I supposed to exclude anything aluminum and only cover wood and hollow metal? Item 1 of section b says to include all door, vision lite, and sidelight frames.	8/8/2022	Yes, only cover wood and hollow metal.
8	7/28/2022	Signage	E.ID02F MARQUE Oracal 8300 minimum life expectancy is 5 years while Oracal 8800 minimum life expectancy is 8 years. Data sheets attached. Shall we bid 8800?	8/1/2022	This product is translucent, not transparent. Oracal 8300 is to be used.
9	7/28/2022	Signage	I.ID20F and others install on glazing. Shall we provide backers to hide the back of sign and tape? Vinyl or a 1/8" painted acrylic backer?	8/1/2022	V1 white vinyl at size of sign to be applied first surface to glass and sign to be fixed to that vinyl.
10	7/28/2022	Signage	E.ID60F LOADING DOCK ID Please provide drawings.	8/1/2022	This sign is omitted.
11	7/28/2022	Signage	I.RG11F ISA DIRECTIONAL Please provide drawings.	8/1/2022	This sign is omitted.
12	7/28/2022	Signage	Exhibit C 3.b.ii Does this mean that sign company will install sign support structure inside the soffit? "...align with exterior cement plaster work...?"	8/1/2022	Attachment to structural deck will be by signage contractor. Signage contractor to coordinate with framing contractor as necessary for trim and sequencing of signage installation.
13	7/28/2022	Signage	Exhibit C 3.b.iii "...window film will be required to be full lite..." The vinyl is 48" wide and the lite is 59.5" wide, so there will be a small lap seam in the vinyl. Will this maintain the warranty?	8/1/2022	Lap seam is acceptable by glazing manufacturer.
14	8/2/2022	ACT	Can you please confirm that DET B2/A572 should be used at perimeter of rooms with exposed concrete? Rooms 103B, 201, 202, and 402A appear to have the incorrect callout to DET B3/A572 and rooms 203B, 203D, 302, 303C, 303D, 401.1, 401A-C, 402, 403, 405, 501, 502, 503.2, 503A-G, 603A-D, and 603H do not have individual call outs showing perimeter.	8/3/2022	Yes, all locations noted.
15	8/3/2022	ACT	Can you please confirm that the use of DET B4/A572 is to be used at all perimeter conditions with a window shade pocket? Rooms 104, 304, 404, 504B, and 604 have the detail callout. But rooms 203C, 204, 305, 405, 503H, 503K, 504A, 504C, and 603E-G appear to have shade pockets but have no individual detail callouts.	8/4/2022	Yes, all locations noted.
16	8/2/2022	ACT	Can you please confirm the use of 2" axiom in the corridors at exposed to deck per DET A3/A572 at corridor 3A, 4A, 5A, and 6A? L1 Corridor and Corridor 2A have such detail callouts but don't appear to be referenced at the other corridors.	8/3/2022	Yes, all locations noted.

**PCCD: Berkeley City College - West**

Bid RFI Log - TI Trades

Date: 8/10/2022

Bid RFI #	Date Received from Bidder	Relevant Scopes	Question	Reponse Date	Response
17	8/2/2022	Signage	Are there drawings for sign type 1.RG11F and sign type E.ID06F.?	8/3/2022	This sign has been removed from the scope of work.
18	8/2/2022	Signage	For sign type I.IN02F I'm confused on what is needed. On the attached PDF page 2 and 3 Both Show I.IN02F but they are different. The 3rd page shows some dimensional letters and other sign type. Can you please clarify?	8/4/2022	Please refer to the drawing in Bid Pack 02 (TI Trades). The drawing you referenced was from an earlier drawing which has been corrected.
19	8/2/2022	DFH	For the aluminum frames I wanted to clarify scope coverage of the trim style aluminum vs the true storefront scope. I am assuming all of the openings where the spec section 084413 is called out on the door schedule would be where the true storefront would be. Generally the trim style framing would fall under the DFH scope and the true storefront to the glazer.	8/2/2022	This scope will be by our interior glazing contractor. Bidder may provide a bid alternate to supply.
20	8/3/2022	Casework/Millwork	Please provide finish for floating countertop shown at E1/A-450. Please provide finish for upper cabinets shown at D3/A-450. Please provide finish for cabinets shown at D4/A-460. Please clarify if counter and ada panel show at A4/A-462 is by millworker, if so please provide finishes.	8/5/2022	1. E1/A-450: Recommend a stainless steel countertop (not currently scheduled nor specified). 2. D3/A-450: Change uppers to storage wall-mount cabinets per specification Section 10 56 13, new Type UC-1 Welded Standard Wall-Mount Cabinets, powdercoat finish, 36" long by 14" deep by 27" high. Model #H-4472, each unit by ULine. Stack two units each location in plan and elevations for a total nominal height of 54" high. Note, three (3) lines of wall backing are needed each stacked pair vertical units [currently two (2) lines of backing called out]. 3. D4/A-460: These units are storage cabinets per specification Section 10 56 13, Type C-1. 4. A4/A-462: Countertop = "SSF1"; ADA panel (casework) = "PL1". Scope is by millworker.
21	8/5/2022	Metals	Reference Details A2 & A3 on Sheet A-543 Do the Corrugated Alum. Panels Field Paint?	8/8/2022	Shop primed, field painted.
22	8/3/2022	Casework/Millwork	Please provide finish specification for solid white birch at corridor benches, is it a stain finish or clear finish? Please provide picture of control sample if available.	8/8/2022	Clear finish - no control sample available. Interior Clear Wood Finish system is listed in specification Section 09 90 00 - Painting and Coating. Final approval of finish will be performed through the finish sample submittal review process.
23	8/3/2022	Shelving	Page 2 of the attached spec calls for 5 years of experience to install the storage shelving. Please advise if one can submit without this requirement.	8/8/2022	Yes, 5-year minimum Installer Qualifications is not required for this Section's scope of work and will be deleted from specification.

**PCCD: Berkeley City College - West**

Bid RFI Log - TI Trades

Date: 8/10/2022

Bid RFI #	Date Received from Bidder	Relevant Scopes	Question	Reponse Date	Response
24	8/8/2022	Painting/ Wallcoverings	Tack Strip Wallcoverings - Hello, the walcovering estimator is asking for widths for these (attached). Or are we to scale them and qualify.	8/10/2022	<p>See dimensions below (listed top-to-bottom):            Level 3, Corr 3A-E - all are 16'-0" in length:            3"W            2"W            4"W            2"W            3"W            2"W            4"W</p> <p>Level 5, Corr 5A-E - all are 16'-0" in length:            {same as Level 3, Corr 3A-E}</p> <p>See dimensions below (listed top-to-bottom, left-to-right):            Level 4, Corr 4A-E:            3"W x 16'-0"L            2"W x 10'-0" L    2"W x 16'L            4"W x 16'-0"L            2"W x 16'-0"L    2"W x 12'L            3"W x 16'-0"L            2"W x 16'-0"L    2"W x 10'-0"L            4"W x 9'-6"L    4"W x 16'-0"L</p>
25	8/3/2022	Shelving	<ol style="list-style-type: none"> <li>Hardware groups for opening X11B-1, X14-1, X18-2, X64-1, X70-1, and 403-3 seem incorrect. Please clarify.</li> <li>Openings X65-1, X66-1, and X68-1 have hardware group 35 which just says hardware by door manufacturer. What should I be providing here?</li> <li>Opening 402-1 calls for hardware group 45 but the last group in the specs is 44. Please clarify.</li> <li>Opening 102-1 calls for a frameless pair of doors but then shows a transom above in hollow metal. Will this just be a window frame with an applied stop on the bottom side and both jamb legs will be some type of bind jamb by others?</li> </ol>	8/10/2022	See attached updated specification for clarifications to these conflicts.