

PCCD Berkeley City College Milvia St New Bldg - 1



Activity ID	Activity Name	Original Duration	Start	Finish	Total Float	2023												2024												2025					
						2023												2024												2025					
						Jul	Aug	Sep	Oct	Nov	Dec	Jan	Feb	Mar	Apr	May	Jun	Jul	Aug	Sep	Oct	Nov	Dec	Jan	Feb	Mar	Apr	May	Jun	Jul	Aug	Sep	Oct	Nov	Dec
<b>PCCD Berkeley City College Milvia St New Bldg - 1</b>						PCCD Be																													
<b>MILESTONES</b>						MILESTO																													
<b>CONTRACT MILESTONES</b>						CONTRA																													
MM-20000	NTP for Pre-Construction Phase	0	12-May-21 A																																
MM-10000	NTP for Design	0	01-Jun-21 A																																
MM-30000	100% CD Permit Approved	0		05-Jul-22	585	100% CD Permit Approved																													
MM-90000	GMP Board Approval	0		11-Oct-22	0	◆ GMP Board Approval																													
MM-40000	Award XL NTP for Construction	0		28-Oct-22	502	◆ Award XL NTP for Construction																													
MM-100000	Hazmat	0		28-Dec-22	462	◆ Hazmat																													
MM-70000	Demolition - Phase 1	0	18-Jan-23		480	◆ Demolition - Phase 1																													
MM-80000	Construction	0	22-Mar-23		436	◆ Construction																													
MM-50000	Substantial Completion	0		28-Jun-24	35	◆ Substantial Completion																													
MM-60000	Project Complete	0		06-Dec-24	0	◆ Project C																													
<b>OWNER MILESTONES</b>						OWNER MILESTONES																													
OM-10000	Owner procured material and equipment	0	01-Jul-24	01-Jul-24	82	Owner procured material and equipm																													
OM-20000	Owner Fit-out	40	01-Jul-24	26-Aug-24	42	Owner Fit-out																													
<b>Construction Milestones</b>						Construction Milestones																													
MCO-1000	First day of Framing - Level 1	0	06-Jul-23		148	◆ First day of Framing - Level 1																													
MCO-1100	First day of Framing - Level 2	0	13-Jul-23		143	◆ First day of Framing - Level 2																													
MCO-1200	First day of Framing - Level 3	0	21-Jul-23		137	◆ First day of Framing - Level 3																													
MCO-1500	First day of Framing - Level 4	0	03-Aug-23		128	◆ First day of Framing - Level 4																													
MCO-1600	First day of Framing - Level 5	0	07-Aug-23		126	◆ First day of Framing - Level 5																													
MCO-1700	First day of Framing - Level 6	0	09-Aug-23		124	◆ First day of Framing - Level 6																													
MCO-1400	First day of Drywall - Level 1	0	24-Jan-24		193	◆ First day of Drywall - Level 1																													
MCO-2100	First day of Drywall - Level 2	0	31-Jan-24		188	◆ First day of Drywall - Level 2																													
MCO-2200	First day of Drywall - Level 3	0	07-Feb-24		183	◆ First day of Drywall - Level 3																													
MCO-2300	First day of Drywall - Level 4	0	07-Feb-24		183	◆ First day of Drywall - Level 4																													
MCO-2400	First day of Drywall - Level 5	0	15-Feb-24		178	◆ First day of Drywall - Level 5																													
MCO-2500	First day of Drywall - Level 6	0	22-Feb-24		173	◆ First day of Drywall - Level 6																													
MCO-1300	Elevator Complete	0		28-Feb-24	168	◆ Elevator Complete																													
MCO-1800	Power to Site	0	01-May-24		124	◆ Power to Site																													
MCO-1900	Energize Equipment	0	01-May-24		124	◆ Energize Equipment																													
MCO-2000	Water to Site	0		01-May-24	123	◆ Water to Site																													
<b>XL Milestones</b>						XL Milestones																													
<b>Sustainability Milestones</b>						Sustainability Milestones																													
XLM-1110	S&C LEED Paperwork Complete (Tie to Superstructure Complete Mile	0	07-Aug-23	30-Apr-24	124	◆ S&C LEED Paperwork Complete (Tie to Superstructure Complete Milestone)																													
XLM-1120	TI LEED Paperwork Complete (Interiors Complete Milestone)	10	15-Mar-24	28-Mar-24	147	◆ TI LEED Paperwork Complete (Interiors Complete Milestone)																													
XLM-1130	Material Complete (Prior to CX Starting)	0		30-Apr-24	124	◆ Material Complete (Prior to CX Starting)																													
<b>Start Milestones</b>						Start Milestones																													
XLM-1000	Mobilization	0	09-Dec-22		55	◆ Mobilization																													
XLM-1010	Start - Demo	0	03-Jan-23		62	◆ Start - Demo																													
XLM-1020	Start - Substructure/Foundation	0	22-Mar-23		334	◆ Start - Substructure/Foundation																													
XLM-1030	Start - Superstructure	0	05-May-23		119	◆ Start - Superstructure																													
XLM-1040	Start - Construction - TI	0	08-Aug-23		309	◆ Start - Construction - TI																													
XLM-1050	Start - Exterior Facade	0	15-Sep-23		192	◆ Start - Exterior Facade																													
XLM-1060	Start - Pre-functional Testing	0	01-May-24		124	◆ Start - Pre-functional Testing																													
<b>Completion Milestones</b>						Completion Milestones																													

█ Remaining Level of Effort   
 █ Actual Work   
 █ Critical Remaining Work  
█ Actual Level of Effort   
 █ Remaining Work   
 ◆ ◆ Milestone

Activity ID	Activity Name	Original Duration	Start	Finish	Total Float	2023																									2024												2025
						2023												2024													2025												
						Jul	Aug	Sep	Oct	Nov	Dec	Jan	Feb	Mar	Apr	May	Jun	Jul	Aug	Sep	Oct	Nov	Dec	Jan	Feb	Mar	Apr	May	Jun	Jul	Aug	Sep	Oct	Nov	Dec	Jan							
XLM-9000	Superstructure Complete	0	07-Aug-23	309	◆ Superstructure Complete																																						
XLM-9010	Overhead Complete (Rough-In) - level 1	0	27-Sep-23	101													◆ Overhead Complete (Rough-In) - level 1																										
XLM-9020	Overhead Complete (Rough-In) - level 2	0	11-Oct-23	90													◆ Overhead Complete (Rough-In) - level 2																										
XLM-9030	Overhead Complete (Rough-In) - level 3	0	24-Oct-23	91													◆ Overhead Complete (Rough-In) - level 3																										
XLM-9040	Overhead Complete (Rough-In) - level 4	0	03-Nov-23	88													◆ Overhead Complete (Rough-In) - level 4																										
XLM-9050	Overhead Complete (Rough-In) - level 5	0	14-Nov-23	86													◆ Overhead Complete (Rough-In) - level 5																										
XLM-9060	Overhead Complete (Rough-In) - level 6	0	22-Nov-23	85													◆ Overhead Complete (Rough-In) - level 6																										
XLM-9070	Watertight - Roof Complete	0	26-Dec-23	211													◆ Watertight - Roof Complete																										
XLM-9080	Watertight - Facade Complete	0	24-Jan-24	192													◆ Watertight - Facade Complete																										
XLM-9090	Main Electrical Room/IDF - Room Ready	0	14-Mar-24	157													◆ Main Electrical Room/IDF - Room Ready																										
XLM-9100	TCO (Separate Bldg or Scope)	0	04-Sep-24	35													◆ TCO (Separate Bldg or Scope)																										
<b>PRECONSTRUCTION</b>		1009	01-Dec-20 A	06-Dec-24	0	PRECON																																					
<b>RFP/AWARD</b>		81	01-Dec-20 A	29-Mar-21 A																																							
PCN-R100	Distribution of RFP	1	01-Dec-20 A	01-Dec-20 A																																							
PCN-R110	Mandatory Informational Meeting	1	07-Dec-20 A	07-Dec-20 A																																							
PCN-R120	Collaboration Interview #1	1	15-Dec-20 A	15-Dec-20 A																																							
PCN-R130	Collaboration Interview #2	1	14-Jan-21 A	14-Jan-21 A																																							
PCN-R140	Proposal Response Deadline	7	21-Jan-21 A	29-Jan-21 A																																							
PCN-R150	Final Interview	1	05-Feb-21 A	05-Feb-21 A																																							
PCN-R160	Notification of Selected DBE	1	01-Mar-21 A	01-Mar-21 A																																							
PCN-R170	DBE Contract Negotiation	20	02-Mar-21 A	29-Mar-21 A																																							
PCN-R180	DBE Contract Complete	1	29-Mar-21 A	29-Mar-21 A																																							
<b>CEQA</b>		165	02-Mar-21 A	08-Nov-21 A																																							
PCN-Q100	Initial Study	70	02-Mar-21 A	08-Jun-21 A																																							
PCN-Q110	Consultation with Responsible Agency	25	09-Jun-21 A	14-Jul-21 A																																							
PCN-Q120	Notification of Preparation of EIR	1	15-Jul-21 A	15-Jul-21 A																																							
PCN-Q130	Consultation with Responsible Agency	25	15-Jul-21 A	18-Aug-21 A																																							
PCN-Q140	Preparation of Draft EIR	25	15-Jul-21 A	18-Aug-21 A																																							
PCN-Q150	Notification of EIR Completion	0	19-Aug-21 A	19-Aug-21 A																																							
PCN-Q160	Public Review Period	45	19-Aug-21 A	08-Nov-21 A																																							
<b>DESIGN</b>		291	12-May-21 A	15-Jul-22	127	DESIGN																																					
<b>COLLABORATION PHASE</b>		83	12-May-21 A	07-Sep-21 A																																							
PCN-C100	Collaboration Phase Kick-Off Meeting	0	12-May-21 A	12-May-21 A																																							
PCN-C110	Programming & Project Criteria Refinement	50	20-May-21 A	30-Jul-21 A																																							
PCN-C120	BUGs Meetings	2	22-Jun-21 A	23-Jun-21 A																																							
PCN-C130	DBE & District Alignment Session	1	23-Jun-21 A	23-Jun-21 A																																							
PCN-C160	City of Berkeley Planning Meeting	0	22-Jul-21 A	22-Jul-21 A																																							
PCN-C190	Collaboration Phase Submission	0	09-Aug-21 A	09-Aug-21 A																																							
<b>DESIGN PRECON ACTIVITIES CP</b>		32	15-Jul-21 A	27-Aug-21 A																																							
PCN-C140	Construction Estimate	15	15-Jul-21 A	04-Aug-21 A																																							
PCN-C150	Deductive Alternatives & Value Engineering	15	15-Jul-21 A	04-Aug-21 A																																							
PCN-C170	Master Schedule Update	5	29-Jul-21 A	30-Jul-21 A																																							
PCN-C210	LCCA Review and Selection Approval	1	27-Aug-21 A	27-Aug-21 A																																							
<b>DISTRICT APPROVALS</b>		22	09-Aug-21 A	07-Sep-21 A																																							
PCN-C180	Planned District Approval Period	5	09-Aug-21 A	13-Aug-21 A																																							
PCN-C200	Extended Review and Estimate Reconciliation	10	16-Aug-21 A	27-Aug-21 A																																							
PCN-C220	Preliminary District Approval	0	30-Aug-21 A	30-Aug-21 A																																							

Remaining Level of Effort	Actual Work	Critical Remaining Work
Actual Level of Effort	Remaining Work	Milestone



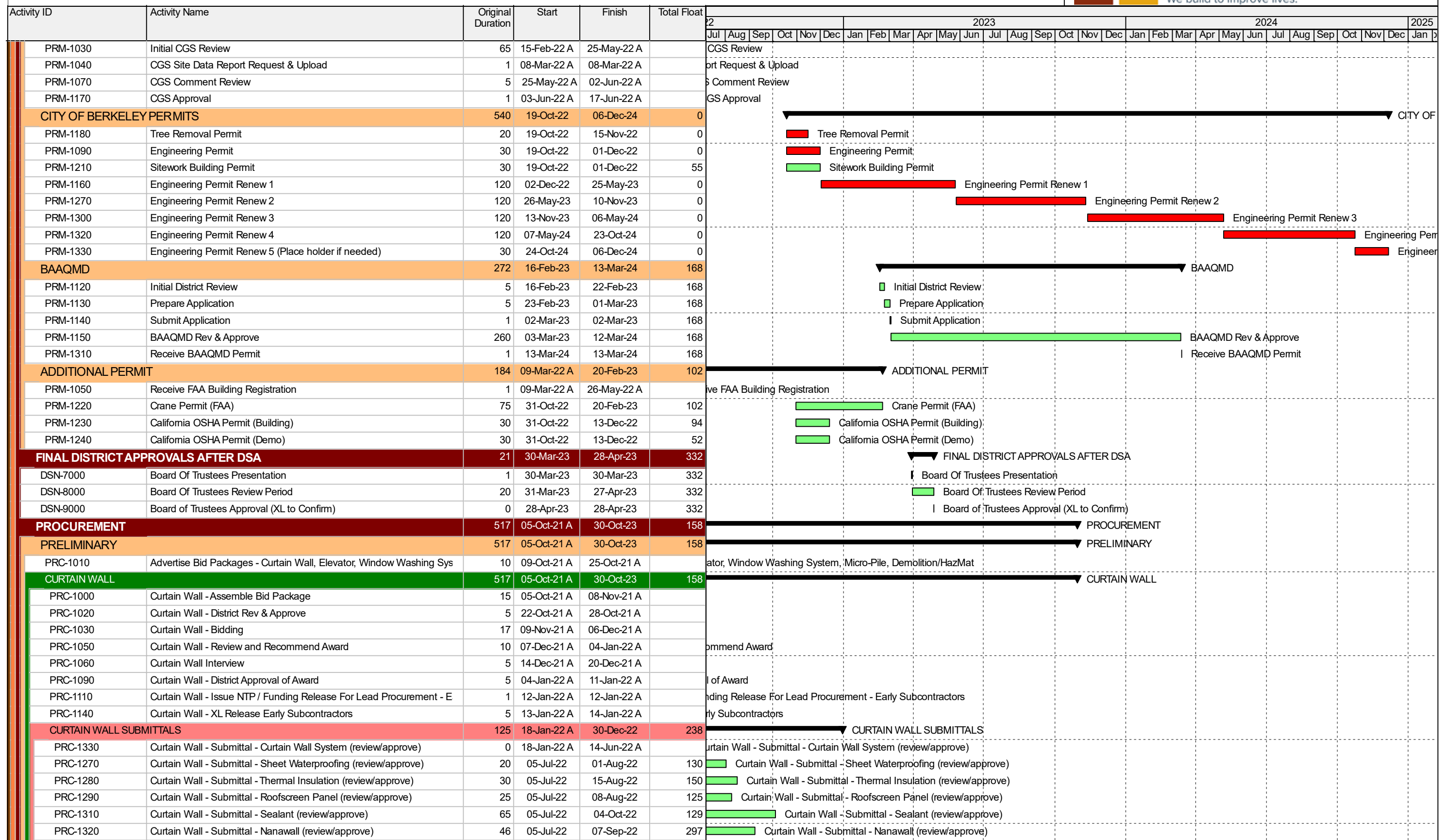








PCCD Berkeley City College Milvia St New Bldg - 1



█ Remaining Level of Effort   
 █ Actual Work   
 █ Critical Remaining Work  
█ Actual Level of Effort   
 █ Remaining Work   
 ◆ ◆ Milestone



PCCD Berkeley City College Milvia St New Bldg - 1



Activity ID	Activity Name	Original Duration	Start	Finish	Total Float	2023																									2024					2025
						2023												2024													2025					
						Jul	Aug	Sep	Oct	Nov	Dec	Jan	Feb	Mar	Apr	May	Jun	Jul	Aug	Sep	Oct	Nov	Dec	Jan	Feb	Mar	Apr	May	Jun	Jul	Aug	Sep	Oct	Nov	Dec	Jan
PRC-1340	Curtain Wall - Submittal - Glazing (review/approve)	64	05-Jul-22	03-Oct-22	130	Curtain Wall - Submittal - Glazing (review/approve)																														
PRC-1460	Curtain Wall - Submittal - Louver (review/approve)	20	07-Sep-22	04-Oct-22	199	Curtain Wall - Submittal - Louver (review/approve)																														
PRC-1470	Curtain Wall - Submittal - Automatic operators/bollards (review/approve)	80	07-Sep-22	30-Dec-22	238	Curtain Wall - Submittal - Automatic operators/bollards (review/approve)																														
PRC-1480	Curtain Wall - Submittal - Aluminum storefront/door hardware submittals	80	07-Sep-22	30-Dec-22	115	Curtain Wall - Submittal - Aluminum storefront/door hardware submittals (review/approve)																														
PRC-1300	Curtain Wall - Submittal - Aluminum panels/parapet cap (review/approve)	36	09-Sep-22	28-Oct-22	67	Curtain Wall - Submittal - Aluminum panels/parapet cap (review/approve)																														
<b>CURTAIN WALL MATERIAL PROCUREMENT</b>		<b>325</b>	<b>20-Jul-22</b>	<b>30-Oct-23</b>	<b>158</b>	<b>CURTAIN WALL MATERIAL PROCUREMENT</b>																														
PRC-1450	Curtain Wall - Release/Procure new facade dies	30	20-Jul-22	30-Aug-22	65	Curtain Wall - Release/Procure new facade dies																														
PRC-1490	Curtain Wall - Release for Curtain Wall extrusion procurement	1	31-Aug-22	31-Aug-22	65	Curtain Wall - Release for Curtain Wall extrusion procurement																														
PRC-1510	Curtain Wall - Procure/Extrude CW and PW framing materials	70	07-Sep-22	15-Dec-22	65	Curtain Wall - Procure/Extrude CW and PW framing materials																														
PRC-1500	Curtain Wall - Fabrication Drawings	75	31-Oct-22	20-Feb-23	67	Curtain Wall - Fabrication Drawings																														
PRC-1520	Curtain Wall - Release/Procure Insulation	125	29-Nov-22	29-May-23	78	Curtain Wall - Release/Procure Insulation																														
PRC-1840	Curtain Wall - Paint/Fabricate CW/PW framing & ocean freight	125	16-Dec-22	15-Jun-23	65	Curtain Wall - Paint/Fabricate CW/PW framing & ocean freight																														
PRC-1670	Curtain Wall - Order Glass	1	05-Jan-23	05-Jan-23	67	Curtain Wall - Order Glass																														
PRC-1680	Curtain Wall - Fabricate and ship glass	110	06-Jan-23	13-Jun-23	67	Curtain Wall - Fabricate and ship glass																														
PRC-2030	Curtain Wall - Release / Fabricate Nanawall	150	30-Mar-23	27-Oct-23	158	Curtain Wall - Release / Fabricate Nanawall																														
PRC-2040	Curtain Wall - Release Aluminum Storefront Doors	100	30-Mar-23	18-Aug-23	55	Curtain Wall - Release Aluminum Storefront Doors																														
PRC-2050	Curtain Wall - Release Auto Operators	55	13-Apr-23	29-Jun-23	168	Curtain Wall - Release Auto Operators																														
PRC-2060	Curtain Wall - Release /Fabricate Louvers	60	03-May-23	27-Jul-23	55	Curtain Wall - Release /Fabricate Louvers																														
PRC-2110	Curtain Wall - Assemble and glaze panels	50	16-Jun-23	25-Aug-23	65	Curtain Wall - Assemble and glaze panels																														
PRC-2090	Curtain Wall - Receive Auto Operators	5	30-Jun-23	07-Jul-23	168	Curtain Wall - Receive Auto Operators																														
PRC-2100	Curtain Wall - Deliver Louvers	5	28-Jul-23	03-Aug-23	55	Curtain Wall - Deliver Louvers																														
PRC-2120	Curtain Wall - Deliver Storefront Doors	5	21-Aug-23	25-Aug-23	133	Curtain Wall - Deliver Storefront Doors																														
PRC-2130	Curtain Wall - Deliver Nanawall	1	30-Oct-23	30-Oct-23	158	Curtain Wall - Deliver Nanawall																														
<b>WINDOW WASHING</b>		<b>118</b>	<b>07-Jan-22 A</b>	<b>18-May-22 A</b>		<b>WINDOW WASHING</b>																														
PRC-1100	Window Washing - Assemble Bid Package	15	07-Jan-22 A	22-Feb-22 A		Window Washing - Assemble Bid Package																														
PRC-1190	Window Washing - District Rev & Approve	3	23-Feb-22 A	28-Feb-22 A		Window Washing - District Rev & Approve																														
PRC-1200	Window Washing - Bidding	17	28-Feb-22 A	06-Apr-22 A		Window Washing - Bidding																														
PRC-1220	Window Washing - Review and Recommend Award	10	06-Apr-22 A	12-Apr-22 A		Window Washing - Review and Recommend Award																														
PRC-1230	Window Washing - District Approval of Award	5	06-Apr-22 A	12-Apr-22 A		Window Washing - District Approval of Award																														
PRC-1240	Window Washing - XL Release Early Subcontractors	5	12-Apr-22 A	18-May-22 A		Window Washing - XL Release Early Subcontractors																														
PRC-1250	Window Washing - Issue NTP / Funding Release For Lead Procurement - Early Subcontractors	1	12-Apr-22 A	12-Apr-22 A		Window Washing - Issue NTP / Funding Release For Lead Procurement - Early Subcontractors																														
<b>ELEVATOR</b>		<b>153</b>	<b>12-Jan-22 A</b>	<b>18-Aug-22</b>	<b>212</b>	<b>ELEVATOR</b>																														
PRC-1120	Elevator - Assemble Bid Package	15	12-Jan-22 A	15-Jul-22	212	Elevator - Assemble Bid Package, Elevator - Assemble Bid Package																														
PRC-1260	Elevator - District Rev & Approve	5	14-Jul-22	20-Jul-22	212	Elevator - District Rev & Approve																														
PRC-1350	Elevator - Bidding	0	21-Jul-22	21-Jul-22	212	Elevator - Bidding																														
PRC-1360	Elevator - Review and Recommend Award	10	21-Jul-22	03-Aug-22	212	Elevator - Review and Recommend Award																														
PRC-1380	Elevator - District Approval of Award	5	04-Aug-22	10-Aug-22	212	Elevator - District Approval of Award																														
PRC-1390	Elevator - Issue NTP / Funding Release For Lead Procurement - Early Subcontractors	1	11-Aug-22	11-Aug-22	212	Elevator - Issue NTP / Funding Release For Lead Procurement - Early Subcontractors																														
PRC-1400	Elevator - XL Release Early Subcontractors	5	12-Aug-22	18-Aug-22	212	Elevator - XL Release Early Subcontractors																														
<b>MEP</b>		<b>302</b>	<b>20-Jul-22</b>	<b>27-Sep-23</b>	<b>82</b>	<b>MEP</b>																														
<b>MECHANICAL</b>		<b>252</b>	<b>20-Jul-22</b>	<b>19-Jul-23</b>	<b>132</b>	<b>MECHANICAL</b>																														
<b>MECHANICAL SUBMITTALS</b>		<b>92</b>	<b>20-Jul-22</b>	<b>29-Nov-22</b>	<b>240</b>	<b>MECHANICAL SUBMITTALS</b>																														
PRC-1550	AHU Submittal	20	20-Jul-22	16-Aug-22	204	AHU Submittal																														
PRC-1560	ASHPs Submittal	20	20-Jul-22	16-Aug-22	219	ASHPs Submittal																														
PRC-1570	SS/VRFs Submittal	20	31-Oct-22	29-Nov-22	230	SS/VRFs Submittal																														
PRC-1580	Fans Submittal	20	31-Oct-22	29-Nov-22	210	Fans Submittal																														
PRC-1590	Pumps Submittal	20	31-Oct-22	29-Nov-22	132	Pumps Submittal																														
PRC-1600	Suction Diffusers Submittal	20	31-Oct-22	29-Nov-22	170	Suction Diffusers Submittal																														

█ Remaining Level of Effort   
 █ Actual Work   
 █ Critical Remaining Work  
█ Actual Level of Effort   
 █ Remaining Work   
 ◆ ◆ Milestone



PCCD Berkeley City College Milvia St New Bldg - 1



Activity ID	Activity Name	Original Duration	Start	Finish	Total Float	2023												2024												2025												
						Jul	Aug	Sep	Oct	Nov	Dec	Jan	Feb	Mar	Apr	May	Jun	Jul	Aug	Sep	Oct	Nov	Dec	Jan	Feb	Mar	Apr	May	Jun	Jul	Aug	Sep	Oct	Nov	Dec	Jan						
						Gantt Chart Area																																				
PRC-2070	Cable Tray Procurement	45	25-Apr-23	27-Jun-23	140	Cable Tray Procurement																																				
PRC-2080	Electrical Hangers and Supports Procurement	35	16-May-23	05-Jul-23	135	Electrical Hangers and Supports Procurement																																				
<b>FURNITURE</b>						92	24-Nov-21 A	15-Mar-22 A	136	<b>FURNITURE</b>																																
PRC-1040	Furniture - Assemble Bid Package	15	24-Nov-21 A	15-Dec-21 A		Furniture - Assemble Bid Package																																				
PRC-1070	Furniture - District Rev & Approve	5	15-Dec-21 A	21-Dec-21 A		Furniture - District Rev & Approve																																				
PRC-1080	Furniture - Bidding	17	22-Dec-21 A	18-Feb-22 A		Furniture - Bidding																																				
PRC-1130	Furniture Interview	5	13-Jan-22 A	14-Mar-22 A		Furniture Interview																																				
PRC-1150	Furniture - Review and Recommend Award	10	12-Feb-22 A	15-Mar-22 A		Furniture - Review and Recommend Award																																				
PRC-1160	Furniture - District Approval of Award	5	14-Feb-22 A	14-Mar-22 A		Furniture - District Approval of Award																																				
PRC-1170	Furniture - XL Release Early Subcontractors	5	15-Feb-22 A	15-Mar-22 A		Furniture - XL Release Early Subcontractors																																				
PRC-1180	Furniture - Issue NTP / Funding Release For Lead Procurement - Early	1	15-Feb-22 A	15-Feb-22 A		Furniture - Issue NTP / Funding Release For Lead Procurement - Early																																				
<b>DEMO/ HAZMAT</b>						109	04-Mar-22 A	05-Aug-22	136	<b>DEMO/ HAZMAT</b>																																
PRC-1210	Demo Hazmat - Assemble Bid Package	65	04-Mar-22 A	03-Jun-22 A		Demo Hazmat - Assemble Bid Package																																				
PRC-1370	Demo Hazmat - Bidding	20	03-Jun-22 A	07-Jul-22		Demo Hazmat - Bidding																																				
PRC-1410	Demo Hazmat - Review and Recommend Award	10	08-Jul-22	21-Jul-22		Demo Hazmat - Review and Recommend Award																																				
PRC-1420	Demo Hazmat - District Approval of Award	5	22-Jul-22	28-Jul-22		Demo Hazmat - District Approval of Award																																				
PRC-1430	Demo Hazmat - Issue NTP / Funding Release For Lead Procurement - Early	1	29-Jul-22	29-Jul-22		Demo Hazmat - Issue NTP / Funding Release For Lead Procurement - Early																																				
PRC-1440	Demo Hazmat - XL Release Early Subcontractors	5	01-Aug-22	05-Aug-22		Demo Hazmat - XL Release Early Subcontractors																																				
<b>BIDDING &amp; GMP</b>						109	24-May-22 A	28-Oct-22	52	<b>BIDDING &amp; GMP</b>																																
PCN-B110	Prepare Bid Documents	14	26-May-22 A	20-Jul-22	0	Prepare Bid Documents																																				
PCN-B120	Bidding	27	03-Jun-22 A	10-Aug-22	0	Bidding																																				
PCN-B280	Bid Addendum 1	10	20-Jun-22 A	29-Jun-22 A	0	Bid Addendum 1																																				
PCN-B160	Subcontractor Bid Backcheck	10	05-Aug-22	18-Aug-22	0	Subcontractor Bid Backcheck																																				
PCN-B170	Finalizing GMP Budget	21	08-Aug-22	06-Sep-22	0	Finalizing GMP Budget																																				
PCN-B200	GMP Submission to District	0		06-Sep-22	0	GMP Submission to District																																				
PCN-B210	GMP District Review	0	07-Sep-22		0	GMP District Review																																				
PCN-B230	GMP Alt Board Approval (Sept 7 Submit, Oct 11 Mtg)	25	07-Sep-22	11-Oct-22	0	GMP Alt Board Approval (Sept 7 Submit, Oct 11 Mtg)																																				
PCN-B240	GMP District Approval	0		11-Oct-22	0	GMP District Approval																																				
PCN-B250	Execution of Construction Agreement	5	12-Oct-22	18-Oct-22	0	Execution of Construction Agreement																																				
PCN-B260	Construction Agreement Executed	1	19-Oct-22	19-Oct-22	52	Construction Agreement Executed																																				
PCN-B270	Award XL NTP Construction Phase	7	20-Oct-22	28-Oct-22	52	Award XL NTP Construction Phase																																				
<b>IGMP</b>						37	24-May-22 A	19-Jul-22	65	<b>IGMP</b>																																
PCN-B100	Assemble IGMP Package	12	24-May-22 A	08-Jun-22 A		Assemble IGMP Package																																				
PCN-B140	IGMP Submission	1	08-Jun-22 A	08-Jun-22 A		IGMP Submission																																				
PCN-B130	District Pre-Review IGMP Package	6	08-Jun-22 A	10-Jun-22 A		District Pre-Review IGMP Package																																				
PCN-B150	IGMP District Review	23	10-Jun-22 A	12-Jul-22	65	IGMP District Review																																				
PCN-B180	IGMP Approval	0		12-Jul-22	65	IGMP Approval																																				
PCN-B190	IGMP XL Material Release	5	13-Jul-22	19-Jul-22	65	IGMP XL Material Release																																				
<b>SUBMITTAL / PROCUREMENT</b>						300	05-Jul-22	08-Sep-23	228	<b>SUBMITTAL / PROCUREMENT</b>																																
<b>CRITICAL SUBMITTALS</b>						300	05-Jul-22	08-Sep-23	228	<b>CRITICAL SUBMITTALS</b>																																
<b>EXTERIOR SKIN</b>						230	12-Oct-22	08-Sep-23	65	<b>EXTERIOR SKIN</b>																																
SUB-1010	Generate Shop Drawings - Exterior Skin	15	12-Oct-22	01-Nov-22	253	Generate Shop Drawings - Exterior Skin																																				
SUB-1080	Review Drawings - Exterior Skin	15	02-Nov-22	22-Nov-22	253	Review Drawings - Exterior Skin																																				
SUB-1150	Approve Shop Drawings - Exterior Skin	1	23-Nov-22	23-Nov-22	253	Approve Shop Drawings - Exterior Skin																																				
SUB-1230	Release Fabrication - Exterior Skin	1	30-Mar-23	30-Mar-23	169	Release Fabrication - Exterior Skin																																				
SUB-1340	Deliver Material - Exterior Skin	10	28-Aug-23	08-Sep-23	65	Deliver Material - Exterior Skin																																				
<b>MECH</b>						234	05-Jul-22	07-Jun-23	161	<b>MECH</b>																																
SUB-1040	Generate Shop Drawings - Mech	15	05-Jul-22	25-Jul-22	315	Generate Shop Drawings - Mech																																				

█ Remaining Level of Effort   
 █ Actual Work   
 █ Critical Remaining Work  
█ Actual Level of Effort   
 █ Remaining Work   
 ◆ ◆ Milestone



PCCD Berkeley City College Milvia St New Bldg - 1



Activity ID	Activity Name	Original Duration	Start	Finish	Total Float	2023-2025																													
						2023												2024												2025					
						Jul	Aug	Sep	Oct	Nov	Dec	Jan	Feb	Mar	Apr	May	Jun	Jul	Aug	Sep	Oct	Nov	Dec	Jan	Feb	Mar	Apr	May	Jun	Jul	Aug	Sep	Oct	Nov	Dec
UTL-1110	EBMUD Encroachment Permit to City of Berkeley	10	22-Aug-23	04-Sep-23	247																														
UTL-1120	City of Berkeley issues Encroachment Permit	15	05-Sep-23	25-Sep-23	247																														
UTL-1130	EBMUD Releases for Construction (Coordinate Scheduling w/XL)	30	26-Sep-23	06-Nov-23	247																														
<b>CONSTRUCTION</b>		<b>618</b>	<b>29-Mar-22 A</b>	<b>04-Sep-24</b>	<b>65</b>																														
<b>COORDINATION</b>		<b>135</b>	<b>31-Oct-22</b>	<b>15-May-23</b>	<b>77</b>																														
CRD-0500	Detailed Coordination - Kick-off/Model Development	10	31-Oct-22	11-Nov-22	77																														
CRD-1000	Detailed Coordination - Underground/Underslab	20	14-Nov-22	13-Dec-22	77																														
CRD-1100	Detailed Coordination - Level 1	20	07-Dec-22	05-Jan-23	77																														
CRD-1200	Detailed Coordination - Level 2	20	29-Dec-22	27-Jan-23	77																														
CRD-1300	Detailed Coordination - Level 3	20	23-Jan-23	20-Feb-23	77																														
CRD-1400	Detailed Coordination - Level 4	20	14-Feb-23	13-Mar-23	77																														
CRD-1500	Detailed Coordination - Level 5	20	07-Mar-23	03-Apr-23	77																														
CRD-1600	Detailed Coordination - Level 6	20	28-Mar-23	24-Apr-23	77																														
CRD-1700	Detailed Coordination - Roof Level	15	25-Apr-23	15-May-23	77																														
<b>MOBILIZATION</b>		<b>289</b>	<b>02-Dec-22</b>	<b>25-Jan-24</b>	<b>144</b>																														
MOB-1000	Mobilize for Soft Demolition	5	02-Dec-22	08-Dec-22	55																														
MOB-1010	Set Up Site Perimeter and Traffic Control	10	09-Dec-22	22-Dec-22	55																														
MOB-1020	Mobilize Field Offices	5	09-Dec-22	15-Dec-22	82																														
<b>MANHOIST</b>		<b>176</b>	<b>27-Apr-23</b>	<b>05-Jan-24</b>	<b>35</b>																														
MOB-H100	Place Hoist Foundation	10	27-Apr-23	10-May-23	196																														
MOB-H200	Install Hoist - Levels 1 and 2	2	18-May-23	19-May-23	191																														
MOB-H300	Jump Hoist - Levels 3 and 4	1	14-Jun-23	14-Jun-23	175																														
MOB-H400	Jump Hoist - Levels 5 and 6	1	11-Jul-23	11-Jul-23	158																														
MOB-H500	Tear Down Hoist	1	05-Jan-24	05-Jan-24	35																														
<b>CONCRETE PLACING BOOM</b>		<b>52</b>	<b>08-May-23</b>	<b>20-Jul-23</b>	<b>57</b>																														
MOB-B100	Erect Concrete Placing Boom - Level 4	2	08-May-23	09-May-23	50																														
MOB-B200	Jump Placing Boom - Roof	1	30-May-23	30-May-23	37																														
MOB-B300	Dismantle Placing Boom	1	20-Jul-23	20-Jul-23	57																														
<b>STAIRS AND SCAFFOLD</b>		<b>179</b>	<b>28-Apr-23</b>	<b>11-Jan-24</b>	<b>111</b>																														
MOB-A100	Set Temp Stairs - South	2	28-Apr-23	01-May-23	46																														
MOB-A200	Set Temp Stairs - North	2	28-Apr-23	01-May-23	46																														
MOB-A300	Set Scaffold - North	3	08-Aug-23	10-Aug-23	54																														
MOB-A400	Set Scaffold - West	2	08-Aug-23	09-Aug-23	117																														
MOB-A500	Dismantle Temp Stairs - South	2	05-Oct-23	06-Oct-23	96																														
MOB-A700	Dismantle Scaffold - West	2	13-Nov-23	14-Nov-23	65																														
MOB-A600	Dismantle Scaffold - North	2	19-Dec-23	20-Dec-23	125																														
MOB-A800	Dismantle Temp Stairs - North	2	10-Jan-24	11-Jan-24	111																														
<b>TOWER CRANE</b>		<b>135</b>	<b>05-May-23</b>	<b>13-Nov-23</b>	<b>53</b>																														
MOB-C100	Crane Erection/Mobilization	2	05-May-23	06-May-23	73																														
MOB-C200	Crane Dismantling	2	10-Nov-23	13-Nov-23	53																														
<b>SPIDER CRANE</b>		<b>118</b>	<b>08-Aug-23</b>	<b>25-Jan-24</b>	<b>144</b>																														
MOB-C300	Lift Spider Crane to Roof	1	08-Aug-23	08-Aug-23	120																														
MOB-C400	Remove Spider Crane	1	25-Jan-24	25-Jan-24	144																														
<b>PHASE 1 - DEMOLITION</b>		<b>416</b>	<b>29-Mar-22 A</b>	<b>15-Nov-23</b>	<b>267</b>																														
DMO-2100	Hazardous Material Abatement - Phase 1 Demo	10	14-Dec-22	28-Dec-22	52																														
DMO-2200	Hazardous Material Final Clearance - Phase 1 Demo	2	29-Dec-22	30-Dec-22	52																														
DMO-2400	Soft Demolition - Phase 1 Demo	10	03-Jan-23	17-Jan-23	52																														

█ Remaining Level of Effort   
 █ Actual Work   
 █ Critical Remaining Work  
█ Actual Level of Effort   
 █ Remaining Work   
 ◆ ◆ Milestone

PCCD Berkeley City College Milvia St New Bldg - 1



Activity ID	Activity Name	Original Duration	Start	Finish	Total Float	2023												2024					2025																																			
						Jul	Aug	Sep	Oct	Nov	Dec	Jan	Feb	Mar	Apr	May	Jun	Jul	Aug	Sep	Oct	Nov	Dec	Jan	Feb	Mar	Apr	May	Jun	Jul	Aug	Sep	Oct	Nov	Dec	Jan																						
DMO-2500	Completion of Soft Demolition Scope on City Building	0		17-Jan-23	52																																																					
DMO-2600	Structural Demolition - Phase 1 Demo	10	18-Jan-23	31-Jan-23	52																																																					
DMO-2700	Temporary Protection Removed - Phase 1 Demo	2	01-Feb-23	02-Feb-23	52																																																					
DMO-2800	City Of Berkeley Demo Inspection	1	01-Feb-23	01-Feb-23	53																																																					
DMO-2900	Phase 1 Demo Complete	0		02-Feb-23	52																																																					
<b>PUBLIC RIGHT-OF-WAY UTILITIES</b>		<b>416</b>	<b>29-Mar-22 A</b>	<b>15-Nov-23</b>	<b>267</b>																																																					
<b>GAS &amp; ELECTRIC</b>		<b>193</b>	<b>29-Mar-22 A</b>	<b>30-Nov-22</b>	<b>73</b>																																																					
DMO-1000	PG&E Mobilize for gas shut-off	57	29-Mar-22 A	15-Jun-22 A																																																						
DMO-1100	PG&E Mobilize for electric shut-off	67	29-Mar-22 A	30-Jun-22 A																																																						
DMO-1200	PG&E Engineering & Mobilization for Temp/Permanent Service	75	16-May-22 A	31-Oct-22	61																																																					
DMO-1600	PG&E Demo - Gas Shut-off	0		15-Jun-22 A																																																						
DMO-2300	Utility Disconnection Confirmation - Phase 1 Demo	0		30-Jun-22 A																																																						
DMO-1700	PG&E Demo - Electric Disconnect	0		30-Jun-22 A																																																						
DMO-2000	PG&E Temporary/Permanent Power Installation	20	01-Nov-22	30-Nov-22	61																																																					
<b>COMCAST LINE RELOCATION</b>		<b>50</b>	<b>05-Jul-22</b>	<b>13-Sep-22</b>	<b>95</b>																																																					
DMO-1300	Identification of Comcast Line by AT&T (4/26/2022)	15	05-Jul-22	25-Jul-22	95																																																					
DMO-1400	Notify Comcast of Need to Relocate Line	5	26-Jul-22	01-Aug-22	95																																																					
DMO-1500	Comcast Exploration, Preconstruction and Approvals	25	02-Aug-22	06-Sep-22	95																																																					
DMO-1800	Relocate Existing Comcast Line	5	07-Sep-22	13-Sep-22	95																																																					
DMO-1900	Line Relocation Complete	0		13-Sep-22	95																																																					
<b>SEWER LATERAL</b>		<b>10</b>	<b>08-Aug-23</b>	<b>21-Aug-23</b>	<b>329</b>																																																					
DMO-3000	Trench and Install Sewer Lateral (SEE NOTES)	10	08-Aug-23	21-Aug-23	329																																																					
<b>WATER SERVICE</b>		<b>7</b>	<b>07-Nov-23</b>	<b>15-Nov-23</b>	<b>267</b>																																																					
DMO-3100	EBMUD New Water Service Site Utility Installation	7	07-Nov-23	15-Nov-23	247																																																					
DMO-3200	Public Right-Of-Way Utilities Complete (FIX SEQUENCE PERA15700)	0		15-Nov-23	267																																																					
<b>PHASE 2 - BUILDING CONSTRUCTION</b>		<b>403</b>	<b>03-Feb-23</b>	<b>04-Sep-24</b>	<b>35</b>																																																					
<b>SITE PREPARATION</b>		<b>44</b>	<b>03-Feb-23</b>	<b>06-Apr-23</b>	<b>40</b>																																																					
UGP-1000	Mobilize Grading Subcontractor	1	03-Feb-23	03-Feb-23	52																																																					
UGP-1100	Install Level Working Surface	2	03-Feb-23	06-Feb-23	52																																																					
UGP-1600	Tribal Observation	10	08-Feb-23	22-Feb-23	60																																																					
UGP-1700	Paleontological Observation	10	08-Feb-23	22-Feb-23	60																																																					
UGP-2400	Site Preparation Complete	0		06-Mar-23	52																																																					
<b>SHORING BEAMS AND DRILLED PIERS</b>		<b>42</b>	<b>07-Feb-23</b>	<b>06-Apr-23</b>	<b>40</b>																																																					
UGP-1200	Survey Piers and Property Line	1	07-Feb-23	07-Feb-23	52																																																					
UGP-1300	Mobilize Equipment	1	07-Feb-23	07-Feb-23	52																																																					
UGP-1500	Install Shoring Beams and Prep Lagging	5	08-Feb-23	15-Feb-23	52																																																					
UGP-1900	Shoring Beams and Piers Complete	0		15-Feb-23	52																																																					
UGP-1400	Install Piers	5	30-Mar-23	05-Apr-23	40																																																					
UGP-1800	Demobilize Equipment	1	06-Apr-23	06-Apr-23	40																																																					
<b>BUILDING PAD AND SUBGRADE</b>		<b>13</b>	<b>16-Feb-23</b>	<b>06-Mar-23</b>	<b>52</b>																																																					
UGP-2000	Mass Over Excavation w/ Removal of top of Existing Piles	5	16-Feb-23	22-Feb-23	52																																																					
UGP-2100	Install Temp Access Ramp Into Jobsite	5	23-Feb-23	01-Mar-23	52																																																					
UGP-2200	Building Pad Subgrade	2	02-Mar-23	03-Mar-23	52																																																					
UGP-2300	Building Pad Certification	1	06-Mar-23	06-Mar-23	52																																																					
UGP-2500	Building Pad Complete	0		06-Mar-23	52																																																					
<b>SITE UTILITIES</b>		<b>5</b>	<b>08-Mar-23</b>	<b>14-Mar-23</b>	<b>57</b>																																																					
<b>SANITARY SEWER</b>		<b>5</b>	<b>08-Mar-23</b>	<b>14-Mar-23</b>	<b>57</b>																																																					
UGU-1000	Underslab Sanitary Sewer Installation	5	08-Mar-23	14-Mar-23	57																																																					

■ Remaining Level of Effort 
 ■ Actual Work 
 ■ Critical Remaining Work 
 ■ Actual Level of Effort 
 ■ Remaining Work 
  Milestone

PCCD Berkeley City College Milvia St New Bldg - 1



Activity ID	Activity Name	Original Duration	Start	Finish	Total Float	2023												2024												2025					
						2023												2024												2025					
						Jul	Aug	Sep	Oct	Nov	Dec	Jan	Feb	Mar	Apr	May	Jun	Jul	Aug	Sep	Oct	Nov	Dec	Jan	Feb	Mar	Apr	May	Jun	Jul	Aug	Sep	Oct	Nov	Dec
<b>ELECTRICAL</b>						▼ ELECTRICAL ■ Secondary Conduit Installation																													
UGU-2000	Secondary Conduit Installation	5	08-Mar-23	14-Mar-23	52																														
<b>SUBSTRUCTURES</b>						▼ SUBSTRUCTURES ■ Survey Building & GPS Coordinates																													
<b>SURVEY</b>						▼ SURVEY ■ Survey Building & GPS Coordinates																													
UGS-1000	Survey Building & GPS Coordinates	1	07-Mar-23	07-Mar-23	52																														
<b>MAT SLAB</b>						▼ MAT SLAB ■ West Side Formwork																													
UGS-1100	West Side Formwork	5	15-Mar-23	21-Mar-23	52																														
UGS-1200	Rebar	5	07-Apr-23	13-Apr-23	40																														
UGS-1300	Install Crane and Placement System Anchors	5	14-Apr-23	20-Apr-23	43																														
UGS-1400	Overhead Formwork	5	14-Apr-23	20-Apr-23	40																														
UGS-1500	Form Inspection	3	21-Apr-23	25-Apr-23	40																														
UGS-1600	Concrete Placement and Cure	7	26-Apr-23	04-May-23	40																														
<b>SUBSTRUCTURES COMPLETE</b>						▼ SUBSTRUCTURES COMPLETE ◆ Substructures Complete:																													
UGS-1700	Substructures Complete	0		04-May-23	302																														
<b>SUPER STRUCTURE</b>						▼ SUPER STRUCTURE ▼ CONCRETE DECKS																													
<b>CONCRETE DECKS</b>						▼ CONCRETE DECKS ▼ 2nd Floor Deck																													
<b>2nd Floor Deck</b>						▼ 2nd Floor Deck ■ Layout Vertical Concrete - Level 2 ■ Set Vertical Rebar Cages - Level 2 ■ Set Vertical Formwork - Level 2 ■ Vertical Inspection - Level 2 ■ Vertical Concrete Placement - Level 2 ■ Strip Vertical Formwork - Level 2 ■ Install Temporary Decking (Incl. Dropcaps) - Level 2 ■ Install Rebar and Tendons - Level 2 ■ Layout MEPFS Penetrations, Pathways, and Hangers - Level 2 ■ Install MEPFS Penetrations, Pathways and Hangers - Level 2 ■ Horizontal Inspection - Level 2 ■ Horizontal Concrete Placement - Level 2 ■ Stress Tendons - Level 2 ■ Strip Temporary Decking - Level 2 ■ Install Reshore - Level 2 ■ 2nd Floor Deck Complete																													
SSC-2000	Layout Vertical Concrete - Level 2	1	27-Apr-23	27-Apr-23	40																														
SSC-2010	Set Vertical Rebar Cages - Level 2	1	27-Apr-23	27-Apr-23	40																														
SSC-2020	Set Vertical Formwork - Level 2	1	28-Apr-23	28-Apr-23	40																														
SSC-2030	Vertical Inspection - Level 2	1	28-Apr-23	28-Apr-23	40																														
SSC-2040	Vertical Concrete Placement - Level 2	1	01-May-23	01-May-23	40																														
SSC-2050	Strip Vertical Formwork - Level 2	1	02-May-23	02-May-23	40																														
SSC-2060	Install Temporary Decking (Incl. Dropcaps) - Level 2	2	02-May-23	03-May-23	40																														
SSC-2070	Install Rebar and Tendons - Level 2	2	04-May-23	05-May-23	40																														
SSC-2080	Layout MEPFS Penetrations, Pathways, and Hangers - Level 2	1	04-May-23	04-May-23	40																														
SSC-2090	Install MEPFS Penetrations, Pathways and Hangers - Level 2	1	12-May-23	12-May-23	35																														
SSC-2100	Horizontal Inspection - Level 2	1	12-May-23	12-May-23	35																														
SSC-2110	Horizontal Concrete Placement - Level 2	1	15-May-23	15-May-23	35																														
SSC-2120	Stress Tendons - Level 2	1	16-May-23	16-May-23	35																														
SSC-2130	Strip Temporary Decking - Level 2	1	17-May-23	17-May-23	73																														
SSC-2140	Install Reshore - Level 2	1	18-May-23	18-May-23	109																														
SSC-2150	2nd Floor Deck Complete	0		18-May-23	109																														
<b>3rd Floor Deck</b>						▼ 3rd Floor Deck ■ Layout Vertical Concrete - Level 3 ■ Set Vertical Rebar Cages - Level 3 ■ Set Vertical Formwork - Level 3 ■ Vertical Inspection - Level 3 ■ Vertical Concrete Placement - Level 3 ■ Strip Vertical Formwork - Level 3 ■ Install Temporary Decking (Incl. Dropcaps) - Level 3 ■ Install Rebar and Tendons - Level 3 ■ Layout MEPFS Penetrations, Pathways, and Hangers - Level 3 ■ Install MEPFS Penetrations, Pathways and Hangers - Level 3 ■ Horizontal Inspection - Level 3 ■ Horizontal Concrete Placement - Level 3 ■ Stress Tendons - Level 3 ■ Strip Temporary Decking - Level 3																													
SSC-3000	Layout Vertical Concrete - Level 3	1	17-May-23	17-May-23	35																														
SSC-3010	Set Vertical Rebar Cages - Level 3	1	17-May-23	17-May-23	35																														
SSC-3020	Set Vertical Formwork - Level 3	1	18-May-23	18-May-23	35																														
SSC-3030	Vertical Inspection - Level 3	1	18-May-23	18-May-23	35																														
SSC-3040	Vertical Concrete Placement - Level 3	1	19-May-23	19-May-23	35																														
SSC-3050	Strip Vertical Formwork - Level 3	1	23-May-23	23-May-23	35																														
SSC-3060	Install Temporary Decking (Incl. Dropcaps) - Level 3	2	23-May-23	24-May-23	35																														
SSC-3070	Install Rebar and Tendons - Level 3	2	25-May-23	26-May-23	35																														
SSC-3080	Layout MEPFS Penetrations, Pathways, and Hangers - Level 3	1	25-May-23	25-May-23	35																														
SSC-3090	Install MEPFS Penetrations, Pathways and Hangers - Level 3	1	25-May-23	25-May-23	36																														
SSC-3100	Horizontal Inspection - Level 3	1	26-May-23	26-May-23	35																														
SSC-3110	Horizontal Concrete Placement - Level 3	1	29-May-23	29-May-23	35																														
SSC-3120	Stress Tendons - Level 3	1	30-May-23	30-May-23	35																														
SSC-3130	Strip Temporary Decking - Level 3	1	31-May-23	31-May-23	100																														

■ Remaining Level of Effort   
 ■ Actual Work   
 ■ Critical Remaining Work  
■ Actual Level of Effort   
 ■ Remaining Work   
 ◆ ◆ Milestone















PCCD Berkeley City College Milvia St New Bldg - 1



Activity ID	Activity Name	Original Duration	Start	Finish	Total Float	2023												2024												2025					
						2023												2024												2025					
						Jul	Aug	Sep	Oct	Nov	Dec	Jan	Feb	Mar	Apr	May	Jun	Jul	Aug	Sep	Oct	Nov	Dec	Jan	Feb	Mar	Apr	May	Jun	Jul	Aug	Sep	Oct	Nov	Dec
<b>LEVEL 4</b>						LEVEL 4																													
<b>OVERHEAD</b>						OVERHEAD																													
IN-R4000	Layout	2	25-Jul-23	26-Jul-23	44	Layout																													
IN-R4010	Install Core/Priority Walls	5	27-Jul-23	02-Aug-23	48	Install Core/Priority Walls																													
IN-R4020	Install MEPFS Hangers	8	16-Aug-23	25-Aug-23	135	Install MEPFS Hangers																													
IN-R4030	Install HVAC Mains	8	16-Aug-23	25-Aug-23	135	Install HVAC Mains																													
IN-R4040	Install HVAC Piping	8	16-Aug-23	25-Aug-23	135	Install HVAC Piping																													
IN-R4050	Install Plumbing/FS Piping	8	16-Aug-23	25-Aug-23	135	Install Plumbing/FS Piping																													
IN-R4060	Install Electrical	8	25-Oct-23	03-Nov-23	85	Install Electrical																													
IN-R4070	Rough Overhead Complete	0		03-Nov-23	88	Rough Overhead Complete																													
<b>WALLS</b>						WALLS																													
IN-R4080	Frame Walls	5	06-Nov-23	10-Nov-23	88	Frame Walls																													
IN-R4090	Rough-In Wall MEP's	5	13-Nov-23	17-Nov-23	88	Rough-In Wall MEP's																													
IN-R4120	Inspection with Corrections	3	20-Nov-23	22-Nov-23	88	Inspection with Corrections																													
<b>CEILINGS</b>						CEILINGS																													
IN-R4100	Frame Hardlids, Soffits, and Ceilings	5	13-Nov-23	17-Nov-23	88	Frame Hardlids, Soffits, and Ceilings																													
IN-R4110	Install Rough MEPFS	5	16-Nov-23	22-Nov-23	88	Install Rough MEPFS																													
<b>FLOORS</b>						FLOORS																													
IN-R4130	Rough Polish	1	27-Nov-23	27-Nov-23	88	Rough Polish																													
<b>LEVEL 5</b>						LEVEL 5																													
<b>OVERHEAD</b>						OVERHEAD																													
IN-R5000	Layout	2	27-Jul-23	28-Jul-23	44	Layout																													
IN-R5010	Install Core/Priority Walls	5	31-Jul-23	04-Aug-23	46	Install Core/Priority Walls																													
IN-R5020	Install MEPFS Hangers	7	28-Aug-23	05-Sep-23	135	Install MEPFS Hangers																													
IN-R5030	Install HVAC Mains	7	28-Aug-23	05-Sep-23	135	Install HVAC Mains																													
IN-R5040	Install HVAC Piping	7	28-Aug-23	05-Sep-23	135	Install HVAC Piping																													
IN-R5050	Install Plumbing/FS Piping	7	28-Aug-23	05-Sep-23	135	Install Plumbing/FS Piping																													
IN-R5060	Install Electrical	7	06-Nov-23	14-Nov-23	85	Install Electrical																													
IN-R5070	Rough Overhead Complete	0		14-Nov-23	86	Rough Overhead Complete																													
<b>WALLS</b>						WALLS																													
IN-R5080	Frame Walls	5	15-Nov-23	21-Nov-23	86	Frame Walls																													
IN-R5090	Rough-In Wall MEP's	5	22-Nov-23	30-Nov-23	86	Rough-In Wall MEP's																													
IN-R5120	Inspection with Corrections	3	01-Dec-23	05-Dec-23	86	Inspection with Corrections																													
<b>CEILINGS</b>						CEILINGS																													
IN-R5100	Frame Hardlids, Soffits, and Ceilings	5	22-Nov-23	30-Nov-23	86	Frame Hardlids, Soffits, and Ceilings																													
IN-R5110	Install Rough MEPFS	5	29-Nov-23	05-Dec-23	86	Install Rough MEPFS																													
<b>FLOORS</b>						FLOORS																													
IN-R5130	Rough Polish	1	06-Dec-23	06-Dec-23	86	Rough Polish																													
<b>LEVEL 6</b>						LEVEL 6																													
<b>OVERHEAD</b>						OVERHEAD																													
IN-R6000	Layout	2	31-Jul-23	01-Aug-23	44	Layout																													
IN-R6010	Install Core/Priority Walls	5	02-Aug-23	08-Aug-23	44	Install Core/Priority Walls																													
IN-R6020	Install MEPFS Hangers	6	06-Sep-23	13-Sep-23	135	Install MEPFS Hangers																													
IN-R6030	Install HVAC Mains	6	06-Sep-23	13-Sep-23	135	Install HVAC Mains																													
IN-R6040	Install HVAC Piping	6	06-Sep-23	13-Sep-23	135	Install HVAC Piping																													
IN-R6050	Install Plumbing/FS Piping	6	06-Sep-23	13-Sep-23	135	Install Plumbing/FS Piping																													
IN-R6060	Install Electrical	6	15-Nov-23	22-Nov-23	85	Install Electrical																													
IN-R6070	Rough Overhead Complete	0		22-Nov-23	85	Rough Overhead Complete																													

█ Remaining Level of Effort   
 █ Actual Work   
 █ Critical Remaining Work  
█ Actual Level of Effort   
 █ Remaining Work   
 ◆ ◆ Milestone

PCCD Berkeley City College Milvia St New Bldg - 1



Activity ID	Activity Name	Original Duration	Start	Finish	Total Float	2023												2024												2025					
						Jul	Aug	Sep	Oct	Nov	Dec	Jan	Feb	Mar	Apr	May	Jun	Jul	Aug	Sep	Oct	Nov	Dec	Jan	Feb	Mar	Apr	May	Jun	Jul	Aug	Sep	Oct	Nov	Dec
<b>WALLS</b>						<ul style="list-style-type: none"> <li>WALLS</li> <li>Frame Walls</li> <li>Rough-In Wall MEP's</li> <li>Inspection with Corrections</li> </ul>																													
IN-R6080	Frame Walls	5	27-Nov-23	01-Dec-23	85																														
IN-R6090	Rough-In Wall MEP's	5	04-Dec-23	08-Dec-23	85																														
IN-R6120	Inspection with Corrections	3	11-Dec-23	13-Dec-23	85																														
<b>CEILINGS</b>						<ul style="list-style-type: none"> <li>CEILINGS</li> <li>Frame Hardlids, Soffits, and Ceilings</li> <li>Install Rough MEPFS</li> </ul>																													
IN-R6100	Frame Hardlids, Soffits, and Ceilings	5	04-Dec-23	08-Dec-23	85																														
IN-R6110	Install Rough MEPFS	5	07-Dec-23	13-Dec-23	85																														
<b>FLOORS</b>						<ul style="list-style-type: none"> <li>FLOORS</li> <li>Rough Polish</li> </ul>																													
IN-R6130	Rough Polish	1	14-Dec-23	14-Dec-23	85																														
<b>SOFT INTERIOR BUILDOUT</b>						<ul style="list-style-type: none"> <li>SOFT INTERIOR BUILDOUT</li> </ul>																													
<b>LEVEL 1</b>						<ul style="list-style-type: none"> <li>LEVEL 1</li> </ul>																													
<b>WALLS</b>						<ul style="list-style-type: none"> <li>WALLS</li> <li>Install Drywall and Insulation</li> <li>Tape/Top/Finish Drywall</li> <li>Painting</li> <li>MEP Trim</li> <li>Doors/Frames/Hardware</li> <li>Install Finishes and Fixtures</li> </ul>																													
IN-S1000	Install Drywall and Insulation	5	24-Jan-24	30-Jan-24	35																														
IN-S1010	Tape/Top/Finish Drywall	5	31-Jan-24	06-Feb-24	60																														
IN-S1040	Painting	5	07-Feb-24	14-Feb-24	60																														
IN-S1070	MEP Trim	5	15-Feb-24	21-Feb-24	79																														
IN-S1080	Doors/Frames/Hardware	5	15-Feb-24	21-Feb-24	79																														
IN-S1100	Install Finishes and Fixtures	5	22-Feb-24	28-Feb-24	79																														
<b>CEILINGS</b>						<ul style="list-style-type: none"> <li>CEILINGS</li> <li>Install Drywall/Tape/Top/Finish</li> <li>Overhead Painting</li> <li>Install Ceiling Grid</li> <li>Install Tiles, Finishes and Fixtures</li> </ul>																													
IN-S1020	Install Drywall/Tape/Top/Finish	5	31-Jan-24	06-Feb-24	60																														
IN-S1030	Overhead Painting	5	05-Feb-24	09-Feb-24	60																														
IN-S1050	Install Ceiling Grid	5	13-Feb-24	19-Feb-24	60																														
IN-S1130	Install Tiles, Finishes and Fixtures	5	06-Mar-24	12-Mar-24	60																														
<b>FLOORS</b>						<ul style="list-style-type: none"> <li>FLOORS</li> <li>Install Flooring</li> <li>Install Casework</li> <li>Install Partitions and Accessories</li> <li>Final Polish Concrete</li> </ul>																													
IN-S1060	Install Flooring	5	15-Feb-24	21-Feb-24	60																														
IN-S1090	Install Casework	5	20-Feb-24	26-Feb-24	60																														
IN-S1110	Install Partitions and Accessories	5	27-Feb-24	04-Mar-24	60																														
IN-S1120	Final Polish Concrete	1	05-Mar-24	05-Mar-24	60																														
<b>LEVEL 2</b>						<ul style="list-style-type: none"> <li>LEVEL 2</li> </ul>																													
<b>WALLS</b>						<ul style="list-style-type: none"> <li>WALLS</li> <li>Install Drywall and Insulation</li> <li>Tape/Top/Finish Drywall</li> <li>Painting</li> <li>MEP Trim</li> <li>Doors/Frames/Hardware</li> <li>Install Finishes and Fixtures</li> </ul>																													
IN-S2000	Install Drywall and Insulation	5	31-Jan-24	06-Feb-24	35																														
IN-S2010	Tape/Top/Finish Drywall	5	07-Feb-24	14-Feb-24	55																														
IN-S2040	Painting	5	15-Feb-24	21-Feb-24	55																														
IN-S2070	MEP Trim	5	22-Feb-24	28-Feb-24	74																														
IN-S2080	Doors/Frames/Hardware	5	22-Feb-24	28-Feb-24	74																														
IN-S2100	Install Finishes and Fixtures	5	29-Feb-24	06-Mar-24	74																														
<b>CEILINGS</b>						<ul style="list-style-type: none"> <li>CEILINGS</li> <li>Install Drywall/Tape/Top/Finish</li> <li>Overhead Painting</li> <li>Install Ceiling Grid</li> <li>Install Tiles, Finishes and Fixtures</li> </ul>																													
IN-S2020	Install Drywall/Tape/Top/Finish	5	07-Feb-24	14-Feb-24	55																														
IN-S2030	Overhead Painting	5	13-Feb-24	19-Feb-24	55																														
IN-S2050	Install Ceiling Grid	5	20-Feb-24	26-Feb-24	55																														
IN-S2130	Install Tiles, Finishes and Fixtures	5	13-Mar-24	19-Mar-24	55																														
<b>FLOORS</b>						<ul style="list-style-type: none"> <li>FLOORS</li> <li>Install Flooring</li> <li>Install Casework</li> <li>Install Partitions and Accessories</li> <li>Final Polish Concrete</li> </ul>																													
IN-S2060	Install Flooring	5	22-Feb-24	28-Feb-24	55																														
IN-S2090	Install Casework	5	27-Feb-24	04-Mar-24	55																														
IN-S2110	Install Partitions and Accessories	5	05-Mar-24	11-Mar-24	55																														
IN-S2120	Final Polish Concrete	1	12-Mar-24	12-Mar-24	55																														
<b>LEVEL 3</b>						<ul style="list-style-type: none"> <li>LEVEL 3</li> </ul>																													
<b>WALLS</b>						<ul style="list-style-type: none"> <li>WALLS</li> </ul>																													
IN-S3000	Install Drywall and Insulation	5	07-Feb-24	13-Mar-24	69																														

█ Remaining Level of Effort   
 █ Actual Work   
 █ Critical Remaining Work  
█ Actual Level of Effort   
 █ Remaining Work   
 ◆ ◆ Milestone







PCCD Berkeley City College Milvia St New Bldg - 1



Activity ID	Activity Name	Original Duration	Start	Finish	Total Float	2023												2024												2025										
						2023												2024												2025										
						Jul	Aug	Sep	Oct	Nov	Dec	Jan	Feb	Mar	Apr	May	Jun	Jul	Aug	Sep	Oct	Nov	Dec	Jan	Feb	Mar	Apr	May	Jun	Jul	Aug	Sep	Oct	Nov	Dec	Jan				
<b>SECURITY / INTRUSION CONTROL</b>						4	01-May-24	06-May-24	90																															▼ SECURITY / INTRUSION CONTROL
STC-1040	ERRC Devices Installed	1	01-May-24	01-May-24	90																															ERRC Devices Installed				
STC-1060	ERRC System Soft Start Up and Program Dump	1	02-May-24	02-May-24	90																															ERRC System Soft Start Up and Program Dump				
STC-1120	ERRC Devices Programmed, Tested and Device Verification	1	03-May-24	03-May-24	90																															ERRC Devices Programmed, Tested and Device				
STC-1140	ERRC Functional Testing w/ XL	1	06-May-24	06-May-24	90																															ERRC Functional Testing w/ XL				
STC-1180	ERRC System Startup and Testing Complete	0		06-May-24	90																															◆ ERRC System Startup and Testing Complete				
<b>FIRE ALARM</b>						33	01-May-24	17-Jun-24	61																															▼ FIRE ALARM
STC-1090	Fire Alarm System Soft Start Up and Program Dump	2	01-May-24	02-May-24	73																															Fire Alarm System Soft Start Up and Program D				
STC-1150	FA Devices Programmed, Tested and Device Verification	10	03-May-24	16-May-24	73																															■ FA Devices Programmed, Tested and Device				
STC-1300	Fire Alarm Device Verification w/ XL	3	17-May-24	22-May-24	73																															■ Fire Alarm Device Verification w/ XL				
STC-1400	Elevator Recall	2	10-Jun-24	11-Jun-24	61																															Elevator Recall				
STC-1410	Fire Sprinkler Tamper and Flows	1	10-Jun-24	10-Jun-24	61																															Fire Sprinkler Tamper and Flows				
STC-1440	Fire Alarm Functional Testing w/ XL	4	12-Jun-24	17-Jun-24	61																															■ Fire Alarm Functional Testing w/ XL				
STC-1470	Fire Alarm and Suppression Systems Startup and Testing Complete	0		17-Jun-24	61																															◆ Fire Alarm and Suppression Systems St				
<b>LIGHTING CONTROL</b>						19	01-May-24	28-May-24	75																															▼ LIGHTING CONTROL
STC-1080	Lighting and Plugs Energized & Tested	5	01-May-24	07-May-24	43																															■ Lighting and Plugs Energized & Tested				
STC-1210	Lighting Control SUV	3	08-May-24	10-May-24	43																															■ Lighting Control SUV				
STC-1260	Lighting Control Programming	5	13-May-24	17-May-24	43																															■ Lighting Control Programming				
STC-1310	Lighting Control Troubleshooting	3	21-May-24	23-May-24	43																															■ Lighting Control Troubleshooting				
STC-1330	Lighting Control Testing	3	24-May-24	28-May-24	43																															■ Lighting Control Testing				
STC-1350	Lighting Control Startup and Testing Complete	0		28-May-24	75																															◆ Lighting Control Startup and Testing Compl				
<b>MECHANICAL/HVAC</b>						42	01-May-24	28-Jun-24	35																															▼ MECHANICAL/HVAC
<b>BUILDING MANAGEMENT SYSTEM</b>						42	01-May-24	28-Jun-24	35																															▼ BUILDING MANAGEMENT SYSTEM
<b>EQUIPMENT STARTUP</b>						10	01-May-24	14-May-24	35																															▼ EQUIPMENT STARTUP
<b>HVAC EQUIPMENT STARTUP</b>						10	01-May-24	14-May-24	35																															▼ HVAC EQUIPMENT STARTUP
STC-1070	Startup HVAC Equipment (All)	10	01-May-24	14-May-24	35																															■ Startup HVAC Equipment (All)				
<b>TEST AND BALANCE</b>						32	15-May-24	28-Jun-24	35																															▼ TEST AND BALANCE
<b>HVAC TAB</b>						12	15-May-24	31-May-24	35																															▼ HVAC TAB
STC-1280	Controls checkout with Air On	5	15-May-24	22-May-24	35																															■ Controls checkout with Air On				
STC-1290	Controls checkout with Air Off	5	15-May-24	22-May-24	35																															■ Controls checkout with Air Off				
STC-1320	Test and Balance	7	23-May-24	31-May-24	35																															■ Test and Balance				
<b>TAB ITEMS</b>						20	03-Jun-24	28-Jun-24	35																															▼ TAB ITEMS
STC-1370	Fan Finals	5	03-Jun-24	07-Jun-24	35																															■ Fan Finals				
STC-1420	Generate and Submit TAB Report	10	10-Jun-24	21-Jun-24	35																															■ Generate and Submit TAB Report				
STC-1510	TAB Approved	5	24-Jun-24	28-Jun-24	35																															■ TAB Approved				
<b>PLUMBING</b>						6	01-May-24	08-May-24	54																															▼ PLUMBING
<b>DOMESTIC WATER</b>						6	01-May-24	08-May-24	54																															▼ DOMESTIC WATER
<b>DOMESTIC WATER EQUIPMENT STARTUP</b>						6	01-May-24	08-May-24	54																															▼ DOMESTIC WATER EQUIPMENT STARTUP
STC-1110	Domestic Hot Water Recur Pump SUV	1	01-May-24	01-May-24	54																															Domestic Hot Water Recur Pump SUV				
STC-1200	Domestic Hot Water Boiler SU	1	08-May-24	08-May-24	54																															Domestic Hot Water Boiler SU				
<b>DOMESTIC WATER TAB</b>						1	02-May-24	02-May-24	54																															▼ DOMESTIC WATER TAB
STC-1130	Balance Circuit Setters	1	02-May-24	02-May-24	54																															Balance Circuit Setters				
<b>DOMESTIC WATER FLUSH/CHLORINATION</b>						3	03-May-24	07-May-24	54																															▼ DOMESTIC WATER FLUSH/CHLORINATION
STC-1170	DCW and DHW Chlorination	3	03-May-24	07-May-24	54																															■ DCW and DHW Chlorination				
<b>COMMISSIONING</b>						112	29-Feb-24	06-Aug-24	43																															▼ COMMISSIONING
<b>FUNCTIONAL PERFORMANCE TESTING</b>						75	29-Feb-24	13-Jun-24	68																															▼ FUNCTIONAL PERFORMANCE TESTING
STC-1000	Pre-Functional Testing	10	29-Feb-24	13-Mar-24	84																															■ Pre-Functional Testing				
STC-1010	VAV FPTs	5	14-Mar-24	20-Mar-24	84																															■ VAV FPTs				

■ Remaining Level of Effort   
 ■ Actual Work   
 ■ Critical Remaining Work  
■ Actual Level of Effort   
 ■ Remaining Work   
 ◆ ◆ Milestone

