

VERIZON CONDUIT AND MANHOLES CONSTRUCTION REQUIREMENTS

CONDUIT

- 4 in. inside diameter Type C or SCH40 conduit w/ a 36 in. minimum cover.
- Concrete encasement on all ducts.
- Placement of plastic spaces with 2 in. clearances on all sides and located on no less than 6 ft. centers.
- Encasement of conduit with number #6 slump/2500 psi concrete or as determined by Verizon.
- Backfilled with 21A stone required. All tamping and backfilling to be placed in 12 in. lifts or as required, unless otherwise directed by Verizon authorized representative.
- A minimum 3 ft. radius on all bends horizontal & vertical. (6 & 12 ft radius preferred)
- A minimum 1 ft. clearance from other utilities and/or structures.
- Pull lines placed in all ducts.
- Ducts that dead end in trench should be plugged and have an electronic marker placed.
- 4" inside diameter HDPE (High Density Polyethylene) conduit shall be used for all directional bores.
- Any "Limited Access" Highway requires steel casing.
- All conduits will be tied down at 10 ft. intervals to prevent floating.
- Clearances must conform to local, state and federal requirements.

MANHOLES

- All manholes are to be purchased from a Verizon recognized supplier.
- Precast manhole (Size and Type to be determined by Verizon) w/hardware (frame & cover, collar ladder, racking, etc.)
- Maximum distance between manhole is 600' (with bends in conduit run a shorter distance is recommended).
- A minimum 36 in. cover over roof.
- All ducts that dead end in manhole should be plugged.
- All backfill shall be 21A.
- All plans are to be reviewed by Verizon for approval.



NETWORK PLANNING PRODUCT SELECTION NOTICE

DOCUMENT # NP-PS-2007-045, ISSUE #1 ISSUED DATE 07/13/2007

1.0 SUBJECT: Product Selection notification for Verizon (VZ) approved Large Structures, Manholes, Manhole Assemblies, Frames, Covers and Associated Accessories.

Verizon has standardized on **Old Castle** and **Emerson Network Power** to provide Verizon with Large Structures to house electronic equipment. **Old Castle** will provide **Controlled Environmental Vaults (CEV's), Flush Controlled Vaults (CUE's), HUT's and Walk-In Enclosures**. **Emerson Network Power** will provide Verizon with **CUE's**. Verizon has also standardized on **Old Castle** and **AC Miller Concrete Products** to provide Verizon with **Manholes and Associated Accessories**. **East Jordon Iron Works** will provide Verizon with **Manhole Assemblies, Frames and Covers**. The large structures, manholes and associated accessories listed in this flash are the only approved products that can be ordered throughout the Verizon footprint. Old Castle is considered the primary choice for all of Verizon for Manholes and Associated Accessories, since they have 52 plants located throughout the footprint. AC Miller can be considered as a possible alternate for Old Castle, especially in the northeast where their manufacturing facilities are located.

The Manhole Assemblies, Frames and Covers are items used in conjunction with the approved Manholes. The Manhole Assemblies, Frames and Covers listed in this flash are the only approved products that can be ordered throughout the Verizon footprint.

This Product Selection Notice will replace Product Selection Notice NP-PS-2005-019 (Approved Manhole Assemblies, Frames and Covers from East Jordon Ironworks). Methods and Procedures will not be issued for this product. This Product Selection Notice is applicable to all VZ personnel whose responsibilities include the installation and maintenance of the network.

2.0 MANHOLE AND ASSOCIATED ACCESSORIES ORDERING INFORMATION:

Old Castle - Item Description	Material ID #	Part #
PreCast Manholes		
Manhole, Precast A-Type Configuration for 12' X 6' X 7' Terminator Duct Entry- Single Manhole Entry	915992	MH12-6-7-SE
Manhole, Precast A-Type Configuration for 12' X 6' X 7' Terminator Duct Entry- Double Manhole Entry	915993	MH12-6-7-DE
Manhole, Precast A-Type Configuration for 10' X 5' X 7' Terminator Duct Entry	915994	MH10-5-7
Manhole, Precast A-Type Configuration for 4' X 8' X 6' Terminator Duct Entry	915978	MH4-8-6

NOTICE

Not for use or disclosure outside Verizon except under written agreement.



NETWORK PLANNING

DOCUMENT # NP- PSN-2007-045, ISSUE # 1

July 13, 2007

PAGE # 2

Old Castle - Item Description	Material ID #	Part #
Manhole, Precast A-Type Configuration for 4' X 4' X 4' Terminator Duct Entry	915979	MH4-4-4
Manhole, Precast J Knock Out Type Configuration for 6' X 12' X 7' Terminator Duct Entry- Single Manhole Entry	11047991	10-242K/10-242T
Manhole, Precast J Term Type Configuration for 6' X 10' X 7' Terminator Duct Entry- Single Manhole Entry	11047990	10-142T
Manhole, Precast, A-Type Configuration for 5' X 10' X 7' Terminator Duct Entry	11047989	10-120T
Manhole, Precast, J-Type Configuration for 5' X 10' X 7' Terminator Duct Entry	11047988	10-122T
Manhole, Precast, A-Knock Out Configuration for 4' X 8' X 7' Terminator Duct Entry	11047987	10-105T/10-105K
Manhole, Precast, A-Type Configuration for 4' X 8' X 6' Terminator Duct Entry	11047986	10-090T
Manhole, Precast, A-Knock Out Configuration for 4' X 8' X 6' Terminator Duct Entry	11047985	10-090K
Manhole, Precast, J-Term Configuration for 4' X 8' X 6' Terminator Duct Entry	11047984	10-092T
Manhole, Precast, S Knock Out Configuration for 4' X 4' X 4' Terminator Duct Entry	11047983	10-012T
Manhole, Precast, M-Term Configuration for 4' X 4' X 4' Terminator Duct Entry	11047982	10-101T
60"X126"X54" Manhole Bottom	11047967	VER60126MHBOT
60"X126"X24" Manhole Top	11047966	VER60126MHTOP
Racking Pkg 60"X126"	11047965	VER60126RK
EJIW 1820 Cast Iron Cover	11047964	VER1820COV
36"x6" Tall Conc Grade Ring	11047963	VER366GR
8' Hook Type Ladder	11047962	VER8'LAD
Manhole Step	11047961	VER1MHSTP

NOTICE

Not for use or disclosure outside Verizon except under written agreement.



NETWORK PLANNING

DOCUMENT # NP- PSN-2007-045, ISSUE # 1

July 13, 2007

PAGE # 3

Old Castle - Item Description	Material ID #	Part #
72"X144"x39" Manhole Bottom	11047960	VER72144BOT
72"x144"X45" Manhole Top	11047959	VER72144TOP
Racking Package 72"X144"	11047958	VER72144RK
36"X12" Tall Con. Grade Ring	11047957	VER3612GR
52"X160"X36" Side Walk MH	11047956	VER52160SW
52"X160"X6" Slab Top w/(2) 4260 cu yards	11047955	VER52160STW/CV R
Racking Package 52"X160"	11047954	VER52160RK
52"X160"X30" Side Walk MH Bottom	11047953	VER52160SWBOT
52"X160"X36" Side Walk MH Top	11047952	VER52160SWTOP
42"x60" Galvanized Torsion Cover	11047951	VER4260TORCOV
72"X180"X42" Manhole Bottom	11047950	VER72180BOT
72"X180"X42" Manhole Top	11047949	VER72180TOP
Racking Package 72"X180"	11047948	VER72180RK
"V" Vault Manhole	11047947	VER"V"VLT1
Manhole Setting Charge	11047946	VER1SETCHRG
Concrete Collars		
Collar, Concrete 36" ID X 48" OD X 3" High, 38Y-4039-3	915985	36-48-3
Collar, Concrete 36" ID X 48" OD X 9" High, 38Y-4039-9	915986	36-48-9
Collar, Concrete 36" ID X 48" OD X 15" High, 38Y-4039-15	915987	36-48-15

NOTICE

Not for use or disclosure outside Verizon except under written agreement.



NETWORK PLANNING

DOCUMENT # NP- PSN-2007-045, ISSUE # 1

July 13, 2007

PAGE # 4

Old Castle - Item Description	Material ID #	Part #
Collar, Manhole 38Y-4039 12"	915988	38Y-12
Collar, Manhole 38Y-4039 6"	915989	38Y-6
Bracket, Manhole Ladder	915990	612340
6'x12'x7'Terminator Top & Bottom Straight Line	11047944	38Y 4046-1 Option 1
6'x12'x7'Terminator Top & Bottom Group II	11047943	38Y 4046-1 Option 2
6'x12'x7'Terminator Top, Knockout Bottom Straight Line	11047942	38Y 4046-1 Option 3
6'x12'x7'Knockout Top & Bottom Straight Line	11047941	38Y 4046-1 Option 4
6'x12'x7'Terminator Top & Bottom T Type	11047940	38Y 4046-3 Option 1
6'x12'x7'Terminator Top, Knockout Bottom T Type	11047939	38Y 4046-3 Option 2
6'x12'x7'Knockout Top & Bottom T Type	11047938	38Y 4046-3 Option 3
38Y 4049-1 Option 1 6'x12'x10'Terminator All Sections Straight Line	11047937	38Y 4049-1 Option 1
38Y 4049-1 Option 2 6'x12'x10'Terminator All Sections Group II	11047936	38Y 4049-1 Option 2
38Y 4049-3 Option 1 6'x12'x10'T Type Terminator All Sections	11047935	38Y 4049-3 Option 1
38Y 4050-1 Option 1 6'x12'x12'Terminator All Sections Straight Line	11047934	38Y 4050-1 Option 1
38Y 4050-1 Option 2 6'x12'x12'Terminator All Sections Group II	11047933	38Y 4050-1 Option 2
38Y 4050-3 Option 1 6'x12'x12'T-Type Terminator All Sections	11047932	38Y 4050-3 Option 1
Split Bottom6'x12'x7'Manhole-Misc, Split Bottom	11047931	TR38Y40461 -SB
#343 3'x4'x3' w/ 30" or 36" Manhole-Misc, #343	11047930	343 KO
#444 4'x4'x4' w/ Knockouts Manhole Misc, #444	11047929	444 KO
#466 4'x6'x6' w/ Knockouts Manhole Misc, #466	11047928	466 KO
#467 4'x6'x7' w/ Knockouts Manhole Misc, #467	11047927	467 KO
#486 4'x8'x6' Term Base Manhole Misc, #486	11047926	486 Term
#686 6'x8'x6' w/ Knockouts Manhole Misc, #686	11047925	686 KO
#687 6'x8'x7' w/ Knockouts Manhole Misc, #687	11047945	687 KO

NOTICE

Not for use or disclosure outside Verizon except under written agreement.



NETWORK PLANNING

DOCUMENT # NP- PSN-2007-045, ISSUE # 1

July 13, 2007

PAGE # 5

AC Miller Item Description	Material ID #'s	Part #
PreCast Manholes		
Manhole, Precast A-Type Configuration for 12' X 6' X 7' Terminator Duct Entry- Single Manhole Entry	916683	ACM 061207 1AT
Manhole, Precast A-Type Configuration for 12' X 6' X 7' Terminator Duct Entry- Double Manhole Entry	916684	ACM 061207 2AT
Manhole, Precast, A-Type Configuration for 4' X 8' X 6' Terminator Duct Entry	916686	ACM 040806 1AT
Manhole, Precast, A-Type Configuration for 4' X 4' X 4' Terminator Duct Entry	916671	ACM 040404 1AT
Manhole, Precast, A-Type Caisson 6x12x7	11043852	ACM 061207 CA
Manhole, Precast, J-Type Caisson 6x12x7	11043851	ACM 061207 CJ
Manhole, Precast B-Type Caisson 4x8x6	11043850	ACM 040806 CB
Concrete Knockout Duct Entry- option	916673	ACM AK
30" Diameter Manhole Entrance- option	916674	ACM BT
Splayed Duct Termination For All Manhole Sizes (Allow Entrances of up to 20 Ducts)	916675	ACM AS
Overbuild 2 slots, 6' X 12' X 7'	916676	ACM 061207 OB2
Concrete Collars		
Collar, Concrete 36" ID X 48" OD X 3" High, 38Y-4039-3	916677	ACM 100083/01
Collar, Concrete 36" ID X 48" OD X 9" High, 38Y-4039-9	916678	ACM 100084/01
Collar, Concrete 36" ID X 48" OD X 15" High, 38Y-4039-15	916679	ACM 100087/01
Collar, Manhole 38Y-4039 12"	916680	ACM 100086/01
Collar, Manhole 38Y-4039 6"	916681	ACM 100085/01
Bracket, Manhole Ladder	916682	ACM 101534/01

NOTICE

Not for use or disclosure outside Verizon except under written agreement.



NETWORK PLANNING

DOCUMENT # NP- PSN-2007-045, ISSUE # 1

July 13, 2007

PAGE # 6

3.0 CEV, CUE, HUT AND WALK-IN CABINET ORDERING INFORMATION:

Old Castle - Item Description	Material ID #	Part #
Controlled Environmental Vaults & Accessories		
Vault, Controlled Environmental, 30' L X 10' 10" W X 9' H	917236	1030CEV
Vault, Controlled Environmental, 16'L X 6' W X 9' H equipped with air conditioning	917237	616CEV
Vault, Controlled Environmental 16' L X 6' W X 9' H equipped with air conditioning (for unistrut application; New Jersey version) & equipped with 700 238 300 & 700 238 298	11047970	616CEVII
Vault, Controlled Environmental, 24'L X 6' W X 9' H equipped with air conditioning	917238	624CEV
Vault, Controlled Environmental Type II, 24' L X 6' W X 9' H equipped with air conditioning (for unistrut application; New Jersey version) & equipped with 700 238 300 & 700 238 298	11047969	624CEVII
Sheave and Pin for Cable Placing	917239	457600
Pulling Eye Access; Require Actual Strain	917240	617460
Service 100 Amp AC includes Power Transfer Switch & Emergency Generator Outlet	917241	457300
Cord, Emergency Power, 25' 100 amp#2-4 wire equipped with 4100C12W connector (CEV) and 4100P12 Plug (Generator)	917242	457510
Cord, Emergency Power, 50' 100 amp#2-4 wire equipped with 4100C12W connector (CEV) and 4100P12 Plug (Generator)	917243	457515
Cord, Emergency Power, 25' 30 amp#10-4 wire equipped with 4100C12W connector (CEV) and 2711 Plug (Generator)	917244	457490
Cord, Emergency Power, 50' 30 amp#10-4 wire equipped with 4100C12W connector (CEV) and 2711 Plug (Generator)	917245	457500
Cord, Emergency Power, 25' 30 amp#10-4 wire equipped with CS-6365 (50 amp) connector (CEV) and 2711 Plug (Generator)	917246	457450
Cord, Emergency Power, 25' 50 amp	917247	457405
Collar, Concrete, 4' High for 16' CEV and 24' CEV (40" to 48")	917249	4-1624CEV
Collar, Concrete, 3' High for 16' CEV and 24' CEV (28" to 40")	917248	3-1624CEV

NOTICE

Not for use or disclosure outside Verizon except under written agreement.



NETWORK PLANNING

DOCUMENT # NP- PSN-2007-045, ISSUE # 1

July 13, 2007

PAGE # 7

Old Castle - Item Description	Material ID #	Part #
CEV Options		
Ladder Overhead Cable 16'	917250	454015
Ladder Overhead Cable 24'	917251	454020
Unistrut In Floor 16'	917252	454025
Unistrut In Floor 24'	917204	454030
Floor Tile 16'	917205	458100
Floor Tile 24'	917253	458000
Wiring & Outlet for Generators	917254	457610
Emergency Generator Housing	917255	456620
Seal Cable Entrance 2"	917256	621423
Nipples Pipe Galvanized 4" X 4"	917257	615825
Filter Air Dust Pleated FME 40 20" X 20" X 4"	917258	609470
Filter Air Dust Pleated FME 40 16" X 20" X 2"	917206	609500
4" Cable Ducts (FSCS-400-CEV) Excess 6 Ducts	917259	603805
Plug Cable Duct- OZ Gedney FSCS-45-CEV	917260	621421
Plug Cable Duct CSBG-500P-1	917261	621418
OZ Gedney Seal FSCS-55-CEV- SEG (Segmented- 5")	917262	621417
Power Entrance Relocation To Any Other Location in CEV	917468	457950C
Shielded-On Evaporators 4" on Air Conditioner Ceiling Units	917263	621429
Karnack Waterproofing (Tar)	917264	457975
Drip Gutter Around Opening For Hatch Area	917265	616620
Special Inspection; Industrialized Building Commission (IBC)	917469	456745C

NOTICE

Not for use or disclosure outside Verizon except under written agreement.



NETWORK PLANNING

DOCUMENT # NP- PSN-2007-045, ISSUE # 1

July 13, 2007

PAGE # 8

Old Castle - Item Description	Material ID #	Part #
Flush Controlled Environmental Vaults & Options		
Vault, Flush Controlled Environmental with Interior Dimensions 16' L X 6' W X 9' H	917266	616CEMH
Vault, Flush Controlled Environmental with Interior Dimensions 24' L X 6' W X 9' H	917267	624CEMH
Ducts Special Cable	917268	458410
Grate Dip Gutter Under	917269	458405
Switch 200 Amp Transfer	917270	458415
Box Delta	917271	458420
Inlet 200 Amp (Generator)	917272	458425
Inlet 100 Amp (Generator)	917273	458423
Above Ground Electronic Equipment Enclosures (Huts)		
PCH 1- Interior Dimensions 13' 6" L X 10' W X 8' 2" H	917274	PB10-14
PCH 2- Interior Dimensions 16' 6" L X 10' W X 8' 2" H	917207	PB10-17
PCH 3- Interior Dimensions 19' L X 13' 8" W X 8' 2" H	917208	PB20-14
Hut Options		
Relocation of Power Inlets	917209	457950
Brick Veneer- Panels	917210	621437
Brick Veneer- Full	917211	621438
Brick Preparation	917212	456909
Exposed Aggregate- Panels	917213	456920
Exposed Aggregate- Full	917214	456921
Peaked Roof	917215	621227

NOTICE

Not for use or disclosure outside Verizon except under written agreement.



NETWORK PLANNING

DOCUMENT # NP- PSN-2007-045, ISSUE # 1

July 13, 2007

PAGE # 9

Old Castle - Item Description	Material ID #	Part #
Vinyl Sided	917216	621432
Vinyl Preparation	917217	621451V
Cedar Shake- Full	917218	621436
Cedar Shake Preparation	917219	621451C
Aluminum Sided	917220	621430
Aluminum Preparation	917221	621451A
Special Inspection of Huts (IBC)	917222	456745
Insulation option- PCH 1	917223	453230
Insulation option- PCH 2	917224	453232
Insulation option- PCH 3	917225	453234
Cross Connect Cabinet	917226	456640
Walk-In Cabinet		
Cabinet Walk-In, Concrete	917203	CEC2010
Brick Veneer- Full	87270420	621440
Brick Preparation	917227	456908
Exposed Aggregate- Full	917228	456923
Peaked Roof	917229	621230
Vinyl Sided	917230	621445
Vinyl Preparation	917231	456915V
Cedar Shake- Full	917232	621447
Cedar Shake Preparation	917233	456915C
Aluminum Sided	917234	621442
Aluminum Preparation	917235	456915A

NOTICE

Not for use or disclosure outside Verizon except under written agreement.



NETWORK PLANNING

DOCUMENT # NP- PSN-2007-045, ISSUE # 1

July 13, 2007

PAGE # 10

Emerson - Item Description	Material ID #	Part #
EMERSON CUE & ACCESSORIES		
CUE WITHOUT INSULATION	917888	F1004261
CUE WITH INSULATION	917889	F1004332
AIR CONDITIONER WITH ECONOMIZER 24,000 BTU SECOND UNIT OPTIONAL	917890	F1004334
CROSS CONNECT 3600PR CUE INSTALLED	917891	F2000024
CROSS CONNECT 9000PR CUE INSTALLED	917895	F1003990
CROSS-CONNECT 4400 PAIR ADC/KRONE DSL APPLCIATION WITH 3M CBM4005 CONNECTORS	11004140	F1005254
CROSS-CONNECT 5500 PAIR ADC/KRONE DSL APPLCIATION WITH 3M CBM4005 CONNECTORS	11004141	F1005256
CROSS-CONNECT 4400 PAIR ADC/KRONE DSL APPLCIATION WITH 710 CONNECTORS	11006972	F1005681
CROSS-CONNECT 5500 PAIR ADC/KRONE DSL APPLCIATION WITH 710 CONNECTORS	11006971	F1005682
RIGHT DOOR FOR CUE X-CONN	11017819	F1006854
CABINET X-CONNECT CUE 2400PR WITH ADC/KRONE BLOCKS 1500PR PG/CP 900PR DSL WITH 10' STUBS AND 6 PORTS	11027531	F1007337

NOTICE

Not for use or disclosure outside Verizon except under written agreement.



NETWORK PLANNING

DOCUMENT # NP- PSN-2007-045, ISSUE # 1

July 13, 2007

PAGE # 11

4.0 MANHOLE ASSEMBLIES, FRAMES AND COVERS ORDERING INFORMATION:

East Jordan Iron Works - Item Description	Material ID #	Part #
Assembly, Manhole & Cover 27B	11000167	180500
Assembly, Manhole & Cover 27SB	11000168	180200
Assembly, Manhole & Cover 27G/with Gasket Non-Locking	87028666	180519
Assembly, Manhole & Cover 27SG/with Gasket Non-Locking	87028677	180219
Cover, Manhole G for 27B/27SB/ with Gasket	87028672	180620
Assembly, Manhole & Cover 30B	87028648	182500
Assembly, Manhole & Cover 30SB	87028645	182000
Cover, Manhole G for 30B/30SB with Gasket	87028673	181120
Assembly, Manhole ECS STD 30B	11048281	182515
Assembly, Manhole ECS STD 30SB	87028676	182015
Assembly, Manhole ECS STD 30G/ with Gasket	11048280	182516
Assembly, Manhole ECS STD 30SG/ with Gasket	11048279	182080
Cover, ECS Manhole G for 30B/30SB with Gasket	11048278	181009
Assembly, Manhole ECS STD A	11048277	183005
Cover, Manhole ECS STD A	11048276	183023
Bar, Locking ECS STD A	11048275	183006
Assembly, Manhole ECS STD SA	11048274	183004
Frame, Manhole B27	11048273	180511
Cover, Manhole B27	87028647	180528
Frame, Manhole B30, G30, H30	87028675	182511
Cover, Manhole B30	87028646	181022
Frame, Manhole SB27	542303	180211
Frame, Manhole SB30	11000169	182011
Cover, Manhole H27	11048272	180622

NOTICE

Not for use or disclosure outside Verizon except under written agreement.



NETWORK PLANNING

DOCUMENT # NP- PSN-2007-045, ISSUE # 1

July 13, 2007

PAGE # 12

East Jordon Iron Works - Item Description	Material ID #	Part #
Cover, Manhole H30	87028674	181123
Assembly, Frame & Cover, 30G, Non- Locking Assembly	87028667	182517
Assembly, Frame & Cover, 30SG, Non- Locking Assembly	87028669	182019
Cover, Inner Pan, ECS STD A & SA	11048271	183051
Cover, Inner Manhole A30	87028662	93300
Cover Locking Manhole D with 2 bolts	87028665	181197
Cover Manhole R30	87028650	110627
Frame Manhole SG30	87028676	182015
Assembly, Frame & Cover, 30SB, Bolted w/Logo	11056375	182054
Assembly, Frame & Cover, 30B, Bolted w/Logo	11056374	182551
Manhole Accessories		
Kit, 27" C Manhole Cover Gasket- for G & H Type Manhole Assemblies	11000170	180682
Kit, 30" C Manhole Cover Gasket- for G & H Type Manhole Assemblies	87031213	181182
Sump C Manhole	87028661	99865000
Bolt Stainless Steel Security Manhole Cover Penta HD 5/8" X 3-1/4"	87028678	180585
Ring Manhole Extension 33" Diameter with 2" Riser- for the 27A & 27SA Manhole Assemblies	87028653	93270
Ring Manhole Extension 29" Diameter with 2" Riser- for the 27B & 27SB Manhole Assemblies (Cast Iron)	87028655	180592
Ring Manhole Extension 29" Diameter with 2" Riser- for the 27B & 27SB Manhole Assemblies (Steel)	11000171	2913179
Ring Manhole Extension 29" Diameter with 1" Riser- for the 27B & 27SB Manhole Assemblies	11000172	2913178
Ring Manhole Extension 33" Diameter with 1-1/2" Riser- for the 27A & 27SA Manhole Assemblies	11000173	93271

NOTICE

Not for use or disclosure outside Verizon except under written agreement.



NETWORK PLANNING

DOCUMENT # NP- PSN-2007-045, ISSUE # 1

July 13, 2007

PAGE # 13

East Jordan Iron Works - Item Description	Material ID #	Part #
Ring-Manhole 30b 1-1/2"	11027381	M7319414108A
Ring-Manhole 30b 1"	11027382	M7319414158A
Ring Extension 1" ECS STD A & SA	11048270	2913321
Ring Extension 1-1/2" ECS STD A & SA	11048269	2913322
Ring Extension 2" ECS STD A & SA	11048268	2913323
Ring Extension Manhole 27A with 3" Rise	87028654	93273
Ring Extension Manhole 27B with 1-1/2" Rise	11000174	2923305
Ring Extension Manhole 27B with 2-1/2" Rise	11000175	180594
Ring Extension Manhole 27B with 3" Rise	87028656	180593
Ring Extension Manhole 30A with 2" Rise	87028657	93310
Ring Extension Manhole 30A with 3" Rise	87028658	93315
Ring Extension Manhole 30B with 2" Rise	87028659	181092
Ring Extension Manhole 30B with 3" Rise	87028660	181093
Removable Curb 36-inch	917198	CU-MH-18-000-A
Logo, Verizon for manhole assemblies	11000176	VZLOGO
Cover, Manhole 27B, Non-Slip (A2) Verizon Design for 27" Manhole Assemblies	11004902	180531
Cover, Manhole 30B, Non-Slip (A2) Verizon Design for 30" Manhole Assemblies	11004904	181045
Pan, Locking, 29" for 27" (27B) Manhole Assemblies	11004901	180515
Pan, Locking, 32" for 30" (30B) Manhole Assemblies	11004903	181015
Pan, Locking, 38" for 36" Empire City Subway Manhole Assemblies	11004905	183015
Pan Locking 34" for 27" (27 S/A)	11004913	93275
Pan Locking 37" for 30" (30 S/A)	11004914	93317

NOTICE

Not for use or disclosure outside Verizon except under written agreement.



NETWORK PLANNING

DOCUMENT # NP- PSN-2007-045, ISSUE # 1

July 13, 2007

PAGE # 14

5.0 CONTACTS:

VZ CFT AREA Evaluation Team Leaders:

Network Planning	Cliff Ginn	215-591-6238	Total Verizon Footprint
Corporate Sourcing	Kathy O'Neil	703-974-0547	Total Verizon Footprint
National Operations	Wes Wolfert	215-266-9579	Total Verizon Footprint

Vendor Contacts:

Old Castle	Mike Yabroski	860-673-3291
Emerson Network Power	Jeff Theis	703-629-2743
AC Miller Concrete Products	John Rutkowski	610-999-5640
East Jordon Iron Works	Bill Austin	231-536-4407

Prepared:

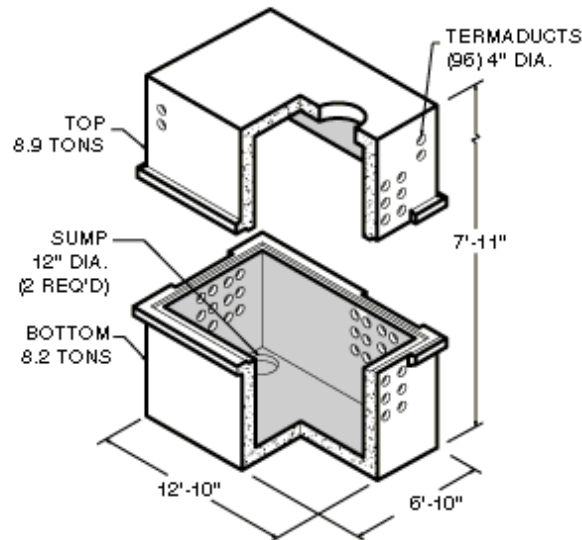
Original Signed By:	Telephone #	Date
Cliff Ginn - Sr. Planner	215-591-6238	07/13/2007

Approved:

Original Signed By:	Telephone #	Date
Patrick Anderson – Manager –Access Plng	301-236-2592	07/13/2007

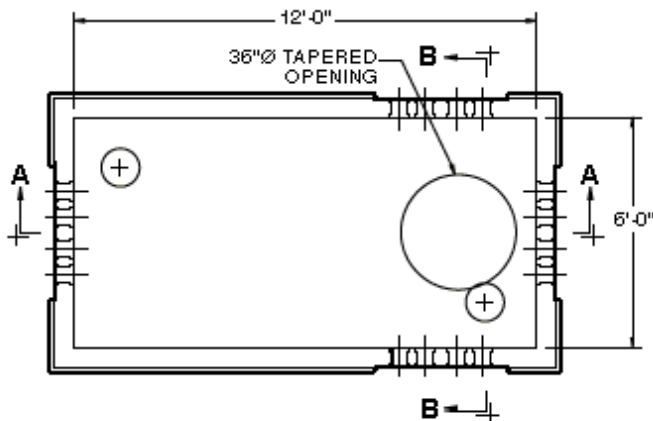
NOTICE

Not for use or disclosure outside Verizon except under written agreement.



NOTE:
KNOCKOUT SECTIONS AVAILABLE
IN PLACE OF DUCT TERMINATORS

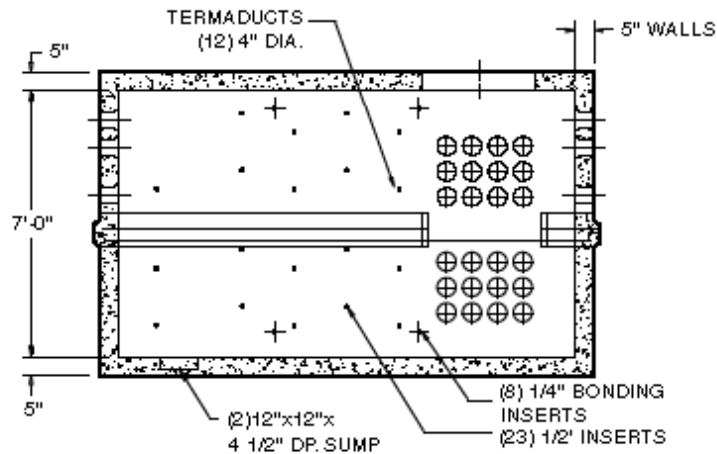
Utility Vault
Model No. BA6X12-7T
6'-0" x 12'-0" x 7'-0"
Two Piece Design



PLAN VIEW

- NOTES:
1. CONCRETE - 5,000 P.S.I.
MINIMUM STRENGTH
 2. STEEL REINFORCEMENT -
ASTMA-15, GRADE 60
 3. COVER TO STEEL - 1" MINIMUM
 4. VAULTS ARE DESIGNED
TO MEET AST MC858 AND ACI 318
 5. EARTH COVER- 0 TO 5 FEET
 6. CONSTRUCTION JOINT
- SEALED WITH 1" DIA.
BUTYL RUBBER OR EQUIVALENT

Utility Vault
Model No. BA6X12-7T
6'-0" x 12'-0" x 7'-0"
Two Piece Design



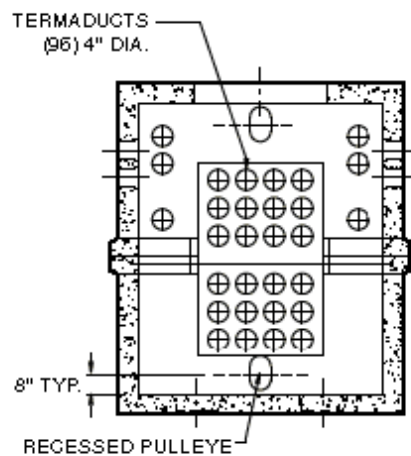
SECTION A - A

Utility Vault

Model No. BA6X12-7T

6'-0" x 12'-0" x 7'-0"

Two Piece Design



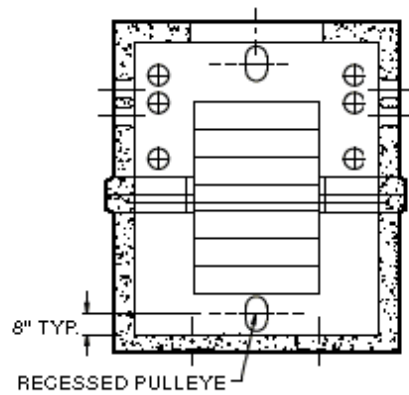
**OPTION 2
SECTION B - B**

Utility Vault

Model No. BA6X12-7T

6'-0" x 12'-0" x 7'-0"

Two Piece Design



OPTION 1
SECTION B - B

Utility Vault
Model No. BA6X12-7T
6'-0" x 12'-0" x 7'-0"
Two Piece Design