

MATCHLINE STA: 62+00 - SEE SHEET A12.2

FOR SANITARY CONST. ONLY

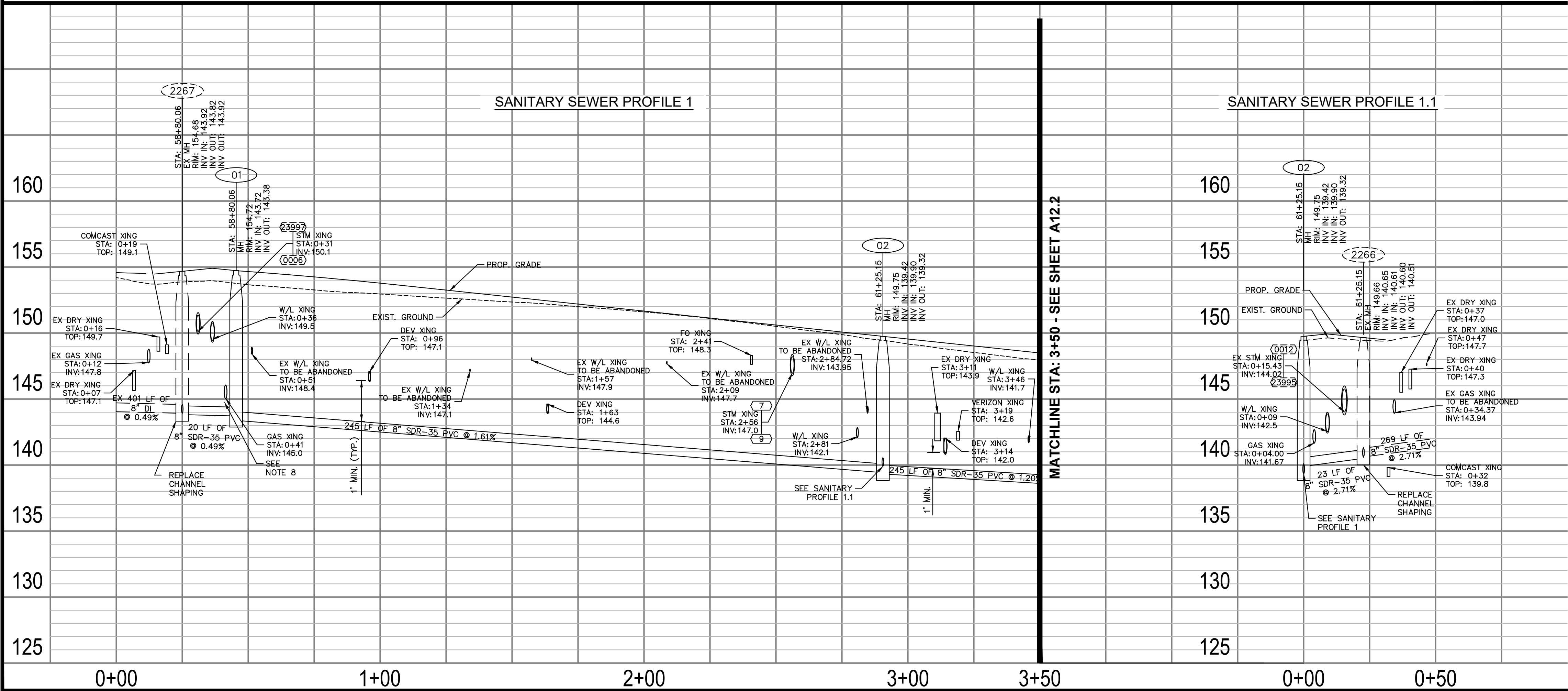
- NOTES:
- PROFILE STATIONING ALONG CENTERLINE OF PIPE
 - SEE SERIES 10 FOR FULL UTILITY NETWORK PLAN VIEWS.
 - WATERLINE TO BE INSTALLED, TESTED, AND PUT INTO SERVICE PRIOR TO STORM AND SANITARY PIPE INSTALLATION. CONTRACTOR TO CONFIRM EXISTING WATERLINE IS DECOMMISSIONED PRIOR TO REMOVAL. DESIGN ASSUMES THAT THE PROPOSED WATERLINE IS GENERALLY INSTALLED PRIOR TO OTHER UTILITIES TO MITIGATE CONFLICTS.
 - CONTRACTOR TO MAINTAIN POSITIVE DRAINAGE THROUGHOUT THE PROJECT LIMITS TO THE EXTENT POSSIBLE AT ALL TIMES. STORM SEWER SHALL BE INSTALLED AND SEQUENCED TO MINIMIZE DOWN TIME REQUIRED FOR TIE-IN OR CUT-OVER OPERATIONS. SHOULD PUMP-AROUNDS BE REQUIRED TO COMPLETE STORM SEWER INSTALLATIONS, THEY WILL BE INCIDENTAL TO THE COST OF STORM PIPE AND STRUCTURE INSTALLATION.
 - CONTRACTOR TO FIELD VERIFY LOCATION AND ELEVATION OF EXISTING UNDERGROUND UTILITIES ADJACENT TO OR CROSSING PROPOSED STORM SEWER PIPE AND STRUCTURES PRIOR TO INSTALLATION.
 - OFFSET OF EXIST. FIBER LINE AND LIGHTING LINE MAY BE REQUIRED FOR PROPOSED IMPROVEMENTS. SEE DETAIL SHEET A2.5.
 - WASHINGTON GAS PROPOSED LINES ARE SHOWN FOR REFERENCE ONLY AND ARE TO BE INSTALLED BY OTHERS. REFERENCE WR #3091840 OR EXCAVATION #EXCV21-01093 FOR DETAILS.
 - WHERE MINIMUM VERTICAL CLEARANCES BETWEEN UTILITIES CANNOT BE MET, CONTRACTOR TO INSTALL CONCRETE PIERS AND/OR REINFORCED CONCRETE CRADLE PER ARLINGTON COUNTY STANDARD DRAWING M-7.0

PROFILE VIEW LEGEND

- EXISTING PIPE/STRUCTURE TO REMAIN
PROPOSED PIPE/STRUCTURE

PLAN VIEW LEGEND

- PROP. SDR-35 PVC SANITARY SEWER PIPE
PROP. SANITARY SEWER MANHOLE
EXISTING SANITARY SEWER MANHOLE
PROP. SANITARY STRUCTURE NO.
EXISTING SANITARY STRUCTURE NO.
FILL & ABANDON UTILITY LINE
REMOVE UTILITY LINE



ARLINGTON COUNTY, VIRGINIA
DEPARTMENT OF ENVIRONMENTAL SERVICES

SANITARY PLAN AND PROFILES COLUMBIA PIKE - ROUTE 244 MULTIMODAL STREET IMPROVEMENTS SEGMENT A

SCALE: HOR. 1" = 25' VERT. 1" = 5' SHEET: A12.1 of A12.2



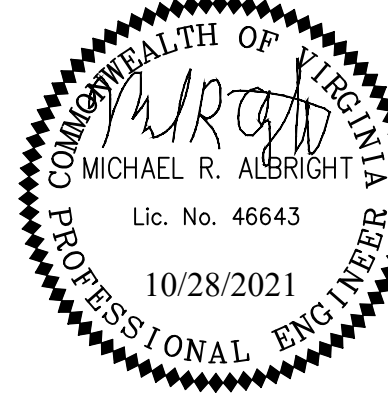
DEPARTMENT OF
ENVIRONMENTAL SERVICES

Facilities & Engineering Division
Engineering Bureau
2100 Clarendon Boulevard, Suite 813
Arlington, VA 22201
Phone: 703.228.3629
Fax: 703.228.3606

Kimley»Horn
Kimley-Horn
and Associates, Inc.

© 2021 KIMLEY-HORN AND ASSOCIATES, INC.
11400 Commerce Park Drive, Suite 400
Reston, Virginia 20191
Phone: 703-474-1500
Fax: 703-474-1500

Seal



Approvals Date

Design Team Engineer Supervisor

Construction Management Supervisor

Water, Sewer, Streets Bureau Chief

Transportation Director

Project Manager

Revisions Date

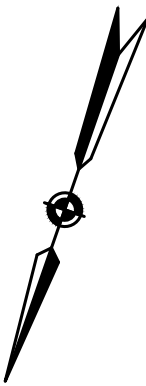
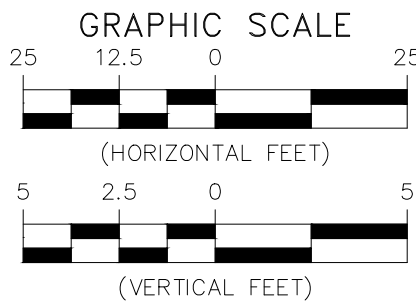
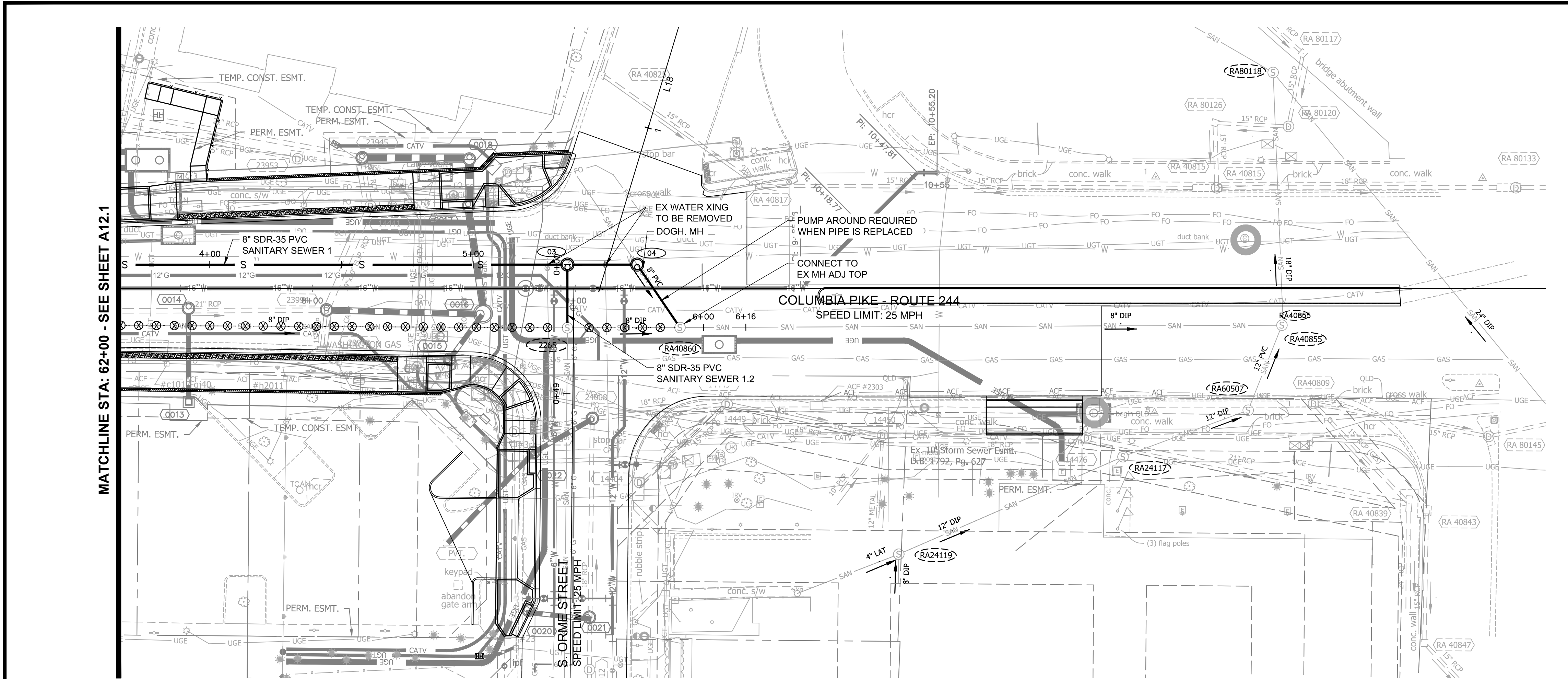
Designed: AAA
Drawn: AAA
Checked: MRA
Miss Utility Transmittal #:

Filename: 010073-A12-SSWR.dwg
Path: C:\Users\pkr\OneDrive\Documents\Projects\A12-SSWR\A12-SSWR.dwg
Plotted: October 28, 2021
Plotted by: Patrick.Husted



DEPARTMENT OF
ENVIRONMENTAL SERVICES

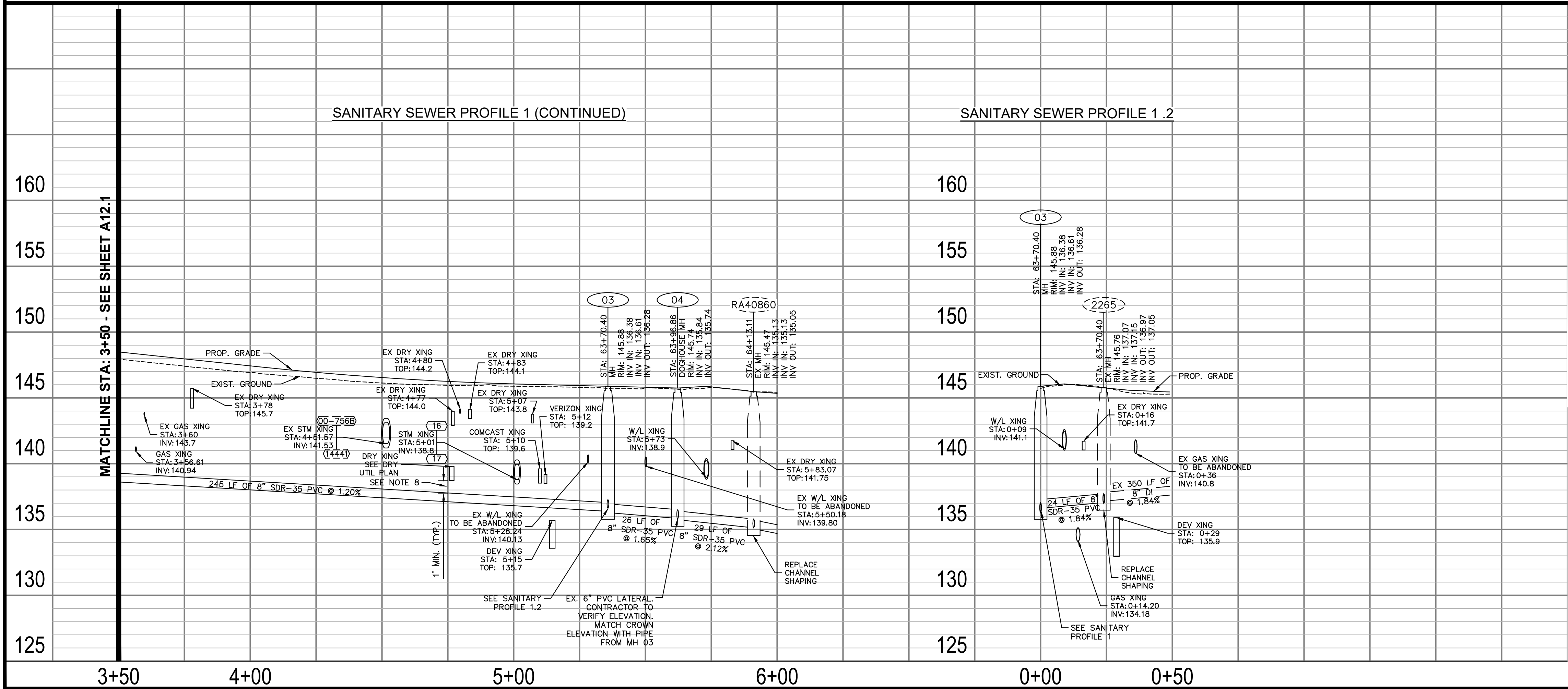
11/23/2021
APPROVAL DATE



FOR SANITARY CONST. ONLY

- NOTES:
- PROFILE STATIONING ALONG CENTERLINE OF PIPE
 - SEE SERIES 10 FOR FULL UTILITY NETWORK PLAN VIEWS.
 - WATERLINE TO BE INSTALLED, TESTED, AND PUT INTO SERVICE PRIOR TO STORM AND SANITARY PIPE INSTALLATION. CONTRACTOR TO CONFIRM EXISTING WATERLINE IS DECOMMISSIONED PRIOR TO REMOVAL. DESIGN ASSUMES THAT THE PROPOSED WATERLINE IS GENERALLY INSTALLED PRIOR TO OTHER UTILITIES TO MITIGATE CONFLICTS.
 - CONTRACTOR TO MAINTAIN POSITIVE DRAINAGE THROUGHOUT THE PROJECT LIMITS TO THE EXTENT POSSIBLE AT ALL TIMES. STORM SEWER SHALL BE INSTALLED AND SEQUENCED TO MINIMIZE DOWN TIME REQUIRED FOR TIE-IN OR CUT-OVER OPERATIONS. SHOULD PUMP-AROUNDS BE REQUIRED TO COMPLETE STORM SEWER INSTALLATIONS, THEY WILL BE INCIDENTAL TO THE COST OF STORM PIPE AND STRUCTURE INSTALLATION.
 - CONTRACTOR TO FIELD VERIFY LOCATION AND ELEVATION OF EXISTING UNDERGROUND UTILITIES ADJACENT TO OR CROSSING PROPOSED STORM SEWER PIPE AND STRUCTURES PRIOR TO INSTALLATION.
 - OFFSET OF EXIST. FIBER LINE AND LIGHTING LINE MAY BE REQUIRED FOR PROPOSED IMPROVEMENTS. SEE DETAIL SHEET A2.5.
 - WASHINGTON GAS PROPOSED LINES ARE SHOWN FOR REFERENCE ONLY AND ARE TO BE INSTALLED BY OTHERS. REFERENCE WR #3091840 OR EXCAVATION #EXCV21-01093 FOR DETAILS.
 - WHERE MINIMUM VERTICAL CLEARANCES BETWEEN UTILITIES CANNOT BE MET, CONTRACTOR TO INSTALL CONCRETE PIERS AND/OR REINFORCED CONCRETE CRADLE PER ARLINGTON COUNTY STANDARD DRAWING M-7.0

- PROFILE VIEW LEGEND
- EXISTING PIPE/STRUCTURE TO REMAIN
 - PROPOSED PIPE/STRUCTURE
- PLAN VIEW LEGEND
- PROP. SDR-35 PVC SANITARY SEWER PIPE
 - PROP. SANITARY SEWER MANHOLE
 - EXISTING SANITARY SEWER MANHOLE
 - PROP. SANITARY STRUCTURE NO.
 - EXISTING SANITARY STRUCTURE NO.
 - FILL & ABANDON UTILITY LINE
 - REMOVE UTILITY LINE



ARLINGTON COUNTY, VIRGINIA
DEPARTMENT OF ENVIRONMENTAL SERVICES

SANITARY PLAN AND PROFILES
COLUMBIA PIKE - ROUTE 244
COLUMBIA PIKE - MULTIMODAL STREET IMPROVEMENTS
SEGMENT A

SCALE: HOR. 1" = 25' VERT. 1" = 5' SHEET: A12.2 of A12.2

ARLINGTON VIRGINIA

DEPARTMENT OF ENVIRONMENTAL SERVICES

Facilities & Engineering Division
Engineering Bureau
2100 Clarendon Boulevard, Suite 813
Arlington, VA 22201
Phone: 703.228.3629
Fax: 703.228.3606

Kimley»Horn
Kimley-Horn
and Associates, Inc.

© 2021 KIMLEY-HORN AND ASSOCIATES, INC.
11400 Commerce Park Drive, Suite 400
Reston, Virginia 20191
Phone: 703-474-1500
Fax: 703-474-1590

Seal

COMMONWEALTH OF VIRGINIA
MICHAEL R. ALBRIGHT
Lic. No. 46643
10/28/2021
PROFESSIONAL ENGINEER

Approvals Date

Design Team Engineer Supervisor

Construction Management Supervisor

Water, Sewer, Streets Bureau Chief

Transportation Director

Project Manager

Revisions	Date

Designed: AAA
Drawn: AAA
Checked: MRA
Miss Utility Transmittal #:

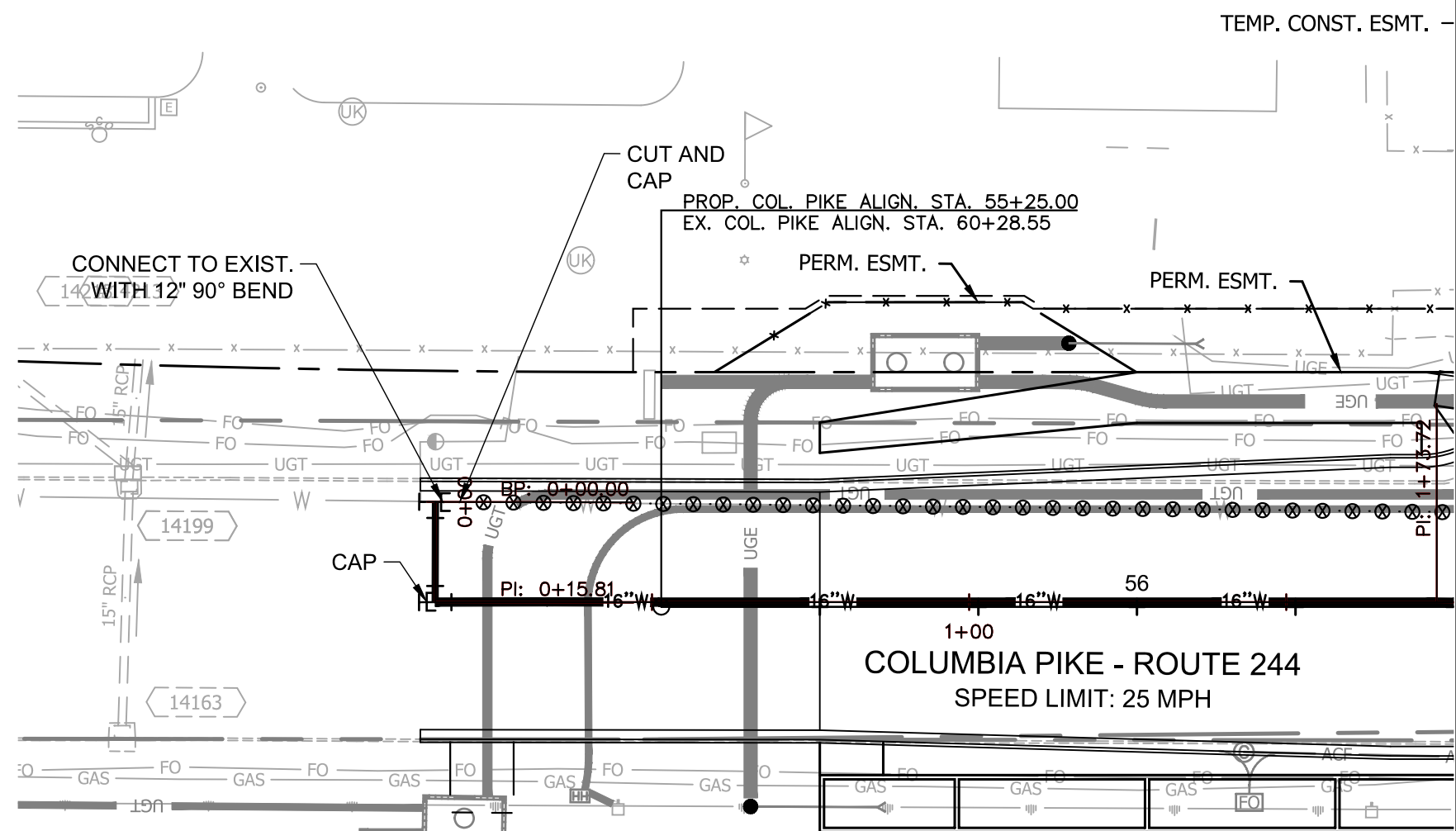
Filename: 010073-A12-SSWR.dwg
Path: Z:\NVA_R00V\11000073_columbia_pike_multimodal_street_improvements\design\graphics
Plotted: October 28, 2021
Plotted by: Patrick.Husted

ARLINGTON VIRGINIA

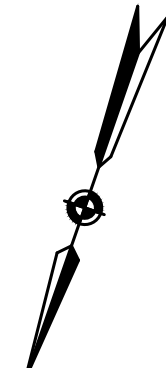
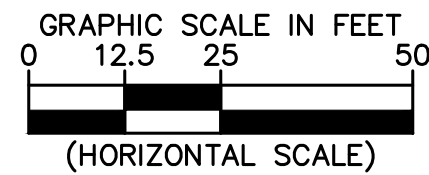
DEPARTMENT OF ENVIRONMENTAL SERVICES

LUIS ARAYA
BUREAU CHIEF, DES - DEVELOPMENT SERVICES

11/23/2021
APPROVAL DATE



MATCHLINE STA: 56+50.00 - SEE SHEET A13.1.1



FOR WATERLINE CONST. ONLY

NOTES:

1. PROFILE STATIONING ALONG CENTERLINE OF PIPE
2. SEE SERIES 10 FOR FULL UTILITY NETWORK PLAN VIEWS.
3. SEE SHEET A13.4 FOR RESTRAINT TABLE
4. WATERLINE TO BE INSTALLED, TESTED, AND PUT IN SERVICE PRIOR TO STORM AND SANITARY PIPE INSTALLATION. CONTRACTOR TO CONFIRM EXISTING WATERLINE IS DECOMMISSIONED PRIOR TO REMOVAL. DESIGN ASSUMES THAT THE PROPOSED WATERLINE IS GENERALLY INSTALLED PRIOR TO OTHER UTILITIES TO MITIGATE CONFLICTS.
5. WHERE MINIMUM VERTICAL CLEARANCES BETWEEN UTILITIES CANNOT BE MET, CONTRACTOR TO INSTALL CONCRETE PIERS AND/OR REINFORCED CONCRETE CRADLE PER ARLINGTON COUNTY STANDARD DRAWING M-7.0
6. WASHINGTON GAS PROPOSED LINES ARE SHOWN FOR REFERENCE ONLY AND ARE TO BE INSTALLED BY OTHERS. REFERENCE WR #3091840 OR EXCAVATION #EXCV21-01093 FOR DETAILS.
7. WHERE MINIMUM VERTICAL CLEARANCES BETWEEN UTILITIES CANNOT BE MET, CONTRACTOR TO INSTALL CONCRETE PIERS AND/OR REINFORCED CONCRETE CRADLE PER ARLINGTON COUNTY STANDARD DRAWING M-7.0

LEGEND

- | | |
|--|-----------------------------|
| | PROP. SERVICE CONNECTION |
| | PROP. 4" WATER PIPE |
| | PROP. 6" WATER PIPE |
| | PROP. 8" WATER PIPE |
| | PROP. 12" WATER PIPE |
| | PROP. VALVE |
| | PROP. FIRE HYDRANT |
| | PROP. REDUCER |
| | PROP. TEE |
| | PROP. CROSS |
| | PROP. 11.25" BEND |
| | PROP. 22.5" BEND |
| | PROP. 45" BEND |
| | PROP. 90" BEND |
| | PROP. WATER METER |
| | PROP. CAP |
| | FILL & ABANDON UTILITY LINE |
| | REMOVE UTILITY LINE |
| | REMOVE VALVE BOX |



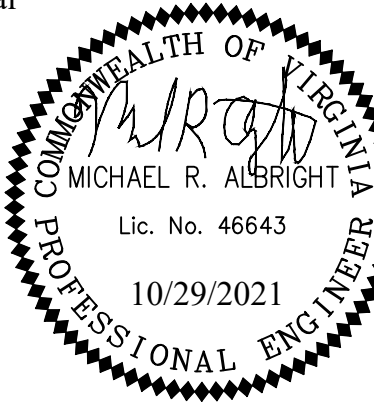
DEPARTMENT OF ENVIRONMENTAL SERVICES

Facilities & Engineering Division
Engineering Bureau
2100 Clarendon Boulevard, Suite 813
Arlington, VA 22201
Phone: 703.228.3629
Fax: 703.228.3606

Kimley»Horn
Kimley-Horn
and Associates, Inc.

© 2021 KIMLEY-HORN AND ASSOCIATES, INC.
11400 Commerce Park Drive, Suite 400
Reston, Virginia 20191
Phone: 703-474-1500
Fax: 703-474-1500

Seal



Approvals _____ Date _____

Design Team Engineer Supervisor _____

Construction Management Supervisor _____

Water, Sewer, Streets Bureau Chief _____

Transportation Director _____

Project Manager _____

Revisions _____ Date _____

Designed: AAA
Drawn: AAA
Checked: MRA
Miss Utility Transmittal #:

Filename: 010073-A-WATERLINE PLAN AND PRO
Path: Z:\NVA_R00V\11000073 Columbia Pike Multimodal Production Task
Design Plansheets
Plotted: October 29, 2021
Plotted by: Patrick.Husted

ARLINGTON COUNTY, VIRGINIA
DEPARTMENT OF ENVIRONMENTAL SERVICES

WATERLINE PLAN AND PROFILES
COLUMBIA PIKE - ROUTE 244
COLUMBIA PIKE - MULTIMODAL STREET IMPROVEMENTS
SEGMENT A
STA. 55+25.00 TO STA. 56+50.00

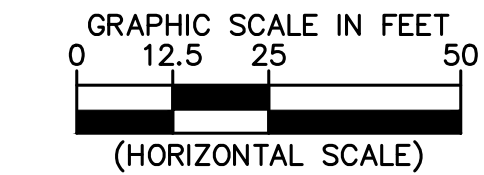
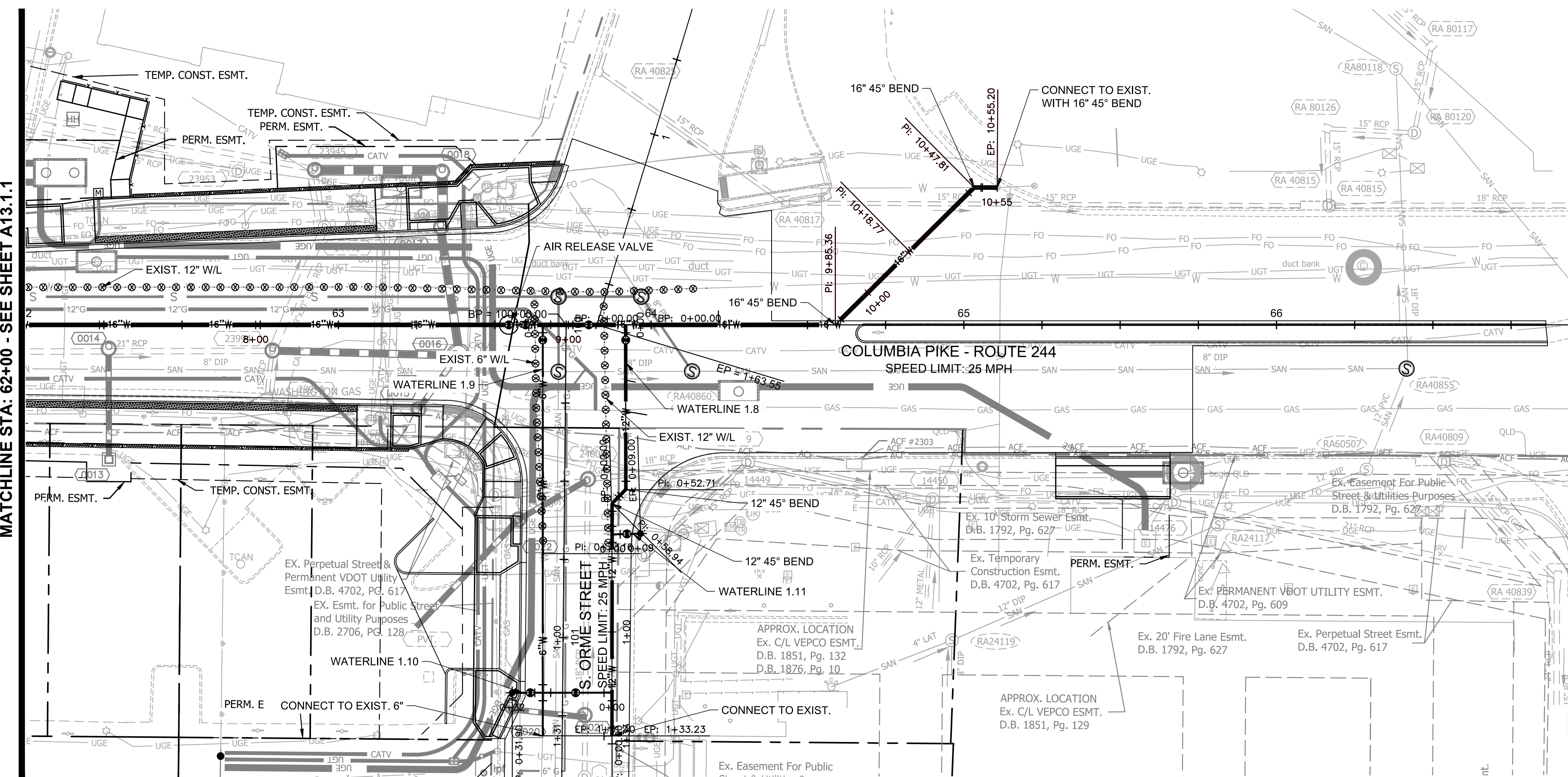
SCALE: HOR. 1" = 25' VERT. 1" = 5' SHEET: A13.1 of A13.4



DEPARTMENT OF ENVIRONMENTAL SERVICES

11/23/2021

APPROVAL DATE



FOR WATERLINE CONST. ONLY

NOTES:

1. PROFILE STATIONING ALONG CENTERLINE OF PIPE
2. SEE SERIES 10 FOR FULL UTILITY NETWORK PLAN VIEWS.
3. SEE SHEET A13.4 FOR RESTRAINT TABLE
4. WATERLINE TO BE INSTALLED, TESTED, AND PUT IN SERVICE PRIOR TO STORM AND SANITARY PIPE INSTALLATION. CONTRACTOR TO CONFIRM EXISTING WATERLINE IS DECOMMISSIONED PRIOR TO REMOVAL. DESIGN ASSUMES THAT THE PROPOSED WATERLINE IS GENERALLY INSTALLED PRIOR TO OTHER UTILITIES TO MITIGATE CONFLICTS.
5. WHERE MINIMUM VERTICAL CLEARANCES BETWEEN UTILITIES CANNOT BE MET, CONTRACTOR TO INSTALL CONCRETE PIERS AND/OR REINFORCED CONCRETE CRADLE PER ARLINGTON COUNTY STANDARD DRAWING M-7.0
6. WASHINGTON GAS PROPOSED LINES ARE SHOWN FOR REFERENCE ONLY AND ARE TO BE INSTALLED BY OTHERS. REFERENCE WR #3091840 OR EXCAVATION #EXCV21-01093 FOR DETAILS.
7. WHERE MINIMUM VERTICAL CLEARANCES BETWEEN UTILITIES CANNOT BE MET, CONTRACTOR TO INSTALL CONCRETE PIERS AND/OR REINFORCED CONCRETE CRADLE PER ARLINGTON COUNTY STANDARD DRAWING M-7.0

LEGEND

—	PROP. SERVICE CONNECTION
— 4"W —	PROP. 4" WATER PIPE
— 6"W —	PROP. 6" WATER PIPE
— 8"W —	PROP. 8" WATER PIPE
— 12"W —	PROP. 12" WATER PIPE
●	PROP. VALVE
◆	PROP. FIRE HYDRANT
▼	PROP. REDUCER
⊥	PROP. TEE
⊥	PROP. CROSS
⊥	PROP. 11.25° BEND
⊥	PROP. 22.5° BEND
⊥	PROP. 45° BEND
⊥	PROP. 90° BEND
●	PROP. WATER METER
□	PROP. CAP
⊙ ⊙ ⊙ ⊙ ⊙ ⊙ ⊙ ⊙	FILL & ABANDON UTILITY LINE
· X · X · X · X · X · X · X ·	REMOVE UTILITY LINE
⊗	REMOVE VALVE BOX

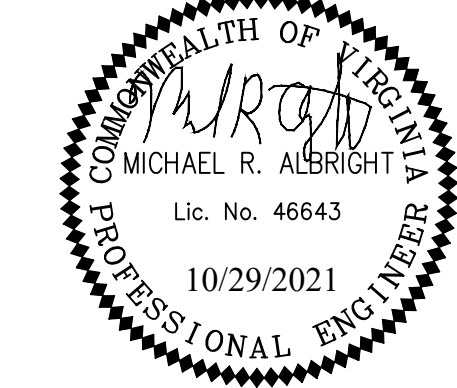


DEPARTMENT OF
ENVIRONMENTAL SERVICES

Facilities & Engineering Division
Engineering Bureau
2100 Clarendon Boulevard, Suite 813
Arlington, VA 22201
Phone: 703.228.3629
Fax: 703.228.3606

Kimley»Horn
Kimley-Horn
and Associates, Inc.
© 2021 KIMLEY-HORN AND ASSOCIATES, INC.
11400 Commerce Park Drive, Suite 400
Reston, Virginia 20190
Phone: 703-774-1500
Fax: 703-774-1500

Seal



Approvals _____ Date _____

Design Team Engineer Supervisor _____

Construction Management Supervisor _____

Water, Sewer, Streets Bureau Chief _____

Transportation Director _____

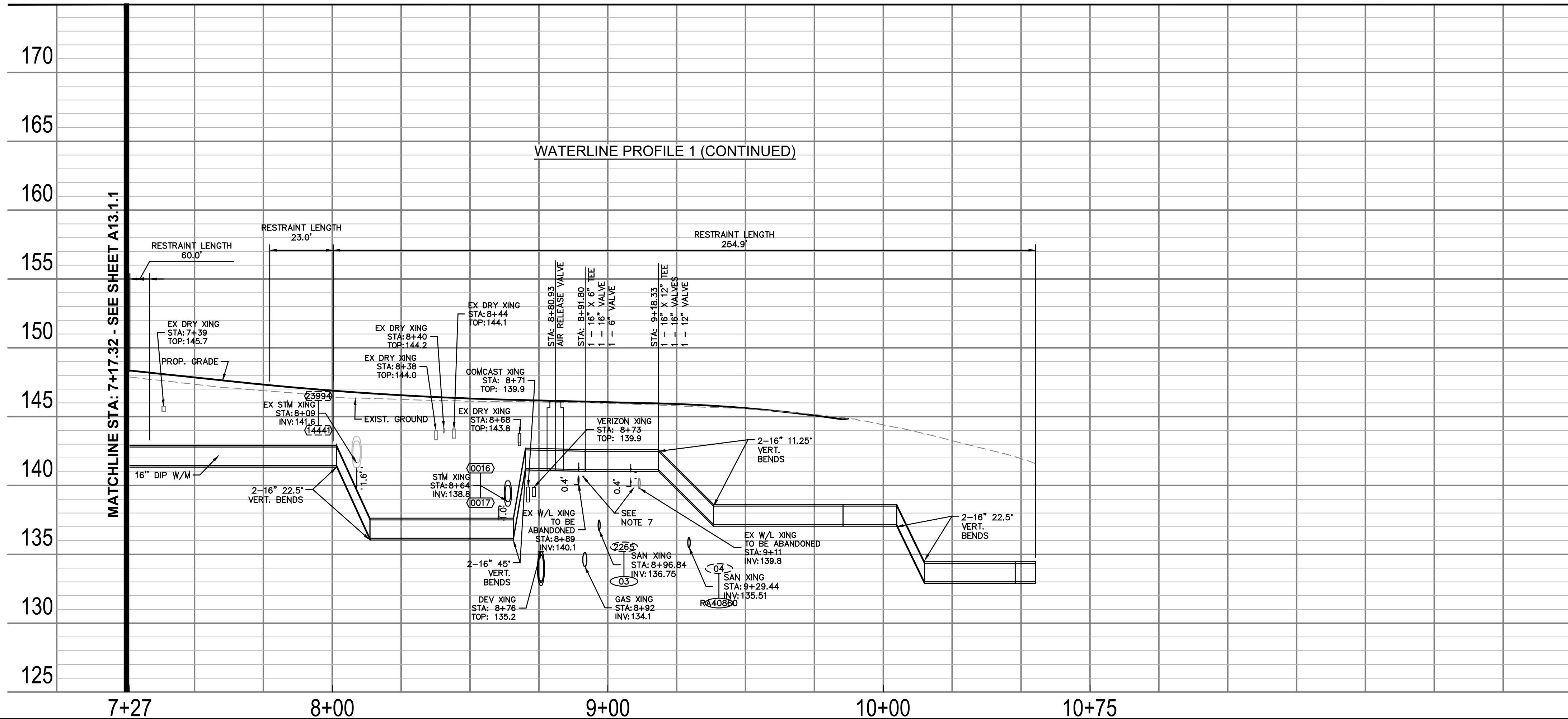
Project Manager _____

Revisions _____ Date _____

Designed: AAA
Drawn: AAA
Checked: MRA
Miss Utility Transmittal #:

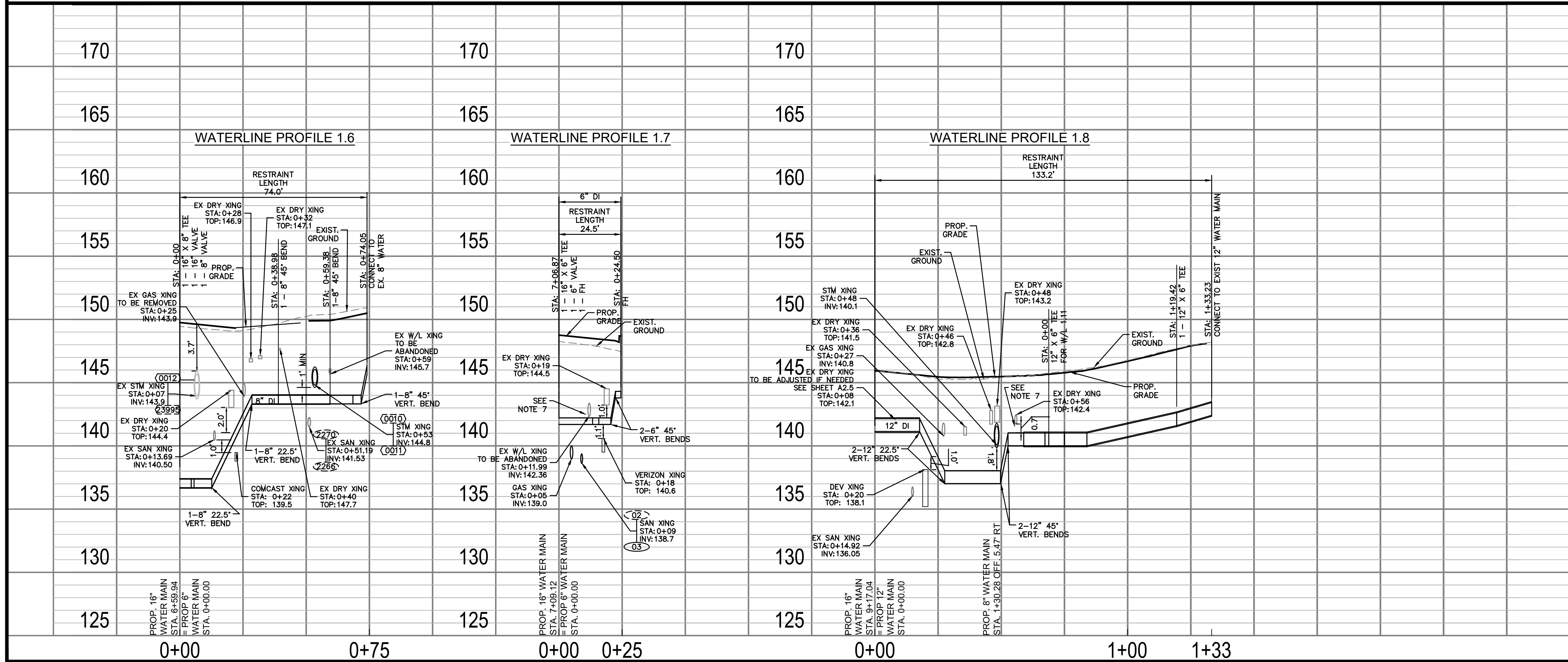
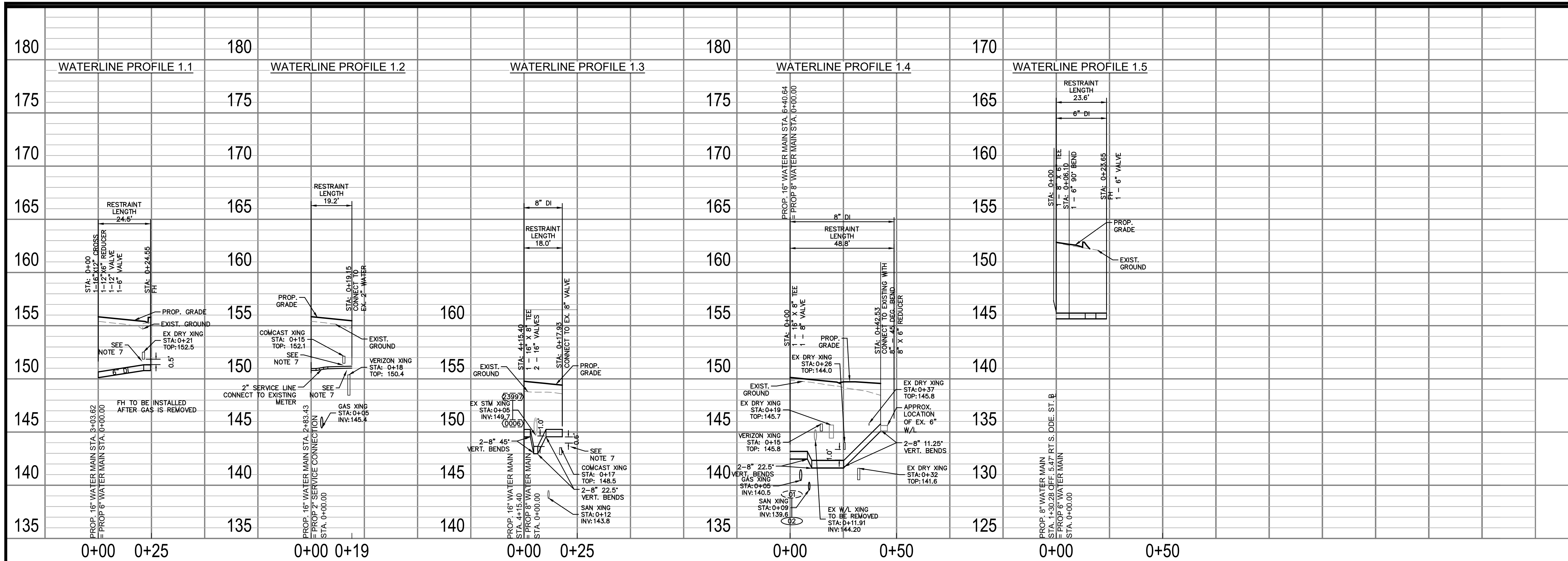
Filename: 010073-A-WATERLINE PLAN AND PRO
Path: \\fs1\design\of\arlington\pkts\sewerwater\project\010073-A-Waterline Plan and Profile.dwg
Plotted: October 29, 2021
Plotted by: Patrick.Husted

ARLINGTON COUNTY, VIRGINIA DEPARTMENT OF ENVIRONMENTAL SERVICES		
WATERLINE PLAN AND PROFILES COLUMBIA PIKE - ROUTE 244 COLUMBIA PIKE - MULTIMODAL STREET IMPROVEMENTS SEGMENT A STA. 62+50 TO STA. 65+50		
SCALE:	HOR. 1" = 25' VERT. 1" = 5'	SHEET: A13.2 of A13.4



DEPARTMENT OF
ENVIRONMENTAL SERVICES

11/23/2021
APPROVAL DATE

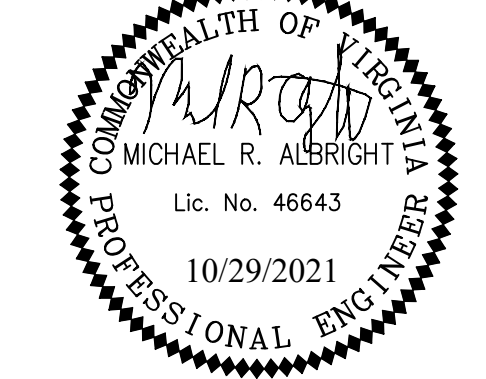


DEPARTMENT OF
ENVIRONMENTAL SERVICES

Facilities & Engineering Division
Engineering Bureau
2100 Clarendon Boulevard, Suite 813
Arlington, VA 22201
Phone: 703.228.3629
Fax: 703.228.3606

Kimley»Horn
Kimley-Horn
and Associates, Inc.
© 2021 KIMLEY-HORN AND ASSOCIATES, INC.
11400 Commerce Park Drive, Suite 400
Reston, Virginia 20190
Phone: 703-874-1500
Fax: 703-874-1500

Seal



Approvals _____ Date _____

Design Team Engineer Supervisor _____

Construction Management Supervisor _____

Water, Sewer, Streets Bureau Chief _____

Transportation Director _____

Project Manager _____

Revisions _____ Date _____

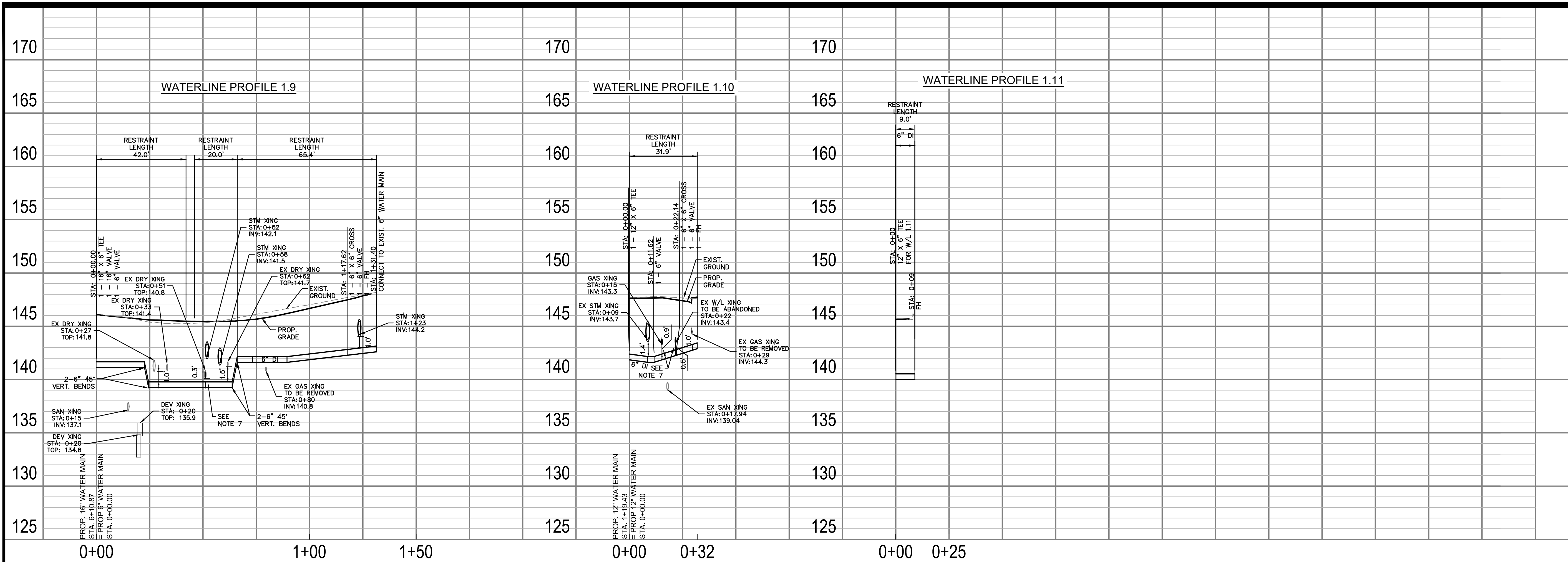
Designed: AAA
Drawn: AAA
Checked: MRA
Miss Utility Transmittal #:

Filename: 010073-A-WATERLINE PLAN AND PRO
Path: Z:\NVA_R00V\1000073 Columbia Pike Multimodal Project\Task
Design\Drawings
Plotted: October 29, 2021
Plotted by: Patrick.Husted

ARLINGTON COUNTY, VIRGINIA
DEPARTMENT OF ENVIRONMENTAL SERVICES

WATERLINE PLAN AND PROFILES
COLUMBIA PIKE - ROUTE 244
COLUMBIA PIKE - MULTIMODAL STREET IMPROVEMENTS
SEGMENT A

SCALE: HOR. 1" = 25' VERT. 1" = 5' SHEET: A13.3 of A13.4





ARLINGTON
VIRGINIA

DEPARTMENT OF
ENVIRONMENTAL SERVICES

Facilities & Engineering Division
Engineering Bureau
2100 Clarendon Boulevard, Suite 813
Arlington, VA 22201
Phone: 703.228.3629
Fax: 703.228.3606

Kimley»Horn
Kimley-Horn
and Associates, Inc.
© 2021 KIMLEY-HORN AND ASSOCIATES, INC.
11400 Commerce Park Drive, Suite 400
Reston, Virginia 20191
Phone: 703-874-1500
Fax: 703-874-1390

Seal


Approvals _____ Date _____

Design Team Engineer Supervisor _____

Construction Management Supervisor _____

Water, Sewer, Streets Bureau Chief _____

Transportation Director _____

Project Manager _____

Revisions	Date

Designed: AAA
Drawn: AAA
Checked: MRA
Miss Utility Transmittal #:

Filename: 010073-A-WATERLINE PLAN AND PRO
Path: Z:\NVA_R00N\110010073_columbia_pike_multimodal_production\110010073.dwg
Plotted: October 29, 2021
Plotted by: Patrick.Husted

ARLINGTON COUNTY, VIRGINIA
DEPARTMENT OF ENVIRONMENTAL SERVICES

WATERLINE PLAN AND PROFILES
COLUMBIA PIKE - ROUTE 244
COLUMBIA PIKE - MULTIMODAL STREET IMPROVEMENTS
SEGMENT A

SCALE: HOR. 1" = 25' VERT. 1" = 5' SHEET: A13.3.1 of A13.4

WATERLINE RESTRAINT LENGTHS											
Station	Fitting Type	Pipe Material	Depth of Bury (ft)	Nominal Size (in)	Bend Angle	Branch Size (in)	Length Along Run (ft)	Reduced Size (in)	Lowside Depth (ft)	Restraint Length	Restraint Length 2
Waterline 1											
0+00	Dead End	Ductile Iron	4	16						115 ft.	
0+15.75	Tee	Ductile Iron	4	16		12	2			75 ft.	
2+46.08	Tee	Ductile Iron	4	16		12	2			75 ft.	
2+97.82	Tee	Ductile Iron	4	16		12	2			75 ft.	
4+01.89	Tee	Ductile Iron	4	16		6	2			42 ft.	
4+57.61	Vertical Offset	Ductile Iron	4	16	22.5				6	23 ft.	7 ft.
6+41.93	Tee	Ductile Iron	4	16		8	2			60 ft.	
6+52.64	Vertical Offset	Ductile Iron	4	16	45				11	44 ft.	8 ft.
6+58.44	Tee	Ductile Iron	4	16		8	2			60 ft.	
6+83.16	Vertical Offset	Ductile Iron	4	16	11.25				11	11 ft.	2 ft.
7+06.87	Tee	Ductile Iron	4	16		6	2			42 ft.	
8+00.30	Vertical Offset	Ductile Iron	4	16	22.5				8	21 ft.	5 ft.
8+65.69	Vertical Offset	Ductile Iron	4	16	45				8	44 ft.	10 ft.
8+91.80	Tee	Ductile Iron	4	16		6	2			42 ft.	
9+18.33	Tee	Ductile Iron	4	16		12	2			75 ft.	
9+18.87	Vertical Offset	Ductile Iron	4	16	11.25				7	11 ft.	3 ft.
9+85.57	Horizontal Bend	Ductile Iron	4	16	45					9 ft.	
10+04.80	Vertical Offset	Ductile Iron	4	16	22.5				9	21 ft.	5 ft.
10+48.12	Horizontal Bend	Ductile Iron	4	16	45					9 ft.	
10+55.30	Dead End	Ductile Iron	4	16						104 ft.	
Waterline 1.1											
0+00	Tee	Ductile Iron	4	16		12	2			90 ft.	
0+00	Reducer	Ductile Iron	4	12				6		65 ft.	
0+24.55	Dead End	Ductile Iron	4	6						50 ft.	
Waterline 1.2											
0+19.15	Dead End	Ductile Iron	4	2						30 ft.	
Waterline 1.3											
0+00	Tee	Ductile Iron	4	16		6	2			42 ft.	
0+00	Vertical Offset	Ductile Iron	4	6	11.25				2	5 ft.	1 ft.
0+09.89	Vertical Offset	Ductile Iron	4	6	22.5				2	9 ft.	2 ft.
0+22.53	Horizontal Bend	Ductile Iron	4	6	45					8 ft.	
0+31.95	Tee	Ductile Iron	4	6		6	6			20 ft.	
Waterline 1.4											
0+00	Tee	Ductile Iron	4	16		8	2			60 ft.	
0+08.14	Vertical Offset	Ductile Iron	4	8	22.5				7	9 ft.	3 ft.
0+25.20	Vertical Offset	Ductile Iron	4	8	11.25				7	18 ft.	5 ft.
0+25.20	Horizontal Bend	Ductile Iron	4	8	45					8 ft.	
0+42.53	Tee	Ductile Iron	4	8				6		27 ft.	
Waterline 1.5											
0+00	Tee	Ductile Iron	4	8		6	2			52 ft.	
0+06	Horizontal Bend	Ductile Iron	4	6						15 ft.	
Waterline 1.6											
0+00	Tee	Ductile Iron	4	16		8	2			60 ft.	
0+13.64	Vertical Offset	Ductile Iron	4	8	22.5				12	10 ft.	2 ft.
0+40.49	Horizontal Bend	Ductile Iron	4	8	45					27 ft.	
0+58.76	Horizontal Bend	Ductile Iron	4	8	45					27 ft.	
0+96.09	Vertical Offset	Ductile Iron	4	8	45				6	24 ft.	7 ft.
Waterline 1.7											
0+00	Tee	Ductile Iron	4	16		6	2			42 ft.	
0+20.56	Vertical Offset	Ductile Iron	4	6	45				6	18 ft.	6 ft.
0+24.50	Dead End	Ductile Iron	4	6						50 ft.	
Waterline 1.8											
0+00	Tee	Ductile Iron	4	16		12	2			75 ft.	
0+15.19	Vertical Offset	Ductile Iron	4	12	22.5				7	17 ft.	5 ft.
0+49.96	Vertical Offset	Ductile Iron	4	12	45				7	34 ft.	9 ft.
0+52.71	Horizontal Bend	Ductile Iron	4	12	45					7 ft.	
0+59.02	Horizontal Bend	Ductile Iron	4	12	45					7 ft.	
1+19.42	Tee	Ductile Iron	4	12		12	2			80 ft.	
1+33.23	Dead End	Ductile Iron	4	12						90 ft.	
Waterline 1.9											
0+00	Tee	Ductile Iron	4	16		6	2			42 ft.	
0+22.55	Vertical Offset	Ductile Iron	4	6	45				2	20 ft.	16 ft.
0+63.66	Vertical Offset	Ductile Iron	4	6	45				2.5	20 ft.	13 ft.
1+17.62	Tee	Ductile Iron	4	6		6	2			37 ft.	
1+31.40	Dead End	Ductile Iron	4	6						50 ft.	
Waterline 1.10											
0+00	Tee	Ductile Iron	4	12		6	2			80 ft.	
0+22.14	Tee	Ductile Iron	4	6		6	2			37 ft.	
0+31.90	Dead End	Ductile Iron	4	6						50 ft.	
Waterline 1.11											
0+00	Tee	Ductile Iron	4	16		6	2			42 ft.	
0+24.50	Dead End	Ductile Iron	4	6						50 ft.	

Project Summary				
Project Name:	Columbia Pike, Segment A			
Building Type:	N/A			
Office	N/A	sq. ft.		
Retail	N/A	sq. ft.		
Residential	N/A	number of units		
Hotel	N/A	number of units		
Other (type:)	N/A	sq. ft.		
Water Main				
New pipe information (excluding Fireline length)				
Length of water main by size	Size:	6	Length:	225'
	Size:	8	Length:	160'
	Size:	12	Length:	165'
	Size:	16	Length:	1045'
New Fire Hydrants	Number:	6		
Blow-offs	Number:	37		
Abandoned pipe and appurtenance information				
Length of water main by size	Size:	6	Length:	255'
	Size:	8	Length:	115'
	Size:	12	Length:	2415'
Fire Hydrants	Number:	5		
Blow-offs	Number:	26		
Water Meters and Connections				
Residential (sfd)	Number:		Size:	
Multi-family	Number:		Size:	
Commercial	Number:		Size:	
Institutional	Number:		Size:	
Industrial	Number:		Size:	
Irrigation	Number:		Size:	
Fireline (Connections)	Number:		Size:	
Other (type:)	Number:		Size:	
Sanitary Sewer Main				
New pipe information				
Length of sanitary sewer by size	8" SDR-			
	Size: 35 PVC		Length:	615'
Number of MHs	Number:	9		
Abandoned pipe information				
Length of sanitary sewer by size	Size: 8" PVC		Length:	16'
	Size: 8" DIP		Length:	1600'
	Size: 12" PVC		Length:	190'
Number of MHs	Number:	10		
Interceptor Information				
Type:	Grease		Sand/oil:	
			Both:	
Location:	Inside:		Outside:	
Size:	Size:			
New Bldg:	Yes		No	
Retrofit:	Yes		No	



DEPARTMENT OF ENVIRONMENTAL SERVICES

Facilities & Engineering Division
Engineering Bureau
2100 Clarendon Boulevard, Suite 813
Arlington, VA 22201
Phone: 703.228.3629
Fax: 703.228.3606

Kimley»Horn
Kimley-Horn
and Associates, Inc.
© 2021 KIMLEY-HORN AND ASSOCIATES, INC.
11400 Commerce Park Drive, Suite 400
Reston, Virginia 20191
Phone: 703-674-1500
Fax: 703-674-1500



Approvals _____ Date _____

Design Team Engineer Supervisor _____

Construction Management Supervisor _____

Water, Sewer, Streets Bureau Chief _____

Transportation Director _____

Project Manager _____

Revisions	Date

Designed: AAA
Drawn: PNH
Checked: MRA
Miss Utility Transmittal #:

Filename: 010073-A-WATERLINE PLAN AND PRO
Path: Z:\NVA_R09\N\11010073_Columbia Pike Multimodal\Production\Task
1 - Final Design of Columbia Pike Segment Segment A\7.5.1 - 75%
Design\Drawings
Plotted: October 29, 2021
Plotted by: Patrick.Husted

ARLINGTON COUNTY, VIRGINIA
DEPARTMENT OF ENVIRONMENTAL SERVICES

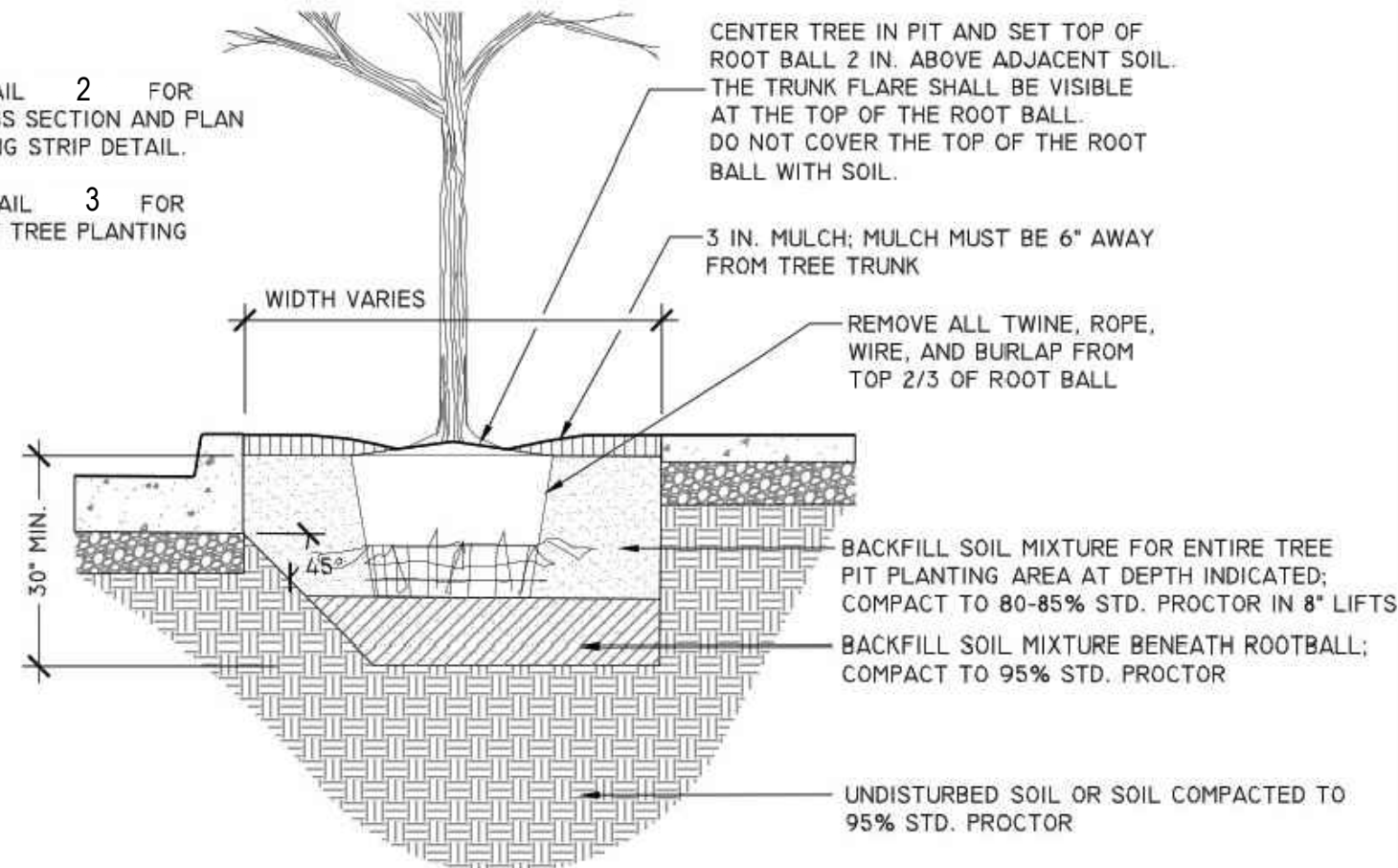
WATERLINE RESTRAINT LENGTHS AND PROJECT SUMMARY
COLUMBIA PIKE - ROUTE 244
COLUMBIA PIKE - MULTIMODAL STREET IMPROVEMENTS
SEGMENT A
S. OAK ST. TO S. ORME ST.

SCALE: HOR. 1" = 25' VERT. 1" = 5' SHEET: A13.4 of A13.4

THIS DETAIL SUPERSEDES ALL OTHER TREE STRIP PLANTING DETAILS IN ARLINGTON COUNTY.

NOTES

1. REFER TO DETAIL 2 FOR ADDITIONAL CROSS SECTION AND PLAN OF TREE PLANTING STRIP DETAIL.
2. REFER TO DETAIL 3 FOR GENERAL STREET TREE PLANTING NOTES.



1 TREE PLANTING STRIP (1 OF 2)
1/2" = 1'-0"

NOTES

1. TREE GRATES MAY ONLY BE USED UPON APPROVAL OF ARLINGTON COUNTY URBAN FORESTER.
2. REFER TO DETAIL 02930.5 FOR GENERAL STREET TREE PLANTING NOTES.
3. INSTALL RAILING, RAISED CURB, OR BORDER PER APPROVED PLANS.

STREET TREE, REFER TO PLANTING DETAIL (SHEET 2 OF 2, DETAIL 02930.3B)

ADJACENT CURB PER ARLINGTON COUNTY STANDARDS

HEADER COURSE OF PAVERS CONTINUOUS THROUGH TREE PIT PER ARLINGTON COUNTY STANDARDS AND SECTOR PLAN REQUIREMENTS; SEE INSET FOR VARIATION WITHOUT HEADER COURSE

#57 STONE SLOPED TO DRAIN PIPE AT 2" PER FOOT. LINE SIDES OF EXCAVATION WITH WATER FACING

4" PERFORATED HDPE SMOOTH WALL DRAIN PIPE CONNECTED TO STORM DRAIN SYSTEM OR DRAIN PAVES ARLINGTON COUNTY STANDARDS. PIPE MAY BE LOCATED AT SIDES OR MIDDLE OF PIT PER SITE CONDITIONS

NOTE: SEE DETAIL 1 SHEET A15.7 FOR STREET LIGHT CONDUIT AND PERFORATED PIPE LAYOUT

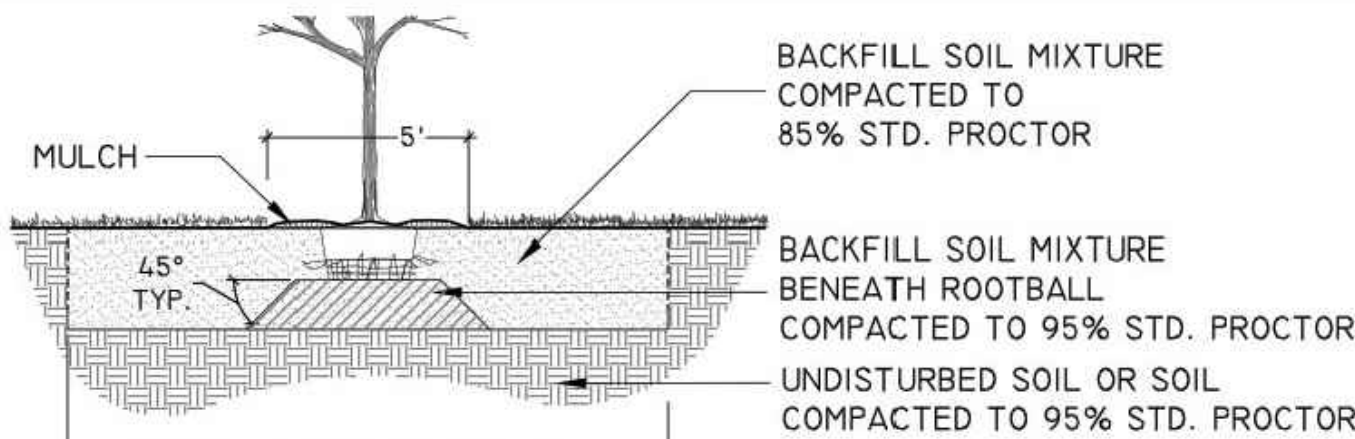
4 STREET TREE PLANTING PIT (1 OF 2)
1/2" = 1'-0"

NOTES

1. AT PLANTING PRUNE ONLY CROSSING LIMBS, BROKEN OR DEAD BRANCHES, AND ANY BRANCHES THAT POSE A HAZARD TO PEDESTRIANS PER ANSI STANDARD A300. DO NOT PRUNE INTO OLD WOOD ON EVERGREENS.
2. CONTRACTOR SHALL MAXIMIZE EXCAVATED AREA FOR TREE PIT WITHOUT ADVERSELY IMPACTING ADJACENT SITE FEATURES.
3. UNLESS OTHERWISE DIRECTED BY THE ARLINGTON COUNTY URBAN FORESTER, BACKFILL SOIL MIXTURE WILL BE 3/4 EXISTING SOIL, CLEANED OF DEBRIS (GRAVEL, ROCKS, STICKS, TRASH, ETC.) AND MIXED WITH 1/4 ORGANIC MATERIAL (COMPOSTED BARK, LEAF MOLD, OR OTHER PLANT DEBRIS PROCESSED TO A POINT OF DECAY AND APPROVED BY THE URBAN FORESTER; PEAT MOSS SHALL NOT BE USED).
4. CONTRACTOR SHALL LEGALLY REMOVE EXCESS SOIL & DEBRIS FROM SITE.
5. TREES PLANTED WITHOUT THE TRUNK FLARE VISIBLE WILL BE REJECTED.
6. TREES MAY ONLY BE STAKED IF REQUIRED BY THE COUNTY URBAN FORESTER. REFER TO STAKING DETAILS.



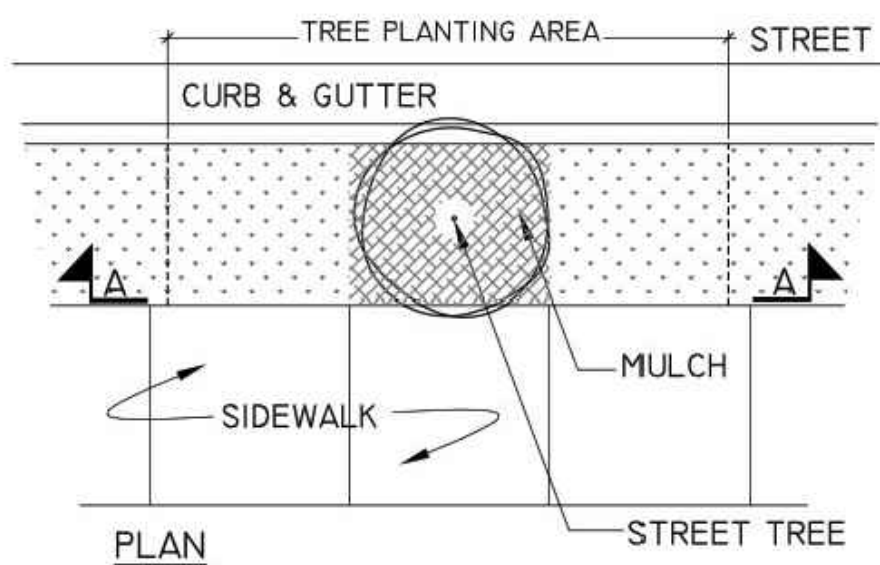
7 TREE PLANTING ON SLOPE
1/2" = 1'-0"



A CROSS SECTION

NOTES

1. REFER TO DETAIL 1 FOR TREE STRIP PLANTING AREA INFORMATION.
2. REFER TO DETAIL 3 FOR GENERAL TREE PLANTING NOTES.



2 TREE PLANTING STRIP (2 OF 2)
NTS

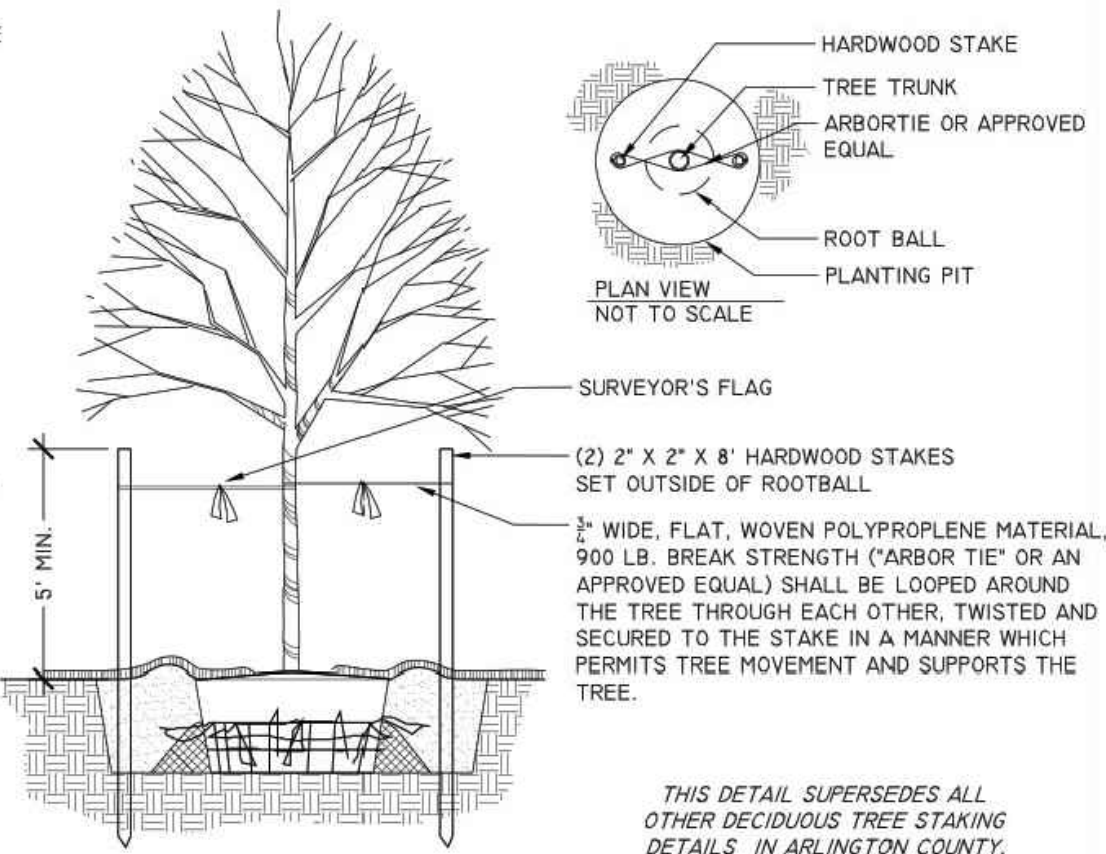
NOTES

1. REFER TO STREET TREE PIT DETAIL 4 FOR PIT CONSTRUCTION AND INFORMATION ON ADJACENT PAVEMENTS, CURB, AND DRAINAGE.
2. REFER TO DETAIL 3 FOR GENERAL TREE PLANTING NOTES.

THIS DETAIL SUPERSEDES ALL OTHER STREET TREE PLANTING DETAILS IN ARLINGTON COUNTY.

5 STREET TREE PLANTING PIT (2 OF 2)
1/2" = 1'-0"

- STAKING AND GUYING MAY ONLY BE IMPLEMENTED WHERE SITE CONDITIONS WARRANT THEIR USE. PLANTED TREES WILL BE ASSESSED INDIVIDUALLY BY PROJECT OFFICER. STAKING AND GUYING WILL BE INSTALLED ONLY IF REQUIRED BY PROJECT OFFICER. CONDITIONS WHERE STAKING AND GUYING MAY BE NECESSARY TO ENSURE STABILITY INCLUDE: WINDY LOCATIONS, STEEP SLOPES, OR WHERE VANDALISM MAY BE A CONCERN.
2. STAKES OR GUYS WILL BE INSTALLED USING ACCEPTED ARBORICULTURE PRACTICES. TREES SHALL STAND PLUMB AFTER STAKING.
 3. INSTALLATION WILL INCLUDE THE REMOVAL OF ALL STAKING AND GUYING MATERIAL ONE YEAR AFTER INSTALLATION. ANY HOLES LEFT BY REMOVING STAKING SHALL BE FILLED WITH APPROVED TOPSOIL/BACKFILL MIXTURE.
 4. REFER TO DETAILS FOR TREE PLANTING INFORMATION.



THIS DETAIL SUPERSEDES ALL OTHER DECIDUOUS TREE STAKING DETAILS IN ARLINGTON COUNTY.

8 DECIDUOUS TREE STAKING
NTS

NOTES

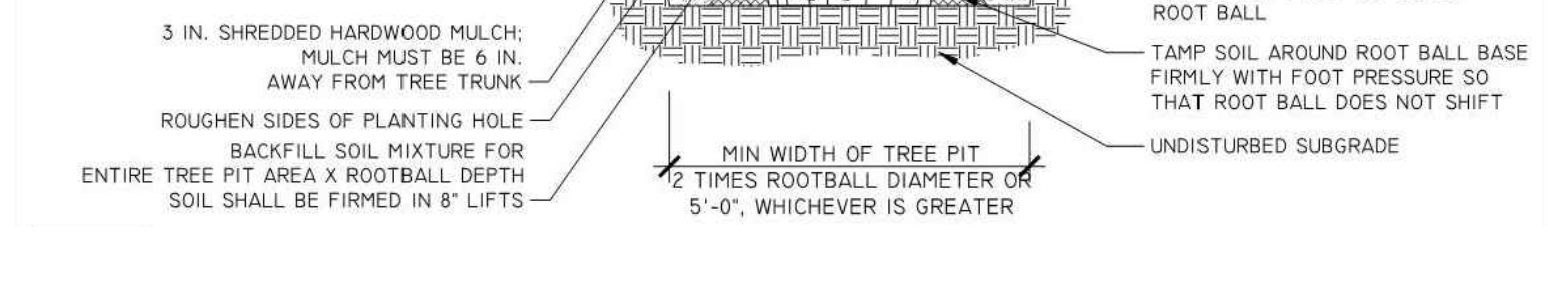
1. NOTIFY THE DRR URBAN FORESTER AT LEAST 72 HOURS IN ADVANCE OF THE SCHEDULED INSTALLATION OF TREE PITS AND PLANTING OF ANY STREET TREES FOR INSPECTION.
2. A PERMIT IS REQUIRED WHEN TREES ARE PLANTED IN PUBLIC RIGHT-OF-WAY OR IN A PUBLIC EASEMENT. THE DEPARTMENT OF ENVIRONMENTAL SERVICES SHALL ISSUE THE PERMIT ACCORDING TO THE PROVISIONS OF THE CURRENT ARLINGTON COUNTY ADMINISTRATIVE REGULATION 4.3.
3. TREE SPECIES SHALL BE SELECTED FROM THE "ARLINGTON COUNTY STREET TREE LIST" OR PER SECTOR PLAN REQUIREMENTS.
4. TREES SHALL BE NURSERY GROWN SPECIMENS THAT MEET THE LATEST EDITION OF THE AMERICAN STANDARDS FOR NURSERY STOCK (ANSI Z60). BALLED AND BURLAPPED TREES SHALL BE SECURELY HELD IN PLACE BY UNTREATED BURLAP AND STOUT ROPE (NYLON ROPE IS NOT ACCEPTABLE). LOOSE, BROKEN OR MANUFACTURED BALLS ARE UNACCEPTABLE.
5. CALL MISS UTILITY AT (800) 552-7001 FOR UTILITY LOCATIONS PRIOR TO EXCAVATION.
6. AT TIME OF PLANTING PRUNE ONLY CROSSING LIMBS, BROKEN OR DEAD BRANCHES, AND ANY BRANCHES THAT POSE A HAZARD TO PEDESTRIANS. DO NOT PRUNE INTO OLD WOOD ON EVERGREENS.
7. TREE PIT AND TREE STRIP PLANTING AREA DIMENSIONS: SEE PLAN.
8. SPACE TREES 25'-30' APART OR PER SECTOR PLAN REQUIREMENTS OR SITE CONDITIONS.
9. SITE CHARACTERISTICS, SUCH AS OVERHEAD POWER LINES, EXISTING VEGETATION, AND INFRASTRUCTURE ITEMS SUCH AS CURBS, SIDEWALKS AND UTILITIES SHALL BE CONSIDERED. TREES THAT GROW TALLER THAN 25 FEET SHOULD NOT BE PLANTED DIRECTLY UNDER POWER LINES. WHEN POSSIBLE THE TREE LEADER SHALL BE OFFSET FROM POWER LINES.

10. BACKFILL SOIL MIXTURE SHALL BE 3/4 EXISTING SOIL, CLEANED OF DEBRIS (GRAVEL, ROCKS, STICKS, TRASH, ETC.) AND MIXED WITH 1/4 ORGANIC MATERIAL (COMPOSTED BARK, LEAF MOLD, OR OTHER PLANT DEBRIS PROCESSED TO A POINT OF DECAY AND APPROVED BY THE COUNTY URBAN FORESTER. PEAT MOSS MAY NOT BE USED).
11. IF THE QUANTITY OF ACCEPTABLE EXISTING SOIL IS INSUFFICIENT FOR THE PLANTING REQUIREMENTS, THE CONTRACTOR MAY USE TOPSOIL. SOIL TEST REPORT RESULTS FOR THE TOPSOIL WILL BE MADE AVAILABLE TO THE COUNTY URBAN FORESTER UPON REQUEST. CONTRACTOR SHALL SUBMIT TOPSOIL FOR APPROVAL TO COUNTY URBAN FORESTER THAT MEETS THE FOLLOWING SPECIFICATIONS:
 - (A.) TOPSOIL CONSISTS OF A SANDY LOAM WITH UNIFORM COMPOSITION AND IS FREE OF STONES, LUMPS, PLANTS, ROOTS, AND OTHER DEBRIS OVER 1/2" IN LENGTH.
 - (B.) TOPSOIL HAS A PH RANGE OF 5.5 TO 6.5 AND A MINIMUM CONTENT OF 1.0% ORGANIC MATTER.
 - (C.) TOPSOIL DOES NOT CONTAIN TOXIC SUBSTANCES HARMFUL TO PLANT GROWTH. SOLUBLE SALT LEVEL SHALL NOT EXCEED 3 MILLIGRAMS PER CENTIMETER.
12. TREES PLANTED WITHOUT THE TRUNK FLARE VISIBLE WILL BE REJECTED.
13. TREES MAY ONLY BE STAKED IF REQUIRED BY THE COUNTY URBAN FORESTER. REFER TO ARLINGTON COUNTY STANDARD STAKING DETAILS.
14. MULCH SHALL BE CLEAN, SCREENED, DOUBLE-HAMMERED HARDWOOD BARK MULCH, UNIFORM IN SIZE AND FREE OF STONES, CLODS, NON-ORGANIC DEBRIS AND OTHER FOREIGN MATERIAL.
15. ALL PLANTS SHALL BE WATERED TWICE: ONCE AT INSTALLATION AND AGAIN WITHIN 48-HOURS OF INSTALLATION. EACH WATERING WILL CONSIST OF 20 GALLONS PER TREE.
16. CONTRACTOR SHALL LEGALLY REMOVE EXCESS SOIL & DEBRIS FROM SITE.

3 GENERAL NOTES FOR STREET TREE PLANTINGS
NTS

NOTES

1. AT PLANTING PRUNE ONLY CROSSING LIMBS, BROKEN OR DEAD BRANCHES, AND ANY BRANCHES THAT POSE A HAZARD TO PEDESTRIANS PER ANSI STANDARD A300. DO NOT PRUNE INTO OLD WOOD ON EVERGREENS.
2. CONTRACTOR SHALL MAXIMIZE EXCAVATED AREA FOR TREE PIT WITHOUT ADVERSELY IMPACTING ADJACENT SITE FEATURES.
3. UNLESS OTHERWISE DIRECTED BY ARLINGTON COUNTY URBAN FORESTER, BACKFILL SOIL MIXTURE WILL BE 3/4 EXISTING SOIL, CLEANED OF DEBRIS (GRAVEL, ROCKS, STICKS, TRASH, ETC.) AND MIXED WITH 1/4 ORGANIC MATERIAL (COMPOSTED BARK, LEAF MOLD, OR OTHER PLANT DEBRIS PROCESSED TO A POINT OF DECAY AND APPROVED BY THE URBAN FORESTER; PEAT MOSS SHALL NOT BE USED).
4. CONTRACTOR SHALL LEGALLY REMOVE EXCESS SOIL & DEBRIS FROM SITE.
5. TREES PLANTED WITHOUT THE TRUNK FLARE VISIBLE WILL BE REJECTED.
6. TREES MAY ONLY BE STAKED IF REQUIRED BY THE COUNTY URBAN FORESTER. REFER TO STAKING DETAILS.



THIS DETAIL SUPERSEDES ALL OTHER TREE PLANTING DETAILS IN ARLINGTON COUNTY.

CENTER TREE IN PIT AND SET TOP OF ROOT BALL 2 IN. ABOVE ADJACENT GRADE. THE TRUNK FLARE SHALL BE VISIBLE AT THE TOP OF THE ROOT BALL. DO NOT COVER THE TOP OF THE ROOT BALL WITH SOIL.

4 IN. HIGH EARTH SAUCER BEYOND EDGE OF ROOT BALL

REMOVE ALL TWINE, ROPE, WIRE, AND BURLAP FROM TOP 2/3 OF ROOT BALL

TAMP SOIL AROUND ROOT BALL BASE FIRMLY WITH FOOT PRESSURE SO THAT ROOT BALL DOES NOT SHIFT

UNDISTURBED SUBGRADE

6 TREE PLANTING DETAIL
NTS

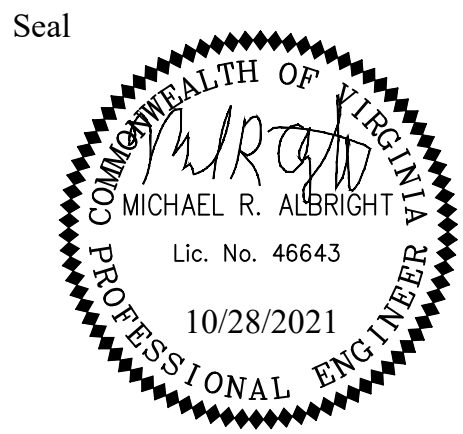
ARLINGTON COUNTY, VIRGINIA DEPARTMENT OF ENVIRONMENTAL SERVICES		
LANDSCAPE DETAILS COLUMBIA PIKE - ROUTE 244 COLUMBIA PIKE - MULTIMODAL STREET IMPROVEMENTS SEGMENT A S. OAK ST. TO S. ORME ST.		
SCALE:	HOR. N/A VERT. N/A	SHEET: A14.2 of A14.11



DEPARTMENT OF
ENVIRONMENTAL SERVICES

Facilities & Engineering Division
Engineering Bureau
2100 Clarendon Boulevard, Suite 813
Arlington, VA 22201
Phone: 703.228.3629
Fax: 703.228.3606

Kimley»Horn
Kimley-Horn
and Associates, Inc.
© 2021 KIMLEY-HORN AND ASSOCIATES, INC.
11400 Commerce Park Drive, Suite 400
Reston, Virginia 20191
Phone: 703-674-1500
Fax: 703-674-1500



Approvals Date

Design Team Engineer Supervisor

Construction Management Supervisor

Water, Sewer, Streets Bureau Chief

Transportation Director

Project Manager

Revisions	Date

Designed: KWA
Drawn: WDW
Checked: MRA
Miss Utility Transmittal #:

Filename: 010073-A-LAND-DTL.dwg
Path: C:\Users\paul\OneDrive\Documents\010073-A-LAND-DTL.dwg
Plotted: October 28, 2021
Plotted by: Patrick.Husted