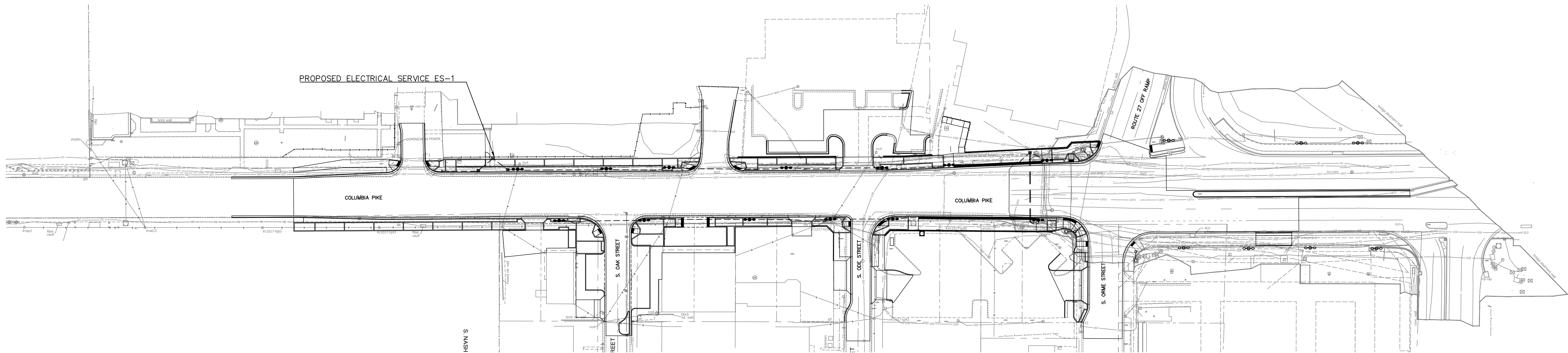


SERVICE POLE #	SHEET NO.	SERVICE LOCATION	CIRCUIT BREAKER SIZE	WIRE SIZE		CARLYLE LED LIGHT POLES SERVED
			PROPOSED	EXISTING	PROPOSED	
ES-1	A15.6	S. Nash St.	(1) 200 amp	-	3#6	LP01, LP02, LP03, LP04, LP05, LP06, LP07, LP08, LP09, LP10, LP11, LP12, LP13

THE COST OF CONNECTING TO EXISTING CIRCUIT BREAKERS AT THE SPECIFIED ELECTRIC SERVICE SHALL NOT BE PAID FOR DIRECTLY BUT SHALL BE CONSIDERED SUBSIDIARY TO THE INSTALLATION OF LIGHT POLES.



VOLTAGE DROP CALCULATIONS

PROJECT ELECTRICAL DESIGN DATA

SERVICE VOLTAGE:	120	VOLT
SYSTEM PHASES:	1	
TYP. SYSTEM WIRING:	3-WIRE W/ GND	
CONDUIT TYPE:	RMC CONDUIT	
POWER FACTOR:	0.95	%
MAXIMUM VOLTAGE DROP:	5	%

SERVICE POINT:

SERVICE

FEEDER CONDUCTORS

CIRCUIT: CKT A

REF #	FROM	TO	RUN#	DISTANCE (FT)	CONDUCTOR PROPERTIES			LINK R (OHM)	LINK X (OHM)	THIS NODE		BRANCH FROM NODE		LUMINAIRE SUMMARY							
					CONDUCTOR R SIZE (AWG)	R/1000	X/1000			LUMINAIRE QUANTITY	LUMINAIRE WATTAGE	BRANCH	LUMINAIRE QUANTITY	VA	LUMINAIRE QUANTITY	VA	CURRENT (A)	NODE VOLTAGE DROP (V)	TOTAL VOLTAGE DROP (V)	NODE VOLTAGE	% VOLTAGE DROP
BRANCH A																					
1	ES 1	JB01		10	6	0.491	0.064	0.010	0.001	2	68.5				12	827.754	6.90	0.07	0.07	119.59	0.06%
2	JB01	LP07		25	6	0.491	0.064	0.025	0.003	2	68.5				12	827.754	6.90	0.17	0.24	119.62	0.20%
3	LP07	LP05		175	6	0.491	0.064	0.172	0.022	2	68.5				12	827.754	6.90	1.19	1.43	118.23	1.19%
4	LP05	LP03		196	6	0.491	0.064	0.192	0.026	2	68.5				10	686.795	5.75	1.11	2.54	117.12	2.12%
5	LP03	JB02		150	6	0.491	0.064	0.147	0.019	2	68.5				10	686.795	5.75	0.85	3.40	116.26	2.85%
6	JB02	LP01		20	6	0.491	0.064	0.020	0.003	2	68.5				8	551.835	4.60	0.09	3.49	116.17	2.91%
7	LP01	LP12		208	6	0.491	0.064	0.204	0.027	2	68.5				8	413.877	3.45	0.71	4.20	115.46	3.50%
8	LP12	LP10		145	6	0.491	0.064	0.142	0.019	2	68.5				4	275.918	2.30	0.33	4.52	115.13	3.77%
9	LP10	LP08		193	6	0.491	0.064	0.190	0.026	2	68.5				2	137.869	1.15	0.22	4.74	114.92	3.96%
					6	0.122	0.048	0.000	0.000	0	0.00				0	0	0.00	0.00	4.74	114.92	3.96%
					6	0.122	0.048	0.000	0.000	0	0.00				0	0	0.00	0.00	0.00	119.58	0.00%

CIRCUIT CKT A VOLTAGE DROP SUMMARY:

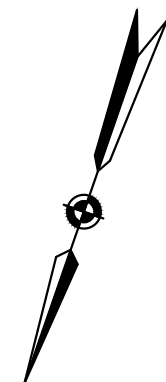
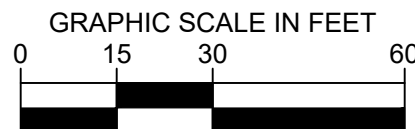
BRANCH A	MAX. VOLTAGE DROP	4.74	3.96%	ACCEPTABLE
----------	-------------------	------	-------	------------

CIRCUIT: CKT B

REF #	FROM	TO	RUN#	DISTANCE (FT)	CONDUCTOR PROPERTIES			LINK R (OHM)	LINK X (OHM)	THIS NODE		BRANCH FROM NODE		LUMINAIRE SUMMARY							
					CONDUCTOR R SIZE (AWG)	R/1000	X/1000			LUMINAIRE QUANTITY	LUMINAIRE WATTAGE	BRANCH	LUMINAIRE QUANTITY	VA	LUMINAIRE QUANTITY	VA	CURRENT (A)	NODE VOLTAGE DROP (V)	TOTAL VOLTAGE DROP (V)	NODE VOLTAGE	% VOLTAGE DROP
BRANCH A																					
1	ES1	JB01		10	6	0.491	0.064	0.010	0.001	2	68.5				14	965.713	8.05	0.08	0.08	119.58	0.07%
2	JB01	LP08		115	6	0.491	0.064	0.113	0.015	2	68.5				14	965.713	8.05	0.91	0.99	118.67	0.83%
3	LP08	LP04		182	6	0.491	0.064	0.179	0.023	2	68.5				12	827.754	6.90	1.24	2.23	117.43	1.86%
4	LP04	JB02		164	6	0.491	0.064	0.161	0.021	2	68.5				10	686.795	5.75	0.83	3.17	116.49	2.64%
5	LP02	JB02		83	6	0.491	0.064	0.082	0.011	2	68.5				8	551.835	4.60	0.38	3.54	116.12	2.95%
6	JB02	LP13		63	6	0.491	0.064	0.062	0.008	2	68.5				6	413.877	3.45	0.21	3.76	115.90	3.13%
7	LP13	LP11		213	6	0.491	0.064	0.209	0.027	2	68.5				4	275.918	2.30	0.48	4.24	115.42	3.53%
8	LP11	LP09		187	6	0.491	0.064	0.184	0.024	2	68.5				2	137.869	1.15	0.21	4.45	115.21	3.71%
					6	0.122	0.048	0.000	0.000	0	0.00				0	0	0.00	0.00	4.45	115.21	3.71%

CIRCUIT CKT B VOLTAGE DROP SUMMARY:

BRANCH A	MAX. VOLTAGE DROP	4.45	3.71%	ACCEPTABLE
----------	-------------------	------	-------	------------



ARLINGTON COUNTY, VIRGINIA DEPARTMENT OF ENVIRONMENTAL SERVICES	
LIGHTING SUMMARIES COLUMBIA PIKE - ROUTE 244 COLUMBIA PIKE - MULTIMODAL STREET IMPROVEMENTS SEGMENT A	
SCALE: HOR. N/A VERT. N/A	SHEET: A15.2 of A15.7



DEPARTMENT OF  
ENVIRONMENTAL SERVICES

Facilities & Engineering Division  
Engineering Bureau  
2100 Clarendon Boulevard, Suite 813  
Arlington, VA 22201  
Phone: 703.228.3629  
Fax: 703.228.3606

**Kimley»Horn**

Kimley-Horn  
and Associates, Inc.

© 2021 KIMLEY-HORN AND ASSOCIATES, INC.  
11400 Commerce Park Drive, Suite 400  
Reston, Virginia 20190  
Phone: 703-874-1500  
Fax: 703-874-1500

Seal



Approvals

Date

Design Team Engineer Supervisor

Construction Management Supervisor

Water, Sewer, Streets Bureau Chief

Transportation Director

Project Manager

Revisions

Date

Designed: DL  
Drawn: BAA  
Checked: MRA  
Miss Utility Transmittal #:

Filename: 010073-SEG 0-2.dwg  
Path: C:\Users\pba\OneDrive\Documents\010073-SEG 0-2.dwg  
Plotted: October 28, 2021  
Plotted by: Patrick.Husted



DEPARTMENT OF  
ENVIRONMENTAL SERVICES

11/23/2021

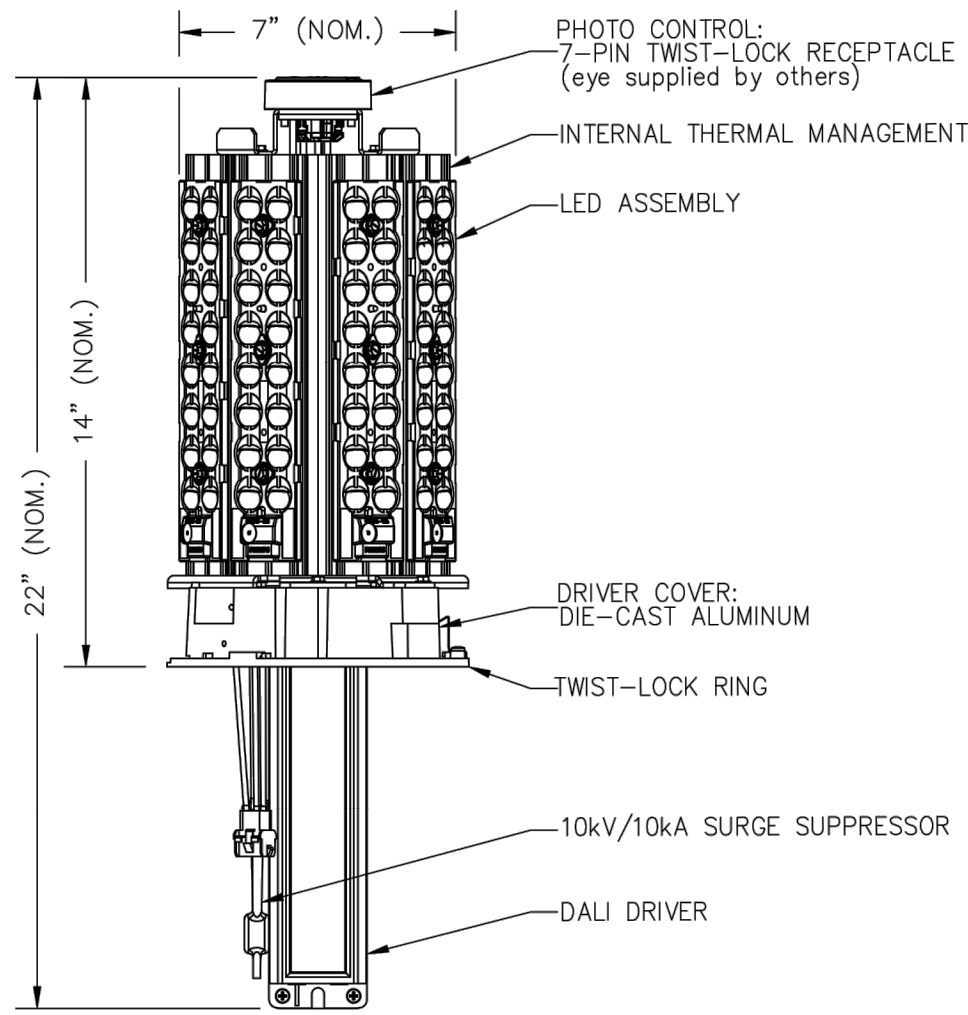
APPROVAL DATE



3. ALL CONSTRUCTION WORK FOR THIS PROJECT SHALL CONFORM TO THE CURRENT "ARLINGTON COUNTY, DEPARTMENT OF ENVIRONMENTAL SERVICES (DES), CONSTRUCTION STANDARDS AND SPECIFICATIONS," "ARLINGTON COUNTY, DEPARTMENT OF ENVIRONMENTAL SERVICES TRAFFIC SIGNAL & STREETLIGHT SPECIFICATIONS" AND ANY SPECIAL PROVISIONS AND SPECIAL DESIGN AS PROVIDED ON THESE PLANS OR IN THE BID PROPOSAL. COPIES OF THE "CONSTRUCTION STANDARDS AND SPECIFICATIONS" MANUAL CAN BE DOWNLOADED AT NO COST AT: <http://www.building.arlingtonva.us/resources/design-standards-guidelines/>
2. OVERHEAD LINES ARE LOCATED WITHIN THE PROJECT LIMITS. THE CONTRACTOR SHALL MEET THE NATIONAL ELECTRICAL SAFETY CODE (NEC) CLEARANCE REQUIREMENTS. FIELD CHECK CLEARANCES AND LOCATE LIGHT POLES WITH COUNTY'S APPROVAL. ALL ELECTRICAL WORK SHALL BE DONE IN ACCORDANCE WITH THE NATIONAL ELECTRICAL CODE (NEC), UNLESS OTHERWISE SPECIFIED IN THE PLANS.
3. THE CONTRACTOR SHALL BE RESPONSIBLE FOR THE PROPER DISPOSAL OF ALL MATERIALS ACCORDING TO ESTABLISHED ENVIRONMENTAL REQUIREMENTS. THE CONTRACTOR SHALL SALVAGE EXISTING LIGHT POLE ASSEMBLIES, INCLUDING FIXTURES, ARMS, POLES, INCIDENTAL MOUNTING/WIRING EQUIPMENT FOR LIGHT POLES SHOWN AS REMOVED IN THE PLANS AND/OR DIRECTED BY THE PROJECT OFFICER.
4. INSTALL PROPOSED LED RETROFITS IN EACH GLOBE. USE BLACK COLOR ATTACHMENTS, INCLUDING BLACK COLOR DOUBLE ARM BRACKETS ON 16 FEET TALL BLACK COLOR CARLYLE LIGHT POLES. LUMINAIRE MOUNTING HEIGHT IS APPROXIMATELY 18 FEET.
5. THE CONTRACTOR SHALL CONTACT "MISS UTILITY" AT 811 FOR MARKING THE LOCATIONS OF EXISTING UNDERGROUND UTILITIES (i.e., WATER, SEWER, GAS, TELEPHONE, ELECTRIC, CABLE TV) AT LEAST 72 HOURS PRIOR TO ANY EXCAVATION OR CONSTRUCTION. THE CONTRACTOR SHALL IDENTIFY AND PROTECT ALL UTILITIES, INCLUDING ALL OTHER UTILITY LINES FOUND IN THE WORK SITE AREA BELONGING TO OWNERS THAT ARE NOT MEMBERS OF "MISS UTILITY."
6. THE LOCATION OF ALL EXISTING UTILITIES SHOWN ON THESE PLANS ARE FROM BEST AVAILABLE RECORDS AND MUST BE CONSIDERED TO BE APPROXIMATE. WHEN CONSTRUCTION ACTIVITY REACHES IN PROXIMITY TO EXISTING UTILITIES, THE TRENCH(ES) SHALL BE OPENED A SUFFICIENT DISTANCE AHEAD OF THE WORK OR TEST PITS SHALL BE MADE TO VERIFY THE EXACT LOCATION AND INVERTS OF THE UTILITY TO ALLOW FOR POSSIBLE CHANGES IN THE LINE OR GRADE. THE CONTRACTOR SHALL BE RESPONSIBLE FOR ANY DAMAGE TO THE EXISTING UTILITIES AND THE RELATED STRUCTURES. ALL EXISTING UTILITY SYSTEMS SHALL BE PROTECTED TO PREVENT DAMAGE DURING THE CONTRACTOR'S OPERATIONS. ANY SYSTEM DAMAGED SHALL BE PROMPTLY REPAIRED AT NO COST TO THE OWNER.
7. ALL CONCRETE ON THIS PROJECT SHALL BE CLASS "A" AIR ENTRAINED CONCRETE UNLESS OTHERWISE NOTED. THE CONTRACTOR SHALL USE A CURING COMPOUND TO TREAT ALL EXPOSED CONCRETE.
8. THE RESTORATION OR REMOVAL COST OF ANY EXISTING PAVEMENT, CURB AND GUTTER, SIDEWALKS, APRONS, LANDSCAPING, ETC. IS TO BE INCLUDED IN THE UNIT PRICE BID FOR "REMOVE EXISTING LIGHT POLE" OR "INSTALL ORNAMENTAL LIGHT POLE." THE CONTRACTOR SHALL REPAIR OR REPLACE ANY ITEM TO REMAIN BUT DAMAGED BY THE CONTRACTOR'S OPERATION AT THE CONTRACTOR'S EXPENSE AND TO THE SATISFACTION OF THE PROJECT OFFICER.
9. ANY SIDEWALKS IMPACTED SHALL BE CONSTRUCTED IN ACCORDANCE WITH DES STANDARD SPECIFICATION SECTION NO. 02611 "CONCRETE WALKS AND CONCRETE DRIVEWAY ENTRANCE" AND CURB AND GUTTER SHALL BE CONSTRUCTED IN ACCORDANCE WITH DES STANDARD SPECIFICATION SECTION NO. 02750 "CURB AND GUTTERS".
10. THE CONTRACTOR SHALL TAKE MEASURES TO PRESERVE THE EXISTING LANDSCAPING. WHEN TRENCHING IN EARTH THE CONTRACTOR SHALL CAREFULLY REMOVE THE EXISTING SOD AND THEN PLACE THE EXISTING SOD INTO PLACE WHEN THE WORK IS COMPLETE. THE CONTRACTOR SHALL PLACE ALL EARTH THAT HAS BEEN DUG UP ON A PLASTIC SHEET TO PROTECT THE EXISTING LANDSCAPE.
11. THE CONTRACTOR SHALL COMPLETELY RESTORE THE TRENCH AT THE END OF EVERY WORKING DAY. THIS RESTORATION INCLUDES BACK-FILLING, COMPACTION, AND PLACING THE SOD. ALL ACTIVITIES RELATED TO TRENCHING SHALL BE INCLUDED IN THE UNIT COST FOR TRENCHING CONDUIT.
12. CONTRACTOR SHALL NOT DISTURB OR REMOVE ANY TRAFFIC CONTROL SIGNS, PARKING METERS OR ANY OTHER TRAFFIC CONTROL DEVICE WITHOUT PRIOR PERMISSION FROM THE PROJECT OFFICER AT 703-228-0652.
13. FOR REMOVING EXISTING LIGHT POLE FOUNDATIONS, EXCAVATE AND REMOVE LIGHT POLE FOUNDATION TO A MINIMUM OF 2 FEET BELOW FINISHED GRADE, FILL THE VOID LEFT BY THE STRUCTURE WITH SAND OR #57 AGGREGATE MATERIAL. IF THE LIGHT POLE IS WITHIN THE LIMITS OF THE SIDEWALK AREA, PLACE PREMOLED EXPANSION JOINT AROUND THE POLE FOR THE FULL DEPTH OF THE CONCRETE. CONCRETE CURB AND GUTTER, AND SIDEWALKS, SHALL BE RESTORED AS REQUIRED TO MATCH EXISTING CONSTRUCTION. REPLACE DAMAGED SECTIONS WITH COMPLETE NEW SECTIONS OR SQUARES; PATCHING OF DAMAGED SECTIONS WILL NOT BE PERMITTED. THE PRICE FOR ABOVE SHALL BE INCLUDED IN THE UNIT PRICE BID FOR "REMOVE EXISTING LIGHT POLE."
14. THE CONTRACTOR SHALL PROVIDE ACCESS THROUGH THE SITE AS DIRECTED BY ARLINGTON COUNTY AT ALL TIMES DURING CONSTRUCTION AND SHALL ENSURE THE SAFETY OF PEDESTRIANS FROM TRAFFIC AND CONSTRUCTION HAZARDS. MAINTENANCE OF TRAFFIC IS SUBSIDIARY TO AND SHALL BE INCLUDED IN THE VARIOUS UNIT BID PRICES FOR THE VARIOUS BID ITEMS OF WORK ON THE PROJECT. THE CONTRACTOR SHALL BE RESPONSIBLE FOR OBTAINING VDOT AND THE COUNTY'S APPROVAL FOR THE MOT PLANS, INCLUDING SIDEWALK AND ROAD CLOSURE PERMITS.
15. AT EXISTING STREET LIGHT DISCONNECT/METER LOCATIONS SHOWN ON THE PLANS, THE CONTRACTOR SHALL BE REQUIRED TO ADD OR MODIFY THE SIZE OF MAIN DISCONNECT OR BRANCH CIRCUIT BREAKERS. ALL SUCH WORK SHALL BE ACCOMPLISHED IN ACCORDANCE WITH DES STANDARDS AND NEC REQUIREMENTS AND IS SUBSIDIARY TO THE INSTALLATION OF THE LIGHT POLES. THE COST OF CONNECTING TO EXISTING CIRCUIT BREAKERS AT THE SPECIFIED ELECTRIC SERVICES SHALL NOT BE PAID FOR DIRECTLY BUT SHALL BE CONSIDERED SUBSIDIARY TO THE INSTALLATION OF LIGHT POLES.
16. AFTER THE STREETLIGHT INSTALLATION IS COMPLETE, COUNTY STAFF WILL TEST/PROGRAM THE RADIO INSIDE THE STREETLIGHT BY COMMUNICATING WITH A HANDHELD DEVICE. CONTRACTOR SHALL BE RESPONSIBLE FOR REPLACING SUCH RADIOS WHICH MANUFACTURER USUALLY SUPPLY UNDER WARRANTY.
17. QUARTZITE BOXES ALONG COLUMBIA PIKE SHALL BE 13"x24" PC1212HA00 (LID) AND PC1212BA12 (BOX). ALL OTHER QUARTZITE BOXES SHALL BE 12"x12" QUARTZITE PC1212HA00 (LID) AND PC1212BA12 (BOX). THE COVERS SHALL BE MARKED "STREET LIGHT." A 5/8"x8" COPPER CLAD GROUNDING ROD SHALL BE INSTALLED IN EACH QUARTZITE BOX.
18. ANY CONSTRUCTION NOISE ACTIVITIES WHICH PRODUCE NOISE LEVELS EXCEEDING ARLINGTON COUNTY'S ESTABLISHED MAXIMUM PERMISSIBLE NOISE LEVELS SHALL BE PERMITTED ONLY DURING THE DAYTIME. ALL FEASIBLE PROCEDURES SHALL BE UNDERTAKEN TO MINIMIZE NOISE GENERATED BY CONSTRUCTION ACTIVITIES. IN NO INSTANCE SHALL NOISE LEVELS ORIGINATING FROM CONSTRUCTION SITES EXCEED NINETY (90) DBA.
19. NO TRAVEL LANES SHALL BE CLOSED MONDAY THROUGH FRIDAY BETWEEN 6:30 AM AND 9:30 AM AND BETWEEN 4:00 PM AND 6:30 PM.
20. MAINTAIN EXISTING CIRCUITS IN WORKING CONDITION WITHIN PROJECT LIMITS AND LIGHT POLES OUTSIDE THE PROJECT LIMITS TO REMAIN. SPLICE CONDUIT AND CONDUCTORS AS NECESSARY, PER NEC STANDARDS TO MAINTAIN CONTINUITY. CHECK VOLTAGE DROP CALCULATIONS BEFORE SPLICING. ALL THESE ITEMS WILL NOT BE PAID FOR DIRECTLY BUT ARE SUBSIDIARY TO THE REMOVAL OF EXISTING LIGHT POLES.

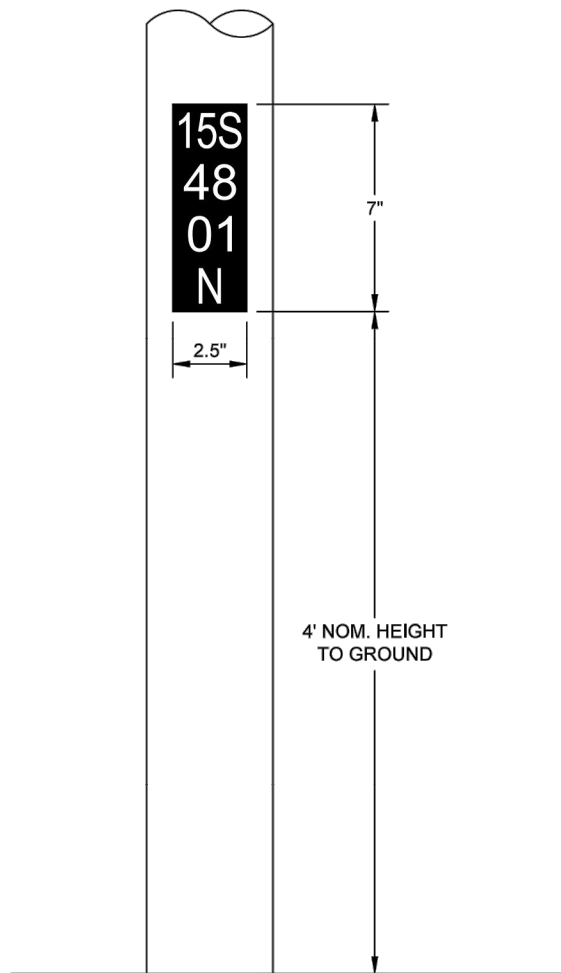
SCALE:	HOR. N/A VERT. N/A	SHEET:	A15.3 of A15.7
--------	--------------------	--------	----------------





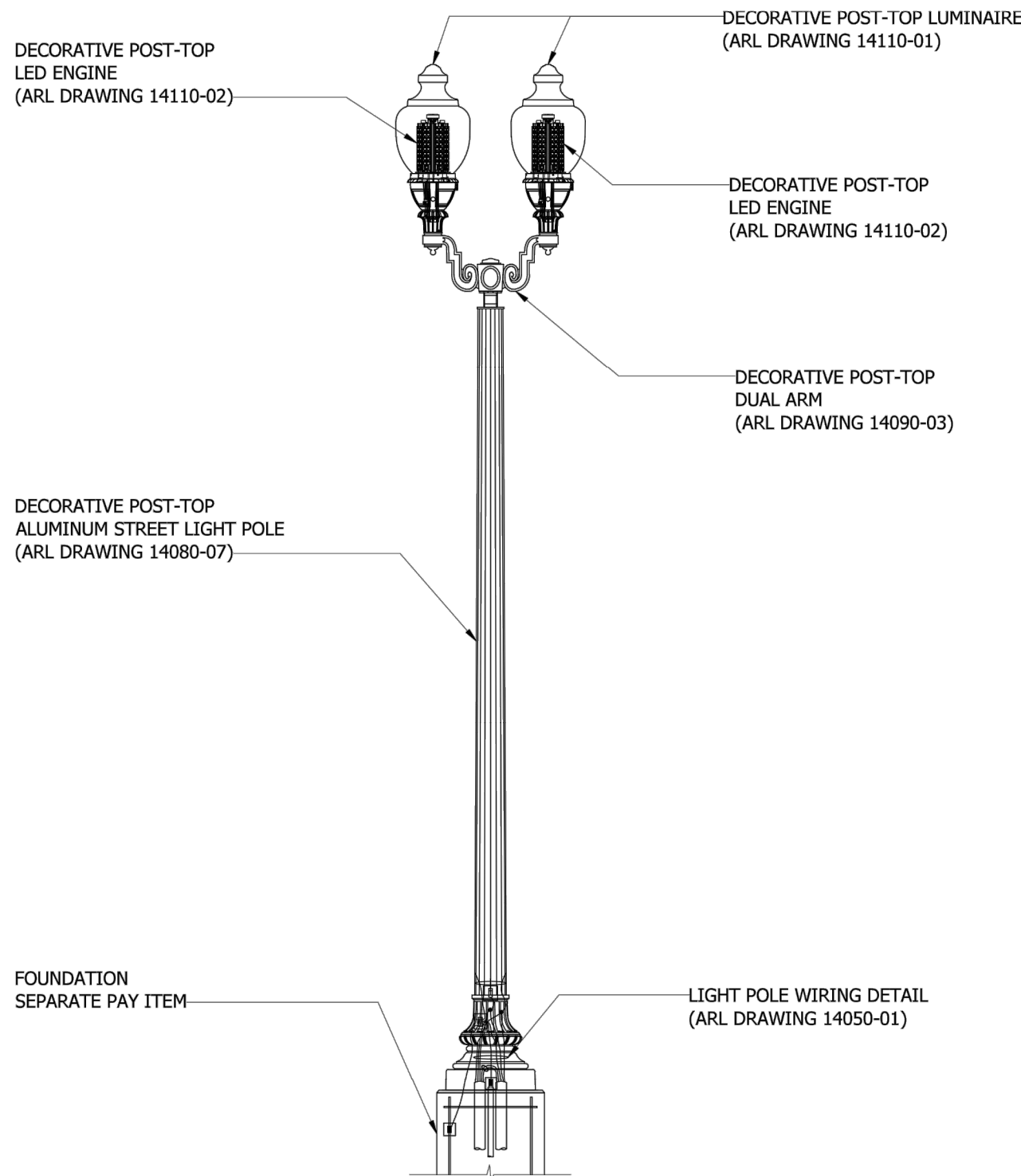
- NOTES:
1. UNIT SHALL BE TESTED FOR VIBRATION AND SHOCK RESISTANCE.
  2. POWER SUPPLY (DRIVER) SHALL OPERATE OVER VOLTAGES RANGING FROM 120-277 VOLTS.
  3. DRIVERS SHALL HAVE VOLTAGE SURGE PROTECTION TO WITHSTAND HIGH REPETITION NOISE TRANSIENTS.
  4. DURING REMOVAL THE CONTRACTOR SHALL MAKE A DETAILED NOTE OF WHICH POLE (INCLUDING THE POLE NUMBER) THAT THE LUMINAIRE WAS REMOVED FROM.

DECORATIVE POST-TOP LED ENGINE		
	REVISION & DATE	
ARLINGTON COUNTY, VIRGINIA DEPARTMENT OF ENVIRONMENTAL SERVICES	DRAWING NO. 14110-02	

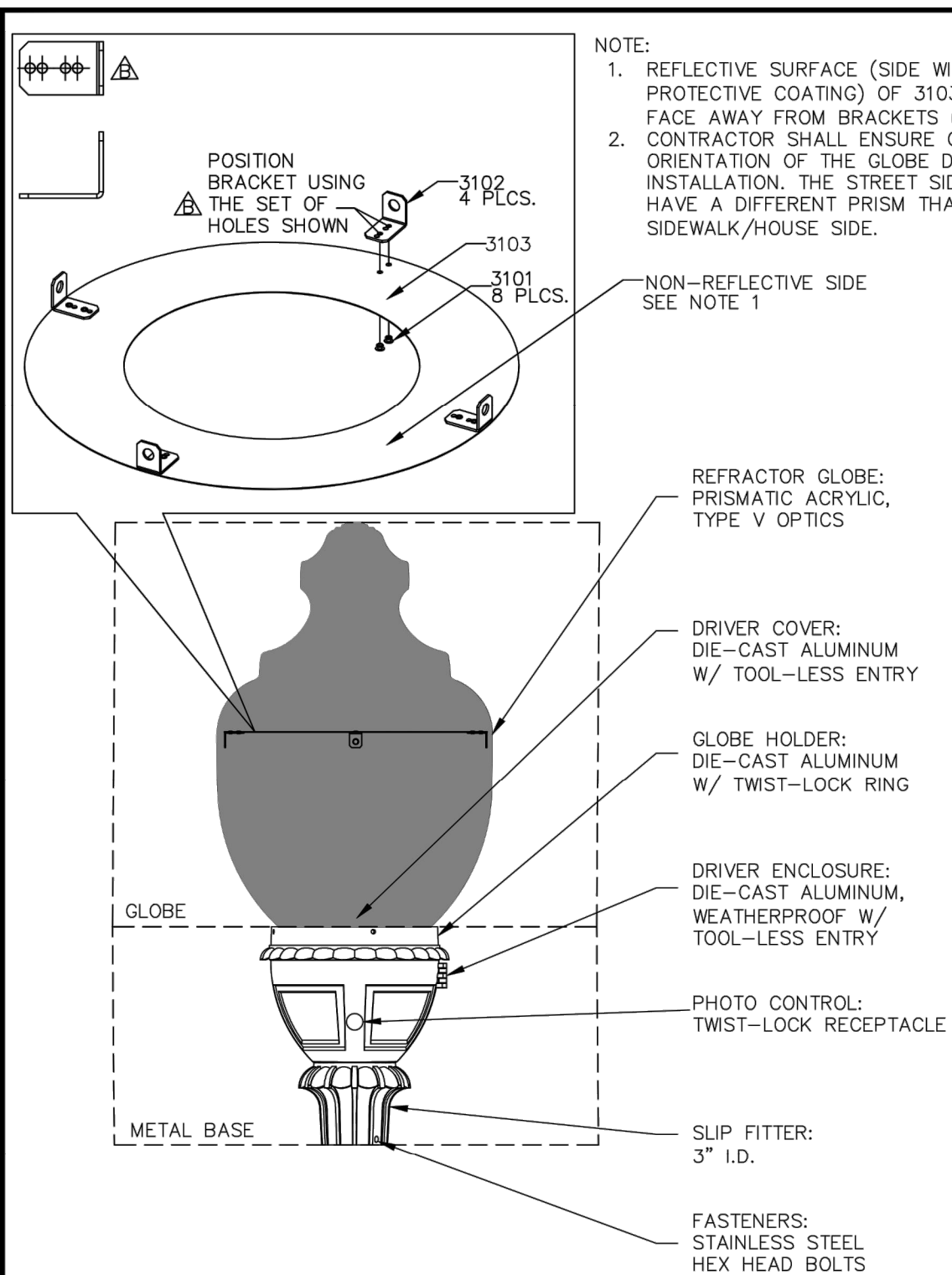


- NOTES:
1. ASTM TYPE 1 ENGINEER GRADE REFLECTIVE SHEETING
  2. BLACK (NON-REFLECTIVE) BACKGROUND WITH YELLOW (REFLECTIVE) TEXT
  3. TOP OF LINE LETTERS: HIGHWAY "C" FONT, NUMBERS AND CARDINAL DIRECTION: HIGHWAY "D" FONT.
  4. DECALS SHALL BE PLACED ON THE STREET SIDE OF THE POLE AT APPROXIMATELY 45° FROM THE DIRECTION OF TRAVEL.
  5. THE POLE NUMBERING PROTOCOL DOCUMENT CAN BE LOCATED HERE: <https://transportation.arlingtonva.us/streetlight-pole-identification-protocol/>

POLE DECALS		
	REVISION & DATE	
ARLINGTON COUNTY, VIRGINIA DEPARTMENT OF ENVIRONMENTAL SERVICES	DRAWING NO. 14120-01	

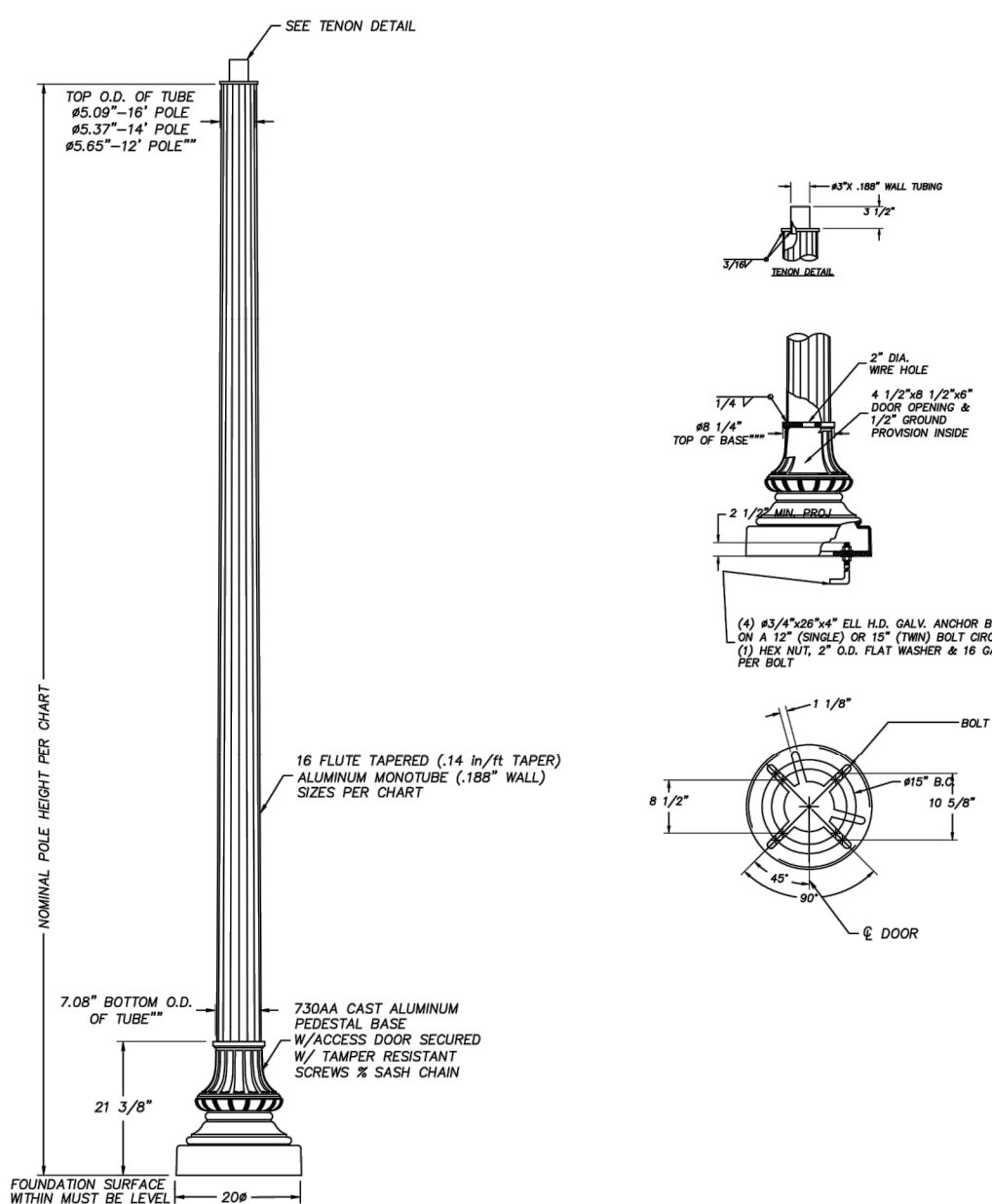


DECORATIVE POST-TOP ALUMINUM STREETLIGHT POLE WITH DOUBLE POST-TOP LUMINAIRES	REV. 1 09/2019	
	REVISION & DATE	
ARLINGTON COUNTY, VIRGINIA DEPARTMENT OF ENVIRONMENTAL SERVICES	DRAWING NO. 14112-02	

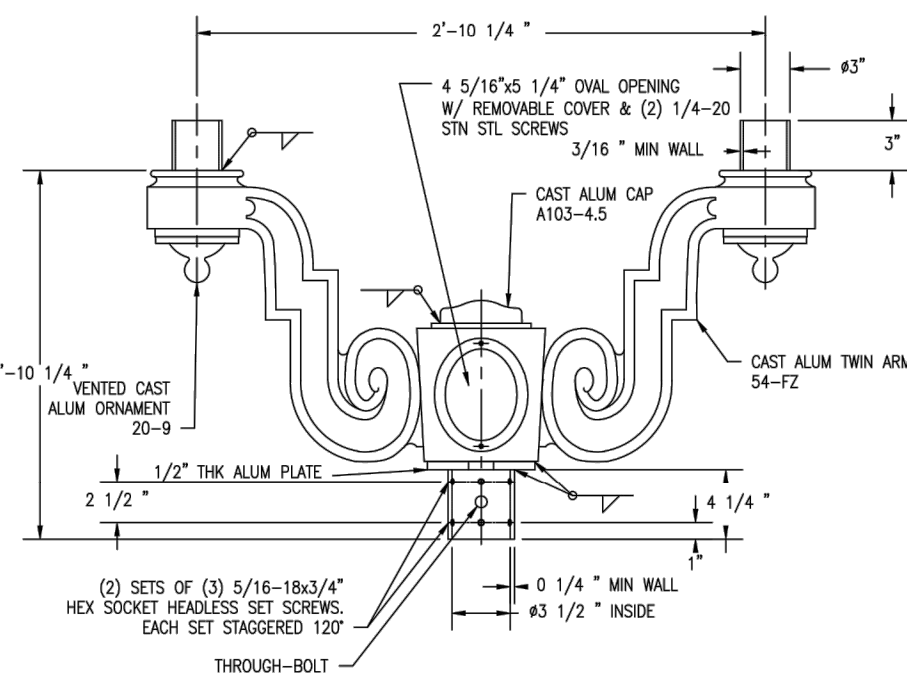


- NOTE:
1. REFLECTIVE SURFACE (SIDE WITH PROTECTIVE COATING) OF 3103 MUST FACE AWAY FROM BRACKETS (3102).
  2. CONTRACTOR SHALL ENSURE CORRECT ORIENTATION OF THE GLOBE DURING INSTALLATION. THE STREET SIDE WILL HAVE A DIFFERENT PRISM THAN THE SIDEWALK/HOUSE SIDE.

DECORATIVE POST-TOP LUMINAIRE		
	REVISION & DATE	
ARLINGTON COUNTY, VIRGINIA DEPARTMENT OF ENVIRONMENTAL SERVICES	DRAWING NO. 14110-01	



DECORATIVE POST-TOP ALUMINUM STREETLIGHT POLE		
	REVISION & DATE	
ARLINGTON COUNTY, VIRGINIA DEPARTMENT OF ENVIRONMENTAL SERVICES	DRAWING NO. 14080-07	



- NOTES:
1. WELDED ASSEMBLY HEAT TREATED TO -16 TEMPER.

DECORATIVE POST-TOP DUAL ARM		
	REVISION & DATE	
ARLINGTON COUNTY, VIRGINIA DEPARTMENT OF ENVIRONMENTAL SERVICES	DRAWING NO. 14090-03	

- NOTES:
1. CARLYLE POLES SHALL BE BLACK IN COLOR AND 16' TALL. CONTRACTOR SHALL USE BLACK COLOR ATTACHMENTS INCLUDING BLACK COLOR ARM.
  2. CONTRACTOR SHALL USE UNION METAL CORP. DESIGN NUMBER N1059-Y1 ORNAMENTAL CAST ALUMINUM BLACK COLOR TWIN LUMINAIRE ARM.
  3. CONTRACTOR SHALL USE RELUME LED UA2 LTL NUMBER 17612. ALL NEW CARLYLE LIGHT POLES SHALL BE UNION METAL CORP. DESIGN NUMBER P874-730-B134-Y3.
  4. ALL LED KITS SHALL BE EQUIPPED WITH SENTINEL RADIO UNITS.



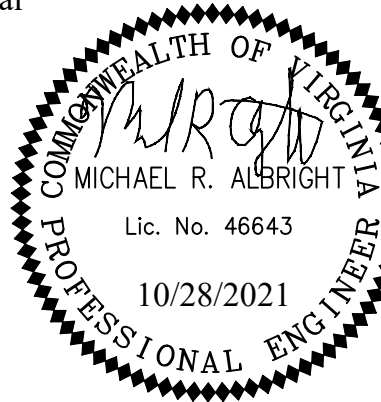
DEPARTMENT OF  
ENVIRONMENTAL SERVICES

Facilities & Engineering Division  
Engineering Bureau  
2100 Clarendon Boulevard, Suite 813  
Arlington, VA 22201  
Phone: 703.228.3629  
Fax: 703.228.3606

**Kimley»Horn**  
Kimley-Horn  
and Associates, Inc.

© 2021 KIMLEY-HORN AND ASSOCIATES, INC.  
11400 Commerce Park Drive, Suite 400  
Reston, Virginia 20191  
Phone: 703-674-1500  
Fax: 703-674-1500

Seal



Approvals Date

Design Team Engineer Supervisor

Construction Management Supervisor

Water, Sewer, Streets Bureau Chief

Transportation Director

Project Manager

Revisions	Date

Designed: DL  
Drawn: MAS  
Checked: MRA  
Miss Utility Transmittal #:

Filename: 010073-SEG 0-4.dwg  
Path: C:\N/A\_2020\110010073\_columbia\_pike\_multimodal\_improvements\110010073.dwg  
Plotted: October 28, 2021  
Plotted by: Patrick.Husted

ARLINGTON COUNTY, VIRGINIA  
DEPARTMENT OF ENVIRONMENTAL SERVICES

STREET LIGHT DETAILS  
COLUMBIA PIKE - ROUTE 244  
COLUMBIA PIKE - MULTIMODAL STREET IMPROVEMENTS  
SEGMENT A  
S. OAK ST. TO S. ORME ST.

SCALE: HOR. N/A VERT. N/A SHEET: A15.4 of A15.7



DEPARTMENT OF  
ENVIRONMENTAL SERVICES

11/23/2021  
APPROVAL DATE

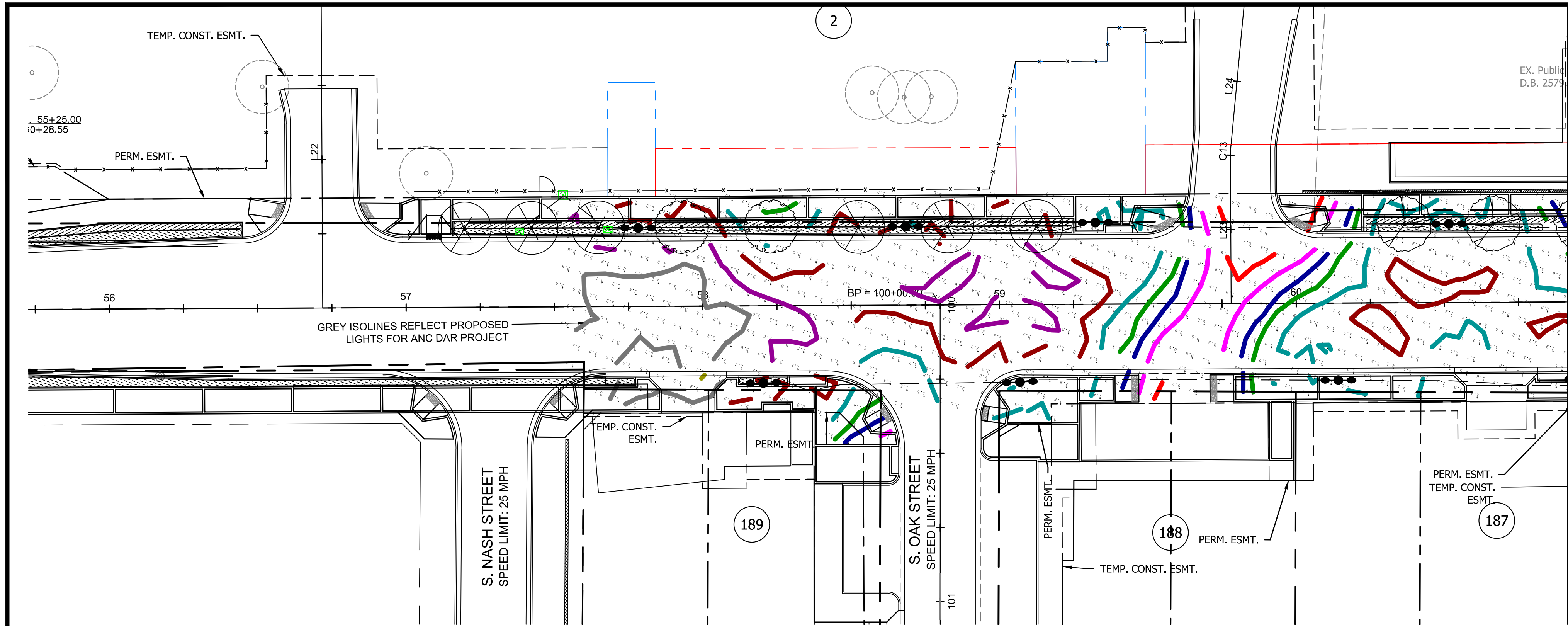










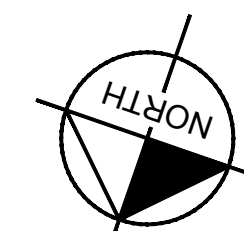
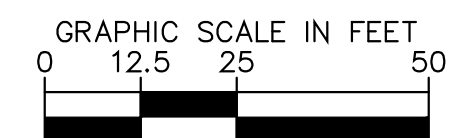


## PHOTOMETRIC LEGEND

VALUE (FC)	COLOR	VALUE (FC)	COLOR
0.2	Black	1.2	Dark Blue
0.3	Blue	1.4	Green
0.4	Light Green	1.8	Teal
0.6	Cyan	2.2	Red
0.8	Red	2.6	Purple
1.0	Magenta	3.0	Brown

## LEGEND

- Proposed Double Carlyle LED on New Light Pole
  - Proposed Double Carlyle LED on Existing Light Pole
  - Proposed Double Carlyle LED on Relocated Light Pole
  - Existing Double Carlyle LED on Relocated Pole
  - Existing Double Carlyle LED on New Pole
  - Existing Double Carlyle LED To Remain
  - Proposed LED on PED Pole
  - Existing Single Phase Electrical Service
  - Proposed Service Meter
  - Proposed Quazite Junction Box, LT-17
  - Existing Cobrahead Luminaire and Mast Arm to be Removed
  - Existing Cobrahead Light Pole to be Removed
  - Existing Carlyle Light Pole to be Removed/Relocated
  - Existing Carlyle Light Pole to Remain (Side Streets)
  - Proposed 2" SCHD 40 PVC Conduit
  - Proposed 2" SCHD 40 PVC Bored Conduit
  - Existing Conduit
  - Existing/Proposed Luminaire on Traffic Signal Pole
- See Sheet 14.6.4, detail 1, for streetlight conduit location.



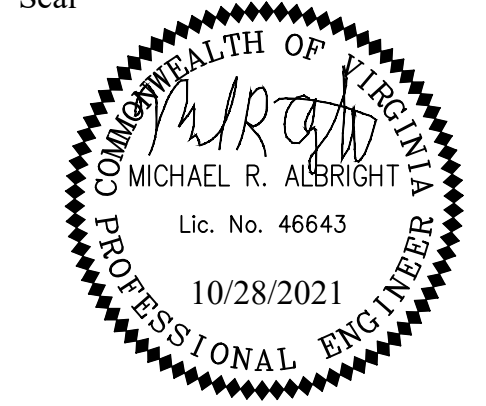
DEPARTMENT OF  
ENVIRONMENTAL SERVICES

Facilities & Engineering Division  
Engineering Bureau  
2100 Clarendon Boulevard, Suite 813  
Arlington, VA 22201  
Phone: 703.228.3629  
Fax: 703.228.3606

**Kimley»Horn**  
Kimley-Horn  
and Associates, Inc.

© 2021 KIMLEY-HORN AND ASSOCIATES, INC.  
11400 Commerce Park Drive, Suite 400  
Reston, Virginia 20191  
Phone: 703-674-1300  
Fax: 703-674-1350

Seal



Approvals \_\_\_\_\_ Date \_\_\_\_\_

Design Team Engineer Supervisor \_\_\_\_\_

Construction Management Supervisor \_\_\_\_\_

Water, Sewer, Streets Bureau Chief \_\_\_\_\_

Transportation Director \_\_\_\_\_

Project Manager \_\_\_\_\_

Revisions \_\_\_\_\_ Date \_\_\_\_\_

Designed: DL  
Drawn: BAA  
Checked: DL  
Miss Utility Transmittal #: \_\_\_\_\_

Filename: 010073-A-PHOTO.dwg  
Path: C:\NVA\_RDPW\11000073\columbia\_pike\_multimodal\_improvements\11000073.dgn  
Plotted: October 28, 2021  
Plotted by: Patrick.Husted

ARLINGTON COUNTY, VIRGINIA  
DEPARTMENT OF ENVIRONMENTAL SERVICES

PHOTOMETRIC PLAN  
COLUMBIA PIKE - ROUTE 244  
COLUMBIA PIKE - MULTIMODAL STREET IMPROVEMENTS  
SEGMENT A  
STA. 56+00 TO STA. 64+50

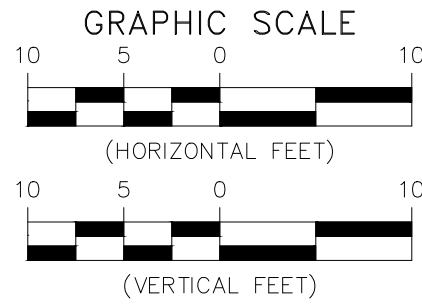
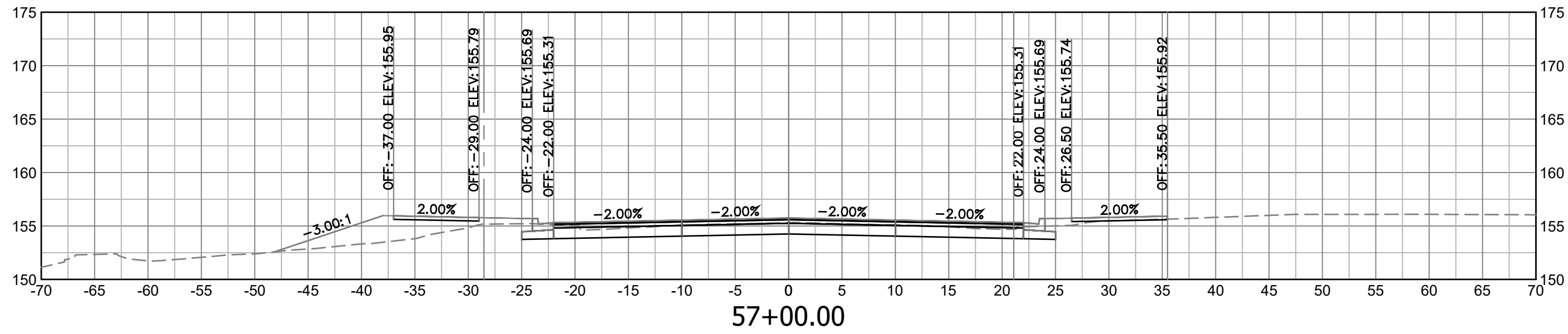
SCALE: HOR. 1" = 25' VERT. N/A SHEET: A15.7 of A15.7



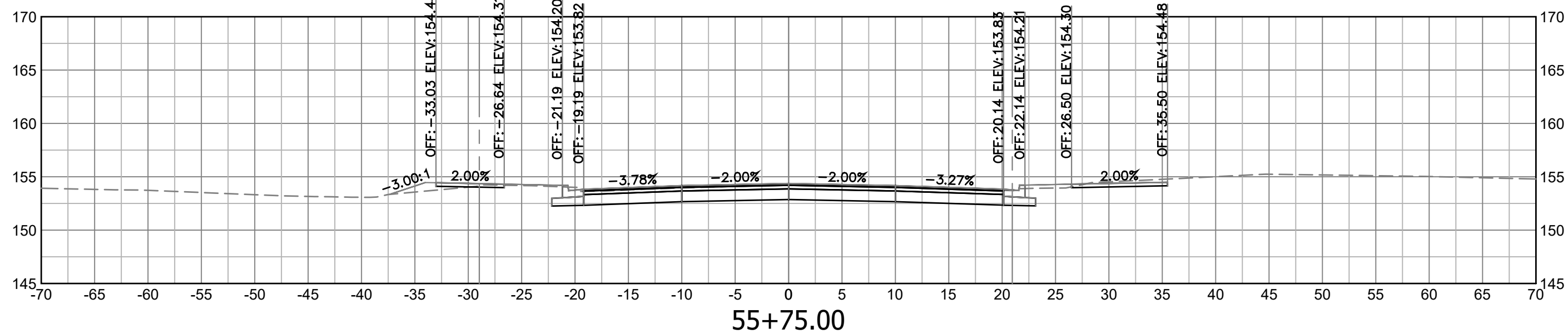
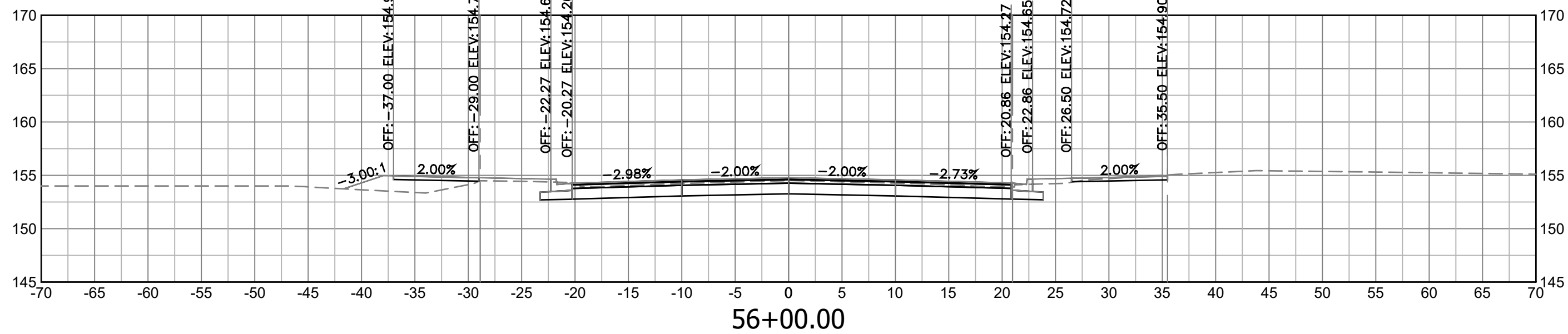
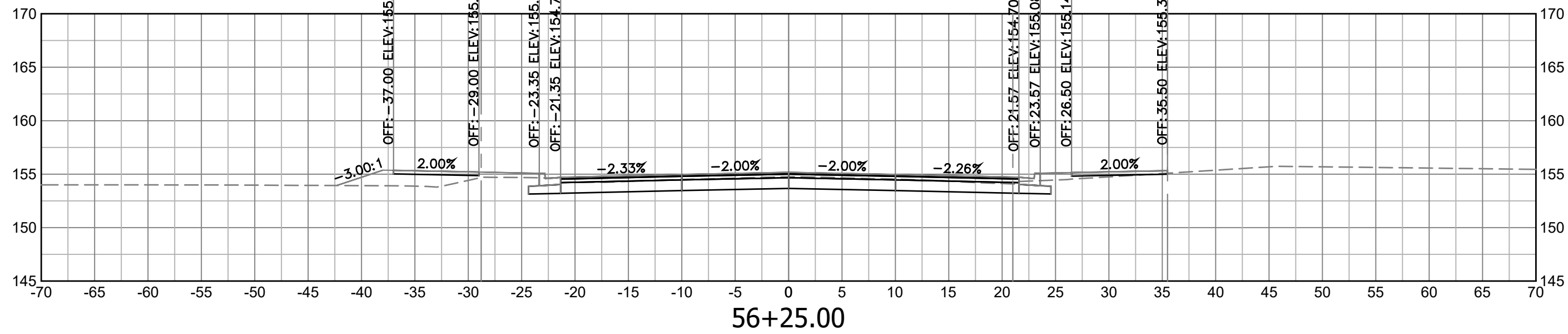
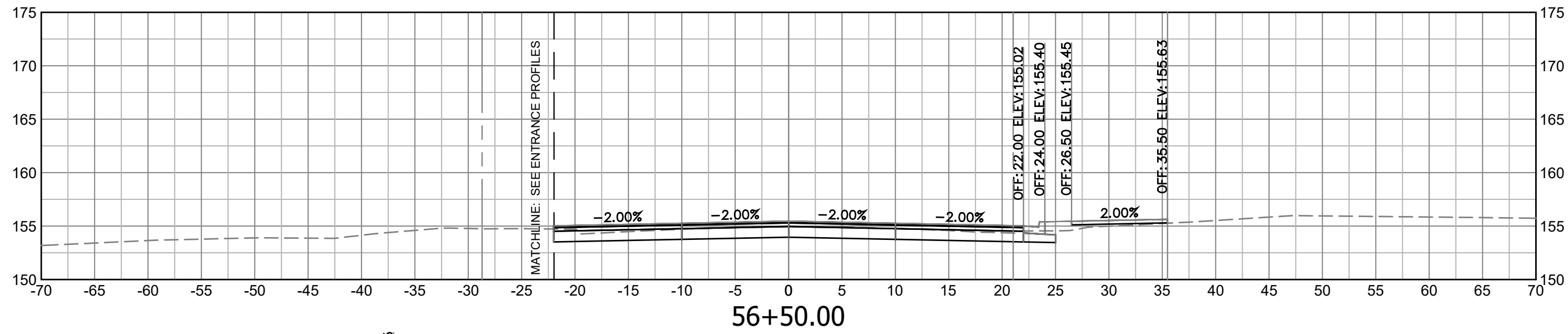
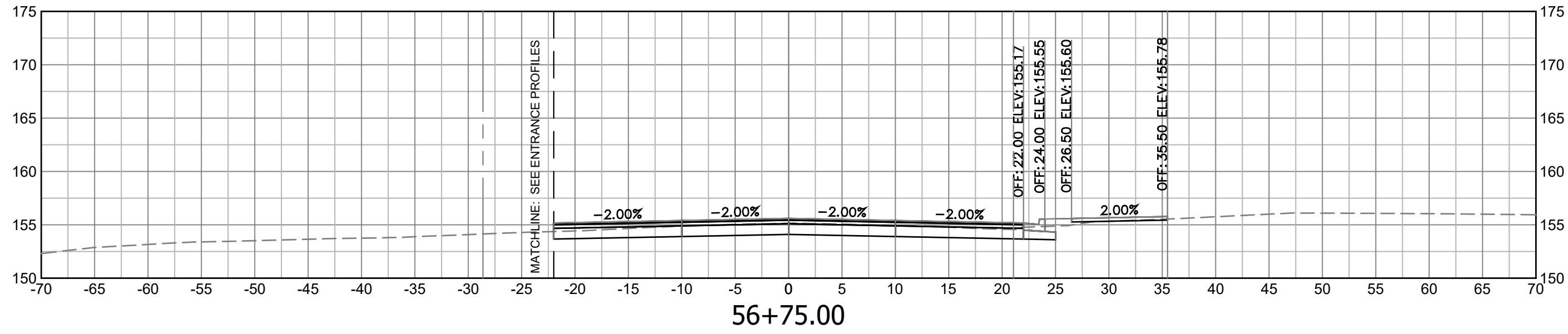
DEPARTMENT OF  
ENVIRONMENTAL SERVICES

11/23/2021  
APPROVAL DATE





- LEGEND
- EXIST. RIGHT OF WAY
  - EXIST. MAINTENANCE EASEMENT
  - PROP. TEMPORARY CONSTRUCTION EASEMENT
  - PROP. UTILITY EASEMENT
  - PROP. PERMANENT EASEMENT
  - EXIST. PARKING LOT LINE
  - EXIST. BUILDING LINE

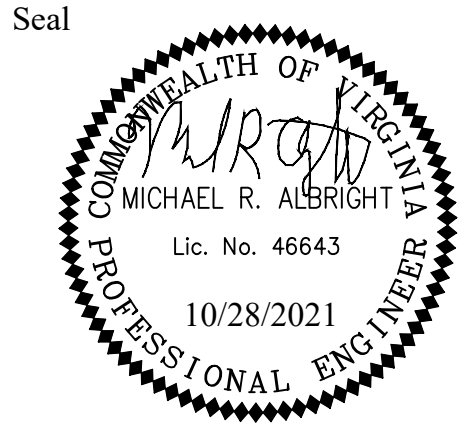


DEPARTMENT OF ENVIRONMENTAL SERVICES

Facilities & Engineering Division  
Engineering Bureau  
2100 Clarendon Boulevard, Suite 813  
Arlington, VA 22201  
Phone: 703.228.3629  
Fax: 703.228.3606

**Kimley»Horn**  
Kimley-Horn  
and Associates, Inc.

© 2021 KIMLEY-HORN AND ASSOCIATES, INC.  
11400 Commerce Park Drive, Suite 400  
Reston, Virginia 20191  
Phone: 703-674-1500  
Fax: 703-674-1500



Approvals Date

Design Team Engineer Supervisor

Construction Management Supervisor

Water, Sewer, Streets Bureau Chief

Transportation Director

Project Manager

Revisions	Date

Designed: EJD  
Drawn: TEC  
Checked: MRA  
Miss Utility Transmittal #:

Filename: 010073-A-XS401.dwg  
Path: C:\NVA\_2020\110010073\_columbia\_pike\_multimodal\_production\work  
1: Final design of columbia pike segment project at 1:1 - 11/1/2020  
Plotted: October 28, 2021  
Plotted by: Patrick.Husted

ARLINGTON COUNTY, VIRGINIA  
DEPARTMENT OF ENVIRONMENTAL SERVICES

CROSS SECTIONS - COLUMBIA PIKE  
COLUMBIA PIKE - ROUTE 244  
COLUMBIA PIKE - MULTIMODAL STREET IMPROVEMENTS  
SEGMENT A  
STA. 55+75 TO STA. 57+00

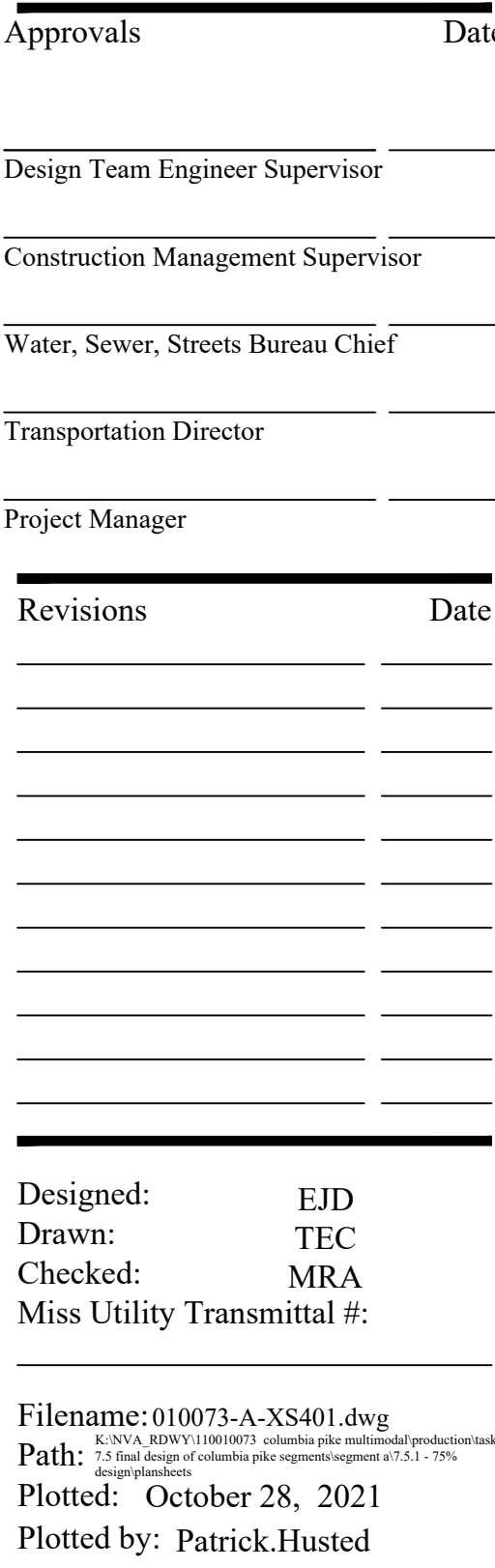
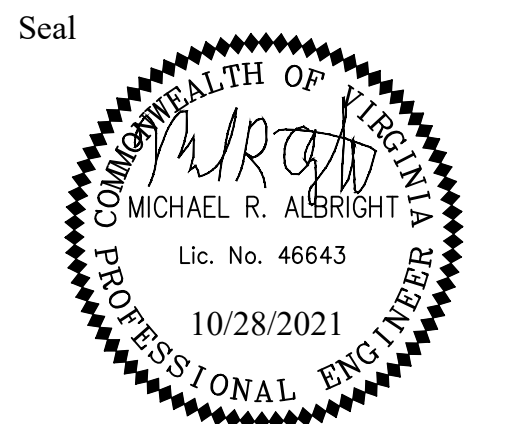
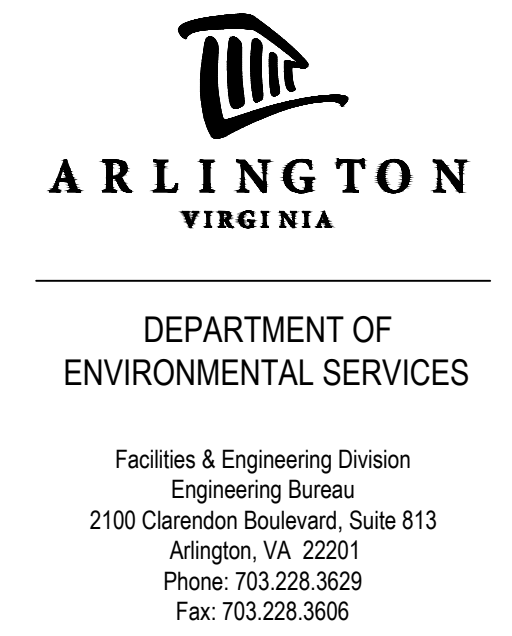
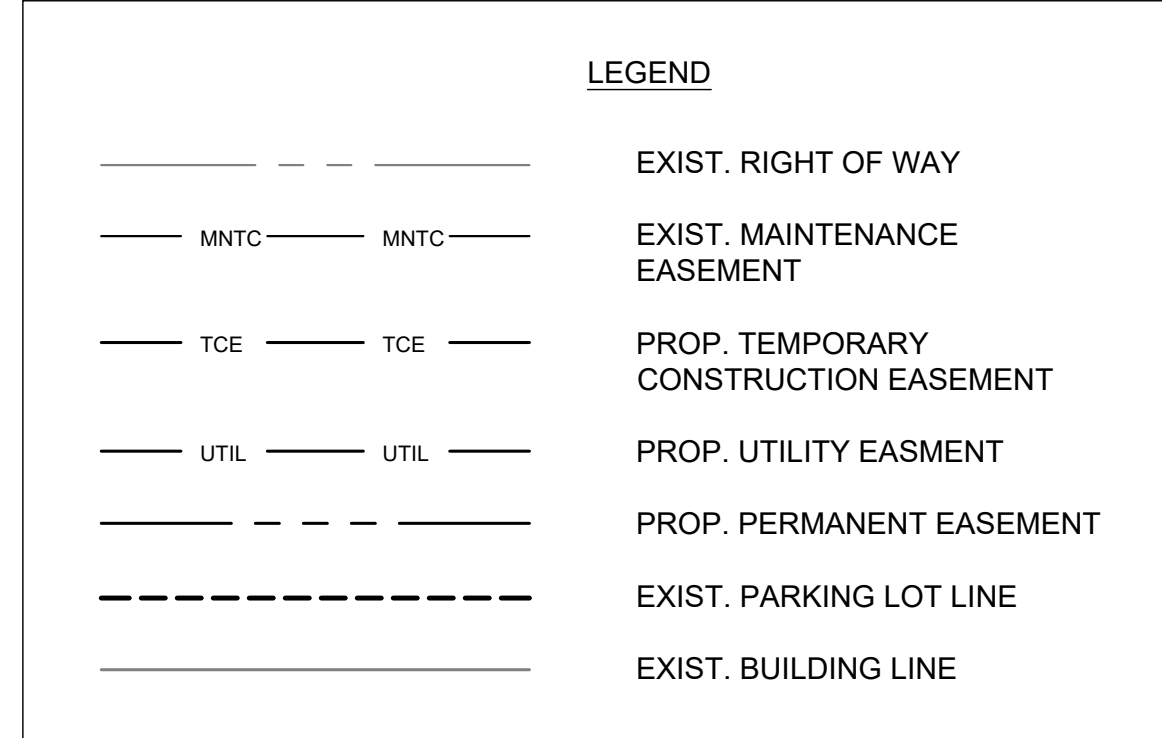
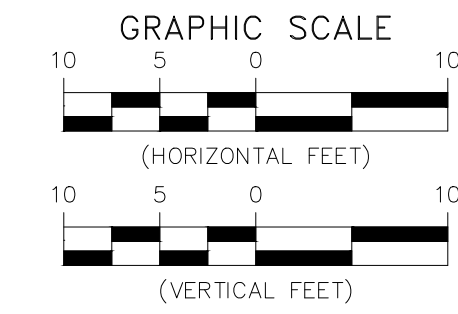
SCALE: HOR. 1" = 25' VERT. 1" = 5' SHEET: A16.1 of A16.9



DEPARTMENT OF ENVIRONMENTAL SERVICES

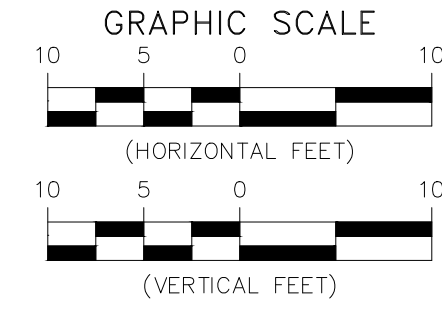
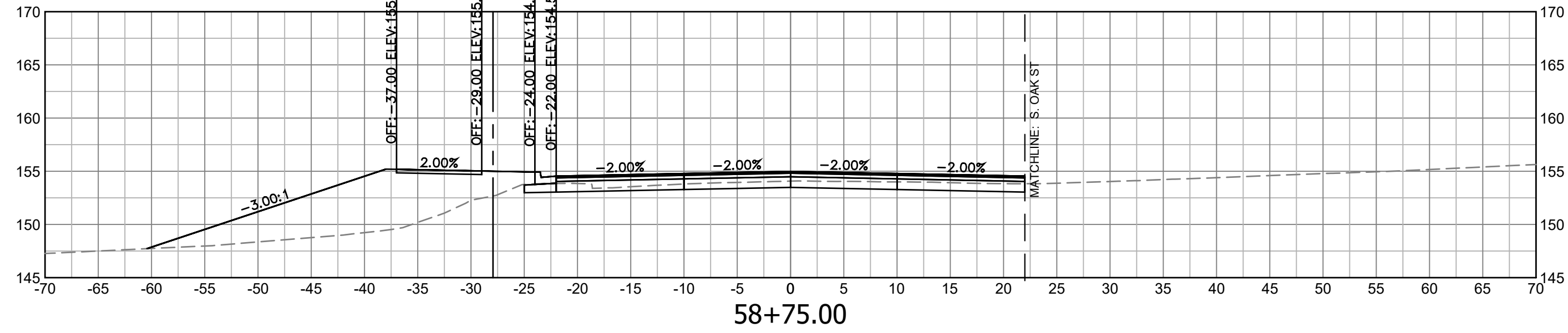
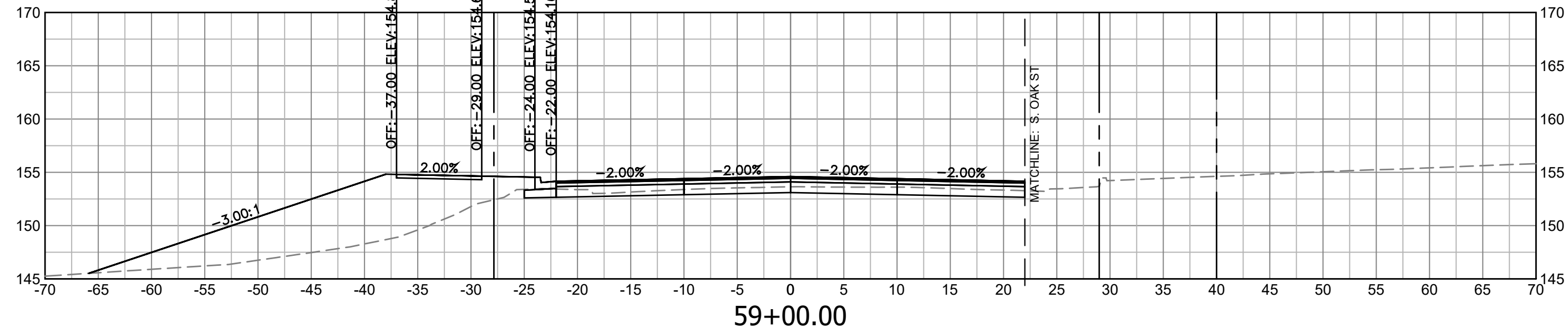
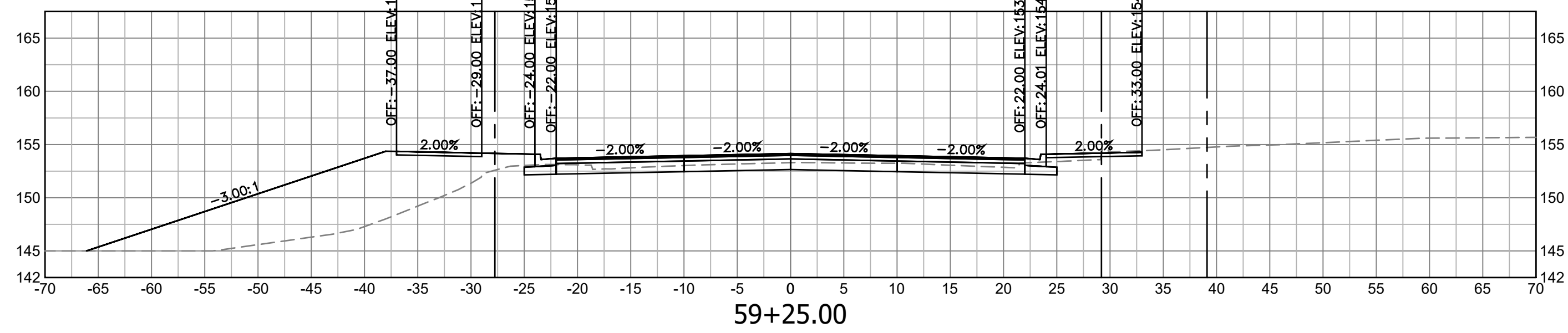
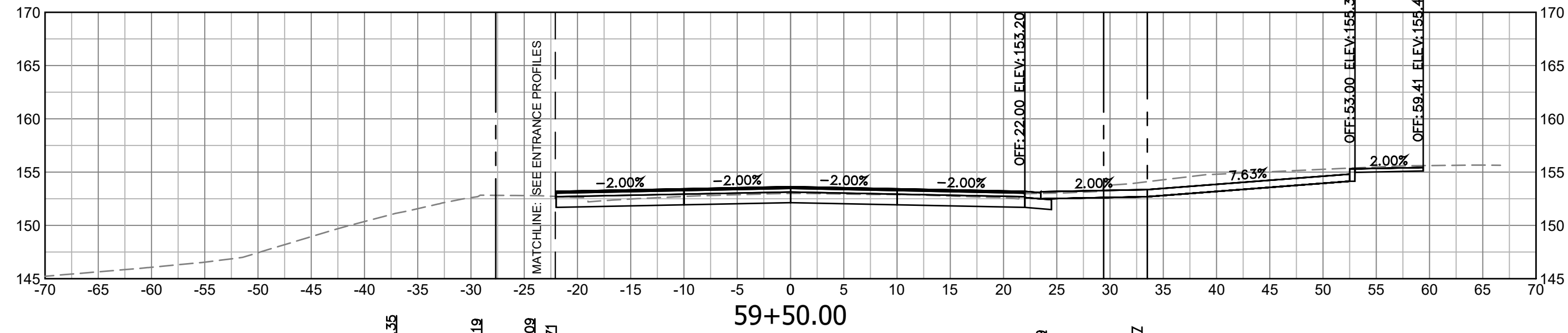
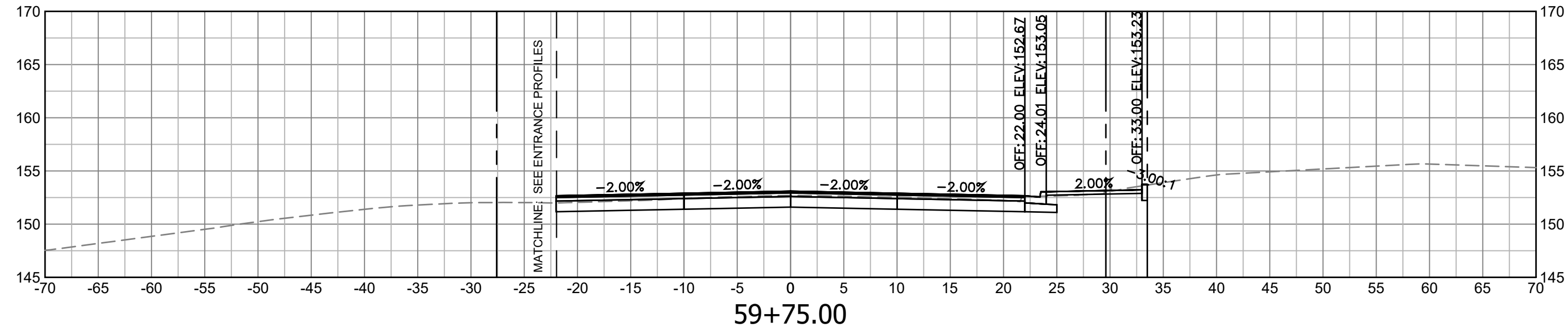
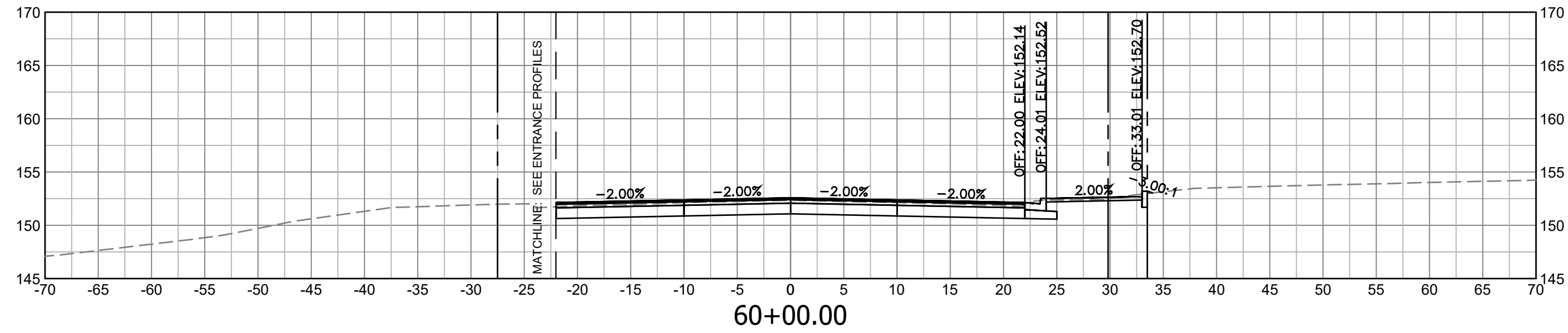
11/23/2021  
APPROVAL DATE





ARLINGTON COUNTY, VIRGINIA DEPARTMENT OF ENVIRONMENTAL SERVICES		
CROSS SECTIONS - COLUMBIA PIKE COLUMBIA PIKE - ROUTE 244 COLUMBIA PIKE - MULTIMODAL STREET IMPROVEMENTS SEGMENT A STA. 57+25 TO STA. 58+50		
SCALE:	HOR. 1" = 25' VERT. 1" = 5'	SHEET: A16.2 of A16.9





LEGEND	
---	EXIST. RIGHT OF WAY
---	EXIST. MAINTENANCE EASEMENT
---	PROP. TEMPORARY CONSTRUCTION EASEMENT
---	PROP. UTILITY EASEMENT
---	PROP. PERMANENT EASEMENT
---	EXIST. PARKING LOT LINE
---	EXIST. BUILDING LINE



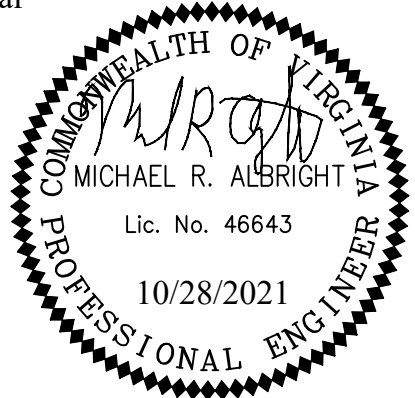
DEPARTMENT OF ENVIRONMENTAL SERVICES

Facilities & Engineering Division  
Engineering Bureau  
2100 Clarendon Boulevard, Suite 813  
Arlington, VA 22201  
Phone: 703.228.3629  
Fax: 703.228.3606

**Kimley»Horn**  
Kimley-Horn  
and Associates, Inc.

© 2021 KIMLEY-HORN AND ASSOCIATES, INC.  
11400 Commerce Park Drive, Suite 400  
Reston, Virginia 20191  
Phone: 703-674-1500  
Fax: 703-674-1500

Seal



Approvals Date

Design Team Engineer Supervisor

Construction Management Supervisor

Water, Sewer, Streets Bureau Chief

Transportation Director

Project Manager

Revisions Date

Designed: EJD  
Drawn: TEC  
Checked: MRA  
Miss Utility Transmittal #:

Filename: 010073-A-XS401.dwg  
Path: S:\NSA\_2020\110010073\_columbia\_pike\_multimodal\_production\ask  
1: final design of columbia pike segment a station 58+75 to 60+00  
design\planbook  
Plotted: October 28, 2021  
Plotted by: Patrick.Husted

ARLINGTON COUNTY, VIRGINIA  
DEPARTMENT OF ENVIRONMENTAL SERVICES

CROSS SECTIONS - COLUMBIA PIKE  
COLUMBIA PIKE - ROUTE 244  
COLUMBIA PIKE - MULTIMODAL STREET IMPROVEMENTS  
SEGMENT A  
STA. 58+75 TO STA. 60+00

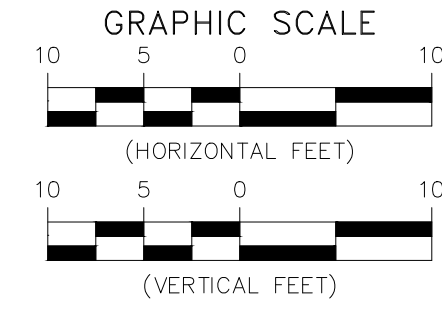
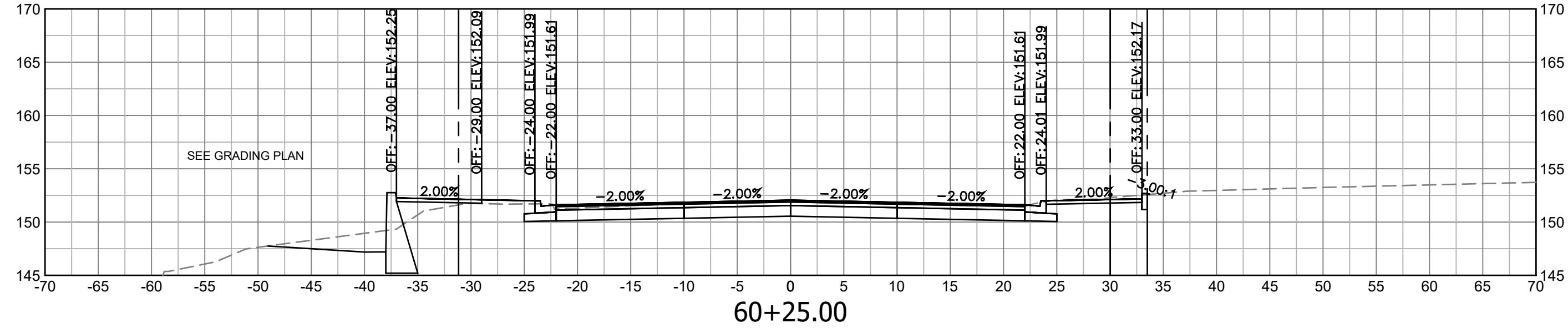
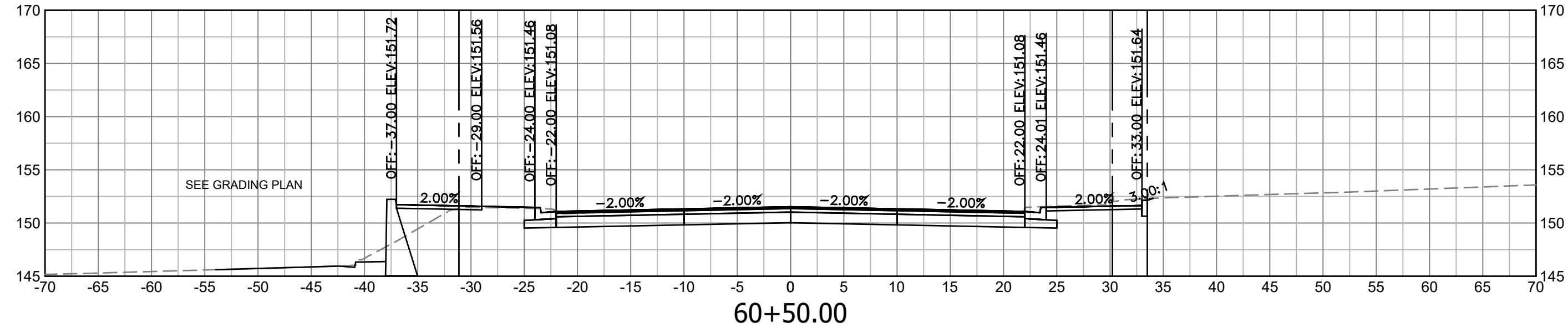
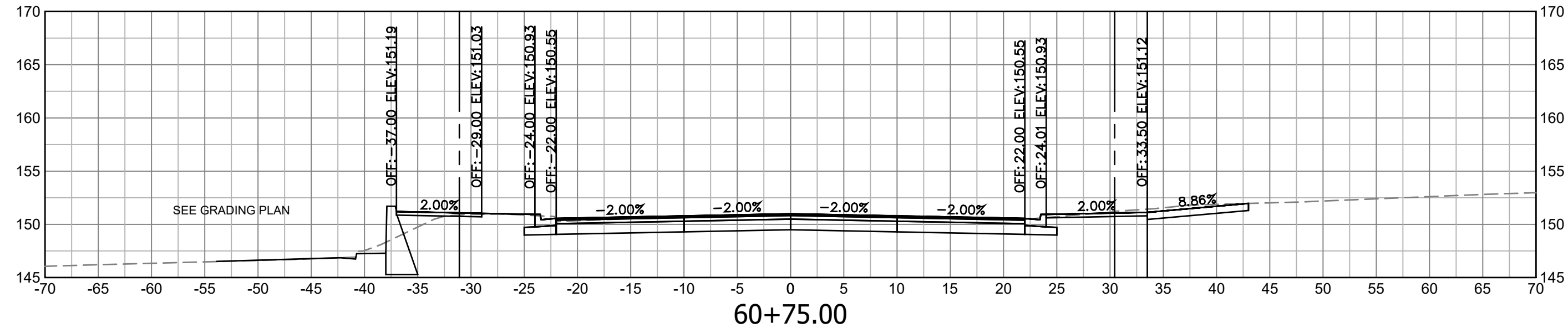
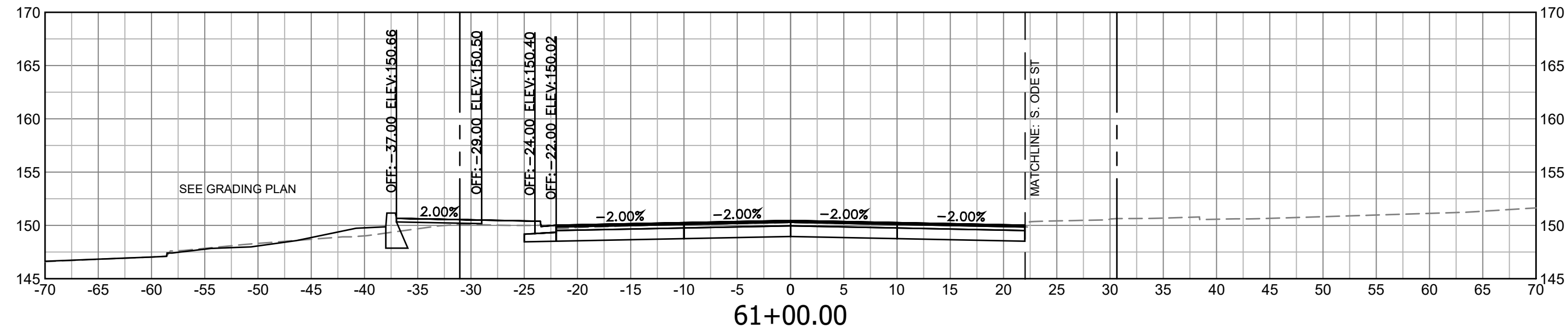
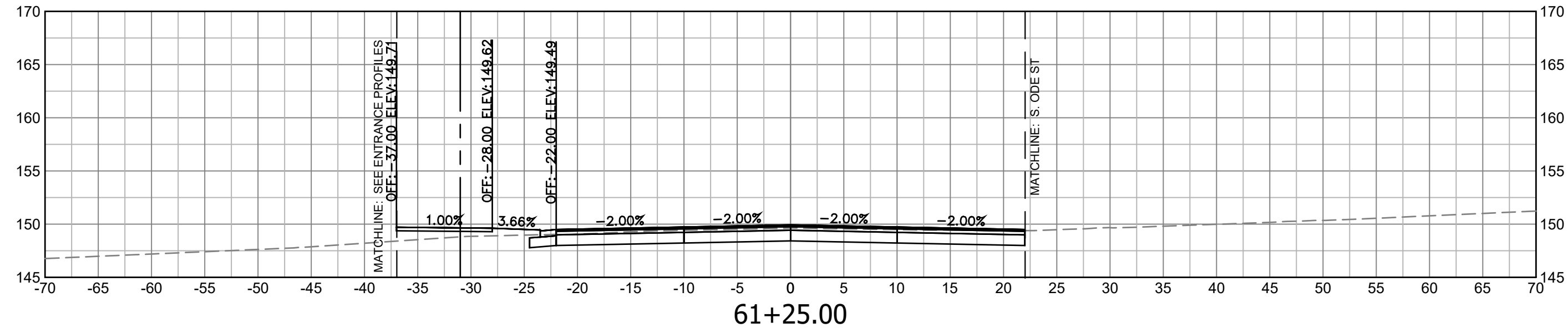
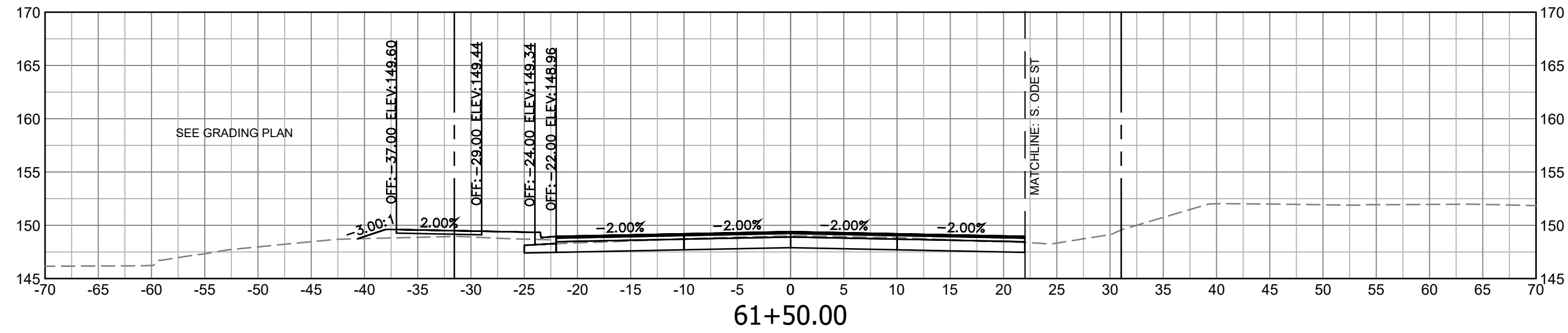
SCALE: HOR. 1" = 25' VERT. 1" = 5' SHEET: A16.3 of A16.9



DEPARTMENT OF ENVIRONMENTAL SERVICES

11/23/2021  
APPROVAL DATE





LEGEND	
---	EXIST. RIGHT OF WAY
--- MNTC --- MNTC ---	EXIST. MAINTENANCE EASEMENT
--- TCE --- TCE ---	PROP. TEMPORARY CONSTRUCTION EASEMENT
--- UTIL --- UTIL ---	PROP. UTILITY EASMENT
---	PROP. PERMANENT EASEMENT
---	EXIST. PARKING LOT LINE
---	EXIST. BUILDING LINE



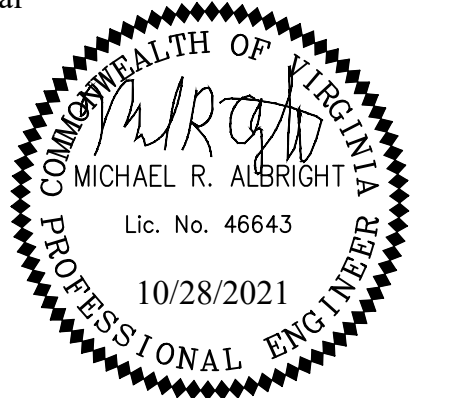
DEPARTMENT OF ENVIRONMENTAL SERVICES

Facilities & Engineering Division  
Engineering Bureau  
2100 Clarendon Boulevard, Suite 813  
Arlington, VA 22201  
Phone: 703.228.3629  
Fax: 703.228.3606

**Kimley»Horn**  
Kimley-Horn  
and Associates, Inc.

© 2021 KIMLEY-HORN AND ASSOCIATES, INC.  
11400 Commerce Park Drive, Suite 400  
Reston, Virginia 20191  
Phone: 703-674-1500  
Fax: 703-674-1390

Seal



Approvals Date

Design Team Engineer Supervisor

Construction Management Supervisor

Water, Sewer, Streets Bureau Chief

Transportation Director

Project Manager

Revisions Date

Designed: EJD  
Drawn: TEC  
Checked: MRA  
Miss Utility Transmittal #:

Filename: 010073-A-XS401.dwg  
Path: C:\Users\JRD\Documents\010073-A-XS401.dwg  
Plotted: October 28, 2021  
Plotted by: Patrick.Husted

ARLINGTON COUNTY, VIRGINIA  
DEPARTMENT OF ENVIRONMENTAL SERVICES

CROSS SECTIONS - COLUMBIA PIKE  
COLUMBIA PIKE - ROUTE 244  
COLUMBIA PIKE - MULTIMODAL STREET IMPROVEMENTS  
SEGMENT A  
STA. 60+25 TO STA. 61+50

SCALE: HOR. 1" = 25' VERT. 1" = 5' SHEET: A16.4 of A16.9



DEPARTMENT OF ENVIRONMENTAL SERVICES

11/23/2021  
APPROVAL DATE