

FOR WATERLINE CONST. ONLY

- NOTES:
1. PROFILE STATIONING ALONG CENTERLINE OF PIPE
 2. SEE SERIES 10 FOR FULL UTILITY NETWORK PLAN VIEWS.
 3. SEE SHEET A13.4 FOR RESTRAINT TABLE
 4. WATERLINE TO BE INSTALLED, TESTED, AND PUT IN SERVICE PRIOR TO STORM AND SANITARY PIPE INSTALLATION. CONTRACTOR TO CONFIRM EXISTING WATERLINE IS DECOMMISSIONED PRIOR TO REMOVAL. DESIGN ASSUMES THAT THE PROPOSED WATERLINE IS GENERALLY INSTALLED PRIOR TO OTHER UTILITIES TO MITIGATE CONFLICTS.
 5. WHERE MINIMUM VERTICAL CLEARANCES BETWEEN UTILITIES CANNOT BE MET, CONTRACTOR TO INSTALL CONCRETE PIERS AND/OR REINFORCED CONCRETE CRADLE PER ARLINGTON COUNTY STANDARD DRAWING M-7.0

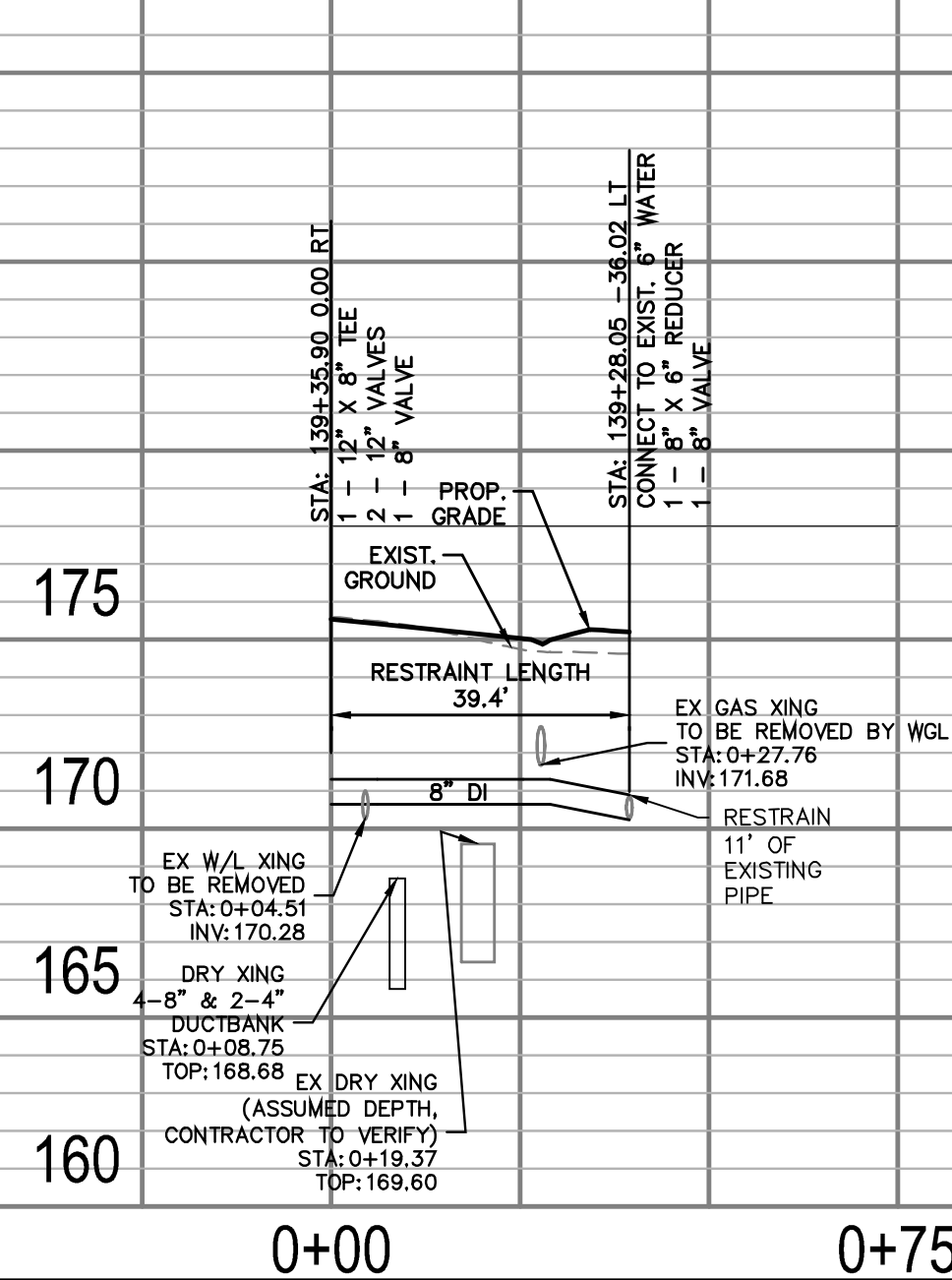
LEGEND	
	PROP. SERVICE CONNECTION
	PROP. 4" WATER PIPE
	PROP. 6" WATER PIPE
	PROP. 8" WATER PIPE
	PROP. 12" WATER PIPE
	PROP. VALVE
	PROP. FIRE HYDRANT
	PROP. REDUCER
	PROP. TEE
	PROP. CROSS
	PROP. 11.25" BEND
	PROP. 22.5" BEND
	PROP. 45° BEND
	PROP. 90° BEND
	PROP. WATER METER
	PROP. CAP
	FILL & ABANDON UTILITY LINE
	REMOVE UTILITY LINE
	REMOVE VALVE BOX

Revisions	Date

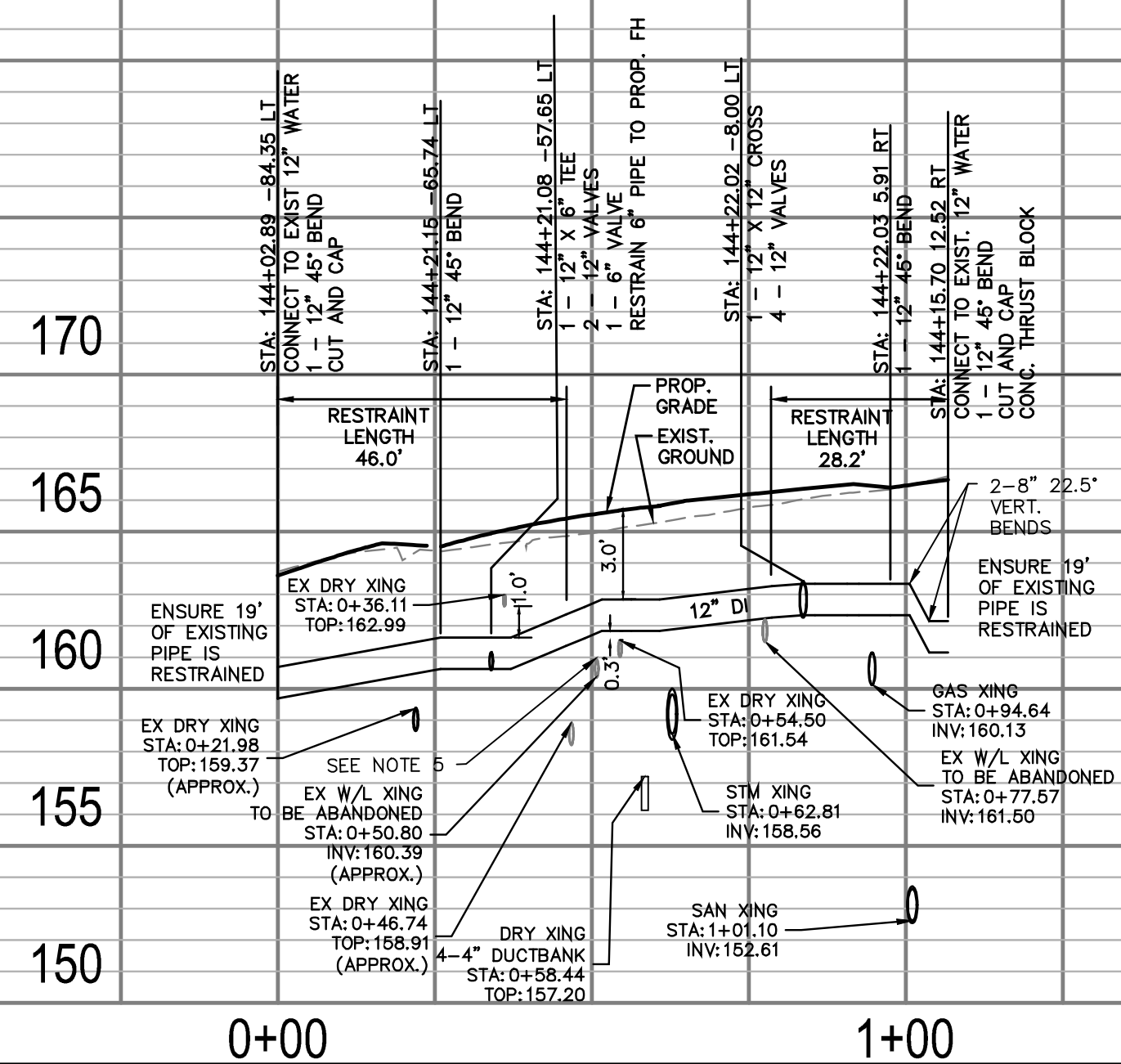
Designed: KF
Drawn: KF
Checked: MA
Miss Utility Transmittal #:

Filename: 010073-F-WATR.dwg
Path: C:\Users\KJ\OneDrive\Documents\Projects\010073-F-WATR.dwg
Plotted: October 14, 2021
Plotted by: Miguel Tyshing

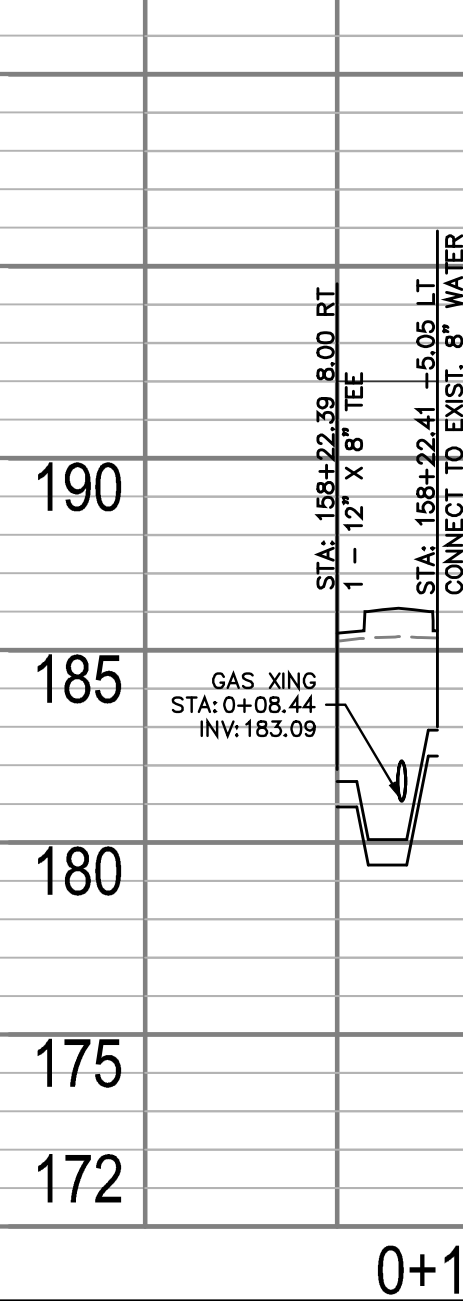
WATERLINE PROFILE 1.2



WATERLINE PROFILE 1.4



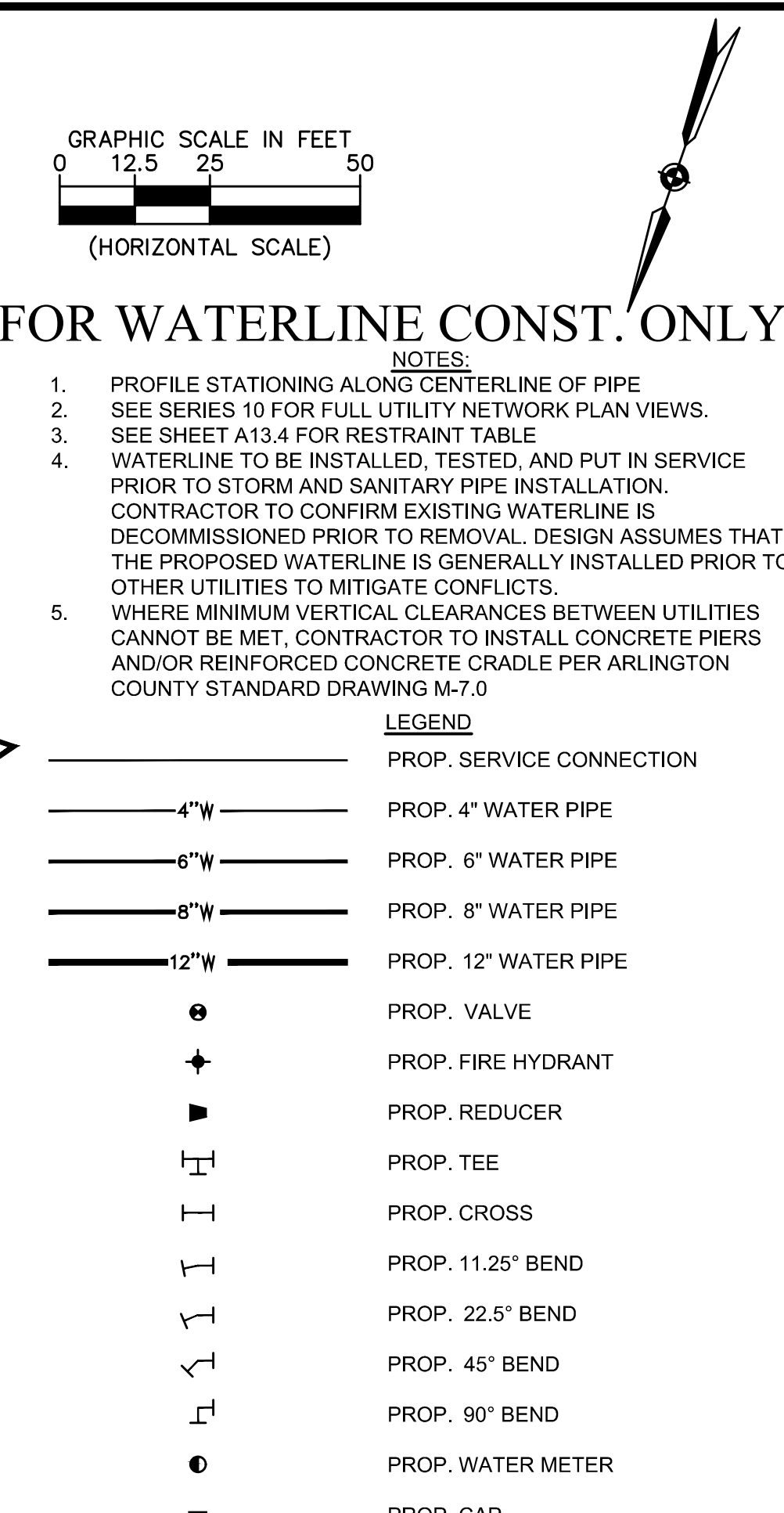
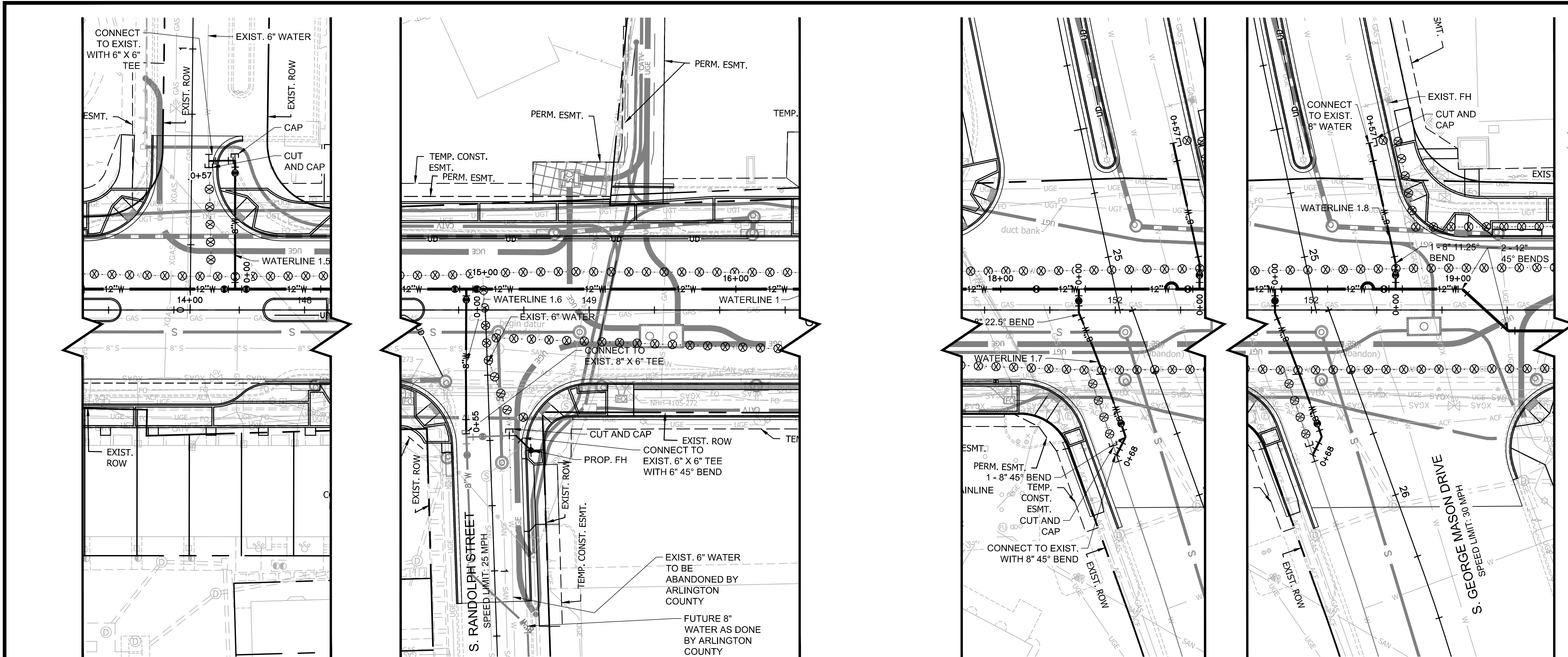
WATERLINE PROFILE 1.12



ARLINGTON COUNTY, VIRGINIA
DEPARTMENT OF ENVIRONMENTAL SERVICES

WATERLINE PLAN AND PROFILES - CONNECTIONS
COLUMBIA PIKE - ROUTE 244
COLUMBIA PIKE - MULTIMODAL STREET IMPROVEMENTS
SEGMENT F

SCALE: HOR. 1" = 25' VERT. 1" = 5' SHEET: F13.6 of F13.10



ARLINGTON VIRGINIA

DEPARTMENT OF ENVIRONMENTAL SERVICES

Facilities & Engineering Division
Engineering Bureau
2100 Clarendon Boulevard, Suite 813
Arlington, VA 22201
Phone: 703.228.3629
Fax: 703.228.3606

Kimley»Horn
Kimley-Horn
and Associates, Inc.

© 2021 KIMLEY-HORN AND ASSOCIATES, INC.
11400 Commerce Park Drive, Suite 400
Reston, Virginia 20191
Phone: 703-674-1500
Fax: 703-674-1500

Seal

Approvals _____ Date _____

Design Team Engineer Supervisor _____

Construction Management Supervisor _____

Water, Sewer, Streets Bureau Chief _____

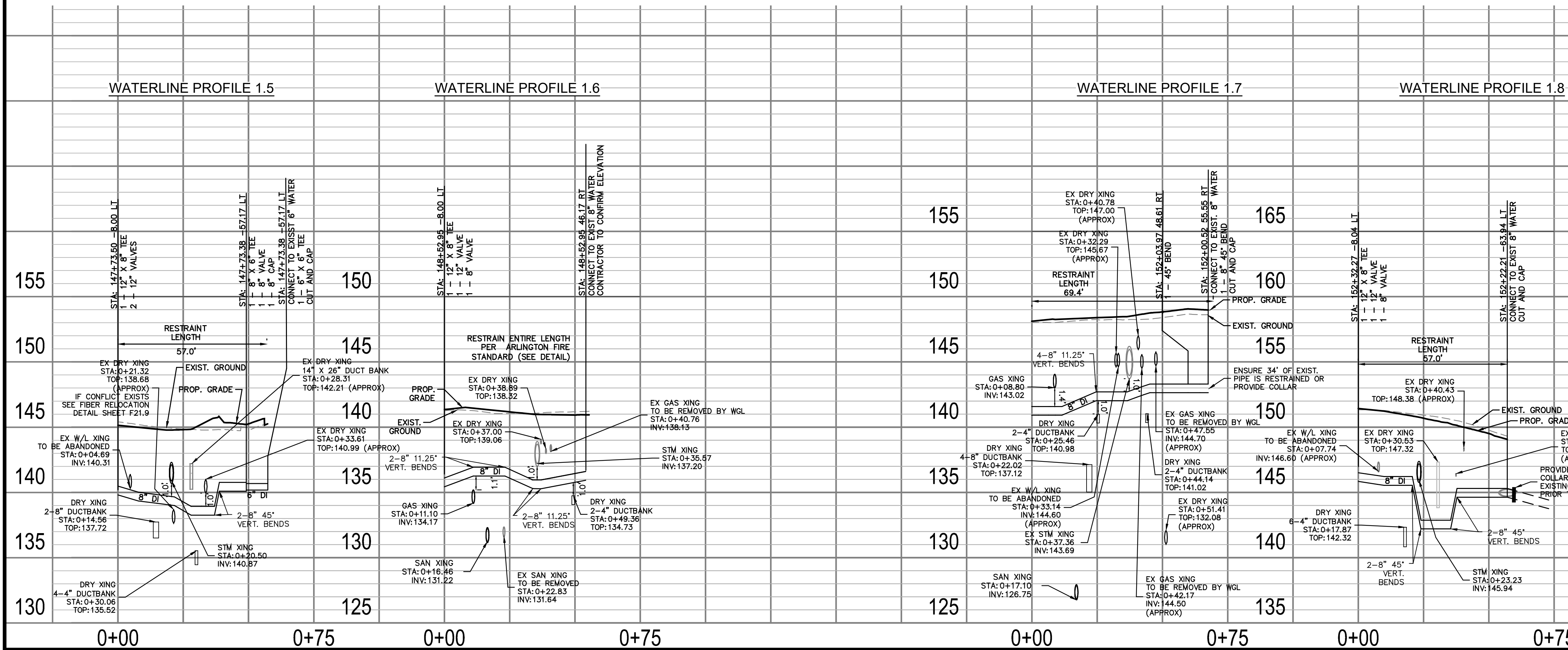
Transportation Director _____

Project Manager _____

Revisions	Date

Designed: _____ KF
Drawn: _____ KF
Checked: _____ MA
Miss Utility Transmittal #: _____

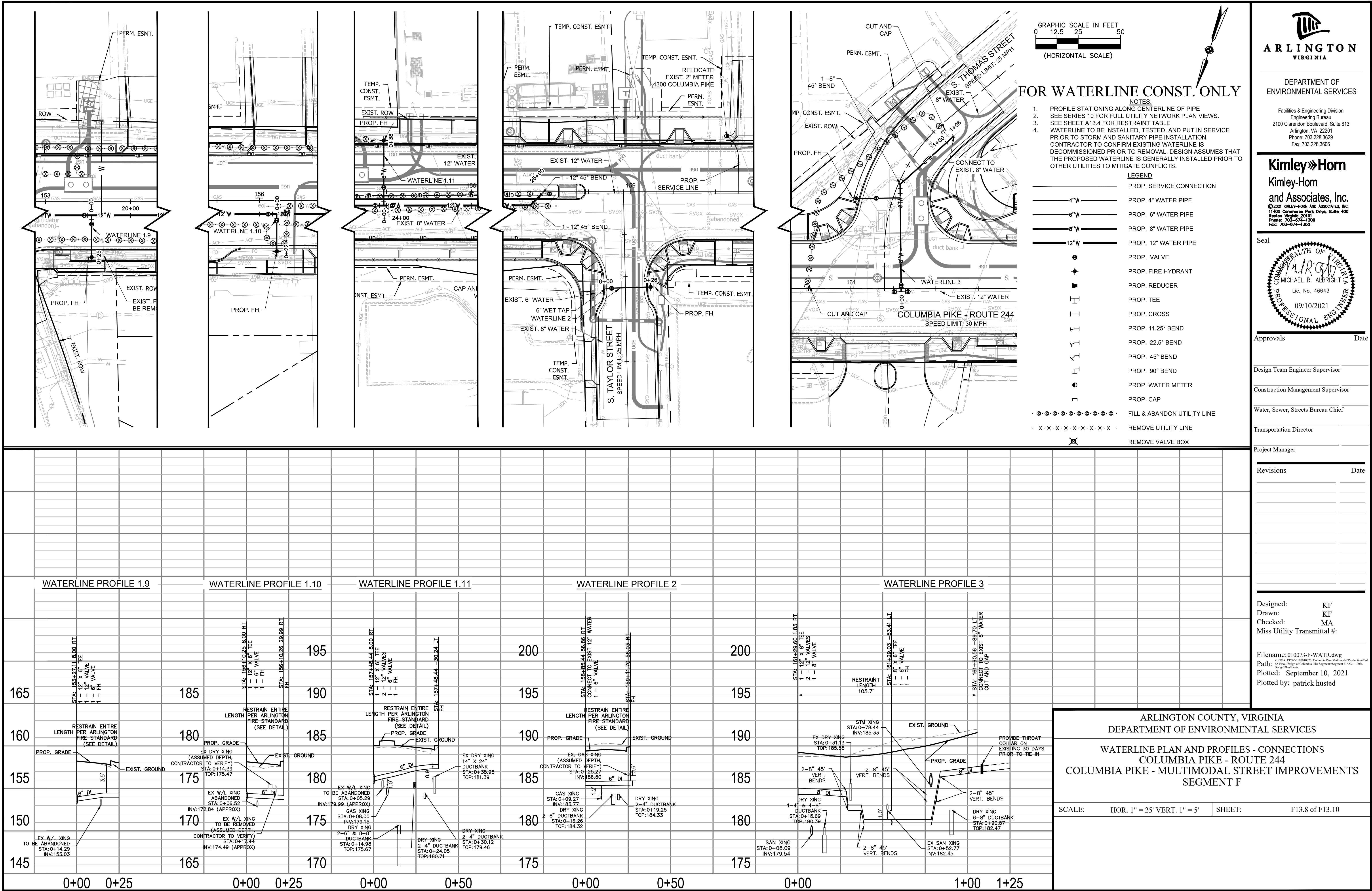
Filename: 010073-F-WATR.dwg
Path: C:\Users\BUREAU\OneDrive\Projects\010073-F-WATR.dwg
Plotted: October 12, 2021
Plotted by: Miguel.Tysing



ARLINGTON COUNTY, VIRGINIA
DEPARTMENT OF ENVIRONMENTAL SERVICES

WATERLINE PLAN AND PROFILES - CONNECTIONS
COLUMBIA PIKE - ROUTE 244
COLUMBIA PIKE - MULTIMODAL STREET IMPROVEMENTS
SEGMENT F

SCALE: HOR. 1" = 25' VERT. 1" = 5' SHEET: F13.7 of F13.10



WATERLINE RESTRAINT LENGTHS												
Station	Fitting Type	Pipe Material	Depth of Bury (ft)	Nominal Size (in)	Bend Angle	Branch Size (in)	Length Along Run (ft)	Reduced Size (in)	Lowside Depth (ft)	Restraint Length	Restraint Length 2	
Waterline 1												
135+16.21	Tee	Ductile Iron	4	12		8	5			27 ft.		
135+19.21	Vertical Offset	Ductile Iron	4	12	45				7	34 ft.	9 ft.	
135+28.32	Horizontal Bend	Ductile Iron	7	12	45					9 ft.		
135+36.09	Horizontal Bend	Ductile Iron	7	12	45					9 ft.		
139+35.90	Tee	Ductile Iron	4	12		8	20			1 ft.		
142+94.68	Horizontal Bend	Ductile Iron	4	12	45					15 ft.		
143+03.93	Horizontal Bend	Ductile Iron	4	12	45					15 ft.		
144+22.02	Tee	Ductile Iron	4	12		12	20			1 ft.		
144+41.36	Vertical Offset	Ductile Iron	4	12	45				9	34 ft.	7 ft.	
147+73.50	Tee	Ductile Iron	4	12		8	5			27 ft.		
148+52.95	Tee	Ductile Iron	5	12		8	5			16 ft.		
151+86.07	Tee	Ductile Iron	4	12		8	20			1 ft.		
151+88.62	Vertical Offset	Ductile Iron	4	12	45				6	34 ft.	10 ft.	
152+32.27	Tee	Ductile Iron	4	12		8	20			1 ft.		
152+87.84	Horizontal Bend	Ductile Iron	4	12	45					15 ft.		
152+67.85	Vertical Offset	Ductile Iron	4	12	22.5				6	17 ft.	5 ft.	
153+05.09	Horizontal Bend	Ductile Iron	4	12	45					15 ft.		
153+27.11	Tee	Ductile Iron	4	12		6	20			1 ft.		
156+10.25	Tee	Ductile Iron	4	12		6	20			1 ft.		
157+48.44	Tee	Ductile Iron	4	12		6	20			1 ft.		
158+40.79	Horizontal Bend	Ductile Iron	4	12	45					15 ft.		
158+47.53	Horizontal Bend	Ductile Iron	4	12	45					15 ft.		
Waterline 1.2												
139+35.90	Tee	Ductile Iron	4	8		12	20			28 ft.		
139+35.81	Horizontal Bend	Ductile Iron	4	8	45					11 ft.		
139+28.05	Horizontal Bend	Ductile Iron	4	8	45					11 ft.		
139+28.05	Reducer	Ductile Iron	4	8				6		24 ft.		
Waterline 1.4												
144+02.89	Horizontal Bend	Ductile Iron	3	12	45					19 ft.		
144+21.15	Horizontal Bend	Ductile Iron	3	12	45					19 ft.		
144+21.08	Tee	Ductile Iron	2.5	12		6	20			1 ft.		
144+22.02	Tee	Ductile Iron	3	12		12	20			23 ft.		
144+22.03	Horizontal Bend	Ductile Iron	3	12	45					19 ft.		
144+15.70	Horizontal Bend	Ductile Iron	3	12	45					19 ft.		
Waterline 1.5												
147+73.50	Tee	Ductile Iron	4	8		12	20			28 ft.		
147+73.45	Vertical Offset	Ductile Iron	4	8	45				7	24 ft.	6 ft.	
147+73.38	Tee	Ductile Iron	4	8		6	8			2 ft.		
147+73.38	Tee	Ductile Iron	4	6		6	8			12 ft.		
Waterline 1.6												
148+52.95	Tee	Ductile Iron	5	8		12	20			13 ft.		
Waterline 1.7												
151+86.07	Tee	Ductile Iron	5	8		12	8			45 ft.		
151+86.07	Horizontal Bend	Ductile Iron	6	8	22.5					4 ft.		
151+99.88	Tee	Ductile Iron	5	8		8	3			35 ft.		
152+02.24	Horizontal Bend	Ductile Iron	5	8	90					20 ft.		
Waterline 1.8												
152+32.27	Tee	Ductile Iron	5	8		12	9			42 ft.		
152+32.27	Horizontal Bend	Ductile Iron	4	8	11.25					3 ft.		
152+29.96	Vertical Offset Sym Return	Ductile Iron	4	8	45				7	24 ft.	6 ft.	
Waterline 1.9												
153+27.11	Tee	Ductile Iron	4	6		12	16			49 ft.		
153+27.11	Dead End	Ductile Iron	3.5	6						82 ft.		
Waterline 1.10												
156+10.25	Tee	Ductile Iron	3.5	6		12	20			51 ft.		
156+10.26	Dead End	Ductile Iron	4	6						44 ft.		
Waterline 1.11												
157+48.44	Tee	Ductile Iron	3.5	6		12	20			51 ft.		
157+48.44	Dead End	Ductile Iron	3.5	6						49 ft.		
Waterline 2												
158+85.44	Tee	Ductile Iron	3.5	6		12	20			51 ft.		
159+11.70	Dead End	Ductile Iron	4	6						44 ft.		

Local Review Program – Project Report				
Project Name:	Columbia Pike, Segment F			
Building Type:	N/A			
Office	N/A	sq. ft.		
Retail	N/A	sq. ft.		
Residential	N/A	number of units		
Hotel	N/A	number of units		
Other (type:)	N/A	sq. ft.		
Water Main				
New pipe information (excluding Fireline length)				
Length of water main by size	Size: 3/4"	Length: 253'		
	Size: 6"	Length: 274'		
	Size: 8"	Length: 544'		
	Size: 12"	Length: 2636'		
New Fire Hydrants	Number: 8			
Blow-offs	Number: 48			
Abandoned pipe and appurtenance information				
Length of water main by size	Size: 6	Length: 1104'		
	Size: 8	Length: 3013'		
	Size: 12	Length: 847'		
Fire Hydrants	Number: 6			
Blow-offs	Number: 38			
Water Meters and Connections				
Residential (sfd)	Number:	Size:		
Multi-family	Number: 4	Size: 2", 3"		
Commercial	Number: 1	Size: 3/4"		
Institutional	Number:	Size:		
Industrial	Number:	Size:		
Irrigation	Number:	Size:		
Fireline (Connections)	Number:	Size:		
Other (type:)	Number:	Size:		
Sanitary Sewer Main				
New pipe information				
Length of sanitary sewer by size	Size: 8" PVC	Length: 0'		
	Size: 8" DIP	Length: 647'		
	Size: 12" DIP	Length: 2262'		
Number of MHs	Number: 23			
Abandoned pipe information				
Length of sanitary sewer by size	Size: 4" DIP	Length: 20'		
	Size: 8" DIP	Length: 2374'		
	Size: 6" PVC	Length: 11'		
	Size: 8" PVC	Length: 41'		
	Size: 12" PVC	Length: 37'		
	Size: 21" RCP	Length: 56'		
Number of MHs	Number: 16			
Interceptor Information				
Type:	Grease	Sand/oil:		
		Both:		
Location:	Inside:	Outside:		
Size:	Size:			
New Bldg:	Yes	No		
Retrofit:	Yes	No		



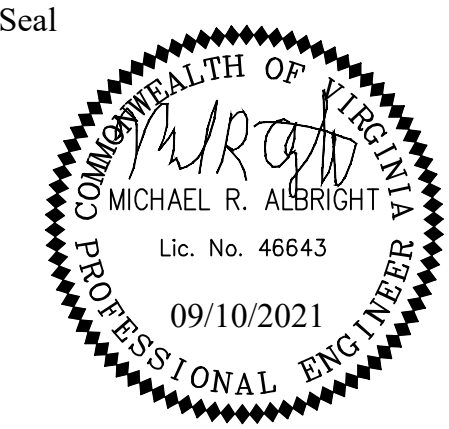
DEPARTMENT OF ENVIRONMENTAL SERVICES

Facilities & Engineering Division
Engineering Bureau
2100 Clarendon Boulevard, Suite 813
Arlington, VA 22201
Phone: 703.228.3629
Fax: 703.228.3606

Kimley»Horn

Kimley-Horn
and Associates, Inc.

© 2021 KIMLEY-HORN AND ASSOCIATES, INC.
11400 Commerce Park Drive, Suite 400
Reston, Virginia 20191
Phone: 703-874-1500
Fax: 703-874-1500



Approvals _____ Date _____

Design Team Engineer Supervisor _____

Construction Management Supervisor _____

Water, Sewer, Streets Bureau Chief _____

Transportation Director _____

Project Manager _____

Revisions	Date

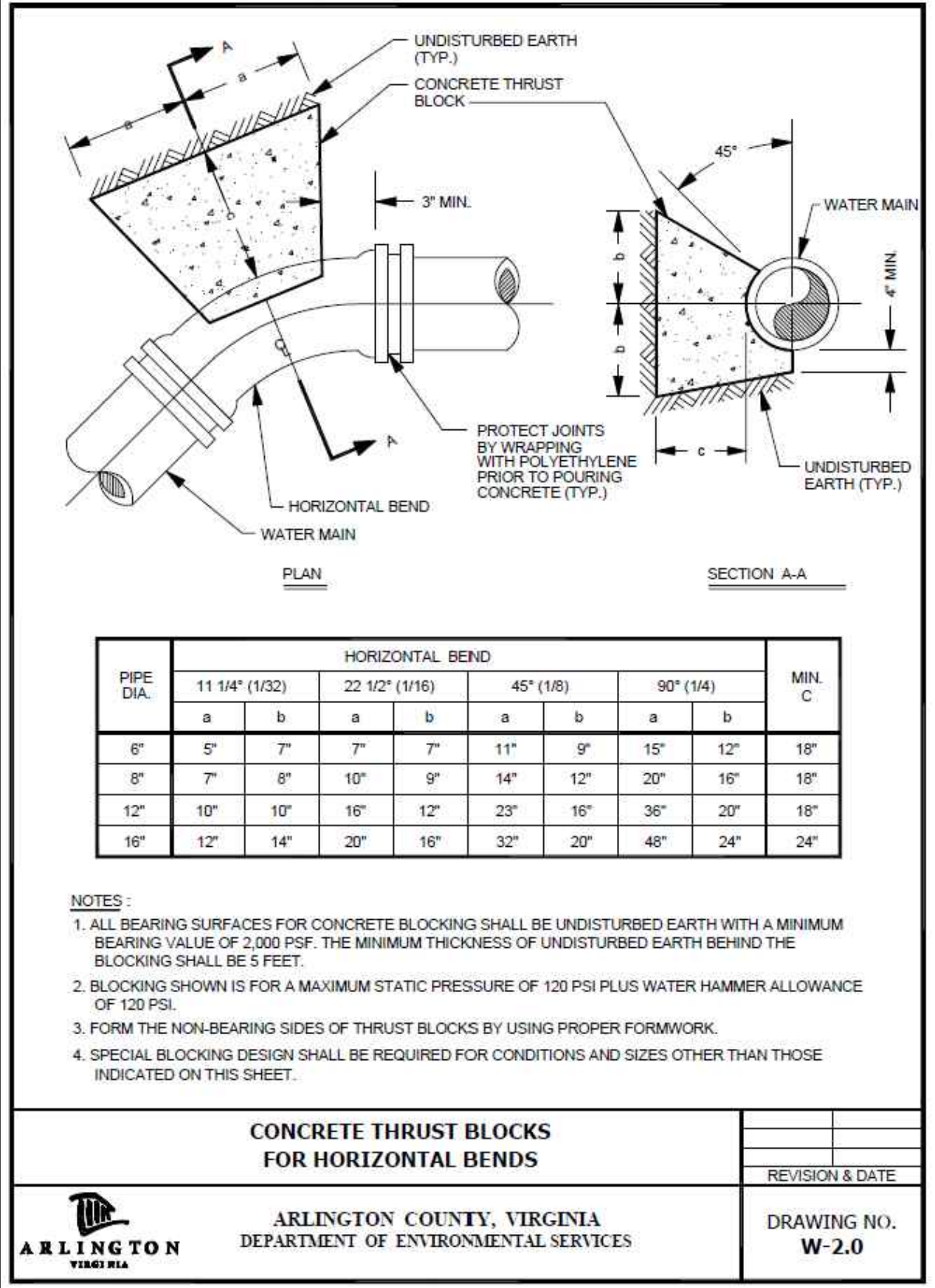
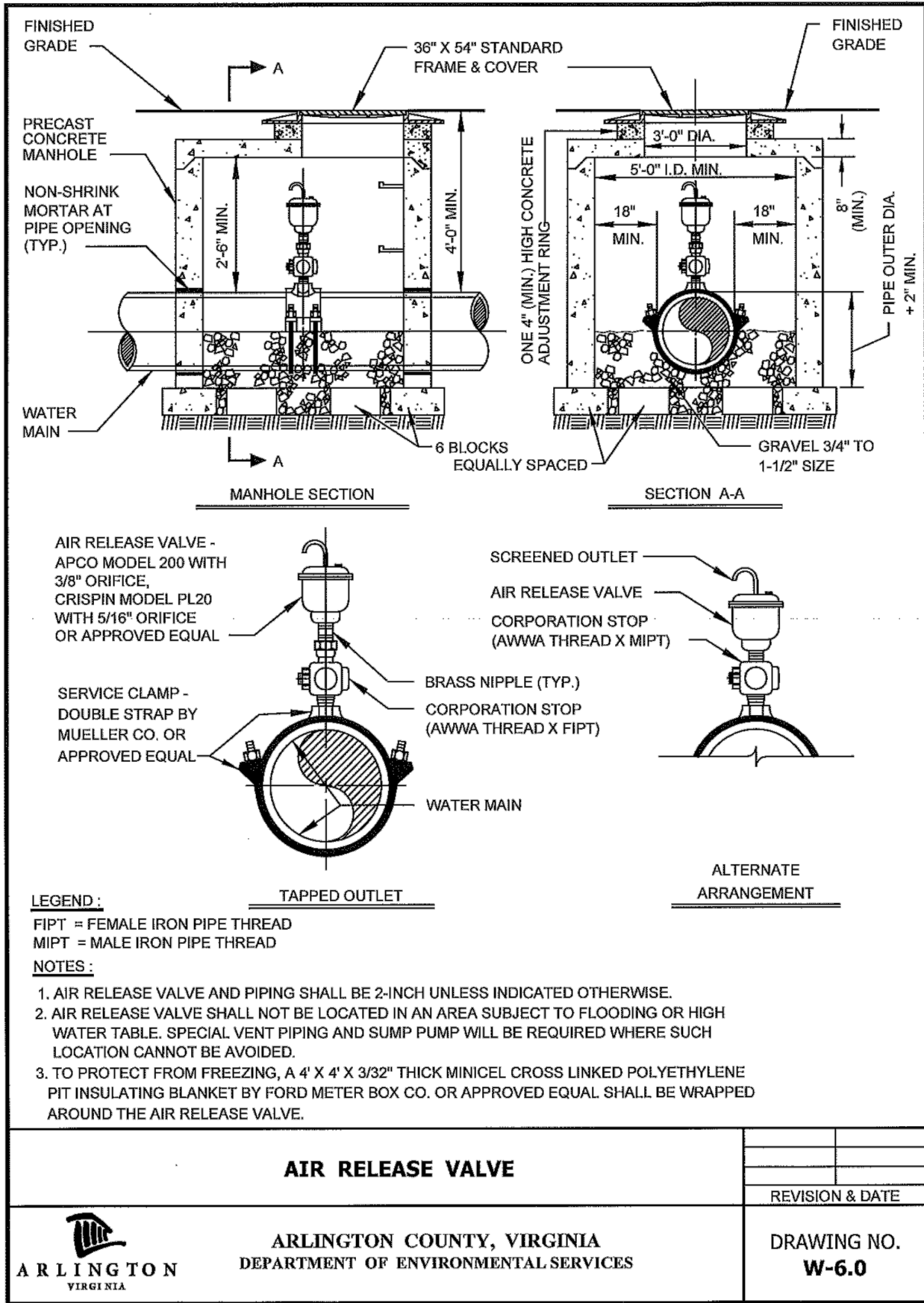
Designed: KF
Drawn: KF
Checked: MA
Miss Utility Transmittal #:

Filename: 010073-F-WATR.dwg
Path: \\2-Final-Design-Columbia-Pike-Segment-F\2-100%
Design\PlatSheet
Plotted: September 10, 2021
Plotted by: Patrick.Husted

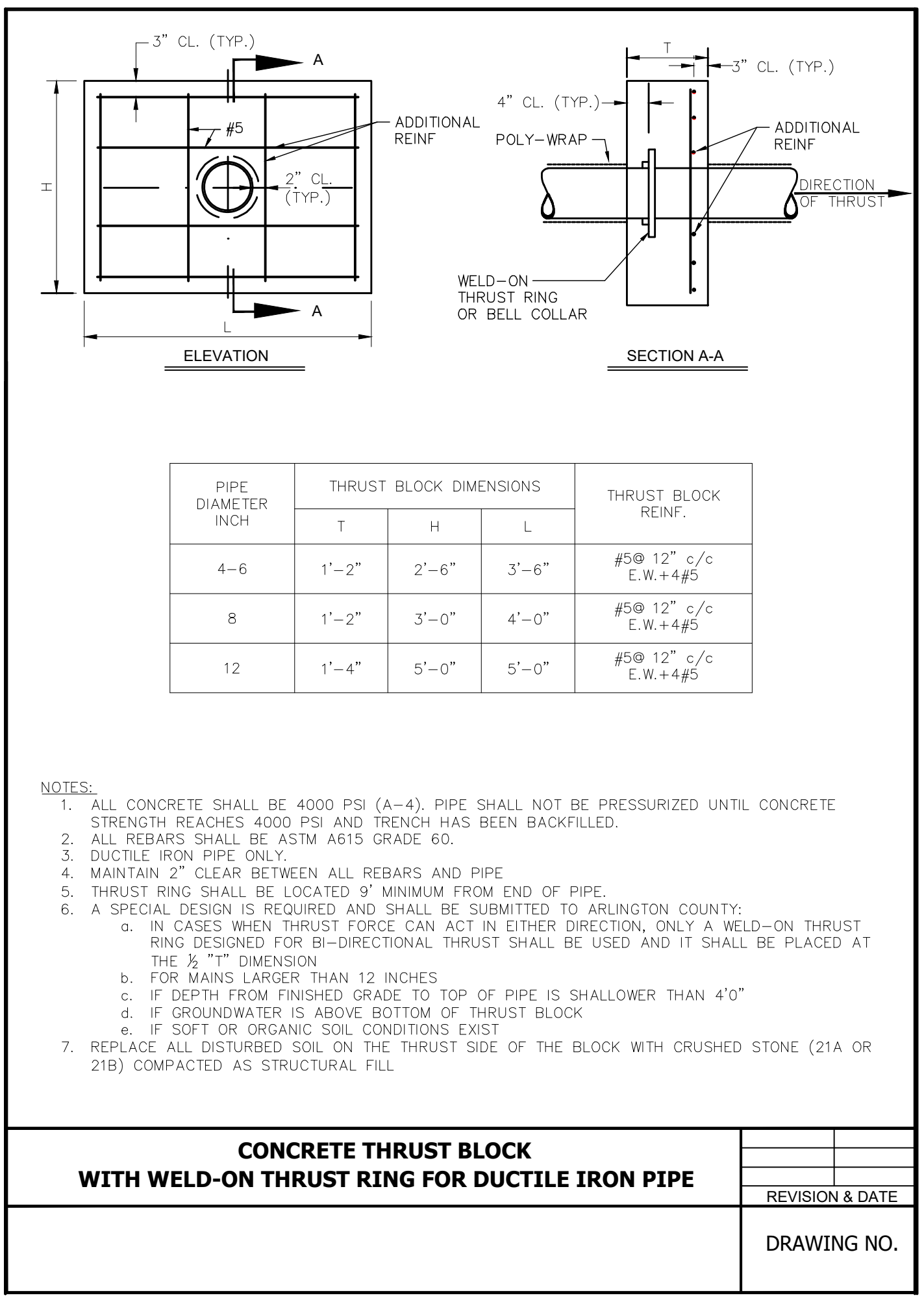
ARLINGTON COUNTY, VIRGINIA
DEPARTMENT OF ENVIRONMENTAL SERVICES

WATERLINE PLAN AND PROFILES - RESTRAINT LENGTHS
COLUMBIA PIKE - ROUTE 244
COLUMBIA PIKE - MULTIMODAL STREET IMPROVEMENTS
SEGMENT F

SCALE: HOR. 1" = 25' VERT. 1" = 5' SHEET: F13.9 of F13.10



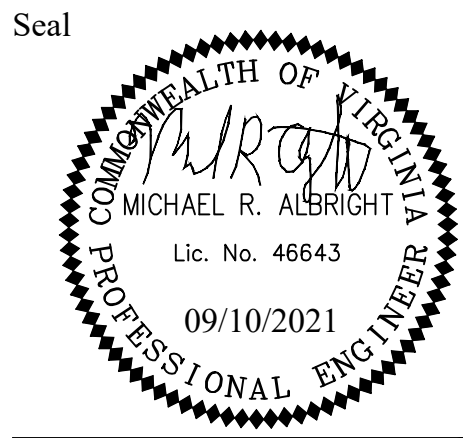
NOTES: ARLINGTON COUNTY PREFERS TIE RODS TO BE INSTALLED FROM THE TEE TO THE FITTING THAT TURNS UP TO THE FIRE HYDRANT REGARDLESS OF LENGTH PER ARLINGTON COUNTY STANDARDS. AN ACCEPTABLE ALTERNATIVE IS TO INSTALL TIE RODS BETWEEN THE TEE ON THE MAIN AND THE VALVE, THEN INSTALL MEGA-LUGS BETWEEN THE VALVE AND THE FITTING THAT TURNS UP TO THE FIRE HYDRANT. IF THIS ALTERNATE METHOD IS USED FOR FIRE HYDRANT INSTALLATIONS, THRUST BLOCKS ARE REQUIRED 1) BEHIND THE TEE AT THE MAIN, AND 2) BEHIND THE FITTING TURNING UP AT THE HYDRANT PER ARLINGTON STANDARDS.



DEPARTMENT OF ENVIRONMENTAL SERVICES

Facilities & Engineering Division
Engineering Bureau
2100 Clarendon Boulevard, Suite 813
Arlington, VA 22201
Phone: 703.228.3629
Fax: 703.228.3606

Kimley»Horn
Kimley-Horn
and Associates, Inc.
© 2021 KIMLEY-HORN AND ASSOCIATES, INC.
11400 Commerce Park Drive, Suite 400
Reston, Virginia 20191
Phone: 703-674-1500
Fax: 703-674-1500



Approvals Date

Design Team Engineer Supervisor

Construction Management Supervisor

Water, Sewer, Streets Bureau Chief

Transportation Director

Project Manager

Revisions	Date

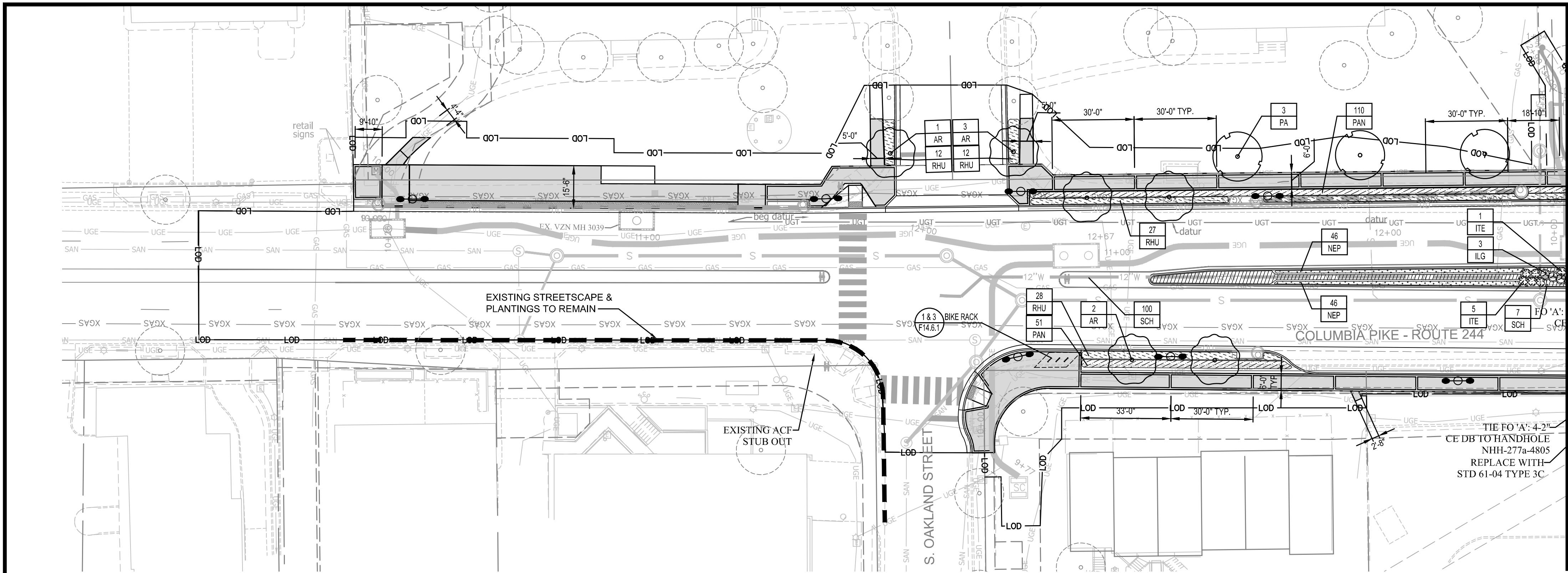
Designed: KF
Drawn: DB
Checked: EJD
Miss Utility Transmittal #:

Filename: 010073-F-WATR.dwg
Path: C:\Users\KIMLEY\OneDrive\Documents\Projects\010073-F-WATR\010073-F-WATR.dwg
Plotted: September 10, 2021
Plotted by: patrick.husted

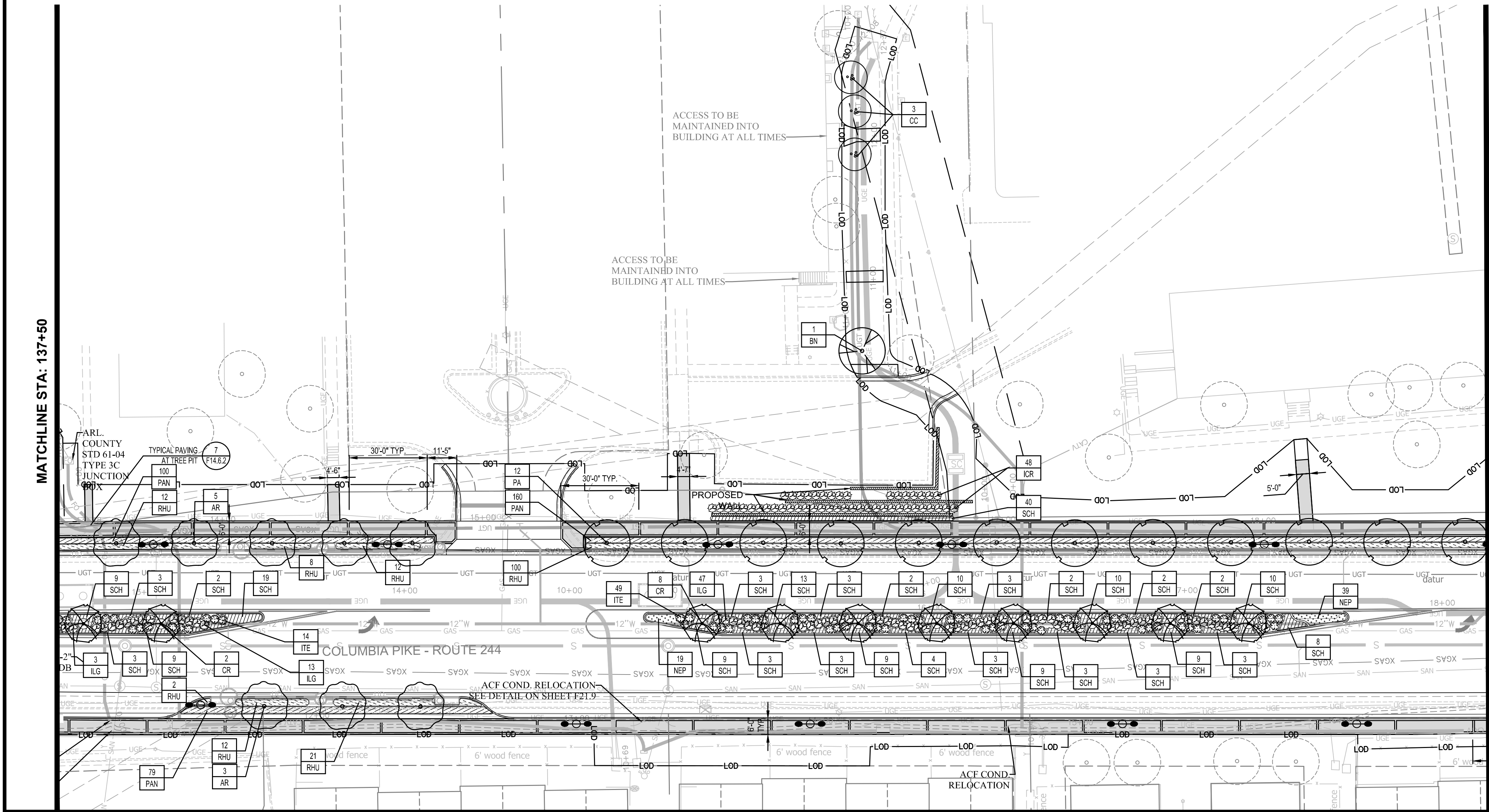
ARLINGTON COUNTY, VIRGINIA
DEPARTMENT OF ENVIRONMENTAL SERVICES

WATERLINE PLAN AND PROFILES - DETAILS
COLUMBIA PIKE - ROUTE 244
COLUMBIA PIKE - MULTIMODAL STREET IMPROVEMENTS
SEGMENT F

SCALE: HOR. 1" = 25' VERT. 1" = 5' SHEET: F13.10 of F13.10



MATCHLINE STA: 137+50



MATCHLINE STA: 143+00 - SEE SHEET F14.2

LANDSCAPE LEGEND

CANOPY TREES

AR *Acer rubrum* 'Armstrong'

BN *Betula Nigra*

GT *Gleditsia triacanthos f. inermis* 'Skyline'

NS *Nyssa sylvatica*

PA *Platanus x acerifolia*

QA *Quercus palustris*

QP *Quercus phellos*

TA *Tilia americana*

ORNAMENTAL TREES

CC *Cercis canadensis*

CR *Crataegus viridis* 'Winter King'

SHRUBS & GRASSES

ICR *Ilex cornuta* 'Rotunda'

ILG *Ilex glabra*

ITE *Itea virginica*

SCH *Schizachyrium scoparium*

PAN *Panicum virgatum* 'Shenandoah'

SCH *Schizachyrium scoparium*

PERENNIALS & GROUNDCOVERS

NEP *Nepeta x faassenii*

RHU *Rhus aromatica* 'Gro-Low'

HARDSCAPE LEGEND

PROPOSED CONCRETE WALK

PROPOSED UNIT PAVER BANDING

PROPOSED LIGHTING LOCATION

HARDSCAPE NOTES:

1. SEE SHEET F14.6.2 & SHEET F14.6.3 FOR HARDSCAPE DETAILS & TYPICAL PAVING LAYOUTS

PLANTING LEGEND

PROPOSED STREET TREE (TYPICAL)

EXISTING STREETScape TO REMAIN

PROPOSED SHRUB AND/OR GROUNDCOVER (TYPICAL)

LANDSCAPE NOTES:

1. CONTRACTOR SHALL CALL MISS UTILITY OF VIRGINIA AT 800-552-7001. ALL UTILITIES MUST BE LOCATED PRIOR TO THE START OF CONSTRUCTION.

2. SEE SHEET F14.5 & SHEET F14.6.4 FOR PLANTING DETAILS AND SHEET F14.7 FOR OVERALL PLANT TABLE / TOTALS

3. SEE SHEET F15.7 - SHEET F15.13 FOR LIGHTING LAYOUT

GRAPHIC SCALE IN FEET

0 12.5 25 50

(HORIZONTAL SCALE)

ARLINGTON VIRGINIA

DEPARTMENT OF ENVIRONMENTAL SERVICES

Facilities & Engineering Division
Engineering Bureau
2100 Clarendon Boulevard, Suite 813
Arlington, VA 22201
Phone: 703.228.3629
Fax: 703.228.3606

Kimley»Horn
Kimley-Horn
and Associates, Inc.

© 2021 KIMLEY-HORN AND ASSOCIATES, INC.
11400 Commerce Park Drive, Suite 400
Reston, Virginia 20191
Phone: 703-674-1500
Fax: 703-674-1500

Seal

COMMONWEALTH OF VIRGINIA
MICHAEL R. ALBRIGHT
Lic. No. 46643
09/10/2021
PROFESSIONAL ENGINEER

Approvals _____ Date _____

Design Team Engineer Supervisor _____

Construction Management Supervisor _____

Water, Sewer, Streets Bureau Chief _____

Transportation Director _____

Project Manager _____

Revisions _____ Date _____

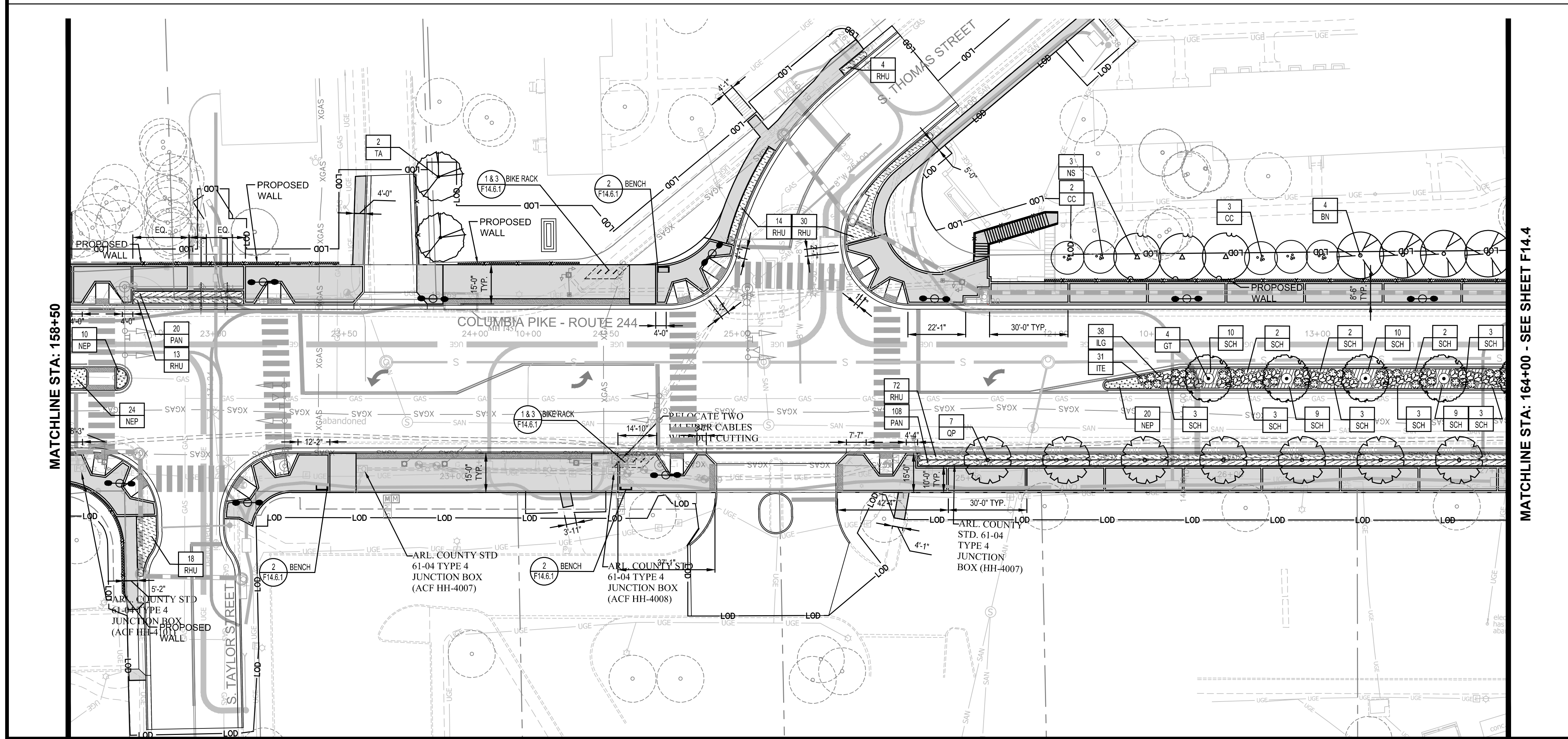
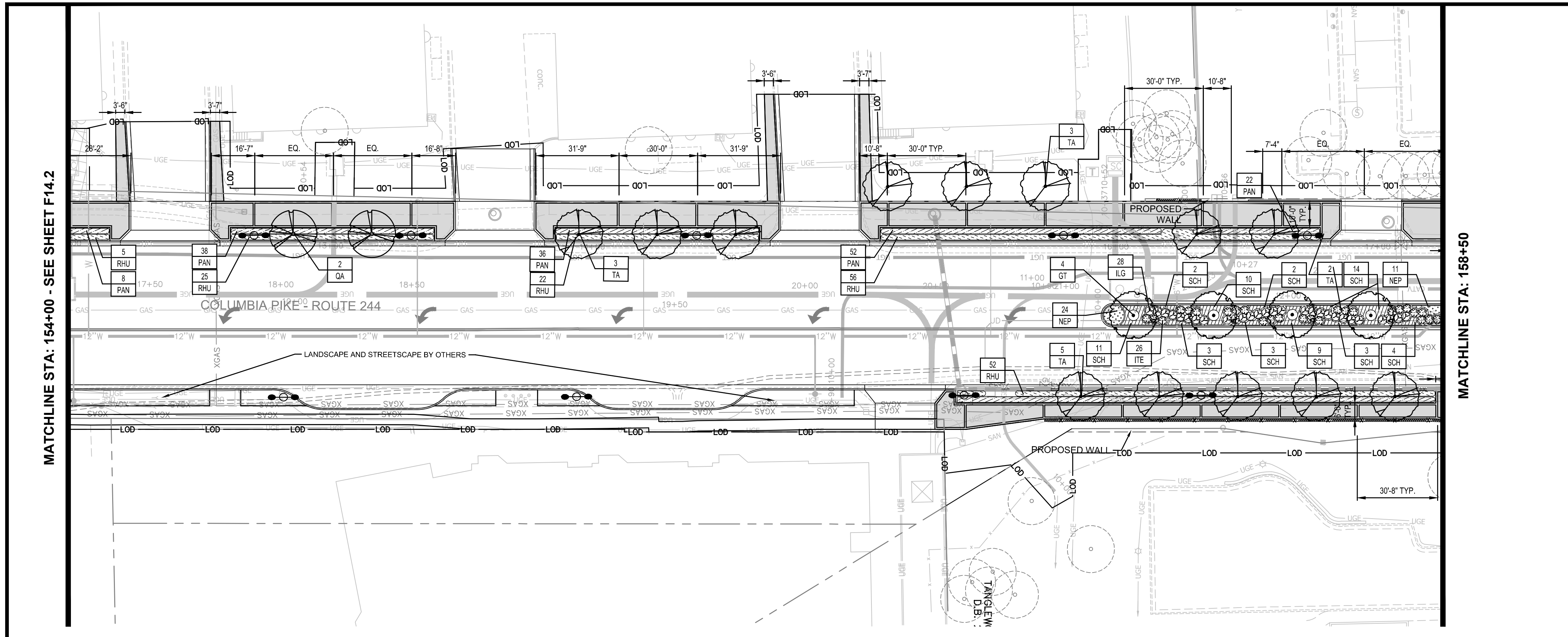
Designed: KWA
Drawn: WDW
Checked: KWA
Miss Utility Transmittal #:

Filename: 010073-F-LAND.dwg
Path: C:\Users\KWA\OneDrive\Documents\Projects\010073-F-LAND.dwg
Plotted: September 10, 2021
Plotted by: Patrick.Husted

ARLINGTON COUNTY, VIRGINIA
DEPARTMENT OF ENVIRONMENTAL SERVICES

LANDSCAPE CONSERVATION PLAN
COLUMBIA PIKE - ROUTE 244
COLUMBIA PIKE - MULTIMODAL STREET IMPROVEMENTS
SEGMENT F
STA. 133+00 TO STA. 143+00

SCALE: HOR. 1" = 25' VERT. N/A SHEET: F14.1 of F14.10.3



LANDSCAPE LEGEND

CANOPY TREES

AR *Acer rubrum* 'Armstrong'

BN *Betula Nigra*

GT *Gleditsia triacanthos f. inermis* 'Skyline'

NS *Nyssa sylvatica*

PA *Platanus x acerifolia*

QA *Quercus palustris*

QP *Quercus phellos*

TA *Tilia americana*

ORNAMENTAL TREES

CC *Cercis canadensis*

CR *Crataegus viridis* 'Winter King'

SHRUBS & GRASSES

ICR *Ilex cornuta* 'Rotunda'

ILG *Ilex glabra*

ITE *Itea virginica*

SCH *Schizachyrium scoparium*

PAN *Panicum virgatum* 'Shenandoah'

SCH *Schizachyrium scoparium*

PERENNIALS & GROUNDCOVERS

NEP *Nepeta x faassenii*

RHU *Rhus aromatica* 'Gro-Low'

HARDSCAPE LEGEND

PROPOSED CONCRETE WALK

PROPOSED UNIT PAVER BANDING

PROPOSED LIGHTING LOCATION

HARDSCAPE NOTES:

- SEE SHEET F14.6.2 & SHEET F14.6.3 FOR HARDSCAPE DETAILS & TYPICAL PAVING LAYOUTS

PLANTING LEGEND

PROPOSED STREET TREE (TYPICAL)

EXISTING STREETScape TO REMAIN

PROPOSED SHRUB AND/OR GROUNDcover (TYPICAL)

LANDSCAPE NOTES:

- CONTRACTOR SHALL CALL MISS UTILITY OF VIRGINIA AT 800-552-7001. ALL UTILITIES MUST BE LOCATED PRIOR TO THE START OF CONSTRUCTION.
- SEE SHEET F14.5 & SHEET F14.6.4 FOR PLANTING DETAILS AND SHEET F14.7 FOR OVERALL PLANT TABLE / TOTALS
- SEE SHEET F15.7 - SHEET F15.13 FOR LIGHTING LAYOUT

GRAPHIC SCALE IN FEET

(HORIZONTAL SCALE)

ARLINGTON COUNTY, VIRGINIA
DEPARTMENT OF ENVIRONMENTAL SERVICES

LANDSCAPE CONSERVATION PLAN
COLUMBIA PIKE - ROUTE 244
COLUMBIA PIKE - MULTIMODAL STREET IMPROVEMENTS
SEGMENT F
STA. 153+25 TO STA. 164+00

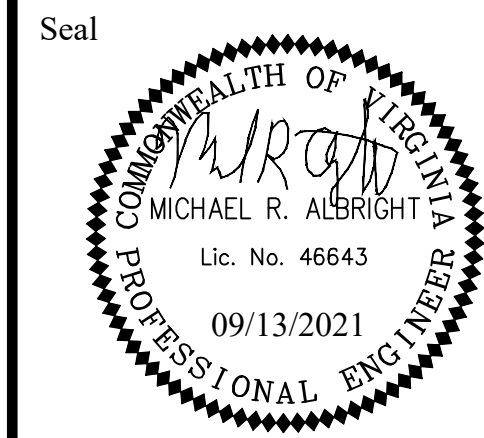
SCALE: HOR. 1" = 25' VERT. N/A SHEET: F14.3 of F14.10.3



DEPARTMENT OF ENVIRONMENTAL SERVICES

Facilities & Engineering Division
Engineering Bureau
2100 Clarendon Boulevard, Suite 813
Arlington, VA 22201
Phone: 703.228.3629
Fax: 703.228.3606

Kimley»Horn
Kimley-Horn
and Associates, Inc.
© 2021 KIMLEY-HORN AND ASSOCIATES, INC.
11400 Commerce Park Drive, Suite 400
Reston, Virginia 20191
Phone: 703-674-1500
Fax: 703-674-1500



Approvals Date

Design Team Engineer Supervisor

Construction Management Supervisor

Water, Sewer, Streets Bureau Chief

Transportation Director

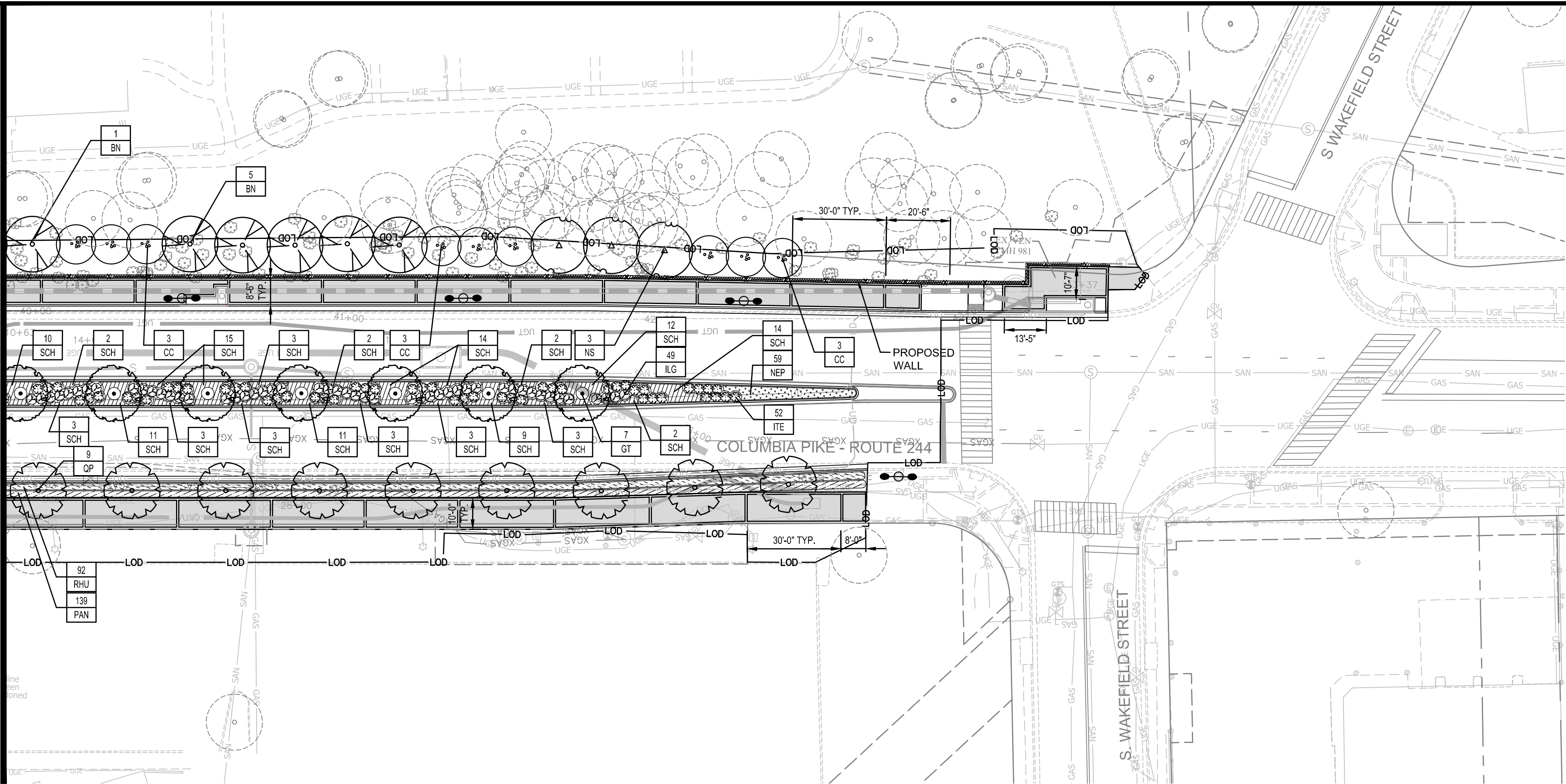
Project Manager

Revisions	Date

Designed: KWA
Drawn: WDW
Checked: KWA
Miss Utility Transmittal #:

Filename: 010073-F-LAND.dwg
Path: Z:\Projects\010073-F-LAND.dwg
Plotted: September 13, 2021
Plotted by: Ted.DeLio

MATCHLINE STA: 164+00 - SEE SHEET F14.3



LANDSCAPE LEGEND

CANOPY TREES

AR *Acer rubrum* 'Armstrong'

BN *Betula Nigra*

GT *Gleditsia triacanthos f. inermis* 'Skyline'

NS *Nyssa sylvatica*

PA *Platanus x acerifolia*

QA *Quercus palustris*

QP *Quercus phellos*

TA *Tilia americana*

ORNAMENTAL TREES

CC *Cercis canadensis*

CR *Crataegus viridis* 'Winter King'

SHRUBS & GRASSES

ICR *Ilex cornuta* 'Rotunda'

ILG *Ilex glabra*

ITE *Itea virginica*

SCH *Schizachyrium scoparium*

PAN *Panicum virgatum* 'Shenandoah'

SCH *Schizachyrium scoparium*

PERENNIALS & GROUNDCOVERS

NEP *Nepeta x faassenii*

RHU *Rhus aromatica* 'Gro-Low'

HARDSCAPE LEGEND

PROPOSED CONCRETE WALK

PROPOSED UNIT PAVER BANDING

PROPOSED LIGHTING LOCATION

HARDSCAPE NOTES:

1. SEE SHEET F14.6.2 & SHEET F14.6.3 FOR HARDSCAPE DETAILS & TYPICAL PAVING LAYOUTS

PLANTING LEGEND

PROPOSED STREET TREE (TYPICAL)

EXISTING STREETScape TO REMAIN

PROPOSED SHRUB AND/OR GROUNDcover (TYPICAL)

LANDSCAPE NOTES:

1. CONTRACTOR SHALL CALL MISS UTILITY OF VIRGINIA AT 800-552-7001. ALL UTILITIES MUST BE LOCATED PRIOR TO THE START OF CONSTRUCTION.

2. SEE SHEET F14.5 & SHEET F14.6.4 FOR PLANTING DETAILS AND SHEET F14.7 FOR OVERALL PLANT TABLE / TOTALS

3. SEE SHEET F15.7 - SHEET F15.13 FOR LIGHTING LAYOUT

GRAPHIC SCALE IN FEET

0 12.5 25 50

(HORIZONTAL SCALE)

ARLINGTON VIRGINIA

DEPARTMENT OF ENVIRONMENTAL SERVICES

Facilities & Engineering Division
Engineering Bureau
2100 Clarendon Boulevard, Suite 813
Arlington, VA 22201
Phone: 703.228.3629
Fax: 703.228.3606

Kimley»Horn
Kimley-Horn
and Associates, Inc.
© 2021 KIMLEY-HORN AND ASSOCIATES, INC.
11400 Commerce Park Drive, Suite 400
Reston, Virginia 20191
Phone: 703-674-1500
Fax: 703-674-1500

Seal

COMMONWEALTH OF VIRGINIA
MICHAEL R. ALBRIGHT
Lic. No. 46643
09/10/2021
PROFESSIONAL ENGINEER

Approvals _____ Date _____

Design Team Engineer Supervisor _____

Construction Management Supervisor _____

Water, Sewer, Streets Bureau Chief _____

Transportation Director _____

Project Manager _____

Revisions	Date

Designed: KWA
Drawn: WDW
Checked: KWA
Miss Utility Transmittal #:

Filename: 010073-F-LAND.dwg
Path: \\S:\NA_KRM\Y110610073 Columbia Pike Multimodal\Production\Task
12 Final Design of Columbia Pike Segments\Segment F15.2 - 100%
Design\PlatSheet
Plotted: September 10, 2021
Plotted by: patrick.husted

ARLINGTON COUNTY, VIRGINIA
DEPARTMENT OF ENVIRONMENTAL SERVICES

LANDSCAPE CONSERVATION PLAN
COLUMBIA PIKE - ROUTE 244
COLUMBIA PIKE - MULTIMODAL STREET IMPROVEMENTS
SEGMENT F
STA. 164+00 TO STA. 169+00

SCALE: HOR. 1" = 25' VERT. N/A	SHEET: F14.4 of F14.10.3
--------------------------------	--------------------------

