

**REVIEW DRAWINGS**

Rev.	Date	Description

DRAWN BY: CMK  
 CHECKED BY: CMK  
 PROJECT NUMBER: 20007  
 DATE: 01/11/21

SHEET TITLE:  
**FLOOR PLAN**

SHEET NUMBER:  
**A1.1**

OVERALL AREA: 4,970 SF  
 ASSEMBLY: COURT SEATING: 726 SF  
 BUSINESS AREA: 4,244 SF

A: 104 OCCUPANTS  
 B: 29 OCCUPANTS  
 A: 143 OCCUPANTS

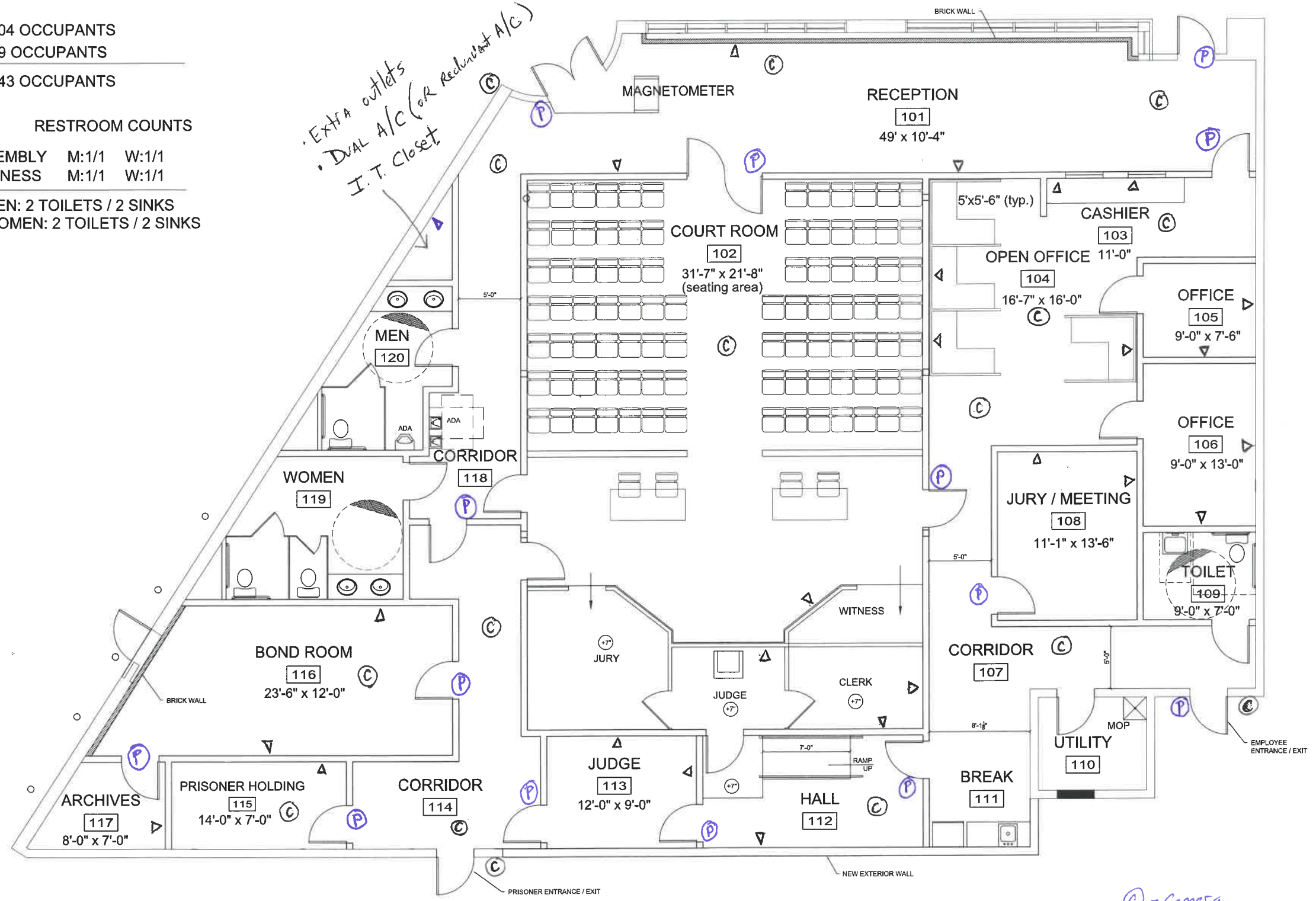
**RESTROOM COUNTS**

ASSEMBLY M:1/1 W:1/1  
 BUSINESS M:1/1 W:1/1

MEN: 2 TOILETS / 2 SINKS  
 WOMEN: 2 TOILETS / 2 SINKS

*Extra outlets  
 • DUAL A/C (or Redundant A/C)  
 I.T. Closet*

ALL LEGAL DRAWINGS OR REPRODUCTIONS DERIVED FROM THIS SHEET ARE PROPERTY OF KARPUS DESIGN, LLC. COPYRIGHT © 2007. ANY USE OR REPRODUCTION OF THESE DOCUMENTS WITHOUT EXPRESS PERMISSION OF KARPUS DESIGN, LLC IS STRICTLY PROHIBITED AND SUBJECT TO LEGAL ACTION. POSSESSION MAY FORM CONSTITUTE ACCEPTANCE OF THESE CONDITIONS.



Ⓒ - Camera  
 Ⓐ - DUAL DROP CAT 6  
 Ⓟ - Proximity Door Reader

**REVISED 01/11/21**

**A1 FLOOR PLAN**  
 SCALE: 1/4"=1'-0"