

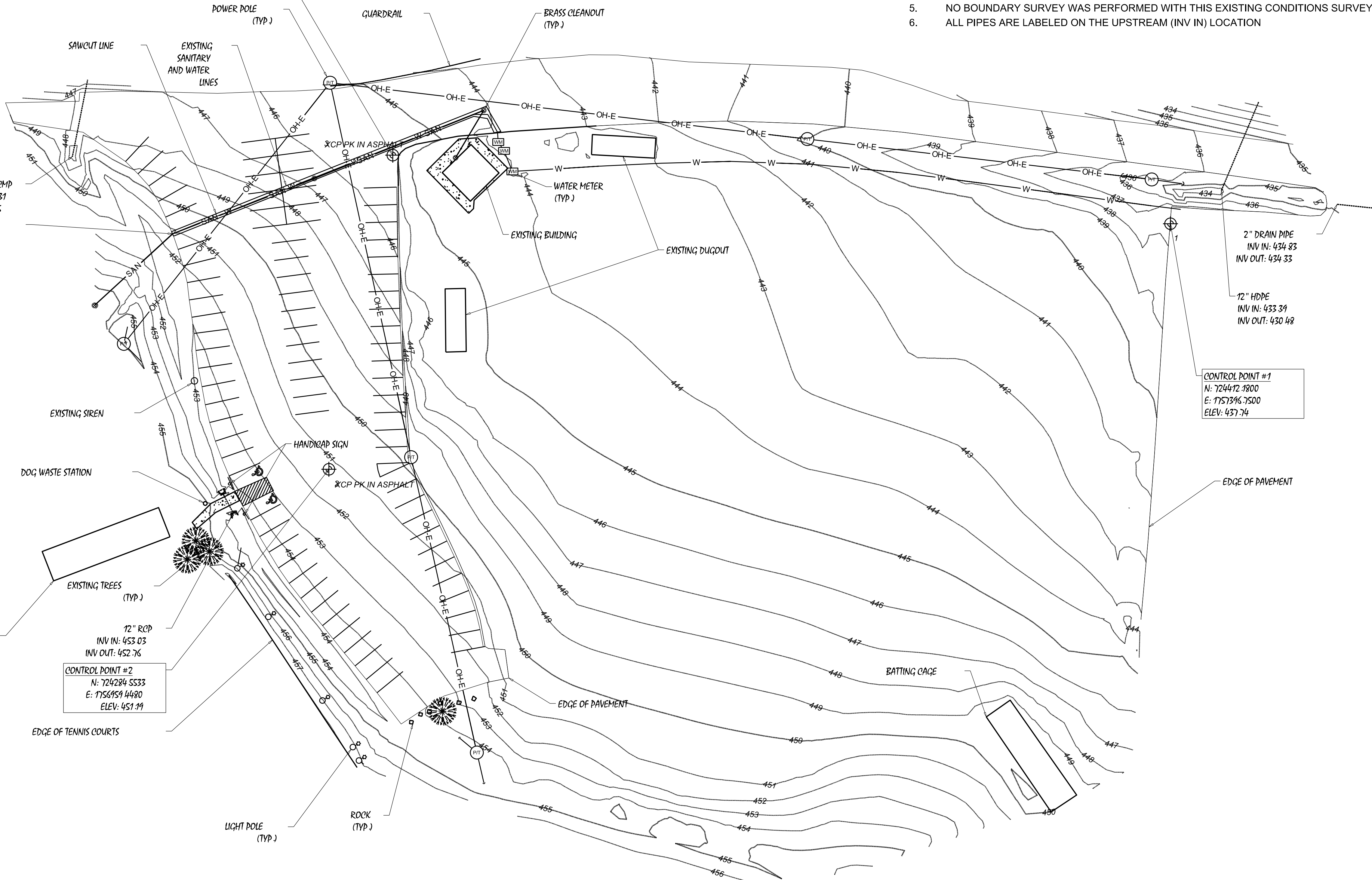


CONTROL POINT #3
 N: 724447.8334
 E: 1756992.6380
 ELEV: 445.17

GENERAL NOTES:

1. COORDINATES AND BEARINGS ARE BASED ON TENNESSEE STATE PLANE (NAD83).
2. EXISTING UTILITY LINES ARE SHOWN BASED ON CLEANOUTS, METERS AND DISCUSSIONS WITH CITY.
3. THE EXISTING CONDITIONS SURVEY WAS PERFORMED USING GPS, ROBOTIC, AND CONVENTIONAL EDM EQUIPMENT.
4. TREES SHOWN ARE THOSE WITH A DIAMETER OF 12" OR GREATER OR ORNAMENTAL TREES.
5. NO BOUNDARY SURVEY WAS PERFORMED WITH THIS EXISTING CONDITIONS SURVEY.
6. ALL PIPES ARE LABELED ON THE UPSTREAM (INV IN) LOCATION

30" CMP
 INV IN: 446.31
 INV OUT: 445.05
 SANITARY SEWER AND
 WATER LINE LOCATIONS
 BASED ON CLEANOUTS,
 METERS AND DISCUSSIONS
 WITH CITY PERSONNEL



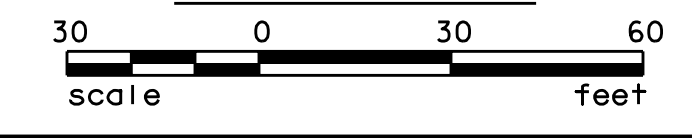
2" DRAIN PIPE
 INV IN: 434.83
 INV OUT: 434.33
 12" HDPE
 INV IN: 433.31
 INV OUT: 430.48

CONTROL POINT #1
 N: 724472.1800
 E: 1757396.7500
 ELEV: 437.74

72" RCP
 INV IN: 453.03
 INV OUT: 452.76
 CONTROL POINT #2
 N: 724284.5533
 E: 1756959.4480
 ELEV: 451.19

- ⊕ CONTROL POINT #1
 N: 724412.1800
 E: 1757396.7500
 ELEV: 437.74
- ⊕ CONTROL POINT #2
 N: 724284.5533
 E: 1756959.4480
 ELEV: 451.19
- ⊕ CONTROL POINT #3
 N: 724447.8334
 E: 1756992.6380
 ELEV: 445.17

SITE SURVEY



DATE	01-13-2019
REVISIONS	
REVISED AFTER BID	
DATE:	JANUARY 2019
DRAWN BY:	PRICE
CHECKED BY:	PRICE
APPROVED BY:	PRICE

SITE SURVEY
 PEAY PARK SPLASH PAD
 CITY OF GOODLETTSVILLE
 DAVIDSON COUNTY, TENNESSEE

SHEET NO.
C1.0