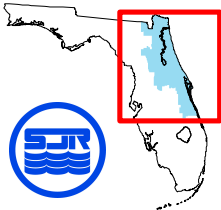


**St. Johns River Water Management District  
Mowing Regions**



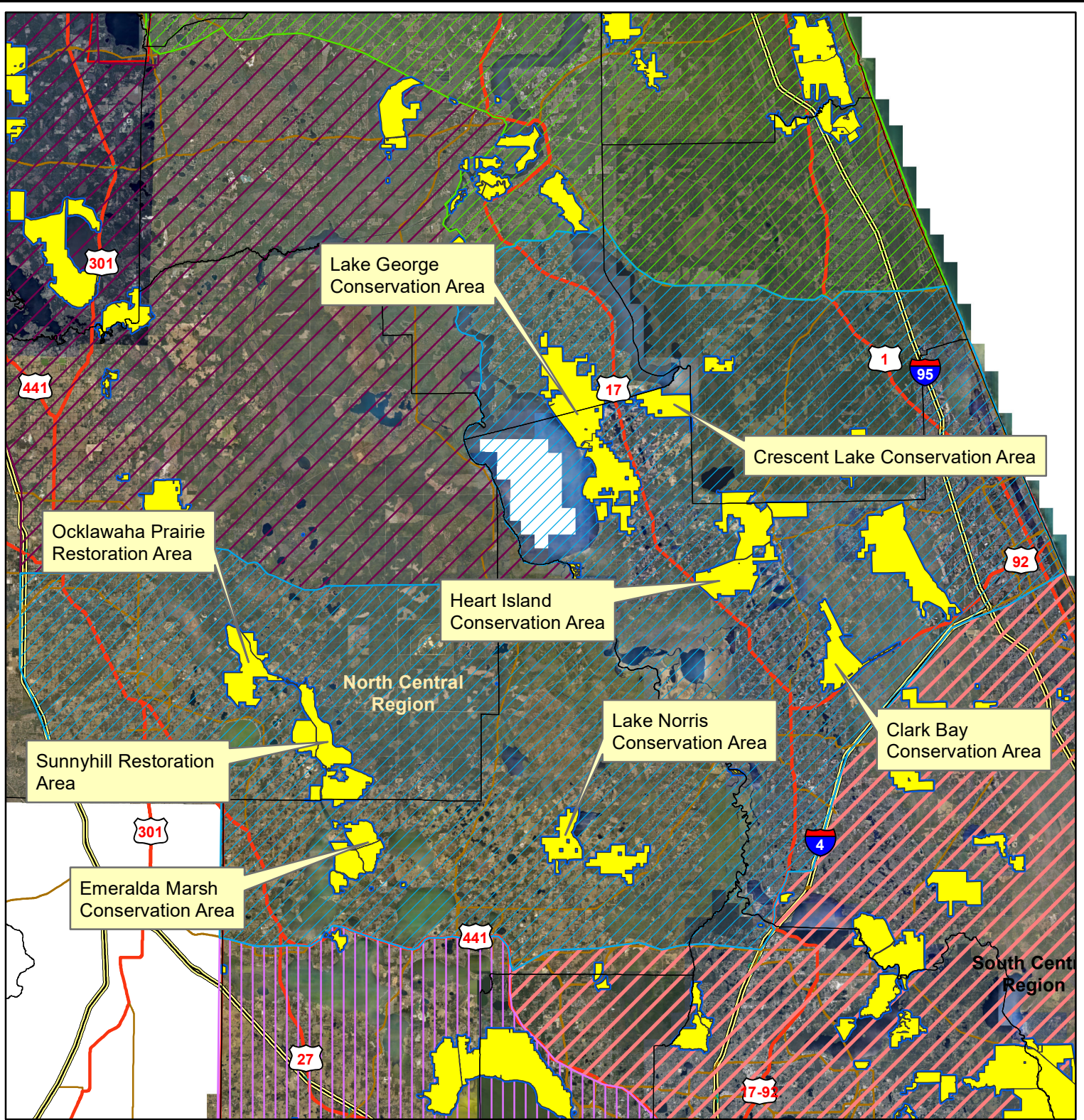
70                      35                      0                      70 Miles



1 = 1800000

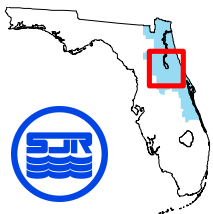






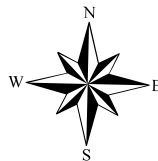
## St. Johns River Water Management District

### North Central Region - Properties



10 5 0 10 Miles

1 = 600000



#### North Central Region Counties

- Marion County
- Lake County
- Volusia County
- Flagler County
- Putnam County

## Clark Bay Conservation Area

### Service Mowing Locations

Identifier	Type of Feature	Frequency	Description of Mowing Needs	Comments	Estimate of Sq. Footage	Estimated Number of Cuts per Year
CB-01	Parking	Modified Monthly	Open Area Mowing	Includes CB-02 & CB-03	19,000	9
CB-02	Gate	Modified Monthly	Standard Feature Mowing	Included in CB-01	0	9
CB-03	Gate	Modified Monthly	Standard Feature Mowing	Included in CB-01	0	9
CB-04	Sign	Modified Monthly	Standard Feature Mowing	N/A	150	9
CB-05	Kiosk	Modified Monthly	Standard Feature Mowing	N/A	120	9
CB-06	Gate	Modified Monthly	Standard Feature Mowing	N/A	220	9
<b>Total Square Footage:</b>					<b>19,490</b>	



**Heart Island Conservation Area  
Service Point Mowing Locations**

Identifier	Type of Feature	Frequency	Description of Mowing Needs	Comments	Estimate of Sq. Footage	Estimated Number of Cuts per Year
HI-01	Gate	Modified Monthly	Open Area Mowing	N/A	1,200	9
HI-02	Gate	Modified Monthly	Open Area Mowing	N/A	560	9
HI-03	Gate	Modified Monthly	Open Area Mowing	N/A	1,400	9
HI-04	Camp Site	Modified Monthly	Open Area Mowing	N/A	18,300	9
HI-05	Gate	Modified Monthly	Standard Feature Mowing	N/A	220	9
HI-06	Gate	Modified Monthly	Standard Feature Mowing	N/A	220	9
HI-07	Hiking Walkway	Modified Monthly	Standard Feature Mowing	N/A	80	9
HI-08	Parking	Modified Monthly	Open Area Mowing	Includes HI-09	40,000	9
HI-09	Sign	Modified Monthly	Standard Feature Mowing	Included in HI-08	0	9
HI-10	Gate	Modified Monthly	Standard Feature Mowing	Included in HI-08	0	9
HI-11	Kiosk	Modified Monthly	Open Area Mowing	N/A	650	9
HI-12	Gate	Modified Monthly	Standard Feature Mowing	Included in HI-08	0	9
HI-13	Gate	Modified Monthly	Open Area Mowing	N/A	850	9
HI-14	Building/ Shelter	Modified Monthly	Open Area Mowing	N/A	14,000	9
HI-15	Hiking Walkway	Modified Monthly	Standard Feature Mowing	N/A	80	9
HI-16	Gate	Modified Monthly	Open Area Mowing	N/A	1,200	9
HI-17	Gate	Modified Monthly	Open Area Mowing	N/A	1,000	9
HI-18	Gate	Modified Monthly	Open Area Mowing	N/A	2,500	9
HI-19	Bridge	Modified Monthly	Standard Feature Mowing	N/A	500	9
HI-20	Bridge	Modified Monthly	Standard Feature Mowing	N/A	500	9
HI-21	Parking	Modified Monthly	Open Area Mowing	Includes HI-22 & HI-23	130,680	9
HI-22	Kiosk	Modified Monthly	Standard Feature Mowing	Included in HI-21	0	9
HI-23	Gate	Modified Monthly	Standard Feature Mowing	Included in HI-21	0	9
HI-24	Sign	Modified Monthly	Standard Feature Mowing	Included in HI-21	0	9
HI-25	Gate	Modified Monthly	Open Area Mowing	N/A	4,800	9
HI-26	Telemetry Station	Modified Monthly	Open Area Mowing	N/A	1,200	9
HI-27	Gate	Modified Monthly	Open Area Mowing	N/A	4,400	9
HI-28	Gate	Modified Monthly	Open Area Mowing	N/A	3,000	9
HI-29	Gate	Modified Monthly	Standard Feature Mowing	N/A	220	9
HI-30	Gate	Modified Monthly	Standard Feature Mowing	N/A	220	9
HI-31	Gate	Modified Monthly	Standard Feature Mowing	N/A	220	9
HI-32	Bridge	Modified Monthly	Standard Feature Mowing	N/A	800	9
HI-33	Gate	Modified Monthly	Standard Feature Mowing	N/A	220	9
HI-34	Gate	Modified Monthly	Standard Feature Mowing	N/A	220	9
HI-35	Gate	Modified Monthly	Open Area Mowing	Includes HI-36	3,000	9
HI-36	Sign	Modified Monthly	Standard Feature Mowing	Included in HI-35	0	9
HI-37	Gate	Modified Monthly	Standard Feature Mowing	N/A	220	9
HI-38	Parking	Modified Monthly	Open Area Mowing	Includes HI-39	8,500	9
HI-39	Gate	Modified Monthly	Standard Feature Mowing	Included in HI-38	0	9
HI-40	Fishing Pier	Modified Monthly	Open Area Mowing	N/A	1,500	9
HI-41	Pump	Modified Monthly	Standard Feature Mowing	N/A	80	9



**Heart Island Conservation Area  
Service Point Mowing Locations**

Identifier	Type of Feature	Frequency	Description of Mowing Needs	Comments	Estimate of Sq. Footage	Estimated Number of Cuts per Year
HI-42	Parking	Modified Monthly	Open Area Mowing	Includes HI-43	6,000	9
HI-43	Gate	Modified Monthly	Standard Feature Mowing	Included in HI-42	0	9
HI-44	Sign	Modified Monthly	Open Area Mowing	N/A	1,800	9
<b>Total Square Footage:</b>					<b>250,340</b>	

**Crescent Lake Conservation Area**  
**Service Point Mowing Locations**

Identifier	Type of Feature	Frequency	Description of Mowing Needs	Comments	Estimate of Sq. Footage	Estimated Number of Cuts per Year
CL-01	Parking	Modified Monthly	Open Area Mowing	Includes CL-02 & CL-03	43,560	9
CL-02	Sign	Modified Monthly	Standard Feature Mowing	Included in CL-01	0	9
CL-03	Gate	Modified Monthly	Standard Feature Mowing	Included in CL-01	0	9
CL-04	Kiosk	Modified Monthly	Standard Feature Mowing	N/A	120	9
CL-05	Camp Site	Modified Monthly	Open Area Mowing	Includes CL-06, 07, 08	25,265	9
CL-06	Porta-Potty	Modified Monthly	Standard Feature Mowing	Included in CL-05	0	9
CL-07	Building/ Shelter	Modified Monthly	Standard Feature Mowing	Included in CL-05	0	9
CL-08	Building/ Shelter	Modified Monthly	Standard Feature Mowing	Included in CL-05	0	9
<b>Total Square Footage:</b>					<b>68,945</b>	



**Lake George Conservation Area**  
**Service Point Mowing Locations**

Identifier	Type of Feature	Frequency	Description of Mowing Needs	Comments	Estimate of Sq. Footage	Estimated Number of Cuts per Year
LG-01	Parking	Modified Monthly	Open Area Mowing	Includes LG-02, LG-03, LG-04	113,256	9
LG-02	Gate	Modified Monthly	Standard Feature Mowing	Included in LG-01	0	9
LG-03	Kiosk	Modified Monthly	Standard Feature Mowing	Included in LG-01	0	9
LG-04	Pump	Modified Monthly	Standard Feature Mowing	Included in LG-01	0	9
LG-05	Gate	Modified Monthly	Standard Feature Mowing	Included in LG-01	0	9
LG-06	Porta-Potty	Modified Monthly	Standard Feature Mowing	N/A	330	9
LG-07	Building/ Shelter	Modified Monthly	Open Area Mowing	N/A	3,800	9
LG-08	Camp Site	Modified Monthly	Open Area Mowing	N/A	34,000	9
LG-09	Sign	Modified Monthly	Open Area Mowing	N/A	2,800	9
LG-10	Gate	Modified Monthly	Standard Feature Mowing	N/A	220	9
LG-11	Sign	Modified Monthly	Standard Feature Mowing	N/A	80	9
LG-12	Gate	Modified Monthly	Standard Feature Mowing	N/A	220	9
LG-13	Pump	Modified Monthly	Standard Feature Mowing	N/A	220	9
LG-14	Kiosk	Modified Monthly	Standard Feature Mowing	N/A	220	9
LG-15	Pump	Modified Monthly	Standard Feature Mowing	Included in LG-16	0	9
LG-16	Other	Modified Monthly	Open Area Mowing	Includes LG-15	44,100	9
LG-17	Gate	Modified Monthly	Open Area Mowing	N/A	4,000	9
LG-18	Building/ Shelter	Modified Monthly	Open Area Mowing	N/A	52,500	9
LG-19	Gate	Modified Monthly	Standard Feature Mowing	N/A	220	9
LG-20	Sign	Modified Monthly	Standard Feature Mowing	N/A	0	9
LG-21	Camp Site	Modified Monthly	Open Area Mowing	N/A	28,875	9
LG-22	Gate	Modified Monthly	Standard Feature Mowing	N/A	220	9
LG-23	Camp Site	Modified Monthly	Open Area Mowing	Includes LG-24	22,000	9
LG-24	Building/ Shelter	Modified Monthly	Standard Feature Mowing	Included in LG-23	0	9
LG-25	Parking	Modified Monthly	Open Area Mowing	Includes LG-26	16,000	9
LG-26	Sign	Modified Monthly	Standard Feature Mowing	Included in LG-25	0	9
LG-27	Telemetry Station	Modified Monthly	Standard Feature Mowing	N/A	80	9
LG-28	Gate	Modified Monthly	Standard Feature Mowing	N/A	220	9
LG-29	Sign	Modified Monthly	Standard Feature Mowing	N/A	220	9
LG-30	Gate	Modified Monthly	Standard Feature Mowing	N/A	220	9
LG-31	Gate	Modified Monthly	Standard Feature Mowing	N/A	220	9
LG-32	Gate	Modified Monthly	Standard Feature Mowing	N/A	220	9
LG-33	Gate	Modified Monthly	Standard Feature Mowing	N/A	220	9
LG-34	Monitoring Well	Modified Monthly	Open Area Mowing	N/A	8,500	9
<b>Total Square Footage:</b>					<b>332,961</b>	

**Ocklawaha Prairie Restoration Area  
Area Mowing Locations**

Identifier	Type of Feature	Frequency	Description of Mowing Needs	Comments	Estimate of Sq. Footage	Estimated Number of Cuts per Year
OP-01	Gate	Modified Semi-Monthly	Standard Feature Mowing	N/A	220	14
OP-02	Sign	Modified Semi-Monthly	Open Area Mowing	N/A	1,200	13
OP-03	Parking	Modified Semi-Monthly	Open Area Mowing	Includes OP-04	45,864	14
OP-04	Gate	Modified Semi-Monthly	Standard Feature Mowing	Included in OP-02	0	14
OP-05	Kiosk	Modified Semi-Monthly	Standard Feature Mowing	N/A	120	14
OP-06	Camp Site	Modified Semi-Monthly	Open Area Mowing	N/A	12,000	14
OP-07	Parking	Modified Semi-Monthly	Open Area Mowing	Includes OP-08 & OP-09	45,000	14
OP-08	Gate	Modified Semi-Monthly	Standard Feature Mowing	Included in OP-07	0	14
OP-09	Sign	Modified Semi-Monthly	Standard Feature Mowing	Included in OP-07	0	14
OP-10	Kiosk	Modified Semi-Monthly	Open Area Mowing	N/A	1,200	14
OP-11	Culvert	Modified Semi-Monthly	Standard Feature Mowing	N/A	80	14
OP-12	Culvert	Modified Semi-Monthly	Standard Feature Mowing	N/A	80	14
OP-13	Culvert	Modified Semi-Monthly	Standard Feature Mowing	N/A	80	14
OP-14	Culvert	Modified Semi-Monthly	Standard Feature Mowing	N/A	80	14
OP-15	Culvert	Modified Semi-Monthly	Standard Feature Mowing	N/A	80	14
OP-16	Culvert	Modified Semi-Monthly	Standard Feature Mowing	N/A	80	14
OP-17	Culvert	Modified Semi-Monthly	Standard Feature Mowing	N/A	80	14
OP-18	Culvert	Modified Semi-Monthly	Standard Feature Mowing	N/A	80	14
OP-19	Telemetry Station	Modified Semi-Monthly	Standard Feature Mowing	N/A	225	14
OP-20	Water Control Structure	Modified Semi-Monthly	Standard Feature Mowing	N/A	300	14
OP-21	Kiosk	Modified Semi-Monthly	Standard Feature Mowing	N/A	120	14
OP-22	Culvert	Modified Semi-Monthly	Standard Feature Mowing	N/A	80	14
OP-23	Observation Tower/ Platform	Modified Semi-Monthly	Open Area Mowing	N/A	1,500	14
OP-24	Culvert	Modified Semi-Monthly	Standard Feature Mowing	N/A	80	14
OP-25	Culvert	Modified Semi-Monthly	Standard Feature Mowing	N/A	80	14
OP-26	Culvert	Modified Semi-Monthly	Standard Feature Mowing	N/A	80	14
OP-27	Culvert	Modified Semi-Monthly	Standard Feature Mowing	N/A	80	14
OP-28	Culvert	Modified Semi-Monthly	Standard Feature Mowing	N/A	80	14
OP-29	Culvert	Modified Semi-Monthly	Standard Feature Mowing	N/A	80	14
OP-30	Boat Ramp	Modified Semi-Monthly	Open Area Mowing	N/A	1,200	14
OP-31	Telemetry Station	Modified Semi-Monthly	Standard Feature Mowing	N/A	225	14



**Ocklawaha Prairie Restoration Area  
Area Mowing Locations**

Identifier	Type of Feature	Frequency	Description of Mowing Needs	Comments	Estimate of Sq. Footage	Estimated Number of Cuts per Year
OP-32	Culvert	Modified Semi-Monthly	Standard Feature Mowing	N/A	80	14
OP-33	Culvert	Modified Semi-Monthly	Standard Feature Mowing	N/A	80	14
OP-34	Culvert	Modified Semi-Monthly	Standard Feature Mowing	N/A	80	14
OP-35	Culvert	Modified Semi-Monthly	Standard Feature Mowing	N/A	80	14
OP-36	Culvert	Modified Semi-Monthly	Standard Feature Mowing	N/A	80	14
OP-37	Culvert	Modified Semi-Monthly	Standard Feature Mowing	N/A	80	14
OP-38	Culvert	Modified Semi-Monthly	Standard Feature Mowing	N/A	80	14
OP-39	Culvert	Modified Semi-Monthly	Standard Feature Mowing	N/A	80	13
OP-40	Culvert	Modified Semi-Monthly	Standard Feature Mowing	N/A	80	13
OP-41	Culvert	Modified Semi-Monthly	Standard Feature Mowing	N/A	80	13
OP-42	Culvert	Modified Semi-Monthly	Standard Feature Mowing	N/A	80	13
OP-43	Culvert	Modified Semi-Monthly	Standard Feature Mowing	N/A	80	13
OP-44	Water Control Structure	Modified Semi-Monthly	Standard Feature Mowing	N/A	150	13
OP-45	Boat Ramp	Modified Semi-Monthly	Open Area Mowing	N/A	1,200	13
OP-46	Gate	Modified Semi-Monthly	Standard Feature Mowing	N/A	220	13
OP-47	Parking	Modified Semi-Monthly	Open Area Mowing	Includes OP-48 & OP-49	30,621	13
OP-48	Sign	Modified Semi-Monthly	Standard Feature Mowing	Included in OP-47	0	13
OP-49	Gate	Modified Semi-Monthly	Standard Feature Mowing	Included in OP-47	0	13
OP-50	Kiosk	Modified Semi-Monthly	Standard Feature Mowing	N/A	280	13
OP-51	Gate	Modified Semi-Monthly	Open Area Mowing	N/A	1,800	13
OP-52	Gate	Modified Semi-Monthly	Open Area Mowing	N/A	2,000	13
<b>Total Square Footage:</b>					<b>147,605</b>	

**Sunnyhill Restoration Area**  
**Service Area Mowing Locations**

Identifier	Type of Feature	Frequency	Description of Mowing Needs	Comments	Estimate of Sq. Footage	Estimated Number of Cuts per Year
<b>Sunnyhill</b>						
SH-01	Sign	Modified Semi-Monthly	Open Area Mowing	N/A	15,000	13
SH-02	Parking	Modified Semi-Monthly	Open Area Mowing	SH Field Office and parking area	68,500	13
SH-03	Gate	Modified Semi-Monthly	Standard Feature Mowing	Included in SH-05	0	13
SH-04	Gate	Modified Semi-Monthly	Standard Feature Mowing	Included in SH--05	0	13
SH-05	Parking	Modified Semi-Monthly	Open Area Mowing	Blue House & parking area	330,000	13
SH-06	Kiosk	Modified Semi-Monthly	Standard Feature Mowing	Included in SH-05	0	13
SH-07	Gate	Modified Semi-Monthly	Standard Feature Mowing	Included in SH-05	0	13
SH-08	Other	Modified Semi-Monthly	Standard Feature Mowing	Steps for mounting a horse	220	13
SH-09	Building/ Shelter	Modified Semi-Monthly	Open Area Mowing	SH Fleet employee parking area and Fleet compound.	165,900	13
SH-10	Building/ Shelter	Modified Semi-Monthly	Open Area Mowing	Grass area around barn included in SH-09	0	13
SH-11	Gate	Modified Semi-Monthly	Standard Feature Mowing	N/A	220	13
SH-12	Gate	Modified Semi-Monthly	Open Area Mowing	N/A	400	13
SH-13	Gate	Modified Semi-Monthly	Standard Feature Mowing	N/A	220	13
SH-14	Gate	Modified Semi-Monthly	Open Area Mowing	N/A	650	13
SH-15	Gate	Modified Semi-Monthly	Open Area Mowing	Includes SH-16 & Sh-17	1,660	13
SH-16	Other	Modified Semi-Monthly	Standard Feature Mowing	Included in SH-15, Horse mounting steps	0	13
SH-17	Other	Modified Semi-Monthly	Standard Feature Mowing	Included in SH-15, Horse mounting steps	0	13
SH-18	Water Control Structure	Modified Semi-Monthly	Standard Feature Mowing	N/A	220	13
SH-19	Telemetry Station	Modified Semi-Monthly	Standard Feature Mowing	Included in SH-20	0	13
SH-20	Observation Tower/ Platform	Modified Semi-Monthly	Open Area Mowing	Includes SH-19	1,500	13
SH-21	Water Control Structure	Modified Semi-Monthly	Open Area Mowing	N/A	700	13
SH-22	Telemetry Station	Modified Semi-Monthly	Standard Feature Mowing	N/A	220	13
SH-23	Telemetry Station	Modified Semi-Monthly	Standard Feature Mowing	N/A	220	13
SH-24	Building/ Shelter	Modified Semi-Monthly	Open Area Mowing	N/A	1,200	13
SH-25	Alum System	Modified Semi-Monthly	Open Area Mowing	Alum system associated w/pump	1,400	13
SH-26	Water Control Structure	Modified Semi-Monthly	Standard Feature Mowing	N/A	150	13
SH-27	Telemetry Station	Modified Semi-Monthly	Standard Feature Mowing	N/A	150	13
SH-28	Telemetry Station	Modified Semi-Monthly	Open Area Mowing	N/A	425	13
SH-29	Water Control Structure	Modified Semi-Monthly	Open Area Mowing	N/A	1,000	13
SH-30	Gate	Modified Semi-Monthly	Standard Feature Mowing	N/A	220	13
SH-31	Gate	Modified Semi-Monthly	Standard Feature Mowing	N/A	220	13
SH-32	Sign	Modified Semi-Monthly	Standard Feature Mowing	N/A	80	13



## Sunnyhill Restoration Area

### Service Area Mowing Locations

Identifier	Type of Feature	Frequency	Description of Mowing Needs	Comments	Estimate of Sq. Footage	Estimated Number of Cuts per Year
SH-33	Water Control Structure	Modified Semi-Monthly	Open Area Mowing	Grass area between lock and spillway.	43,560	13
SH-34	Culvert	Modified Semi-Monthly	Standard Feature Mowing		500	13
SH-35	Gate	Modified Semi-Monthly	Standard Feature Mowing	N/A	220	13
SH-36	Gate	Modified Semi-Monthly	Open Area Mowing	N/A	3,000	13
SH-37	Gate	Modified Semi-Monthly	Open Area Mowing	N/A	3,500	13
SH-38	Parking	Modified Semi-Monthly	Open Area Mowing	Includes SH-39 & SH-40	33,500	13
SH-39	Sign	Modified Semi-Monthly	Standard Feature Mowing	Included in SH-38	0	13
SH-40	Gate	Modified Semi-Monthly	Standard Feature Mowing	Included in SH-38	0	13
SH-41	Kiosk	Modified Semi-Monthly	Standard Feature Mowing	N/A	120	13
SH-42	Camp Site	Modified Semi-Monthly	Open Area Mowing	Includes SH-43	30,000	13
SH-43	Building/ Shelter	Modified Semi-Monthly	Standard Feature Mowing	Included in SH-42	0	13
SH-44	Hiking Walkway	Modified Semi-Monthly	Standard Feature Mowing	N/A	80	13
SH-45	Gate	Modified Semi-Monthly	Open Area Mowing	N/A	2,000	13
SH-46	Parking	Modified Semi-Monthly	Open Area Mowing	Includes SH-47	14,000	13
SH-47	Gate	Modified Semi-Monthly	Standard Feature Mowing	Included in SH-46	0	13
SH-48	Gate	Modified Semi-Monthly	Open Area Mowing	N/A	1,500	13
SH-49	Gate	Modified Semi-Monthly	Open Area Mowing	N/A	2,500	13
SH-50	Hiking Walkway	Modified Semi-Monthly	Standard Feature Mowing	N/A	220	13
SH-51	Parking	Modified Semi-Monthly	Open Area Mowing	Includes SH-52 & SH-53	31,500	13
SH-52	Sign	Modified Semi-Monthly	Standard Feature Mowing	Included in SH-51	0	13
SH-53	Gate	Modified Semi-Monthly	Standard Feature Mowing	Included in SH-51	0	13
SH-54	Kiosk	Modified Semi-Monthly	Standard Feature Mowing	N/A	220	13
SH-74	Gate	Modified Semi-Monthly	Standard Feature Mowing	N/A	100	13
<b>Sunnyhill South</b>						
SH-55	Parking	Modified Semi-Monthly	Open Area Mowing	Includes SH-56 & SH-57	57,200	9
SH-56	Gate	Modified Semi-Monthly	Standard Feature Mowing	Included in SH-55	0	9
SH-57	Sign	Modified Semi-Monthly	Standard Feature Mowing	Included in SH-55	0	9
SH-58	Kiosk	Modified Semi-Monthly	Standard Feature Mowing	N/A	120	9
SH-59	Gate	Modified Semi-Monthly	Open Area Mowing	N/A	2,000	9
SH-60	Gate	Modified Semi-Monthly	Open Area Mowing	N/A	1,800	9
SH-61	Gate	Modified Semi-Monthly	Open Area Mowing	N/A	1,800	9
<b>Sunnyhill West</b>						
SH-62	Parking	Modified Semi-Monthly	Open Area Mowing	Includes SH-63 & SH-64	21,780	9
SH-63	Sign	Modified Semi-Monthly	Standard Feature Mowing	Included in SH-62	0	9
SH-64	Gate	Modified Semi-Monthly	Standard Feature Mowing	Included in SH-62	0	9
SH-65	Kiosk	Modified Semi-Monthly	Open Area Mowing	Includes SH-66	360	9
SH-66	Other	Modified Semi-Monthly	Standard Feature Mowing	Included in SH-65, Horse mounting steps	0	9
SH-67	Gate	Modified Semi-Monthly	Open Area Mowing	N/A	3,500	9
SH-68	Gate	Modified Semi-Monthly	Open Area Mowing	N/A	2,200	9

**Sunnyhill Restoration Area**  
**Service Area Mowing Locations**

Identifier	Type of Feature	Frequency	Description of Mowing Needs	Comments	Estimate of Sq. Footage	Estimated Number of Cuts per Year
SH-69	Gate	Modified Semi-Monthly	Open Area Mowing	N/A	500	9
SH-70	Gate	Modified Semi-Monthly	Open Area Mowing	N/A	700	9
SH-71	Gate	Modified Semi-Monthly	Open Area Mowing	N/A	1,800	9
SH-72	Gate	Modified Semi-Monthly	Open Area Mowing	N/A	500	9
SH-73	Gate	Modified Semi-Monthly	Open Area Mowing	N/A	650	9
<b>Total Square Footage:</b>					<b>851,905</b>	



## Emeralda Marsh Restoration Area

### Service Area Mowing Locations

Identifier	Type of Feature	Frequency	Description of Mowing Needs	Comments	Estimate of Sq. Footage	Estimated Number of Cuts per Year
EM-01	Gate	Modified Semi-Monthly	Standard Feature Mowing	N/A	220	14
EM-02	Telemetry Station	Modified Semi-Monthly	Standard Feature Mowing	N/A	220	14
EM-03	Parking	Modified Semi-Monthly	Open Area Mowing	IncludeS EM-04, EM-05 & EM-06	52,300	14
EM-04	Sign	Modified Semi-Monthly	Standard Feature Mowing	Included in EM-03	0	14
EM-05	Kiosk	Modified Semi-Monthly	Standard Feature Mowing	Included in Em-03	0	14
EM-06	Gate	Modified Semi-Monthly	Standard Feature Mowing	Included inEM-03	0	14
EM-07	Boat Ramp	Modified Semi-Monthly	Open Area Mowing	N/A	1,000	14
EM-08	Gate	Modified Semi-Monthly	Standard Feature Mowing	N/A	220	14
EM-09	Gate	Modified Semi-Monthly	Standard Feature Mowing	N/A	220	14
EM-10	Fishing Pier	Modified Semi-Monthly	Open Area Mowing	Mow access trail, trim around pier and cut trim vegetation away from structure	6,450	14
EM-11	Gate	Modified Semi-Monthly	Open Area Mowing	N/A	1,200	14
EM-12	Telemetry Station	Modified Semi-Monthly	Standard Feature Mowing	N/A	225	14
EM-13	Parking	Modified Semi-Monthly	Open Area Mowing	Includes EM-14	20,000	14
EM-14	Gate	Modified Semi-Monthly	Standard Feature Mowing	Included in EM-13	0	14
EM-15	Gate	Modified Semi-Monthly	Standard Feature Mowing	N/A	220	14
EM-16	Gate	Modified Semi-Monthly	Standard Feature Mowing	N/A	220	14
EM-17	Gate	Modified Semi-Monthly	Standard Feature Mowing	N/A	220	14
EM-18	Gate	Modified Semi-Monthly	Standard Feature Mowing	N/A	220	14
EM-19	Gate	Modified Semi-Monthly	Standard Feature Mowing	N/A	220	14
EM-20	Pump	Modified Semi-Monthly	Standard Feature Mowing	N/A	220	14
EM-21	Gate	Modified Semi-Monthly	Standard Feature Mowing	N/A	220	14
EM-22	Parking	Modified Semi-Monthly	Open Area Mowing	Includes EM-23, EM-24, EM-25, & EM-26	20,000	14
EM-23	Sign	Modified Semi-Monthly	Standard Feature Mowing	Included in EM-22	0	14
EM-24	Kiosk	Modified Semi-Monthly	Standard Feature Mowing	Included in EM-22	0	14
EM-25	Gate	Modified Semi-Monthly	Standard Feature Mowing	Included in EM-22	0	14
EM-26	Hiking Walkway	Modified Semi-Monthly	Standard Feature Mowing	Included in EM-22	0	14
EM-27	Gate	Modified Semi-Monthly	Standard Feature Mowing	N/A	220	14
EM-28	Bridge	Modified Semi-Monthly	Standard Feature Mowing	N/A	500	14
EM-29	Gate	Modified Semi-Monthly	Standard Feature Mowing	N/A	200	14
EM-30	Other	Modified Semi-Monthly	Standard Feature Mowing	Mow around power pole	330	14
EM-31	Gate	Modified Semi-Monthly	Standard Feature Mowing	N/A	220	14
EM-32	Pump	Modified Semi-Monthly	Standard Feature Mowing	N/A	160	14
EM-33	Water Control Structure	Modified Semi-Monthly	Standard Feature Mowing	N/A	250	14
EM-34	Telemetry Station	Modified Semi-Monthly	Standard Feature Mowing	N/A	225	14
EM-35	Telemetry Station	Modified Semi-Monthly	Standard Feature Mowing	N/A	225	14

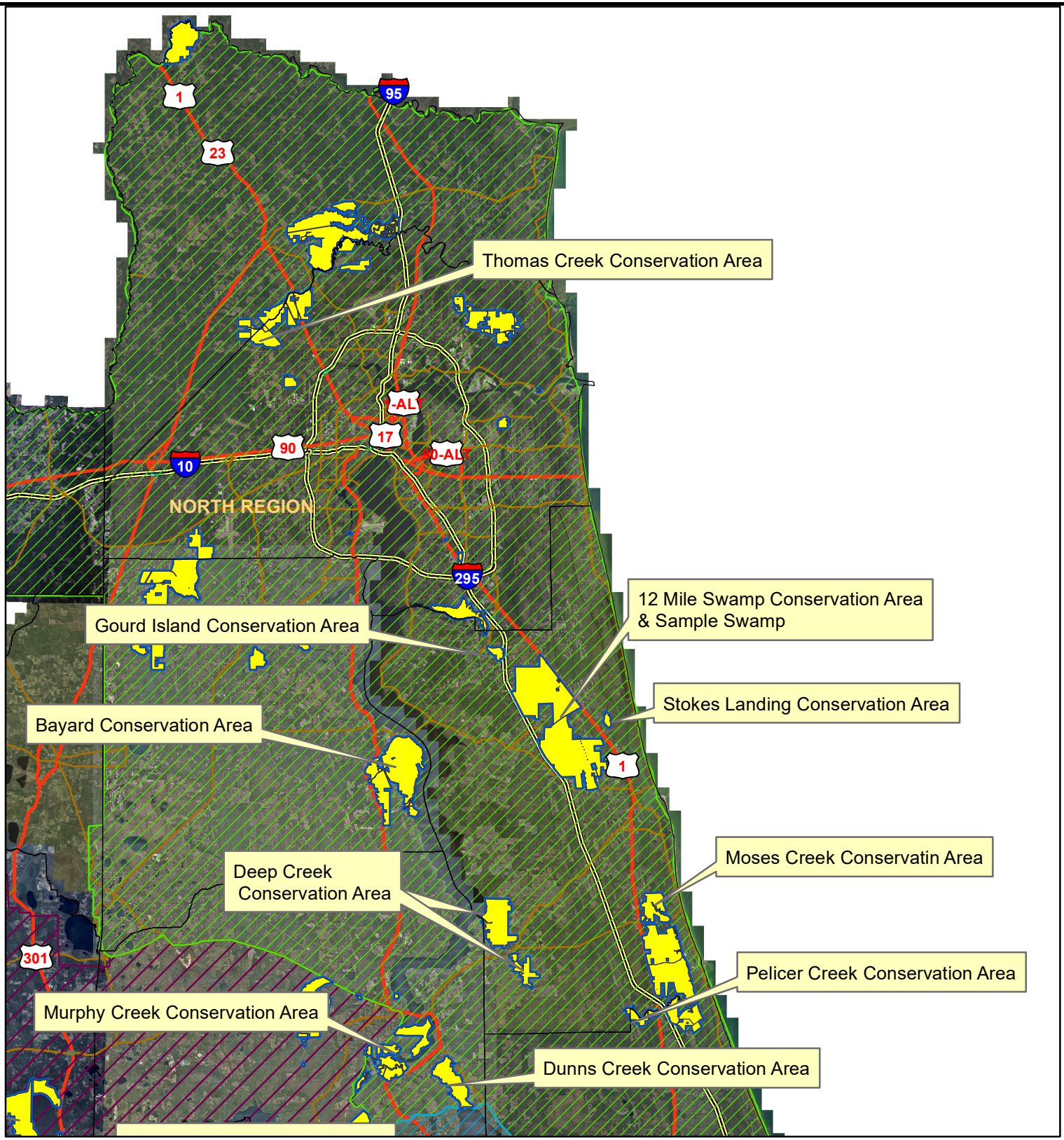
## Emeralda Marsh Restoration Area

### Service Area Mowing Locations

Identifier	Type of Feature	Frequency	Description of Mowing Needs	Comments	Estimate of Sq. Footage	Estimated Number of Cuts per Year
EM-36	Building/ Shelter	Modified Semi-Monthly	Standard Feature Mowing	N/A	3,000	14
EM-37	Gate	Modified Semi-Monthly	Standard Feature Mowing	N/A	320	14
EM-38	Bridge	Modified Semi-Monthly	Standard Feature Mowing	N/A	1,000	14
EM-39	Boat Ramp	Modified Semi-Monthly	Open Area Mowing	N/A	1,000	14
EM-40	Boat Ramp	Modified Semi-Monthly	Open Area Mowing	N/A	1,200	14
EM-41	Gate	Modified Semi-Monthly	Standard Feature Mowing	N/A	220	14
EM-42	Telemetry Station	Modified Semi-Monthly	Standard Feature Mowing	N/A	225	14
EM-43	Telemetry Station	Modified Semi-Monthly	Standard Feature Mowing	N/A	225	14
EM-44	Gate	Modified Semi-Monthly	Open Area Mowing	N/A	2,400	14
EM-45	Alum System	Modified Semi-Monthly	Open Area Mowing	N/A	3,400	14
EM-46	Gate	Modified Semi-Monthly	Standard Feature Mowing	N/A	220	13
EM-47	Gate	Modified Semi-Monthly	Standard Feature Mowing	N/A	220	13
EM-48	Telemetry Station	Modified Semi-Monthly	Standard Feature Mowing	N/A	225	13
EM-49	Gate	Modified Semi-Monthly	Standard Feature Mowing	N/A	220	13
EM-50	Gate	Modified Semi-Monthly	Standard Feature Mowing	N/A	220	13
EM-51	Boat Ramp	Modified Semi-Monthly	Open Area Mowing	N/A	43,560	13
EM-52	Telemetry Station	Modified Semi-Monthly	Standard Feature Mowing	Currently underwater and not accessible	0	13
EM-53	Gate	Modified Semi-Monthly	Standard Feature Mowing	N/A	220	13
EM-54	Gate	Modified Semi-Monthly	Standard Feature Mowing	N/A	220	13
EM-55	Gate	Modified Semi-Monthly	Standard Feature Mowing	N/A	220	13
EM-56	Gate	Modified Semi-Monthly	Standard Feature Mowing	N/A	220	13
EM-57	Telemetry Station	Modified Semi-Monthly	Standard Feature Mowing	N/A	225	13
EM-58	Boat Ramp	Modified Semi-Monthly	Open Area Mowing	N/A	1,200	13
EM-59	Gate	Modified Semi-Monthly	Standard Feature Mowing	N/A	220	13
EM-60	Gate	Modified Semi-Monthly	Open Area Mowing	N/A	1,500	13
<b>Total Square Footage:</b>					<b>167,605</b>	

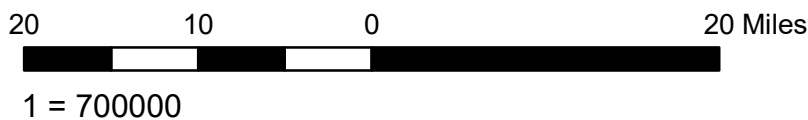
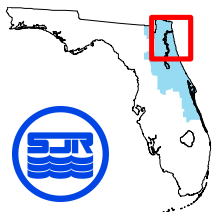
**Lake Norris Conservation Area  
Service Point Mowing Locations**

Identifier	Type of Feature	Frequency	Description of Mowing Needs	Comments	Estimate of Sq. Footage	Estimated Number of Cuts per Year
LN-01	Parking	Modified Monthly	Open Area Mowing	Includes LN-02 & LN-03.	21,780	9
LN-02	Sign	Modified Monthly	Standard Feature Mowing	Included in LN-01	0	9
LN-03	Gate	Modified Monthly	Standard Feature Mowing	Included in LN-01	0	9
LN-04	Kiosk	Modified Monthly	Open Area Mowing	N/A	2,600	9
LN-05	Gate	Modified Monthly	Standard Feature Mowing	N/A	220	9
LN-06	Hiking Walkway	Modified Monthly	Standard Feature Mowing	N/A	80	9
LN-07	Gate	Modified Monthly	Standard Feature Mowing	N/A	220	9
LN-08	Gate	Modified Monthly	Standard Feature Mowing	N/A	220	9
LN-09	Boat Ramp	Modified Monthly	Open Area Mowing	Includes LN-10	14,000	9
LN-10	Gate	Modified Monthly	Standard Feature Mowing	Included in LN-09	0	9
LN-11	Gate	Modified Monthly	Standard Feature Mowing	N/A	220	9
LN-12	Camp Site	Modified Monthly	Open Area Mowing	Includes LN-13 & LN-14	17,500	9
LN-13	Building/ Shelter	Modified Monthly	Standard Feature Mowing	Included in LN-12	0	9
LN-14	Pump	Modified Monthly	Standard Feature Mowing	Included in LN-12	0	9
LN-15	Bridge	Modified Monthly	Standard Feature Mowing	N/A	500	9
LN-16	Gate	Modified Monthly	Standard Feature Mowing	N/A	220	9
LN-17	Gate	Modified Monthly	Standard Feature Mowing	Included in LN-18	0	9
LN-18	Parking	Modified Monthly	Open Area Mowing	Includes LN-17, LN-19, LN-20 & LN-21	150,500	9
LN-19	Kiosk	Modified Monthly	Standard Feature Mowing	Included in LN-18	0	9
LN-20	Boat Ramp	Modified Monthly	Open Area Mowing	Included in LN-18	0	9
LN-21	Sign	Modified Monthly	Standard Feature Mowing	Included in LN-18	0	9
LN-22	Gate	Modified Monthly	Standard Feature Mowing	N/A	220	9
<b>Total Square Footage:</b>					<b>208,280</b>	



# St Johns River Water Management District

## North Region - Properties



### North Region Counties

- Duval
- Clay
- St Johns
- Flagler

**Bayard Conservation Area  
Service Area Mowing Locations**

Identifier	Type of Feature	Frequency	Description of Mowing Needs	Comments	Estimate of Sq. Footage	Estimated Number of Cuts per Year
BY-01	Parking	Modified Monthly	Open Area Mowing	Includes BY-02, 03, 04	23,237	9
BY-02	Gate	Modified Monthly	Standard Feature Mowing	Included in BY-01	0	9
BY-03	Gate	Modified Monthly	Standard Feature Mowing	Included in BY-01	0	9
BY-04	Gate	Modified Monthly	Standard Feature Mowing	Included in BY-01	0	9
BY-05	Gate	Modified Monthly	Open Area Mowing	N/A	1,100	9
BY-06	Gate	Modified Monthly	Standard Feature Mowing	N/A	400	9
BY-07	Gate	Modified Monthly	Open Area Mowing	N/A	1,400	9
BY-08	Parking	Modified Monthly	Open Area Mowing	N/A	3,200	9
BY-09	Gate	Modified Monthly	Standard Feature Mowing	N/A	350	9
BY-10	Parking	Modified Monthly	Open Area Mowing	Includes BY-11	2,824	9
BY-11	Gate	Modified Monthly	Standard Feature Mowing	Included in BY-10	0	9
BY-12	Gate	Modified Monthly	Standard Feature Mowing	N/A	350	9
BY-13	Parking	Modified Monthly	Open Area Mowing	Includes BY-14 & BY-15	13,000	9
BY-14	Gate	Modified Monthly	Standard Feature Mowing	Included in BY-13	0	9
BY-15	Sign	Modified Monthly	Standard Feature Mowing	Included in BY-13	0	9
BY-16	Parking	Modified Monthly	Open Area Mowing	Includes BY-17, & BY-18	10,800	9
BY-17	Sign	Modified Monthly	Standard Feature Mowing	Included in BY-16	0	9
BY-18	Gate	Modified Monthly	Standard Feature Mowing	Included in BY-16	0	9
BY-19	Camp Site	Modified Monthly	Open Area Mowing	N/A	26,280	9
BY-20	Gate	Modified Monthly	Open Area Mowing	N/A	600	9
BY-21	Gate	Modified Monthly	Open Area Mowing	N/A	1,500	9
BY-22	Gate	Modified Monthly	Open Area Mowing	N/A	1,000	9
BY-23	Gate	Modified Monthly	Open Area Mowing	N/A	4,250	9
BY-24	Parking	Modified Monthly	Open Area Mowing	Includes BY-25	5,500	9
BY-25	Gate	Modified Monthly	Standard Feature Mowing	Included in BY-24	0	9
BY-26	Gate	Modified Monthly	Open Area Mowing	N/A	5,400	9
BY-27	Building/ Shelter	Modified Monthly	Open Area Mowing	N/A	150,000	9
BY-28	Parking	Modified Monthly	Open Area Mowing	Includes BY-29	4,000	9
BY-29	Gate	Modified Monthly	Standard Feature Mowing	Included in BY-28	0	9
BY-30	Parking	Modified Monthly	Open Area Mowing	Includes BY-31 & BY-32.	6,000	9
BY-31	Gate	Modified Monthly	Standard Feature Mowing	Included in BY-30	0	9
BY-32	Gate	Modified Monthly	Standard Feature Mowing	Included in BY-30	0	9
BY-33	Gate	Modified Monthly	Open Area Mowing	N/a	2,100	9
BY-34	Parking	Modified Monthly	Open Area Mowing	Includes BY-35	2,600	9
BY-35	Gate	Modified Monthly	Standard Feature Mowing	Included in BY-34	0	9
BY-36	Gate	Modified Monthly	Open Area Mowing	N/A	1,700	9
BY-37	Parking	Modified Monthly	Open Area Mowing	Includes BY-38	2,700	9
BY-38	Gate	Modified Monthly	Standard Feature Mowing	Included in BY-37	0	9
BY-39	Telemetry Station	Modified Monthly	Open Area Mowing	N/A	17,500	9
BY-40	Other	Modified Monthly	Open Area Mowing	Includes BY-41, 42, 43	20,223	9
BY-41	Porta-Potty	Modified Monthly	Standard Feature Mowing	Included in BY-40	0	9
BY-42	Picnic Table	Modified Monthly	Standard Feature Mowing	Included in BY-40	0	9



**Bayard Conservation Area**  
**Service Area Mowing Locations**

Identifier	Type of Feature	Frequency	Description of Mowing Needs	Comments	Estimate of Sq. Footage	Estimated Number of Cuts per Year
BY-43	Other	Modified Monthly	Standard Feature Mowing	Included in BY-40	0	9
BY-44	Kiosk	Modified Monthly	Standard Feature Mowing	Included in BY-40	0	9
BY-45	Observation Tower/ Platform	Modified Monthly	Open Area Mowing	N/A	3,100	9
BY-46	Gate	Modified Monthly	Standard Feature Mowing	N/A	220	9
BY-47	Parking	Modified Monthly	Open Area Mowing	Includes BY-48 & BY-49 & BY-50	108,900	9
BY-48	Kiosk	Modified Monthly	Standard Feature Mowing	Included in BY-47	0	9
BY-49	Gate	Modified Monthly	Standard Feature Mowing	Included in BY-47	0	9
BY-50	Kiosk	Modified Monthly	Standard Feature Mowing	Included in BY-47	0	9
BY-51	Picnic Table	Modified Monthly	Open Area Mowing	N/A	13,000	9
BY-52	Gate	Modified Monthly	Standard Feature Mowing	N/A	220	9
BY-53	Sign	Modified Monthly	Open Area Mowing	N/A	2,500	9
BY-54	Gate	Modified Monthly	Standard Feature Moowing	N/A	2,500	9
BY-55	Other	Modified Monthly	Standard Feature Mowing	Hiking walkway entry point	120	9
<b>Total Square Footage:</b>					<b>438,574</b>	

## Gourd Island Conservation Area

### Service Area Mowing Locations

Identifier	Type of Feature	Frequency	Description of Mowing Needs	Comments	Estimate of Sq. Footage	Estimated Number of Cuts per Year
GI-01	Parking	Modified Monthly	Open Area Mowing	Includes GI-02 & GI-03	8,450	9
GI-02	Gate	Modified Monthly	Standard Feature Mowing	Included in GI-01	0	9
GI-03	Sign	Modified Monthly	Standard Feature Mowing	Included in GI-01	0	9
GI-04	Kiosk	Modified Monthly	Standard Feature Mowing	N/A	220	9
<b>Total Square Footage:</b>					<b>8,670</b>	

## Twelve Mile Swamp Conservation Area

### Service Area Mowing Locations

Identifier	Type of Feature	Frequency	Description of Mowing Needs	Comments	Estimate of Sq. Footage	Estimated Number of Cuts per Year
TS-01	Parking	Modified Monthly	Open Area Mowing	Includes TS-02 & TS-03	12,750	9
TS-02	Sign	Modified Monthly	Standard Feature Mowing	Included in TS-01	0	9
TS-03	Gate	Modified Monthly	Standard Feature Mowing	Included in TS-02	0	9
TS-04	Kiosk	Modified Monthly	Standard Feature Mowing	N/A	220	9
TS-05	Parking	Modified Monthly	Open Area Mowing	Includes TS-06	10,000	9
TS-06	Gate	Modified Monthly	Standard Feature Mowing	Included in TS-05	0	9
TS-07	Kiosk	Modified Monthly	Standard Feature Mowing	N/A	220	9
<b>Total Square Footage:</b>					<b>23,190</b>	

## Stokes Landing Conservation Area

### Service Area Mowing Locations

Identifier	Type of Feature	Frequency	Description of Mowing Needs	Comments	Estimate of Sq. Footage	Estimated Number of Cuts per Year
SL-01	Parking	Modified Monthly	Open Area Mowing	SL-02, SL-03, SL-04	8,900	9
SL-02	Gate	Modified Monthly	Standard Feature Mowing	Included in SL-01	0	9
SL-03	Kiosk	Modified Monthly	Standard Feature Mowing	Included in SL-01	0	9
SL-04	Sign	Modified Monthly	Standard Feature Mowing	Included in SL-01	0	9
SL-05	Building/ Shelter	Modified Monthly	Open Area Mowing	N/A	3,390	9
SL-06	Observation Tower/ Platform	Modified Monthly	Open Area Mowing	N/A	2,785	9
<b>Total Square Footage:</b>					<b>15,075</b>	

## Moses Creek Conservation Area

### Service Area Mowing Locations

Identifier	Type of Feature	Frequency	Description of Mowing Needs	Comments	Estimate of Sq. Footage	Estimated Number of Cuts per Year
MC-01	Parking	Modified Monthly	Open Area Mowing	Includes MC-02, MC-03, & MC-04	18,200	9
MC-02	Sign	Modified Monthly	Standard Feature Mowing	Included in MC-01	0	9
MC-03	Gate	Modified Monthly	Standard Feature Mowing	Included in MC-01	0	9
MC-04	Kiosk	Modified Monthly	Standard Feature Mowing	Included in MC-01	0	9
MC-05	Porta-Potty	Modified Monthly	Standard Feature Mowing	N/A	400	9
MC-06	Camp Site	Modified Monthly	Open Area Mowing	Includes MC-07, MC-08, MC-09, MC-10	17,050	9
MC-07	Building/ Shelter	Modified Monthly	Standard Feature Mowing	Included in MC-06	0	9
MC-08	Other	Modified Monthly	Standard Feature Mowing	Included in MC-06	0	9
MC-09	Bench	Modified Monthly	Standard Feature Mowing	Included in MC-06	0	9
MC-10	Porta-Potty	Modified Monthly	Standard Feature Mowing	Included in MC-06	0	9
MC-11	Parking	Modified Monthly	Open Area Mowing	Includes MC-12, MC-13, MC-14, MC-15	20,450	9
MC-12	Gate	Modified Monthly	Standard Feature Mowing	Included in MC-11	0	9
MC-13	Kiosk	Modified Monthly	Standard Feature Mowing	Included in MC-11	0	9
MC-14	Sign	Modified Monthly	Standard Feature Mowing	Included in MC-11	0	9
MC-15	Gate	Modified Monthly	Standard Feature Mowing	Included in MC-11	0	9
<b>Total Square Footage:</b>					<b>56,100</b>	



**Deep Creek Conservation Area  
Service Area Mowing Locations**

**Yarborough Parcel (South Parcel)**

Identifier	Type of Feature	Frequency	Description of Mowing Needs	Comments	Estimate of Sq. Footage	Estimated Number of Cuts per Year
DP-01	Parking	Modified Monthly	Open Area Mowing	Includes DP-03	26,575	9
DP-02	Gate	Modified Monthly	Open Area Mowing	N/A	660	9
DP-03	Gate	Modified Monthly	Standard Feature Mowing	Included in DP-01	0	9
<b>Total Square Footage:</b>					<b>27,235</b>	

**Lambert Parcel (North Parcel)**

Identifier	Type of Feature	Frequency	Description of Mowing Needs	Comments	Estimate of Sq. Footage	Estimated Number of Cuts per Year
DP-04	Parking	Modified Monthly	Open Area Mowing	Includes DP-05, & DP-06	9,300	9
DP-05	Sign	Modified Monthly	Standard Feature Mowing	Included in DP-04	0	9
DP-06	Gate	Modified Monthly	Standard Feature Mowing	Included in DP-04	0	9
DP-07	Kiosk	Modified Monthly	Standard Feature Mowing	N/A	500	9
DP-08	Gate	Modified Monthly	Open Area Mowing	N/A	1,500	9
<b>Total Square Footage:</b>					<b>11,300</b>	

## Dunns Creek Conservation Area

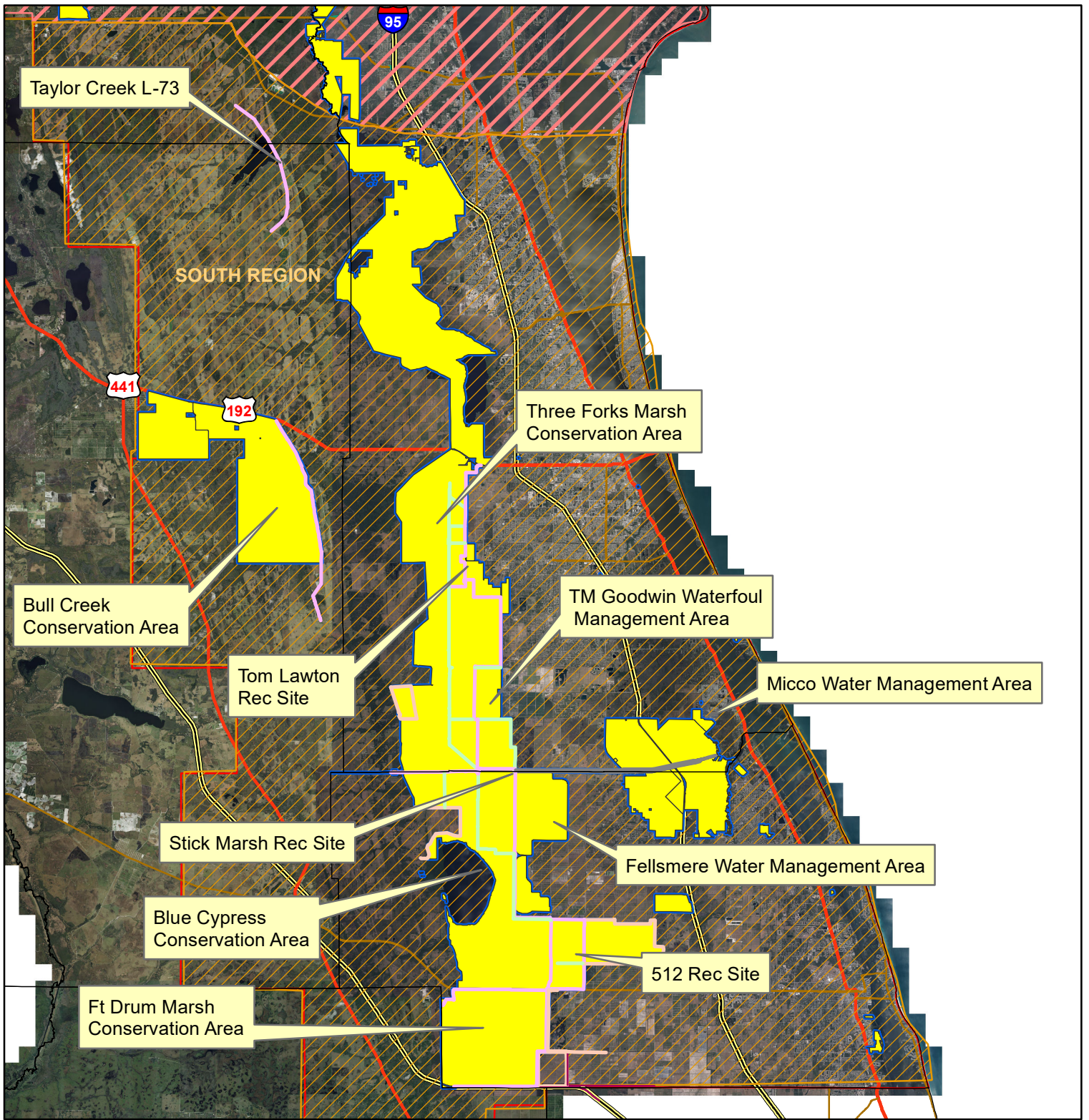
### Service Area Mowing Locations

Identifier	Type of Feature	Frequency	Description of Mowing Needs	Comments	Estimate of Sq. Footage	Estimated Number of Cuts per Year
DC-01	Parking	Modified Monthly	Open Area Mowing	Includes DC-02, 03, 04	16,000	9
DC-02	Sign	Modified Monthly	Standard Feature Mowing	Included in DC-01	0	9
DC-03	Kiosk	Modified Monthly	Standard Feature Mowing	Included in DC-01	0	9
DC-04	Gate	Modified Monthly	Standard Feature Mowing	Included in DC-01	0	9
DC-05	Camp Site	Modified Monthly	Open Area Mowing	Includes DC-06	16,000	9
DC-06	Building/ Shelter	Modified Monthly	Standard Feature Mowing	Included in DC-05	0	9
DC-07	Parking	Modified Monthly	Open Area Mowing	N/A	22,800	9
DC-08	Gate	Modified Monthly	Standard Feature Mowing	N/A	220	9
DC-09	Parking	Modified Monthly	Open Area Mowing	Includes DC-10, 11, 12	9,200	9
DC-10	Gate	Modified Monthly	Standard Feature Mowing	Included in DC-09	0	9
DC-11	Gate	Modified Monthly	Standard Feature Mowing	Included in DC-09	0	9
DC-12	Gate	Modified Monthly	Standard Feature Mowing	Included in DC-09	0	9
DC-13	Gate	Modified Monthly	Standard Feature Mowing	N/A	350	9
DC-14	Gate	Modified Monthly	Standard Feature Mowing	N/A	400	9
DC-15	Gate	Modified Monthly	Standard Feature Mowing	N/A	1,050	9
DC-16	Telemetry Station	Modified Monthly	Open Area Mowing	N/A	6,661	9
DC-17	Gate	Modified Monthly	Standard Feature Mowing	N/A	350	9
<b>Total Square Footage:</b>					<b>73,031</b>	

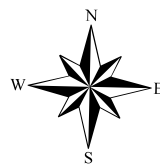
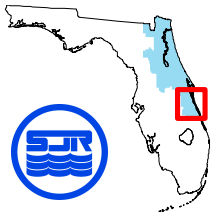
## Murphy Creek Conservation Area

### Service Area Mowing Locations

Identifier	Type of Feature	Frequency	Description of Mowing Needs	Comments	Estimate of Sq. Footage	Estimated Number of Cuts per Year
MY-01	Parking	Modified Monthly	Open Area Mowing	Includes MY-02 & MY-03	12,650	9
MY-02	Sign	Modified Monthly	Standard Feature Mowing	Included in MY-01	0	9
MY-03	Gate	Modified Monthly	Standard Feature Mowing	Included in MY-01	0	9
MY-04	Liosk	Modified Monthly	Standard Feature Mowing	N/A	220	9
MY-05	Gate	Modified Monthly	Open Area Mowing	N/A	1,770	9
MY-06	Gate	Modified Monthly	Standard Feature Mowing	N/A	350	9
<b>Total Square Footage:</b>					<b>14,990</b>	



**St. Johns River Water Management District**  
**South Region Counties**



**South Region Counties**

- Orange County**
- Oceola County**
- Brevard County**
- Indian River County**

**512 Recreation Site**  
**Service Mowing Locations**

Identifier	Type of Feature	Frequency	Description of Mowing Needs	Comments	Estimate of Sq. Footage	Estimated Number of Cuts per Year
CY-16	Parking	Modified Semi-Monthly	Special Feature Mowing	512 Rec Site, pavilions, restrooms, guardrails, gates, signs. Everything within the footprint.	70,000	13
<b>Total Square Footage</b>					<b>70,000</b>	



### C-54 Parking Area

#### Service Mowing Locations

Identifier	Type of Feature	Frequency	Description of Mowing Needs	Comments	Estimate of Sq. Footage	Estimated Number of Cuts per Year
CC-17	Parking	Modified Semi-Monthly	Standard Feature Mowing	Parking, pavilion, restroom, boat ramp, guardrails	30,000	13
					<b>30,000</b>	

## Stick Marsh Recreation Area

### Service Mowing Locations

Identifier	Type of Feature	Frequency	Description of Mowing Needs	Comments	Estimate of Sq. Footage	Estimated Number of Cuts per Year
CY-17	Parking	Modified Semi-Monthly	Special Feature Mowing	Stick Marsh Rec Site, boat ramp, pavilions, guardrail, fence, gates, overflow parking	80,000	13
<b>80,000</b>						

## Tom Lawton Recreation Site

### Service Mowing Locations

Identifier	Type of Feature	Frequency	Description of Mowing Needs	Comments	Estimate of Sq. Footage	Estimated Number of Cuts per Year
TF-29	Parking	Modified Semi-Monthly	Special Feature Mowing	Parking, boat ramp, guard rails, pavilion, restrooms, and fence-line along entrance road.	160,000	13
					<b>160,000</b>	

**Taylor Creek**  
**Service Mowing Locations**

Identifier	Type of Feature	Frequency	Description of Mowing Needs	Comments	Estimate of Sq. Footage	Estimated Number of Cuts per Year
TC-01	Gate	Modified Semi-Monthly	Standard Feature Mowing	N/A	220	13
TC-02	Gate	Modified Semi-Monthly	Standard Feature Mowing	N/A	220	13
TC-03	Water Control Structure	Modified Semi-Monthly	Open Area Mowing	S-164	43,560	13
<b>Total Square Footage</b>					<b>43,780</b>	

**Bull Creek**  
**Service Mowing Locations**

Identifier	Type of Feature	Frequency	Description of Mowing Needs	Comments	Estimate of Sq. Footage	Estimated Number of Cuts per Year
BC-01	Gate	Modified Semi-Monthly	Standard Feature Mowing	N/A	1,900	13
BC-02	Sign	Modified Semi-Monthly	Standard Feature Mowing	N/A	500	13
BC-03	Water Control Structure	Modified Semi-Monthly	Open Area Mowing	S-161A	43,560	13
BC-04	Water Control Structure	Modified Semi-Monthly	Open Area Mowing	S-161	43,560	13
<b>Total Square Footage</b>					<b>89,520</b>	

**Sawgrass Lake Water Management Area**  
**Service Mowing Locations**

Identifier	Type of Feature	Frequency	Description of Mowing Needs	Comments	Estimate of Sq. Footage	Estimated Number of Cuts per Year
SG-01	Water Control Structure	Modified Semi-Monthly	Standard Feature Mowing	N/A	150	13
SG-02	Water Control Structure	Modified Semi-Monthly	Standard Feature Mowing	N/A	150	13
SG-03	Telemetry Station	Modified Semi-Monthly	Standard Feature Mowing	N/A	225	13
SG-04	Water Control Structure	Modified Semi-Monthly	Standard Feature Mowing	N/A	150	13
SG-05	Water Control Structure	Modified Semi-Monthly	Standard Feature Mowing	N/A	150	13
SG-06	Water Control Structure	Modified Semi-Monthly	Standard Feature Mowing	N/A	150	13
SG-07	Water Control Structure	Modified Semi-Monthly	Standard Feature Mowing	N/A	150	13
SG-08	Water Control Structure	Modified Semi-Monthly	Standard Feature Mowing	N/A	150	13
SG-09	Water Control Structure	Modified Semi-Monthly	Standard Feature Mowing	N/A	150	13
SG-10	Water Control Structure	Modified Semi-Monthly	Standard Feature Mowing	N/A	150	13
SG-11	Water Control Structure	Modified Semi-Monthly	Standard Feature Mowing	N/A	150	13
SG-12	Telemetry Station	Modified Semi-Monthly	Standard Feature Mowing	N/A	225	13
<b>Total Square Footage</b>					<b>1,950</b>	



### Three Forks Marsh Conservation Area

#### Service Mowing Locations

Identifier	Type of Feature	Frequency	Description of Mowing Needs	Comments	Estimate of Sq. Footage	Estimated Number of Cuts per Year
TF-01	Parking	Modified Semi-Monthly	Open Area Mowing	N/A	43,560	13
TF-02	Gate	Modified Semi-Monthly	Standard Feature Mowing	Levee entrance gate, guardrail, and concrete wall	2,200	13
TF-03	Sign	Modified Semi-Monthly	Standard Feature Mowing	N/A	80	13
TF-04	Culvert	Modified Semi-Monthly	Standard Feature Mowing	N/A	1,600	13
TF-05	Pump	Modified Semi-Monthly	Open Area Mowing	C1 North Pump Station. Mow around pumps, Parking, Building, Guardrail, Power Poles	30,000	13
TF-06	Pump	Modified Semi-Monthly	Open Area Mowing	C1 South Pump Station. Mow around pumps, Parking, Building, Guardrail, Power Poles	27,000	13
TF-07	Water Control Structure	Modified Semi-Monthly	Standard Feature Mowing	N/A	225	13
TF-08	Water Control Structure	Modified Semi-Monthly	Open Area Mowing	N/A	15,000	13
TF-09	Sign	Modified Semi-Monthly	Standard Feature Mowing	N/A	80	13
TF-10	Telemetry Station	Modified Semi-Monthly	Standard Feature Mowing	N/A	225	13
TF-11	Bridge	Modified Semi-Monthly	Open Area Mowing	N/A	2,200	13
TF-12	Camp Site	Modified Semi-Monthly	Open Area Mowing	N/A	350,000	13
TF-13	Gate	Modified Semi-Monthly	Standard Feature Mowing	N/A	500	13
TF-14	Gate	Modified Semi-Monthly	Standard Feature Mowing	N/A	1,000	13
TF-15	Monitoring Well	Modified Semi-Monthly	Standard Feature Mowing	N/A	2,800	13
TF-16	Gate	Modified Semi-Monthly	Standard Feature Mowing	N/A	1,500	13
TF-17	Gate	Modified Semi-Monthly	Standard Feature Mowing	N/A	1,000	13
TF-18	Monitoring Well	Modified Semi-Monthly	Standard Feature Mowing	N/A	1,500	13
TF-19	Building/ Shelter	Modified Semi-Monthly	Standard Feature Mowing	N/A	2,500	13
TF-20	Telemetry Station	Modified Semi-Monthly	Standard Feature Mowing	N/A	2,000	13
TF-21	Weir Structure	Modified Semi-Monthly	Open Area Mowing	String trim along rip rap and walkway	4,000	13
TF-22	Weir Structure	Modified Semi-Monthly	Open Area Mowing	String trim along rip rap and walkway	4,000	13
TF-23	Weir Structure	Modified Semi-Monthly	Open Area Mowing	String trim along rip rap and walkway	4,000	13
TF-24	Culvert	Modified Semi-Monthly	Open Area Mowing	N/A	4,000	13
TF-25	Weir Structure	Modified Semi-Monthly	Open Area Mowing	String trim along rip rap and walkway	10,000	13
TF-26	Parking	Modified Semi-Monthly	Open Area Mowing	N/A	10,000	13
TF-27	Gate	Modified Semi-Monthly	Standard Feature Mowing	N/A	1,000	13
TF-28	Building/ Shelter	Modified Semi-Monthly	Open Area Mowing	Mow area and string trim around building	10,000	13
TF-30	Other	Modified Semi-Monthly	Standard Feature Mowing	String trim fence line 5 feet on both sides	100,000	13
<b>Total Square Footage</b>					<b>631,970</b>	

**TM Goodwin**  
**Service Mowing Locations**

Identifier	Type of Feature	Frequency	Description of Mowing Needs	Comments	Estimate of Sq. Footage	Estimated Number of Cuts per Year
TM-01	Sign	Modified Semi-Monthly	Open Area Mowing	N/A	8,000	13
TM-02	Parking	Modified Semi-Monthly	Open Area Mowing	N/A	9,000	13
TM-03	Pump	Modified Semi-Monthly	Open Area Mowing	N/A	2,200	13
TM-04	Sign	Modified Semi-Monthly	Standard Feature Mowing	N/A	80	13
TM-05	Other	Modified Semi-Monthly	Open Area Mowing	String trim around and under guardrail, gate, rip rap, signs, gates and fencing	1,700	13
<b>Total Square Footage</b>					<b>20,980</b>	

**C-54**

**Service Mowing Locations**

Identifier	Type of Feature	Frequency	Description of Mowing Needs	Comments	Estimate of Sq. Footage	Estimated Number of Cuts per Year
CC-01	Parking	Modified Semi-Monthly	Open Area Mowing	N/A	1,500	13
CC-02	Parking	Modified Semi-Monthly	Open Area Mowing	N/A	1,500	13
CC-03	Culvert	Modified Semi-Monthly	Open Area Mowing	N/A	21,375	13
CC-04	Gate	Modified Semi-Monthly	Open Area Mowing	N/A	1,500	13
CC-05	Parking	Modified Semi-Monthly	Open Area Mowing	N/A	32,000	13
CC-06	Gate	Modified Semi-Monthly	Open Area Mowing	N/A	28,000	13
CC-07	Gate	Modified Semi-Monthly	Open Area Mowing	N/A	7,000	13
CC-08	Culvert	Modified Semi-Monthly	Open Area Mowing	N/A	1,300	13
CC-09	Culvert	Modified Semi-Monthly	Open Area Mowing	N/A	1,300	13
CC-10	Culvert	Modified Semi-Monthly	Open Area Mowing	N/A	1,400	13
CC-11	Culvert	Modified Semi-Monthly	Open Area Mowing	N/A	1,400	13
CC-12	Culvert	Modified Semi-Monthly	Open Area Mowing	N/A	1,300	13
CC-13	Parking	Modified Semi-Monthly	Open Area Mowing	N/A	60,000	13
CC-14	Gate	Modified Semi-Monthly	Open Area Mowing	N/A	32,100	13
CC-18	Bridge	Modified Semi-Monthly	Open Area Mowing	N/A	2,000	13
CC-15	Building/ Shelter	Modified Semi-Monthly	Open Area Mowing	N/A	43,500	13
CC-16	Water Control Structure	Modified Semi-Monthly	Open Area Mowing	N/A	15,000	13
<b>Total Square Footage</b>					<b>252,175</b>	

## Fellsmere Water Management Area

### Service Mowing Locations

Identifier	Type of Feature	Frequency	Description of Mowing Needs	Comments	Estimate of Sq. Footage	Estimated Number of Cuts per Year
FW-01	Other	Modified Semi-Monthly	Open Area Mowing	N/A	43,560	13
FW-02	Other	Modified Semi-Monthly	Open Area Mowing	N/A	43,560	13
FW-03	Other	Modified Semi-Monthly	Open Area Mowing	N/A	43,560	13
FW-04	Weir Structure	Modified Semi-Monthly	Open Area Mowing	N/A	102,000	13
FW-05	Parking	Modified Semi-Monthly	Special Feature Mowing		110,000	13
<b>Total Square Footage</b>					<b>342,680</b>	

## Micco Stormwater Park

### Service Mowing Locations

Identifier	Type of Feature	Frequency	Description of Mowing Needs	Comments	Estimate of Sq. Footage	Estimated Number of Cuts per Year
IR-01	Parking	Modified Semi-Monthly	Open Area Mowing	N/A	16,000	13
IR-02	Kiosk	Modified Semi-Monthly	Standard Feature Mowing	N/A	120	13
IR-03	Picnic Table	Modified Semi-Monthly	Open Area Mowing	String trim around picnic tables	10,000	13
IR-04	Bridge	Modified Semi-Monthly	Standard Feature Mowing	N/A	1,000	13
IR-05	Weir Structure	Modified Semi-Monthly	Standard Feature Mowing	N/A	1,500	13
IR-06	Weir Structure	Modified Semi-Monthly	Open Area Mowing	N/A	15,000	13
IR-07	Weir Structure	Modified Semi-Monthly	Standard Feature Mowing	N/A	1,500	13
IR-08	Weir Structure	Modified Semi-Monthly	Standard Feature Mowing	N/A	1,500	13
IR-09	Gate	Modified Semi-Monthly	Open Area Mowing	N/A	10,000	13
<b>Total Square Footage</b>					<b>56,620</b>	

## Blue Cypress Water Management Area

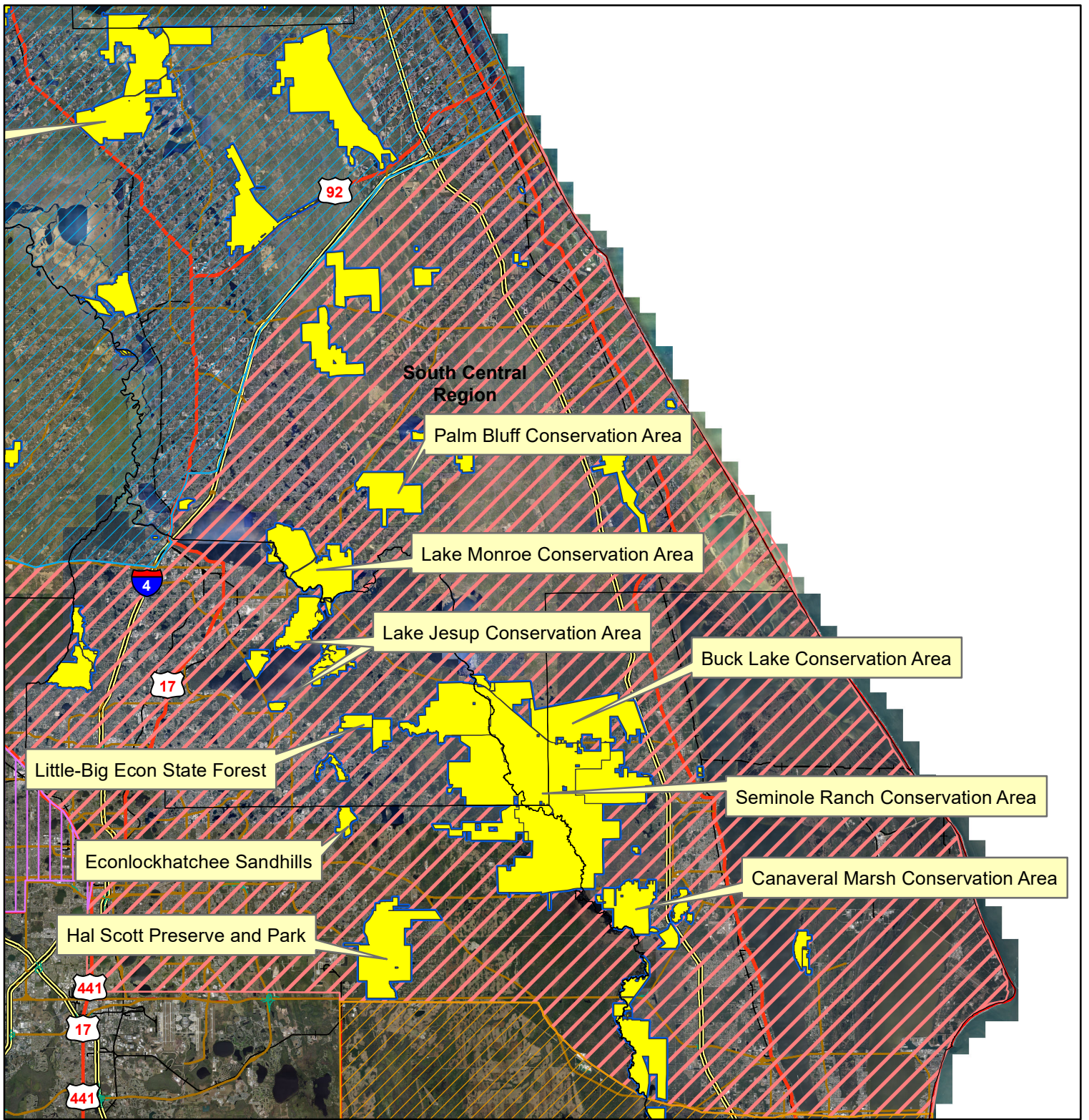
### Service Mowing Locations

Identifier	Type of Feature	Frequency	Description of Mowing Needs	Comments	Estimate of Sq. Footage	Estimated Number of Cuts per Year
CY-01	Gate	Modified Semi-Monthly	Standard Feature Mowing	N/A	1,000	13
CY-02	Gate	Modified Semi-Monthly	Standard Feature Mowing	N/A	1,500	13
CY-03	Water Control Structure	Modified Semi-Monthly	Open Area Mowing	N/A	16,000	13
CY-04	Gate	Modified Semi-Monthly	Standard Feature Mowing	N/A	300	13
CY-05	Gate	Modified Semi-Monthly	Standard Feature Mowing	N/A	300	13
CY-06	Pump	Modified Semi-Monthly	Open Area Mowing	N/A	7,000	13
CY-07	Water Control Structure	Modified Semi-Monthly	Open Area Mowing	N/A	2,500	13
CY-08	Pump	Modified Semi-Monthly	Open Area Mowing	N/A	10,000	13
CY-09	Building/ Shelter	Modified Semi-Monthly	Standard Feature Mowing	N/A	1,000	13
CY-10	Sign	Modified Semi-Monthly	Standard Feature Mowing	N/A	80	13
CY-11	Gate	Modified Semi-Monthly	Standard Feature Mowing	N/A	500	13
CY-12	Water Control Structure	Modified Semi-Monthly	Open Area Mowing	N/A	3,000	13
CY-13	Water Control Structure	Modified Semi-Monthly	Standard Feature Mowing	N/A	1,500	13
CY-14	Water Control Structure	Modified Semi-Monthly	Open Area Mowing	N/A	14,000	13
CY-15	Water Control Structure	Modified Semi-Monthly	Open Area Mowing	N/A	18,000	13
<b>Total Square Footage</b>					<b>76,680</b>	

## Fort Drum Marsh Conservation Area

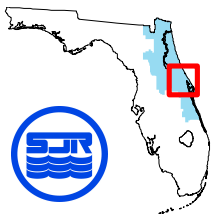
### Service Mowing Locations

Identifier	Type of Feature	Frequency	Description of Mowing Needs	Comments	Estimate of Sq. Footage	Estimated Number of Cuts per Year
FD-01	Sign	Modified Semi-Monthly	Open Area Mowing	N/A	10,000	13
FD-02	Gate	Modified Semi-Monthly	Open Area Mowing	N/A	5,000	13
FD-03	Water Control Structure	Modified Semi-Monthly	Standard Feature Mowing	N/A	1,000	13
FD-04	Monitoring Well	Modified Semi-Monthly	Standard Feature Mowing	N/A	1,000	13
FD-05	Water Control Structure	Modified Semi-Monthly	Standard Feature Mowing	N/A	1,500	13
FD-06	Gate	Modified Semi-Monthly	Standard Feature Mowing	N/A	1,000	13
FD-07	Parking	Modified Semi-Monthly	Open Area Mowing	N/A	13,000	13
FD-08	Building/ Shelter	Modified Semi-Monthly	Open Area Mowing	N/A	9,000	13
FD-09	Gate	Modified Semi-Monthly	Standard Feature Mowing	N/A	220	13
FD-10	Camp Site	Modified Semi-Monthly	Open Area Mowing	N/A	43,560	13
FD-11	Gate	Modified Semi-Monthly	Standard Feature Mowing	N/A	80	13
FD-12	Parking	Modified Semi-Monthly	Open Area Mowing	N/A	20,000	13
FD-13	Building/ Shelter	Modified Semi-Monthly	Open Area Mowing	N/A	8,000	13
FD-14	Gate	Modified Semi-Monthly	Standard Feature Mowing	N/A	1,000	13
FD-15	Sign	Modified Semi-Monthly	Standard Feature Mowing	N/A	80	13
FD-16	Parking	Modified Semi-Monthly	Open Area Mowing	N/A	8,928	13
FD-17	Gate	Modified Semi-Monthly	Standard Feature Mowing	N/A	1,000	13
FD-18	Water Control Structure	Modified Semi-Monthly	Standard Feature Mowing	N/A	875	13
FD-19	Weir Structure	Modified Semi-Monthly	Standard Feature Mowing	N/A	1,150	13
FD-22	Culvert	Modified Semi-Monthly	Standard Feature Mowing	N/A	1,000	13
FD-24	Water Control Structure	Modified Semi-Monthly	Standard Feature Mowing	N/A	1,000	13
FD-21	Water Control Structure	Modified Semi-Monthly	Standard Feature Mowing	N/A	1,000	13
<b>Total Square Footage</b>					<b>129,393</b>	



## St. Johns River Water Management District

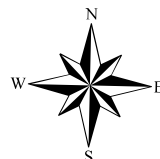
### South Central Region - Properties



10 5 0 10 Miles



1 = 500000



#### South Central Region Counties

**Brevard County**

**Orange County**

**Seminole County**

**Volusia County**



**Buck Lake**  
**Service Mowing Locations**

Identifier	Type of Feature	Frequency	Description of Mowing Needs	Comments	Estimate of Sq. Footage	Estimated Number of Cuts per Year
BL-01	Parking	Modified Monthly	Open Area Mowing	Includes BL-12	17,000	9
BL-02	Sign	Modified Monthly	Standard Feature Mowing	N/A	120	9
BL-03	Parking	Modified Monthly	Open Area Mowing	N/A	7,000	9
BL-04	Parking	Modified Monthly	Open Area Mowing	N/A	2,000	9
BL-05	Observation Tower/ Platform	Modified Monthly	Standard Feature Mowing	N/A	1,500	9
BL-06	Camp Site	Modified Monthly	Open Area Mowing	String trim around tables, bathroom	15,000	9
BL-07	Gate	Modified Monthly	Standard Feature Mowing	N/A	400	9
BL-08	Sign	Modified Monthly	Standard Feature Mowing	N/A	500	9
BL-09	Parking	Modified Monthly	Open Area Mowing	Includes BL-11.	43,560	9
BL-10	Kiosk	Modified Monthly	Standard Feature Mowing	N/A	120	9
BL-11	Gate	Modified Monthly	Standard Feature Mowing	Included in BL-09	0	9
BL-12	Kiosk	Modified Monthly	Standard Feature Mowing	Included in BL-01	0	9
<b>Total Square Footage</b>					<b>87,200</b>	

**Canaveral Marshes**  
**Service Mowing Locations**

Identifier	Type of Feature	Frequency	Description of Mowing Needs	Comments	Estimate of Sq. Footage	Estimated Number of Cuts per Year
CM-01	Sign	Modified Monthly	Standard Feature Mowing	N/A	375	9
CM-02	Kiosk	Modified Monthly	Standard Feature Mowing	N/A	372	9
CM-03	Gate	Modified Monthly	Standard Feature Mowing	N/A	250	9
<b>Total Square Footage</b>					<b>997</b>	

**Econlockhatchee**  
**Service Mowing Locations**

Identifier	Type of Feature	Frequency	Description of Mowing Needs	Comments	Estimate of Sq. Footage	Estimated Number of Cuts per Year
ES-01	Parking	Modified Monthly	Open Area Mowing	Includes ES-02	23,000	9
ES-02	Sign	Modified Monthly	Standard Feature Mowing	N/A	800	9
ES-03	Kiosk	Modified Monthly	Standard Feature Mowing	N/A	120	9
<b>Total Square Footage</b>					<b>23,920</b>	

## Hal Scott

### Service Mowing Locations

Identifier	Type of Feature	Frequency	Description of Mowing Needs	Comments	Estimate of Sq. Footage	Estimated Number of Cuts per Year
HS-01	Parking	Modified Monthly	Open Area Mowing	N/A	43,560	9
HS-02	Other	Modified Monthly	Standard Feature Mowing	Mow and string trim fence line	21,780	9
HS-03	Kiosk	Modified Monthly	Standard Feature Mowing	N/A	120	9
HS-04	Porta-Potty	Modified Monthly	Standard Feature Mowing	N/A	250	9
HS-05	Camp Site	Modified Monthly	Open Area Mowing	N/A	43,560	9
HS-06	Camp Site	Modified Monthly	Open Area Mowing	N/A	15,000	9
HS-07	Building/ Shelter	Modified Monthly	Standard Feature Mowing	N/A	280	9
HS-08	Sign	Modified Monthly	Standard Feature Mowing	N/A	250	9
<b>Total Square Footage</b>					<b>124,800</b>	

**Lake Jessup**  
**Service Mowing Locations**

Identifier	Type of Feature	Frequency	Description of Mowing Needs	Comments	Estimate of Sq. Footage	Estimated Number of Cuts per Year
LJ-01	Sign	Modified Monthly	Standard Feature Mowing	N/A	80	9
LJ-02	Parking	Modified Monthly	Open Area Mowing	N/A	10,000	9
LJ-03	Kiosk	Modified Monthly	Standard Feature Mowing	N/A	500	9
LJ-04	Parking	Modified Monthly	Open Area Mowing	N/A	15,000	9
LJ-05	Parking	Modified Monthly	Open Area Mowing	N/A	30,000	9
LJ-06	Kiosk	Modified Monthly	Standard Feature Mowing	N/A	200	9
LJ-07	Sign	Modified Monthly	Standard Feature Mowing	N/A	80	9
LJ-08	Parking	Modified Monthly	Open Area Mowing	N/A	25,500	9
<b>Total Square Footage</b>					<b>81,360</b>	

## Lake Monroe

### Service Mowing Locations

Identifier	Type of Feature	Frequency	Description of Mowing Needs	Comments	Estimate of Sq. Footage	Estimated Number of Cuts per Year
LM-01	Telemetry Station	Modified Monthly	Standard Feature Mowing	N/A	500	9
LM-02	Parking	Modified Monthly	Open Area Mowing	N/A	12,000	9
LM-03	Parking	Modified Monthly	Open Area Mowing	N/A	8,000	9
LM-04	Kiosk	Modified Monthly	Standard Feature Mowing	N/A	200	9
LM-05	Parking	Modified Monthly	Open Area Mowing	N/A	15,000	9
LM-06	Sign	Modified Monthly	Standard Feature Mowing	N/A	200	9
LM-07	Parking	Modified Monthly	Open Area Mowing	N/A	150,000	9
LM-08	Kiosk	Modified Monthly	Standard Feature Mowing	N/A	120	9
LM-09	Parking	Modified Monthly	Open Area Mowing	Mow parking area and fence line and gate.	10,000	9
LM-10	Porta-Potty	Modified Monthly	Standard Feature Mowing	N/A	330	9
LM-11	Camp Site	Modified Monthly	Open Area Mowing	Mow campsite and around structures.	20,000	9
<b>Total Square Footage</b>					<b>216,350</b>	

# Little Big Econ

## Service Mowing Locations

Identifier	Type of Feature	Frequency	Description of Mowing Needs	Comments	Estimate of Sq. Footage	Estimated Number of Cuts per Year
LB-01	Building/ Shelter	Modified Monthly	Open Area Mowing	String trim around office building, garage posts, signs, and fence	66,000	9
<b>Total Square Footage</b>					<b>66,000</b>	

## Palm Bluff

### Service Mowing Locations

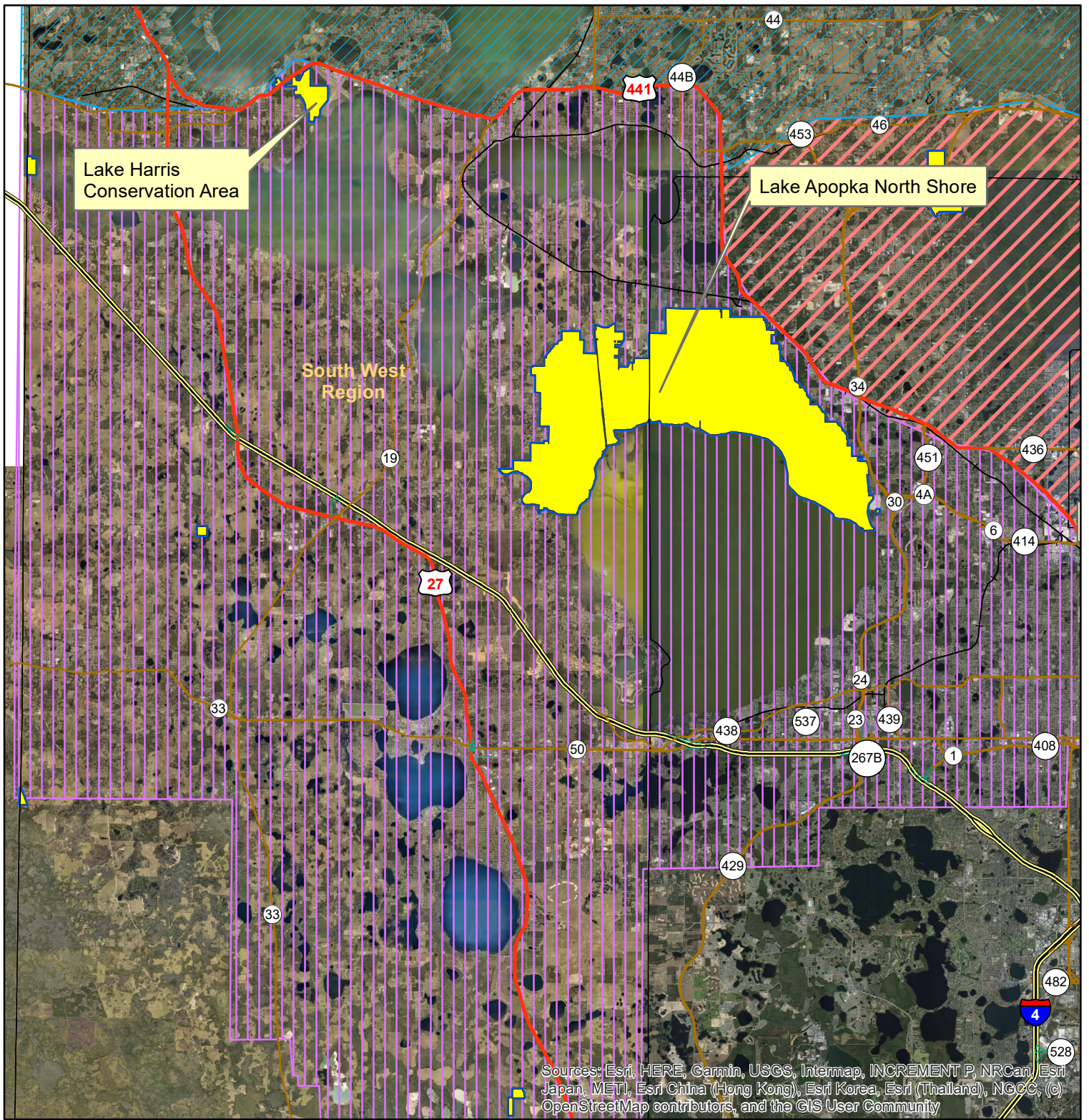
Identifier	Type of Feature	Frequency	Description of Mowing Needs	Comments	Estimate of Sq. Footage	Estimated Number of Cuts per Year
PB-01	Sign	Modified Monthly	Standard Feature Mowing	N/A	250	9
PB-02	Kiosk	Modified Monthly	Standard Feature Mowing	N/A	120	9
PB-03	Parking	Modified Monthly	Open Area Mowing	N/A	87,120	9
PB-04	Camp Site	Modified Monthly	Open Area Mowing	String trim around picnic tables	10,000	9
<b>Total Square Footage</b>					<b>97,490</b>	



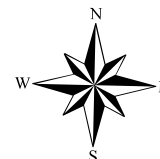
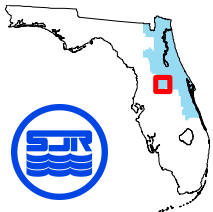
**Seminole Ranch**  
**Service Mowing Locations**

Identifier	Type of Feature	Frequency	Description of Mowing Needs	Comments	Estimate of Sq. Footage	Estimated Number of Cuts per Year
SR-01	Boat Ramp	Modified Monthly	Open Area Mowing	N/A	25,000	9
SR-02	Sign	Modified Monthly	Standard Feature Mowing	N/A	200	9
SR-03	Sign	Modified Monthly	Standard Feature Mowing	N/A	220	9
SR-04	Parking	Modified Monthly	Open Area Mowing	N/A	25,000	9
SR-05	Gate	Modified Monthly	Standard Feature Mowing	N/A	220	9
SR-06	Gate	Modified Monthly	Standard Feature Mowing	N/A	220	9
SR-07	Gate	Modified Monthly	Standard Feature Mowing	N/A	220	9
SR-08	Gate	Modified Monthly	Standard Feature Mowing	N/A	220	9
SR-09	Gate	Modified Monthly	Standard Feature Mowing	N/A	220	9
SR-10	Gate	Modified Monthly	Standard Feature Mowing	N/A	220	9
SR-11	Parking	Modified Monthly	Open Area Mowing	N/A	5,000	9
SR-12	Gate	Modified Monthly	Standard Feature Mowing	N/A	220	9
SR-13	Observation Tower/ Platform	Modified Monthly	Open Area Mowing	N/A	3,000	9
SR-14	Sign	Modified Monthly	Standard Feature Mowing	N/A	80	9
SR-15	Parking	Modified Monthly	Open Area Mowing	Mow parking area including fence line and gates.	43,560	9
SR-16	Gate	Modified Monthly	Standard Feature Mowing	N/A	220	9
SR-17	Kiosk	Modified Monthly	Standard Feature Mowing	N/A	500	9
SR-18	Gate	Modified Monthly	Standard Feature Mowing	N/A	500	9
SR-19	Porta-Potty	Modified Monthly	Standard Feature Mowing	N/A	160	9
SR-20	Camp Site	Modified Monthly	Open Area Mowing	String trim fence, signs, gates, kiosk,	43,560	9
<b>Total Square Footage</b>					<b>148,540</b>	





## St. Johns River Water Management District South West Region - Properties



### South West Region Counties

Lake County

Orange County



**Lake Apopka North Shore Restoration Area  
Service Mowing Locations**

Identifier	Section	Type of Feature	Frequency	Mowing Standards	Comments	Estimate of Sq. Footage	Estimated Number of Cuts per Year
AP-001	Zellwood	Gate	Modified Semi-Monthly	Open Area Mowing	Wildlife Drive Entrance	15,000	16
AP-002	Zellwood	Building/ Shelter	Modified Semi-Monthly	Open Area Mowing	N/A	800	16
AP-003	Zellwood	Sign	Modified Semi-Monthly	Standard Feature Mowing	N/A	80	16
AP-004	Zellwood	Porta-Potty	Modified Semi-Monthly	Open Area Mowing	Includes AP-05, AP-06, & AP-07	5,600	16
AP-005	Zellwood	Kiosk	Modified Semi-Monthly	Standard Feature Mowing	Included in AP-04	0	16
AP-006	Zellwood	Sign	Modified Semi-Monthly	Standard Feature Mowing	Included in AP-04	0	16
AP-007	Zellwood	Sign	Modified Semi-Monthly	Standard Feature Mowing	Included in AP-04	0	16
AP-008	Zellwood	Other	Modified Semi-Monthly	Open Area Mowing	Signs and removed bridge foundation, East side	550	16
AP-009	Zellwood	Sign	Modified Semi-Monthly	Standard Feature Mowing	N/A	80	16
AP-010	Zellwood	Telemetry Station	Modified Semi-Monthly	Standard Feature Mowing	N/A	350	16
AP-011	Zellwood	Gate	Modified Semi-Monthly	Open Area Mowing	Gate with Board Fence	900	16
AP-012	Zellwood	Other	Modified Semi-Monthly	Open Area Mowing	N/A	350	16
AP-013	Zellwood	Sign	Modified Semi-Monthly	Standard Feature Mowing	N/A	80	16
AP-014	Zellwood	Sign	Modified Semi-Monthly	Standard Feature Mowing	N/A	80	16
AP-015		Water Control Structure	Modified Semi-Monthly	Open Area Mowing	N/A	2,000	16
AP-016		Sign	Modified Semi-Monthly	Standard Feature Mowing	N/A	80	16
AP-017		Water Control Structure	Modified Semi-Monthly	Standard Feature Mowing	N/A	220	16
AP-018	Zellwood	Kiosk	Modified Semi-Monthly	Standard Feature Mowing	N/A	80	16
AP-019	Zellwood	Bridge	Modified Semi-Monthly	Standard Feature Mowing	N/A	300	16
AP-020	Zellwood	Sign	Modified Semi-Monthly	Standard Feature Mowing	N/A	80	16
AP-021	Zellwood	Building/ Shelter	Modified Semi-Monthly	Standard Feature Mowing	N/A	500	16
AP-022	Zellwood	Sign	Modified Semi-Monthly	Standard Feature Mowing	Included in AP-023	0	16
AP-023	Zellwood	Bridge	Modified Semi-Monthly	Standard Feature Mowing	N/A	800	16
AP-024	Zellwood	Sign	Modified Semi-Monthly	Standard Feature Mowing	Included in AP-027	0	16
AP-025	Zellwood	Gate	Modified Semi-Monthly	Open Area Mowing	N/A	1,500	16
AP-026	Zellwood	Telemetry Station	Modified Semi-Monthly	Standard Feature Mowing	Included in AP-027	0	16
AP-027	Zellwood	Parking	Modified Semi-Monthly	Open Area Mowing	N/A	7,500	16
AP-028	Zellwood	Porta-Potty	Modified Semi-Monthly	Standard Feature Mowing	Included in AP-027	0	16
AP-029	Zellwood	Alum System	Modified Semi-Monthly	Standard Feature Mowing	Included in AP-027	0	16
AP-030	Zellwood	Sign	Modified Semi-Monthly	Standard Feature Mowing	Included in AP-027	0	16
AP-031	Zellwood	Gate	Modified Semi-Monthly	Standard Feature Mowing	Included in AP-027	0	16
AP-032	Zellwood	Sign	Modified Semi-Monthly	Standard Feature Mowing	Included in AP-027	0	16
AP-033	Zellwood	Building/ Shelter	Modified Semi-Monthly	Open Area Mowing	Includes AP-034 & AP-035	3,200	16
AP-034	Zellwood	Kiosk	Modified Semi-Monthly	Standard Feature Mowing	Included in AP-033	0	16
AP-035	Zellwood	Pump	Modified Semi-Monthly	Standard Feature Mowing	Included in AP-033	0	16
AP-036	Zellwood	Bridge	Modified Semi-Monthly	Standard Feature Mowing	N/A	1,800	16

**Lake Apopka North Shore Restoration Area  
Service Mowing Locations**

Identifier	Section	Type of Feature	Frequency	Mowing Standards	Comments	Estimate of Sq. Footage	Estimated Number of Cuts per Year
AP-037	Zellwood	Gate	Modified Semi-Monthly	Standard Feature Mowing	N/A	420	16
AP-038	Zellwood	Sign	Modified Semi-Monthly	Standard Feature Mowing	N/A	80	16
AP-039	Zellwood	Water Control Structure	Modified Semi-Monthly	Standard Feature Mowing	N/A	250	16
AP-040	Zellwood	Gate	Modified Semi-Monthly	Standard Feature Mowing	N/A	220	16
AP-041	Zellwood	Bench	Modified Semi-Monthly	Standard Feature Mowing	N/A	120	16
AP-042	Zellwood	Sign	Modified Semi-Monthly	Standard Feature Mowing	N/A	80	16
AP-043	Zellwood	Water Control Structure	Modified Semi-Monthly	Standard Feature Mowing	N/A	350	16
AP-044	Zellwood	Kiosk	Modified Semi-Monthly	Open Area Mowing	Includes AP-045	800	16
AP-045	Zellwood	Bench	Modified Semi-Monthly	Standard Feature Mowing	Included in AP-44	0	16
AP-046	Zellwood	Telemetry Station	Modified Semi-Monthly	Standard Feature Mowing	Updated July 2022	225	16
AP-047	Zellwood	Sign	Modified Semi-Monthly	Standard Feature Mowing	Updated July 2022	80	16
AP-048	Zellwood	Gate	Modified Semi-Monthly	Standard Feature Mowing	Includes AP-049 & AP-050	2,660	16
AP-049	Zellwood	Telemetry Station	Modified Semi-Monthly	Standard Feature Mowing	Included in AP-049	0	16
AP-050	Zellwood	Water Control Structure	Modified Semi-Monthly	Standard Feature Mowing	Included in AP-048	0	16
AP-051	Zellwood	Sign	Modified Semi-Monthly	Standard Feature Mowing	N/A	80	16
AP-052	Zellwood	Sign	Modified Semi-Monthly	Standard Feature Mowing	N/A	80	16
AP-053	Zellwood	Water Control Structure	Modified Semi-Monthly	Standard Feature Mowing	N/A	500	16
AP-054	Zellwood	Sign	Modified Semi-Monthly	Standard Feature Mowing	N/A	80	16
AP-055	Zellwood	Sign	Modified Semi-Monthly	Standard Feature Mowing	N/A	80	16
AP-056	Zellwood	Sign	Modified Semi-Monthly	Standard Feature Mowing	N/A	80	16
AP-057	Zellwood	Sign	Modified Semi-Monthly	Standard Feature Mowing	N/A	80	16
AP-058	Zellwood	Parking	Modified Semi-Monthly	Open Area Mowing	Includes AP-059	13,500	16
AP-059	Zellwood	Porta-Potty	Modified Semi-Monthly	Standard Feature Mowing	Included in AP-058	0	16
AP-060	Zellwood	Sign	Modified Semi-Monthly	Standard Feature Mowing	N/A	80	16
AP-061	Zellwood	Sign	Modified Semi-Monthly	Standard Feature Mowing	N/A	80	16
AP-062	Zellwood	Sign	Modified Semi-Monthly	Standard Feature Mowing	N/A	80	16
AP-063	Zellwood	Sign	Modified Semi-Monthly	Standard Feature Mowing	N/A	80	16
AP-064	Zellwood	Kiosk	Modified Semi-Monthly	Standard Feature Mowing	N/A	220	16
AP-065	Zellwood	Sign	Modified Semi-Monthly	Standard Feature Mowing	N/A	80	16
AP-066	Zellwood	Sign	Modified Semi-Monthly	Standard Feature Mowing	N/A	80	16
AP-067	Zellwood	Sign	Modified Semi-Monthly	Standard Feature Mowing	N/A	80	16
AP-068	Zellwood	Gate	Modified Semi-Monthly	Standard Feature Mowing	Gate with Fencing	350	16
AP-069	Zellwood	Water Control Structure	Modified Semi-Monthly	Standard Feature Mowing	N/A	900	16
AP-070	Zellwood	Sign	Modified Semi-Monthly	Standard Feature Mowing	N/A	80	16
AP-071	Zellwood	Sign	Modified Semi-Monthly	Standard Feature Mowing	N/A	80	16
AP-072	Zellwood	Sign	Modified Semi-Monthly	Standard Feature Mowing	N/A	80	16

**Lake Apopka North Shore Restoration Area  
Service Mowing Locations**

Identifier	Section	Type of Feature	Frequency	Mowing Standards	Comments	Estimate of Sq. Footage	Estimated Number of Cuts per Year
AP-073	Zellwood	Sign	Modified Semi-Monthly	Standard Feature Mowing	N/A	80	16
AP-074	Zellwood	Telemetry Station	Modified Semi-Monthly	Standard Feature Mowing	N/A	220	16
AP-075	Zellwood	Gate	Modified Semi-Monthly	Open Area Mowing	Gate with Board Fence, includes AP-076	600	16
AP-076	Zellwood	Sign	Modified Semi-Monthly	Standard Feature Mowing	Included in Gate AP-075	0	16
AP-077	Zellwood	Sign	Modified Semi-Monthly	Standard Feature Mowing	N/A	80	16
AP-078	Zellwood	Water Control Structure	Modified Semi-Monthly	Standard Feature Mowing	N/A	220	16
AP-079	Zellwood	Water Control Structure	Modified Semi-Monthly	Standard Feature Mowing	N/A	220	16
AP-080	Zellwood	Water Control Structure	Modified Semi-Monthly	Standard Feature Mowing	N/A	220	16
AP-081	Zellwood	Water Control Structure	Modified Semi-Monthly	Standard Feature Mowing	N/A	220	16
AP-082	Zellwood	Sign	Modified Semi-Monthly	Standard Feature Mowing	N/A	80	16
AP-083	Zellwood	Sign	Modified Semi-Monthly	Standard Feature Mowing	N/A	80	16
AP-084	Flow-way	Sign	Modified Semi-Monthly	Standard Feature Mowing	N/A	80	16
AP-085	Zellwood	Telemetry Station	Modified Semi-Monthly	Standard Feature Mowing	N/A	220	16
AP-086	Zellwood	Water Control Structure	Modified Semi-Monthly	Standard Feature Mowing	N/A	440	16
AP-087	Zellwood	Bridge	Modified Semi-Monthly	Standard Feature Mowing	N/A	1,500	16
AP-088	Zellwood	Gate	Modified Semi-Monthly	Standard Feature Mowing	N/A	350	16
AP-089	Zellwood	Pump	Modified Semi-Monthly	Standard Feature Mowing	N/A	500	16
AP-090	Zellwood	Water Control Structure	Modified Semi-Monthly	Standard Feature Mowing	N/A	220	16
AP-091	Zellwood	Water Control Structure	Modified Semi-Monthly	Standard Feature Mowing	N/A	220	16
AP-092	Zellwood	Sign	Modified Semi-Monthly	Standard Feature Mowing	Included in AP-104	0	16
AP-093	Zellwood	Water Control Structure	Modified Semi-Monthly	Standard Feature Mowing	Included in AP-104	0	16
AP-094	Zellwood	Gate	Modified Semi-Monthly	Standard Feature Mowing	Included in AP-104	0	16
AP-095	Zellwood	Water Control Structure	Modified Semi-Monthly	Standard Feature Mowing	N/A	220	16
AP-096	Zellwood	Water Control Structure	Modified Semi-Monthly	Standard Feature Mowing	Included in AP-104	0	16
AP-097	Zellwood	Water Control Structure	Modified Semi-Monthly	Standard Feature Mowing	Included in AP-104	0	16
AP-098	Zellwood	Pump	Modified Semi-Monthly	Open Area Mowing	Includes AP-99, AP-100, AP-101, AP-102, AP-103	8,800	16
AP-099	Zellwood	Water Control Structure	Modified Semi-Monthly	Standard Feature Mowing	Included in AP-098	0	16
AP-100	Zellwood	Gate	Modified Semi-Monthly	Standard Feature Mowing	Gate with Board Fence included in AP-098	0	16
AP-101	Zellwood	Water Control Structure	Modified Semi-Monthly	Standard Feature Mowing	Included in AP-098	0	16
AP-102	Zellwood	Water Control Structure	Modified Semi-Monthly	Standard Feature Mowing	Included in AP-098	0	16
AP-103	Zellwood	Water Control Structure	Modified Semi-Monthly	Standard Feature Mowing	Included in AP-098	0	16
AP-104	Zellwood	Water Control Structure	Modified Semi-Monthly	Open Area Mowing	Includes AP-92, AP-93, AP-94, AP-96, AP-97, AP-104, AP-105, AP-106	18,750	16
AP-105	Zellwood	Water Control Structure	Modified Semi-Monthly	Standard Feature Mowing	Included in AP-104	0	16
AP-106	Zellwood	Water Control Structure	Modified Semi-Monthly	Standard Feature Mowing	Included in AP-104	0	16
AP-107	Zellwood	Kiosk	Modified Semi-Monthly	Standard Feature Mowing	Included in AP-110	0	16
AP-108	Zellwood	Building/ Shelter	Modified Semi-Monthly	Standard Feature Mowing	N/A	500	16

**Lake Apopka North Shore Restoration Area  
Service Mowing Locations**

Identifier	Section	Type of Feature	Frequency	Mowing Standards	Comments	Estimate of Sq. Footage	Estimated Number of Cuts per Year
AP-109	Zellwood	Parking	Modified Semi-Monthly	Open Area Mowing	N/A	1,000	16
AP-110	Zellwood	Gate	Modified Semi-Monthly	Open Area Mowing	Gate with Fencing Includes AP-107, AP-112n & AP-183	1,000	16
AP-111	Zellwood	Porta-Potty	Modified Semi-Monthly	Standard Feature Mowing	N/A	220	16
AP-112	Zellwood	Sign	Modified Semi-Monthly	Standard Feature Mowing	Included in AP-110	0	16
AP-113	Zellwood	Gate	Modified Semi-Monthly	Standard Feature Mowing	N/A	500	16
AP-114	Zellwood	Culvert	Modified Semi-Monthly	Standard Feature Mowing	N/A	250	16
AP-115	Zellwood	Telemetry Station	Modified Semi-Monthly	Open Area Mowing	Includes AP-116	220	16
AP-116	Zellwood	Sign	Modified Semi-Monthly	Standard Feature Mowing	Included in AP-115	0	16
AP-117	Zellwood	Bridge	Modified Semi-Monthly	Open Area Mowing	Includes AP-118 & AP-119	1,500	16
AP-118	Zellwood	Gate	Modified Semi-Monthly	Standard Feature Mowing	Included in AP-117	0	16
AP-119	Zellwood	Sign	Modified Semi-Monthly	Standard Feature Mowing	Included in AP-117	0	16
AP-120	Zellwood	Water Control Structure	Modified Semi-Monthly	Standard Feature Mowing	N/A	220	16
AP-121	Zellwood	Water Control Structure	Modified Semi-Monthly	Standard Feature Mowing	N/A	350	16
AP-122	Zellwood	Water Control Structure	Modified Semi-Monthly	Standard Feature Mowing	N/A	220	16
AP-123	Duda	Sign	Modified Semi-Monthly	Standard Feature Mowing	Included in bridge AP-247	0	16
AP-124	Zellwood	Gate	Modified Semi-Monthly	Standard Feature Mowing	N/A	500	16
AP-125	Zellwood	Water Control Structure	Modified Semi-Monthly	Standard Feature Mowing	N/A	250	16
AP-126	Zellwood	Water Control Structure	Modified Semi-Monthly	Standard Feature Mowing	N/A	220	16
AP-127	Zellwood	Gate	Modified Semi-Monthly	Standard Feature Mowing	Included in AP-128	0	16
AP-128	Zellwood	Bridge	Modified Semi-Monthly	Standard Feature Mowing	Includes AP-127	1,200	16
AP-129	Zellwood	Water Control Structure	Modified Semi-Monthly	Standard Feature Mowing	N/A	250	16
AP-130	Duda	Bench	Modified Semi-Monthly	Open Area Mowing	N/A	600	16
AP-131	Zellwood	Water Control Structure	Modified Semi-Monthly	Standard Feature Mowing	N/A	220	16
AP-132	Zellwood	Water Control Structure	Modified Semi-Monthly	Standard Feature Mowing	Included in AP-134	220	16
AP-133	Zellwood	Gate	Modified Semi-Monthly	Standard Feature Mowing	Included in AP-134	0	16
AP-134	Zellwood	Bridge	Modified Semi-Monthly	Open Area Mowing	Includes AP-132, AP-133, & AP-135	1,200	16
AP-135	Zellwood	Water Control Structure	Modified Semi-Monthly	Standard Feature Mowing	Included in AP-134	0	16
AP-136	Zellwood	Water Control Structure	Modified Semi-Monthly	Standard Feature Mowing	N/A	220	16
AP-137	Zellwood	Sign	Modified Semi-Monthly	Standard Feature Mowing	N/A	80	16
AP-138	Zellwood	Sign	Modified Semi-Monthly	Standard Feature Mowing	N/A	80	16
AP-139	Zellwood	Water Control Structure	Modified Semi-Monthly	Standard Feature Mowing	N/A	500	16
AP-140	Zellwood	Telemetry Station	Modified Semi-Monthly	Standard Feature Mowing	N/A	220	16
AP-141	Zellwood	Telemetry Station	Modified Semi-Monthly	Standard Feature Mowing	N/A	220	16
AP-142	Zellwood	Water Control Structure	Modified Semi-Monthly	Standard Feature Mowing	N/A	1,000	16
AP-143	Zellwood	Water Control Structure	Modified Semi-Monthly	Standard Feature Mowing	N/A	250	16
AP-144	Zellwood	Gate	Modified Semi-Monthly	Open Area Mowing	N/A	500	16

**Lake Apopka North Shore Restoration Area  
Service Mowing Locations**

Identifier	Section	Type of Feature	Frequency	Mowing Standards	Comments	Estimate of Sq. Footage	Estimated Number of Cuts per Year
AP-145	Zellwood	Sign	Modified Semi-Monthly	Standard Feature Mowing	Included in AP-146	0	16
AP-146	Zellwood	Pump	Modified Semi-Monthly	Open Area Mowing	Includes AP-145	15,800	16
AP-147	Zellwood	Pump	Modified Semi-Monthly	Open Area Mowing	N/A	1,200	16
AP-148	Sandfarm	Bridge	Modified Semi-Monthly	Open Area Mowing	Includes AP-149	1,200	16
AP-149	Sandfarm	Sign	Modified Semi-Monthly	Standard Feature Mowing	Included in AP-148	0	16
AP-150	Zellwood	Gate	Modified Semi-Monthly	Open Area Mowing	Includes AP-151 & AP-186	4,500	16
AP-151	Zellwood	Sign	Modified Semi-Monthly	Standard Feature Mowing	Included in AP-150	0	16
AP-152	Zellwood	Kiosk	Modified Semi-Monthly	Open Area Mowing	N/A	1,000	16
AP-153	Zellwood	Hiking Walkway	Modified Semi-Monthly	Open Area Mowing	Mow both ends of foot bridge	600	16
AP-154	Zellwood	Pump	Modified Semi-Monthly	Open Area Mowing	Pumps and Alum Tanks	4,800	16
AP-155	Zellwood	Gate	Modified Semi-Monthly	Standard Feature Mowing	N/A	220	16
AP-156	Zellwood	Sign	Modified Semi-Monthly	Standard Feature Mowing	N/A	80	16
AP-157	Zellwood	Water Control Structure	Modified Semi-Monthly	Standard Feature Mowing	N/A	220	16
AP-158	Zellwood	Gate	Modified Semi-Monthly	Standard Feature Mowing	N/A	225	16
AP-159	Zellwood	Sign	Modified Semi-Monthly	Standard Feature Mowing	N/A	80	16
AP-160	Zellwood	Water Control Structure	Modified Semi-Monthly	Standard Feature Mowing	N/A	220	16
AP-161	Zellwood	Water Control Structure	Modified Semi-Monthly	Standard Feature Mowing	N/A	220	16
AP-162	Zellwood	Water Control Structure	Modified Semi-Monthly	Standard Feature Mowing	N/A	220	16
AP-163	Zellwood	Bridge	Modified Semi-Monthly	Standard Feature Mowing	N/A	220	16
AP-164	Zellwood	Bridge	Modified Semi-Monthly	Standard Feature Mowing	N/A	220	16
AP-165	Zellwood	Bridge	Modified Semi-Monthly	Standard Feature Mowing	N/A	220	16
AP-166	Zellwood	Bridge	Modified Semi-Monthly	Standard Feature Mowing	N/A	220	16
AP-167	Zellwood	Kiosk	Modified Semi-Monthly	Standard Feature Mowing	N/A	220	16
AP-168	Zellwood	Sign	Modified Semi-Monthly	Standard Feature Mowing	N/A	80	16
AP-169	Zellwood	Parking	Modified Semi-Monthly	Open Area Mowing	Includes AP-170 & AP-171	14,500	16
AP-170	Zellwood	Sign	Modified Semi-Monthly	Standard Feature Mowing	Included in AP-169	0	16
AP-171	Zellwood	Gate	Modified Semi-Monthly	Standard Feature Mowing	Included in AP-169	0	16
AP-172	Zellwood	Telemetry Station	Modified Semi-Monthly	Standard Feature Mowing	N/A	220	16
AP-173	Zellwood	Telemetry Station	Modified Semi-Monthly	Standard Feature Mowing	N/A	220	16
AP-174	Zellwood	Sign	Modified Semi-Monthly	Standard Feature Mowing	N/A	80	16
AP-175	Zellwood	Sign	Modified Semi-Monthly	Standard Feature Mowing	N/A	80	16
AP-176	Zellwood	Sign	Modified Semi-Monthly	Standard Feature Mowing	N/A	80	16
AP-177	Zellwood	Sign	Modified Semi-Monthly	Standard Feature Mowing	N/A	80	16
AP-178	Zellwood	Sign	Modified Semi-Monthly	Standard Feature Mowing	N/A	80	16
AP-179	Zellwood	Sign	Modified Semi-Monthly	Standard Feature Mowing	N/A	80	16
AP-180	Zellwood	Sign	Modified Semi-Monthly	Standard Feature Mowing	N/A	80	16

**Lake Apopka North Shore Restoration Area  
Service Mowing Locations**

Identifier	Section	Type of Feature	Frequency	Mowing Standards	Comments	Estimate of Sq. Footage	Estimated Number of Cuts per Year
AP-181	Zellwood	Sign	Modified Semi-Monthly	Standard Feature Mowing	N/A	80	16
AP-182	Duda	Water Control Structure	Modified Semi-Monthly	Standard Feature Mowing	N/A	220	16
AP-183	Zellwood	Water Control Structure	Modified Semi-Monthly	Standard Feature Mowing	Included in AP-110	0	16
AP-184	Zellwood	Sign	Modified Semi-Monthly	Standard Feature Mowing	N/A	80	16
AP-185	Zellwood	Sign	Modified Semi-Monthly	Standard Feature Mowing	N/A	80	16
AP-186	Zellwood	Sign	Modified Semi-Monthly	Standard Feature Mowing	Included in AP-150	0	16
AP-187	Sandfarm	Gate	Modified Semi-Monthly	Open Area Mowing	Includes AP-188	2,700	16
AP-188	Sandfarm	Gate	Modified Semi-Monthly	Open Area Mowing	Included in AP-187	0	16
AP-189	Sandfarm	Gate	Modified Semi-Monthly	Standard Feature Mowing	N/A	220	16
AP-190	Sandfarm	Gate	Modified Semi-Monthly	Open Area Mowing	Gate and Fence	3,000	16
AP-191	Sandfarm	Gate	Modified Semi-Monthly	Standard Feature Mowing	N/A	400	16
AP-192	Sandfarm	Telemetry Station	Modified Semi-Monthly	Standard Feature Mowing	N/A	220	16
AP-193	Sandfarm	Telemetry Station	Modified Semi-Monthly	Standard Feature Mowing	N/A	220	16
AP-194	Sandfarm	Bridge	Modified Semi-Monthly	Standard Feature Mowing	N/A	1,500	16
AP-195	Duda	Building/ Shelter	Modified Semi-Monthly	Open Area Mowing	Apopka field office, sheds, shop building	82,000	16
AP-196	Duda	Gate	Modified Semi-Monthly	Standard Feature Mowing	N/A	220	16
AP-197	Duda	Gate	Modified Semi-Monthly	Open Area Mowing	N/A	1,220	16
AP-198	Duda	Bridge	Modified Semi-Monthly	Standard Feature Mowing	Bridge and Guardrail	1,000	16
AP-199	Duda	Gate	Modified Semi-Monthly	Standard Feature Mowing	N/A	620	16
AP-200	Duda	Gate	Modified Semi-Monthly	Standard Feature Mowing	N/A	300	16
AP-201	Duda	Parking	Modified Semi-Monthly	Open Area Mowing	Includes AP-202 & AP-203	33,500	16
AP-202	Duda	Kiosk	Modified Semi-Monthly	Standard Feature Mowing	Included in AP-201	0	16
AP-203	Duda	Gate	Modified Semi-Monthly	Standard Feature Mowing	Included in AP-201	0	16
AP-204	Duda	Electric Meter/ Transformer	Modified Semi-Monthly	Standard Feature Mowing	N/A	80	16
AP-205	Duda	Building/ Shelter	Modified Semi-Monthly	Open Area Mowing	Shad Site; Loading Dock, Building	15,000	16
AP-206	Duda	Gate	Modified Semi-Monthly	Standard Feature Mowing	N/A	220	16
AP-207	Duda	Sign	Modified Semi-Monthly	Standard Feature Mowing	N/A	80	16
AP-208	Duda	Culvert	Modified Semi-Monthly	Standard Feature Mowing	N/A	200	16
AP-209	Duda	Culvert	Modified Semi-Monthly	Standard Feature Mowing	N/A	200	16
AP-210	Duda	Culvert	Modified Semi-Monthly	Standard Feature Mowing	N/A	200	16
AP-211	Duda	Culvert	Modified Semi-Monthly	Standard Feature Mowing	N/A	200	16
AP-212	Duda	Culvert	Modified Semi-Monthly	Standard Feature Mowing	N/A	200	16
AP-213	Duda	Sign	Modified Semi-Monthly	Standard Feature Mowing	N/A	80	16
AP-214	Duda	Telemetry Station	Modified Semi-Monthly	Open Area Mowing	N/A	1,200	16
AP-215	Duda	Sign	Modified Semi-Monthly	Standard Feature Mowing	N/A	80	16
AP-216	Duda	Sign	Modified Semi-Monthly	Standard Feature Mowing	N/A	80	16



**Lake Apopka North Shore Restoration Area  
Service Mowing Locations**

Identifier	Section	Type of Feature	Frequency	Mowing Standards	Comments	Estimate of Sq. Footage	Estimated Number of Cuts per Year
AP-217	Duda	Water Control Structure	Modified Semi-Monthly	Standard Feature Mowing	N/A	600	16
AP-218	Duda	Picnic Table	Modified Semi-Monthly	Standard Feature Mowing	N/A	350	16
AP-219	Duda	Sign	Modified Semi-Monthly	Standard Feature Mowing	N/A	80	16
AP-220	Duda	Sign	Modified Semi-Monthly	Standard Feature Mowing	N/A	80	16
AP-221	Duda	Sign	Modified Semi-Monthly	Standard Feature Mowing	N/A	80	16
AP-222	Duda	Weir Structure	Modified Semi-Monthly	Standard Feature Mowing	N/A	500	16
AP-223	Duda	Kiosk	Modified Semi-Monthly	Standard Feature Mowing	N/A	220	16
AP-224	Duda	Building/ Shelter	Modified Semi-Monthly	Standard Feature Mowing	N/A	650	16
AP-225	Duda	Sign	Modified Semi-Monthly	Standard Feature Mowing	N/A	80	16
AP-226	Duda	Sign	Modified Semi-Monthly	Standard Feature Mowing	N/A	80	16
AP-227	Duda	Water Control Structure	Modified Semi-Monthly	Standard Feature Mowing	N/A	220	16
AP-228	Duda	Sign	Modified Semi-Monthly	Standard Feature Mowing	N/A	80	16
AP-229	Duda	Alum System	Modified Semi-Monthly	Open Area Mowing	N/A	3,000	16
AP-230	Duda	Pump	Modified Semi-Monthly	Open Area Mowing	N/A	1,600	16
AP-231	Duda	Weir Structure	Modified Semi-Monthly	Standard Feature Mowing	N/A	500	16
AP-232	Duda	Sign	Modified Semi-Monthly	Standard Feature Mowing	N/A	80	16
AP-233	Duda	Electric Meter/ Transformer	Modified Semi-Monthly	Standard Feature Mowing	N/A	220	16
AP-234	Duda	Culvert	Modified Semi-Monthly	Standard Feature Mowing	N/A	350	16
AP-235	Duda	Telemetry Station	Modified Semi-Monthly	Standard Feature Mowing	N/A	220	16
AP-236	Duda	Sign	Modified Semi-Monthly	Standard Feature Mowing	N/A	80	16
AP-237	Duda	Telemetry Station	Modified Semi-Monthly	Standard Feature Mowing	N/A	220	16
AP-238	Duda	Gate	Modified Semi-Monthly	Standard Feature Mowing	N/A	150	16
AP-239	Duda	Sign	Modified Semi-Monthly	Standard Feature Mowing	N/A	80	16
AP-240	Duda	Water Control Structure	Modified Semi-Monthly	Standard Feature Mowing	N/A	220	16
AP-241	Duda	Water Control Structure	Modified Semi-Monthly	Standard Feature Mowing	N/A	500	16
AP-242	Duda	Water Control Structure	Modified Semi-Monthly	Standard Feature Mowing	N/A	220	16
AP-243	Duda	Water Control Structure	Modified Semi-Monthly	Standard Feature Mowing	N/A	220	16
AP-244	Duda	Sign	Modified Semi-Monthly	Standard Feature Mowing	N/A	80	16
AP-245	Duda	Sign	Modified Semi-Monthly	Standard Feature Mowing	N/A	80	16
AP-246	Duda	Sign	Modified Semi-Monthly	Standard Feature Mowing	N/A	80	16
AP-247	Duda	Bridge	Modified Semi-Monthly	Standard Feature Mowing	Includes AP-123, AP-248, AP-249, & AP-250	500	16
AP-248	Flow-way	Sign	Modified Semi-Monthly	Standard Feature Mowing	Included in bridge AP-247	0	16
AP-249	Flow-way	Sign	Modified Semi-Monthly	Standard Feature Mowing	Included in bridge AP-247	0	16
AP-250	Flow-way	Sign	Modified Semi-Monthly	Standard Feature Mowing	Included in bridge AP-247	0	16
AP-251	Flow-way	Water Control Structure	Modified Semi-Monthly	Standard Feature Mowing	N/A	220	16
AP-252	Flow-way	Pump	Modified Semi-Monthly	Open Area Mowing	N/A	600	16

**Lake Apopka North Shore Restoration Area  
Service Mowing Locations**

Identifier	Section	Type of Feature	Frequency	Mowing Standards	Comments	Estimate of Sq. Footage	Estimated Number of Cuts per Year
AP-253	Flow-way	Telemetry Station	Modified Semi-Monthly	Standard Feature Mowing	N/A	220	16
AP-254	Flow-way	Sign	Modified Semi-Monthly	Standard Feature Mowing	N/A	80	16
AP-255	Flow-way	Water Control Structure	Modified Semi-Monthly	Standard Feature Mowing	N/A	220	16
AP-256	Flow-way	Pump	Modified Semi-Monthly	Open Area Mowing	N/A	1,200	16
AP-257	Flow-way	Water Control Structure	Modified Semi-Monthly	Standard Feature Mowing	N/A	220	16
AP-258	Flow-way	Water Control Structure	Modified Semi-Monthly	Standard Feature Mowing	N/A	220	16
AP-259	Flow-way	Telemetry Station	Modified Semi-Monthly	Standard Feature Mowing	N/A	220	16
AP-260	Flow-way	Water Control Structure	Modified Semi-Monthly	Standard Feature Mowing	N/A	220	16
AP-261	Flow-way	Water Control Structure	Modified Semi-Monthly	Standard Feature Mowing	N/A	220	16
AP-262	Flow-way	Telemetry Station	Modified Semi-Monthly	Standard Feature Mowing	N/A	220	16
AP-263	Flow-way	Sign	Modified Semi-Monthly	Standard Feature Mowing	N/A	80	16
AP-264	Flow-way	Telemetry Station	Modified Semi-Monthly	Standard Feature Mowing	N/A	220	16
AP-265	Flow-way	Pump	Modified Semi-Monthly	Standard Feature Mowing	N/A	220	16
AP-266	Flow-way	Sign	Modified Semi-Monthly	Standard Feature Mowing	N/A	80	16
AP-267	Flow-way	Sign	Modified Semi-Monthly	Standard Feature Mowing	N/A	80	16
AP-268	Flow-way	Sign	Modified Semi-Monthly	Standard Feature Mowing	N/A	80	16
AP-269	Flow-way	Electric Meter/Transformer	Modified Semi-Monthly	Open Area Mowing	N/A	1,600	16
AP-270	Flow-way	Water Control Structure	Modified Semi-Monthly	Standard Feature Mowing	N/A	220	16
AP-271	Flow-way	Water Control Structure	Modified Semi-Monthly	Standard Feature Mowing	N/A	220	16
AP-272	Flow-way	Water Control Structure	Modified Semi-Monthly	Standard Feature Mowing	N/A	220	16
AP-273	Flow-way	Water Control Structure	Modified Semi-Monthly	Standard Feature Mowing	N/A	220	16
AP-274	Flow-way	Telemetry Station	Modified Semi-Monthly	Standard Feature Mowing	N/A	220	16
AP-275	Flow-way	Telemetry Station	Modified Semi-Monthly	Standard Feature Mowing	N/A	220	16
AP-276	Flow-way	Water Control Structure	Modified Semi-Monthly	Standard Feature Mowing	N/A	220	16
AP-277	Flow-way	Water Control Structure	Modified Semi-Monthly	Standard Feature Mowing	N/A	220	16
AP-278	Flow-way	Water Control Structure	Modified Semi-Monthly	Standard Feature Mowing	N/A	220	16
AP-279	Flow-way	Water Control Structure	Modified Semi-Monthly	Standard Feature Mowing	N/A	220	16
AP-280	Flow-way	Water Control Structure	Modified Semi-Monthly	Standard Feature Mowing	N/A	220	16
AP-281	Flow-way	Water Control Structure	Modified Semi-Monthly	Standard Feature Mowing	N/A	220	16
AP-282	Flow-way	Water Control Structure	Modified Semi-Monthly	Standard Feature Mowing	N/A	220	16
AP-283	Flow-way	Water Control Structure	Modified Semi-Monthly	Standard Feature Mowing	N/A	220	16
AP-284	Flow-way	Telemetry Station	Modified Semi-Monthly	Standard Feature Mowing	N/A	220	16
AP-285	Flow-way	Water Control Structure	Modified Semi-Monthly	Standard Feature Mowing	N/A	220	16
AP-286	Flow-way	Water Control Structure	Modified Semi-Monthly	Standard Feature Mowing	N/A	220	16
AP-287	Flow-way	Water Control Structure	Modified Semi-Monthly	Standard Feature Mowing	N/A	220	16
AP-288	Flow-way	Water Control Structure	Modified Semi-Monthly	Standard Feature Mowing	N/A	220	16

**Lake Apopka North Shore Restoration Area  
Service Mowing Locations**

Identifier	Section	Type of Feature	Frequency	Mowing Standards	Comments	Estimate of Sq. Footage	Estimated Number of Cuts per Year
AP-289	Flow-way	Sign	Modified Semi-Monthly	Standard Feature Mowing	N/A	80	16
AP-290	Flow-way	Water Control Structure	Modified Semi-Monthly	Standard Feature Mowing	N/A	220	16
AP-291	Flow-way	Water Control Structure	Modified Semi-Monthly	Standard Feature Mowing	N/A	220	16
AP-292	Flow-way	Telemetry Station	Modified Semi-Monthly	Standard Feature Mowing	N/A	220	16
AP-293	Flow-way	Water Control Structure	Modified Semi-Monthly	Standard Feature Mowing	N/A	220	16
AP-294	Flow-way	Water Control Structure	Modified Semi-Monthly	Standard Feature Mowing	N/A	220	16
AP-295	Flow-way	Water Control Structure	Modified Semi-Monthly	Standard Feature Mowing	N/A	220	16
AP-296	Flow-way	Water Control Structure	Modified Semi-Monthly	Standard Feature Mowing	N/A	350	16
AP-297	Flow-way	Telemetry Station	Modified Semi-Monthly	Standard Feature Mowing	N/A	220	16
AP-298	Flow-way	Telemetry Station	Modified Semi-Monthly	Standard Feature Mowing	N/A	220	16
AP-299	Flow-way	Water Control Structure	Modified Semi-Monthly	Standard Feature Mowing	N/A	220	16
AP-300	Flow-way	Water Control Structure	Modified Semi-Monthly	Standard Feature Mowing	N/A	220	16
AP-301	Flow-way	Water Control Structure	Modified Semi-Monthly	Standard Feature Mowing	N/A	220	16
AP-302	Flow-way	Water Control Structure	Modified Semi-Monthly	Standard Feature Mowing	N/A	220	16
AP-303	Flow-way	Observation Tower/ Platform	Modified Semi-Monthly	Standard Feature Mowing	N/A	2,500	16
AP-304	Flow-way	Water Control Structure	Modified Semi-Monthly	Standard Feature Mowing	N/A	220	16
AP-305	Flow-way	Water Control Structure	Modified Semi-Monthly	Standard Feature Mowing	N/A	220	16
AP-306	Flow-way	Water Control Structure	Modified Semi-Monthly	Standard Feature Mowing	N/A	220	16
AP-307	Flow-way	Telemetry Station	Modified Semi-Monthly	Standard Feature Mowing	N/A	220	16
AP-308	Flow-way	Sign	Modified Semi-Monthly	Standard Feature Mowing	N/A	80	16
AP-309	Flow-way	Alum System	Modified Semi-Monthly	Open Area Mowing	N/A	600	16
AP-310	Flow-way	Water Control Structure	Modified Semi-Monthly	Standard Feature Mowing	N/A	220	16
AP-311	Flow-way	Sign	Modified Semi-Monthly	Standard Feature Mowing	N/A	80	16
AP-312	Flow-way	Alum System	Modified Semi-Monthly	Open Area Mowing	N/A	1,000	16
AP-313	Flow-way	Gate	Modified Semi-Monthly	Open Area Mowing	N/A	1,200	16
AP-314	Flow-way	Water Control Structure	Modified Semi-Monthly	Standard Feature Mowing	N/A	220	16
AP-315	Flow-way	Water Control Structure	Modified Semi-Monthly	Standard Feature Mowing	N/A	220	16
AP-316	Flow-way	Water Control Structure	Modified Semi-Monthly	Standard Feature Mowing	N/A	220	16
AP-317	Flow-way	Water Control Structure	Modified Semi-Monthly	Standard Feature Mowing	N/A	220	16
AP-318	Flow-way	Telemetry Station	Modified Semi-Monthly	Standard Feature Mowing	N/A	220	16
AP-319	Flow-way	Water Control Structure	Modified Semi-Monthly	Open Area Mowing	N/A	220	16
AP-320	Flow-way	Water Control Structure	Modified Semi-Monthly	Standard Feature Mowing	N/A	220	16
AP-321	Flow-way	Water Control Structure	Modified Semi-Monthly	Standard Feature Mowing	N/A	220	16
AP-322	Flow-way	Water Control Structure	Modified Semi-Monthly	Standard Feature Mowing	N/A	220	16
AP-323	Flow-way	Water Control Structure	Modified Semi-Monthly	Standard Feature Mowing	N/A	220	16
AP-324	Flow-way	Water Control Structure	Modified Semi-Monthly	Standard Feature Mowing	N/A	220	16

**Lake Apopka North Shore Restoration Area  
Service Mowing Locations**

Identifier	Section	Type of Feature	Frequency	Mowing Standards	Comments	Estimate of Sq. Footage	Estimated Number of Cuts per Year
AP-325	Flow-way	Water Control Structure	Modified Semi-Monthly	Standard Feature Mowing	N/A	220	16
AP-326	Flow-way	Water Control Structure	Modified Semi-Monthly	Standard Feature Mowing	N/A	220	16
AP-327	Flow-way	Water Control Structure	Modified Semi-Monthly	Standard Feature Mowing	N/A	220	16
AP-328	Flow-way	Telemetry Station	Modified Semi-Monthly	Standard Feature Mowing	N/A	220	16
AP-329	Flow-way	Telemetry Station	Modified Semi-Monthly	Standard Feature Mowing	N/A	220	16
AP-330	Flow-way	Water Control Structure	Modified Semi-Monthly	Standard Feature Mowing	N/A	220	16
AP-331	Flow-way	Water Control Structure	Modified Semi-Monthly	Standard Feature Mowing	N/A	220	16
AP-332	Flow-way	Water Control Structure	Modified Semi-Monthly	Standard Feature Mowing	N/A	220	16
AP-333	Flow-way	Water Control Structure	Modified Semi-Monthly	Standard Feature Mowing	N/A	220	16
AP-334	Flow-way	Water Control Structure	Modified Semi-Monthly	Standard Feature Mowing	N/A	220	16
AP-335	Flow-way	Water Control Structure	Modified Semi-Monthly	Standard Feature Mowing	N/A	220	16
AP-336	Flow-way	Water Control Structure	Modified Semi-Monthly	Standard Feature Mowing	N/A	220	16
AP-337	Flow-way	Water Control Structure	Modified Semi-Monthly	Standard Feature Mowing	N/A	220	16
AP-338	Flow-way	Telemetry Station	Modified Semi-Monthly	Standard Feature Mowing	N/A	220	16
AP-339	Flow-way	Water Control Structure	Modified Semi-Monthly	Standard Feature Mowing	N/A	220	16
AP-340	Flow-way	Water Control Structure	Modified Semi-Monthly	Standard Feature Mowing	N/A	220	16
AP-341	Flow-way	Water Control Structure	Modified Semi-Monthly	Standard Feature Mowing	N/A	220	16
AP-342	Flow-way	Water Control Structure	Modified Semi-Monthly	Standard Feature Mowing	N/A	220	16
AP-343	Flow-way	Sign	Modified Semi-Monthly	Standard Feature Mowing	N/A	80	16
AP-344	Flow-way	Observation Tower/ Platform	Modified Semi-Monthly	Standard Feature Mowing	N/A	1,000	16
AP-345	Flow-way	Sign	Modified Semi-Monthly	Standard Feature Mowing	N/A	80	16
AP-346	Flow-way	Water Control Structure	Modified Semi-Monthly	Standard Feature Mowing	N/A	220	16
AP-347	Flow-way	Water Control Structure	Modified Semi-Monthly	Standard Feature Mowing	N/A	220	16
AP-348	Flow-way	Water Control Structure	Modified Semi-Monthly	Standard Feature Mowing	N/A	220	16
AP-349	Flow-way	Water Control Structure	Modified Semi-Monthly	Standard Feature Mowing	N/A	220	16
AP-350	Flow-way	Telemetry Station	Modified Semi-Monthly	Standard Feature Mowing	N/A	220	16
AP-351	Flow-way	Water Control Structure	Modified Semi-Monthly	Standard Feature Mowing	N/A	220	16
AP-352	Flow-way	Water Control Structure	Modified Semi-Monthly	Standard Feature Mowing	N/A	220	16
AP-353	Flow-way	Water Control Structure	Modified Semi-Monthly	Standard Feature Mowing	N/A	220	16
AP-354	Flow-way	Water Control Structure	Modified Semi-Monthly	Standard Feature Mowing	N/A	220	16
AP-355	Flow-way	Telemetry Station	Modified Semi-Monthly	Standard Feature Mowing	N/A	220	16
AP-356	Flow-way	Pump	Modified Semi-Monthly	Standard Feature Mowing	N/A	1,500	16
AP-357	Flow-way	Sign	Modified Semi-Monthly	Standard Feature Mowing	N/A	80	16
AP-358	Flow-way	Sign	Modified Semi-Monthly	Standard Feature Mowing	N/A	80	16
AP-359	Flow-way	Water Control Structure	Modified Semi-Monthly	Standard Feature Mowing	N/A	220	16
AP-360	Flow-way	Sign	Modified Semi-Monthly	Standard Feature Mowing	N/A	80	16

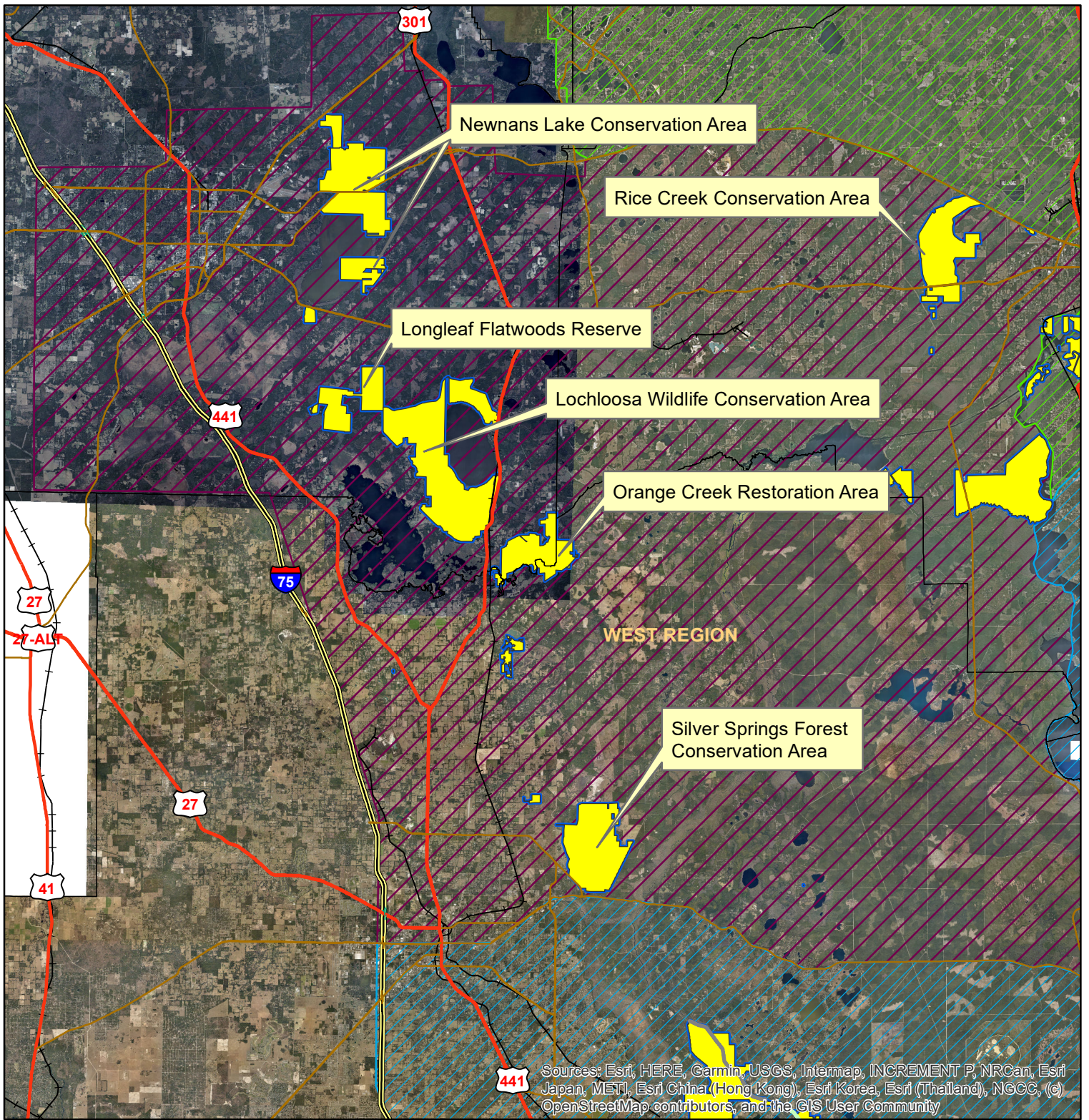
**Lake Apopka North Shore Restoration Area  
Service Mowing Locations**

Identifier	Section	Type of Feature	Frequency	Mowing Standards	Comments	Estimate of Sq. Footage	Estimated Number of Cuts per Year
AP-361	Flow-way	Sign	Modified Semi-Monthly	Standard Feature Mowing	N/A	80	16
AP-362	Flow-way	Observation Tower/ Platform	Modified Semi-Monthly	Open Area Mowing	N/A	2,000	16
AP-363	Flow-way	Kiosk	Modified Semi-Monthly	Standard Feature Mowing	N/A	220	16
AP-364	Flow-way	Sign	Modified Semi-Monthly	Standard Feature Mowing	N/A	80	16
AP-365	Flow-way	Sign	Modified Semi-Monthly	Standard Feature Mowing	N/A	80	16
AP-366	Flow-way	Sign	Modified Semi-Monthly	Standard Feature Mowing	N/A	80	16
AP-367	Flow-way	Sign	Modified Semi-Monthly	Standard Feature Mowing	N/A	80	16
AP-368	Flow-way	Sign	Modified Semi-Monthly	Standard Feature Mowing	N/A	80	16
AP-369	Flow-way	Sign	Modified Semi-Monthly	Standard Feature Mowing	N/A	80	16
AP-370	Flow-way	Sign	Modified Semi-Monthly	Standard Feature Mowing	N/A	80	16
AP-371	Flow-way	Weir Structure	Modified Semi-Monthly	Open Area Mowing	N/A	1,300	16
AP-372	Flow-way	Sign	Modified Semi-Monthly	Standard Feature Mowing	N/A	80	16
AP-373	Flow-way	Sign	Modified Semi-Monthly	Standard Feature Mowing	N/A	80	16
AP-374	Duda	Sign	Modified Semi-Monthly	Standard Feature Mowing	N/A	80	16
AP-375	Zellwood	Sign	Modified Semi-Monthly	Standard Feature Mowing	N/A	80	16
AP-376	Zellwood	Sign	Modified Semi-Monthly	Standard Feature Mowing	N/A	80	16
AP-377	Zellwood	Sign	Modified Semi-Monthly	Standard Feature Mowing	N/A	80	16
AP-378	Zellwood	Sign	Modified Semi-Monthly	Standard Feature Mowing	N/A	80	16
AP-379	Zellwood	Sign	Modified Semi-Monthly	Standard Feature Mowing	N/A	80	16
AP-380	Zellwood	Sign	Modified Semi-Monthly	Standard Feature Mowing	N/A	80	16
AP-381	Zellwood	Observation Tower/ Platform	Modified Semi-Monthly	Open Area Mowing	N/A	1,500	16
AP-382	Zellwood	Sign	Modified Semi-Monthly	Standard Feature Mowing	N/A	80	16
AP-383	Zellwood	Building/ Shelter	Modified Semi-Monthly	Open Area Mowing	N/A	18,500	16
AP-384	Zellwood	Sign	Modified Semi-Monthly	Standard Feature Mowing	N/A	80	16
AP-385	Zellwood	Telemetry Station	Modified Semi-Monthly	Standard Feature Mowing	N/A	220	16
AP-386	Zellwood	Building/ Shelter	Modified Semi-Monthly	Open Area Mowing	N/A	1,200	16
AP-387	Zellwood	Sign	Modified Semi-Monthly	Standard Feature Mowing	N/A	80	16
AP-388	Zellwood	Sign	Modified Semi-Monthly	Standard Feature Mowing	N/A	80	16
AP-389	Zellwood	Water Control Structure	Modified Semi-Monthly	Standard Feature Mowing	N/A	220	16
AP-390	Zellwood	Water Control Structure	Modified Semi-Monthly	Standard Feature Mowing	N/A	220	16
AP-391	Zellwood	Sign	Modified Semi-Monthly	Standard Feature Mowing	N/A	80	16
AP-392	Zellwood	Telemetry Station	Modified Semi-Monthly	Standard Feature Mowing	N/A	220	16
AP-393	Zellwood	Water Control Structure	Modified Semi-Monthly	Standard Feature Mowing	N/A	220	16
AP-394	Zellwood	Sign	Modified Semi-Monthly	Standard Feature Mowing	N/A	80	16
AP-395	Zellwood	Sign	Modified Semi-Monthly	Standard Feature Mowing	N/A	80	16
AP-396	Zellwood	Sign	Modified Semi-Monthly	Standard Feature Mowing	N/A	81	16

**Lake Apopka North Shore Restoration Area  
Service Mowing Locations**

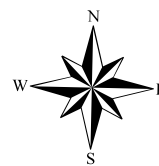
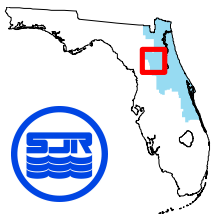
Identifier	Section	Type of Feature	Frequency	Mowing Standards	Comments	Estimate of Sq. Footage	Estimated Number of Cuts per Year
AP-397	Zellwood	Kiosk	Modified Semi-Monthly	Standard Feature Mowing	N/A	220	16
AP-398	Zellwood	Gate	Modified Semi-Monthly	Standard Feature Mowing	Included in Parking AP-399	0	16
AP-399	Zellwood	Parking	Modified Semi-Monthly	Open Area Mowing	Includes AP-398	87,120	16
AP-400	Zellwood	Sign	Modified Semi-Monthly	Standard Feature Mowing	N/A	80	16
AP-401	Zellwood	Sign	Modified Semi-Monthly	Standard Feature Mowing	N/A	80	16
AP-402	Zellwood	Sign	Modified Semi-Monthly	Standard Feature Mowing	N/A	80	16
AP-403	Zellwood	Gate	Modified Semi-Monthly	Standard Feature Mowing	N/A	220	16
AP-404	Zellwood	Gate	Modified Semi-Monthly	Standard Feature Mowing	N/A	250	16
AP-405	Zellwood	Telemetry Station	Modified Semi-Monthly	Standard Feature Mowing	N/A	220	16
AP-406	Zellwood	Water Control Structure	Modified Semi-Monthly	Standard Feature Mowing	N/A	500	16
AP-407	Zellwood	Gate	Modified Semi-Monthly	Standard Feature Mowing	N/A	350	16
AP-408	Zellwood	Telemetry Station	Modified Semi-Monthly	Standard Feature Mowing	N/A	220	16
<b>Total Square Footage:</b>						<b>463,971</b>	





## St Johns River Water Management District

### West Region - Properties



### West Region Counties

- Alachua County**
- Putnam County**
- Marion County**



**Rice Creek Conservation Area**  
**Service Mowing Locations**

Identifier	Type of Feature	Frequency	Description of Mowing Needs	Comments	Estimate of Sq. Footage	Estimated Number of Cuts per Year
RC-01	Sign	Modified Monthly	Open Area Mowing	N/A	1,500	9
RC-02	Parking	Modified Monthly	Open Area Mowing	Includes RC-04	10,000	9
RC-03	Kiosk	Modified Monthly	Open Area Mowing	N/A	500	9
RC-04	Gate	Modified Monthly	Standard Feature Mowing	Included in RC-02	0	9
RC-05	Picnic Table	Modified Monthly	Open Area Mowing	N/A	12,000	9
<b>Total Square Footage:</b>					<b>22,500</b>	



## Newnans Lake Conservation Area

### Service Mowing Locations

Identifier	Type of Feature	Description of Mowing Needs	Comments	Estimate of Sq. Footage	Estimated Number of Cuts per Year
NL-01	Sign	Open Area Mowing	N/A	350	9
NL-02	Parking	Open Area Mowing	Includes in NL-03, NL-04, NL-05	30,000	9
NL-03	Kiosk	Standard Feature Mowing	Included in NL-02	0	9
NL-04	Gate	Standard Feature Mowing	Included in NL-02	0	9
NL-05	Gate	Standard Feature Mowing	Included in NL-02	0	9
NL-06	Bridge	Standard Feature Mowing	N/A	1,500	9
NL-07	Gate	Standard Feature Mowing	N/A	220	9
NL-08	Gate	Open Area Mowing	N/A	8,000	9
NL-09	Gate	Open Area Mowing	N/A	1,000	9
NL-10	Gate	Open Area Mowing	N/A	1,500	9
NL-11	Bridge	Standard Feature Mowing	N/A	1,500	9
NL-12	Parking	Open Area Mowing	N/A	2,500	9
NL-13	Gate	Open Area Mowing	N/A	3,000	9
NL-14	Gate	Open Area Mowing	N/A	3,000	9
NL-15	Camp Site	Open Area Mowing	Includes NL-31	43,560	9
NL-16	Gate	Open Area Mowing	N/A	3,200	9
NL-17	Gate	Open Area Mowing	N/A	6,000	9
NL-18	Gate	Open Area Mowing	N/A	5,400	9
NL-19	Picnic Table	Open Area Mowing	N/A	21,800	9
NL-20	Gate	Open Area Mowing	N/A	450	9
NL-21	Parking	Open Area Mowing	Includes NL-22 & NL-23	5,300	9
NL-22	Sign	Standard Feature Mowing	Included in NL-21	0	9
NL-23	Gate	Standard Feature Mowing	Included in NL-21	0	9
NL-24	Kiosk	Standard Feature Mowing	N/A	350	9
NL-25	Gate	Open Area Mowing	N/A	1,000	9
NL-26	Gate	Open Area Mowing	N/A	1,400	9
NL-27	Gate	Open Area Mowing	N/A	900	9
NL-28	Gate	Open Area Mowing	N/A	650	9
NL-29	Gate	Standard Feature Mowing	N/A	500	9
NL-30	Gate	Open Area Mowing	N/A	1,600	9
NL-31	Building/ Shelter	Standard Feature Mowing	Included in NL-15	0	9
<b>Total Square Footage:</b>				<b>144,680</b>	

## Longleaf Flatwoods Conservation Area

### Service Mowing Locations

Identifier	Type of Feature	Frequency	Description of Mowing Needs	Comments	Estimate of Sq. Footage	Estimated Number of Cuts per Year
LL-01	Gate	Modified Semi-Monthly	Open Area Mowing	N/A	1,700	9
LL-02	Telemetry Station	Modified Semi-Monthly	Open Area Mowing	N/A	1,200	9
LL-03	Camp Site	Modified Semi-Monthly	Open Area Mowing	Includes LL-04 & LL-05	8,500	9
LL-04	Bench	Modified Semi-Monthly	Standard Feature Mowing	Included in LL-03 Camp Site	0	9
LL-05	Building/ Shelter	Modified Semi-Monthly	Standard Feature Mowing	Included in LL-03 Camp Site	0	9
LL-06	Parking	Modified Semi-Monthly	Open Area Mowing	Includes LL-08 & LL-09	21,800	9
LL-07	Sign	Modified Semi-Monthly	Standard Feature Mowing	Included in LL-06.	0	9
LL-08	Gate	Modified Semi-Monthly	Standard Feature Mowing	Included in LL-06	0	9
LL-09	Kiosk	Modified Semi-Monthly	Open Area Mowing	N/A	600	9
LL-10	Gate	Modified Semi-Monthly	Open Area Mowing	N/A	2,600	9
LL-11	Building/ Shelter	Modified Semi-Monthly	Open Area Mowing	N/A	43,560	9
LL-12	Building/ Shelter	Modified Semi-Monthly	Open Area Mowing	N/A	43,560	9
LL-13	Gate	Modified Semi-Monthly	Open Area Mowing	N/A	1,800	9
LL-14	Gate	Modified Semi-Monthly	Open Area Mowing	N/A	1,500	9
LL-15	Gate	Modified Semi-Monthly	Open Area Mowing	N/A	1,200	9
<b>Total Square Footage:</b>					<b>128,020</b>	

## Lochloosa Conservation Area

### Service Mowing Locations

Identifier	Type of Feature	Frequency	Description of Mowing Needs	Comments	Estimate of Sq. Footage	Estimated Number of Cuts per Year
LO-01	Sign	Modified Monthly	Open Area Mowing	N/A	1,500	9
LO-02	Gate	Modified Monthly	Open Area Mowing	N/A	1,500	9
LO-03	Kiosk	Modified Monthly	Standard Feature Mowing	N/A	200	9
LO-04	Telemetry Station	Modified Monthly	Open Area Mowing	N/A	1,600	9
LO-05	Telemetry Station	Modified Monthly	Open Area Mowing	N/A	4,500	9
LO-06	Parking	Modified Monthly	Open Area Mowing	Includes LO-07 & LO-08	91,476	9
LO-07	Fishing Pier	Modified Monthly	Standard Feature Mowing	Included in LO-06	0	9
LO-08	Building/ Shelter	Modified Monthly	Standard Feature Mowing	Included in LO-06	0	9
LO-09	Gate	Modified Monthly	Standard Feature Mowing	N/A	220	9
LO-10	Gate	Modified Monthly	Open Area Mowing	N/A	2,200	9
LO-11	Gate	Modified Monthly	Open Area Mowing	N/A	4,800	9
LO-12	Gate	Modified Monthly	Standard Feature Mowing	N/A	220	9
LO-13	Observation Tower/ Platform	Modified Monthly	Open Area Mowing	Includes trail to tower	3,500	9
LO-14	Parking	Modified Monthly	Open Area Mowing	Includes LO-15, LO-16, & LO-17	13,000	9
LO-15	Gate	Modified Monthly	Standard Feature Mowing	Included in LO-14	0	9
LO-16	Kiosk	Modified Monthly	Standard Feature Mowing	Included in LO-14	0	9
LO-17	Sign	Modified Monthly	Standard Feature Mowing	Included in LO-14	0	9
LO-19	Building/ Shelter	Modified Monthly	Open Area Mowing	N/A	43,560	9
<b>Total Square Footage:</b>					<b>168,276</b>	

## Orange Creek Restoration Area

### Service Mowing Locations

Identifier	Type of Feature	Frequency	Description of Mowing Needs	Comments	Estimate of Sq. Footage	Estimated Number of Cuts per Year
OC-01	Parking	Modified Monthly	Open Area Mowing	Includes OC-02, OC-03 & OC-04	43,560	9
OC-02	Sign	Modified Monthly	Standard Feature Mowing	Included in OC-01	0	9
OC-03	Kiosk	Modified Monthly	Standard Feature Mowing	Included in OC-01	0	9
OC-04	Gate	Modified Monthly	Standard Feature Mowing	Included in OC-01	0	9
OC-05	Monitoring Well	Modified Monthly	Open Area Mowing	N/A	1,500	9
OC-06	Parking	Modified Monthly	Open Area Mowing	N/A	38,800	9
OC-07	Parking	Modified Monthly	Open Area Mowing	Includes OC-08	13,000	9
OC-08	Gate	Modified Monthly	Standard Feature Mowing	Included in OC-07	0	9
OC-09	Observation Tower/ Platform	Modified Monthly	Open Area Mowing	Includes OC-10 & OC-11	41,400	9
OC-10	Building/ Shelter	Modified Monthly	Standard Feature Mowing	Included in OC-09	0	9
OC-11	Other	Modified Monthly	Standard Feature Mowing	Included in OC-09	0	9
OC-12	Boat Ramp	Modified Monthly	Open Area Mowing	N/A	7,000	9
OC-13	Gate	Modified Monthly	Open Area Mowing	N/A	1,000	9
OC-14	Gate	Modified Monthly	Open Area Mowing	N/A	1,500	9
OC-15	Gate	Modified Monthly	Open Area Mowing	N/A	1,500	9
OC-16	Gate	Modified Monthly	Open Area Mowing	N/A	500	9
OC-17	Parking	Modified Monthly	Open Area Mowing	N/A	21,800	9
OC-18	Gate	Modified Monthly	Standard Feature Mowing	Included in OC-17	0	9
OC-19	Sign	Modified Monthly	Standard Feature Mowing	Included in OC-17	0	9
OC-20	Kiosk	Modified Monthly	Standard Feature Mowing	N/A	220	9
OC-21	Gate	Modified Monthly	Open Area Mowing	N/A	3,500	9
OC-22	Camp Site	Modified Monthly	Open Area Mowing	Includes OC-23, OC-24, OC-25, and OC-26	26,200	9
OC-23	Gate	Modified Monthly	Standard Feature Mowing	Included in OC-22 Camp Site	0	9
OC-24	Building/ Shelter	Modified Monthly	Standard Feature Mowing	Included in OC-22	0	9
OC-25	Other	Modified Monthly	Standard Feature Mowing	Included in OC 4-24 Camp Site	0	9
OC-26	Electric Meter/ Transformer	Modified Monthly	Standard Feature Mowing	Included in OC 4-24 Camp Site	0	9
OC-27	Gate	Modified Monthly	Open Area Mowing	N/A	1,500	9
OC-28	Gate	Modified Monthly	Open Area Mowing	N/A	1,500	9
<b>Total Square Footage:</b>					<b>204,480</b>	

## Silver Springs Forest Conservation Area

### Service Mowing Locations

Identifier	Type of Feature	Frequency	Description of Mowing Needs	Comments	Estimate of Sq. Footage	Estimated Number of Cuts per Year
SS-01	Parking	Modified Monthly	Open Area Mowing	Includes SS-2 & SS-3	21,780	9
SS-02	Sign	Modified Monthly	Standard Feature Mowing	Included in SS-1	0	9
SS-03	Gate	Modified Monthly	Standard Feature Mowing	Included in SS-1	0	9
SS-04	Kiosk	Modified Monthly	Standard Feature Mowing	N/A	220	9
SS-05	Monitoring Well	Modified Monthly	Standard Feature Mowing	N/A	220	9
SS-06	Kiosk	Modified Monthly	Standard Feature Mowing	N/A	220	9
SS-07	Building/ Shelter	Modified Monthly	Open Area Mowing	N/A	1,400	9
SS-08	Parking	Modified Monthly	Open Area Mowing	Includes SS-09 & SS-10	5,000	9
SS-09	Sign	Modified Monthly	Standard Feature Mowing	Included in SS-08	0	9
SS-10	Gate	Modified Monthly	Standard Feature Mowing	Included in SS-08	0	9
SS-11	Kiosk	Modified Monthly	Standard Feature Mowing	N/A	220	9
SS-12	Gate	Modified Monthly	Open Area Mowing	N/A	2,200	9
SS-13	Gate	Modified Monthly	Open Area Mowing	N/A	3,200	9
SS-14	Gate	Modified Monthly	Open Area Mowing	Gate and 110 feet of board fence	21,780	9
SS-15	Gate	Modified Monthly	Open Area Mowing	Gate and 120 feet of board fence.	1,000	9
SS-16	Gate	Modified Monthly	Open Area Mowing	Gate and 140 feet of board fence.	2,500	9
SS-17	Gate	Modified Monthly	Open Area Mowing	Gate and 140 feet of board fence.	2,500	9
SS-18	Parking	Modified Monthly	Open Area Mowing	Includes SS-19, SS-20, SS-21 & SS-22	29,000	9
SS-19	Sign	Modified Monthly	Standard Feature Mowing	Included in SS-18	0	9
SS-20	Gate	Modified Monthly	Standard Feature Mowing	Included in SS-18	0	9
SS-21	Gate	Modified Monthly	Standard Feature Mowing	Included in SS-18	0	9
SS-22	Monitoring Well	Modified Monthly	Standard Feature Mowing	Included in SS-18	0	9
SS-23	Kiosk	Modified Monthly	Standard Feature Mowing	N/A	220	9
SS-24	Monitoring Well	Modified Monthly	Standard Feature Mowing	N/A	80	9
<b>Total Square Footage:</b>					<b>91,540</b>	