



July 8, 2019
Laurel Ave at Pine Street
Planters and Sidewalks
Scope of Work

- 1 Contractor to provide all labor, materials, equipment and supervision required for work shown Dwg-01 thru Dwg-06 and within this scope of work.
- 2 Contractor is responsible for providing a safe worksite and any safety items necessary such as barricades, safety flagging, traffic control /flagger personnel, traffic control signage, cones or barrels, etc.
- 3 Contractor to provide a port-o-let for the duration of the project. Cost to be included in mobilization cost item
- 4 Remove abandoned foundations within worksite that are painted for demolition.
- 5 Any existing irrigation lines shall be removed clear of the new sidewalks and planters. Supply pipe to be marked and staked as required by City Engineering Representative.
- 6 Construct sidewalk and planters as shown on drawings including underdrains.
- 7 Use waterproof construction adhesive to secure and bond retaining wall blocks and caps as required.
- 8 Soil for planters will be provided and placed by City Forces. This includes all plantings.
- 9 Contractor responsible for removal of all debris from worksite upon completion of the project.

West Laurel Ave & Pine St Planters

Plan Quantity per unit cost

7/15/2019

Base Bid

item	description	estimated quantity	units	unit cost	total cost
1	Mobilize/De-mobilize	1	LS		
2	Traffic control including singe, cones, barrels, barricades, ect.	1	LS		
3	Removal of existing foundations, ect (marked on site)	1	LS		
4	Removal of existing shrubs/plants	1	LS		
5	Demolition of existing concrete sidewalk approx. 4" thick	11	SY		
6	Removal of existing topsoil	26	CY		
7	Elevation adjustment of existing utility boxes (including new boxes if required)	1	LS		
8	4" thick sidewalk in place, 4,000 psi in 28 days	0	SY		
9	Sand clay fill (B Base) in place compacted to 95% std proctor	22.5	CY		
10	6" thick concrete walkway in place, 4,000 psi in 28 days	85	SY		
11	137 LF of thicken footing @ .7 CF	3.75	CY		
12	#4 reinforcing steel dowel in place	11	EA		
13	Pavestone RockWall Large 6 in x 17.5 in x 7 in pecan Concrete Retaining Wall block in place (or approved equal)	216	EA		
14	Pavestone 3 in x 10 in x 6 in Sierra Blend Concrete retaining cap block in place (or approved equal)	185	EA		
15	2" sch 40 drain pipe w/ fittings in place	48	LF		
16	2" sch 40 well screen pipe (underdrain) w/ fittings in place	64	LF		
17	1/2" thick inorganic exp material x 6" wide in place	115	LF		
18	Saw cut existing concrete	5	LF		
19	ADA compliant truncated dome mat in place	1	EA		
	Leach Adhesives F 26 Premium Quality Waterproof Construction				
20	Adhesive 28 Fl Oz tube applied in place	20	EA		
			total		

Alternate # 1 (ADD)

item	description	estimated quantity	units	unit cost	total cost
1	#5 reinforcing steel with support chairs in place as show on Dwg-04	1,200	LF		
			total		

CITY OF FOLEY

Laurel Ave and Pine Street Planters

MAYOR
JOHN E. KONIAR

COUNCIL
J. WAYNE TRAWICK
COUNCIL PRESIDENT
DISTRICT 1

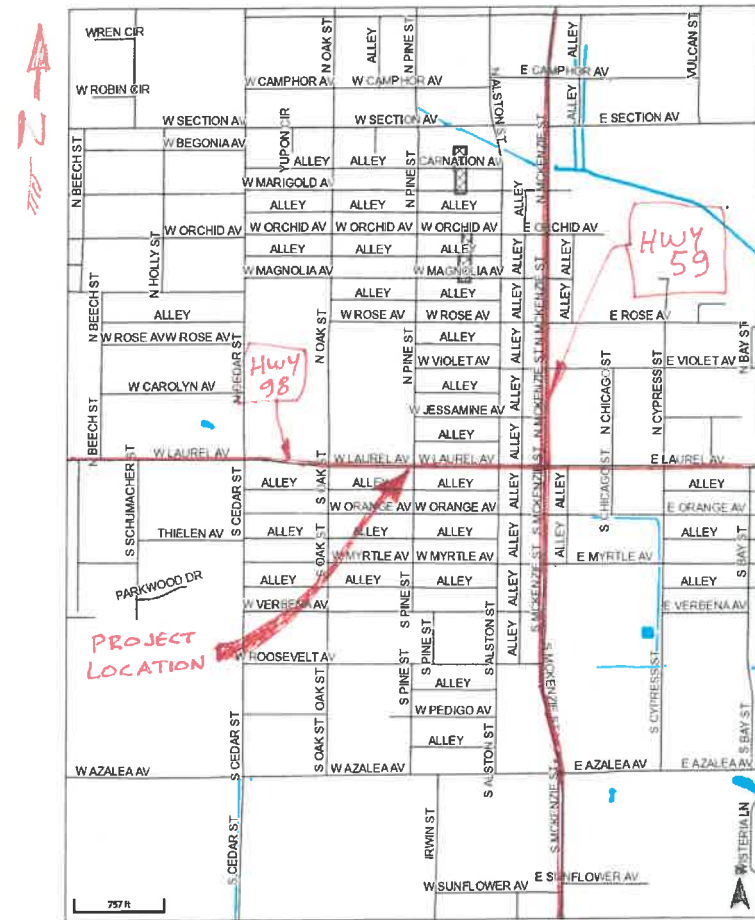
VERA J. QUAITES
DISTRICT 2

RALPH G. HELLMICH
COUNCIL VICE PRESIDENT
DISTRICT 3

C. RICK BLACKWELL
DISTRICT 4

CHARLIE J. EBERT III
DISTRICT 5

CITY ADMINISTRATOR
MICHAEL L. THOMPSON



SHEET	DESCRIPTION	TITLE
01	PLAN VIEW	
02	PLAN VIEW BLOCK WALL KEY PLAN	
03	DOWEL LOCATION AND EXP JT LOCATION	
04	REINFORCING STEEL PLAN	
05	UNDERDRAIN PIPE PLAN & DETAIL	
06	ELEVATIONS AND SECTIONS	

SITE MAP
July 2019

ALABAMA
LICENSED
No. 28297
PROFESSIONAL
ENGINEER
CHRISTIAN
CITY ENGINEER, CITY OF FOLEY



PROPERTY LINE
ROW

PROPERTY LINE
ROW

PLANTS
EXISTING POWER POLE

EXISTING LAMP POST

EXISTING HC RAMP AND SIDEWALK

EXISTING LAMP POST

PLANTS

EXISTING POWER POLE
EXISTING CROSSWALK
PUSH BUTTON

NEW WALKWAY

EXISTING CURB

R14'-6"

R14'-6"

SCULPTURED BLOCK WALL

SCULPTURED BLOCK WALL

EXISTING CURB

EXISTING CROSSWALK
PUSHBUTTON

SEE GENERAL NOTE 2 ON
DWG-06

NEW WALKWAY
EXISTING CURB
AND GUTTER

LAUREL AVE

EXISTING CONCRETE VALLEY GUTTER

TAPER CURB

EXISTING POWER POLE

EXISTING CROSSWALK
PUSHBUTTON

R14'-6"

EXISTING CURB

NEW WALKWAY

SCULPTURED BLOCK WALL

NEW WALKWAY
EXISTING CONCRETE GUTTER
NEW CURB

SCULPTURED BLOCK WALL

EXISTING SIDEWALK

EXISTING CROSSWALK
PUSH BUTTON

EXISTING POWER POLE

PLANTS

ROW
PROPERTY LINE

EXISTING SIDEWALK

EXISTING
LAMP POST

PINE ST

5'

EXISTING LAMP POST
NEW SIDEWALK 6" THICK WITH
NO REINFORCING STEEL
NEW TRUNCATED DOME MAT

ROW
PROPERTY LINE

CITY OF FOLEY

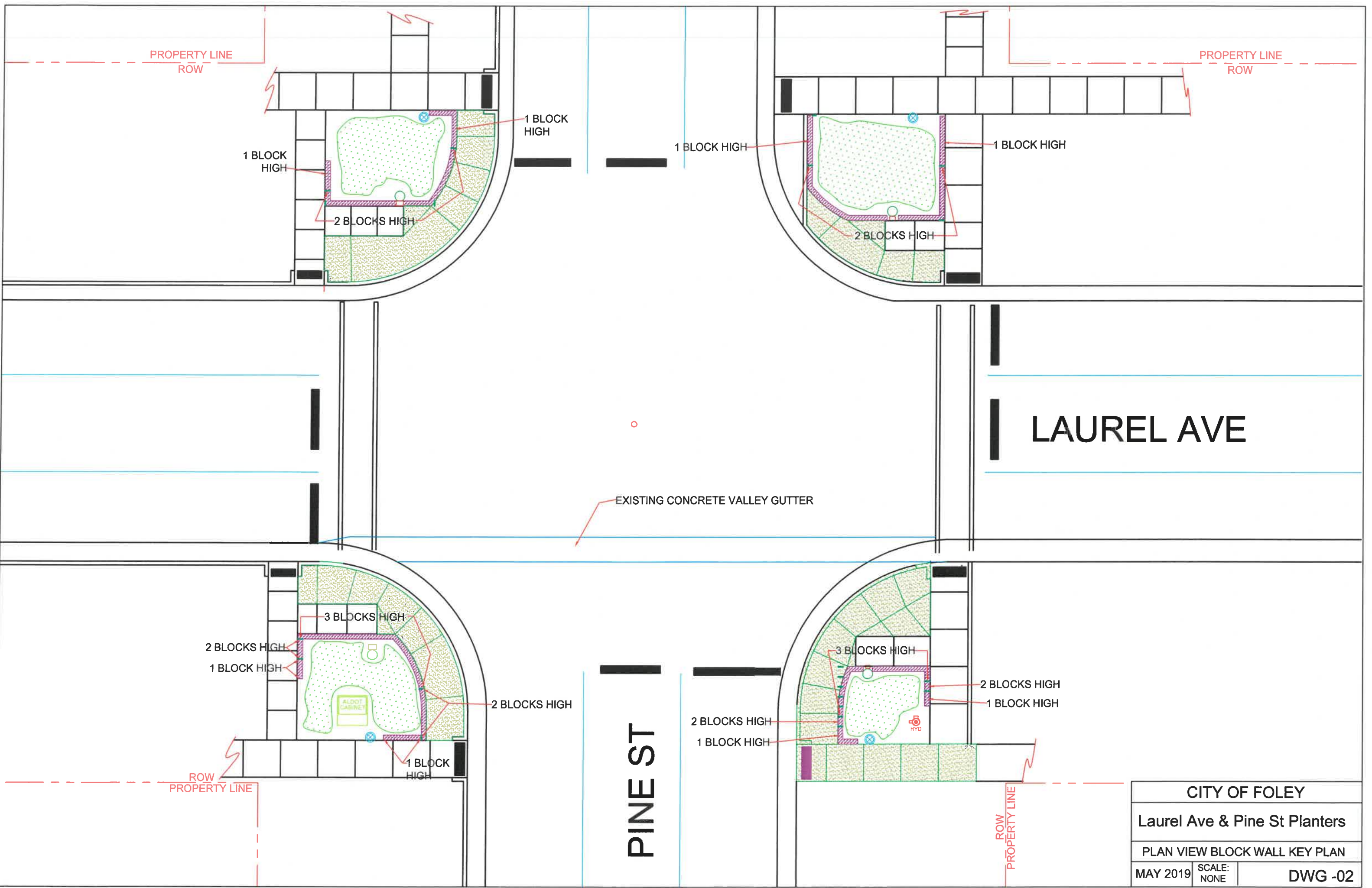
Laurel Ave & Pine St Planters

PLAN VIEW

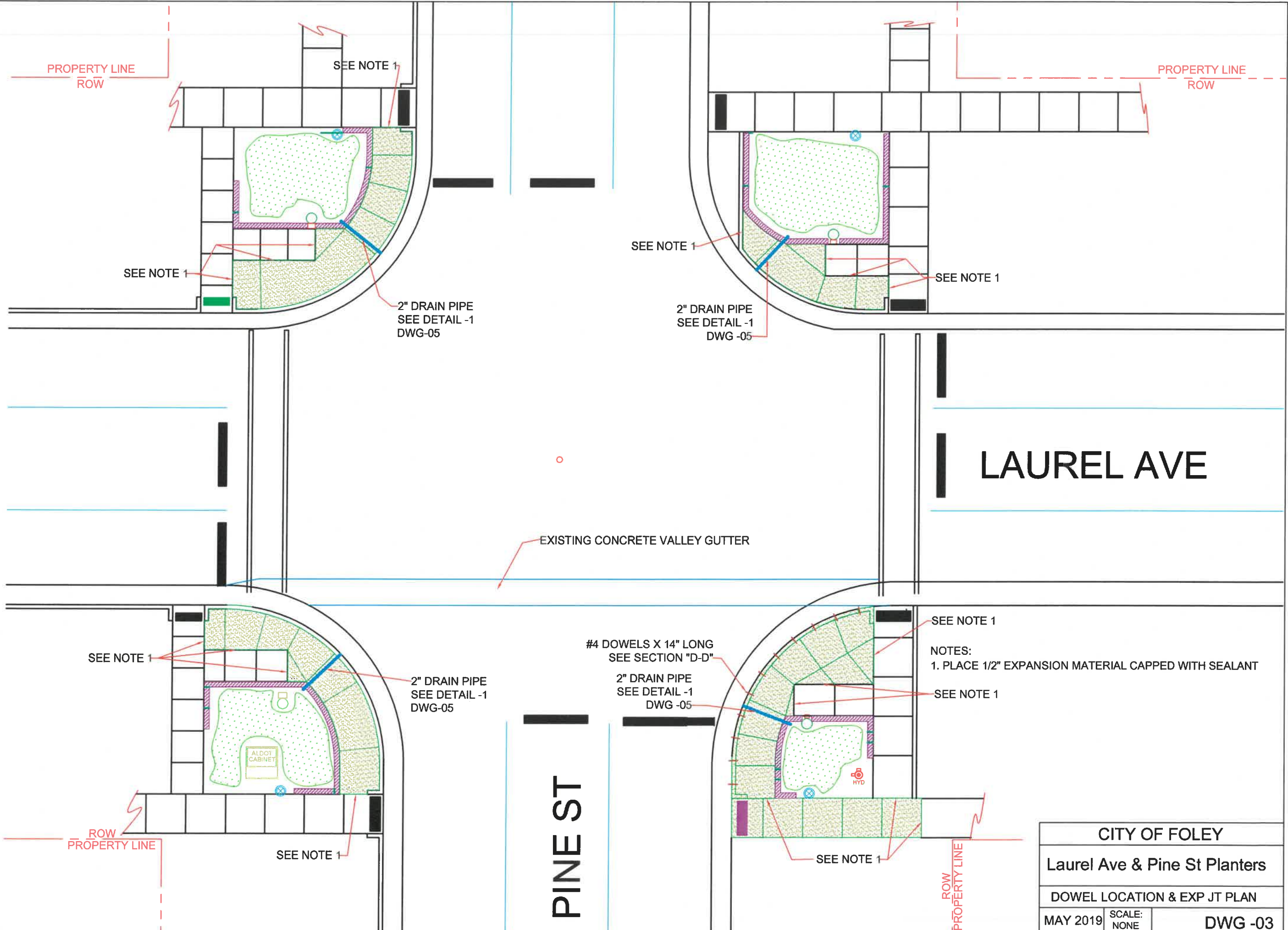
MAY 2019

SCALE:
NONE

DWG -01



CITY OF FOLEY		
Laurel Ave & Pine St Planters		
PLAN VIEW BLOCK WALL KEY PLAN		
MAY 2019	SCALE: NONE	DWG -02



LAUREL AVE

PINE ST

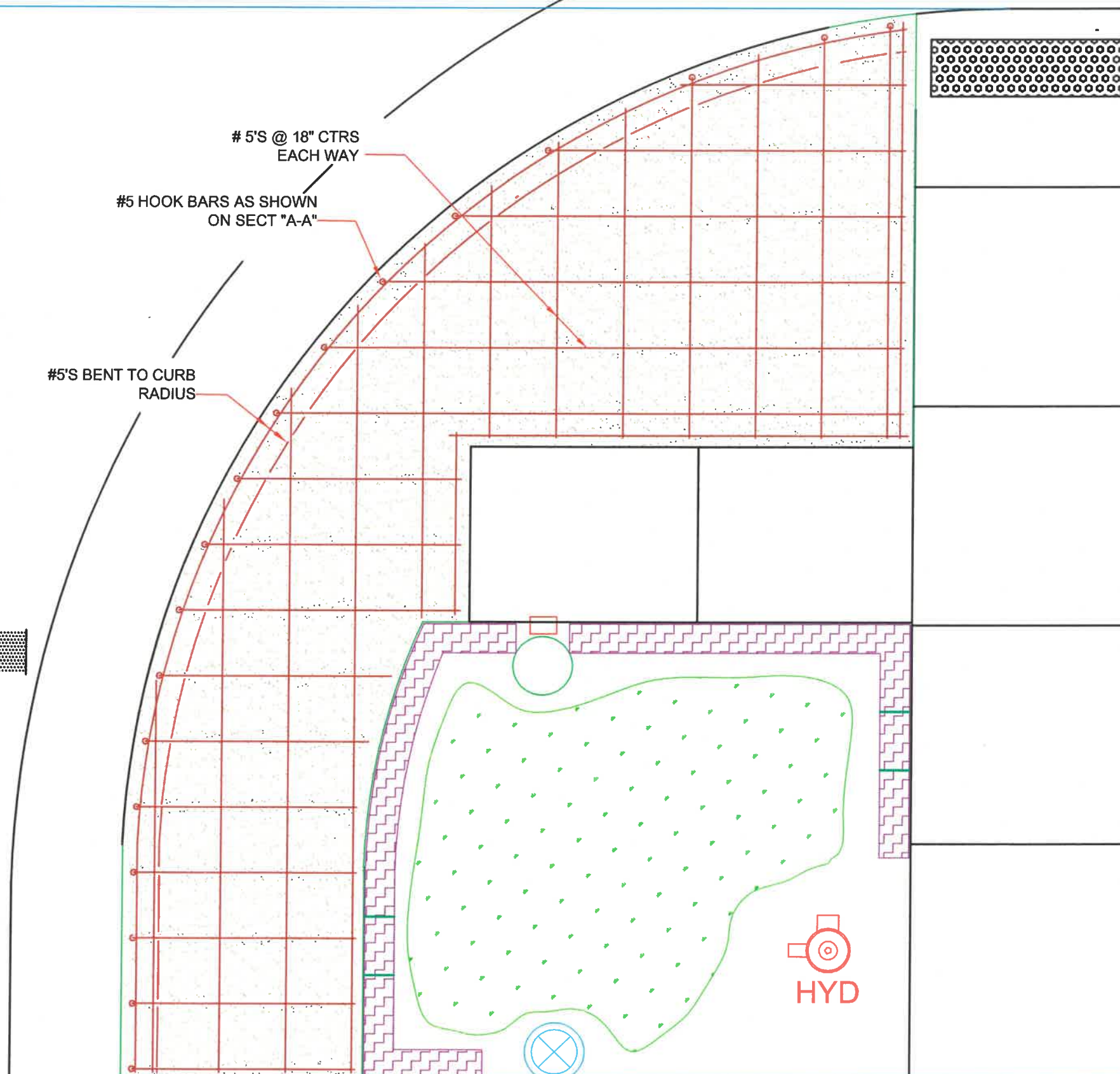
CITY OF FOLEY		
Laurel Ave & Pine St Planters		
DOWEL LOCATION & EXP JT PLAN		
MAY 2019	SCALE: NONE	DWG -03



5'S @ 18" CTRS
EACH WAY

#5 HOOK BARS AS SHOWN
ON SECT "A-A"

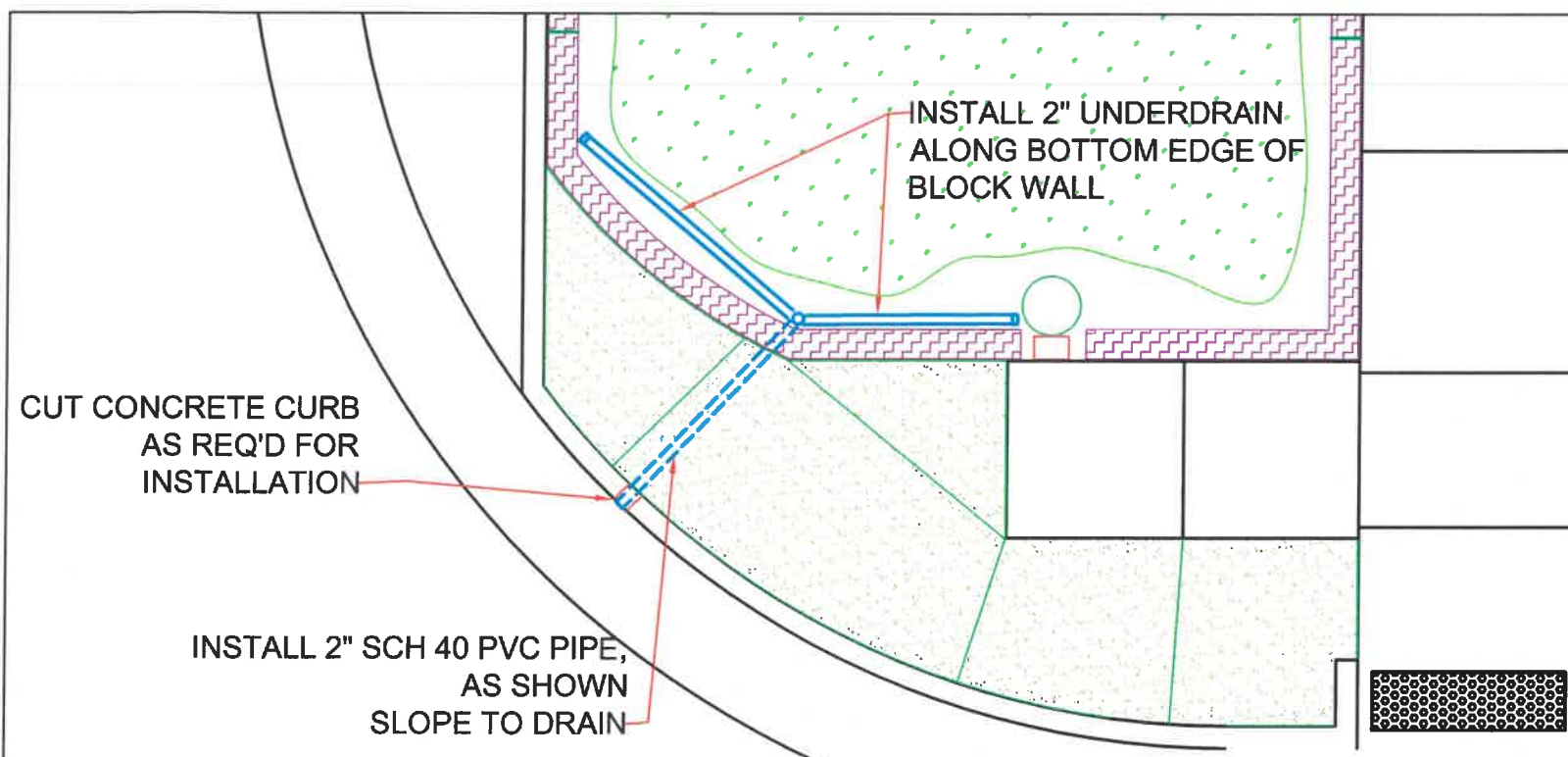
#5'S BENT TO CURB
RADIUS



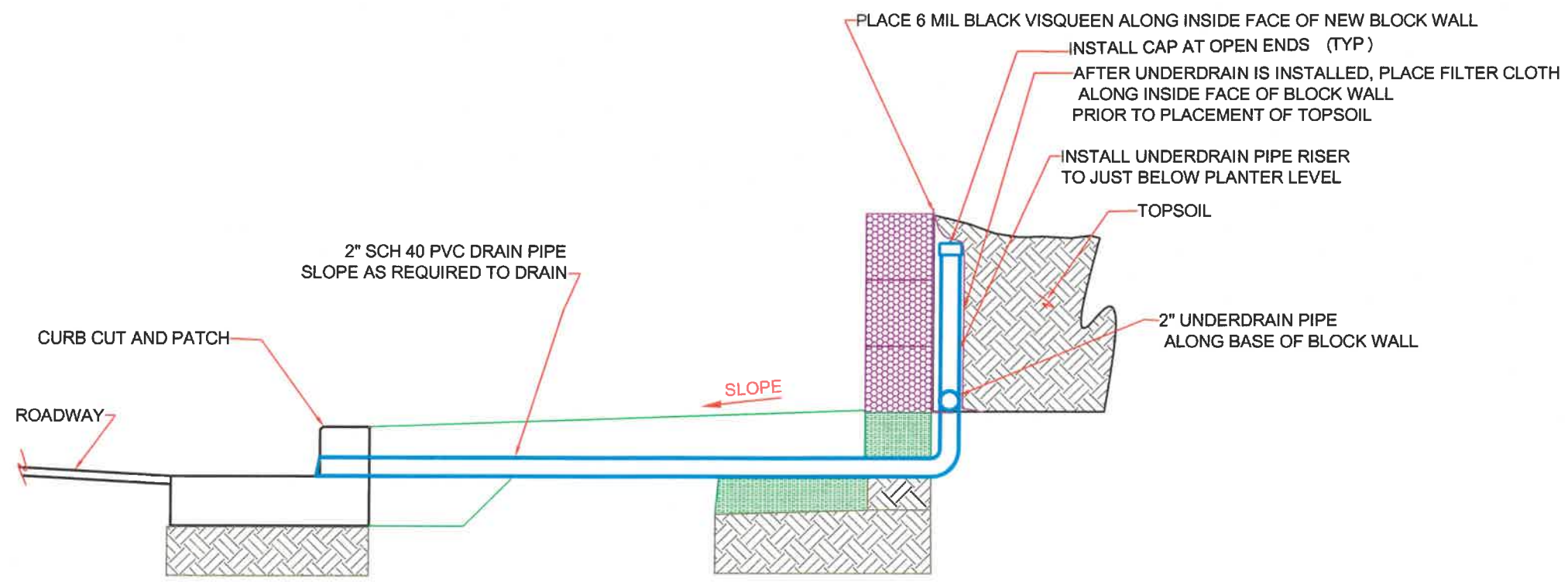
NOTES:
1. SEE DWG SK-03 FOR DOWELS
2. REBAR SUPPORTS TO BE WIRE
OR PLASTIC CHAIRS. BRICKS OR OTHER
BRICKS OR OTHER MATERIAL WILL NOT BE ALLOWED

PLAN VIEW
SIMILAR FOR 3 CORNERS
NTS

CITY OF FOLEY		
Laurel Ave & Pine St Planters		
REINFORCING STEEL PLAN		
MAY 2019	SCALE: NONE	DWG -04

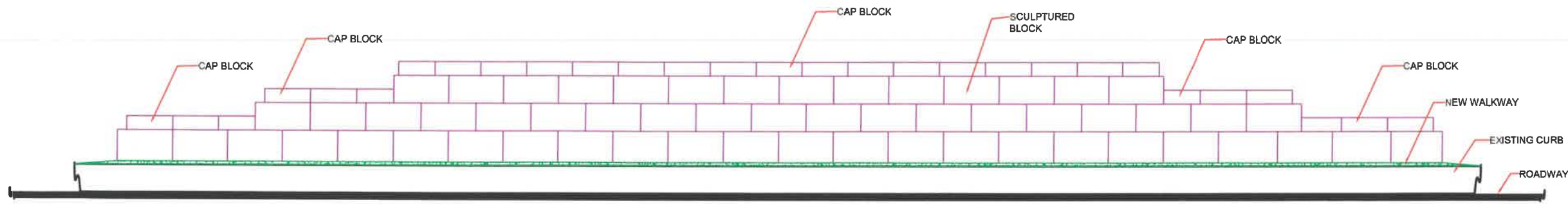


PLAN VIEW
SIMILAR FOR ALL CORNERS
NTS

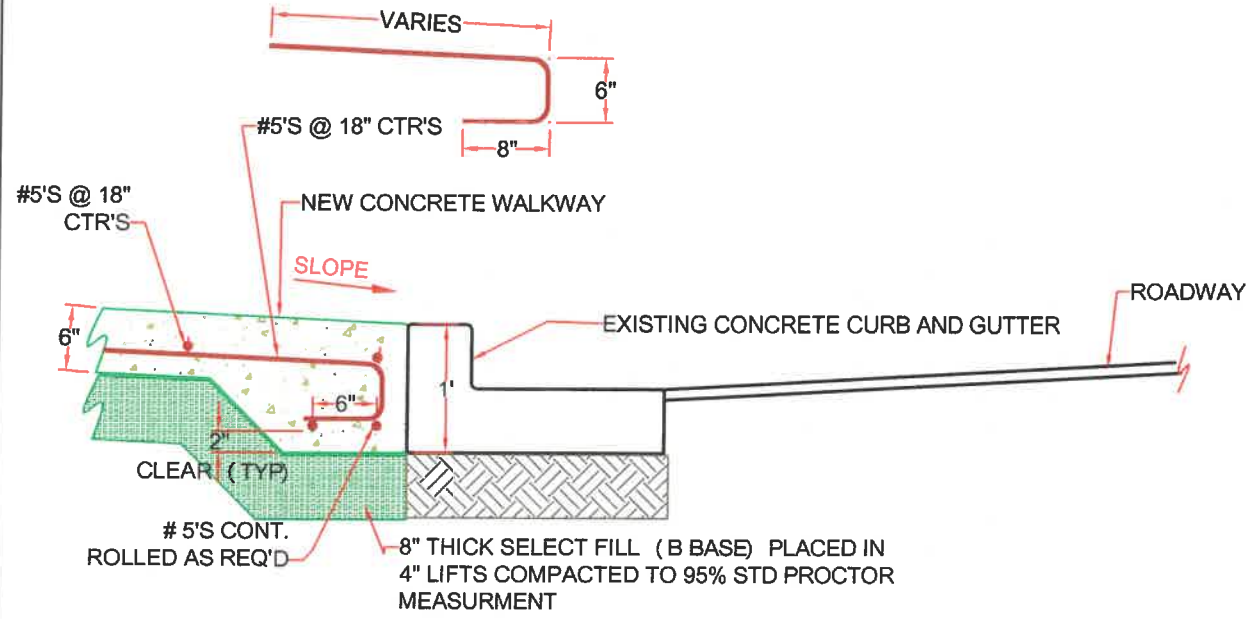


DETAIL-1
NTS

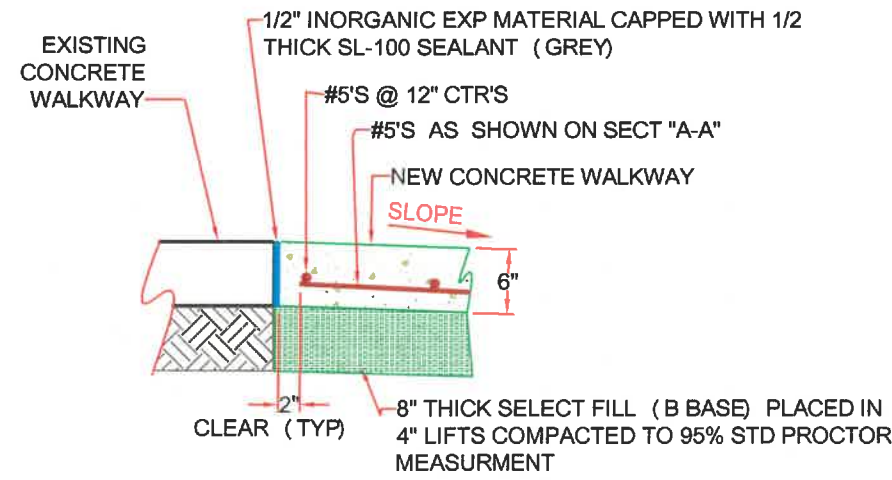
CITY OF FOLEY		
Laurel Ave & Pine St Planters		
UNDERDRAIN PIPE PLAN & DETAIL		
MAY 2019	SCALE: NONE	DWG -05



ELEVATION LOOKING AT PLANTER FROM ROADWAY

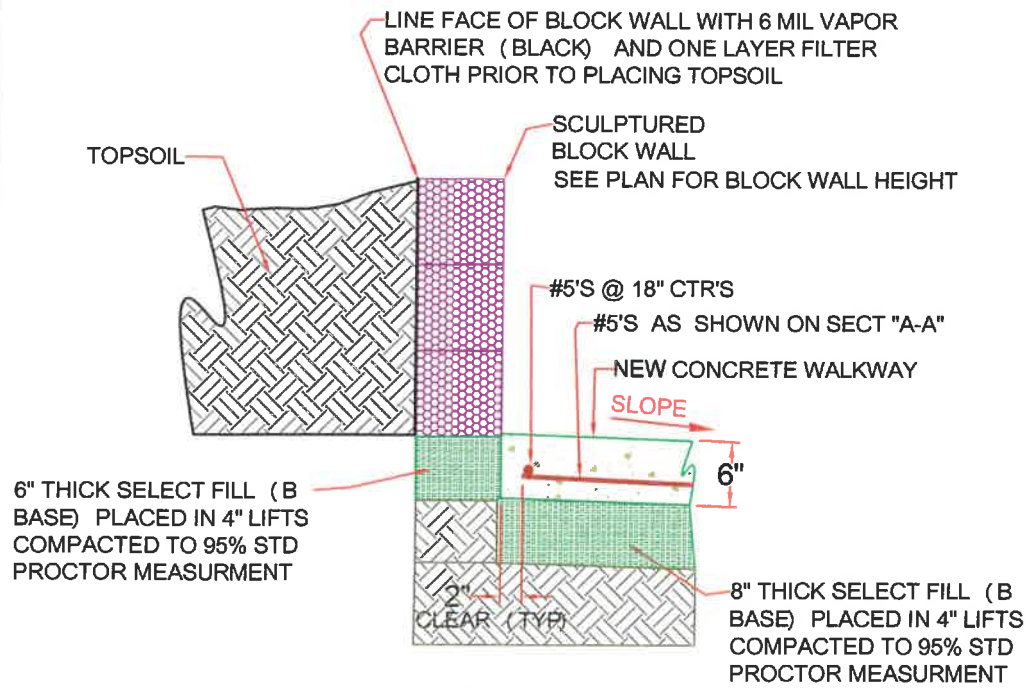


SECTION "A-A"
NTS

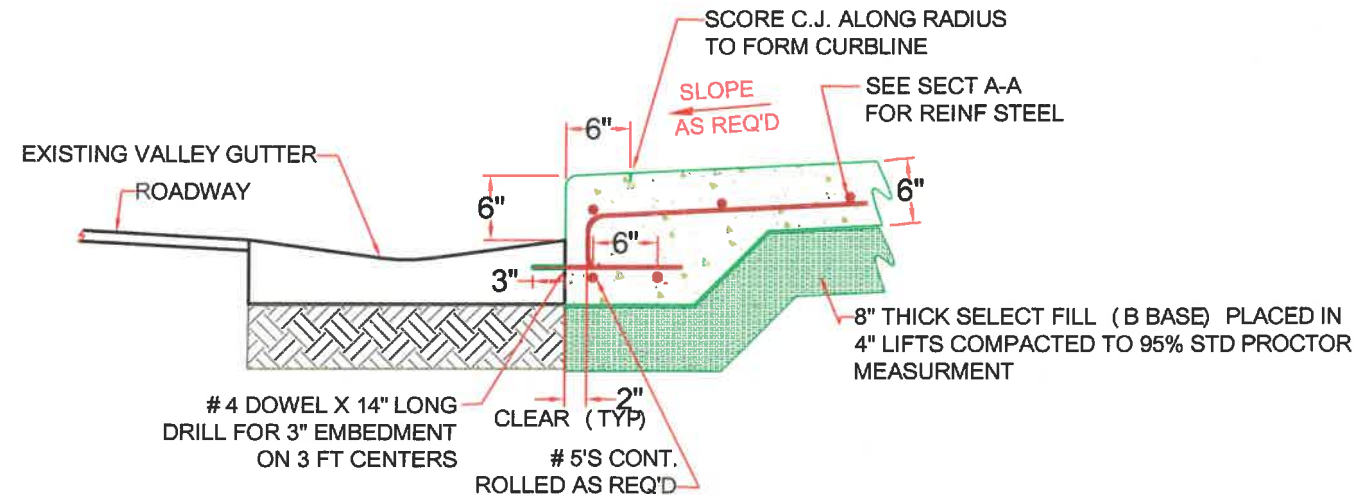


SECTION "B-B"
NTS

GENERAL NOTES:
 1. CONTRACTOR IS RESPONSIBLE FOR UNDERGROUND LOCATE OF EXISTING UTILITIES.
 2. CONTRACTOR TO PROVIDE NEW OR MODIFIED UTILITY ACCESS BOXES AND PLACEMENT AT REQUIRED ELEVATION.



SECTION "C-C"
NTS



SECTION "D-D"
NTS

CITY OF FOLEY	
Laurel Ave & Pine St Planters	
ELEVATION AND SECTIONS	
MAY 2019	DWG -06