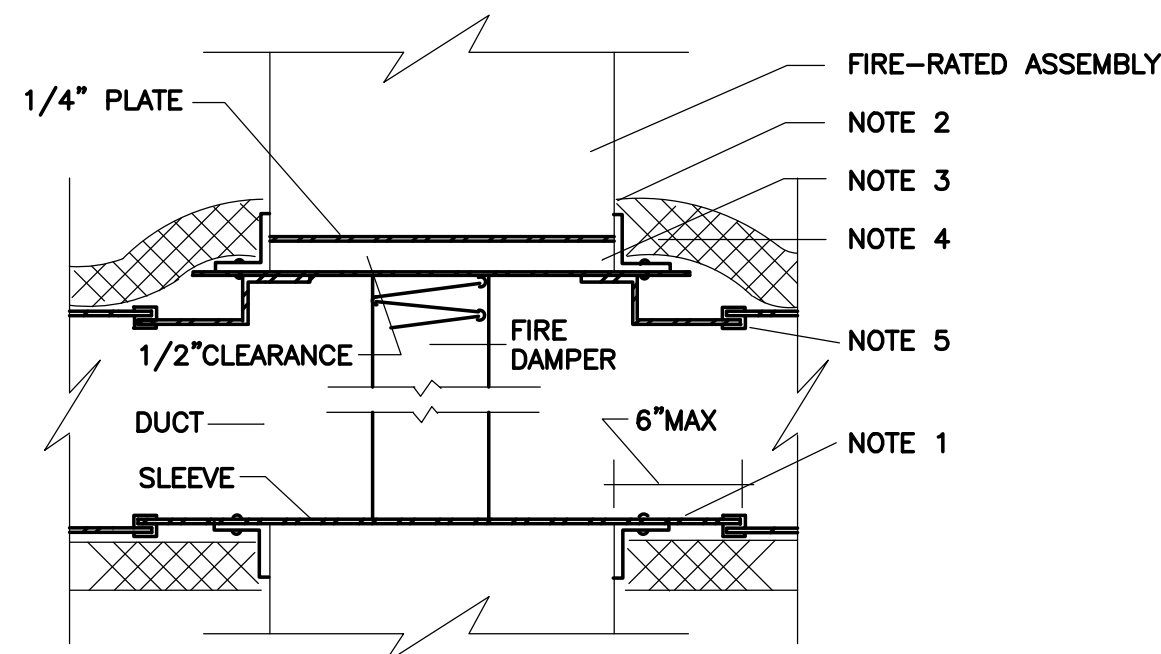


These drawings are property of Owens and Associates, Inc. Consulting Engineers and may not be used in whole or in part without written consent of the engineer and any infringement is subject to legal action



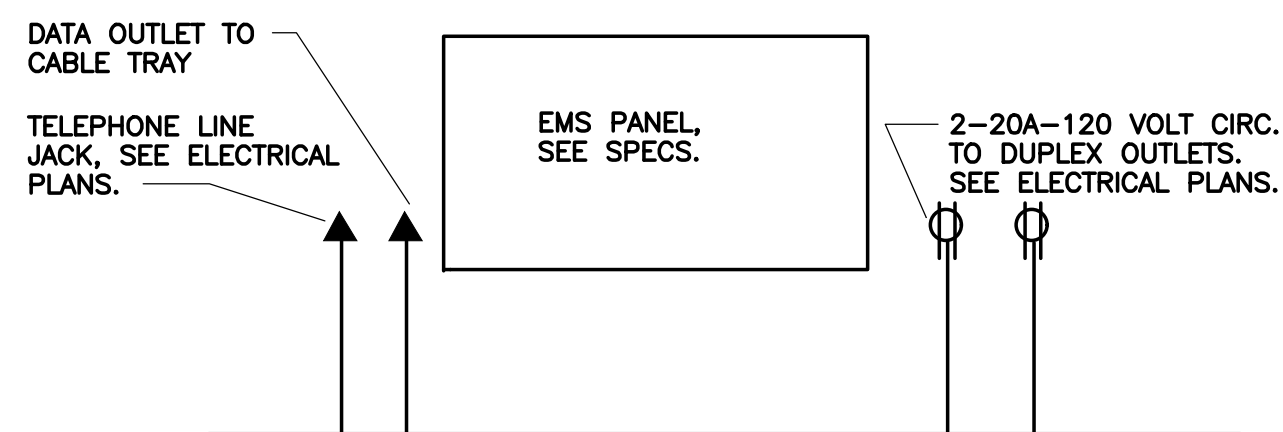
NOTE—
REFER TO MANUFACTURER'S
RECOMMENDATIONS
UL555—R5531

NOTES

1. 2"x 2"x 12 GA. RETAINING ANGLES ON ALL SIDES FASTENED TO DUCT WITH 1/4" BOLTS 6" O.C. MAX. OR WELDED.
2. SEAL VAPOR TIGHT WITH FIRE CAULK.
3. WALL OPENING TO BE 1/8" PER FOOT LARGER THAN DAMPER DIMENSIONS. MINIMUM CLEARANCE OF 1/4" REQUIRED FOR ANY INSTALLATION.
4. BUTT INSULATION TO ANGLE AND SEAL VAPOR TIGHT WITH MASTIC.
5. "S" TYPE BREAK-AWAY CONNECTIONS ON ALL SIDES.

FIRE RATED ASSEMBLY DUCT PENETRATION

NO SCALE

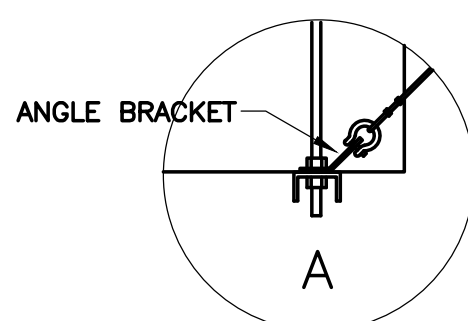
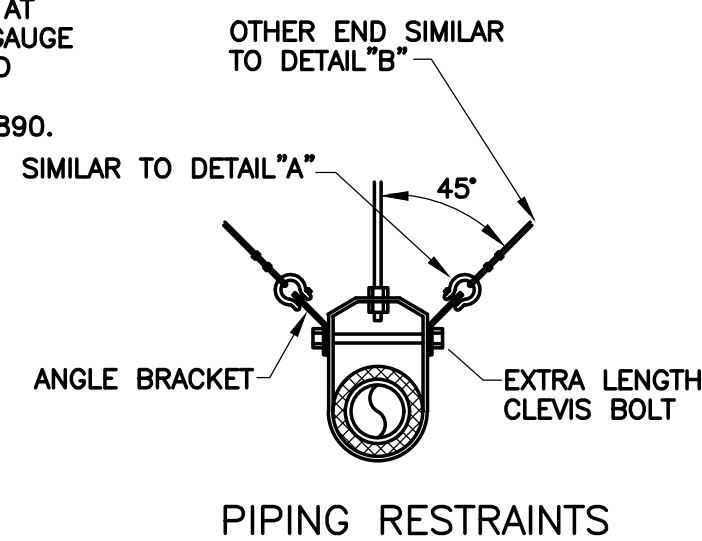
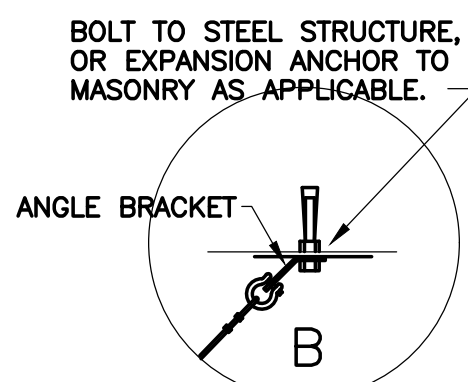
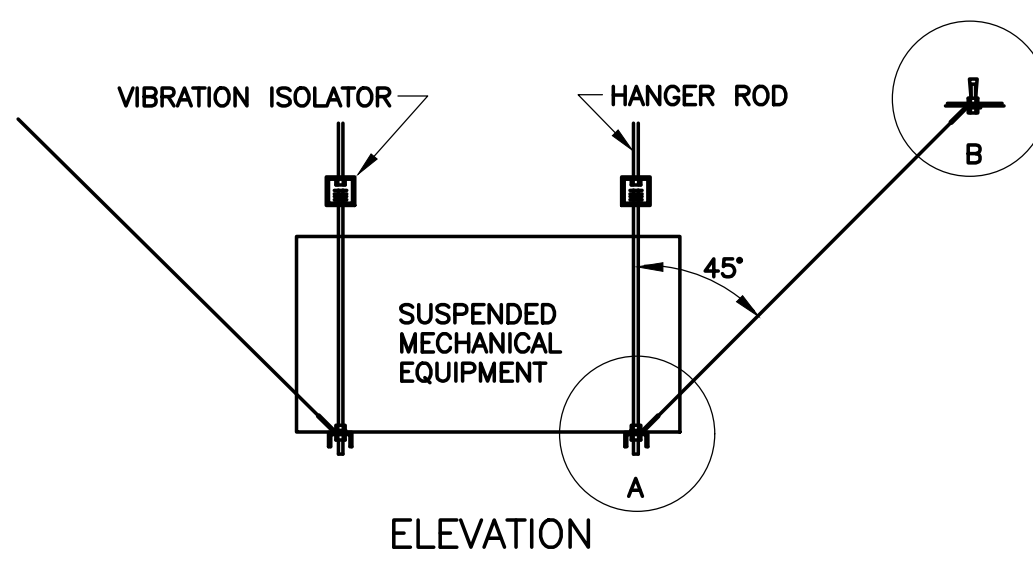
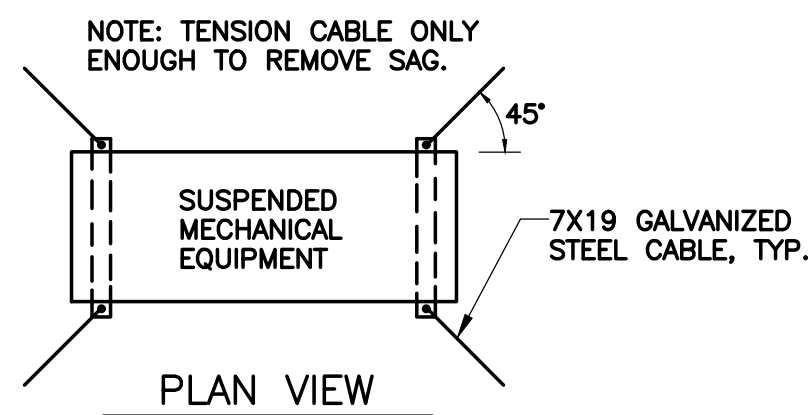


EMS PANEL DETAIL

NO SCALE

NOTES:

1. SEISMIC RESTRAINTS SHALL BE PROVIDED ON ALL SUSPENDED MECHANICAL EQUIPMENT.
2. SEISMIC RESTRAINTS SHALL BE PROVIDED ON ALL PIPING 1-1/4" AND LARGER IN MECHANICAL ROOMS AND ALL PIPING 2-1/2" AND LARGER ELSEWHERE.
3. SEISMIC RESTRAINTS SHALL BE PROVIDED ON ALL RECTANGULAR DUCTWORK 6 SF CROSS-SECTIONAL AREA AND LARGER AND ALL ROUND DUCTS 20" DIAMETER AND LARGER.
4. DUCT AND PIPE RESTRAINTS SHALL BE INSTALLED AT EACH HANGER AND AT EACH CHANGE OF DIRECTION. DUCT RESTRAINTS SHALL BE SIMILAR TO PIPE RESTRAINTS. SEE DETAIL.
5. ALL LAY-IN GRILLES, DIFFUSERS, OR EQUIPMENT SUPPORTED AT THE LAY-IN CEILING SHALL BE PROVIDED WITH FOUR - 12 GAUGE SUPPORT WIRES TIED INDEPENDENTLY TO THE STRUCTURE AND CEILING CLIPS PER ASTM E-580-91 REQUIREMENTS.
6. COMPLY WITH ALL PROVISIONS OF SPECIFICATION SECTION 15890.



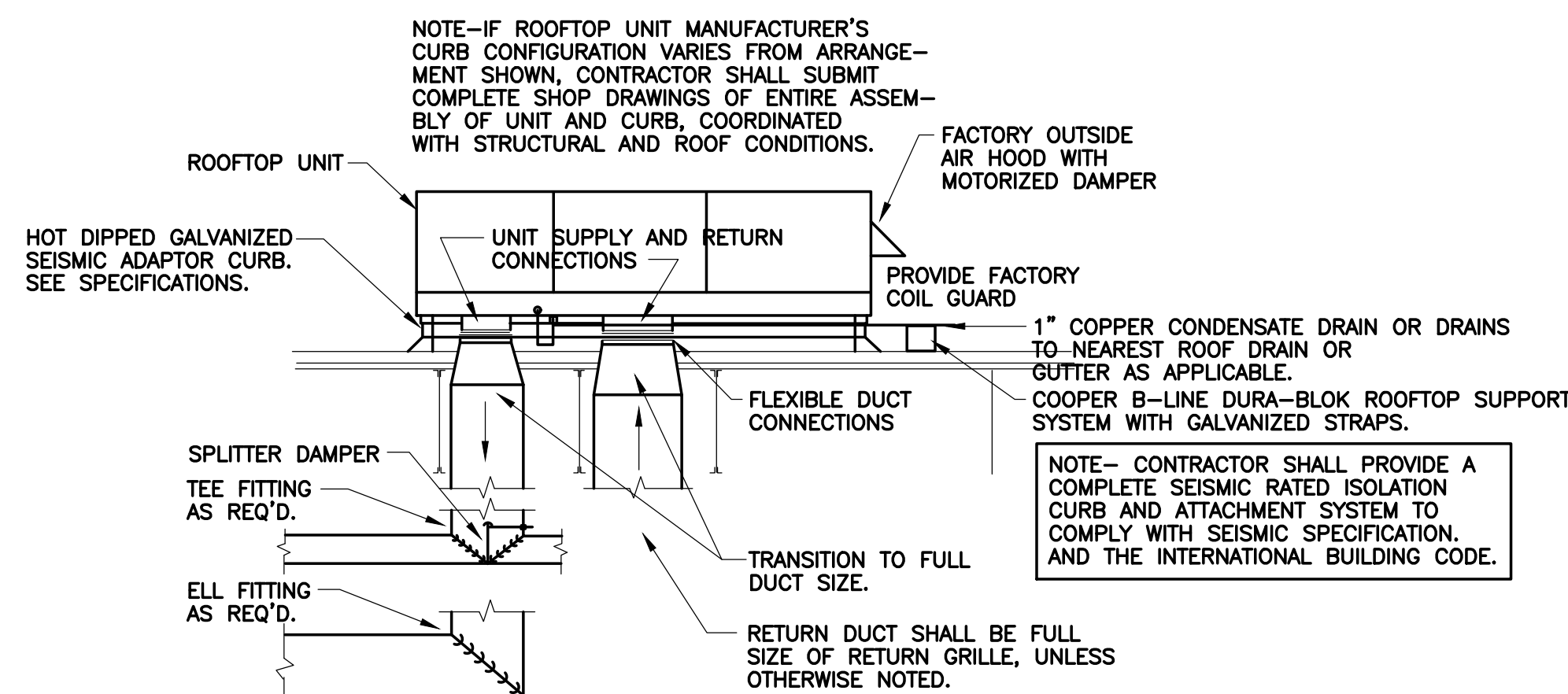
TYPICAL CABLE END DETAIL

NO SCALE

MECHANICAL SYSTEM SEISMIC RESTRAINTS

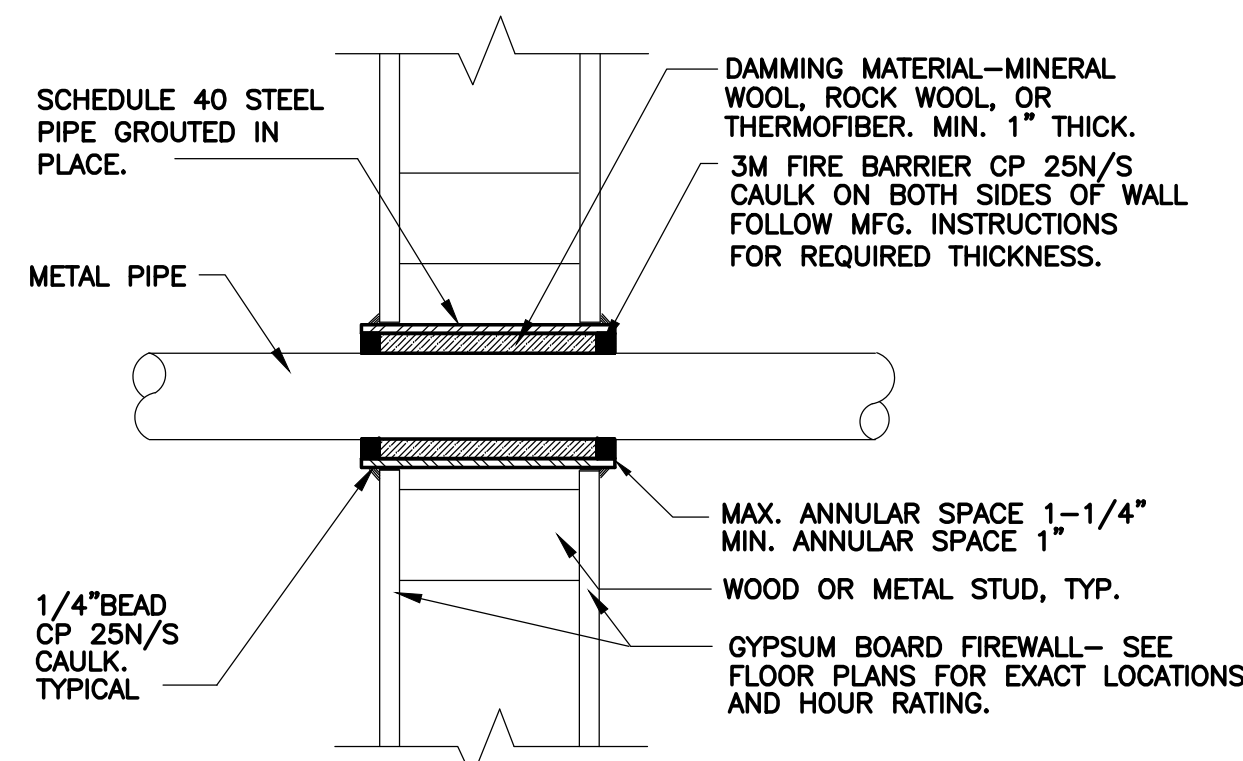
MECHANICAL SCHEDULES AND DETAILS

NO SCALE



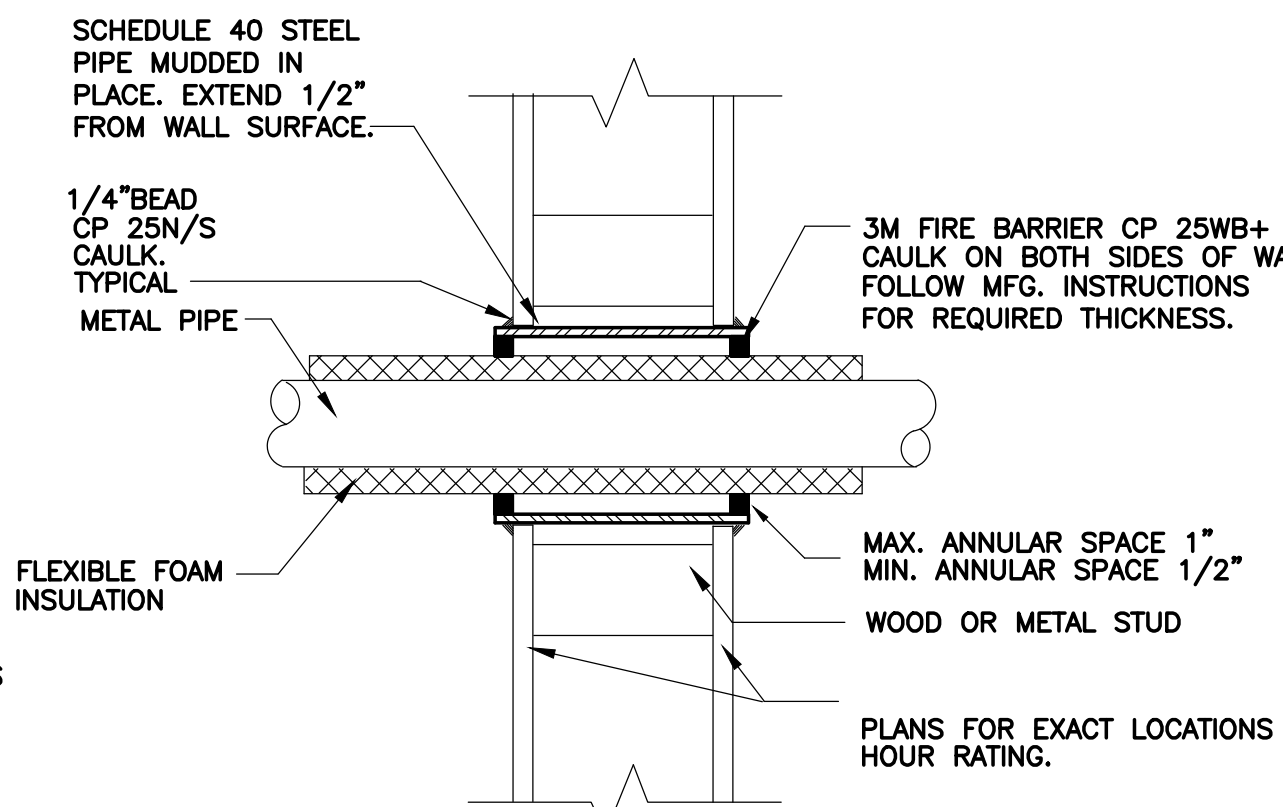
ROOFTOP UNIT INSTALLATION DETAIL

NO SCALE



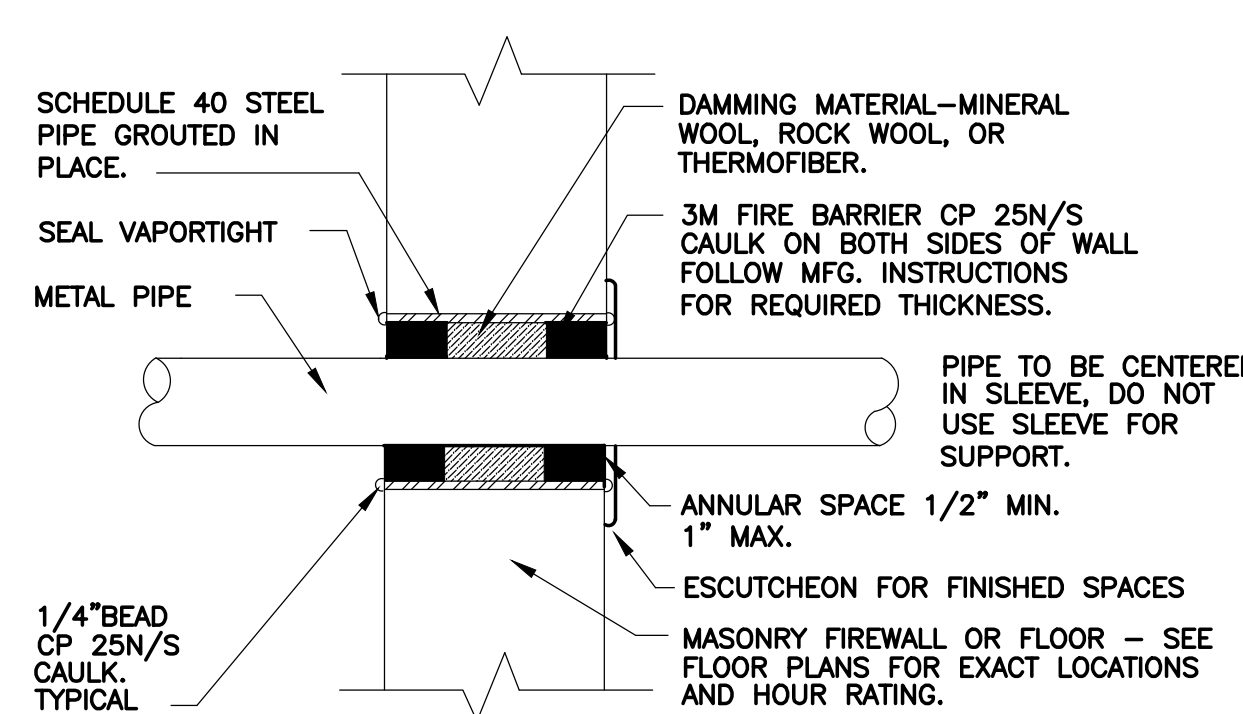
UL SYSTEM #WL-1003

1 OR 2 HOUR



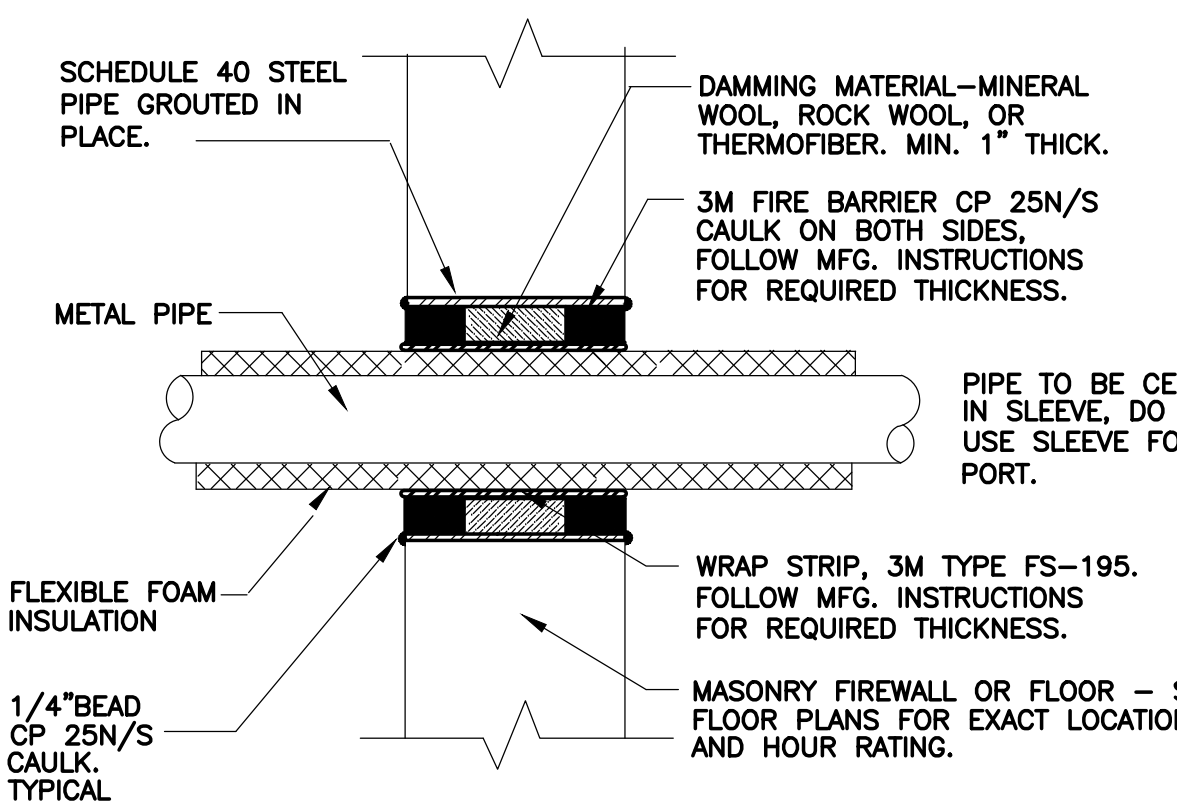
UL SYSTEM #WL-5040

1 OR 2 HOUR



UL SYSTEM #CAJ1001

1, 2 OR 4 HOUR

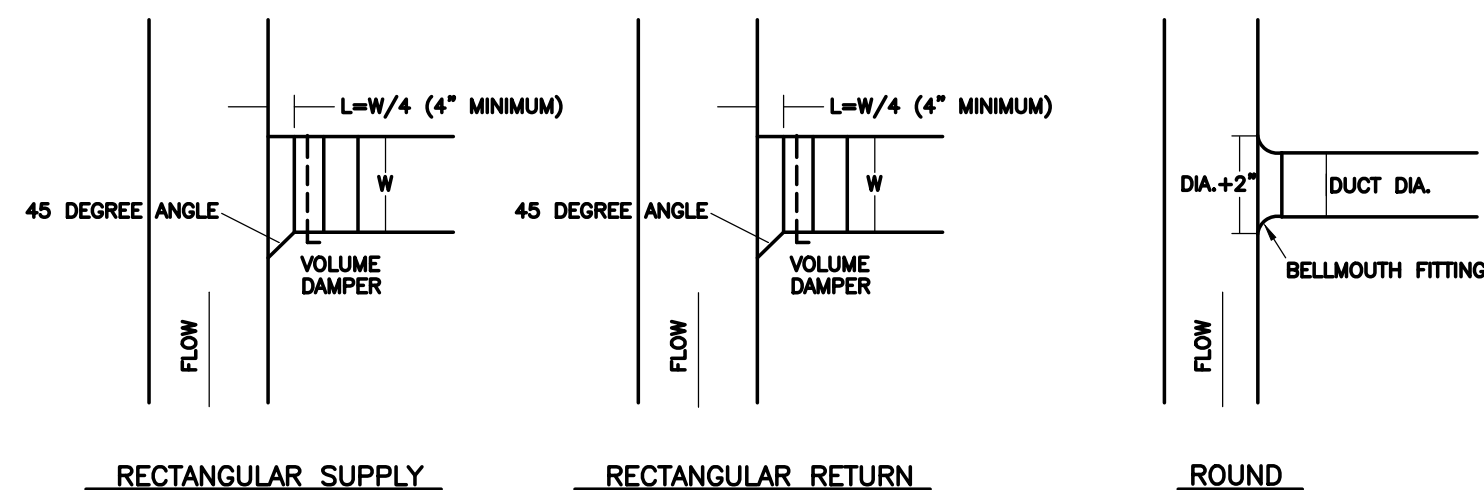


UL SYSTEM #CAJ5017

1, 2 OR 4 HOUR

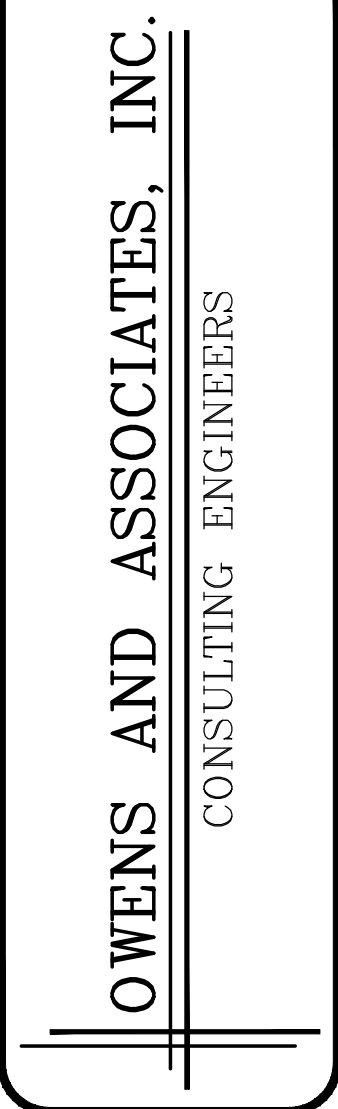
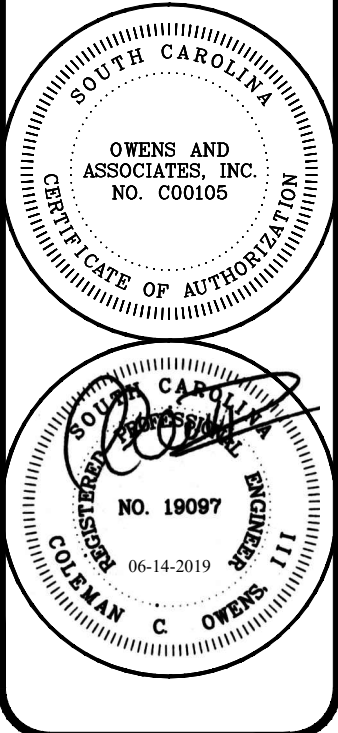
PIPE FIREWALL PENETRATION DETAILS

NO SCALE



DUCT BRANCH FITTING DETAIL

NO SCALE



Owens and Associates Inc.,
Inc., consulting engineers
Mt. Pleasant, South Carolina

project:
MECHANICAL RENOVATIONS
AT MYRTLE BEACH
CONVENTION CENTER PH-II
CITY OF MYRTLE BEACH
MYRTLE BEACH, SC 29577

REVISIONS

project: 1905
date: 06-14-2019

ME-6