



KANSAS CITY KANSAS PUBLIC SCHOOLS / USD 500

PURCHASING OFFICE | 2010 N. 59TH STREET | ROOM 370 \ KANSAS CITY, KS 66104

WEB SITE: WWW.KCKPS.ORG/PURCHASING

ASPHALT/CONCRETE REPAIR WORK

BID No:	IFB 23-010	ISSUE DATE:	MARCH 21, 2023
----------------	-------------------	--------------------	-----------------------

Kansas City Kansas Public Schools will receive sealed bids, on this form at the Purchasing Office, 2010 N. 59th Street, Room 370, Kansas City, KS 66104 until **2:00pm, April 4th, 2023**, at which time bids received will be publicly opened and read, all in accordance with bid instructions, specifications and/or bid conditions attached hereto or as shown below.

Contact/Technical Contact:

Brian Hernandez, Assistant Purchasing Director | (913) 279-2244 | eMail: brian.hernandez@kckps.org

BID INSTRUCTIONS:

FAXED BIDS WILL NOT BE ACCEPTED / EMAILED BIDS WILL NOT BE ACCEPTED.

Per attached specifications listed in this invitation to bid. Bidders must specify unit price on services/rates/deliverables on the Bid Form or bid may be determined to be non-responsive.

- Pricing shall be FOB Kansas City, KS (All freight and fuel charges must be included in the bid price).
- Award may be split between contractors.
- The District reserves the right to reject any or all bids, to waive any informalities, irregularities or technical defects in bids, and unless otherwise specified by the District to accept any item or groups of items in the bid, as may be in the best interest of the District.
- Time (days, weeks, etc.) required for delivery is a significant consideration with respect to this award process. The time required for delivery must be indicated in the space provided or your bid may be found non-responsive and may not be considered.
- Bid shall include copies of pertinent warranty information pertaining to the product or service offered. The bidder agrees that equipment furnished under any resultant purchase order issued by Kansas City Kansas Public Schools shall be covered by commercial warranties the contractor gives to any customer for such supplies. All warranty information and certificates shall be furnished and become the property of the District upon delivery and acceptance of said items and/or the contractor must honor services and all rights and remedies stated in the warranties.
- All items are new manufacture unless otherwise specifically stated in this bid.
- All products must have passed the first line quality standard as set by the manufacturer and no seconds, blemished articles or items having defective workmanship are included.
- Bid may not be considered if a service charge, minimum dollar or minimum quantity order is applied.
- The outcome of this bid will be posted on the District's Purchasing site www.kckps.org/purchasing under Awards Section and will include a bid tabulation/summary.
- Bidder shall acknowledge all addenda for this bid and include the form acknowledgements with their bid.

SUMMARY OF WORK:

It is the intent of the Kansas City Kansas Public Schools, Kansas City, Kansas to enter into an agreement for concrete, masonry or asphalt recoat and replacement work. KCKPS reserves the right to increase or decrease the approximate amount at each site as needed.

Copies of the bid must be submitted in a sealed envelope with the 2023 Concrete/Asphalt Project on the envelope. Any bid form that does not include a separate dollar value for each item will be deemed non-responsive and will not be considered. Any proposal that lists, "\$0", or "no bid" in lieu of a dollar value will be deemed non-responsive and will not be considered.

All work will begin by June 5th and is to be completed prior to August 4th, 2023.

PRE-BID MEETING

A pre-bid meeting will be held: March 28th , 2023 @ 10:00 AM

**KCKPS Facilities Department
2220 N. 59th Street, Suite 229,
Kansas City, Kansas 66104**

Travel to various sites for "walk-thru" will follow the pre-bid meeting. Attendance is recommended, but not mandatory.

Bid Security

Bid Bond: Bid security shall be submitted with each bid in the amount of five percent (5%) of the bid amount. No bids may be withdrawn for a period of sixty (60) days after opening of bids. Owner reserves the right to reject any and all bids and to waive informalities and irregularities.

Payment & Performance Bond: Bidder agrees to furnish a Payment & Performance Bond, in the amount of 100% (one hundred percent) of total contract value after receipt of contract.

Prevailing Wage/Union

Prevailing Wage IS NOT required. There is no union labor requirement for this solicitation.

Time of Completion

Successful bidder shall begin the Work on receipt of the Notice to Proceed and shall complete the Work (Substantial Completion) no later than **August 4th, 2023**.

Liquidated Damages

Completion of this project before August 4th, 2023 is imperative. At the District's sole discretion, liquidated damages in the amount of Two-Hundred-Fifty Dollars (\$250.00) per calendar day will be assessed against the Contract if the project is not completed by the date indicated.

Clean-Up

The Contractor will keep the premises free from accumulations of debris and waste materials caused by its employees in performance of the work. At completion of the project, Contractor shall remove all crating, packaging, waste and debris from the building and the site, and all tools, scaffolding and surplus materials, and shall leave the building and site "broom clean" or its equivalent.

Permits, Codes and Ordinances

Each Contractor shall file and pay for required permits affecting its work (if applicable). Each contractor shall conform to applicable codes and ordinances, including OSHA requirements.

Damage to District Property

Contractor at its own expense shall promptly remedy and repair all damages or loss to any property caused in whole or part by its employees, subcontractor(s), supplier or anyone directly or indirectly employed by either of them, or by anyone for whose acts either of them may be liable.

No Smoking: The District adheres to the mandatory "No Smoking" policy on school premises and/or at school functions. All bidders shall comply with this "No Smoking" policy.

INCLEMENT WEATHER OR EMERGENCY

IF THERE IS A BUILDING CLOSING THE DAY OF THE OPENING OF PROPOSALS DUE TO INCLEMENT WEATHER OR AN EMERGENCY, THE OPENING OF PROPOSALS WILL OCCUR AT 2:00PM (CENTRAL) THE NEXT BUSINESS DAY THE DISTRICT IS OPEN.

SCOPE OF WORK:

Consists of the removal and replacement of approximately 2150 SF Area of concrete stairs, ramps and sidewalks and 455 LF of concrete curbs. Asphalt work to consist of 586,386 SF of top Seal and crack filling of and parking lots and playgrounds. 2" mill patching or asphalt replacement of 28,644 sf. Traffic control and other incidental items shall be included as shown in the specifications. A dollar value unit cost must be filled in for each item indicated. Crack filling shall be included in the pricing with the top seal of lots and playgrounds. Re-stripping of lots and playgrounds should be priced separately for each location as marked.

SPEFICATIONS:

Concrete:

Required use of ½ inch rebar is installed with one foot on center. 6-inch throat at the bottom tie in of stairs. 4000 psi modified concrete preferred for sidewalks, stairs, and ramps, while 5000 psi is used for parking lot surfaces. Minimum of 4-inch gravel base and 4-inch concrete. For curbs it is required to have 5000 psi. Salt Guard will be required after curing. It is requested that any handrails removed be stored next to the project for pick up by KCKPS staff.

Asphalt:

Mill the upper 2" of deteriorated asphalt where needed or directed by KCKPS staff. 6" replacement to include use of mill equipment and skid steers to remove major deteriorated asphalt in smaller areas. Base asphalt shall be finished to match the elevation of milled surface. Cracks greater than ¼" in the existing surface shall be cleaned and sealed filled with Hot-Poured Elastic Type joint sealing compound. Sealcoating requires clean pavement with 2 coats of high solids pavement sealer. Re-stripe all parking spaces and re-mark ADA compliant parking spaces (using white paint) consistent with the current striping and ADA markings. Playground striping and painted gaming areas to be replaced as originally designed.

MATERIALS AND METHODS OF WORK

1. All work shall be done in accordance with the best trade practices. The Contractor shall comply with all applicable safety regulations for the protection of workman, pedestrians, and property. The Contractor shall maintain work area free of debris. All applicable State and local laws, ordinances, and codes shall apply to this contract.
2. The Contractor shall be responsible for the protection of shrubs and grass during the projects and cleanup of the general area.
3. The Contractor and workman must park all vehicles in school's parking lots and in accordance with city and School District regulations. **ONLY** necessary parking on sidewalks or grass area adjoining the project site will be allowed.
4. The Contractor is cautioned that in addition there are direct burial utilities such as water, sewer, gas, electrical main service and electrical service to outdoor lights.
5. The Contractor shall verify all dimensions before any materials, parts, or equipment is ordered for the project. All plan dimensions are approximate.
6. All work and materials performed under this contract shall be guaranteed for a period of one (1) year from date of acceptance by School District.
7. The Contractor will clean and wash all areas where dirt and debris remain within the project area. All new construction debris will be removed daily by the Contractor and backfill, and seed added where grass has been removed.
8. The Contractor will be responsible for all damage to the existing building(s) and their contents within the area of work.

CUTTING AND PATCHING:

DESCRIPTION

- A. Cutting and patching includes cutting into existing construction to provide for installation or performance of other work and subsequent fitting and patching required to restore surface to their original condition.
- B. Cutting and patching is performed for coordination of the work this must be returned to safe and level tie in's.
- C. Drilling of holes to install fasteners and similar operation and cutting and patching performed during the manufacture of products or initial fabrication, or erection of installation processes is to be considered as cutting and patching included in this Section.

EXISTING SURFACES

- A. Cut and patch existing surfaces for the installation of new concrete must be done in a manner to minimize cracks and joints, to achieve a stable and structurally sound installation, and to make patched surfaces match and blend in with existing adjacent surfaces as nearly as possible.
- B. Prior to cutting which affects structural safety, submit written request to School District's Representative for permission to proceed.

NEW MATERIALS FOR PATCHING

- A. Furnish all necessary barricades.

LOCATION AND QUANTITY

- A. Refer to drawing and/or School District's Representative for all cutting and patching work required.
- B. Drilling through concrete or shall be determined in conference with the School District's Representative.
- C. Cutting through walls or floors for the purpose of removal of portions, therefore, must be done by saw cutting, except where there is a danger of damage by water.
- D. Install required protection including but not limited to barricades, shoring, bracing, and supports to maintain the structural integrity of the work, and protection of personnel.

PRODUCT HANDLING:

QUALITY ASSURANCE

Include within Contractor's quality assurance program such procedures as required to assure full protection of work and materials.

TIME OF COMPLETION:

The Work to be performed under this Contract shall commence between **June 1** and **August 4th, 2023** and after written Notice to Proceed from Kansas City Kansas Public Schools.

REPAIRS AND REPLACEMENTS:

- A. In the event of damage, promptly make replacements and repairs at no additional cost to the School District.

BIDDER QUALIFICATIONS:

To qualify as a bidder for trade work the following qualifications must be met. Failure to meet all the below-listed qualifications will result in disqualification of bid.

- Contractor shall be licensed and bonded to work in Kansas City, Kansas and provide said documentation
- Contractor must show evidence of at least five (5) years of trade experience, and bidder must have been in the business prior to submitting bid proposal for at least three (3) years.

BID FORM

By signing this bid form, the vendor certifies the forms being offered meets or exceeds all requirements and conditions of the bid, special provisions, and specifications. In compliance with the above and subject to all the conditions hereof, the undersigned offers and agrees to furnish all items upon which prices are quoted, at the price set opposite each item.

Building	Address	Material	Milling/ Replace (Do Not Exceed)	Area	Size	Striping/ Painting Cost	Total Cost (Materials & Labor)
IARC/Argentine Middle	1620 S.21 st	Asphalt	Cracks/ Top seal	North Lot	14,443 sf	\$	\$
IARC/Argentine Middle	1620 S.21 st	Asphalt	Cracks/ Top seal	Middle catwalk lot	5,101 sf	\$	\$
IARC/Argentine Middle	1620 S.21 st	Asphalt	Cracks/ Top seal	Southeast lot	15,052 sf	\$	\$
Emerson	1429 S. 29 th	Asphalt	Cracks/ Top seal	SE lot	31,723 sf	\$	\$
Harmon HS	2400 Steele Rd	Asphalt	Cracks/ Top seal	Two west lots	71,510 sf	\$	\$
Harmon HS	2400 Steele Rd	Asphalt	Cracks/ Top seal	Road to dock/lot	20,749 sf	\$	\$
New Stanley	3604 Metropolitan	Asphalt	Cracks/ Top seal	North lot/ Playground	8,630 sf	\$	\$
New Stanley	3604 Metropolitan	Asphalt	Cracks/ Top seal	South parking	3,521 sf	\$	\$
Noble Prentis	2337 S. 14 th	Asphalt	Cracks/ Top seal	South Parking	8,035 sf	\$	\$
Noble Prentis	2337 S. 14 th	Asphalt	Cracks/ Top seal	Playground	29,448 sf	\$	\$
Morse EEC	912 S. Baltimore	Asphalt	Mill	South/West lots	22,272 sf	\$	\$
Rosedale Middle	3600 Springfield	Asphalt	Cracks/ Top seal	South Parking	36,161 sf	\$	\$
T.A. Edison	1000 Locust St	Asphalt	Cracks/ Top seal	North Playground	18,443 sf	\$	\$
T.A. Edison	1000 Locust St	Asphalt	Cracks/ Top seal	North Parking	28,900 sf	\$	\$
Main Library	625 Minnesota Ave	Asphalt	Cracks/ Top seal	South lot	25,928 sf	\$	\$
Eugene Ware	4820 Oakland Ave	Asphalt	Cracks/ Top seal	North Playground	22,967 sf	\$	\$
New Chelsea	2500 Wood Ave	Asphalt	Cracks/ Top seal	South Playground	14,078 sf	\$	\$
New Chelsea	2500 Wood Ave	Asphalt	Cracks/ Top seal	North Playground	16,984 sf	\$	\$

Building	Address	Material	Milling/ Replace (Do Not Exceed)	Area	Size	Striping/ Painting Cost	Total Cost (Materials & Labor)
New Chelsea	2500 Wood	Concrete	Replace	Curb to ADA ramp	100 sf	\$	\$
M.E. Pearson	310 N. 11th	Asphalt	Cracks/ Top Seal	South Playground	23,233 sf	\$	\$
Quindaro	2800 Farrow Ave	Asphalt	Cracks/ Top Seal	East Playground	61,305 sf	\$	\$
Quindaro	2800 Farrow Ave	Asphalt	Mill	West drive	4,372 sf	\$	\$
8 th Street Baptist Church	1420 N 8 th St	Asphalt	Cracks/ Top Seal	South/ West parking lots	46,614	\$	\$
8 th Street Baptist Church	1420 N 8 th St	Asphalt	Replace	South lot	2,000 sf	\$	\$
Central Office	2210 N 59 th	Asphalt	Cracks/ Top Seal	Lower south/ East lots	85,361 sf	\$	\$
Central Office	2210 N 59 th	Concrete	Replace	Flume/ drainage channel	50'	\$	\$
Schlagle HS	2214 N 59 th	Concrete	Replace	Sidewalks NE-SE entrys	2,587 sf	\$	\$
NCO Blg A	2220 N 59 th	Concrete	Replace	Curb	275'	\$	\$
NCO Blg B	2220 N 59 th	Concrete	Replace	Sidewalk	440 sf	\$	\$
Sumner Academy	1610 N. 8 th	Concrete	Replace	Sidewalk/ Ramp/stairs	1710 SF/ 8 steps & ramp	\$	\$
Eisenhower Middle	2901 N 72 nd St	Concrete & Asphalt	New Parking	Create new curbs and ADA parking	20 x 72 & 5 foot ADA sidewalk	\$	\$
Total All Projects							\$

WE HEREBY AGREE TO FURNISH THE ITEMS ON WHICH PRICES ARE QUOTED ABOVE IN ACCORDANCE WITH ALL TERMS AND CONDITIONS PREVIOUSLY LISTED AND ANY ATTACHED SPECIFICATIONS.

BY: _____ DATE: _____
TITLE: _____ FIRM: _____
PHONE: _____ EMAIL: _____

Deliver Bids to:

Kansas City Kansas Public Schools
Attn: Director of Purchasing
2010 N. 59th Street, Room 370
Kansas City, KS 66104

ATTACHMENT A – USD 500 STANDARD TERMS AND CONDITIONS

1. SCOPE: The following terms and conditions shall prevail unless otherwise modified by U.S.D. 500 within this bid document. U.S.D. 500 reserves the right to reject any bid which takes exception to these terms and conditions.
2. DEFINITIONS AS USED HEREIN:
 - a. The term "bid request" means a solicitation of a formal sealed bid.
 - b. The term "bid" means the price offered by the bidder.
 - c. The term "bidder" means the offeror or Contractor.
 - d. The term "U.S.D. 500" means Unified School District No. 500.
 - e. The term "Board of Education" or "BOE" means the governing body of Unified School District No.500
3. COMPLETING BID: Bids must be submitted ONLY on the form provided in this bid document. All information must be legible. Any and all corrections and /or erasures must be initialed. Each bid sheet must be signed by the authorized bidder and required information must be provided.
4. CONFIDENTIALITY OF BID INFORMATION: Each bid must be sealed and submitted in or under cover of the enclosed envelope to provide confidentiality of the bid information prior to the bid opening. Supporting documents and/or descriptive literature may be submitted with the bid or in a separate envelope marked "Literature for Bid (Number)." Do NOT indicate bid prices on literature. All bids and supporting bid documents become public information after the bid opening and are available for inspection by the general public in accordance with the Kansas Open Records Act.
5. ACCURACY OF BID: Each bid is publicly opened and is made part of the public record of U.S.D. 500. Therefore, it is necessary that any and all information presented is accurate and/or will be that by which the bidder will complete the contract. If there is a discrepancy between the unit price and extended total, the unit price will prevail.
6. SUBMISSION OF BID: Bids are to be sealed and submitted to the Purchasing Department Office, 2010 North 59th Street, Room 370, Kansas City, Kansas, 66104, prior to the date and time indicated on the cover sheet.
7. ADDENDA: All changes in connection with this bid will be issued by the Purchasing Office in the form of a written addendum. Signed acknowledgement of receipt of each addendum must be submitted with the bid.
8. LATE BIDS AND MODIFICATION OR WITHDRAWALS: Bids received after the deadline designated in this bid document shall not be considered and shall be returned unopened.
9. BIDS BINDING: All bids submitted shall be binding upon the bidder if accepted by U.S.D. 500 within sixty (60) calendar days after the bid opening.
10. EQUIVALENT BIDS: When brand or trade names are used in the bid invitation, it is for the purpose of item identification and to establish standards for quality, style and features. Bids on equivalent items of substantially the same quality, style and features are invited unless items are marked "No Substitute." Equivalent bids must be accompanied by descriptive literature and/ or samples may be required and shall be supplied at no charge to the school district.
11. NEW MATERIALS, SUPPLIES AND EQUIPMENT: Unless otherwise specified, all materials, supplies or equipment offered by a bidder shall be new, unused, of recent manufacture, first class in every respect, and suitable for their intended purpose. All equipment shall be assembled and fully serviced, ready for operation when delivered.
12. WARRANTY: Supplies or services furnished as a result of this bid shall be covered by the most favorable commercial warranties, expressed or implied, that the bidder and/or manufacturer gives to any customer. The rights and remedies provided herein are in addition to and do not limit any rights afforded to U.S.D. 500 by any other clause of this bid reserves the right to request from bidders a separate manufacturer certification of all statements made in the Proposal.
13. METHOD OF AWARD AND NOTIFICATION: Bids will be analyzed and the award made to the lowest and best, responsive and responsible bidder(s) whose bid conforms to the specifications and whose bid is considered to be the best value in the opinion of U.S.D. 500.
14. U.S.D. 500 reserves the right to reject any or all bids and any part of a bid: to waive informalities, technical defects, and minor irregularities in bids received: and to award the bid on an item by item basis by specified groups of items or to consider bids submitted on an "all or nothing" basis if the bid is clearly designed as such or when it is determined to be in the best interest of U.S.D. 500.
15. The signed bid shall be considered an offer on the part of the bidder: such offer shall be deemed accepted upon the issuance by U.S.D. 500 of a Purchase Order or other contractual document.
16. DELIVERY TERMS: All deliveries shall be F.O.B. Destination and all freight charges shall be included in the bid price.
17. DAMAGED AND/OR LATE SHIPMENTS: U.S.D 500 has no obligation to accept damaged shipments and reserves the right to return at the Contractor's expense damaged merchandise even though the damage was not apparent or discovered until after receipt of the items. The Contractor is responsible to notify U.S.D. 500 Purchasing Office of any late or delayed shipments. U.S.D. 500 reserves the right to cancel all or any part of an order if the shipment is not made as promised.
18. CREDIT TERMS: Bidder shall indicate all discounts for full and/or prompt payment. Discounts shall be considered as a cost factor in the determination of award, except discounts offered for payment within less than ten (10) calendar days. Discounts offered shall be computed from date of receipt of correct invoice or receipt and acceptance of products, whichever is later.
19. SELLER'S INVOICE: Invoices shall be prepared and submitted in duplicate to address shown on the Purchase Order. Invoices shall contain the following information: Purchase Order number, contract number, item number, description of supplies or services, sizes, unit of measure, quantity, unit price and extended totals.
20. TAX EXEMPT: U.S.D. 500 is exempt from Federal, State and local taxes by KS-FZLEKBLQ. Sites of all transactions under the order(s) that shall be derived from this bid request shall be deemed to have been accomplished within the State of Kansas.
21. SAFETY: All practices, materials, supplies and equipment shall comply with the federal Occupational Safety and Health Act, as well as any pertinent Federal, State and/or local safety or environmental codes.
22. DISCLAIMER OR LIABILITY: U.S.D. 500 will not hold harmless or indemnify any bidder for any liability whatsoever.
23. TERMINATION RIGHTS: KCKPS shall have the right to terminate/cancel the Agreement for its convenience and without penalty upon thirty (30) days prior written notice to the Contractor.

24. **HOLD HARMLESS:** The Contractor agrees to protect, defend, indemnify and hold the Board of Education, its officers, employees and agents free and harmless from and against any and all losses, penalties, damages, settlements, costs, charges, professional fees or other expenses or liabilities or every kind and character arising out of or relating to any and all claims, liens, demands, obligations, actions, proceedings or causes of action of every kind and character in connection with or arising directly or indirectly out of this agreement and/or the performance hereof. Without limiting the generality of the foregoing, any and all such claims, etc., relating to personal injury, infringement of any patent trademark, copyright (or application for any thereof) or of any other tangible or intangible personal or property right, or actual or alleged violation of any applicable statute, ordinance, administrative order, rule or regulation, or decree of any court, shall be included in the indemnity hereunder. The Contractor further agrees to investigate, handle, respond to, provide defense for and defend any such claims, etc., at his/her sole expense and agrees to bear all other costs and expenses related thereto, even if such claim is groundless, false or fraudulent.

NO MUTUAL INDEMNIFICATION:

K.S.A.72-8201a: Contracts; indemnification or hold harmless provisions, void.

(a) It is the public policy of the state of Kansas that all contracts entered into by the board of education of a school district, or any officers or employees thereof acting on behalf of the board, provide that the school district and board of education shall be responsible solely for the district's or board's actions or failure to act under a contract.

(b) The board of education of a school district or any officers or employees thereof acting on behalf of the board shall not have the authority to enter into a contract under which the school district or board agrees to, or is required to, indemnify or hold harmless against damages, injury or death resulting from the actions or failure to act on the part of any party to a contract other than the board or district.

(c) The provisions of any contract entered into in violation of this section shall be contrary to the public policy of the state of Kansas and shall be void and unenforceable.

25. **INSURANCE:** Upon receipt of award, Contractor shall provide Certificate of Insurance as required within three (3) days after notification issued by the Purchasing Department.

A. The following general insurance requirements apply to any and all work under this contract by all Contractors and subcontractors of any tier.

- (1) Any and all insurance required by this contract with each and any and all insurance required by this contract shall be maintained during the entire length of this contract, including any extensions thereto, and until all work has been completed to the satisfaction of the Kansas City Kansas Public Schools. Any and all insurance must be on an occurrence basis.
- (2) No Contractor or subcontractor shall commence work under a contract until all insurance requirements contained within the solicitation have been complied with and until evidence of all insurance requirements in each and every contract with each and every subcontractor of any tier and shall require the same to comply with all such requirements.
- (3) The Kansas City Kansas Public Schools shall be covered as an Additional Insured under any and all insurance required by this contract. Confirmation of this shall appear on all certificates of insurance and on any and all applicable policies. The title of the awarded contract shall also appear on any and all applicable policies.
- (4) The Kansas City Kansas Public Schools shall be given no less than thirty (30) days' written notice of cancellation. The Kansas City Kansas Public Schools shall be given not less than thirty (30) days' prior written notice of material changes of any insurance required under this contract. The Kansas City Kansas Public Schools shall be given written notice of renewal of coverage not less than thirty (30) days prior to the expiration of any particular policy.
- (5) Each and every agent shall warrant when signing the certificate of insurance that he is acting as an authorized representative on behalf of the companies affording insurance coverage under the contract and that he is licensed by the State of Kansas to conduct insurance business in the State of Kansas and that the companies affording insurance coverage are currently licensed by the State of Kansas and are currently in good standing with the Commissioner of Insurance for the State of Kansas.
- (6) Any and all companies providing insurance required by this contract shall meet the minimum financial security requirements as set forth below. The rating for each company must be indicated on the certificate of insurance.

For all contracts, regardless of risk, companies providing insurance under this contract must have a current:

- (a) Best's Rating not less than A, and
- (b) Best's Financial Size Category not less than Class VII
- (7) In the event the Contractor neglects, refuses, or fails to provide insurance required by the contract documents, or if such insurance is canceled for any reason, Kansas City Kansas Public Schools shall have the right, but not the duty, to procure the same, and the cost thereof shall be deducted from monies then due or thereafter to become due to the Contractor or Kansas City Kansas Public Schools shall have the right to cancel the contract.

B. **Worker's Compensation and Employer's Liability Insurance**

The Contractor shall procure and maintain Worker's Compensation and Employer's Liability Insurance in the following limits. Such insurance is to cover each and every employee who is or may be engaged in work under this contract.

Worker's Compensation.....	Statutory
<u>Employer's Liability</u>	
Bodily Injury by Accident.....	\$1,000,000 each accident
Bodily Injury by Disease	\$1,000,000 each employee
Bodily Injury by Disease	\$1,000,000 policy limit

C. **Comprehensive General Liability Insurance**

The Contractor shall procure and maintain Comprehensive Insurance in an amount not less than \$1,000,000 for bodily injury and property damage combined single limit. The following specific extensions of coverage shall be provided and indicated on the certificate of insurance:

- (1) Comprehensive Form
- (2) Contractual Insurance

- (3) Personal Injury
- (4) Broad Form Property Damage
- (5) Premises – Operations
- (6) Completed Operations

This coverage shall cover the use of all equipment, hoists, and vehicles on the site(s) not covered by Automobile Liability under this contract. Policy coverage must be on an occurrence basis.

D. Automobile Liability Insurance

The Contractor shall procure and maintain Automobile Liability Insurance in an amount not less than \$1,000,000 for bodily injury and property damage combined single limit. The following extensions of coverage shall be provided and indicated on the certificate of insurance.

- (1) Comprehensive Form
- (2) Owned, Hired, Leased and non-owned vehicles

If the Contractor does not own any vehicles in the corporate name, non-owned vehicles coverage shall apply and must be endorsed on either the Contractor's personal automobile policy or the Comprehensive General Liability coverage required under this contract.

E. Commercial Crime insurance (when applicable)

The Contractor shall procure and maintain Commercial Crime/Fidelity insurance in an amount not less than \$1,000,000.00, including coverage for theft or loss of KCKPS property.

- 26. LAW GOVERNING: All contractual agreements shall be subject to, governed by, and construed according to the laws of the State of Kansas.
- 27. ANTI-DISCRIMINATION CLAUSE: No bidder on this request shall in any way, directly or indirectly, discriminate against any person because of age, race, color handicap, sex, national origin, or religious creed.
- 28. BID BOND/PERFORMANCE BOND (Applicable to Construction/Remodel/Repair Projects, Unless Waived by the District)
 - A. Each proposal must be accompanied by a certified or cashier's check, or a bid bond in the amount of five percent (5%) of the Contractor's total bid.
 - B. A Performance Bond and a Material and Labor Payment Bond in amounts equal to one hundred percent (100%) of the contract price shall be furnished by the successful bidder. Bonds shall be issued by a surety acceptable to the Board.
- 29. DISQUALIFICATION:
 - A. The Director of Purchasing may, at her/his sole discretion, disqualify a bidder for one or any combination of the following reasons:
 - 1. Bidder's product does not meet the specifications or bid conditions of the solicitation;
 - 2. Bidder's tendered bid is not received on the District's bid form;
 - 3. Bidder's tendered bid is not signed;
 - 4. Required bid bond is not furnished at time of bid opening;
 - 5. Failure to comply with bid instructions, terms and conditions that are judged to be essential to the competitive process and in the best interests of the District.
 - B. Disqualification of bidders on future bids may be considered for any one or combination of the following reasons:
 - 1. Refusal of the bidder to complete a contract or bid;
 - 2. Bidder's past history of late deliveries or partial/incomplete shipments,
 - 3. Bidder's products or services have proven unreliable, unworkable or have not accomplished the result requested in the District's specifications.
- 30. SUPPLIER DIVERSITY: The Kansas City Kansas Public Schools encourages supplier diversity and participation of MBE/WBE/DBE designated businesses. However, such participation will not result in any selection or scoring advantage in the bid evaluation process.

INCLEMENT WEATHER OR EMERGENCY

IF THERE IS A BUILDING CLOSING THE DAY OF THE OPENING OF PROPOSALS DUE TO INCLEMENT WEATHER OR AN EMERGENCY, THE OPENING OF PROPOSALS WILL OCCUR AT 2:00PM (CENTRAL) THE NEXT BUSINESS DAY THE DISTRICT IS OPEN.

ATTACHMENT B – CONTRACTUAL PROVISIONS ATTACHMENT

Important: This form contains mandatory contract provisions and must be attached to or incorporated in all copies of any contractual agreement. If it is attached to the vendor/contractor's standard contract form, then that form must be altered to contain the following provision:

"The Provisions found in Contractual Provisions Attachment (Form DA-146a, Rev. 06-12), which is attached hereto, are hereby incorporated in this contract and made a part thereof."

The parties agree that the following provisions are hereby incorporated into the contract to which it is attached and made a part thereof, said contract being the date of the Purchase Order issued.

1. **Terms Herein Controlling Provisions:** It is expressly agreed that the terms of each and every provision in this attachment shall prevail and control over the terms of any other conflicting provision in any other document relating to and a part of the contract in which this attachment is incorporated. Any terms that conflict or could be interpreted to conflict with this attachment are nullified.
2. **Kansas Law and Venue:** This contract shall be subject to, governed by, and construed according to the laws of the State of Kansas, and jurisdiction and venue of any suit in connection with this contract shall reside only in courts located in the State of Kansas.
3. **Termination Due to Lack of Funding Appropriation:** If, in the judgment of the Director of Accounts and Reports, Department of Administration, sufficient funds are not appropriated to continue the function performed in this agreement and for the payment of the charges hereunder, State may terminate this agreement at the end of its current fiscal year. State agrees to give written notice of termination to contractor at least thirty (30) days prior to the end of its current fiscal year, and shall give such notice for a greater period prior to the end of such fiscal year as may be provided in this contract, except that such notice shall not be required prior to ninety (90) days before the end of such fiscal year. Contractor shall have the right, at the end of such fiscal year, to take possession of any equipment provided State under the contract. State will pay to the contractor all regular contractual payments incurred through the end of such fiscal year, plus contractual charges incidental to the return of any such equipment. Upon termination of the agreement by State, title to any such equipment shall revert to contractor at the end of the State's current fiscal year. The termination of the contract pursuant to this paragraph shall not cause any penalty to be charged to the agency or the contractor.
4. **Disclaimer of Liability:** No provision of this contract will be given effect that attempts to require the State of Kansas or its agencies to defend, hold harmless, or indemnify any contractor or third party for any acts or omissions. The liability of the State of Kansas is defined under the Kansas Tort Claims Act (K.S.A. 75-6101 *et seq.*).
5. **Anti-Discrimination Clause:** The contractor agrees: (a) to comply with the Kansas Act Against Discrimination (K.S.A. 44-1001 *et seq.*) and the Kansas Age Discrimination in Employment Act (K.S.A. 44-1111 *et seq.*) and the applicable provisions of the Americans With Disabilities Act (42 U.S.C. 12101 *et seq.*) (ADA) and to not discriminate against any person because of race, religion, color, sex, disability, national origin or ancestry, or age in the admission or access to, or treatment or employment in, its programs or activities; (b) to include in all solicitations or advertisements for employees, the phrase "equal opportunity employer"; (c) to comply with the reporting requirements set out at K.S.A. 44-1031 and K.S.A. 44-1116; (d) to include those provisions in every subcontract or purchase order so that they are binding upon such subcontractor or vendor; (e) that a failure to comply with the reporting requirements of (c) above or if the contractor is found guilty of any violation of such acts by the Kansas Human Rights Commission, such violation shall constitute a breach of contract and the contract may be cancelled, terminated or suspended, in whole or in part, by the contracting state agency or the Kansas Department of Administration; (f) if it is determined that the contractor has violated applicable provisions of ADA, such violation shall constitute a breach of contract and the contract may be cancelled, terminated or suspended, in whole or in part, by the contracting state agency or the Kansas Department of Administration.

Contractor agrees to comply with all applicable state and federal anti-discrimination laws.

The provisions of this paragraph number 5 (with the exception of those provisions relating to the ADA) are not applicable to a contractor who employs fewer than four employees during the term of such contract or whose contracts with the contracting State agency cumulatively total \$5,000 or less during the fiscal year of such agency.

6. **Acceptance of Contract:** This contract shall not be considered accepted, approved or otherwise effective until the statutorily required approvals and certifications have been given.
7. **Arbitration, Damages, Warranties:** Notwithstanding any language to the contrary, no interpretation of this contract shall find that the State or its agencies have agreed to binding arbitration, or the payment of damages or penalties. Further, the State of Kansas and its agencies do not agree to pay attorney fees, costs, or late payment charges beyond those available under the Kansas Prompt Payment Act (K.S.A. 75-6403), and no provision will be given effect that attempts to exclude, modify, disclaim or otherwise attempt to limit any damages available to the State of Kansas or its agencies at law, including but not limited to the implied warranties of merchantability and fitness for a particular purpose.
8. **Representative's Authority to Contract:** By signing this contract, the representative of the contractor thereby represents that such person is duly authorized by the contractor to execute this contract on behalf of the contractor and that the contractor agrees to be bound by the provisions thereof.
9. **Responsibility for Taxes:** The State of Kansas and its agencies shall not be responsible for, nor indemnify a contractor for, any federal, state or local taxes which may be imposed or levied upon the subject matter of this contract.
10. **Insurance:** The State of Kansas and its agencies shall not be required to purchase any insurance against loss or damage to property or any other subject matter relating to this contract, nor shall this contract require them to establish a "self-insurance" fund to protect against any such loss or damage. Subject to the provisions of the Kansas Tort Claims Act (K.S.A. 75-6101 *et seq.*), the contractor shall bear the risk of any loss or damage to any property in which the contractor holds title.
11. **Information:** No provision of this contract shall be construed as limiting the Legislative Division of Post Audit from having access to information pursuant to K.S.A. 46-1101 *et seq.*
12. **The Eleventh Amendment:** "The Eleventh Amendment is an inherent and incumbent protection with the State of Kansas and need not be reserved, but prudence requires the State to reiterate that nothing related to this contract shall be deemed a waiver of the Eleventh Amendment."
13. **Campaign Contributions / Lobbying:** Funds provided through a grant award or contract shall not be given or received in exchange for the making of a campaign contribution. No part of the funds provided through this contract shall be used to influence or attempt to influence an officer or employee of any State of Kansas agency or a member of the Legislature regarding any pending legislation or the awarding, extension, continuation, renewal, amendment or modification of any government contract, grant, loan, or cooperative agreement.



Legend

Parcel IDs

Locator Map

Notes

Map Print Date: 2/1/2023 8:44 AM



Map Scale
1: 1,834



(c) 2015 Unified Government

DISCLAIMER OF WARRANTY AND ACCURACY: Unified Government of Wyandotte Co./Kansas City, KS (UG) makes no representations or warranties about this map or its contents, including, without limitation, accuracy, completeness, or fitness for any purpose. Users of this map document do so at their own risk; UG will not be liable to any such user for any loss or damage whatsoever.



Legend

Street Labels

Buildings

Railroads

MAIN

SPUR

YARD

Roads

INTERSTATE

HIGHWAY

MAJOR ARTERIAL

MINOR ARTERIAL

COLLECTOR

LOCAL

ALLEY

CEMETERY

LEVEE

PARK ACC

PRIVATE

Locator Map

Notes

Map Print Date: 1/13/2023 11:40 AM
Playground / Parking Lot Large Cracks - Seal and Restrip



Map Scale
1: 1,616



© 2015 Unified Government

DISCLAIMER OF WARRANTY AND ACCURACY: Unified Government of Wyandotte Co./Kansas City, KS (UG) makes no representations or warranties about this map or its content, including, without limitation, accuracy, completeness, or fitness for any purpose. Users of this map document do so at their own risk; UG will not be liable to any such user for any loss or damage whatsoever.

Harmon High School
2400 Steele Road



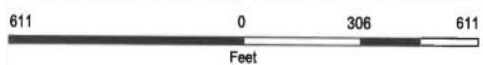
GeoSpatial Services
710 N 7th St, Suite 200 | Kansas City, KS 66101
Ph: 813-873-2841 | gss@wyockok.org
www.wyockok.org/gss



- Legend**
- Parks
 - Street Labels
 - Kansas Regional Counties
 - Missouri Regional Counties
 - Municipal Labels
 - Municipal Boundaries
 - Buildings
 - Railroads
 - MAIN
 - SPUR
 - YARD
 - Roads
 - INTERSTATE
 - HIGHWAY
 - MAJOR ARTERIAL
 - MINOR ARTERIAL
 - COLLECTOR
 - LOCAL

Locater Map

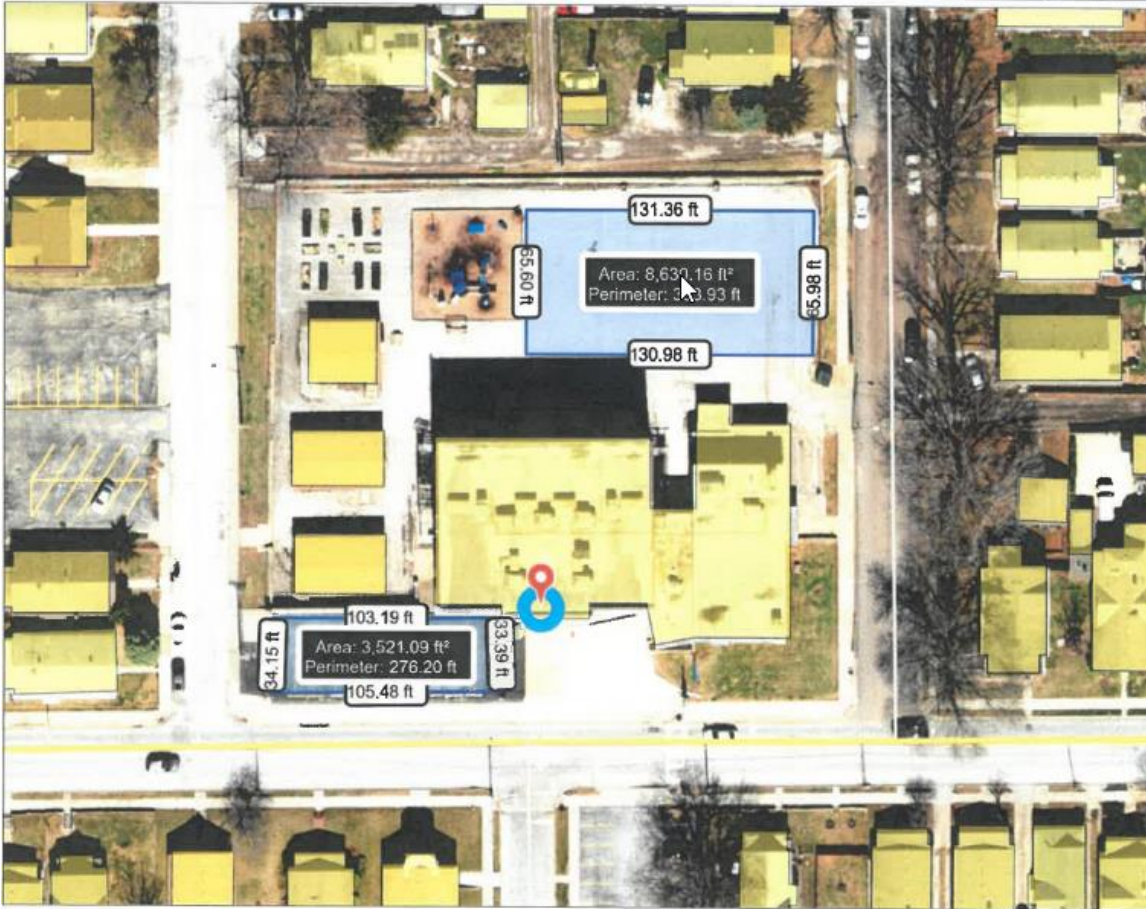
Notes
Map Print Date: 2/1/2023 4:33 PM



Map Scale
1: 3,668



DISCLAIMER OF WARRANTY AND ACCURACY: Unified Government of Wyandotte Co./Kansas City, KS (UG) makes no representations or warranties about this map or its content, including, without limitation, accuracy, completeness, or fitness for any purpose. Users of this map document do so at their own risk; UG will not be liable to any such user for any loss or damage whatsoever.



Legend

Street Labels

- Buildings
- Railroads
- MAIN
- SPUR
- YARD

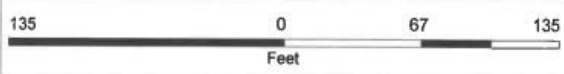
Roads

- INTERSTATE
- HIGHWAY
- MAJOR ARTERIAL
- MINOR ARTERIAL
- COLLECTOR
- LOCAL
- ALLEY
- CEMETERY
- LEVEE
- PARK ACC
- PRIVATE

Locater Map

Notes

Map Print Date: 1/13/2023 1:39 PM
Parking lot in front of the school Potholes and strip lines Playground reseal



Map Scale
1: 808



(c) 2015 Unified Government

DISCLAIMER OF WARRANTY AND ACCURACY: Unified Government of Wyandotte Co./Kansas City, KS (UG) makes no representations or warranties about this map or its content, including, without limitation, accuracy, completeness, or fitness for any purpose. Users of this map document do so at their own risk; UG will not be liable to any such user for any loss or damage whatsoever.

Noble Prentiss
2337 S. 14th Street



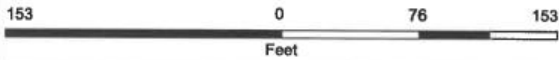
GeoSpatial Services
710 N 7th St, Suite 200 | Kansas City, KS 66101
Ph: 913-573-2941 | gsa@wycokck.org
www.wycokck.org/gss



Legend
Parcel IDs

Locator Map

Notes
Map Print Date: 2/1/2023 9:19 AM



Map Scale
1: 917



© 2015 Unified Government

DISCLAIMER OF WARRANTY AND ACCURACY: Unified Government of Wyandotte Co./Kansas City, KS (UG) makes no representations or warranties about this map or its content, including, without limitation, accuracy, completeness, or fitness for any purpose. Users of this map document do so at their own risk; UG will not be liable to any such user for any loss or damage whatsoever.



Legend

Street Labels

Railroads

- MAIN
- SPUR
- YARD

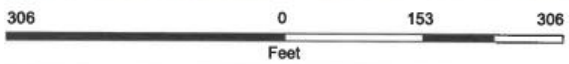
Roads

- INTERSTATE
- HIGHWAY
- MAJOR ARTERIAL
- MINOR ARTERIAL
- COLLECTOR
- LOCAL
- ALLEY
- CEMETERY
- LEVEE
- PARK ACC
- PRIVATE
- SERVICE

Locator Map

Notes

Map Print Date: 2/13/2023 2:47 PM



Map Scale
1: 1,834



DISCLAIMER OF WARRANTY AND ACCURACY: Unified Government of Wyandotte Co./Kansas City, KS (UG) makes no representations or warranties about this map or its content, including, without limitation, accuracy, completeness, or fitness for any purpose. Users of this map document do so at their own risk; UG will not be liable to any such user for any loss or damage whatsoever.



Legend

Street Labels

Buildings

Railroads

- MAIN
- - - SPUR
- YARD

Roads

- INTERSTATE
- HIGHWAY
- MAJOR ARTERIAL
- MINOR ARTERIAL
- COLLECTOR
- LOCAL
- ALLEY
- CEMETERY
- LEVEE
- PARK ACC
- PRIVATE

Locator Map

Notes

Map Print Date: 1/13/2023 2:12 PM
South and West Parking Lot - Seal and restripe



Map Scale
1: 1,616



(c) 2015 United Government

DISCLAIMER OF WARRANTY AND ACCURACY: Unified Government of Wyandotte Co./Kansas City, KS (UG) makes no representations or warranties about this map or its content, including, without limitation, accuracy, completeness, or fitness for any purpose. Users of this map document do so at their own risk; UG will not be liable to any such user for any loss or damage whatsoever.



Legend

Street Lables

- Buildings
- Railroads
- MAIN
- SPUR
- YARD

Roads

- INTERSTATE
- HIGHWAY
- MAJOR ARTERIAL
- MINOR ARTERIAL
- COLLECTOR
- LOCAL
- ALLEY
- CEMETERY
- LEVEE
- PARK ACC
- PRIVATE

Locator Map

Notes

Map Print Date: 1/12/2023 10:48 AM
North Side Playground reseal and north side parking lot seal & restripe lines.



Map Scale
1: 1,616

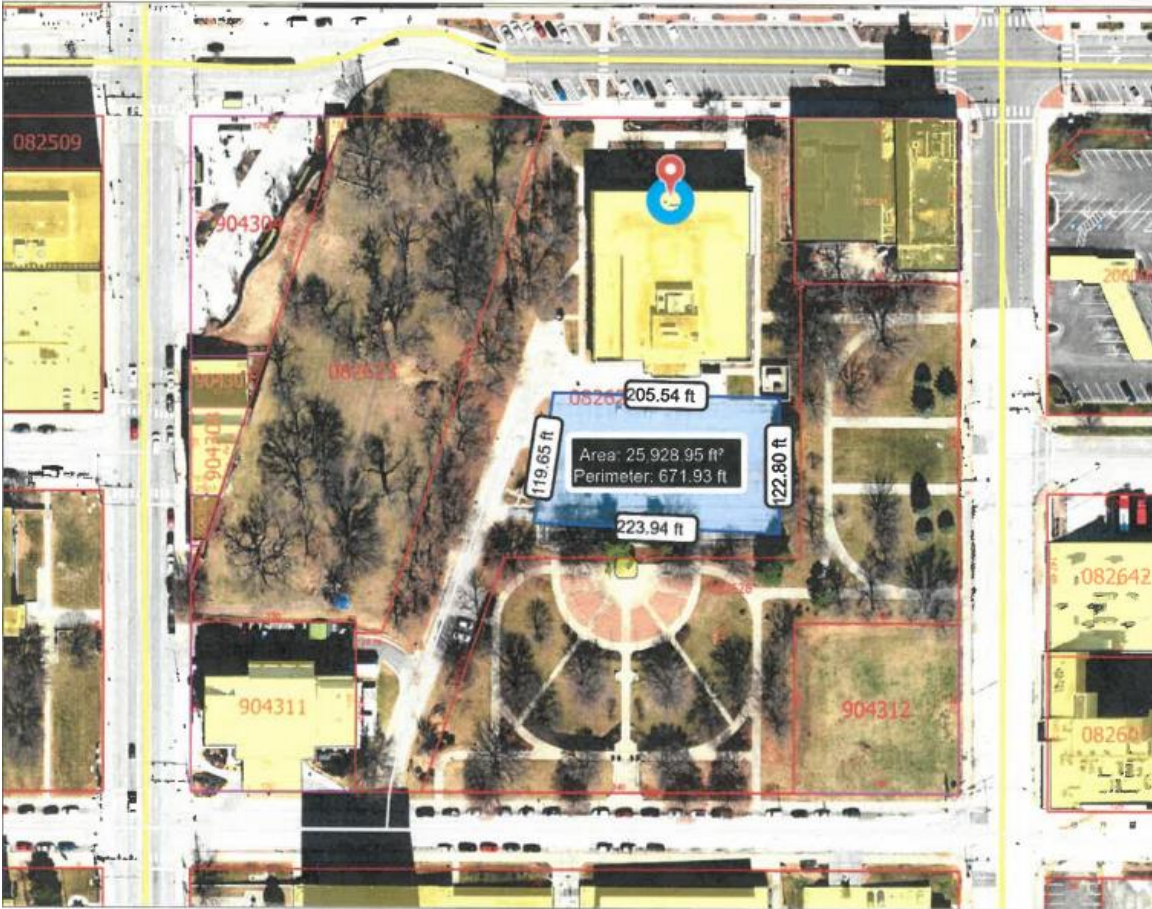


DISCLAIMER OF WARRANTY AND ACCURACY: Unified Government of Wyandotte Co./Kansas City, KS (UG) makes no representations or warranties about this map or its content, including, without limitation, accuracy, completeness, or fitness for any purpose. Users of this map document do so at their own risk. UG will not be liable to any such user for any loss or damage whatsoever.

Main Library
625 Minnesota Avenue

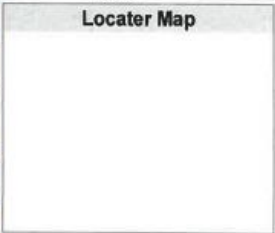


GeoSpatial Services
710 N 7th St, Suite 200 | Kansas City, KS 66101
Ph: 913-573-2941 | gss@wycokck.org
www.wycokck.org/gss



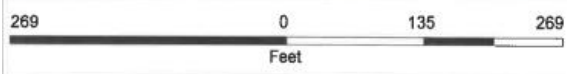
Legend

Street Lables
Buildings
Railroads
MAIN
SPUR
YARD
Roads
INTERSTATE
HIGHWAY
MAJOR ARTERIAL
MINOR ARTERIAL
COLLECTOR
LOCAL
ALLEY
CEMETERY
LEVEE
PARK ACC
PRIVATE



Notes

Map Print Date: 1/12/2023 10:58 AM
South Staff Parking Lot on backside of building - Seal and restripe lines

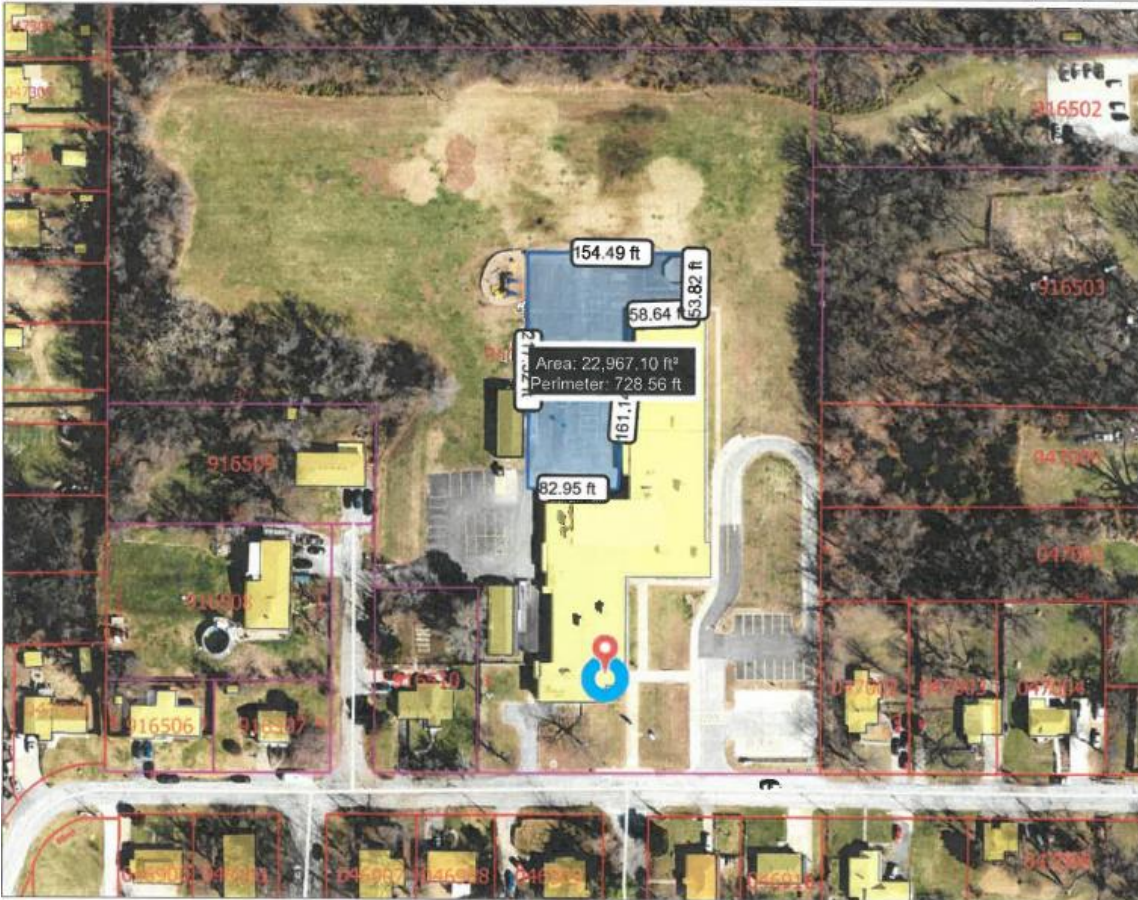


Map Scale
1: 1,616



(c) 2015 Unified Government

DISCLAIMER OF WARRANTY AND ACCURACY: Unified Government of Wyandotte Co./Kansas City, KS (UG) makes no representations or warranties about this map or its content, including, without limitation, accuracy, completeness, or fitness for any purpose. Users of this map document do so at their own risk; UG will not be liable to any such user for any loss or damage whatsoever.



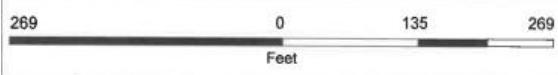
Legend

- Street Lables
- Buildings
- Railroads
- MAIN
- SPUR
- YARD
- Roads
- INTERSTATE
- HIGHWAY
- MAJOR ARTERIAL
- MINOR ARTERIAL
- COLLECTOR
- LOCAL
- ALLEY
- CEMETERY
- LEVEE
- PARK ACC
- PRIVATE

Locator Map

Notes

Map Print Date: 1/12/2023 12:11 PM
Playground



Map Scale
1: 1,616



DISCLAIMER OF WARRANTY AND ACCURACY: Unified Government of Wyandotte Co./Kansas City, KS (UG) makes no representations or warranties about this map or its content, including, without limitation, accuracy, completeness, or fitness for any purpose. Users of this map document do so at their own risk; UG will not be liable to any such user for any loss or damage whatsoever.

P1



Legend

Street Labels

Buildings

Railroads

- MAIN
- SPUR
- YARD

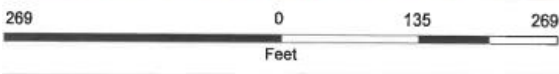
Roads

- INTERSTATE
- HIGHWAY
- MAJOR ARTERIAL
- MINOR ARTERIAL
- COLLECTOR
- LOCAL
- ALLEY
- CEMETERY
- LEVEE
- PARK ACC
- PRIVATE

Locator Map

Notes

Map Print Date: 1/17/2023 7:31 AM
 Playground



Map Scale
 1 : 1,616



© 2015 Unified Government

DISCLAIMER OF WARRANTY AND ACCURACY: Unified Government of Wyandotte Co./Kansas City, KS (UG) makes no representations or warranties about this map or its content, including, without limitation, accuracy, completeness, or fitness for any purpose. Users of this map document do so at their own risk; UG will not be liable to any such user for any loss or damage whatsoever.

New Chelsea
2500 Wood

0-2



GeoSpatial Services
710 N 7th St, Suite 200 | Kansas City, KS 66101
Ph: 913-573-2941 | gss@wyocokc.org
www.wyocokc.org/gss



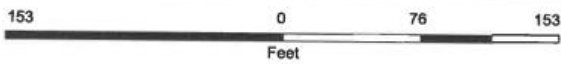
Legend

- Street Labels
- Kansas Regional Counties
- Missouri Regional Counties
- Municipal Labels
- Municipal Boundaries
- Railroads
 - MAIN
 - SPUR
 - YARD
- Roads
 - INTERSTATE
 - HIGHWAY
 - MAJOR ARTERIAL
 - MINOR ARTERIAL
 - COLLECTOR
 - LOCAL
 - ALLEY
 - CEMETERY

Locator Map

Notes

Map Print Date: 3/20/2023 4:27 PM
Concrete curb replaced with ADA ramp.



Map Scale
1: 917



(c) 2015 Unified Government

DISCLAIMER OF WARRANTY AND ACCURACY: Unified Government of Wyandotte Co./Kansas City, KS (UG) makes no representations or warranties about this map or its content, including, without limitation, accuracy, completeness, or fitness for any purpose. Users of this map document do so at their own risk; UG will not be liable to any such user for any loss or damage whatsoever.

10 x 10
Possibly
Convert into
a ramp



New Chelsea

M.E. Pearson
310 N. 11th Street



GeoSpatial Services
710 N. 7th St, Suite 200 | Kansas City, KS 66101
Ph. 913-573-2941 | gss@wyockok.org
www.wyockok.org/gss



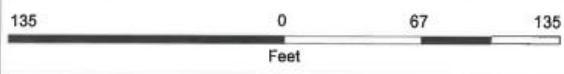
Legend

- Buildings
- Parcel IDs

Locator Map

Notes

Map Print Date: 1/12/2023 2:30 PM
Playground



Map Scale
1: 808



(c) 2015 Unified Government

DISCLAIMER OF WARRANTY AND ACCURACY: Unified Government of Wyandotte Co./Kansas City, KS (UG) makes no representations or warranties about this map or its content, including, without limitation, accuracy, completeness, or fitness for any purpose. Users of this map document do so at their own risk; UG will not be liable to any such user for any loss or damage whatsoever.

Quindadro
2700 Farrow Ave



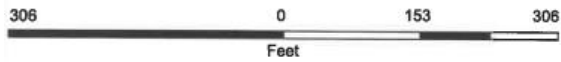
GeoSpatial Services
710 N 7th St, Suite 200 | Kansas City, KS 66101
Ph: 913-573-2941 | gss@wycokck.org
www.wycokck.org/gss



Legend	
Street Lables	
Railroads	
—	MAIN
- -	SPUR
---	YARD
Roads	
—	INTERSTATE
—	HIGHWAY
—	MAJOR ARTERIAL
—	MINOR ARTERIAL
—	COLLECTOR
—	LOCAL
—	ALLEY
—	CEMETERY
—	LEVEE
—	PARK ACC
—	PRIVATE
—	SERVICE

Locator Map

Notes
Map Print Date: 2/13/2023 1:24 PM



Map Scale
1: 1,834



© 2015 Unified Government

DISCLAIMER OF WARRANTY AND ACCURACY: Unified Government of Wyandotte Co./Kansas City, KS (UG) makes no representations or warranties about this map or its content, including, without limitation, accuracy, completeness, or fitness for any purpose. Users of this map document do so at their own risk; UG will not be liable to any such user for any loss or damage whatsoever.



Legend

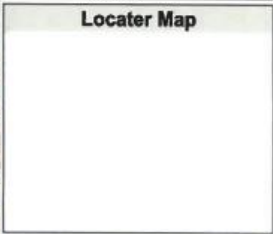
Street Labels

Railroads

- MAIN
- SPUR
- YARD

Roads

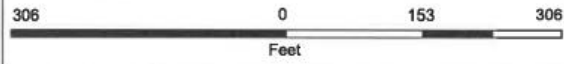
- INTERSTATE
- HIGHWAY
- MAJOR ARTERIAL
- MINOR ARTERIAL
- COLLECTOR
- LOCAL
- ALLEY
- CEMETERY
- LEVEE
- PARK ACC
- PRIVATE
- SERVICE



Notes

Map Print Date: 2/6/2023 2:17 PM

46,614



Map Scale
 1: 1,834



(c) 2015 Unified Government

DISCLAIMER OF WARRANTY AND ACCURACY: Unified Government of Wyandotte Co., Kansas City, KS (UG) makes no representations or warranties about this map or its content, including, without limitation, accuracy, completeness, or fitness for any purpose. Users of this map document do so at their own risk; UG will not be liable to any such user for any loss or damage whatsoever.



Legend

Street Labels

- Buildings
- Railroads
- MAIN
- SPUR
- YARD

Roads

- INTERSTATE
- HIGHWAY
- MAJOR ARTERIAL
- MINOR ARTERIAL
- COLLECTOR
- LOCAL
- ALLEY
- CEMETERY
- LEVEE
- PARK ACC
- PRIVATE

Locator Map

Notes

Map Print Date: 1/17/2023 8:12 AM
Parking Lot - Seal and restripe.



Map Scale
1: 1,616



(c) 2015 United Government

DISCLAIMER OF WARRANTY AND ACCURACY: Unified Government of Wyandotte Co./Kansas City, KS (UG) makes no representations or warranties about this map or its content, including, without limitation, accuracy, completeness, or fitness for any purpose. Users of this map document do so at their own risk; UG will not be liable to any such user for any loss or damage whatsoever.

Central office
2210 N 59th



GeoSpatial Services
710 N 7th St, Suite 200 | Kansas City, KS 66101
Ph: 913-573-2941 | gss@wycockck.org
www.wycockck.org/gss



Legend

Street Lables

Railroads

— MAIN

- SPUR

YARD

Roads

INTERSTATE

HIGHWAY

MAJOR ARTERIAL

MINOR ARTERIAL

COLLECTOR

LOCAL

ALLEY

CEMETERY

LEVEE

PARK ACC

PRIVATE

SERVICE

Locator Map

Notes

Map Print Date: 2/17/2023 3:12 PM
Flume/Drainage channel



Map Scale
1: 917

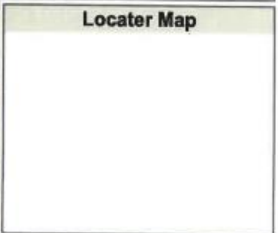


(c) 2016 Unified Government

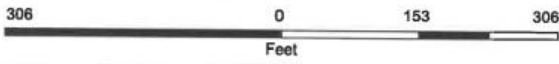
DISCLAIMER OF WARRANTY AND ACCURACY: Unified Government of Wyandotte Co./Kansas City, KS (UG) makes no representations or warranties about this map or its content, including, without limitation, accuracy, completeness, or fitness for any purpose. Users of this map document do so at their own risk; UG will not be liable to any such user for any loss or damage whatsoever.



Legend	
Street Lables	
	Kansas Regional Counties
	Missouri Regional Counties
Municipal Lables	
	Municipal Boundaries
Railroads	
	MAIN
	SPUR
	YARD
Roads	
	INTERSTATE
	HIGHWAY
	MAJOR ARTERIAL
	MINOR ARTERIAL
	COLLECTOR
	LOCAL
	ALLEY
	CEMETERY



Notes
Map Print Date: 3/20/2023 4:20 PM



Map Scale
1: 1,834



(c) 2015 Unified Government

DISCLAIMER OF WARRANTY AND ACCURACY: Unified Government of Wyandotte Co./Kansas City, KS (UG) makes no representations or warranties about this map or its content, including, without limitation, accuracy, completeness, or fitness for any purpose. Users of this map document do so at their own risk; UG will not be liable to any such user for any loss or damage whatsoever.

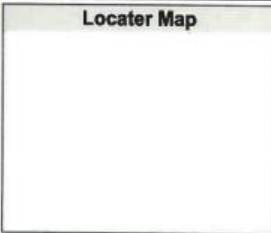
NCO Bldg A
2220 N 59th



GeoSpatial Services
710 N 7th St, Suite 200 | Kansas City, KS 66101
Ph: 913-573-2941 | gss@wycolck.org
www.wycolck.org/gss



Legend	
Street Labels	
Railroads	
—	MAIN
-	SPUR
—	YARD
Roads	
—	INTERSTATE
—	HIGHWAY
—	MAJOR ARTERIAL
—	MINOR ARTERIAL
—	COLLECTOR
—	LOCAL
—	ALLEY
—	CEMETERY
—	LEVEE
—	PARK ACC
—	PRIVATE
—	SERVICE



Notes
Map Print Date: 2/17/2023 4:21 PM
Curb



Map Scale
1: 1,834



(c) 2013 United Government

DISCLAIMER OF WARRANTY AND ACCURACY: Unified Government of Wyandotte Co./Kansas City, KS (UG) makes no representations or warranties about this map or its content, including, without limitation, accuracy, completeness, or fitness for any purpose. Users of this map document do so at their own risk; UG will not be liable to any such user for any loss or damage whatsoever.

NCO Btg B
2220 N 59th



GeoSpatial Services
710 N 7th St, Suite 200 | Kansas City, KS 66101
Ph: 913-573-2941 | gss@wyocok.org
www.wyocok.org/gss



Legend

Street Labels

Railroads

- MAIN
- SPUR
- YARD

Roads

- INTERSTATE
- HIGHWAY
- MAJOR ARTERIAL
- MINOR ARTERIAL
- COLLECTOR
- LOCAL
- ALLEY
- CEMETERY
- LEVEE
- PARK ACC
- PRIVATE
- SERVICE

Locator Map

Notes

Map Print Date: 2/17/2023 4:26 PM
Lower level sidewalk



Map Scale
1: 917

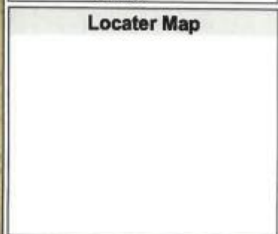


(c) 2015 Unified Government

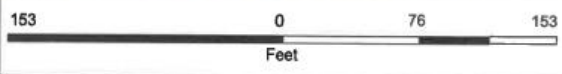
DISCLAIMER OF WARRANTY AND ACCURACY: Unified Government of Wyandotte Co./Kansas City, KS (UG) makes no representations or warranties about this map or its content, including, without limitation, accuracy, completeness, or fitness for any purpose. Users of this map document do so at their own risk; UG will not be liable to any such user for any loss or damage whatsoever.



Legend	
Street Labels	
Railroads	
—	MAIN
-	SPUR
-	YARD
Roads	
—	INTERSTATE
—	HIGHWAY
—	MAJOR ARTERIAL
—	MINOR ARTERIAL
—	COLLECTOR
—	LOCAL
—	ALLEY
—	CEMETERY
—	LEVEE
—	PARK ACC
—	PRIVATE
—	SERVICE



Notes
Map Print Date: 2/17/2023 4:31 PM
Sidewalk/Ramp
Stairs



Map Scale
1: 917



(c) 2015 Unified Government

DISCLAIMER OF WARRANTY AND ACCURACY: Unified Government of Wyandotte Co./Kansas City, KS (UG) makes no representations or warranties about this map or its content, including, without limitation, accuracy, completeness, or fitness for any purpose. Users of this map document do so at their own risk; UG will not be liable to any such user for any loss or damage whatsoever.

possibly extend ramp by 5ft for a total of 8'w x 88'L.



SUMNER

p2

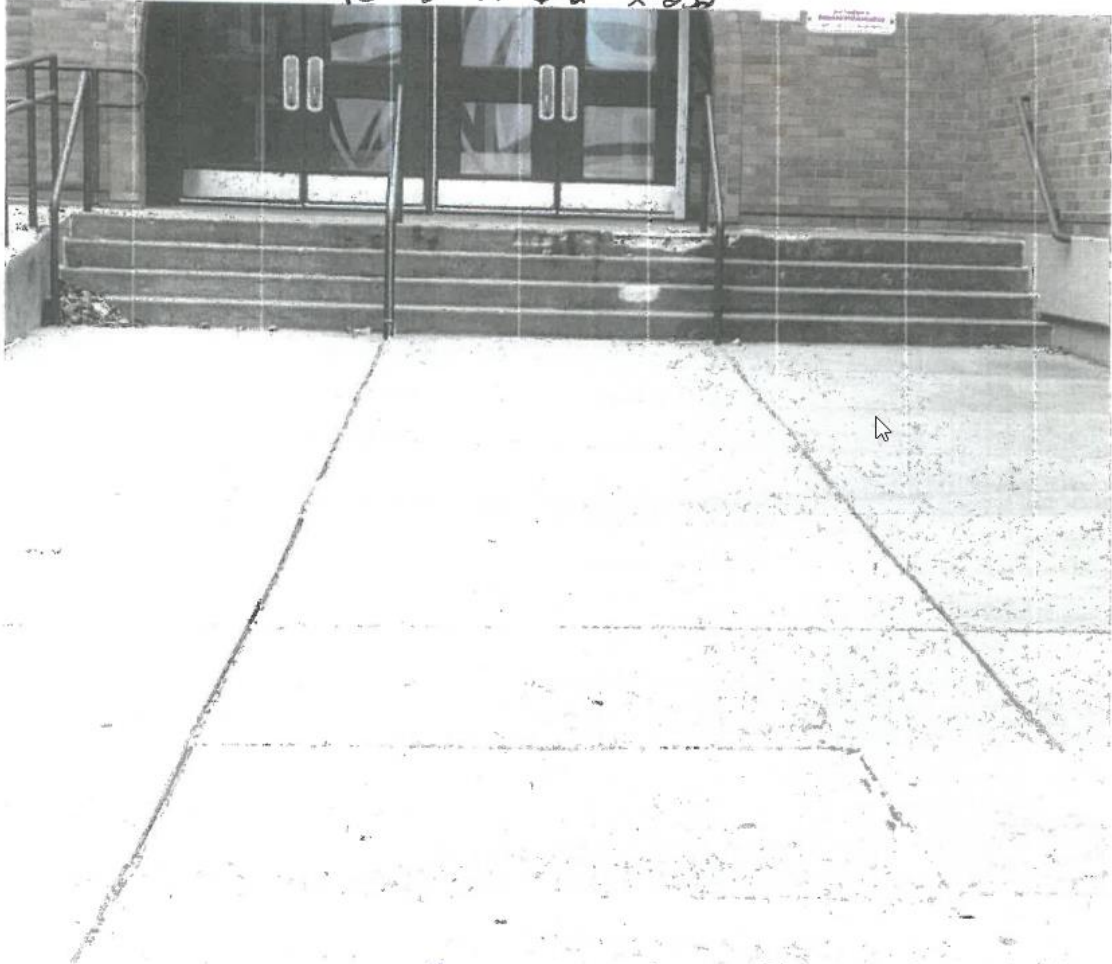
4 Steps 12" x 5 1/2" x 235"



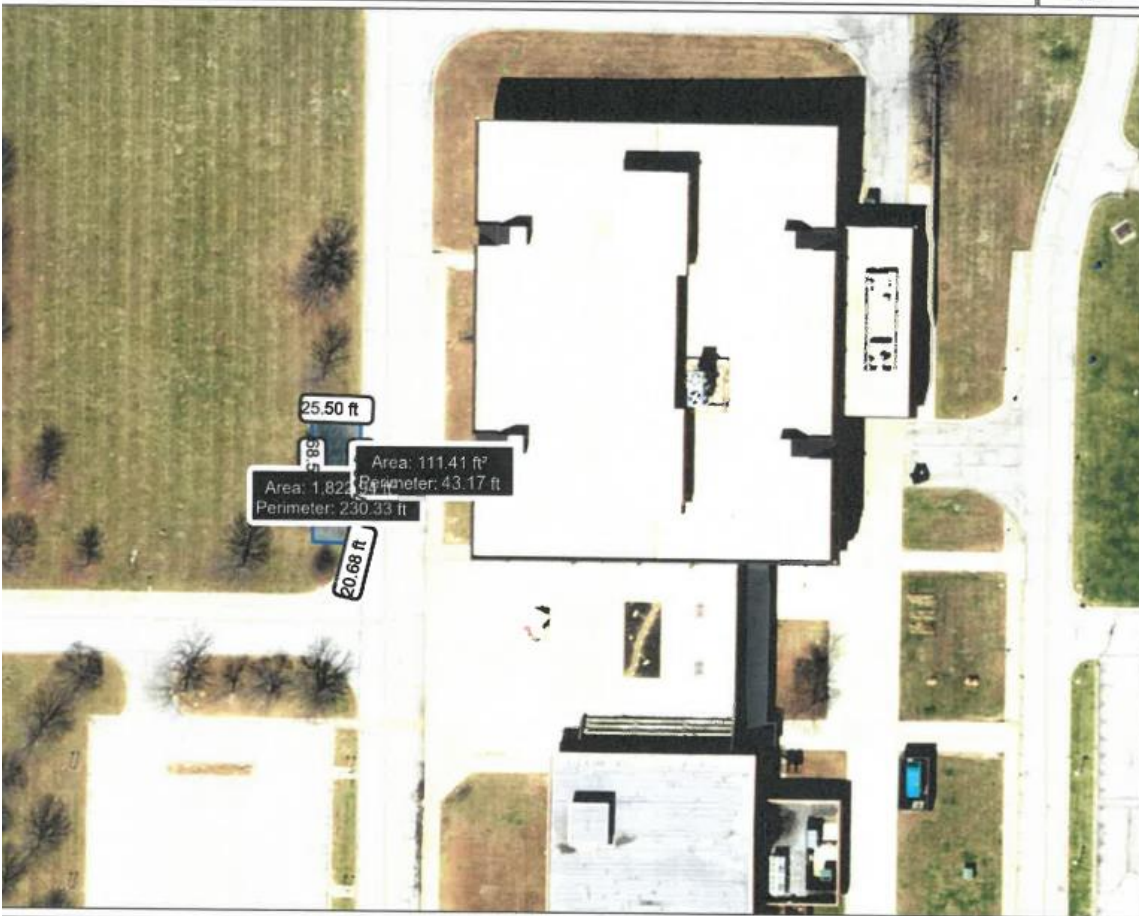
SUMNER

P3

Linings 10' x 10' Customer Area 252" x 168" 2"
Steps 12" x 6 1/2" x 239"

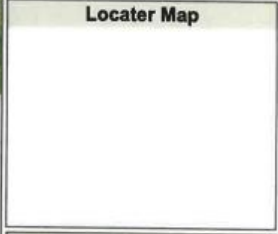


SOMNER PA



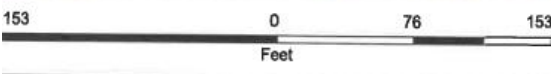
Legend

- Street Lables
- Kansas Regional Counties
- Missouri Regional Counties
- Municipal Labels
- Municipal Boundaries
- Railroads
 - MAIN
 - SPUR
 - YARD
- Roads
 - INTERSTATE
 - HIGHWAY
 - MAJOR ARTERIAL
 - MINOR ARTERIAL
 - COLLECTOR
 - LOCAL
 - ALLEY
 - CEMETERY



Notes

Map Print Date: 3/20/2023 4:41 PM
 Demo current curb, walk and tree and remove. Grade area for 6 ADA stalls adding 6" of concrete and new curbs. Pour new ADA ramp to connecting sidewalk to the building. Patch back asphalt drive, backfill curbs and grade to match new curbs, park spaces for stalls



Map Scale
 1: 917



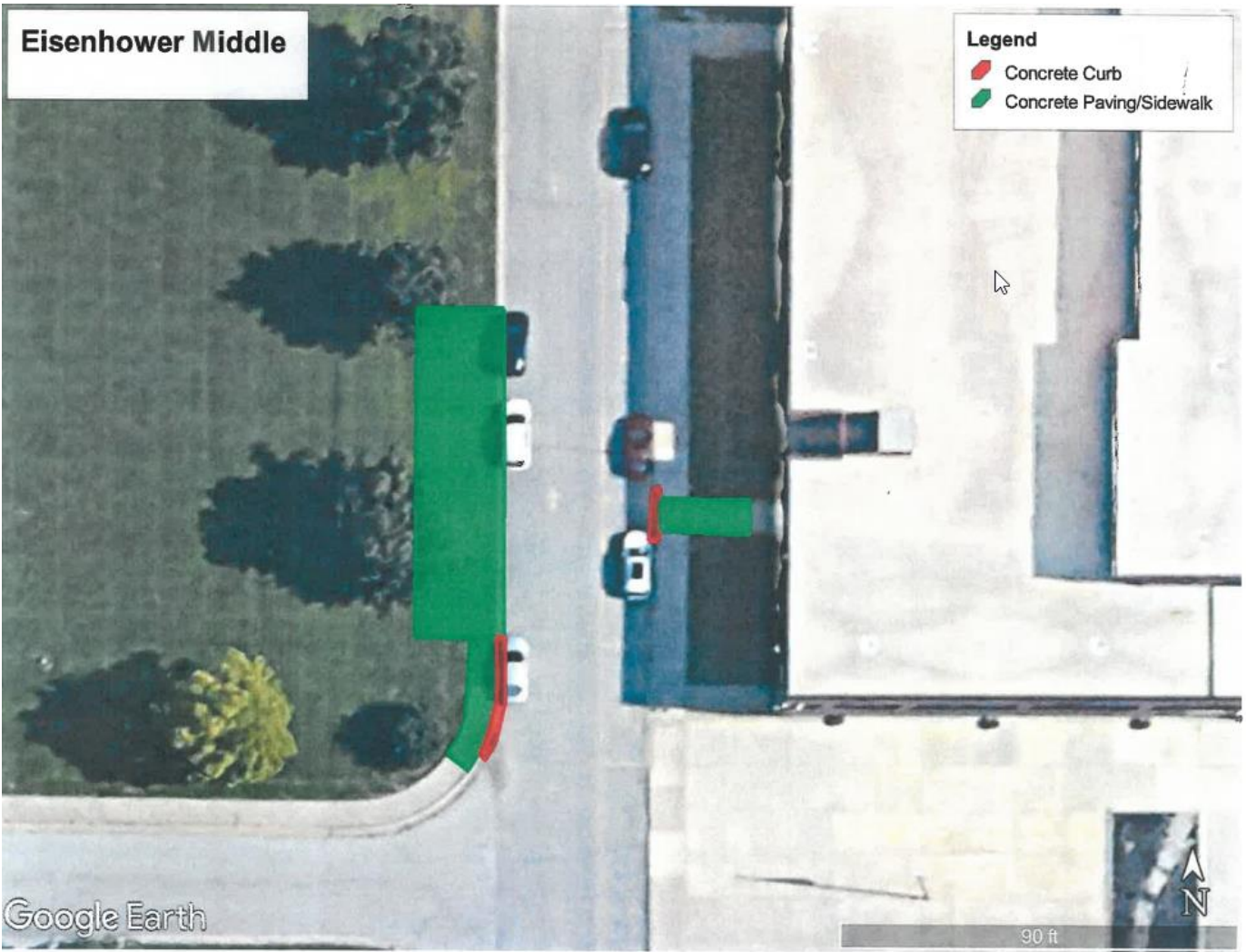
(c) 2015 Unified Government

DISCLAIMER OF WARRANTY AND ACCURACY: Unified Government of Wyandotte Co./Kansas City, KS (UG) makes no representations or warranties about this map or its content, including, without limitation, accuracy, completeness, or fitness for any purpose. Users of this map document do so at their own risk; UG will not be liable to any such user for any loss or damage whatsoever.

Eisenhower Middle

Legend

- Concrete Curb
- Concrete Paving/Sidewalk



Google Earth

90 ft