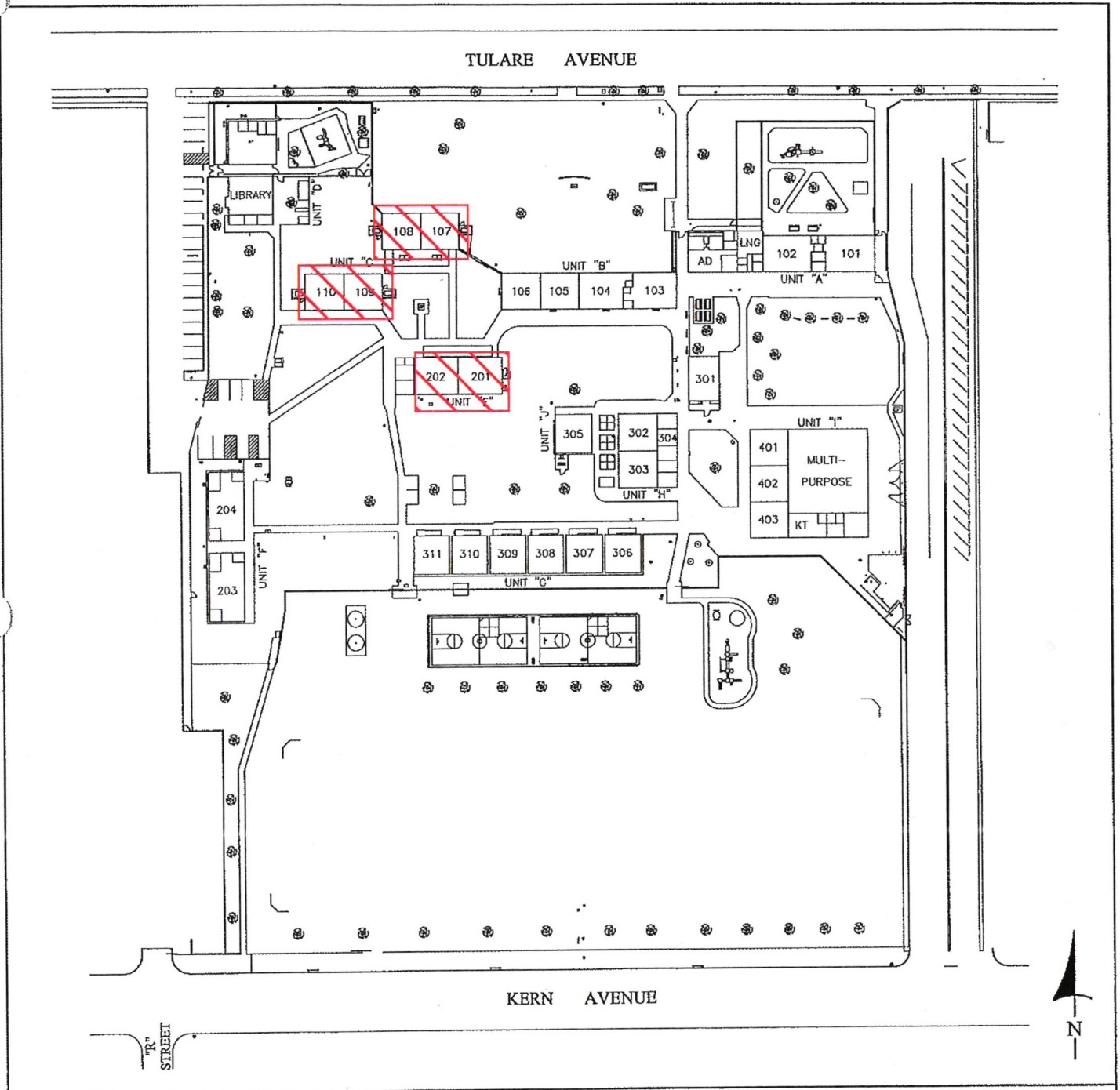


Tulare City Elementary School District
 Wilson Elementary School, Tulare County

New Construction
 Modernization/Reconstruction

Diagram of Building Area

Existing 1-A
 Proposed 2-A
 Final 3-A



Siteplan
 Wilson Elementary School
 955 East Tulare Avenue - Tulare, CA 93274
 Web Site - www.tcsdk8.org
 Phone (559) 685-7260 FAX (559) 687-6414

The above is measured in accordance with the laws and regulations governing the State School Building Lease-Purchase Program.
cadxservices@yahoo.com

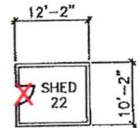
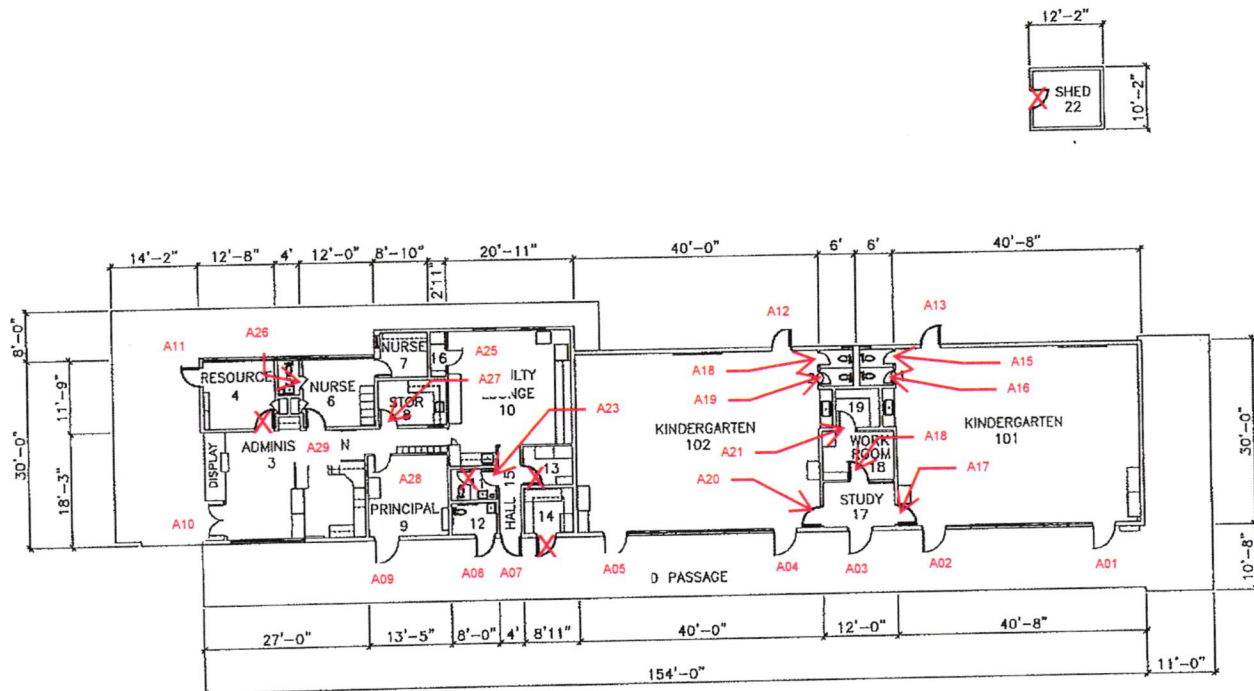
February 17, 2010
 Scale: 1"=120'-0"
 D.S.A.# 000000
 Page 1 of 35

Tulare City Elementary School District
Wilson Elementary School, Tulare County

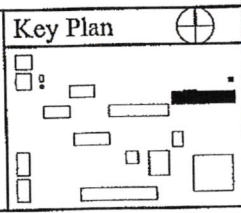
- New Construction
- Modernization/Reconstruction

Diagram of Building Area

- Existing 1-A
- Proposed 2-A
- Final 3-A



Building "A" Floor Plan
Wilson Elementary School
955 East Tulare Avenue - Tulare, CA 93274
Web Site - www.tcsdk8.org
Phone (559) 685-7260 FAX (559) 687-6414



The above is measured in accordance with the laws and regulations governing the State School Building Lease-Purchase Program.
cadxservices@yahoo.com

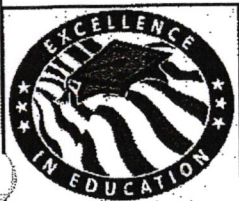
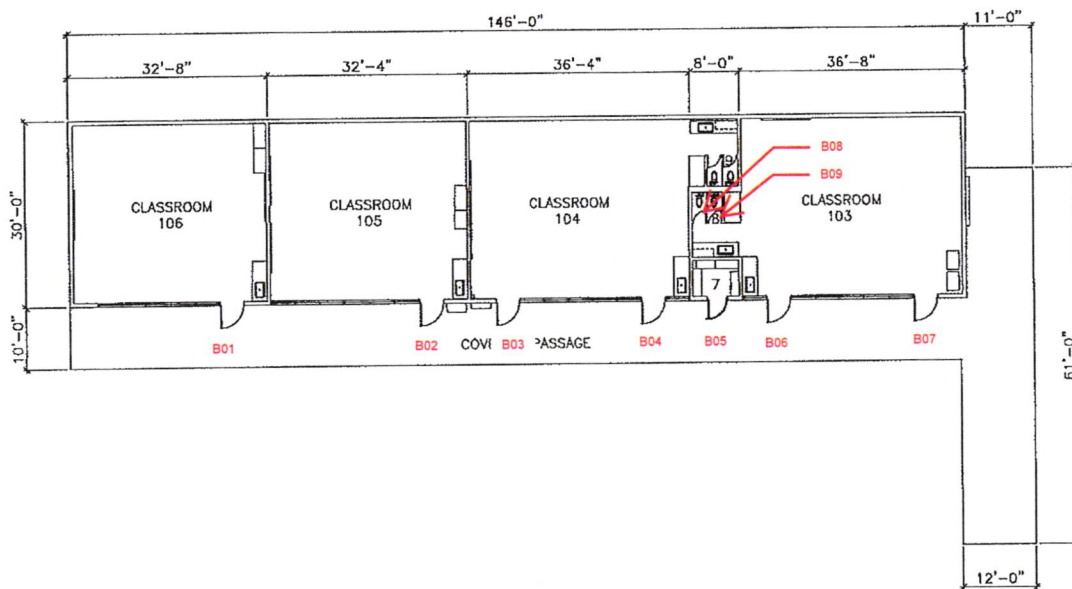
February 17, 2010
Scale: 1"=30'-0"
D.S.A.# 48024
Page 4 of 35

Tulare City Elementary School District
 Wilson Elementary School, Tulare County

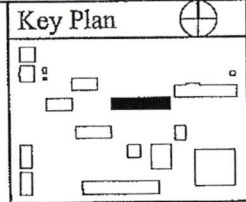
- New Construction
- Modernization/Reconstruction

Diagram of Building Area

- Existing 1-A
- Proposed 2-A
- Final 3-A



Building "B" Floor Plan
 Wilson Elementary School
 955 East Tulare Avenue - Tulare, CA 93274
 Web Site - www.tcsdk8.org
 Phone (559) 685-7260 FAX (559) 687-6414



The above is measured in accordance with the laws and regulations governing the State School Building Lease-Purchase Program.
cadxservices@yahoo.com

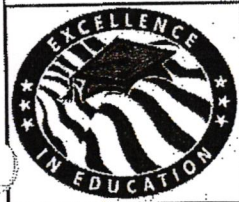
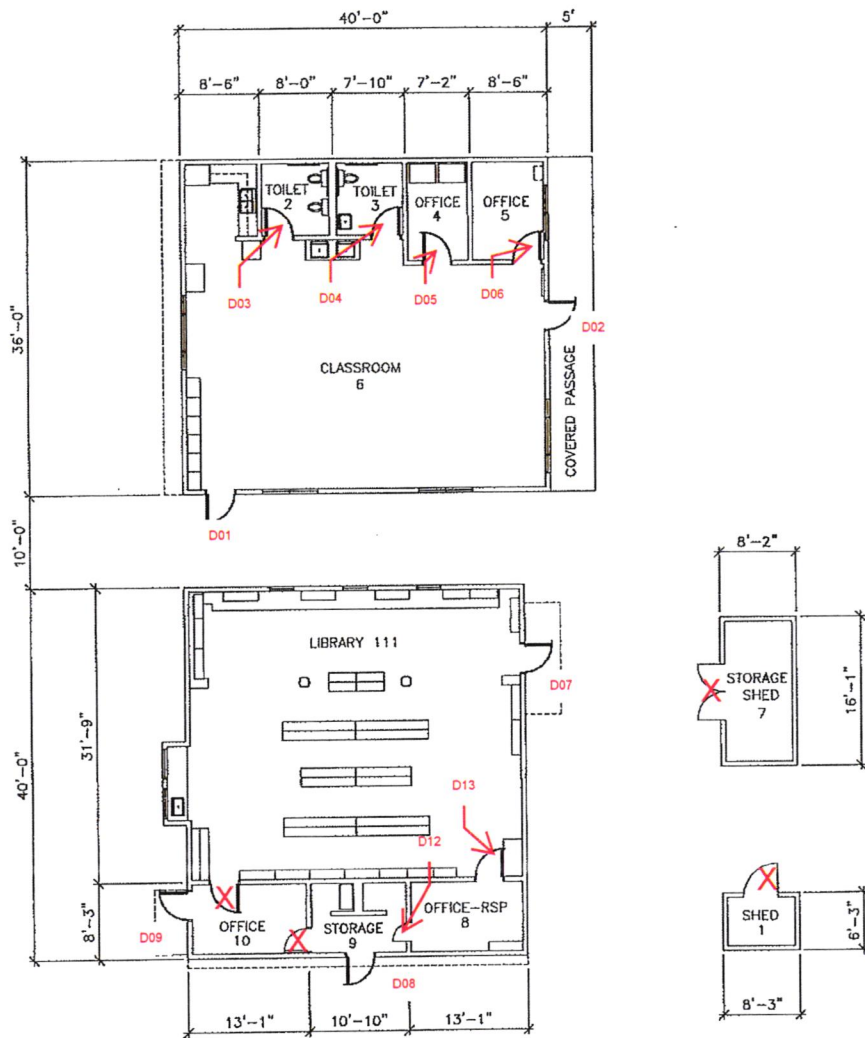
July 1, 2009
 Scale: 1"=30'-0"
 D.S.A.# 48024
 Page 7 of 35

Tulare City Elementary School District
 Wilson Elementary School, Tulare County

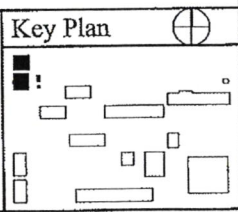
New Construction
 Modernization/Reconstruction

Diagram of Building Area

Existing 1-A
 Proposed 2-A
 Final 3-A



Building "D" Floor Plan
 Wilson Elementary School
 955 East Tulare Avenue - Tulare, CA 93274
 Web Site - www.tcsdk8.org
 Phone (559) 685-7260 FAX (559) 687-6414



The above is measured in accordance with the laws and regulations governing the State School Building Lease-Purchase Program.
cadxservices@yahoo.com

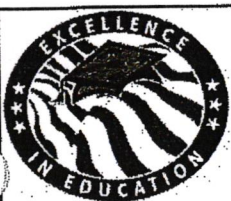
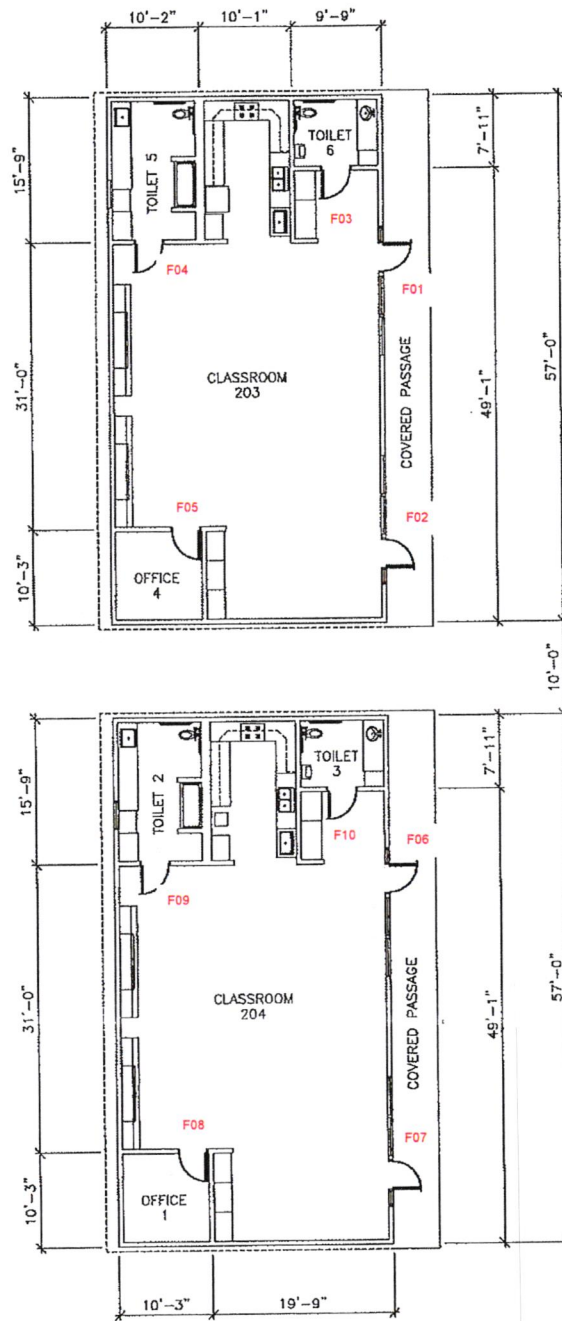
July 1, 2009
 Scale: 1"=20'-0"
 D.S.A.# 48024
 Page 13 of 35

Tulare City Elementary School District
Wilson Elementary School, Tulare County

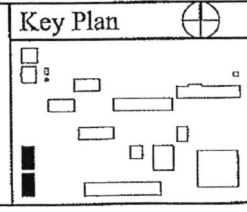
- New Construction
- Modernization/Reconstruction

Diagram of Building Area

- Existing 1-A
- Proposed 2-A
- Final 3-A



Building "F" Floor Plan
Wilson Elementary School
955 East Tulare Avenue - Tulare, CA 93274
Web Site - www.tcsdk8.org
Phone (559) 685-7260 FAX (559) 687-6414



The above is measured in accordance with the laws and regulations governing the State School Building Lease-Purchase Program.
cadxservices@yahoo.com

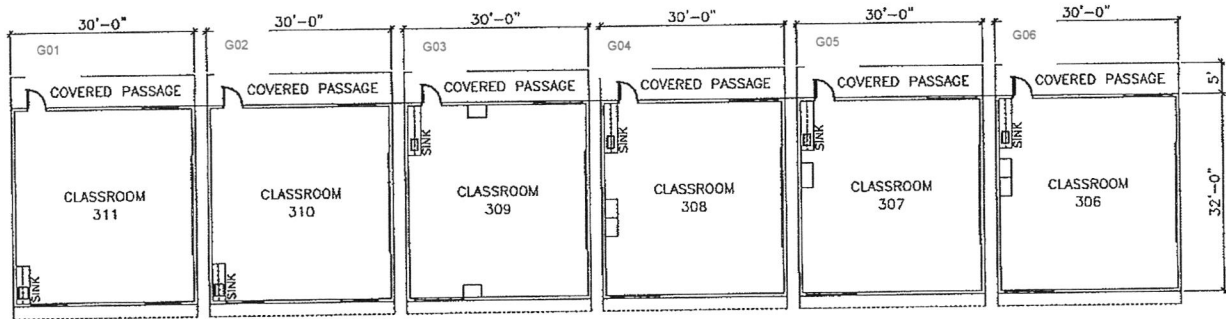
July 1, 2009
Scale: 1"=20'-0"
D.S.A.# 104540
Page 19 of 35

Tulare City Elementary School District
 Wilson Elementary School, Tulare County

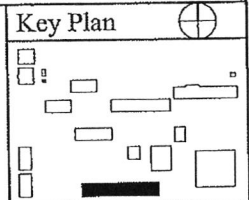
New Construction
 Modernization/Reconstruction

Diagram of Building Area

Existing 1-A
 Proposed 2-A
 Final 3-A



Building "G" Floor Plan
 Wilson Elementary School
 955 East Tulare Avenue - Tulare, CA 93274
 Web Site - www.tcsdk8.org
 Phone (559) 685-7260 FAX (559) 687-6414



The above is measured in accordance with the laws and regulations governing the State School Building Lease-Purchase Program.
cadxservices@yahoo.com

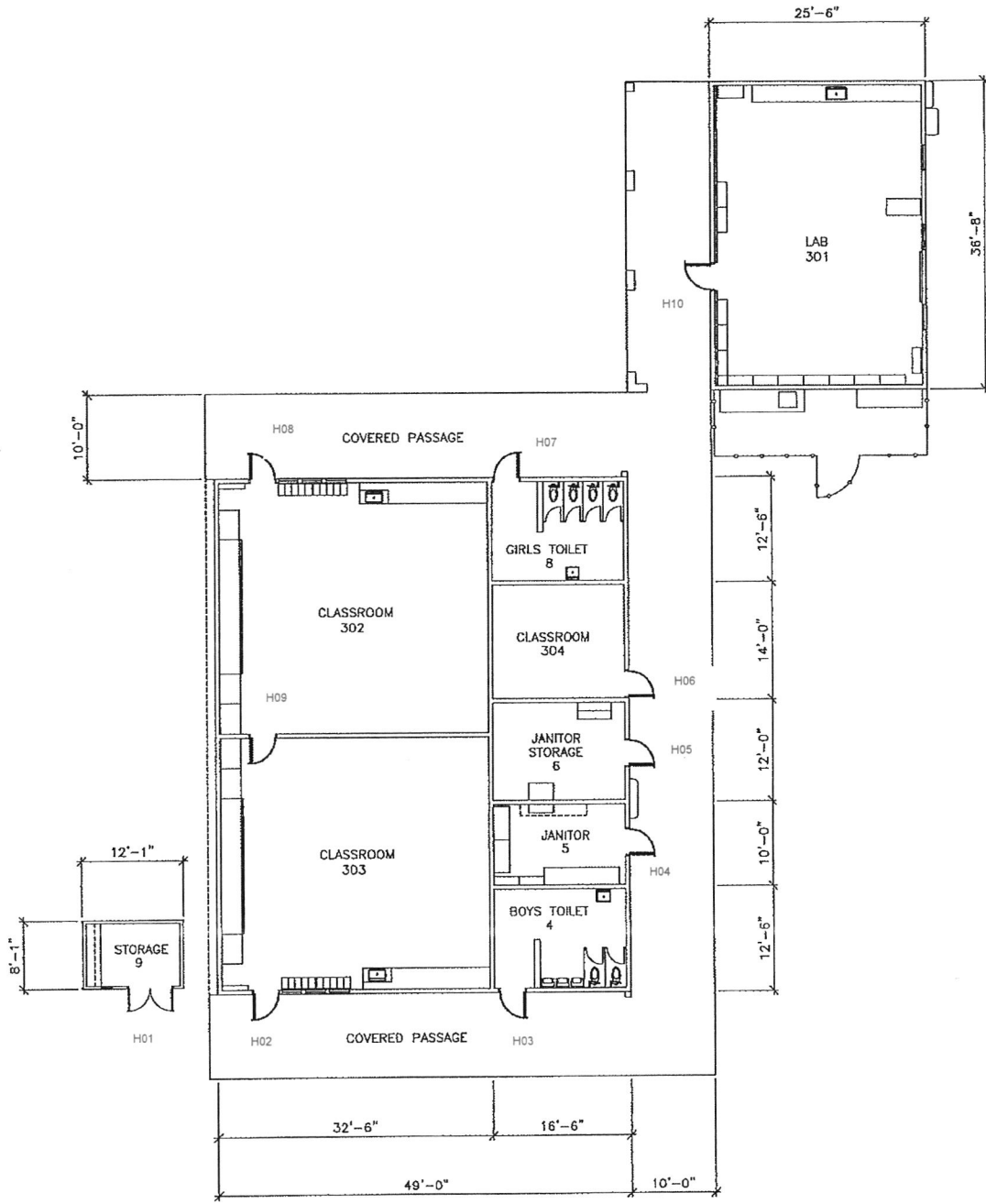
July 1, 2009
 Scale: 1"=30'-0"
 D.S.A.# 102100
 Page 22 of 35

Tulare City Elementary School District
Wilson Elementary School, Tulare County

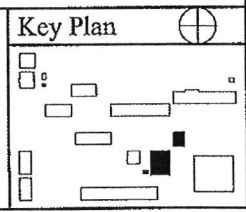
- New Construction
- Modernization/Reconstruction

Diagram of Building Area

- Existing 1-A
- Proposed 2-A
- Final 3-A



Building "H" Floor Plan
Wilson Elementary School
955 East Tulare Avenue - Tulare, CA 93274
Web Site - www.tcsdk8.org
Phone (559) 685-7260 FAX (559) 687-6414



The above is measured in accordance with the laws and regulations governing the State School Building Lease-Purchase Program.
cadxservices@yahoo.com

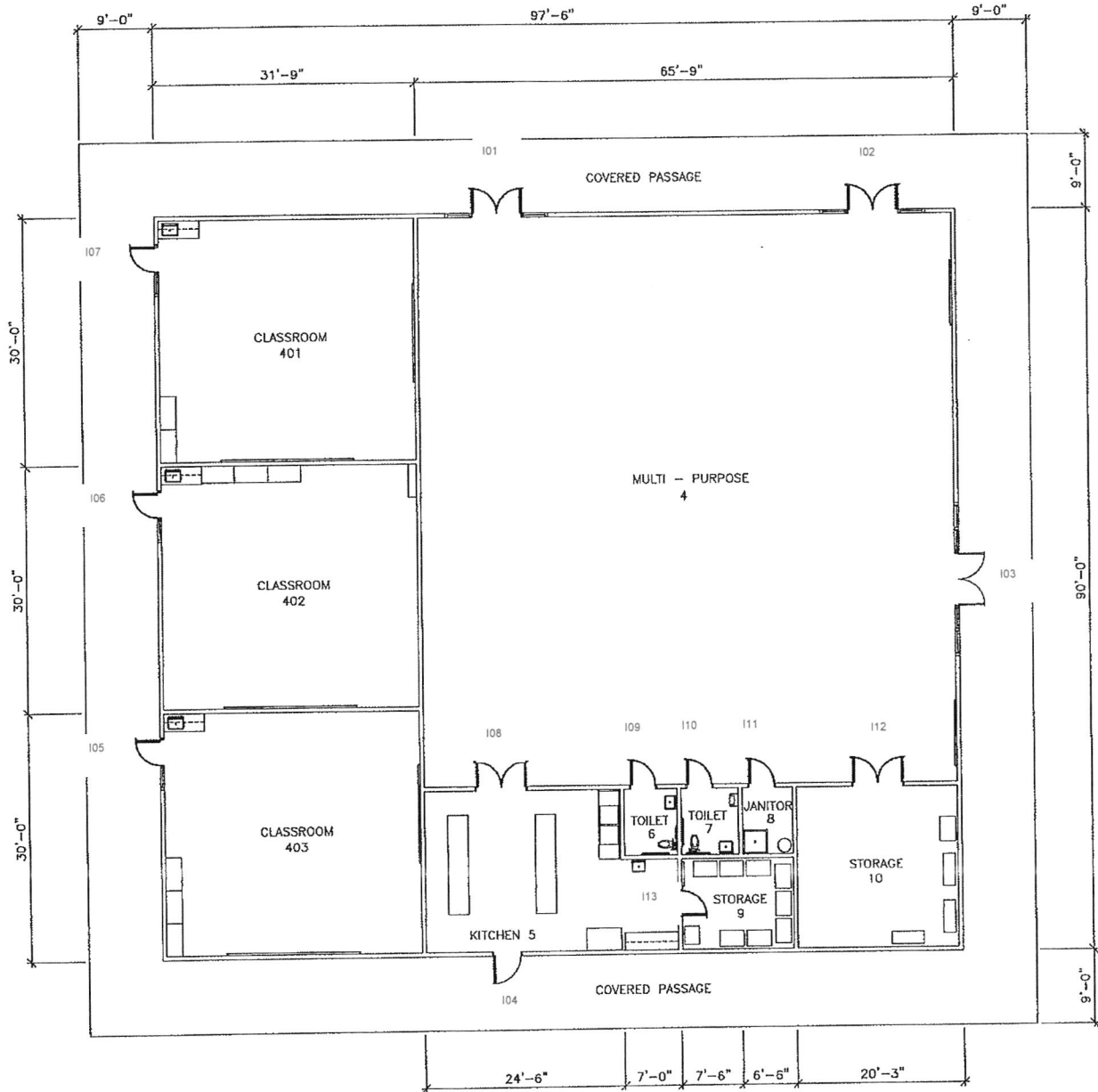
February 17, 2010
Scale: 1"=20'-0"
D.S.A.# 29472
Page 25 of 35

Tulare City Elementary School District
Wilson Elementary School, Tulare County

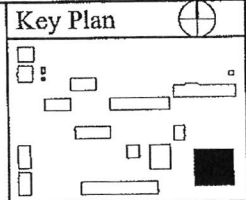
Diagram of Building Area

- New Construction
- Modernization/Reconstruction

- Existing 1-A
- Proposed 2-A
- Final 3-A



Building "I" Floor Plan
Wilson Elementary School
955 East Tulare Avenue - Tulare, CA 93274
Web Site - www.tcsdk8.org
Phone (559) 685-7260 FAX (559) 687-6414



The above is measured in accordance with the laws and regulations governing the State School Building Lease-Purchase Program.
cadxservices@yahoo.com

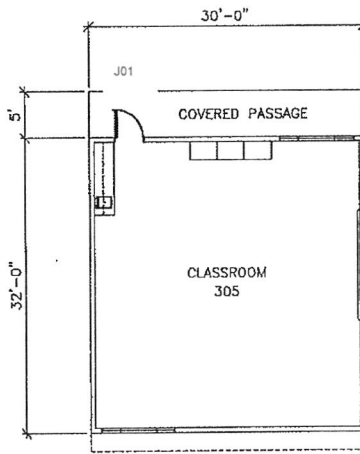
July 1, 2009
Scale: 1"=20'-0"
D.S.A.# 63561
Page 28 of 35

Tulare City Elementary School District
 Wilson Elementary School, Tulare County

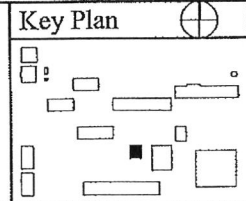
New Construction
 Modernization/Reconstruction

Diagram of Building Area

Existing 1-A
 Proposed 2-A
 Final 3-A



Building "J" Floor Plan
 Wilson Elementary School
 955 East Tulare Avenue - Tulare, CA 93274
 Web Site - www.tcsdk8.org
 Phone (559) 685-7260 FAX (559) 687-6414



The above is measured in accordance with the laws and regulations governing the State School Building Lease-Purchase Program.
cadxservices@yahoo.com

July 1, 2009
 Scale: 1"=20'-0"
 D.S.A.# 101084
 Page 31 of 35

Hardware Quantity Summary

SCHLAGE LOCK COMPANY

Qty	UM	Description	Catalog Number	Finish
2	EA	OFFICE LOCK	AL50TD SAT	626
3	EA	DEADBOLT	B660T	626
2	EA	OFFICE LOCK	L9050T 06N L583-363	626
2	EA	CLASSROOM LOCK	L9071T 06N	626
4	EA	STOREROOM LOCK	L9080T 06N	626
1	EA	ENTRANCE LOCK	L9453T 06A L583-363	626
2	EA	MORTISE DEADBOLT	L9463T XB11-720	626
9	EA	OFFICE LOCK	ND50TD RHO X 10-013	626
1	EA	STORE LOCK	ND66TD RHO X 10-013	626
6	EA	CLASSROOM SEC LOCK	ND95TD RHO	626
2	EA	CLASSROOM SEC LOCK	ND95TD RHO X 10-013	626
2	EA	STOREROOM LOCK	ND96TD RHO	626
2	EA	STOREROOM LOCK	ND96TD RHO X 10-013	626
33	EA	RIM CYLINDER	20-057-ICX (SPECIFY A, B OR C)	626
36	EA	MORTISE CYLINDER	20-061 ICX XQ11-948 (DOGGING)	626
121	EA	PRIMUS CORE ONLY	20-740	626
2	EA	PRIVACY SET	L9040 06A L583-363	626
4	EA	PRIVACY SET	L9040 06N L583-363	626
3	EA	PRIVACY SET	ND40S RHO X 10-013	626
7	EA	PASSAGE SET	ND10S RHO X 10-013	626

VON DUPRIN

Qty	UM	Description	Catalog Number	Finish
1	EA	PANIC HARDWARE	AXCD35A-NL-OP	626
3	EA	PANIC HARDWARE	AXCD98DT X 990DT	626
12	EA	PANIC HARDWARE	AXCD98NL X 990NL	626
20	EA	PANIC HARDWARE	AXCD98NL X 990NL (3'4" WIDE DOOR)	626

Control # : 1801

Project No. :

Project Name : WILSON ELEMENTARY SCHOOL LOCK UPGRADE

Revision #:

Print Date: 9:29:29 AM, 06/30/2020

Page :

1 of 1

Key Schedule by Key Symbol, by Area

BUILDING A

Qty	Key Symbol	Door No	KeyingRemarks	Keyed Products	Location	Hdg No
1		A01		1 PANIC HARDWARE AXCD98NL X 990NL 626 1 RIM CYLINDER 20-057-ICX (SPECIFY A, B OR C) 626 1 MORTISE CYLINDER 20-061 ICX XQ11-948 (DOGGING) 626 2 PRIMUS CORE ONLY 20-740 626	To	08
1		A02		1 PANIC HARDWARE AXCD98NL X 990NL 626 1 RIM CYLINDER 20-057-ICX (SPECIFY A, B OR C) 626 1 MORTISE CYLINDER 20-061 ICX XQ11-948 (DOGGING) 626 2 PRIMUS CORE ONLY 20-740 626	To	08
1		A03		1 CLASSROOM SEC LOCK ND95TD RHO X 10-013 626 2 PRIMUS CORE ONLY 20-740 626	To	04
1		A04		1 PANIC HARDWARE AXCD98NL X 990NL 626 1 RIM CYLINDER 20-057-ICX (SPECIFY A, B OR C) 626 1 MORTISE CYLINDER 20-061 ICX XQ11-948 (DOGGING) 626 2 PRIMUS CORE ONLY 20-740 626	To	08
1		A05		1 PANIC HARDWARE AXCD98NL X 990NL (3'4" WIDE DOOR) 626 1 RIM CYLINDER 20-057-ICX (SPECIFY A, B OR C) 626 1 MORTISE CYLINDER 20-061 ICX XQ11-948 (DOGGING) 626 2 PRIMUS CORE ONLY 20-740 626	To	07
1		A07		1 PANIC HARDWARE AXCD98NL X 990NL (3'4" WIDE DOOR) 626 1 RIM CYLINDER 20-057-ICX (SPECIFY A, B OR C) 626 1 MORTISE CYLINDER 20-061 ICX XQ11-948 (DOGGING) 626 2 PRIMUS CORE ONLY 20-740 626	To	07
1		A08		1 CLASSROOM LOCK L9071T 06N 626 2 PRIMUS CORE ONLY 20-740 626	To	01
1		A09		1 CLASSROOM LOCK L9071T 06N 626 2 PRIMUS CORE ONLY 20-740 626	To	01
1		A10		1 PANIC HARDWARE AXCD35A-NL-OP 626 1 RIM CYLINDER 20-057-ICX (SPECIFY A, B OR C) 626 1 MORTISE CYLINDER 20-061 ICX XQ11-948 (DOGGING) 626 2 PRIMUS CORE ONLY 20-740 626	To	18
1		A11		1 PANIC HARDWARE AXCD98NL X 990NL (3'4" WIDE DOOR) 626 1 RIM CYLINDER 20-057-ICX (SPECIFY A, B OR C) 626 1 MORTISE CYLINDER 20-061 ICX XQ11-948 (DOGGING) 626 2 PRIMUS CORE ONLY 20-740 626	To	07
1		A12		1 PANIC HARDWARE AXCD98NL X 990NL (3'4" WIDE DOOR) 626 1 RIM CYLINDER 20-057-ICX (SPECIFY A, B OR C) 626 1 MORTISE CYLINDER 20-061 ICX XQ11-948 (DOGGING) 626 2 PRIMUS CORE ONLY 20-740 626	To	07

Project: WILSON ELEMENTARY SCHOOL LOCK UPGRADE	Control #: 1801	Print Date: 06/30/2020	Project #:
Supplier: JRS BUILDERS HARDWARE CONSULTING INC.	Revision #:	Rev Date:	Key Sched Page: 1

Key Schedule by Key Symbol, by Area

BUILDING A

Qty	Key Symbol	Door No	KeyingRemarks	Keyed Products	Location	Hdg No
1		A13		1 PANIC HARDWARE AXCD98NL X 990NL (3'4" WIDE DOOR) 626 1 RIM CYLINDER 20-057-ICX (SPECIFY A, B OR C) 626 1 MORTISE CYLINDER 20-061 ICX XQ11-948 (DOGGING) 626 2 PRIMUS CORE ONLY 20-740 626	To	07
1	Not Keyed	A15		1 PASSAGE SET ND10S RHO X 10-013 626	To	14
1	Not Keyed	A16		1 PASSAGE SET ND10S RHO X 10-013 626	To	14
1		A17		1 OFFICE LOCK ND50TD RHO X 10-013 626 1 PRIMUS CORE ONLY 20-740 626	To	05
1	Not Keyed	A18		1 PASSAGE SET ND10S RHO X 10-013 626	To	14
1	Not Keyed	A19		1 PASSAGE SET ND10S RHO X 10-013 626	To	14
1		A20		1 OFFICE LOCK ND50TD RHO X 10-013 626 1 PRIMUS CORE ONLY 20-740 626	To	05
1		A21		1 OFFICE LOCK ND50TD RHO X 10-013 626 1 PRIMUS CORE ONLY 20-740 626	To	05
1	Not Keyed	A23		1 PRIVACY SET ND40S RHO X 10-013 626	To	03
1		A25		1 OFFICE LOCK ND50TD RHO X 10-013 626 1 PRIMUS CORE ONLY 20-740 626	To	05
1	Not Keyed	A26		1 PRIVACY SET ND40S RHO X 10-013 626	To	03
1		A27		1 OFFICE LOCK ND50TD RHO X 10-013 626 1 PRIMUS CORE ONLY 20-740 626	To	05
1		A28		1 OFFICE LOCK ND50TD RHO X 10-013 626 1 PRIMUS CORE ONLY 20-740 626	To	05
1		A29		1 OFFICE LOCK ND50TD RHO X 10-013 626 1 PRIMUS CORE ONLY 20-740 626	To	05

Project: WILSON ELEMENTARY SCHOOL LOCK UPGRADE	Control #: 1801	Print Date : 06/30/2020	Project #:
Supplier: JRS BUILDERS HARDWARE CONSULTING INC.	Revision #:	Rev Date:	Key Sched Page : 2

Key Schedule by Key Symbol, by Area

BUILDING B

Qty	Key Symbol	Door No	KeyingRemarks	Keyed Products	Location	Hdg No
1		B01		1 PANIC HARDWARE AXCD98NL X 990NL 626 1 RIM CYLINDER 20-057-ICX (SPECIFY A, B OR C) 626 1 MORTISE CYLINDER 20-061 ICX XQ11-948 (DOGGING) 626 2 PRIMUS CORE ONLY 20-740 626	To	08
1		B02		1 PANIC HARDWARE AXCD98NL X 990NL 626 1 RIM CYLINDER 20-057-ICX (SPECIFY A, B OR C) 626 1 MORTISE CYLINDER 20-061 ICX XQ11-948 (DOGGING) 626 2 PRIMUS CORE ONLY 20-740 626	To	08
1		B03		1 PANIC HARDWARE AXCD98NL X 990NL 626 1 RIM CYLINDER 20-057-ICX (SPECIFY A, B OR C) 626 1 MORTISE CYLINDER 20-061 ICX XQ11-948 (DOGGING) 626 2 PRIMUS CORE ONLY 20-740 626	To	08
1		B04		1 PANIC HARDWARE AXCD98NL X 990NL 626 1 RIM CYLINDER 20-057-ICX (SPECIFY A, B OR C) 626 1 MORTISE CYLINDER 20-061 ICX XQ11-948 (DOGGING) 626 2 PRIMUS CORE ONLY 20-740 626	To	08
1		B05		1 STOREROOM LOCK ND96TD RHO X 10-013 626 1 PRIMUS CORE ONLY 20-740 626	To	06
1		B06		1 PANIC HARDWARE AXCD98NL X 990NL 626 1 RIM CYLINDER 20-057-ICX (SPECIFY A, B OR C) 626 1 MORTISE CYLINDER 20-061 ICX XQ11-948 (DOGGING) 626 2 PRIMUS CORE ONLY 20-740 626	To	08
1		B07		1 PANIC HARDWARE AXCD98NL X 990NL 626 1 RIM CYLINDER 20-057-ICX (SPECIFY A, B OR C) 626 1 MORTISE CYLINDER 20-061 ICX XQ11-948 (DOGGING) 626 2 PRIMUS CORE ONLY 20-740 626	To	08
1	Not Keyed	B08		1 PASSAGE SET ND10S RHO X 10-013 626	To	14
1	Not Keyed	B09		1 PASSAGE SET ND10S RHO X 10-013 626	To	14

Project: WILSON ELEMENTARY SCHOOL LOCK UPGRADE	Control #: 1801	Print Date: 06/30/2020	Project #:
Supplier: JRS BUILDERS HARDWARE CONSULTING INC.	Revision #:	Rev Date:	Key Sched Page: 3

Key Schedule by Key Symbol, by Area

BUILDING D

Qty	Key Symbol	Door No	KeyingRemarks	Keyed Products	Location	Hdg No
1		D01		1 PANIC HARDWARE AXCD98NL X 990NL (3'4" WIDE DOOR) 6; 1 RIM CYLINDER 20-057-ICX (SPECIFY A, B OR C) 626 1 MORTISE CYLINDER 20-061 ICX XQ11-948 (DOGGING) 626 2 PRIMUS CORE ONLY 20-740 626	To	07
1		D02		1 PANIC HARDWARE AXCD98NL X 990NL (3'4" WIDE DOOR) 6; 1 RIM CYLINDER 20-057-ICX (SPECIFY A, B OR C) 626 1 MORTISE CYLINDER 20-061 ICX XQ11-948 (DOGGING) 626 2 PRIMUS CORE ONLY 20-740 626	To	07
1	Not Keyed	D03		1 PASSAGE SET ND10S RHO X 10-013 626	To	14
1	Not Keyed	D04		1 PRIVACY SET ND40S RHO X 10-013 626	To	03
1		D05		1 OFFICE LOCK ND50TD RHO X 10-013 626 1 PRIMUS CORE ONLY 20-740 626	To	05
1		D06		1 OFFICE LOCK ND50TD RHO X 10-013 626 1 PRIMUS CORE ONLY 20-740 626	To	05
1		D07		1 PANIC HARDWARE AXCD98NL X 990NL (3'4" WIDE DOOR) 6; 1 RIM CYLINDER 20-057-ICX (SPECIFY A, B OR C) 626 1 MORTISE CYLINDER 20-061 ICX XQ11-948 (DOGGING) 626 2 PRIMUS CORE ONLY 20-740 626	To	07
1		D08		1 STOREROOM LOCK L9080T 06N 626 1 PRIMUS CORE ONLY 20-740 626	To	17
1		D09		1 PANIC HARDWARE AXCD98NL X 990NL (3'4" WIDE DOOR) 6; 1 RIM CYLINDER 20-057-ICX (SPECIFY A, B OR C) 626 1 MORTISE CYLINDER 20-061 ICX XQ11-948 (DOGGING) 626 2 PRIMUS CORE ONLY 20-740 626	To	07
1		D12		1 OFFICE LOCK AL50TD SAT 626 1 PRIMUS CORE ONLY 20-740 626	To	19
1		D13		1 OFFICE LOCK AL50TD SAT 626 1 PRIMUS CORE ONLY 20-740 626	To	19

Project: WILSON ELEMENTARY SCHOOL LOCK UPGRADE	Control #: 1801	Print Date : 06/30/2020	Project #:
Supplier: JRS BUILDERS HARDWARE CONSULTING INC.	Revision #:	Rev Date:	Key Sched Page : 4

Key Schedule by Key Symbol, by Area

BUILDING F

Qty	Key Symbol	Door No	KeyingRemarks	Keyed Products	Location	Hdg No
1		F01		1 PANIC HARDWARE AXCD98NL X 990NL (3'4" WIDE DOOR) 6; 1 RIM CYLINDER 20-057-ICX (SPECIFY A, B OR C) 626 1 MORTISE CYLINDER 20-061 ICX XQ11-948 (DOGGING) 626 2 PRIMUS CORE ONLY 20-740 626	To	07
1		F02		1 PANIC HARDWARE AXCD98NL X 990NL (3'4" WIDE DOOR) 6; 1 RIM CYLINDER 20-057-ICX (SPECIFY A, B OR C) 626 1 MORTISE CYLINDER 20-061 ICX XQ11-948 (DOGGING) 626 2 PRIMUS CORE ONLY 20-740 626	To	07
1	Not Keyed	F03		1 PRIVACY SET L9040 06N L583-363 626	To	12
1	Not Keyed	F04		1 PRIVACY SET L9040 06N L583-363 626	To	12
1		F05		1 OFFICE LOCK L9050T 06N L583-363 626 1 PRIMUS CORE ONLY 20-740 626	To	11
1		F06		1 PANIC HARDWARE AXCD98NL X 990NL (3'4" WIDE DOOR) 6; 1 RIM CYLINDER 20-057-ICX (SPECIFY A, B OR C) 626 1 MORTISE CYLINDER 20-061 ICX XQ11-948 (DOGGING) 626 2 PRIMUS CORE ONLY 20-740 626	To	07
1		F07		1 PANIC HARDWARE AXCD98NL X 990NL (3'4" WIDE DOOR) 6; 1 RIM CYLINDER 20-057-ICX (SPECIFY A, B OR C) 626 1 MORTISE CYLINDER 20-061 ICX XQ11-948 (DOGGING) 626 2 PRIMUS CORE ONLY 20-740 626	To	07
1		F08		1 OFFICE LOCK L9050T 06N L583-363 626 1 PRIMUS CORE ONLY 20-740 626	To	11
1	Not Keyed	F09		1 PRIVACY SET L9040 06N L583-363 626	To	12
1	Not Keyed	F10		1 PRIVACY SET L9040 06N L583-363 626	To	12

Project: WILSON ELEMENTARY SCHOOL LOCK UPGRADE	Control #: 1801	Print Date: 06/30/2020	Project #:
Supplier: JRS BUILDERS HARDWARE CONSULTING INC.	Revision #:	Rev Date:	Key Sched Page: 5

Key Schedule by Key Symbol, by Area

BUILDING G

Qty	Key Symbol	Door No	KeyingRemarks	Keyed Products	Location	Hdg No
1		G01		1 CLASSROOM SEC LOCK ND95TD RHO 626 2 PRIMUS CORE ONLY 20-740 626	To	20
1		G02		1 CLASSROOM SEC LOCK ND95TD RHO 626 2 PRIMUS CORE ONLY 20-740 626	To	20
1		G03		1 CLASSROOM SEC LOCK ND95TD RHO 626 2 PRIMUS CORE ONLY 20-740 626	To	20
1		G04		1 CLASSROOM SEC LOCK ND95TD RHO 626 2 PRIMUS CORE ONLY 20-740 626	To	20
1		G05		1 CLASSROOM SEC LOCK ND95TD RHO 626 2 PRIMUS CORE ONLY 20-740 626	To	20
1		G06		1 CLASSROOM SEC LOCK ND95TD RHO 626 2 PRIMUS CORE ONLY 20-740 626	To	20

Project: WILSON ELEMENTARY SCHOOL LOCK UPGRADE	Control #: 1801	Print Date : 06/30/2020	Project #:
Supplier: JRS BUILDERS HARDWARE CONSULTING INC.	Revision #:	Rev Date:	Key Sched Page : 6

Key Schedule by Key Symbol, by Area

BUILDING H

Qty	Key Symbol	Door No	KeyingRemarks	Keyed Products	Location	Hdg No
1		H01		1 DEADBOLT B660T 626 1 STOREROOM LOCK ND96TD RHO X 10-013 626 2 PRIMUS CORE ONLY 20-740 626	To	09
1		H02		1 PANIC HARDWARE AXCD98NL X 990NL (3'4" WIDE DOOR) 626 1 RIM CYLINDER 20-057-ICX (SPECIFY A, B OR C) 626 1 MORTISE CYLINDER 20-061 ICX XQ11-948 (DOGGING) 626 2 PRIMUS CORE ONLY 20-740 626	To	07
1		H03		1 MORTISE DEADBOLT L9463T XB11-720 626 1 PRIMUS CORE ONLY 20-740 626	To	15
1		H04		1 STOREROOM LOCK ND96TD RHO 626 1 PRIMUS CORE ONLY 20-740 626	To	02
1		H05		1 STOREROOM LOCK ND96TD RHO 626 1 PRIMUS CORE ONLY 20-740 626	To	02
1		H06		1 PRIMUS CORE ONLY 20-740 626	To	21
1		H07		1 MORTISE DEADBOLT L9463T XB11-720 626 1 PRIMUS CORE ONLY 20-740 626	To	15
1		H08		1 PANIC HARDWARE AXCD98NL X 990NL (3'4" WIDE DOOR) 626 1 RIM CYLINDER 20-057-ICX (SPECIFY A, B OR C) 626 1 MORTISE CYLINDER 20-061 ICX XQ11-948 (DOGGING) 626 2 PRIMUS CORE ONLY 20-740 626	To	07
1		H09		1 STORE LOCK ND66TD RHO X 10-013 626 2 PRIMUS CORE ONLY 20-740 626	To	10
1		H10		1 PANIC HARDWARE AXCD98NL X 990NL (3'4" WIDE DOOR) 626 1 RIM CYLINDER 20-057-ICX (SPECIFY A, B OR C) 626 1 MORTISE CYLINDER 20-061 ICX XQ11-948 (DOGGING) 626 2 PRIMUS CORE ONLY 20-740 626	To	07

Project: WILSON ELEMENTARY SCHOOL LOCK UPGRADE	Control #: 1801	Print Date: 06/30/2020	Project #:
Supplier: JRS BUILDERS HARDWARE CONSULTING INC.	Revision #:	Rev Date:	Key Sched Page: 7

Key Schedule by Key Symbol, by Area

BUILDING I

Qty	Key Symbol	Door No	KeyingRemarks	Keyed Products	Location	Hdg No
1		I01		1 PANIC HARDWARE AXCD98DT X 990DT 626 1 PANIC HARDWARE AXCD98NL X 990NL 626 1 RIM CYLINDER 20-057-ICX (SPECIFY A, B OR C) 626 2 MORTISE CYLINDER 20-061 ICX XQ11-948 (DOGGING) 626 3 PRIMUS CORE ONLY 20-740 626	To	13
1		I02		1 PANIC HARDWARE AXCD98DT X 990DT 626 1 PANIC HARDWARE AXCD98NL X 990NL 626 1 RIM CYLINDER 20-057-ICX (SPECIFY A, B OR C) 626 2 MORTISE CYLINDER 20-061 ICX XQ11-948 (DOGGING) 626 3 PRIMUS CORE ONLY 20-740 626	To	13
1		I03		1 PANIC HARDWARE AXCD98DT X 990DT 626 1 PANIC HARDWARE AXCD98NL X 990NL 626 1 RIM CYLINDER 20-057-ICX (SPECIFY A, B OR C) 626 2 MORTISE CYLINDER 20-061 ICX XQ11-948 (DOGGING) 626 3 PRIMUS CORE ONLY 20-740 626	To	13
1		I04		1 PANIC HARDWARE AXCD98NL X 990NL (3'4" WIDE DOOR) 626 1 RIM CYLINDER 20-057-ICX (SPECIFY A, B OR C) 626 1 MORTISE CYLINDER 20-061 ICX XQ11-948 (DOGGING) 626 2 PRIMUS CORE ONLY 20-740 626	To	07
1		I05		1 PANIC HARDWARE AXCD98NL X 990NL (3'4" WIDE DOOR) 626 1 RIM CYLINDER 20-057-ICX (SPECIFY A, B OR C) 626 1 MORTISE CYLINDER 20-061 ICX XQ11-948 (DOGGING) 626 2 PRIMUS CORE ONLY 20-740 626	To	07
1		I06		1 PANIC HARDWARE AXCD98NL X 990NL (3'4" WIDE DOOR) 626 1 RIM CYLINDER 20-057-ICX (SPECIFY A, B OR C) 626 1 MORTISE CYLINDER 20-061 ICX XQ11-948 (DOGGING) 626 2 PRIMUS CORE ONLY 20-740 626	To	07
1		I07		1 PANIC HARDWARE AXCD98NL X 990NL (3'4" WIDE DOOR) 626 1 RIM CYLINDER 20-057-ICX (SPECIFY A, B OR C) 626 1 MORTISE CYLINDER 20-061 ICX XQ11-948 (DOGGING) 626 2 PRIMUS CORE ONLY 20-740 626	To	07
1		I08		1 ENTRANCE LOCK L9453T 06A L583-363 626 1 PRIMUS CORE ONLY 20-740 626	To	22
1		I09		1 DEADBOLT B660T 626 2 PRIMUS CORE ONLY 20-740 626 1 PRIVACY SET L9040 06A L583-363 626	To	16
1		I10		1 DEADBOLT B660T 626 2 PRIMUS CORE ONLY 20-740 626 1 PRIVACY SET L9040 06A L583-363 626	To	16

Project: WILSON ELEMENTARY SCHOOL LOCK UPGRADE	Control #: 1801	Print Date: 06/30/2020	Project #:
Supplier: JRS BUILDERS HARDWARE CONSULTING INC.	Revision #:	Rev Date:	Key Sched Page: 8

Key Schedule by Key Symbol, by Area

BUILDING I

Qty	Key Symbol	Door No	KeyingRemarks	Keyed Products	Location	Hdg No
1		I11		1 STOREROOM LOCK L9080T 06N 626 1 PRIMUS CORE ONLY 20-740 626	To	17
1		I12		1 STOREROOM LOCK L9080T 06N 626 1 PRIMUS CORE ONLY 20-740 626	To	17
1		I13		1 STOREROOM LOCK L9080T 06N 626 1 PRIMUS CORE ONLY 20-740 626	To	17

Project: WILSON ELEMENTARY SCHOOL LOCK UPGRADE	Control #: 1801	Print Date : 06/30/2020	Project #:
Supplier: JRS BUILDERS HARDWARE CONSULTING INC.	Revision #:	Rev Date:	Key Sched Page : 9

Key Schedule by Key Symbol, by Area

BUILDING J

Qty	Key Symbol	Door No	KeyingRemarks	Keyed Products	Location	Hdg No
1		J01		1 CLASSROOM SEC LOCK ND95TD RHO X 10-013 626 2 PRIMUS CORE ONLY 20-740 626	To	04

Project: WILSON ELEMENTARY SCHOOL LOCK UPGRADE	Control #: 1801	Print Date : 06/30/2020	Project #:
Supplier: JRS BUILDERS HARDWARE CONSULTING INC.	Revision #:	Rev Date:	Key Sched Page : 10