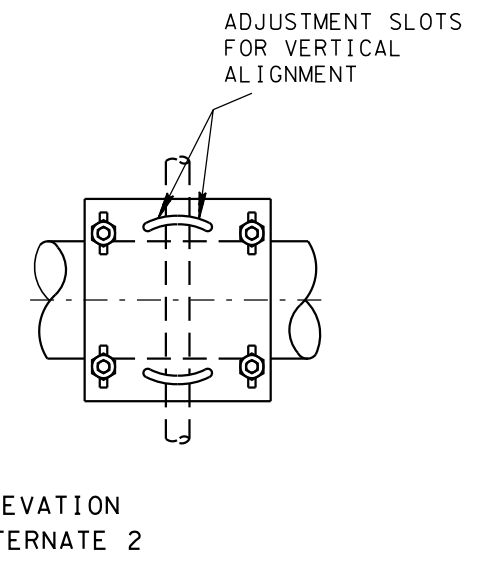
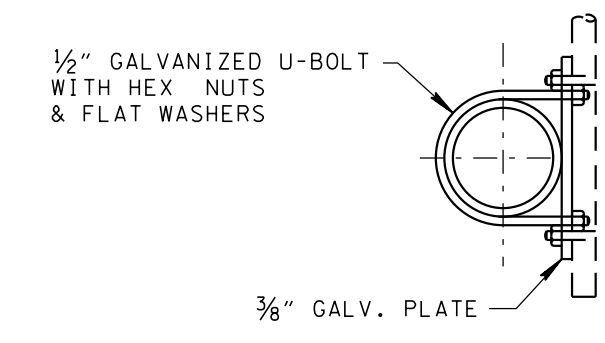
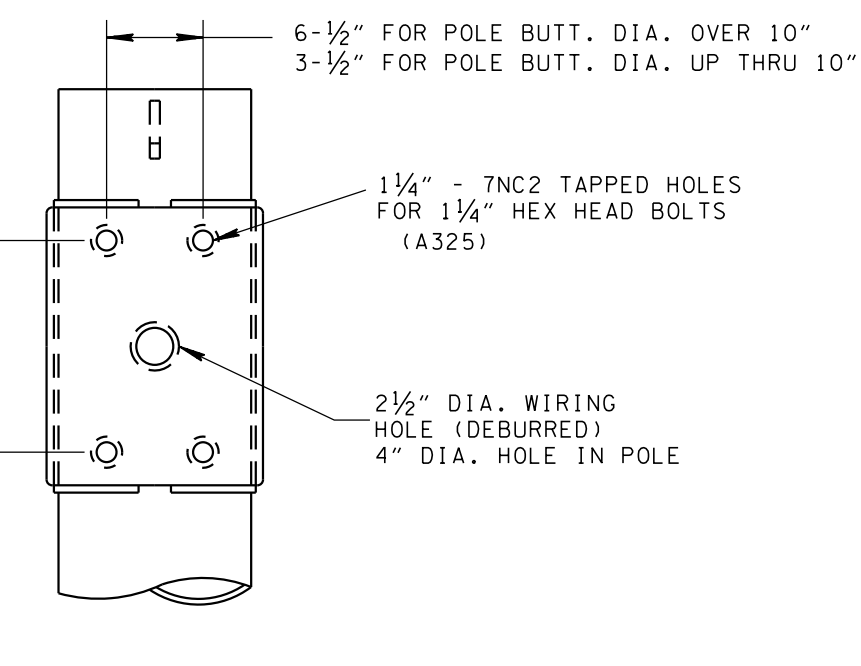
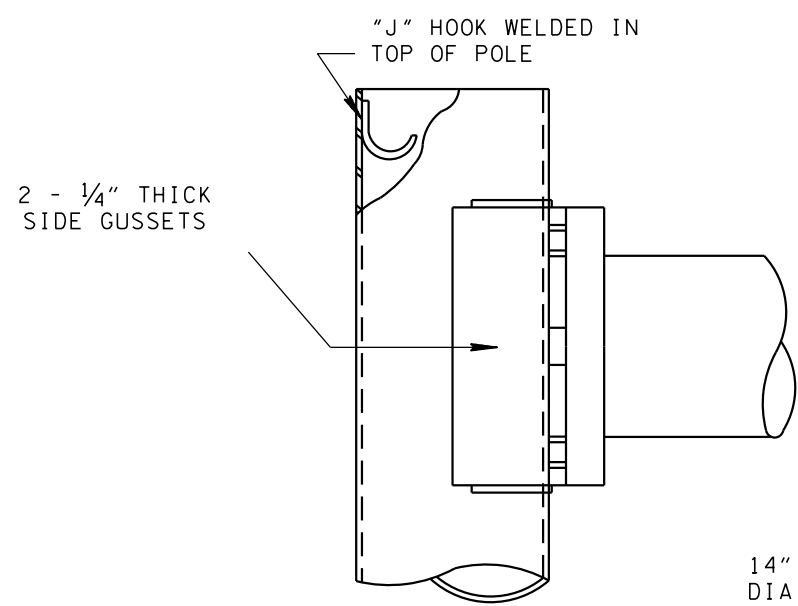
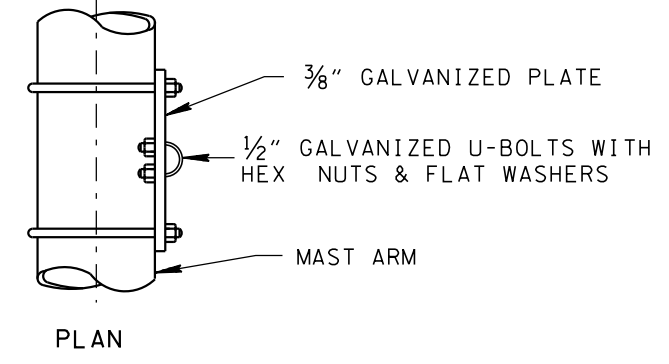
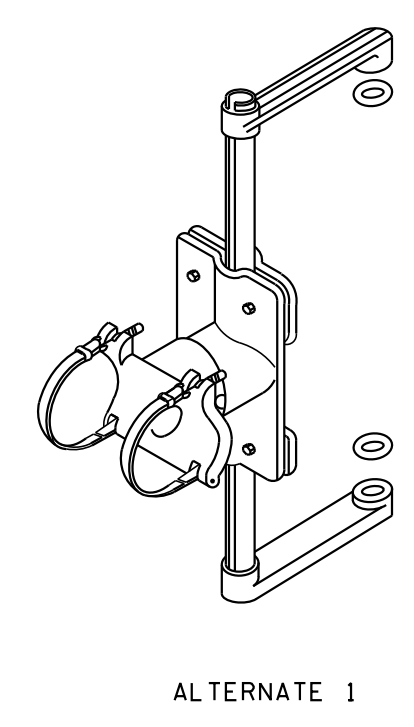
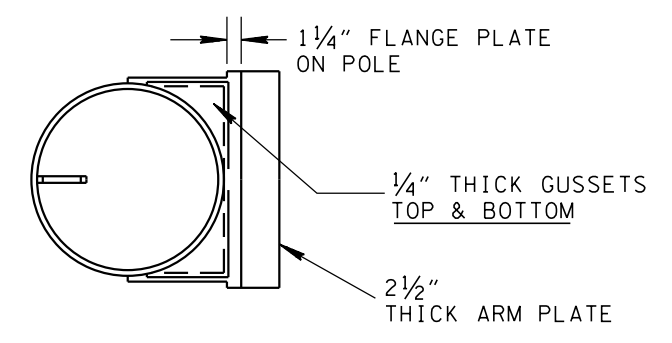
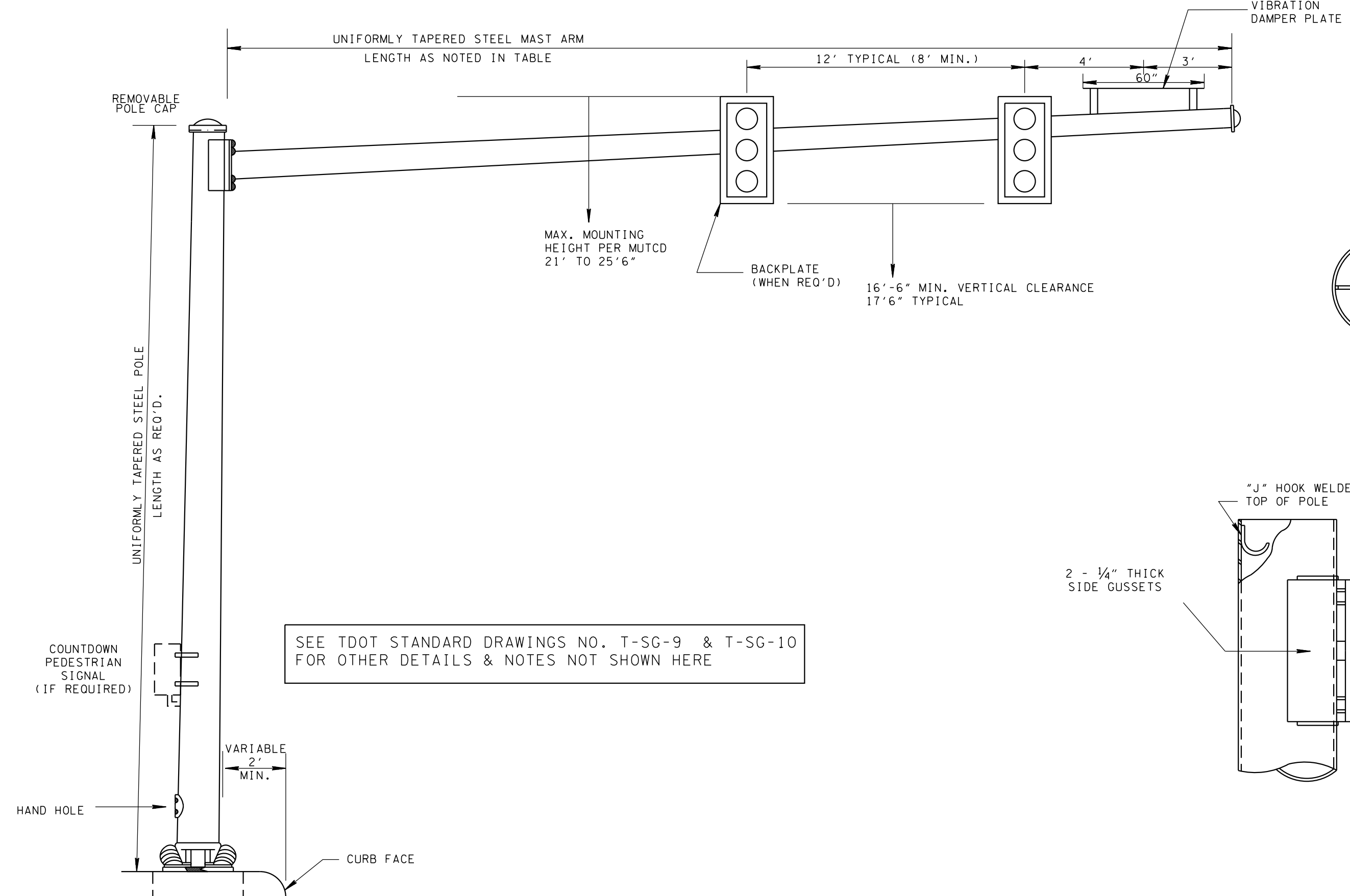


TYPE	YEAR	PROJECT NO.	SHEET NO.
PRELIM	2017	NS.13915.002	4



RIGID MOUNTING SIGNAL BRACKET

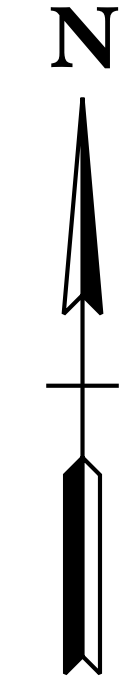
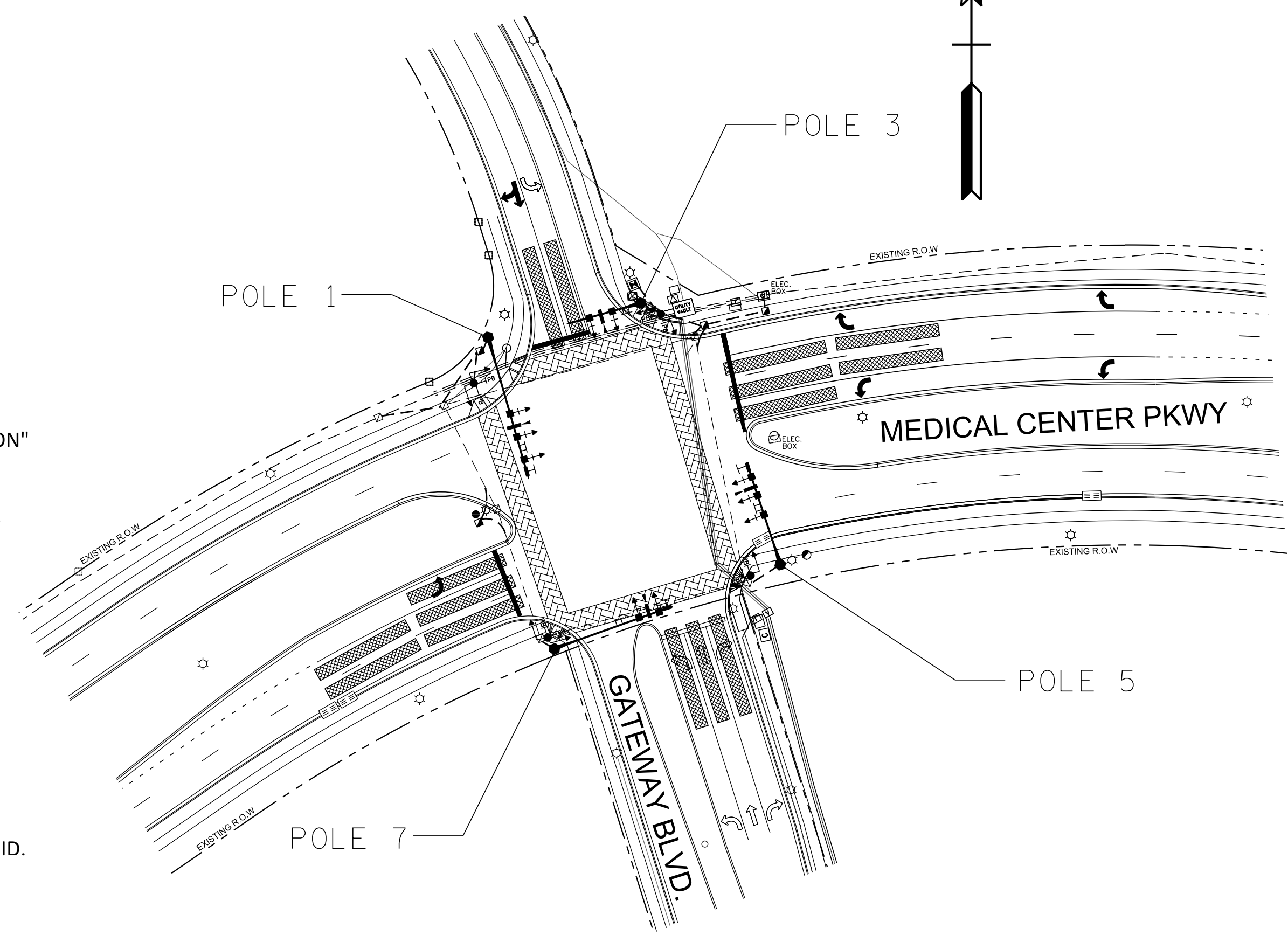
MAST ARM DETAIL TABLE

N. T. S.

POLE	S1	S2	S3	SH1	SH2	SH3	VID. CAM.
1 (70' ARM)	55'	66'		37'	49'	60'	44'
3 (35' ARM)	6'	30'		12'	24'		18'
5 (50' ARM)	28'	46'		24'	33'	43'	38'
7 (60' ARM)	33'	55'		42'	52'		48'

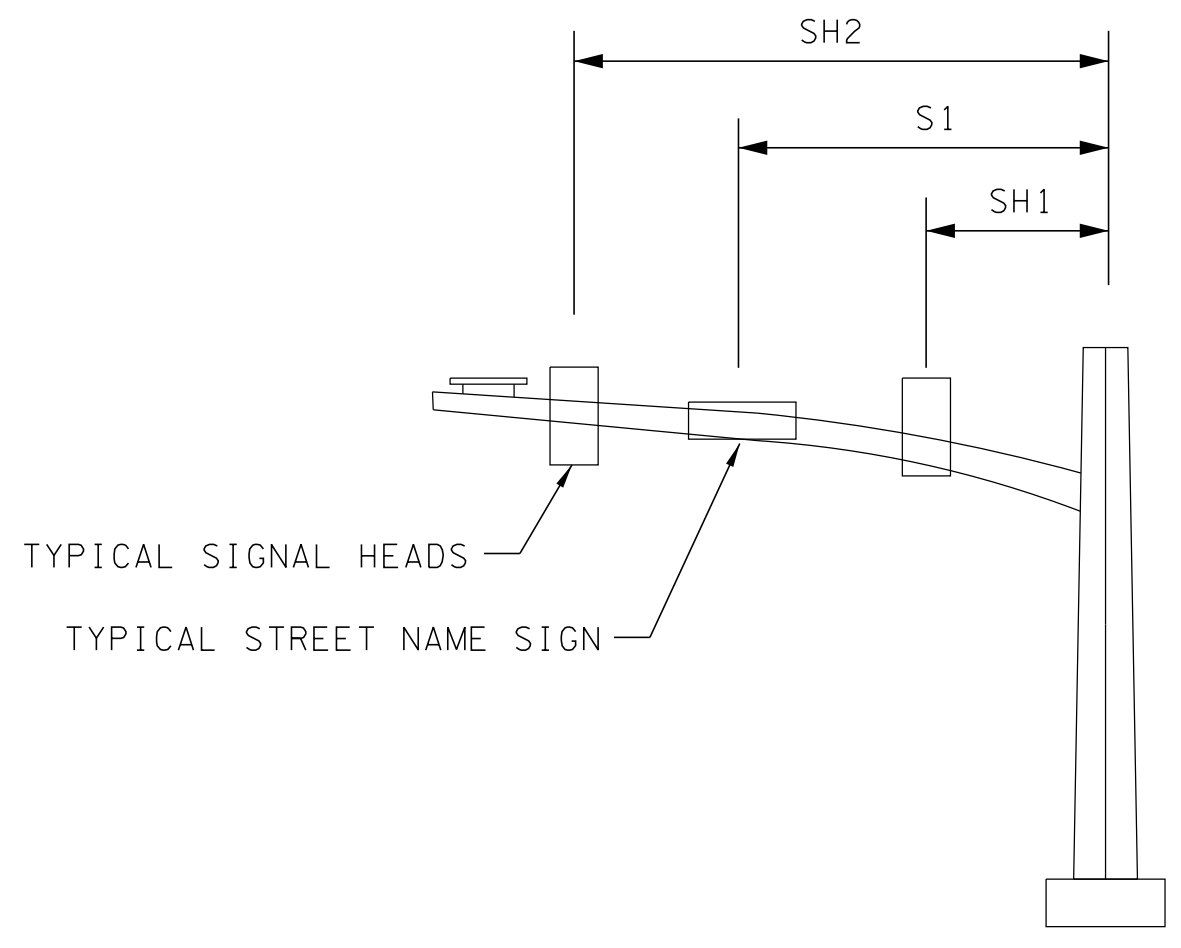
NOTE: ADDITIONAL SIGNS, S2, S3, ETC.
ADDITIONAL SIGNAL HEADS, SH3, SH4, ETC.

INTERSECTION LAYOUT



GENERAL NOTES

- 1) ALL POLES SHALL CONFORM TO "STANDARD SPECIFICATIONS FOR ROAD AND BRIDGE CONSTRUCTION" OF THE TENNESSEE DEPARTMENT OF TRANSPORTATION, SECTION 730 - TRAFFIC SIGNALS.
- 2) POLES SHALL BE DESIGNED ACCORDING TO AASHTO STANDARD SPECIFICATIONS FOR STRUCTURAL SUPPORTS FOR HIGHWAY SIGNS, LUMINARIES AND TRAFFIC SIGNALS (1994 EDITION)
- 3) THE VENDOR SHALL FURNISH POLES DESIGNED FOR A WIND VELOCITY OF 90 MPH.
- 4) ANCHOR BOLTS SHALL BE DESIGNED BY THE POLE FABRICATOR. THEY SHALL BE CAPABLE OF RESISTING THE FULL BENDING MOMENT OF THE SHAFT AT ITS YIELD STRENGTH OF STRESS.
- 5) CANTILEVER SIGNAL SUPPORTS SHALL BE DESIGNED BY THE POLE FABRICATOR
- 6) ARMS UP TO 50 FEET IN LENGTH TO BE SINGLE PIECE ASSEMBLY
- 7) POLES TO BE SHIPPED COMPLETE WITH ANCHOR BOLTS TEMPLATES AND ALL HARDWARE
- 8) SIGNAL HEADS TO BE RIGID MOUNTED. MOUNTING BRACKETS AND SIGNAL HEADS NOT PART OF BID.
- 9) POLE AND HARDWARE FINAL FINISH TO BE SEMI-GLOSS BLACK.
- 10) PROPOSED POLES TO MATCH EXISTING SIGNAL POLES AT ADJACENT INTERSECTIONS ALONG MEDICAL CENTER PARKWAY TO ALLOW FOR CONFORMITY OF SIGNAL POLES ALONG MEDICAL CENTER PARKWAY.



7/11/2017 1:23:49 PM N:\13915 - Murfreesboro OnCall\02 - MCPatGateway\dgn\04_Pole Detail Sheet.sht

SEALED BY

NEEL-SCHAFFER
Solutions you can build upon
201 E. MAIN STREET, SUITE 325
MURFREESBORO, TN 37130

CITY OF MURFREESBORO
TRANSPORTATION DEPARTMENT

DETAILS OF CANTILEVER SIGNAL SUPPORT

NO SCALE