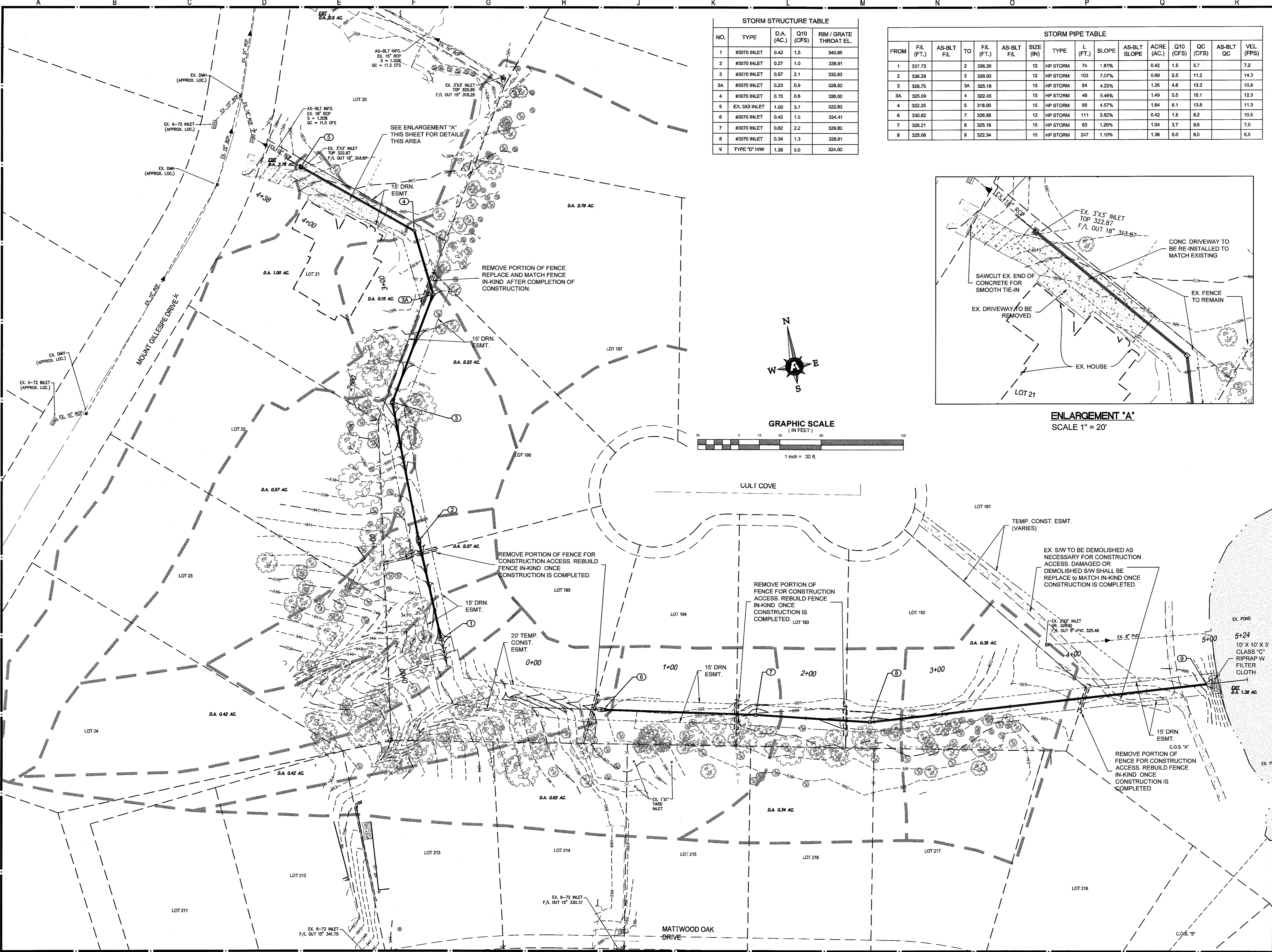


Copyright 2017 Fisher & Arnold, Inc. All rights reserved.  
 File Name: C:\Users\jgibson\OneDrive\Documents\101492001.dwg  
 Plot Date: Thursday, March 30, 2017 - 4:36 pm  
 Plot By: rshelton

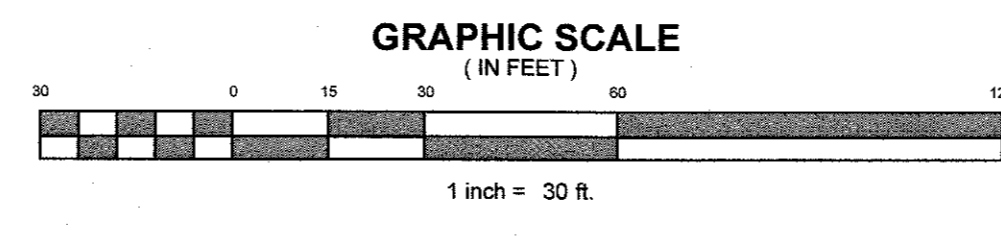
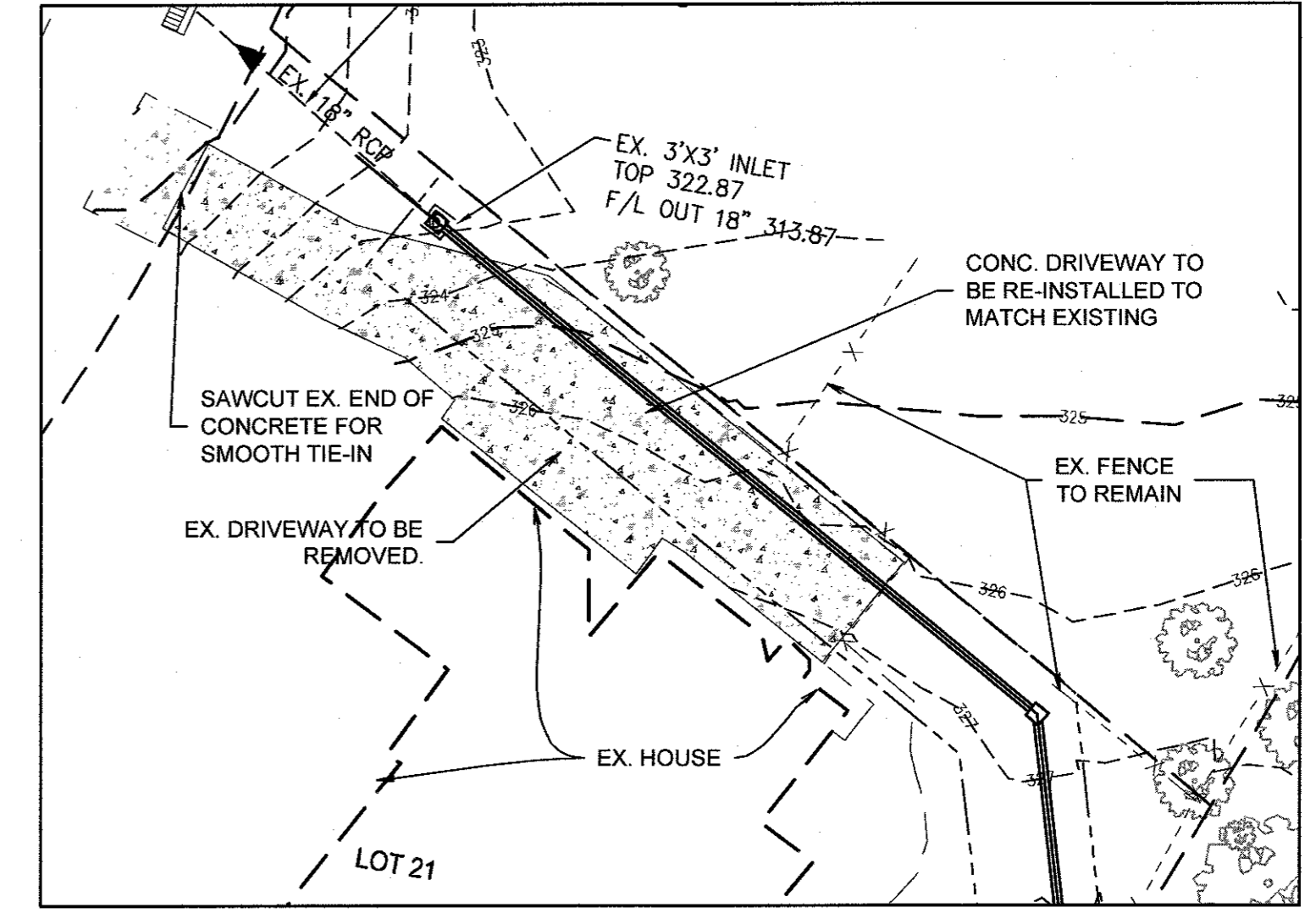


**STORM STRUCTURE TABLE**

NO.	TYPE	D.A. (AC.)	Q10 (CFS)	RIM / GRATE THROAT EL.
1	#3070 INLET	0.42	1.5	340.85
2	#3070 INLET	0.27	1.0	338.91
3	#3070 INLET	0.57	2.1	332.83
3A	#3070 INLET	0.23	0.9	328.50
4	#3070 INLET	0.15	0.6	328.00
5	EX. 3X3 INLET	1.00	3.7	322.83
6	#3070 INLET	0.42	1.5	334.41
7	#3070 INLET	0.82	2.2	329.80
8	#3070 INLET	0.34	1.3	328.81
9	TYPE "D" HW	1.38	5.0	324.00

**STORM PIPE TABLE**

FROM	F/L (FT.)	AS-BLT F/L	TO	F/L (FT.)	AS-BLT F/L	SIZE (IN)	TYPE	L (FT.)	SLOPE	AS-BLT SLOPE	ACRE (AC.)	Q10 (CFS)	QC (CFS)	AS-BLT QC	VEL. (FPS)
1	337.73		2	336.39		12	HP STORM	74	1.81%		0.42	1.5	5.7		7.2
2	336.29		3	329.00		12	HP STORM	103	7.07%		0.69	2.5	11.2		14.3
3	328.75		3A	325.19		15	HP STORM	84	4.22%		1.26	4.6	13.3		10.8
3A	325.09		4	322.45		15	HP STORM	48	5.46%		1.49	5.5	15.1		12.3
4	322.35		5	318.00		15	HP STORM	95	4.57%		1.64	8.1	13.8		11.3
6	330.82		7	326.56		12	HP STORM	111	3.82%		0.42	1.5	8.2		10.5
7	326.21		8	325.16		15	HP STORM	83	1.26%		1.04	3.7	8.6		7.0
8	325.06		9	322.34		15	HP STORM	247	1.10%		1.38	5.0	8.0		6.5



**FISHER ARNOLD**  
ENGINEERING INTEGRATION

9180 Crestwyn Hills Drive | Memphis, Tennessee 38125-8538  
901.748.1811 | Fax: 901.748.3115 | www.fisherarnold.com

---

**DRAINAGE IMPROVEMENTS  
OAKWOOD P.D.  
LAKELAND, TENNESSEE**

Rev.	Date	Revision Description

Issue Date: 02-20-17  
 Project No: B10149  
 Drawn By: SYN  
 Checked By: MDR  
 Sheet Title:  
**AREA A GRADING & DRAINAGE PLAN**

SHEET 1 OF 1