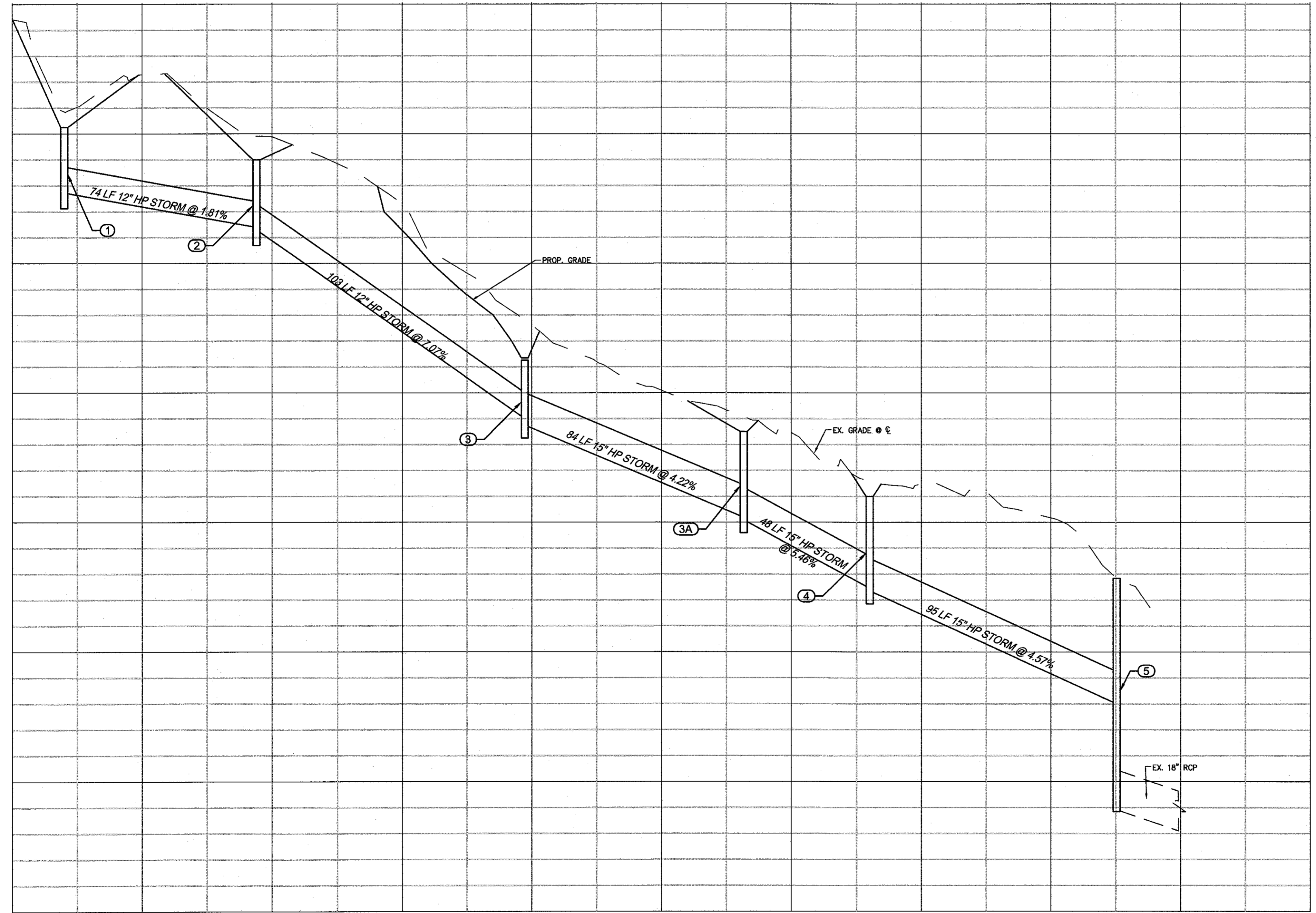


NO.	TYPE	D.A. (AC.)	Q10 (CFS)	RIM / GRATE THROAT EL.
1	#3070 INLET	0.42	1.5	340.85
2	#3070 INLET	0.27	1.0	339.91
3	#3070 INLET	0.57	2.1	332.83
3A	#3070 INLET	0.23	0.9	328.50
4	#3070 INLET	0.15	0.6	326.00
5	EX. 3X3 INLET	1.00	3.7	322.83

FROM	F/L (FT.)	AS-BLT F/L	TO	F/L (FT.)	AS-BLT F/L	SIZE (IN)	TYPE	L (FT.)	SLOPE	AS-BLT SLOPE	ACRE (AC.)	Q10 (CFS)	QC (CFS)	AS-BLT QC	VEL. (FPS)
1	337.73		2	336.39		12	HP STORM	74	1.81%		0.42	1.5	5.7		7.2
2	336.29		3	329.00		12	HP STORM	103	7.07%		0.89	2.5	11.2		14.3
3	328.75		3A	325.19		15	HP STORM	84	4.22%		1.26	4.6	13.3		10.8
3A	325.09		4	322.45		15	HP STORM	48	5.46%		1.49	5.5	15.1		12.3
4	322.35		5	318.00		15	HP STORM	95	4.57%		1.64	6.1	13.8		11.3

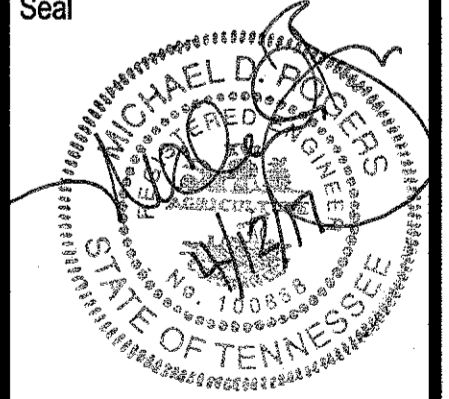


Copyright 2017 Fisher & Arnold, Inc. All rights reserved.
 File name: \\V10149\Servers\jglen\10149\B101.dwg
 Layout Name: DRN NORTH
 Plotted: Wednesday, April 12, 2017 - 11:54 am
 By: jglen

FISHER ARNOLD
 ENGINEERING INTEGRATION
 9180 Crestwyn Hills Drive | Memphis, Tennessee 38125-8538
 901.748.1811 | Fax: 901.748.3115 | www.fisherarnold.com
 © 2017 Fisher & Arnold, Inc. All rights reserved.

DRAINAGE IMPROVEMENTS
 OAKWOOD P.D.
 LAKELAND, TENNESSEE

Rev.	Date	Revision Description



Issue Date: 02-20-17
 Project No: B10149
 Drawn By: SYN
 Checked By: MDR
 Sheet Title:

AREA A PLAN &
 PROFILE (STORM
 STRUCTURE 1 TO 5)