

Exhibit B – Specifications, Scope of Work, and Services

Covina-Valley Unified School District is requesting bids for turnkey material procurement and installation of HVAC and HVAC Controls Repairs District-wide. The District intends to utilize AB-841 CalSHAPE Ventilation Contingency funding to execute this work; thus, all repair work must be executed by a “Skilled and Trained Workforce” as set forth in California Public Contract Code section 2601. The provider is required to pay prevailing hourly wages according to the California Division of Industrial Relations. Bidders shall include a minimum of 4 service professionals trained and certified to perform work on Carrier iVu control systems.

The specific scope of the HVAC and HVAC Controls Repairs are yet to be determined and will be based on CalSHAPE Assessment Reports performed outside of this contract. Bidders will be provided with an itemized list of deficiencies and will perform repair work at the District’s direction. Bidders shall be able to execute work in a timely manner during a combination of straight-time and shift-time, according to the District’s needs.

For the purposed of this bid, the following **hypothetical project scope of work** has been generated and is representative of the HVAC and HVAC Controls Repairs the bidder will be asked to execute. The hypothetical scope of work is as follows:

Hypothetical Project Scope of Work

The following 3 HVAC units are representative of the District’s HVAC units District-wide:

1. 4-ton Carrier Gas/Electric RTU, Model # 48TCLA05A2A6015785
2. 4-ton Bard Heat Pump Wall Pack, Model # W48HA-A04VP4
3. 4-ton Carrier Gas/Electric Split, Outdoor Condensing Unit Model # 24AAA648A300, Indoor Closet Furnace Model # GNPVT4821ALAAAAA

The following 13 repairs are representative of the repairs anticipated for the actual scope of this project:

1. Replace Belt
2. Replace Belt and Pulley
3. Tighten Belt and Adjust Pulley
4. Clean Evaporator Coil
5. Clean Condenser Coil
6. Replace Economizer Actuator Set
7. Clean and Lubricate Economizer Damper
8. Replace iVu Thermostat (ZS2P-CAR)
9. Replace iVu Controller
10. Recharge Refrigerant
11. Replace Entire Power Exhaust
12. Replace Blower Motor
13. Replace Compressor

For each of the 3 HVAC Unit types, bidders shall provide fully burdened all-in material, labor, and equipment pricing for each of the 13 repair types. Equipment unit costs should include truck charges, torch charges, etc. All RTUs can be assumed to be mounted on a single-story flat roof with no access constraints. All Wall Packs can be assumed to be mounted to portables with unconstrained ground-level access. All Split indoor units can be assumed to be closet furnaces and all Split outdoor units can be assumed to be ground-mounted with unconstrained access.

All work shall be priced to occur on straight time. All work shall be priced assuming it is grouped together by site, so as to combine and minimize fixed costs such as truck rolls, etc. All labor costs shall be priced to maintain a minimum 50:50 Journeyman to Apprentice labor split. Pricing shall fully include all administrative costs such as scheduling repairs, providing material and labor pricing details for each repair, and shall include **reporting back to the District weekly with status updates for all repairs.**

Bidders shall populate Exhibit A with their unit pricing for these hypothetical repairs for these typical HVAC units. These unit prices will be the basis for the award based on the following quantities of repairs by unit type:

Hypothetical Scope of Work Repair Quantities by Unit Type

Repair Type	RTU	Wall Pack	Split
Replace Belt	60	90	50
Replace Belt and Pulley	24	36	20
Tighten Belt and Adjust Pulley	24	36	20
Clean Evaporator Coil	36	54	30
Clean Condenser Coil	12	18	10
Replace Economizer Actuator Set	28	44	24
Clean and Lubricate Economizer Damper	20	28	16
Replace iVu Thermostat (ZS2P-CAR)	14	22	12
Replace iVu Controller	4	8	4
Recharge Refrigerant	8	10	6
Replace Entire Power Exhaust	4	4	4
Replace Blower Motor	2	2	2
Replace Compressor	2	2	2

Actual Provider Unit Costs

Additionally, **bidders shall provide actual hourly labor rates (straight, shift, and over time) for all labor categories that will be performing HVAC and HVAC controls repairs.** Bidders shall populate Exhibit A with actual unit cost pricing for non-labor items (truck roll charge, torch charge, etc.) and all labor categories that will be performing repair work. Bidders shall add all relevant labor categories and non-labor items with straight, shift, and over time unit costs to Exhibit A. These actual unit costs will be used to price the actual repair implementation scope once those repairs have been identified. These actual unit costs must be the same unit costs used to price the hypothetical project scope above.

Scope of Work Summary

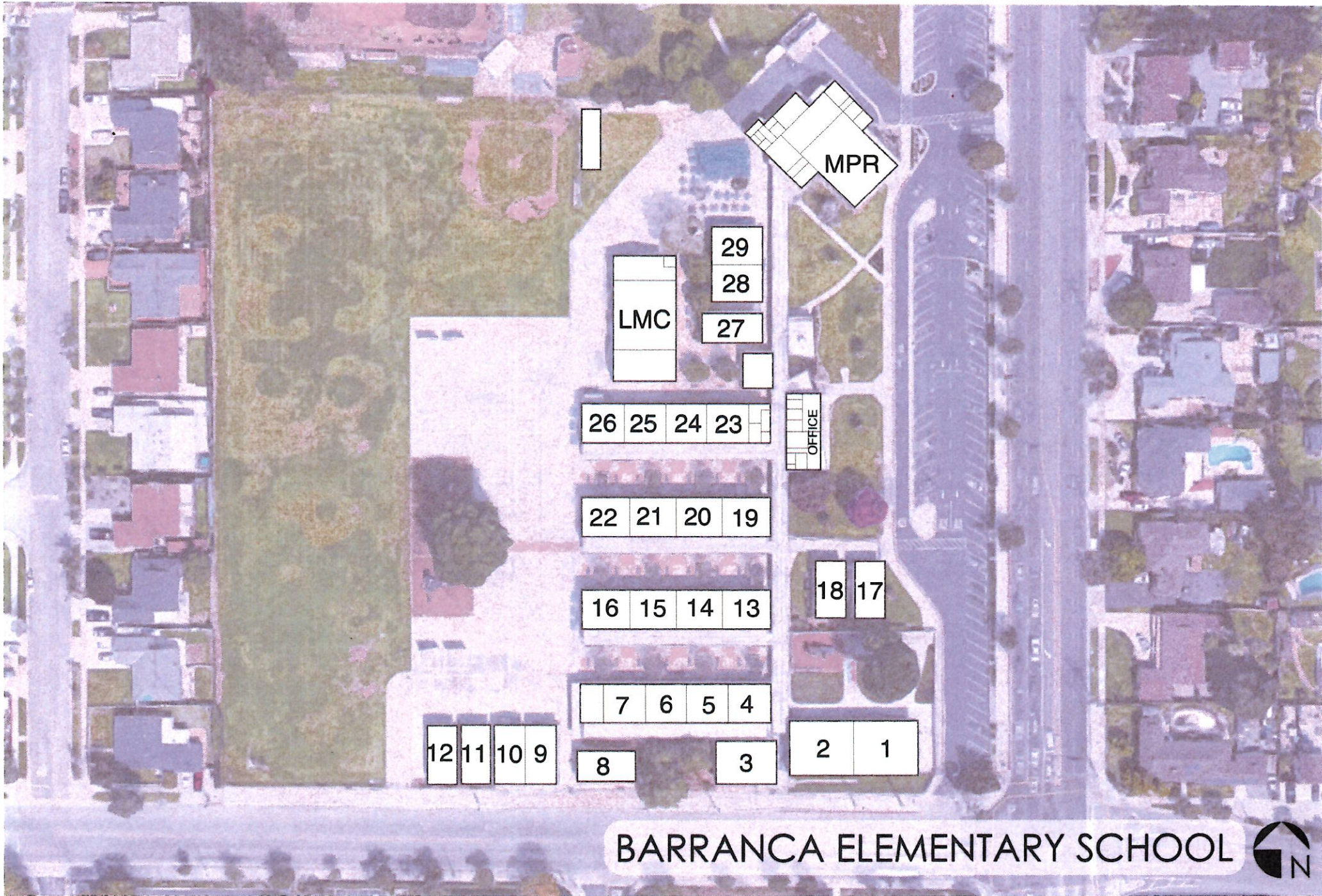
Site	Scope Phase	HVAC Repair Maximum Scope Budget
Barranca ES	Phase 1	\$14,705.00
Cypress ES	Phase 1	\$17,440.00
Fairvalley HS	Phase 1	\$12,560.00
Merwin ES	Phase 1	\$15,445.00
Ben Lomond ES	Phase 1	\$14,830.00
Workman ES	Phase 1	\$15,370.00
Las Palmas MS	Phase 1	\$23,310.00
Traweek MS	Phase 1	\$21,505.00
Sierra Vista MS	Phase 1	\$23,260.00
Northview HS	Phase 1	\$32,700.00
Phase 1 Subtotal		\$191,125.00
Covina HS	Phase 2	\$35,295.00
South Hills HS	Phase 2	\$39,150.00
Manzanita ES	Phase 2	\$15,410.00
Mesa ES	Phase 2	\$17,970.00
Grovecenter ES	Phase 2	\$14,900.00
Rowland ES	Phase 2	\$16,125.00
Phase 2 Subtotal		\$138,850.00
Total		\$329,975.00

The above table summarizes the scope of sites included in this repair project along with the maximum repair scope budget by site. All repair work will be directed by the District up to the maximum repair scope budget. The District may fully utilize or partially utilize the maximum repair scope budget at their sole discretion. Bidders shall be expected to respond to repair requests and complete repairs within 7 calendar days of notice from the District, with the exception of repairs requiring specialty parts with longer lead times.

The scope has been broken out into two Phases. **Phase 1 shall be completed first**, followed by Phase 2. It is anticipated that the Phase 1 itemized list of repairs will be delivered to the provider no later than **August 1. The provider shall fully execute all Phase 1 repairs totaling up to \$191,125 no later than September 30, 2023.**

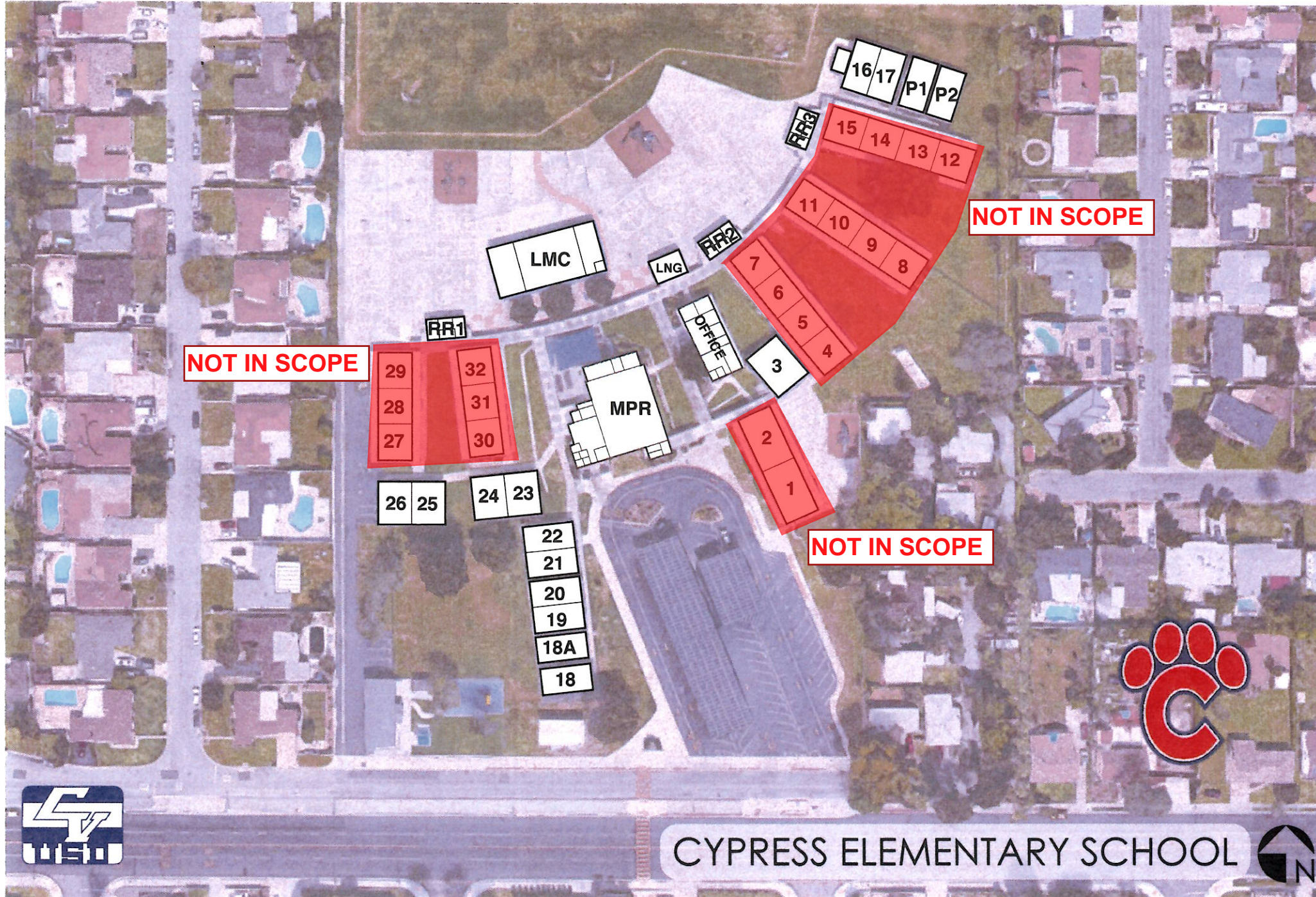
It is anticipated that the Phase 2 itemized list of repairs will be delivered to the provider no later than **September 1. The provider shall fully execute all Phase 2 repairs totaling up to \$138,850 no later than November 30, 2023.**

Site maps for each location are provided at the end of this document for reference. Note that some classrooms across 5 schools are **not in scope**, as indicated in the site maps. The data provided is assumed to be accurate and complete.



BARRANCA ELEMENTARY SCHOOL





NOT IN SCOPE

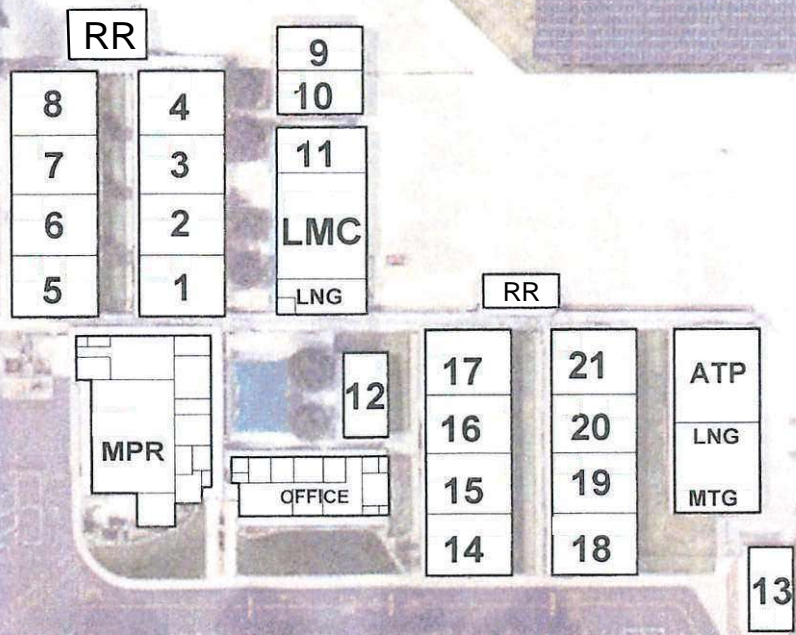
NOT IN SCOPE

NOT IN SCOPE



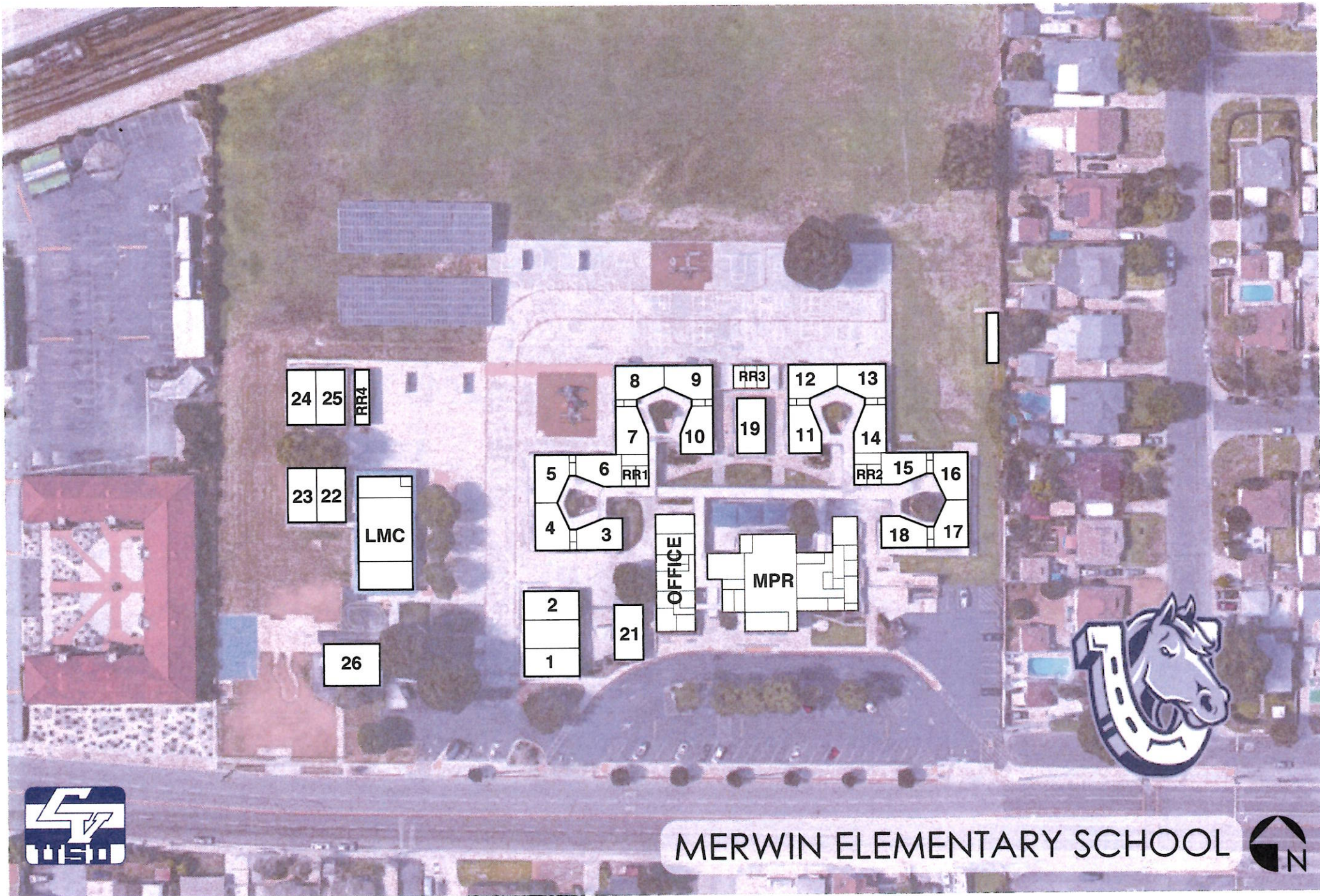
CYPRESS ELEMENTARY SCHOOL





FAIRVALLEY HIGH SCHOOL & ADULT TRANSITION PROGRAM





24 25

RR4

23 22

LMC

26

8 9
7 10
5 6
4 3

RR1

2
1

21

OFFICE

MPR

RR3

19

12 13
11 14

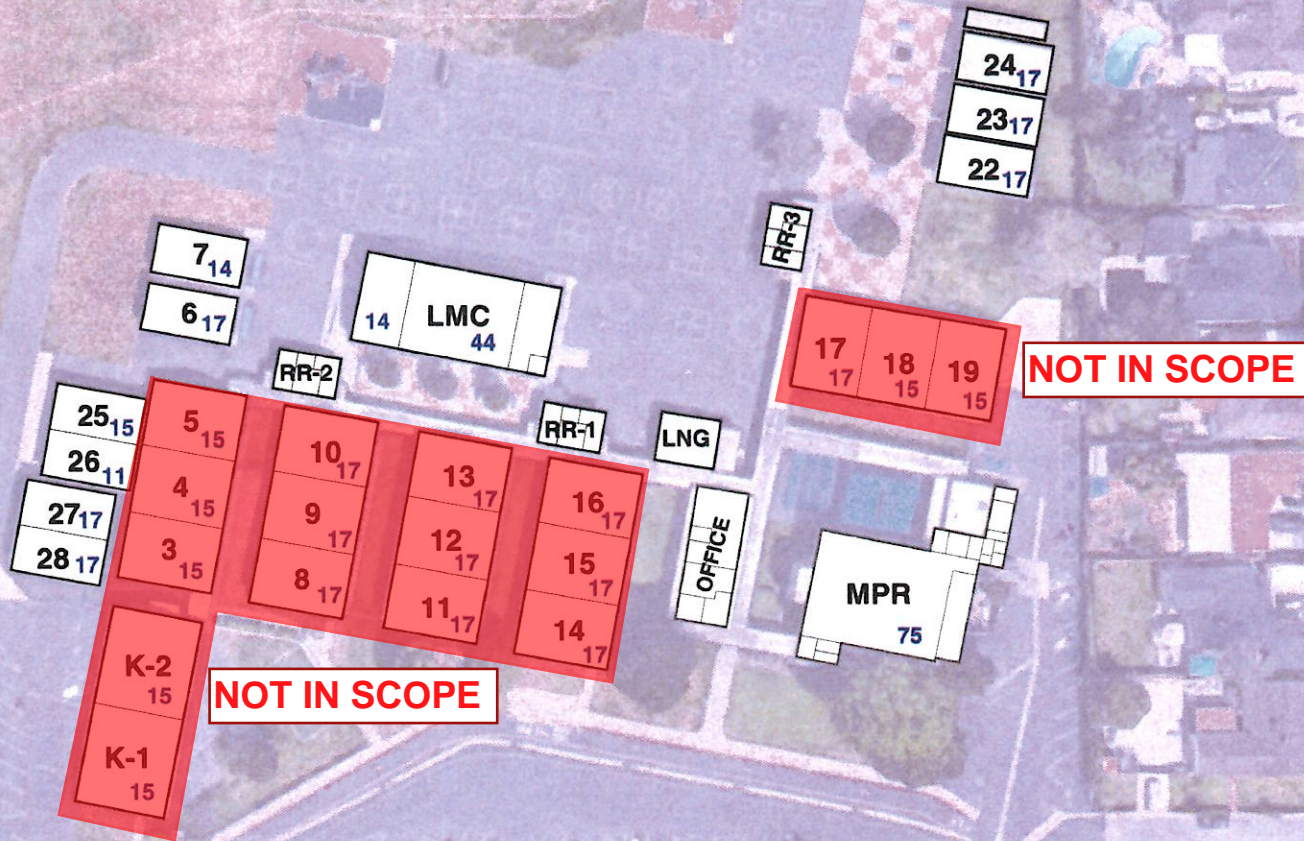
RR2 15 16
18 17



MERWIN ELEMENTARY SCHOOL



COVID MAX OCCUPANCY



BEN LOMOND ELEMENTARY SCHOOL





NOT IN SCOPE

3

7 8

LMC

RR2

LNG

RR1

2	6	11	14	17
1	5	10	13	16
	4	9	12	15

28 29 30 31

RR3

23	22	21
20	19	18

NOT IN SCOPE

26
27

24
25

MPR

OFFICE



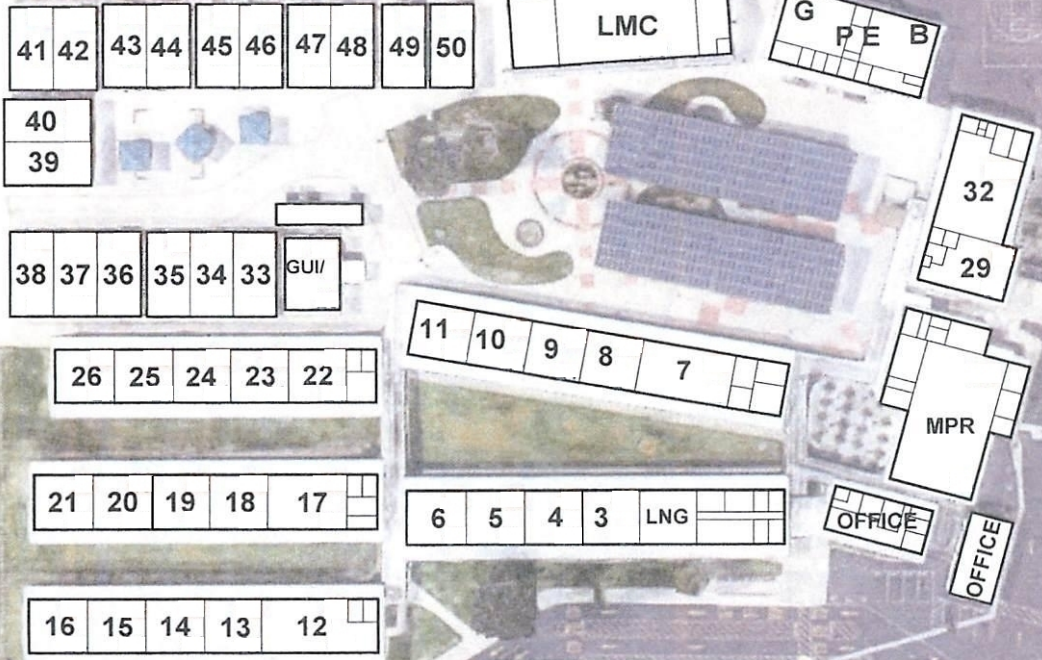
WORKMAN ELEMENTARY SCHOOL





LAS PALMAS MIDDLE SCHOOL

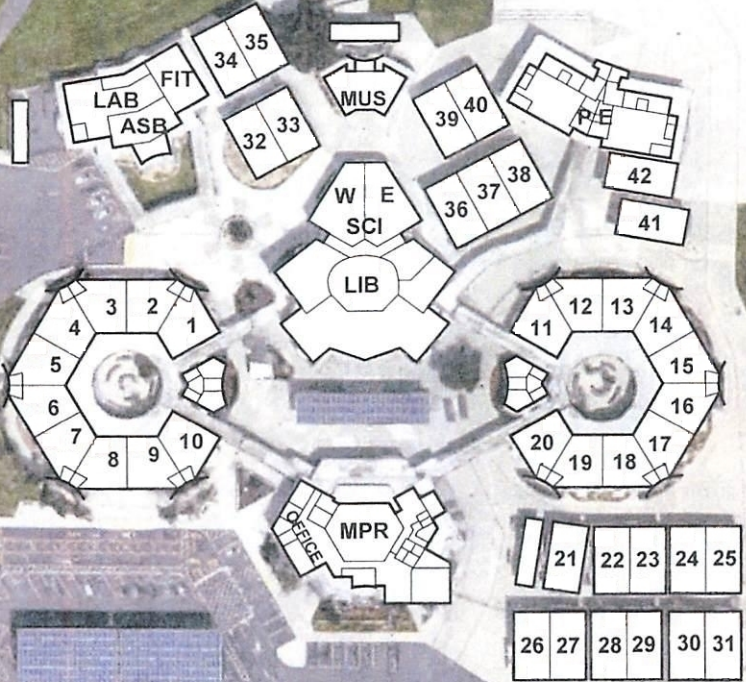




TRAWEEK MIDDLE SCHOOL

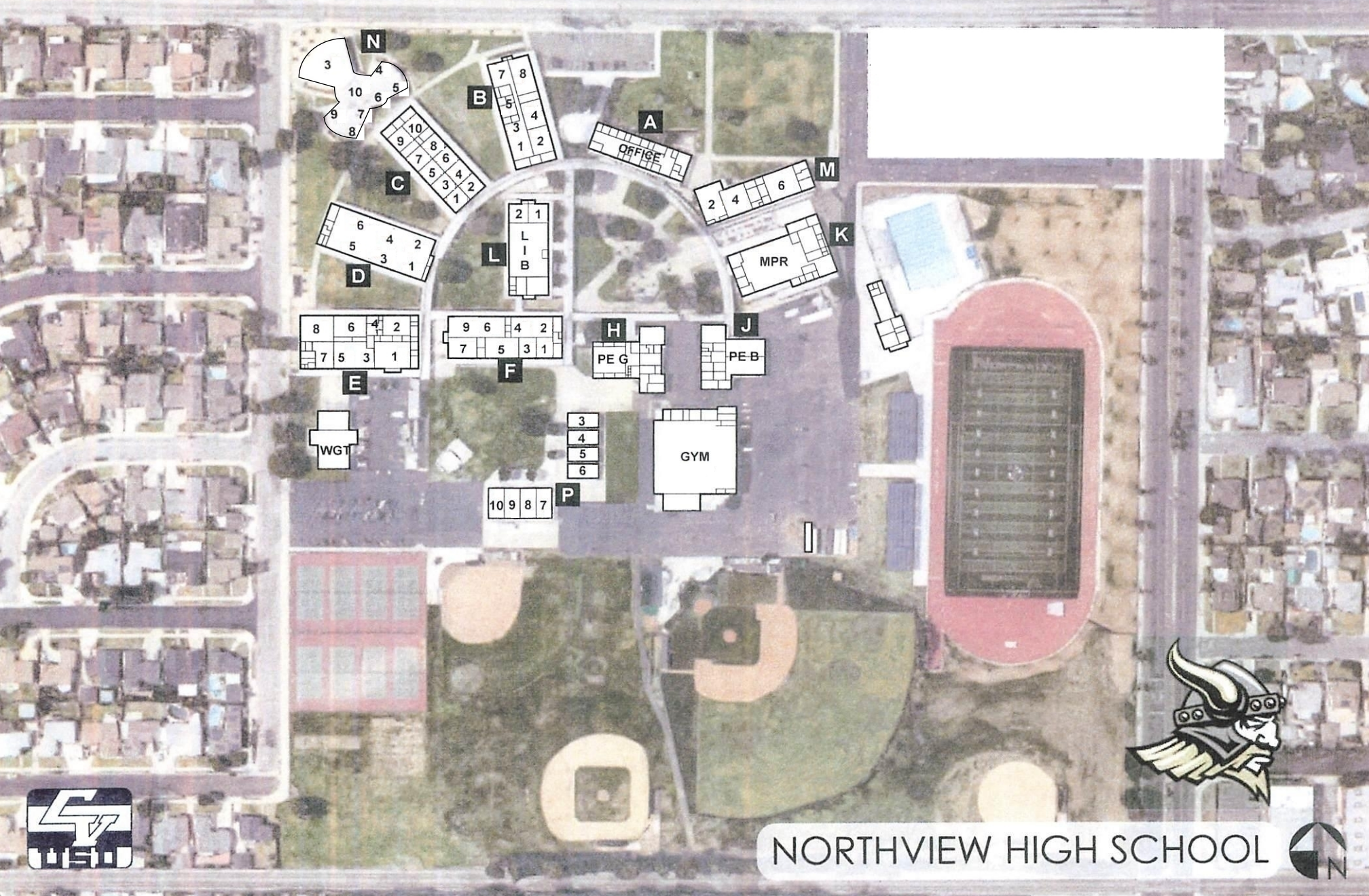


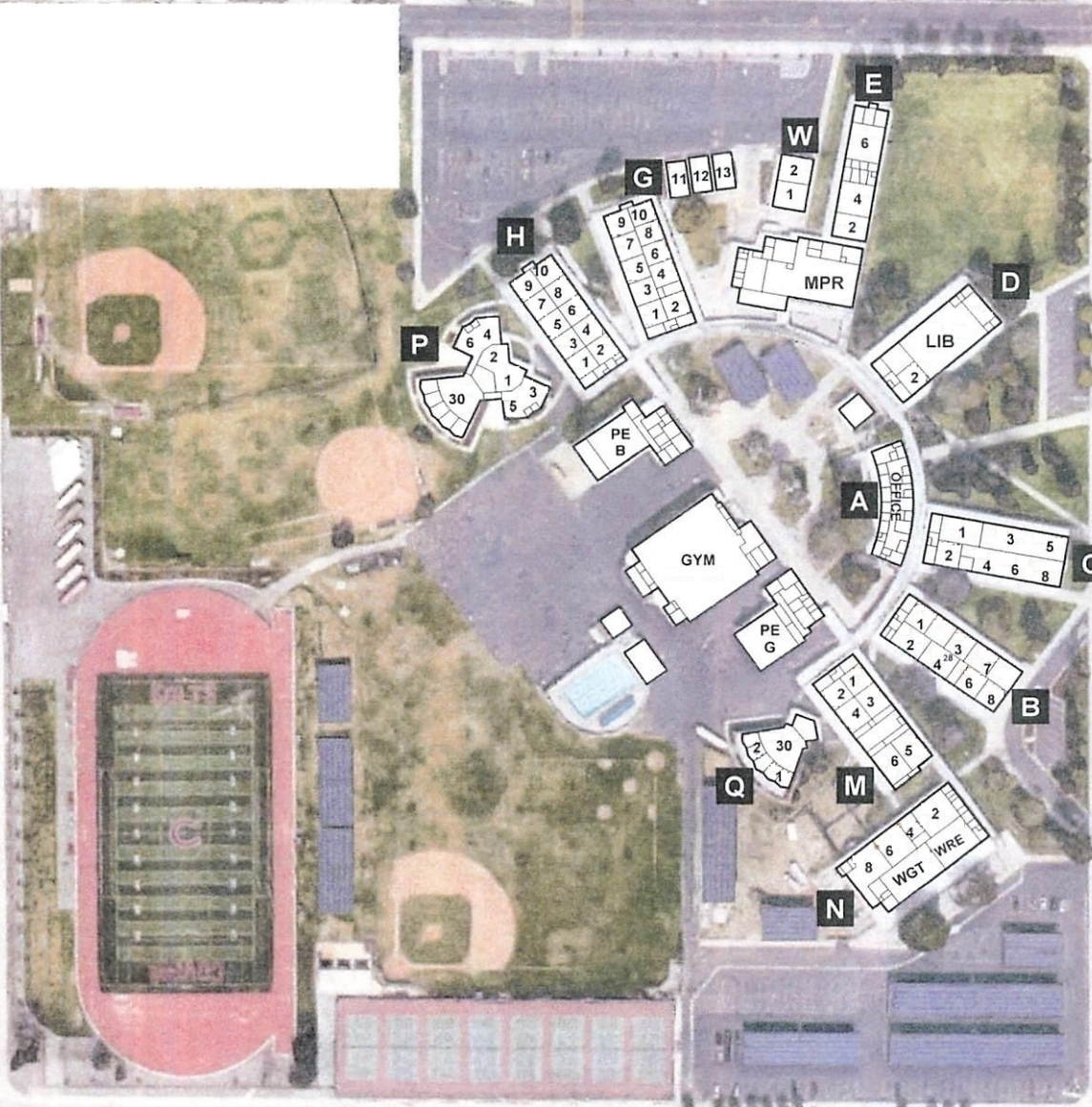
53 52 51 50 49 48



SIERRA VISTA MIDDLE SCHOOL

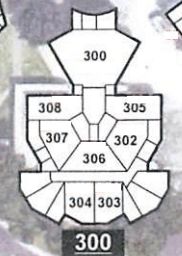
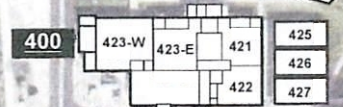
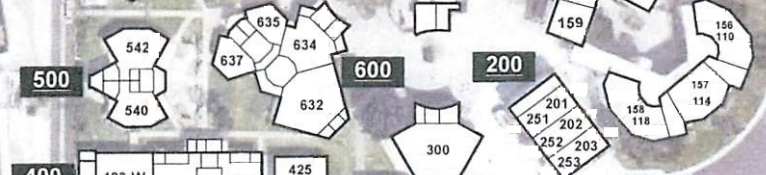
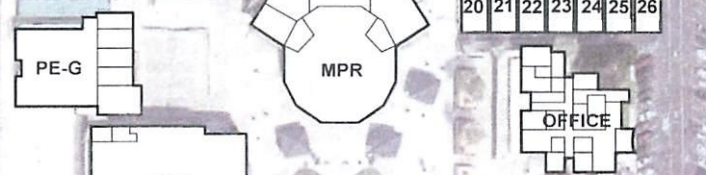
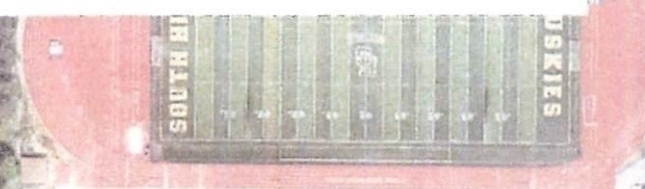
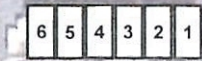
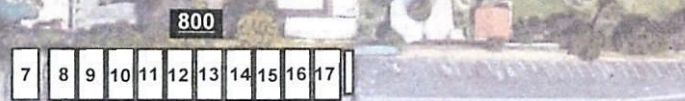






COVINA HIGH SCHOOL





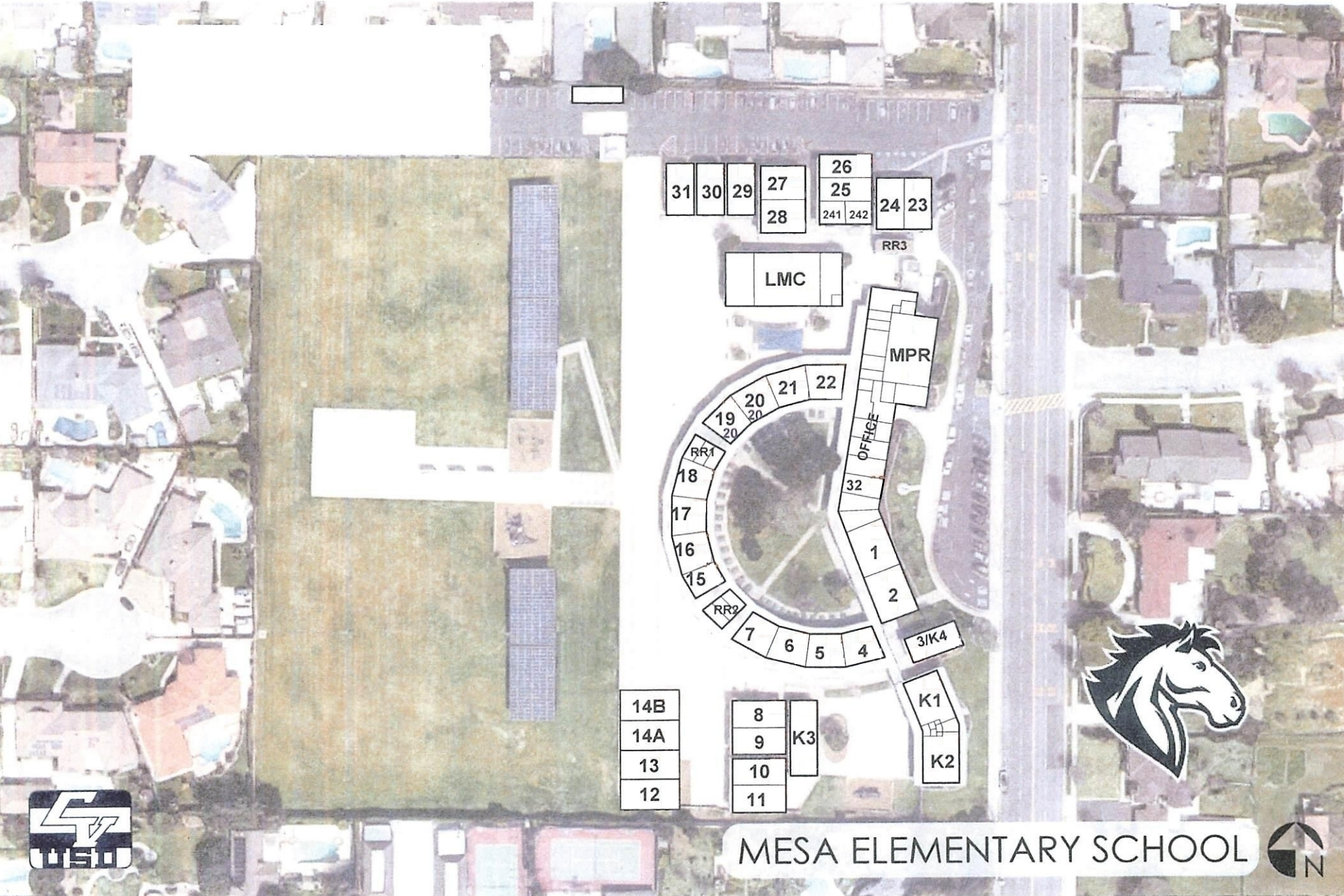
SOUTH HILLS HIGH SCHOOL





MANZANITA ELEMENTARY SCHOOL





31	30	29	27	26	24	23
			28	25	241	242

LMC

RR3

MPR

21 22
19 20
18 RR1
17
16
15 RR2
7 6 5 4

OFFICE

32

1

2

3IK4

K1

K2

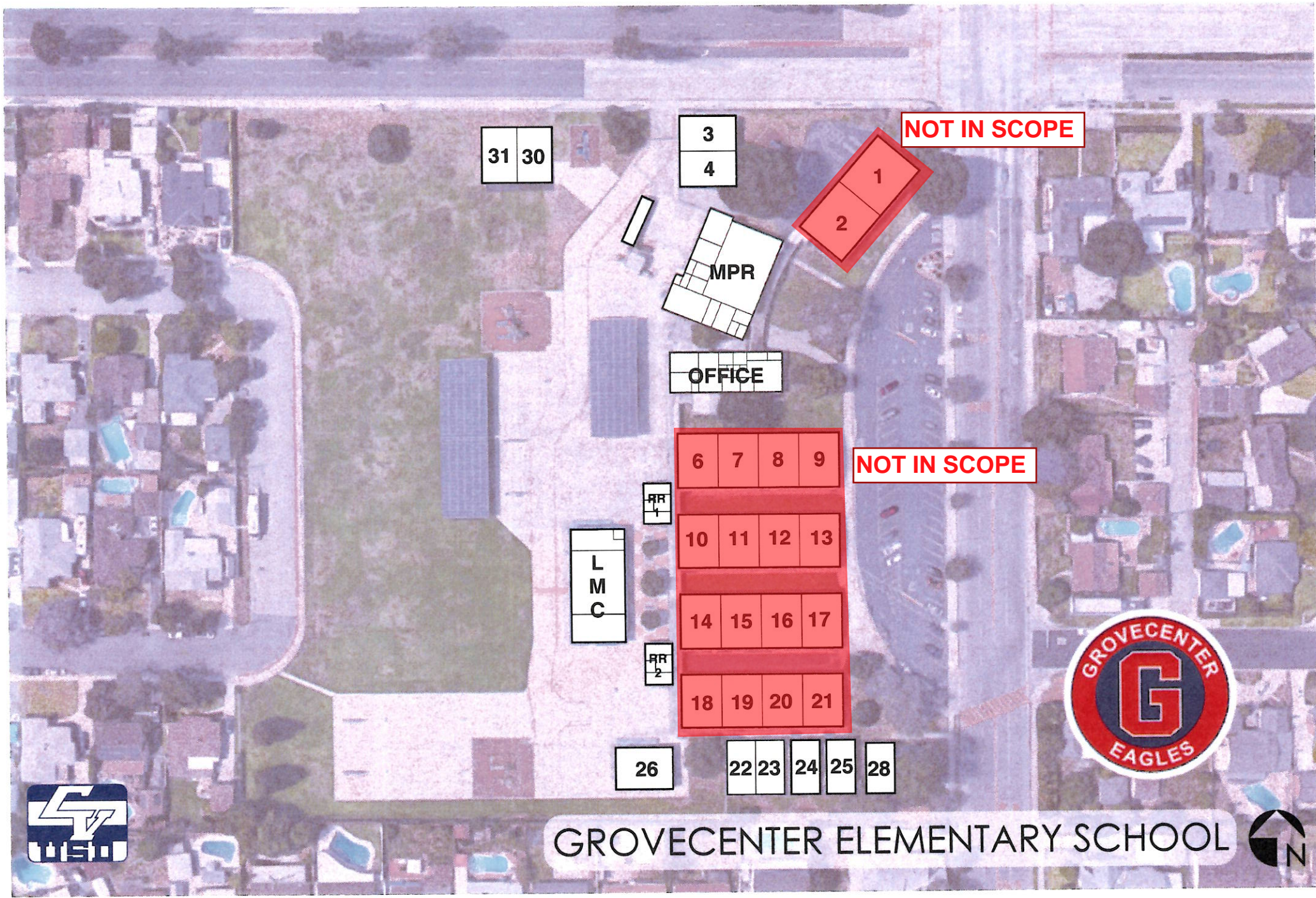
14B
14A
13
12

8	K3
9	
10	
11	



MESA ELEMENTARY SCHOOL





31 30

3
4

NOT IN SCOPE

1
2

MPR

OFFICE

6 7 8 9

NOT IN SCOPE

L
M
C

RR
1

10 11 12 13

14 15 16 17

RR
2

18 19 20 21

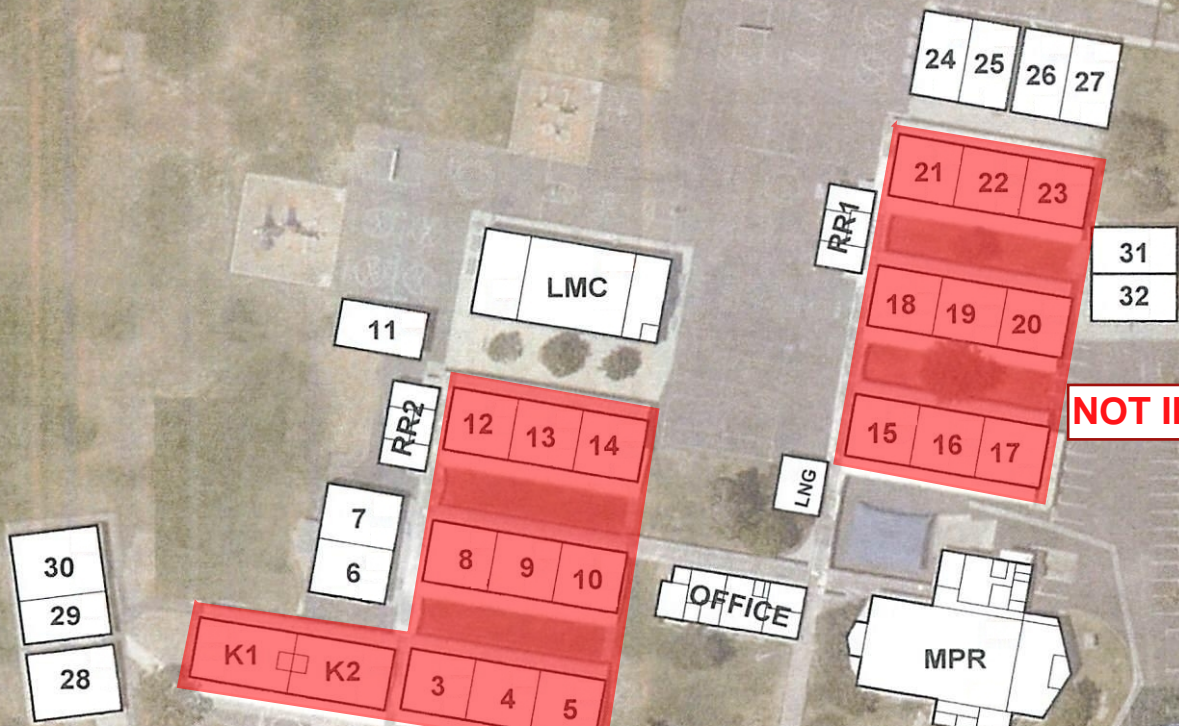
26

22 23 24 25 28



GROVECENTER ELEMENTARY SCHOOL





NOT IN SCOPE

NOT IN SCOPE



ROWLAND AVENUE ELEMENTARY SCHOOL

