

BLUE COLLAR DESTINATIONS

BLUE COLLAR COUNTRY-CHAMPIONSHIP FIELD

FOLEY, ALABAMA

<i>SHEET TITLE</i>	<i>SHEET NUMBER</i>
SECTION VIEWS	1
SECTION VIEWS @ VIEWING PLATFORM	2
SIGHT LINES	3
SEATING LAYOUT	4
FOOTING & UNDER STRUCTURE LAYOUT	5
LOAD CHARTS & TOP OF PIER DETAILS	6
ROW "A" 1-11 & ROW "B" 1-7 & 10-11 PIER DETAILS	6A
ELEVATION VIEWS	7
EXIT DETAILS	8
GENERAL DETAILS	9



GENERAL NOTES & SITE CONDITIONS

1. ALL DIMENSION PERTAINING TO GRANDSTAND AND SITE CONDITIONS/OBJECTS TO BE FIELD VERIFIED OR LOCATED PRIOR TO FABRICATION BY OWNER OR OWNERS REP.

2. AS SPECIFIED AND ILLUSTRATED, ALL ALUMINUM FOOTBOARDS AND WALKING SURFACES ARE MILL FINISH. MILL FINISH ALUMINUM, WHEN EXPOSED TO THE ATMOSPHERE, FORMS A TRANSPARENT, PROTECTIVE OXIDE COATING. MILL FINISH ALUMINUM WILL STAIN WHEN MOISTURE IS TRAPPED AGAINST IT. THIS MOISTURE ENTRAPMENT CAN OCCUR AT SEVERAL STAGES OF MATERIAL DELIVERY, INCLUDING PACKAGING, SHIPPING AND STORAGE. THESE STAINS CAN BE ERRATIC AND VARY IN COLOR FROM LIGHT BRONZE TO BLACK TO CHALKY WHITE. MOISTURE STAINS HAVE NO EFFECT ON THE STRENGTH OF THE MATERIAL. THESE STAINS BECOME LESS NOTICEABLE DURING NORMAL USAGE AND EXPOSURE TO THE SUN'S RADIATION.

DESIGN LOADING

TREAD & SEAT AREA 100psf UNIFORM LIVE LOAD.
SEAT (VERTICAL) 120 lbs/lf.
SEAT (HORIZONTAL SWAY) 24lbs/lf PARALLEL AND 10lbs/lf PERPENDICULAR TO SEAT.

HANDRAIL & GUARDRAIL 50 lbs/lf IN ANY DIRECTION.
HANDRAIL & GUARDRAIL 200 lbs CONCENTRATED IN ANY DIRECTION.
SNOW LOADS AS PER STATE ADOPTED CODE
WIND LOADS AS PER STATE ADOPTED CODE
SEISMIC LOADS AS PER STATE ADOPTED CODE



PO Box One, Graham, Texas 76450

801 Fifth Street.

Phone: 940/549-0733 Fax: 940/549-1365

Established 1946

NOTES

- 1 STRUCTURAL SHAPES MEET ONE OF THE FOLLOWING ASTM SPECIFICATIONS: A36, A36/A572 GRADE 50, A572 GRADE 50, A529-50, OR A500 GRADE B.
- 2 WELDS ARE ALL AROUND WITH TYPE ER70S-6 WIRE MIG.
- 3 ALL STEEL TO BE HOT DIPPED GALVANIZED TO A.S.T.M. A-123-89 ee1.
- 4 STRUCTURAL BOLTS ARE HOT DIPPED GALV. AND ARE EQUAL TO OR GREATER THAN A-307.
- 5 NO CONNECTIONS UTILIZING HIGH STRENGTH BOLTS ARE CLASSIFIED AS SLIP CRITICAL.
- 6 ANODIZED ALUMINUM RAIL IS 1 1/4" NOMINAL PIPE SIZE. (1 5/8" O.D.)
- 7 SOUTHERN BLEACHER COMPANY AS A MANUFACTURER AND INSTALLER OF GRANDSTAND SEATING IS NOT AUTHORIZED TO CERTIFY PLANS AS ADA COMPLIANT. HOWEVER, TO THE BEST OF OUR KNOWLEDGE THESE PLANS MEET OR EXCEED ADA REQUIREMENTS FOR QUANTITY OF ADA SEATING, ACCESS/EGRESS TO ADA SEATING, & DISPERSAL OF ADA SEATING.
- 8 ALL FIELD CONNECTIONS ARE NON-SLIP CRITICAL U.N.O. ALL CONNECTIONS ARE DESIGNED TO UTILIZE A307 BOLTS, IT IS ACCEPTABLE TO USE A325N BOLTS IN LIEU OF THE A307 BOLTS. THE INSTALLATION OF THESE BOLTS ARE TO BE TIGHTENED A SNUG TIGHT CONDITION AS SPECIFIED BY AISC.
- 9 STRUCTURE IS SHOP WELDED, FIELD BOLTED.

OWNER/REPRESENTATIVE/ARCHITECTURAL REVIEW
PLEASE REVIEW THE DRAWINGS FOR COMPLIANCE WITH YOUR ORDER. PLEASE INDICATE ANY CHANGES OR COMMENTS ON THE DRAWINGS.

<input type="checkbox"/> APPROVED	_____
	SIGNATURE
<input type="checkbox"/> APPROVED AS NOTED	_____
	TITLE
<input type="checkbox"/> REVISE AND RE-SUBMIT	_____
	DATE

REVISION 1 CJF 7/24/15

GENERAL INFORMATION	
RISE:	12
TREAD:	24
ROWS:	17
LENGTH:	128'-6"
SEAT COUNT:	1149 + 12 W/C

DATE: 6/16/15
JOB #15174
BLUE COLLAR DESTINATIONS
BLUE COLLAR COUNTRY
CHAMPIONSHIP FIELD
FOLEY, ALABAMA

ITEM DESCRIPTION

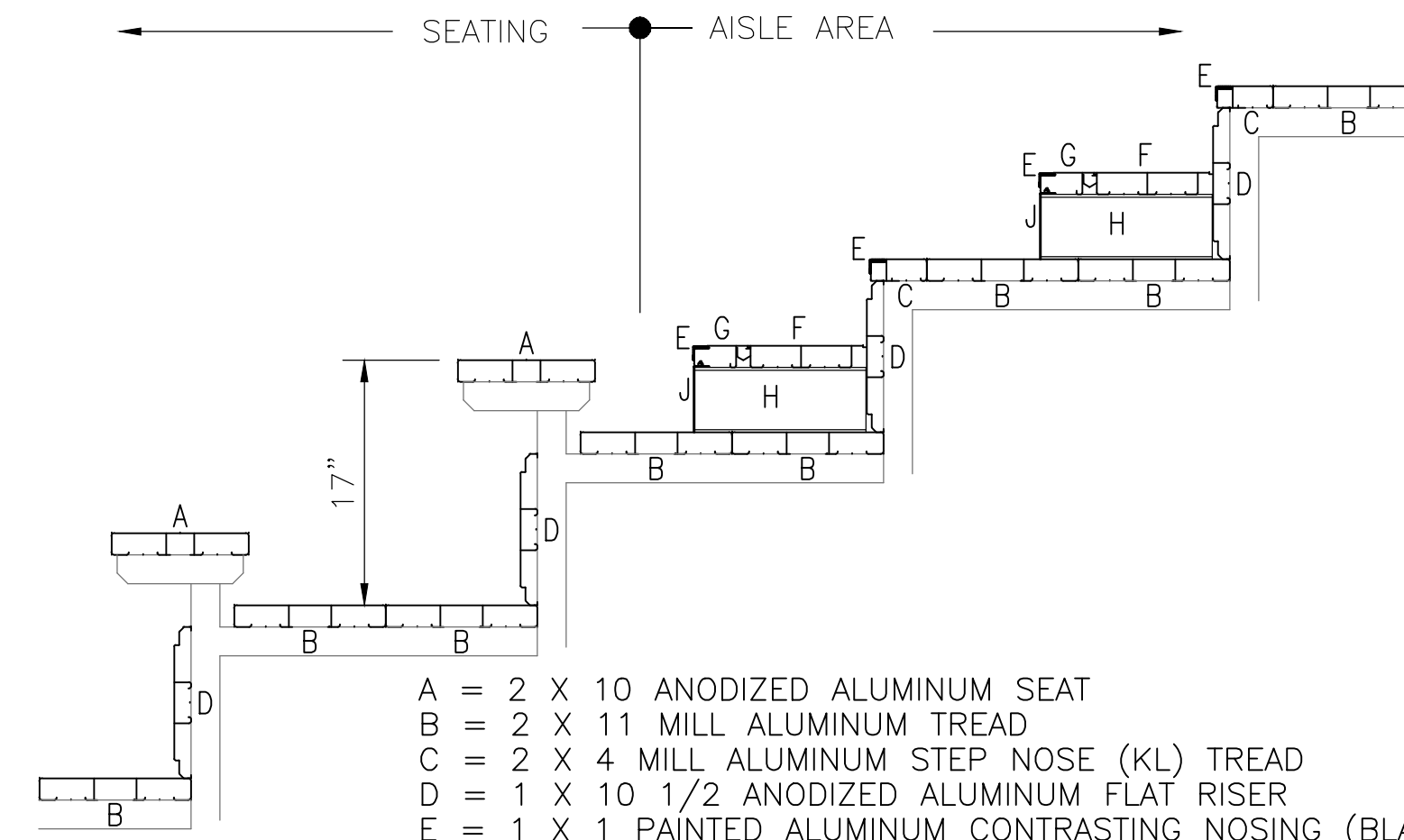
- ① W 14 X 34 (50 ksi)
- ② W 14 X 22 (50 ksi)
- ③ W 10 X 12 (50 ksi)
- ④ W 8 X 28 (50 ksi)
- ⑤ W 8 X 24 (50 ksi)
- ⑥ W 6 X 15 (50 ksi)
- ⑦ W 6 X 9 (50 ksi)
- ⑧ L 3 X 3 X 1/4 (50 ksi)
- ⑨ L 2 X 2 X 3/16 (50 ksi)
- ⑩ L 2 X 1 1/2 X 3/16 (50 ksi)
- ⑪ L 1 1/2 X 1 1/2 X 3/16 (50 ksi)
- ⑫ 12 X 12 X 5/8 PLATE
- ⑬ 8 X 8 X 3/8 PLATE
- ⑭ 6 X 8 X 3/8 PLATE
- ⑮ 3/4 X REQ'D LENGTH SWAY ROD (50 ksi)
- ⑯ 3/4 X 18 ANCHOR BOLT W/2 HEX HEAD NUTS & FLAT WASHER
- ⑰ 9 GAUGE CHAINLINK FENCE
- ⑱ ANODIZED ALUMINUM RAIL (SEE NOTES)
- ⑲ 3 X 3/8 GUSSET PLATE (A36)
- ⑳ 2 X 1/4 GUSSET PLATE (A36)
- ㉑ 7/8 X 21 ANCHOR BOLT W/2 HEX HEAD NUTS & FLAT WASHER

DESIGN LOADING

TREAD & SEAT AREA 100psf UNIFORM LIVE LOAD.
 SEAT (VERTICAL) 120 lbs/lf.
 SEAT (HORIZONTAL SWAY) 24lbs/lf PARALLEL AND 10lbs/lf PERPENDICULAR TO SEAT.
 HANDRAIL & GUARDRAIL 50 lbs/lf IN ANY DIRECTION.
 HANDRAIL & GUARDRAIL 200 lbs CONCENTRATED IN ANY DIRECTION.
 SNOW LOADS AS PER STATE ADOPTED CODE
 WIND LOADS AS PER STATE ADOPTED CODE
 SEISMIC LOADS AS PER STATE ADOPTED CODE

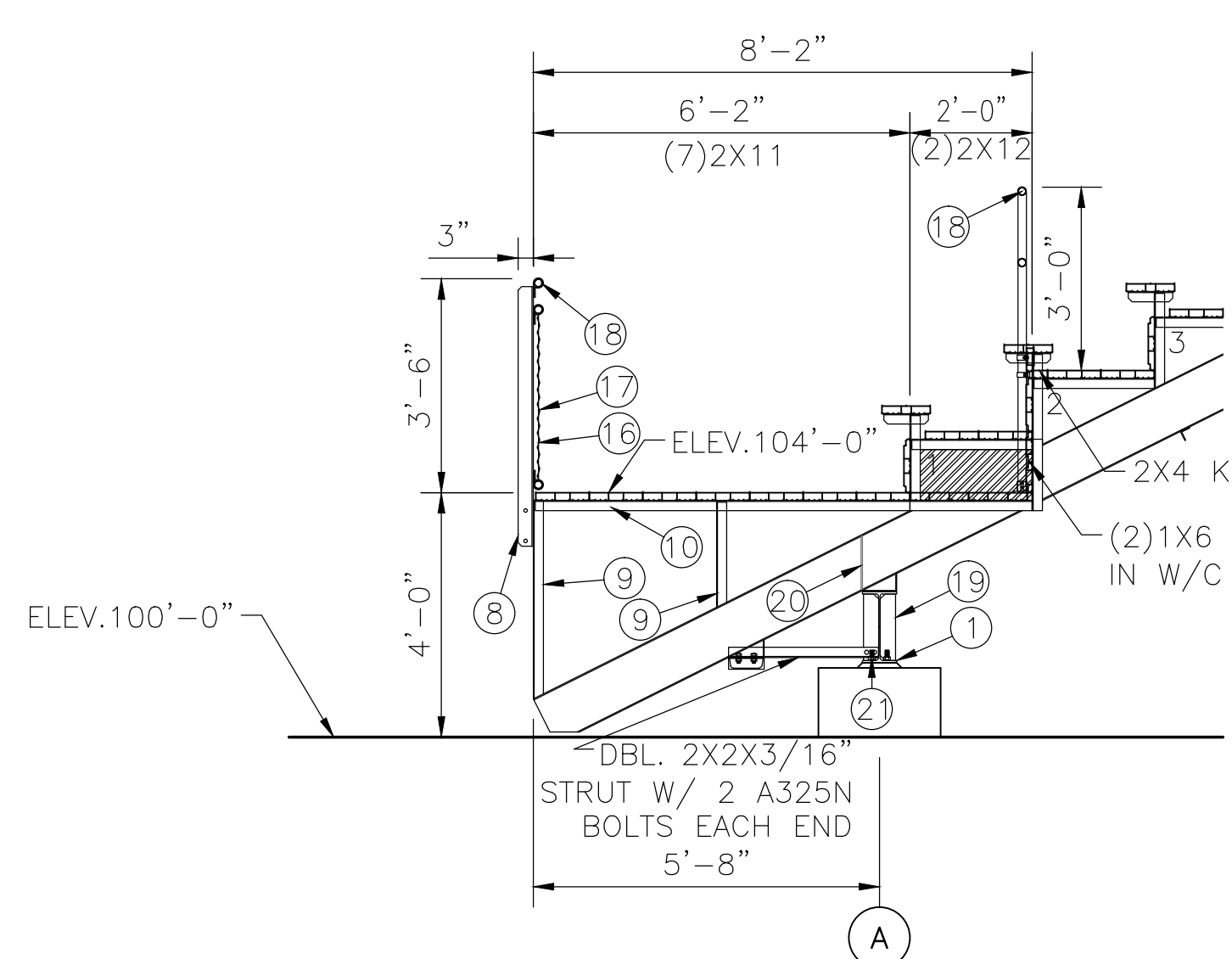
NOTES

- ① ALL STRUCTURAL AND MISCELLANEOUS STEEL SHALL CONFORM TO THE FOLLOWING A.I.S.C. STANDARDS
 PLATE UP TO 1/2" THICK = A36
 PLATE U.N.O. = A572 GRADE 50
 ANGLE = A36/A36M GRADE 50
 WIDE FLANGE = A992 Fy=50 ksi
 CHANNEL = A36/A36M GRADE 50
 ROD = A36/A529 GRADE 50
 TUBE = A500 GRADE "B" 46 ksi
- ② WELDS ARE ALL AROUND WITH TYPE ER70S-6 WIRE MIG.
- ③ ALL STEEL TO BE HOT DIPPED GALVANIZED TO A.S.T.M. A-123-89 ee1.
- ④ STRUCTURAL BOLTS ARE HOT DIPPED GALV. AND ARE EQUAL TO OR GREATER THAN A-307.
- ⑤ NO CONNECTIONS UTILIZING HIGH STRENGTH BOLTS ARE CLASSED AS SLIP CRITICAL.
- ⑥ ANODIZED ALUMINUM RAIL IS 1 1/4" NOMINAL PIPE SIZE. (1 5/8" O.D.)
- ⑦ SOUTHERN BLEACHER COMPANY AS A MANUFACTURER AND INSTALLER OF GRANDSTAND SEATING IS NOT AUTHORIZED TO CERTIFY PLANS AS ADA COMPLIANT. HOWEVER, TO THE BEST OF OUR KNOWLEDGE THESE PLANS MEET OR EXCEED ADA REQUIREMENTS FOR QUANTITY OF ADA SEATING, ACCESS/EGRESS TO ADA SEATING, & DISPERSAL OF ADA SEATING.
- ⑧ ALL FIELD CONNECTIONS ARE NON-SLIP CRITICAL U.N.O. ALL CONNECTIONS ARE DESIGNED TO UTILIZE A307 BOLTS, IT IS ACCEPTABLE TO USE A325N BOLTS IN LIEU OF THE A307 BOLTS. THE INSTALLATION OF THESE BOLTS ARE TO BE TIGHTENED A SNUG TIGHT CONDITION AS SPECIFIED BY AISC.

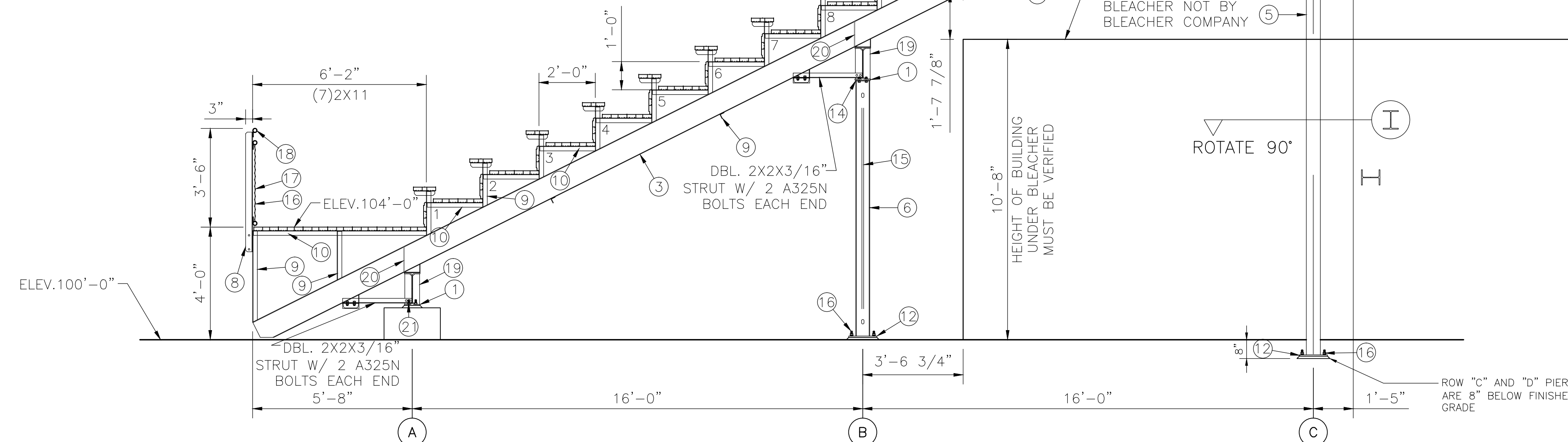


- A = 2 X 10 ANODIZED ALUMINUM SEAT
- B = 2 X 11 MILL ALUMINUM TREAD
- C = 2 X 4 MILL ALUMINUM STEP NOSE (KL) TREAD
- D = 1 X 10 1/2 ANODIZED ALUMINUM FLAT RISER
- E = 1 X 1 PAINTED ALUMINUM CONTRASTING NOSING (BLACK)
- F = 2 X 8 MILL ALUM. INTERLOCK HALFSTEP - DECK
- G = 2 X 4 MILL ALUM. INTERLOCK HALFSTEP - NOSE W/RISER
- H = 4 1/2" MILL ALUMINUM HALFSTEP BRACKET
- J = 4 1/2" ANODIZED ALUMINUM INTERLOCK STEP RISER

① PLANK ARRANGEMENT
 NOT TO SCALE 12" X 24"



② SECTION VIEW @ W/C
 SCALE: 3/8" = 1'-0"



③ SECTION VIEW
 SCALE: 3/8" = 1'-0"

BROOKS RANSOM ASSOCIATES
 ARCHITECTS
 1100 UNIVERSITY BLVD., SUITE 100
 FAYETTEVILLE, ALABAMA 36801
 PH: (559)449-8444 • FAX: (559)449-8404

Southern BLEACHER COMPANY
 PO Box One, Graham, Texas 76450
 801 Fifth Street
 Phone: 940/549-0733 Fax: 940/549-1365
 Established 1946

GRANDSTANDS • BLEACHERS • STADIUMS



SECTION VIEWS
 12" RISE X 24" TREAD / 17 ROWS

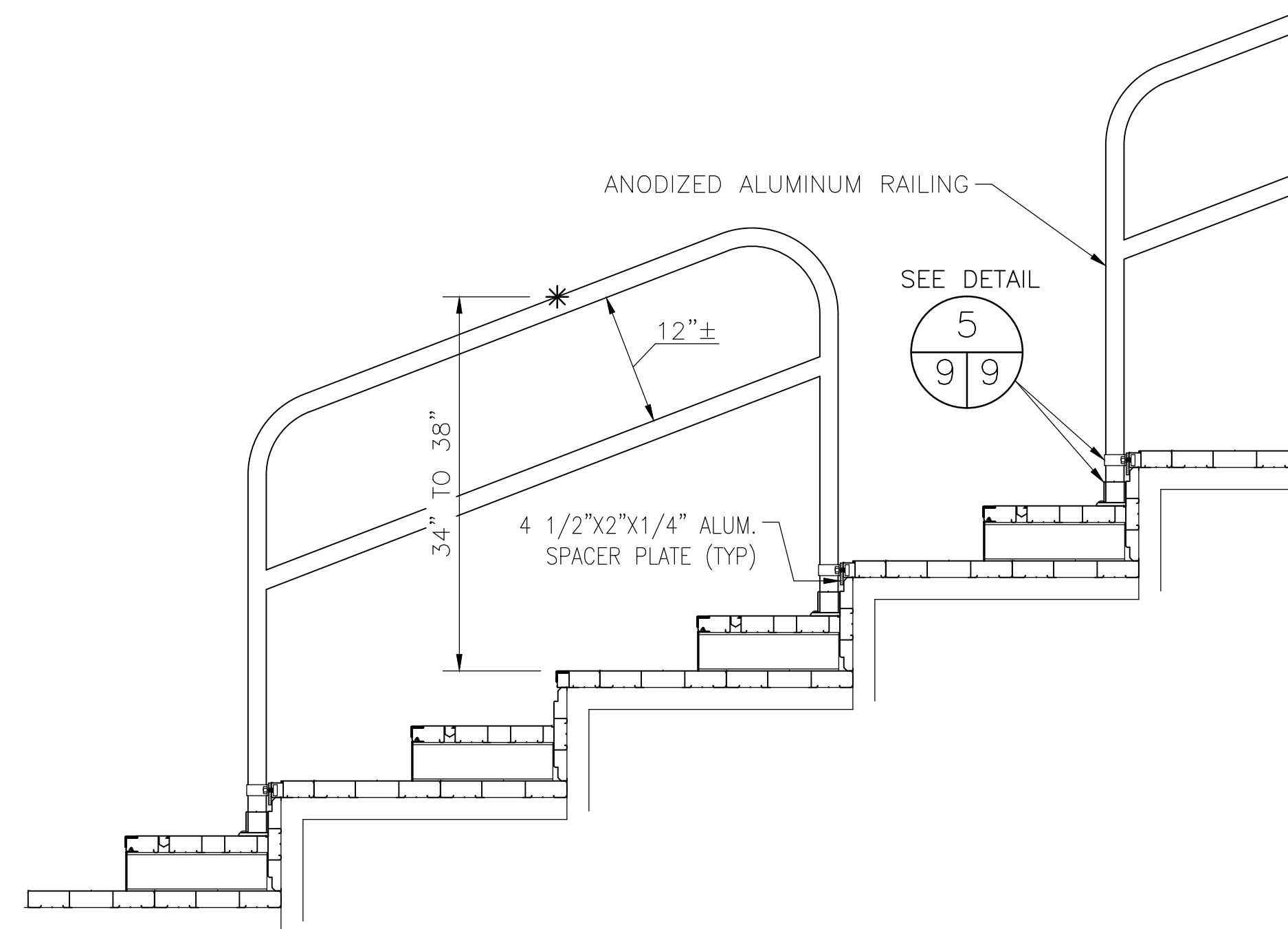
BLUE COLLAR DESTINATIONS
 B.C. COUNTRY-CHAMPIONSHIP FIELD
 FOLEY, ALABAMA

REV	DATE	DESCRIPTION
1	6/16/15	CF/EM/DR
JOB NUMBER 15174		
SHEET 1 OF 9		

22" X 34" (11x17 = 1/2 indicated scale)

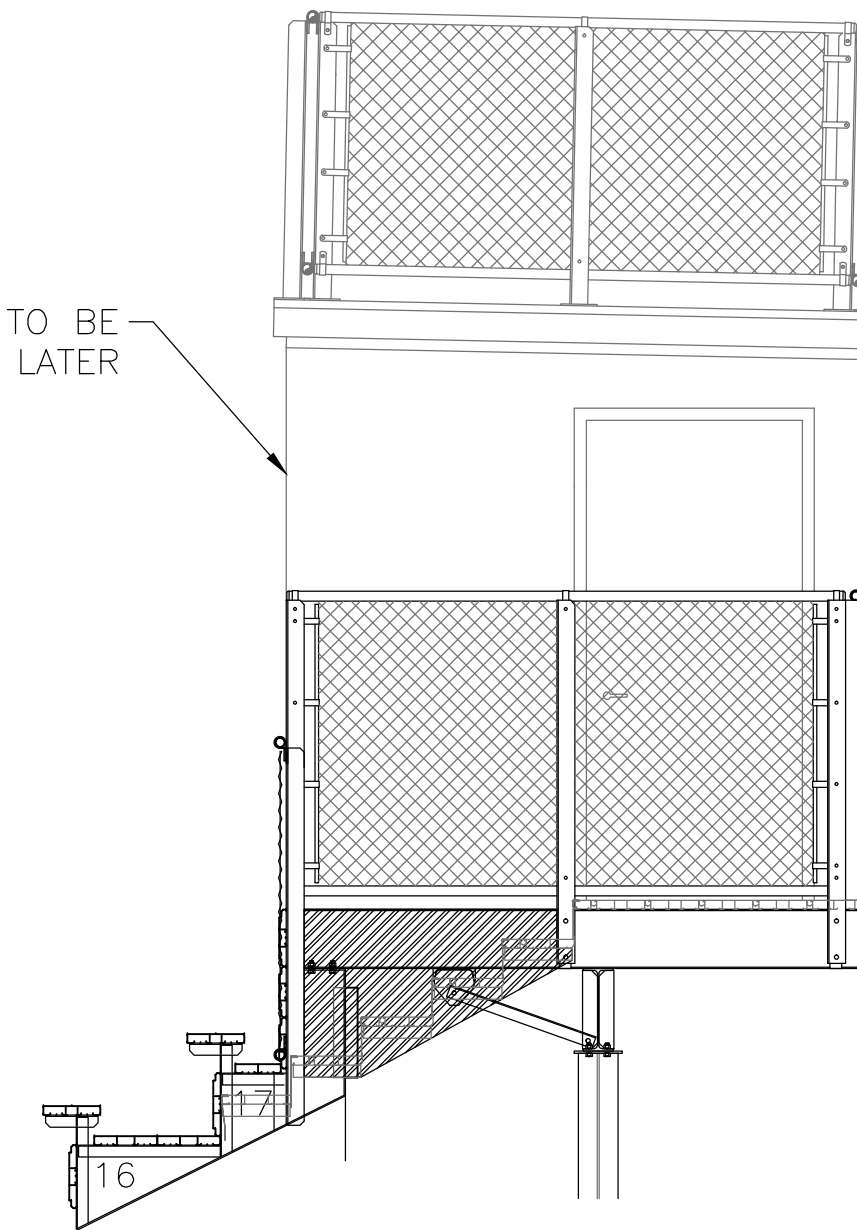
ITEM DESCRIPTION

- ① W 14 X 34 (50 ksi)
- ② W 14 X 22 (50 ksi)
- ③ W 10 X 12 (50 ksi)
- ④ W 8 X 28 (50 ksi)
- ⑤ W 8 X 24 (50 ksi)
- ⑥ W 6 X 15 (50 ksi)
- ⑦ W 6 X 9 (50 ksi)
- ⑧ L 3 X 3 X 1/4 (50 ksi)
- ⑨ L 2 X 2 X 3/16 (50 ksi)
- ⑩ L 2 X 1 1/2 X 3/16 (50 ksi)
- ⑪ L 1 1/2 X 1 1/2 X 3/16 (50 ksi)
- ⑫ 12 X 12 X 5/8 PLATE
- ⑬ 8 X 8 X 3/8 PLATE
- ⑭ 6 X 8 X 3/8 PLATE
- ⑮ 3/4 X REQ'D LENGTH SWAY ROD (50 ksi)
- ⑯ 3/4 X 18 ANCHOR BOLT W/2 HEX HEAD NUTS & FLAT WASHER
- ⑰ 9 GAUGE CHAINLINK FENCE
- ⑱ ANODIZED ALUMINUM RAIL (SEE NOTES)
- ⑲ 3 X 3/8 GUSSET PLATE (A36)
- ⑳ 2 X 1/4 GUSSET PLATE (A36)
- ㉑ 7/8 X 21 ANCHOR BOLT W/2 HEX HEAD NUTS & FLAT WASHER

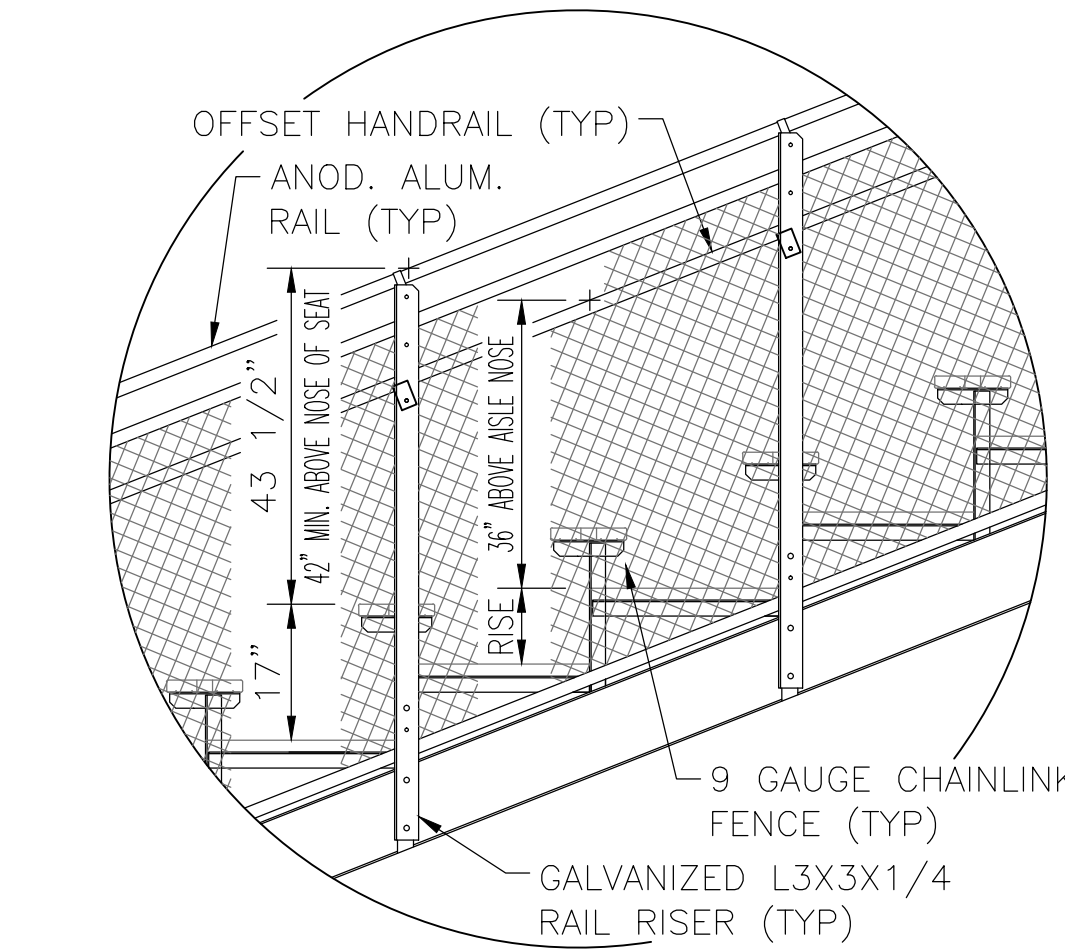


① ④ 2 MID-AISLE INSTALLATION DETAIL
NOT TO SCALE

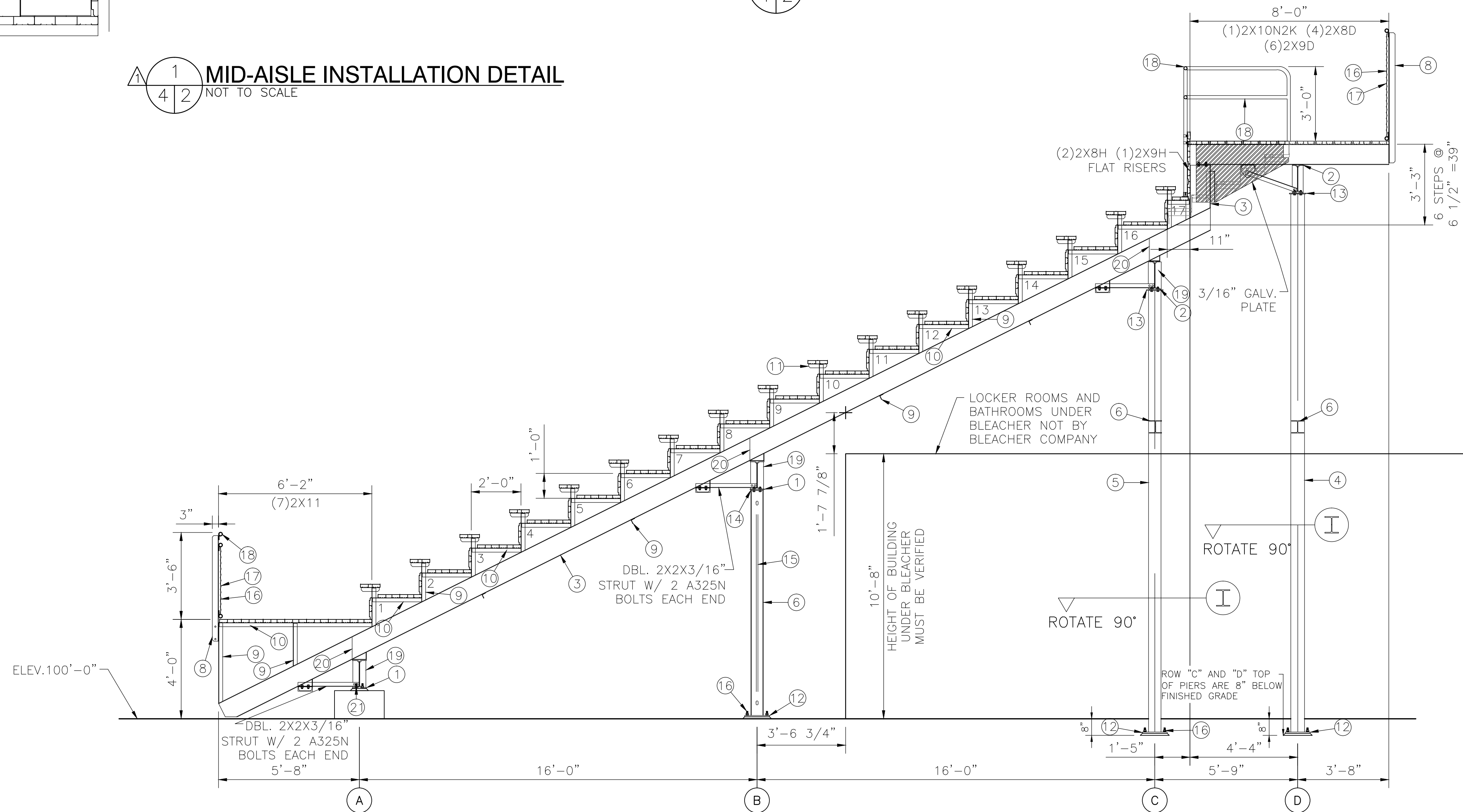
PRESSBOX TO BE ADDED LATER



SECTION VIEW @ LANDING (SHOWN WITH FUTURE PRESSBOX)
SCALE: 3/8"=1'-0"



③ ② 2 SIDE RAILING @ END AISLE
NOT TO SCALE



④ ④ 2 SECTION VIEW @ VIEWING PLATFORM
SCALE: 3/8"=1'-0"

DETAIL NUMBER 117
SHEET SHOWN ON 310
SHEET CUT FROM

BROOKS RANSOM ASSOCIATES
ARCHITECTS
1000 PINEHURST DRIVE
DUBLIN, GA 30128
PH: (559)449-8444 • FAX: (559)449-8404

THIS DRAWING AND ALL INFORMATION THEREIN IS THE PROPERTY OF BROOKS RANSOM INC. AND SOUTHERN BLEACHER COMPANY. IT MAY NOT BE REPRODUCED OR TRANSMITTED IN ANY FORM OR BY ANY MEANS, ELECTRONIC OR MECHANICAL, WITHOUT THE WRITTEN CONSENT OF BOTH BROOKS RANSOM INC. OR SOUTHERN BLEACHER COMPANY. THE INFORMATION CONTAINED HEREIN IS INTENDED FOR UPON DEMAND. DRAWING IS PROTECTED UNDER U.S. AND INTERNATIONAL COPYRIGHT LAW.

ESTABLISHED 1946

PO Box One, Graham, Texas 76450
801 Fifth Street
Phone: 940/549-0733 Fax: 940/549-1365

Southern
BLEACHER COMPANY
GRANDSTANDS • BLEACHERS • STADIUMS

SECTION VIEW @ VIEWING PLATFORM
12" RISE X 24" TREAD / 17 ROWS W/8" PLATFORM

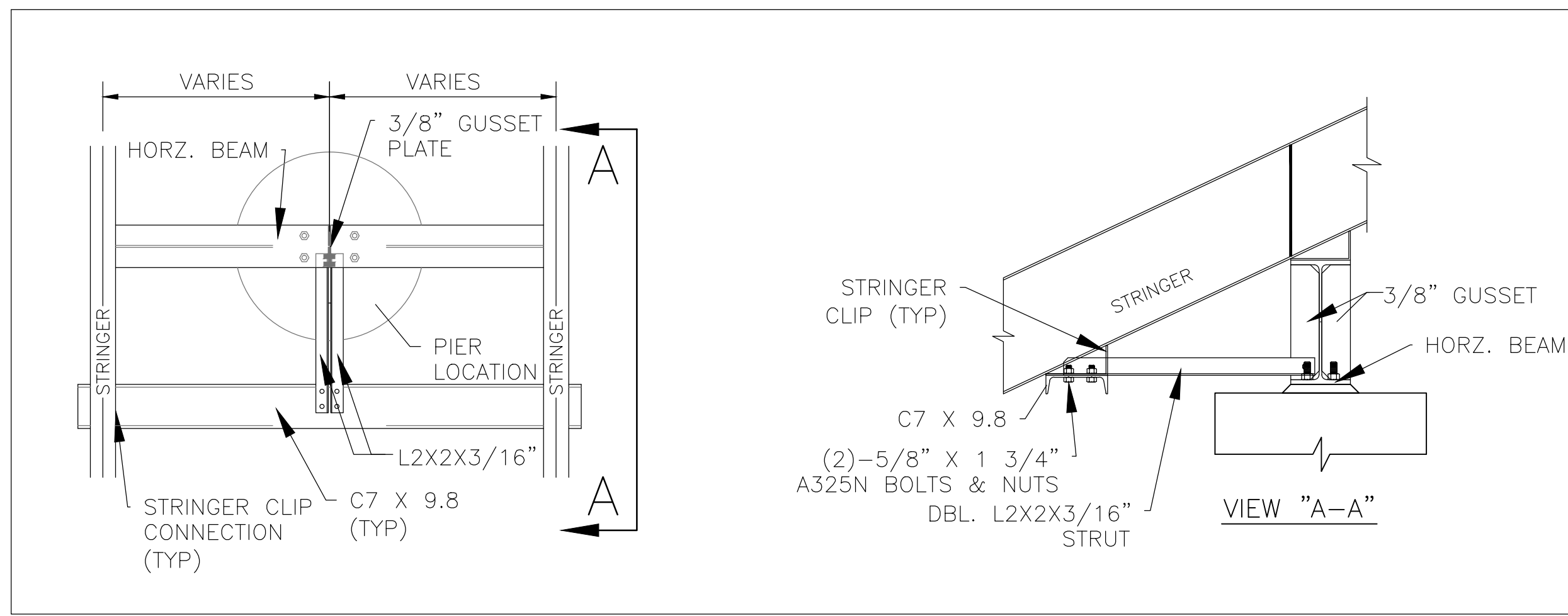
BLUE COLLAR DESTINATIONS
B.C. COUNTRY—CHAMPIONSHIP FIELD
FOLEY, ALABAMA

DATE: 6/16/15
DRAWN: CF
CHECKED: EM/DR

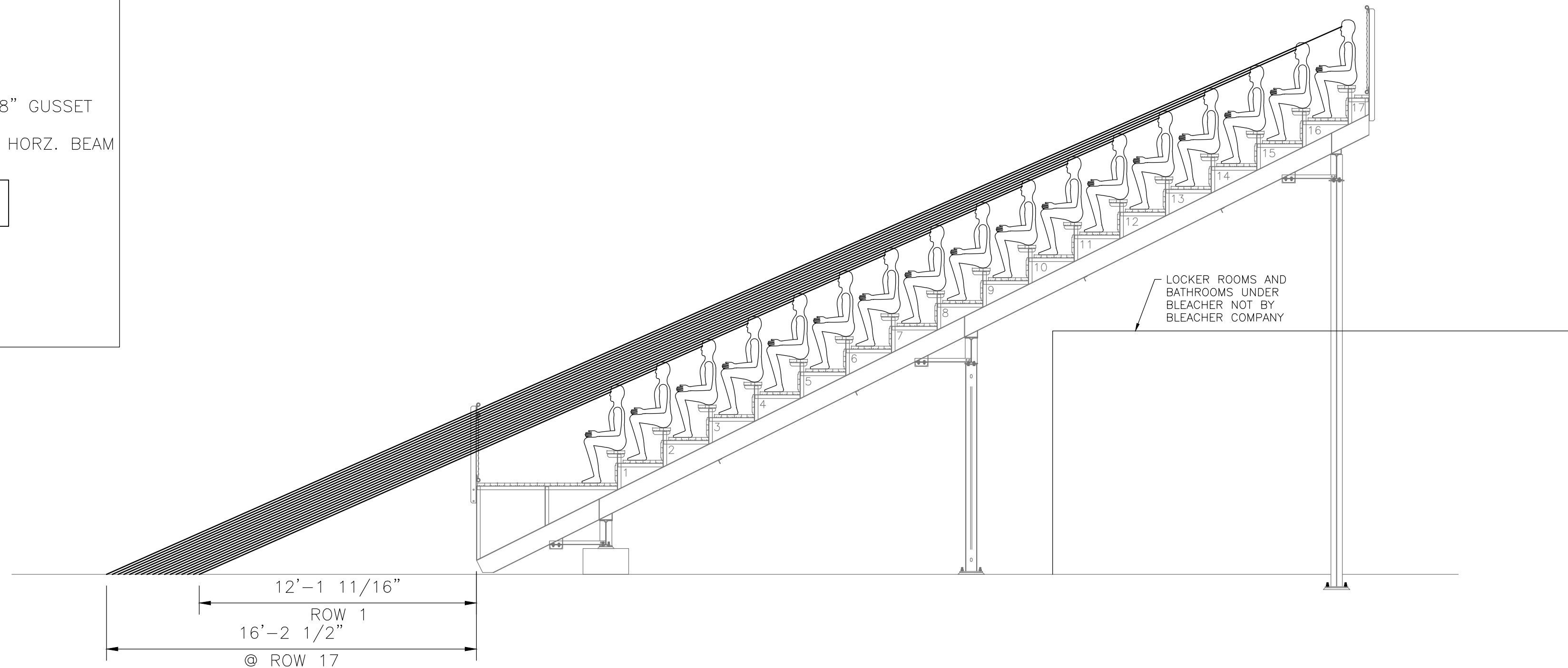
JOB NUMBER: 15174

SHEET 2 OF 9

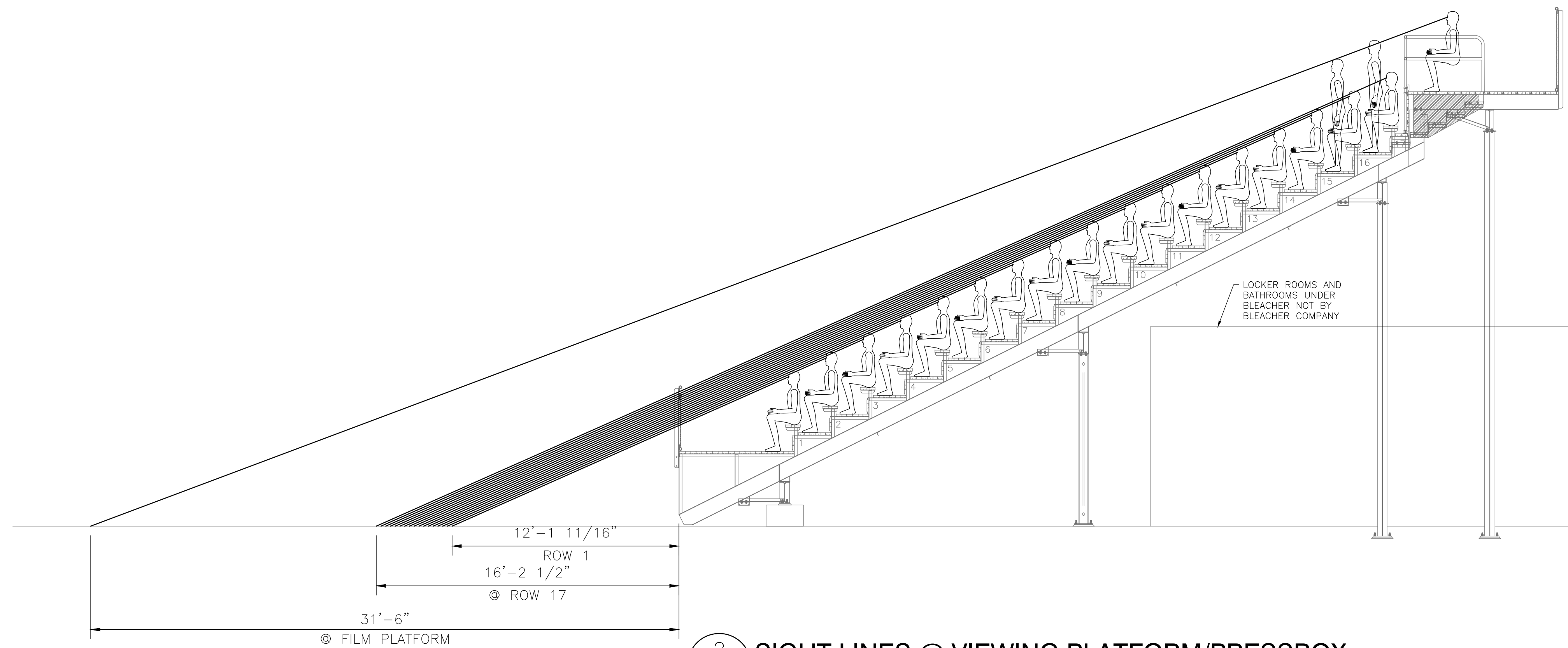
22" X 34" (11x17 = 1/2 indicated scale)



3 OFFSET PIER STRUT CONNECTION DETAIL
 5/3 NOT TO SCALE



1 SIGHT LINES
 4/4 SCALE: 1/4" = 1'-0"



2 SIGHT LINES @ VIEWING PLATFORM/PRESSBOX
 4/4 SCALE: 1/4" = 1'-0"

DETAIL NUMBER 17
 SHEET SHOWN ON 310
 SHEET CUT FROM

BROOKS RANSOM ASSOCIATES
 CIVIL ENGINEERING ARCHITECTURE INTERIORS
 P.O. BOX 100000
 TAMPA, FL 33610
 PH: (813) 289-8444 • FAX: (813) 289-8404

PO Box One, Graham, Texas 76450
 801 Fifth Street
 Phone: 940/549-0733 Fax: 940/549-1365

Southern
 BLEACHER COMPANY
 GRANDSTANDS • BLEACHERS • STADIUMS
 Established 1946

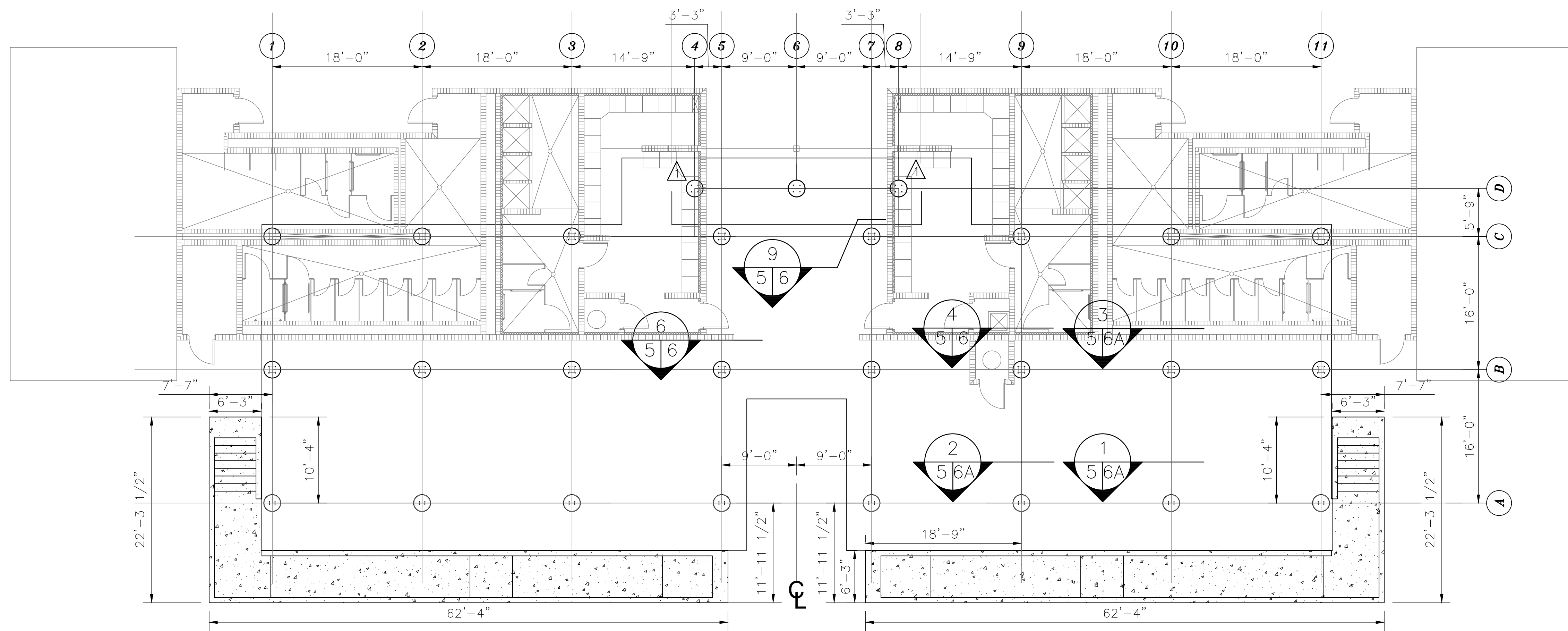
THIS DRAWING AND ALL INFORMATION THEREIN IS THE PROPERTY OF BROOKS RANSOM INC. AND SOUTHERN BLEACHER COMPANY. IT MAY NOT BE REPRODUCED OR TRANSMITTED IN ANY FORM OR BY ANY MEANS, ELECTRONIC OR MECHANICAL, WITHOUT THE WRITTEN CONSENT OF BOTH BROOKS RANSOM INC. OR SOUTHERN BLEACHER COMPANY. THE DRAWING IS TO BE USED ONLY FOR THE PROJECT AND UPON DEMAND. DRAWINGS ARE PROTECTED UNDER U.S. AND INTERNATIONAL COPYRIGHT LAW.



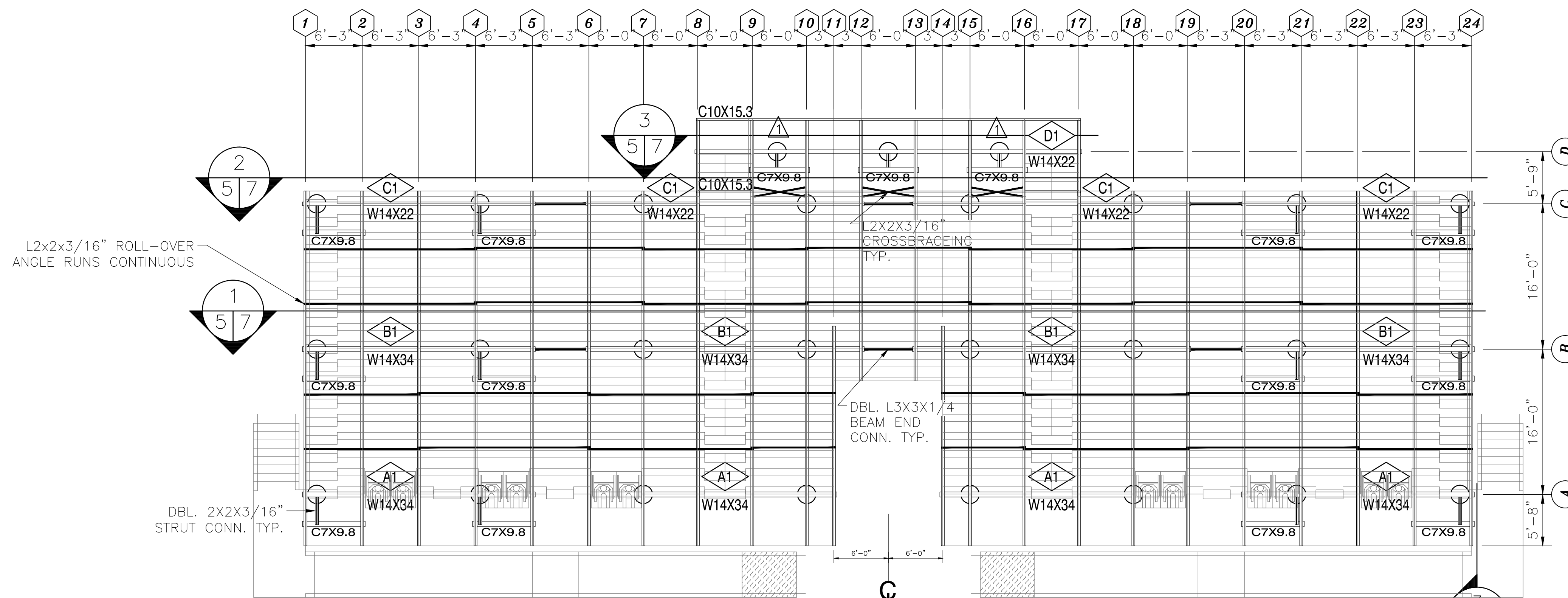
DATE	6/16/15	DRAWN	CF	CHECKED	EM/DR
REV. BY	DATE	DESCRIPTION			
SIGHT LINES 12" RISE X 24" TREAD / 17 ROWS & 8' PLATFORM					
BLUE COLLAR DESTINATIONS					
B.C. COUNTRY-CHAMPIONSHIP FIELD					
FOLEY, ALABAMA					
JOB NUMBER 15174					
SHEET 3			OF 9		

22" X 34" (11x17 = 1/2 indicated scale)





1 FOOTING LAYOUT
SCALE: 1/8" = 1'-0"



2 UNDER STRUCTURE LAYOUT
SCALE: 1/8" = 1'-0"

1-1
3/10
DETAIL NUMBER
SHEET SHOWN ON
SHEET CUT FROM

BROOKS RANSOM ASSOCIATES
ARCHITECTS
1000 UNIVERSITY BLVD., SUITE 100
FOLEY, ALABAMA 36530
PH: (559)449-8444 • FAX: (559)449-8404

PO Box One, Graham, Texas 76450
801 Fifth Street
Phone: 940/549-0733 Fax: 940/549-1365

Southern
BLEACHER COMPANY
GRANDSTANDS • BLEACHERS • STADIUMS
Established 1946



FOOTING AND UNDER STRUCTURE LAYOUTS
128'-6" X 24" TREAD/17 ROWS & 8' X 30' PLATFORM

BLUE COLLAR DESTINATIONS
B.C. COUNTRY-CHAMPIONSHIP FIELD
FOLEY, ALABAMA

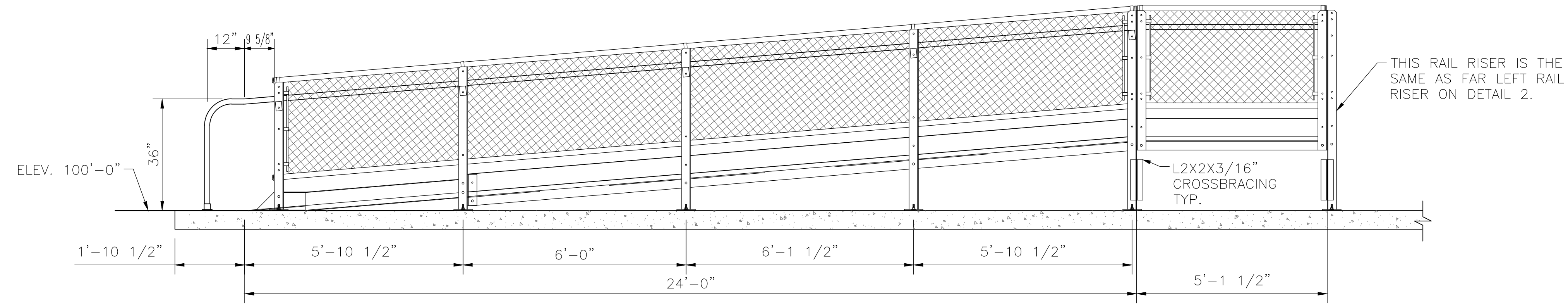
REV	BY	DATE	DESCRIPTION
1	CF	6/16/15	CF EM/DR

JOB NUMBER
15174

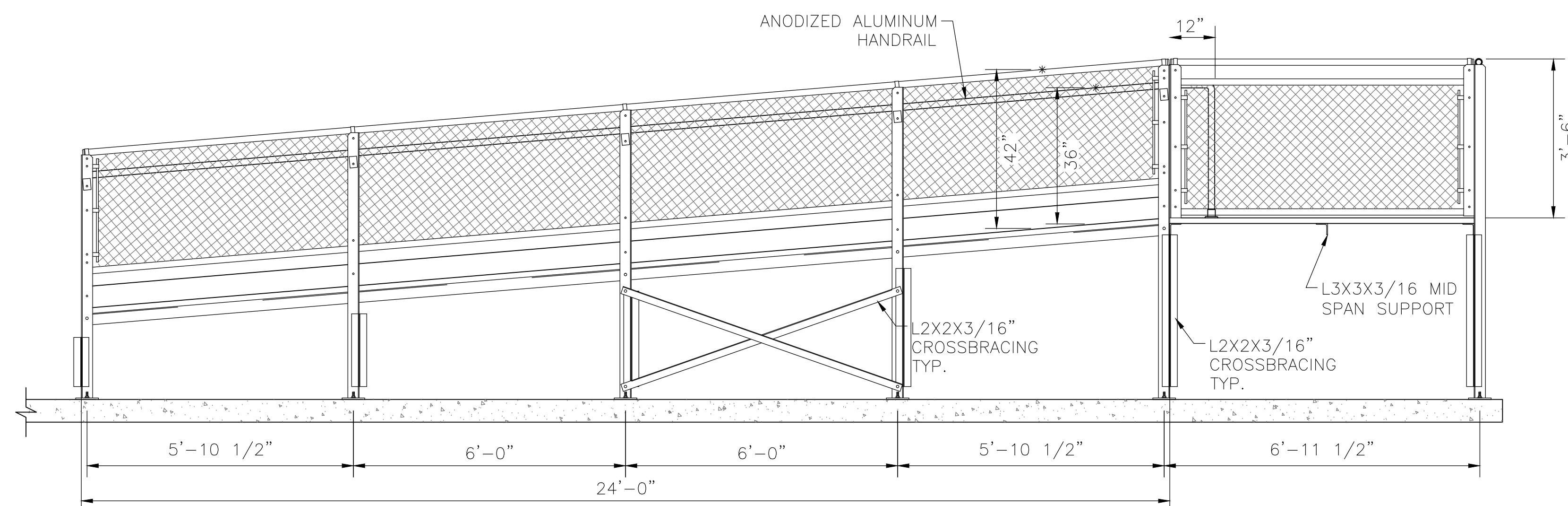
SHEET
5 OF
9

22" X 34" (11x17 = 1/2 indicated scale)

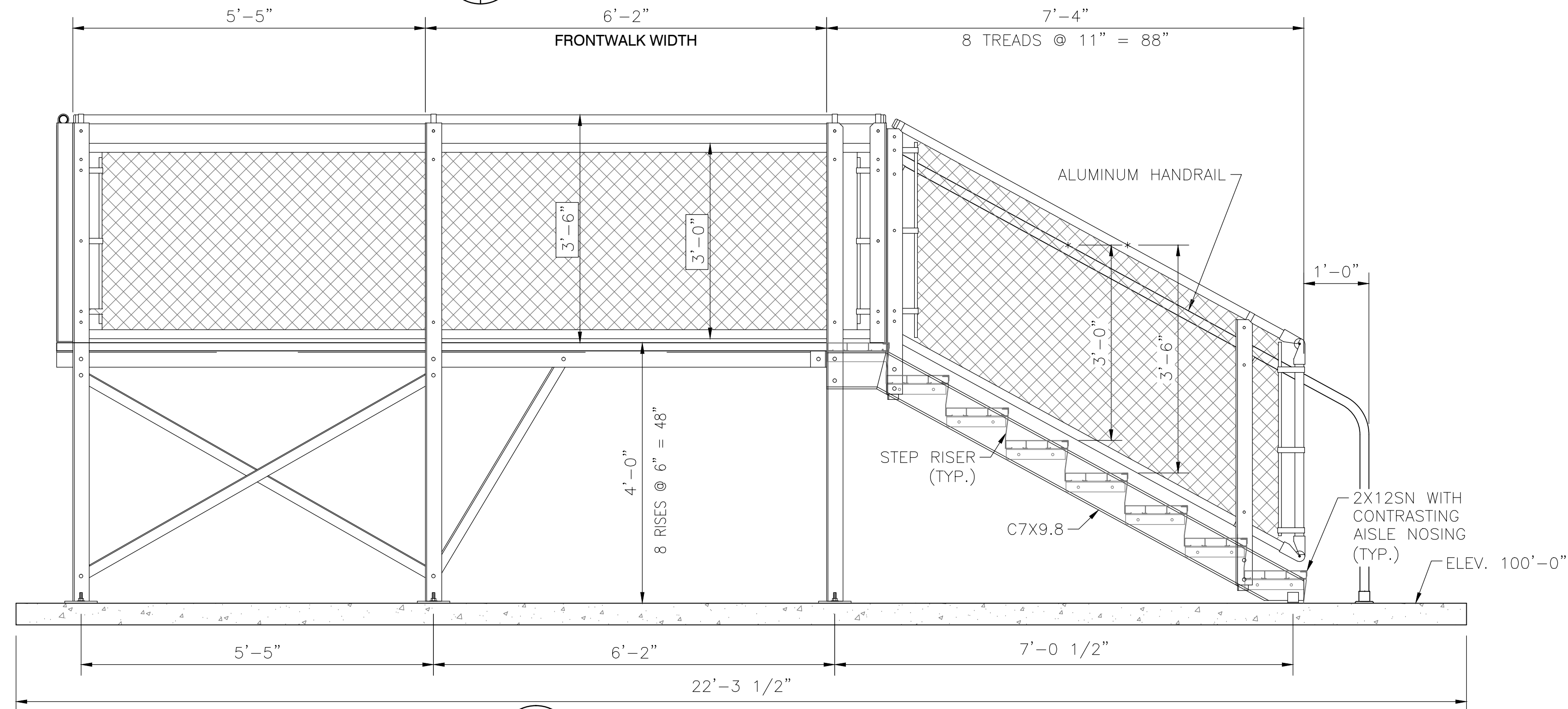




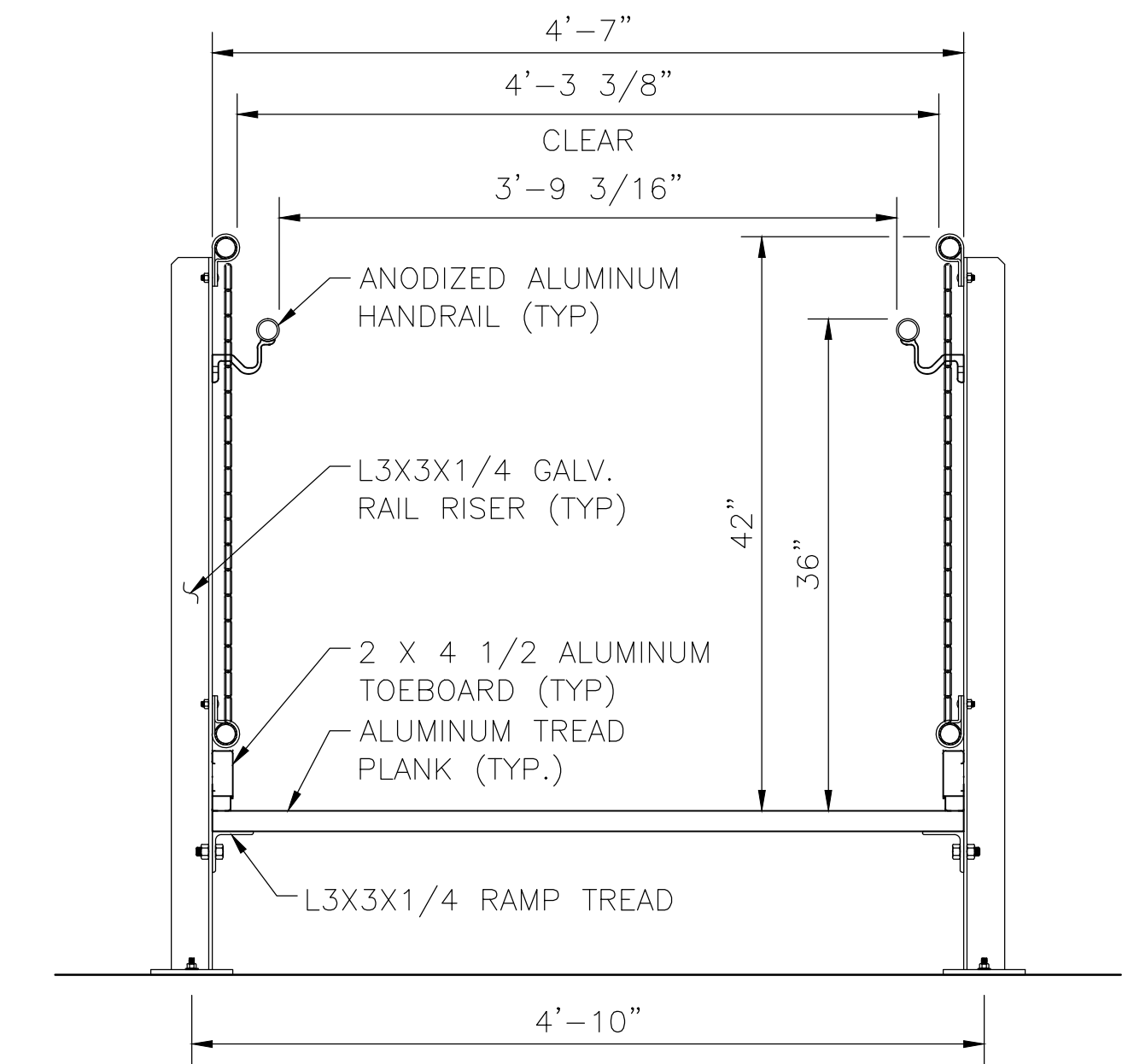
1
4/8 1:12 RAMP SECTION DETAIL
NOT TO SCALE



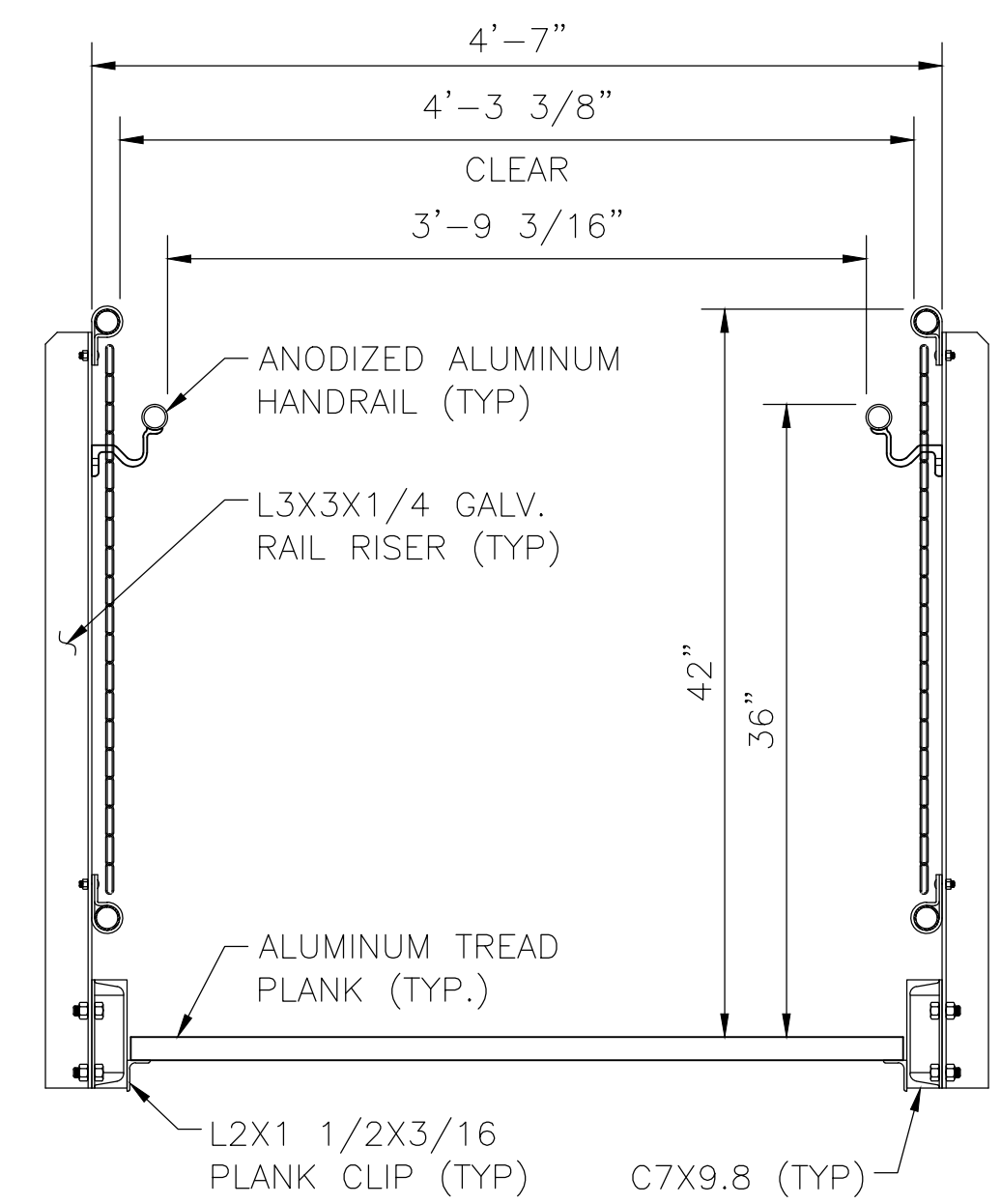
2
4/8 1:12 RAMP SECTION DETAIL
NOT TO SCALE



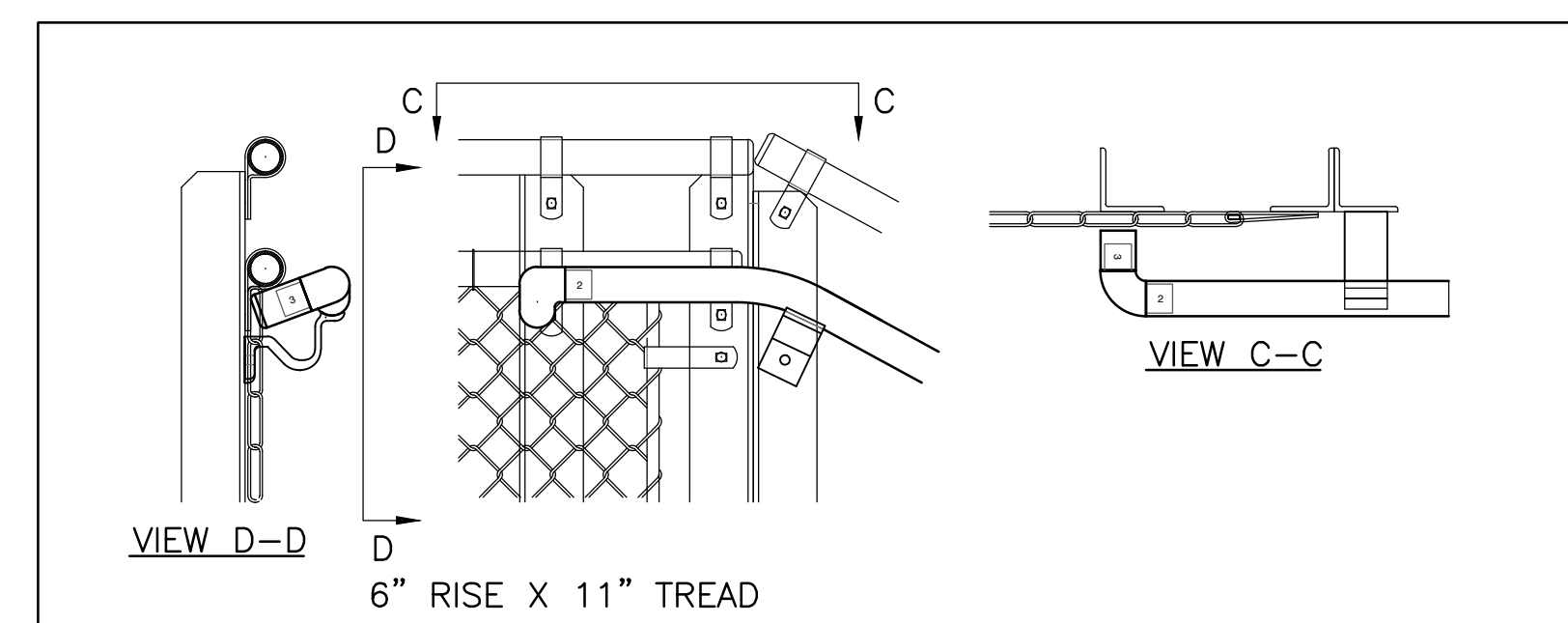
4
4/8 EXIT STEP DETAIL
NOT TO SCALE



3
4/8 RAMP SECTION
NOT TO SCALE



5
4/8 EXIT STEP SECTION
NOT TO SCALE



6
8/8 EXIT STEP HANDRAIL TERMINATION DETAIL
NOT TO SCALE

THIS DRAWING AND ALL INFORMATION THEREIN IS THE PROPERTY OF BROOKS RANSOM INC. AND SOUTHERN BLEACHER COMPANY. IT MAY NOT BE REPRODUCED OR TRANSMITTED IN ANY FORM OR BY ANY MEANS, ELECTRONIC OR MECHANICAL, WITHOUT THE WRITTEN CONSENT OF BOTH BROOKS RANSOM INC. OR SOUTHERN BLEACHER COMPANY. THE USER OF THIS DRAWING SHALL BE RESPONSIBLE FOR OBTAINING ALL NECESSARY PERMITS AND FOR PROTECTING AGAINST UNLAWFUL REPRODUCTION. U.S. AND INTERNATIONAL COPYRIGHT LAW.

BROOKS RANSOM ASSOCIATES
 CIVIL ENGINEERING, ARCHITECTURE, INTERIORS
 P.O. BOX ONE, GRAHAM, TEXAS 76450
 PHONE: (559) 449-8444 • FAX: (559) 449-8404

Southern BLEACHER COMPANY
 GRANDSTANDS • BLEACHERS • STADIUMS
 P.O. BOX ONE, GRAHAM, TEXAS 76450
 801 FIFTH STREET
 PHONE: (940) 549-0733 FAX: (940) 549-1365
 ESTABLISHED 1946

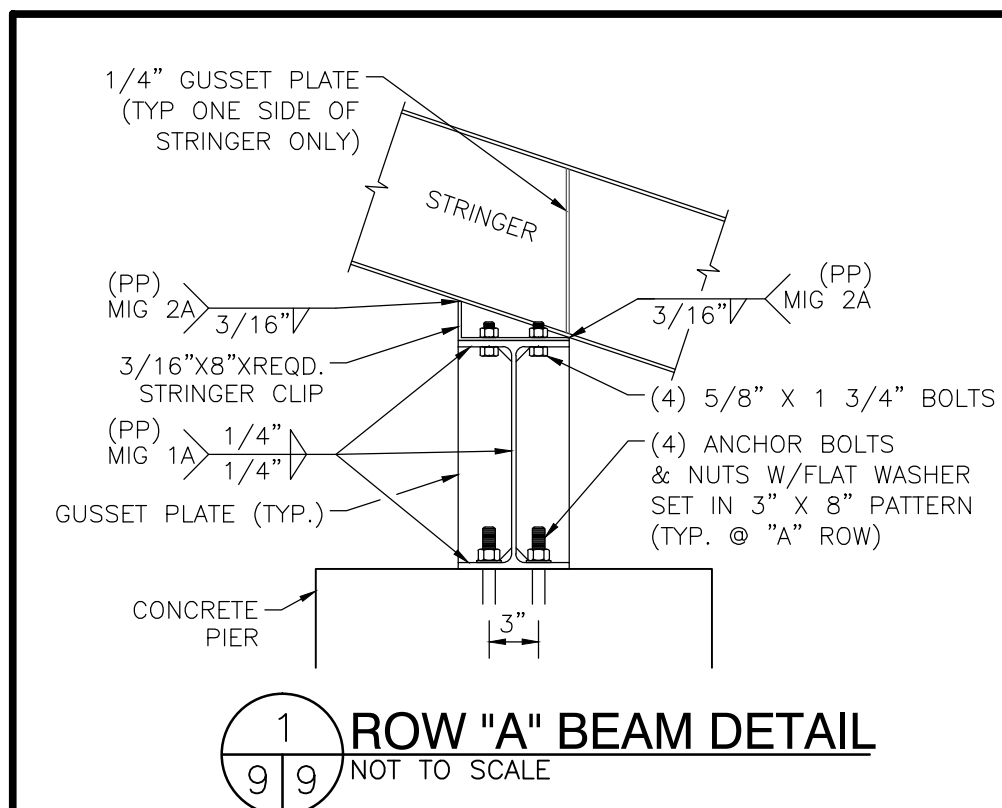
THE
 EXIT DETAILS
 BLUE COLLAR DESTINATIONS
 B.C. COUNTRY-CHAMPIONSHIP FIELD
 FOLEY, ALABAMA

REV	DATE	DESCRIPTION
1	6/16/15	CF EM/DT

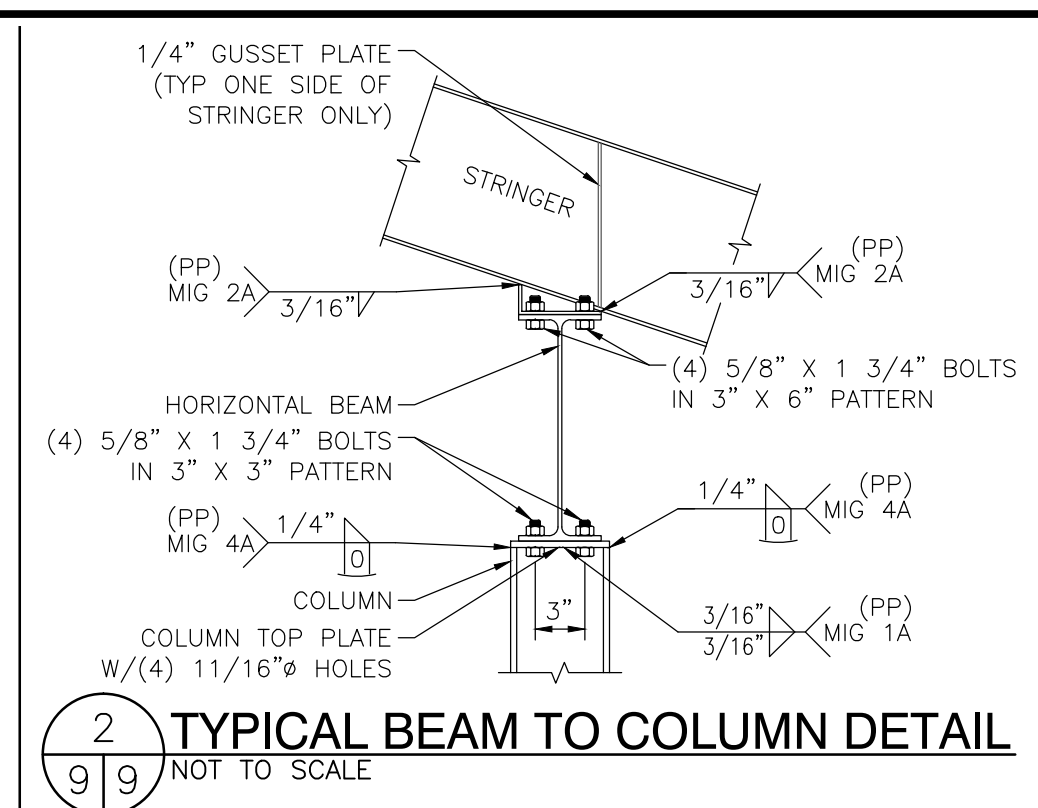
JOB NUMBER
15174

SHEET
8 OF **9**

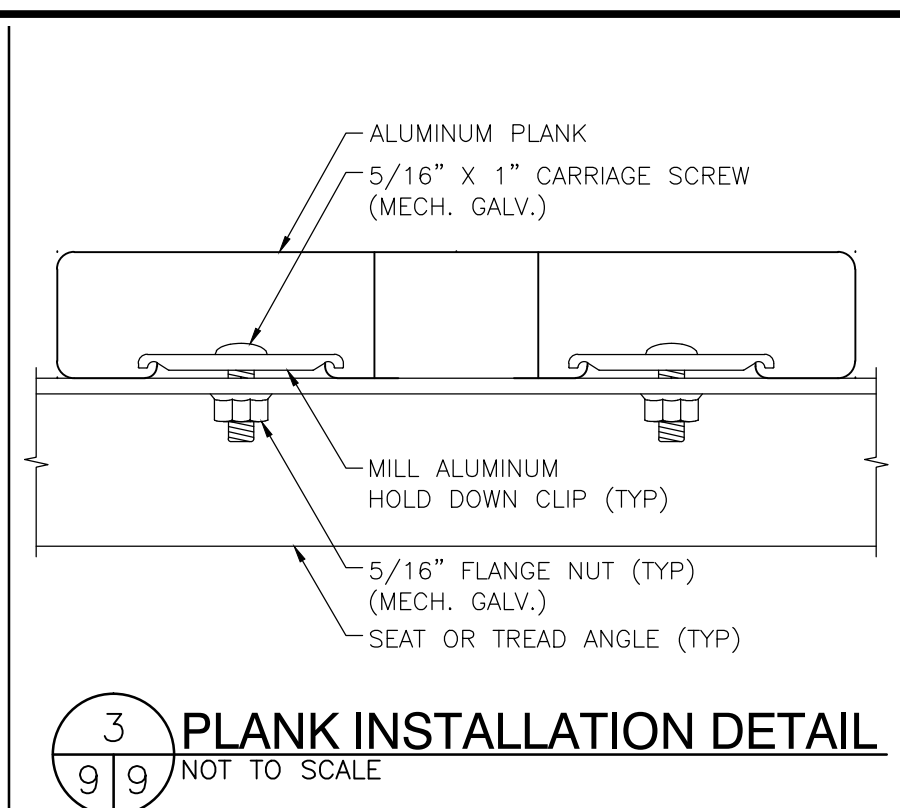
22" X 34" (11x17 = 1/2 indicated scale)



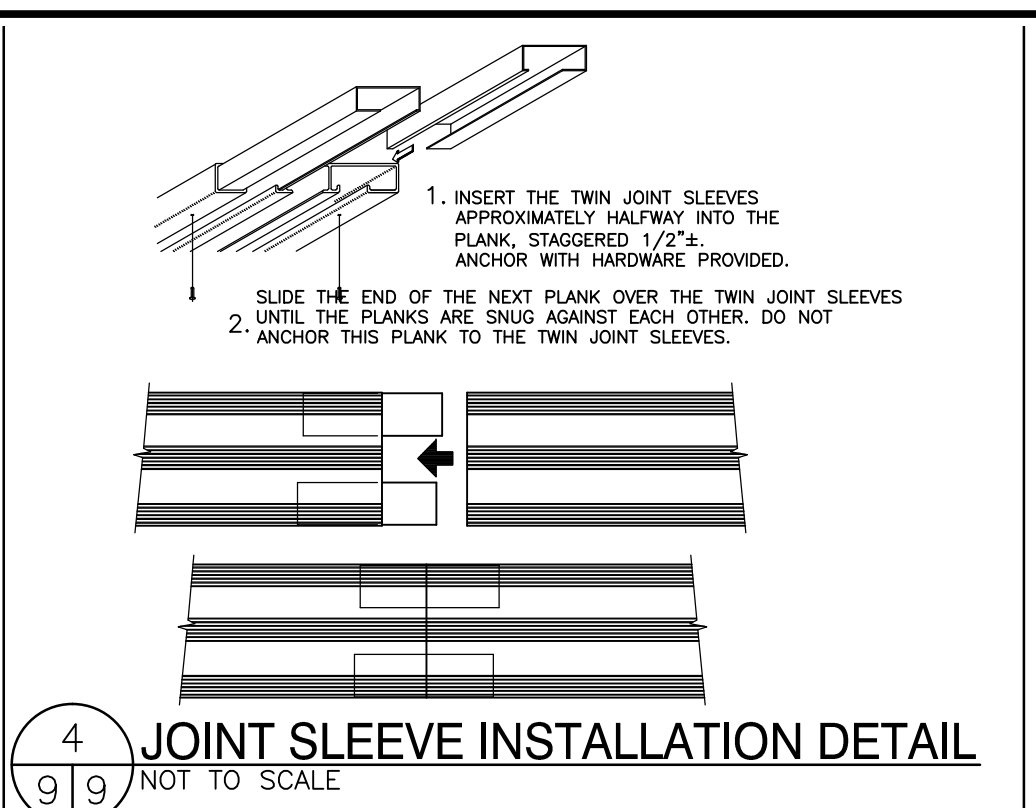
1 ROW "A" BEAM DETAIL
NOT TO SCALE



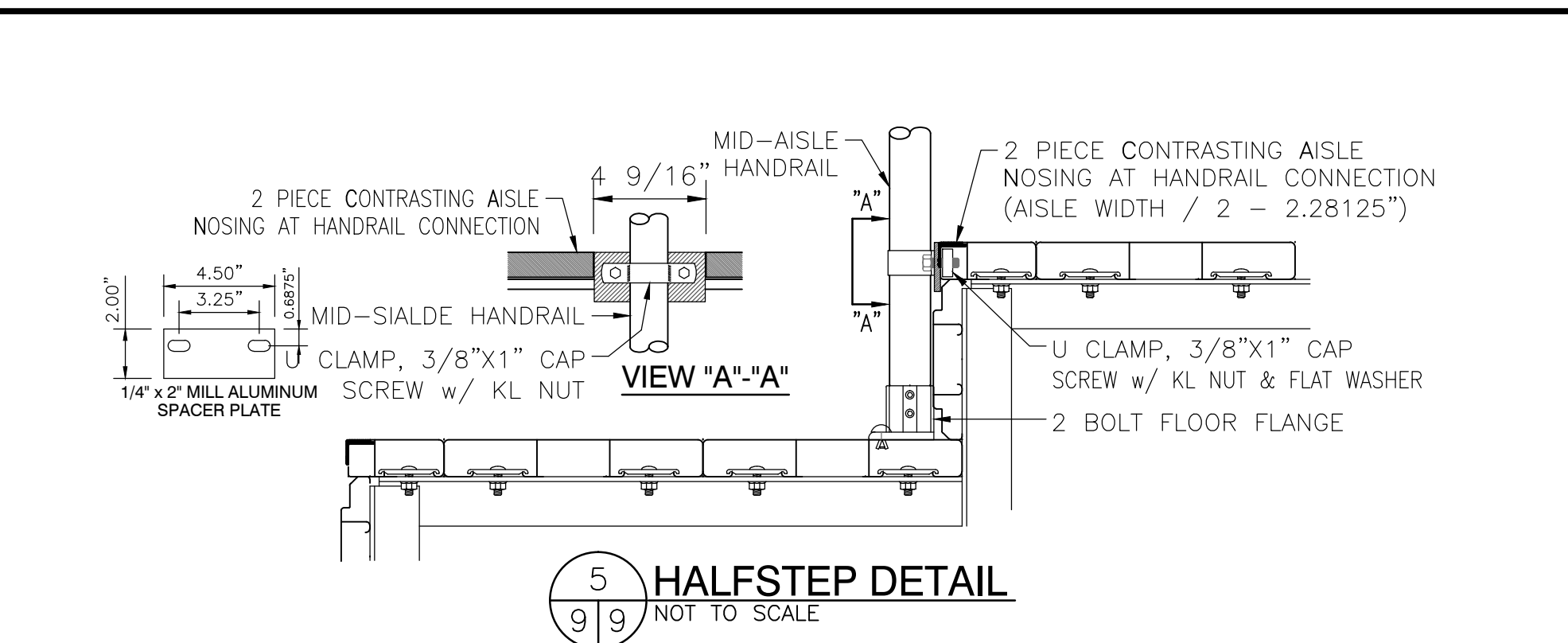
2 TYPICAL BEAM TO COLUMN DETAIL
NOT TO SCALE



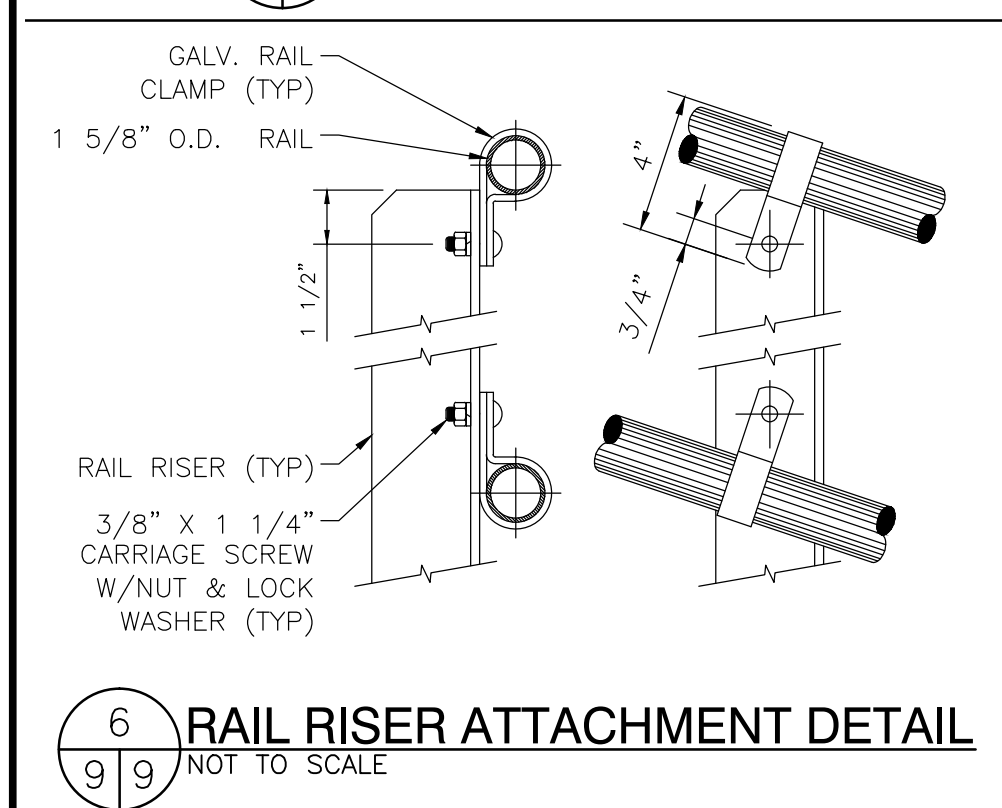
3 PLANK INSTALLATION DETAIL
NOT TO SCALE



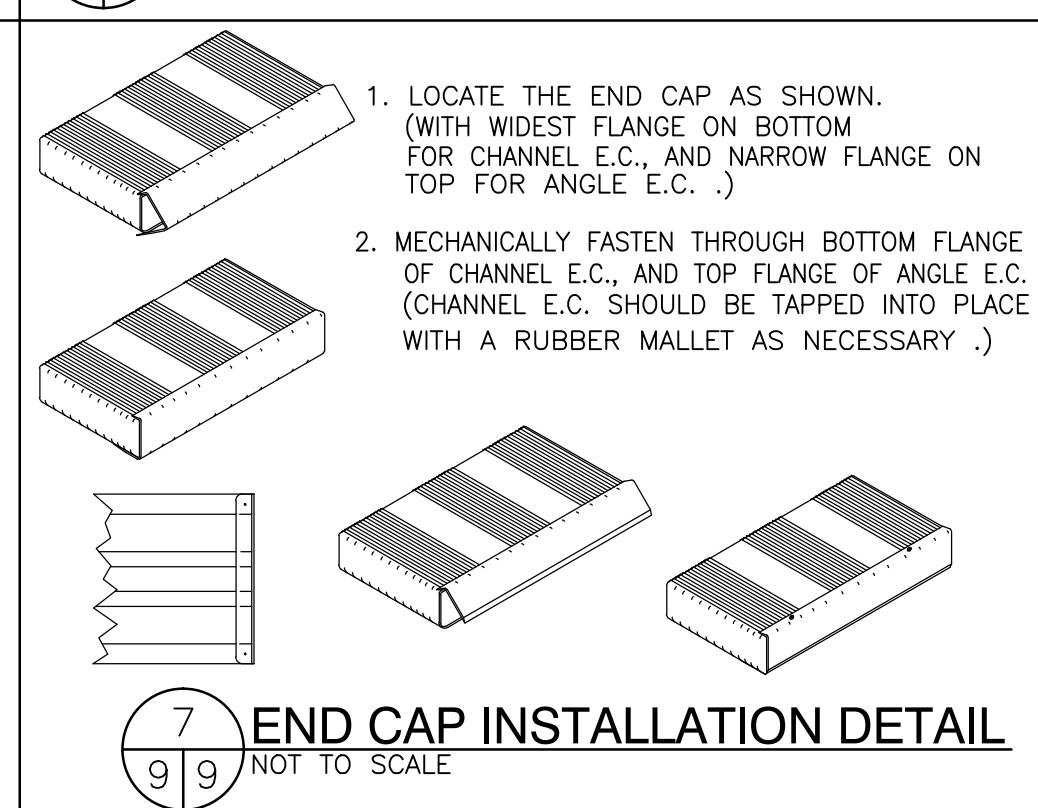
4 JOINT SLEEVE INSTALLATION DETAIL
NOT TO SCALE



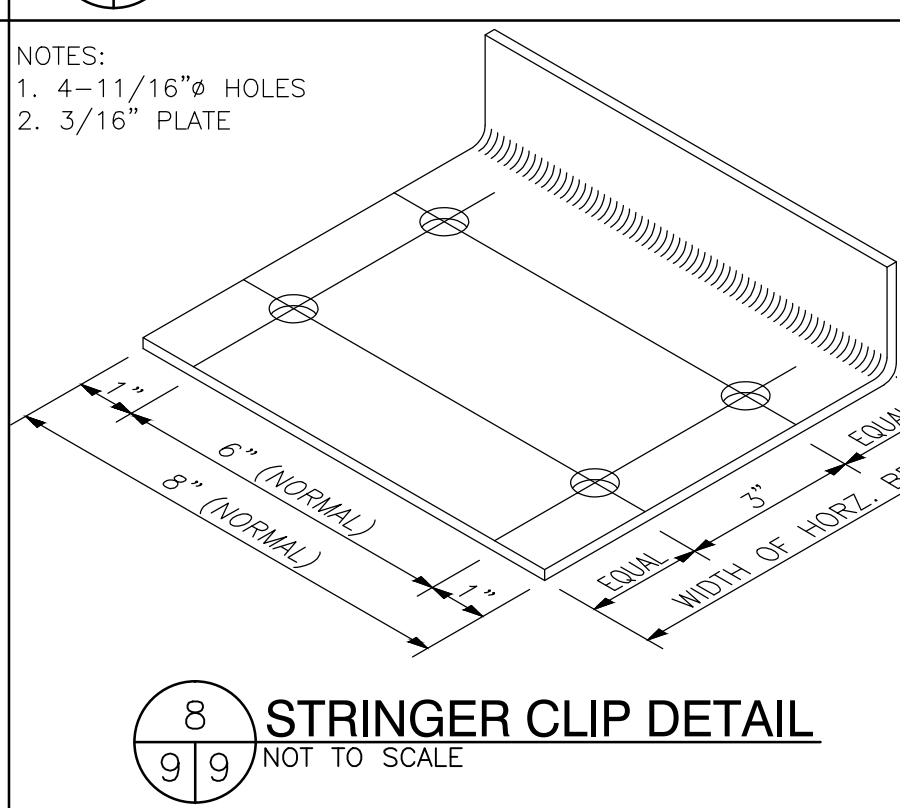
5 HALFSTEP DETAIL
NOT TO SCALE



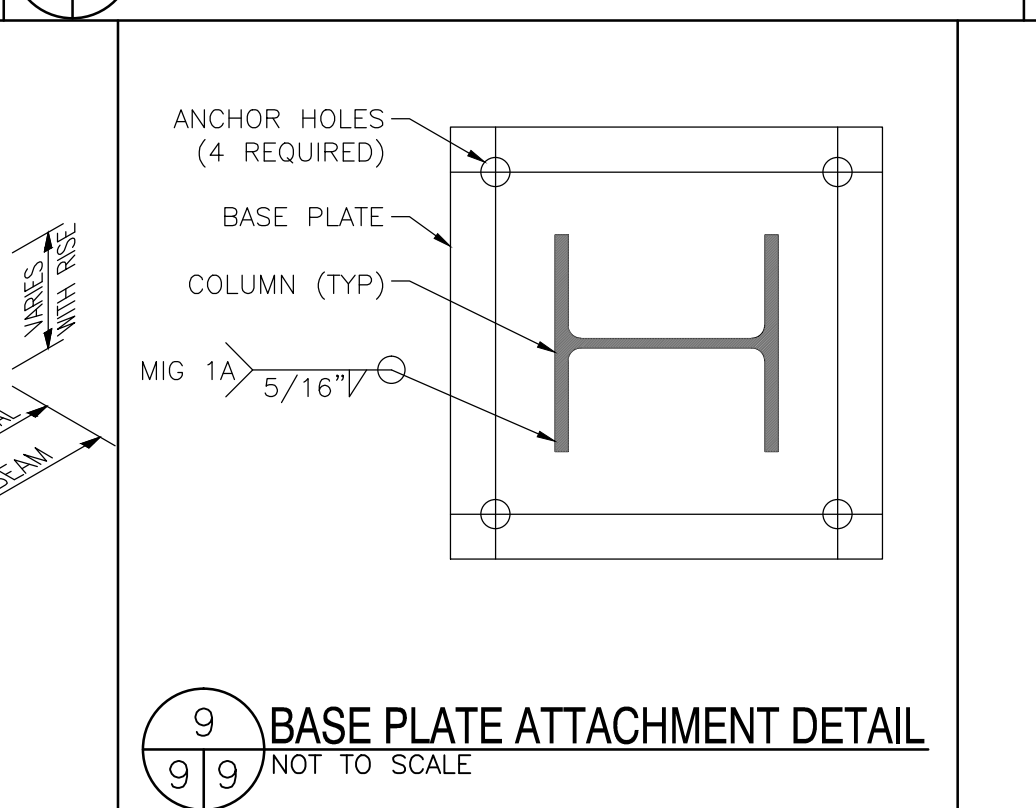
6 RAIL RISER ATTACHMENT DETAIL
NOT TO SCALE



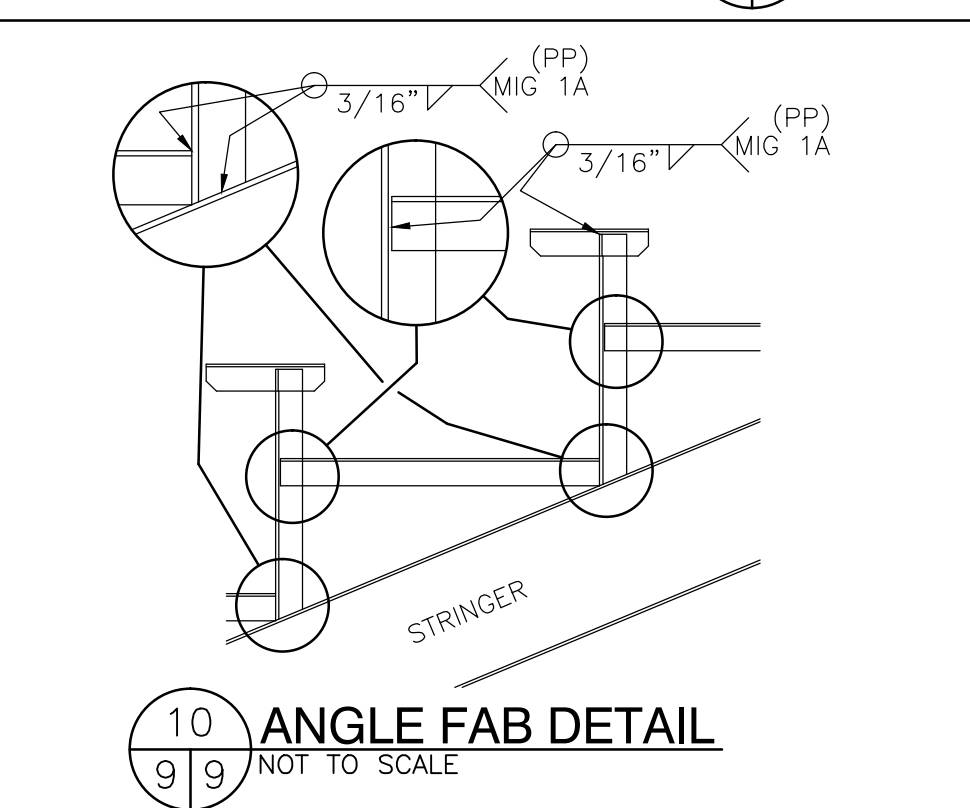
7 END CAP INSTALLATION DETAIL
NOT TO SCALE



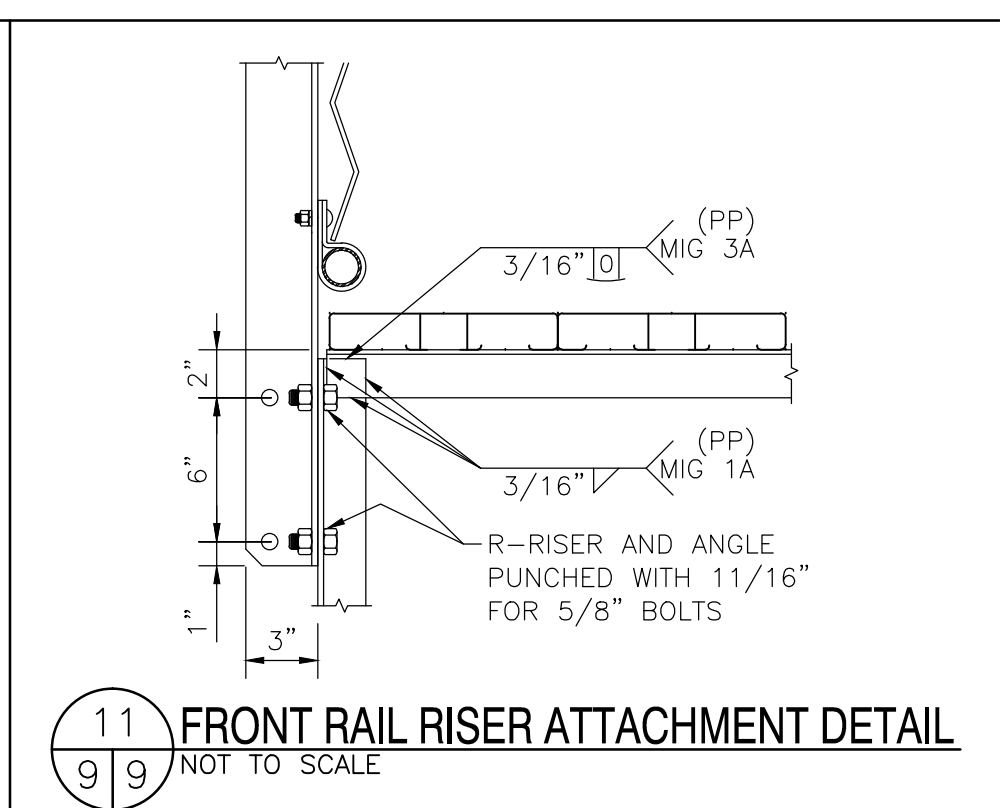
8 STRINGER CLIP DETAIL
NOT TO SCALE



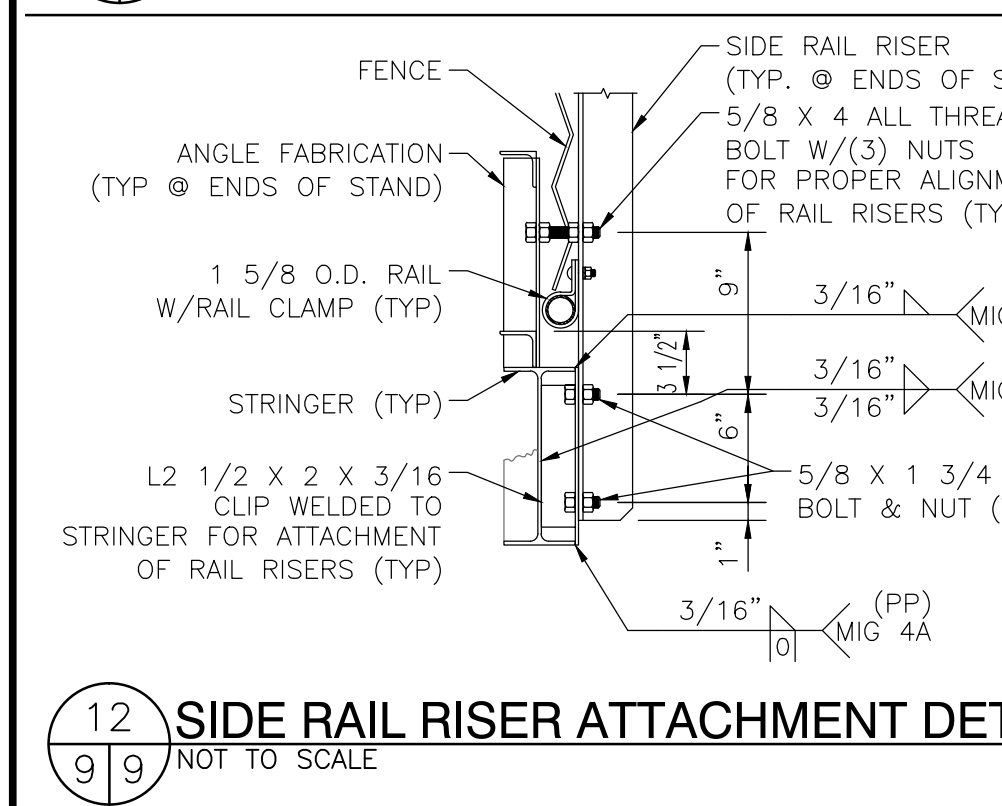
9 BASE PLATE ATTACHMENT DETAIL
NOT TO SCALE



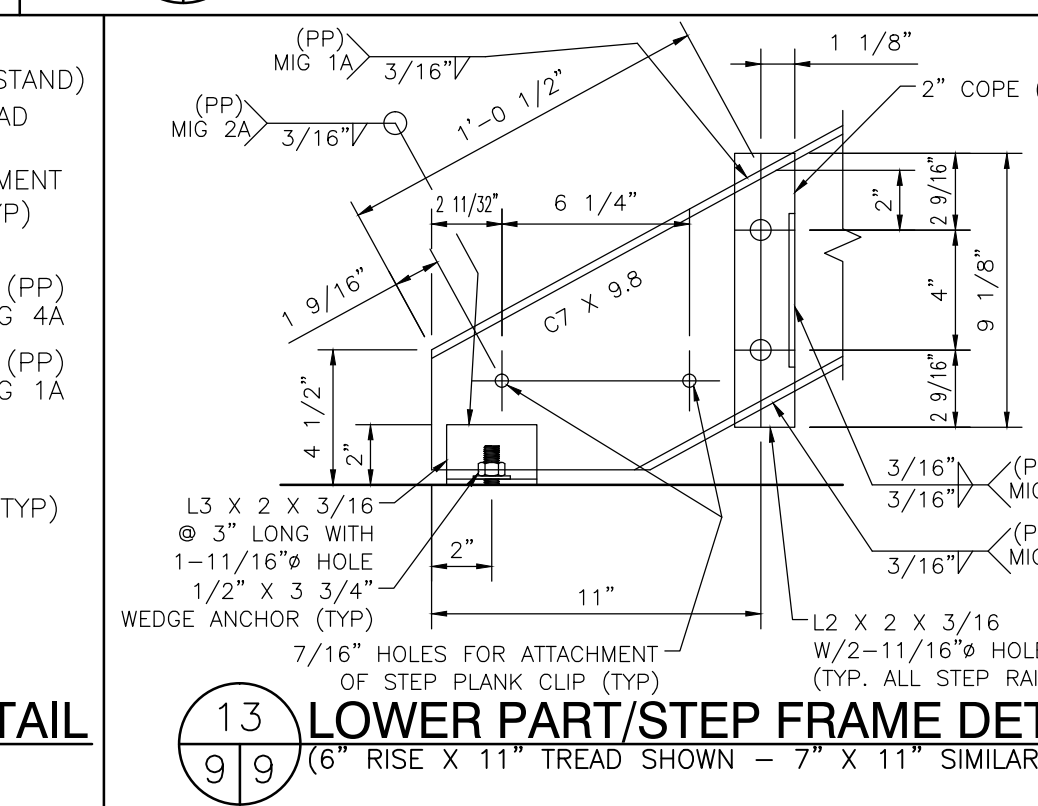
10 ANGLE FAB DETAIL
NOT TO SCALE



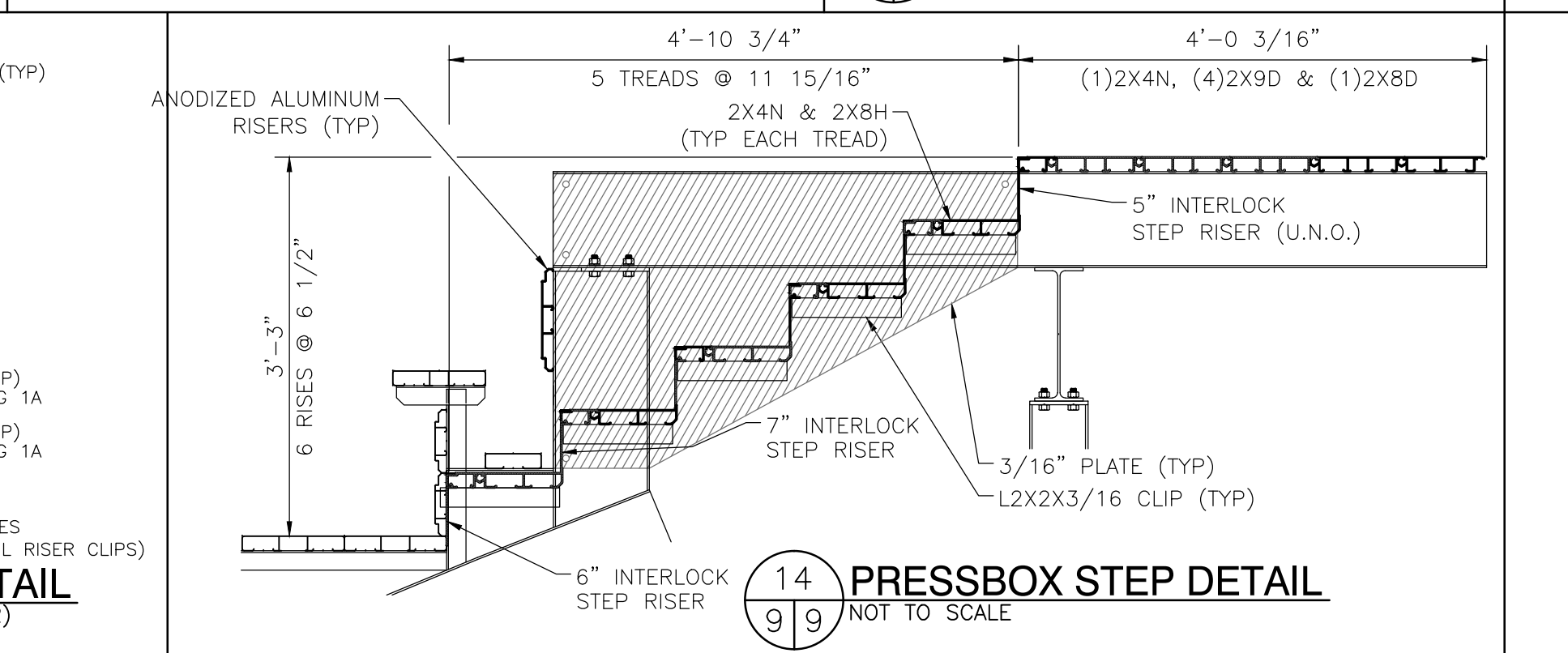
11 FRONT RAIL RISER ATTACHMENT DETAIL
NOT TO SCALE



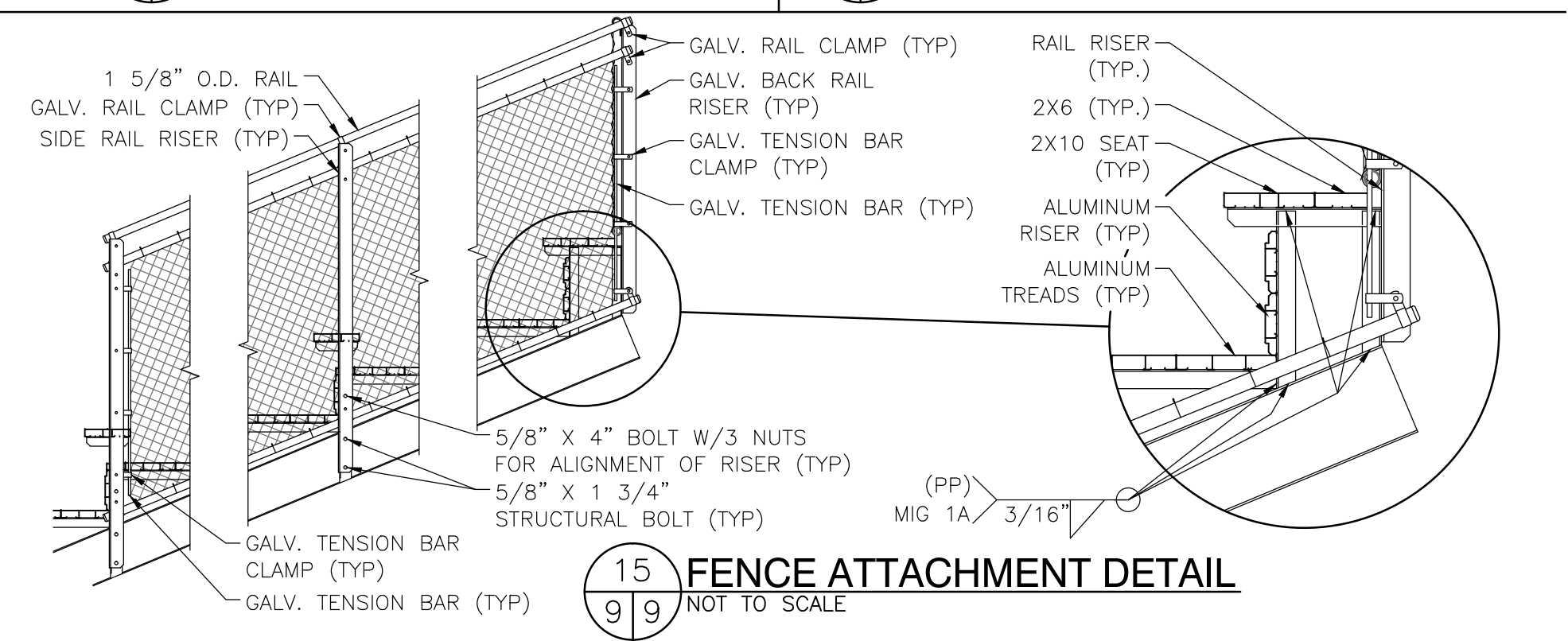
12 SIDE RAIL RISER ATTACHMENT DETAIL
NOT TO SCALE



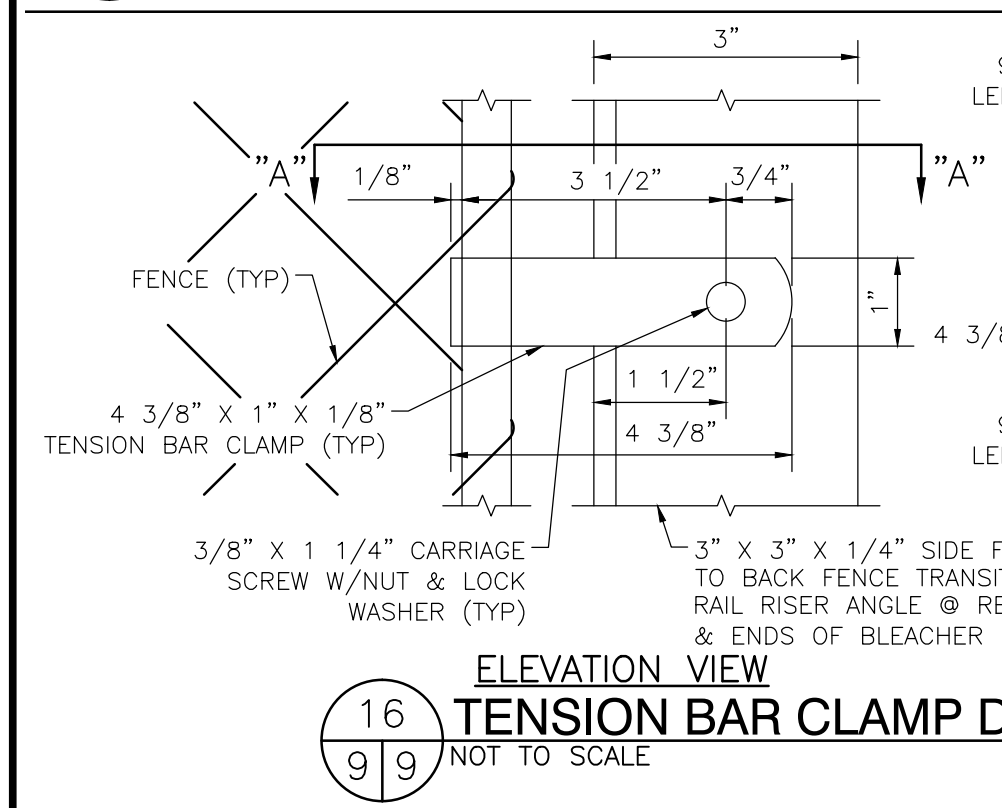
13 LOWER PART/STEP FRAME DETAIL
(6\"/>



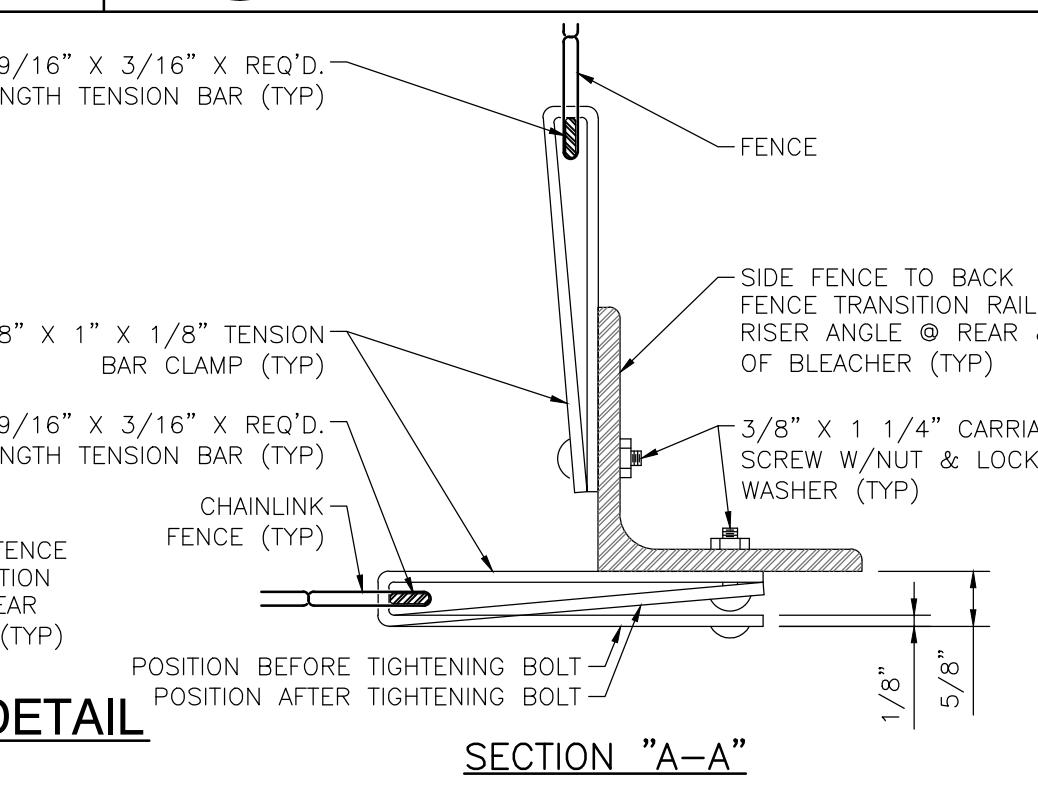
14 PRESSBOX STEP DETAIL
NOT TO SCALE



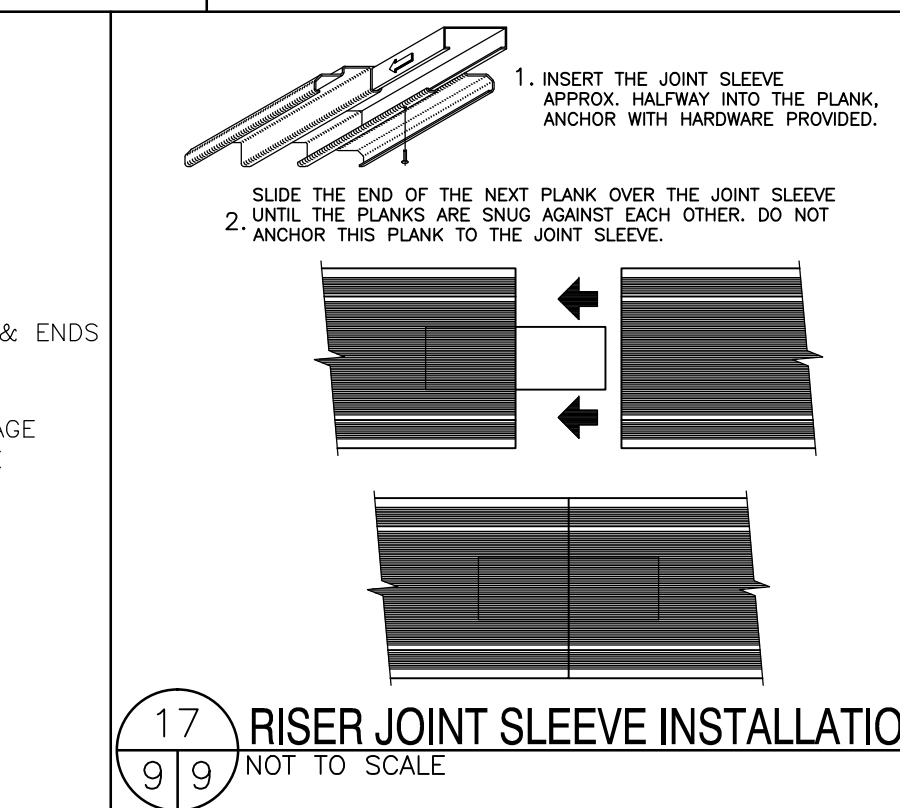
15 FENCE ATTACHMENT DETAIL
NOT TO SCALE



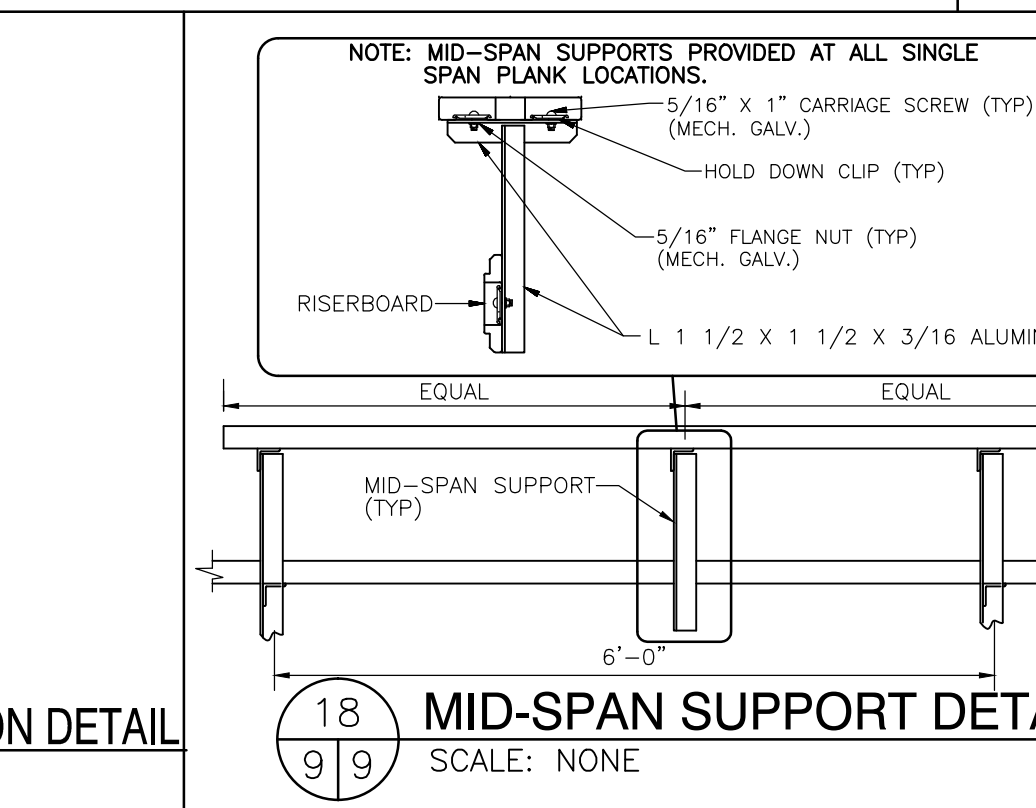
16 TENSION BAR CLAMP DETAIL
NOT TO SCALE



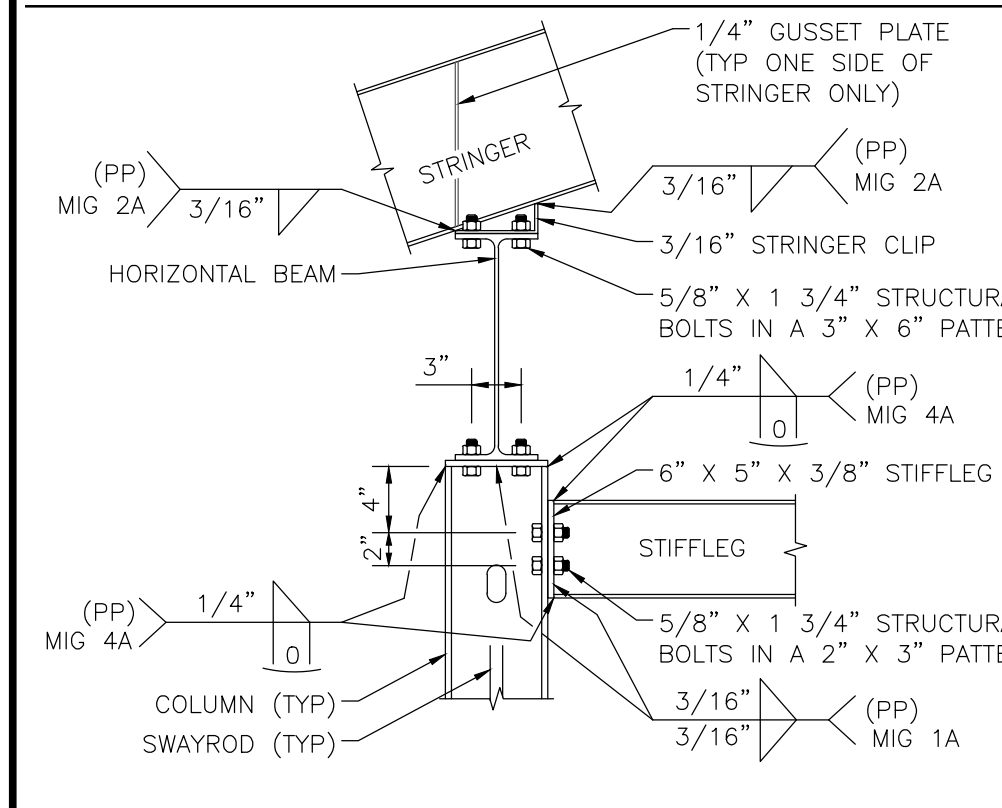
17 RISER JOINT SLEEVE INSTALLATION DETAIL
NOT TO SCALE



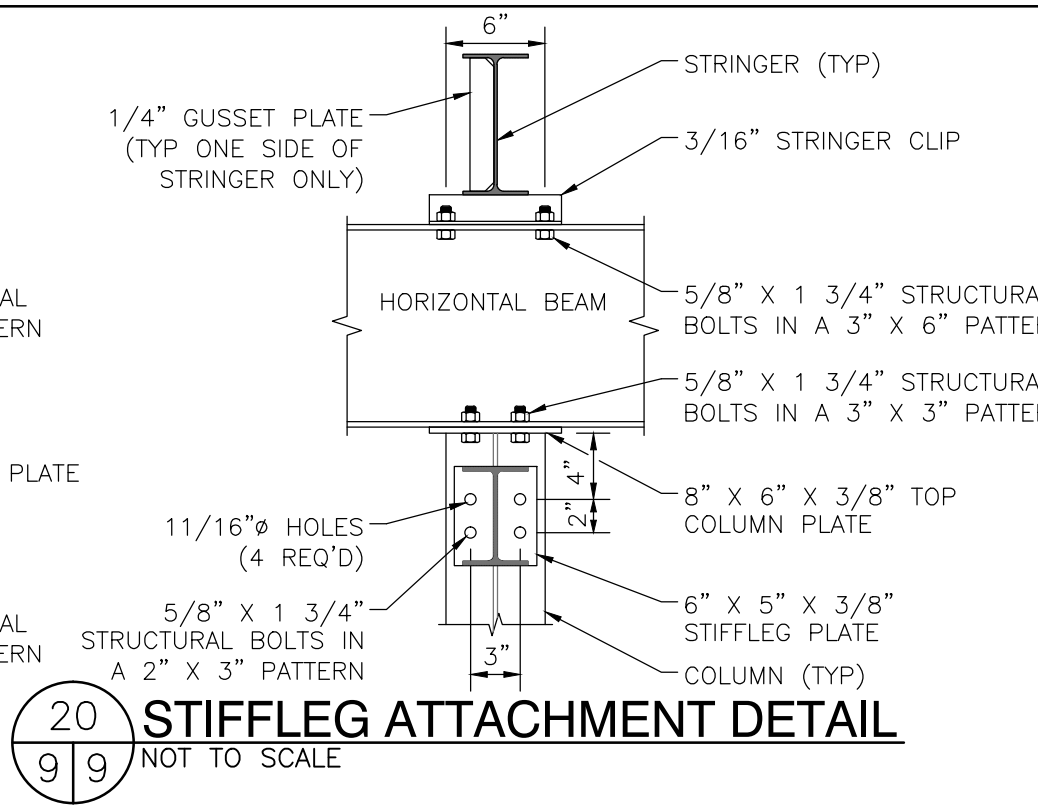
18 MID-SPAN SUPPORT DETAIL
SCALE: NONE



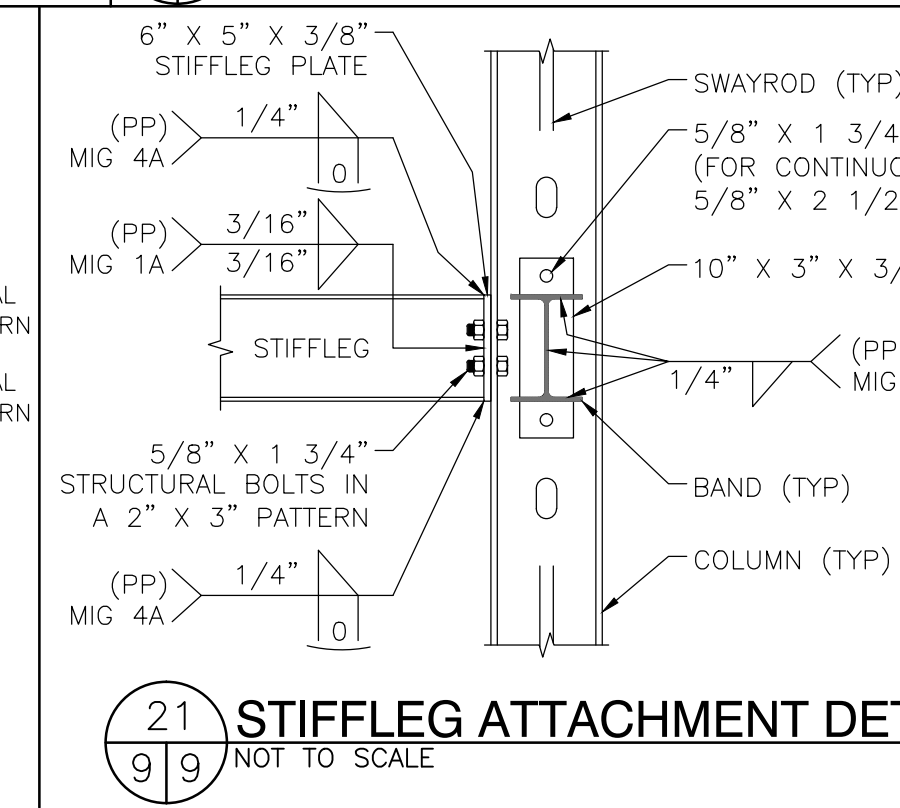
19 PRESSBOX BASE DETAIL
NOT TO SCALE



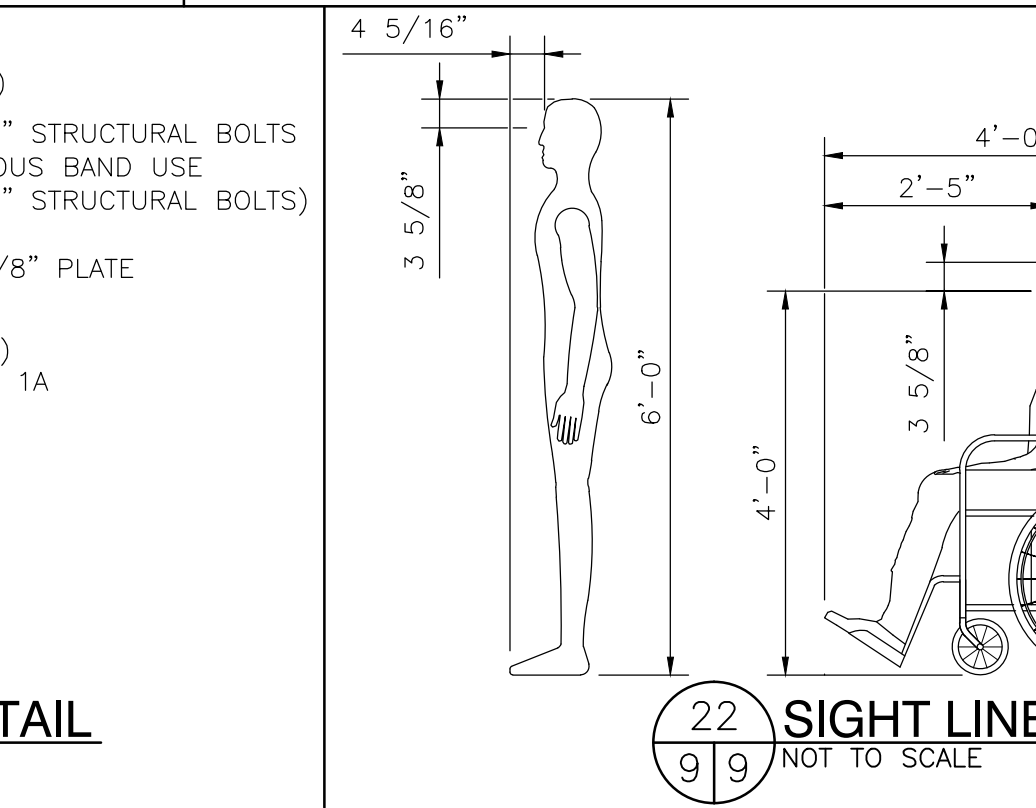
20 STIFFLEG ATTACHMENT DETAIL
NOT TO SCALE



21 STIFFLEG ATTACHMENT DETAIL
NOT TO SCALE



22 SIGHT LINE PARAMETERS
NOT TO SCALE



23 STEP RISERS @ BOTTOM OF EXIT STEPS
NOT TO SCALE

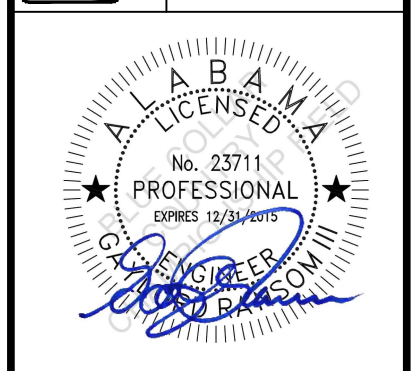
DETAIL NUMBER 110
SHEET SHOWN ON SHEET CUT FROM

BROOKS RANSOM ASSOCIATES
ARCHITECTS
1000 UNIVERSITY BLVD., SUITE 100
FOLLY, ALABAMA 36504
PH: (559)449-8444 • FAX: (559)449-8404

THIS DRAWING AND ALL INFORMATION THEREIN IS THE PROPERTY OF BROOKS RANSOM INC. AND SOUTHERN BLEACHER COMPANY. IT MAY NOT BE REPRODUCED OR TRANSMITTED IN ANY FORM OR BY ANY MEANS, ELECTRONIC OR MECHANICAL, WITHOUT THE WRITTEN CONSENT OF BOTH BROOKS RANSOM INC. OR SOUTHERN BLEACHER COMPANY. THE USER OF THIS DRAWING SHALL BE RESPONSIBLE FOR OBTAINING ALL NECESSARY PERMITS AND FOR PROTECTING UNDER U.S. AND INTERNATIONAL COPYRIGHT LAW.

PO Box One, Graham, Texas 76450
801 Fifth Street
Phone: (940)549-0733 Fax: (940)549-1365

Southern BLEACHER COMPANY
GRANDSTANDS • BLEACHERS • STADIUMS
Established 1946



GENERAL DETAILS

BLUE COLLAR DESTINATIONS
B.C. COUNTRY-CHAMPIONSHIP FIELD
FOLEY, ALABAMA

REV	DATE	DESCRIPTION	DRAWN	CHECKED
1	6/16/15		CF	EM/DR

JOB NUMBER **15174**

SHEET **9** OF **9**

22" X 34" (11x17 = 1/2" indicated scale)