

NEW ELEMENTARY SCHOOL

FOR THE

JONES COUNTY BOARD OF EDUCATION

LOCAL EFFORT NO. 6841-309

- ARCHITECT

DUNWODY BEELAND & HENDERSON ARCHITECTS INC.
484 MULBERRY STREET MACON, GEORGIA

CONSULTANTS

- MECHANICAL, PLUMBING AND ELECTRICAL

NOTTINGHAM BROOK & PENNINGTON
1291 JEFFERSON TERRACE MACON, GEORGIA

- STRUCTURAL

LINDSEY & RITTER
423 PINE AVENUE ALBANY, GEORGIA

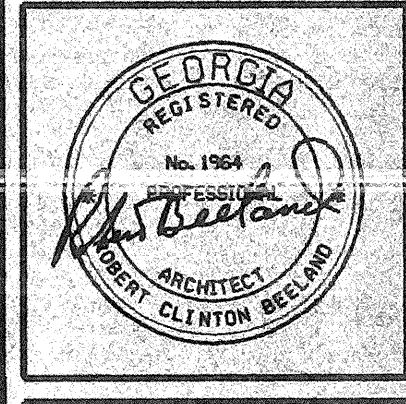
- CIVIL

TRIBBLE & RICHARDSON
1875 RIVERSIDE DRIVE MACON, GEORGIA

SET NO
DATE: MARCH 11, 1996
REVISED: AUGUST 1, 1996

AS-BUILT

AS-BUILT DRAWINGS



JOB TITLE

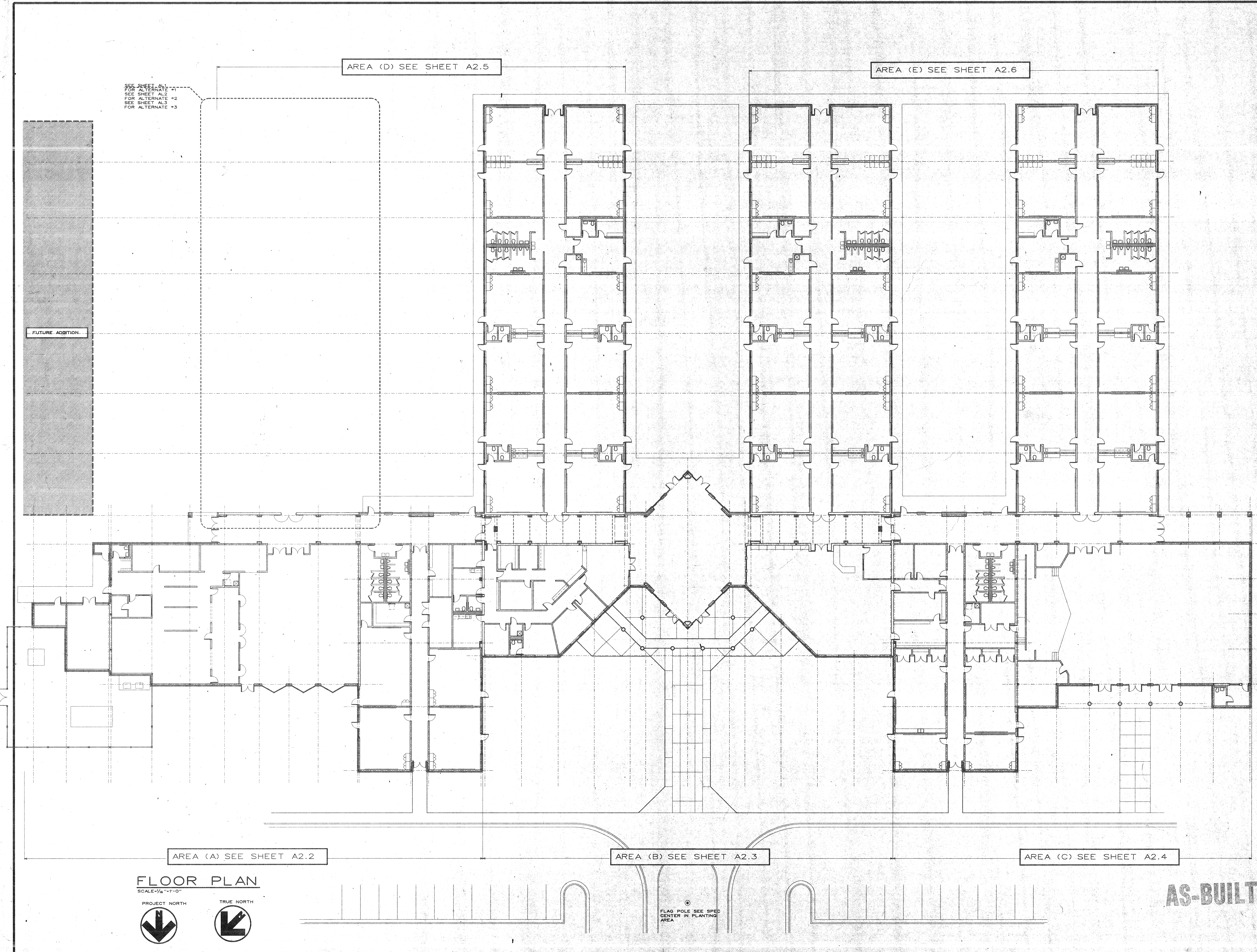
**NEW ELEMENTARY SCHOOL
 FOR
 JONES COUNTY BOARD OF EDUCATION**

REVISIONS

*1	08/01/98
*2	9/16/98 ADDENDUM

SHEET TITLE
FLOOR PLAN

Drawn	Checked
Proj no. 9508	Date 03/11/98
Cadd no. 9508p21	



SEE SHEET A1.1
 FOR ALTERNATE #1
 SEE SHEET A1.2
 FOR ALTERNATE #2
 SEE SHEET A1.3
 FOR ALTERNATE #3

FUTURE ADDITION

AREA (D) SEE SHEET A2.5

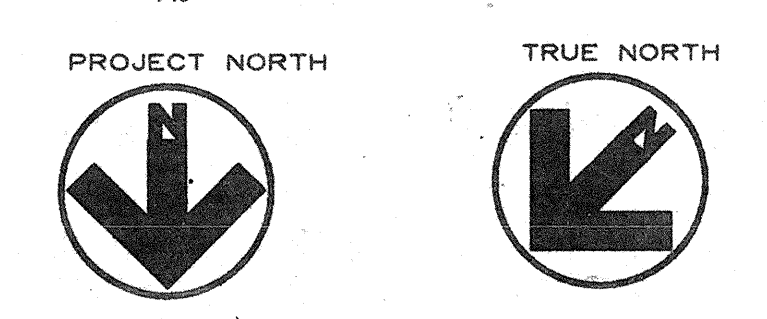
AREA (E) SEE SHEET A2.6

AREA (A) SEE SHEET A2.2

AREA (B) SEE SHEET A2.3

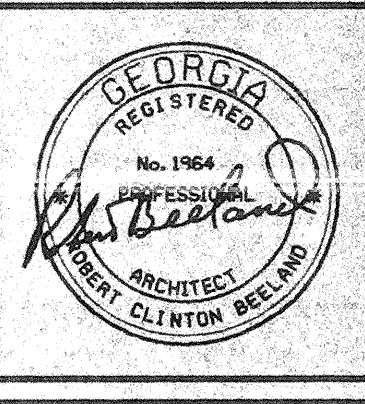
AREA (C) SEE SHEET A2.4

FLOOR PLAN
 SCALE-1/8"=1'-0"



FLAG POLE SEE SPEC
 CENTER IN PLANTING
 AREA

AS-BUILT



JOB TITLE

NEW ELEMENTARY SCHOOL FOR JONES COUNTY BOARD OF EDUCATION

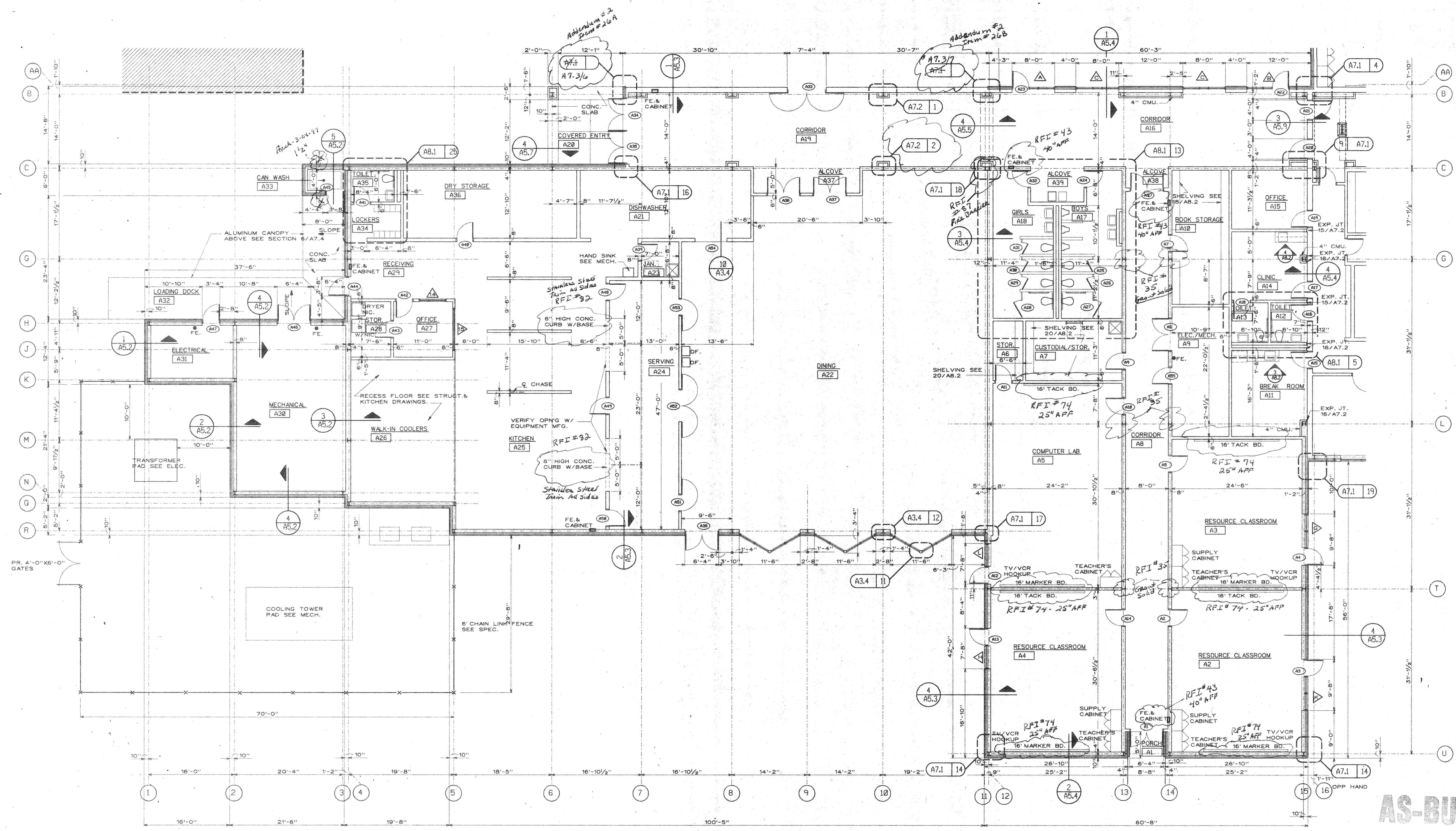
REVISIONS	
*1	08/01/98

SHEET TITLE

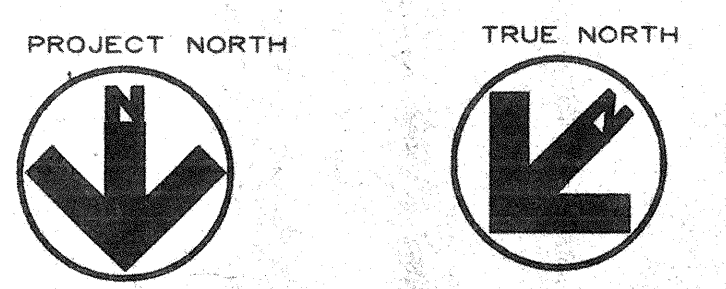
FLOOR PLAN AREA (A)

Drawn	Checked
9508	03/11/98
Cadd no.	9508a22

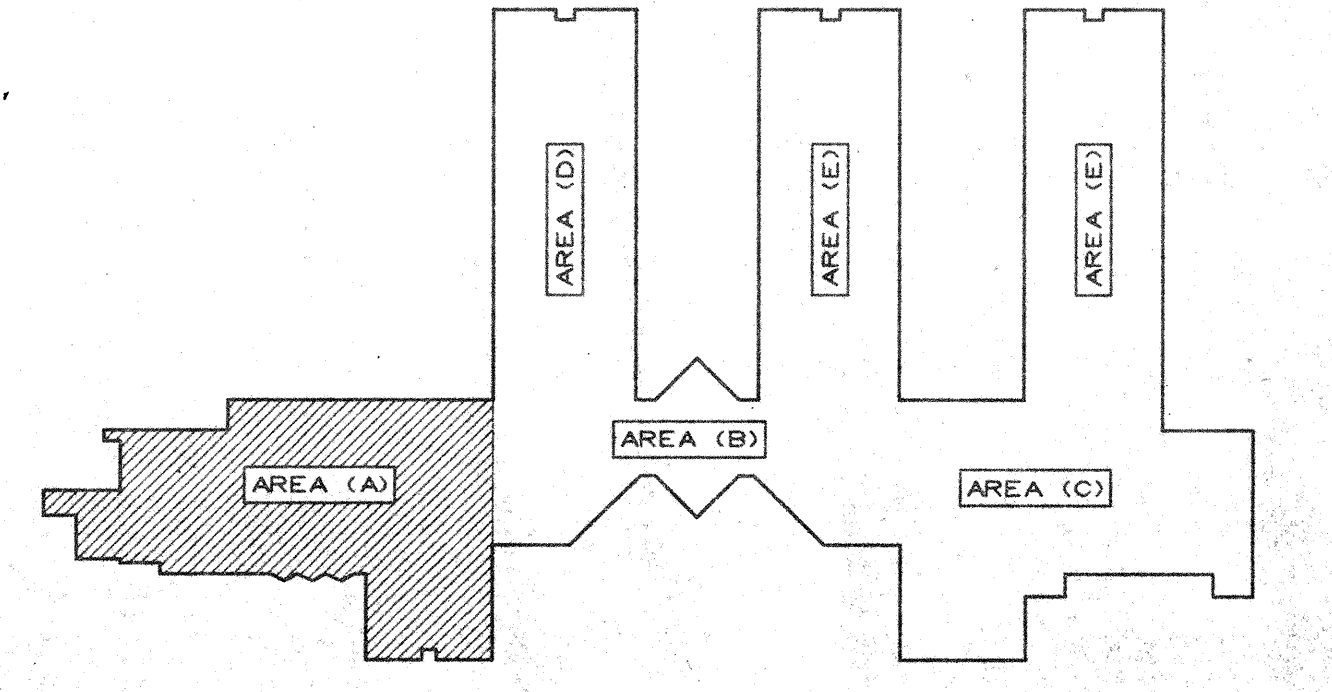
A-2.2



FLOOR PLAN AREA (A)
 SCALE: 1/4" = 1'-0"



- NOTES:
- 1- SEE REFLECTED CLG. PLAN FOR PARTITION HEIGHTS AND FIRE RATINGS.
 - 2- ALL INTERIOR PARTITIONS ARE CMU, UNLESS OTHERWISE NOTED.
 - 3- SEE SHEET A4.1 FOR EXTERIOR MASONRY CONTROL JOINT LOCATIONS.
 - 4- SEE SHEET A8.2 FOR SUPPLY & TEACHER CABINETS.



KEY PLAN

AS-BUILT