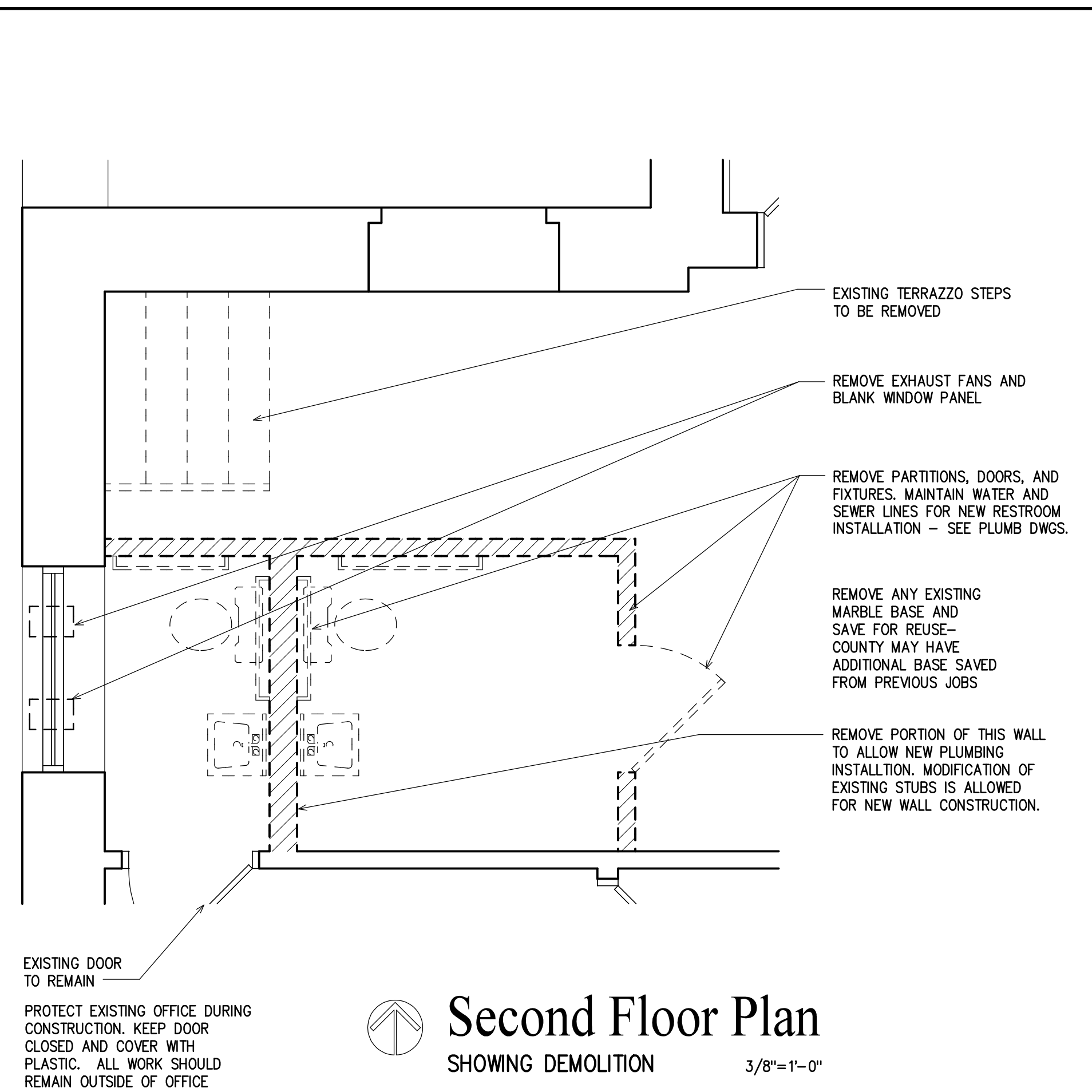
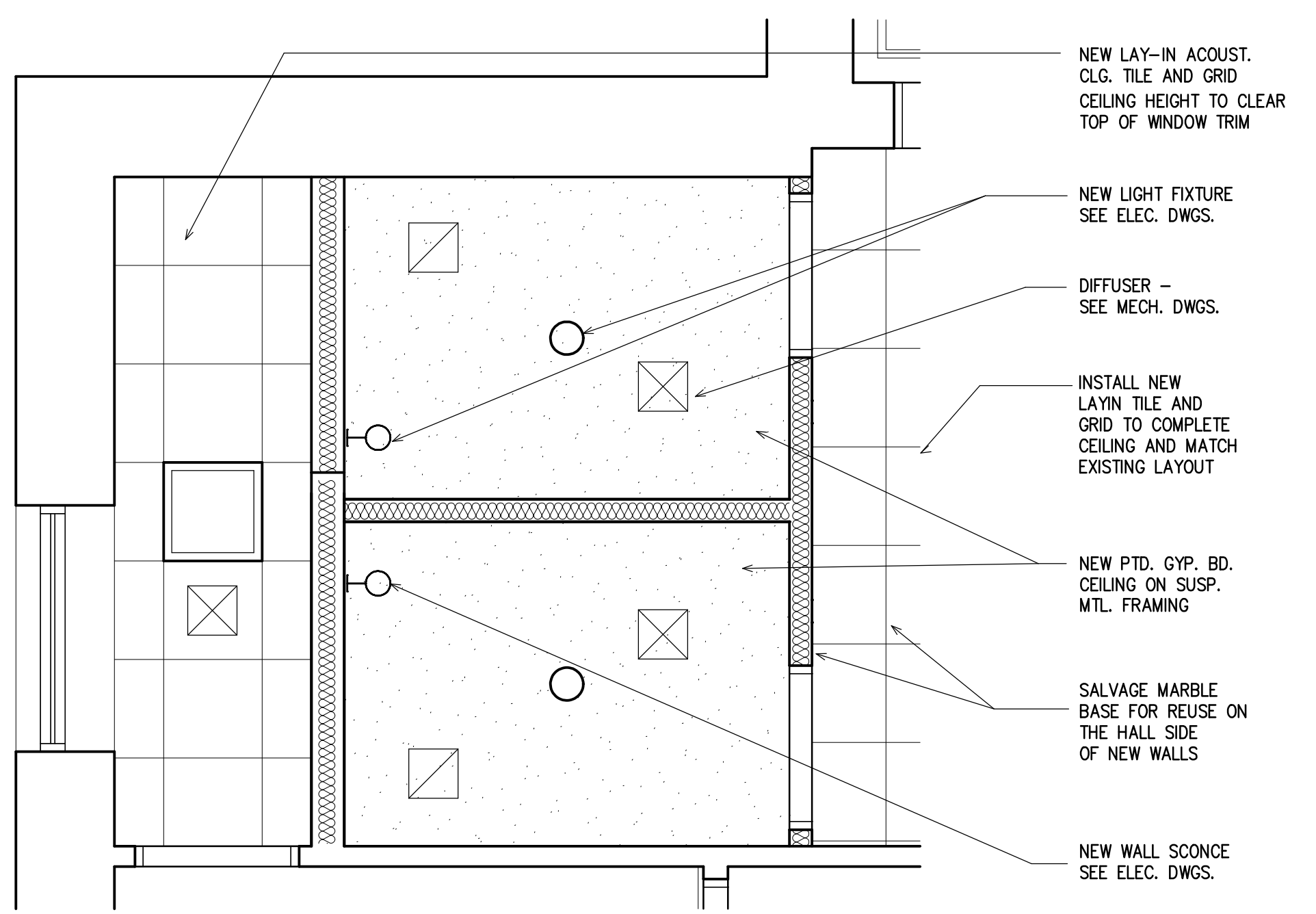


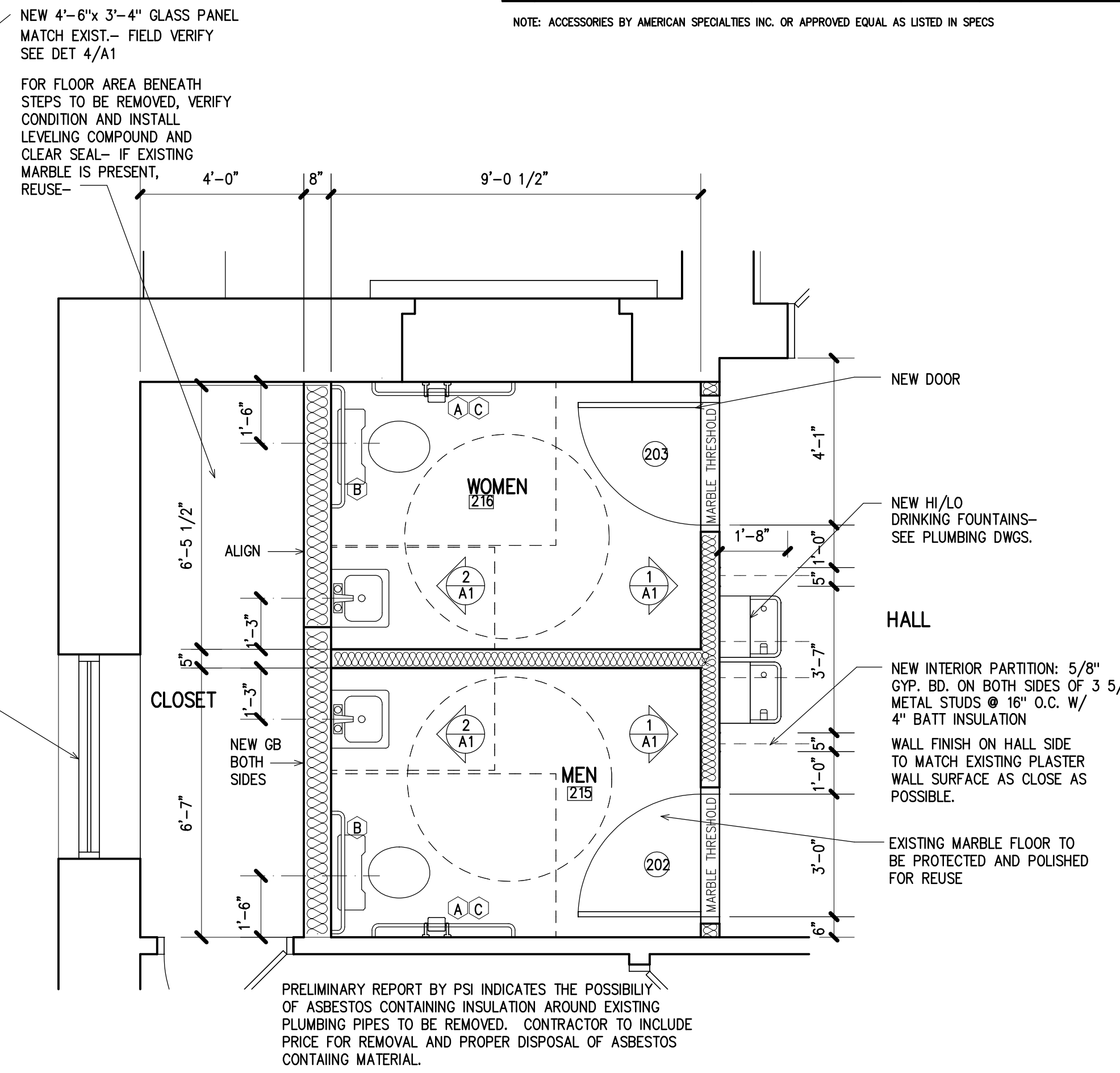
FINISH SCHEDULE									
ROOM NO.	FINISH	CARPET	FLOOR	BASE	TRIM	WALLS	CLG	REMARKS	
	ROOM NAME								
215	RESTROOM								RESTORE EXISTING MARBLE
216	RESTROOM								RESTORE EXISTING MARBLE
	CLOSET								NEW PAINT ALL WALLS
	HALL								NEW FINISHES AT IMPACTED AREA

* NOTE: ALL ROOMS NOT LISTED TO REMAIN AS IS.



TOILET ACCESSORIES SCHEDULE			
MK.	DESCRIPTION	MOUNTING HEIGHT	SPECIFICATION REMARKS
A	TOILET TISSUE DISPENSER	CENTER 19" A.F.F.	0897GAL
B	STAINLESS STEEL GRAB BAR	CENTER 33" A.F.F.	3800-36 1 1/2" DIA.x36" LONG
C	STAINLESS STEEL GRAB BAR	CENTER 33" A.F.F.	3800-42 1 1/2" DIA.x42" LONG

NOTE: ACCESSORIES BY AMERICAN SPECIALTIES INC. OR APPROVED EQUAL AS LISTED IN SPECS



Quina Grundhoefer Architects

400 West Romana Street Pensacola, FL 32502
850 433-5575 Fax 850 433-5366
E-mail: qg@qgarchitects.com

DEMO FLOOR PLAN LEGEND

- EXISTING WALL TO REMAIN
- EXISTING WALL TO BE REMOVED
- EXISTING DOOR TO BE REMOVED
- NEW GLASS WINDOW PANEL
- EXIST. WINDOW PANEL TO BE REMOVED

DEMO RCP LEGEND

- EXISTING LIGHT FIXTURE TO REMAIN
- EXISTING LIGHT FIXTURE TO BE REMOVED
- EXISTING DIFFUSER TO BE REMOVED SEE MECHANICAL DWGS
- EXIST. CEILING SYSTEM TO BE REMOVED

NEW WORK LEGEND

- EXISTING PARTITION
- NEW INTERIOR PARTITION: 5/8" GYP. BD. ON BOTH SIDES OF 3 5/8" (OR AN) METAL STUDS @ 16" O.C. W/ 4" BATT INSULATION
- NEW GLASS WINDOW PANEL
- NEW DOOR

NEW WORK RCP LEGEND

- RECESSED DOWNLIGHT- SEE ELEC. DWGS.
- WALL SCONCE- SEE ELEC. DWGS.
- 2x2 FLOOR. LIGHT FIXTURE - SEE ELEC. DWGS.
- DIFFUSER - SEE MECH. DWGS.
- NEW ACOUSTICAL LAY-IN CEILING
- NEW PTD. GYP. BD. CLG.

LIST OF DRAWINGS

- A1 Architectural Plans
- P1 Plumbing Plans
- M1 Mechanical Plans
- E1 Electrical Plans

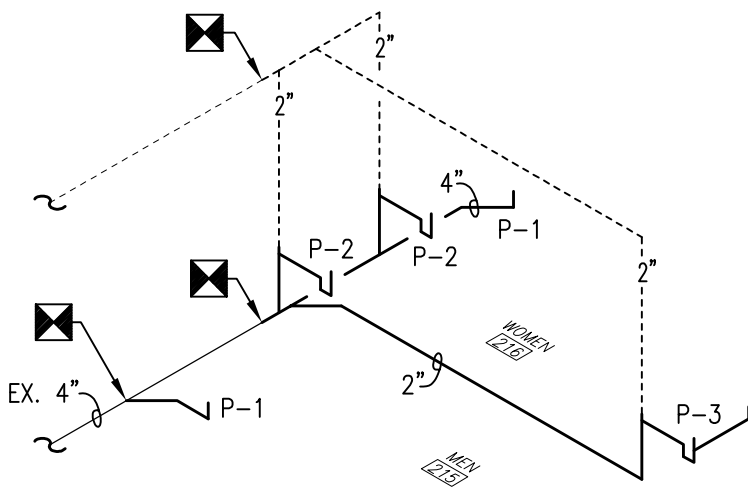
Project
**Old Courthouse
2nd Floor Restroom
ADA Renovations**
Pensacola, Florida

Date:
1/25/17
Project No.
1307C

Sheet No.
A1

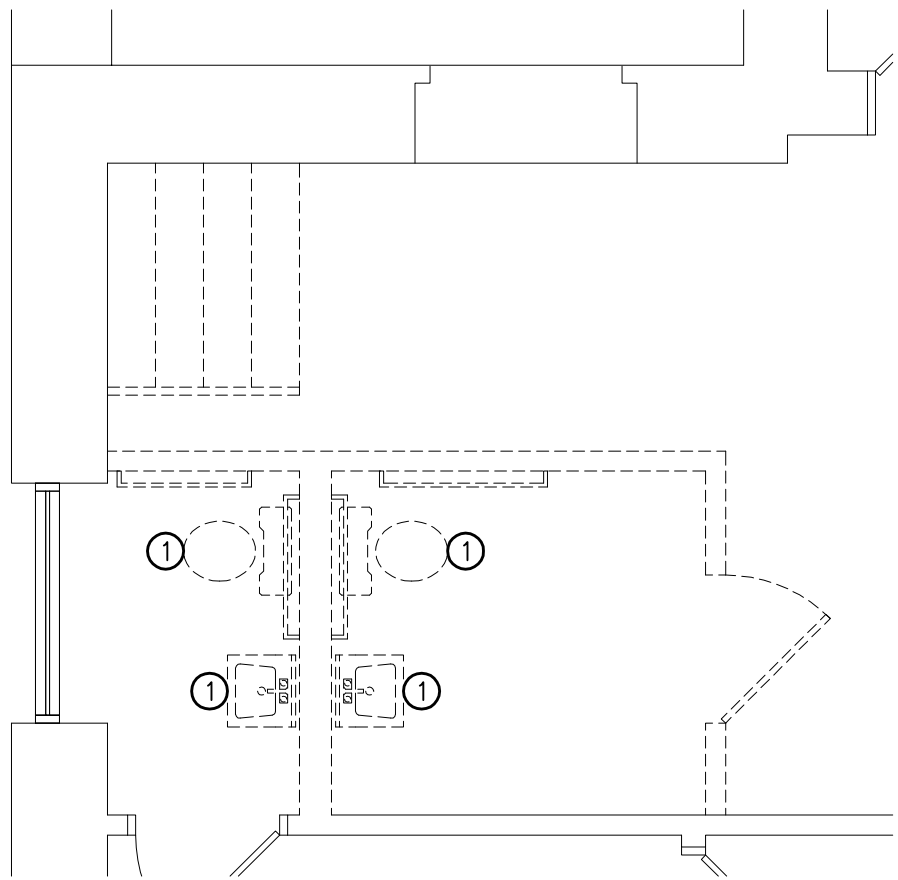
PLUMBING FIXTURE CONNECTION SCHEDULE					
MARK	FIXTURE	CONNECTIONS			DESCRIPTION
		WASTE	CW	HW	
P-1	WATER CLOSET (HANDICAPPED)	4"	1"	--	17" HIGH ELONGATED BOWL, FLOOR MOUNTED, FLOOR OUTLET, FLUSH VALVE TYPE. PROVIDE WHITE OPEN FRONT SEAT LESS COVER, FLUSH VALVE, AND FLEXIBLE SUPPLY WITH STOP. INSTALL PER ADA REQUIREMENTS.
P-2	LAVATORY (HANDICAPPED)	1 1/2"	1/2"	1/2"	WALL HUNG TYPE. PROVIDE WITH SINGLE LEVER FAUCET, GRID WASTE, 17 GA P-TRAP, FLEXIBLE SUPPLIES WITH STOPS, TRAP INSULATION KIT, AND FLOOR MOUNTED CONCEALED ARM CARRIER. INSTALL PER ADA REQUIREMENTS.
P-3	WATER COOLER (HANDICAPPED)	1 1/2"	1/2"	--	DUAL HEIGHT, BARRIER FREE, WALL MOUNTED TYPE WITH ROUGH BRASS STOPS, 17 GA. P-TRAP, AND WALL HANGER. INSTALL PER ADA REQUIREMENTS.

NOTE: FIXTURES SHALL BE WHITE AND FAUCETS SHALL BE POLISHED CHROME UNLESS OTHERWISE INDICATED. REFER TO SPECIFICATIONS FOR ADDITIONAL INFORMATION. ALL HANDICAPPED FIXTURES SHALL BE ADA COMPLIANT AND INSTALLED PER ADA REQUIREMENTS. REFERENCE ARCHITECTURAL PLANS FOR INSTALLATION HEIGHTS. ALL DOMESTIC WATER PIPING ABOVE THE SLAB SHALL BE INSULATED INCLUDING PIPING INSIDE WALLS. PIPING SHALL NOT BE INSTALLED IN A MANNER IN WHICH CONTACT WITH MASONRY PRODUCTS IS ALLOWED.



SANITARY WASTE RISER
NOT TO SCALE

PLUMBING LEGEND	
EX	EXISTING
---	COLD WATER PIPING
----	HOT WATER PIPING
----	WASTE PIPING
----	VENT PIPING
⊠	CONNECT NEW TO EXISTING
⌋	P-TRAP



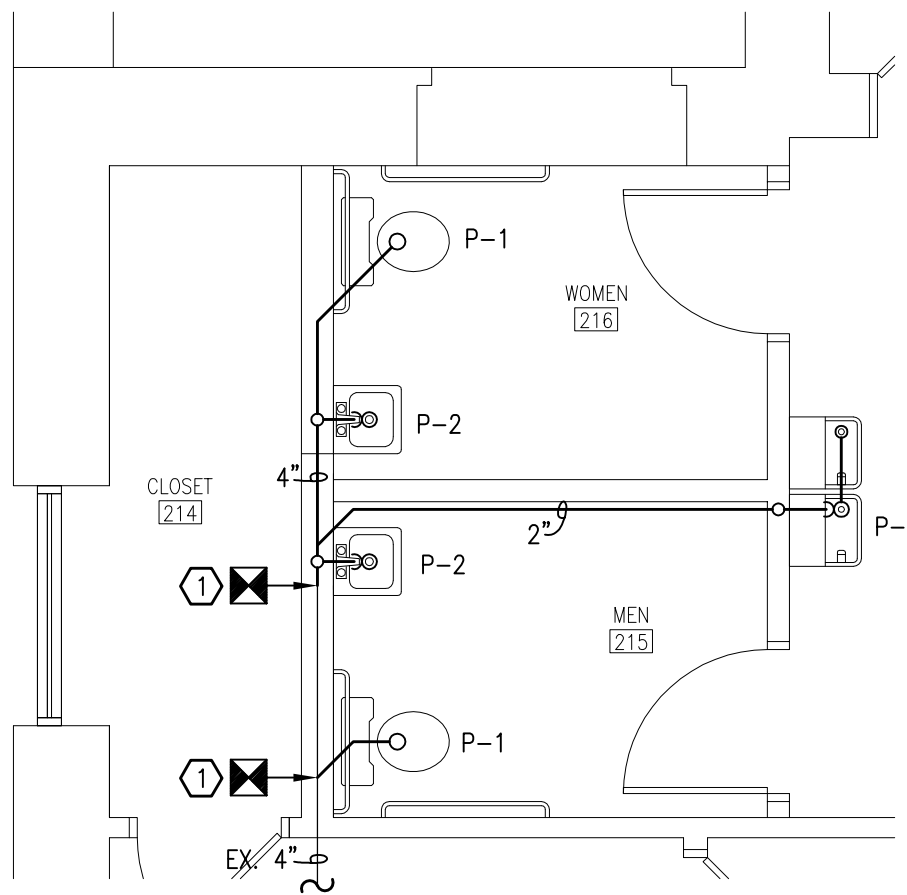
SECOND FLOOR PLUMBING DEMOLITION PLAN
SCALE: 1/4" = 1'-0"

PLUMBING DEMOLITION KEYNOTES

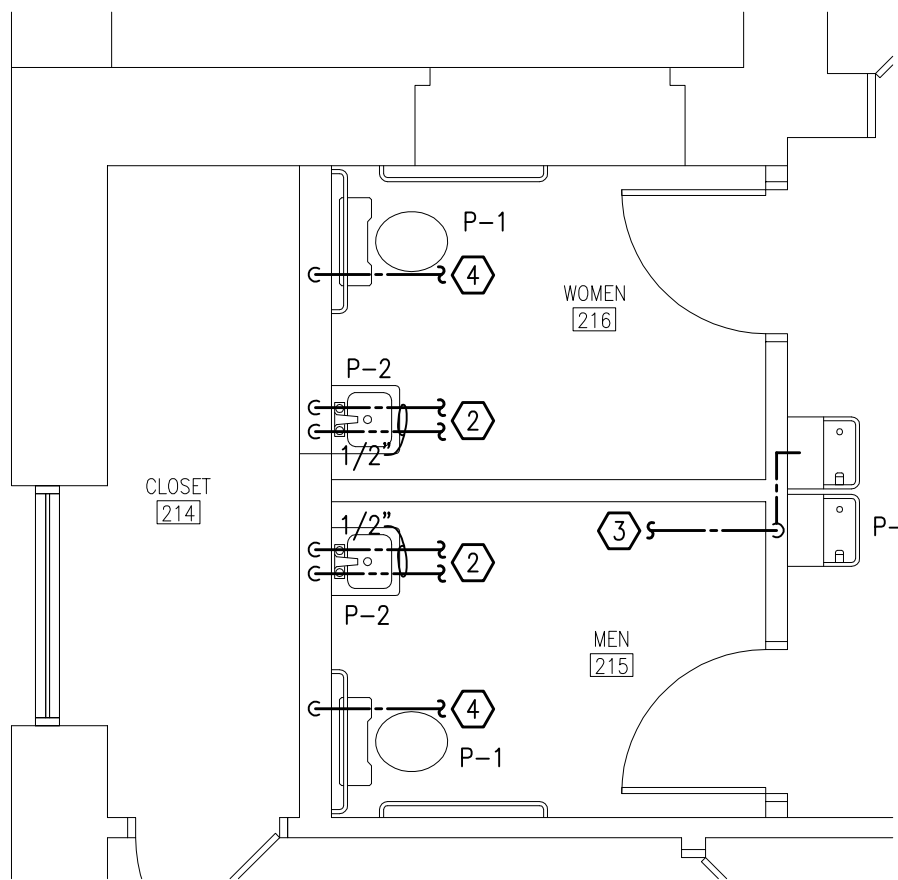
- ① EXISTING PLUMBING FIXTURE TO BE REMOVED COMPLETELY. ALL UTILITY PIPING FOR WASTE, WATER, AND VENT PIPING SHALL BE CAPPED AIR TIGHT OUTSIDE OF OCCUPIED SPACE (ABOVE CEILING, BELOW FLOOR, OR INSIDE WALLS). ANY WASTE PIPING NOT BEING REUSED SHALL BE REMOVED TO ACCOMMODATE NEW CONSTRUCTION, OTHERWISE, ABANDON IN PLACE. SEAL ABANDONED PIPING AIR TIGHT AND RODENT PROOF. PREPARE EXISTING WASTE, WATER, AND VENT PIPING FOR CONNECTION TO NEW WORK.

PLUMBING GENERAL NOTE

FIELD VERIFY LOCATION OF EXISTING SANITARY SEWER AND HOT AND COLD DOMESTIC WATER PIPING PRIOR TO BEGINNING WORK.



SECOND FLOOR SANITARY WASTE NEW WORK PLAN
SCALE: 1/4" = 1'-0"



SECOND FLOOR DOMESTIC WATER NEW WORK PLAN
SCALE: 1/4" = 1'-0"

PLUMBING NEW WORK KEYNOTES

- ① CONNECT NEW 4" SANITARY WASTE PIPING INTO EXISTING SANITARY WASTE PIPING.
② ROUTE NEW 1/2" HOT AND COLD WATER PIPING OVER AND CONNECT TO NEAREST HOT AND COLD WATER MAIN.
③ ROUTE NEW 1/2" COLD WATER PIPING OVER AND CONNECT TO NEAREST COLD WATER MAIN.
④ ROUTE NEW 1" COLD WATER PIPING OVER AND CONNECT TO NEAREST COLD WATER MAIN.

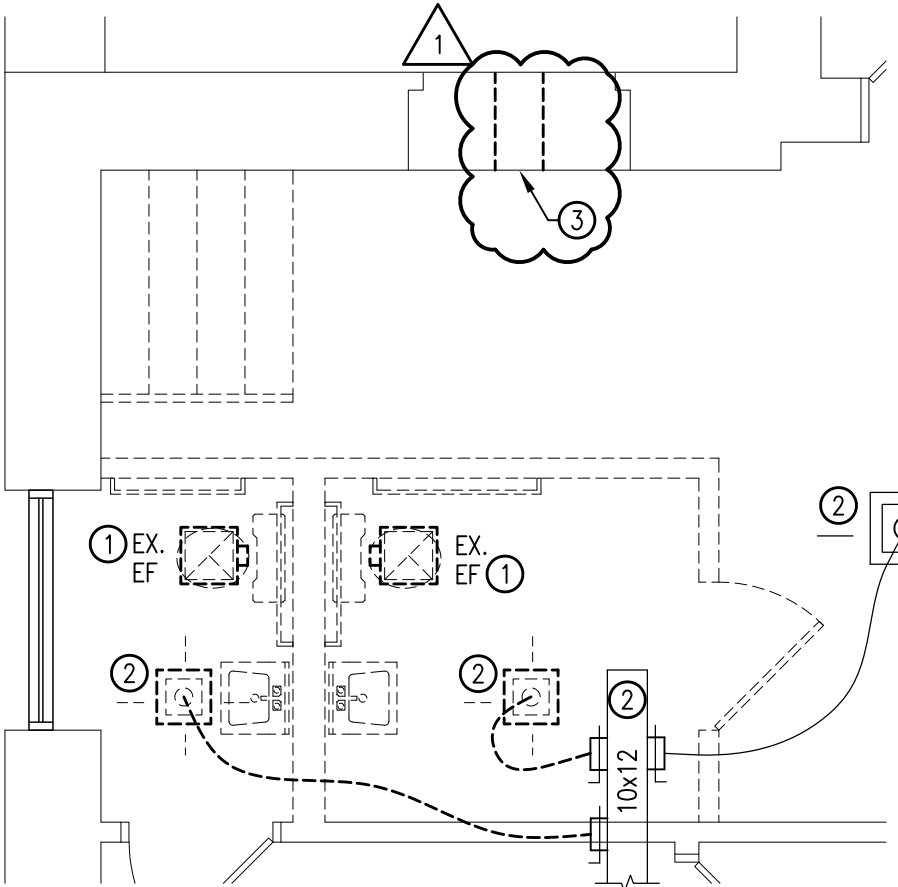
H.M. Yonge & Assoc., Inc. 16180
Consulting Engineers
100 EAST GARDEN STREET
PENSACOLA, FLORIDA 32502
PHONE (850) 454-2661
• CERTIFICATE OF AUTHORIZATION NO. 5254
• MECHANICAL ENGINEER: HOWARD M. YONGE, P.E. - FLORIDA REG. NO. 32093
• ELECTRICAL ENGINEER: SCOTT A. ADAMS, P.E. - FLORIDA REG. NO. 57949

Project
Old Courthouse
2nd Floor Restroom
ADA Renovations
Pensacola, Florida

Date:
01/25/17
Project No.
1307C

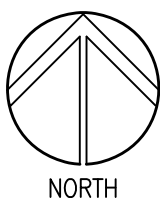
Sheet No.

P1



HVAC DEMOLITION KEYNOTES

- EXISTING BATHROOM CEILING MOUNTED EXHAUST FAN TO BE REMOVED WITH ASSOCIATED DUCTWORK. COORDINATE LIMITS OF DEMOLITION WITH NEW WORK PLAN. EXISTING EXHAUST DUCT DISCHARGE LOCATION SHALL BE REUSED FOR NEW WORK AND OTHERWISE SHALL BE SEALED AIR TIGHT WITH INSULATED SHEET METAL PANEL. SECURE PANEL IN PLACE WITH SHEET METAL SCREWS. COORDINATE DISCHARGE LOCATION WITH ARCHITECT AND ENGINEER PRIOR TO BEGINNING ANY WORK.
- EXISTING SUPPLY AIR BRANCH DUCTWORK TO REMAIN. FLEXIBLE BRANCH DUCT CONNECTIONS SHALL BE MODIFIED TO ACCOMMODATE NEW FLOOR PLAN LAYOUT. EXISTING AIR DEVICES SHALL BE REMOVED, CLEANED, PAINTED AND STORED FOR REUSE. AT CONTRACTOR'S OPTION NEW AIR DEVICES MAYBE INSTALLED THAT DUPLICATE THE REMOVED AIR DEVICES.
- EXISTING WALL TO BE MODIFIED FOR INSTALLATION OF NEW EXHAUST AIR DUCT. COORDINATE DEMOLITION REQUIREMENTS WITH NEW WORK PLAN.

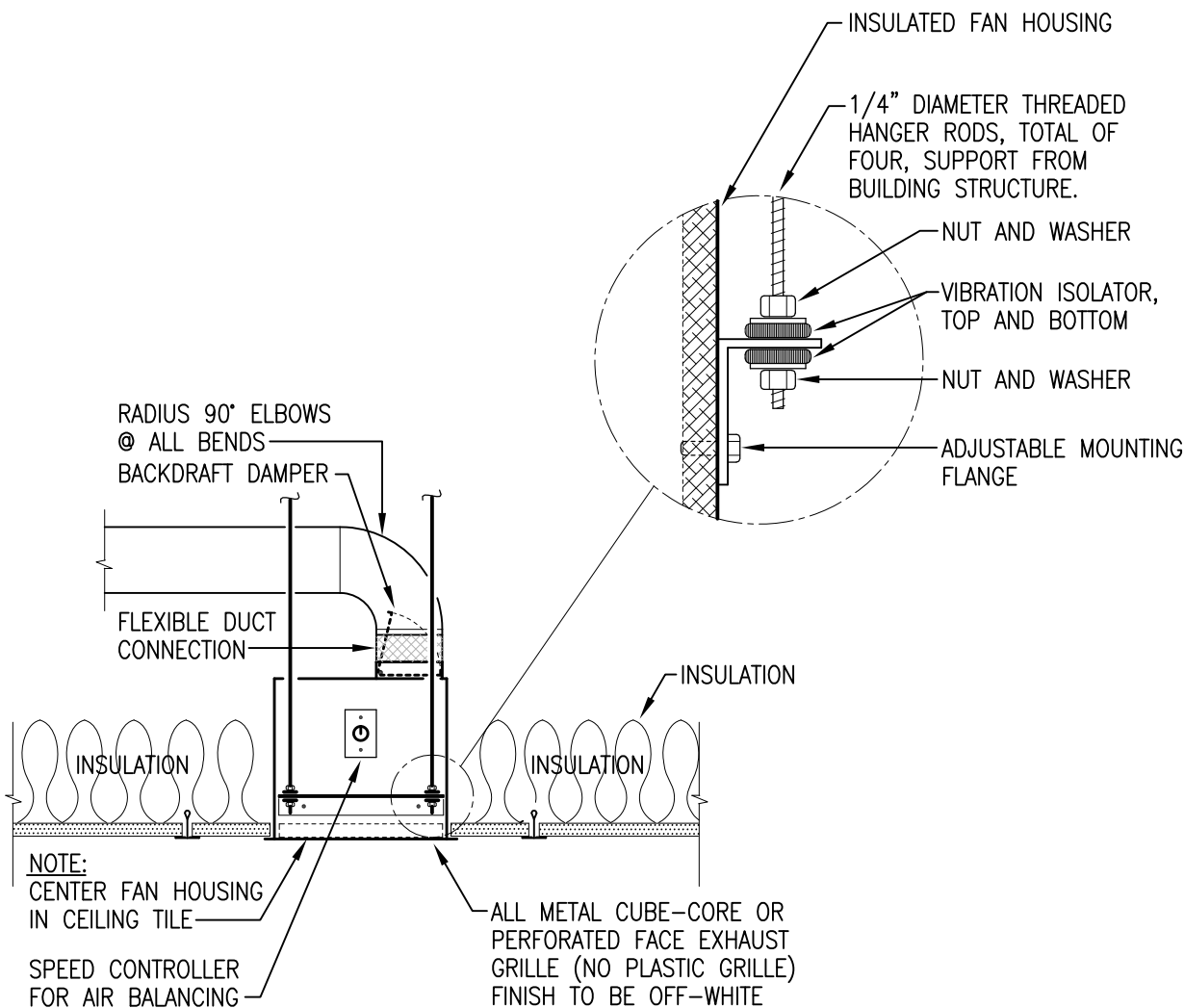


SECOND FLOOR HVAC DEMOLITION PLAN

SCALE: 1/4" = 1'-0"

FAN SCHEDULE													
MARK	TOTAL CFM	TSP. IN WC	MAX RPM	TYPE DRIVE	TYPE FAN	INTERLOCK WITH	MOTOR HP/WATTS	MAX SONES	ELECTRICAL DATA			FAN SERVICE	REMARKS
									VOLTS	Hz	PHASE		
EF#1	70	0.25	900	DIRECT	CEILING MOUNTED	WALL SWITCH	30 W	1.0	120	60	1	TOILET RM	PROVIDE WITH SPEED CONTROLLER.
EF#2	70	0.25	900	DIRECT	CEILING MOUNTED	WALL SWITCH	30 W	1.0	120	60	1	TOILET RM	PROVIDE WITH SPEED CONTROLLER.

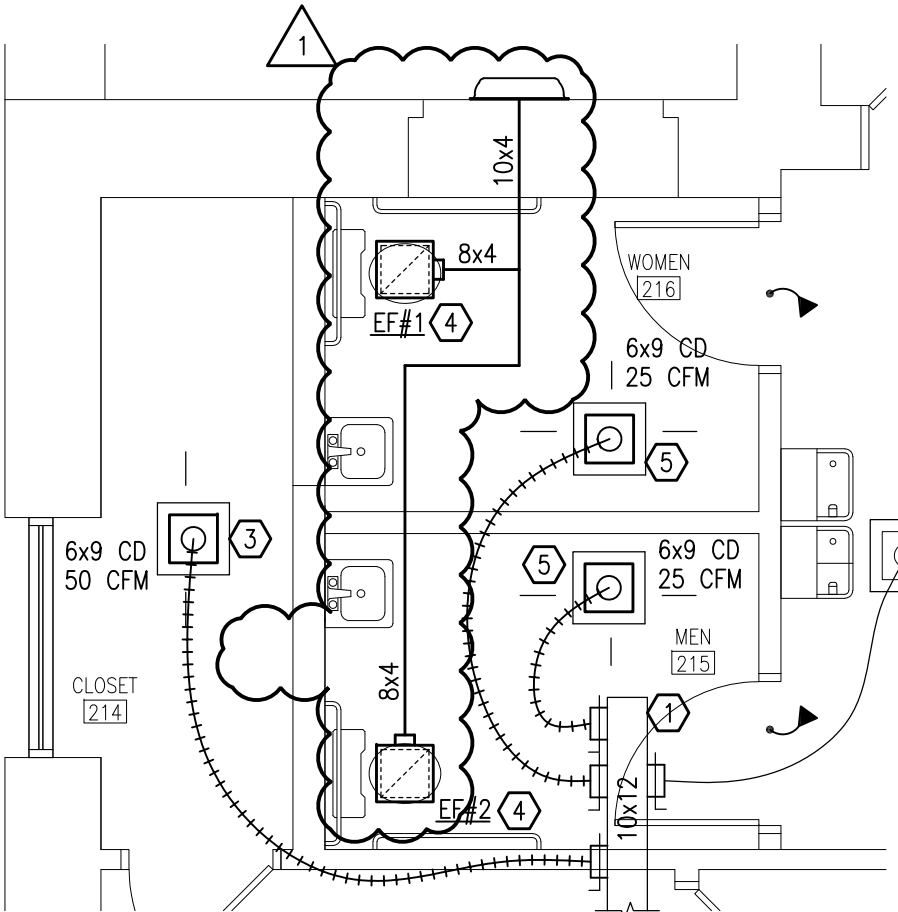
MECHANICAL LEGEND	
CD	CEILING DIFFUSER
CFM	CUBIC FEET PER MINUTE
EF	EXHAUST FAN
□	CEILING DIFFUSER WITH THROW INDICATION
□	EXHAUST/RETURN AIR DEVICE
W X H	DUCTWORK (DIMENSIONS: WIDTH X HEIGHT)
W X H	FLEX DUCT TAKE-OFF WITH AIR-SCOOP, SPIN-IN TAP AND BALANCING DAMPER
W X H	ELBOW WITH TURNING VANES
W X H	BULLHEAD TEE WITH TURNING VANES AND SPLITTER DAMPER
W X H	45° SHOE-FITTING TAKE-OFF
W X H	DUCT CONNECTION OVER AIR DEVICE
W X H	5/8" DOOR UNDERCUT



NOTE: SUPPORT RODS TO ROOF STRUCTURE - DO NOT SUPPORT FAN WITH CEILING SYSTEM

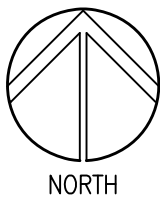
TYPICAL EXHAUST FAN DETAIL

NOT TO SCALE



HVAC NEW WORK KEYNOTES

- EXISTING SUPPLY AIR DUCT TO REMAIN. BRANCH DUCT SHALL BE MODIFIED TO ACCOMMODATE INSTALLATION OF NEW FLEXIBLE CONNECTORS TO NEW AIR DEVICES.
- EXISTING CEILING MOUNTED AIR DEVICE TO REMAIN. DO NOT DISTURB. REFERENCE DEMOLITION KEYNOTE #2 FOR ADDITIONAL AIR DEVICE INFORMATION.
- NEW CEILING MOUNTED AIR DEVICES. ADJUST FINAL LOCATION IN FIELD TO ACCOMMODATE FIELD CONDITIONS. EXTEND FLEXIBLE DUCT FROM AIR DEVICE TO CONNECT TO EXISTING SUPPLY AIR DUCT. INCLUDE A MANUAL VOLUME DAMPER IN EACH FLEXIBLE DUCT CONNECTION AND BALANCE TO INDICATED AIR FLOW.
- NEW CEILING MOUNTED EXHAUST FAN. EXTEND 8x4 DISCHARGE DUCT FROM EXHAUST FAN AND TERMINATE ON EXTERIOR WALL WITH FULL SIZE VENT CAP. COORDINATE POINT OF DISCHARGE AND TERMINATION WITH DEMOLITION PLAN PRIOR TO BEGINNING ANY WORK. COMBINE DISCHARGE DUCTS INTO A SINGLE HEADER PRIOR TO DISCHARGE CONNECTION.
- EXISTING AIR DEVICE IN NEW LOCATION. EXTEND NEW FLEXIBLE DUCT FOR CONNECTION TO EXISTING SUPPLY AIR DUCT. INCLUDE MANUAL VOLUME DAMPER IN BRANCH DUCT AND BALANCE TO INDICATED AIR FLOW. REFERENCE DEMOLITION KEYNOTE #2 FOR ADDITIONAL AIR DEVICE INFORMATION.



SECOND FLOOR HVAC NEW WORK PLAN

SCALE: 1/4" = 1'-0"

H.M. Yonge & Assoc., Inc.
Consulting Engineers
102 EAST GARDEN STREET
PENSACOLA, FLORIDA 32502
PHONE: (850) 454-2661

CERTIFICATE OF AUTHORIZATION NO. 5254
MECHANICAL ENGINEER: HOWARD M. YONGE, P.E. - FLORIDA REG. NO. 32093
ELECTRICAL ENGINEER: SCOTT A. ADAMS, P.E. - FLORIDA REG. NO. 57949

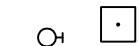
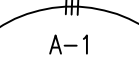
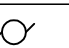
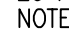
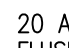
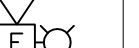
Project
Old Courthouse
2nd Floor Restroom
ADA Renovations
Pensacola, Florida

Date:
01/25/17
Project No.
1307C

Sheet No.

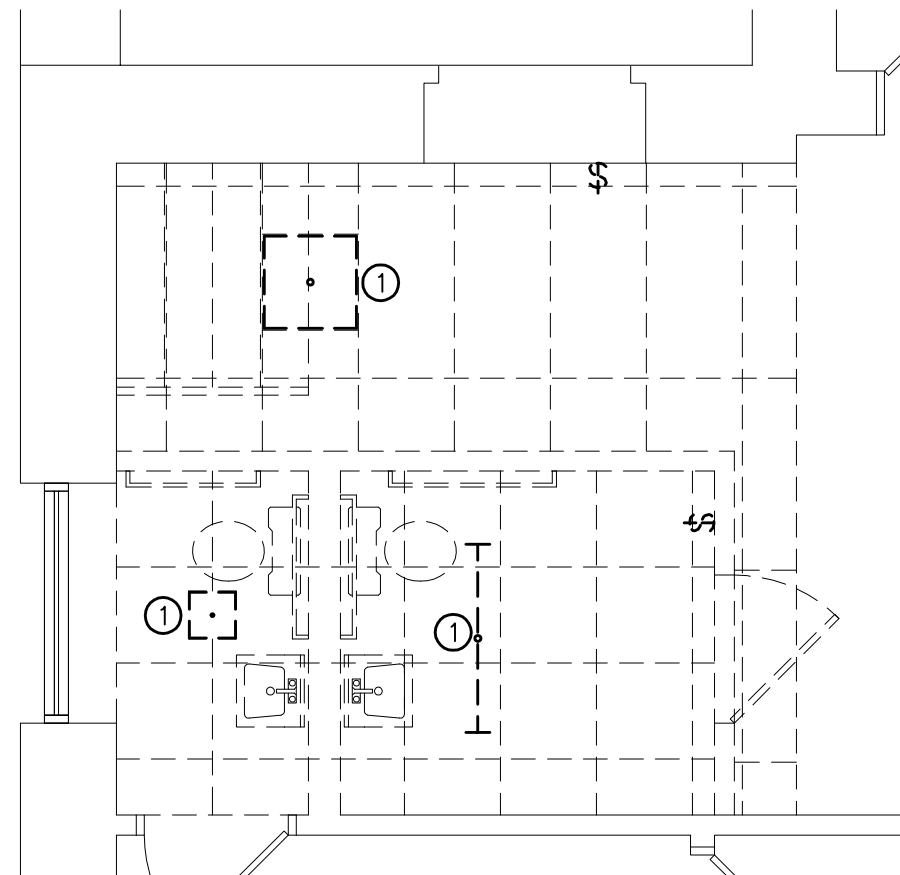
M1

ELECTRICAL SYMBOL LEGEND

SYMBOL	DESCRIPTION
	LIGHTING FIXTURE - LETTER(S) DENOTE TYPE. SEE LIGHTING FIXTURE SCHEDULE.
	BRANCH CIRCUIT CONDUIT RUN CONCEALED IN WALL OR ABOVE CEILING. ARROWS INDICATE CIRCUIT HOMERUN. HASHMARKS INDICATE NUMBER OF CONDUCTORS. ABSENCE OF HASHMARKS INDICATES TWO CONDUCTORS PLUS GROUND. "A" DENOTES PANELBOARD SERVING CIRCUIT. "1" INDICATES CIRCUIT BREAKER SPACE IN PANELBOARD. SEE RESPECTIVE PANEL CIRCUIT SCHEDULE. MINIMUM CIRCUIT SIZE = 2#12,1#12G,1/2"G. PROVIDED DEDICATED NEUTRALS, HANDLE TIES ARE NOT PERMITTED.
	ELECTRIC MOTOR - SEE RESPECTIVE EQUIPMENT SCHEDULE.
	20 AMP, 120/277 VAC SINGLE POLE TOGGLE SWITCH - FLUSH WALL MOUNTED 48" A.F.F. UNLESS NOTED OTHERWISE. SUBSCRIPT INDICATES AS FOLLOWS: M - MANUAL SINGLE-PHASE STARTER, 1 HORSEPOWER MAXIMUM 2-POLE. DT - 20 AMP, 120/277 VAC DUAL TECHNOLOGY WALL SWITCH, WATTSTOPPER DW-100. FLUSH WALL MOUNTED 48" A.F.F. UNLESS NOTED OTHERWISE. TIME DELAY DURATION SHALL BE 30 MINUTES MAXIMUM. SEE MANUFACTURERS INSTRUCTIONS FOR APPROPRIATE DIP SWITCH SETTINGS. PROGRAM FOR "MANUAL ON".
	20 AMP, 125 VAC, 2-POLE, 3-WIRE, GROUND FAULT CIRCUIT INTERRUPTED TYPE DUPLEX RECEPTACLE FLUSH WALL-MOUNTED 18" A.F.F. UNLESS NOTED OTHERWISE.
	FIRE ALARM SYSTEM VISUAL DEVICE SEMI FLUSH WALL MOUNTED 80" A.F.F. UNLESS NOTED OTHERWISE.
SYMBOLS NOTES: 1. ALL OUTLETS ARE TO BE FLUSH MOUNTED. 2. MOUNTING HEIGHTS ARE FROM THE CENTER LINE OF THE DEVICE. 3. A.F.F. INDICATES MOUNTING HEIGHT ABOVE FINISHED FLOOR.	

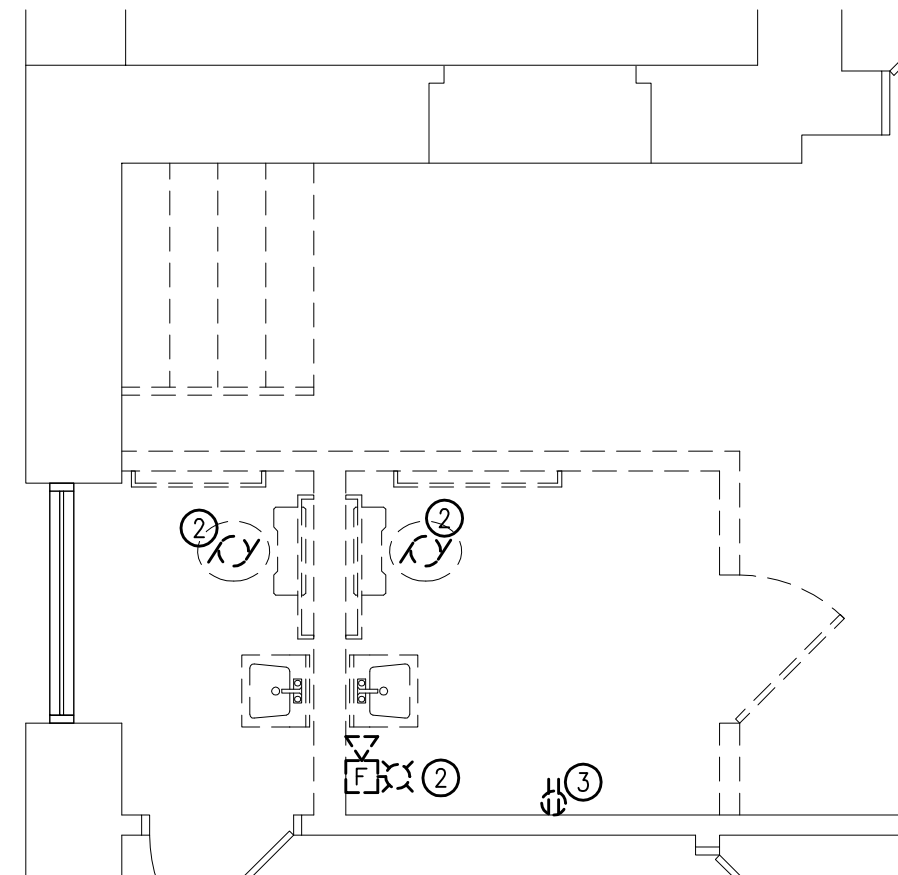
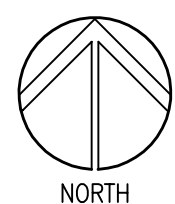
LIGHTING FIXTURE SCHEDULE

MARK	LAMPS		MOUNTING	MANUFACTURER AND CATALOG NUMBER	NOTES
	#	WATTS	TYPE		
BP	2	5.4	INCAN	HEW EMER/CP-WHT	
DL1	1	18W 3000K	18W MEDBASE LED BULB	HEW A75-18WLED-A21F/MED-CS	
FB	1	18W 3000K	18W MEDBASE LED BULB	\$300 ALLOWANCE	
F4A2	4	10W 3000K	10W 2FT LED TUBE	HEW 50G-S22-410LED-SA12125-UNV	



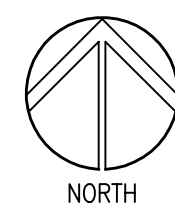
SECOND FLOOR ELECTRICAL DEMOLITION PLAN

SCALE: 1/4" = 1'-0"



SECOND FLOOR ELECTRICAL DEMOLITION PLAN

SCALE: 1/4" = 1'-0"



ELECTRICAL DEMOLITION KEYNOTES

1. LIGHT FIXTURES IN THIS AREA TO BE REMOVED. CONTRACTOR TO FIELD VERIFY QUANTITY AND LOCATION. EXISTING LIGHTING CIRCUITRY TO REMAIN AND BE REUSE, PROTECT DURING CONSTRUCTION.
2. ALL ELECTRICAL DEVICES IN THIS AREA TO BE REMOVED. CONTRACTOR TO FIELD VERIFY QUANTITY AND LOCATION. DEMOLITION SHALL INCLUDE CONDUIT AND WIRE.
3. RECEPTACLE CIRCUIT FEEDING DEVICE (DEVICE TO BE REMOVED) SHALL BE REUSED FOR CONNECTION TO NEW DEVICES. SEE NEW WORK PLAN FOR NEW DEVICE LOCATIONS.

GENERAL DEMOLITION NOTES:

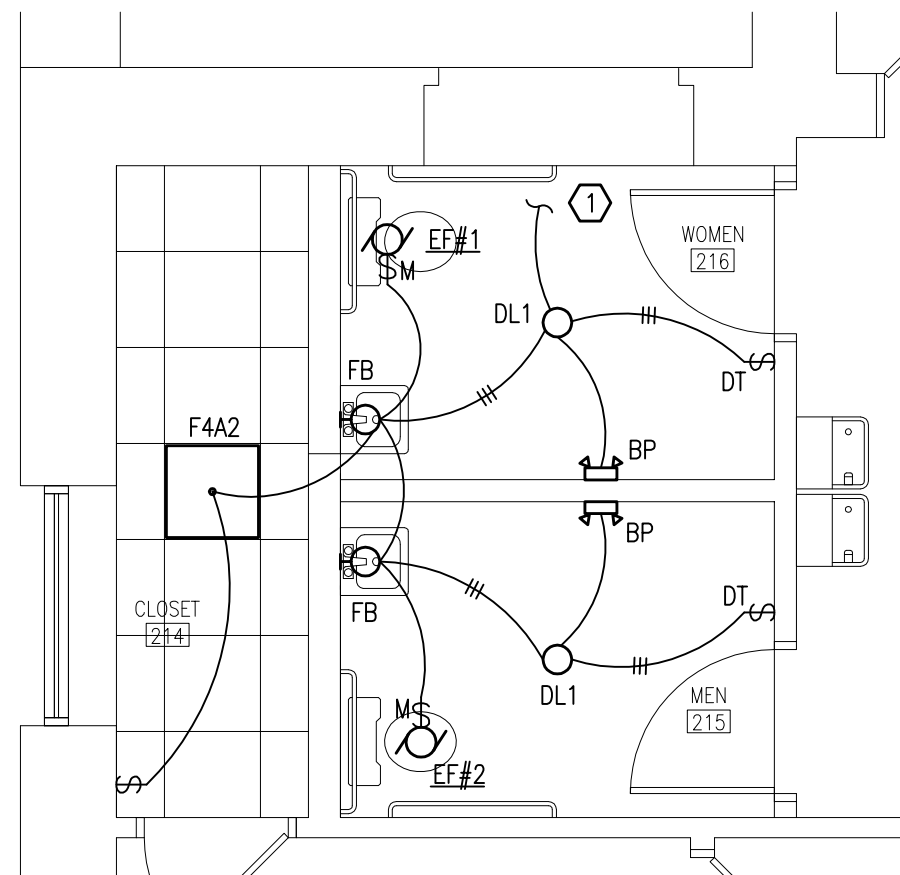
1. THE ELECTRICAL CONTRACTOR SHALL VISIT THE JOB SITE AND BECOME FAMILIAR WITH THE EXTENT OF WORK REQUIRED TO COMPLETE THE JOB PRIOR TO BIDDING.
2. **ALL ELECTRICAL DEVICES SHOWN SHALL BE REMOVED IN THEIR ENTIRETY UNLESS NOTED OTHERWISE.** DEMOLITION SHALL INCLUDE DEVICES AND WIRING UNLESS BRANCH CIRCUIT SERVES EQUIPMENT BEYOND DEVICES BEING DELETED. CONDUIT THAT IS CONCEALED ABOVE HARD CEILING, CONCEALED BELOW GRADE OR CONCEALED IN WALLS NEED NOT BE REMOVED. WIRING AND EXPOSED CONDUIT SHALL ALWAYS BE REMOVED, UNLESS NOTES OTHERWISE.
3. ALL DEMOLITION WORK THAT INVOLVES MECHANICAL EQUIPMENT SHALL BE COORDINATED BETWEEN THE ELECTRICAL AND MECHANICAL CONTRACTORS.
4. CONTRACTOR SHALL REPAIR ANY DAMAGED WALLS OR SLAB DUE TO DEMOLITION OR RELOCATION OF ANY ELECTRICAL DEVICES. WALLS AND SLAB SHALL BE PATCHED, REPAIRED, AND PAINTED TO MATCH EXISTING. COORDINATE WITH ARCHITECT AS REQUIRED.

ELECTRICAL NEW WORK KEYNOTES

1. PROVIDE POWER CONNECTION TO EXISTING LIGHTING CIRCUIT. REWORK EXISTING LIGHTING CIRCUIT AS REQUIRED TO ACCOMMODATE NEW FIXTURE INSTALLATION. PROVIDE NEW CONDUIT AND WIRE AS REQUIRED (TO MATCH EXISTING) FOR A COMPLETE AND FUNCTIONAL SYSTEM.
2. NOT USED.
3. PROVIDE 2#12,1#12G,1/2"C HOMERUN TO "SPARE" CIRCUIT BREAKER LJ-27 IN PANEL "LJ" IN THIRD FLOOR CORRIDOR.
4. PROVIDE POWER CONNECTION AS REQUIRED TO EXISTING LOCAL RECEPTACLE CIRCUIT. SEE DEMOLITION NOTES FOR EXISTING CIRCUIT LOCATION. EXISTING CIRCUIT SHALL BE REWORKED AS REQUIRED FOR CONNECTION AT NEW LOCATION.
5. PROVIDE CONNECTION TO EXISTING FIRE ALARM NAC CIRCUIT ON THIS FLOOR.

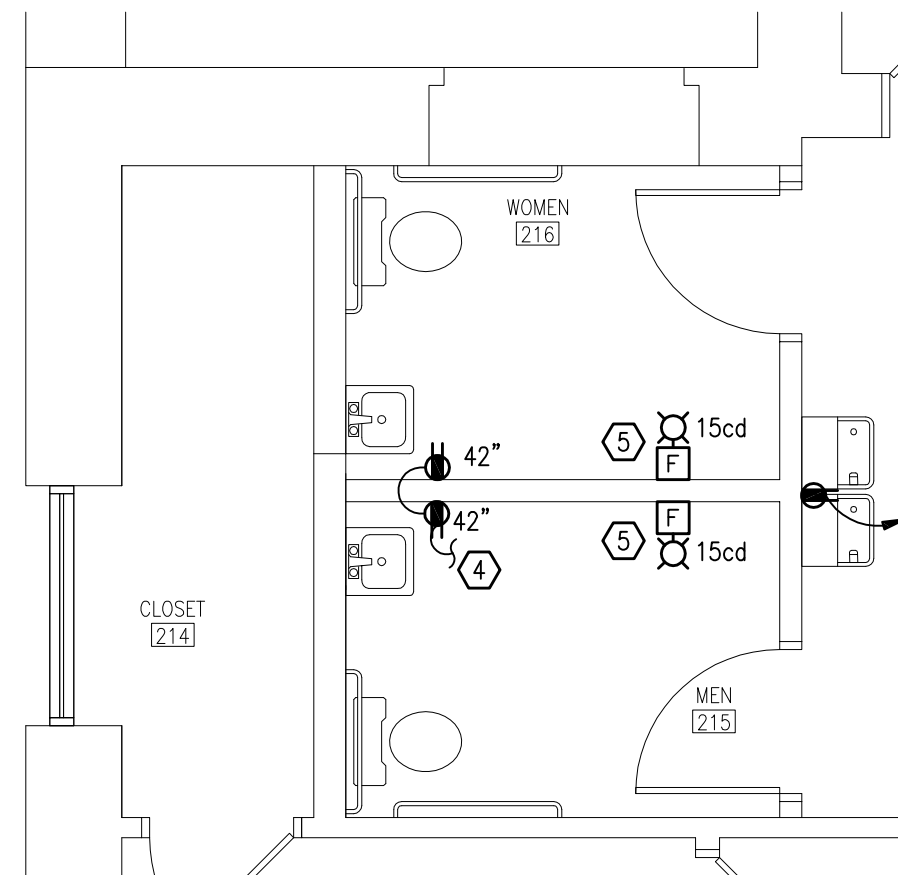
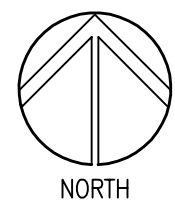
GENERAL NEW WORK NOTES:

1. ALL CONDUIT AND CONDUCTORS FOR ALL DEVICES AND FIXTURES SHALL BE INSTALLED CONCEALED ABOVE CEILING, IN WALLS, IN CASE WORK, OR BENEATH FLOOR. **EXPOSED CONDUIT OR CONDUCTORS SHALL NOT BE PERMITTED.**
2. **ALL SYSTEMS SHALL BE COMPLETE AND FULLY FUNCTIONAL UPON COMPLETION OF CONSTRUCTION.** CONTRACTOR SHALL FIELD VERIFY EXISTING SYSTEMS AND CONNECTIONS. CONTRACTOR SHALL PROVIDE ALL CONDUITS AND CONDUCTORS AS REQUIRED.
3. **ALL EQUIPMENT INSTALLATION LOCATIONS SHALL BE COORDINATED WITH THE ARCHITECT PRIOR TO ANY ROUGH-IN.**



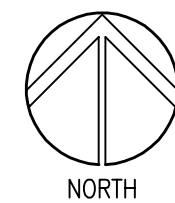
SECOND FLOOR ELECTRICAL NEW WORK PLAN

SCALE: 1/4" = 1'-0"



SECOND FLOOR ELECTRICAL NEW WORK PLAN

SCALE: 1/4" = 1'-0"



H.M. Yonge & Assoc., Inc.
Consulting Engineers

100 EAST GARDEN STREET
PENSACOLA, FLORIDA 32502
PHONE: (850) 454-2661

* CERTIFICATE OF AUTHORIZATION NO. 5254
* MECHANICAL ENGINEER: HOWARD M. YONGE, P.E. - FLORIDA REG. NO. 32093
* ELECTRICAL ENGINEER: SCOTT A. ADAMS, P.E. - FLORIDA REG. NO. 57949

Project
Old Courthouse
2nd Floor Restroom
ADA Renovations
Pensacola, Florida

Date:
01/25/17
Project No.
1307C

Sheet No.

E1