

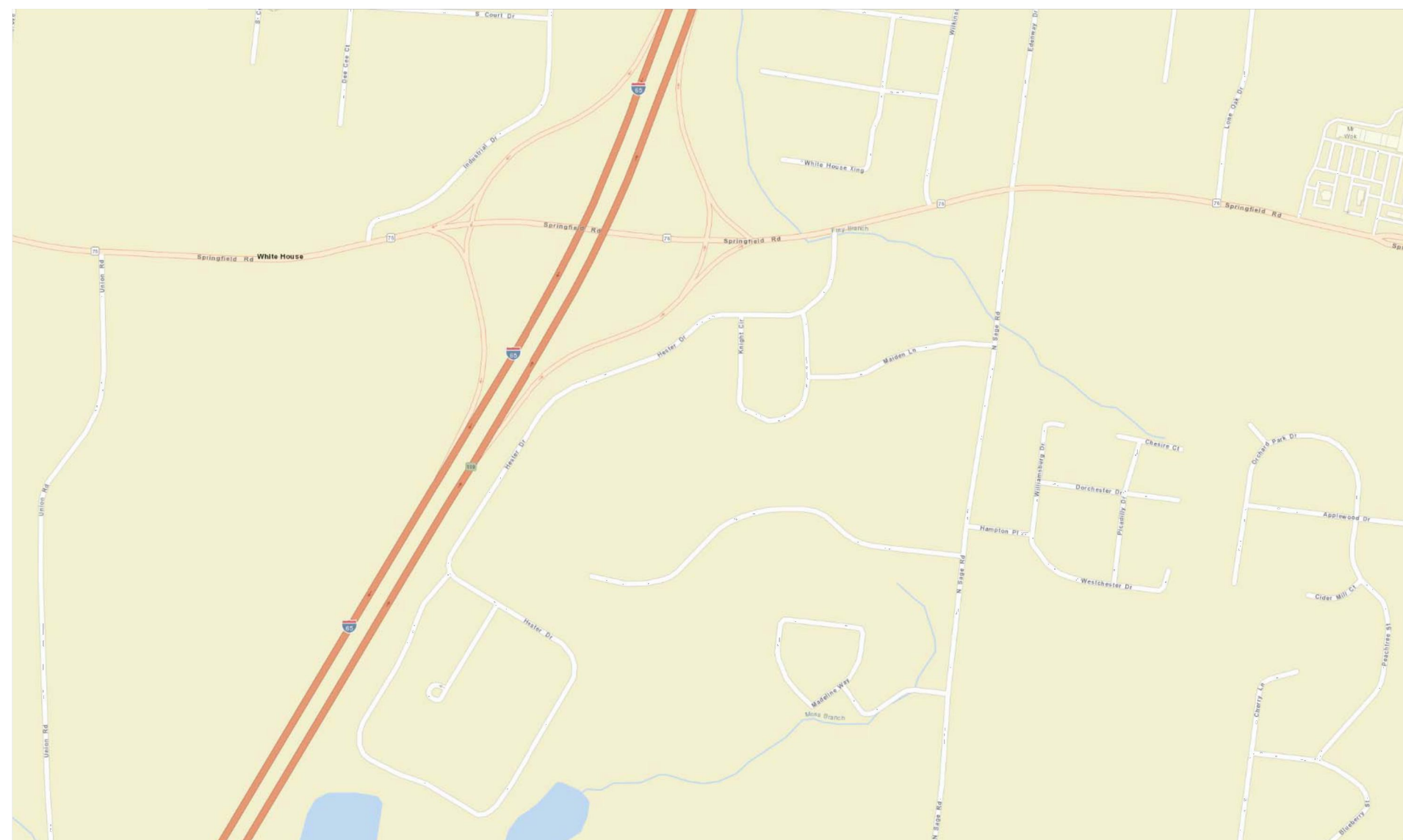
SAGE ROAD SIDEWALK & REALIGNMENT CITY OF WHITE HOUSE ROBERTSON COUNTY WHITE HOUSE, TENNESSEE AUGUST 2017

SHEET INDEX

C1	COVER
C2	PROPOSED PLAN VIEW
C3	PROPOSED PROFILE VIEW
C4	DETAILS & CONTRACT B
C5	PIPE AND CATCH BASIN DETAILS

GENERAL CONSTRUCTION NOTES

1. FINISH GRADE TOLERANCES SHALL BE AS NOTED IN THE SPECIFICATIONS. THE ENGINEER MAY MAKE GRADE CHANGES AS REQUIRED IN THE FIELD WITHOUT EFFECTING THE UNIT BID PRICE FOR UNCLASSIFIED EXCAVATION.
2. UNLESS OTHERWISE STATED, ALL FILL AREAS SHALL BE CONSTRUCTED IN LAYERS OF 8" MAXIMUM THICKNESS, WITH WATER ADDED OR SOIL CONDITIONED TO THE OPTIMUM MOISTURE CONTENT AS DETERMINED BY THE ENGINEER AND COMPACTED WITH A SHEEP'S FOOT ROLLER TO A COMPACTION EQUAL TO OR GREATER THAN 95% (100% IN THE TOP 2' OF THE SUB GRADE BELOW ROADWAYS AND PARKING LOTS) OF THE DENSITY OBTAINED BY COMPACTING A SAMPLE OF THE MATERIAL IN ACCORDANCE WITH THE STANDARD PROCTOR METHOD OF MOISTURE-DENSITY RELATIONSHIP TEST, ASTM D698 OR AASHTO-99 UNLESS SPECIFIED IN OTHER SPECIFICATIONS.
3. ENTIRE AREA TO BE GRADED SHALL BE CLEARED AND GRUBBED. NO FILL SHALL BE PLACED ON ANY AREA NOT CLEARED AND GRUBBED.
4. ALL SOIL EROSION CONTROL MEASURES REQUIRED BY THE GRADING PLAN SHALL BE PERFORMED PRIOR TO GRADING, CLEARING OR GRUBBING. ALL EROSION CONTROL DEVICES SUCH AS SILT FENCES, ETC., SHALL BE MAINTAINED IN WORKABLE CONDITION FOR THE LIFE OF THE PROJECT AND SHALL BE REMOVED AT THE COMPLETION OF THE PROJECT ONLY ON THE ENGINEER'S APPROVAL. IF DURING THE LIFE OF THE PROJECT, A STORM CAUSES SOIL EROSION WHICH CHANGES FINISH GRADES OR CREATES "GULLIES" AND "WASHED AREAS", THESE SHALL BE REPAIRED AT NO EXTRA COST, AND ALL SILT WASHED OFF OF THE PROJECT SITE ONTO ADJACENT PROPERTY SHALL BE REMOVED AS DIRECTED BY THE ENGINEER AT NO EXTRA COST. THE CONTRACTOR SHALL ADHERE TO ANY APPROVED EROSION CONTROL PLANS WHETHER INDICATED IN THE CONSTRUCTION PLANS OR UNDER SEPARATE COVER.
5. DISPOSABLE MATERIAL
 - A. CLEARING AND GRUBBING WASTES SHALL BE REMOVED FROM THE SITE AND PROPERLY DISPOSED OF BY THE CONTRACTOR AT HIS EXPENSE, UNLESS SPECIFIED OTHERWISE.
 - B. SOLID WASTES TO BE REMOVED, SUCH AS SIDEWALKS, CURBS, PAVEMENT, ETC., MAY BE PLACED IN SPECIFIC DISPOSAL AREAS DELINEATED ON THE PLANS OR REMOVED FROM THE SITE AS REQUIRED BY THE SPECIFICATIONS. THIS MATERIAL SHALL HAVE A MINIMUM COVER OF 2'. THE CONTRACTOR SHALL MAINTAIN SPECIFIED COMPACTION REQUIREMENTS IN THESE AREAS. WHEN DISPOSAL SITES ARE NOT PROVIDED, THE CONTRACTOR SHALL REMOVE THIS WASTE FROM THE SITE AND PROPERLY DISPOSE OF IT AT HIS EXPENSE.
 - C. ABANDONED UTILITIES SUCH AS CULVERTS, WATER PIPE, HYDRANTS, CASTINGS, PIPE APPURTENANCES, UTILITY POLES, ETC., SHALL BE THE PROPERTY OF THE SPECIFIC UTILITY AGENCY, OR COMPANY HAVING JURISDICTION. BEFORE THE CONTRACTOR CAN REMOVE, DESTROY, SALVAGE, REUSE, SELL OR STORE FOR HIS OWN USE ANY ABANDONED UTILITY, HE MUST PRESENT TO THE OWNER WRITTEN PERMISSION FROM THE UTILITY INVOLVED.
6. IN THE EVENT EXCESSIVE GROUNDWATER OR SPRINGS ARE ENCOUNTERED WITHIN THE LIMITS OF CONSTRUCTION, THE CONTRACTOR SHALL INSTALL NECESSARY UNDER DRAINS AND STONE AS DIRECTED BY THE ENGINEER. ALL WORK SHALL BE PAID BASED UPON UNIT BIDS, UNLESS SPECIFIED OTHERWISE.
7. THE CONTRACTOR IS RESPONSIBLE FOR THE COORDINATION OF ADJUSTMENT OF ALL UTILITY SURFACE ACCESSSES WHETHER HE PERFORMS THE WORK OR A UTILITY COMPANY PERFORMS THE WORK.
8. THE CONTRACTOR SHALL CONTROL ALL "DUST" BY PERIODIC WATERING AND SHALL PROVIDE ACCESS AT ALL TIMES FOR PROPERTY OWNERS WITHIN THE PROJECT AREA AND FOR EMERGENCY VEHICLES. ALL OPEN DITCHES AND HAZARDOUS AREAS SHALL BE CLEARLY MARKED IN ACCORDANCE WITH THE SPECIFICATIONS.
9. ALL AREAS WHERE THERE IS EXPOSED DIRT SHALL BE SEEDED, FERTILIZED AND MULCHED ACCORDING TO THE SPECIFICATIONS. THE FINISHED SURFACE SHALL BE TO GRADE AND SMOOTH, FREE OF ALL ROCKS LARGER THAN 3", EQUIPMENT TRACKS, DIRT CLOUDS, BUMPS, RIDGES AND GOUGES PRIOR TO SEEDING; THE SURFACE SHALL BE LOOSENED TO A DEPTH OF ±4"-6" TO ACCEPT SEED. THE CONTRACTOR SHALL NOT PROCEED WITH SEEDING OPERATIONS WITHOUT FIRST OBTAINING THE ENGINEER'S APPROVAL OF THE GRADED SURFACE. HAND SEEDING SHALL BE AUTHORIZED ON AN AREA BY AREA APPROVAL BY THE ENGINEER.
10. CONTRACTOR SHALL VERIFY ALL ELEVATIONS BEFORE INSTALLATION OF FACILITIES.



City of White House, Tennessee
105 College Street
White House, Tennessee 37188
ph. 615-672-4350
http://cityofwhitehouse.com



Sage Road Sidewalk &
Realignment
Cover

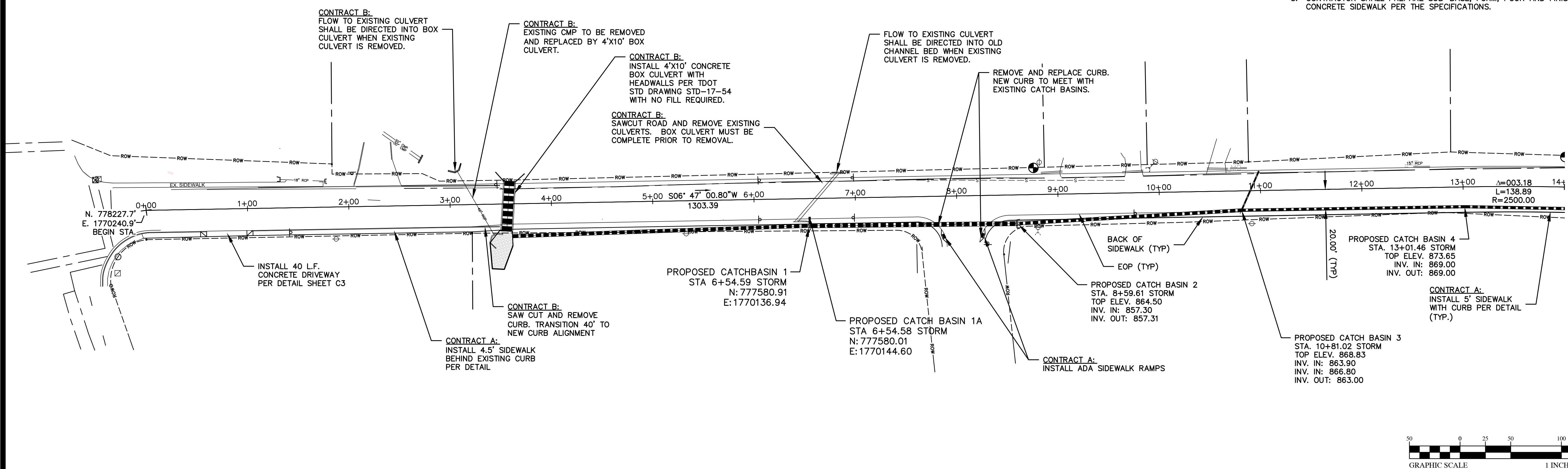
SHEET
C5 of 5



NO.	DATE	BY	REVISION DESCRIPTION



- GENERAL NOTES:
- EOP SHALL BE LOCATED AT 20' FROM CENTERLINE OF ROAD (TYP.). TRANSITION IS FROM STA. 26+50 TO 26+75 AND SHALL TRANSITION FROM 20' TO 31' FROM CENTERLINE OF ROAD UNTIL MADELINE WAY.
 - BACK OF SIDEWALK SHALL BE LOCATED 25' FROM CENTERLINE (TYP.). TRANSITION IS FROM STA. 26+50 TO 26+75 AND SHALL TRANSITION FROM 25' TO 36' FROM CENTERLINE OF ROAD UNTIL MADELINE WAY. ELEVATIONS FOR BACK OF SIDEWALK ARE 0.2' HIGHER THAN CENTERLINE OF ROAD (TYP.) AND TRANSITION TO 0.0' FROM STA. 26+50 TO 26+75 UNTIL MADELINE WAY.
 - CONTRACTOR SHALL PREPARE SUB-BASE, FORM, POUR AND FINISH CONCRETE SIDEWALK PER THE SPECIFICATIONS.

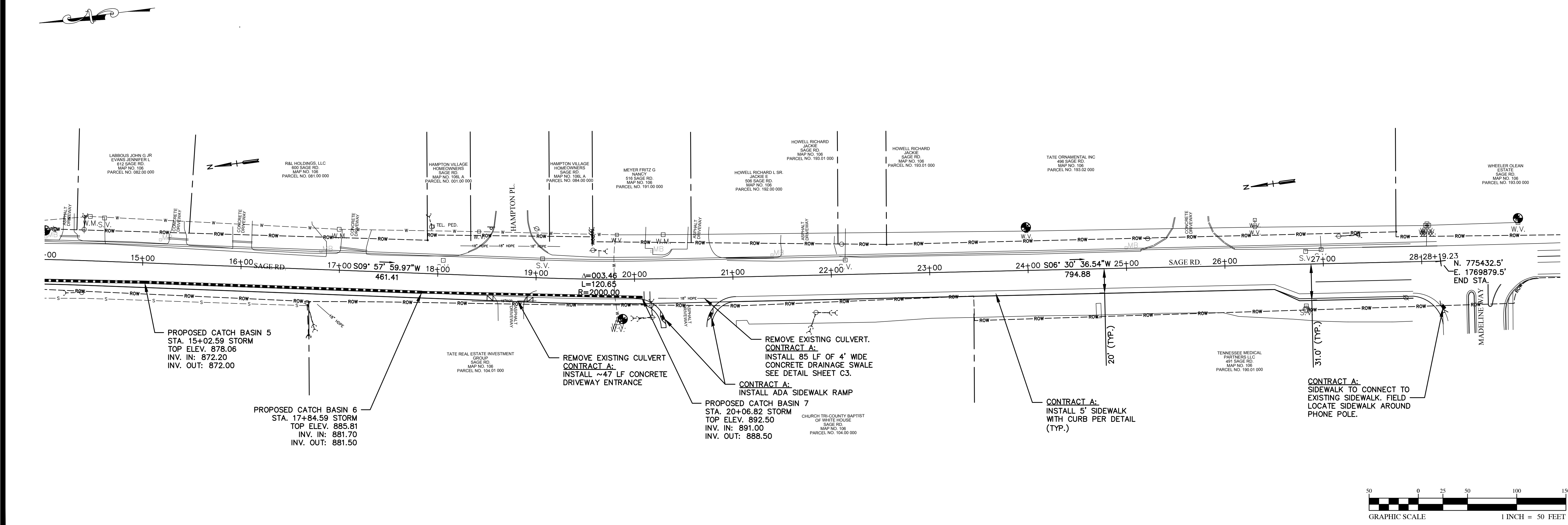
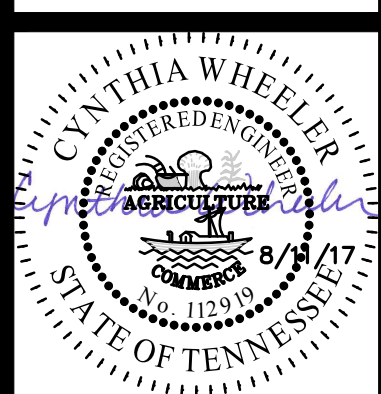


City of White House, Tennessee
 105 College Street
 White House, Tennessee 37188
 ph. 615-672-4350
<http://cityofwhitehouse.com>

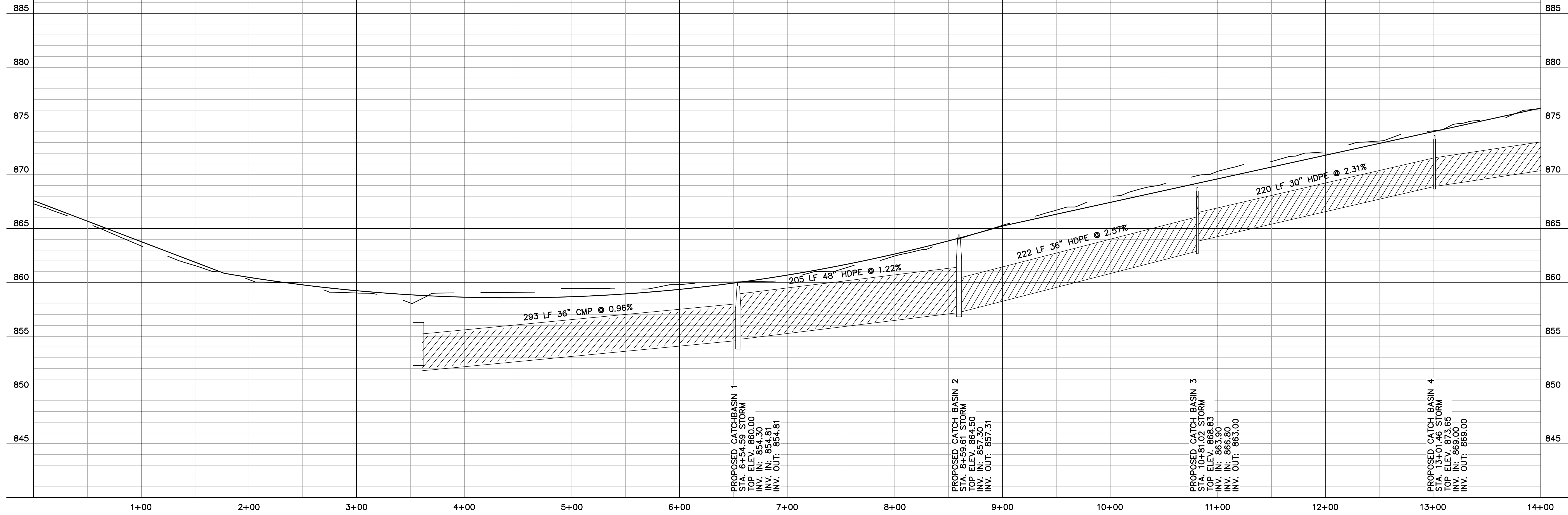


Sage Road Sidewalk &
 Realignment
 Proposed Plan View

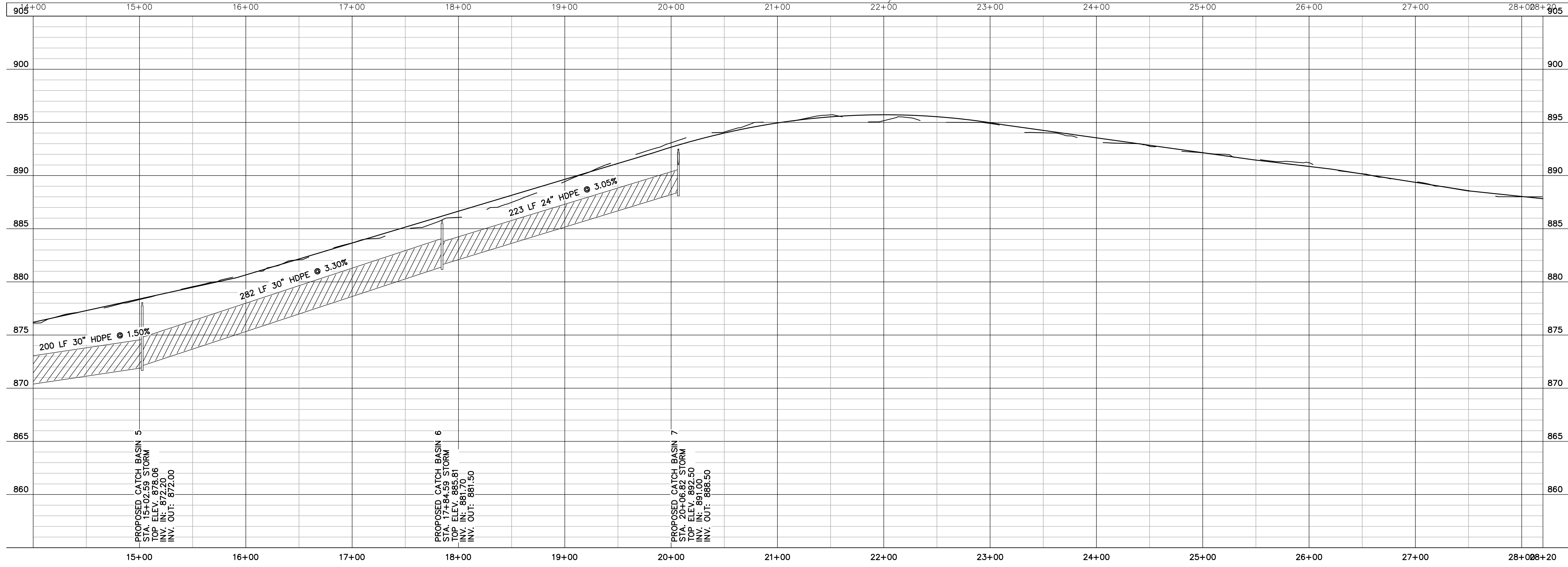
SHEET
 C2 of 5



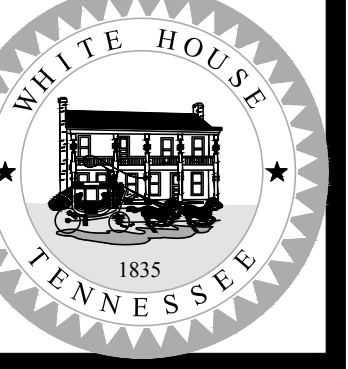
NO.	DATE	BY	REVISION DESCRIPTION



PROFILE: CENTERLINE
(VERTICAL SCAL 1:5
HORIZONTAL SCALE 1:50)



City of White House, Tennessee
105 College Street
White House, Tennessee 37188
ph. 615-672-4350
http://cityofwhitehouse.com



Sage Road Sidewalk &
Realignment
Proposed Profile View

SHEET
C3 of 5



NO.	DATE	BY	REVISION DESCRIPTION

L&W PROPERTIES GP
692 HWY 76
MAP NO. 106
PARCEL NO. 080.00 000

CONTRACT B:
EXISTING PIPE SHALL BE REMOVED UPON COMPLETION OF THE BOX CULVERT. ROADWAY SHALL BE FILLED WITH FULL #57 STONE BACKFILL AND 4" PUG/CUSHER RUN CAP PER COMPACTION REQUIREMENTS IN THE GENERAL NOTES THIS PAGE.

CONTRACT B:
EXISTING PIPE SHALL BE REMOVED UPON COMPLETION OF THE BOX CULVERT. ROADWAY SHALL BE FILLED WITH FULL #57 STONE BACKFILL AND 4" PUG/CUSHER RUN CAP PER COMPACTION REQUIREMENTS IN THE GENERAL NOTES THIS PAGE.

CONTRACT B:
PRECAST CONCRETE 10'X4' BOX CULVERT APPROXIMATELY 50 L.F. PER TDOT STANDARD DRAWING STD-17-54. STA 3+57.60 INVERT IN: 852.5' INVERT OUT: 852.0

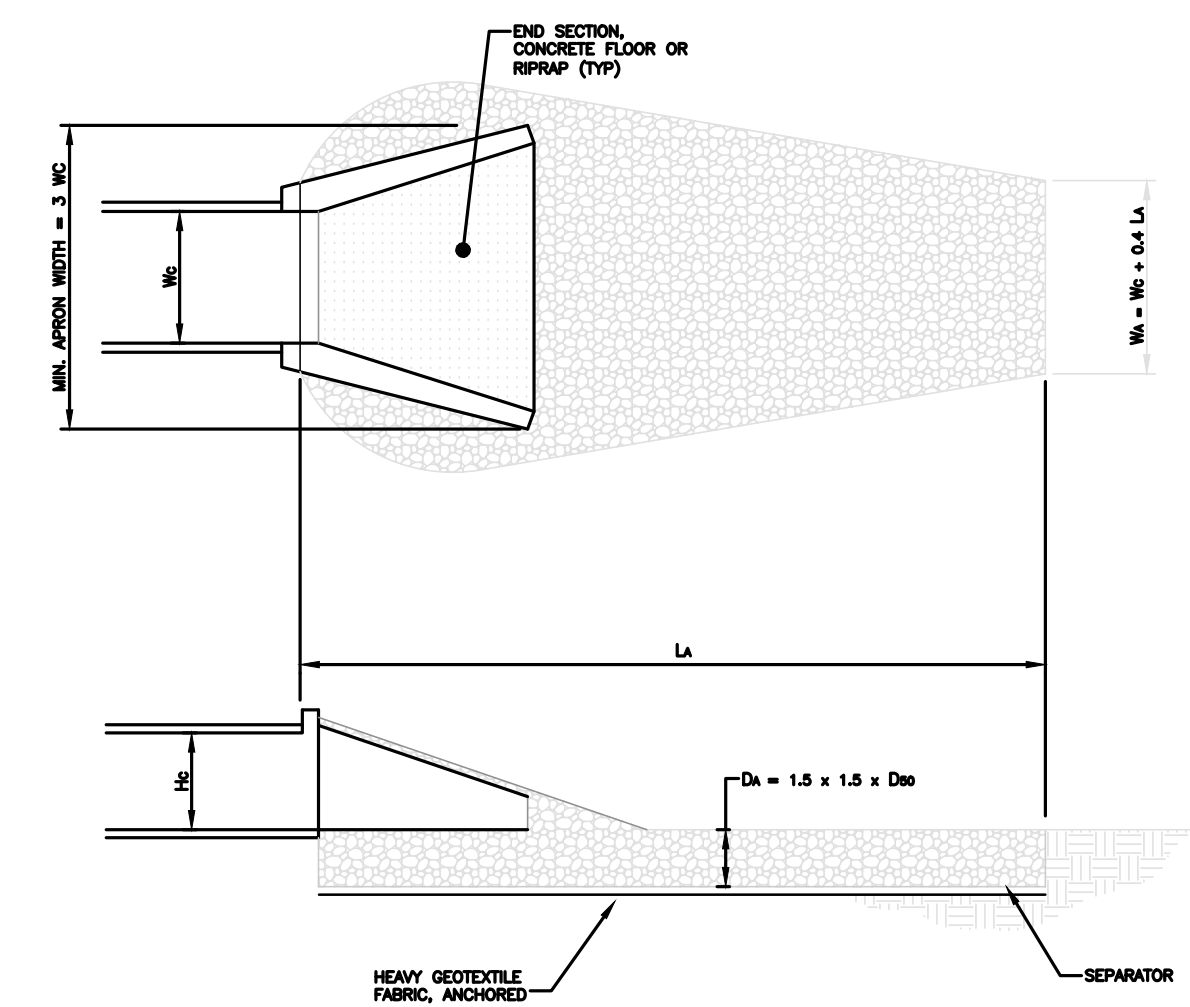
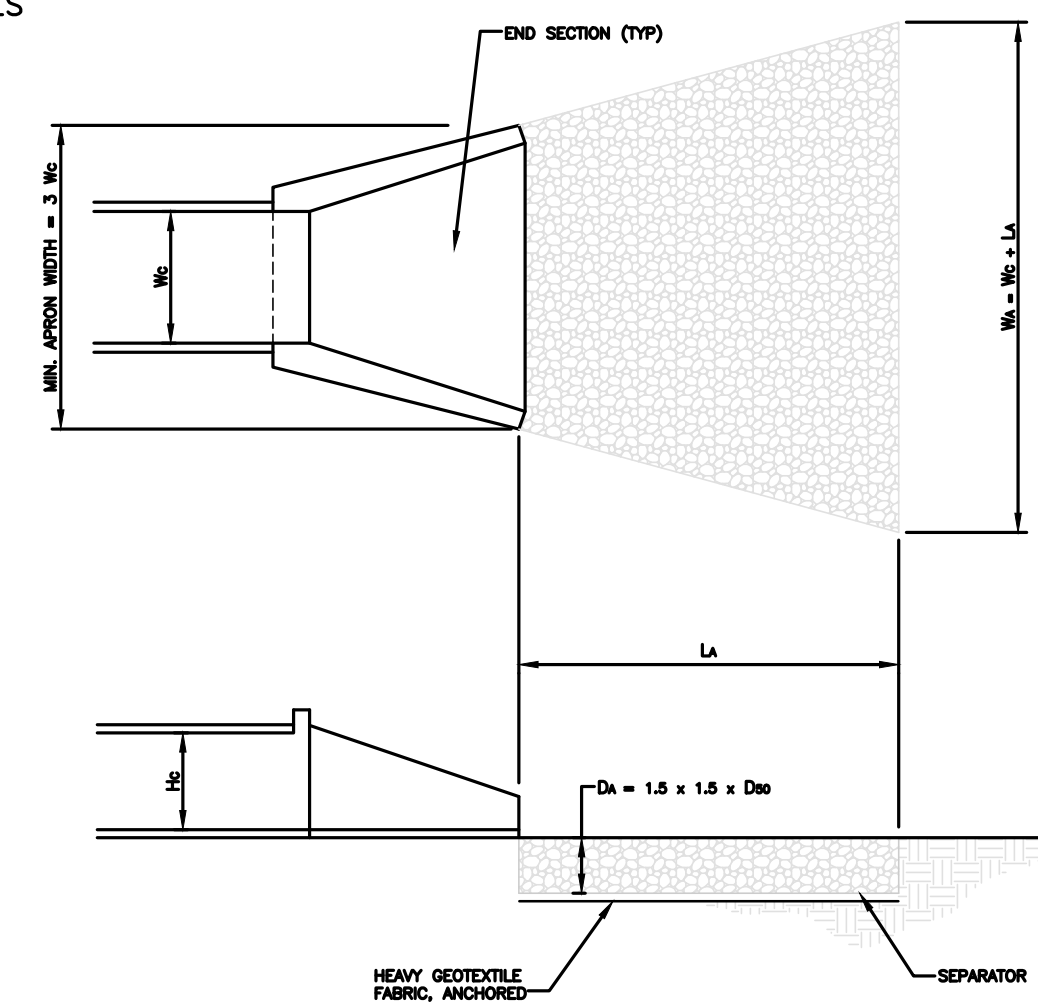
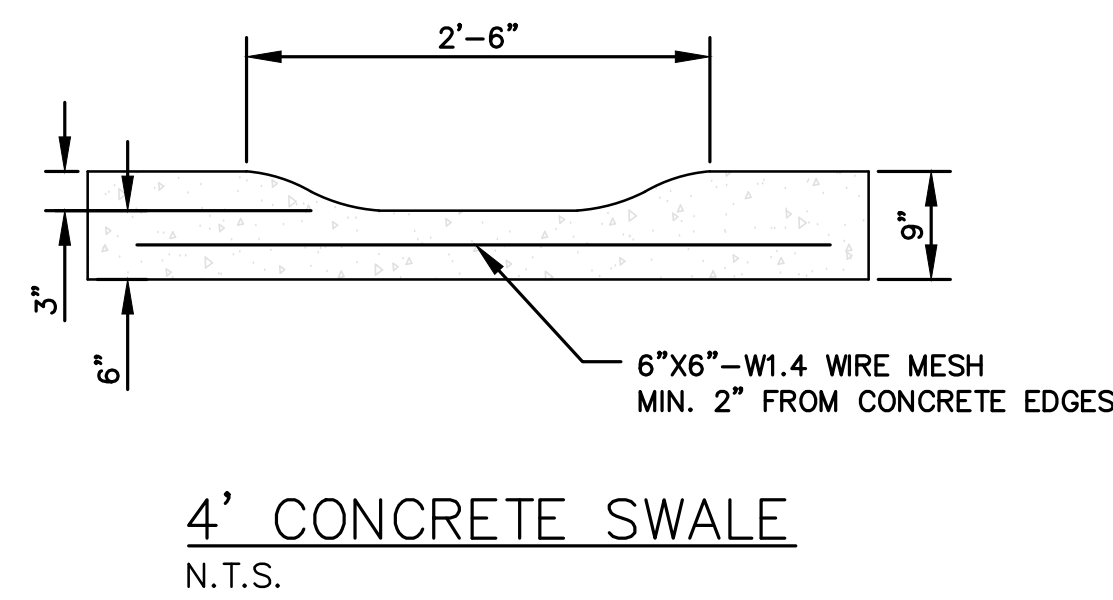
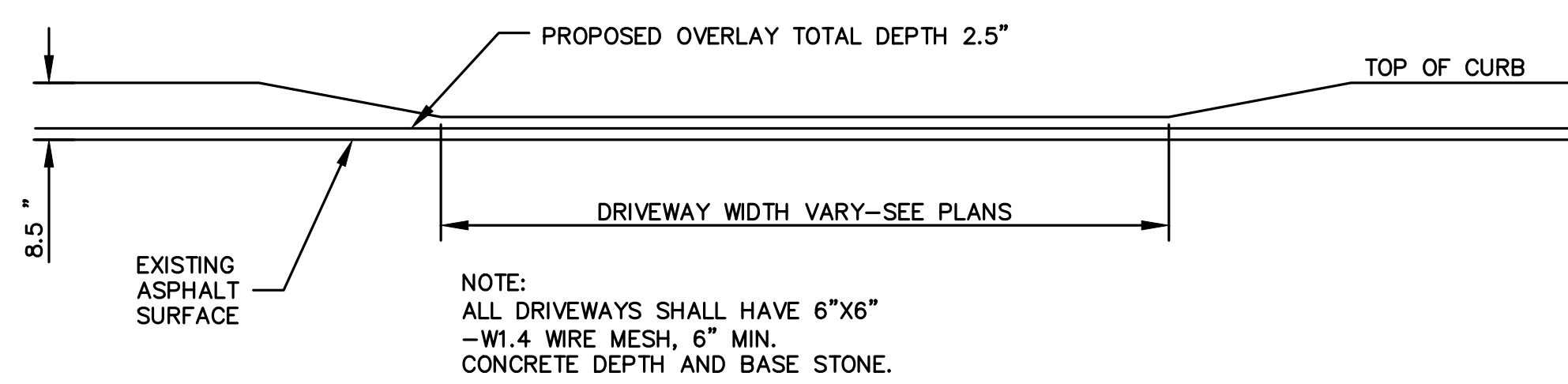
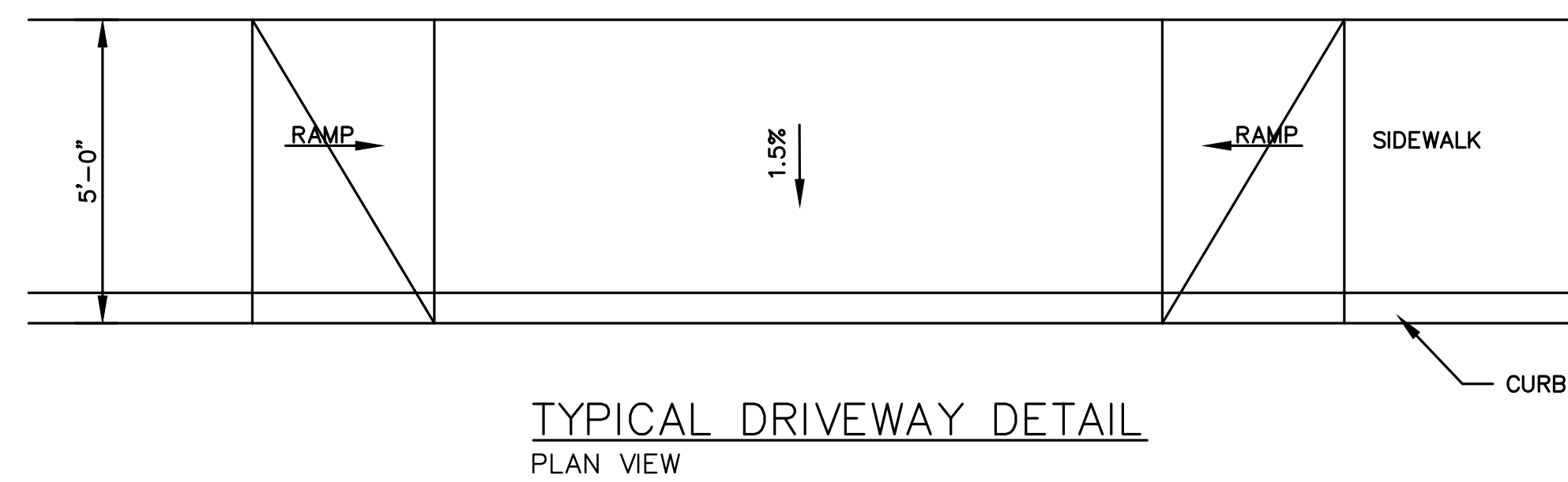
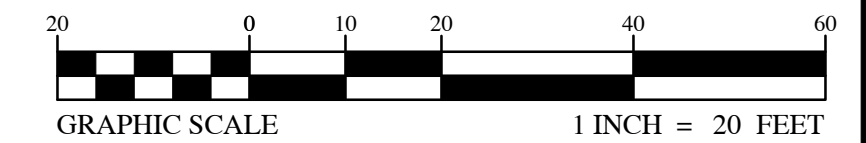
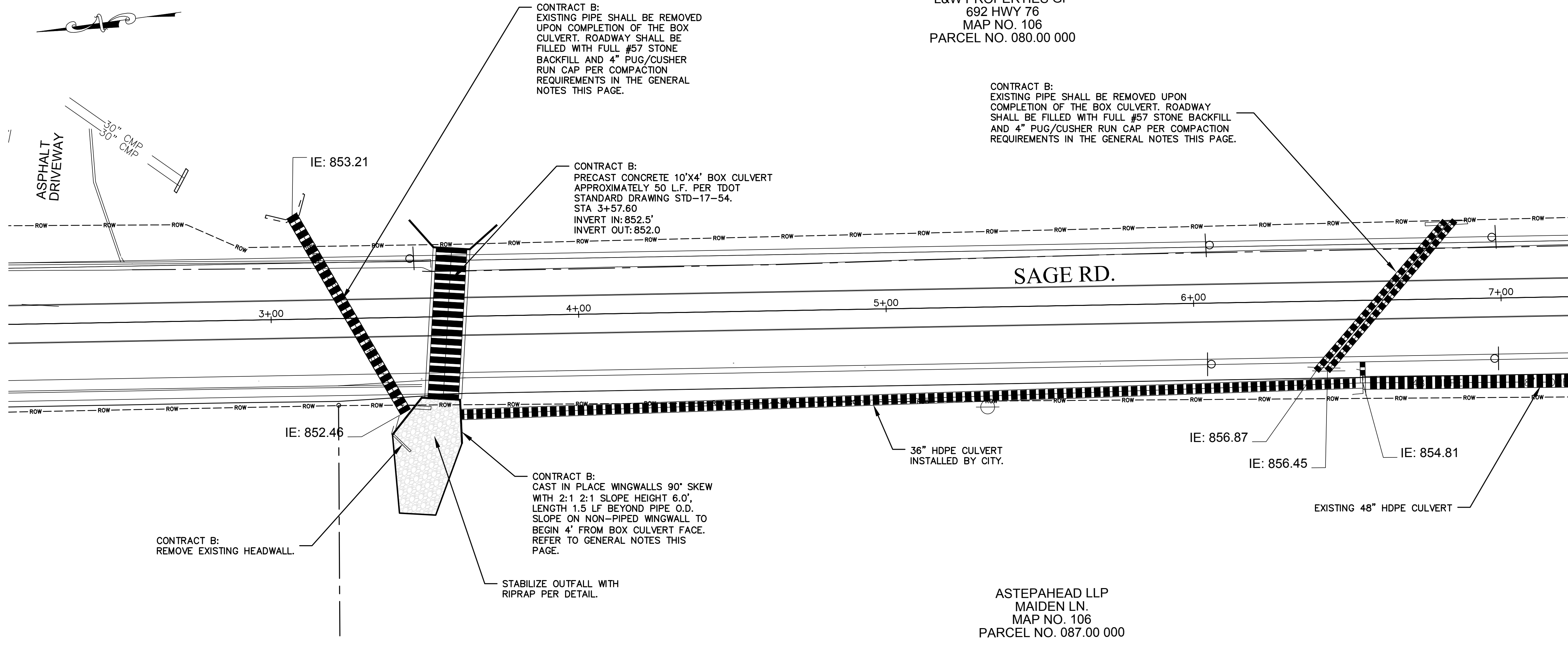
CONTRACT B:
CAST IN PLACE SLOPE WINGWALLS 90° SKEW WITH 2:1 2:1 SLOPE HEIGHT 6.0'. LENGTH 1.5 L.F. BEYOND PIPE O.D. SLOPE ON NON-PIPED WINGWALL TO BEGIN 4' FROM BOX CULVERT FACE. REFER TO GENERAL NOTES THIS PAGE.

CONTRACT B:
REMOVE EXISTING HEADWALL.

STABILIZE OUTFALL WITH RIPRAP PER DETAIL.

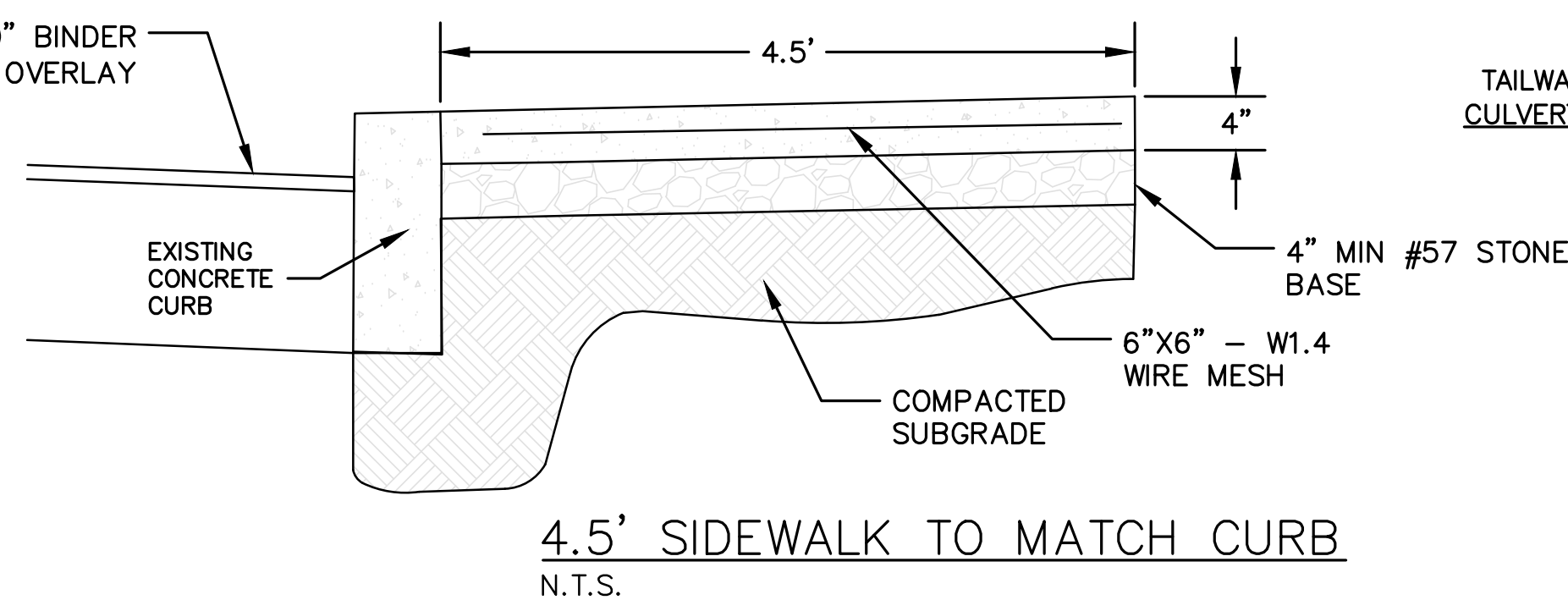
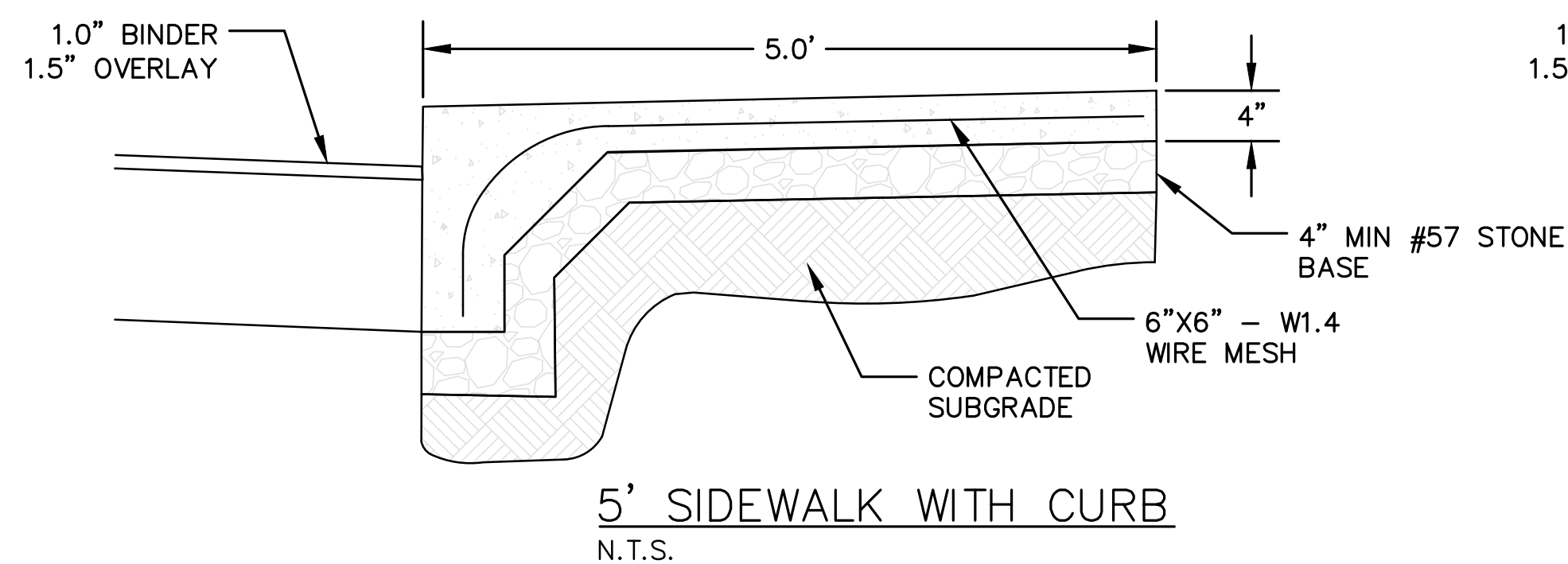
ASTEPAHEAD LLP
MAIDEN LN.
MAP NO. 106
PARCEL NO. 087.00 000

- GENERAL NOTES:
1. ALL WORK ASSOCIATED WITH THE CULVERT AND WINGWALLS CONSTRUCTION SHALL BE PERFORMED IN ACCORDANCE WITH THE LATEST EDITION OF THE TENNESSEE DEPARTMENT OF TRANSPORTATION'S STANDARD SPECIFICATIONS FOR ROAD AND BRIDGE CONSTRUCTION.
 2. WHEN DISTURBING EXISTING ASPHALT, THE LIMITS OF SUCH SHALL BE SAW-CUT AND PERPENDICULAR TO ROADWAY TO PROVIDE A CLEAN EDGE AND SMOOTH TRANSITION FOR NEW PAVING UPON WORK COMPLETION. PAVING WORK SHALL BE PERFORMED UNDER SEPARATE CONTRACT.
 3. ROADWAY SHALL BE BROUGHT UP TO GRADE WITH FULL #57 STONE BACKFILL AND CAPPED WITH 4" PUG/CRUSHER RUN.
 4. UNLESS OTHERWISE STATED ALL FILL AND BACKFILL AREAS SHALL BE CONSTRUCTED IN LAYERS OF 8" MAXIMUM THICKNESS, WITH WATER ADDED OR SOIL CONDITIONED TO ACHIEVE 95% COMPACTION (100% IN THE TOP 2' OF THE SUB GRADE BELOW ROADWAYS) OF THE DENSITY OBTAINED BY COMPACTING A SAMPLE OF THE MATERIAL IN ACCORDANCE WITH THE STANDARD PROCTOR METHOD OF MOISTURE-DENSITY RELATIONSHIP TEST, ASTM D698. ALL AREAS DISTURBED BY THE PROPOSED CONSTRUCTION THAT ARE NOT TO BE RE-PAVED SHALL BE STABILIZED WITH SEED AND STRAW UNLESS OTHERWISE NOTED.



Hc = HEIGHT OF CULVERT
Wc = WIDTH OF CULVERT
L.A. = LENGTH OF RIP-RAP APRON
W.A. = WIDTH OF RIP-RAP APRON AT END
D.D. = MEDIUM RIP-RAP SIZE
D.W. = MAXIMUM SIZE OF RIP-RAP = 1.5 D.D.
D.A. = DEPTH OF RIP-RAP APRON = 1.5 D.W.
SEPARATOR = GEOTEXTILE UNDERLAYMENT OR GRAVEL FILTER BLANKET

OUTFALL STABILIZATION
N.T.S.



City of White House, Tennessee
105 College Street
White House, Tennessee 37188
ph. 615-672-4350
http://cityofwhitehouse.com



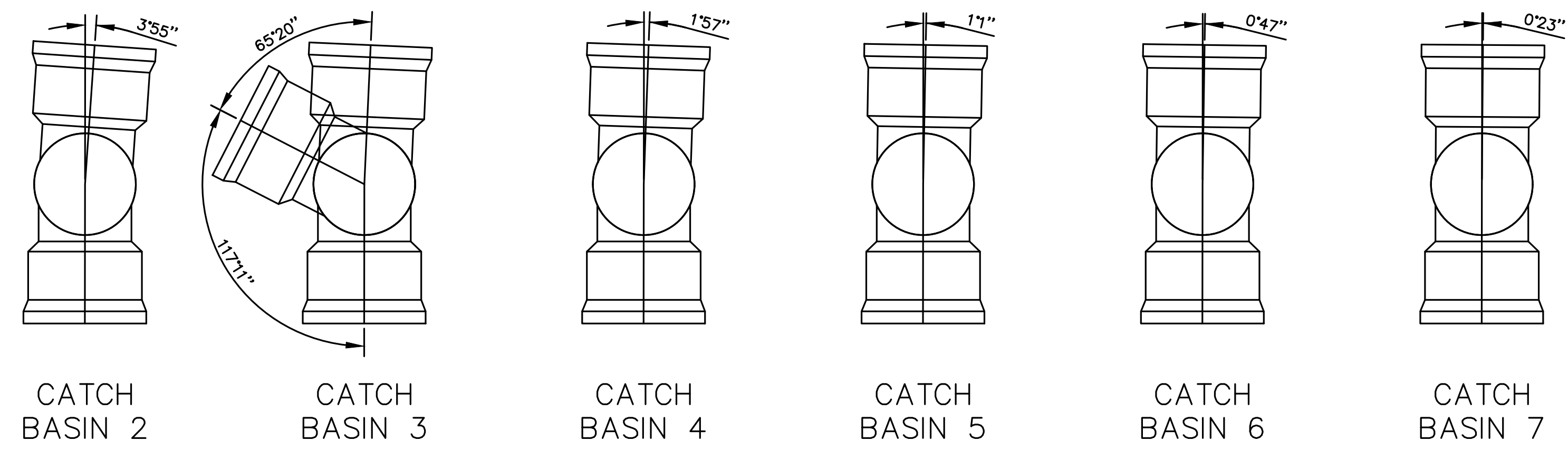
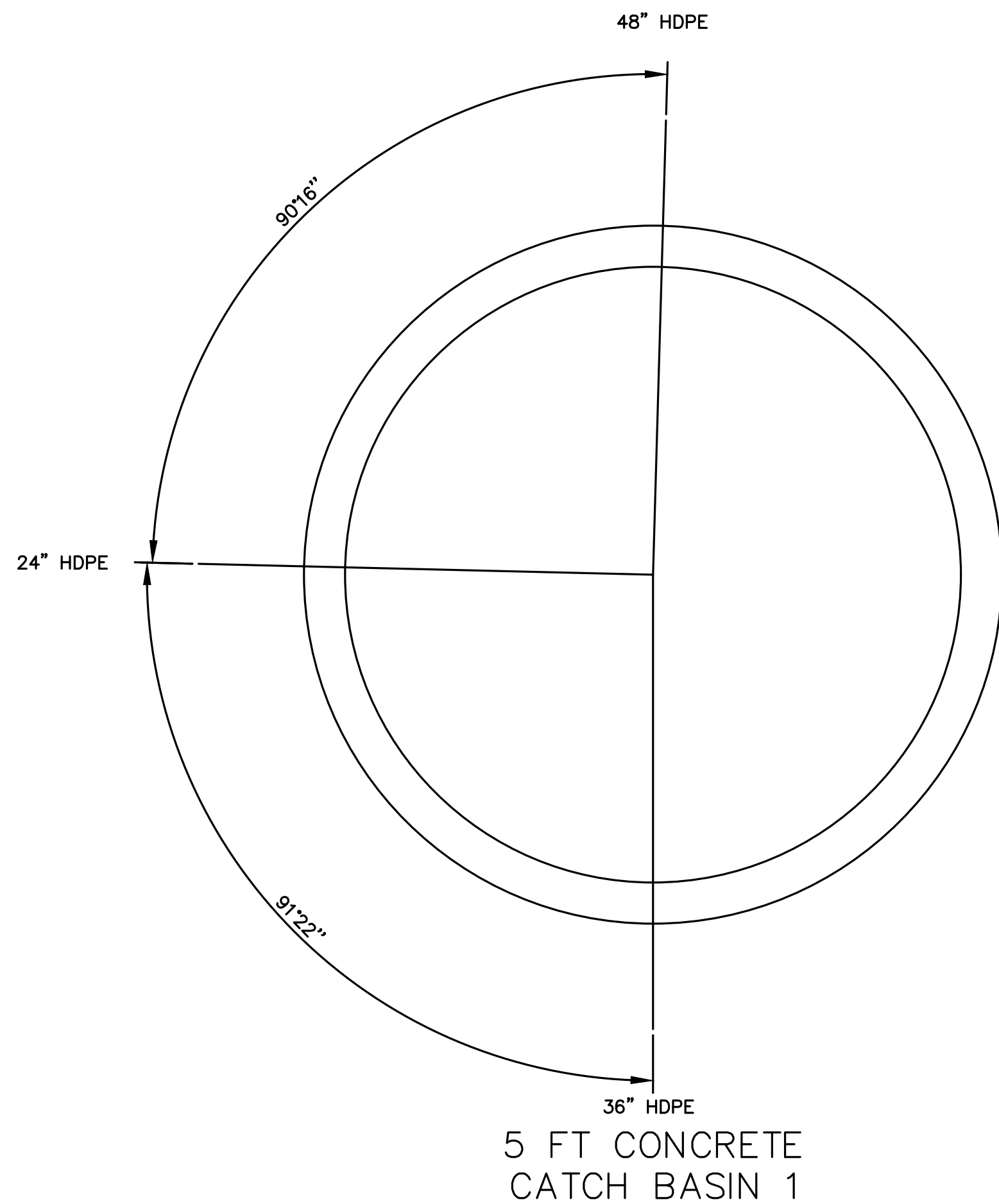
Sage Road Sidewalk & Realignment
Details & CONTRACT B

SHEET
C4 of 5



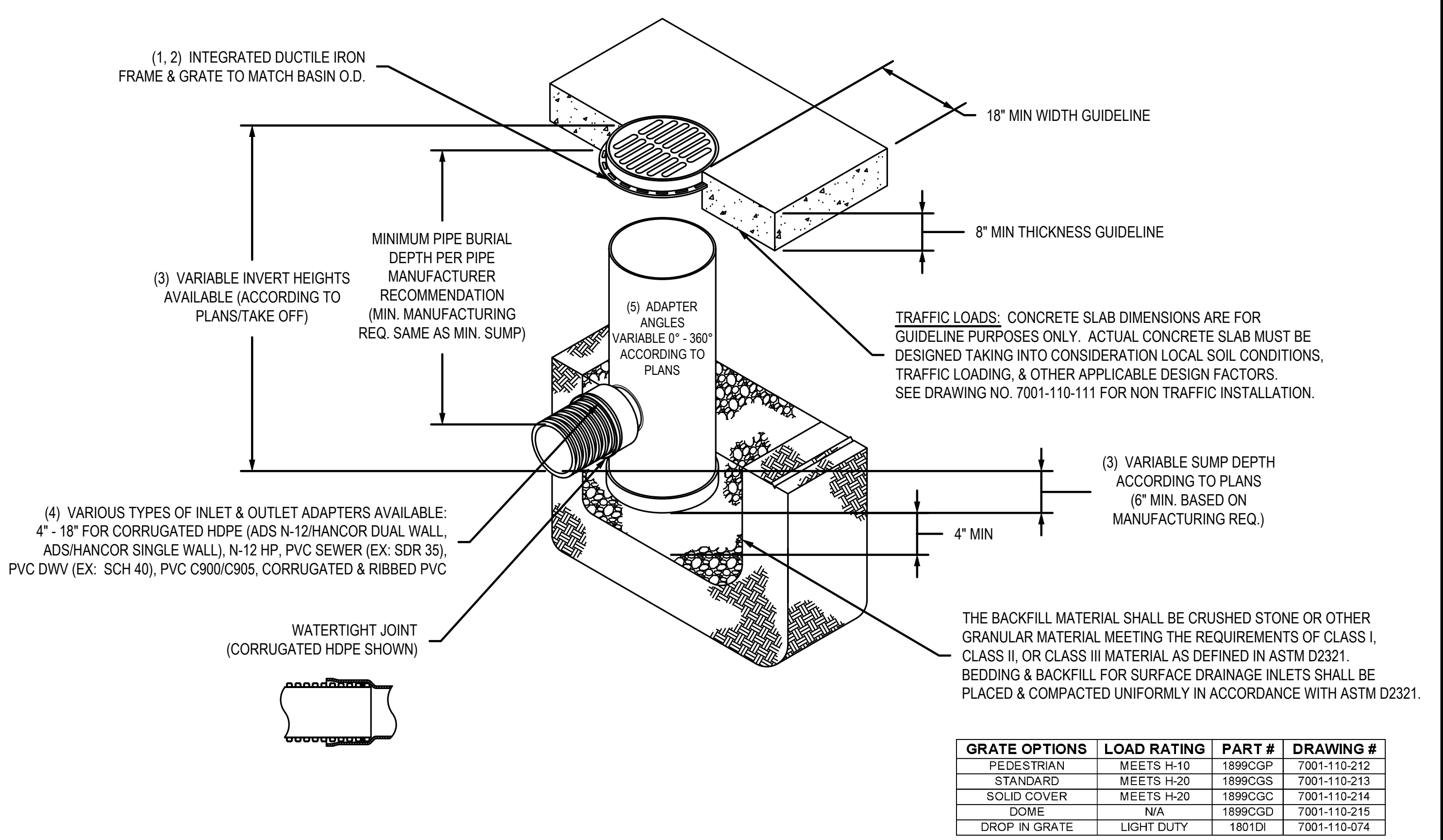
NO.	DATE	BY	REVISION DESCRIPTION

Pipe Name	Inner Ø	Slope	Start Structure	Start Inv. Elev.	End Structure	End Inv. Elev.	2D Length	Bearing
Storm 7	24.000"	3.05%	CATCH BASIN 7	888.500'	CATCH BASIN 6	881.700'	223.162'	N09° 05' 18.12"E
Storm 6	30.000"	3.30%	CATCH BASIN 6	881.500'	CATCH BASIN 5	872.200'	281.999'	N09° 52' 30.93"E
Storm 5	30.000"	1.50%	CATCH BASIN 5	872.000'	CATCH BASIN 4	869.000'	200.005'	N08° 51' 16.02"E
Storm 4	30.000"	2.31%	CATCH BASIN 4	869.000'	CATCH BASIN 3	863.900'	220.444'	N06° 54' 06.55"E
Storm 3	36.000"	2.57%	CATCH BASIN 3	863.000'	CATCH BASIN 2	857.300'	221.603'	N04° 23' 29.86"E
Storm 2 (existing)	48.000"	1.22%	CATCH BASIN 2	857.310'	CATCH BASIN 1	854.810'	205.021'	N07° 12' 41.55"E
Storm 1	36.000"	0.96%	CATCH BASIN 1	854.810'		852.000'	293.438'	N05° 47' 36.88"E
Box Culvert	10'x4'	1.03%		852.500'		852.000'	48.466'	N78° 59' 20.23"W



NOTE:
 1. ALL CATCH BASIN ANGULAR DIMENSIONS ARE MEASURED FROM THE DOWNSTREAM TO UPSTREAM.
 2. NYLOPLAST DRAIN BASIN SHALL BE TOPPED WITH A CONE STYLE REDUCER TO 24\"/>

NYLOPLAST 18" DRAIN BASIN: 2818AG __ X



GRATE OPTIONS	LOAD RATING	PART #	DRAWING #
PEDESTRIAN	MEETS H-10	1899CGP	7001-110-212
STANDARD	MEETS H-20	1899CGS	7001-110-213
SOLID COVER	MEETS H-20	1899CGC	7001-110-214
DOME	N/A	1899CGD	7001-110-215
DROP IN GRATE	LIGHT DUTY	1801DI	7001-110-074

1 - GRATES/SOLID COVER SHALL BE DUCTILE IRON PER ASTM A536 GRADE 70-50-05.
 2 - FRAMES SHALL BE DUCTILE IRON PER ASTM A536 GRADE 70-50-05.
 3 - DRAIN BASIN TO BE CUSTOM MANUFACTURED ACCORDING TO PLAN DETAILS. RISERS ARE NEEDED FOR BASINS OVER 84" DUE TO SHIPPING RESTRICTIONS. SEE DRAWING NO. 7001-110-065.
 4 - DRAINAGE CONNECTION STUB JOINT TIGHTNESS SHALL CONFORM TO ASTM D3212 FOR CORRUGATED HDPE (ADS N-12/HANCOR DUAL WALL), N-12 HP. & PVC SEWER.
 5 - ADAPTERS CAN BE MOUNTED ON ANY ANGLE 0° TO 360°. TO DETERMINE MINIMUM ANGLE BETWEEN ADAPTERS SEE DRAWING NO. 7001-110-012.

THIS PRINT DISCLOSES SUBJECT MATTER IN WHICH NYLOPLAST HAS PROPRIETARY RIGHTS. THE RECEIPT OR POSSESSION OF THIS PRINT DOES NOT CONFER, TRANSFER, OR LICENSE THE USE OF THE DESIGN OR TECHNICAL INFORMATION SHOWN HEREIN REPRODUCTION OF THIS PRINT OR ANY INFORMATION CONTAINED HEREIN, OR MANUFACTURE OF ANY ARTICLE HEREFROM, FOR THE DISCLOSURE TO OTHERS IS FORBIDDEN, EXCEPT BY SPECIFIC WRITTEN PERMISSION FROM NYLOPLAST.

©2013 NYLOPLAST

DRAWN BY	EBC	MATERIAL	
DATE	04-03-06		
REVISOR	NMH	PROJECT NO./NAME	
DATE	03-14-16		
DWG SIZE	A	SCALE	1:30 SHEET 1 OF 1

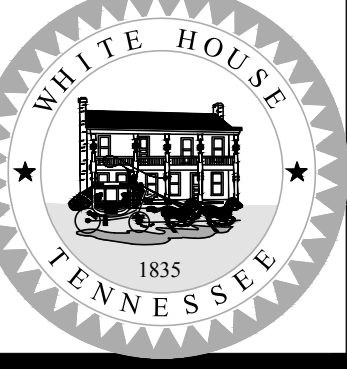
3130 VERONA AVE
 BUFORD, GA 30518
 PHN (770) 932-2443
 FAX (770) 932-2490
 www.nyloplast-us.com

Nyloplast

TITLE
 18 IN DRAIN BASIN QUICK SPEC INSTALLATION DETAIL

DWG NO. 7001-110-191 REV E

City of White House, Tennessee
 105 College Street
 White House, Tennessee 37188
 ph. 615-672-4350
 http://cityofwhitehouse.com



Sage Road Sidewalk &
 Realignment
 Pipe and Catch Basin Details

SHEET
 C5 of 5



NO.	DATE	BY	REVISION DESCRIPTION