

PROJECT MANUAL

APPENDIX C Existing Condition Assessment Report

DEMOLITION OF CENTRAL BOOKING FACILITY

PREPARED FOR



Issued for Bid

June 2018

PREPARED BY:

M

M

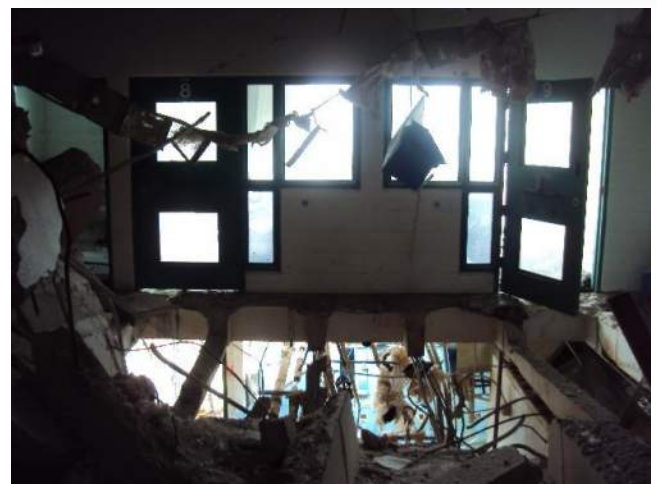
**MOTT
MACDONALD**

**220 West Garden Street, Suite 700
Pensacola, FL 32502**



Escambia County Central Booking and Detention Facility

Condition Assessment Report - June 11, 2015



Prepared By:

ARCHITECTURE/SECURITY



2711 N Haskell Avenue
Dallas, Texas 75204

PRIME/STRUCTURAL/CIVIL



Hatch Mott
MacDonald

5111 N. 12th Avenue
Pensacola, Florida 32504

MECHANICAL/PLUMBING/FIRE

HM Yonge and Associates
49 E Chase Street
Pensacola, Florida 32502

ELECTRICAL/COMMUNICATIONS

Klocke and Associates Inc
49 E Chase Street
Pensacola, Florida 32502

APPENDIX A

CIVIL FIELD OBSERVATIONS & PHOTOS



Photo 1: Northeast Road Access Sediment-Looking East



Photo 2: Damaged Retaining Wall- Looking Southwest



Photo 3: Parking Area Adjacent to Sally Port and Mechanical Room Sediment- Looking North



Photo 4: Parking Area Adjacent to Sally Port and Mechanical Room Sediment- Looking Northwest



Photo 5: Northwest Ramp Sediment- Looking West



Photo 6: Northwest Ramp Sediment- Looking West



Photo 7: Northwest Ramp Sediment- Looking East



Photo 8: Northwest Access Road Erosion- Looking South



Photo 9: Northwest Access Road Erosion-Looking Southeast



Photo 10: Northwest Access Road Erosion- Looking Southeast



Photo 11: Northwest Concrete Landing Undermining- Looking Southwest



Photo 12: Northwest Concrete Slab Undermining- Looking East



Photo 13: Northwest Concrete Slab Complete Undermining- Looking East



Photo 14: Northwest Access Road Erosion- Looking Northwest



Photo 15: Curb at East Edge of Northwest Access Road Ditching- Looking East



Photo 16: Northwest Access Road Erosion- Looking Northwest

5/27/15: stormwater damage observed: 5/26/15. ang.



S. IVANHOE BLVD. ORLANDO, FL. 32804 (407)423-6355 (407)422-6894(FAX) ARCHITECTURE PLANNING INTERIOR DESIGN CONSTRUCTION SERVICES

PROJECT

central booking and detention facility
escambia county, florida

UTILITY PLAN

sheet title:

STROLLO/ARCHITECTS INCORPORATED

revisions

scale 1" = 30'
drawn
check
date 8/11/98
project no. 9705

C-2

architect expressly reserves his exclusive common law copyright and property rights to these drawings which may not be reproduced, changed or copied in any form or manner, nor are they to be assigned to any party without the architect's written consent.

concrete slab undermined

curb separating from road.

large segments of road broken off

undermining of asphalt, erosion
- old asphalt roadway visible.

sediment removal.

sediment removal.

(parking area adjacent to Sally port & mechanical room).

retaining wall fractured / pieces broken off.

STORM INLET#2

STORM INLET#3

sediment removal.

STORM MANHOLE #1

STORM INLET#1

STORM INLET#4

4 STORY BRICK
HOSPITAL
DOWN MANHOLE
#2 27.27'

lift stat filled with water.
unable to determine condition of
interior components or presence of
sediment.

Note: Not all damages to site were able to
be observed due to large piles of debris
located on the site.

not all damages to existing roadway surfaces
were able to be observed due to sedimentation.

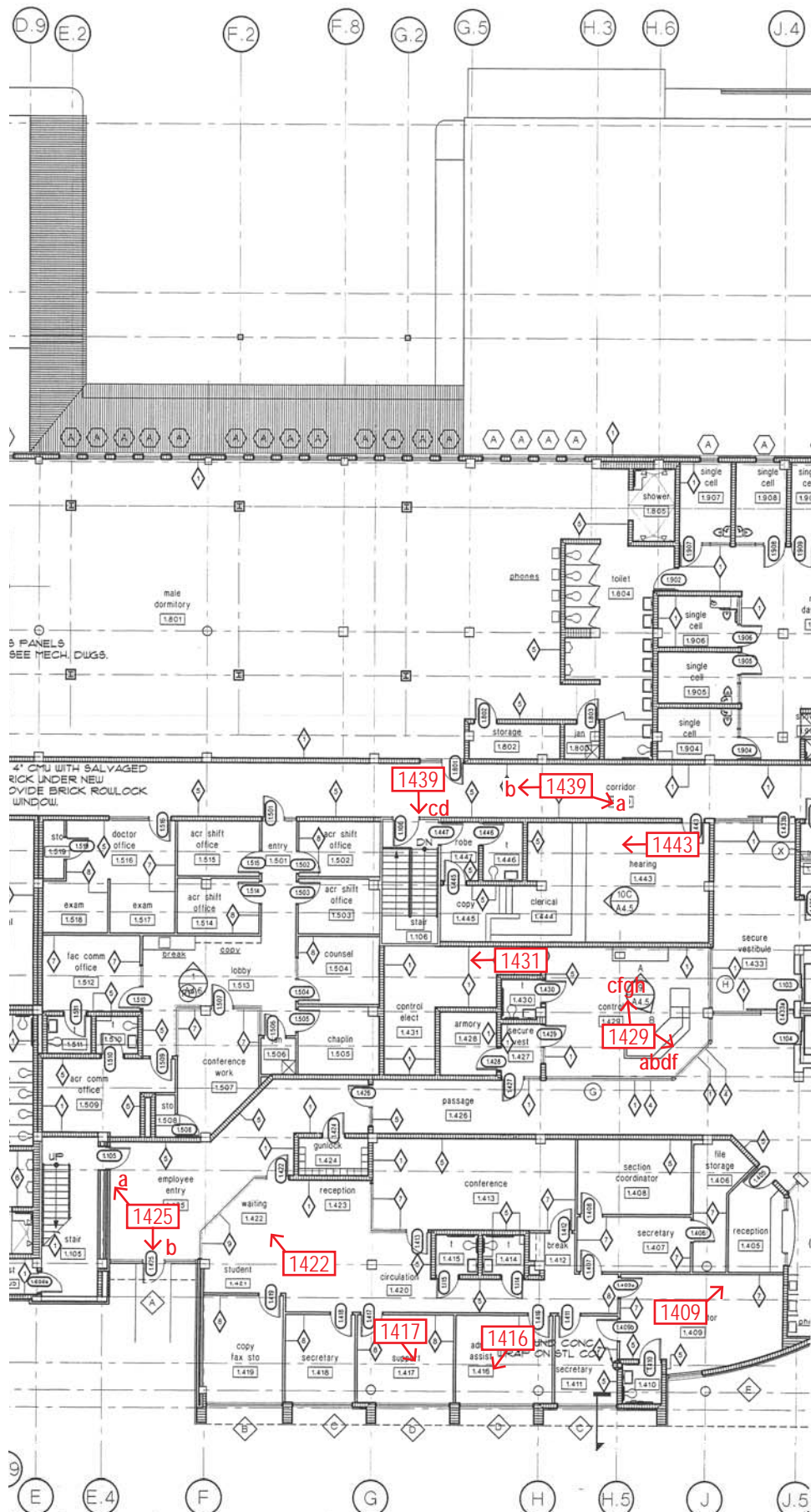
GENERAL NOTES:
1. COORDINATE PLACEMENT OF NEW GRAVITY SEWER WITH NEW STORM SEWER
ON SHEET C-3. ADJUST AS NECESSARY TO AVOID CONFLICTS.
2. CONSTRUCT MANHOLE #1 OVER AN EXISTING SEWER LINE. VERIFY ELEVATIONS
BEFORE TO CONSTRUCTION. NOTIFY ENGINEER OF ANY DISCREPANCIES.
3. SAW-CUT AND PATCH CONCRETE TO ROUTE NEW 4" FORCEMAIN.
4. COMPUTERS SHALL BE TUPPIN MONITOR BRAND, MODEL 3000-120A, 54P,
220 VOLT, 1725 RPM, 60 CYCLE, 3 PHASE.
5. FOR CONSTRUCTION OF COMMUNITER MANHOLE COORDINATE WITH COMMUNITER
MANUFACTURE. INSTALL COMMUNITER PER MANUFACTURE SPECIFICATIONS.
6. COORDINATE PLACEMENT OF COMMUNITER AND LIFT STATION CONTROL PANELS
WITH ARCHITECT.

APPENDIX B

ARCHITECTURAL FIELD OBSERVATIONS & PHOTOS

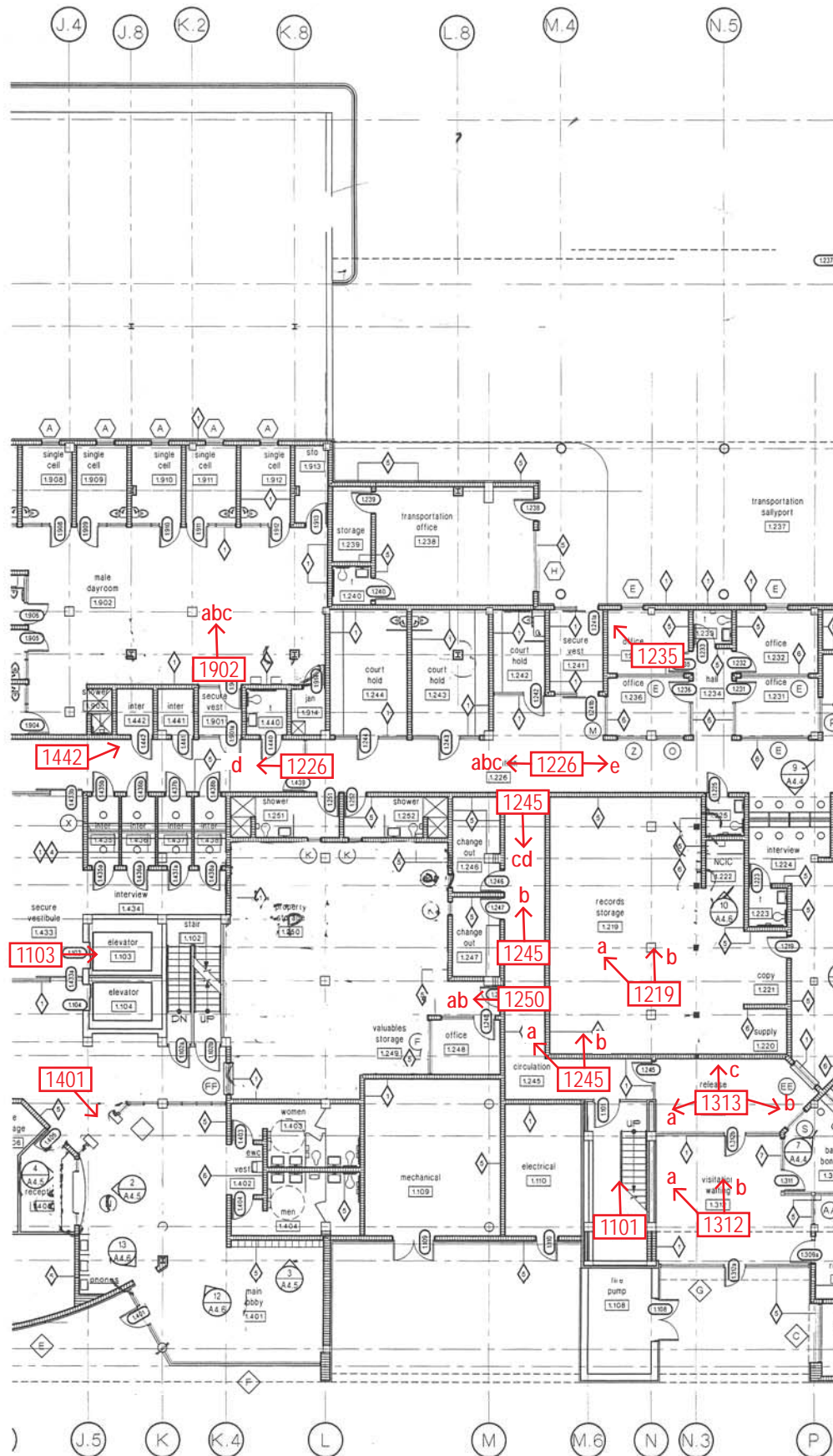
This is a detailed architectural floor plan of a building, likely a school or institutional structure, showing various rooms, corridors, and service areas. The plan is overlaid with a grid system. The horizontal grid is labeled with letters G.2 through L.8 at the top and G.3 through M at the bottom. The vertical grid is labeled with letters H.3, H.6, J.4, J.6, K.2, K.4, L, and M at the top, and G.3, H, J, J.6, K, K.4, L, and M at the bottom. The plan includes numerous rooms, each identified by a number in a box (e.g., 0.107, 0.110, 0.111, 0.305, 0.304, 0.303, 0.302, 0.306, 0.207, 0.208, 0.206, 0.205, 0.202, 0.201, 0.204, 0.203, 0.209, 0.210, 0.211, 0.212, 0.213, 0.214, 0.215, 0.216, 0.217, 0.218, 0.221, 0.222, 0.223, 0.224, 0.418, 0.419, 0.420, 0.421, 0.407, 0.106, 0.105, 0.102, 0.103, 0.104). Corridors and service areas are also labeled with numbers (e.g., 0.200, 0.201, 0.202, 0.203, 0.204, 0.205, 0.206, 0.207, 0.208, 0.209, 0.210, 0.211, 0.212, 0.213, 0.214, 0.215, 0.216, 0.217, 0.218, 0.221, 0.222, 0.223, 0.224). A red callout '0306 abcd' points to a specific area in the upper right quadrant of the plan, near room 0.306. The plan also shows various structural elements like walls, doors, windows, and stairs. Dimensions are provided for many of the rooms and corridors, such as 11'-4", 9'-4", 14'-8", 15'-4", 10'-0", 11'-4", 13'-4", 8'-0", 3'-4", 8'-0", 10'-0", 11'-0", 12'-0", 13'-0", 14'-0", 15'-0", 16'-0", 17'-0", 18'-0", 19'-0", 20'-0", 21'-0", 22'-0", 23'-0", 24'-0", 25'-0", 26'-0", 27'-0", 28'-0", 29'-0", 30'-0", 31'-0", 32'-0", 33'-0", 34'-0", 35'-0", 36'-0", 37'-0", 38'-0", 39'-0", 40'-0", 41'-0", 42'-0", 43'-0", 44'-0", 45'-0", 46'-0", 47'-0", 48'-0", 49'-0", 50'-0", 51'-0", 52'-0", 53'-0", 54'-0", 55'-0", 56'-0", 57'-0", 58'-0", 59'-0", 60'-0", 61'-0", 62'-0", 63'-0", 64'-0", 65'-0", 66'-0", 67'-0", 68'-0", 69'-0", 70'-0", 71'-0", 72'-0", 73'-0", 74'-0", 75'-0", 76'-0", 77'-0", 78'-0", 79'-0", 80'-0", 81'-0", 82'-0", 83'-0", 84'-0", 85'-0", 86'-0", 87'-0", 88'-0", 89'-0", 90'-0", 91'-0", 92'-0", 93'-0", 94'-0", 95'-0", 96'-0", 97'-0", 98'-0", 99'-0", 100'-0".

Architectural floor plan of a building with various rooms and annotations. The plan includes a grid system with letters A through E and numbers 1 through 10. Rooms are labeled with numbers and names, such as "male dormitory 1701", "classification office 1525", "resource break 1520", and "secure vest 1530". Red annotations highlight specific areas: "1601" with arrows "abc" and "d", "1701" with arrow "h", "1439" with arrow "g", "1524" with arrow "g", "1601" with arrow "ef", and "1105" with arrow "star". A note on the right side reads: "LOCATE ACCESS PANELS AT EACH DUCT, SEE MECH. DWGS."

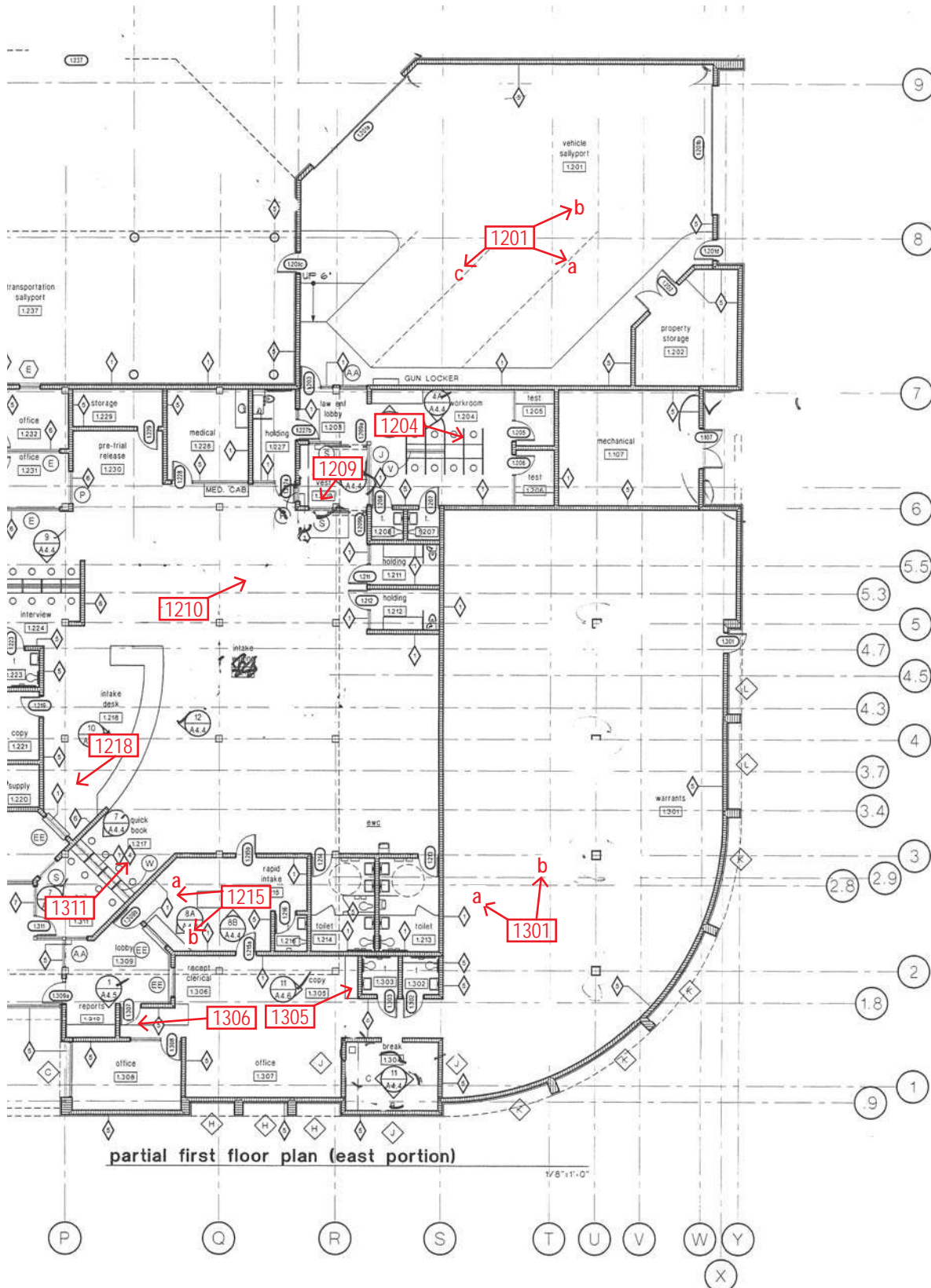


Escambia County Jail CBD

Photos of Current Conditions

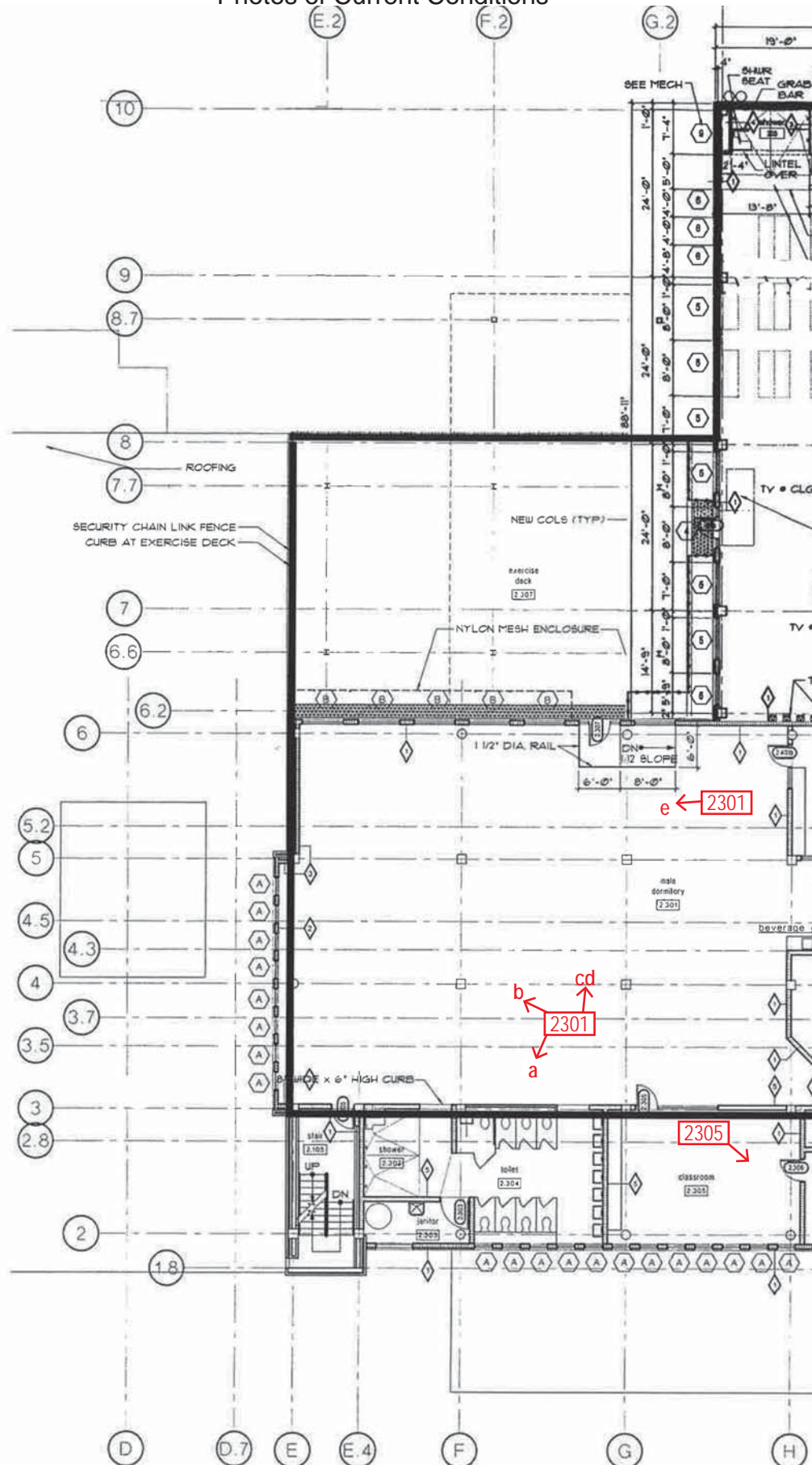


Escambia County Jail CBD Photos of Current Conditions

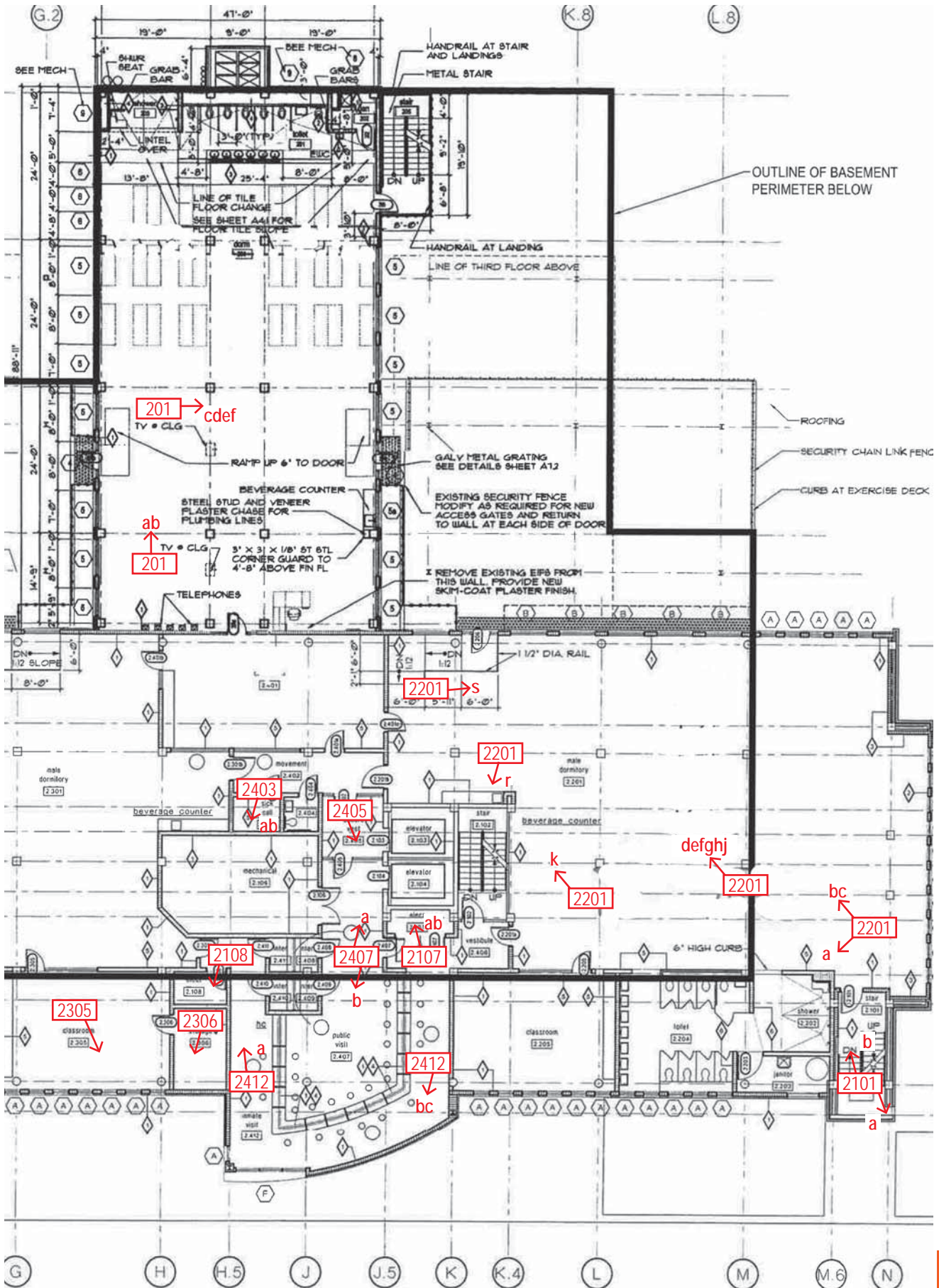


Escambia County Jail CBD

Photos of Current Conditions

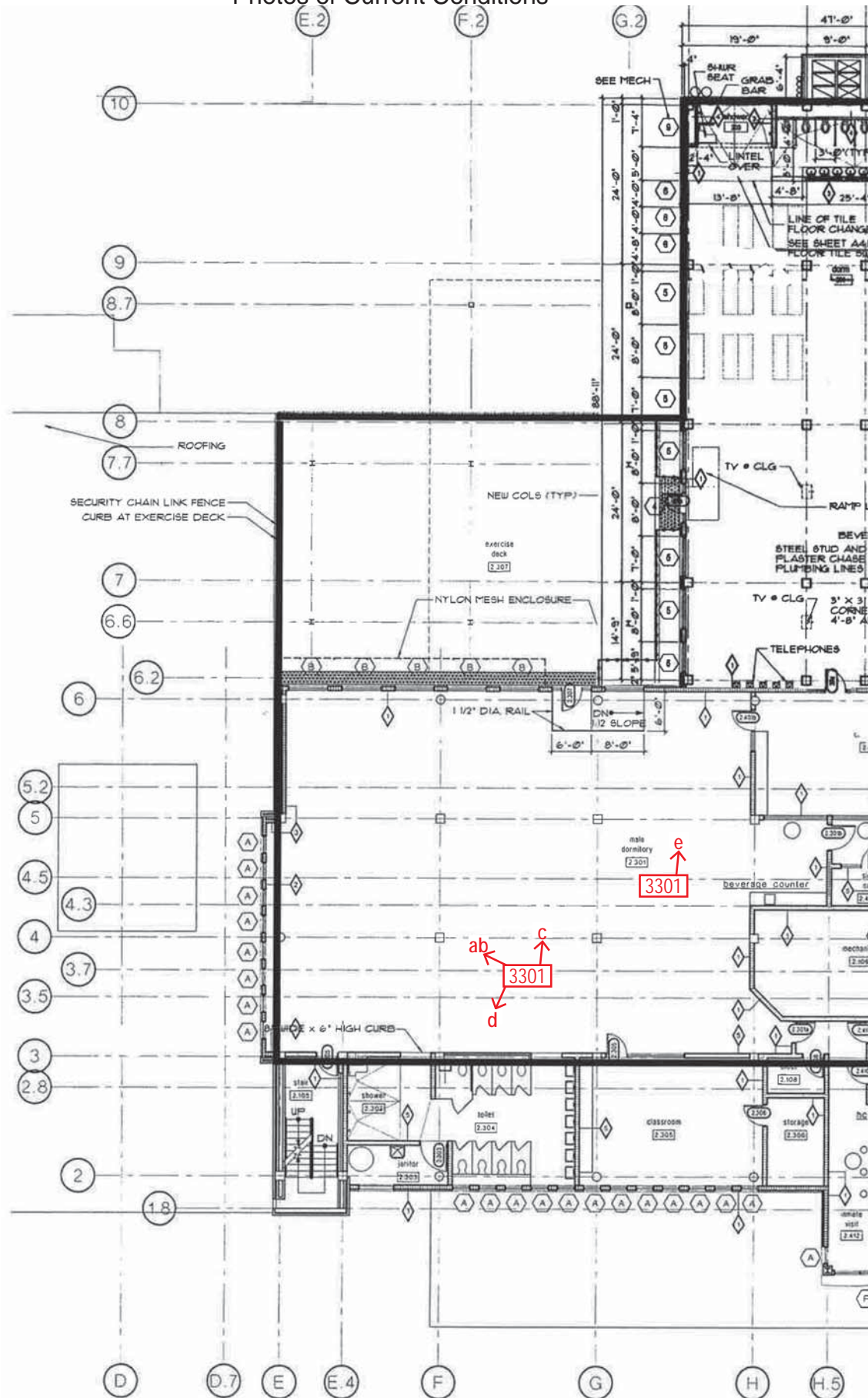


Escambia County Jail CBD Photos of Current Conditions



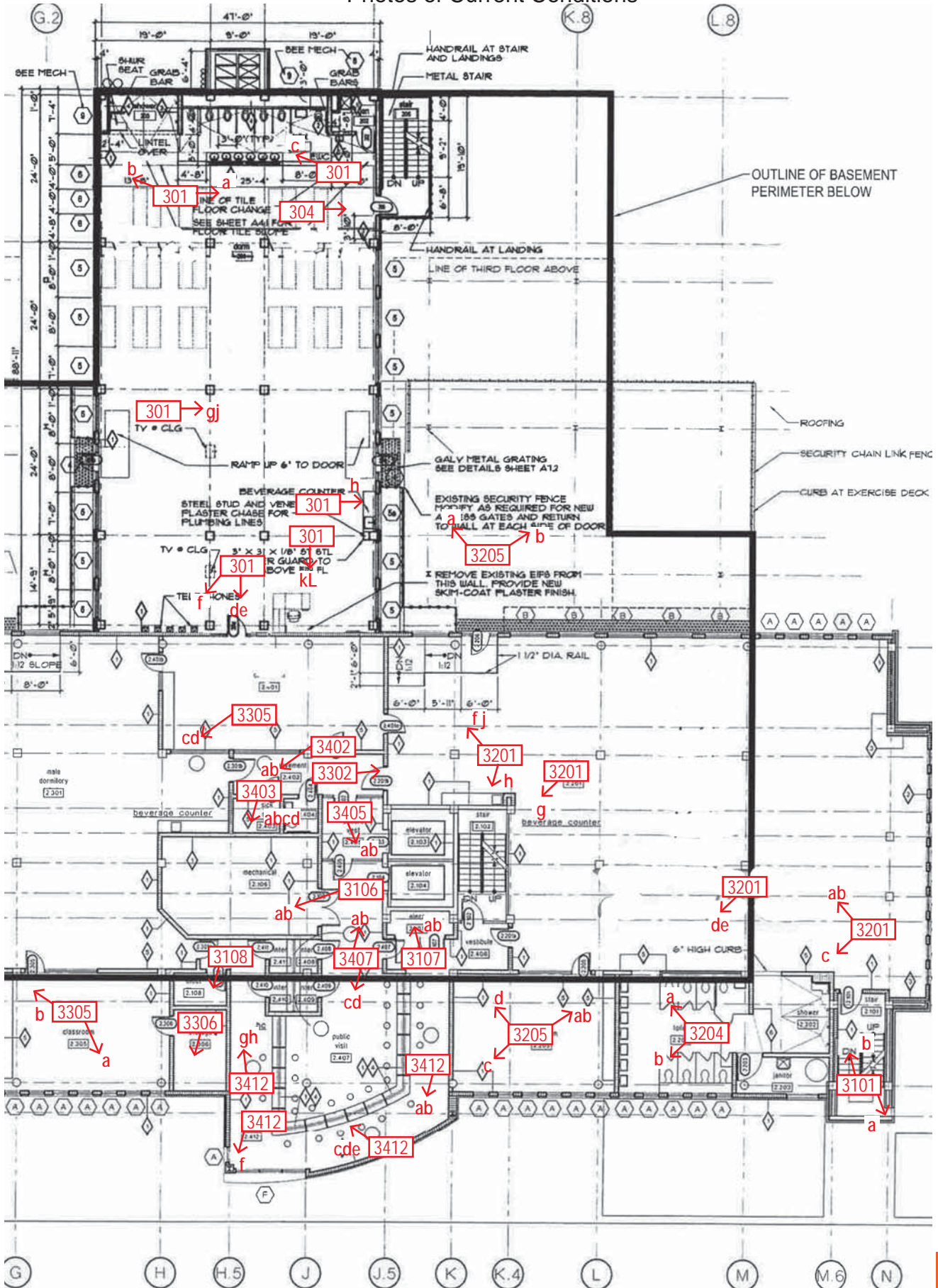
Escambia County Jail CBD

Photos of Current Conditions

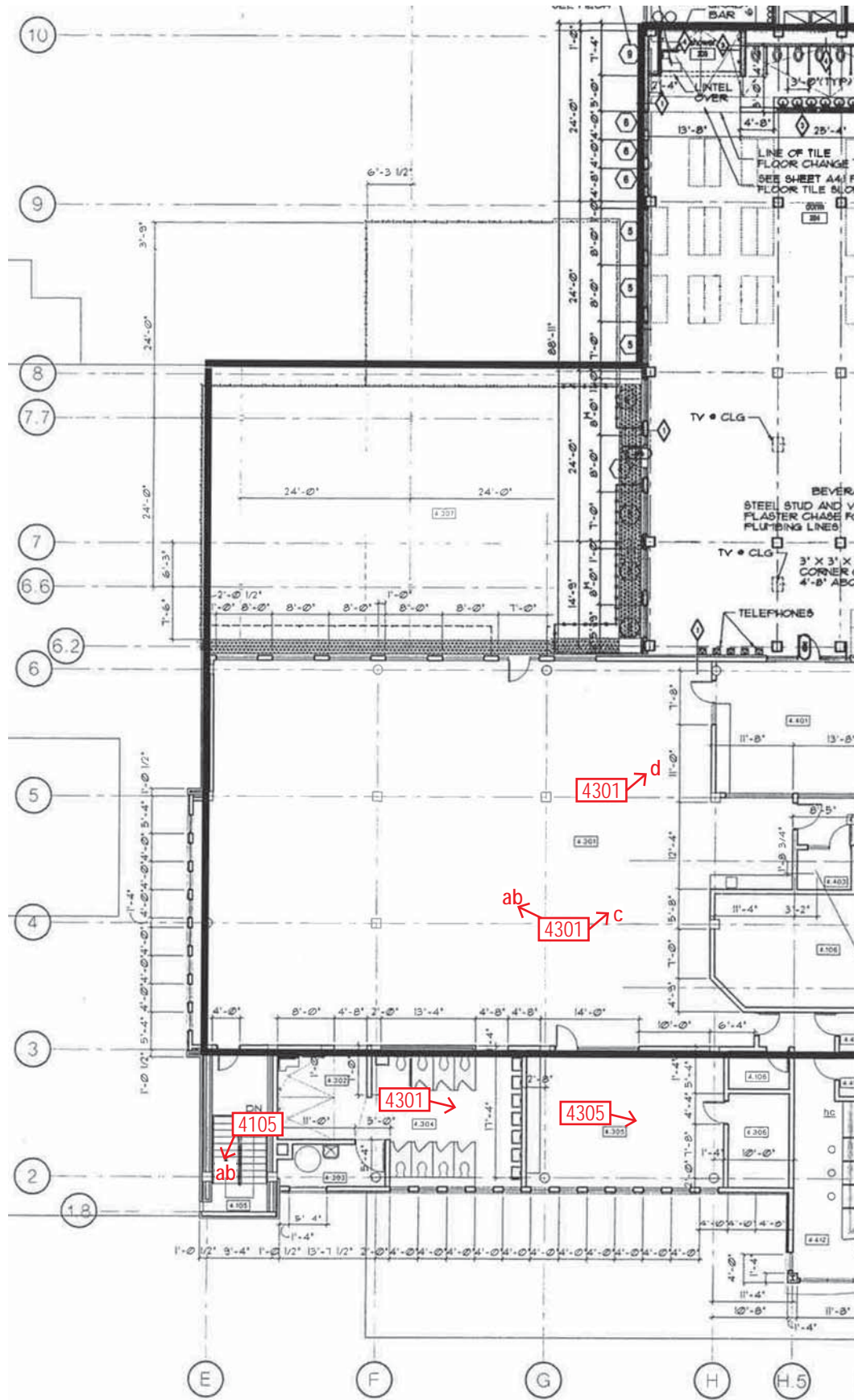


Escambia County Jail CBD

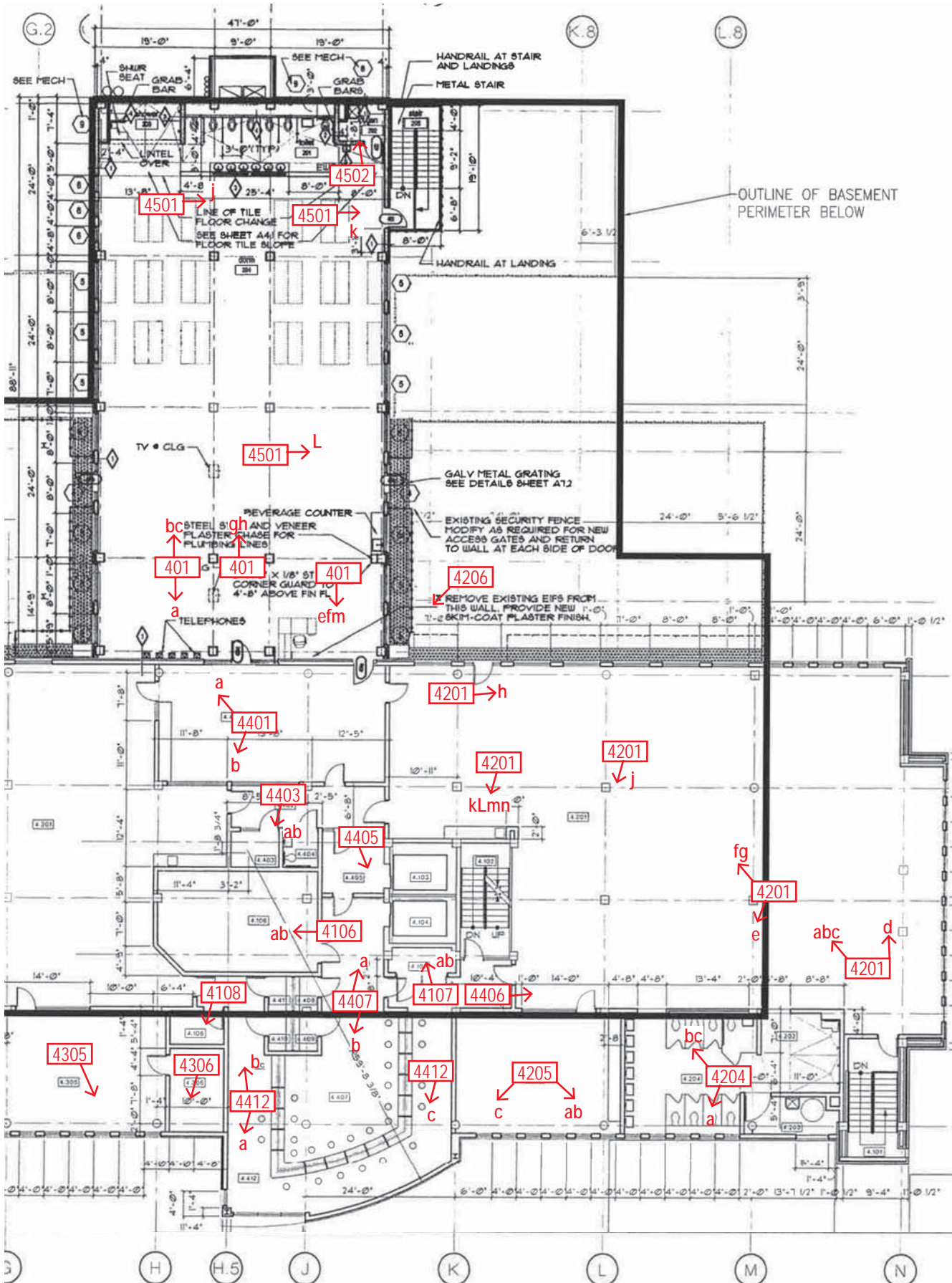
Photos of Current Conditions



Escambia County Jail CBD Photos of Current Conditions



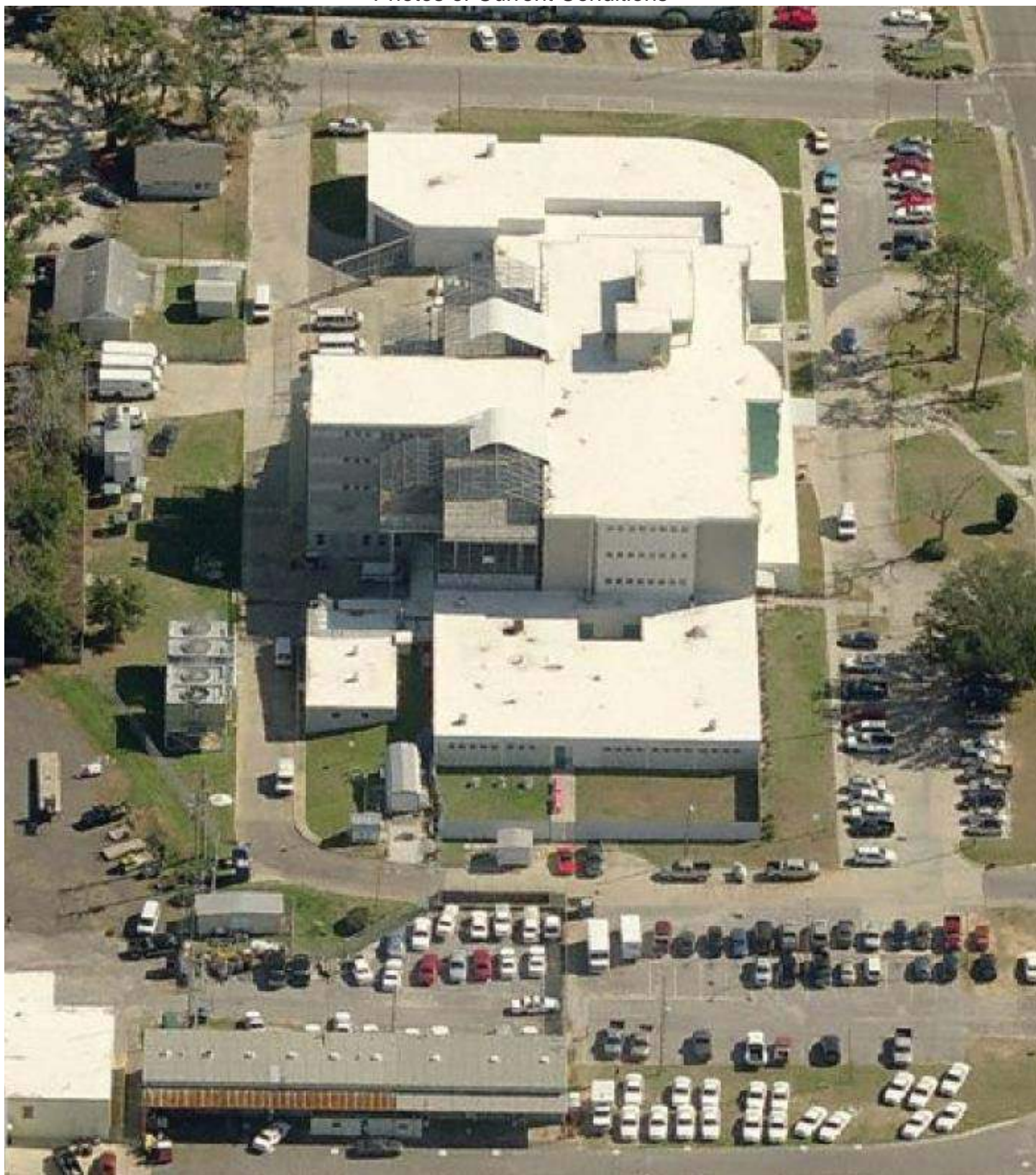
Escambia County Jail CBD Photos of Current Conditions



Escambia County Jail CBD Photos of Current Conditions



Escambia County Jail CBD
Photos of Current Conditions



Escambia County Jail CBD
Photos of Current Conditions



BASEMENT LEVEL PHOTOS



Photo # - 0410a

Basement Level

Room 0.410



Photo # - 0410b

Basement Level

Room 0.410



Photo # - 0101a

Basement Level

Room 0.101a



Photo # - 0101b

Basement Level

Room 0.101a



Photo # - 0101c

Basement Level

Room 0.101a



Photo # - 0101d

Basement Level

Room 0.101a



Photo # - 0101e

Basement Level

Room 0.101a



Photo # - 0101f

Basement Level

Room 0.101a



Photo # - 0306a

Basement Level

Room 0.306



Photo # - 0306b

Basement Level

Room 0.306



Photo # - 0306c

Basement Level

Room 0.306



Photo # - 0306d

Basement Level

Room 0.306

FIRST LEVEL PHOTOS



Photo # - 1101

First Level

Room 1101



Photo # - 1103

First Level

Room 1103



Photo # - 1105

First Level

Room 1105



Photo # - 1106

First Level

Room 1106



Photo # - 1201a

First Level

Room 1201



Photo # - 1201b

First Level

Room 1201



Photo # - 1201c

First Level

Room 1201

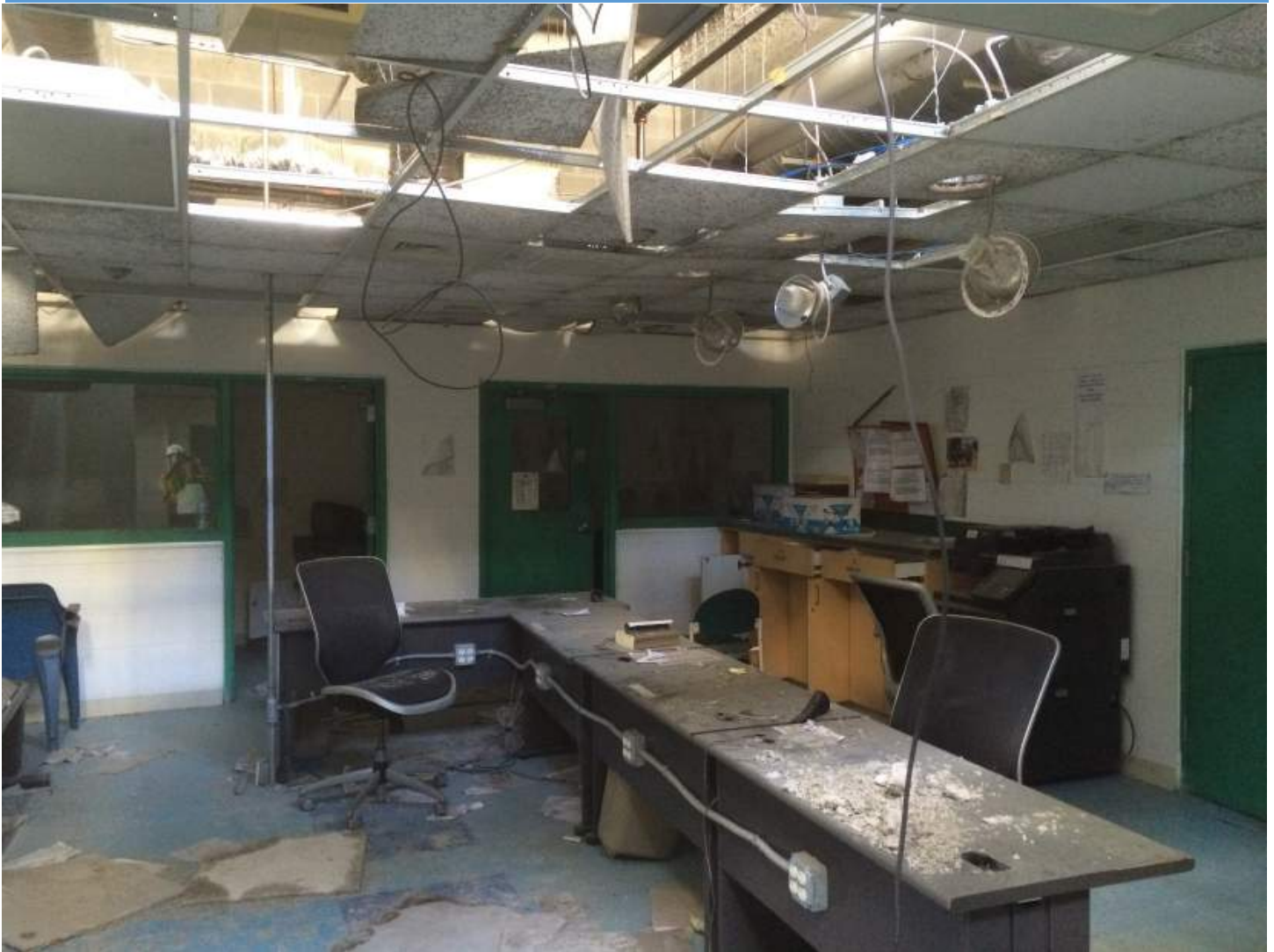


Photo # - 1204

First Level

Room 1204



Photo # - 1209

First Level

Room 1209



Photo # - 1210

First Level

Room 1210



Photo # - 1212a

First Level

Room 1212



Photo # - 1212b

First Level

Room 1212



Photo # - 1215a

First Level

Room 1215



Photo # - 1215b

First Level

Room 1215



Photo # - 1218

First Level

Room 1218



Photo # - 1219a

First Level

Room 1219



Photo # - 1219b

First Level

Room 1219



Photo # - 1226a

First Level

Room 1226



Photo # - 1226b

First Level

Room 1226



Photo # - 1226c

First Level

Room 1226



Photo # - 1226d

First Level

Room 1226



Photo # - 1226e

First Level

Room 1226



Photo # - 1226f

First Level

Room 1226

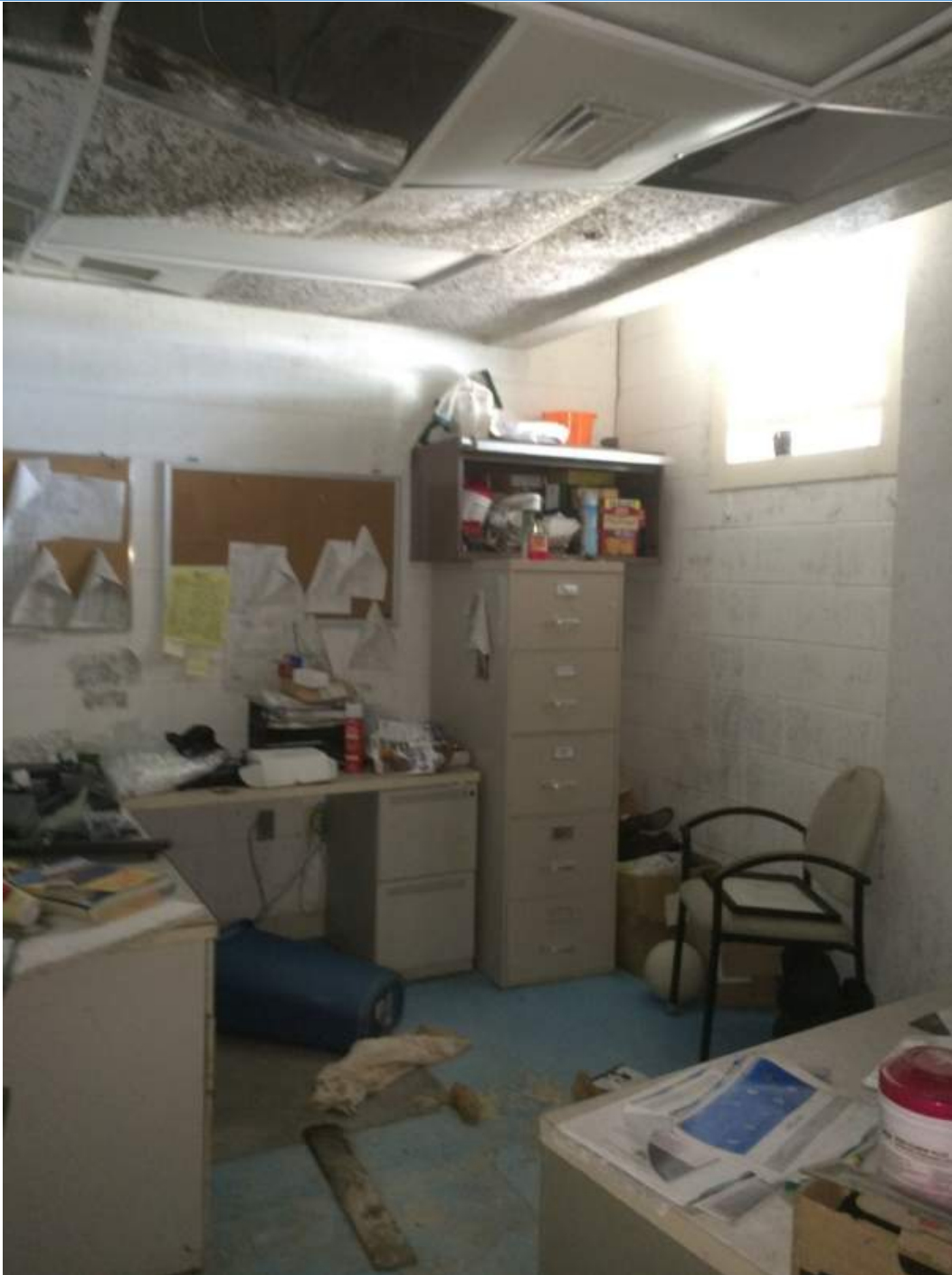


Photo # - 1235

First Level

Room 1235



Photo # - 1239

First Level

Room 1239



Photo # - 1245a

First Level

Room 1245



Photo # - 1245b

First Level

Room 1245



Photo # - 1245c

First Level

Room 1245



Photo # - 1245d

First Level

Room 1245



Photo # - 1246

First Level

Room 1246



Photo # - 1249a

First Level

Room 1249



Photo # - 1249b

First Level

Room 1249



Photo # - 1250a

First Level

Room 1250



Photo # - 1250b

First Level

Room 1250



Photo # - 1301a

First Level

Room 1301



Photo # - 1301b

First Level

Room 1301



Photo # - 1303

First Level

Room 1303



Photo # - 1305

First Level

Room 1305



Photo # - 1306

First Level

Room 1306



Photo # - 1311

First Level

Room 1311



Photo # - 1312a

First Level

Room 1312



Photo # - 1312b

First Level

Room 1312



Photo # - 1313a

First Level

Room 1313



Photo # - 1313b

First Level

Room 1313



Photo # - 1313c

First Level

Room 1313



Photo # - 1401a

First Level

Room 1401



Photo # - 1401b

First Level

Room 1401



Photo # - 1409

First Level

Room 1409



Photo # - 1416

First Level

Room 1416



Photo # - 1417

First Level

Room 1417



Photo # - 1422

First Level

Room 1422



Photo # - 1425a

First Level

Room 1425



Photo # - 1425b

First Level

Room 1425



Photo # - 1426a

First Level

Room 1426



Photo # - 1426b

First Level

Room 1426



Photo # - 1429a

First Level

Room 1429



Photo # - 1429b

First Level

Room 1429



Photo # - 1429c

First Level

Room 1429



Photo # - 1429d

First Level

Room 1429



Photo # - 1429e

First Level

Room 1429

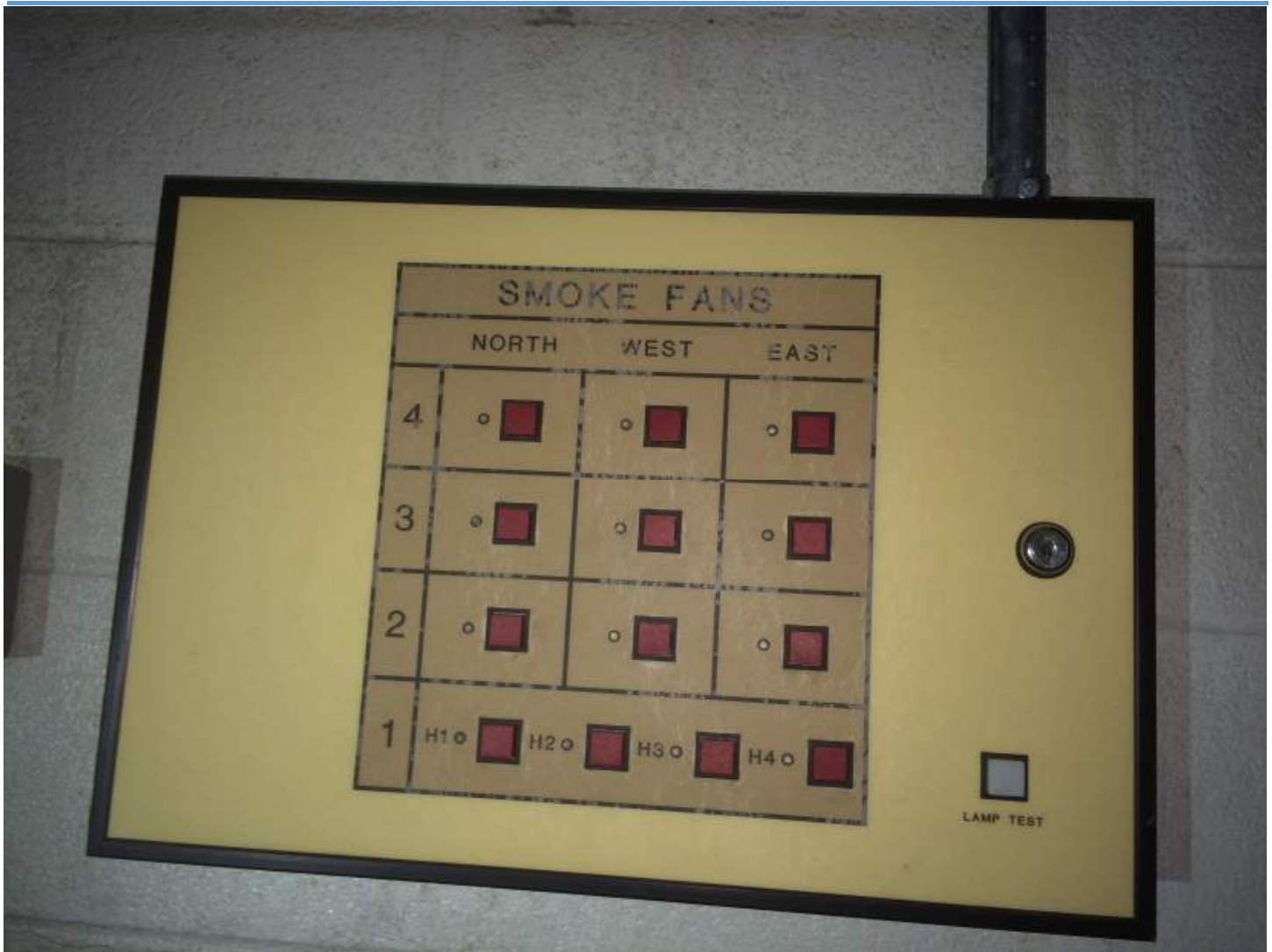


Photo # - 1429f

First Level

Room 1429



Photo # - 1429g

First Level

Room 1429



Photo # - 1429h

First Level

Room 1429



Photo # - 1431

First Level

Room 1431



Photo # - 1433a

First Level

Room 1433



Photo # - 1433b

First Level

Room 1433



Photo # - 1439a

First Level

Room 1439



Photo # - 1439b

First Level

Room 1439



Photo # - 1439c

First Level

Room 1439



Photo # - 1439d

First Level

Room 1439



Photo # - 1439e

First Level

Room 1439



Photo # - 1439f

First Level

Room 1439



Photo # - 1439g

First Level

Room 1439



Photo # - 1439h

First Level

Room 1439



Photo # - 1439j

First Level

Room 1439



Photo # - 1439k

First Level

Room 1439



Photo # - 1442

First Level

Room 1442

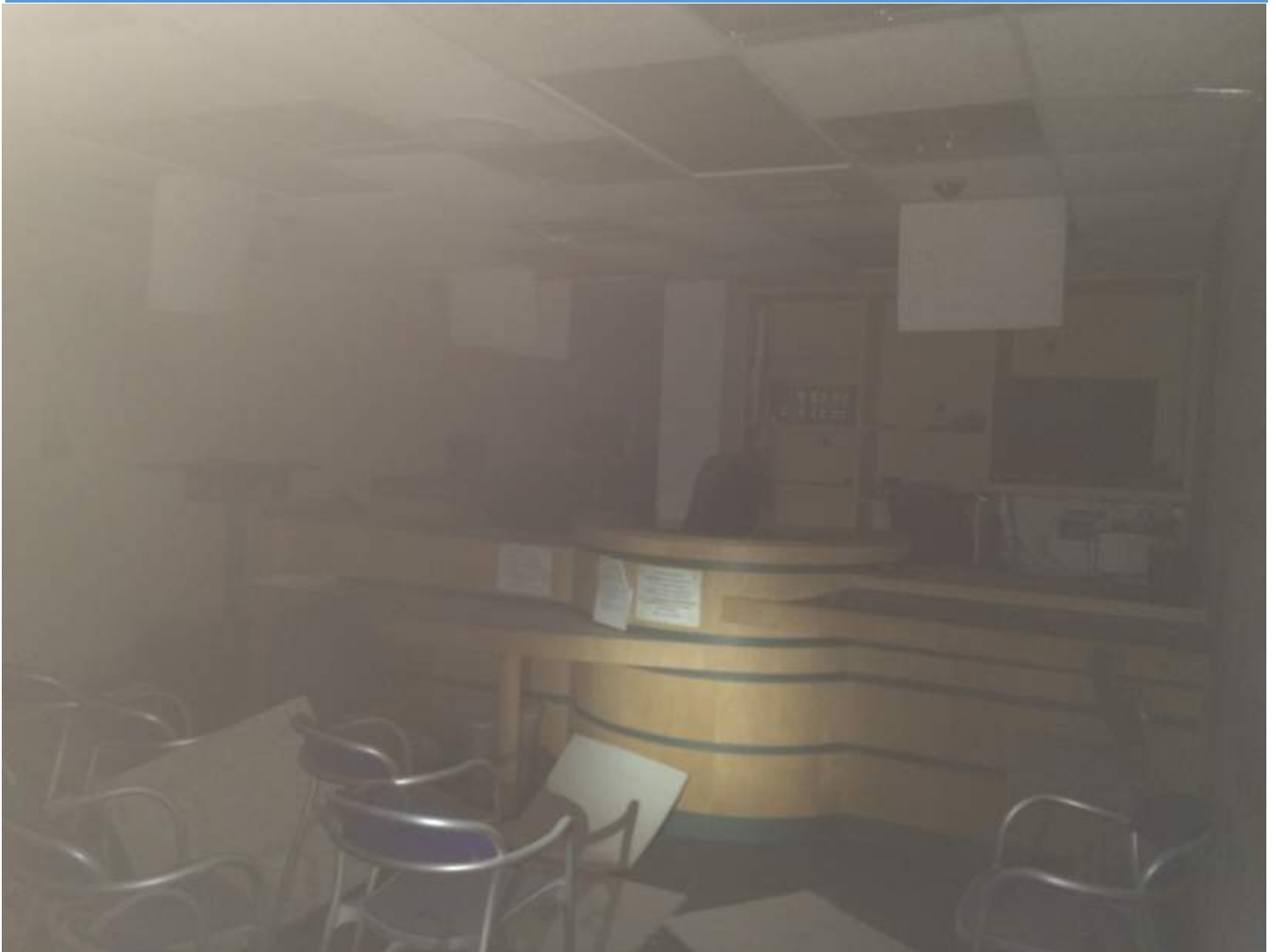


Photo # - 1443

First Level

Room 1443



Photo # - 1501

First Level

Room 1501



Photo # - 1524

First Level

Room 1524



Photo # - 1601a

First Level

Room 1601



Photo # - 1601b

First Level

Room 1601



Photo # - 1601c

First Level

Room 1601



Photo # - 1601d

First Level

Room 1601



Photo # - 1601e

First Level

Room 1601



Photo # - 1601f

First Level

Room 1601



Photo # - 1601g

First Level

Room 1601



Photo # - 1701

First Level

Room 1701



Photo # - 1902a

First Level

Room 1902



Photo # - 1902b

First Level

Room 1902



Photo # - 1902c

First Level

Room 1902



Photo # - 1902d

First Level

Room 1902

SECOND LEVEL PHOTOS



Photo # - 201a

Second Level

Room 201



Photo # - 201b

Second Level

Room 201



Photo # - 201c

Second Level

Room 201



Photo # - 201d

Second Level

Room 201



Photo # - 201e

Second Level

Room 201

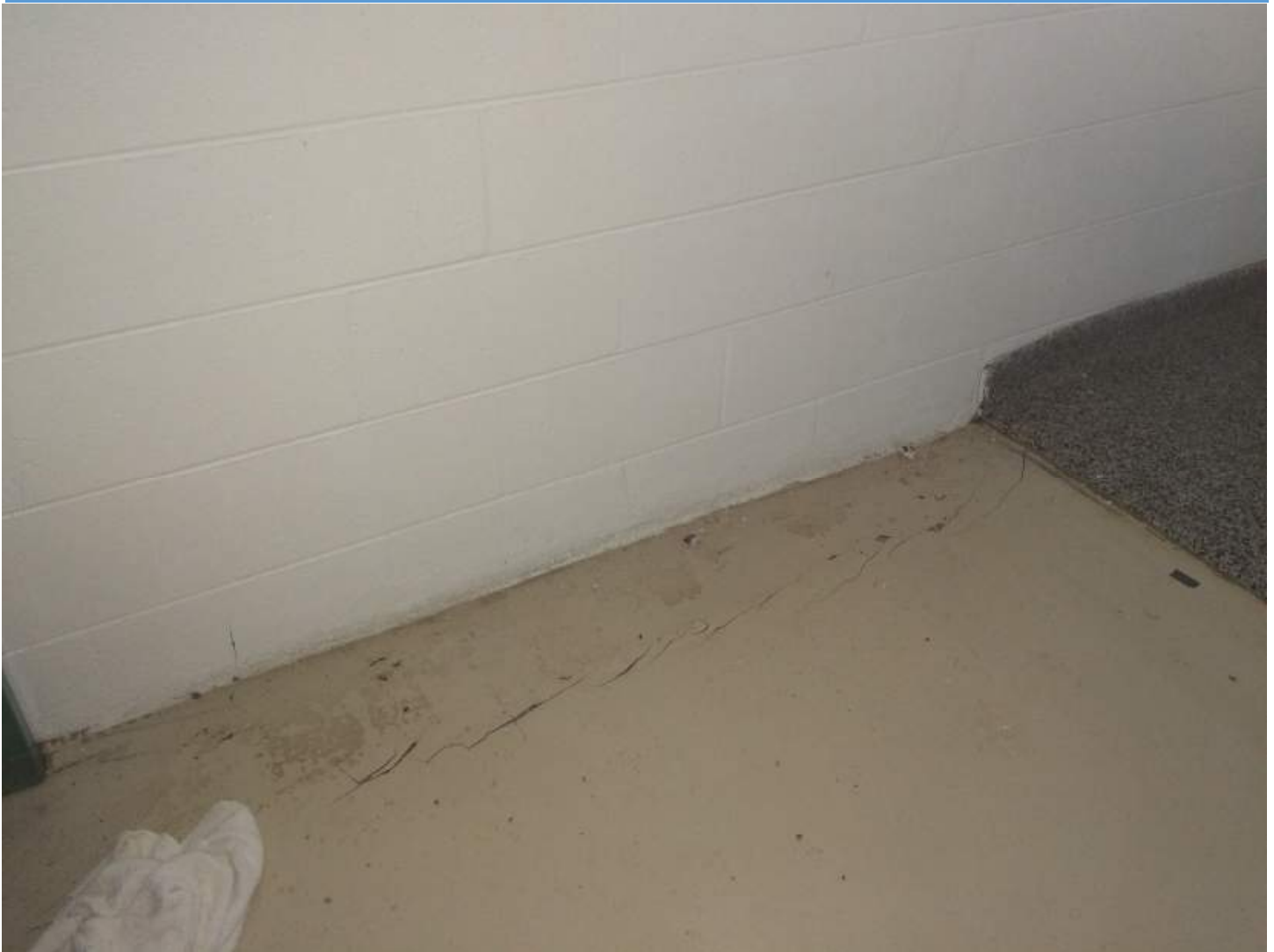


Photo # - 201f

Second Level

Room 201



Photo # - 202

Second Level

Room 202



Photo # - 2101a

Second Level

Room 2101

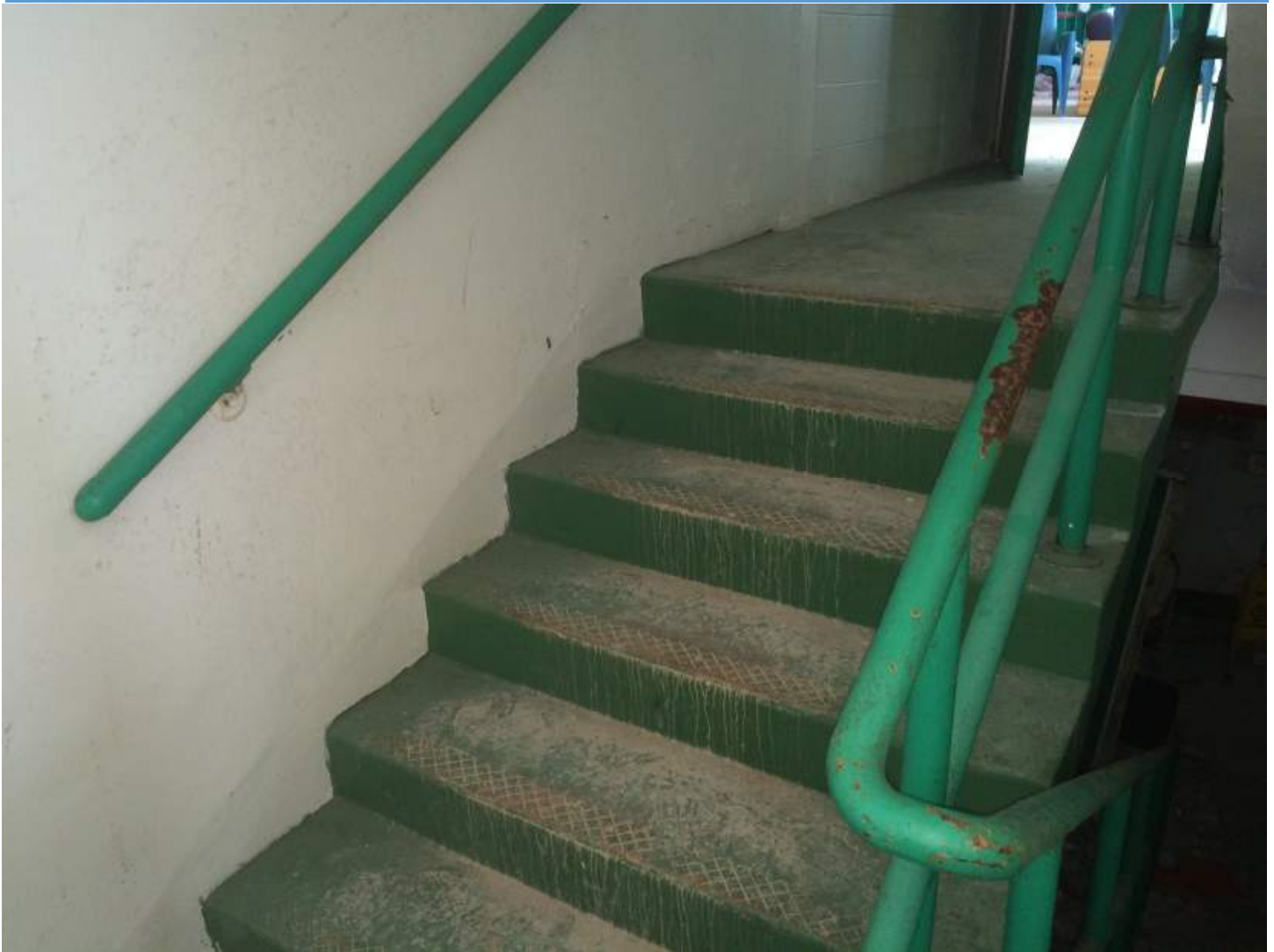


Photo # - 2101b

Second Level

Room 2101



Photo # - 2107a

Second Level

Room 2107



Photo # - 2107b

Second Level

Room 2107



Photo # - 2108

Second Level

Room 2108



Photo # - 2201a

Second Level

Room 2201



Photo # - 2201b

Second Level

Room 2201



Photo # - 2201c

Second Level

Room 2201



Photo # - 2201d

Second Level

Room 2201



Photo # - 2201e

Second Level

Room 2201



Photo # - 2201f

Second Level

Room 2201



Photo # - 2201g

Second Level

Room 2201



Photo # - 2201h

Second Level

Room 2201



Photo # - 2201j

Second Level

Room 2201



Photo # - 2201k

Second Level

Room 2201



Photo # - 2201L

Second Level

Room 2201



Photo # - 2201m

Second Level

Room 2201



Photo # - 2201n

Second Level

Room 2201



Photo # - 2201p

Second Level

Room 2201



Photo # - 2201q

Second Level

Room 2201



Photo # - 2201r

Second Level

Room 2201



Photo # - 2201s

Second Level

Room 2201



Photo # - 2204

Second Level

Room 2204



Photo # - 2205a

Second Level

Room 2205



Photo # - 2205b

Second Level

Room 2205



Photo # - 2206

Second Level

Room 2206



Photo # - 2301a

Second Level

Room 2301



Photo # - 2301b

Second Level

Room 2301



Photo # - 2301c

Second Level

Room 2301



Photo # - 2301d

Second Level

Room 2301



Photo # - 2301e

Second Level

Room 2301



Photo # - 2305

Second Level

Room 2305



Photo # - 2306

Second Level

Room 2306



Photo # - 2401a

Second Level

Room 2401



Photo # - 2401b

Second Level

Room 2401



Photo # - 2401c

Second Level

Room 2401



Photo # - 2403a

Second Level

Room 2403



Photo # - 2403b

Second Level

Room 2403



Photo # - 2405

Second Level

Room 2405



Photo # - 2406

Second Level

Room 2406



Photo # - 2407a

Second Level

Room 2407



Photo # - 2407b

Second Level

Room 2407



Photo # - 2412a

Second Level

Room 2412



Photo # - 2412b

Second Level

Room 2412



Photo # - 2412c

Second Level

Room 2412

THIRD LEVEL PHOTOS



Photo # - 301a

Third Level

Room 301



Photo # - 301b

Third Level

Room 301



Photo # - 301c

Third Level

Room 301



Photo # - 301d

Third Level

Room 301



Photo # - 301e

Third Level

Room 301



Photo # - 301f

Third Level

Room 301



Photo # - 301g

Third Level

Room 301



Photo # - 301h

Third Level

Room 301



Photo # - 301j

Third Level

Room 301



Photo # - 301k

Third Level

Room 301



Photo # - 301L

Third Level

Room 301

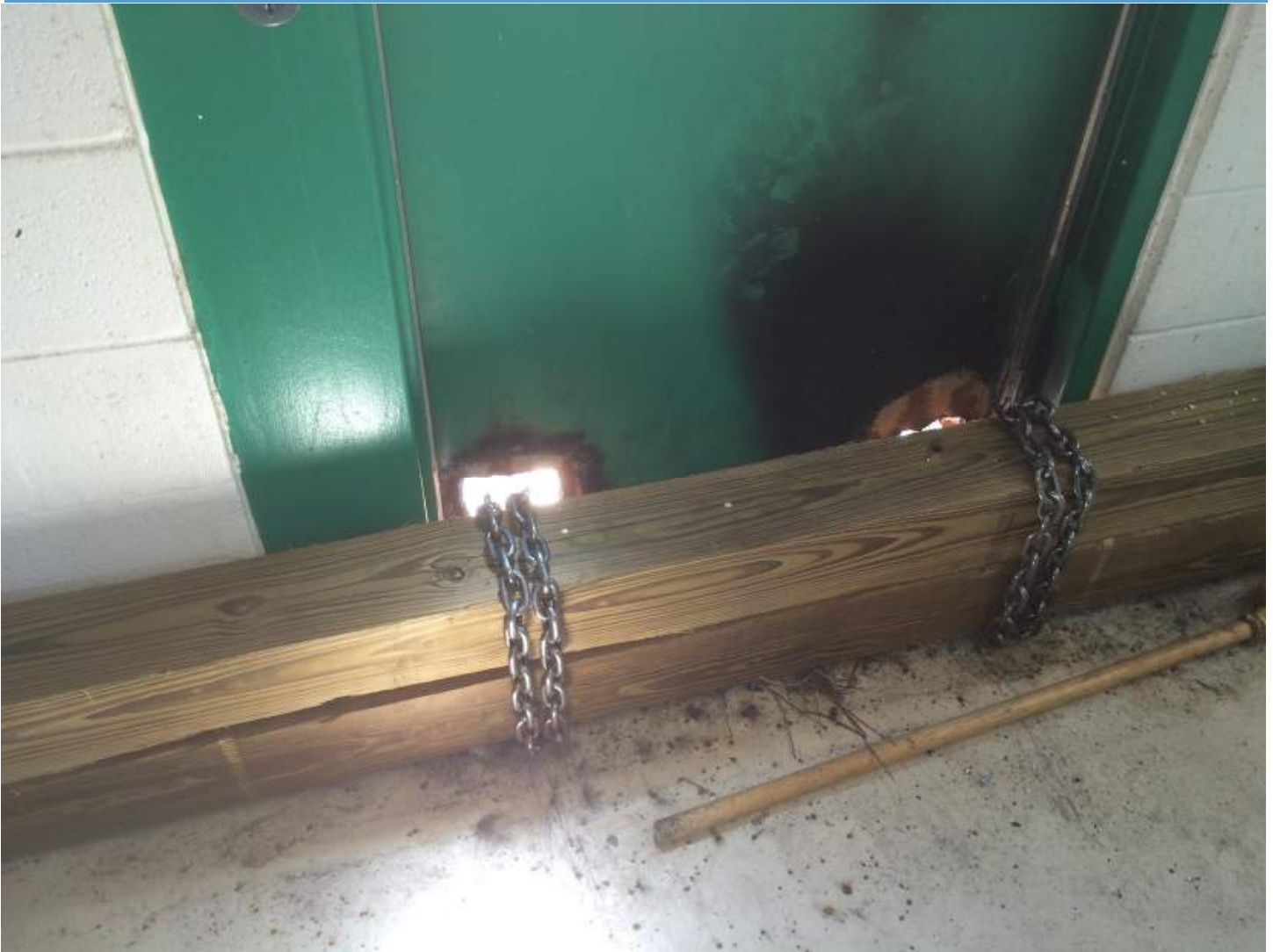


Photo # - 304

Third Level

Room 304



Photo # - 3106a

Third Level

Room 3106



Photo # - 3106b

Third Level

Room 3106



Photo # - 3107a

Third Level

Room 3107



Photo # - 3107b

Third Level

Room 3107



Photo # - 3108

Third Level

Room 3108



Photo # - 3201a

Third Level

Room 3201



Photo # - 3201b

Third Level

Room 3201



Photo # - 3201c

Third Level

Room 3201



Photo # - 3201d

Third Level

Room 3201



Photo # - 3201e

Third Level

Room 3201



Photo # - 3201f

Third Level

Room 3201



Photo # - 3201g

Third Level

Room 3201



Photo # - 3201h

Third Level

Room 3201



Photo # - 3201j

Third Level

Room 3201



Photo # - 3204a

Third Level

Room 3204



Photo # - 3204b

Third Level

Room 3204



Photo # - 3205a

Third Level

Room 3205



Photo # - 3205b

Third Level

Room 3205



Photo # - 3205c

Third Level

Room 3205



Photo # - 3205d

Third Level

Room 3205



Photo # - 3206a

Third Level

Room 3206



Photo # - 3206b

Third Level

Room 3206



Photo # - 3301a

Third Level

Room 3301



Photo # - 3301b

Third Level

Room 3301



Photo # - 3301c

Third Level

Room 3301



Photo # - 3301d

Third Level

Room 3301



Photo # - 3301e

Third Level

Room 3301



Photo # - 3302

Third Level

Room 3302



Photo # - 3304a

Third Level

Room 3304



Photo # - 3304b

Third Level

Room 3304



Photo # - 3304c

Third Level

Room 3304



Photo # - 3305a

Third Level

Room 3305



Photo # - 3305b

Third Level

Room 3305



Photo # - 3306

Third Level

Room 3306



Photo # - 3402a

Third Level

Room 3402



Photo # - 3402b

Third Level

Room 3402



Photo # - 3403a

Third Level

Room 3403



Photo # - 3403b

Third Level

Room 3403



Photo # - 3403c

Third Level

Room 3403



Photo # - 3403d

Third Level

Room 3403



Photo # - 3405a

Third Level

Room 3405



Photo # - 3405b

Third Level

Room 3405



Photo # - 3405c

Third Level

Room 3405



Photo # - 3405d

Third Level

Room 3405



Photo # - 3407a

Third Level

Room 3407



Photo # - 3407b

Third Level

Room 3407



Photo # - 3407c

Third Level

Room 3407



Photo # - 3407d

Third Level

Room 3407



Photo # - 3412a

Third Level

Room 3412



Photo # - 3412b

Third Level

Room 3412



Photo # - 3412c

Third Level

Room 3412



Photo # - 3412d

Third Level

Room 3412



Photo # - 3412e

Third Level

Room 3412



Photo # - 3412f

Third Level

Room 3412



Photo # - 3412g

Third Level

Room 3412



Photo # - 3412h

Third Level

Room 3412

FOURTH LEVEL PHOTOS



Photo # - 4105a

Fourth Level

Room 4105



Photo # - 4105b

Fourth Level

Room 4105



Photo # - 4106a

Fourth Level

Room 4106



Photo # - 4106b

Fourth Level

Room 4106



Photo # - 4107a

Fourth Level

Room 4107



Photo # - 4107b

Fourth Level

Room 4107



Photo # - 4108

Fourth Level

Room 4108



Photo # - 4201a

Fourth Level

Room 4201



Photo # - 4201b

Fourth Level

Room 4201



Photo # - 4201c

Fourth Level

Room 4201



Photo # - 4201d

Fourth Level

Room 4201



Photo # - 4201e

Fourth Level

Room 4201



Photo # - 4201f

Fourth Level

Room 4201



Photo # - 4201g

Fourth Level

Room 4201



Photo # - 4201h

Fourth Level

Room 4201



Photo # - 4201j

Fourth Level

Room 4201



Photo # - 4201k

Fourth Level

Room 4201



Photo # - 4201L

Fourth Level

Room 4201



Photo # - 4201m

Fourth Level

Room 4201



Photo # - 4201n

Fourth Level

Room 4201



Photo # - 4204a

Fourth Level

Room 4204



Photo # - 4204b

Fourth Level

Room 4204



Photo # - 4204c

Fourth Level

Room 4204



Photo # - 4205a

Fourth Level

Room 4205



Photo # - 4205b

Fourth Level

Room 4205



Photo # - 4205c

Fourth Level

Room 4205



Photo # - 4206

Fourth Level

Room 4206



Photo # - 4301a

Fourth Level

Room 4301



Photo # - 4301b

Fourth Level

Room 4301

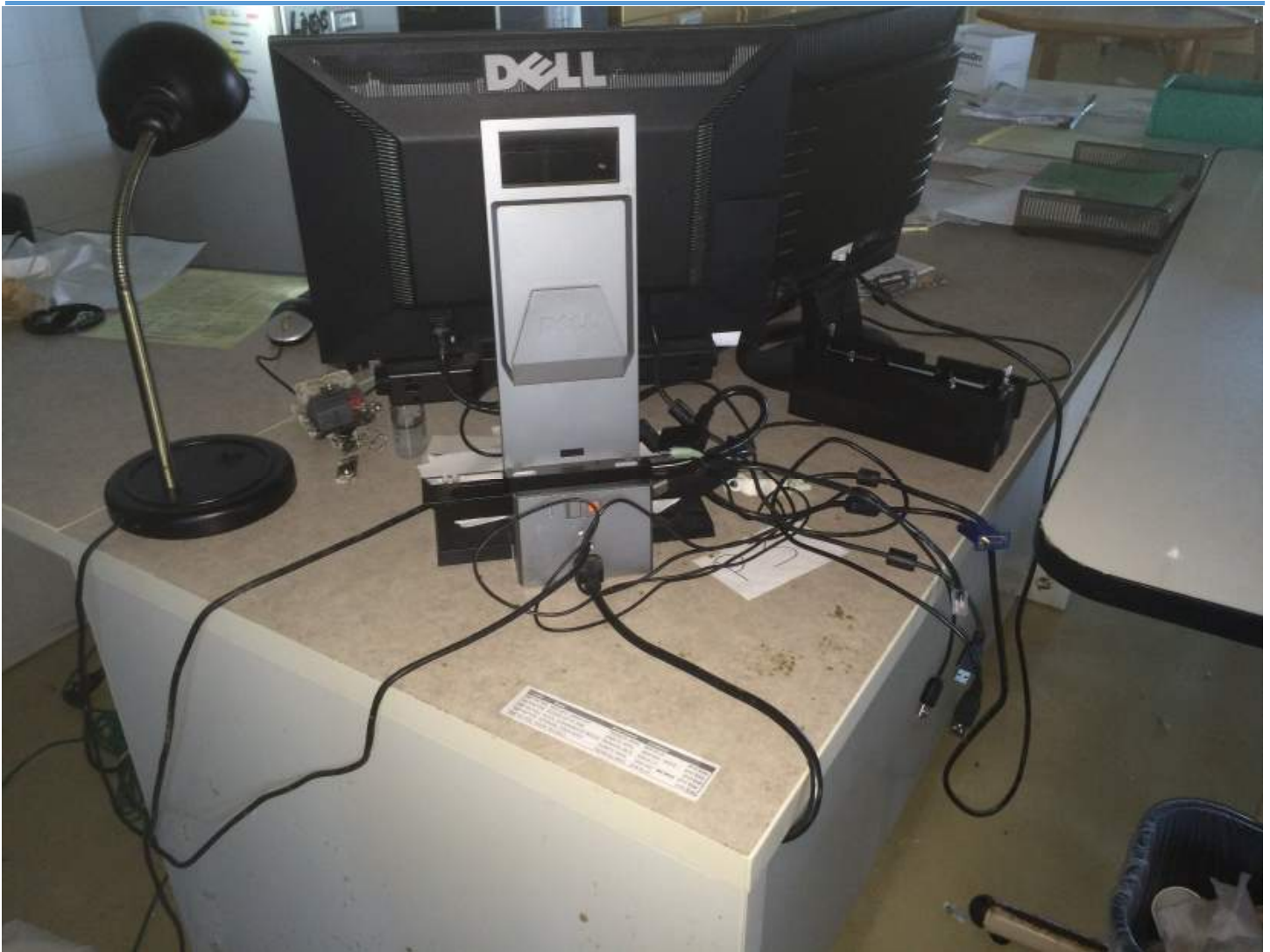


Photo # - 4301c

Fourth Level

Room 4301



Photo # - 4301d

Fourth Level

Room 4301



Photo # - 4304

Fourth Level

Room 4304



Photo # - 4305

Fourth Level

Room 4305



Photo # - 4306

Fourth Level

Room 4306



Photo # - 4401a

Fourth Level

Room 4401



Photo # - 4401b

Fourth Level

Room 4401

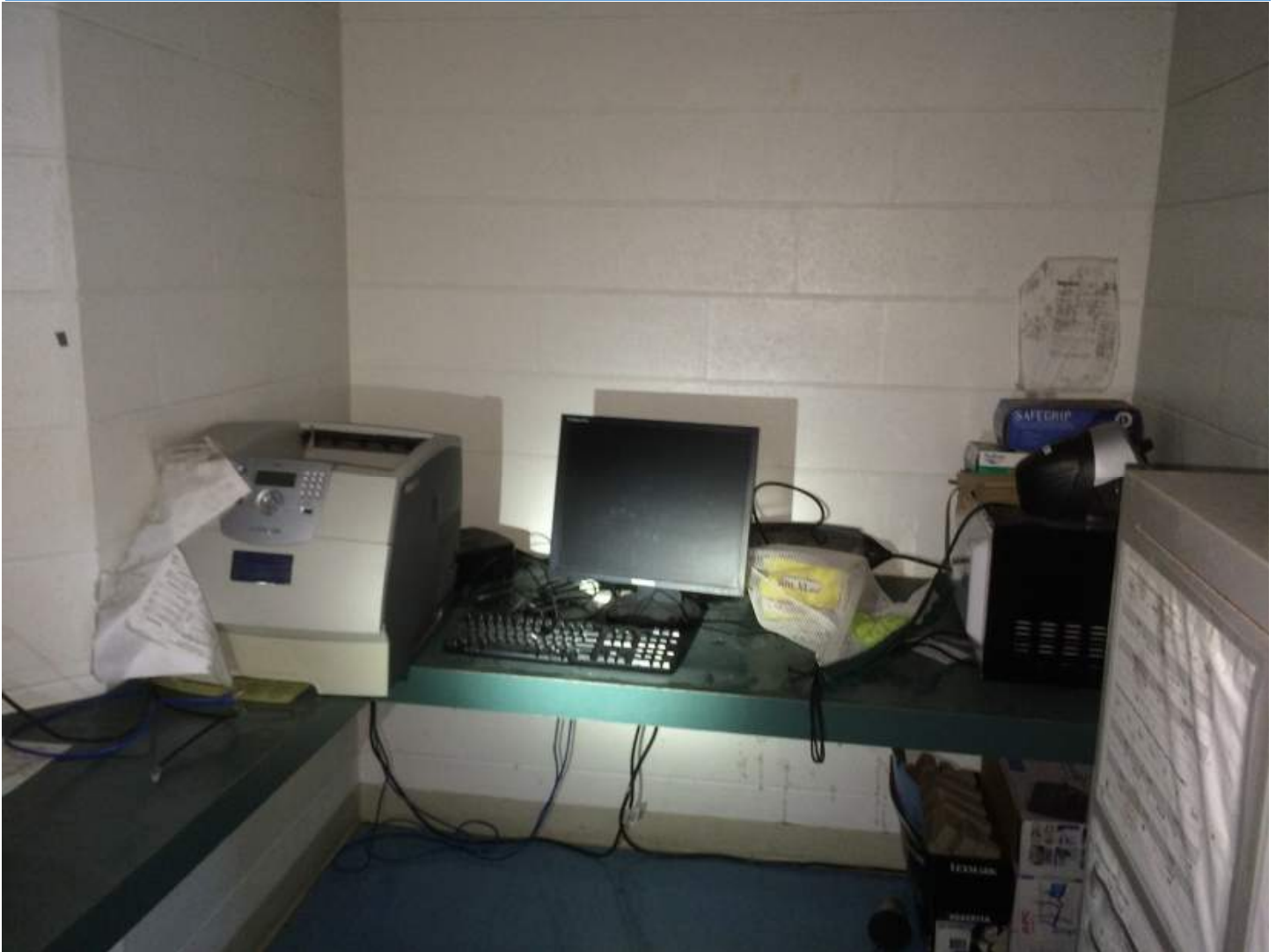


Photo # - 4403a

Fourth Level

Room 4403



Photo # - 4403b

Fourth Level

Room 4403



Photo # - 4405

Fourth Level

Room 4405



Photo # - 4406

Fourth Level

Room 4406



Photo # - 4407a

Fourth Level

Room 4407



Photo # - 4407b

Fourth Level

Room 4407



Photo # - 4412a

Fourth Level

Room 4412



Photo # - 4412b

Fourth Level

Room 4412



Photo # - 4412c

Fourth Level

Room 4412



Photo # - 4501a

Fourth Level

Room 4501



Photo # - 4501b

Fourth Level

Room 4501



Photo # - 4501c

Fourth Level

Room 4501



Photo # - 4501d

Fourth Level

Room 4501



Photo # - 4501e

Fourth Level

Room 4501



Photo # - 4501f

Fourth Level

Room 4501



Photo # - 4501g

Fourth Level

Room 4501



Photo # - 4501h

Fourth Level

Room 4501



Photo # - 4501j

Fourth Level

Room 4501



Photo # - 4501k

Fourth Level

Room 4501



Photo # - 4501L

Fourth Level

Room 4501



Photo # - 4501m

Fourth Level

Room 4501



Photo # - 4502

Fourth Level

Room 4502

ROOF LEVEL PHOTOS

ROOF PHOTOS- 4/24/2015



Photo 1: Elevator Penthouse –Along col line 4.3 between col lines J.5 and K – Looking East - Damaged exhaust vent and wall section at the elevator shaft



Photo 2: 1st Floor Roof –Between col lines D and E & 7 and 8 – Looking East - Collapsed portion of roof

APPENDIX C

STRUCTURAL FIELD OBSERVATIONS & PHOTOS

ELEVATION PHOTOS



Photo 1: South Elevation – Looking West-Northwest-West



Photo 2: West Elevation – Looking Northeast-East



Photo 3: North Elevation – Looking East



Photo 4: North Elevation Eastern End of Facility– Looking South



Photo 5: North Elevation – Looking South-Southwest



Photo 6: North Elevation – Looking Southwest-South



Photo 7: North Elevation – Looking South



Photo 8: North Elevation – Looking Southeast-South



Photo 9: North Elevation Western end of Facility - Looking South



Photo 10: South Elevation - Looking Northwest-West

ROOF PHOTOS



Photo 11: Elevator Penthouse –Along col line 4.3 between col lines J.5 and K – Looking East - Damaged exhaust vent and wall section at the elevator shaft



Photo 12: 1st Floor Roof –Between col lines D and E & 7 and 8 – Looking East - Collapsed portion of roof

4th LEVEL PHOTOS



Photo 13: 4th Floor – Room 4301 – Col line 6/E2 – Looking West - Vertical crack between the concrete column and CMU wall



Photo 14: 4th Floor – Room 204 –Along col Line 6.2 between G.5 & H.3 – Looking South – Horizontal crack @ top of CMU wall



Photo 15: 4th Floor – Room 204 – Along col Line 6.2 between H.6 & J.4-Looking South – Horizontal crack @ top of CMU wall

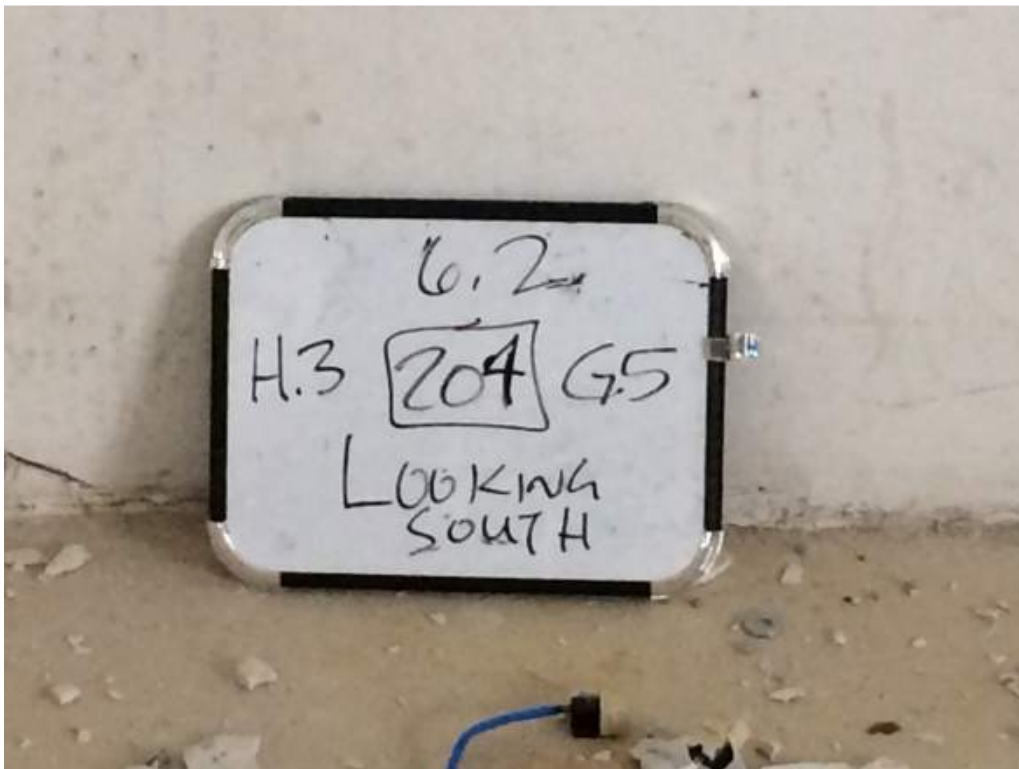


Photo 16: 4th Floor – Room 204 –Along col Line 6.2 between G.5 & H.3 – Looking South –Crack @ bottom of CMU wall

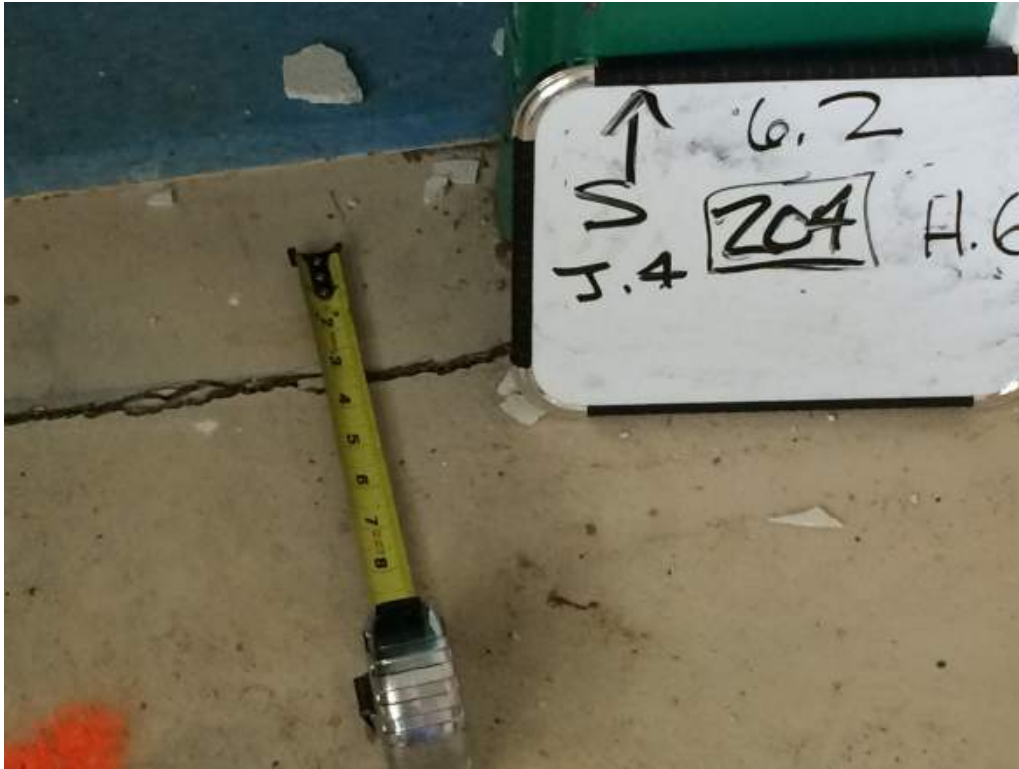


Photo 17: 4th Floor – Room 204 –Along col Line 6.2 between H.6 & J.4 –Crack in floor slab



Photo 18: 4th Floor – Room 204 –Along col Line J.4 Between 9 and 10 –Crack in floor slab



Photo 19: 4th Floor – Room 204 –Along col Line J.4 Between 8 and 9 –Looking East– Horizontal crack @ top of CMU wall



Photo 20: 4th Floor – Room 4201 – Along col line 4.5 between J.4 and K – Looking South – Demolished elevator CMU wall



Photo 21: 4th Floor – Room 4201 – Along col line 3 between K and L – Looking West – Vertical crack at CMU wall corner



Photo 22: 4th Floor- Room 4405 – Along col line J.4 and 4.5 – Looking East – Vertical crack between concrete column and CMU wall



Photo 23: 4th Floor- Room 4407-Along col line J.4 between 3.5 and 4 – Looking East – Map cracking in elevator CMU wall



Photo 24: 4th Floor – Room 4107 – Along col line 3.5 between J.4 and K – Looking North – Collapsed elevator CMU wall



Photo 25: 4TH Floor-Room 4412-Adjacent to col line 2 and behind col line K – Looking East – Vertical cracks in CMU wall



Photo 26: 4TH Floor-Room 4412-Adjacent to col line 2 and behind col line K – Looking East – Settlement of the concrete floor

3rd LEVEL PHOTOS



Photo 27: 3rd Floor- Room 3201 – Between col lines K and K.4 & 5 and 6- Crack in the floor slab



Photo 28: 3rd Floor – Room 3201 – Adjacent to J.5 and 4.5 – Looking West - Diagonal cracking in CMU walls



Photo 29: 3rd Floor – Room 3201-Col line 3.5 & K.4 – Looking West – Vertical crack between concrete column and CMU wall



Photo 30: 3rd Floor – Room 3201 – Along col line K.4 between 3 and 3.5 – Looking West – Vertical crack at CMU wall corner



Photo 31: 3rd Floor – Room 3205 – Along col line 3 and L – Looking East – Vertical crack between the concrete column to CMU wall



Photo 32: 3rd Floor – Room 3205 – Along col line 3 and K – Looking North – Stair step crack in CMU wall



Photo 33: 3rd Floor – Room 3201 – Adjacent to col lines N and 6 – Crack in the floor slab



Photo 34: 3rd Floor – Room 3201 – At col line N6 – Looking East – Vertical cracks between the concrete column and the CMU wall



Photo 35: 3rd Floor – Room 3201 – Along col line 3 between L and M – Looking South – Stair step crack in CMU wall



Photo 36: 3rd Floor – Room 3204 – Along col line 3 between L and M – Looking North – Stair step crack in tile in restroom walls



Photo 37: 3rd Floor – Room 3206 – Looking North – Missing section of exercise concrete floor



Photo 38: 3rd Floor – Room 3304 – Along col line 6.2 between col lines H.6 and J.4 – Looking South – Horizontal crack at top of CMU wall



Photo 39: 3rd Floor – Room 3304 – Along col line 6.2 between col lines H.6 and J.4 –Crack in floor slab



Photo 40: 3rd Floor – Room 3304 – Along col line J.4 between col lines 8 and 9 –Looking East – Horizontal crack between the concrete beam and CMU wall



Photo 41: 3rd Floor – Room 3301 – Between col lines G & H and 3 & 5 –Cracks in floor slab



Photo 42: 3rd Floor – Room 3301 – Along col line E between col lines 3 and 4 –Cracks in floor slab



Photo 43: 3rd Floor – Room 3301 – At col line 5E – Looking West – Crack between concrete column and CMU wall



Photo 44: 3rd Floor – Room 3301 – At col line 6E – Looking West – Crack between concrete column and CMU wall



Photo 45: 3rd Floor – Room 3405 – At col line J.4 and 4.5 – Looking East – Crack at CMU wall corner & between concrete col and CMU wall



Photo 46: 3rd Floor – Room 3407 – Adjacent to col line J.5 and 3.5 – Looking East – Map cracking in elevator CMU wall



Photo 47: 3rd Floor – Room 3412 – Col line 1.8 north of photo – Looking South – Missing portions of CMU wall with exposed reinforcement



Photo 48: 3rd Floor – Room 3412 – At col line K1.8 – Looking East – Missing portions of CMU wall with exposed reinforcement



Photo 49: 3rd Floor – Room 3412 – At col line K2 – Damaged bolt connecting beam to col



Photo 50: 3rd Floor – Room 3107 –Along col line 3.5 between col lines J.5 and K – Looking North -
Collapsed elevator CMU wall



Photo 51: 3rd Floor – Room 3107 –Along col line 3.5 between col lines J.5 and K – Looking West - Collapsed elevator CMU wall

2nd LEVEL PHOTOS



Photo 52: 2nd Floor – Room 2201-East Dormitory –Along col line 4 between column lines L and M – Looking North - Buckled, collapsed and sheared floor slab



Photo 53: 2nd Floor – Room 2201-East Dormitory –Along col line 4 between column lines L and M – Looking West - Buckled, collapsed and sheared floor slab



Photo 54: 2nd Floor – Room 2201-East Dormitory –Between column lines 4 and 5 & L and M - Looking West - Buckled, collapsed and sheared floor slab



Photo 55: 2nd Floor – Room 2201-East Dormitory –Between column lines 4 and 5 & L and M - Looking West - Buckled, collapsed and sheared floor slab



Photo 56: 2nd Floor – Room 2201-East Dormitory –Between column lines 5 and 6 & L and M - Looking West - Buckled, collapsed and sheared floor slab



Photo 57: 2nd Floor – Room 2201-East Dormitory –Between column lines 4 and 5 & L and M - Looking North - Buckled, collapsed and sheared floor slab



Photo 58: 2nd Floor – Room 2201-East Dormitory –Between column lines 4 and 5 & L and M - Looking North - Buckled, collapsed and sheared floor slab



Photo 59: 2nd Floor – Room 2201-East Dormitory –Along column line M between col lines 5 and 6 - Looking North - Buckled, collapsed and sheared floor slab



Photo 60: 2nd Floor – Room 2201-East Dormitory –At col line 6N - Looking East – Vertical cracks between concrete column and CMU walls



Photo 61: 2nd Floor – Room 2201-East Dormitory –At col line 2.8N - Looking South – Vertical cracks at corner of CMU walls



Photo 62: 2nd Floor – Room 2201-East Dormitory –Adjacent to col lines 2.8 & M6 - Looking West – Stair step/vertical cracks in CMU walls



Photo 63: 2nd Floor – Room 2201 – East Dormitory – Along col line 3 between M.6 and M-Looking South -Stair step crack in CMU walls



Photo 64: 2nd Floor – Room 2201 – East Dormitory – At column line 3.5&K- Looking West-Vertical cracks between a concrete column and CMU wall



Photo 65: 2nd Floor – Room 2201 – East Dormitory – At column line 4.5&K.4-Looking West-Vertical cracks between a concrete column and CMU wall



Photo 66: 2nd Floor – Room 2201 – East Dormitory – Between col lines L and M & 4 and 5-Looking West - Cracks in floor slab



Photo 67: 2nd Floor – Room 2204 – Along col line 2 between col lines L and M -looking South –Vertical crack in CMU wall

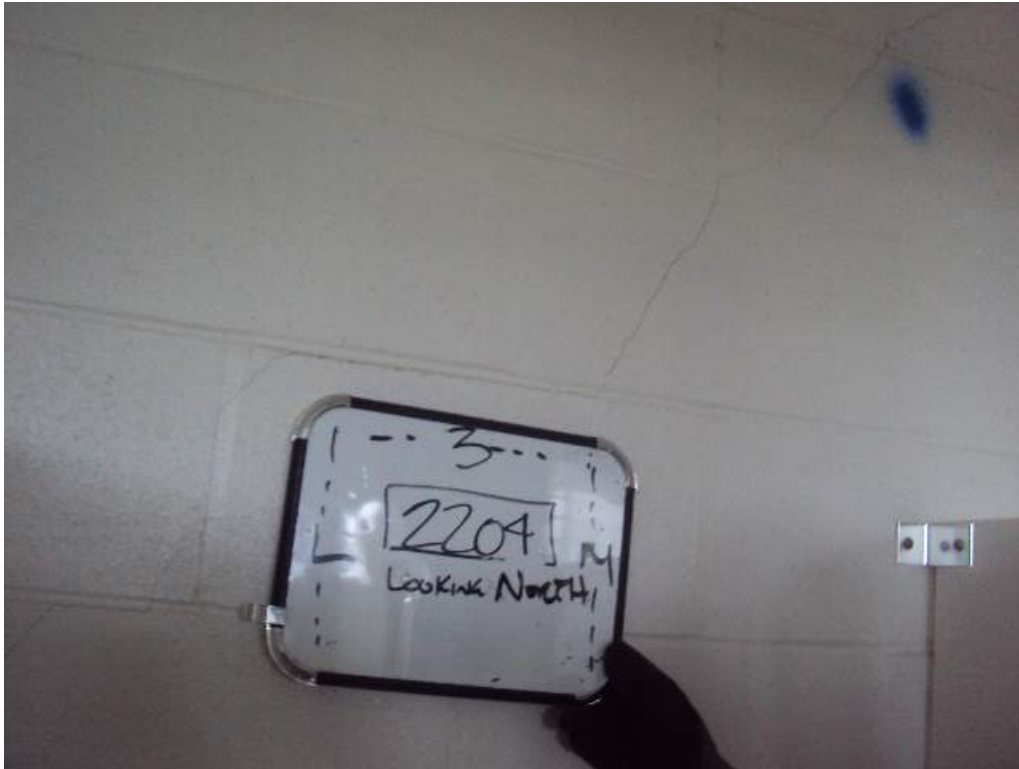


Photo 68: 2nd Floor – Room 2204 – Along col line 3 between col lines L and M-Looking North –Stair step crack in CMU wall



Photo 69: 2nd Floor – Room 2204 – Along col line 3 between col lines L and M-Looking North –Stair step crack in CMU wall



Photo 70: 2nd Floor – Room 2204 – At col line 3K-Looking North –Vertical crack between concrete col and CMU wall



Photo 71: 2nd Floor – Room 2301 – At col line 3E-Looking South –Vertical crack between concrete col and CMU wall



Photo 72: 2nd Floor – Room 2301 – At col line 5E-Looking West –Vertical crack between concrete col and CMU wall



Photo 73: 2nd Floor – Room 2301 – At col line 6H-Looking East –Stair step cracks in CMU wall



Photo 74: 2nd Floor – Room 2301 – At col line 4H-Looking East –Vertical crack between conc col and CMU wall and CMU wall displacement



Photo 75: 2nd Floor – Room 2301 – At col line 4H-Looking East –Horizontal cracks in conc col



Photo 76: 2nd Floor – Room 2301 – Between col lines 4 and 5 & G and H-Looking North –Crack in the floor slab



Photo 77: 2nd Floor – Room 2301 – At col line F6-Looking North –Crack in the floor slab



Photo 78: 2nd Floor – Room 2201 North Dormitory – At col line 6.5 & G.5 – Looking South –Vertical crack at the CMU wall intersection



Photo 79: 2nd Floor – Room 2201 North Dormitory – Along col line J.4 between col lines 8 and 9 – Looking East –Horizontal crack @ top of wall between the concrete beam and CMU wall



Photo 80: 2nd Floor – Room 2201 North Dormitory – Along col line 6.2 between col lines J.4 and H.6 – Looking South –Horizontal crack @ top of CMU wall



Photo 81: 2nd Floor – Room 2201 North Dormitory – Along col line 6.2 between col lines G.5 and H.3 – Looking South –Crack in the floor slab



Photo 82: 2nd Floor – Room 2201 North Dormitory – Along col line H.3 between col lines 8 and 9 – Looking North –Crack in the floor slab



Photo 83: 2nd Floor – Room 2201 North Dormitory – Along col line 9 between col lines H.6 and J.4 – Looking West –Buckled, Cracked and Shear floor slabs



Photo 84: 2nd Floor – Room 2201 North Dormitory – At col line 9 and J4 – Looking East – Buckled, Cracked and Shear floor slabs

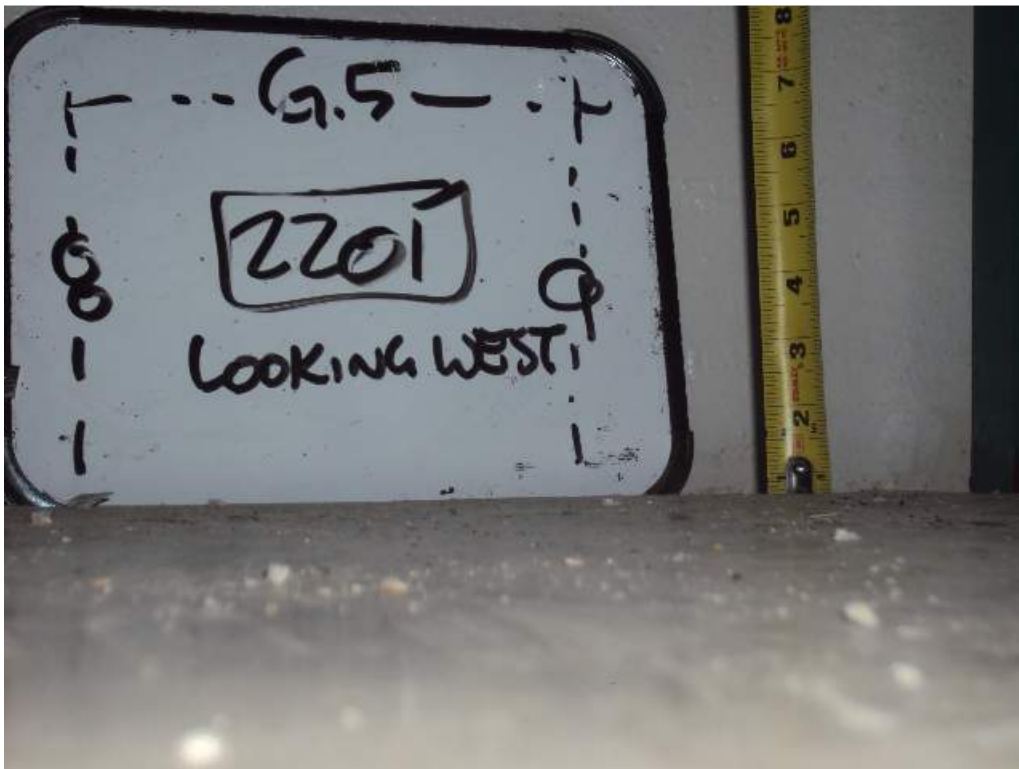


Photo 85: 2nd Floor – Room 2201 North Dormitory – Along col line G.5 between col lines 8 and 9 – Looking East – Buckled, Cracked and Shear floor slabs



Photo 86: 2nd Floor – Room 2401– Along col line J.5 between col lines 5 and 6.2 – Looking East –Stair step/vertical crack in CMU wall



Photo 87: 2nd Floor – Room 2401– At col lines J.5 and 5 – Looking South –Vertical crack between conc col and CMU wall

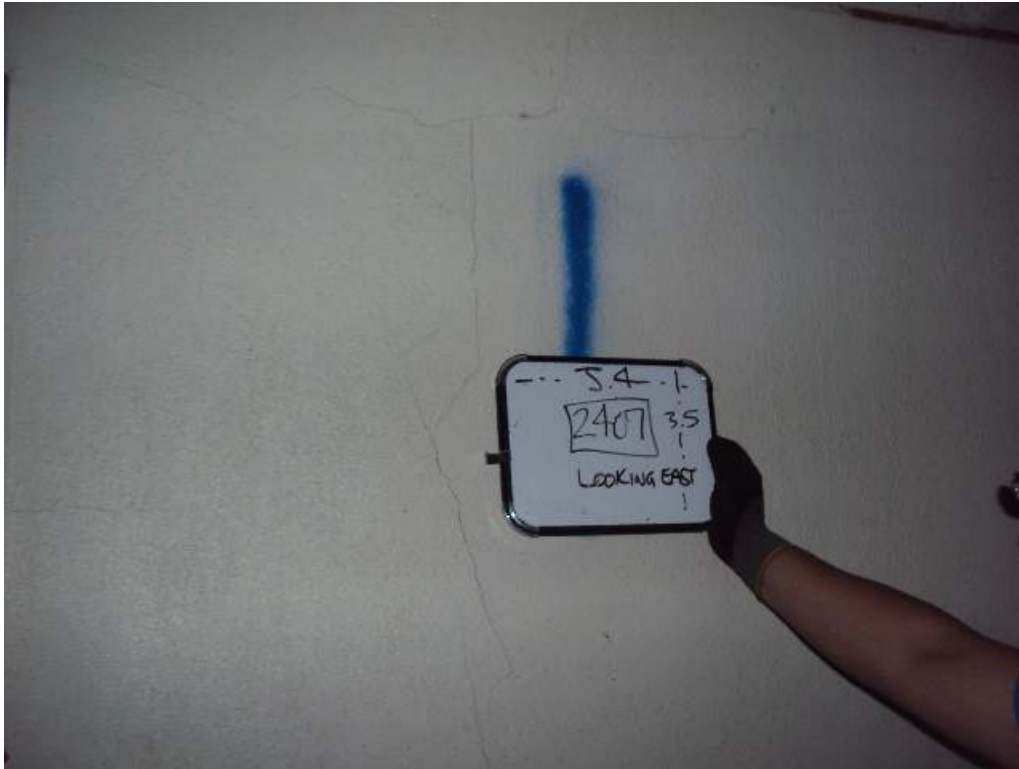


Photo 88: 2nd Floor – Room 2407– At col lines J.4 and 3.5 – Looking East –Map cracking in the elevator CMU wall



Photo 89: 2nd Floor – Room 2107– Adjacent to col line 3.7 between col lines J.5 and K – Looking North – Collapsed elevator CMU wall



Photo 90: 2nd Floor – Room 2412– Adjacent to col line 2K – Looking East –Vertical crack at CMU wall intersection



Photo 91: 2nd Floor – Room 2412– Adjacent to col line 2K – Looking East –Collapsed portion of CMU wall below 3rd floor slab

1st LEVEL PHOTOS

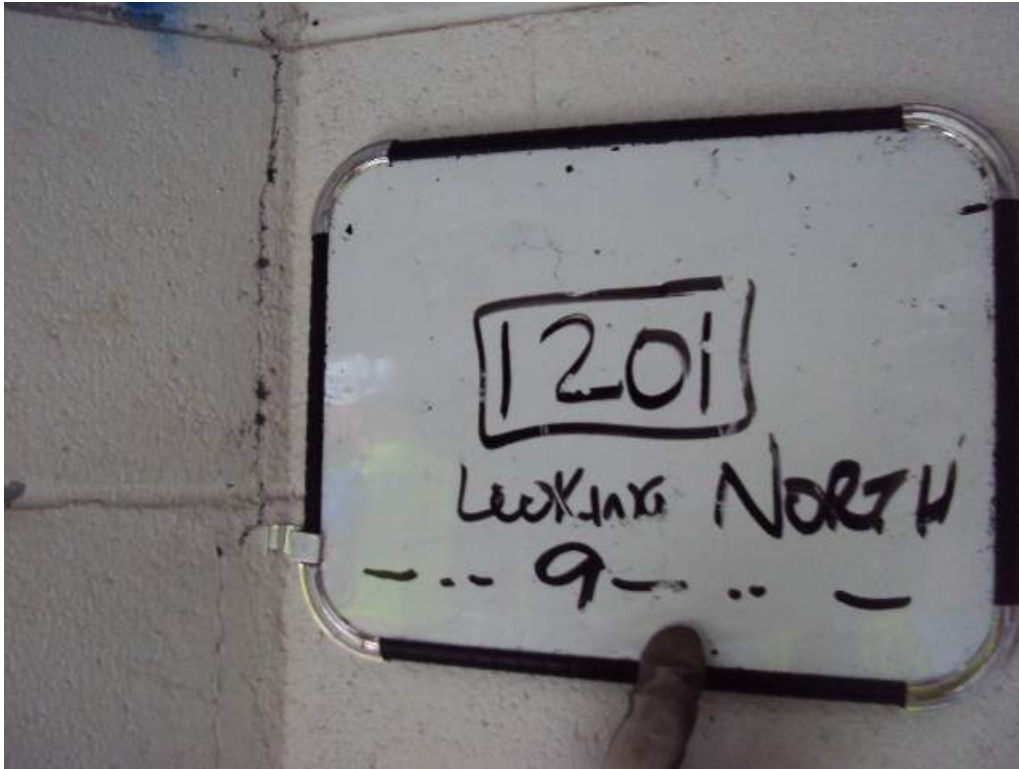


Photo 92: 1st Floor – Room 1201– Adjacent to col line 9S– Looking North –Vertical cracks at CMU wall corner



Photo 93: 1st Floor – Room 1227– Adjacent to col line 7Q– Looking North–Vertical cracks at CMU wall corner

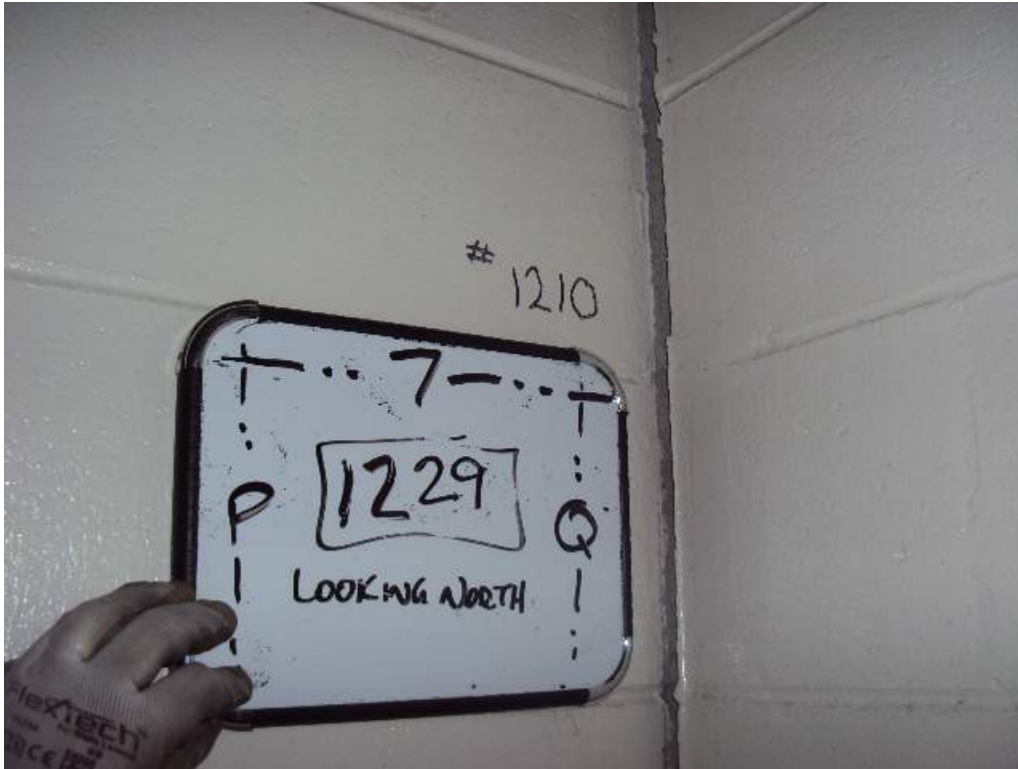


Photo 94: 1st Floor – Room 1229– Along col line 7 between col lines P and Q– Looking North–Vertical cracks at CMU wall corner with CMU wall displacement



Photo 95: 1st Floor – Room 1229– Along col line 7 between col lines P and Q– Looking North–Displaced CMU wall between col lines P and Q



Photo 96: 1st Floor – Room 1219– Along col line 3.4 between col lines M.6 and N– Looking South– Partially collapsed CMU wall



Photo 97: 1st Floor – Room 1219– Along col line 3.4 between col lines M.6 and N– Looking South– Partially collapsed CMU wall



Photo 98: 1st Floor – Room 1219– Along col line 5.5 adjacent to M6– Looking North-Partially collapsed CMU wall



Photo 99: 1st Floor – Room 1301– Along col line S between col lines 1.8 and 2– Looking West-Stair step crack in CMU wall



Photo 100: 1st Floor – Room 1309– Between col lines 2 and 2.8 & P and Q – Looking North – Stair step crack and vertical crack in CMU wall

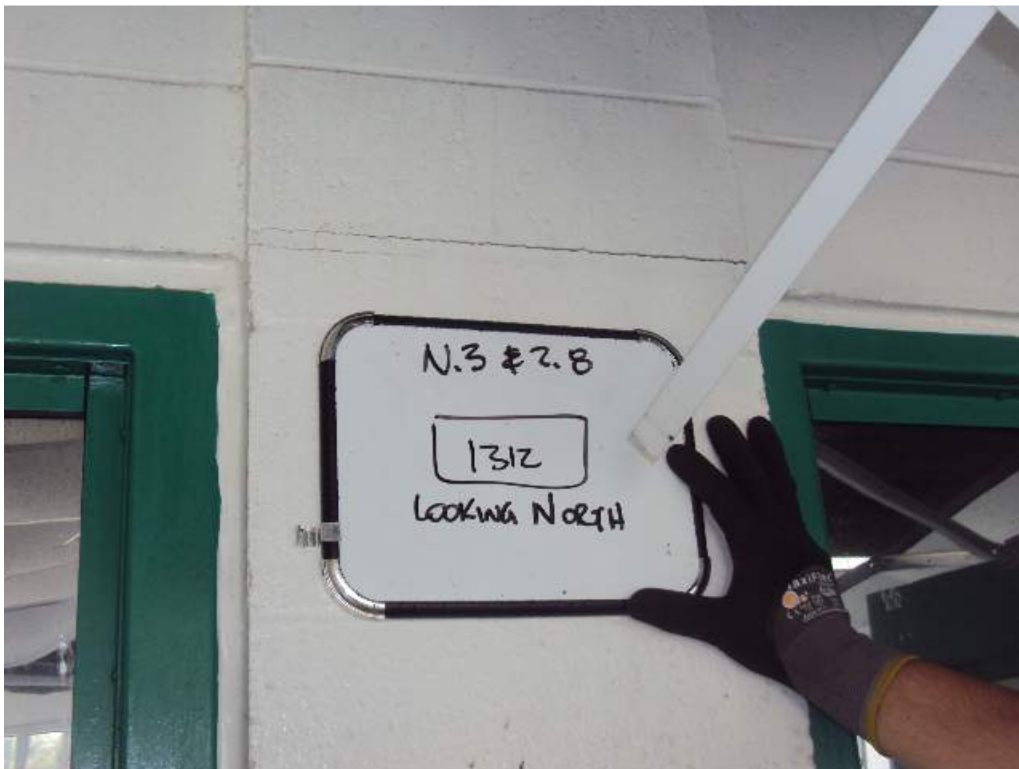


Photo 101: 1st Floor – Room 1312– Col lines N.3 and 2.8 – Looking North – Horizontal crack in CMU column and wall



Photo 102: 1st Floor – Room 1311– Between col lines N.3 and P & 2 and 2.8 – Looking West – Vertical crack in CMU column and wall



Photo 103: 1st Floor – Room 1313– Adjacent to col lines N and 2.9 and 3.4 – Looking West – Map cracking in wall



Photo 104: 1st Floor – Room 1313– At col line 2.8 and N.3 – Looking South – Vertical crack in CMU wall



Photo 105: 1st Floor – Room 1245– Along col line 3 between M.6 and N – Looking South – Collapsed CMU wall



Photo 106: 1st Floor – Room 1232– Along col line 7 adjacent to P – Looking North – Vertical crack at corner of CMU wall



Photo 107: 1st Floor – Room 1232– Along col line 7 adjacent to N3 – Looking North – Displaced CMU wall



Photo 108: 1st Floor – Room 1232– Along col line 7 between col lines M.6 and N – Looking North – Vertical and horizontal cracks in CMU walls with CMU wall displacement



Photo 109: 1st Floor – Room 1242– Along col line 7 and M – Looking North – Sheared, displaced and partially collapsed CMU wall



Photo 110: 1st Floor – Room 1601– Along col line 5.5 and A – Looking West – Sheared, displaced and partially collapsed CMU wall



Photo 111: 1st Floor – Room 1601– Along col line 5.5 and between A and B – Looking North – Sheared, displaced and partially collapsed CMU wall



Photo 112: 1st Floor – Room 1425– Adjacent to col line 3/E.4 – Looking North – Stair step crack in CMU wall



Photo 113: 1st Floor – Room 1425– At col line 3-F – Looking North – Vertical crack between concrete col and CMU wall along with CMU displacement



Photo 114: 1st Floor – Room 1429– At col line J and 4.3 – Looking North – Vertical crack at corner of CMU wall

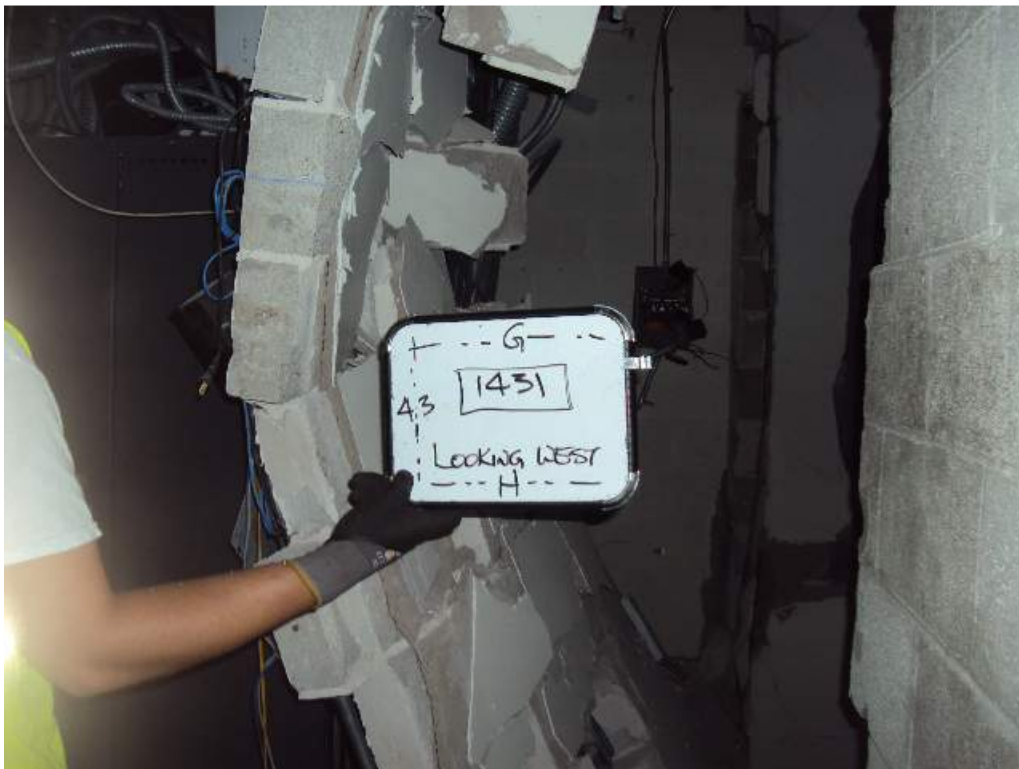


Photo 115: 1st Floor – Room 1431– Along col line 4.3 between col lines G and H – Looking West – Collapsed CMU wall



Photo 116: 1st Floor – Room 1401– Along col line K4 between col lines 2 and 3 – Looking East– Stair step crack in CMU wall



Photo 117: 1st Floor – Room 1403– Along col line K4 adjacent to col line 3 – Looking North– Vertical crack at CMU wall corner along with wall displacement



Photo 118: 1st Floor – Room 1434– Adjacent to col line K4 and 4.7 – Looking East– Vertical crack at CMU wall corner



Photo 119: 1st Floor – Room 1434– Adjacent to col line K4 and 4.7 – Looking East– Vertical crack in CMU wall

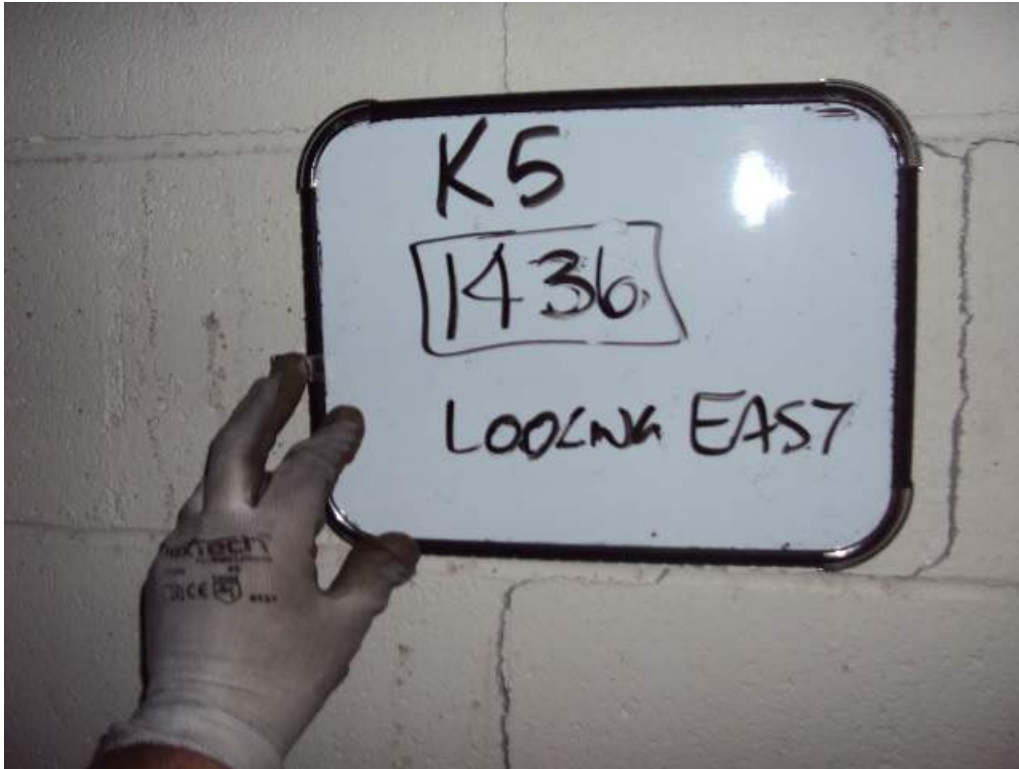


Photo 120: 1st Floor – Room 1436– At col line K5 – Looking East– Stair step crack in CMU wall



Photo 121: 1st Floor – Room 1701– Along col line 6 adjacent to A – Looking West– Displaced CMU wall

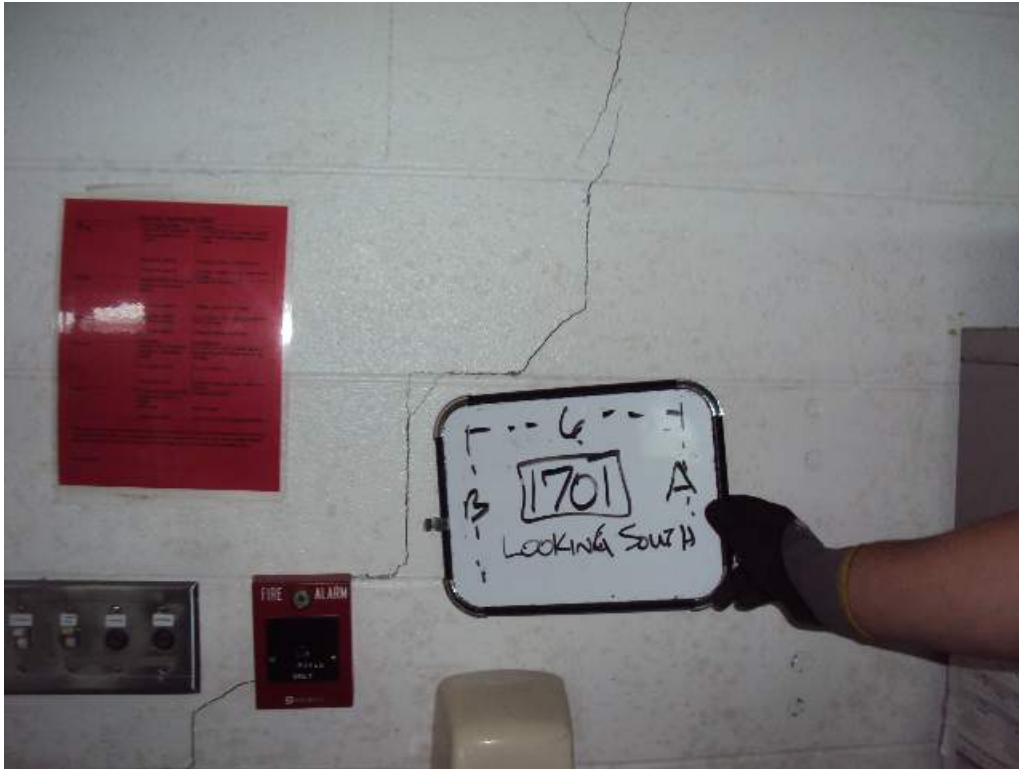


Photo 122: 1st Floor – Room 1701– Along col line 6 between A and B– Looking South– Stair step crack in CMU wall

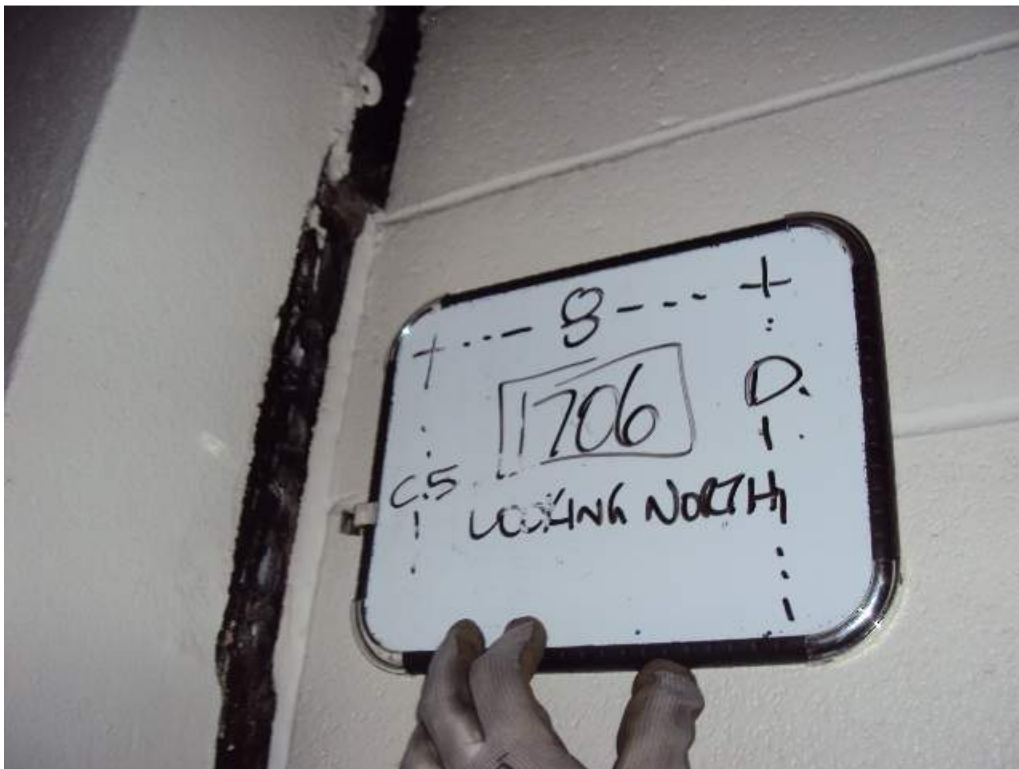


Photo 123: 1st Floor – Room 1706– Along col line 8 between C and D– Looking North– Displaced CMU wall



Photo 124: 1st Floor – Room 1801– Along col line E between 6 and 7– Looking North– Cracked, sheared and partially collapsed CMU wall



Photo 125: 1st Floor –Room 1801 – At col line 7E – Looking West – Cracked columns



Photo 126: 1st Floor –Room 1801 – Between col lines D and E & 7 and 8 – Looking West – Collapsed roof



Photo 127: 1st Floor –Room 1801 – Along col line E between 7 and 8 – Looking West – Collapsed roof



Photo 128: 1st Floor –Room 1801 – Along col line 7 between F and G – Looking South – Sheared concrete slab



Photo 129: 1st Floor –Room 1801 – At col line F.8 & 8 – Looking North – Vertical crack between concrete col and CMU wall



Photo 130: 1st Floor –Room 1801 – At col line F7 – Looking North – Cracked columns



Photo 131: 1st Floor –Room 1801 – Between column lines 6.6 and 7 & F and G – Looking North – Sheared concrete slab



Photo 132: 1st Floor –Room 1801 – Between column lines 6.6 and 7 & G.5 and H.3 – Looking North – Buckled, sheared and collapsed concrete slab



Photo 133: 1st Floor –Room 1520 – Along col line C.5 between col lines 4 and 5.5 – Looking East – Partially collapsed exterior light gage stud wall



Photo 134: 1st Floor –Room 1520 – Along col line 5.5 between col lines C and C.5 – Looking North – Stair step crack in CMU wall



Photo 135: 1st Floor –Room 1501– Between col lines F and G & 4.3 and 5.5 – Looking South – Collapsed CMU walls



Photo 136: 1st Floor –Room 1106 – Along col line G between col lines 4.7 and 5.5 – Looking South – Collapsed CMU walls



Photo 137: 1st Floor –Room 1443 – At column line 5J – Looking East – Vertical crack between concrete column and CMU wall

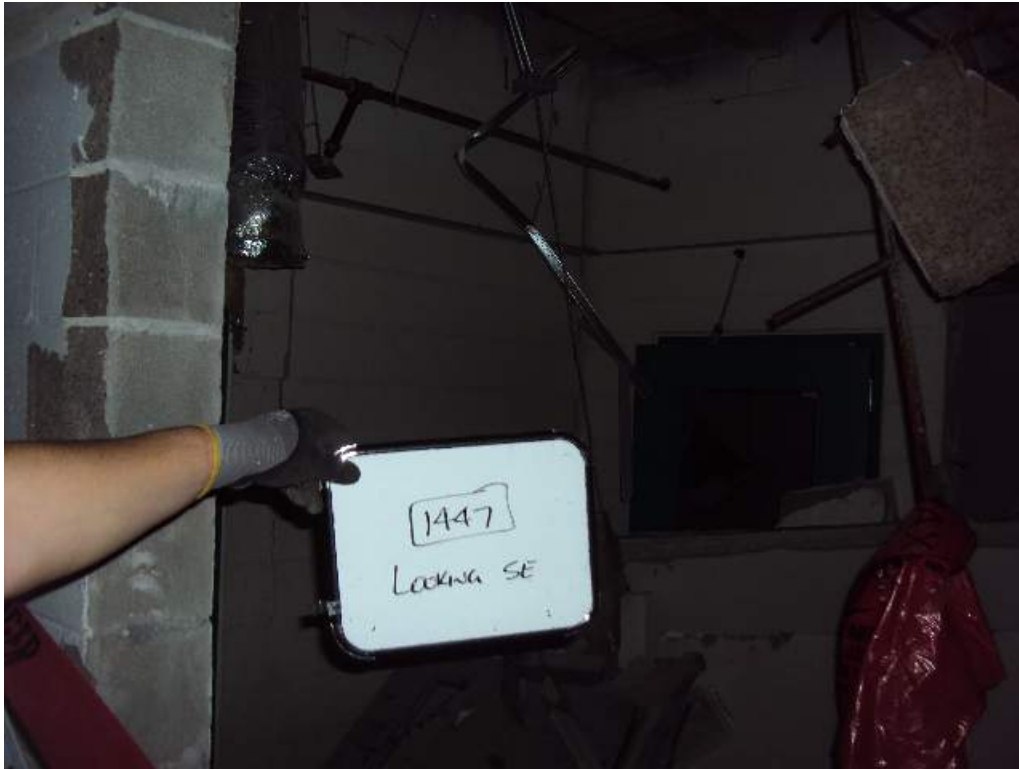


Photo 138: 1st Floor –Room 1447 – Between column lines G and H & 4.3 and 5.5 – Looking Southeast – Collapsed CMU wall



Photo 139: 1st Floor –Room 1446 – Between column lines G and H & 5 and 5.5 – Looking West– Severe map cracking in CMU wall



Photo 140: 1st Floor –Room 1446 – Between column lines G and H & 5 and 5.5 – Looking South– CMU wall with horizontal translation



Photo 141: 1st Floor –Room 1441 – At column lines K.4 and 6.6 – Looking West– Vertical crack between concrete column and CMU wall



Photo 142: 1st Floor –Room 1902 – Between column lines J.5 and L & 6.6 and 8 – Looking East– Collapsed concrete floor



Photo 143: 1st Floor –Room 1902 – Between column lines J.5 and L & 6.6 and 8 – Looking Southeast– Collapsed concrete floor



Photo 144: 1st Floor –Room 1902 – Between column lines J.5 and L & 6.6 and 8 – Looking North– Collapsed concrete floor



Photo 145: 1st Floor –Room 1902 – Along col line 6.6 between col lines J.5 and L – Looking South– Collapsed CMU wall



Photo 146: 1st Floor –Room 1907 – Along col line 8 between col lines H.5 and J.5 – Looking North– Stair step crack in CMU wall

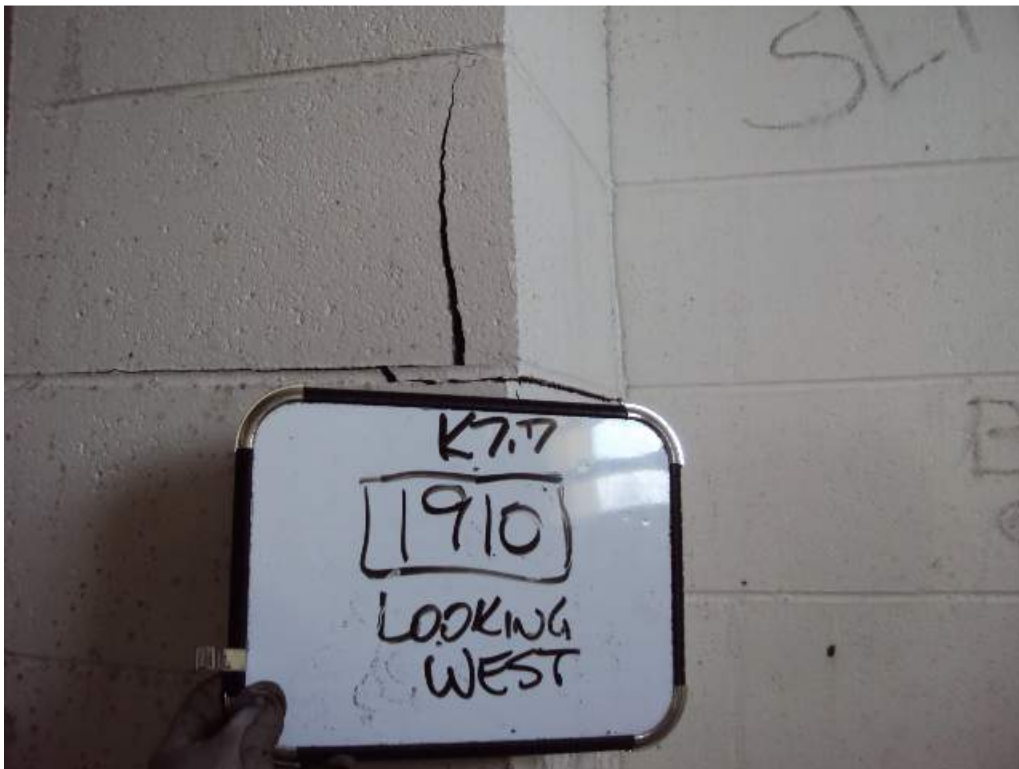


Photo 147: 1st Floor –Room 1910 – At col line K.7 and 7 – Looking West– Vertical and horizontal cracks CMU wall



Photo 148: 1st Floor –Room 1906 – Between col lines H.5 and J.5 & 7 and 7.3 – Looking West– Partially collapsed CMU walls



Photo 149: 1st Floor –Room 1904 and 1905 – Between col lines H.5 and J.5 & 6 and 7 – Looking West– Partially collapsed CMU walls



Photo 150: 1st Floor –Room 1226 – Between col lines L and M & 5.5 and 6 – Looking West– Collapsed floor slabs



Photo 151: 1st Floor –Room 1250 to 1252– Between col lines K.4 and M & 3 and 5.5 – Looking South– Collapsed CMU walls and floor slabs

BASEMENT LEVEL PHOTOS



Photo 152: Basement –Room 134B– Between col lines K.2 and L & 7 and 8 – Looking East– Collapsed CMU walls



Photo 153: Basement –Room 132– Between col lines K.2 and M & 3 and 6 – Looking South– Collapsed CMU walls and floor slabs



Photo 154: Basement –Room 132– Between col lines K.2 and M & 3 and 6 – Looking South– Collapsed CMU walls and floor slabs



Photo 155: Basement –Room 128, 129 & 132– Between col lines J.5 and K.8 & 3 and 5 – Looking South– Collapsed CMU walls and floor slabs



Photo 156: Basement –Room 102, 103, 104 & 127– Between col lines H.3 and K.2 & 3 and 4 – Looking South– Collapsed ceiling structure



Photo 157: Basement –Room 140, 141 and 143– Between col lines G.5 and H.3 & 8 and 10 – Looking Southeast– Collapsed CMU walls and walkway roofs

APPENDIX D

MECHANICAL FIELD OBSERVATIONS & PHOTOS



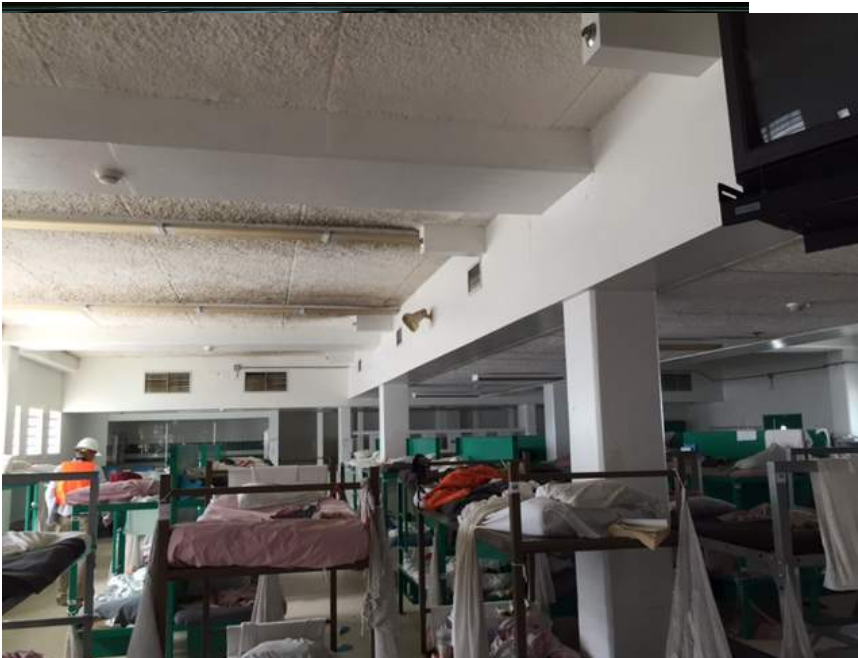
First floor- Exposed duct work to be reinsulated.



Duct work with internal insulation to be replaced- Typical for east and west wing detention areas.



Existing fire sprinkler system to be repaired- Typical for east and west wing cell blocks.



Duct work with external insulation to be repaired- north wing detention area.



Dormant cooling towers.



HVAC equipment to be replaced on basement first floor level.



Basement level- Main boiler and pump room to be replaced.



Ductwork on north side of building exposed to weather to be replaced.

APPENDIX E

ELECTRICAL FIELD OBSERVATIONS & PHOTOS



500KW Emergency Generator.



Transportation gally port lighting fixture damage.



Vehicle gally port lighting fixture damage.



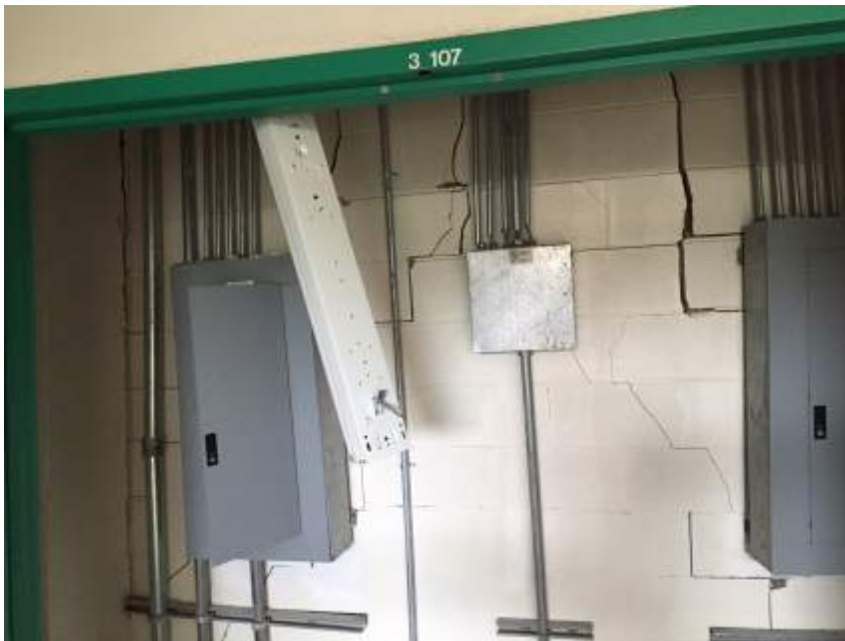
First floor control area lighting fixture damage.



First floor corridor indicating branch circuit damage.



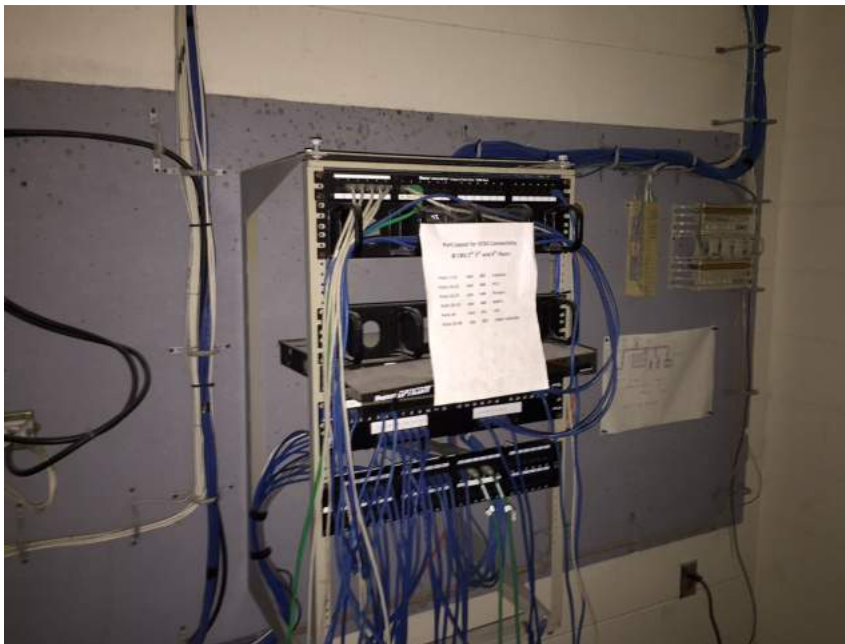
Typical housing unit lighting fixture.



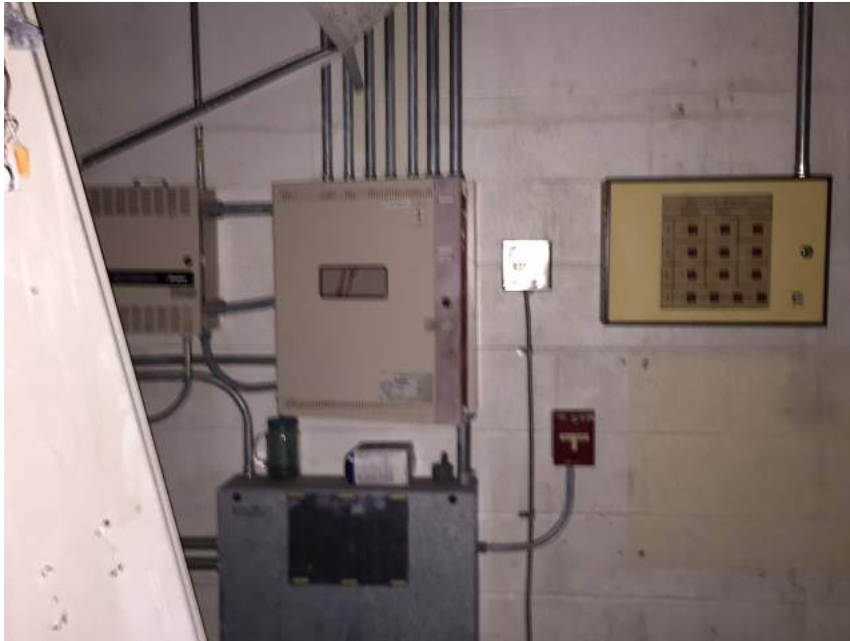
3rd floor electrical panels on elevator shaft walls.



1st floor electrical panel on elevator shaft wall.



Typical telecommunications rack.



Fire alarm equipment.



Main distribution switchboard.



Basement/1st floor view looking north. Electric boiler feeder and main distribution switchboard.



View looking north in laundry room. Laundry power panel buried in the debris to the west.



Base view looking north into boiler room.



Basement view looking north. Electric Boiler feeders with main distribution switchboard in background.