

ADVERTISEMENT FOR BIDS

Madison Creek Bank Stabilization

City of Goodlettsville
(Owner)

Separate sealed Bids for furnishing of all materials, labor, tools, equipment, appliances and cleanup necessary for the construction of Bank Stabilization of Madison Creek as follows:

Bids will be received by Charlie Ballard, 105 South Main Street, Goodlettsville, TN 37072 until **2:00 PM, local time, March 7th, 2019**, and then at said office publicly opened and read aloud.

The projects consist of the installation of approximately 520 linear feet of hard armoring bank stabilization with the necessary excavation, backfill, erosion control and traffic control to prevent further erosion along Willis Branch Drive.

Prospective Bidders may examine the Bidding Documents at the Issuing Office on Mondays through Fridays between the hours of 8 a.m. and 4 p.m. and may obtain copies of the Bidding Documents from the Issuing Office as described below:

- OHM Advisors, 209 10th Avenue South, Suite 116, Nashville, TN 37203

Copies of the Contract Documents and Specifications, including bidding documents and Contract Drawings may be obtained from OHM Advisors, upon payment of \$75 for each complete set of documents. This payment is not refundable.

Bidders must be listed on owner's list of plan holders who have purchased the Contract Documents, Specifications, and Drawings.

No bid may be withdrawn within 60 days after the scheduled time for receipt of bids. The City reserves the right to reject any or all bids, to waive informalities and to accept the bid or bids judged to be in the best interest of the City.

A "Bid Bond" or other bond security in the amount of 5 percent of the bid amount must accompany the submitted bid. The successful Bidder will be required to furnish a "Performance Bond" and a "Payment Bond", each for 100 percent of the contract amount, as security for the faithful performance of the work and the payment of all bills and obligations arising from the performance of the work.

All bidders must be licensed contractors as required by the Contractors Licensing Act of 1976 (TCA Title 62, Chapter 6). No bid will be opened unless the sealed envelope containing the bid provides the following information: the name, license number, expiration date thereof, and license classification of the contractors applying to bid for the prime contract

The City of Goodlettsville does not discriminate on the basis of age, race, sex, color, national origin, religion or disability in admission to, access to, or operation of its programs, services or activities, nor does it discriminate in its hiring, employment or purchasing practices. Contact the City Manager at (615) 851-2200 with questions, concerns, complaints and with requests for ADA accommodations.

No faxed bids will be accepted. All bids must remain bound in original binding in a sealed envelope marked "Madison Creek Bank Stabilization."

City of Goodlettsville

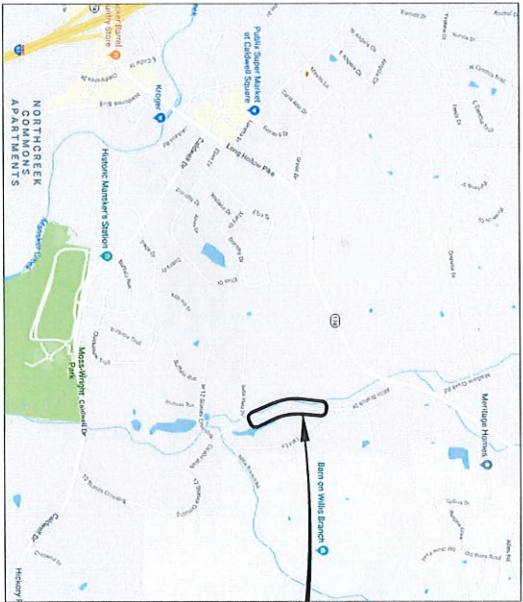
Tim Ellis, City Manager

MADISON CREEK BANK STABILIZATION

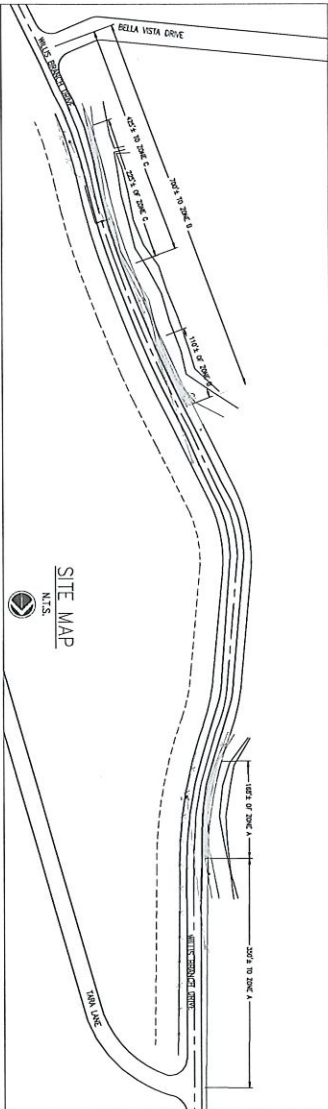
CITY OF GOODLETTSVILLE

SUMNER COUNTY, TENNESSEE

UTILITY PROVIDERS	
SANITARY SEWER METRO WATER SERVICES 800 2ND AVENUE SOUTH NASHVILLE, TENNESSEE 37210 615.262.4500 (OFFICE)	ELECTRICITY NASHVILLE ELECTRIC SERVICE 1214 CHURCH STREET NASHVILLE, TENNESSEE 37248 615.259.5500 (OFFICE)
NATURAL GAS PENNONT NATURAL GAS 5111 9TH STREET NASHVILLE, TENNESSEE 37208 615.272.8000	TELEPHONE AT&T 333 COMMERCE STREET NASHVILLE, TENNESSEE 37201 615.214.6529 (OFFICE)
WATER SUMNER COUNTY UTILITY DISTRICT 100 WEST WEBSTER MADISON, TENNESSEE 37115 615.860.2001 CONTACT: MENNETH TURNER	CABLE COMCAST CABLE COMMUNICATIONS 800.258.2278 (OFFICE)
STORMWATER/MS4 CITY OF GOODLETTSVILLE 100 WEST WEBSTER MADISON, TENNESSEE 37115 615.860.2740 CONTACT: WARREN GARRETT	



VICINITY MAP
NOT TO SCALE



SITE MAP
N.T.S.

CITY OF
GOODLETTSVILLE

JEFF DUNCAN
MAYOR

HARRY BELL
JEFF CORDELL
ZACH YOUNG
RUSTY TINNIN
COMMISSIONERS

TIM ELLIS
CITY MANAGER

PROJECT LOCATION

- SHEET INDEX**
- C-100 - COVER SHEET
 - C-110 - EXISTING CONDITIONS
 - C-120 - INITIAL EPSC AND TEMPORARY STREAM DIVERSION PLAN - ZONE A
 - C-121 - INITIAL EPSC AND TEMPORARY STREAM DIVERSION PLAN - ZONE B & C
 - C-130 - STABILIZATION PLAN - ZONE A
 - C-131 - STABILIZATION PLAN - ZONE B & C
 - C-140 - FINAL EPSC PLAN - ZONE A, B, AND C



SHEET C-100	MADISON CREEK BANK STABILIZATION GOODLETTSVILLE, TENNESSEE
	COVER SHEET

DATES AND REVISIONS	
01/20/2019	REVIEW WITH CITY
02/26/2019	ADDP PERMIT APPLICATION

Matthew S. Bost, PE Professional Engineer License #11881 Checked By: MSB Drawn By: MSB Project #: 107-180030	2/6/2019
--	----------



OHM
Advancing Communities[®]

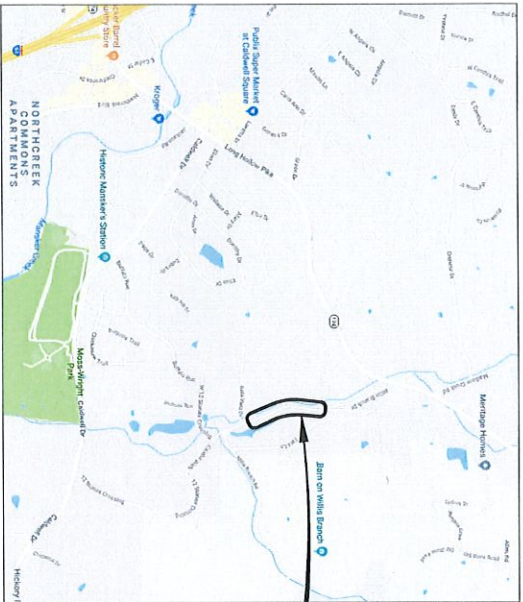
ARCHITECTS ENGINEERS PLANNERS

108 10th Avenue South
Nashville, Tennessee 37203
615.259.5500
www.ohm-engineers.com

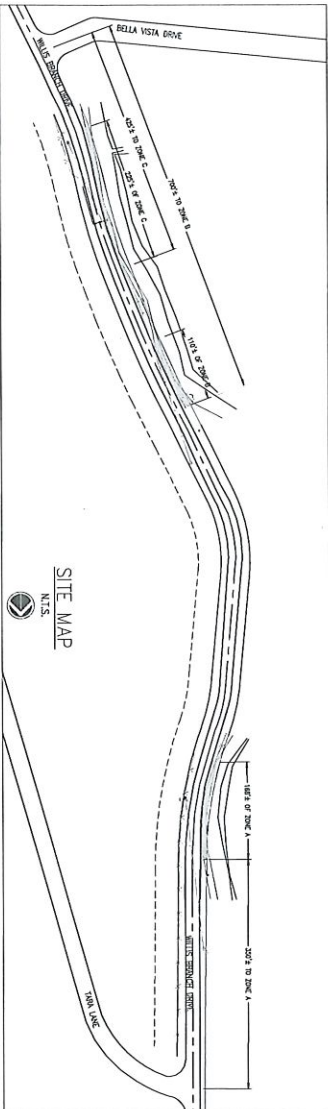
MADISON CREEK BANK STABILIZATION

CITY OF GOODLETTSVILLE
SUMNER COUNTY, TENNESSEE

UTILITY PROVIDERS	
SANITARY SEWER METRO WATER SERVICES 800 2ND AVENUE SOUTH NASHVILLE, TENNESSEE 37218 615.882.4892 (OFFICE)	ELECTRICITY NASHVILLE ELECTRIC SERVICE 1214 CHURCH STREET NASHVILLE, TENNESSEE 37208 615.863.8991 (OFFICE)
NATURAL GAS PEDEMONT NATURAL GAS 511 9TH STREET NASHVILLE, TENNESSEE 37208 615.257.2954	TELEPHONE AT&T 333 COMMERCE STREET NASHVILLE, TENNESSEE 37201 615.217.4525 (OFFICE)
WATER SUMNER COUNTY UTILITY DISTRICT 140 WEST WEBSTER MADISON, TENNESSEE 37115 615.868.2031 CONTACT: KENNETH TURNER	CABLE COMCAST CABLE COMMUNICATIONS 800.286.2278 (OFFICE)
STORMWATER/MS4 CITY OF GOODLETTSVILLE 215 CANTONMENT STREET GOODLETTSVILLE, TENNESSEE 37072 615.868.2740 CONTACT: WARREN GARRETT	



VICINITY MAP
NOT TO SCALE



SITE MAP
N.T.S.

- SHEET INDEX**
- C-100 - COVER SHEET
 - C-110 - EXISTING CONDITIONS
 - C-120 - INITIAL EPSC AND TEMPORARY STREAM DIVERSION PLAN - ZONE A
 - C-121 - INITIAL EPSC AND TEMPORARY STREAM DIVERSION PLAN - ZONE B & C
 - C-130 - STABILIZATION PLAN - ZONE A
 - C-131 - STABILIZATION PLAN - ZONE B & C
 - C-140 - FINAL EPSC PLAN - ZONE A, B, AND C

CITY OF
GOODLETTSVILLE

JEFF DUNCAN
MAYOR

HARRY BELL
JEFF CORDELL
ZACH YOUNG
RUSTY TINNIN
COMMISSIONERS

TIM ELLIS
CITY MANAGER



MADISON CREEK BANK STABILIZATION
GOODLETTSVILLE, TENNESSEE

COVER SHEET

SHEET: C-100

DATES AND REVISIONS	
02/04/2019	REVIEW WITH CITY
02/04/2019	FINAL PROJECT APPLICATION

2/04/2019

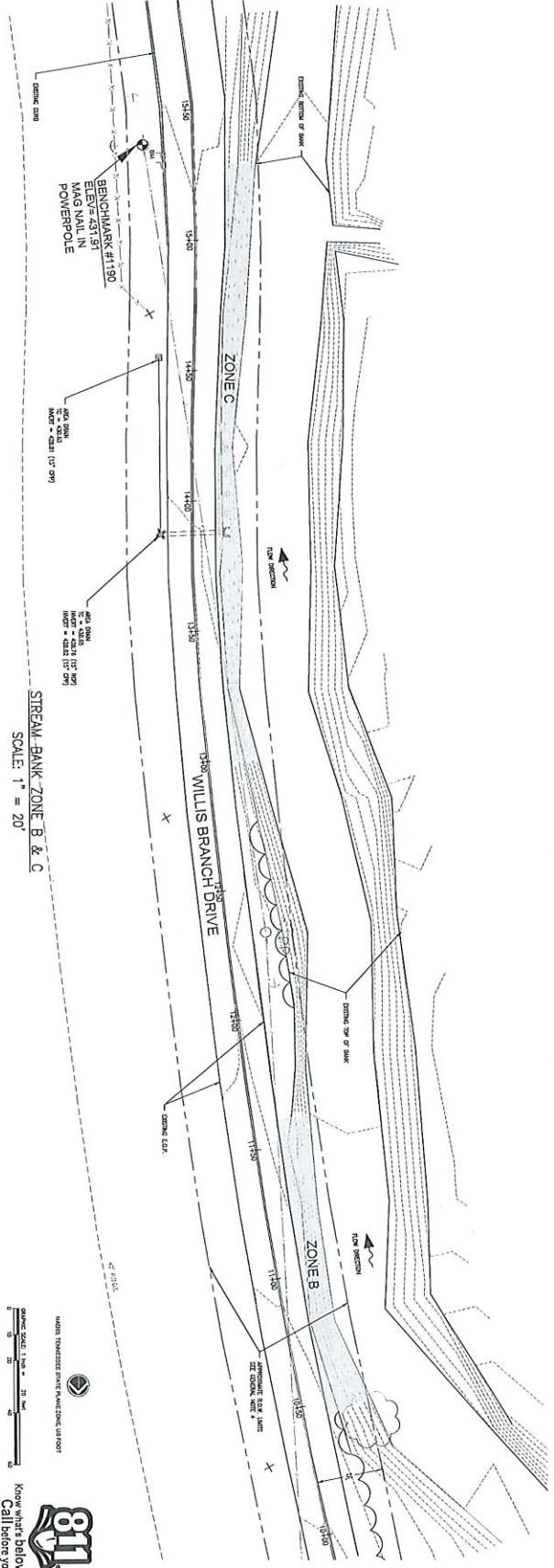
Madison Creek Bank Stg. Plan
Tennessee State #11881

Checked By: MJS
Drawn By: MJS
Project #: 107-140020

OHM
Advancing Communities

ARCHITECTS ENGINEERS PLANNERS

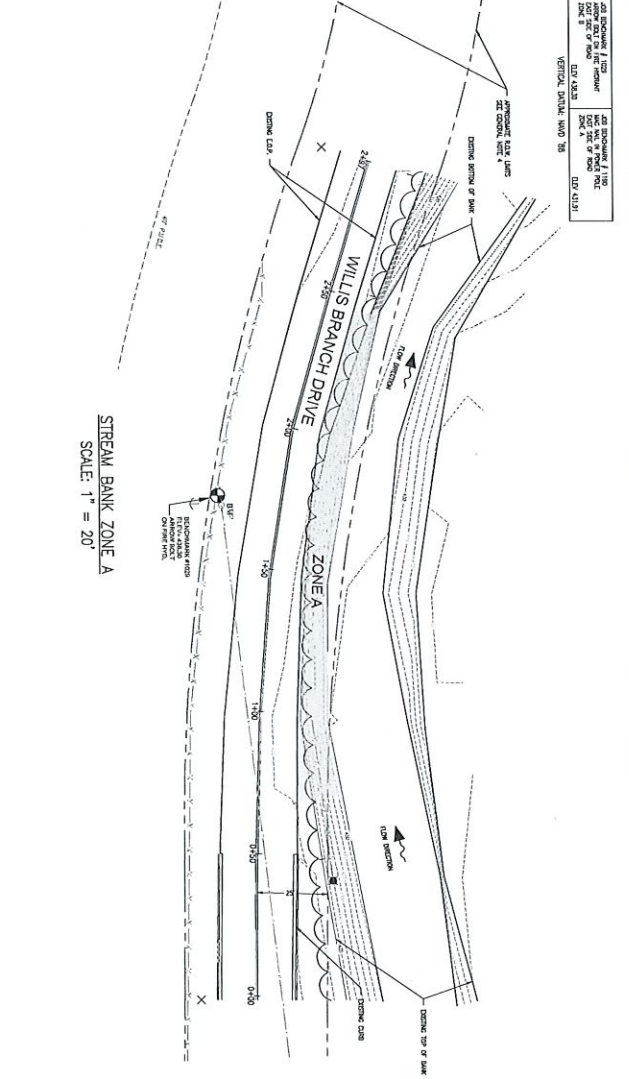
1009 10TH AVENUE SOUTH
SUITE 100
NASHVILLE, TENNESSEE 37203
615.262.4144
www.ohm-engineers.com



811
Know what's below,
Call before you dig.

MADISON CREEK BANK STABILIZATION
GOODLETTSVILLE, TENNESSEE
EXISTING CONDITIONS - ZONE A, B & C

DATES AND REVISIONS	
01/04/2019	REVIEW WITH CITY
02/04/2019	FRAP PERMIT APPLICATION



- CONTRACT NOTES:**
1. THE CONTRACTOR SHALL MAINTAIN THE EXISTING BANK LINE AND SHALL MAINTAIN THE EXISTING BANK LINE AS MUCH AS POSSIBLE.
 2. THE CONTRACTOR SHALL MAINTAIN THE EXISTING BANK LINE AS MUCH AS POSSIBLE.
 3. THE CONTRACTOR SHALL MAINTAIN THE EXISTING BANK LINE AS MUCH AS POSSIBLE.
 4. THE CONTRACTOR SHALL MAINTAIN THE EXISTING BANK LINE AS MUCH AS POSSIBLE.
 5. THE CONTRACTOR SHALL MAINTAIN THE EXISTING BANK LINE AS MUCH AS POSSIBLE.
 6. THE CONTRACTOR SHALL MAINTAIN THE EXISTING BANK LINE AS MUCH AS POSSIBLE.
 7. THE CONTRACTOR SHALL MAINTAIN THE EXISTING BANK LINE AS MUCH AS POSSIBLE.
 8. THE CONTRACTOR SHALL MAINTAIN THE EXISTING BANK LINE AS MUCH AS POSSIBLE.
 9. THE CONTRACTOR SHALL MAINTAIN THE EXISTING BANK LINE AS MUCH AS POSSIBLE.
 10. THE CONTRACTOR SHALL MAINTAIN THE EXISTING BANK LINE AS MUCH AS POSSIBLE.

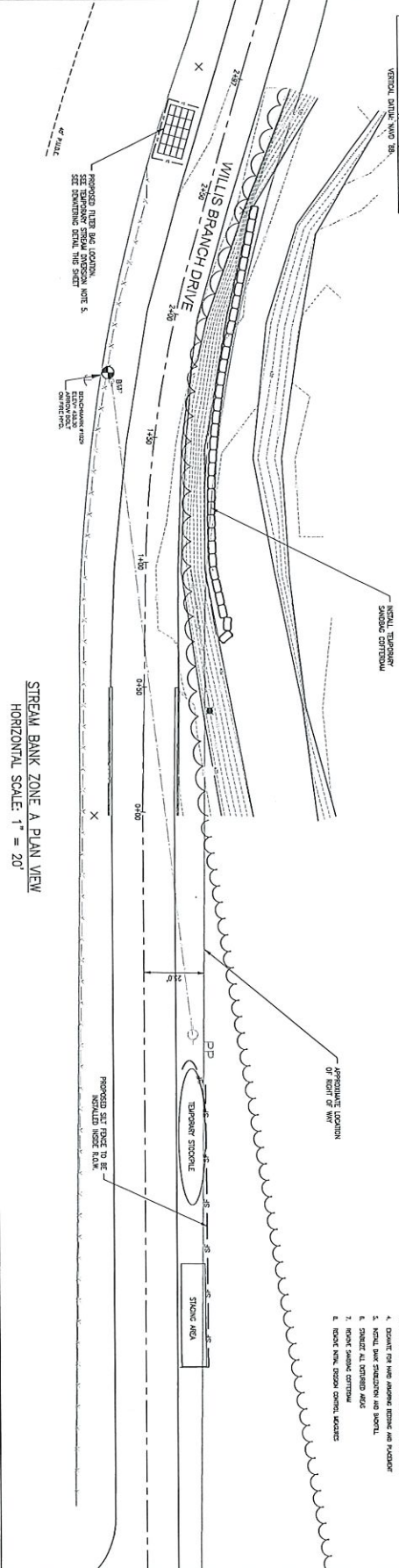
7/4/2019
Matthew S. Brown, PE
Tennessee License #1188
Project # 1079-180332



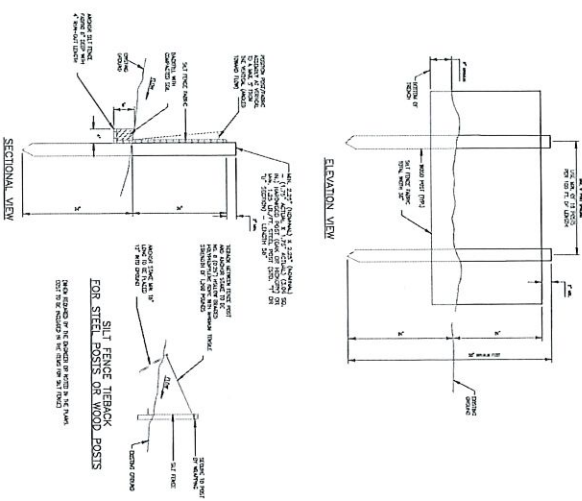
OHM
Advancing Communities®
ARCHITECTS ENGINEERS PLANNERS

1000 Peachtree Street, Suite 1000
Atlanta, Georgia 30309
Phone: 404.487.1000
Fax: 404.487.1001
www.ohm.com

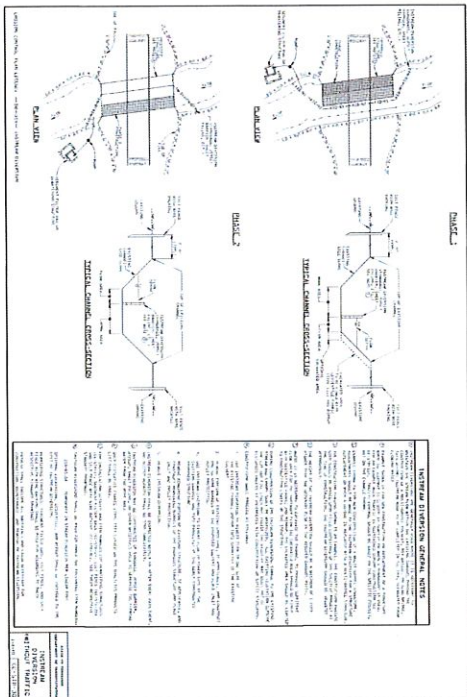
DATE REVISION	BY	DESCRIPTION
02/04/2019	MS	ISSUE FOR PERMIT
02/04/2019	MS	ISSUE FOR PERMIT
02/04/2019	MS	ISSUE FOR PERMIT



STREAM BANK ZONE A PLAN VIEW
HORIZONTAL SCALE: 1" = 20'



SILT FENCE DETAIL
N.T.S.



TEMPORARY STREAM DIVERSION DETAIL
N.T.S.

- DESIGN REVISIONS AND CONSTRUCTION NOTES:**
1. THE CONTRACTOR SHALL PROVIDE A 4' WIDE BUFFER ZONE AND PROTECT EXISTING UTILITIES AND WATER COURSES.
 2. THE CONTRACTOR SHALL PROVIDE A 4' WIDE BUFFER ZONE AND PROTECT EXISTING UTILITIES AND WATER COURSES.
 3. THE CONTRACTOR SHALL PROVIDE A 4' WIDE BUFFER ZONE AND PROTECT EXISTING UTILITIES AND WATER COURSES.
 4. THE CONTRACTOR SHALL PROVIDE A 4' WIDE BUFFER ZONE AND PROTECT EXISTING UTILITIES AND WATER COURSES.
 5. THE CONTRACTOR SHALL PROVIDE A 4' WIDE BUFFER ZONE AND PROTECT EXISTING UTILITIES AND WATER COURSES.
 6. THE CONTRACTOR SHALL PROVIDE A 4' WIDE BUFFER ZONE AND PROTECT EXISTING UTILITIES AND WATER COURSES.
 7. THE CONTRACTOR SHALL PROVIDE A 4' WIDE BUFFER ZONE AND PROTECT EXISTING UTILITIES AND WATER COURSES.
 8. THE CONTRACTOR SHALL PROVIDE A 4' WIDE BUFFER ZONE AND PROTECT EXISTING UTILITIES AND WATER COURSES.
 9. THE CONTRACTOR SHALL PROVIDE A 4' WIDE BUFFER ZONE AND PROTECT EXISTING UTILITIES AND WATER COURSES.
 10. THE CONTRACTOR SHALL PROVIDE A 4' WIDE BUFFER ZONE AND PROTECT EXISTING UTILITIES AND WATER COURSES.
 11. THE CONTRACTOR SHALL PROVIDE A 4' WIDE BUFFER ZONE AND PROTECT EXISTING UTILITIES AND WATER COURSES.
 12. THE CONTRACTOR SHALL PROVIDE A 4' WIDE BUFFER ZONE AND PROTECT EXISTING UTILITIES AND WATER COURSES.
 13. THE CONTRACTOR SHALL PROVIDE A 4' WIDE BUFFER ZONE AND PROTECT EXISTING UTILITIES AND WATER COURSES.
 14. THE CONTRACTOR SHALL PROVIDE A 4' WIDE BUFFER ZONE AND PROTECT EXISTING UTILITIES AND WATER COURSES.
 15. THE CONTRACTOR SHALL PROVIDE A 4' WIDE BUFFER ZONE AND PROTECT EXISTING UTILITIES AND WATER COURSES.
 16. THE CONTRACTOR SHALL PROVIDE A 4' WIDE BUFFER ZONE AND PROTECT EXISTING UTILITIES AND WATER COURSES.
 17. THE CONTRACTOR SHALL PROVIDE A 4' WIDE BUFFER ZONE AND PROTECT EXISTING UTILITIES AND WATER COURSES.
 18. THE CONTRACTOR SHALL PROVIDE A 4' WIDE BUFFER ZONE AND PROTECT EXISTING UTILITIES AND WATER COURSES.
 19. THE CONTRACTOR SHALL PROVIDE A 4' WIDE BUFFER ZONE AND PROTECT EXISTING UTILITIES AND WATER COURSES.
 20. THE CONTRACTOR SHALL PROVIDE A 4' WIDE BUFFER ZONE AND PROTECT EXISTING UTILITIES AND WATER COURSES.

811
Know what's Below.
Call before you dig.

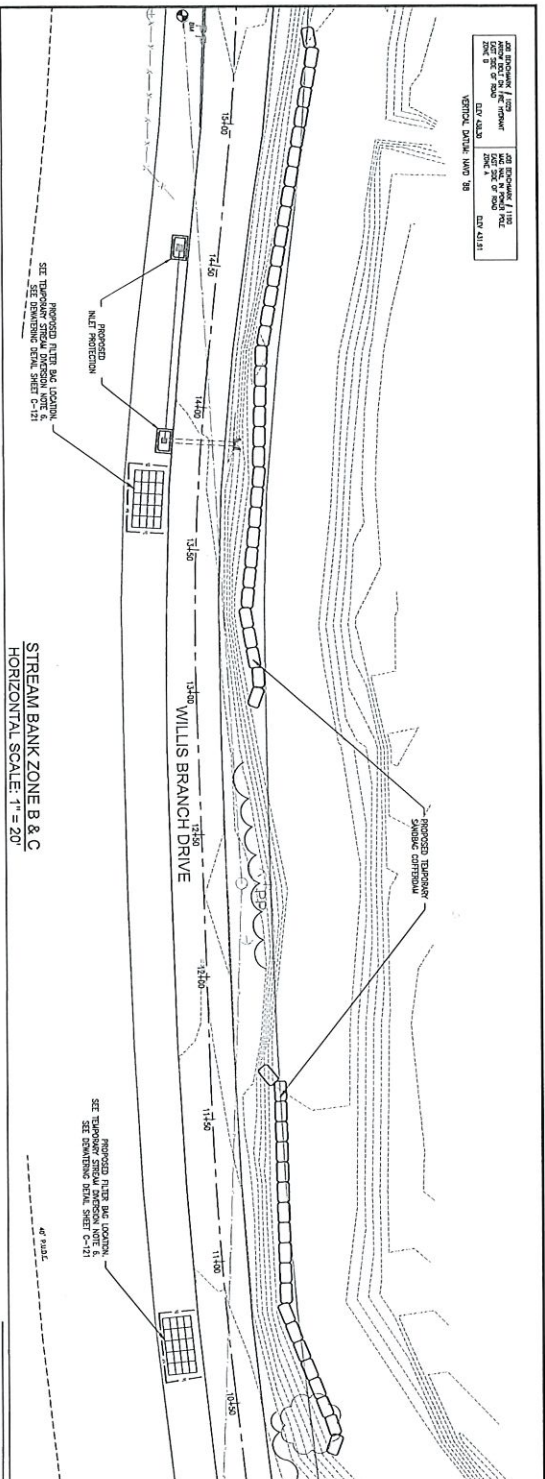
MADISON CREEK BANK STABILIZATION
GOODLETTSVILLE, TENNESSEE
INITIAL EPSC AND TEMPORARY STREAM DIVERSION
PLAN - ZONE A

DATE	REVISION	BY	DESCRIPTION
02/04/2019	1	MS	ISSUE FOR PERMIT
02/04/2019	2	MS	ISSUE FOR PERMIT

Matthew S. Brown, PE
Professional Engineer
Project No. 1073-14-0070

OHM
Advancing Communities
ARCHITECTS ENGINEERS PLANNERS

SHEET
C-120



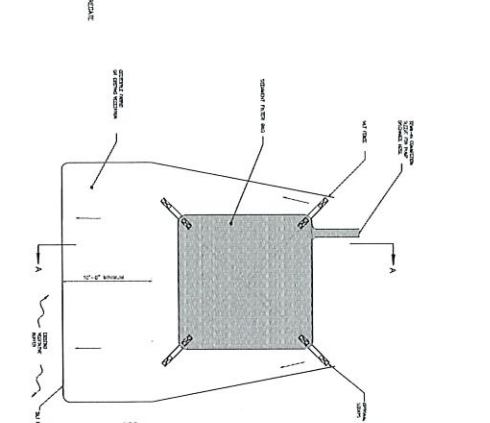
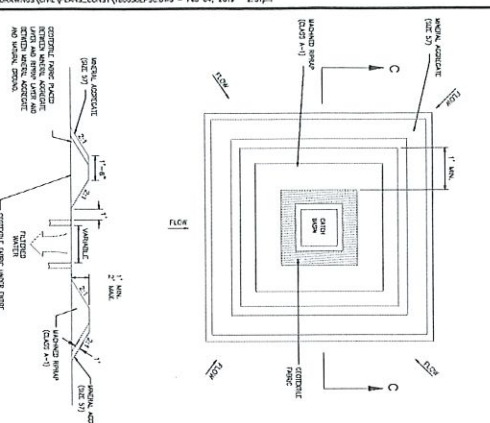
STREAM BANK ZONE B & C
HORIZONTAL SCALE: 1" = 20'

PROPOSED INTERIOR BANK LOCATION
 SEE DIMENSIONS DETAIL SHEET C-11

PROPOSED EXTERIOR BANK LOCATION
 SEE DIMENSIONS DETAIL SHEET C-11

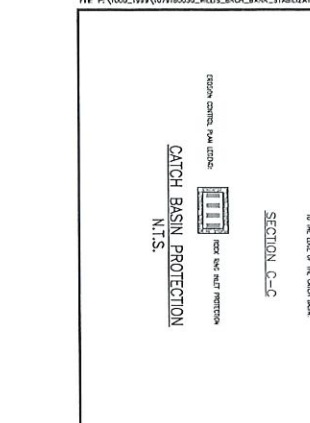
PROPOSED INTERIOR BANK LOCATION
 SEE DIMENSIONS DETAIL SHEET C-11

PROPOSED EXTERIOR BANK LOCATION
 SEE DIMENSIONS DETAIL SHEET C-11



TEMPORARY DEMATERING DETAIL
N.T.S.

1. CONSTRUCTION SHALL BE COMPLETED WITHIN THE PERIOD OF TIME SPECIFIED IN THE CONTRACT DOCUMENTS.
 2. THE CONTRACTOR SHALL MAINTAIN ACCESS TO ALL ADJACENT PROPERTIES AT ALL TIMES.
 3. THE CONTRACTOR SHALL MAINTAIN THE EXISTING GRASS AND SOIL SURFACE AS MUCH AS POSSIBLE.
 4. THE CONTRACTOR SHALL MAINTAIN THE EXISTING UTILITY LINES AND STRUCTURES.
 5. THE CONTRACTOR SHALL MAINTAIN THE EXISTING ROADWAY SURFACE AND STRUCTURES.
 6. THE CONTRACTOR SHALL MAINTAIN THE EXISTING SIDEWALKS AND CURBS.
 7. THE CONTRACTOR SHALL MAINTAIN THE EXISTING FENCES AND BARRIERS.
 8. THE CONTRACTOR SHALL MAINTAIN THE EXISTING TREES AND SHRUBS.
 9. THE CONTRACTOR SHALL MAINTAIN THE EXISTING LANDSCAPE AND PLANTINGS.
 10. THE CONTRACTOR SHALL MAINTAIN THE EXISTING SIGNAGE AND MARKINGS.
 11. THE CONTRACTOR SHALL MAINTAIN THE EXISTING UTILITIES AND STRUCTURES.
 12. THE CONTRACTOR SHALL MAINTAIN THE EXISTING ROADWAY SURFACE AND STRUCTURES.
 13. THE CONTRACTOR SHALL MAINTAIN THE EXISTING SIDEWALKS AND CURBS.
 14. THE CONTRACTOR SHALL MAINTAIN THE EXISTING FENCES AND BARRIERS.
 15. THE CONTRACTOR SHALL MAINTAIN THE EXISTING TREES AND SHRUBS.
 16. THE CONTRACTOR SHALL MAINTAIN THE EXISTING LANDSCAPE AND PLANTINGS.
 17. THE CONTRACTOR SHALL MAINTAIN THE EXISTING SIGNAGE AND MARKINGS.
 18. THE CONTRACTOR SHALL MAINTAIN THE EXISTING UTILITIES AND STRUCTURES.
 19. THE CONTRACTOR SHALL MAINTAIN THE EXISTING ROADWAY SURFACE AND STRUCTURES.
 20. THE CONTRACTOR SHALL MAINTAIN THE EXISTING SIDEWALKS AND CURBS.
 21. THE CONTRACTOR SHALL MAINTAIN THE EXISTING FENCES AND BARRIERS.
 22. THE CONTRACTOR SHALL MAINTAIN THE EXISTING TREES AND SHRUBS.
 23. THE CONTRACTOR SHALL MAINTAIN THE EXISTING LANDSCAPE AND PLANTINGS.
 24. THE CONTRACTOR SHALL MAINTAIN THE EXISTING SIGNAGE AND MARKINGS.
 25. THE CONTRACTOR SHALL MAINTAIN THE EXISTING UTILITIES AND STRUCTURES.



CATCH BASIN PROTECTION
N.T.S.

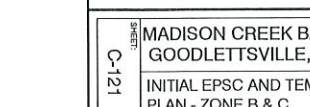
1. CONSTRUCTION SHALL BE COMPLETED WITHIN THE PERIOD OF TIME SPECIFIED IN THE CONTRACT DOCUMENTS.
 2. THE CONTRACTOR SHALL MAINTAIN ACCESS TO ALL ADJACENT PROPERTIES AT ALL TIMES.
 3. THE CONTRACTOR SHALL MAINTAIN THE EXISTING GRASS AND SOIL SURFACE AS MUCH AS POSSIBLE.
 4. THE CONTRACTOR SHALL MAINTAIN THE EXISTING UTILITY LINES AND STRUCTURES.
 5. THE CONTRACTOR SHALL MAINTAIN THE EXISTING ROADWAY SURFACE AND STRUCTURES.
 6. THE CONTRACTOR SHALL MAINTAIN THE EXISTING SIDEWALKS AND CURBS.
 7. THE CONTRACTOR SHALL MAINTAIN THE EXISTING FENCES AND BARRIERS.
 8. THE CONTRACTOR SHALL MAINTAIN THE EXISTING TREES AND SHRUBS.
 9. THE CONTRACTOR SHALL MAINTAIN THE EXISTING LANDSCAPE AND PLANTINGS.
 10. THE CONTRACTOR SHALL MAINTAIN THE EXISTING SIGNAGE AND MARKINGS.
 11. THE CONTRACTOR SHALL MAINTAIN THE EXISTING UTILITIES AND STRUCTURES.
 12. THE CONTRACTOR SHALL MAINTAIN THE EXISTING ROADWAY SURFACE AND STRUCTURES.
 13. THE CONTRACTOR SHALL MAINTAIN THE EXISTING SIDEWALKS AND CURBS.
 14. THE CONTRACTOR SHALL MAINTAIN THE EXISTING FENCES AND BARRIERS.
 15. THE CONTRACTOR SHALL MAINTAIN THE EXISTING TREES AND SHRUBS.
 16. THE CONTRACTOR SHALL MAINTAIN THE EXISTING LANDSCAPE AND PLANTINGS.
 17. THE CONTRACTOR SHALL MAINTAIN THE EXISTING SIGNAGE AND MARKINGS.
 18. THE CONTRACTOR SHALL MAINTAIN THE EXISTING UTILITIES AND STRUCTURES.
 19. THE CONTRACTOR SHALL MAINTAIN THE EXISTING ROADWAY SURFACE AND STRUCTURES.
 20. THE CONTRACTOR SHALL MAINTAIN THE EXISTING SIDEWALKS AND CURBS.
 21. THE CONTRACTOR SHALL MAINTAIN THE EXISTING FENCES AND BARRIERS.
 22. THE CONTRACTOR SHALL MAINTAIN THE EXISTING TREES AND SHRUBS.
 23. THE CONTRACTOR SHALL MAINTAIN THE EXISTING LANDSCAPE AND PLANTINGS.
 24. THE CONTRACTOR SHALL MAINTAIN THE EXISTING SIGNAGE AND MARKINGS.
 25. THE CONTRACTOR SHALL MAINTAIN THE EXISTING UTILITIES AND STRUCTURES.

CONTRACTOR'S OBLIGATIONS AND GENERAL CONDITIONS:

1. THE CONTRACTOR SHALL BE RESPONSIBLE FOR OBTAINING ALL NECESSARY PERMITS AND APPROVALS FROM THE APPROPRIATE AGENCIES.
2. THE CONTRACTOR SHALL MAINTAIN ACCESS TO ALL ADJACENT PROPERTIES AT ALL TIMES.
3. THE CONTRACTOR SHALL MAINTAIN THE EXISTING GRASS AND SOIL SURFACE AS MUCH AS POSSIBLE.
4. THE CONTRACTOR SHALL MAINTAIN THE EXISTING UTILITY LINES AND STRUCTURES.
5. THE CONTRACTOR SHALL MAINTAIN THE EXISTING ROADWAY SURFACE AND STRUCTURES.
6. THE CONTRACTOR SHALL MAINTAIN THE EXISTING SIDEWALKS AND CURBS.
7. THE CONTRACTOR SHALL MAINTAIN THE EXISTING FENCES AND BARRIERS.
8. THE CONTRACTOR SHALL MAINTAIN THE EXISTING TREES AND SHRUBS.
9. THE CONTRACTOR SHALL MAINTAIN THE EXISTING LANDSCAPE AND PLANTINGS.
10. THE CONTRACTOR SHALL MAINTAIN THE EXISTING SIGNAGE AND MARKINGS.
11. THE CONTRACTOR SHALL MAINTAIN THE EXISTING UTILITIES AND STRUCTURES.
12. THE CONTRACTOR SHALL MAINTAIN THE EXISTING ROADWAY SURFACE AND STRUCTURES.
13. THE CONTRACTOR SHALL MAINTAIN THE EXISTING SIDEWALKS AND CURBS.
14. THE CONTRACTOR SHALL MAINTAIN THE EXISTING FENCES AND BARRIERS.
15. THE CONTRACTOR SHALL MAINTAIN THE EXISTING TREES AND SHRUBS.
16. THE CONTRACTOR SHALL MAINTAIN THE EXISTING LANDSCAPE AND PLANTINGS.
17. THE CONTRACTOR SHALL MAINTAIN THE EXISTING SIGNAGE AND MARKINGS.
18. THE CONTRACTOR SHALL MAINTAIN THE EXISTING UTILITIES AND STRUCTURES.
19. THE CONTRACTOR SHALL MAINTAIN THE EXISTING ROADWAY SURFACE AND STRUCTURES.
20. THE CONTRACTOR SHALL MAINTAIN THE EXISTING SIDEWALKS AND CURBS.
21. THE CONTRACTOR SHALL MAINTAIN THE EXISTING FENCES AND BARRIERS.
22. THE CONTRACTOR SHALL MAINTAIN THE EXISTING TREES AND SHRUBS.
23. THE CONTRACTOR SHALL MAINTAIN THE EXISTING LANDSCAPE AND PLANTINGS.
24. THE CONTRACTOR SHALL MAINTAIN THE EXISTING SIGNAGE AND MARKINGS.
25. THE CONTRACTOR SHALL MAINTAIN THE EXISTING UTILITIES AND STRUCTURES.

TEMPORARY DEMATERING DETAIL:

1. CONSTRUCTION SHALL BE COMPLETED WITHIN THE PERIOD OF TIME SPECIFIED IN THE CONTRACT DOCUMENTS.
2. THE CONTRACTOR SHALL MAINTAIN ACCESS TO ALL ADJACENT PROPERTIES AT ALL TIMES.
3. THE CONTRACTOR SHALL MAINTAIN THE EXISTING GRASS AND SOIL SURFACE AS MUCH AS POSSIBLE.
4. THE CONTRACTOR SHALL MAINTAIN THE EXISTING UTILITY LINES AND STRUCTURES.
5. THE CONTRACTOR SHALL MAINTAIN THE EXISTING ROADWAY SURFACE AND STRUCTURES.
6. THE CONTRACTOR SHALL MAINTAIN THE EXISTING SIDEWALKS AND CURBS.
7. THE CONTRACTOR SHALL MAINTAIN THE EXISTING FENCES AND BARRIERS.
8. THE CONTRACTOR SHALL MAINTAIN THE EXISTING TREES AND SHRUBS.
9. THE CONTRACTOR SHALL MAINTAIN THE EXISTING LANDSCAPE AND PLANTINGS.
10. THE CONTRACTOR SHALL MAINTAIN THE EXISTING SIGNAGE AND MARKINGS.
11. THE CONTRACTOR SHALL MAINTAIN THE EXISTING UTILITIES AND STRUCTURES.
12. THE CONTRACTOR SHALL MAINTAIN THE EXISTING ROADWAY SURFACE AND STRUCTURES.
13. THE CONTRACTOR SHALL MAINTAIN THE EXISTING SIDEWALKS AND CURBS.
14. THE CONTRACTOR SHALL MAINTAIN THE EXISTING FENCES AND BARRIERS.
15. THE CONTRACTOR SHALL MAINTAIN THE EXISTING TREES AND SHRUBS.
16. THE CONTRACTOR SHALL MAINTAIN THE EXISTING LANDSCAPE AND PLANTINGS.
17. THE CONTRACTOR SHALL MAINTAIN THE EXISTING SIGNAGE AND MARKINGS.
18. THE CONTRACTOR SHALL MAINTAIN THE EXISTING UTILITIES AND STRUCTURES.
19. THE CONTRACTOR SHALL MAINTAIN THE EXISTING ROADWAY SURFACE AND STRUCTURES.
20. THE CONTRACTOR SHALL MAINTAIN THE EXISTING SIDEWALKS AND CURBS.
21. THE CONTRACTOR SHALL MAINTAIN THE EXISTING FENCES AND BARRIERS.
22. THE CONTRACTOR SHALL MAINTAIN THE EXISTING TREES AND SHRUBS.
23. THE CONTRACTOR SHALL MAINTAIN THE EXISTING LANDSCAPE AND PLANTINGS.
24. THE CONTRACTOR SHALL MAINTAIN THE EXISTING SIGNAGE AND MARKINGS.
25. THE CONTRACTOR SHALL MAINTAIN THE EXISTING UTILITIES AND STRUCTURES.



811
 Know what's below.
 Call before you dig.

MAISON TRANSDUCER STATE WAREHOUSE LOT FRONT

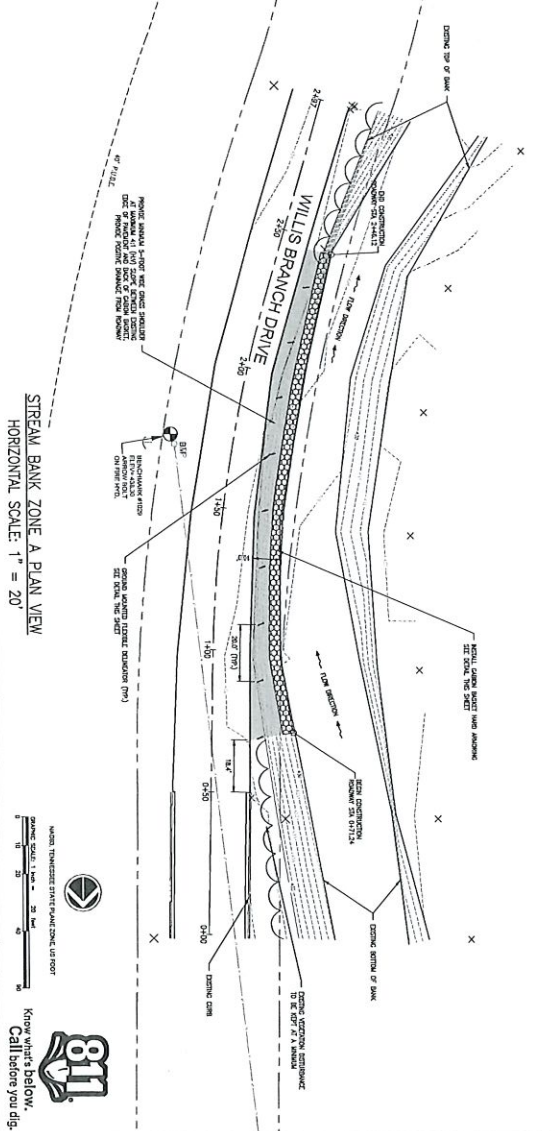
DATE	REVISIONS
02/04/2019	REVIEW WITH CITY
02/04/2019	REVIEW WITH CITY
02/04/2019	REVIEW WITH CITY

Madison S. Brown, P.E.
 Tennessee License # 11888
 2/04/2019
 Checked by: NBS
 Drawn by: NBS
 Project #: 1073-140003

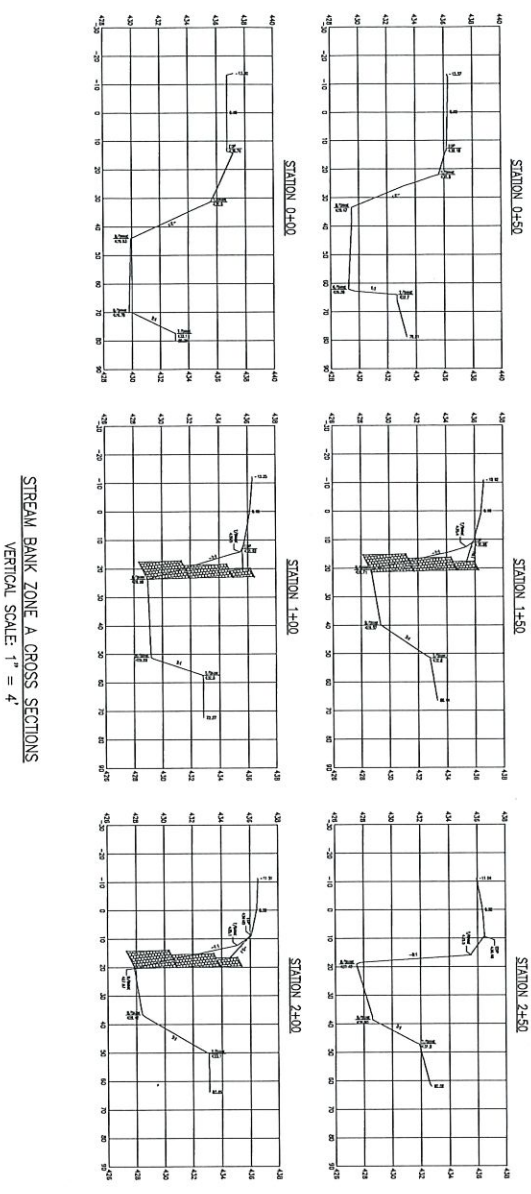
OHM
 Advancing Communities®
 ARCHITECTS ENGINEERS PLANNERS

1100 THE OAKS SQUARE
 915 HUNTER STREET #3103
 SUITE 100
 MEMPHIS, TN 38103
 PHONE 901.443.5544
 FAX 901.443.5544

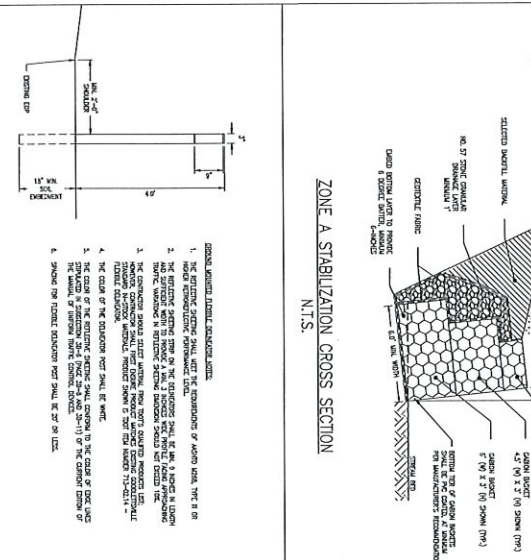
NO. 1	NO. 2	NO. 3	NO. 4
DATE	DATE	DATE	DATE
BY	BY	BY	BY
CHK	CHK	CHK	CHK



- LEGEND**
- PROPOSED CARBON BASKET HARD ARMOURING
 - UNUSUAL 5-FOOT WIDE GRASS SHOULDER
- CONSTRUCTION NOTES**
1. THE PROPOSED CARBON BASKET SHALL BE CONSTRUCTED TO BE 2' HIGH AT A MINIMUM.
 2. THE PROPOSED CARBON BASKET SHALL BE CONSTRUCTED TO BE 2' HIGH AT A MINIMUM.
 3. THE PROPOSED CARBON BASKET SHALL BE CONSTRUCTED TO BE 2' HIGH AT A MINIMUM.
 4. THE PROPOSED CARBON BASKET SHALL BE CONSTRUCTED TO BE 2' HIGH AT A MINIMUM.
 5. THE PROPOSED CARBON BASKET SHALL BE CONSTRUCTED TO BE 2' HIGH AT A MINIMUM.
 6. THE PROPOSED CARBON BASKET SHALL BE CONSTRUCTED TO BE 2' HIGH AT A MINIMUM.
 7. THE PROPOSED CARBON BASKET SHALL BE CONSTRUCTED TO BE 2' HIGH AT A MINIMUM.



STREAM BANK ZONE A CROSS SECTIONS
VERTICAL SCALE: 1" = 4'



- ZONE A STABILIZATION CROSS SECTION N.T.S.**
1. THE PROPOSED CARBON BASKET SHALL BE CONSTRUCTED TO BE 2' HIGH AT A MINIMUM.
 2. THE PROPOSED CARBON BASKET SHALL BE CONSTRUCTED TO BE 2' HIGH AT A MINIMUM.
 3. THE PROPOSED CARBON BASKET SHALL BE CONSTRUCTED TO BE 2' HIGH AT A MINIMUM.
 4. THE PROPOSED CARBON BASKET SHALL BE CONSTRUCTED TO BE 2' HIGH AT A MINIMUM.
 5. THE PROPOSED CARBON BASKET SHALL BE CONSTRUCTED TO BE 2' HIGH AT A MINIMUM.
 6. THE PROPOSED CARBON BASKET SHALL BE CONSTRUCTED TO BE 2' HIGH AT A MINIMUM.
 7. THE PROPOSED CARBON BASKET SHALL BE CONSTRUCTED TO BE 2' HIGH AT A MINIMUM.

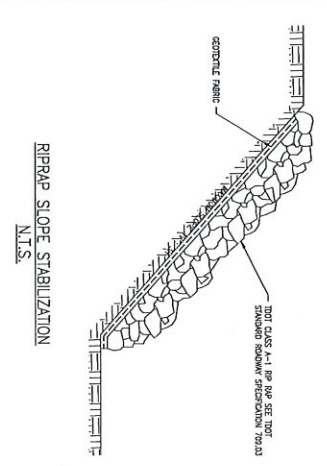
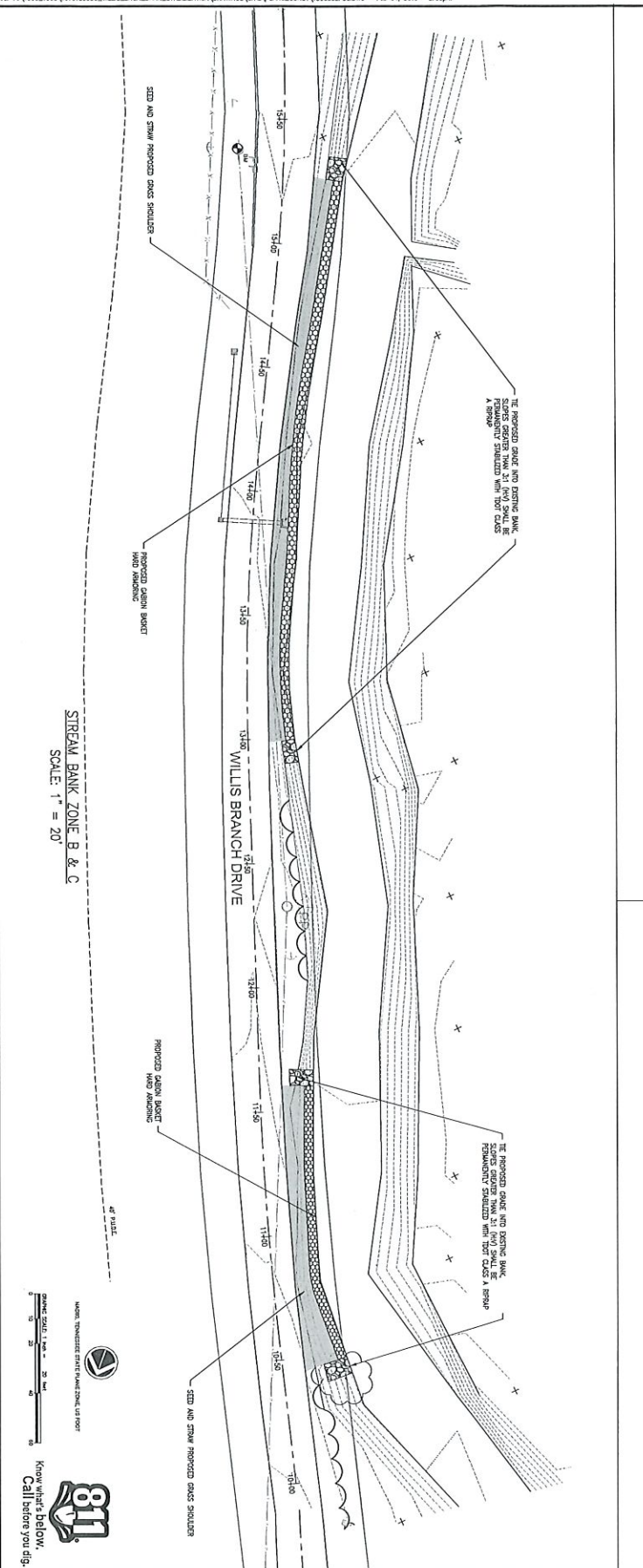
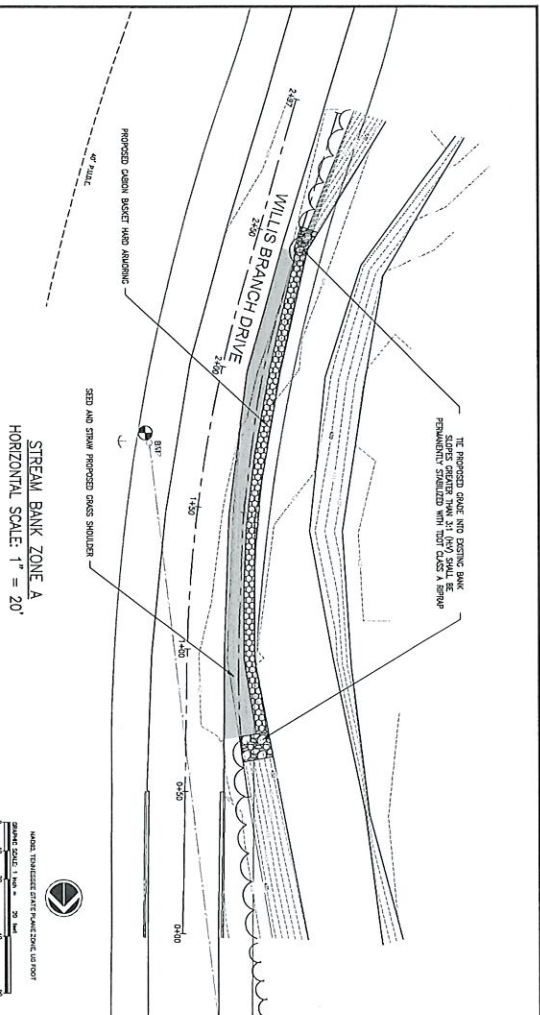
MADISON CREEK BANK STABILIZATION GOODLETTSVILLE, TENNESSEE	
STABILIZATION PLAN - ZONE A	

DATES AND REVISIONS	
NO. 1	REVIEW WITH CITY ENGINEER
NO. 2	REVISION
NO. 3	REVISION
NO. 4	REVISION

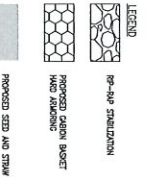
7/04/2019
Matthew S. Brown, PE
Professional Engineer
No. 1073-3-00003

OHM
Advancing Communities
ARCHITECTS ENGINEERS PLANNERS

1515 AVENUE 504/46
SUITE 100
MEMPHIS, TENNESSEE 38103
PHONE: 901.433.2541
FAX: 901.433.2542
WWW.OHM-INC.COM



- GENERAL NOTES:**
1. THE DESIGN PROVISIONS AND STABILIZATION TYPES ARE BASED ON THE ASSUMPTIONS AND LIMITATIONS OF THE DESIGN AND SHOULD BE REVIEWED AND APPROVED BY THE APPROPRIATE AGENCIES PRIOR TO CONSTRUCTION.
 2. THE PROPOSED DAM BOCKETS SHALL BE PERMANENTLY STABILIZED WITH TOP CLASS A RIPRAP.
 3. THE PROPOSED DAM BOCKETS SHALL BE PERMANENTLY STABILIZED WITH TOP CLASS A RIPRAP.
 4. THE PROPOSED DAM BOCKETS SHALL BE PERMANENTLY STABILIZED WITH TOP CLASS A RIPRAP.
 5. THE PROPOSED DAM BOCKETS SHALL BE PERMANENTLY STABILIZED WITH TOP CLASS A RIPRAP.
 6. THE PROPOSED DAM BOCKETS SHALL BE PERMANENTLY STABILIZED WITH TOP CLASS A RIPRAP.



DATES AND REVISIONS	
DATE	DESCRIPTION
02/04/2019	REVIEW BY CITY
02/04/2019	DESIGNED BY: LMS
02/04/2019	CHECKED BY: EBS
02/04/2019	PROJECT # 1078180030

Madison Creek Bank Stabilization
 2/04/2019
 Drawn By: LMS
 Checked By: EBS
 Project # 1078180030



OHM Advancing Communities
 ARCHITECTS ENGINEERS PLANNERS
 208 IONIA AVENUE SOUTH
 111 111
 PHONE 615.414.1554
 444 IONIA AVENUE SOUTH
 PHONE 615.414.1554