

City of
SHELBYVILLE
Tennessee

DATE: January 5, 2018

NOTICE TO BIDDERS

Notice is hereby given that the CITY OF SHELBYVILLE, TENNESSEE is advertising for sealed bids on:

**GUTTER GRATING FOR INDOOR AND OUTDOOR POOLS
AT SHELBYVILLE RECREATION CENTER**

Bids will be accepted by the City of Shelbyville Purchasing Office, 201 N. Spring Street, Shelbyville, TN 37160 or may be mailed to P.O. Box 185, Shelbyville, TN 37162 **until 2:00 P.M. on Tuesday, January 23, 2018**. Any bids received after the scheduled closing time for receipt of bids will be returned to the bidder unopened.

The bids shall be opened and read aloud during a public meeting of the City Council appointed BID COMMITTEE on Tuesday, January 23, 2018 at 2:00 P.M. at CITY HALL, 201 N. Spring Street. Award of the bid will be made at the next scheduled City Council meeting at the Shelbyville City Hall Annex. (February 8, 2018)

GENERAL INFORMATION

It will be the sole responsibility of the Bidder to deliver personally or by mail the proposal or proposals to the City of Shelbyville Purchasing Office, 201 N. Spring Street, Shelbyville, TN 37160 on or before the closing hour and date announced for the receipt of the bids. **The envelope must be sealed and marked on the outside “Sealed Bid on GUTTER GRATING FOR INDOOR AND OUTDOOR POOLS AT SHELBYVILLE RECREATION CENTER”.**

The City is exempt from taxes imposed by State and/or Federal Government. Exemption certificate, if required, will be furnished by the successful bidder and will be completed by the City.

Each variance to these specifications must be specifically stated by the bidder in the bidding proposal. The City Council reserves the right to reject any or all proposals, to waive informalities and to accept all or any part of any proposal as described therein, as they deem necessary to be in the best interest of the City.

City of Shelbyville

Bidders guarantee that the prices quoted in the bid will remain firm from the date of the bid opening until the completion of delivery.

All proposals shall be made on forms furnished by the CITY. Supporting information shall be on the bidder's stationery.

All proposals must indicate the firm's name and address and be signed in ink by an officer or employee having authority to bind the company or firm.

The intent of these specifications is to insure delivery of a new complete unit for operation. Omission of any essential detail from these specifications does not relieve the supplier from furnishing such unit. All bids must be on new models. This provision excludes surplus, used or demonstrators.

The bidder, by executing a contract or bid proposal on the terms of the invitation to bid, warrants the product that is supplied to be buyer shall remain fully in accord with the specifications and to be of the highest quality. In the event the product, as supplied to the buyer, is found to be defective or does not conform to the specifications, the buyer reserves the right to cancel the order upon written notice to the supplier and return such product to the supplier at the supplier's expense.

Payments will commence or be made in full after delivery and acceptance of product. All documents, invoice, title and exemption certificate shall be presented to the City of Shelbyville Purchasing Office.

All Bidders must comply with A.D.A. guidelines if required.

All Bidders must be in compliance with Title VI, Civil Rights Act of 1964, which specifies that: No person in the United States shall, on the grounds of race, color or national origin, be excluded from participation in, be denied the benefits of, or be subjected to discrimination under a program or activity receiving federal financial assistance from the Department of Transportation or the U.S. Department of Justice.

The City of Shelbyville is subject to the Open Records Act, TCA 10-7-501, et. Seq. Bidders are advised that all documents submitted on behalf of this invitation to bid shall be open to the public for viewing and inspection.

The City of Shelbyville will fulfill Public Record Requests in compliance with Tennessee Open Records Act.

Failure on the part of the bidder to comply with all instructions herein may result in bid rejection.

BID FORM

TO: CITY OF SHELBYVILLE
201 N. SPRING ST.
SHELBYVILLE, TN 37160

Date: _____

IN ACCORDANCE WITH YOUR INVITATION TO BID ON:

GUTTER GRATING FOR INDOOR AND OUTDOOR POOLS AT SHELBYVILLE RECREATION CENTER

WE HEREBY SUBMIT THE FOLLOWING BID:

<u>MINIMUM SPECIFICATIONS</u>	<u>MEETS</u>	<u>EXCEEDS</u>	<u>DOESN'T MEET</u>
-------------------------------	--------------	----------------	---------------------

GUTTER GRATING FOR INDOOR
AND OUTDOOR POOLS –
Product only, Recreation staff will install

370 lineal feet of 8 ¼" x 1" PVC
GRATING STRAIGHT with four inside
90 degree corners (indoor pool)

240 lineal feet of 8" x 1" PVC
GRATING STRAIGHT with three inside
90 degree corners and one 90 degree
outside corner (outdoor pool)

24 lineal feet of 9 11/16" x 1" PVC
GRATING STRAIGHT (zero entry)

Color: white

To include delivery to:
Shelbyville Rec Ctr
220 Tulip Tree Rd.
Shelbyville, TN 37160

Pool diagrams, available original drawings, measurements, and photos of existing grates attached

SITE VISIT HIGHLY RECOMMENDED

Attached pictures may also be viewed at our website, www.shelbyvilletn.org. Select Departments, Purchasing, and Open Solicitations. This selection will re-direct you to Vendor Registry. Select our current open solicitation named "Gutter Grating for Indoor/Outdoor Pools at Shelbyville Recreation Center. The pictures included with the solicitation online are larger.

To be included with submission:

- list all warranty information
- complete specification sheet
- estimated delivery date
- Any variations to the above Specifications

A current business license must be furnished upon request.

Any questions may be directed to Parks and Recreation Director, Mike Alsup, at 931-684-9780 or Lori Saddler, Purchasing / IT Director, at 931-684-2691.

We hereby submit the following price(s) for your consideration:

_____	\$ _____
_____	\$ _____
_____	\$ _____

Signed: _____

Title: _____

Date: _____

Email: _____

Phone #: _____

Company Name and Address: _____

Bid quote good for _____ days.

PERIMETER SECTION SCHEDULE

SECT NO	TYPE	DESCRIPTION			MISC.	JET	OTHER
		DIM. A'	DIM. B'	<<C'			
1	III	10'-10"	11'-3"	45°		1-R	
2	STR	11'-11 1/2"	11'-11 1/2"				
3	STR	11'-11 1/2"	11'-11 1/2"				
4	STR	11'-11 1/2"	11'-11 1/2"				
5	STR	11'-11 1/2"	11'-11 1/2"			1-R	
6	STR	11'-11 1/2"	11'-11 1/2"				
7	STR	11'-11 1/2"	11'-11 1/2"				
8	STR	4'-2"	4'-2"				1' ST.ST. COUPLING
9	STR	11'-1"	11'-1"				
10	STR	11'-11 1/2"	11'-11 1/2"				
11	STR	11'-11 1/2"	11'-11 1/2"			1-R	(1) LLA
12	STR	11'-11 1/2"	11'-11 1/2"				
13	STR	11'-11 1/2"	11'-11 1/2"				
14	STR	11'-11 1/2"	11'-11 1/2"				
15	II	10'-10"	11'-3"	45°			8' ASR; 10' P.D; 8' RETN.
16	III	10'-10"	11'-3"	45°	GRP INLT		(1) RLA
17	STR	11'-11 1/2"	11'-11 1/2"				(2) RLA; (1) WAF
18	STR	11'-4 1/2"	11'-4 1/2"				(1) RLA; (1) WAF
19	II	10'-10"	11'-3"	45°	GRP INLT	1-L	(1) RLA
20	III	10'-10"	11'-3"	45°			
21	STR	11'-11 1/2"	11'-11 1/2"				
22	STR	11'-11 1/2"	11'-11 1/2"				
23	STR	11'-11 1/2"	11'-11 1/2"				
24	STR	11'-11 1/2"	11'-11 1/2"			1-L	(1) LLA
25	STR	11'-11 1/2"	11'-11 1/2"				
26	STR	11'-1"	11'-1"				
27	STR	4'-2"	4'-2"				
28	STR	11'-11 1/2"	11'-11 1/2"				
29	STR	11'-11 1/2"	11'-11 1/2"				
30	STR	11'-11 1/2"	11'-11 1/2"			1-L	
31	STR	11'-11 1/2"	11'-11 1/2"				
32	STR	11'-11 1/2"	11'-11 1/2"				
33	STR	11'-11 1/2"	11'-11 1/2"				
34	II	10'-10"	11'-3"	45°		1-L	AAR
35	III	10'-10"	11'-3"	45°	GRP INLT	1-R	VENT; TRNS. CONV; (1) RLA
36	STR	11'-11 1/2"	11'-11 1/2"				(2) RLA; VENT
37	STR	11'-4 1/2"	11'-4 1/2"				(1) RLA; VENT
38	II	10'-10"	11'-3"	45°	GRP INLT		VENT; TRNS. CONV; (1) RLA

5'-6"

1'-0"

1'-6"

Indoor Pool 3490-1B

15'-6"

MATERIAL SCHEDULE

STAINLESS STEEL TUBE IFRS-ASR	426'-11"		
STAINLESS STEEL GUTTER	432'-0"		
ANCHOR ANGLES 1 1/2 X 1 1/2 X 3/16 X 12"	116		
STIFFENER BRACKET - 18" LG.	116		
8 1/4" WIDE PVC BAR GRATE	74 SECT.	SEE DWG.3490-5	
"U" BAR ANCHORS	116		
NYLON INLET NOZZLES 9/16" O.D. I.D. 7/16"	156		
Ø RUBBER TEST PLUGS	156		
JET WASH FITTINGS #9018-01 (4)R & (4)L	8		
JET WASH FITTING CAPS FOR TEST-1/8"	8		
RACING LINE ANCHORS #9022 FIELD INSTALL	10		
LIFE LINE ANCHORS #9026 SHOP INSTALL	2		
ACCESSORY PACK OF PUNCH OUTS	1		
#9023 WATER AGITATOR FITTING	2		
DEPTH MARKER DECAL (SEE CHART)	1 SET		
AUTO AIR RELEASE	1		
10" P.D. CONNECTION	1		
8" RETURN CONNECTION	1	SHIP LOOSE NO CUT-OUTS	
8" ASR SUCTION CONNECT.	1		
SCOTCH BRITE PADS	6		
TRANSFER CONV. W/ ANTI-VORTEX CHANNEL	2		
STD. CLOSURE PLATE @ BUTT JOINTS	34		
1" ST.ST. COUPLING - ASR CONTROL	1		

FACE OF TUBE.

FOR FIELD CUT.
W CARBON TYPE

G.P.M.

CONCRETE



FABRICATION DRAWING

SHELBYVILLE RECREATION CENTER
SHELBYVILLE, TN.

CONTRACTOR - BUILDER

PADDOCK CONSTRUCTION CO.

PADDOCK POOL EQUIP. CO. INC.
ROCK HILL, S.C. 29730

W.D. NO.
D-15379

SCALE: 1/8"=1'-0"

DATE: 4-26-95

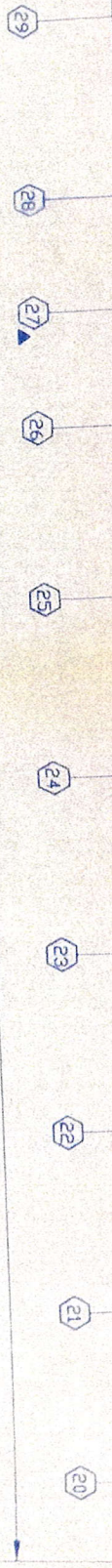
DRAWN BY: NEA

REV. NO. 1

DRAWING NO.
3490-1

BY: *RGK* 6-28-95
DATE

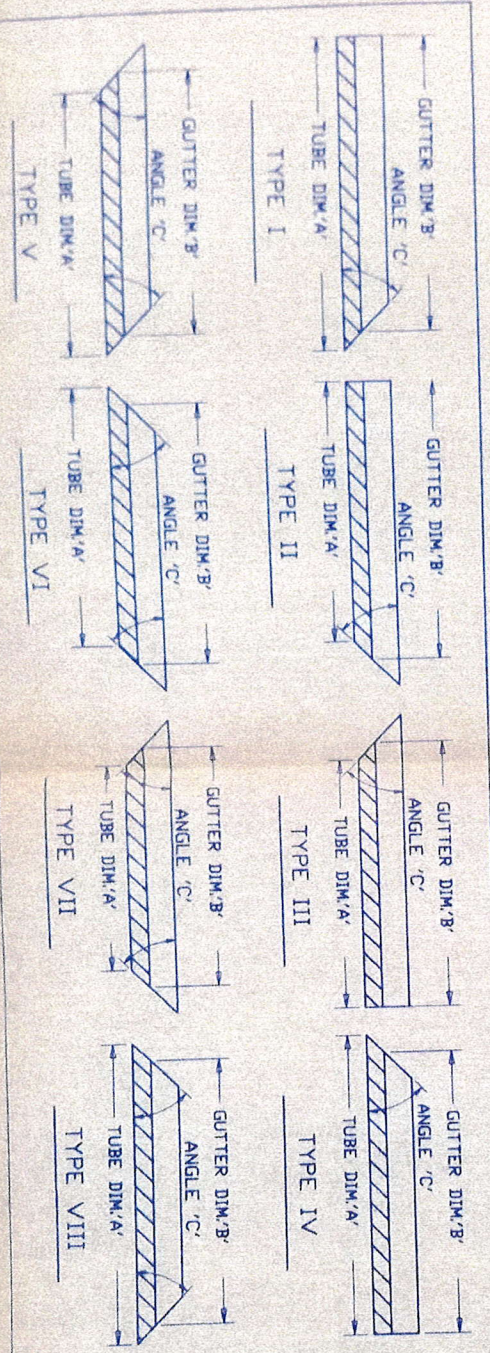
Indoor Pool 3490-1C



168'-3 1/2'

DEPTH MARKER SET

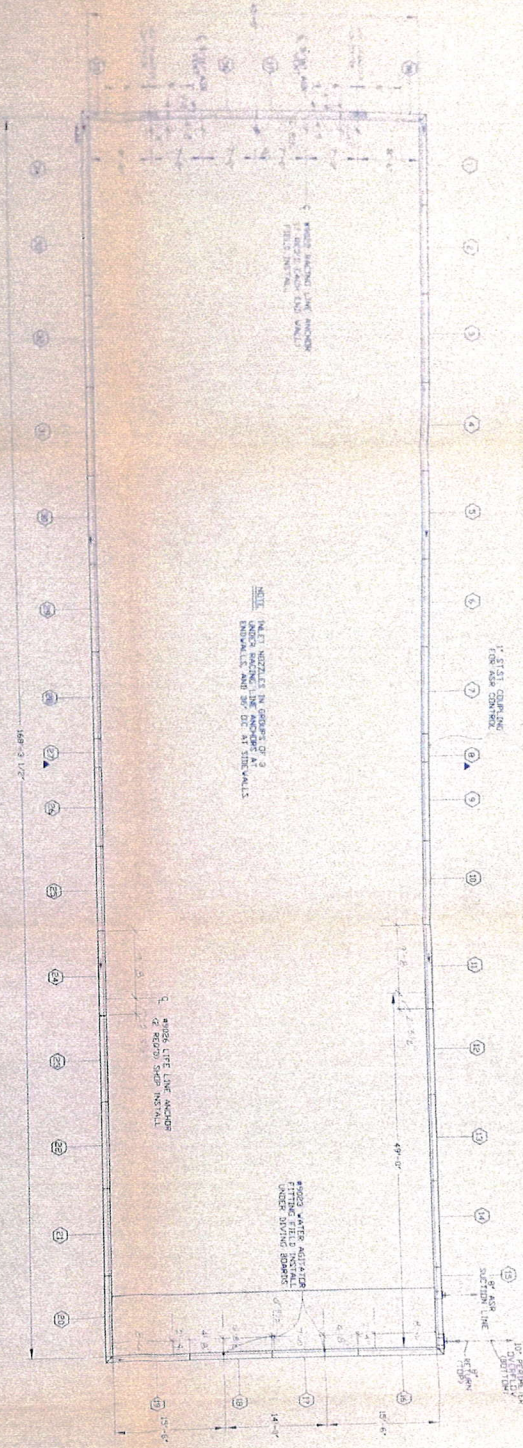
QTY	DESCRIPTION
3	4FT-6IN.
12	SFT.
7	12FT.



- NOTES:
1. POOL DIMENSIONS ARE FROM FACE TO FACE OF TUBE.
 2. DENOTES SURGE WEIRS.
 3. DENOTES JET WASH FITTINGS.
 4. DENOTES (2) EXTRA MATERIAL FOR FIELD CUT.
 5. ALL STAINLESS STEEL SHALL BE LDW CARBON TYPE 304 UNLESS OTHERWISE INDICATED.
 6. TOTAL RECIRCULATING RATE IS: 141 GPM.
 7. POOL PERIMETER IS: 426 FT. 7 IN.
 8. TYPE OF POOL CONSTRUCTION IS SHOTCRETE
 9. POOL AREA IS: 7573.125 SQ.FT.
 10. POOL LOCATION IS: INDOORS
 11. TYPE OF RECIRCULATION SYSTEM IFRS-ASR SYSTEM III

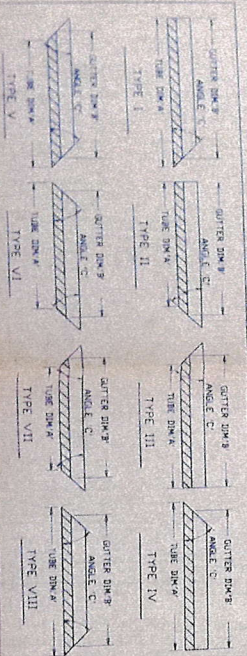
NO	REVISION	BY	DATE
1	RELEASE TO SHOP	CM	6-23-83
2			
3			

Indoor Pool 3490-1D



NOTE: 1. ALL WELLS IN SQUARES OF 2' UNDER WALKING LINE ANCHORS AT EXTERMINALS AND 30\"/>

NOTE: 2. WELLS LIFE LINE ANCHORS AT EXTERMINALS AND 30\"/>



DEPTH MARKER SET

1	1/2\"/>
2	1\"/>
3	1 1/2\"/>
4	2\"/>
5	2 1/2\"/>
6	3\"/>
7	3 1/2\"/>
8	4\"/>
9	4 1/2\"/>
10	5\"/>
11	5 1/2\"/>
12	6\"/>
13	6 1/2\"/>
14	7\"/>
15	7 1/2\"/>
16	8\"/>
17	8 1/2\"/>
18	9\"/>
19	9 1/2\"/>
20	10\"/>
21	10 1/2\"/>
22	11\"/>
23	11 1/2\"/>
24	12\"/>

- NOTES:
1. PERMITS DIMENSIONS ARE FROM FACE TO FACE OF TUBE
 2. ALL DIMENSIONS ARE IN FEET AND INCHES
 3. ALL DIMENSIONS ARE TO CENTERLINE UNLESS OTHERWISE INDICATED
 4. ALL DIMENSIONS ARE TO CENTERLINE UNLESS OTHERWISE INDICATED
 5. ALL DIMENSIONS ARE TO CENTERLINE UNLESS OTHERWISE INDICATED
 6. ALL DIMENSIONS ARE TO CENTERLINE UNLESS OTHERWISE INDICATED
 7. PERMITS DIMENSIONS ARE FROM FACE TO FACE OF TUBE
 8. PERMITS DIMENSIONS ARE FROM FACE TO FACE OF TUBE
 9. PERMITS DIMENSIONS ARE FROM FACE TO FACE OF TUBE
 10. PERMITS DIMENSIONS ARE FROM FACE TO FACE OF TUBE
 11. PERMITS DIMENSIONS ARE FROM FACE TO FACE OF TUBE

NO.	DATE	BY	REVISION
1			
2			
3			

PERIMETER SECTION SCHEDULE

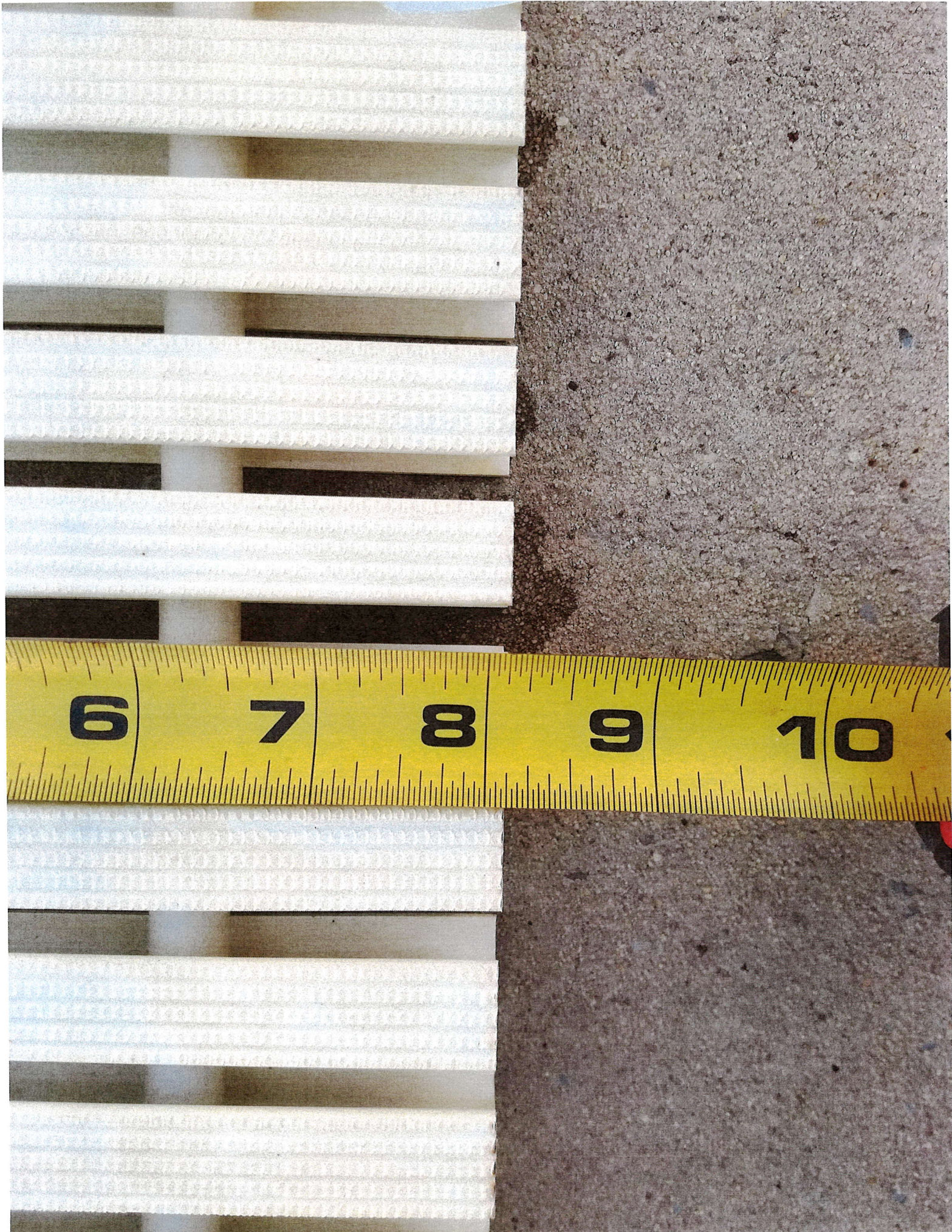
NO.	TYPE	DESCRIPTION	QTY	WTS.	WT.	OTHER
1	1	1\"/>				
2	2	2\"/>				
3	3	3\"/>				
4	4	4\"/>				
5	5	5\"/>				
6	6	6\"/>				
7	7	7\"/>				
8	8	8\"/>				
9	9	9\"/>				
10	10	10\"/>				
11	11	11\"/>				
12	12	12\"/>				
13	13	13\"/>				
14	14	14\"/>				
15	15	15\"/>				
16	16	16\"/>				
17	17	17\"/>				
18	18	18\"/>				
19	19	19\"/>				
20	20	20\"/>				
21	21	21\"/>				
22	22	22\"/>				
23	23	23\"/>				
24	24	24\"/>				

MATERIAL SCHEDULE

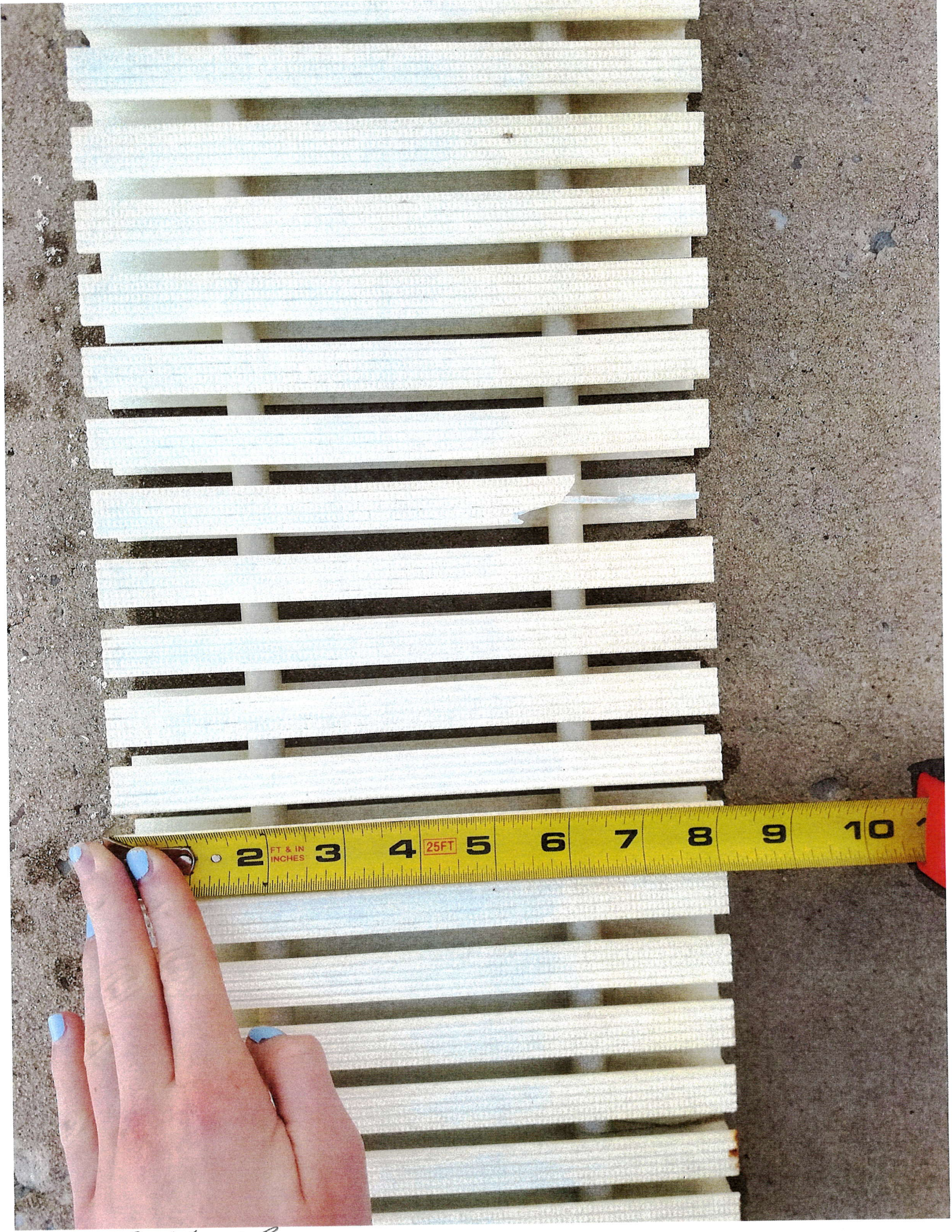
NO.	DESCRIPTION	QTY	WTS.	WT.	OTHER
1	STAINLESS STEEL TUBE 1\"/>				
2	STAINLESS STEEL TUBE 2\"/>				
3	STAINLESS STEEL TUBE 3\"/>				
4	STAINLESS STEEL TUBE 4\"/>				
5	STAINLESS STEEL TUBE 5\"/>				
6	STAINLESS STEEL TUBE 6\"/>				
7	STAINLESS STEEL TUBE 7\"/>				
8	STAINLESS STEEL TUBE 8\"/>				
9	STAINLESS STEEL TUBE 9\"/>				
10	STAINLESS STEEL TUBE 10\"/>				
11	STAINLESS STEEL TUBE 11\"/>				
12	STAINLESS STEEL TUBE 12\"/>				
13	STAINLESS STEEL TUBE 13\"/>				
14	STAINLESS STEEL TUBE 14\"/>				
15	STAINLESS STEEL TUBE 15\"/>				
16	STAINLESS STEEL TUBE 16\"/>				
17	STAINLESS STEEL TUBE 17\"/>				
18	STAINLESS STEEL TUBE 18\"/>				
19	STAINLESS STEEL TUBE 19\"/>				
20	STAINLESS STEEL TUBE 20\"/>				
21	STAINLESS STEEL TUBE 21\"/>				
22	STAINLESS STEEL TUBE 22\"/>				
23	STAINLESS STEEL TUBE 23\"/>				
24	STAINLESS STEEL TUBE 24\"/>				

FABRICATION DRAWING NO. 10-13
 SHELVILLE RECREATION CENTER
 SHELVILLE, OHIO
 CONTRACTOR: BUSTLER
 PADDOCK CONSULTING CO.
 PADDOCK CONSULTING CO.
 1000 N. 10th St.
 Sheville, Ohio 43081

Indoor Pool 3490-1



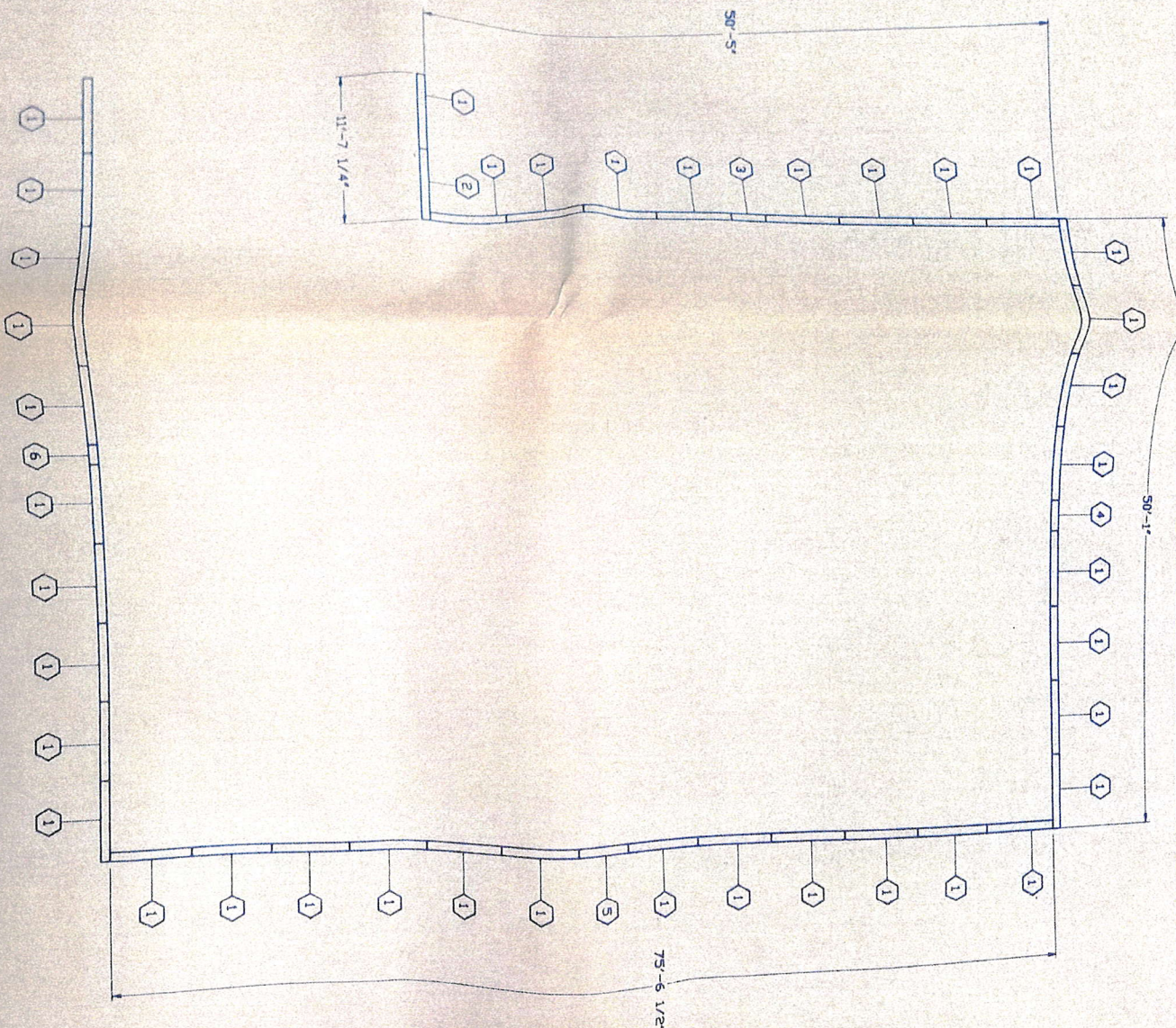
Outdoor A



Outdoor B

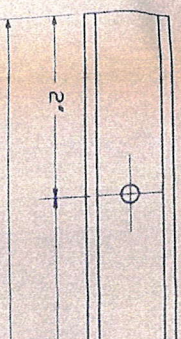


Outdoor S



GUTTER GRATE			
SECTION NO.	QTY.	RECD.	LEN.
1	39		71
2	1		70
3	1		
4	1		31
5	1		5
6	1		19

(44) SECTIONS R
 ○ - REPRESENTS



FAN RIB
 3313

TYPE 'A' PVC BAR GRATE

3/16" ST. ST. LOCKWASHER

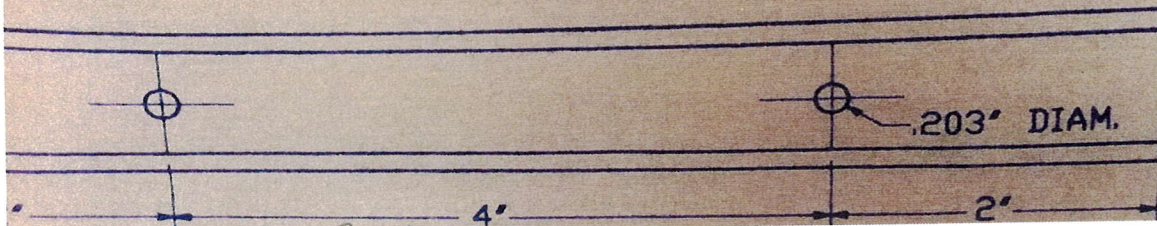
Outdoor Pool 3700-7B

GUTTER GRATE SECTION SCHEDULE

SECTION NO.	QTY. REQ'D	'L' LENGTH	'X' RIBS REQ'D	TYPE
POOL GRATING				
1	39	71 5/16"	79	FIXED
2	1	70 7/16"	78	ADJ.
3	1	36"	40	ADJ.
4	1	31 7/16"	35	ADJ.
5	1	51 3/8"	57	ADJ.
6	1	19 11/16"	22	ADJ.

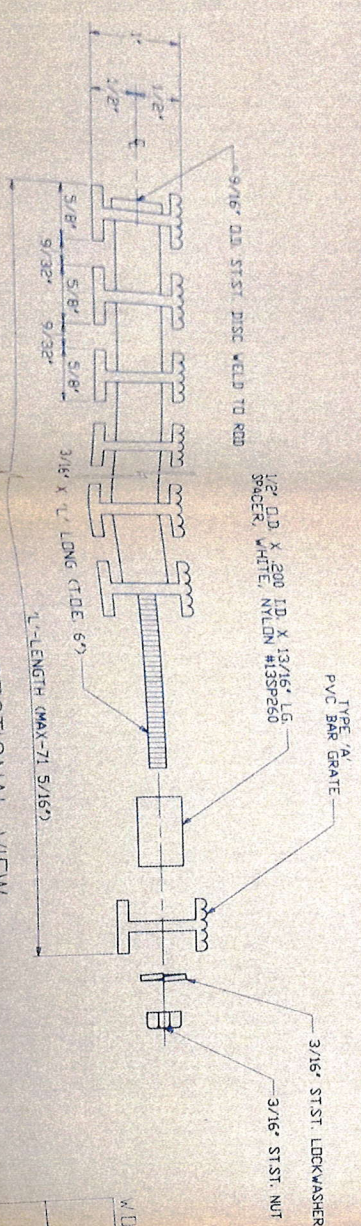
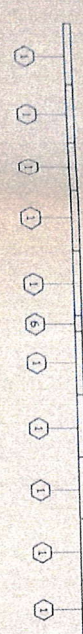
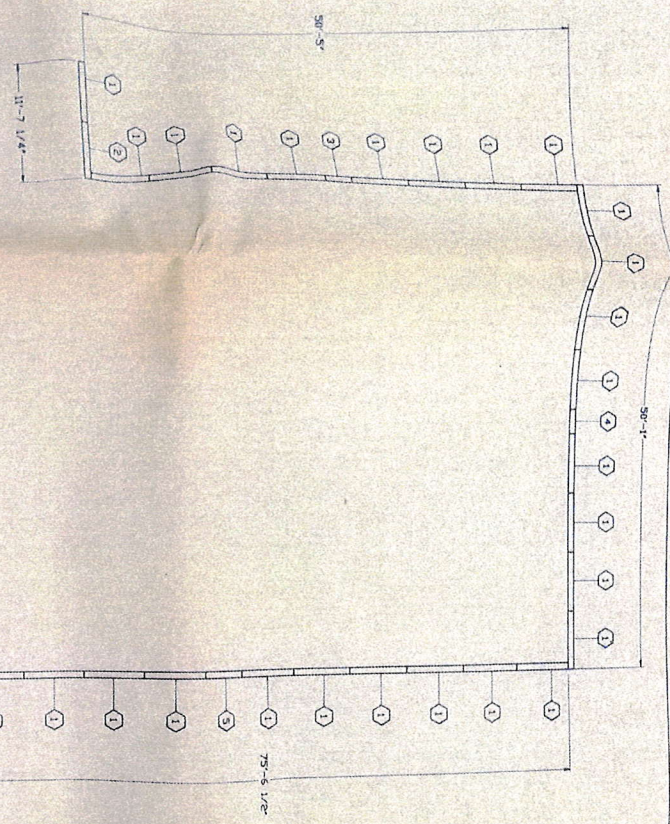
(44) SECTIONS REQ'D FOR POOL

⬡ — REPRESENTS GRATE SECTIONS



Outdoor Pool 3700-7C

SEE
 5. Eating Out with Friends at Yamatos
 6. Birthday & Binge
 7. Meeting with Mike
 8. Meeting with Mike
 9. Meeting with Mike
 10. Meeting with Mike
 11. Meeting with Mike
 12. Meeting with Mike
 13. Meeting with Mike
 14. Meeting with Mike
 15. Meeting with Mike
 16. Meeting with Mike
 17. Meeting with Mike
 18. Meeting with Mike
 19. Meeting with Mike
 20. Meeting with Mike
 21. Meeting with Mike
 22. Meeting with Mike
 23. Meeting with Mike
 24. Meeting with Mike
 25. Meeting with Mike
 26. Meeting with Mike
 27. Meeting with Mike
 28. Meeting with Mike
 29. Meeting with Mike
 30. Meeting with Mike
 31. Meeting with Mike
 32. Meeting with Mike
 33. Meeting with Mike
 34. Meeting with Mike
 35. Meeting with Mike
 36. Meeting with Mike
 37. Meeting with Mike
 38. Meeting with Mike
 39. Meeting with Mike
 40. Meeting with Mike
 41. Meeting with Mike
 42. Meeting with Mike
 43. Meeting with Mike
 44. Meeting with Mike
 45. Meeting with Mike
 46. Meeting with Mike
 47. Meeting with Mike
 48. Meeting with Mike
 49. Meeting with Mike
 50. Meeting with Mike
 51. Meeting with Mike
 52. Meeting with Mike
 53. Meeting with Mike
 54. Meeting with Mike
 55. Meeting with Mike
 56. Meeting with Mike
 57. Meeting with Mike
 58. Meeting with Mike
 59. Meeting with Mike
 60. Meeting with Mike
 61. Meeting with Mike
 62. Meeting with Mike
 63. Meeting with Mike
 64. Meeting with Mike
 65. Meeting with Mike
 66. Meeting with Mike
 67. Meeting with Mike
 68. Meeting with Mike
 69. Meeting with Mike
 70. Meeting with Mike
 71. Meeting with Mike
 72. Meeting with Mike
 73. Meeting with Mike
 74. Meeting with Mike
 75. Meeting with Mike
 76. Meeting with Mike
 77. Meeting with Mike
 78. Meeting with Mike
 79. Meeting with Mike
 80. Meeting with Mike
 81. Meeting with Mike
 82. Meeting with Mike
 83. Meeting with Mike
 84. Meeting with Mike
 85. Meeting with Mike
 86. Meeting with Mike
 87. Meeting with Mike
 88. Meeting with Mike
 89. Meeting with Mike
 90. Meeting with Mike
 91. Meeting with Mike
 92. Meeting with Mike
 93. Meeting with Mike
 94. Meeting with Mike
 95. Meeting with Mike
 96. Meeting with Mike
 97. Meeting with Mike
 98. Meeting with Mike
 99. Meeting with Mike
 100. Meeting with Mike

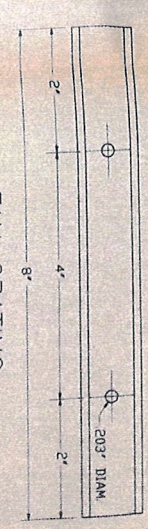


TYPE 'A' PVC BAR GRATE SECTIONAL VIEW

GUTTER GRATE SECTION SCHEDULE

SECTION NO.	REQ'D QTY	LENGTH	RIBS REQ'D	TYPE
1	39	71 5/16"	79	FIXED
2	1	70 7/16"	76	ADJ.
3	1	36"	40	ADJ.
4	1	31 7/16"	35	ADJ.
5	1	51 3/8"	57	ADJ.
6	1	19 11/16"	22	ADJ.

(44) SECTIONS REQ'D FOR POOL
 ○ REPRESENTS GRATE SECTIONS



FAN GRATING RIB SIDE VIEW
 3313 RIBS REQ'D

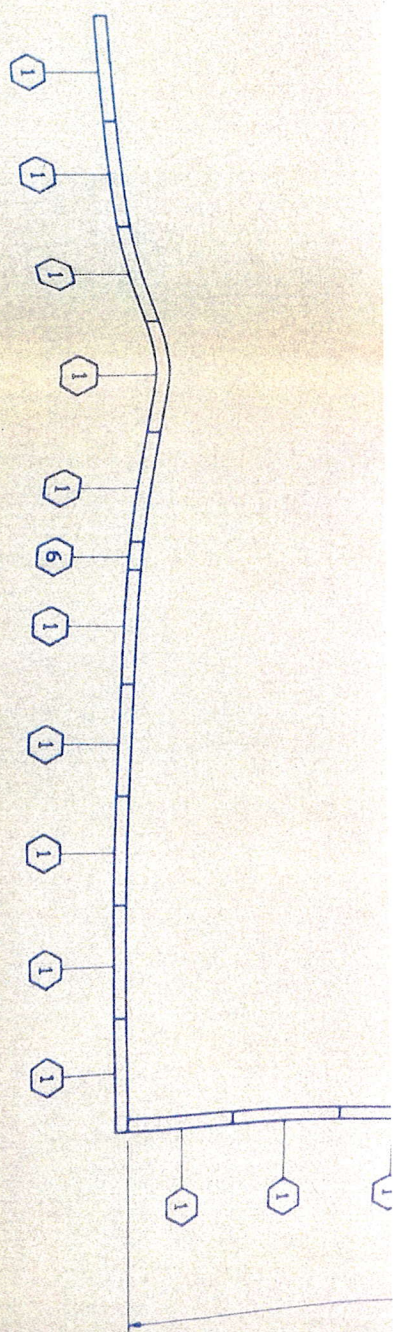


W.D.# P-15607
 GRIFFIN PARK
 SHELBYVILLE, TN
 TYPE 'A' PVC BAR GRATE
 LAYOUT & DETAIL
 PADDOCK POOL EQUIPMENT CO. INC.
 ROCK HILL, S.C. 29730

DATE: 4-2-97
 DRAWING NO: 3700-7

DESIGNED BY: NW
 DRAWN BY: NW

Outdoor Pool 3700-7

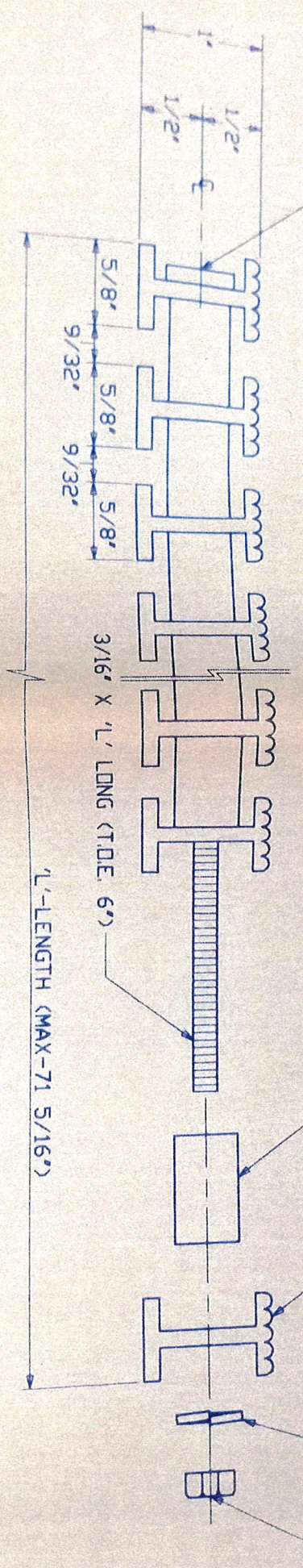


9/16" O.D. ST. ST. DISC WELD TO ROD

1/2" O.D. X .200 I.D. X 13/16" L.G. SPACER, WHITE, NYLON #13SP260

TYPE 'A' PVC BAR GRATE

3/16"



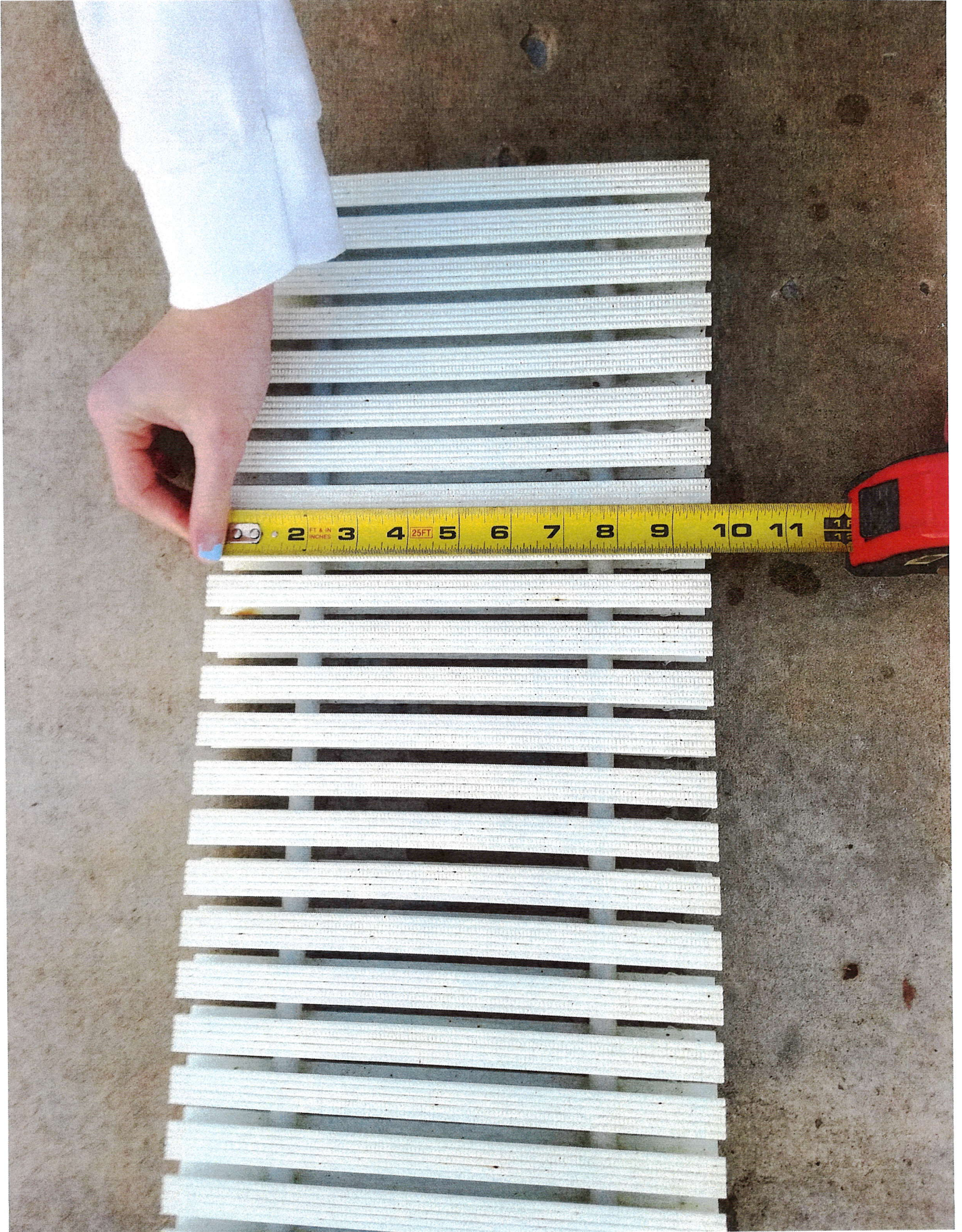
TYPE 'A' PVC BAR GRATE SECTIONAL VIEW

1" LENGTH (MAX-71 5/16")

3/16" X 1" LONG (T.O.D. 6")



Zero Entry A



Zero Entry B