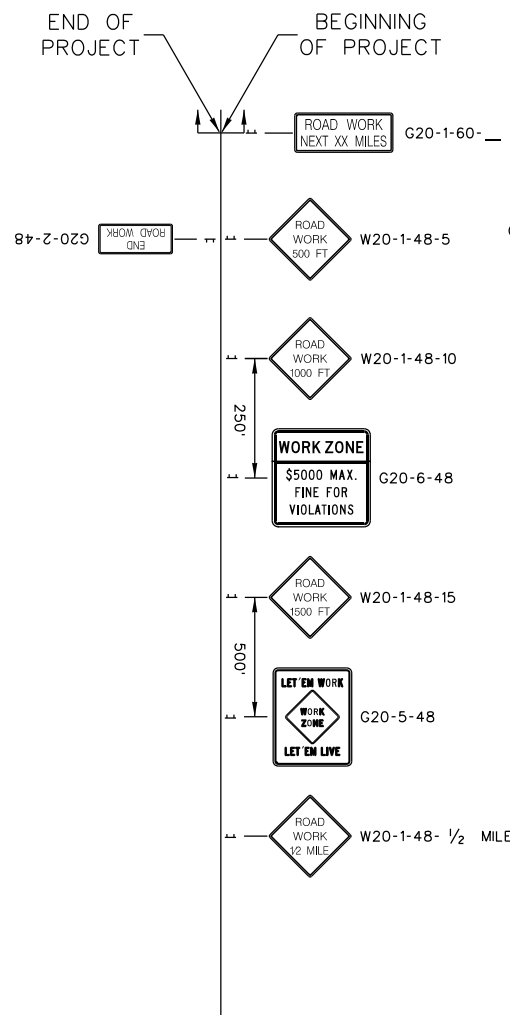




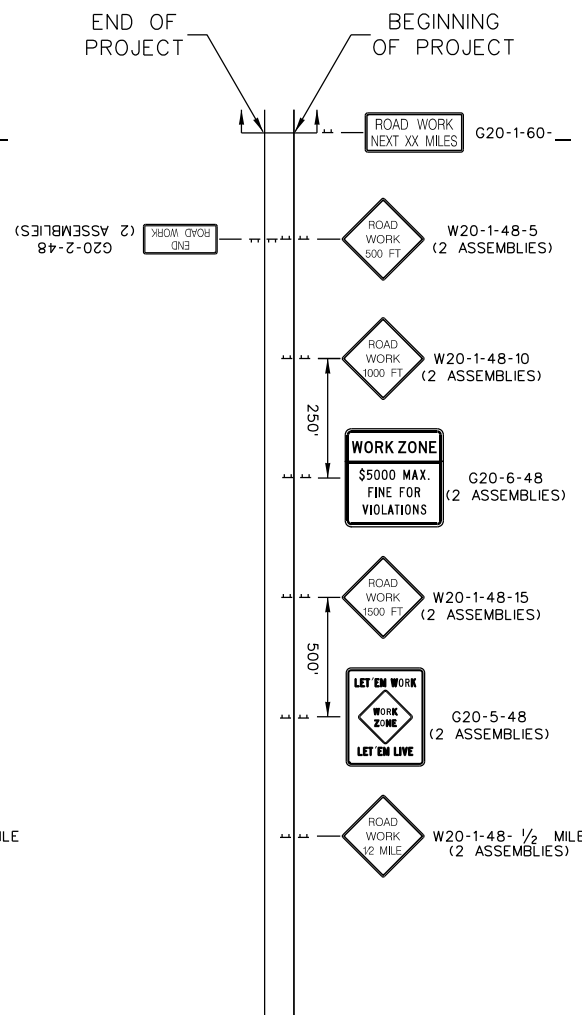
REFERENCES

SCHEME A



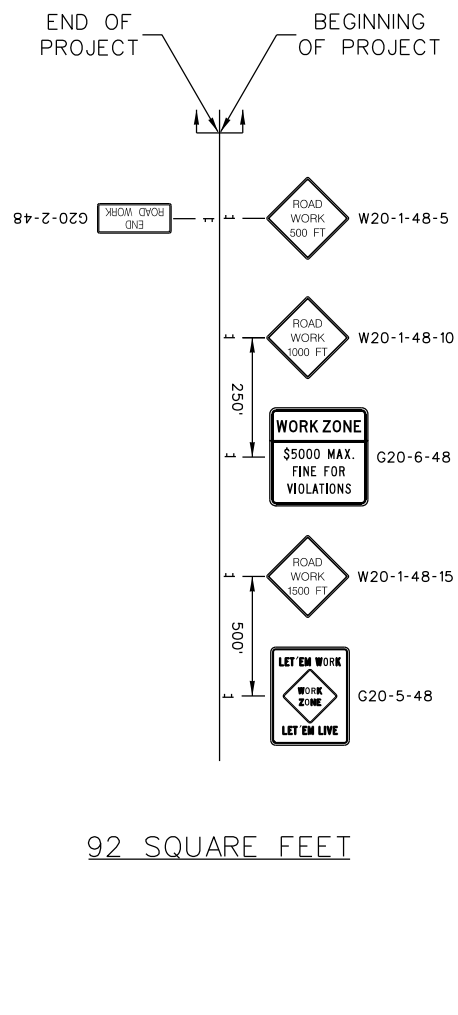
118 SQUARE FEET

SCHEME B



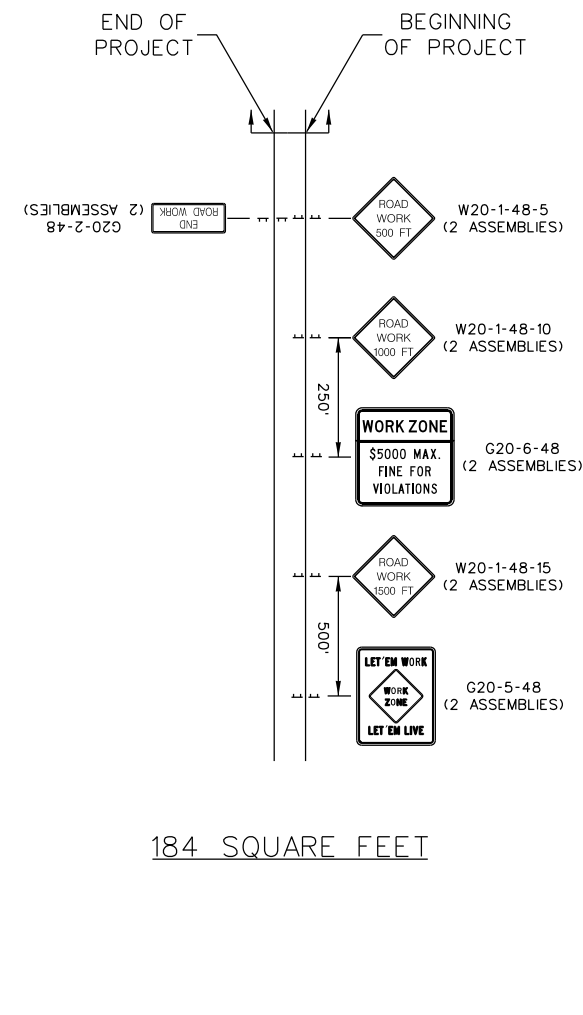
226 SQUARE FEET

SCHEME C



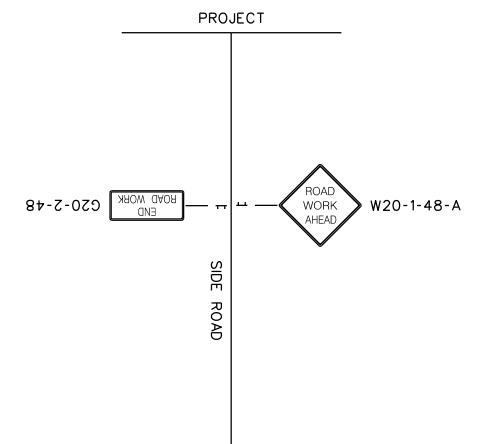
92 SQUARE FEET

SCHEME D



184 SQUARE FEET

SCHEME E



24 SQUARE FEET

WORK ZONE TRAFFIC CONTROL ENGINEER



6			
5			
4			
3	8-23-22	TED	UPDATE LAYOUTS
2	5-3-18	WEM	UPDATE TITLE & SIGNS
1	1-9-12	JCS	GENERAL UPDATE
0	8-13-07	JCS	DRAWING NO. UPDATE
#	DATE	CHK	DESCRIPTION



STANDARD DRAWING

CONSTRUCTION SIGNING PERMANENT WORK ZONE \$5000 FINE PRIMARY ROUTES

605-010-01

EFFECTIVE LETTING DATE | JAN 2023

THIS DRAWING IS NOT TO SCALE

GENERAL NOTES

1. ALL SIGN LOCATIONS ARE TO BE MEASURED FROM THE WORK AREA. THE WORK LIMITS FOR THE PROJECT WILL BE DETERMINED BY THE ENGINEER AND AS INDICATED IN THE CONTRACT.
2. INSTALL ALL PERMANENT CONSTRUCTION SIGNS ON APPROVED GROUND MOUNTED SIGN POSTS UNLESS OTHERWISE DIRECTED BY THE DEPARTMENT. UTILIZE EITHER 3 PPF U-CHANNEL OR SQUARE STEEL TUBE POSTS FOR THESE INSTALLATIONS. INSTALL EACH PERMANENT CONSTRUCTION SIGN ASSEMBLY NO LESS THAN 2 FEET FROM THE NEAR EDGE OF A PAVED SHOULDER OR THE FACE OF A CURB OR 6-12 FEET FROM THE NEAR EDGE OF AN ADJACENT TRAVEL LANE WITHOUT THE PRESENCE OF A PAVED SHOULDER OR A CURB & GUTTER TO THE NEAREST EDGE OF THE SIGN ASSEMBLY. ALSO, MOUNT EACH PERMANENT CONSTRUCTION SIGN ASSEMBLY TO PROVIDE A MOUNTING HEIGHT OF NO LESS THAN 7 FEET OR NO GREATER THAN 8 FEET FROM THE BOTTOM EDGE OF THE PRIMARY SIGN TO THE GRADE ELEVATION OF THE NEAR EDGE OF THE ADJACENT TRAVEL LANE. HOWEVER, IF A SECONDARY SIGN IS MOUNTED BELOW THE PRIMARY SIGN, MOUNT THE SIGN ASSEMBLY TO PROVIDE A MOUNTING HEIGHT OF NO LESS THAN 6 FEET FROM THE BOTTOM EDGE OF THE SECONDARY SIGN TO THE GRADE ELEVATION OF THE NEAR EDGE OF THE ADJACENT TRAVEL LANE. PROVIDE AND UTILIZE SPECIAL SIGN MOUNTING DEVICES AND HARDWARE AS NECESSARY FOR INSTALLING PERMANENT CONSTRUCTION SIGN ASSEMBLIES IN AREAS WHERE CONCRETE MEDIAN BARRIER WALLS, BRIDGE PARAPET WALLS OR DOUBLEFACED GUARDRAIL ARE PRESENT.
3. MOUNT ALL FLAT SHEET PERMANENT CONSTRUCTION SIGNS STRAIGHT AND LEVEL AND WITH THE FACE OF THE SIGNS PERPENDICULAR TO THE SURFACE OF THE ROADWAY.
4. REFLECTORIZE ALL ORANGE PERMANENT CONSTRUCTION SIGNS AND ANY ORANGE AREAS OF MULTICOLORED PERMANENT CONSTRUCTION SIGNS WITH A FLUORESCENT ORANGE COLORED PRISMATIC RETROREFLECTIVE SHEETING. REFLECTORIZE ALL WHITE PERMANENT CONSTRUCTION SIGNS AND ANY WHITE AREAS OF MULTICOLORED PERMANENT CONSTRUCTION SIGNS WITH A WHITE COLORED PRISMATIC RETROREFLECTIVE SHEETING.
5. SPACINGS INDICATED ARE FOR NORMAL CONDITIONS; ADJUSTMENTS MAY BE REQUIRED DUE TO HORIZONTAL AND/OR VERTICAL ALIGNMENTS OR OTHER SIGHT DISTANCE RESTRICTIONS.
6. ALL TRAFFIC CONTROL DEVICES SHALL REQUIRE APPROVAL BY THE DEPARTMENT. ONLY THOSE TRAFFIC CONTROL DEVICES INCLUDED ON THE "APPROVED PRODUCTS LIST FOR TRAFFIC CONTROL DEVICES IN WORK ZONES" ARE CONSIDERED ACCEPTABLE FOR USE. THIS LIST MAY BE ACCESSED ON THE DEPARTMENT'S WEB SITE AT: [www.scdot.org](http://www.scdot.org).
7. THE DEPARTMENT RESERVES THE RIGHT TO RESTRICT WORK OPERATIONS AND/OR WITHHOLD THE MONTHLY ESTIMATE IF THE TRAFFIC CONTROL IS NOT PROPERLY INSTALLED AND MAINTAINED AS DIRECTED BY THE STANDARD SPECIFICATIONS, THE SPECIAL PROVISIONS, THE STANDARD DRAWINGS, THE PLANS AND/OR THE ENGINEER.
8. WHEN WORK IS INACTIVE FOR 3 OR MORE CONSECUTIVE DAYS, COVER THE "WORK ZONE \$5000 MAX FINE" SIGN (G20-6-48) WITH AN OPAQUE MATERIAL IN ACCORDANCE WITH THE APPROVED METHODS FOR COVERING SIGNS AS SPECIFIED IN THE SPECIFICATIONS.