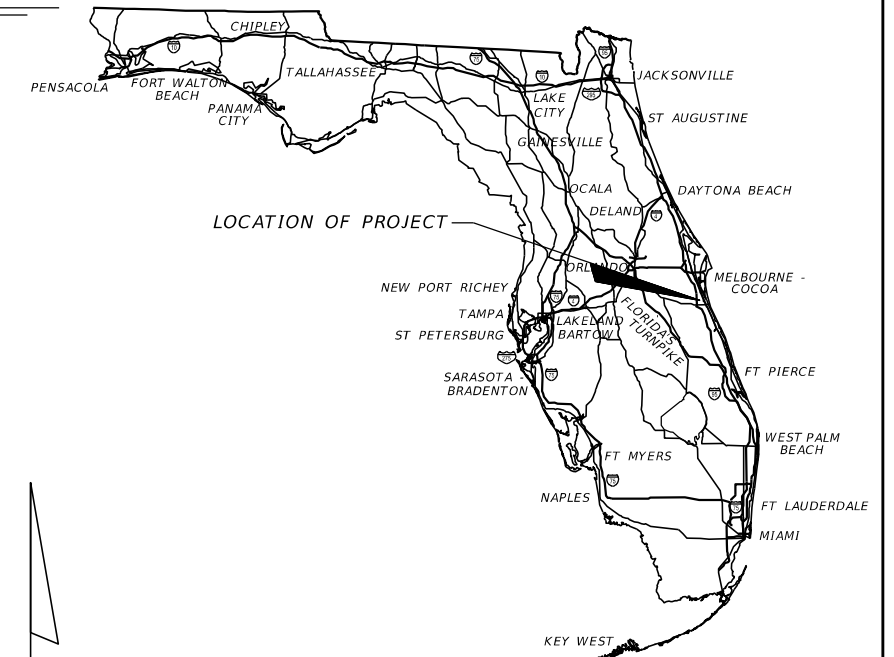


SAINT JOHNS RIVER WATER MANAGEMENT DISTRICT

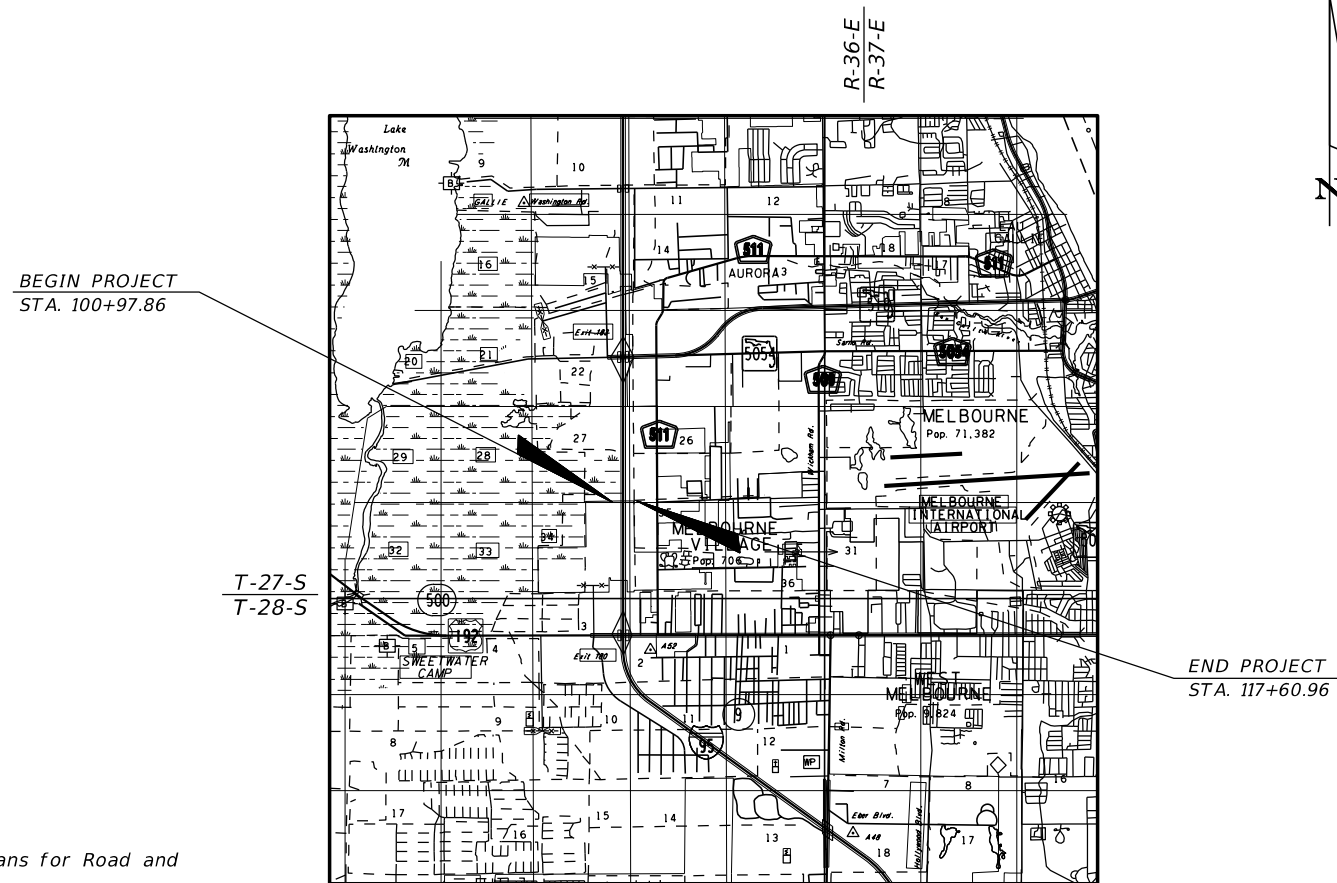
UTILITY PLANS

CRANE CREEK M-1 CANAL
FLOW RESTORATION



INDEX OF UTILITY PLANS

SHEET NO.	SHEET DESCRIPTION
C2-1	KEY SHEET
C2-2	GENERAL NOTES
C2-3 - C2-6	UTILITY PLAN
C2-7 - C2-10	UTILITY PROFILE
C2-11	SUMMARY OF VERIFIED UTILITIES



UTILITY PLANS

ENGINEER OF RECORD:

CLINTON C. SMITH, P.E. NO. 67711
HANSON PROFESSIONAL SERVICES INC.
8075 GATE PARKWAY WEST, SUITE 204
JACKSONVILLE, FL 32216-3685
(904) 737-0090

GOVERNING STANDARD PLANS:

Florida Department of Transportation, FY2019-20 Standard Plans for Road and Bridge Construction and applicable Interim Revisions (IRs).

Standard Plans for Road Construction and associated IRs are available at the following website: <http://www.fdot.gov/design/standardplans>

APPLICABLE IRs:

Standard Plans for Bridge Construction are included in the Structures Plans Component

GOVERNING STANDARD SPECIFICATIONS:

Florida Department of Transportation, July 2020 Standard Specifications for Road and Bridge Construction at the following website: <http://www.fdot.gov/programmanagement/Implemented/SpecBooks>

July 2017 FDOT Utility Accommodation Manual

BID DOCUMENTS

SHEET NO.

C2-1

NOTICE: THE OFFICIAL RECORD OF THIS SHEET IS THE ELECTRONIC FILE DIGITALLY SIGNED AND SEALED UNDER RULE 61G15-23.004, F.A.C.

GENERAL NOTES

1. BENCHMARK ELEVATIONS SHOWN ON THE PLANS ARE NORTH AMERICAN VERTICAL DATUM OF 1988 (NAVD 88).
2. THE LOCATION(S) OF THE UTILITIES SHOWN IN THE PLANS (INCLUDING THOSE DESIGNATED Vv, Vh, AND Vvh) ARE BASED ON LIMITED INVESTIGATION TECHNIQUES AND SHOULD BE CONSIDERED APPROXIMATE ONLY. THE VERIFIED LOCATIONS/ELEVATIONS APPLY ONLY AT THE POINTS SHOWN. INTERPOLATIONS BETWEEN THESE POINTS HAVE NOT BEEN VERIFIED.
3. UTILITY/AGENCY OWNERS:

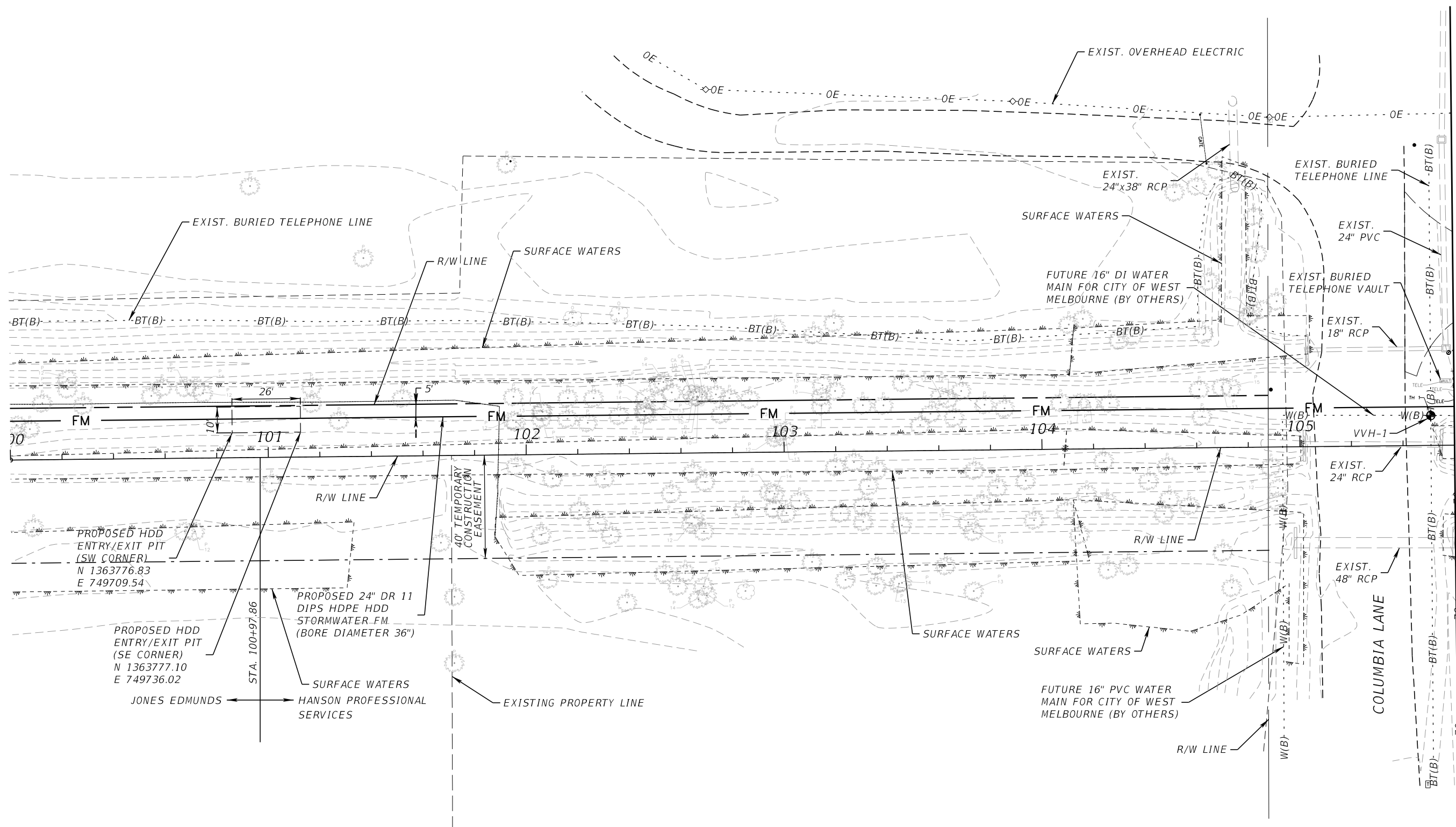
<u>COMPANY</u>	<u>TELEPHONE NUMBER</u>
BREVARD COUNTY PUBLIC WORKS - TRAFFIC SIGNALS & FIBER	(321) 633-2077
FLORIDA CITY GAS - GAS	(321) 638-3424
FLA GAS TRANS. - MELBOURNE - GAS PIPELINE	(407) 838-7171
FLORIDA POWER & LIGHT - BREVARD - ELECTRIC	(386) 586-6403
LEVEL 3 COMMUNICATIONS - FIBER OPTIC	(877) 366-8344 x2
CITY OF MELBOURNE UTILITIES ADMINISTRATION - WATER DISTRIBUTION	(321) 608-5106
CITY OF MELBOURNE UTILITIES ADMINISTRATION - WASTEWATER RE-USE	(321) 608-5106
CITY OF MELBOURNE UTILITIES ADMINISTRATION - SEWAGE COLLECTION	(321) 608-5106
CENTURYLINK (FORMERLY QWEST COMMUNICATIONS) - FIBER OPTIC	(303) 992-9931
AT&T DISTRIBUTION - TELEPHONE	(561) 997-0240
UNITI FIBER LLC - FIBER OPTIC	(251) 259-0807
BRIGHT HOUSE NETWORKS, LLC BREVARD - FIBER OPTIC	(321) 757-6451
CITY OF WEST MELBOURNE - WATER	(321) 837-7771
CITY OF WEST MELBOURNE - SEWER	(321) 984-0485
CROWN CASTLE FIBER	(786) 610-7059

4. SPECIAL EVENT DAYS FOR THIS PROJECT INCLUDE: TBD
5. NO ACCESS WILL BE ALLOWED (PARKING, ETC.) IN LAROW.
6. ITS LINES IN AREA - MUST CONTACT D5 DISTRICT TRAFFIC OPERATIONS - JIM MILLER AT 386-943-5322 FOR ITS INFORMATION. CONTRACTOR IS RESPONSIBLE TO NOTIFY FDOT IMMEDIATELY IF ITS IS COMPROMISED.

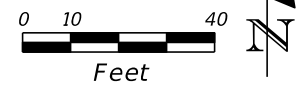
ENVIRONMENTAL RESOURCE REQUIREMENTS

1. THE USE OF DRILLING FLUIDS SHALL NOT CAUSE OR CONTRIBUTE TO A VIOLATION OF STATE GROUND WATER QUALITY CRITERIA OR STANDARDS, AS DEFINED IN CHAPTER 62-520, F.A.C.
2. AT LEAST 48 HOURS PRIOR TO COMMENCEMENT OF ANY DIRECTIONAL DRILLING ACTIVITIES, CONTRACTOR SHALL PROVIDE ALL-HOURS TELEPHONE CONTACT INFORMATION OF ALL CONTRACTORS RESPONSIBLE FOR DRILLING AND FOR CONTAINMENT AND CLEANUP IN THE EVENT OF A DRILLING FLUID FRAC-OUT OR SPILL.
3. THE CONTRACTOR SHALL AT ALL TIMES DURING DIRECTIONAL DRILLING ACTIVITIES, MAINTAIN APPROPRIATE EQUIPMENT AND MATERIALS IN A READILY-ACCESSIBLE LOCATION AND CONDITION, TO EFFECTIVELY CONTAIN AND CLEAN UP A DRILLING FLUID FRAC-OUT OR SPILL.
4. THE CONTRACTOR SHALL AT ALL TIMES DURING DIRECTIONAL DRILLING ACTIVITIES, ENSURE THAT APPROPRIATELY-TRAINED PERSONNEL MONITOR DOWNHOLE EQUIPMENT POSITION, DRILLING FLUID CIRCULATION AND PRESSURES, AND ACTIVELY MONITOR THE ENTIRE UTILITY LINE ROUTE FOR SURFACE FRAC-OUT OF DRILLING FLUIDS.
5. ALL DRILLING ACTIVITIES SHALL BE DISCONTINUED AND THE DRILLING FLUID OR SLURRY SHALL BE CONTAINED USING APPROPRIATE METHODS AS SOON AS POSSIBLE. IN THE EVENT OF A DRILLING FLUID FRAC-OUT OR SPILL, REMOVAL OF DRILLING FLUID OR SLURRY FROM WETLANDS AND OTHER SURFACE WATERS SHALL BE INITIATED AND COMPLETED IN THE MOST EXPEDITIOUS MANNER PRACTICAL. REMOVED DRILLING FLUID SHALL BE CONTAINED OR DISPOSED OF IN AN APPROPRIATE UPLAND LOCATION. ANY FRAC-OUT OR SPILL OF DRILLING FLUID INTO WETLANDS OR OTHER SURFACE WATERS SHALL BE REPORTED TO THE FLORIDA DEPARTMENT OF ENVIRONMENTAL PROTECTION WITHIN 24 HOURS FOLLOWING DETECTION OF THE SPILL OR FRAC-OUT.
6. CONTRACTOR SHALL STABILIZE AND REPLANT ALL DISTURBED / CLEARED PORTIONS OF THE TEMPORARY CONSTRUCTION EASEMENT AREA. REPLANT AT 8-FOOT ON CENTER WITH 15-GALLON WAX MYRTLE (MYRICA CERIFERA), OR OWNER APPROVED EQUIVALENT, WITH MINIMUM PLANT HEIGHT OF 10-FEET AT THE TIME OF PLANTING.

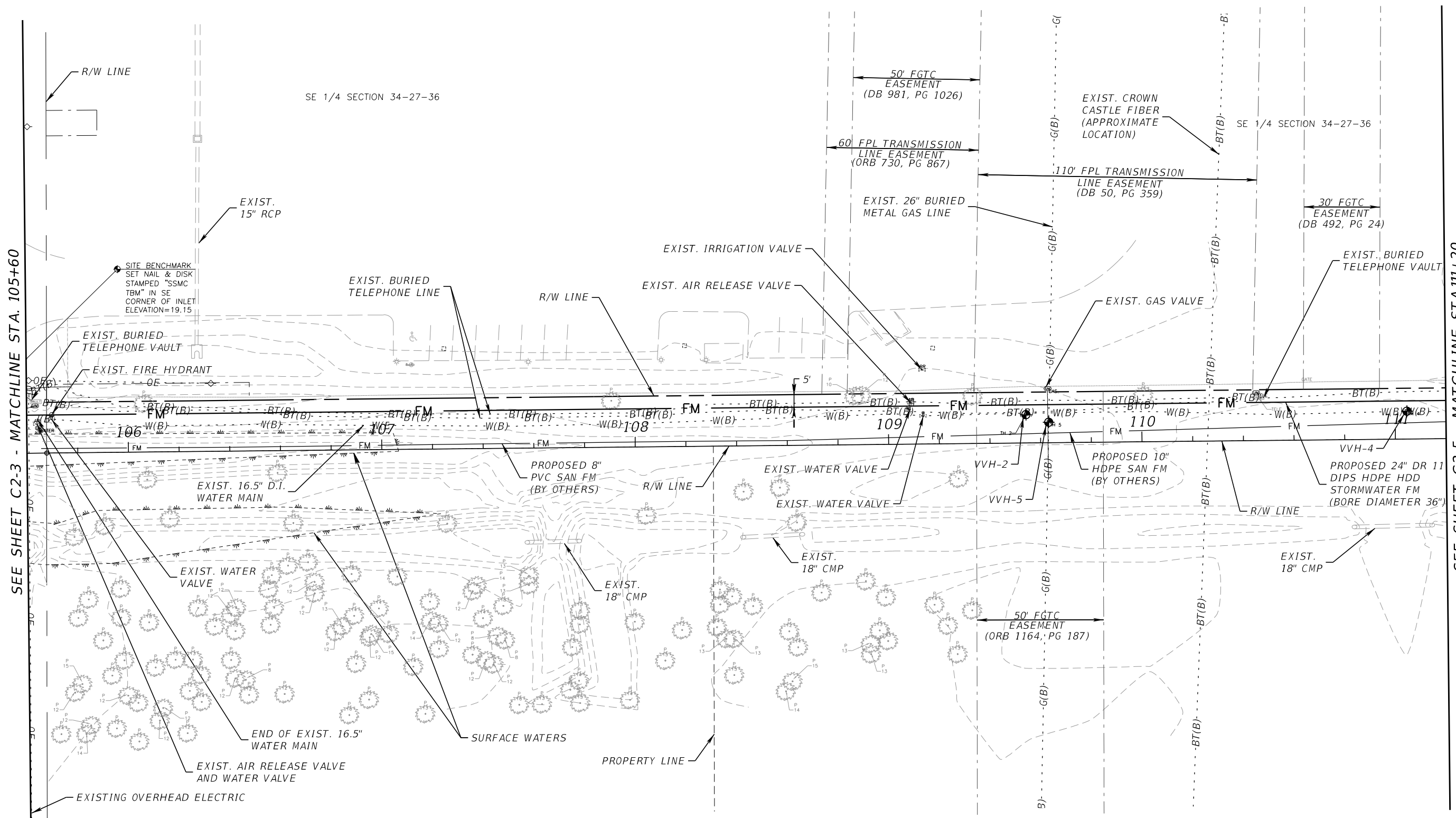
REVISIONS				CLINTON C. SMITH, P.E. P.E. LICENSE NUMBER 67711 HANSON PROFESSIONAL SERVICES INC. 8075 GATE PARKWAY WEST, SUITE 204 JACKSONVILLE, FL 32216-3685 CERTIFICATE OF AUTHORIZATION 00007961	COUNTY		GENERAL NOTES	SHEET NO.
DATE	DESCRIPTION	DATE	DESCRIPTION		BREVARD			C2-2



SEE SHEET C2-4 - MATCHLINE STA. 105+60

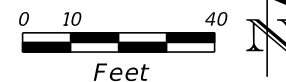


REVISIONS				CLINTON C. SMITH, P.E. P.E. LICENSE NUMBER 67711 HANSON PROFESSIONAL SERVICES INC. 8075 GATE PARKWAY WEST, SUITE 204 JACKSONVILLE, FL 32216-3685 CERTIFICATE OF AUTHORIZATION 00007961	COUNTY		UTILITY PLAN	SHEET NO. C2-3
DATE	DESCRIPTION	DATE	DESCRIPTION		BREVARD			



SEE SHEET C2-3 - MATCHLINE STA. 105+60

SEE SHEET C2-5 - MATCHLINE STA. 111+20

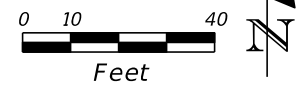
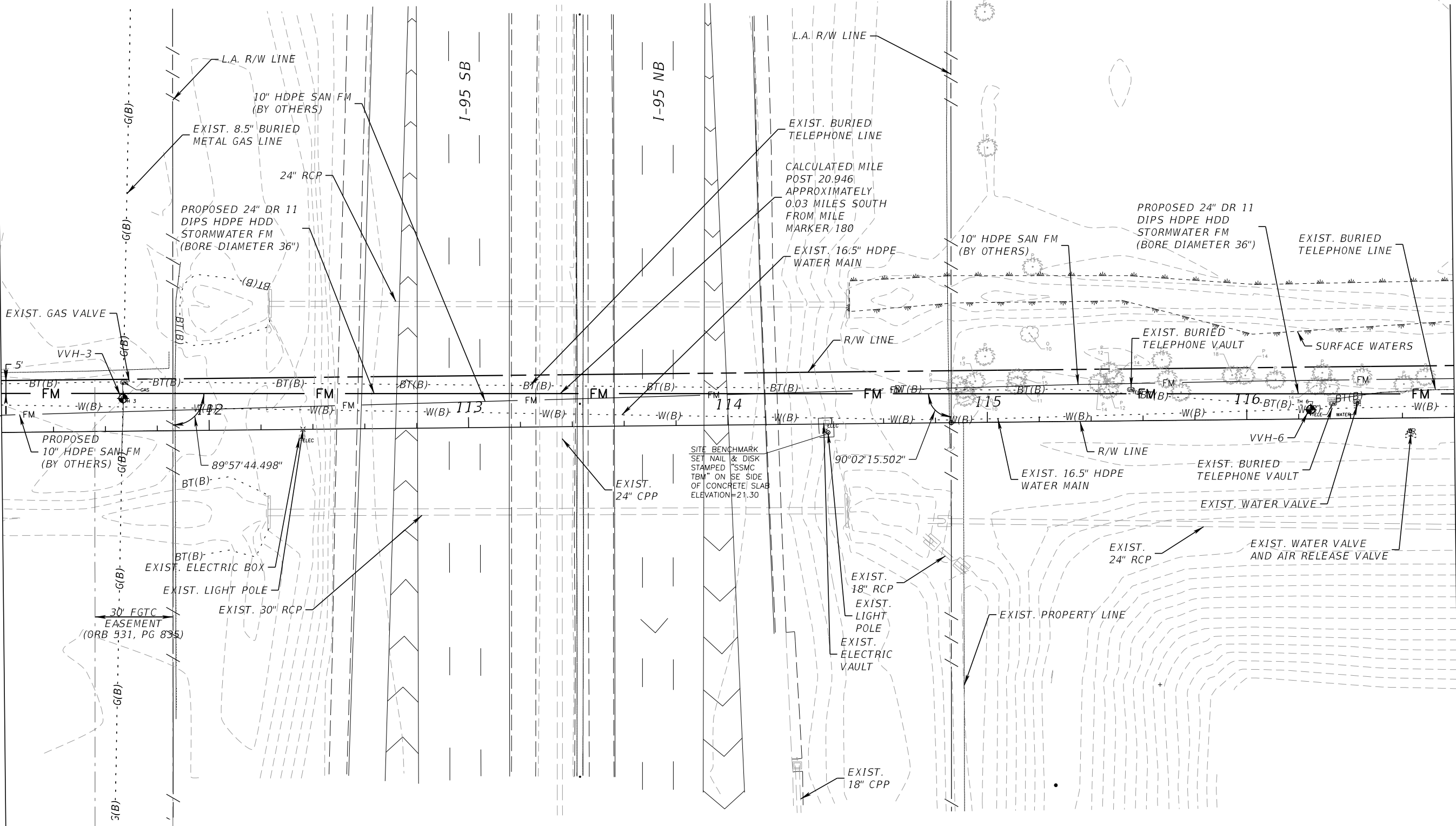


REVISIONS				CLINTON C. SMITH, P.E. P.E. LICENSE NUMBER 67711 HANSON PROFESSIONAL SERVICES INC. 8075 GATE PARKWAY WEST, SUITE 204 JACKSONVILLE, FL 32216-3685 CERTIFICATE OF AUTHORIZATION 00007961	COUNTY		SHEET NO. C2-4
DATE	DESCRIPTION	DATE	DESCRIPTION		BREVARD		
						UTILITY PLAN	

300' FDOT RIGHT-OF-WAY

SEE SHEET C2-4 - MATCHLINE STA. 111+20

SEE SHEET C2-6 - MATCHLINE STA. 116+80



REVISIONS	
DATE	DESCRIPTION

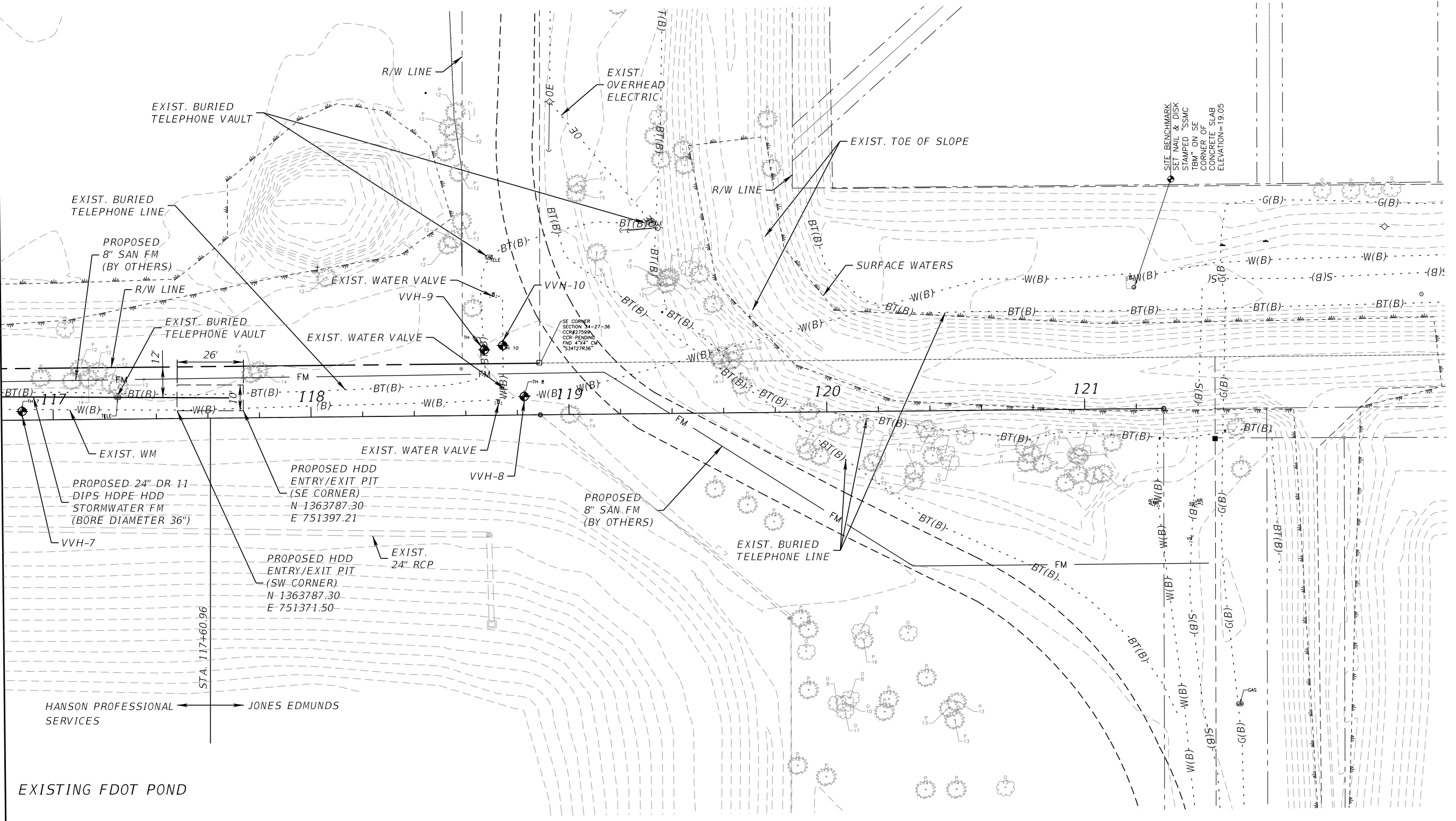
CLINTON C. SMITH, P.E.
 P.E. LICENSE NUMBER 67711
 HANSON PROFESSIONAL SERVICES INC.
 8075 GATE PARKWAY WEST, SUITE 204
 JACKSONVILLE, FL 32216-3685
 CERTIFICATE OF AUTHORIZATION 00007961

COUNTY	
BREVARD	

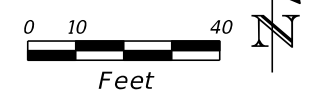
UTILITY PLAN

SHEET NO.
 C2-5

SEE SHEET C2-5 - MATCHLINE STA. 116+80



HANSON PROFESSIONAL SERVICES JONES EDMUNDS SERVICES



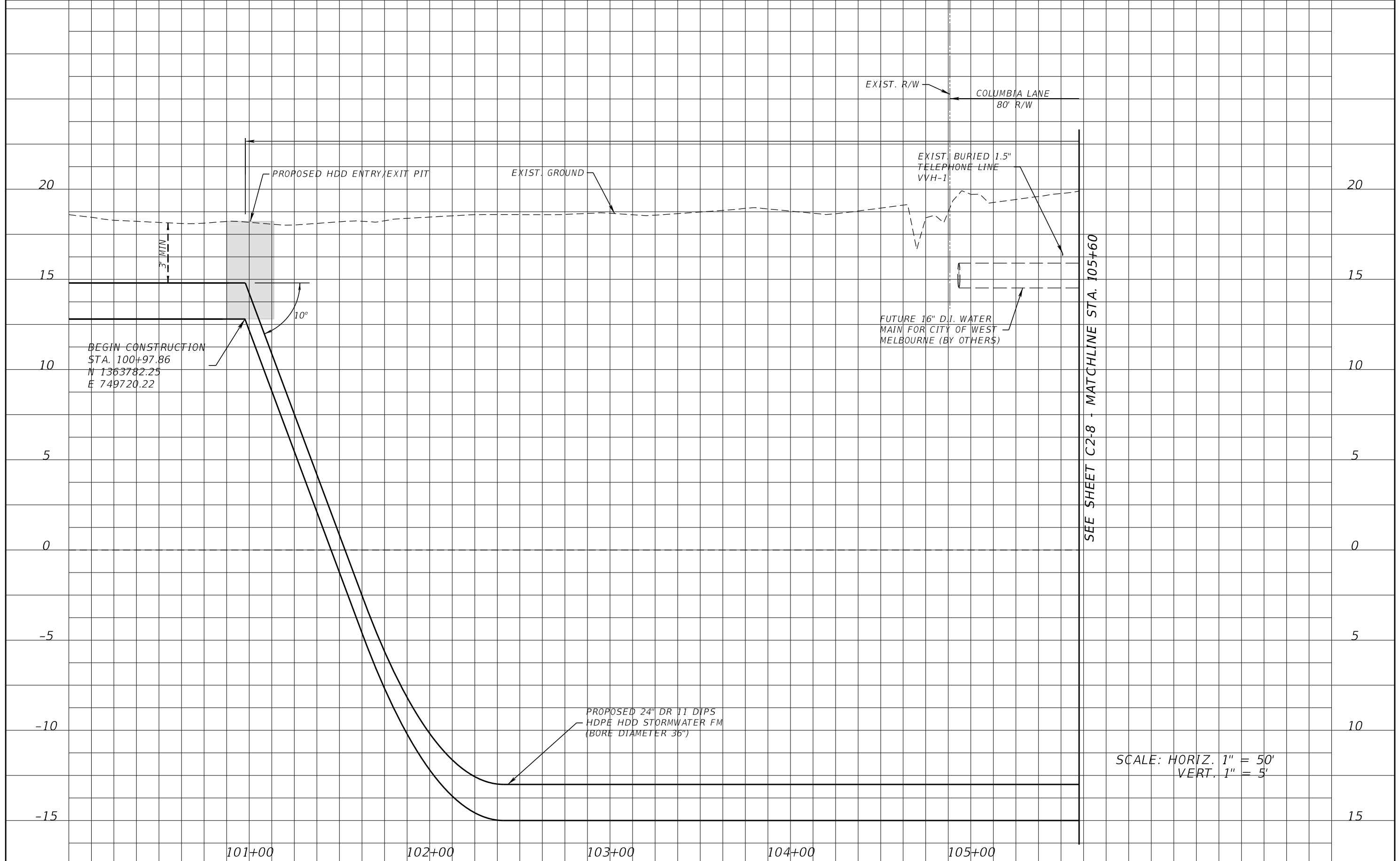
REVISIONS			
DATE	DESCRIPTION	DATE	DESCRIPTION

CLINTON C. SMITH, P.E.
P.E. LICENSE NUMBER 67711
HANSON PROFESSIONAL SERVICES INC.
8075 GATE PARKWAY WEST, SUITE 204
JACKSONVILLE, FL 32216-3685
CERTIFICATE OF AUTHORIZATION 00007961

	COUNTY	
	BREVARD	

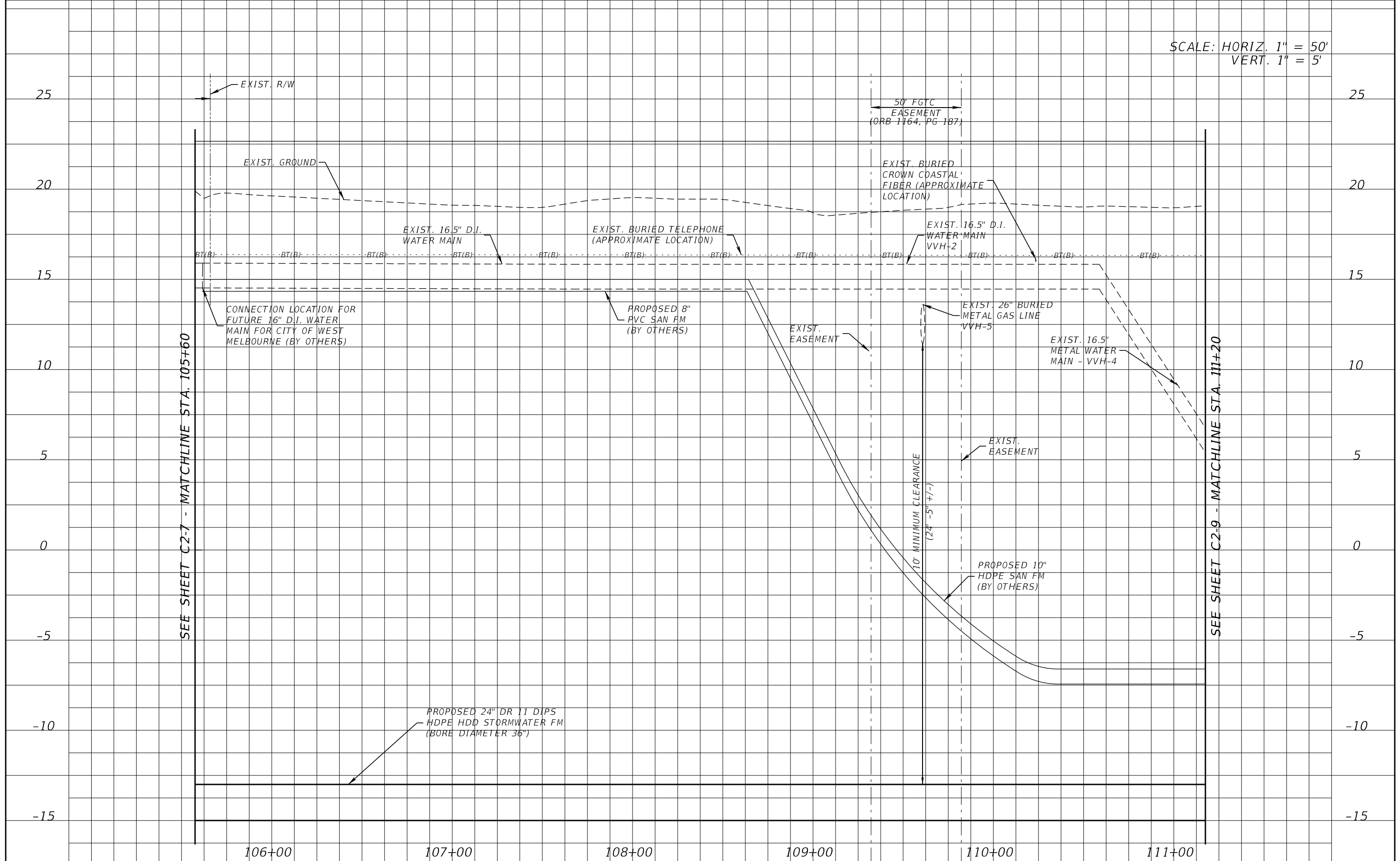
UTILITY PLAN

SHEET NO.
C2-6



DATE		DESCRIPTION		REVISIONS		CLINTON C. SMITH, P.E. P.E. LICENSE NUMBER 67711 HANSON PROFESSIONAL SERVICES INC. 8075 GATE PARKWAY WEST, SUITE 204 JACKSONVILLE, FL 32216-3685 CERTIFICATE OF AUTHORIZATION 00007961	COUNTY	BREVARD	SHEET NO.
DATE	DESCRIPTION	DATE	DESCRIPTION	DATE	DESCRIPTION				
									UTILTY PROFILES
									C2-7

SCALE: HORIZ. 1" = 50'
VERT. 1" = 5'



SEE SHEET C2-7 - MATCHLINE STA. 105+60

SEE SHEET C2-9 - MATCHLINE STA. 111+20

REVISIONS			
DATE	DESCRIPTION	DATE	DESCRIPTION

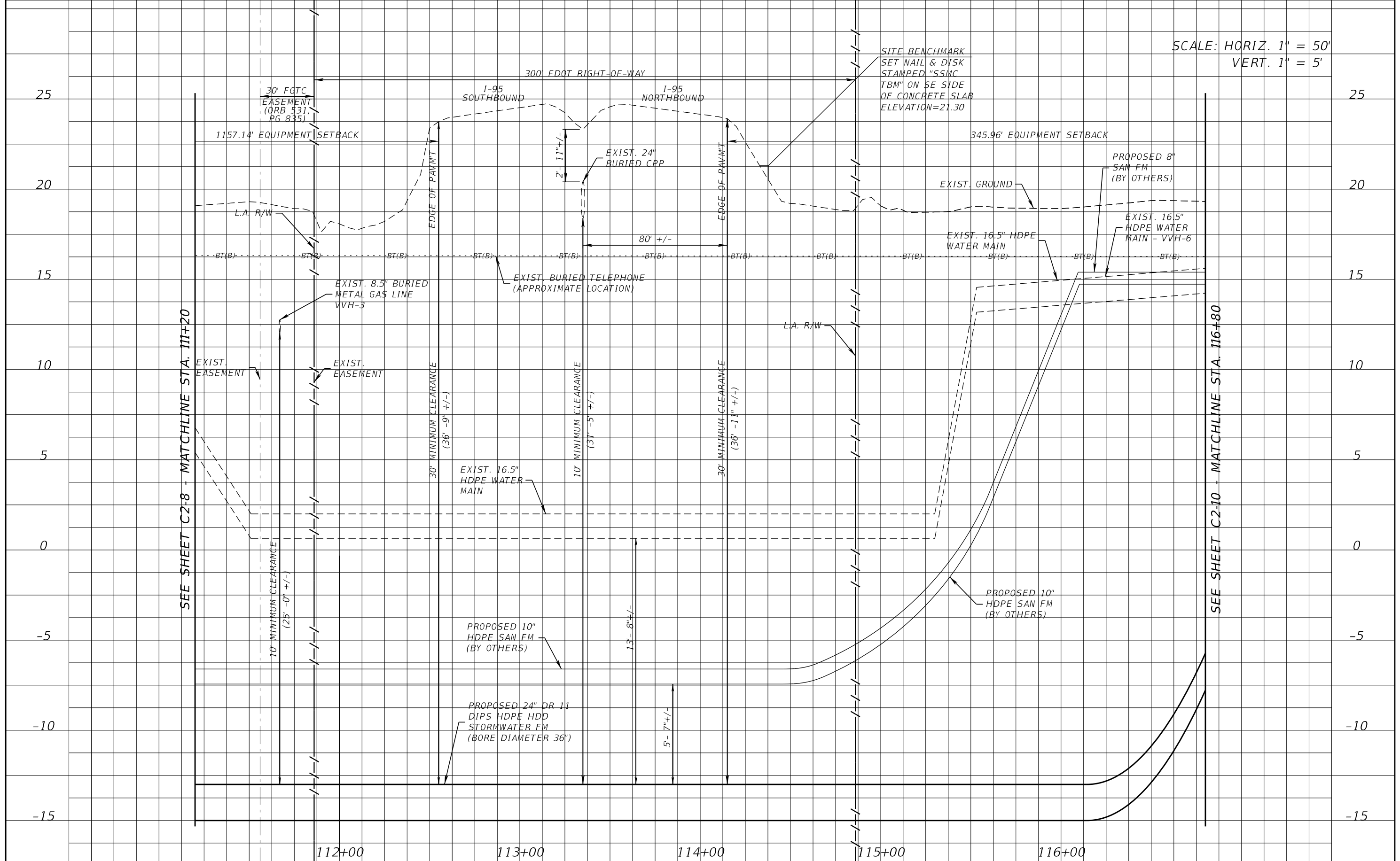
CLINTON C. SMITH, P.E.
P.E. LICENSE NUMBER 67711
HANSON PROFESSIONAL SERVICES INC.
8075 GATE PARKWAY WEST, SUITE 204
JACKSONVILLE, FL 32216-3685
CERTIFICATE OF AUTHORIZATION 00007961

	COUNTY	
	BREVARD	

UTILITY PROFILES

SHEET NO.
C2-8

SCALE: HORIZ. 1" = 50'
VERT. 1" = 5'



SEE SHEET C2-8 - MATCHLINE STA. 113+20

SEE SHEET C2-10 - MATCHLINE STA. 116+80

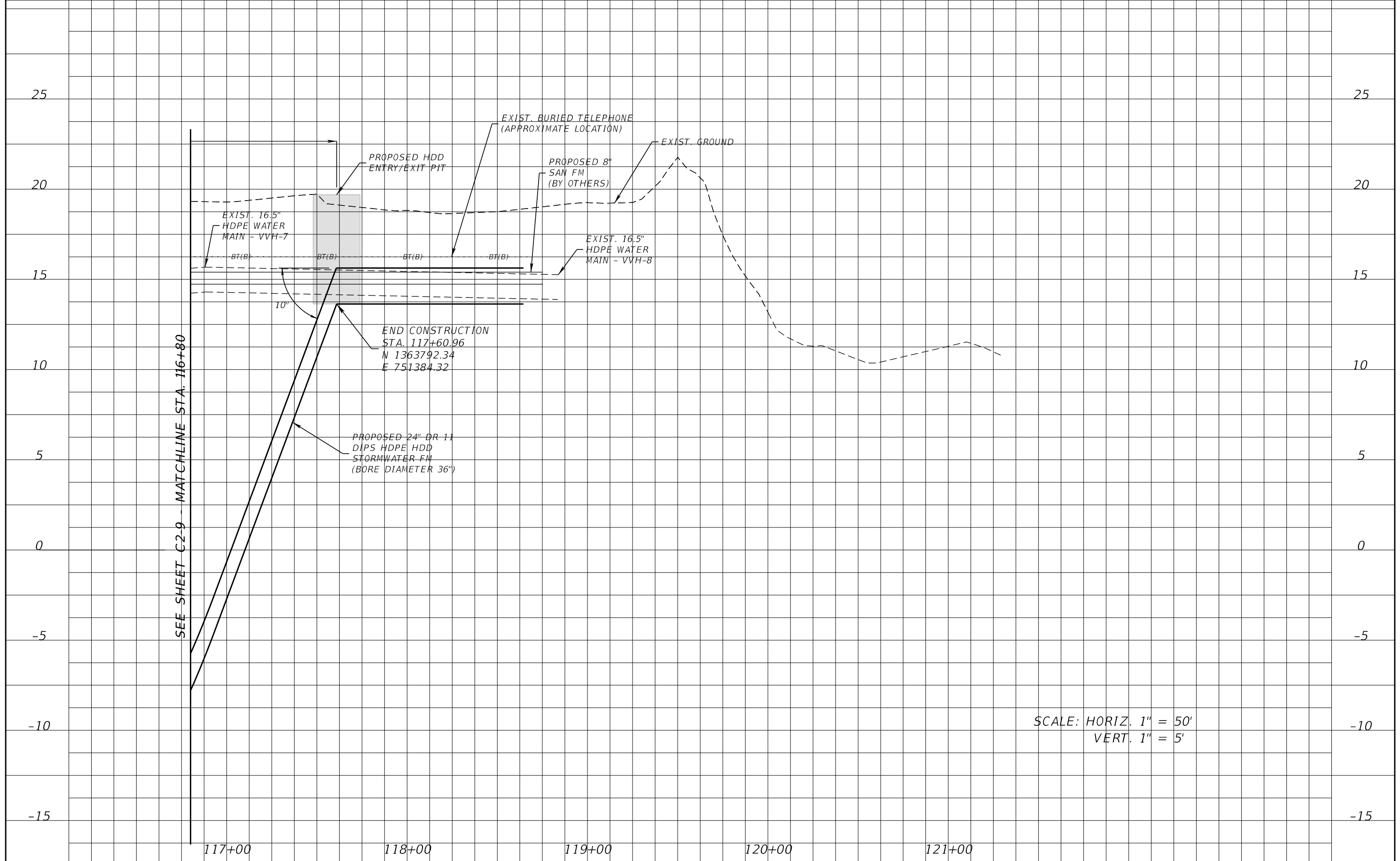
REVISIONS			
DATE	DESCRIPTION	DATE	DESCRIPTION

CLINTON C. SMITH, P.E.
P.E. LICENSE NUMBER 67711
HANSON PROFESSIONAL SERVICES INC.
8075 GATE PARKWAY WEST, SUITE 204
JACKSONVILLE, FL 32216-3685
CERTIFICATE OF AUTHORIZATION 00007961

	COUNTY	
	BREVARD	

UTILITY PROFILES

SHEET NO.
C2-9



REVISIONS				CLINTON C. SMITH, P.E. P.E. LICENSE NUMBER 67711 HANSON PROFESSIONAL SERVICES INC. 8075 GATE PARKWAY WEST, SUITE 204 JACKSONVILLE, FL 32216-3685 CERTIFICATE OF AUTHORIZATION 00007961			SHEET NO. C2-10
DATE	DESCRIPTION	DATE	DESCRIPTION		COUNTY		
					BREVARD		

SUMMARY OF VERIFIED UTILITIES

Vvh #	UTILITY DESCRIPTION (Owner, Type)	SIZE	MATERIALS	B and/or C			EXISTING GROUND ELEVATION	TOP ELEVATION	COMMENTS
				STATION	OFFSET	LT/RT			
VVH-1	BT, AT&T	1.5"	DBC	105+50.90	11.57	LT	19.69	16.44	
VVH-2	WM, BREVARD COUNTY	16.5"	DIP	109+54.36	11.15	LT	18.82	15.82	
VVH-3	GM, ENERGY TRANSFER	8.5"	MET	111+66.92	12.62	LT	19.01	12.76	
VVH-4	WM, BREVARD COUNTY	16.5"	MET	111+04.71	10.96	LT	18.88	9.13	
VVH-5	GM, ENERGY TRANSFER	26"	MET	109+63.32	8.05	LT	18.86	13.61	
VVH-6	WM, BREVARD COUNTY	16.5"	HDPE	116+24.59	3.59	LT	18.38	14.88	
VVH-7	WM, BREVARD COUNTY	16.5"	HDPE	116+88.03	3.35	LT	18.78	15.68	
VVH-8	WM, BREVARD COUNTY	16.5"	HDPE	118+83.85	7.13	LT	19.01	15.26	
VVH-9	BT, AT&T	1"	DBC	118+67.49	25.38	LT	19.00	16.25	
VVH-10	WM, BREVARD COUNTY	16.5"	HDPE	118+74.66	27.03	LT	19.02	14.87	

REVISIONS				CLINTON C. SMITH, P.E. P.E. LICENSE NUMBER 67711 HANSON PROFESSIONAL SERVICES INC. 8075 GATE PARKWAY WEST, SUITE 204 JACKSONVILLE, FL 32216-3685 CERTIFICATE OF AUTHORIZATION 00007961	COUNTY BREVARD		SUMMARY OF VERIFIED UTILITIES	SHEET NO.
DATE	DESCRIPTION	DATE	DESCRIPTION					C2-11