



City of ALAMOGORDO

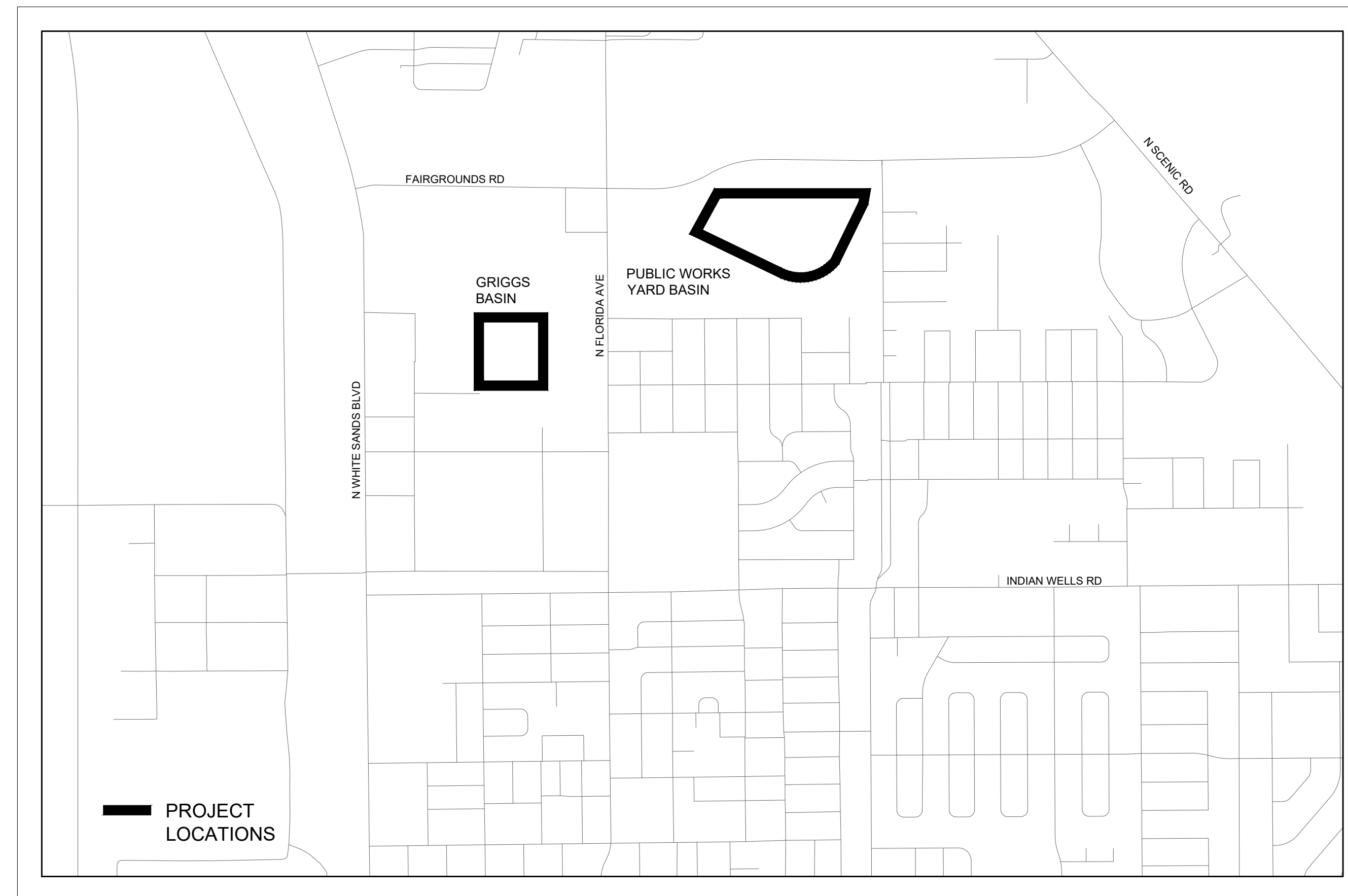
GRIGGS AND PUBLIC WORKS DRAINAGE BASINS SEDIMENT REMOVAL

CITY COMMISSION

SUSAN L. PAYNE	MAYOR
NICK PAUL	DISTRICT 1
STEPHEN BURNETT	DISTRICT 2
WARREN ROBINSON	DISTRICT 3
JOSH RARDIN	DISTRICT 4
SHARON McDONALD	DISTRICT 5, MAYOR PRO-TEM
MARK TAPLEY	DISTRICT 6

STAFF

RICK HOLDEN	CITY MANAGER
DAVID NUNNELLEY	UTILITIES DIRECTOR



VICINITY MAP
1" = 1000'

APRIL 2024



3820 Academy Parkway North NE
Albuquerque, NM 87109
505.508.0786 | fax 505.508.0837 | www.cobbfendley.com
PROJECT NUMBER : 2212-059-01

SHEET INDEX

SHEET NO.	TITLE
GENERAL SHEETS:	
1	COVER
2	GENERAL NOTES, ABBREVIATIONS, AND LEGEND
3	SURVEY CONTROL
4	CONSTRUCTION STAGING AND ACCESS MAP
5	GRIGGS BASIN EXISTING TOPOGRAPHY
6	GRIGGS BASIN GRADING PLAN
7	GRIGGS BASIN SECTIONS
8	GRIGGS BASIN CHANNEL PLAN & PROFILE
9	DRY CANYON ARROYO CHANNEL PLAN & PROFILE
10	DRY CANYON ARROYO & GRIGGS BASIN CHANNEL SECTIONS
11	PUBLIC WORKS BASIN EXISTING TOPOGRAPHY
12	PUBLIC WORKS BASIN GRADING PLAN VIEW
13	PUBLIC WORKS SECTIONS
14	TYPICAL DETAILS

SUBMITTAL LOG

NO.	DATE	DESCRIPTION
1.	12/15/2022	30% SUBMITTAL
2.	12/08/2023	60% SUBMITTAL
3.	01/29/2024	90% SUBMITTAL
4.	04/08/2024	100% SUBMITTAL



!!! WARNING !!!
 EXISTING UTILITIES IN THE AREA. CONTRACTOR SHALL FIELD VERIFY THE LOCATION OF ALL EXISTING UTILITIES WITH THE PROVIDER PRIOR TO START OF CONSTRUCTION AND SHALL IMMEDIATELY NOTIFY THE ENGINEER OF ANY CONFLICTS DISCOVERED. CONTRACTOR IS RESPONSIBLE FOR PROTECTING EXISTING UTILITIES (SHOWN OR NOT SHOWN). IF ANY EXISTING UTILITIES ARE DAMAGED, THE CONTRACTOR SHALL REPAIR THEM AT THEIR OWN EXPENSE.

ABBREVIATIONS

ASTM	AMERICAN SOCIETY FOR TESTING AND MATERIALS
BOP	BEGINNING OF PROJECT
CBC	CONCRETE BOX CULVERT
CIP	COMPLETE IN PLACE
CL	CENTERLINE
CONC.	CONCRETE
CU. FT.	CUBIC FEET
CY	CUBIC YARD
DWG	DRAWING
E	EASTING COORDINATE
ELEV	ELEVATION
EOP	END OF PROJECT
FG	FINISHED GRADE
FT	FEET
H:V	HORIZONTAL : VERTICAL
IN	INCH
INV	INVERT
LF	LINEAR FEET
MAX	MAXIMUM
MFR	MANUFACTURER
MIN	MINIMUM
N	NORTHING COORDINATE
NAD	NORTH AMERICAN DATUM
NAVD	NORTH AMERICAN VERTICAL DATUM
NIC	NOT IN CONTRACT
NMDOT	NEW MEXICO DEPARTMENT OF TRANSPORTATION
NTS	NOT TO SCALE
O.C.	ON CENTER
OFF	OFFSET
OHU	OVERHEAD UTILITY
PC	POINT OF CURVATURE
PI	POINT OF INTERSECTION
PVI	POINT OF VERTICAL INTERSECTION
R	RADIUS
RCP	REINFORCED CONCRETE PIPE
R/W	RIGHT OF WAY
S	SLOPE
SHT	SHEET
SS	SANITARY SEWER
STA	STATION
STD	STANDARD
SWPPP	STORM WATER POLLUTION PREVENTION PLAN
TBM	TEMPORARY BENCHMARK
TC	TOP OF CONCRETE
TCP	TEMPORARY CONTROL POINT
TOE	TOE OF SLOPE
TRR	TOP OF RIPRAP
TS	TOP OF SLOPE
TYP	TYPICAL
U.S.	UNITED STATES
W	WATER
W/O	WITHOUT
Z	VERTICAL ELEVATION

LEGEND

	GRADE INDICATOR DOME
	STAFF GAUGE
	FINISHED GRADE SPOT ELEVATION
	EXIST. TELECOM PEDESTAL
	EXIST. ELECTRIC METER
	EXIST. CLEAN-OUT
	EXIST. SANITARY MANHOLE
	EXIST. WATER MANHOLE (ARV)
	EXIST. BASIN DRY WELL
	EXIST. BOLLARD
	EXIST. SIGN
	EXISTING FENCELINE
	EXISTING MAJOR CONTOUR
	EXISTING MINOR CONTOUR
	PROPOSED MAJOR CONTOUR
	PROPOSED MINOR CONTOUR
	PROPOSED GRADING LIMITS
	EXISTING CONCRETE
	EXISTING RIP-RAP

GENERAL NOTES

1. THE ENGINEER IS NOT RESPONSIBLE FOR AND SHALL NOT BE LIABLE TO ANY PARTY WITH RESPECT TO DAMAGES INCURRED AS A CONSEQUENCE OF CHANGES TO ITS DESIGN THAT ARE MADE WITHOUT REVIEW AND WRITTEN APPROVAL OF THE PROFESSIONAL ENGINEER OF RECORD, WHOSE SEAL IS AFFIXED TO THESE PLANS. THE ENGINEER IS NOT RESPONSIBLE FOR CONSTRUCTION MEANS AND METHODS AND IS NOT RESPONSIBLE FOR THE ACTS OR OMISSIONS OF THE CONTRACTOR, SUBCONTRACTORS, OR OTHER PERSONS PERFORMING ANY OF THE WORK INCLUDING THE FAILURE OF ANY OF THEM TO CARRY OUT THE WORK IN ACCORDANCE WITH CONTRACT DOCUMENTS.
2. GOVERNING SPECIFICATIONS: THE GOVERNING SPECIFICATIONS FOR THIS PROJECT ARE THE CITY OF ALAMOGORDO TECHNICAL STANDARDS, JUNE 14, 2022 EDITION, EXCEPT AS AMENDED BY THE PROJECT CONTRACT DOCUMENTS. IN THE EVENT OF A CONFLICT AMONG SPECIFICATION AND CONTRACT DOCUMENTS, THE PROJECT CONTRACT DOCUMENTS SHALL GOVERN.
3. QUANTITIES: ALL QUANTITIES PROVIDED IN THE PLANS ARE ESTIMATED BY THE ENGINEER. PAYMENT AND MEASUREMENT OF QUANTITIES SHALL BE IN ACCORDANCE WITH THE CONTRACT DOCUMENTS.
4. UTILITY LOCATION: THE LOCATIONS OF EXISTING UTILITIES SHOWN ON THE PLANS ARE APPROXIMATE AND OTHER SUCH UTILITIES MAY EXIST WHERE NONE ARE SHOWN ON THE PLANS. THE CONTRACTOR SHALL VERIFY THE LOCATION OF ALL UTILITIES PRIOR TO CONSTRUCTION BY METHODS INCLUDING, BUT NOT LIMITED TO; NEW MEXICO ONE-CALL, ELECTRONIC DEVICES, AND EXPLORATORY EXCAVATION. UTILITY LOCATION IS INCIDENTAL TO THE WORK AND NO ADDITIONAL PAYMENT WILL BE MADE EXCEPT AS PROVIDED BY THE CONTRACT DOCUMENTS.
5. OVERHEAD UTILITIES: THE CONTRACTOR SHALL DETERMINE, IN ADVANCE OF CONSTRUCTION OPERATIONS, IF OVERHEAD UTILITY LINES, SUPPORT STRUCTURES, POLES, GUYS, ETC. ARE AN OBSTRUCTION TO CONSTRUCTION OPERATIONS. IF ANY OBSTRUCTION IS EVIDENT, THE CONTRACTOR SHALL BE RESPONSIBLE FOR COORDINATING WITH THE APPROPRIATE UTILITY OWNER TO REMOVE, SUPPORT AND RECONNECT THE UTILITY TO ACCOMMODATE NEW CONSTRUCTION. ANY COST ASSOCIATED WITH THIS EFFORT SHALL BE THE RESPONSIBILITY OF THE CONTRACTOR UNLESS OTHERWISE INDICATED IN THE CONTRACT DOCUMENTS.

CITY OF ALAMOGORDO GENERAL NOTES

1. CITY OF ALAMOGORDO PROJECT MANAGER SHALL BE NOTIFIED 48-HOURS PRIOR TO HAULING WORK WITHIN THE CITY OF ALAMOGORDO RIGHT-OF-WAY.
2. ALL SUB-GRADE, BACKFILL, AND EMBANKMENTS SHALL BE COMPACTED TO 95% (± 2% OF OPTIMUM MOISTURE PER ASTM D-1557). TESTING REPORTS SHALL BE PROVIDED TO CITY OF ALAMOGORDO PROJECT MANAGER.
3. CITY OF ALAMOGORDO PROJECT MANAGER SHALL BE NOTIFIED 48-HOURS PRIOR TO FINAL INSPECTION OF ANY FACILITIES .
4. ANY MONUMENTS DISTURBED OR DESTROYED SHALL BE REPLACED BY A NM LICENSED SURVEYOR AT THE CONTRACTOR'S EXPENSE. CITY OF ALAMOGORDO SHALL BE NOTIFIED 48-HOURS PRIOR TO ANY MONUMENT PLACEMENT.
5. THE MAXIMUM WHEEL LOAD ALLOWED IN CITY OF ALAMOGORDO CHANNELS IS 12,000 POUNDS.
6. NO TRACKED VEHICLES ARE ALLOWED IN CITY OF ALAMOGORDO CONCRETE CHANNELS, REGARDLESS OF LOCATION WITHOUT WRITTEN PERMISSION FROM CITY OF ALAMOGORDO.
7. CRANES OPERATING IN CITY OF ALAMOGORDO CONCRETE CHANNELS WITH OUTRIGGERS SHALL LIMIT THE OUTRIGGER FOOTPRINT LOAD AREA TO LESS THAN 12,000 POUNDS.

Dwg Info: q:\Projects\2022\12052_city_of_alamogordo\1_drainage_basins\400_CAD\12_Mun02_sheets\2_GENERAL NOTES, ABBREVIATIONS, AND LEGEND.dwg - Plotfile: 4/8/2024

NO.	DATE	COMMENT



DRAINAGE BASINS SEDIMENT REMOVAL
 GENERAL NOTES, ABBREVIATIONS, AND
 LEGEND



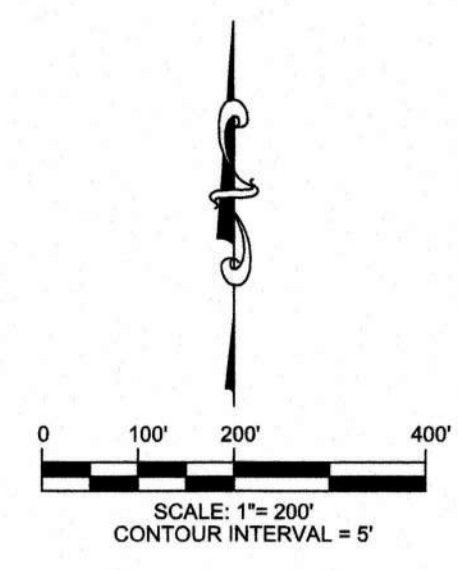
CobbFendley
 3820 Academy Parkway North NE
 Albuquerque, NM 87109
 505.508.0786 | Fax 505.308.0837 | www.cobbfendley.com

DESIGN BY:	DRAWN BY:
DATE:	JOB NUMBER:

SHEET
2

!!! WARNING !!!
 EXISTING UTILITIES IN THE AREA. CONTRACTOR SHALL FIELD VERIFY THE LOCATION OF ALL EXISTING UTILITIES WITH THE PROVIDER PRIOR TO START OF CONSTRUCTION AND SHALL IMMEDIATELY NOTIFY THE ENGINEER OF ANY CONFLICTS DISCOVERED. CONTRACTOR IS RESPONSIBLE FOR COORDINATING UTILITY RELOCATION WHERE NECESSARY AND PROTECTING EXISTING UTILITIES (SHOWN OR NOT SHOWN). IF ANY EXISTING UTILITIES ARE DAMAGED, THE CONTRACTOR SHALL REPLACE THEM AT THEIR OWN EXPENSE.

CITY OF ALAMOGORDO 2020_3 - BM3
 N: 702149.885
 E: 1732557.972
 ELEV: 4443.168



CP-80 - #5RB/PC
 N: 701334.282
 E: 1735353.355
 ELEV: 4458.152

CP-82 - 5RB/PC
 N: 7000901.805
 E: 1730965.042
 ELEV: 4412.970

CP-84 - #5RB/PC
 N: 699922.815
 E: 1732170.899
 ELEV: 4401.888

CP-81 - #5RB/PC
 N: 699415.838
 E: 1734094.843
 ELEV: 4410.647

CP-83 - #5RB/PC
 N: 698661.756
 E: 1730295.880
 ELEV: 4380.359

**Survey Control Report
 Alamogordo Drainage
 (Griggs/Public Works)
 2212-059-01
 November 13, 2023**

The intended purpose of the control established for the Alamogordo Drainage Basins (Griggs/Public Works) Survey to provide a spatial reference for the project by the prime client, City of Alamogordo. The intended accuracy of the control provided in this report is 0.10' Horizontal and 0.10' Vertical. A more detailed description of the control is provided below:

- Horizontal Datum and Vertical Datums are NAD 83, NAVD 88, respectively.
- GEOID 18 (Contour) was used to model the vertical plane.
- Coordinates are GROUND MODIFIED based on the New Mexico State Plane Central Zone projection, modified about 0.00' North, 0.00' East using a project combined GRID TO GROUND scale factor of 1.000296190.
- Bearings are New Mexico State Plane Central Zone NAD 83 GRID bearings.
- Units are on US Survey Feet.
- City of Alamogordo (COA) Monument 'COA2020_3' (BM3) used as basis for control points.
- The control monuments were set, observed, and adjusted in September 2022.

Final Adjusted Control Values (Ground Modified Values)

P#	Northing	Easting	Elevation	Description
3	702149.885	1732557.972	4443.168	COA2020_3 - BM3
280	701334.282	1735353.355	4458.152	SET SRB/PC CP-80
281	699415.838	1734094.843	4410.647	SET SRB/PC CP-81
282	700901.805	1730965.042	4412.970	SET SRB/PC CP-82
283	698661.756	1730295.880	4380.359	SET SRB/PC CP-83
284	699922.815	1732170.899	4401.888	SET SRB/PC CP-84

I, WILLIAM T. GOSS, NMPLS # 16006, DO HEREBY CERTIFY THAT THIS TOPOGRAPHIC SURVEY WAS PREPARED BY ME OR UNDER MY DIRECT SUPERVISION BASED ON AN ACTUAL SURVEY ON THE GROUND AS DESCRIBED HEREIN; THAT I AM RESPONSIBLE FOR THIS SURVEY; AND THAT THE SURVEY MEETS THE MINIMUM STANDARDS FOR SURVEYING IN NEW MEXICO.



William T. Goss
 WILLIAM T. GOSS, NMPLS # 16006
 COBB, FENDLEY & ASSOCIATES, INC.
 3820 ACADEMY PARKWAY NORTH N.E.
 ALBUQUERQUE, N.M. 87109
 PH. (505) 508-0786
 DATE: 12/21/2023

NO.	DATE	COMMENT

REVISIONS

SURVEY CONTROL


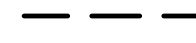



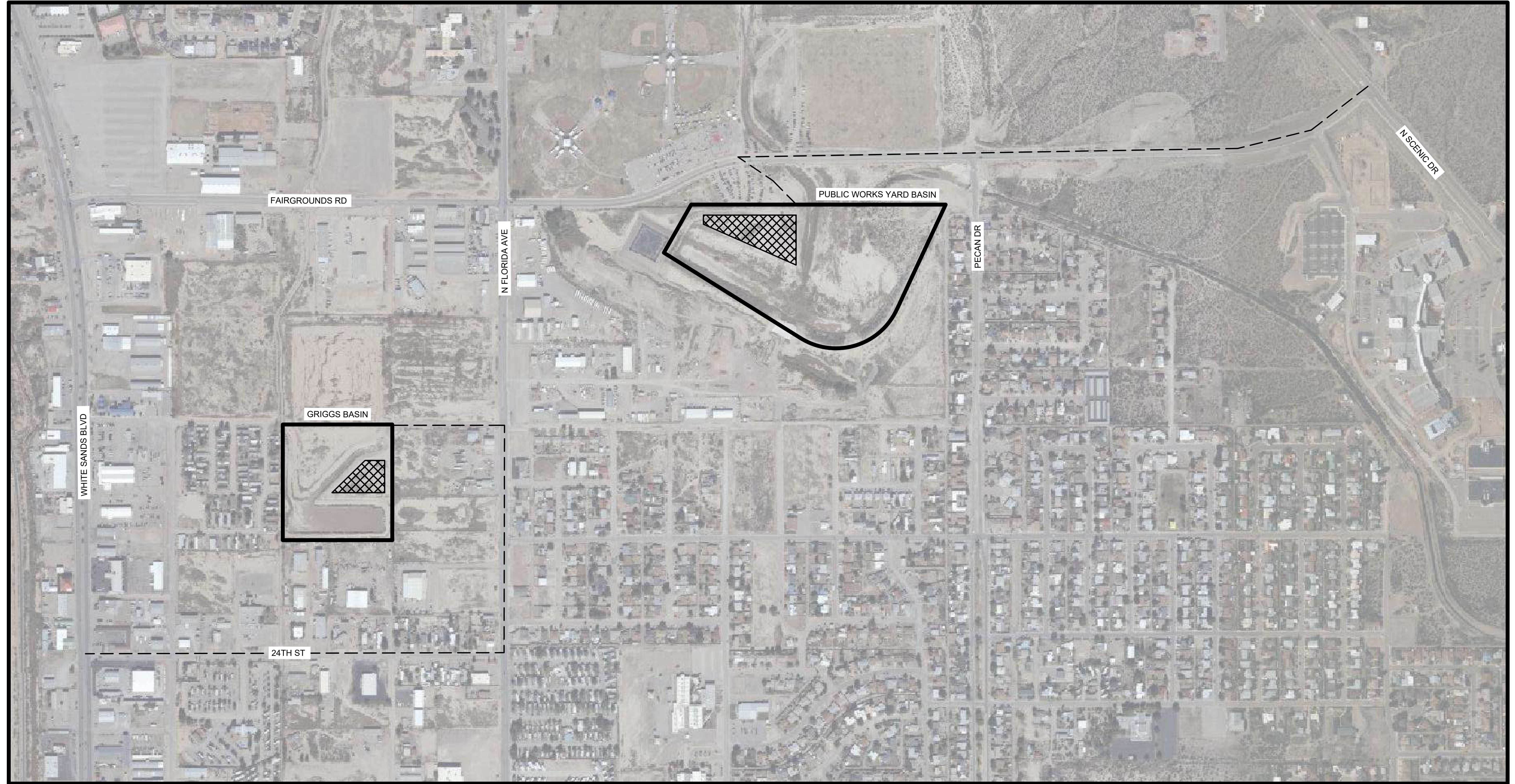
CobbFendley
 TBPELS Firm Registration No. 274
 Land Surveying Firm Registration No. 10046700
 3820 ACADEMY PARKWAY NORTH NE
 ALBUQUERQUE, NM 87109
 505.508.0786 | fax. 505.508.0837 | www.cobbendley.com

DESIGN BY:	DRAWN BY:
DATE:	JOB NUMBER:
SHEET	

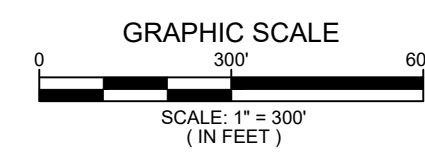
Dwg Info: C:\Projects\2023\12\21\2023_City_of_Alamogordo\01_Drainage_Basins\00_CAD\12_Mun\02_SHEETS\3 SURVEY CONTROL.dwg - Plotted: 12/20/2023

!!! WARNING !!!
 EXISTING UTILITIES IN THE AREA. CONTRACTOR SHALL FIELD VERIFY THE LOCATION OF ALL EXISTING UTILITIES WITH THE PROVIDER PRIOR TO START OF CONSTRUCTION AND SHALL IMMEDIATELY NOTIFY THE ENGINEER OF ANY CONFLICTS DISCOVERED. CONTRACTOR IS RESPONSIBLE FOR PROTECTING EXISTING UTILITIES (SHOWN OR NOT SHOWN). IF ANY EXISTING UTILITIES ARE DAMAGED, THE CONTRACTOR SHALL REPAIR THEM AT THEIR OWN EXPENSE.

- LEGEND**
-  PROJECT AREA
 -  ACCESS ROUTE
 -  CONSTRUCTION STAGING AREA



1 CONSTRUCTION STAGING AND ACCESS MAP



Dwg Info: q:\Projects\2022\12052_city_of_alamogordo\1_drainage_basins\400_CAD\12_Mun02_sheets\4 CONSTRUCTION ACCESS MAP.dwg - Plotted: 4/8/2024

NO.	DATE	COMMENT



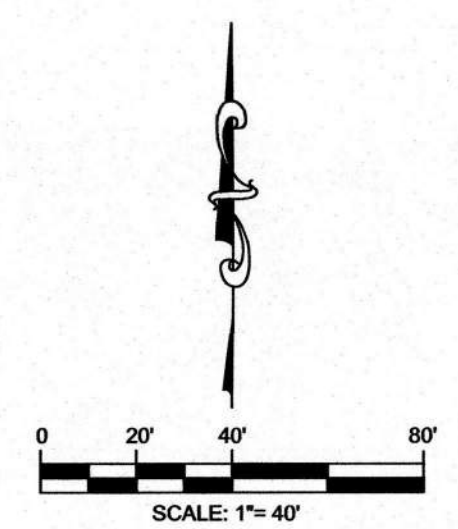
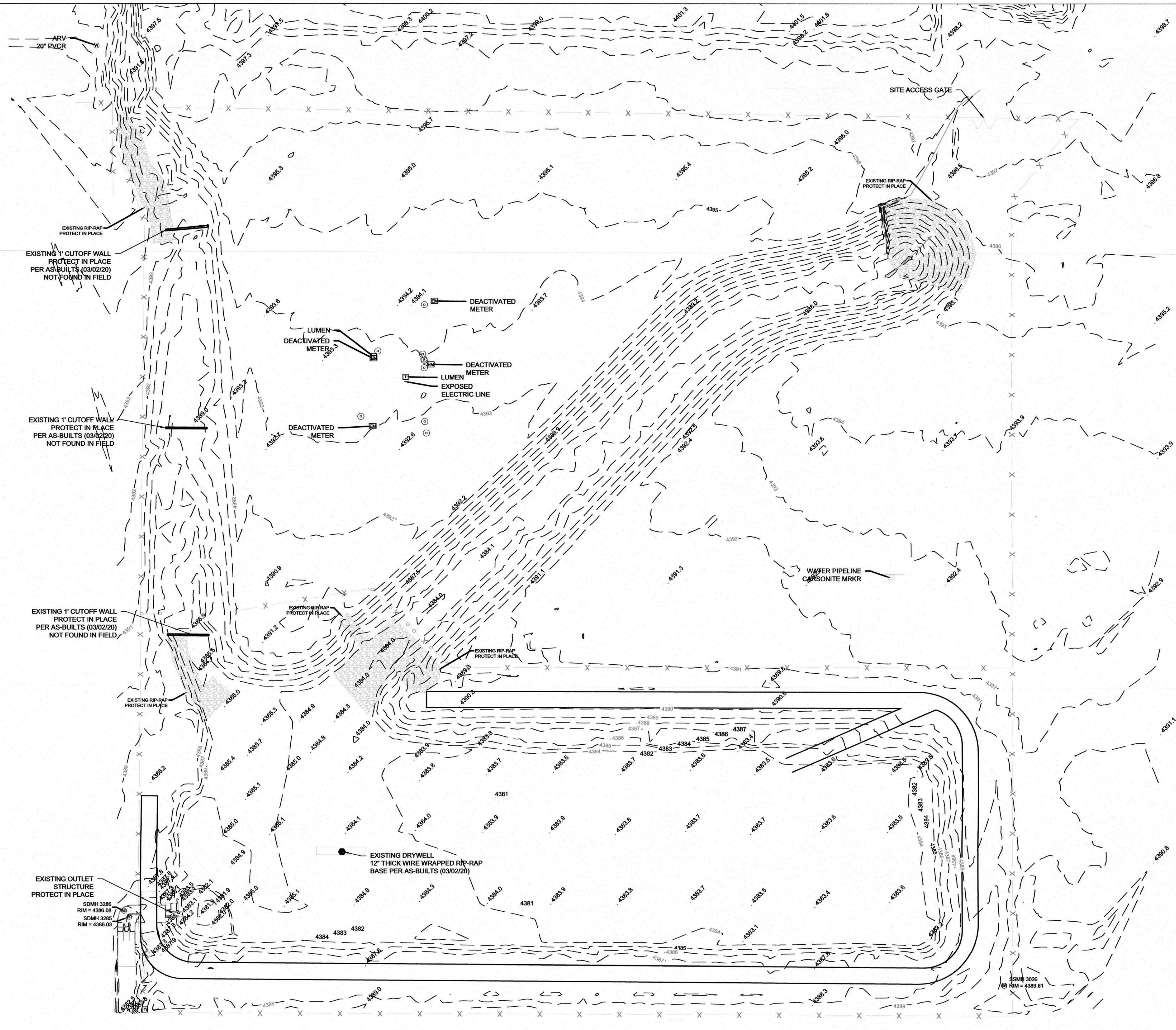
DRAINAGE BASINS SEDIMENT REMOVAL
 CONSTRUCTION STAGING AND ACCESS MAP



CobbFendley
 3820 Academy Parkway North NE
 Albuquerque, NM 87109
 505.508.0786 | Fax 505.308.0837 | www.cobbendley.com

DESIGN BY:	DRAWN BY:
DATE:	JOB NUMBER:
SHEET	
4	

Dwg Info: C:\Projects\2022\12059_city_of_alamogordo\1_drainage_basins\400_CAD\12_Min\02_sheets\2212-09\01_GRIGGSBASIN_PLAN.dwg - Plotref: 12/21/2023



UTILITY / SURVEY LEGEND

- | | | | |
|--|--------------------------|--|------------------------|
| | Electric Meter | | Sanitary Sewer Manhole |
| | Telephone Pedestal | | Storm Drain Manhole |
| | Sanitary Sewer Clean Out | | Control Point |
| | Exist. Bollard | | Monument Found |
| | Exist. Signs | | Exist. Spot Elevation |
| | | | Exist. Conc. |

SURVEY LINETYPES

- | | |
|--|----------------------|
| | Exist. Fences |
| | Exist. Edge of asph. |
| | Exist. Curbing |
| | Exist. Edge of conc. |
| | Exist. Contour Major |
| | Exist. Contour Minor |

Survey Notes

- Bearings are based upon New Mexico State Plane Grid Bearings (New Mexico Central 3002 Zone). The coordinates shown hereon are modified (surface) New Mexico State Plane Coordinates and were scaled by the project combined factor of 1.0002996190 around an origin of 0,0.
- Elevations are based upon the NAVD 88 datum.
- The coordinates and elevations shown hereon are expressed in U.S. Survey Feet.
- City of Alamogordo (COA) Monument 'COA2020_3' (BM3) used as basis for control points. The control monuments were set, observed, and adjusted in September 2022.
- Field surveys were conducted September & October 2022 and September & October 2023.

THIS IS NOT A BOUNDARY SURVEY OR A RIGHT-OF-WAY SURVEY. APPARENT PROPERTY CORNERS, RIGHT-OF-WAY LINES, 12.8.2 NMAC 2 OR PROPERTY LINES AS SHOWN ARE DERIVED FROM RECORD SURVEY PLATS, RIGHT-OF-WAY MAPS, OR DEEDS REFERENCED HEREON AND ARE NOT GUARANTEED OR TO BE RELIED ON FOR THE ESTABLISHMENT OF PROPERTY LINES.

I, WILLIAM T. GOSS, NMPLS # 16006, DO HEREBY CERTIFY THAT THIS TOPOGRAPHIC SURVEY WAS PREPARED BY ME OR UNDER MY DIRECT SUPERVISION BASED ON AN ACTUAL SURVEY ON THE GROUND AS DESCRIBED HEREIN; THAT I AM RESPONSIBLE FOR THIS SURVEY; AND THAT THE SURVEY MEETS THE MINIMUM STANDARDS FOR SURVEYING IN NEW MEXICO.

William T. Goss 12/21/2023
DATE

WILLIAM T. GOSS, NMPLS # 16006
COBB, FENDLEY & ASSOCIATES, INC.
3820 ACADEMY PARKWAY NORTH N.E.
ALBUQUERQUE, N.M. 87109
PH. (505) 508-0786



NO.	DATE	COMMENT

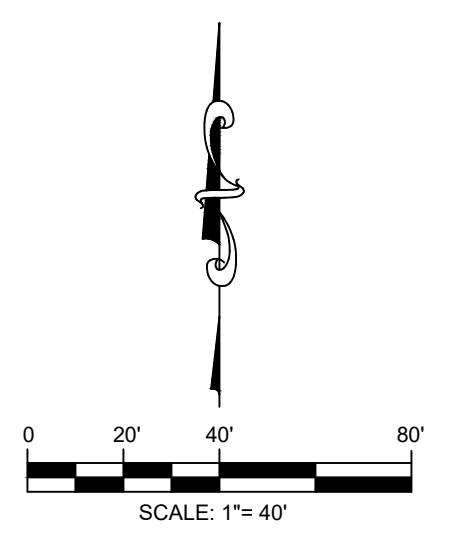
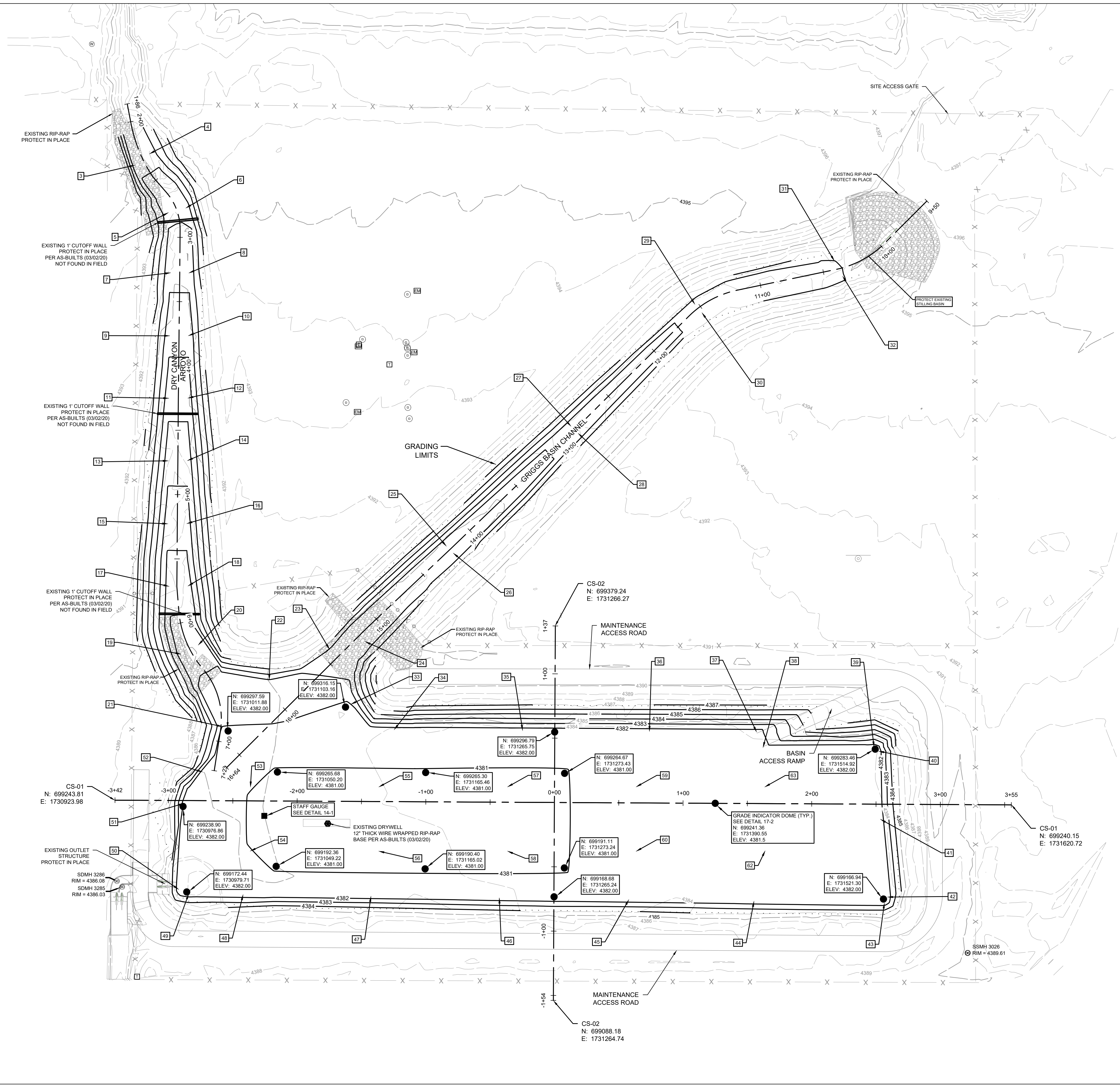
DRAINAGE BASINS SEDIMENT REMOVAL
GRIGGS BASIN
EXISTING TOPOGRAPHY



CobbFendley
TBPELS Firm Registration No. 274
Land Surveying Firm Registration No. 10046700
3820 Academy Parkway North NE
Albuquerque, NM 87109
505.508.0786 | fax. 505.508.0837 | www.cobbendley.com

DESIGN BY: CRN
DRAWN BY: CRN
DATE: December 2023
JOB NUMBER: 2212-059-01
SHEET

Dwg Info: q:\Projects\2022\12052_city_of_alamogordo\1_drainage_basins\01_GRIGGSBASIN_PLAN.dwg - Plotter: 4/8/2024

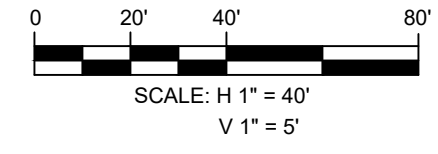
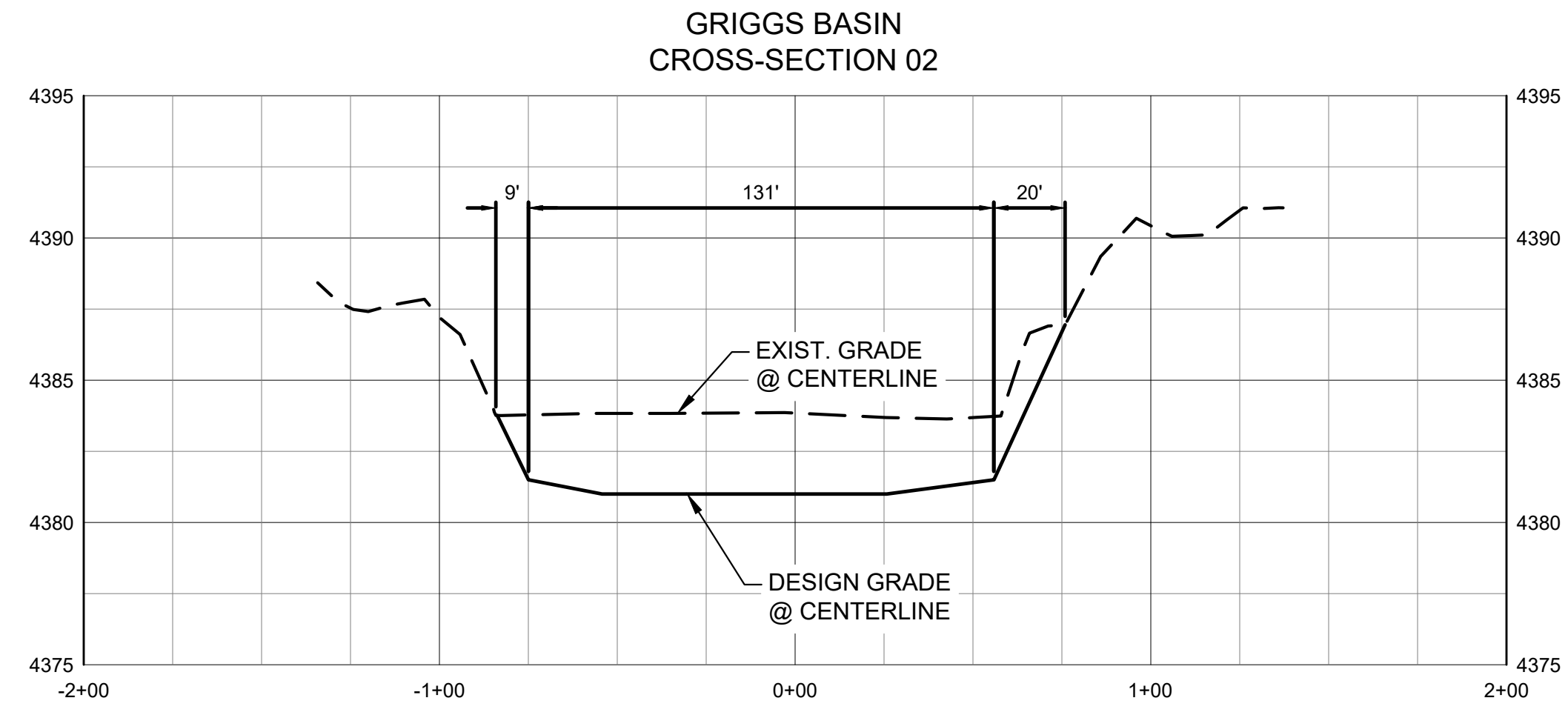
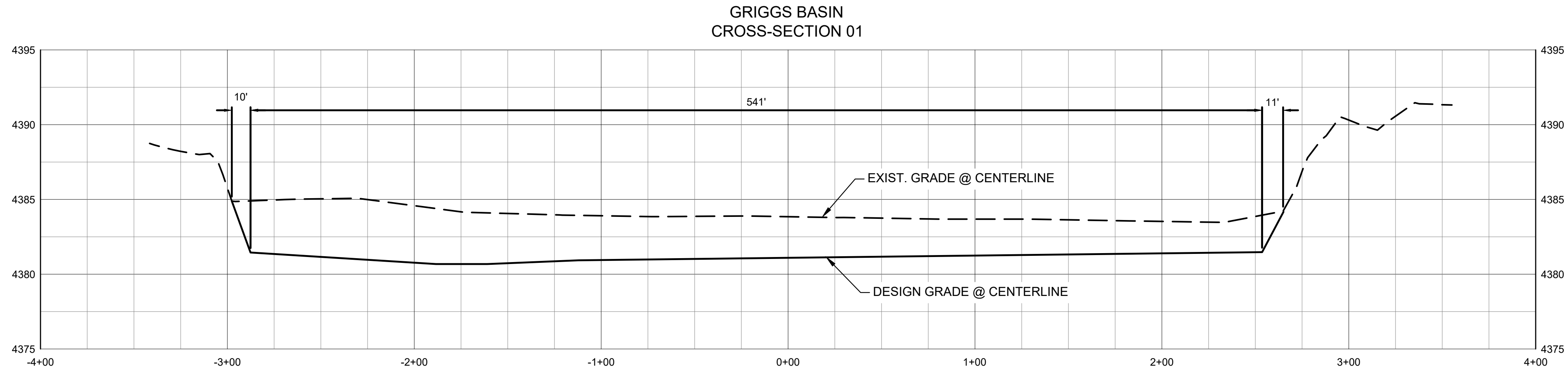


GRIGGS BASIN GRADING TABLE			
POINT#	NORTHING	EASTING	ELEVATION
03	699737.40	1730993.29	4391.22
04	699746.28	1730950.96	4391.26
05	699700.47	1730995.33	4390.28
06	699704.15	1730979.19	4390.29
07	699653.74	1730967.02	4389.31
08	699653.64	1730981.59	4389.31
09	699604.79	1730966.32	4388.33
10	699604.90	1730981.15	4388.34
11	699556.26	1730965.66	4387.39
12	699556.35	1730980.78	4387.37
13	699507.60	1730965.27	4386.41
14	699507.80	1730980.43	4386.42
15	699458.65	1730964.92	4385.42
16	699458.84	1730979.93	4385.42
17	699410.00	1730964.59	4384.46
18	699409.89	1730979.50	4384.44
19	699357.36	1730975.15	4383.42
20	699364.48	1730988.80	4383.46
21	699301.01	1731007.41	4382.00
22	699343.13	1731042.40	4383.00
23	699356.53	1731091.13	4383.00
24	699366.99	1731118.53	4383.00
25	699441.37	1731181.44	4383.12
26	699435.73	1731187.09	4383.19
27	699534.63	1731278.32	4384.19
28	699528.81	1731284.16	4384.19
29	699629.41	1731374.64	4385.24
30	699623.31	1731379.98	4385.16
31	699663.01	1731483.66	4386.00
32	699650.91	1731489.72	4386.00
33	699320.54	1731104.12	4382.00
34	699298.73	1731141.06	4382.00
35	699299.99	1731240.81	4382.00
36	699297.46	1731339.40	4382.00
37	699296.93	1731422.65	4382.00
38	699284.88	1731427.75	4382.00
39	699285.33	1731514.00	4382.00
40	699281.88	1731517.71	4382.00
41	699228.85	1731519.12	4382.00
42	699168.49	1731524.66	4382.00
43	699163.74	1731522.04	4382.00
44	699165.06	1731420.66	4382.00
45	699166.32	1731323.32	4382.00
46	699167.23	1731222.72	4382.00
47	699168.93	1731122.90	4382.00
48	699170.23	1731023.51	4382.00
49	699170.78	1730980.19	4382.00
50	699174.55	1730973.33	4382.00
51	699241.28	1730977.62	4382.00
52	699265.77	1730991.90	4382.00
53	699254.21	1731029.26	4382.00
54	699204.21	1731029.26	4381.00
55	699254.21	1731129.26	4380.97
56	699204.21	1731129.26	4380.97
57	699254.21	1731229.26	4380.99
58	699204.21	1731229.26	4380.98
59	699254.21	1731329.26	4381.30
60	699204.21	1731329.26	4381.33
61	699254.21	1731429.26	4381.46
62	699204.21	1731429.26	4381.44

STAFF GAUGE COORDINATES
 N: 699231.62
 E: 1731040.06
 ELEV: 4381.00

NO.	DATE	COMMENT
DRAINAGE BASINS SEDIMENT REMOVAL GRIGGS BASIN GRADING PLAN		
3820 Academy Parkway North NE Albuquerque, NM 87109 505.508.0766 Fax 505.308.0837 www.cobbendley.com		
DESIGN BY:	DRAWN BY:	JOB NUMBER:
CA	CRN	2212-059-01
DATE:		
April 2024		
SHEET		
6		

Dwg Info: q:\Projects\22212052_city_of_alamogordo\01_drainage_basins\01_CAD\12_Mun02_sheets\2212-059-01_GRIGGSBASIN_PLAN.dwg - Plotted: 4/9/2024



NO.	DATE	COMMENT

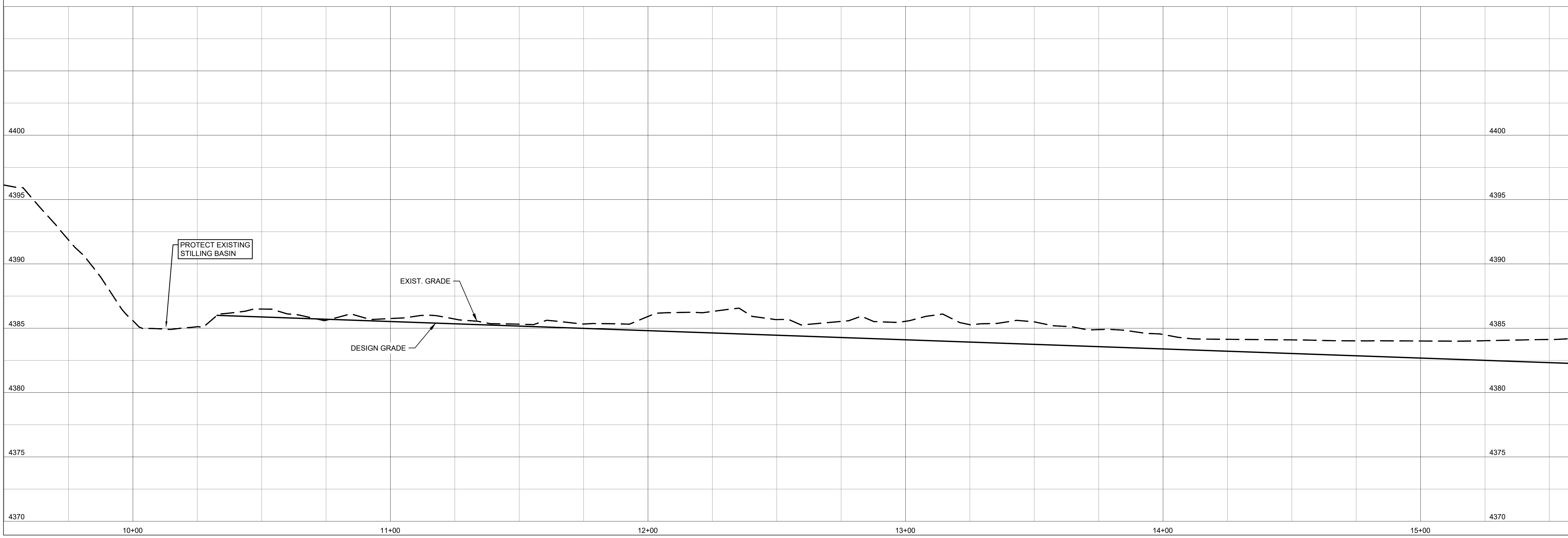
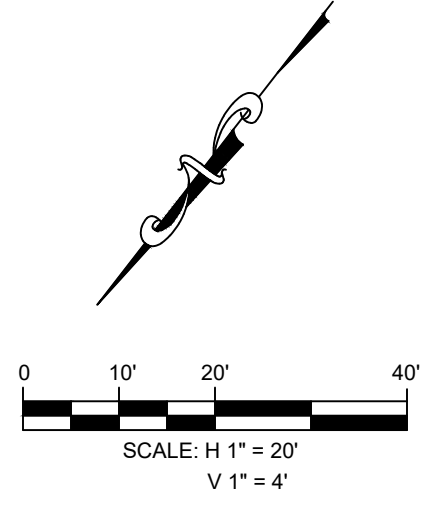
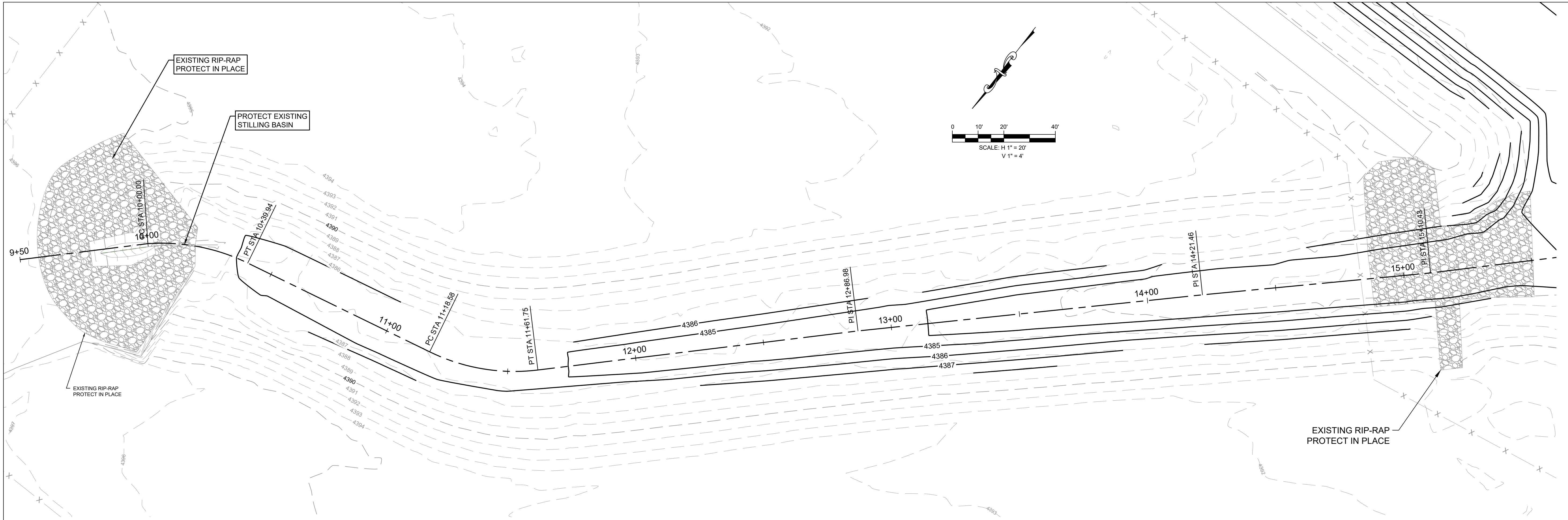


DRAINAGE BASINS SEDIMENT REMOVAL
GRIGGS BASIN
SECTIONS



CobbFendley
3820 Academy Parkway North NE
Albuquerque, NM 87109
505.508.0786 | Fax 505.308.0837 | www.cobbendley.com

DESIGN BY: CA	DRAWN BY: CRN
DATE: April 2024	JOB NUMBER: 2212-059-01
SHEET	



NO.	DATE	COMMENT



DRAINAGE BASINS SEDIMENT REMOVAL
GRIGGS BASIN
GRIGGS BASIN CHANNEL PLAN &
PROFILE

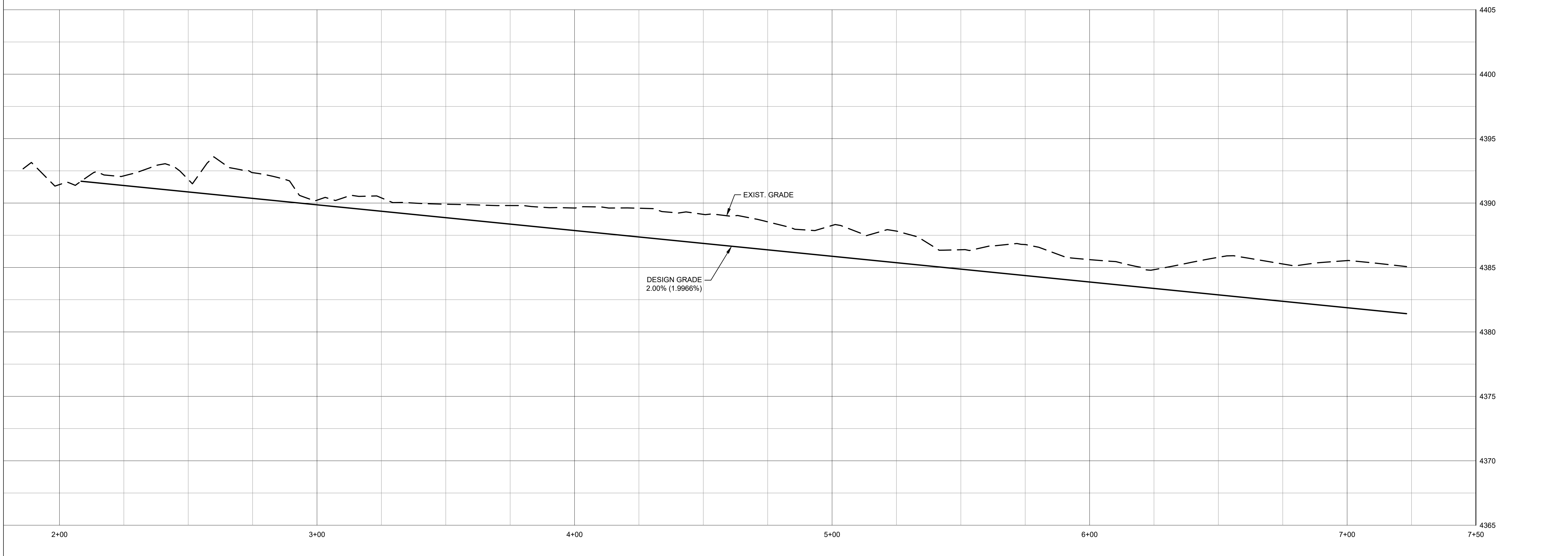
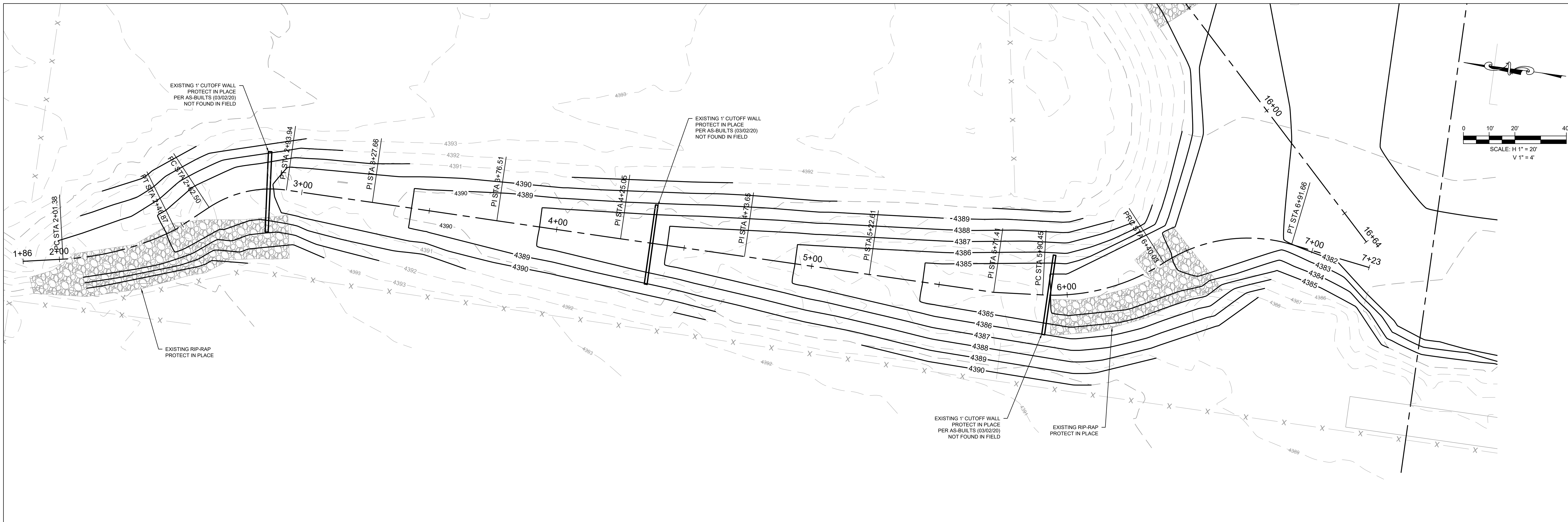


CobbFendley
 3820 Academy Parkway North NE
 Albuquerque, NM 87109
 505.508.0786 | Fax 505.308.0837 | www.cobbhendley.com

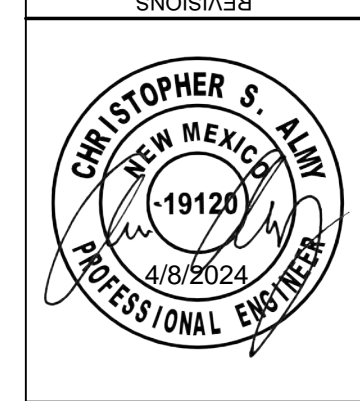
DESIGN BY: CA	DRAWN BY: CRN
DATE: April 2024	JOB NUMBER: 2212-059-01
SHEET	

Dwg file: q:\Projects\2022\2052_city_of_alamogordo\01_drainage_basins\400_CAD\12_Mun02_sheets\2212-059-01_GRIGGSBASIN_PP.dwg - Plotter: 4/8/2024

Dwg Info: q:\Projects\2022\12052_city_of_alamogordo\1_drainage_basins\01_CAD\12_Mun02_sheets\212-059-01_GRIGGSBASIN_PP.dwg - Plotter: 4/8/2024



NO.	DATE	COMMENT



**DRAINAGE BASINS SEDIMENT REMOVAL
GRIGGS BASIN
DRY CANYON ARROYO CHANNEL PLAN &
PROFILE**

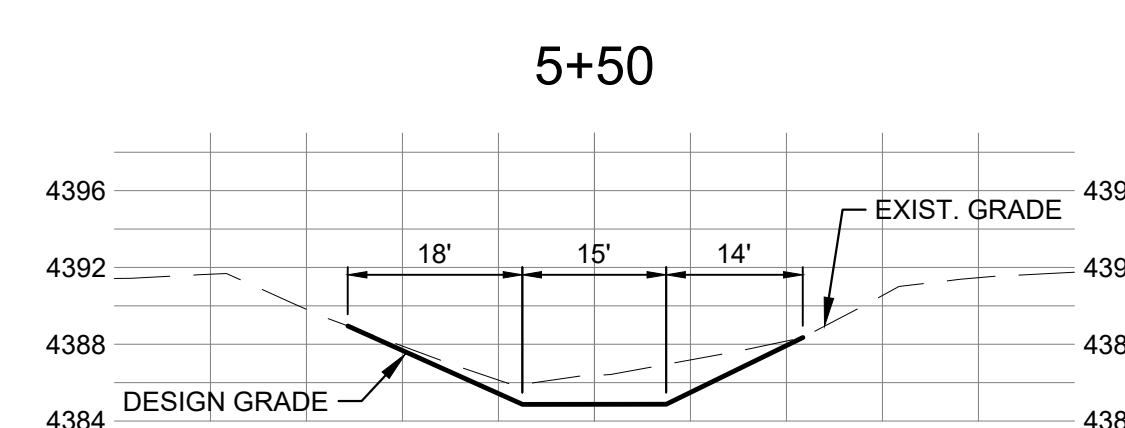
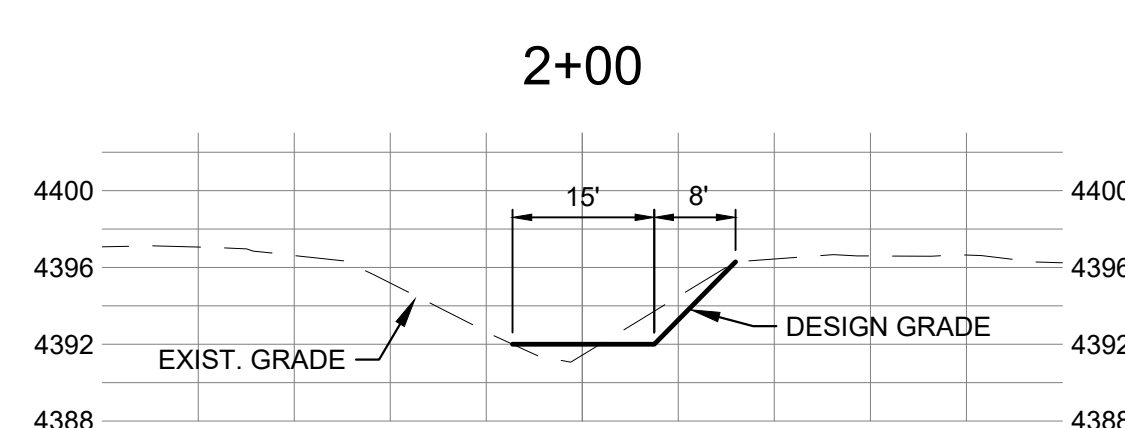
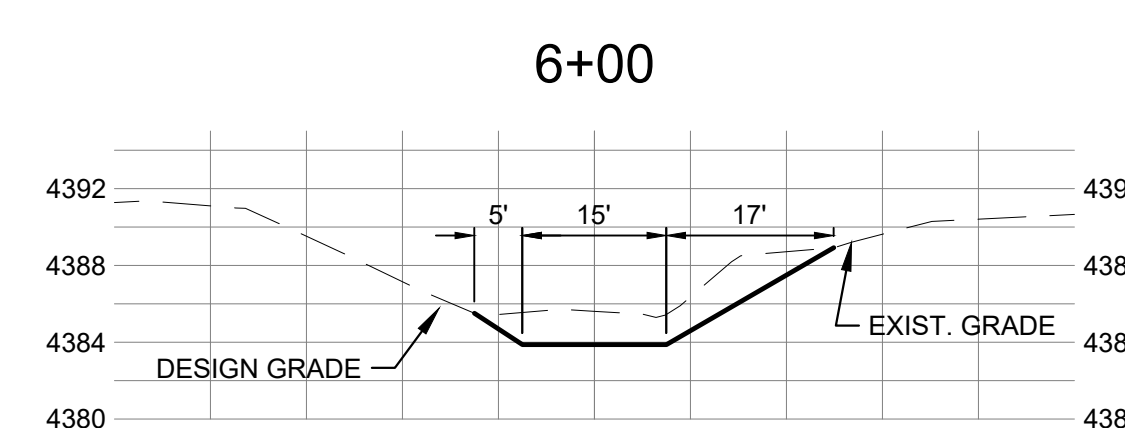
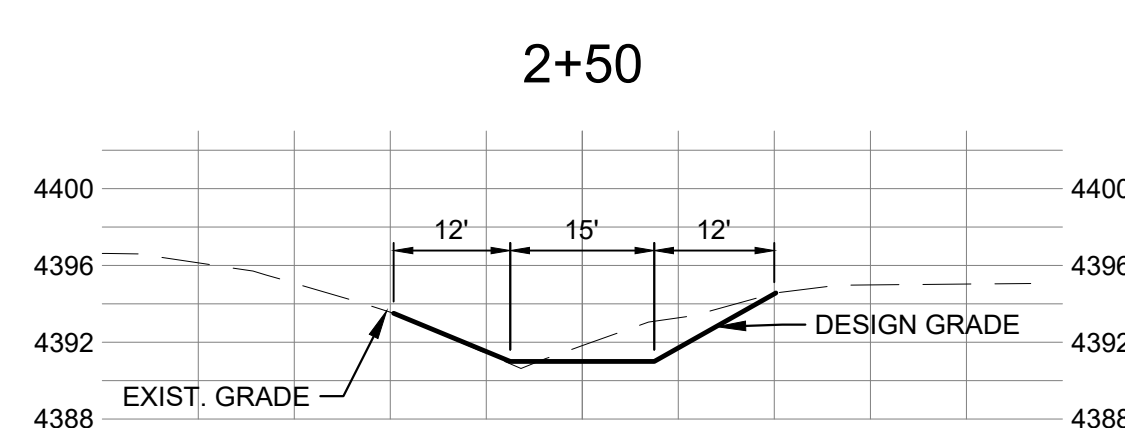
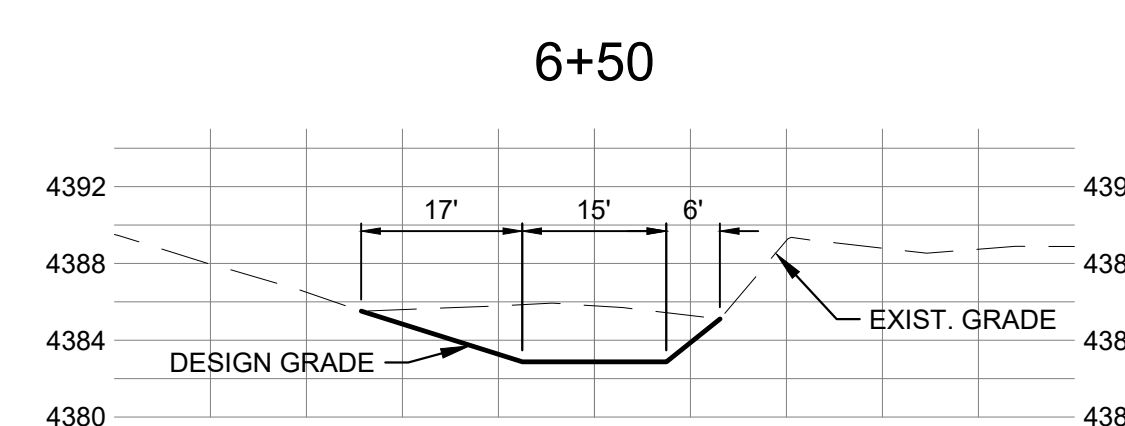
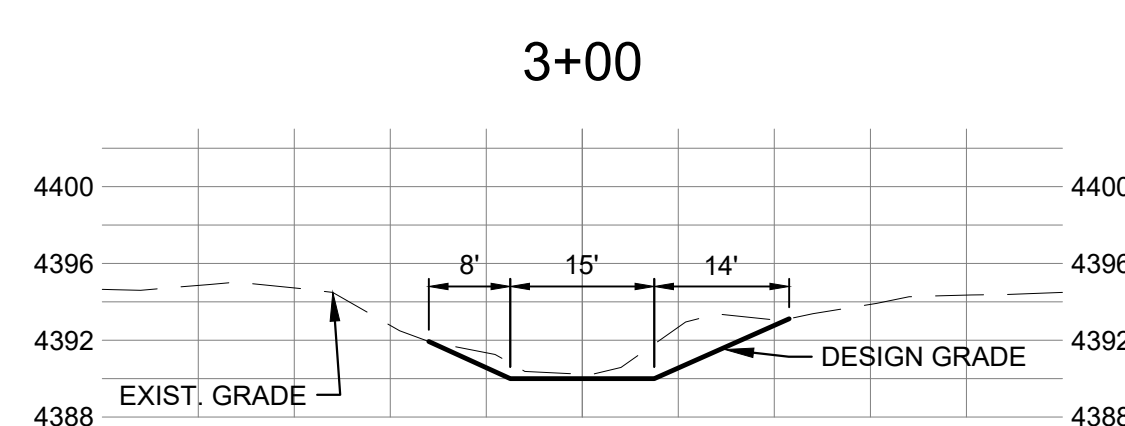
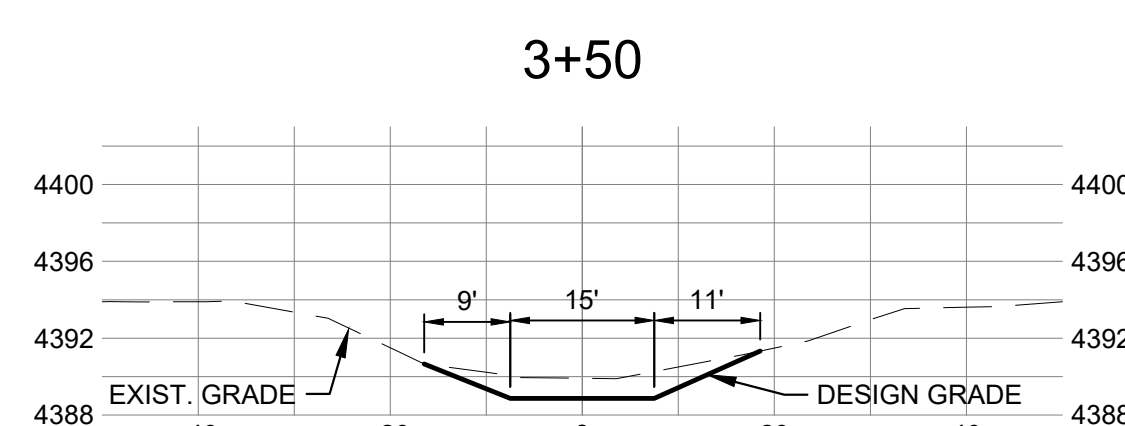
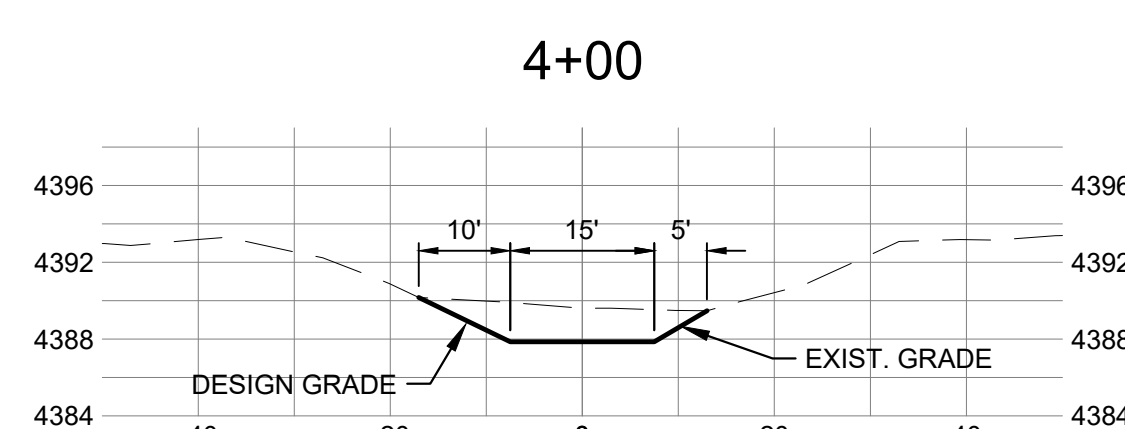
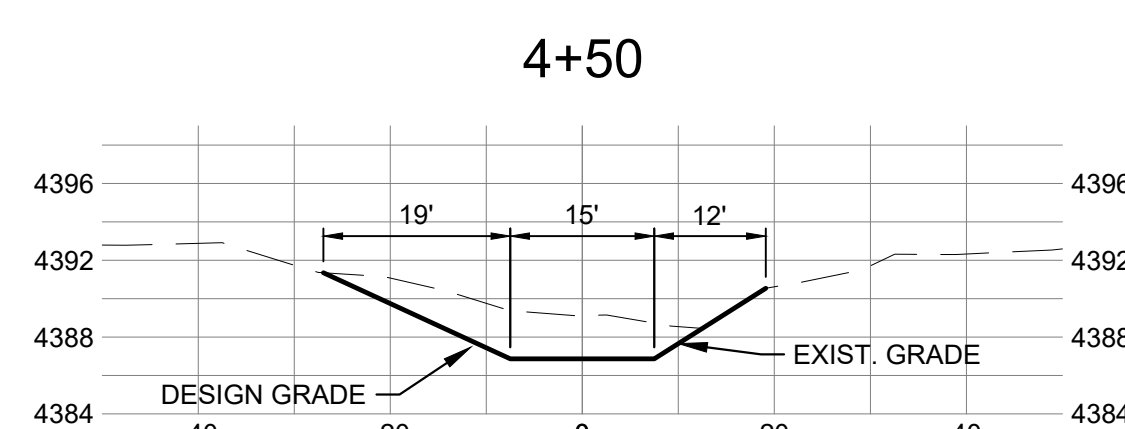
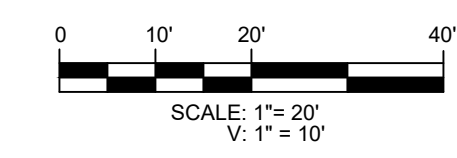
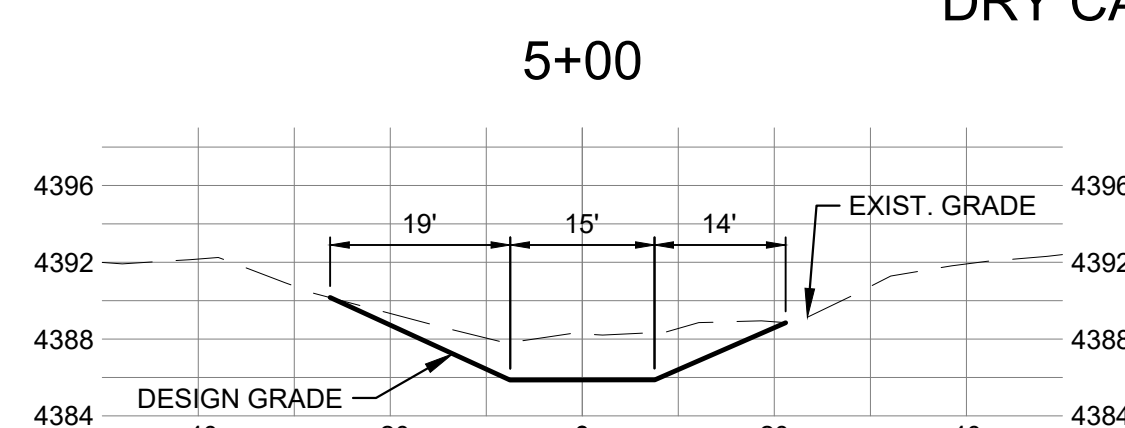
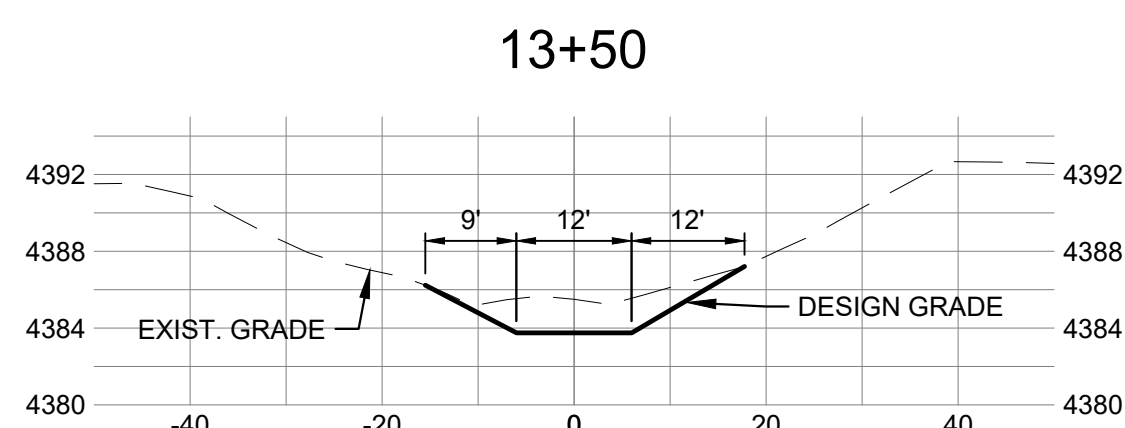
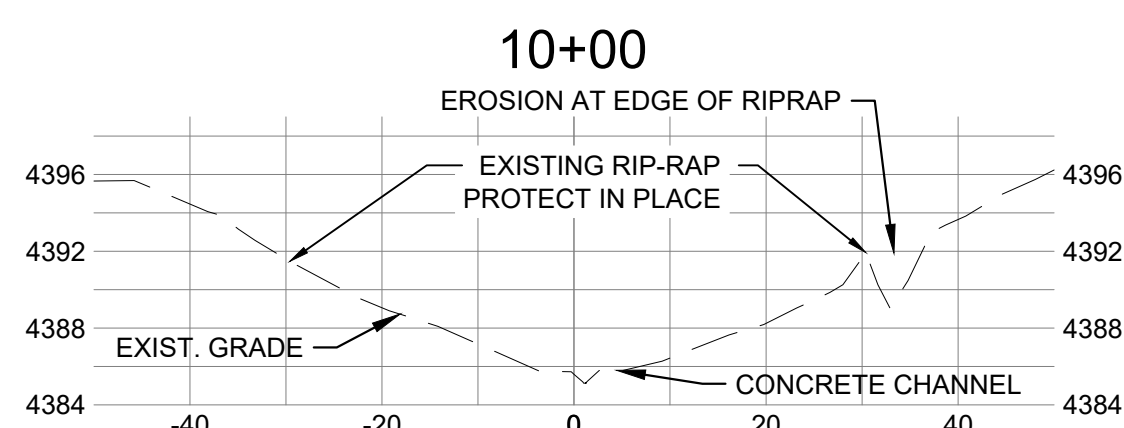
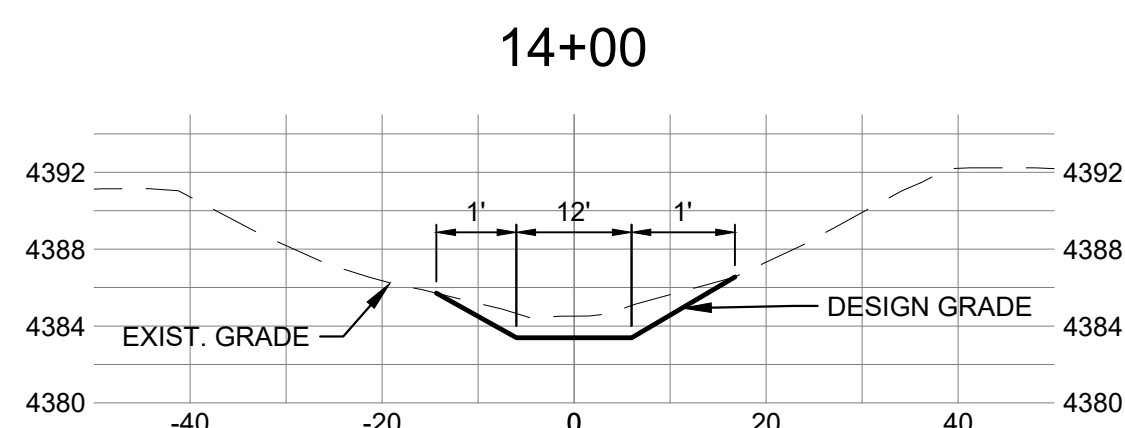
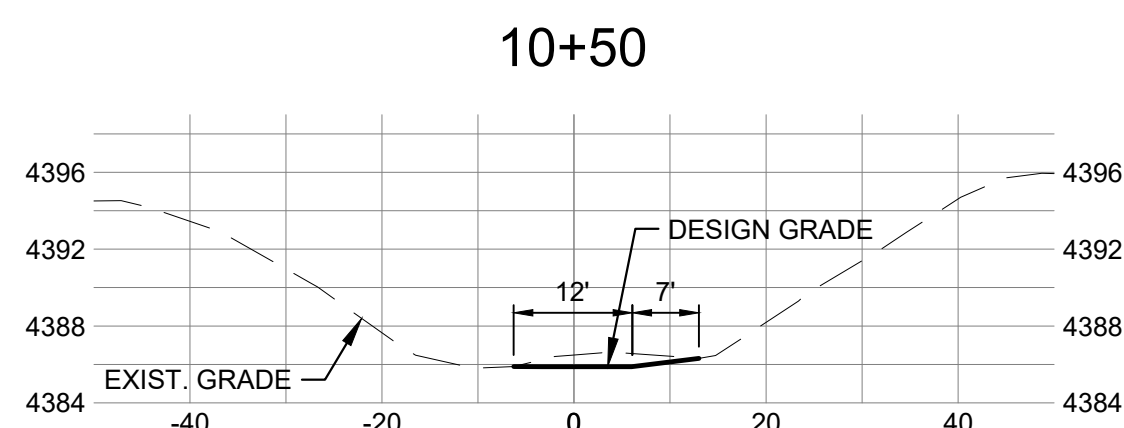
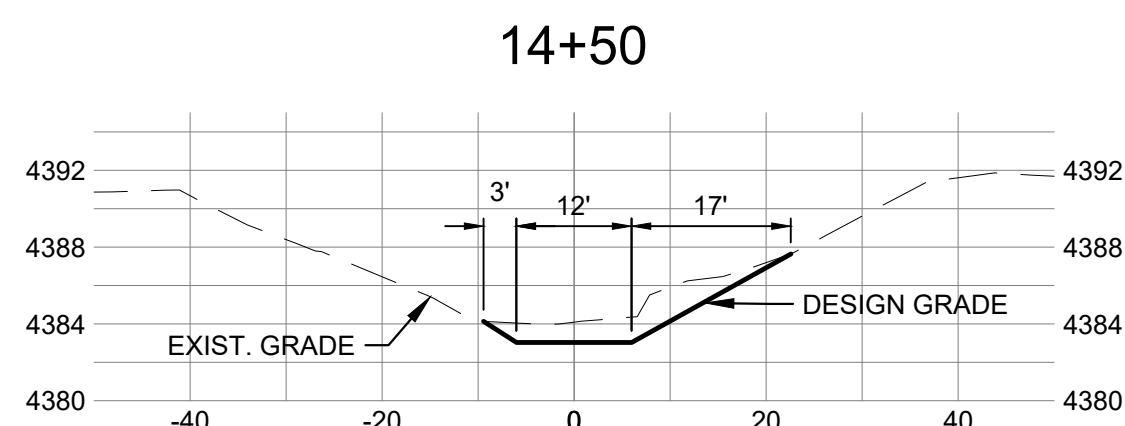
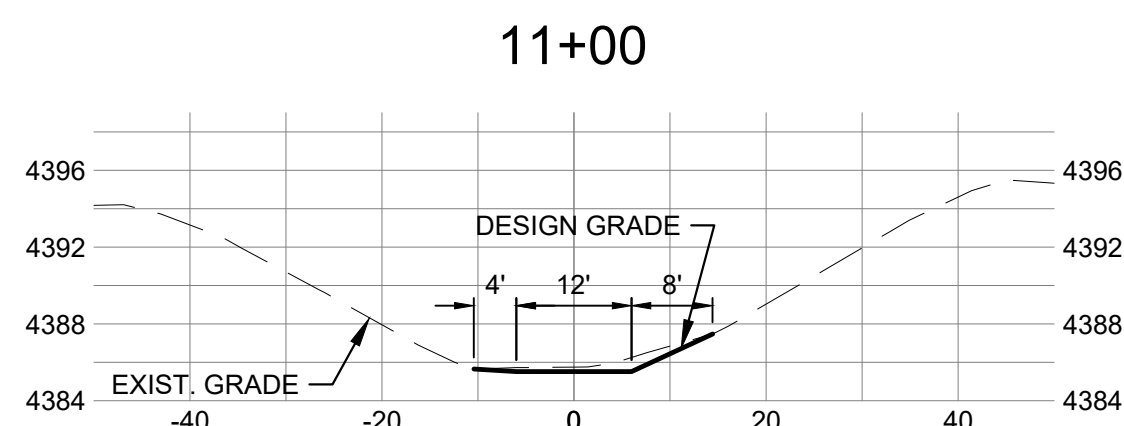
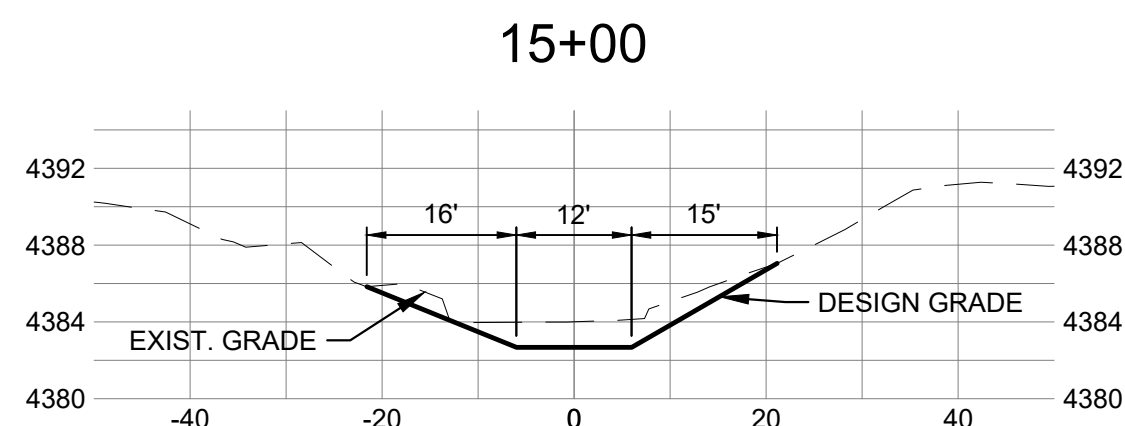
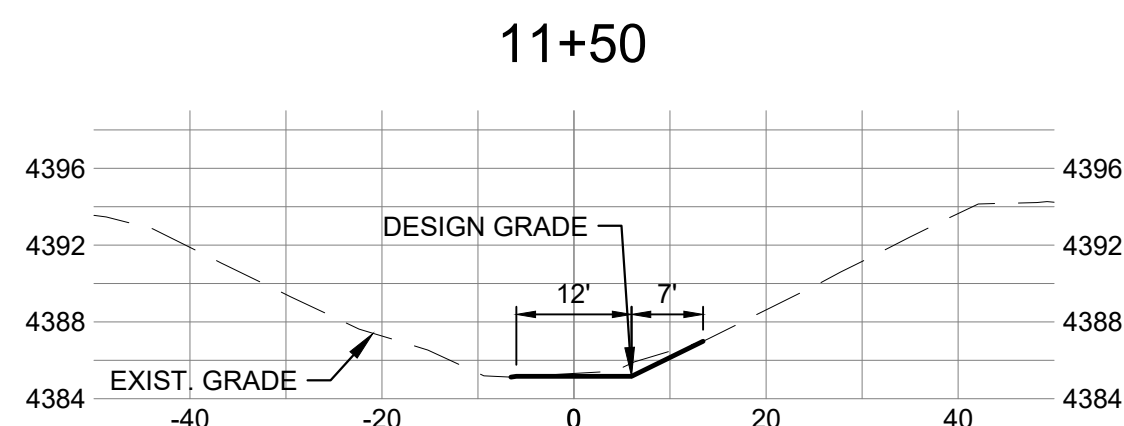
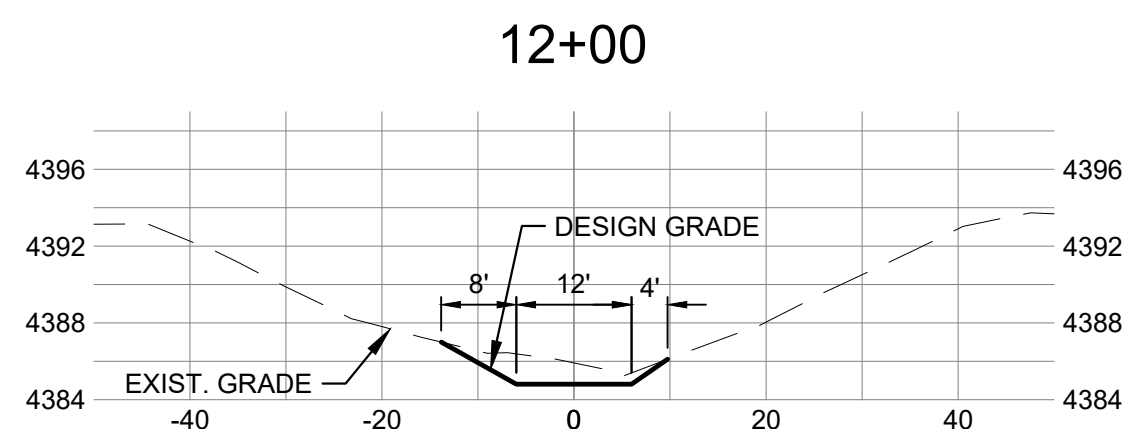
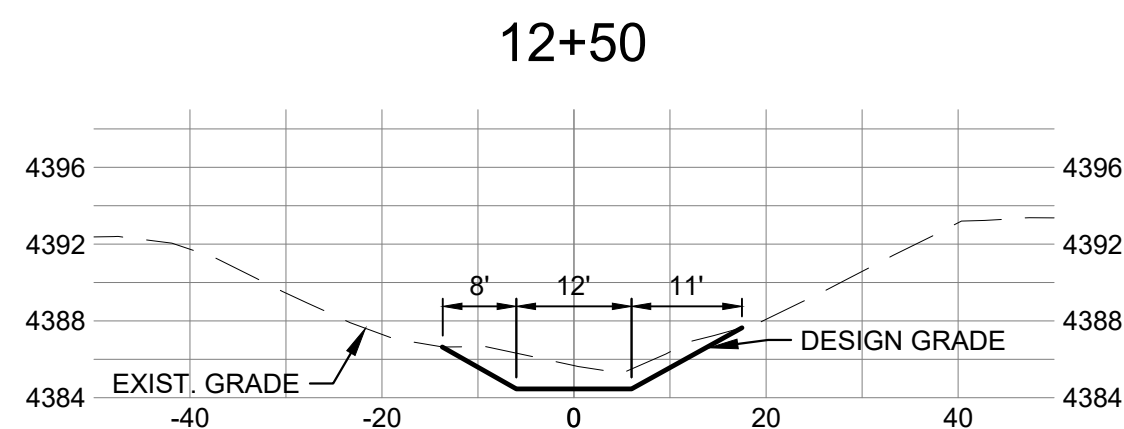
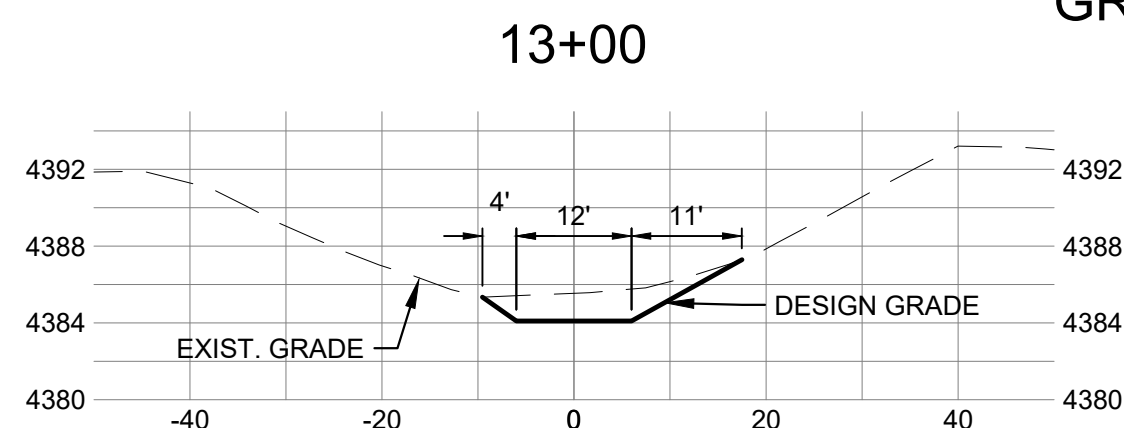


CobbFendley
3820 Academy Parkway North NE
Albuquerque, NM 87109
505.508.0786 | Fax 505.308.0837 | www.cobbendley.com

DESIGN BY: CA	DRAWN BY: CRN
DATE: April 2024	JOB NUMBER: 2212-059-01
SHEET	

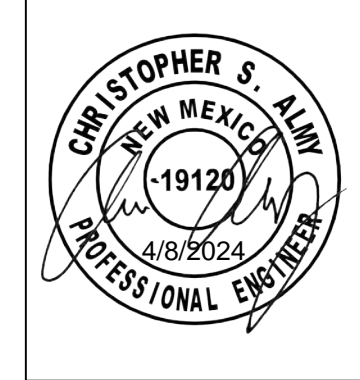
GRIGGS BASIN CHANNEL

DRY CANYON ARROYO

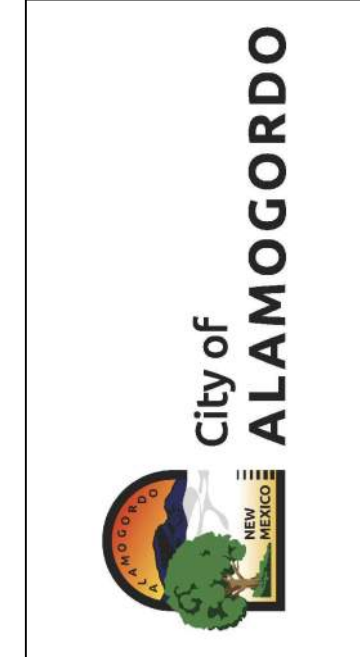


Dwg Info: q:\Projects\2022\12052_city_of_alamogordo\1_drainage_basins\00_CAD\12_Mun02_sheets\212-059-01_GRIGGSBASIN_PP.dwg - Plotter: 4/8/2024

NO.	DATE	COMMENT

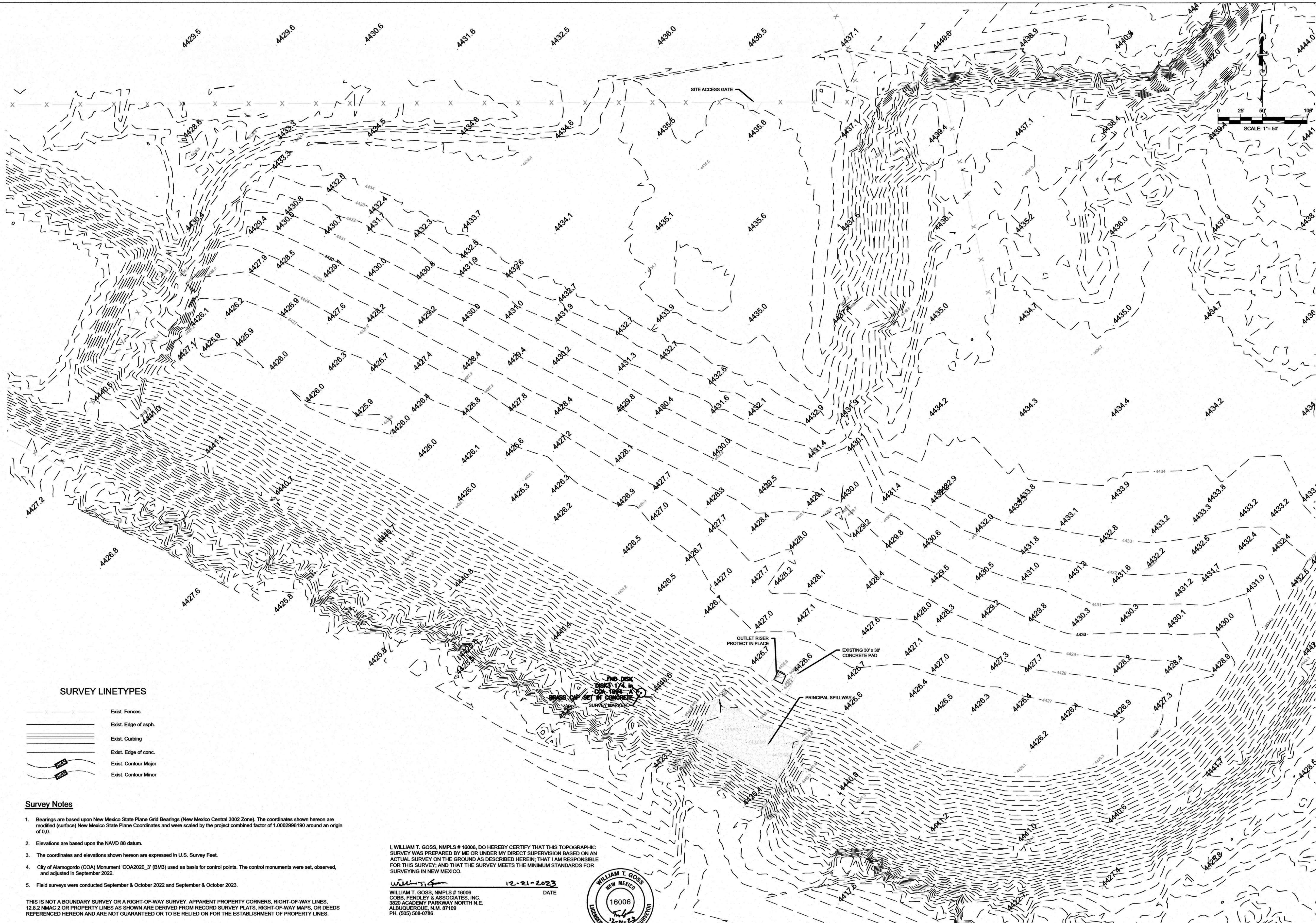


DRAINAGE BASINS SEDIMENT REMOVAL
GRIGGS BASIN
DRY CANYON ARROYO & GRIGGS BASIN
CHANNEL SECTIONS



CobbFendley
3820 Academy Parkway North NE
Albuquerque, NM 87109
505.508.0786 | Fax 505.308.0837 | www.cobbendley.com

DESIGN BY: CA
DRAWN BY: CRN
DATE: April 2024
JOB NUMBER: 2212-059-01
SHEET



SURVEY LINETYPES

- Exist. Fences
- Exist. Edge of asph.
- Exist. Curbing
- Exist. Edge of conc.
- Exist. Contour Major
- Exist. Contour Minor

Survey Notes

1. Bearings are based upon New Mexico State Plane Grid Bearings (New Mexico Central 3002 Zone). The coordinates shown hereon are modified (surface) New Mexico State Plane Coordinates and were scaled by the project combined factor of 1.0002986190 around an origin of 0,0.
2. Elevations are based upon the NAVD 88 datum.
3. The coordinates and elevations shown hereon are expressed in U.S. Survey Feet.
4. City of Alamogordo (COA) Monument 'COA2020_3' (BM3) used as basis for control points. The control monuments were set, observed, and adjusted in September 2022.
5. Field surveys were conducted September & October 2022 and September & October 2023.

THIS IS NOT A BOUNDARY SURVEY OR A RIGHT-OF-WAY SURVEY. APPARENT PROPERTY CORNERS, RIGHT-OF-WAY LINES, 12.8.2 NMAC 2 OR PROPERTY LINES AS SHOWN ARE DERIVED FROM RECORD SURVEY PLATS, RIGHT-OF-WAY MAPS, OR DEEDS REFERENCED HEREON AND ARE NOT GUARANTEED OR TO BE RELIED ON FOR THE ESTABLISHMENT OF PROPERTY LINES.

I, WILLIAM T. GOSS, NMPLS # 16006, DO HEREBY CERTIFY THAT THIS TOPOGRAPHIC SURVEY WAS PREPARED BY ME OR UNDER MY DIRECT SUPERVISION BASED ON AN ACTUAL SURVEY ON THE GROUND AS DESCRIBED HEREIN; THAT I AM RESPONSIBLE FOR THIS SURVEY; AND THAT THE SURVEY MEETS THE MINIMUM STANDARDS FOR SURVEYING IN NEW MEXICO.

William T. Goss
 WILLIAM T. GOSS, NMPLS # 16006
 COBB, FENDLEY & ASSOCIATES, INC.
 3820 ACADEMY PARKWAY NORTH N.E.
 ALBUQUERQUE, N.M. 87109
 PH. (505) 508-0786



NO.	DATE	COMMENT

REVISIONS

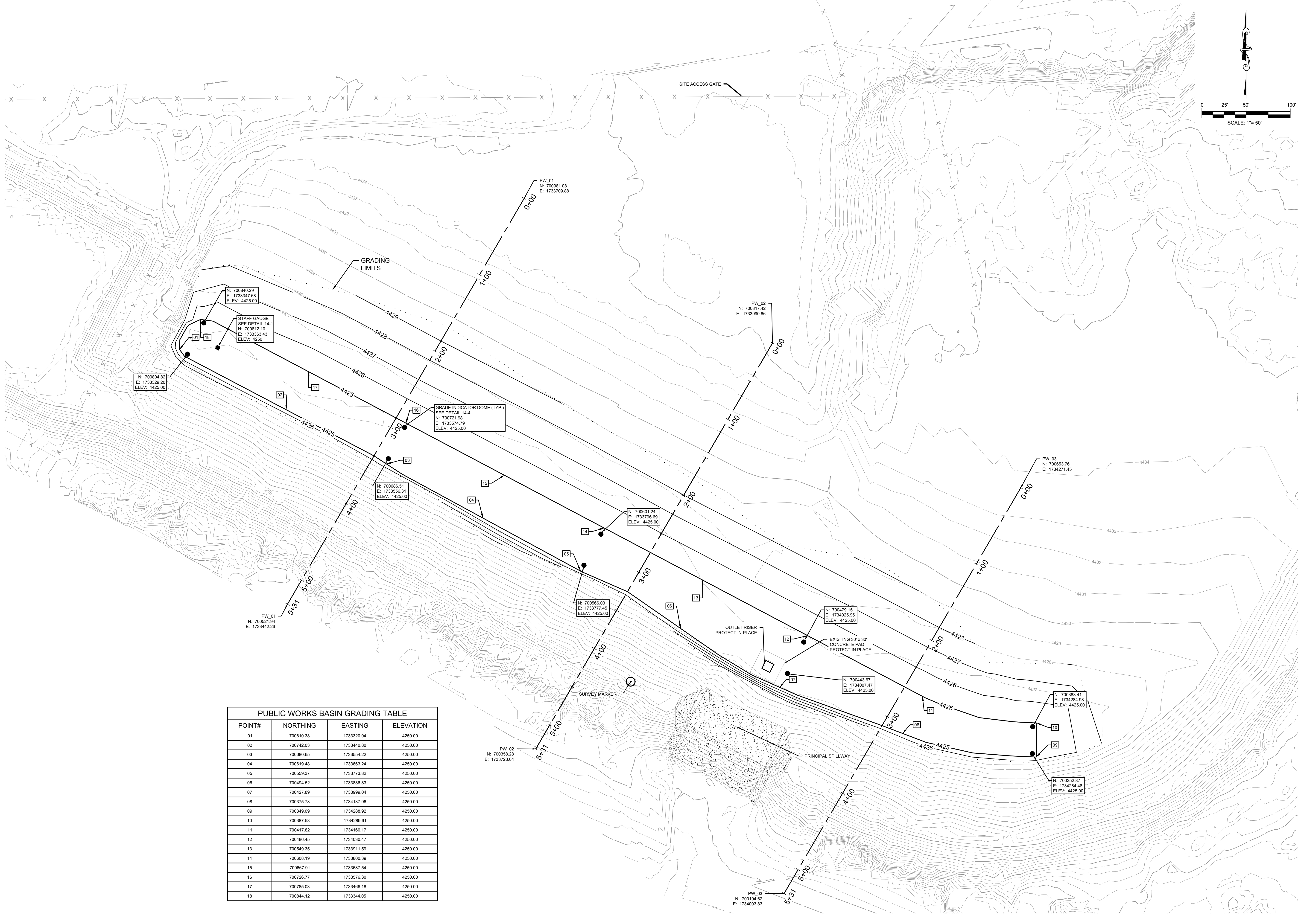
**DRAINAGE BASINS SEDIMENT REMOVAL
 PUBLIC WORKS BASIN
 EXISTING TOPOGRAPHY**



CobbFendley
 TBPELS Firm Registration No. 274
 Land Surveying Firm Registration No. 10046700
 3820 Academy Parkway North NE
 Albuquerque, NM 87109
 505.508.0786 | fax 505.508.0837 | www.cobbendley.com

DESIGN BY: CA
 DRAWN BY: CRN
 DATE: December 2023
 JOB NUMBER: 2212-059-01
 SHEET

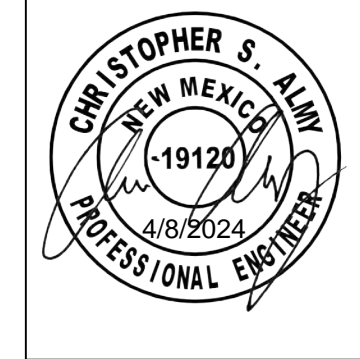
Dwg Info: C:\Projects\20221209_city_of_alamogordo\01_drainage_basins\00_CAD\412_Mun02_sheets\2212-069-01_PUBLICWORKSBASIN_PP.dwg - Plotted: 12/21/2023



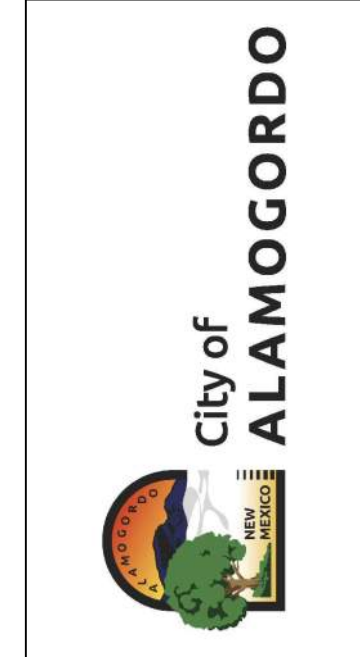
PUBLIC WORKS BASIN GRADING TABLE

POINT#	NORTHING	EASTING	ELEVATION
01	700810.38	173320.04	4250.00
02	700742.03	1733440.80	4250.00
03	700680.65	1733554.22	4250.00
04	700619.48	1733663.24	4250.00
05	700559.37	1733773.82	4250.00
06	700494.52	1733886.83	4250.00
07	700427.89	1733999.04	4250.00
08	700375.78	1734137.96	4250.00
09	700349.09	1734286.92	4250.00
10	700387.58	1734289.61	4250.00
11	700417.82	1734160.17	4250.00
12	700486.45	1734030.47	4250.00
13	700549.35	1733911.59	4250.00
14	700608.19	1733800.39	4250.00
15	700667.91	1733687.54	4250.00
16	700726.77	1733576.30	4250.00
17	700785.03	1733466.18	4250.00
18	700844.12	1733344.05	4250.00

NO.	DATE	COMMENT



**DRAINAGE BASINS SEDIMENT REMOVAL
PUBLIC WORKS BASIN
GRADING PLAN VIEW**

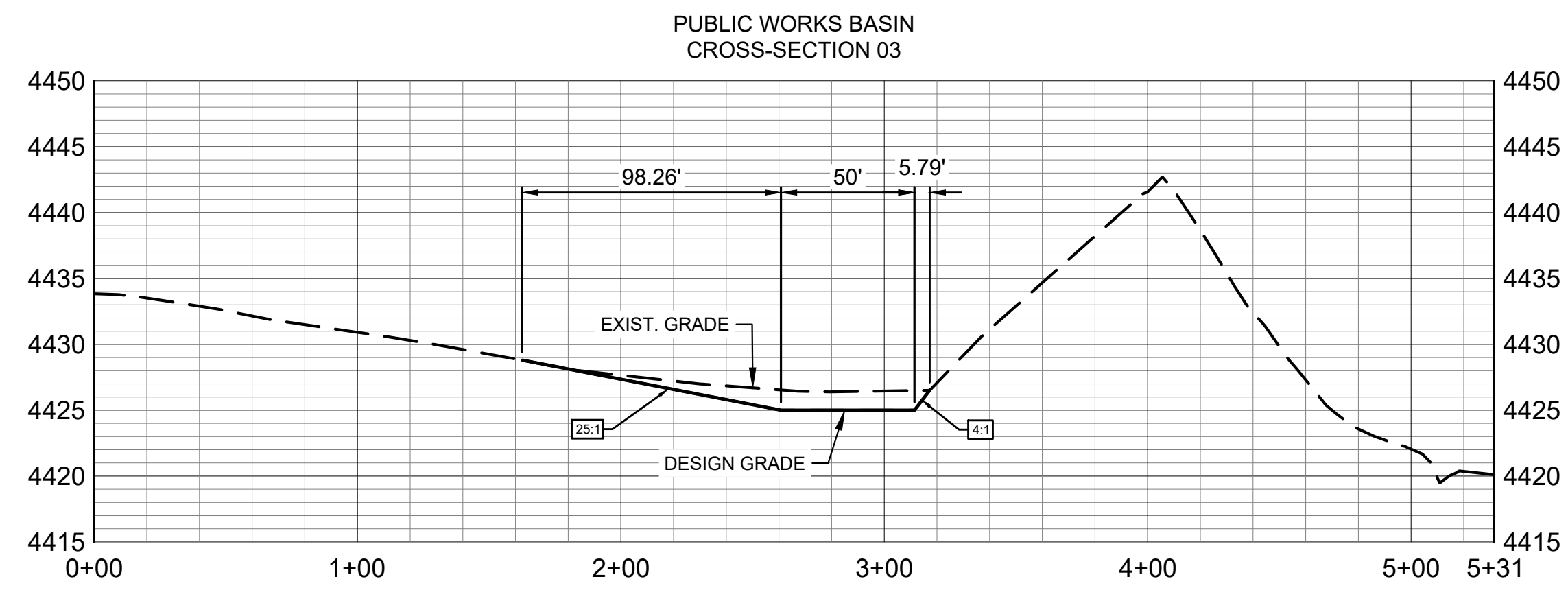
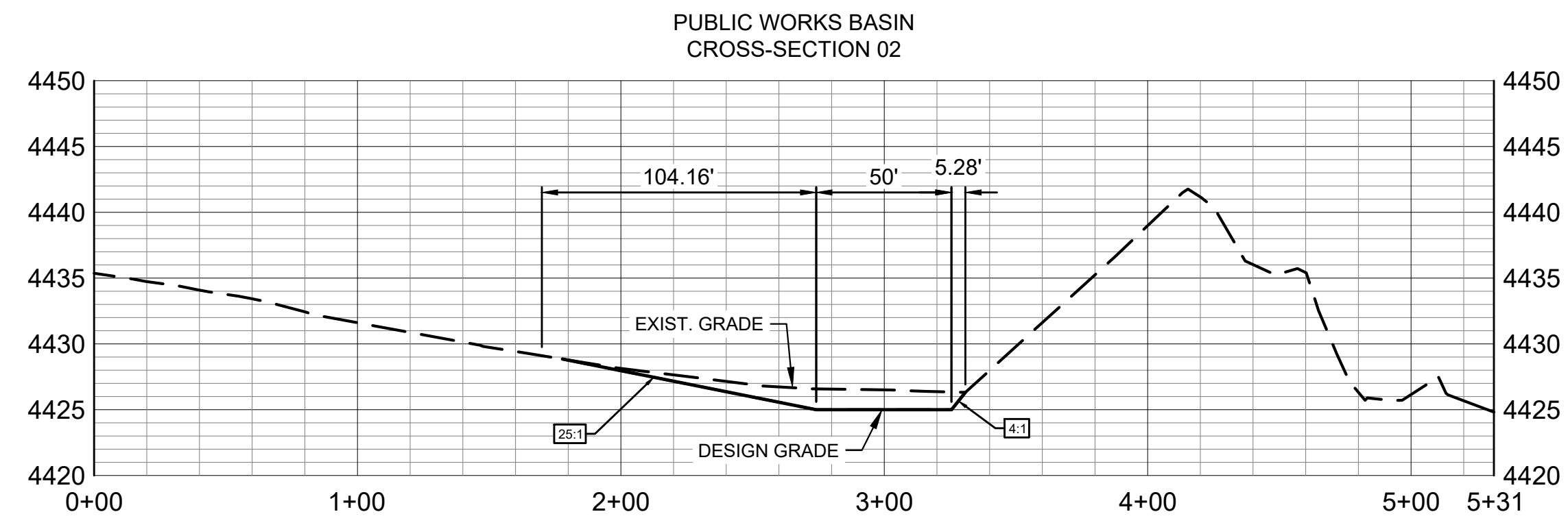
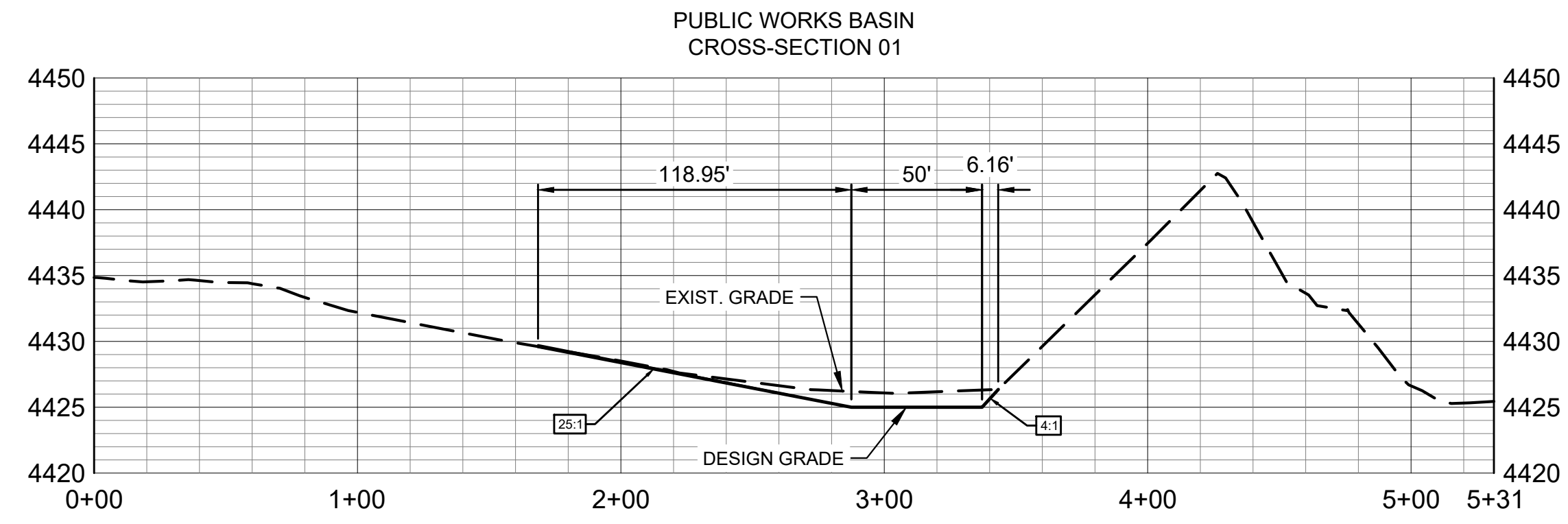
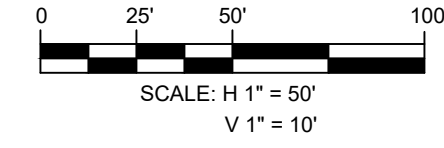


CobbFendley
3820 Academy Parkway North NE
Albuquerque, NM 87109
505.508.0786 | Fax 505.308.0837 | www.cobbendley.com

DESIGN BY: CA	DRAWN BY: CRN
DATE: April 2024	JOB NUMBER: 2212-059-01
SHEET	

Dwg Info: q:\Projects\2022\12052_cob_city_of_alamosordo\1_drainage_basins\00_CAD\12_Mun02_sheets\2212-059-01_PUBLICWORKSBASIN_PP.dwg - Plotter: 4/8/2024

Dwg Info: q:\Projects\22212052_city_of_alamogordo\1_drainage_basins\01_CAD\12_Mun02_sheets\2212-059-01_PUBLICWORKSBASIN_PP.dwg - Plotter: 4/8/2024



NO.	DATE	COMMENT



**DRAINAGE BASINS SEDIMENT REMOVAL
PUBLIC WORKS BASIN
SECTION**



CobbFendley

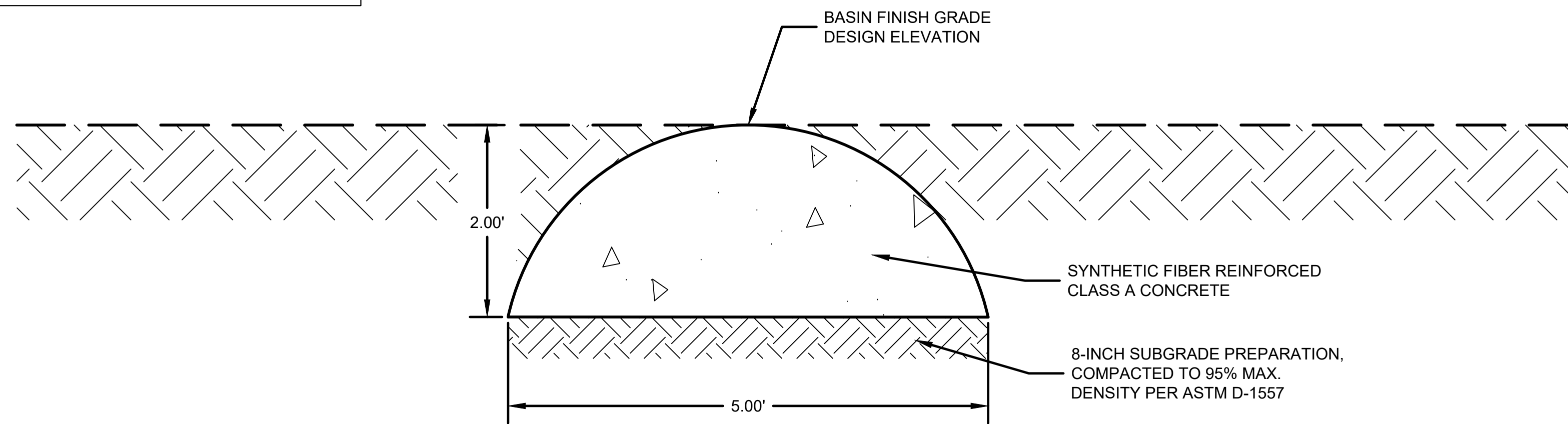
3820 Academy Parkway North NE
Albuquerque, NM 87109
505.508.0786 | Fax 505.308.0837 | www.cobbhendley.com

DESIGN BY: CA	DRAWN BY: CRN
DATE: April 2024	JOB NUMBER: 2212-059-01

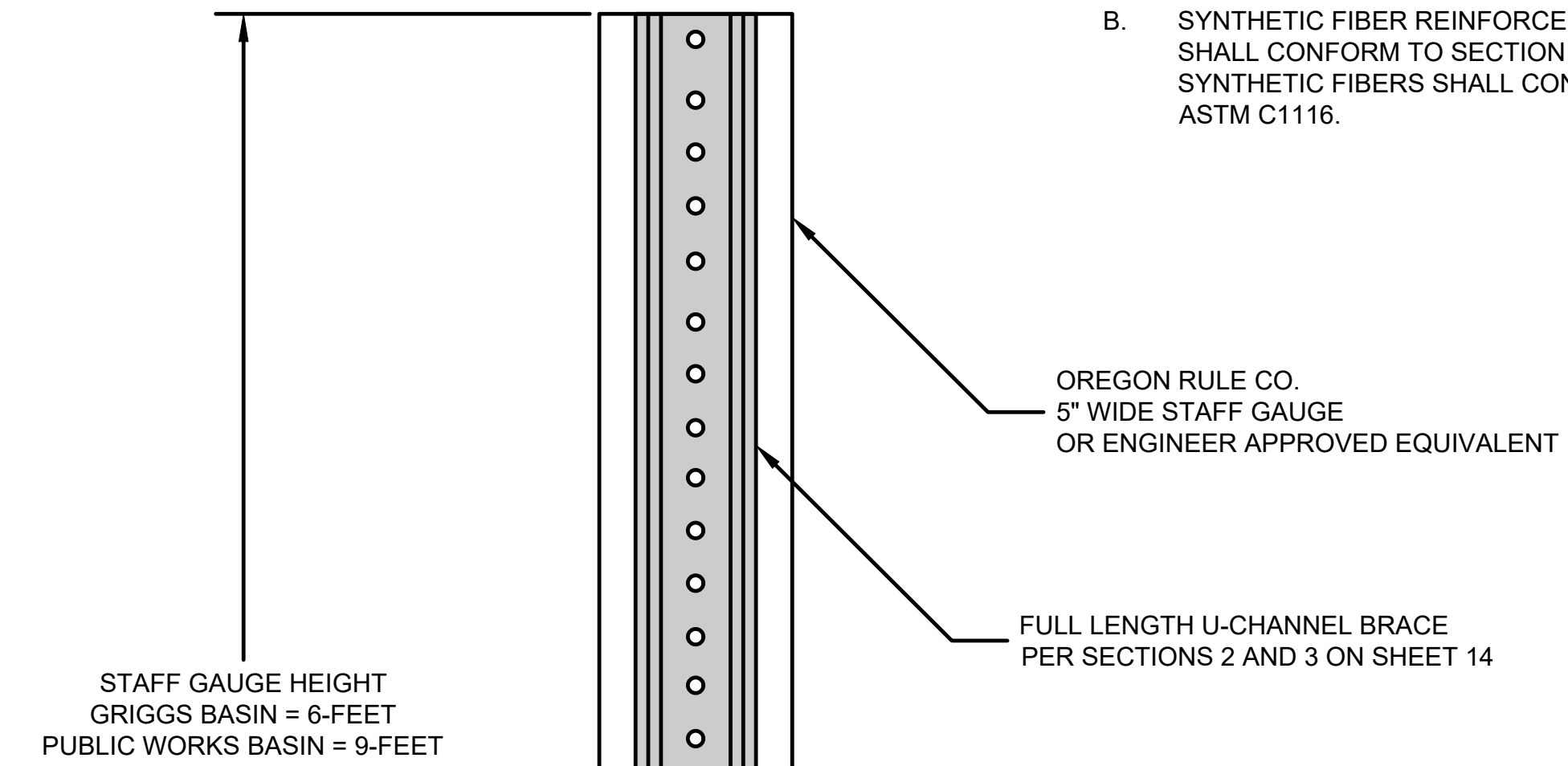
!!! WARNING !!!
 EXISTING UTILITIES IN THE AREA. CONTRACTOR SHALL FIELD VERIFY THE LOCATION OF ALL EXISTING UTILITIES WITH THE PROVIDER PRIOR TO START OF CONSTRUCTION AND SHALL IMMEDIATELY NOTIFY THE ENGINEER OF ANY CONFLICTS DISCOVERED. CONTRACTOR IS RESPONSIBLE FOR PROTECTING EXISTING UTILITIES (SHOWN OR NOT SHOWN). IF ANY EXISTING UTILITIES ARE DAMAGED, THE CONTRACTOR SHALL REPAIR THEM AT THEIR OWN EXPENSE.

CONSTRUCTION NOTES

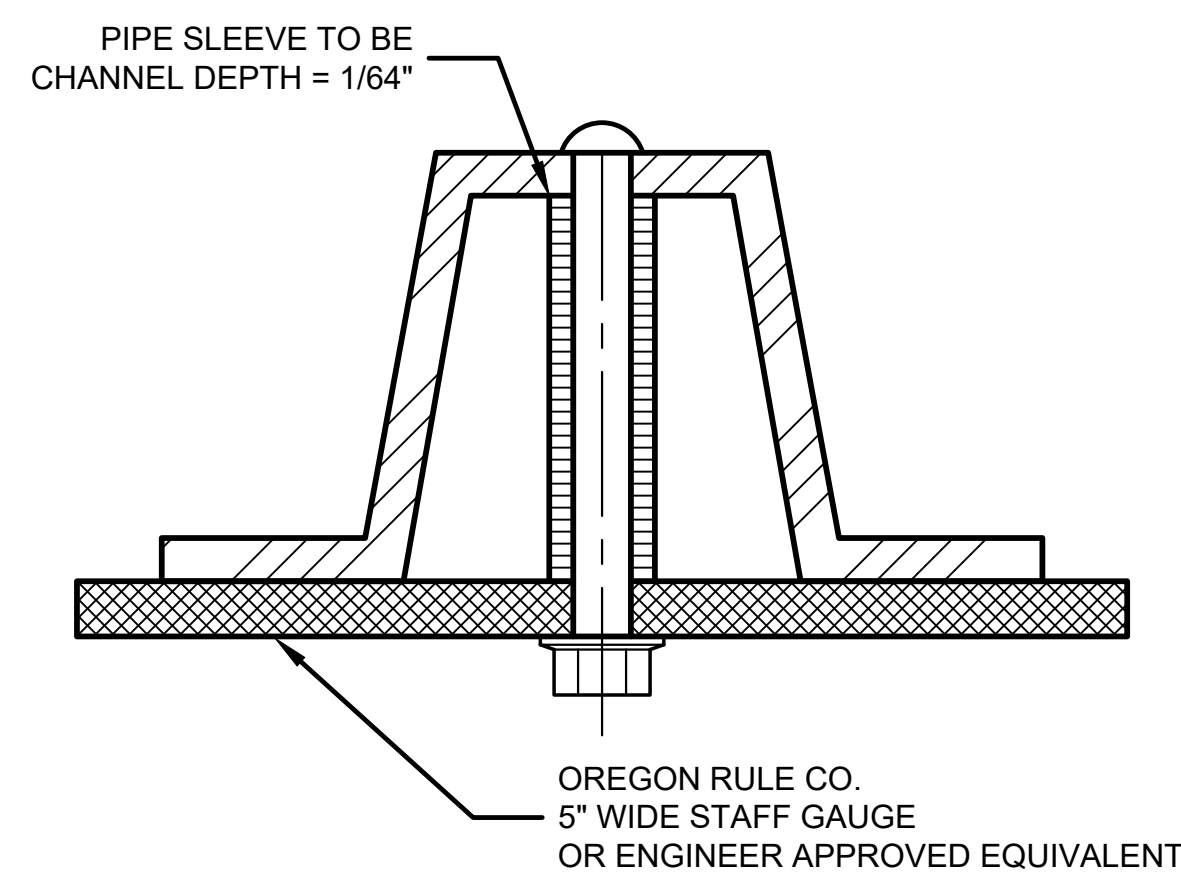
- A. CONCRETE SHALL CONFORM TO SECTION 510 - PORTLAND CEMENT CONCRETE IS TO BE CLASS "A".
- B. SYNTHETIC FIBER REINFORCEMENT SHALL CONFORM TO SECTION 509. SYNTHETIC FIBERS SHALL CONFORM TO ASTM C1116.



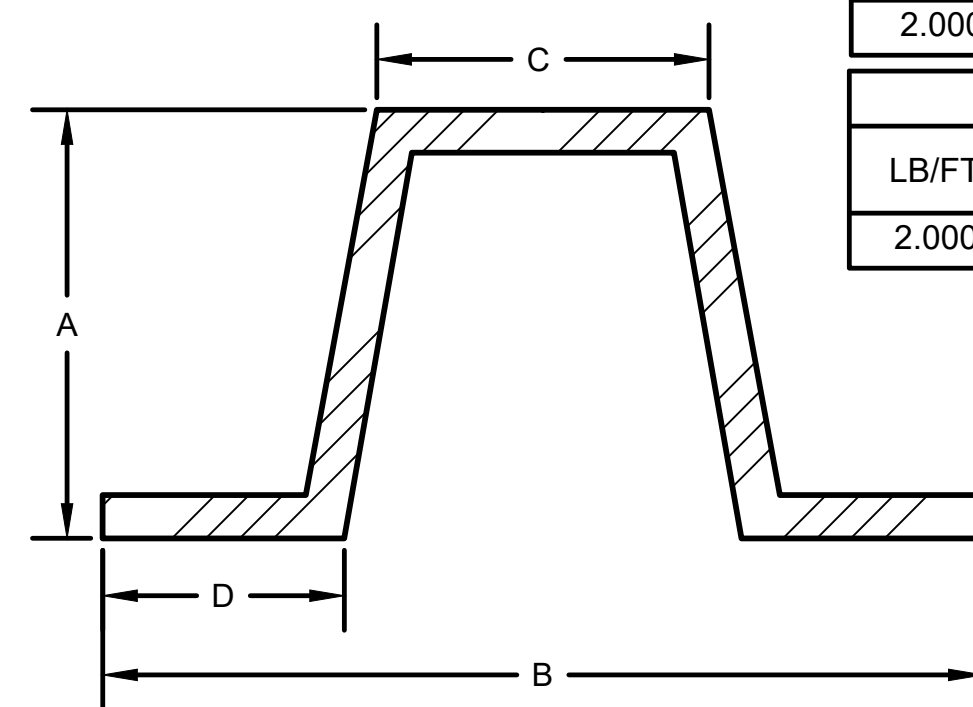
4 GRADE DOME INDICATOR DETAIL SECTION



1 STAFF GAUGE WITH FOUNDATION NTS



2 STAFF GAUGE MOUNT CROSS SECTION NTS



3 2 LB/FT U-CHANNEL POST DETAIL CROSS SECTION NTS

U-CHANNEL FRANKLIN				
LB/FT	"A" (INCHES)	"B" (INCHES)	"C" (INCHES)	"D" (INCHES)
2.000	1.516	3.125	1.250	0.625

U-CHANNEL MARION				
LB/FT	"A" (INCHES)	"B" (INCHES)	"C" (INCHES)	"D" (INCHES)
2.000	1.462	3.062	1.278	

NO.	DATE	COMMENT



DRAINAGE BASINS SEDIMENT REMOVAL TYPICAL DETAILS



CobbFendley
 3820 Academy Parkway North NE
 Albuquerque, NM 87109
 505.508.0786 | Fax 505.508.0837 | www.cobbendley.com

DESIGN BY: DRAWN BY:
 DATE: JOB NUMBER:
 SHEET

Dwg Info: q:\Projects\2022\12052_city_of_alamosordo\1_drainage_basins\400_CAD\12_Mun02_sheets\15 TYPICAL DETAILS.dwg - Plotter: 4/8/2024