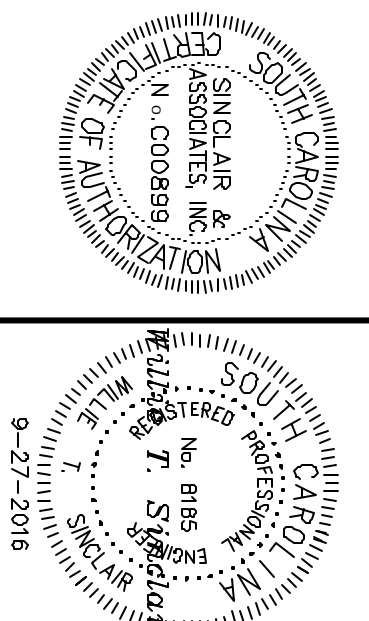




SINCLAIR & ASSOCIATES, INC.
P.O. BOX 1234
GREENVILLE, SC 29615
(864) 998-1001 FAX: (864) 998-1011

NOTICE
THIS DRAWING IS THE PROPERTY OF SINCLAIR & ASSOCIATES, INC. IT IS TO BE USED ONLY FOR THE PROJECT AND SITE SPECIFICALLY IDENTIFIED HEREON. ANY REUSE, REPRODUCTION, OR MODIFICATION OF THIS DRAWING WITHOUT THE WRITTEN AUTHORIZATION OF SINCLAIR & ASSOCIATES, INC. IS PROHIBITED. PERMISSION TO REPRODUCE THIS DRAWING FOR ANY OTHER PROJECT IS NOT GRANTED. PERMISSION TO REPRODUCE THIS DRAWING FOR ANY OTHER PROJECT IS NOT GRANTED. PERMISSION TO REPRODUCE THIS DRAWING FOR ANY OTHER PROJECT IS NOT GRANTED.



CITY OF GREER BRUSHY CREEK ROAD SIDEWALK PROJECT

NO.	REVISION	DATE	BY
0	ISSUED FOR CONSTRUCTION	9-27-16	EFA
1	ISSUED FOR REVIEW	9-9-16	EFA

COVER SHEET

BRUSHY CREEK ROAD
SIDEWALK PROJECT DRAWINGS

GREENVILLE COUNTY,
SOUTH CAROLINA

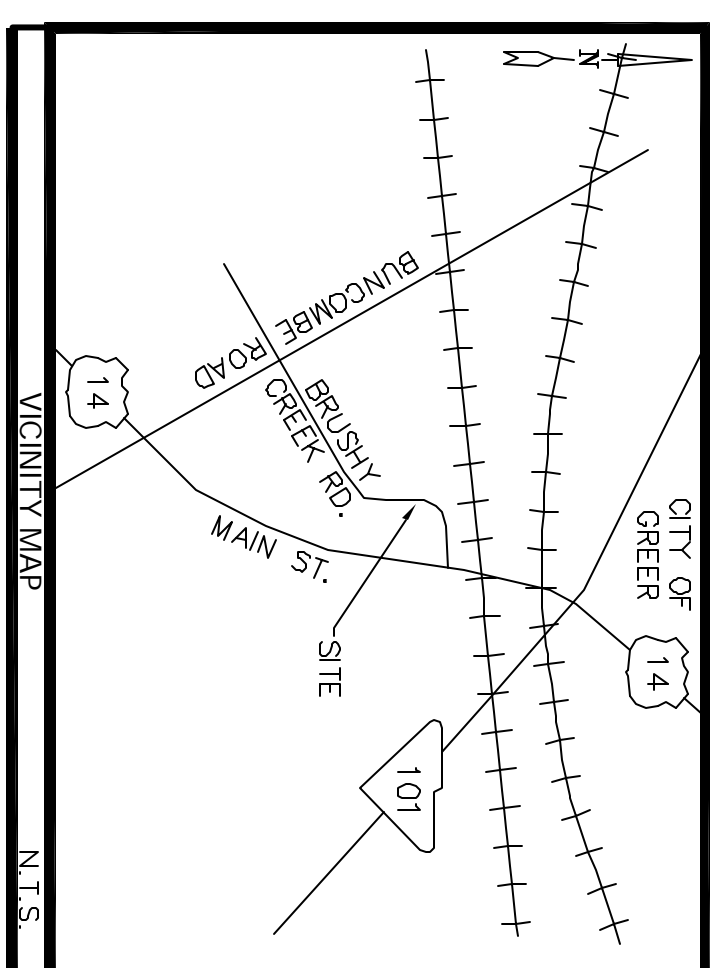
DATE: 01/11/2016 APPROVED BY: WTS
DRAWN BY: EFA
CHECKED BY: WTS
DRAWN BY: JRS

PROJECT NO: 2361

C-1

PAT#: c:\pms\old\mohand\2016\2361\c4.dwg
© 2016 SINCLAIR & ASSOCIATES, INC.

CITY OF GREER S-166 BRUSHY CREEK ROAD SIDEWALK PROJECT GREER, SOUTH CAROLINA



LEGEND

EXISTING	NEW
PROPERTY LINE	PROPERTY LINE
EASEMENT	EASEMENT
SETBACK	SETBACK
CONTOUR LINE	CONTOUR LINE
SPOT ELEVATION	SPOT ELEVATION
DEMOLISH	DEMOLISH
SIDEWALK	SIDEWALK
ASPHALT PAVEMENT	ASPHALT PAVEMENT
CONCRETE PAVEMENT	CONCRETE PAVEMENT
CURB AND GUTTER	CURB AND GUTTER
SIGN	SIGN
TREE LINE	TREE LINE
CHAIN LINK FENCE	CHAIN LINK FENCE
CATCH BASIN	CATCH BASIN
STORM DRAIN	STORM DRAIN
RIPPRAP	RIPPRAP
SANITARY SEWER LINE	SANITARY SEWER LINE
SANITARY SEWER MANHOLE	SANITARY SEWER MANHOLE
GAS LINE	GAS LINE
DOMESTIC WATER LINE	DOMESTIC WATER LINE
WATER METER	WATER METER
WATER VALVE	WATER VALVE
TELEPHONE BOX	TELEPHONE BOX
LIGHT POLE	LIGHT POLE
OVERHEAD ELECTRIC	OVERHEAD ELECTRIC
FIRE HYDRANT	FIRE HYDRANT

PROJECT NARRATIVE:

THE PROPOSED WORK IS THE REPLACEMENT OF EXISTING DAMAGED SIDEWALK AND EXTENSION OF NEW SIDEWALK FROM U.S. HWY. 14, MAIN STREET, GREER, WEST ALONG BRUSHY CREEK ROAD TO CENTURY PARK. THE PROJECT IS ANTICIPATED TO DISTURB APPROX. 0.5 ACRES OF 10' WIDE CONSTRUCTION OF 420 LF OF SIDEWALK. SETBACKS AND EASEMENTS WILL BE MAINTAINED. ALL UTILITIES ARE TO BE PROTECTED FROM SEDIMENT BY SILT FENCING AND OTHER BEST MANAGEMENT PRACTICES. MATERIALS DEMOLISHED BY THE WORK AS WELL AS SOIL DISPLAYED BY THE WORK ARE TO BE DISPOSED OF OFF-SITE IN APPROVED LANDFILLS. PROVIDE AND MAINTAIN PORTABLE CONCRETE WASHOUT UNIT.

SHEET INDEX

- C-1 COVER SHEET
- C-2 PLAN SHEET 1
- C-3 PLAN SHEET 2
- C-4 PLAN SHEET 3
- C-5 DETAILS AND SPECIFICATIONS
- C-6 NOTES AND SPECIFICATIONS
- C-7 SEDIMENT AND EROSION CONTROL DETAILS

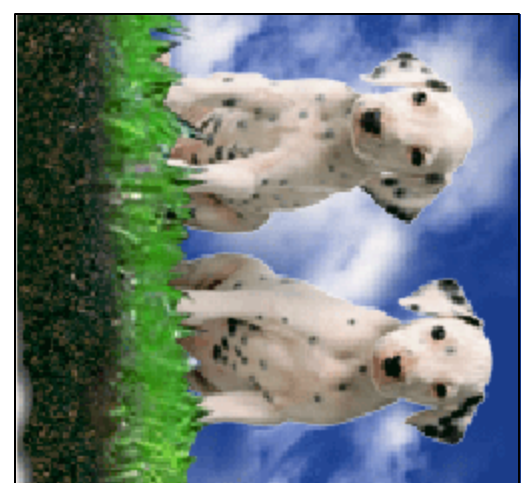


NOTES

- THIS PROJECT IS LOCATED BETWEEN U.S. HWY 14 & BINCOMBE ROAD OWNER/DEVELOPER: CITY OF GREER 301 PONSSETT STREET GREER, SC 29651 PHONE: 864-449-2150 CONTRACTOR: STEVE GRANT ENGINEER/SURVEYOR: SINCLAIR & ASSOCIATES, INC. POST OFFICE BOX 1344 DUNCAN, SC 29334 PHONE: 864-949-0981 CONTRACT: WILLET T. SINCLAIR (TOM)
- THE RECORD DRAWINGS WERE PRODUCED USING ABOVE GROUND INFORMATION GATHERED THROUGH FIELD SURVEYS BY SINCLAIR & ASSOCIATES, INC.
- HORIZONTAL DATUM BASED ON SOUTH CAROLINA GRID - NAD-83.
- VERTICAL DATUM BASED ON NAVD-88.
- NO WORK SHALL BEGIN ON THIS PROPERTY UNTIL ALL PERMITS HAVE BEEN ISSUED.
- THIS PROPERTY IS SUBJECT TO ALL EASEMENTS, RIGHTS OF WAY, AND RESTRICTIONS BOTH RECORDED AND UNRECORDED.
- DISTURBED AREA IS LOCATED IN FLOOD ZONE "X". AREAS DETERMINED TO BE OUTSIDE THE 0.2% ANNUAL CHANCE FLOODPLAIN, AS DEFINED BY THE "FLOOD INSURANCE RATE MAP OF AUGUST 18, 2014", COMMUNITY PANEL # 4504500361E, UNLESS OTHERWISE NOTED.
- PERFORM ALL WORK IN ACCORDANCE WITH SDDOT SPECIFICATIONS AND PERMITTING AND AS APPROVED BY THE CITY.
- PROVIDE SEDIMENT AND EROSION CONTROL FOR THE DURATION OF THE WORK TO PREVENT THE TRACKING OF SEDIMENT ONTO PAVEMENT.

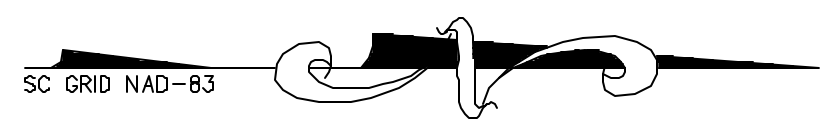
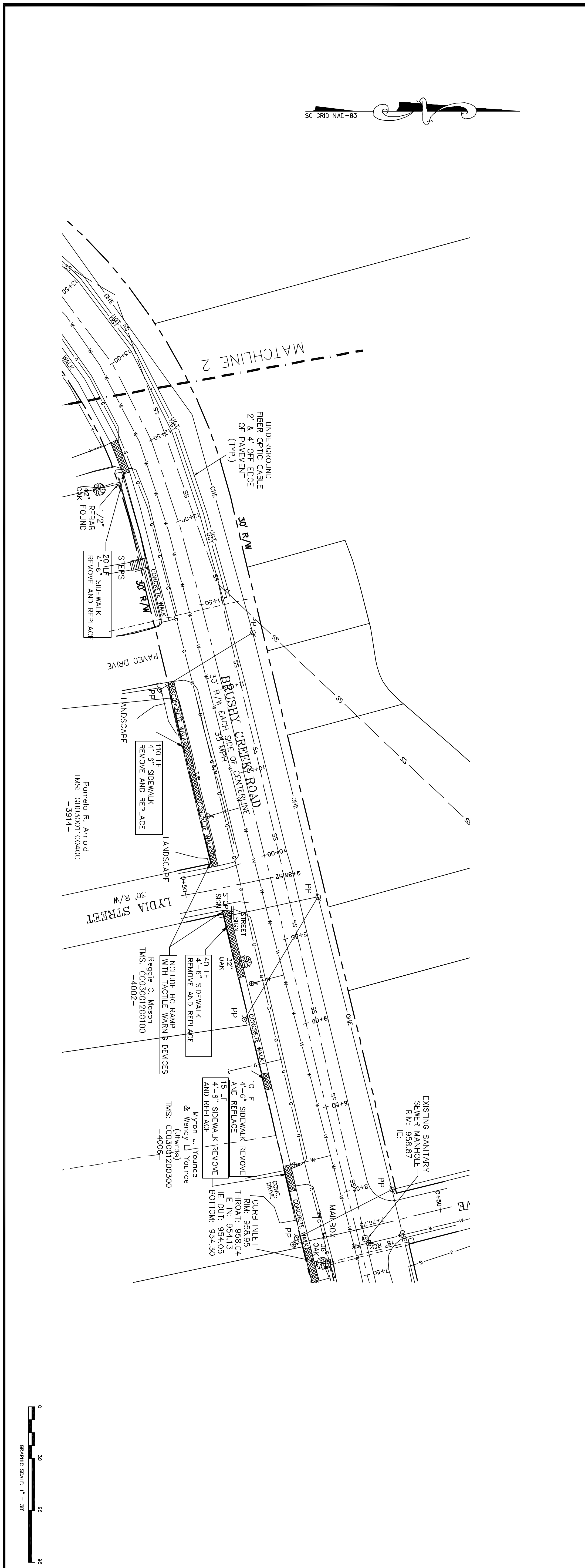
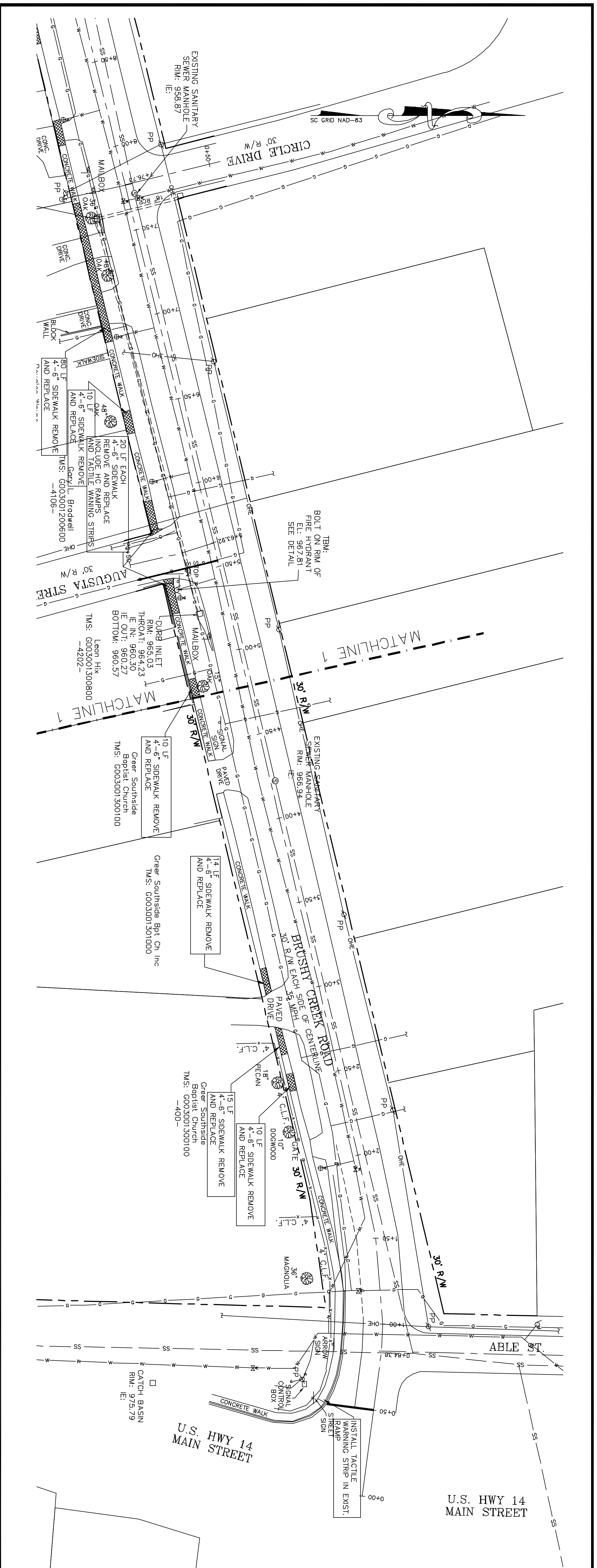
SITE DATA TABLE	0.5 AC
DISTURBED AREA	70 CV
SOIL EXPORT	

CERTIFICATION STATEMENT
I, _____, CERTIFY THAT THE LAND DISTURBANCE ACTIVITY WILL BE ACCOMPLISHED TO THE PLAN APPROVED BY THE CITY OF GREER AND SDDHEC.
ACKNOWLEDGE AS THE PROPERTY OWNER AND PERSON ULTIMATELY RESPONSIBLE FOR THE LAND DISTURBING ACTIVITY AT THIS SITE. THE RIGHT OF THE CITY OF GREER OR SDDHEC TO CONDUCT ON-SITE INSPECTIONS.



1-888-SC1-PUPS
(1-888-721-7877)
PALMETTO
UTILITY
PROTECTION
SERVICE,
INC.
www.sc1pups.org

THE UTILITIES ARE SHOWN FOR THE CONTRACTOR'S CONVENIENCE ONLY. THERE MAY BE OTHER UTILITIES NOT SHOWN ON THESE PLANS. SINCLAIR & ASSOCIATES, INC. ASSUMES NO RESPONSIBILITY TO VERIFY THE ACCURACY OF THE UTILITIES SHOWN AND IT SHALL BE THE CONTRACTOR'S SOLE RESPONSIBILITY TO VERIFY THE LOCATIONS OF ALL UTILITIES WITHIN THE LIMITS OF THE WORK. ALL DOWNSHIFT UTILITIES SHALL BE THE CONTRACTOR'S RESPONSIBILITY. THE CONTRACTOR SHALL BE THE SOLE RESPONSIBILITY OF THE CONTRACTOR.



CITY OF GREER BRUSHY CREEK ROAD SIDEWALK PROJECT

NO.	REVISION	DATE	BY
0	ISSUED FOR CONSTRUCTION	9-27-16	EFA
A	ISSUED FOR REVIEW	9-6-16	EFA

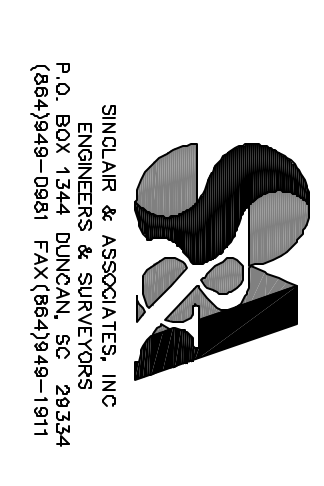
PLAN SHEET 1

BRUSHY CREEK ROAD
SIDEWALK PROJECT DRAWINGS
GREENVILLE COUNTY,
SOUTH CAROLINA

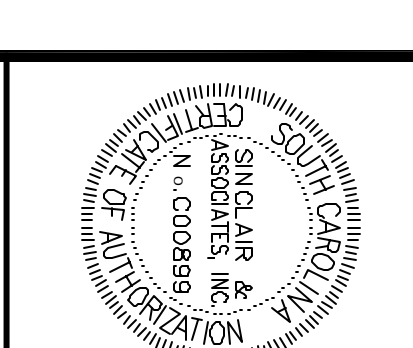
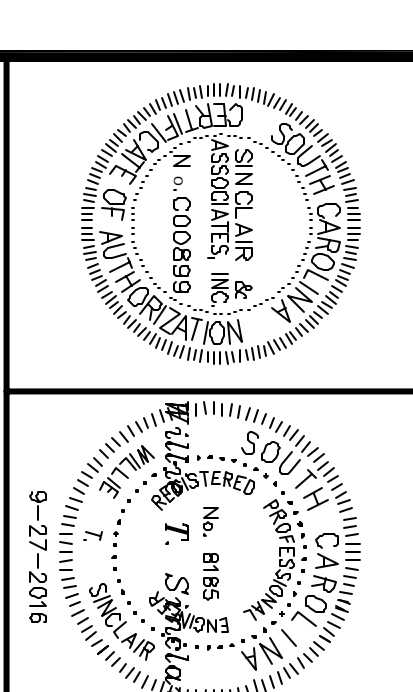
DATE: 01/11/2016 APPROVED BY: WTS
 DRAWN BY: EFA CHECKED BY: WTS
 PROJECT NO: 2361

C-2

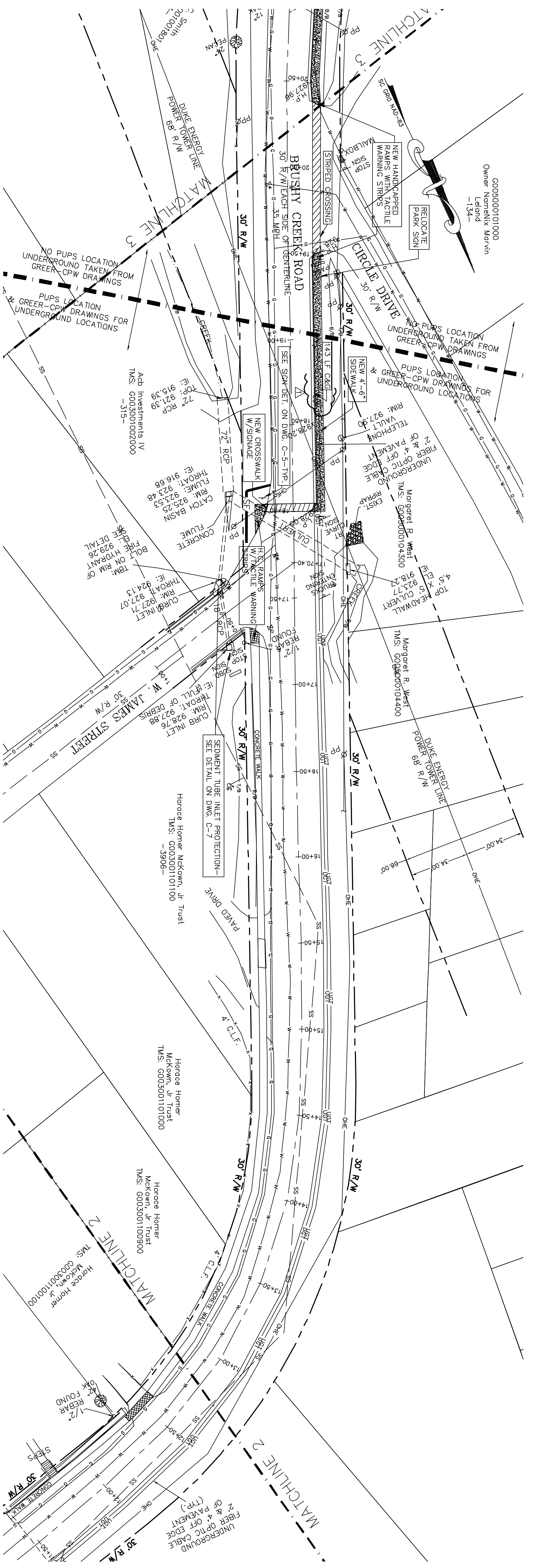
PATh: c:\xms old projects\2361\2361.dwg
 © 2016 SINGLAR & ASSOCIATES, INC



NOTICE: THIS DRAWING IS THE PROPERTY OF SINGLAR & ASSOCIATES, INC. IT IS TO BE USED ONLY FOR THE PROJECT AND SITE SPECIFICALLY IDENTIFIED HEREON. ANY REUSE, REPRODUCTION, OR MODIFICATION OF THIS DRAWING WITHOUT THE WRITTEN AUTHORIZATION OF SINGLAR & ASSOCIATES, INC. IS STRICTLY PROHIBITED. A PROFESSIONAL SEAL AND SIGNATURE ARE REQUIRED FOR THIS SPECIFIC PROJECT.



Owner: Normanix Marvin
 Leland
 -134-



CITY OF GREER BRUSHY CREEK ROAD SIDEWALK PROJECT

NOTICE
 THIS DRAWING IS THE PROPERTY OF SINGLAR & ASSOCIATES, INC. IT IS TO BE CHANGED WITHOUT WRITTEN AUTHORIZATION BY SINGLAR & ASSOCIATES, INC. ANY REVISIONS TO THIS DRAWING SHALL BE MADE BY SINGLAR & ASSOCIATES, INC. OR ITS ENGINEERS. ANY OTHER REVISIONS SHALL BE MADE BY THE ENGINEER OF RECORD. ANY REVISIONS MADE BY OTHERS WITHOUT THE WRITTEN AUTHORIZATION OF SINGLAR & ASSOCIATES, INC. SHALL BE AT THE USER'S SOLE RISK AND WITHOUT LIABILITY TO SINGLAR & ASSOCIATES, INC.

SINGLAR & ASSOCIATES, INC.
 ENGINEERS & SURVEYORS
 10449-104th
 FARMERSVILLE, NC 27534
 (919) 924-1044 FAX: (919) 924-1011

SOUTH CAROLINA PROFESSIONAL ENGINEER
 No. 8180
 William T. Singlar
 1-2-2017

NO.	REVISION	DATE	BY
1	ADDED CURB REINFORCED SIDEWALK LOCATION. REV. PER REVIEW	1-2-17	EFA
0	ISSUED FOR CONSTRUCTION	9-27-16	EFA
A	ISSUED FOR REVIEW	9-9-16	EFA

PLAN SHEET 2

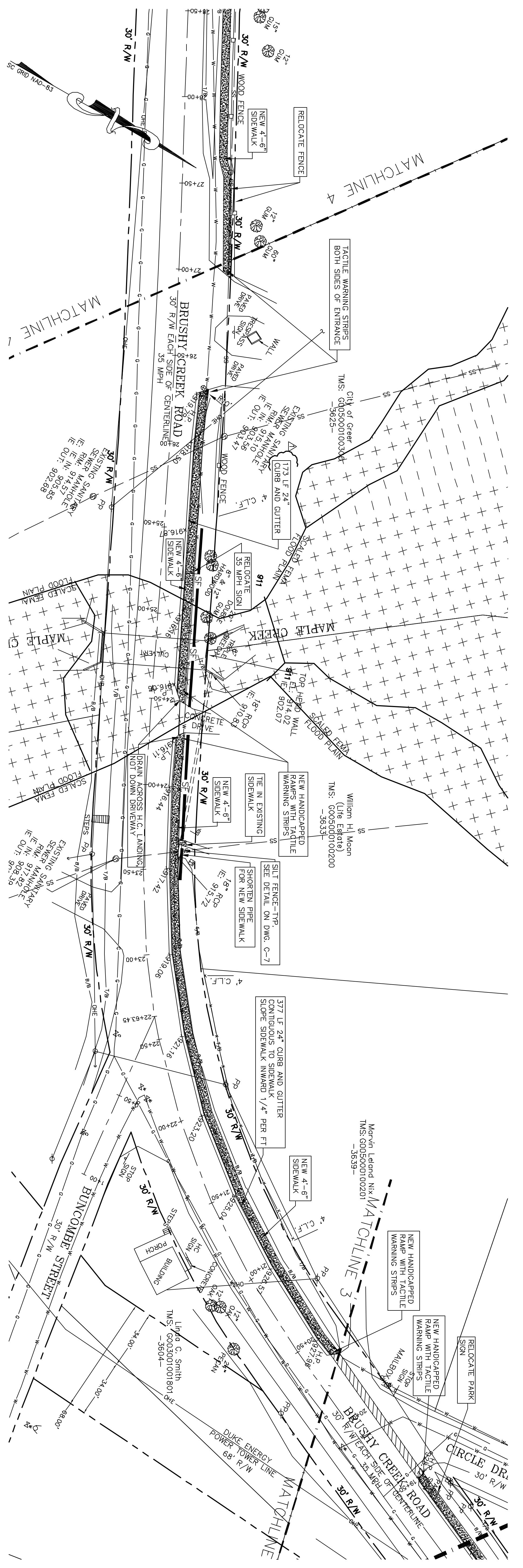
**BRUSHY CREEK ROAD
 SIDEWALK PROJECT DRAWINGS**
 GREENVILLE COUNTY,
 SOUTH CAROLINA

DATE: 01/11/2016 APPROVED BY: WTS
 DRAWN BY: EFA
 CHECKED BY: WTS
 PROJECT NO: 2361

C-3



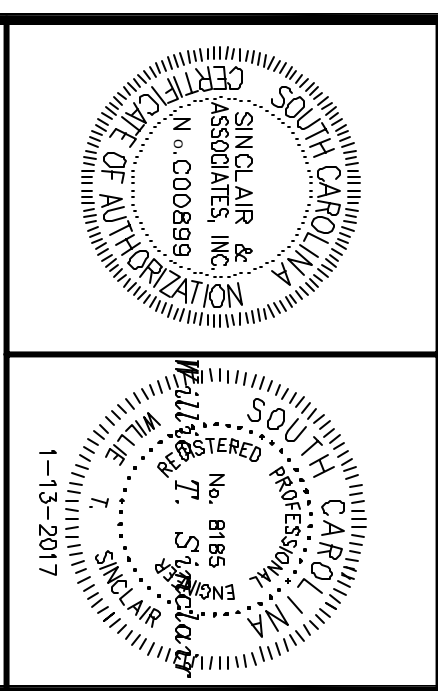
PAT: f.v. vado
 © 2016 SINGLAR & ASSOCIATES, INC.





SINCLAIR & ASSOCIATES, INC.
P.O. BOX 1234
GREENVILLE, SOUTH CAROLINA 29602
(864) 999-1001 FAX: (864) 999-1001

NOTICE: THIS DRAWING IS THE PROPERTY OF SINCLAIR & ASSOCIATES, INC. IT IS TO BE CHANGED WITHOUT WRITTEN AUTHORIZATION BY SINCLAIR & ASSOCIATES, INC. ANY REVISIONS TO THIS DRAWING SHALL BE MADE BY SINCLAIR & ASSOCIATES, INC. OR ANOTHER ENGINEER AS REQUIRED FOR THIS SPECIFIC PROJECT.



CITY OF GREER BRUSHY CREEK ROAD SIDEWALK PROJECT

NO.	REVISION	DATE	BY
1	REVISION	1-13-17	EFA
2	REVISION	1-2-17	EFA
0	ISSUED FOR CONSTRUCTION	9-27-16	EFA
A	ISSUED FOR REVIEW	9-6-16	EFA

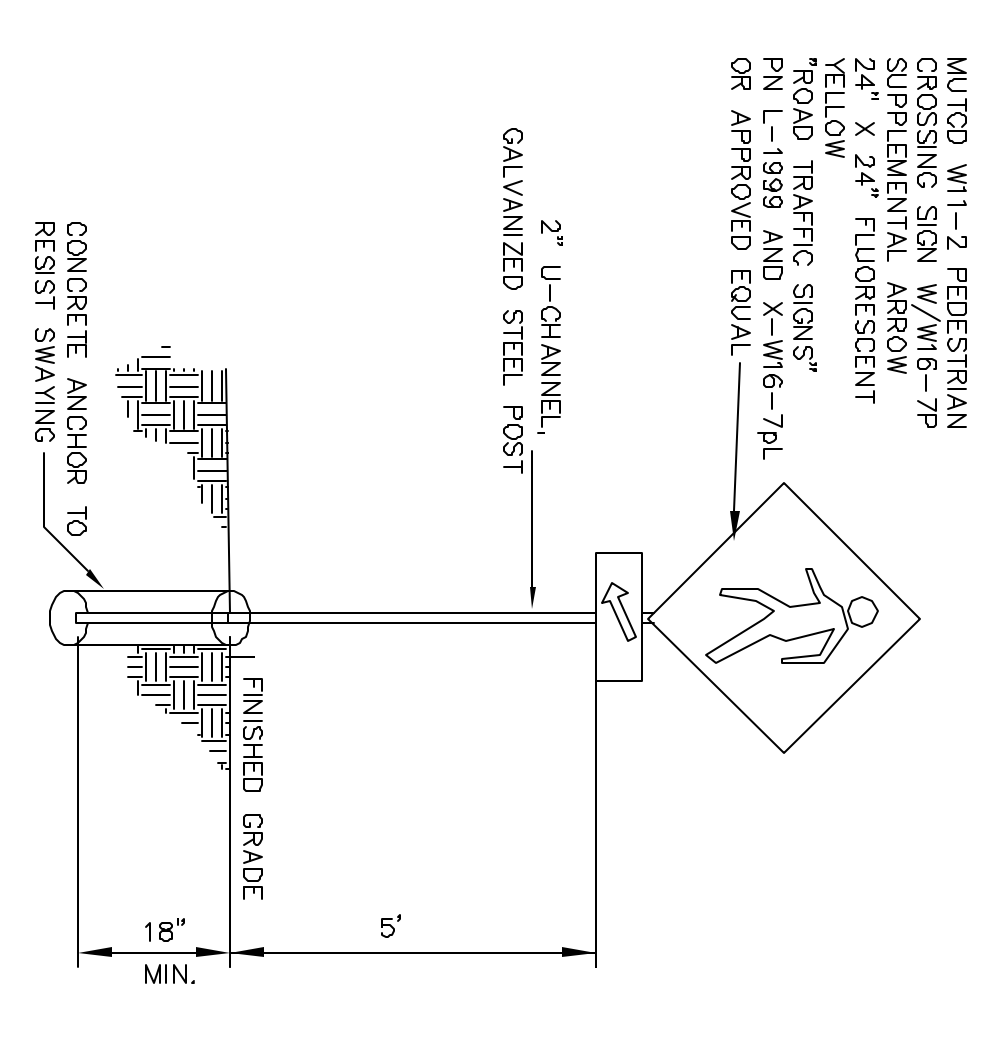
DETAILS AND SPECIFICATIONS

BRUSHY CREEK ROAD
SIDEWALK PROJECT DRAWINGS
GREENVILLE COUNTY,
SOUTH CAROLINA

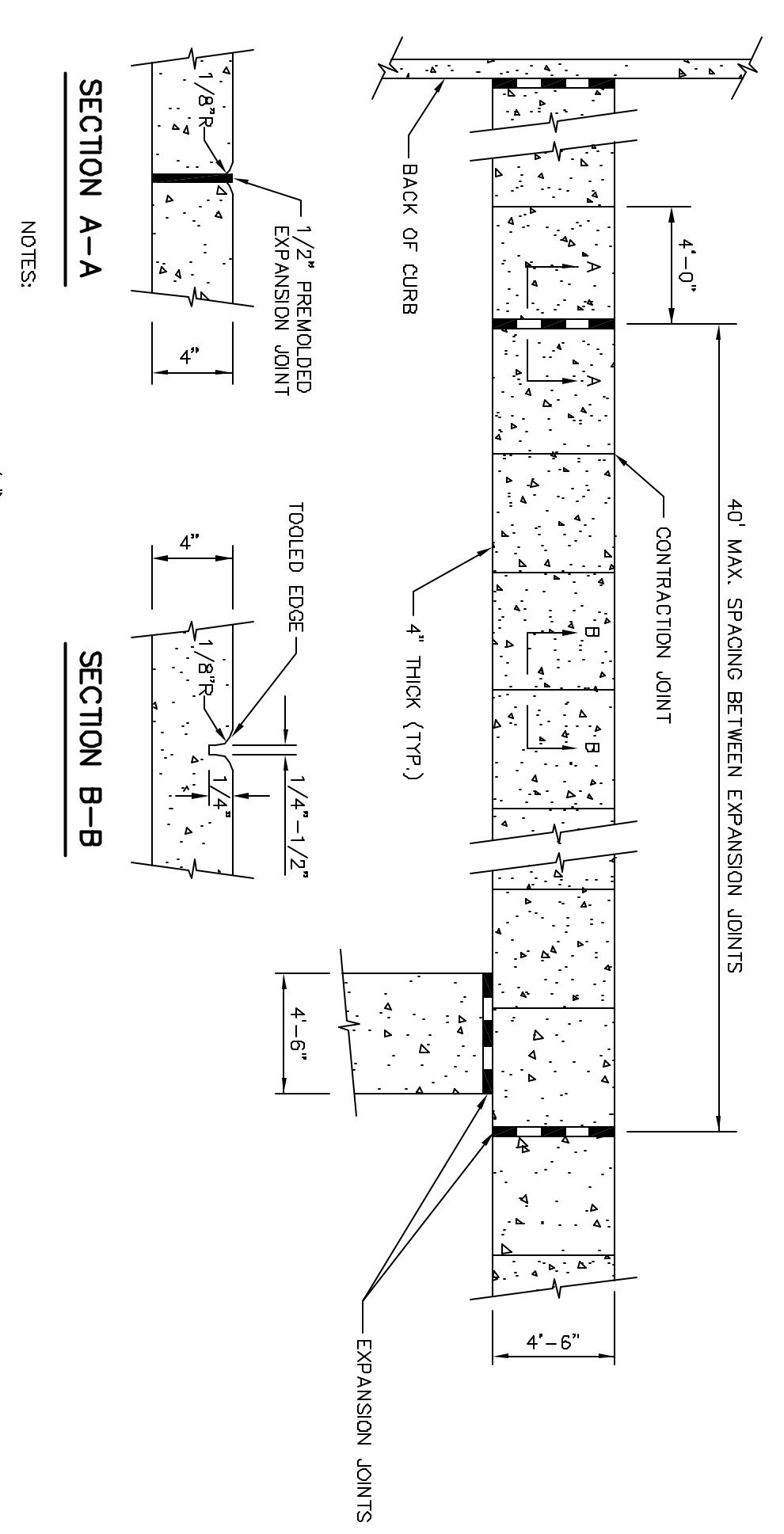
DATE: 01/11/2016 APPROVED BY: WTS
DRAWN BY: EFA CHECKED BY: WTS
PROJECT NO: 2361

C-5

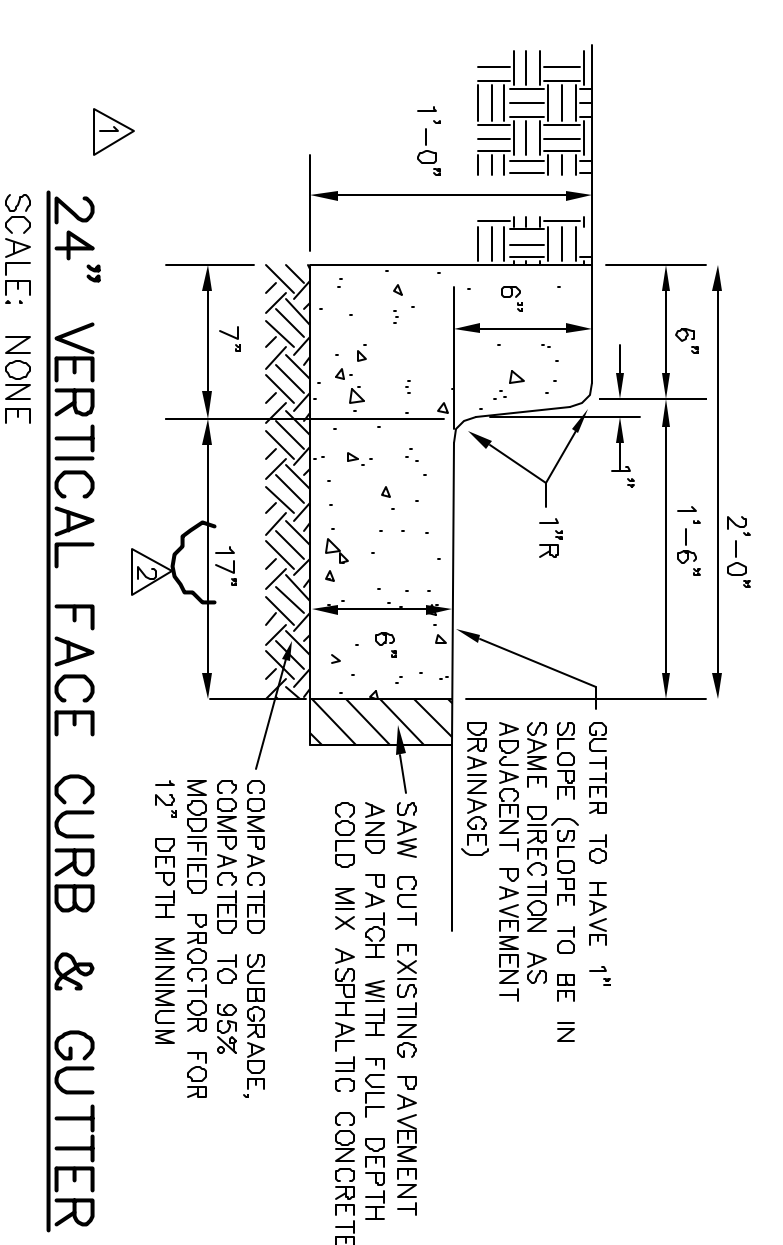
PATH: c:\xms old projects\2016\2361\c4.dwg
© 2016 SINCLAIR & ASSOCIATES, INC.



CROSSING SIGN DETAIL
SCALE: NONE

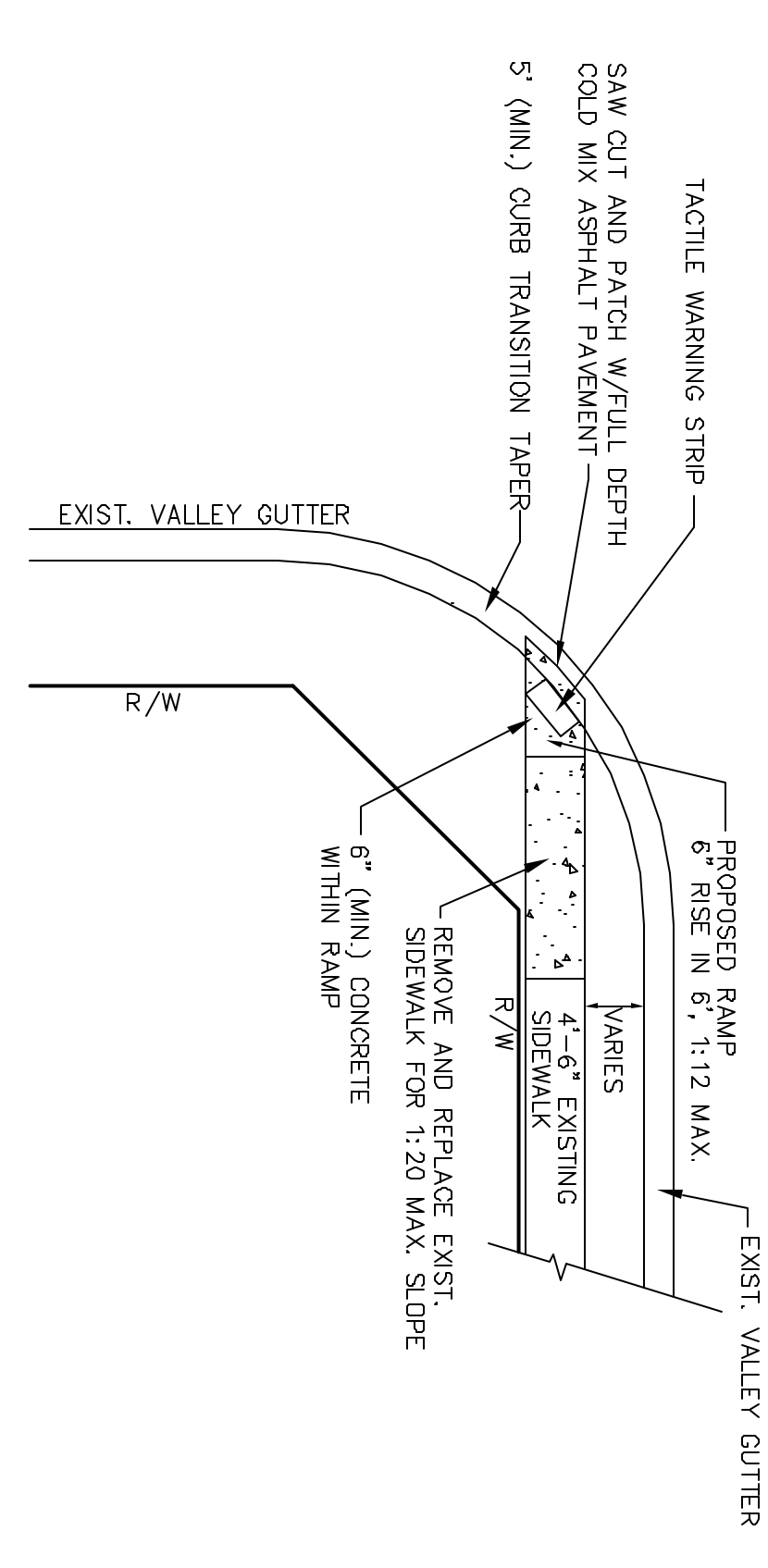


- CONCRETE SIDEWALK DETAIL**
SCALE: NONE
- EXPANSION JOINTS: 3/4" THICK, SHALL BE PLACED AT THE POINT OF ALL CURVES AT THE OUTER EDGES OF DRIVEWAYS AND AT UNIFORM INTERVALS AS SHOWN.
 - CONCRETE SHALL BE "READY MIX" HAVING A 28-DAY COMPRESSIVE STRENGTH OF 3000 PSI AND 5% AIR ENTRAINMENT.
 - FORMS SHALL BE INSPECTED BY THE CITY REPRESENTATIVE FOR PROPER GRADE AND ALIGNMENT BEFORE PLACING CONCRETE.
 - SIDEWALK THICKNESS SHALL BE 6" WHERE EXISTING DRIVEWAYS ARE CROSSED.



24" VERTICAL FACE CURB & GUTTER
SCALE: NONE

- DEMOLISH SIDEWALKS AND STRUCTURES OR OTHER ITEMS SHOWN FOR DEMOLITION. SAW CUT PAVEMENTS OR REMOVE TO THE NEAREST JOINT OUTSIDE THE DEMOLITION AREA. PROTECT ADJACENT AREAS FROM DAMAGE DURING DEMOLITION. DISPOSE OF ALL DEMOLISHED MATERIALS PROPERLY OFF-SITE. VERIFY THAT HAZARDOUS MATERIALS ARE NOT PRESENT IN DEMOLISHED MATERIALS. KEEP RECEIPTS FROM LANDFILLS OF HAZARDOUS MATERIALS.
- PROVIDE CONSTRUCTION LAYOUT AND STAKING, SET TEMPORARY BENCHMARKS AS NECESSARY, PROTECT EXISTING BENCH MARKS. CALL OUT ANY DISCREPANCIES IN THE TOPOGRAPHY OR BOUNDARY INFORMATION TO THE ATTENTION OF THE ENGINEER PRIOR TO BEGINNING CONSTRUCTION. THE LOCATION OF THE BENCH MARK SHALL BE 3' FROM EACH SIDE OF EXISTING OR NEW SIDEWALKS AND SOIL STOCKPILES. PROVIDE SET FINISHING DOWNSCREEN AT ANY SET FINISHING.
- MARK ALL TREES AND VEGETATION TO REMAIN PRIOR TO CLEANING CLEAR SITE OF ALL TREES AND BRUSH. NOTIFY UTILITY LOCATOR SERVICE PRIOR TO ANY EXCAVATION. THE LOCATION OF EXISTING UTILITIES SHALL BE SHOWN ON THE DRAWINGS. ALL UTILITIES DEVICES ARE IN PLACE AND OPERATIONAL. SEE SEDIMENT AND EROSION CONTROL NOTES.
- THE PRESENCE OF GROUNDWATER IN THE SOIL SHALL NOT CONSTITUTE A CHANGE IN THE CONTRACT PRICE.
- FINISHED GRADING SHALL BRING THE GROUND SURFACE TO THE REQUIRED LINES AND GRADES MATCHING EXISTING SURROUNDINGS. PROVIDE FOR POSITIVE DRAINAGE FROM SIDEWALKS AND PAVEMENTS. BACKFILL CURBING, PROVIDE FOR TOPSOIL PLACEMENT, GRASSING AND MULCHING. PLACE APPROVED TOPSOIL FROM STOCKPILES OR FROM OFF-SITE APPROVED SOURCES TO A MINIMUM DEPTH OF 4". LEAVE SURFACE SMOOTH AND UNIFORM. FREE OF LUMBS, ROOTS, STICKS AND ROCKS IN PREPARATION FOR SEEDING. HOMEOWNERS HAVE SPECIAL CARROSSING OR SOIL THAT IS DESTROYED OR DAMAGED DURING SIDEWALK CONSTRUCTION IT SHALL BE REPLACED BY THE OWNER.
- PROVIDE AND INSTALL PORTLAND CEMENTWALKS AND CURB AND GUTTER WHERE SHOWN ON THE DRAWINGS. PROVIDE TRAFFIC CONTROL THROUGHOUT THE DURATION OF THE WORK PER SCOOT AND AUTO REQUIREMENTS AND STANDARDS. METHODS AND MATERIALS SHALL BE AS REQUIRED BY THE SOUTH CAROLINA DEPARTMENT OF TRANSPORTATION STANDARD SPECIFICATIONS FOR HIGHWAYS AND BRIDGES. THE CONSTRUCTION SHALL BE IN ACCORDANCE WITH THE STANDARD SPECIFICATIONS AND SHALL BE AS REQUIRED BY SECTION 501 OF THE STANDARD SPECIFICATIONS, INCLUDING CURBING, CONCRETE MATERIALS AND CONSTRUCTION FOR SIDEWALKS AND CURB AND GUTTER SHALL CONFORM TO THE REQUIREMENTS OF SECTION 720 OF THE STANDARD SPECIFICATIONS. GRIND ANY ROOTS UNDER SIDEWALKS BELOW SURFACE TO ALLOW FOR EVEN GRASSES ON THE NEW SIDEWALKS.
- PROVIDE AND MAINTAIN PORTABLE CONCRETE WASHOUT UNIT. DO NOT WASHOUT CONCRETE ON GRADE.
- PROVIDE AND APPLY PAVENTMENT PAINTED MARKINGS AND STRIPING WHERE SHOWN ON THE DRAWINGS. METHODS AND MATERIALS SHALL BE AS REQUIRED BY THE SOUTH CAROLINA DEPARTMENT OF TRANSPORTATION STANDARD SPECIFICATIONS FOR HIGHWAY CONSTRUCTION. THE PAINT SHALL BE IN ACCORDANCE WITH THE REQUIREMENTS OF SECTION 604 OF THE STANDARD SPECIFICATIONS. LESS GLASS BEADS. PAINT SHALL BE WHITE IN COLOR EXCEPT FOR HANDICAPPED PARKING WHICH SHALL MEET THE REQUIREMENTS OF THE A.D.A., CURRENT EDITION, IN PAINT STRIPING AND COLOR.



HANDICAP SIDEWALK AND RAMP DETAILS
SCALE: NONE

CONSTRUCTION SCHEDULE

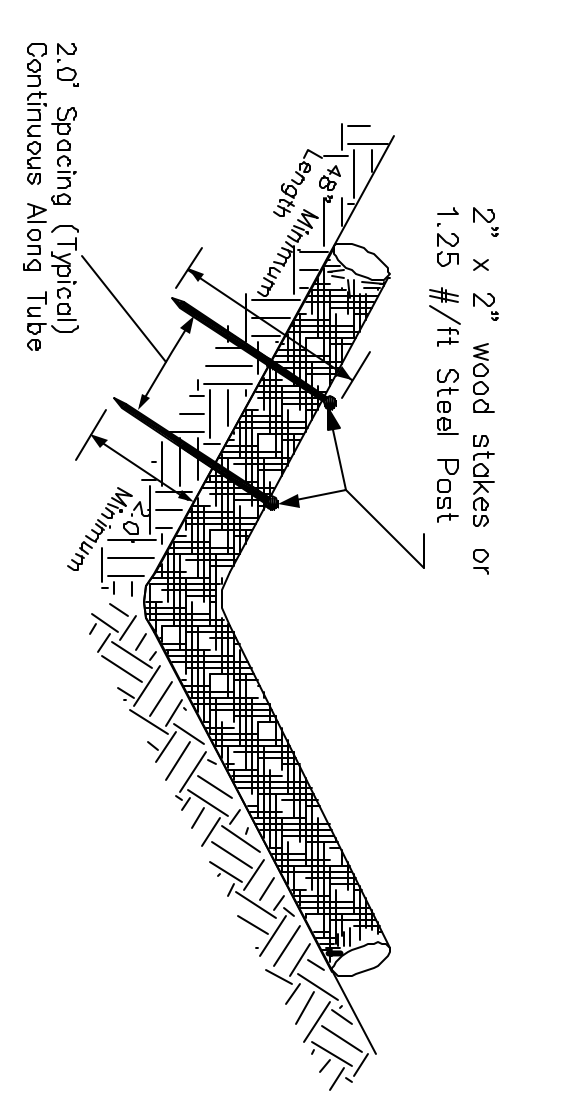
ACTIVITY	JULY	AUG.	SEPT.
INSTALLATION OF SIGNMENT MEASURES AND MARKINGS	██████████	██████████	██████████
DEMOLITION OF EXISTING SIDEWALKS AND NEW SIDEWALK CONSTRUCTION	██████████	██████████	██████████
INSTALL CURB AND GUTTER WITH TOPSOIL, GRASS AND MULCH ALL INTERSECTION AREAS	██████████	██████████	██████████
FINAL CLEAN UP	██████████	██████████	██████████

NOTE: THIS SCHEDULE IS ESTIMATED. SITE CONTRACTOR SHALL PROVIDE MORE DETAILED ACTIVITY SCHEDULE PRIOR TO CONSTRUCTION.

ACTIVITY SCHEDULE

- CONTACT THE CITY OF GREER FOR AN ON-SITE PRE-CONSTRUCTION CONFERENCE PRIOR TO BEGINNING WORK.
- CONDUCT THE WORK WITH ALL PERMITS IN HAND.
- PROVIDE TRAFFIC CONTROL DURING THE WORK PER SCOOT AND AUTO REQUIREMENTS AND STANDARDS.
- BEGIN WORK BY REMOVING AND REPLACING EXISTING SIDEWALK AS SHOWN. DISPOSE OF REMOVED SIDEWALK PROPERLY AND PROMPTLY.
- BACKFILL NEW SIDEWALK, SOIL GRASS AND MULCH PROMPTLY.
- INSTALL HANDICAPPED RAMP AS SHOWN AT PUBLIO STREET INTERSECTIONS.
- INSTALL NEW SIDEWALK AS SHOWN. BACKFILL EDGES OF NEW SIDEWALK, SOIL GRASS AND MULCH PROMPTLY.
- PROVIDE SEDIMENT AND EROSION CONTROL THROUGHOUT THE DURATION OF THE WORK SO THAT NO TRACKING OF SEDIMENT OCCURS ON PUBLIC AND PRIVATE STREETS AND DRIVEWAYS.
- REMOVE ALL EXCAVATION AND DEMOLISHED ITEMS LEFT. MAINTAIN GRASSING UNTIL A SUITABLE STAND IS OBTAINED. REMOVE ALL SEDIMENT AND EROSION CONTROL DEVICES.

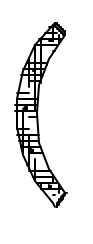
SEDIMENT TUBE INSTALLATION



SEDIMENT TUBE SPACING

SLOPE	MAX. SEDIMENT TUBE SPACING
LESS THAN 2%	100-FEET
2%	75-FEET
3%	50-FEET
4%	30-FEET
5%	40-FEET
GREATER THAN 6%	25-FEET

PLAN SYMBOL



South Carolina Department of Health and Environmental Control
 SEDIMENT TUBES
 STANDARD DRAWING NO. SC-05 PAGE 1 OF 2
 REVISION DATE

NOT TO SCALE

SEDIMENT TUBES - GENERAL NOTES

1. Sediment tubes shall be installed in drainage covering channels and around inlets to help prevent off-site discharge of sediment-laden stormwater runoff.
2. Sediment tubes are elongated tubes of compacted geotextiles, semisynthetic polypropylene, polyethylene, or polyethylene non-degradable material.
3. The outer casing of the sediment tube should consist of semisynthetic polypropylene photodegradable materials treated with ultraviolet stabilizers or a semisynthetic high-density polyethylene non-degradable material.
4. Sediment tubes, when used as checks within channels, should range between 18-inches and 24-inches depending on channel dimensions. Diameters outside this range may be allowed where necessary when approved.
5. Cutted excelsior wood, or natural coconut products that are rolled up to create a sediment tube are not allowed.
6. Sediment tubes should be staked using wooden stakes (2-inch X 2-inch) or steel posts (standard "U" or "T" sections with a minimum weight of 1.25 pounds per foot) at a minimum of 48-inches in length placed on 2-foot centers.
7. Install all sediment tubes to ensure that no gaps exist between the soil and the bottom of the tube. Manufacturer's recommendations should always be consulted before installation.
8. The ends of adjacent sediment tubes should be overlapped 6-inches to prevent flow and sediment from passing through the field joint.
9. Sediment tubes should not be stacked on top of one another, unless recommended by manufacturer.
10. Each sediment tube should be installed in a trench with a depth equal to 1/3 the diameter of the sediment tube.
11. Sediment tubes should continue up the side slopes a minimum of 1-foot above the design flow depth of the channel.
12. Install stakes at a diagonal facing incoming runoff.

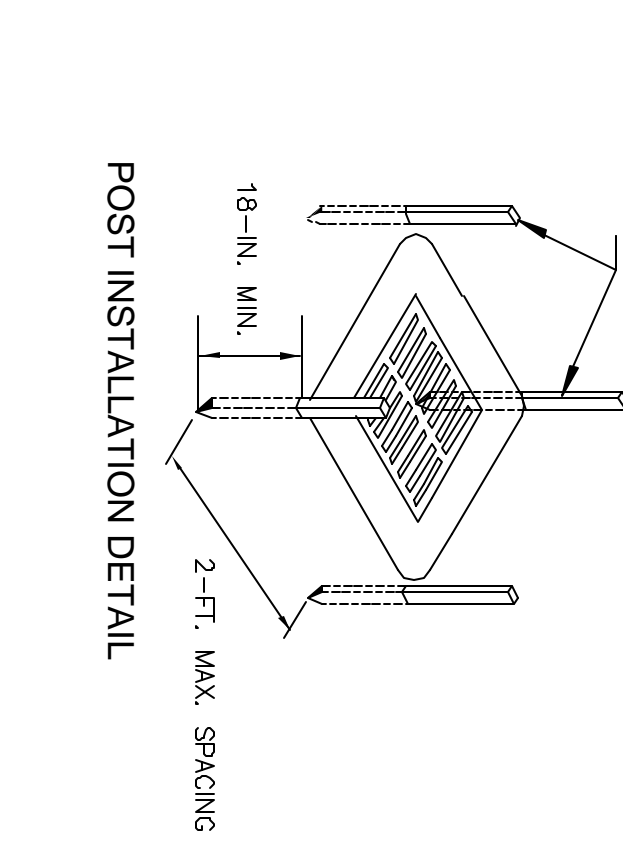
SEDIMENT TUBES - INSPECTION & MAINTENANCE

1. The key to functional sediment tubes is weekly inspections, routine maintenance, and regular sediment removal.
2. Regular inspections of sediment tubes shall be conducted once every calendar week and, as recommended, within 24-hours after each rainfall event that produces 1/2-inch or more of precipitation.
3. Attention to sediment accumulations in front of the sediment tube is extremely important. Accumulated sediment should be continually monitored and removed when necessary.
4. Remove accumulated sediment when it reaches 1/3 the height of the sediment tube.
5. Removed sediment shall be placed in stockpile storage areas or spread thinly across disturbed area. Stabilize the removed sediment after it is relocated.
6. Large debris, trash and leaves should be removed from in front of tubes when found.
7. If erosion causes the edges to fall to a height equal to or below the height of the sediment tube, repairs should be made immediately to prevent further erosion.
8. Sediment area has been completely stabilized. Permanent recommendations should always be consulted before installation.

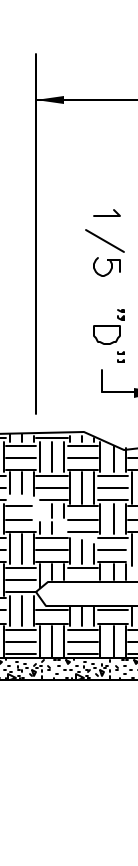
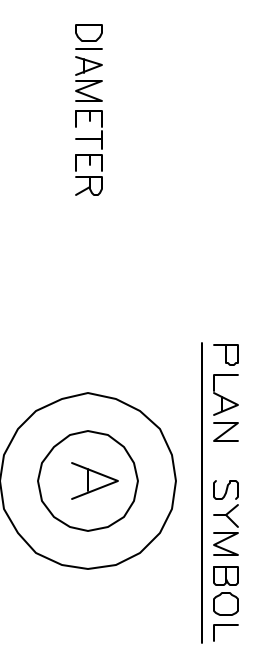
South Carolina Department of Health and Environmental Control
 SEDIMENT TUBES
 STANDARD DRAWING NO. SC-05 PAGE 2 OF 2
 REVISION DATE

GENERAL NOTES

2" x 2" WOOD STAKES or 1.25 #11 STEEL POSTS



SEDIMENT TUBE INSTALLATION DETAIL



SEDIMENT TUBE BURIAL DETAIL

South Carolina Department of Health and Environmental Control
 SEDIMENT TUBE INLET PROTECTION
 STANDARD DRAWING NO. SC-07A PAGE 1 OF 2
 REVISION DATE

NOT TO SCALE

SEDIMENT TUBES - GENERAL NOTES

1. Sediment tubes shall be installed in drainage covering channels and around inlets to help prevent off-site discharge of sediment-laden stormwater runoff.
2. Sediment tubes are elongated tubes of compacted geotextiles, semisynthetic polypropylene, polyethylene, or polyethylene non-degradable material.
3. The outer casing of the sediment tube should consist of semisynthetic polypropylene photodegradable materials treated with ultraviolet stabilizers or a semisynthetic high-density polyethylene non-degradable material.
4. Sediment tubes, when used as checks within channels, should range between 18-inches and 24-inches depending on channel dimensions. Diameters outside this range may be allowed where necessary when approved.
5. Cutted excelsior wood, or natural coconut products that are rolled up to create a sediment tube are not allowed.
6. Sediment tubes should be staked using wooden stakes (2-inch X 2-inch) or steel posts (standard "U" or "T" sections with a minimum weight of 1.25 pounds per foot) at a minimum of 48-inches in length placed on 2-foot centers.
7. Install all sediment tubes to ensure that no gaps exist between the soil and the bottom of the tube. Manufacturer's recommendations should always be consulted before installation.
8. The ends of adjacent sediment tubes should be overlapped 6-inches to prevent flow and sediment from passing through the field joint.
9. Sediment tubes should not be stacked on top of one another, unless recommended by manufacturer.
10. Each sediment tube should be installed in a trench with a depth equal to 1/3 the diameter of the sediment tube.
11. Sediment tubes should continue up the side slopes a minimum of 1-foot above the design flow depth of the channel.
12. Install stakes at a diagonal facing incoming runoff.

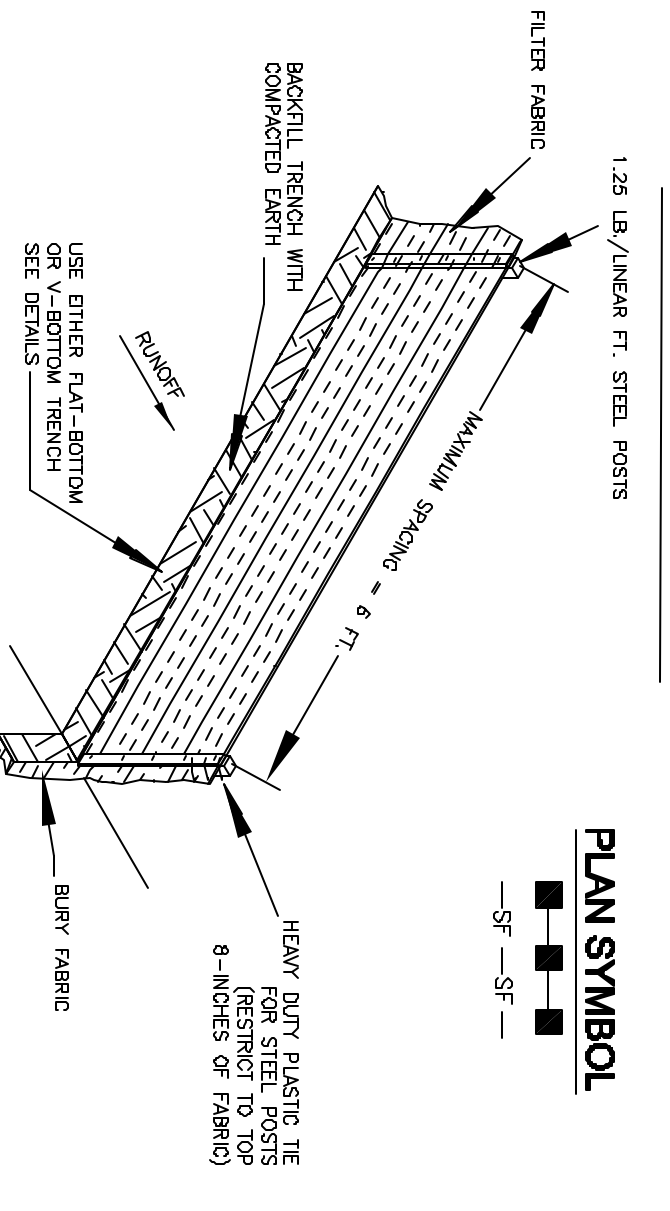
SEDIMENT TUBES - INSPECTION & MAINTENANCE

1. The key to functional sediment tubes is weekly inspections, routine maintenance, and regular sediment removal.
2. Regular inspections of sediment tubes shall be conducted once every calendar week and, as recommended, within 24-hours after each rainfall event that produces 1/2-inch or more of precipitation.
3. Attention to sediment accumulations in front of the sediment tube is extremely important. Accumulated sediment should be continually monitored and removed when necessary.
4. Remove accumulated sediment when it reaches 1/3 the height of the sediment tube.
5. Removed sediment shall be placed in stockpile storage areas or spread thinly across disturbed area. Stabilize the removed sediment after it is relocated.
6. Large debris, trash and leaves should be removed from in front of tubes when found.
7. If erosion causes the edges to fall to a height equal to or below the height of the sediment tube, repairs should be made immediately to prevent further erosion.
8. Sediment area has been completely stabilized. Permanent recommendations should always be consulted before installation.

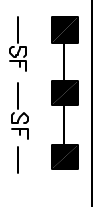
South Carolina Department of Health and Environmental Control
 SEDIMENT TUBES
 STANDARD DRAWING NO. SC-05 PAGE 2 OF 2
 REVISION DATE

GENERAL NOTES

SILT FENCE INSTALLATION



PLAN SYMBOL



- SILT FENCE - GENERAL NOTES**
1. Do not use fabric or geotextile materials or in other areas subject to concentrated flows. Silt fence should not be used as a velocity control BMP. Concentrated flows are any flows greater than 0.5 cfs.
 2. Maximum height of silt fence shall be 6 feet.
 3. Maximum slope steepness (formed [Deposition]) to the fence (top) shall be 2:1.
 4. Silt fence fabric, when necessary, shall be supported by one of the following methods:
 - Minimum spacing by installing 3-4 inch galvanized support post to which the new silt fence roll is attached. Attach old roll to new roll with heavy-duty plastic ties or other filter fabric.
 - Attach filter fabric to the steel posts with heavy-duty plastic ties that are evenly spaced within the top 6-inches of the fabric.
 5. Attach filter fabric to the steel posts with heavy-duty plastic ties that are evenly spaced within the top 6-inches of the fabric.
 6. Install the silt fence perpendicular to the direction of the stormwater flow and from the silt fence the proper amount of fabric should be installed. The silt fence should be installed along the proposed/revised silt fence line.
 7. Install the fabric (fabric) every 20-100 feet, depending on slope along silt fence that is installed with slope and where concentrated flows are expected or are documented along the proposed/revised silt fence.

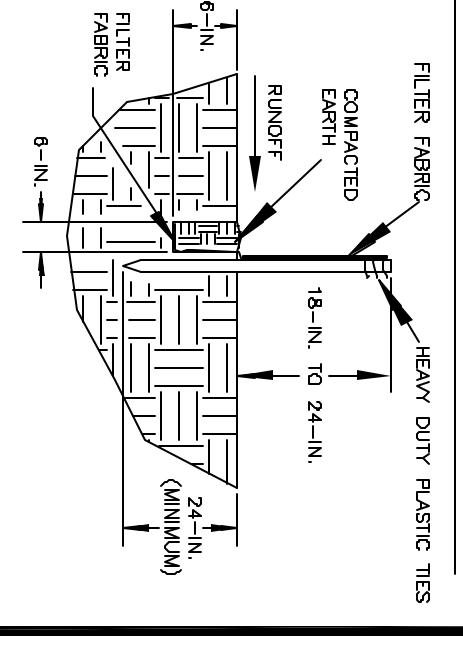
SILT FENCE - POST REQUIREMENTS

1. The key to functional silt fences is weekly inspections, routine maintenance, and regular sediment removal.
2. Regular inspections of silt fences shall be conducted once every calendar week and, as recommended, within 24-hours after each rainfall event that produces 1/2-inch or more of precipitation.
3. Attention to sediment accumulations along the silt fence is extremely important. Accumulated sediment should be continually monitored and removed when necessary.
4. Remove accumulated sediment when it reaches 1/3 the height of the silt fence.
5. Removed sediment shall be placed in stockpile storage areas or spread thinly across disturbed area. Stabilize the removed sediment after it is relocated.
6. Large debris, trash and leaves should be removed from in front of tubes when found.
7. If erosion causes the edges to fall to a height equal to or below the height of the silt fence, repairs should be made immediately to prevent further erosion.
8. Sediment area has been completely stabilized. Permanent recommendations should always be consulted before installation.

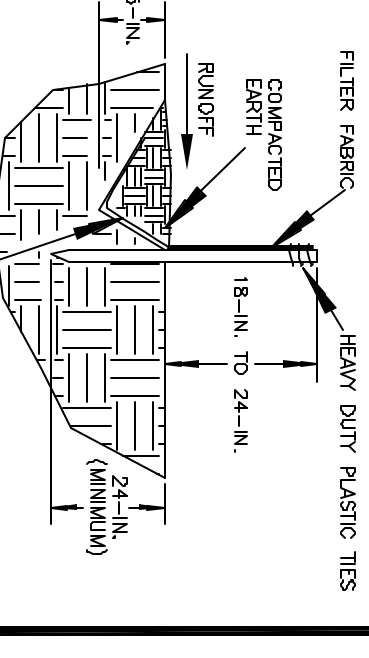
South Carolina Department of Health and Environmental Control
 SILT FENCE
 STANDARD DRAWING NO. SC-03 PAGE 2 OF 2
 REVISION DATE

GENERAL NOTES

FLAT-BOTTOM TRENCH DETAIL



V-SHAPED TRENCH DETAIL



South Carolina Department of Health and Environmental Control
 SILT FENCE
 STANDARD DRAWING NO. SC-03 PAGE 1 OF 2
 REVISION DATE

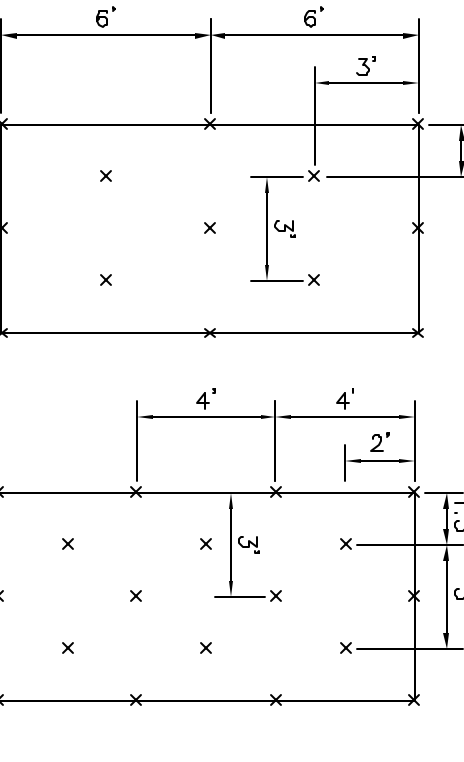
NOT TO SCALE

SILT FENCE - INSPECTION & MAINTENANCE

1. The key to functional silt fences is weekly inspections, routine maintenance, and regular sediment removal.
2. Regular inspections of silt fences shall be conducted once every calendar week and, as recommended, within 24-hours after each rainfall event that produces 1/2-inch or more of precipitation.
3. Attention to sediment accumulations along the silt fence is extremely important. Accumulated sediment should be continually monitored and removed when necessary.
4. Remove accumulated sediment when it reaches 1/3 the height of the silt fence.
5. Removed sediment shall be placed in stockpile storage areas or spread thinly across disturbed area. Stabilize the removed sediment after it is relocated.
6. Large debris, trash and leaves should be removed from in front of tubes when found.
7. If erosion causes the edges to fall to a height equal to or below the height of the silt fence, repairs should be made immediately to prevent further erosion.
8. Sediment area has been completely stabilized. Permanent recommendations should always be consulted before installation.

EROSION CONTROL BLANKET SCHEDULE

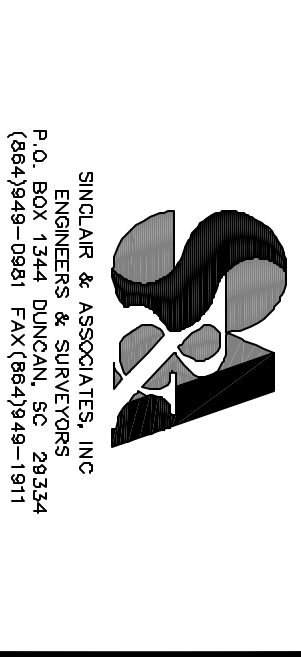
TOTAL SLOPE LENGTH	NORTH AMERICAN GREEN MATERIAL / STAPLE PATTERN		
	1.75:1	2:1	2.5:1
25'	0' - 25'	S75/C	S75/B
50'	0' - 25'	S75/C	S75/B
	25' - 50'	SC150/C	SI150/C
75'	0' - 25'	S75/C	S75/B
	25' - 50'	CI25/C	SI150/C
	50' - 75'	CI25/C	SI150/C



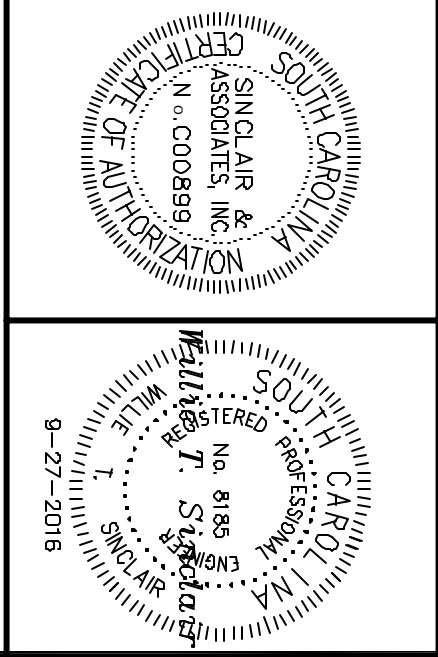
- NOTES:**
1. USE NAC/CI25 ON ALL DITCH SECTIONS OVER 10% SLOPE.
 2. USE NORTH AMERICAN GREEN OR APPROVED EQUAL.

SLOPE PROTECTION

SCALE: NONE



NOTICE: THIS DRAWING IS THE PROPERTY OF SINGLAR & ASSOCIATES, INC. IT IS TO BE USED ONLY FOR THE PROJECT AND SITE SPECIFICALLY IDENTIFIED HEREIN. ANY REUSE, REPRODUCTION, OR USE BY OTHERS EXCEPT AS REQUIRED FOR THIS SPECIFIC PROJECT IS PROHIBITED.



**CITY OF GREER
 BRUSHY CREEK ROAD
 SIDEWALK PROJECT**

**SEDIMENT AND
 EROSION
 CONTROL
 DETAILS**

BRUSHY CREEK ROAD
 SIDEWALK PROJECT DRAWINGS
 GREENVILLE COUNTY,
 SOUTH CAROLINA

DATE: 01/11/2016 APPROVED BY: WTS
 DRAWN BY: EFA CHECKED BY: WTS
 PROJECT NO: 2361

C-7

PATH: c:\xps old projects\2016\2361.dwg
 © 2016 SINGLAR & ASSOCIATES, INC.