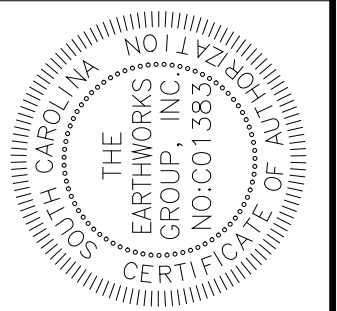
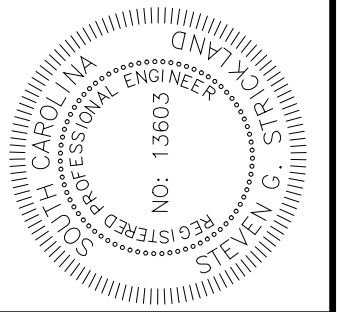


GEORGETOWN COUNTY
 DEPARTMENT OF PUBLIC SERVICES
 GEORGETOWN COUNTY | SOUTH CAROLINA

MARSH WALK REPAIR & REPLACEMENT



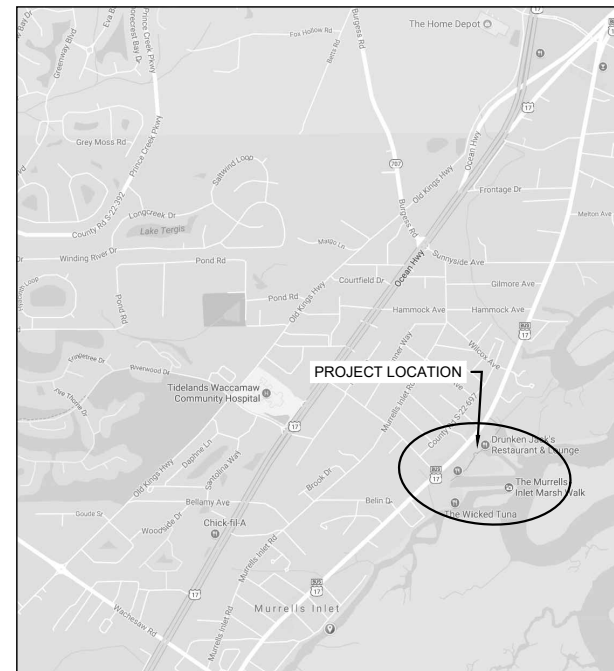
11655 HIGHWAY 707
 MURRELLS INLET, SC 29576
 843.651.7900
 (FAX) 843.651.7903
 www.earthworksgroup.com



SITE OVERVIEW
 SCALE: N.T.S.



LOCATION MAP
 SCALE: N.T.S.



VICINITY MAP
 SCALE: N.T.S.

DRAWING INDEX	
SHEET	TITLE
G0.01	COVER PAGE
G1.01	MARSH WALK PHASE INDEX
STRUCTURAL REPAIRS	
S1.01	PHASES 1A, 1B & 5 - STR. PLAN
S1.02	PHASES 1C, 1D & 1E STR. PLAN
S1.03	PHASES 1E, 2 STR. PLAN
S1.04	PHASES 2, 3A STR PLAN
S1.05	PHASES 3B, 3C, 4A STR PLAN
S1.06	PHASES 4A STR PLAN
S1.07	PHASES 4A STR PLAN

**MARSHWALK REPAIR ASSESSMENT
 MARSHWALK & VETERANS PIER
 MURRELLS INLET, SC
 PREPARED FOR
 GEORGETOWN COUNTY
 COVER PAGE**

ADDITIONS, SUBMITTALS & REVISIONS			
NO.	DATE	DESCRIPTION	BY
1	12/07/17	ADDENDUM NO. 2 REV.	DHC
2	#####	#####	#####
3	#####	#####	#####
4	#####	#####	#####

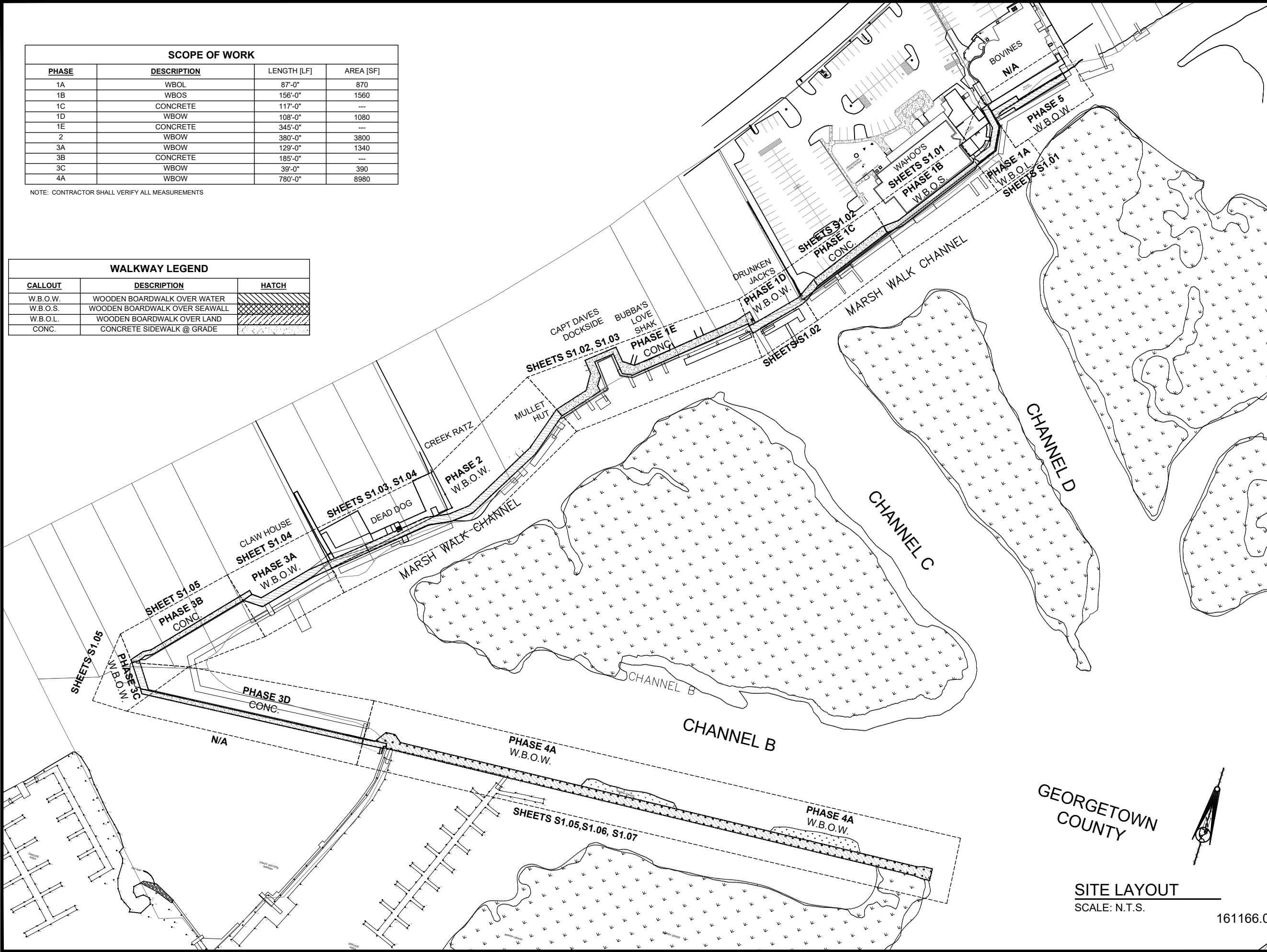
ALL RIGHTS RESERVED. The Earthworks Group is hereby known as EW Inc. The User agrees not to use this document, in whole or part, for any purpose or project other than the project, which is the subject of this Agreement. User agrees to waive all claims against EW Inc. resulting in any way from unauthorized changes or reuse of this document by anyone other than EW Inc. in addition, User agrees, to the fullest extent permitted by law, to indemnify and hold EW Inc. harmless from any damages, including reasonable attorney's fees and costs of defense, that may be incurred by anyone other than EW Inc. or from any reuse of the document without the prior written consent of EW, Inc. or the architect's/engineer's written consent is prohibited and any infringement is subject to legal action. This drawing, and the design shown, is the property of EW. The reproduction or use of this drawing without the architect's/engineer's written consent is prohibited and any infringement is subject to legal action.

ALL RIGHTS RESERVED. The EARTHWORKS Group is hereby known as EW Inc. The User agrees not to use this document, in whole or part, for any purpose or project other than the project, which is the subject of this Agreement. User agrees to waive all claims against EW Inc. resulting in any way from unauthorized changes or reuse of this document by anyone other than EW Inc. in addition, User agrees, to the fullest extent permitted by law, to indemnify and hold EW Inc. harmless from any damages, liability, costs, including reasonable attorney fees and costs of defense arising from any reuse of the document without the prior written consent of EW, Inc. or from any reuse of the document without the prior written consent of EW, Inc. The reproduction or use of this drawing without the architect's/engineer's written consent is prohibited and any infringement is subject to legal action.

SCOPE OF WORK			
PHASE	DESCRIPTION	LENGTH [LF]	AREA [SF]
1A	WBOL	87'-0"	870
1B	WBOS	156'-0"	1560
1C	CONCRETE	117'-0"	---
1D	WBOW	108'-0"	1080
1E	CONCRETE	345'-0"	---
2	WBOW	380'-0"	3800
3A	WBOW	129'-0"	1340
3B	CONCRETE	185'-0"	---
3C	WBOW	39'-0"	390
4A	WBOW	780'-0"	8980

NOTE: CONTRACTOR SHALL VERIFY ALL MEASUREMENTS

WALKWAY LEGEND		
CALLOUT	DESCRIPTION	HATCH
W.B.O.W.	WOODEN BOARDWALK OVER WATER	
W.B.O.S.	WOODEN BOARDWALK OVER SEAWALL	
W.B.O.L.	WOODEN BOARDWALK OVER LAND	
CONC.	CONCRETE SIDEWALK @ GRADE	



SITE LAYOUT
SCALE: N.T.S.

EARTHWORKS
Planning and design consultants

11655 HIGHWAY 707
 MURRELLS INLET, SC 29576
 843.651.7900
 (FAX) 843.651.7903
 www.earthworksgroup.com

SOUTH CAROLINA REGISTERED PROFESSIONAL ENGINEER
 NO: 13603
 STEVEN G. STRICKLAND

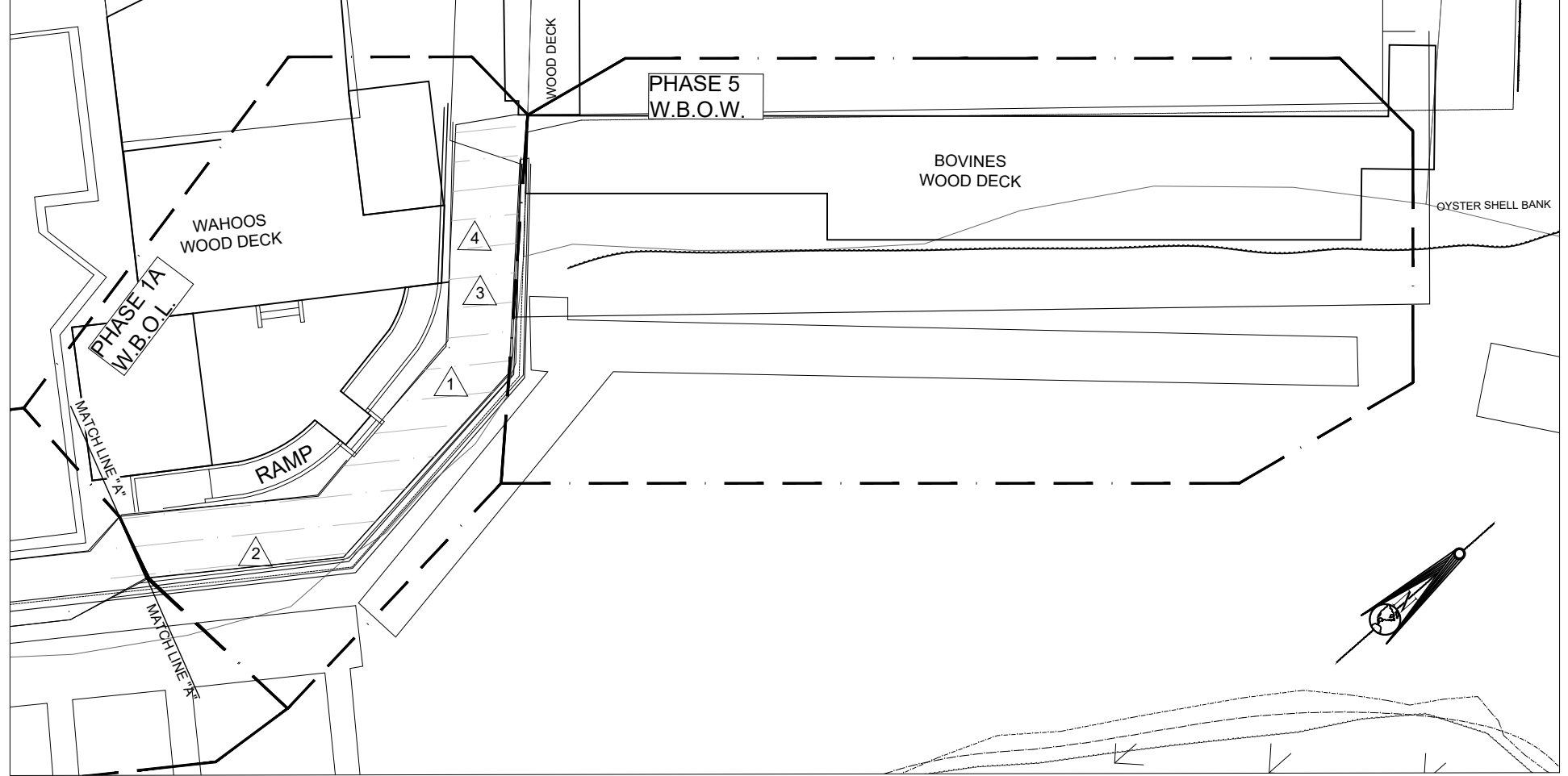
SOUTH CAROLINA REGISTERED PROFESSIONAL ENGINEER
 NO: C01383
 THE EARTHWORKS GROUP, INC.
 CERTIFICATE OF AUTHORIZATION

MARSHWALK REPAIR ASSESSMENT
 MARSHWALK & VETERANS PIER
 MURRELLS INLET, SC
 PREPARED FOR
GEORGETOWN COUNTY
MARSH WALK PHASE INDEX

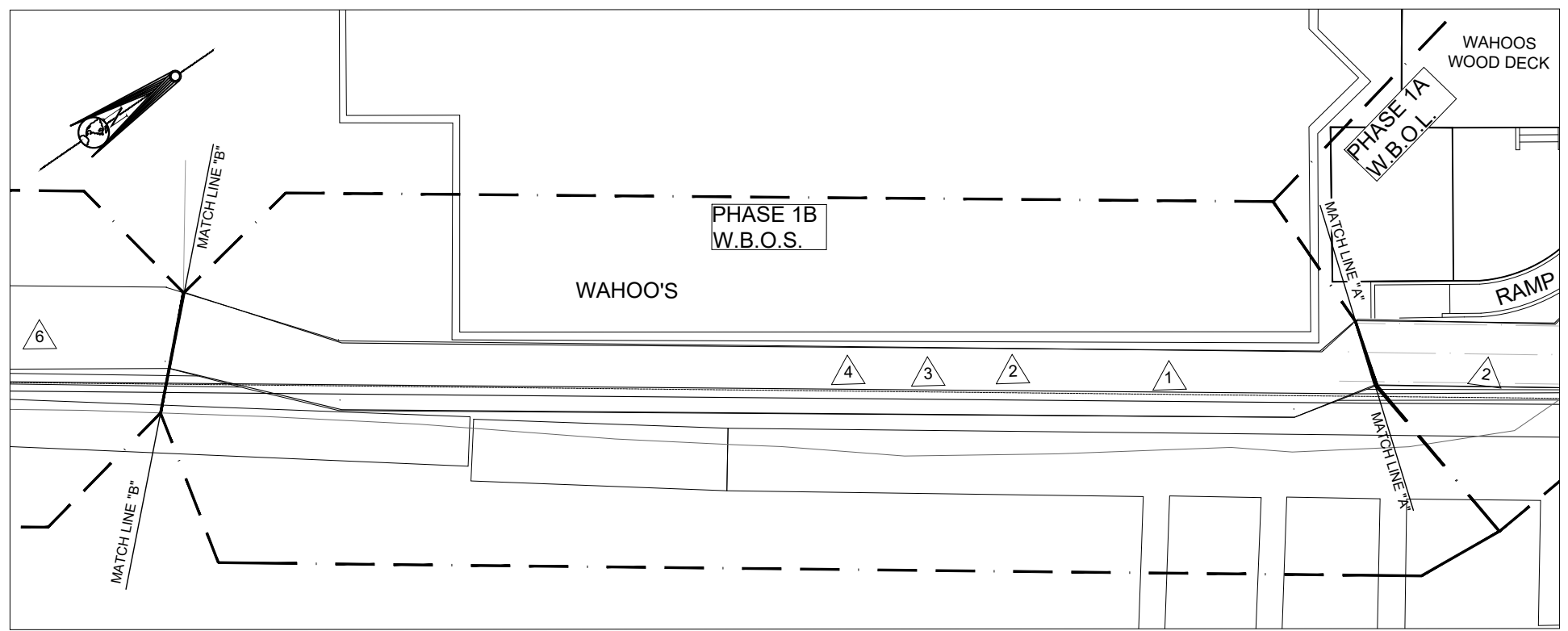
ADDITIONS, SUBMITTALS & REVISIONS			
NO.	DATE	BY	DESCRIPTION
1	#####	##	#####
2	#####	##	#####
3	#####	##	#####
4	#####	##	#####

161166.003.2021.0226.MARSHWALK REPAIRS

ALL RIGHTS RESERVED. The Earthworks Group is hereby known as EW Inc. The User agrees not to use this document, in whole or part, for any purpose or project other than the project, which is the subject of this Agreement. User agrees to waive all claims against EW Inc. resulting in any way from unauthorized changes or reuse of this document by anyone other than EW Inc. in addition, User agrees, to the fullest extent permitted by law, to indemnify and hold EW Inc. harmless from any damages, liability, costs, including reasonable attorney fees and costs of defense arising from any changes made by anyone other than EW Inc. or from any reuse of the document without the prior written consent of EW, Inc. or the architect/engineer's written consent is prohibited and any infringement is subject to legal action. This drawing, and the design shown, is the property of EW. The reproduction or use of this drawing without the architect's/engineer's written consent is prohibited and any infringement is subject to legal action.



PHASES 1A & 5
SCALE: 1" = 20'



PHASE 1B
SCALE: 1" = 20'

- 1 REMOVE AND REPLACE WOOD DECKING
- 2 REMOVE AND REPLACE WOOD RAILS
- 3 REPAIR WOOD JOISTS AS NEEDED
- 4 ADD SS CONNECTORS TO JOIST / PILECAP AS NEEDED
- 5 REMOVE AND REPLACE INSIDE RAILS
- 6 REPLACE TOP CAP RAIL WHERE DAMAGED
- 7 REPLACE MID AND BOTTOM RAIL WHERE DAMAGED
- 8 REMOVE & REPLACE GALV. BOLTS WHERE DAMAGED

EARTHWORKS
planning and design consultants

11655 HIGHWAY 707
MURRELLS INLET, SC 29576
843.651.7900
(FAX) 843.651.7903
www.earthworksgroup.com

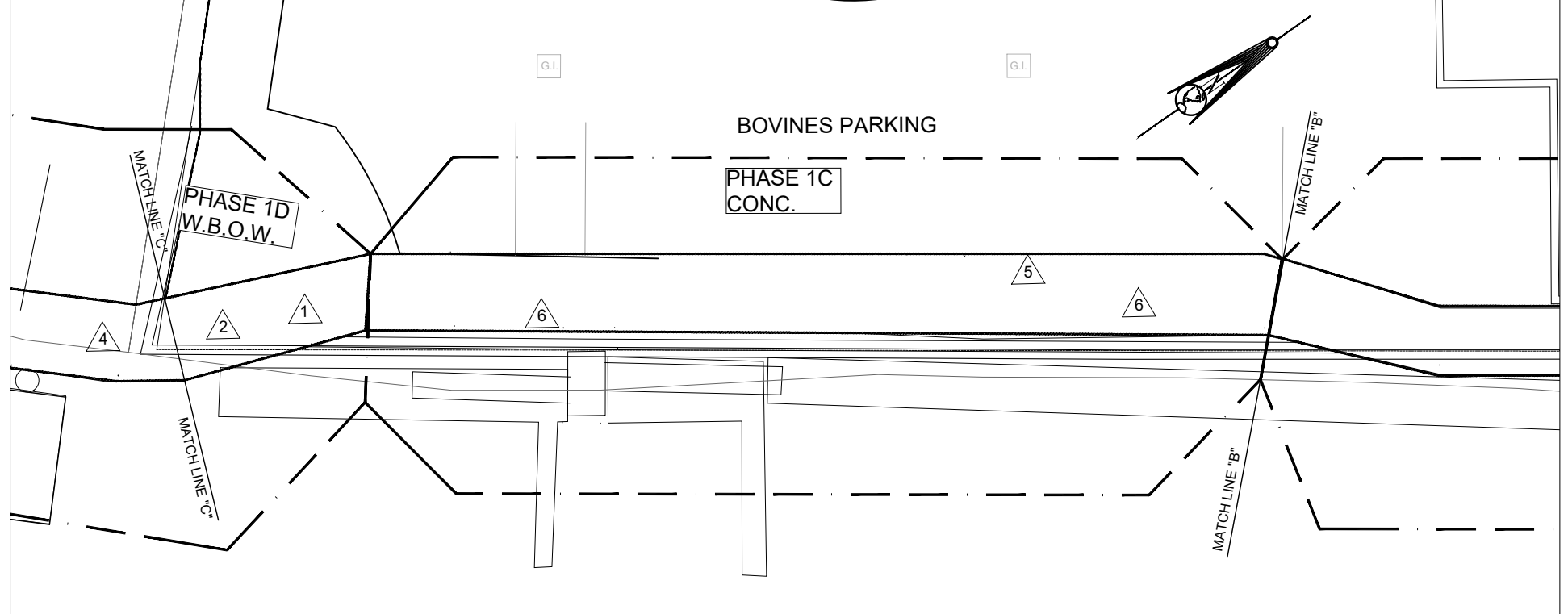
SOUTH CAROLINA REGISTERED PROFESSIONAL ENGINEER
STEVEN G. STRICKLAND
NO: 13603

SOUTH CAROLINA NO. 013833
THE EARTHWORKS GROUP, INC.
CERTIFICATE OF AUTHORIZATION

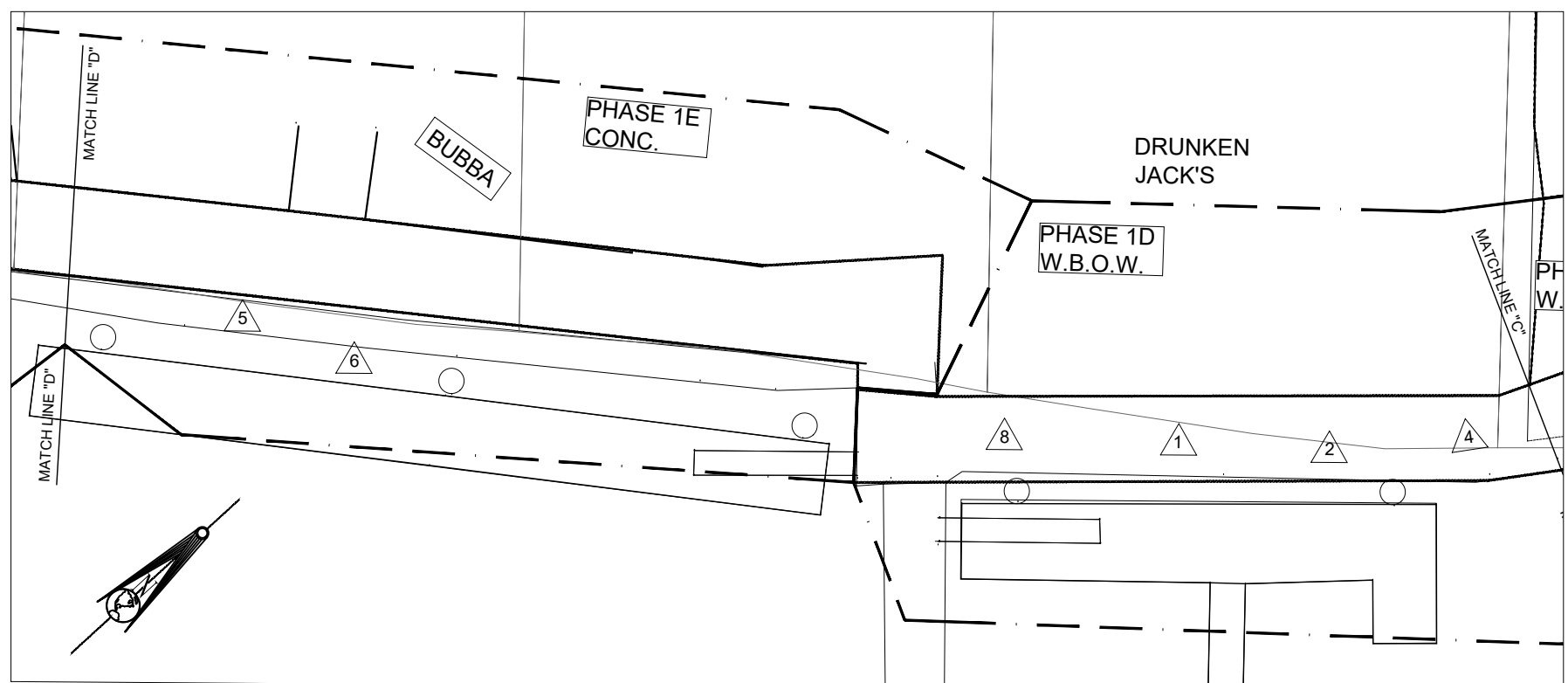
MARSHWALK REPAIR ASSESSMENT
MARSHWALK & VETERANS PIER
MURRELLS INLET, SC
PREPARED FOR
GEORGETOWN COUNTY
PHASES 1A, 1B, & 5 - STR.

ADDITIONS, SUBMITTALS & REVISIONS			
NO.	DATE	DESCRIPTION	BY
1	#####	#####	###
2	#####	#####	###
3	#####	#####	###
4	#####	#####	###

ALL RIGHTS RESERVED. The EARTHWORKS Group is hereby known as EW Inc. The User agrees not to use this document, in whole or part, for any purpose or project other than the project, which is the subject of this Agreement. User agrees to waive all claims against EW Inc. resulting in any way from unauthorized changes or reuse of this document by anyone other than EW Inc. In addition, User agrees, to the fullest extent permitted by law, to indemnify and hold EW Inc. harmless from any damages, liability or costs, including reasonable attorney's fees and costs of defense arising from any reuse of the document without the prior written consent of EW, Inc. or from any reuse of the document without the prior written consent of EW, Inc. or from any reuse of the document without the prior written consent of EW, Inc. The reproduction or use of this drawing without the architect's/engineer's written consent is prohibited and any infringement is subject to legal action.



PHASE 1C
SCALE: 1" = 20'

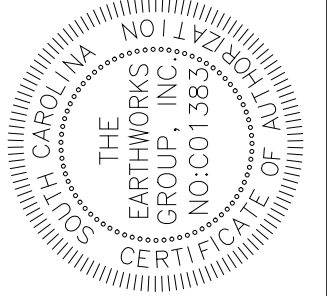
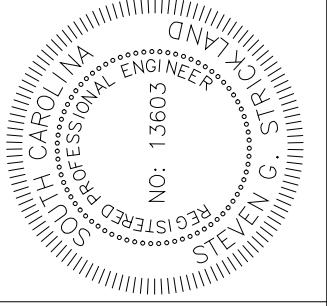


PHASE 1D & 1E
SCALE: 1" = 20'

- 1 REMOVE AND REPLACE WOOD DECKING
- 2 REMOVE AND REPLACE WOOD RAILS
- 3 REPAIR WOOD JOISTS AS NEEDED
- 4 ADD SS CONNECTORS TO JOIST / PILECAP AS NEEDED
- 5 REMOVE AND REPLACE INSIDE RAILS
- 6 REPLACE TOP CAP RAIL WHERE DAMAGED
- 7 REPLACE MID AND BOTTOM RAIL WHERE DAMAGED
- 8 REMOVE & REPLACE GALV. BOLTS WHERE DAMAGED

EARTHWORKS
planning and design consultants

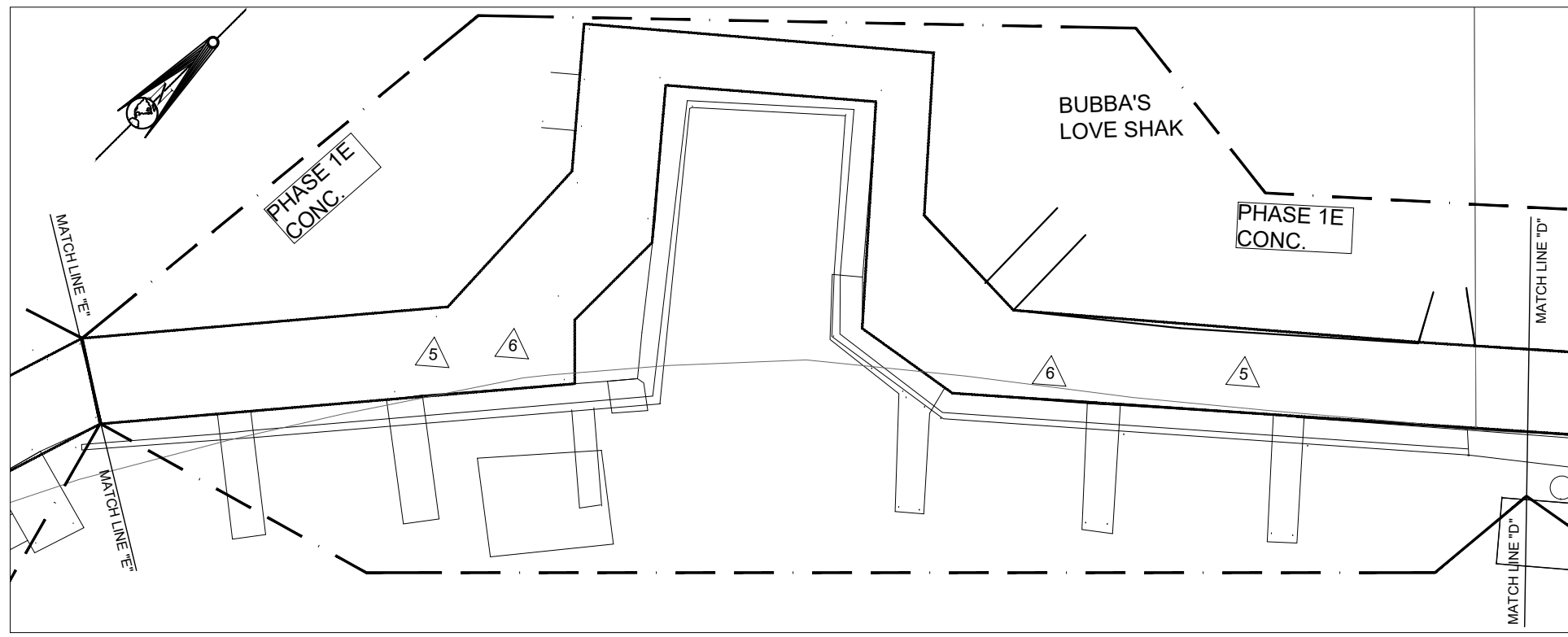
11655 HIGHWAY 707
MURRELLS INLET, SC 29576
843.651.7900
(FAX) 843.651.7903
www.earthworksgroup.com



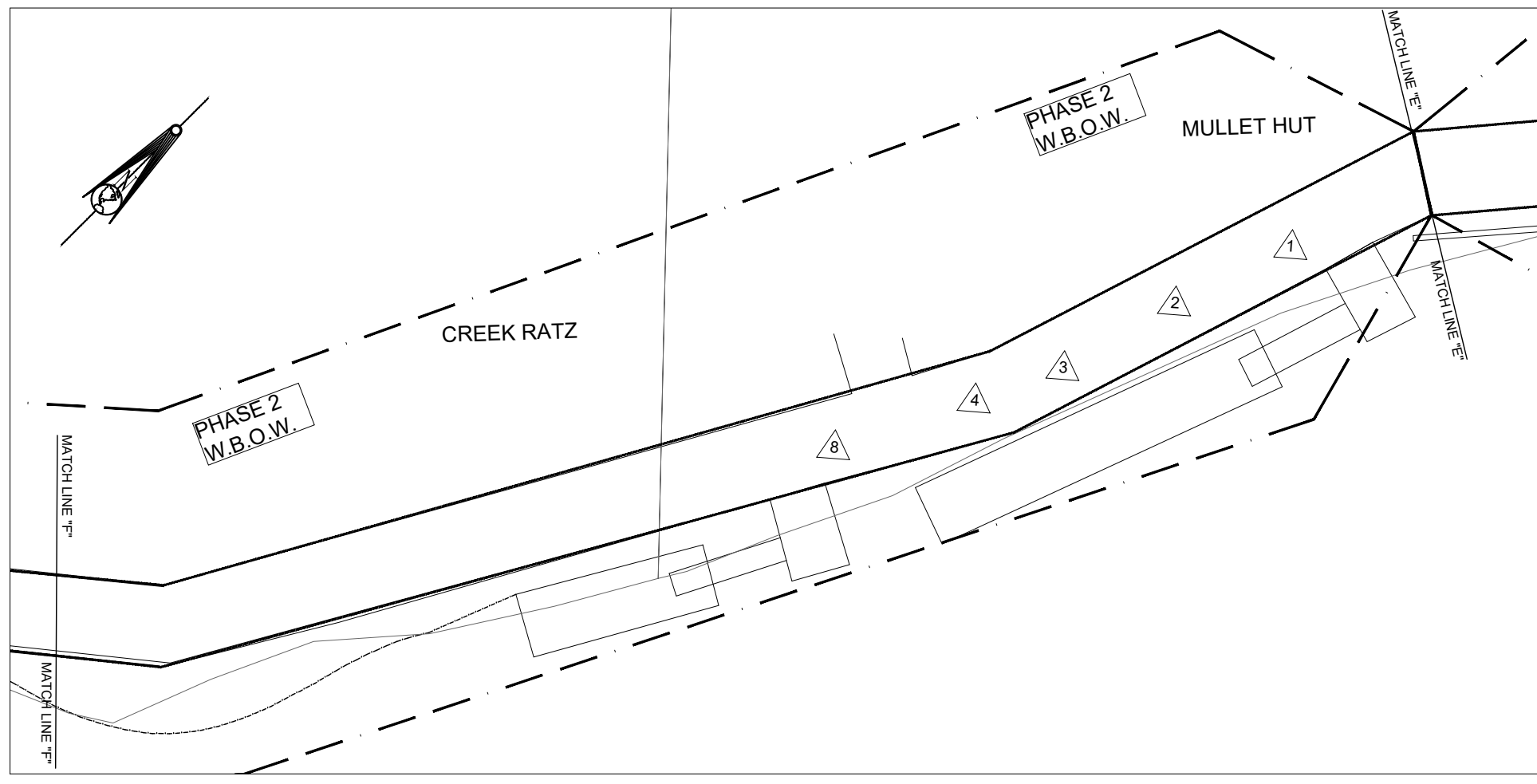
MARSHWALK REPAIR ASSESSMENT
MARSHWALK & VETERANS PIER
MURRELLS INLET, SC
PREPARED FOR
GEORGETOWN COUNTY
PHASES 1C, 1D, & 1E - STR.

ADDITIONS, SUBMITTALS & REVISIONS			
NO.	DATE	DESCRIPTION	BY
1	#####	#####	###
2	#####	#####	###
3	#####	#####	###
4	#####	#####	###
5	#####	#####	###
6	#####	#####	###
7	#####	#####	###
8	#####	#####	###

ALL RIGHTS RESERVED. The Earthworks Group is hereby known as EW Inc. The User agrees not to use this document, in whole or part, for any purpose or project other than the project, which is the subject of this Agreement. User agrees to waive all claims against EW Inc. resulting in any way from unauthorized changes or reuse of this document by anyone other than EW Inc. in addition, User agrees, to the fullest extent permitted by law, to indemnify and hold EW Inc. harmless from any damages, liability, costs, including reasonable attorney's fees and costs of defense arising from any reuse of the document without the prior written consent of EW Inc. or from any reuse of the document without the prior written consent of EW Inc. The reproduction or use of this drawing without the architect's/engineer's written consent is prohibited and any infringement is subject to legal action.



PHASE 1E
SCALE: 1" = 20'

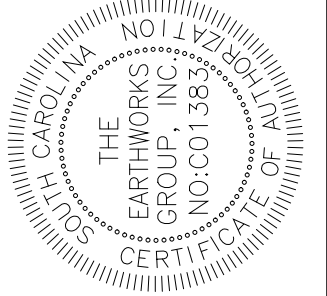
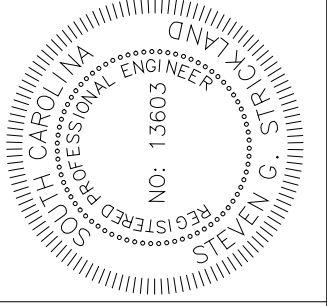


PHASE 2
SCALE: 1" = 20'

- 1 REMOVE AND REPLACE WOOD DECKING
- 2 REMOVE AND REPLACE WOOD RAILS
- 3 REPAIR WOOD JOISTS AS NEEDED
- 4 ADD SS CONNECTORS TO JOIST / PILECAP AS NEEDED
- 5 REMOVE AND REPLACE INSIDE RAILS
- 6 REPLACE TOP CAP RAIL WHERE DAMAGED
- 7 REPLACE MID AND BOTTOM RAIL WHERE DAMAGED
- 8 REMOVE & REPLACE GALV. BOLTS WHERE DAMAGED

EARTHWORKS
Planning and design consultants

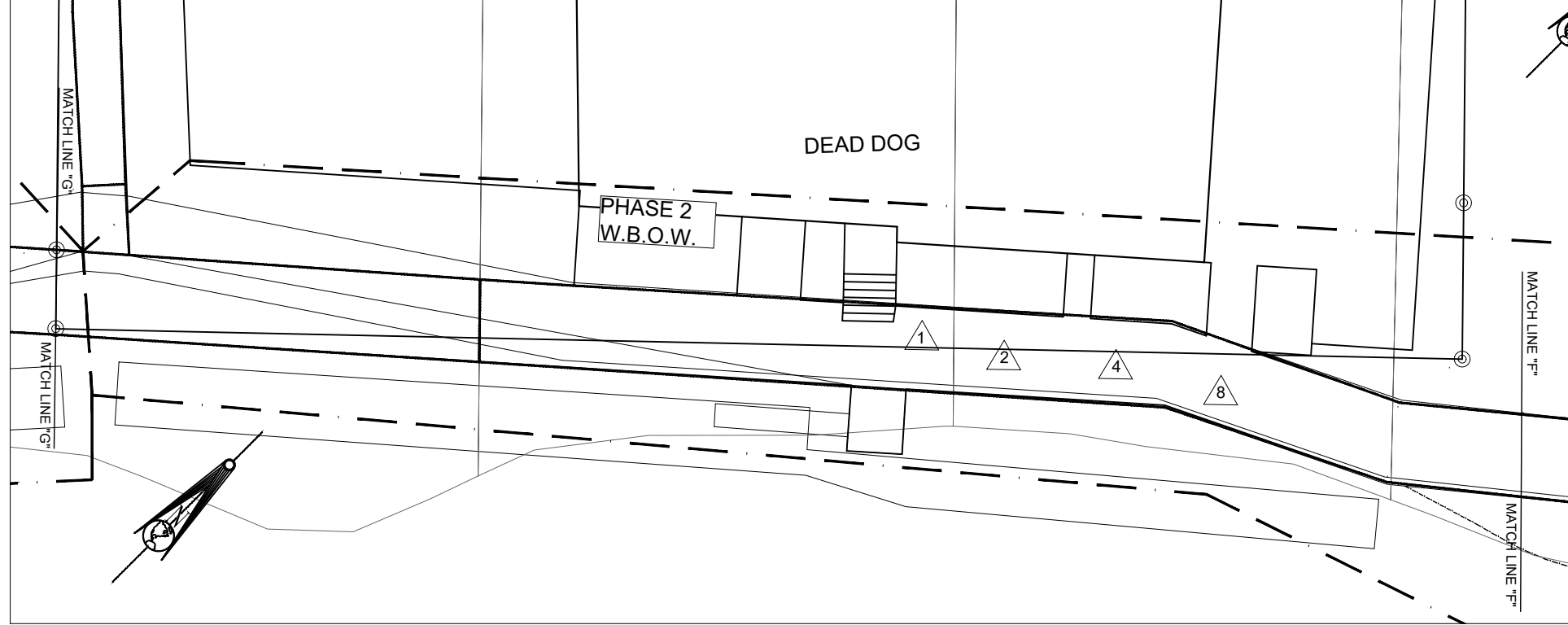
11655 HIGHWAY 707
MURRELLS INLET, SC 29576
843.651.7900
(FAX) 843.651.7903
www.earthworksgroup.com



MARSHWALK REPAIR ASSESSMENT
MARSHWALK & VETERANS PIER
MURRELLS INLET, SC
PREPARED FOR
GEORGETOWN COUNTY
PHASES 1E & 2 - STR.

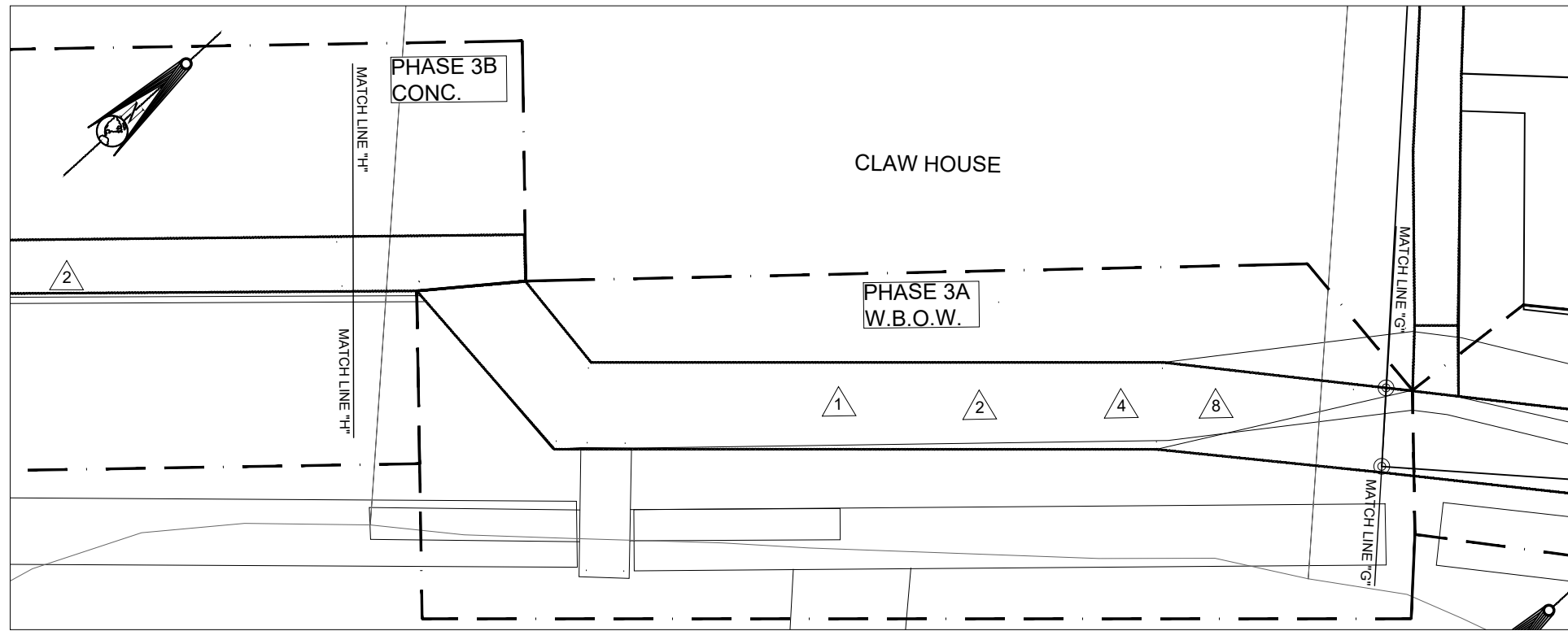
ADDITIONS, SUBMITTALS & REVISIONS			
NO.	DATE	DESCRIPTION	BY
1	#####	#####	###
2	#####	#####	###
3	#####	#####	###
4	#####	#####	###

ALL RIGHTS RESERVED. The EARTHWORKS Group is hereby known as EW Inc. The User agrees not to use this document, in whole or part, for any purpose or project other than the project, which is the subject of this Agreement. User agrees to waive all claims against EW Inc. resulting in any way from unauthorized changes or reuse of this document by anyone other than EW Inc. in addition, User agrees, to the fullest extent permitted by law, to indemnify and hold EW Inc. harmless from any damages, including reasonable attorney's fees and costs of defense arising from any changes made to this document without the prior written consent of EW Inc. or from any reuse of the document without the prior written consent of EW Inc. or the purchaser. This drawing, and the design shown, is the property of EW. The reproduction or use of this drawing without the architect's/engineer's written consent is prohibited and any infringement is subject to legal action.

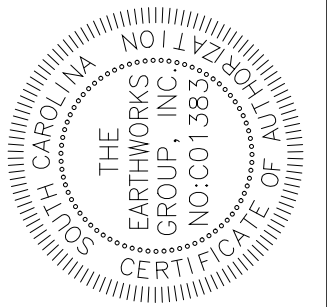
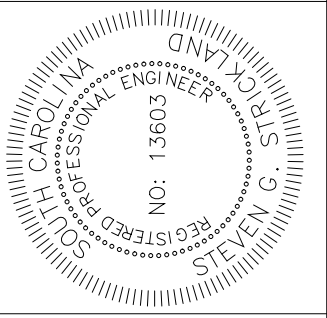
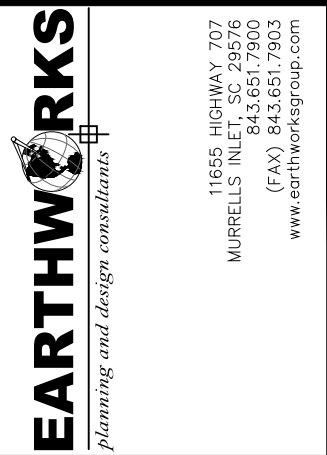


PHASE 2
SCALE: 1" = 20'

- 1 REMOVE AND REPLACE WOOD DECKING
- 2 REMOVE AND REPLACE WOOD RAILS
- 3 REPAIR WOOD JOISTS AS NEEDED
- 4 ADD SS CONNECTORS TO JOIST / PILECAP AS NEEDED
- 5 REMOVE AND REPLACE INSIDE RAILS
- 6 REPLACE TOP CAP RAIL WHERE DAMAGED
- 7 REPLACE MID AND BOTTOM RAIL WHERE DAMAGED
- 8 REMOVE & REPLACE GALV. BOLTS WHERE DAMAGED



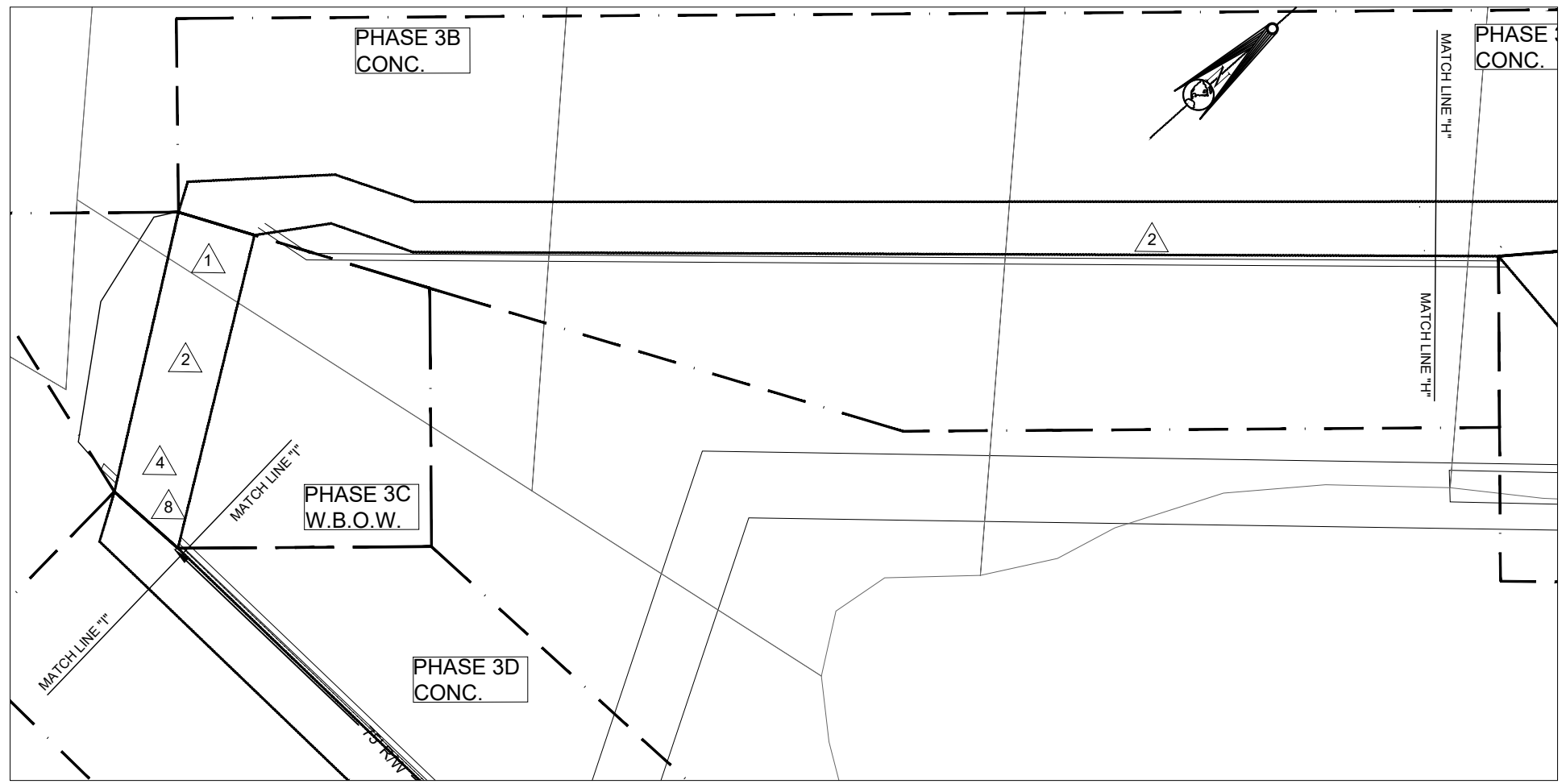
PHASE 3A
SCALE: 1" = 20'



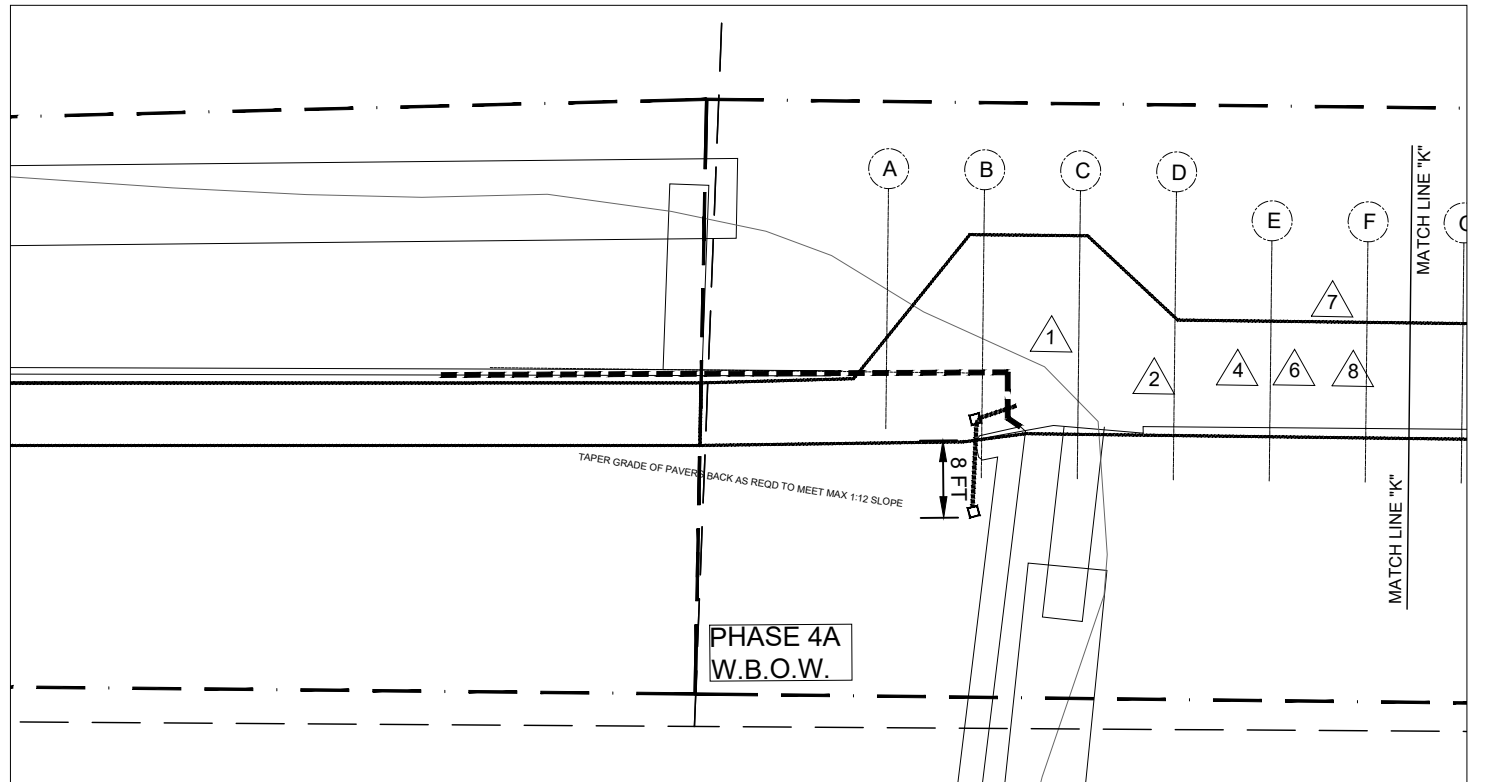
MARSHWALK REPAIR ASSESSMENT
MARSHWALK & VETERANS PIER
MURRELLS INLET, SC
PREPARED FOR
GEORGETOWN COUNTY
PHASES 2 & 3A - STR.

ADDITIONS, SUBMITTALS & REVISIONS			
NO.	DATE	DESCRIPTION	BY
1	#####	#####	###
2	#####	#####	###
3	#####	#####	###
4	#####	#####	###
5	#####	#####	###
6	#####	#####	###
7	#####	#####	###
8	#####	#####	###

ALL RIGHTS RESERVED. The EARTHWORKS Group is hereby known as EW Inc. The User agrees not to use this document, in whole or part, for any purpose or project other than the project, which is the subject of this Agreement. User agrees to waive all claims against EW Inc. resulting in any way from unauthorized changes or reuse of this document by anyone other than EW Inc. in addition, User agrees, to the fullest extent permitted by law, to indemnify and hold EW Inc. harmless from any damages, liability, costs, including reasonable attorney's fees and costs of defense arising from any changes made by anyone other than EW Inc. or from any reuse of the document without the prior written consent of EW, Inc. or the architect/engineer's written consent. This drawing, and the design shown, is the property of EW. The reproduction or use of this drawing without the architect's/engineer's written consent is prohibited and any infringement is subject to legal action.



PHASES 3B & 3C
SCALE: 1" = 20'

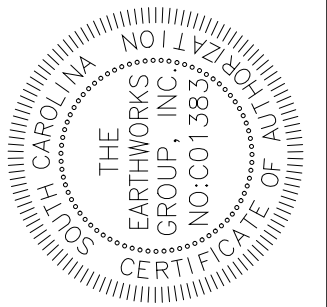
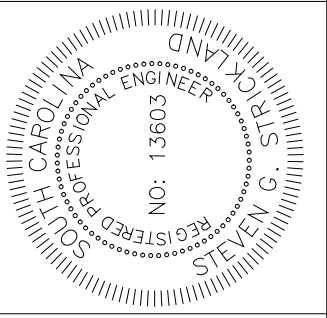


PHASES 4A
SCALE: 1" = 20'

- 1 REMOVE AND REPLACE WOOD DECKING
- 2 REMOVE AND REPLACE WOOD RAILS
- 3 REPAIR WOOD JOISTS AS NEEDED
- 4 ADD SS CONNECTORS TO JOIST / PILECAP AS NEEDED
- 5 REMOVE AND REPLACE INSIDE RAILS
- 6 REPLACE TOP CAP RAIL WHERE DAMAGED
- 7 REPLACE MID AND BOTTOM RAIL WHERE DAMAGED
- 8 REMOVE & REPLACE GALV. BOLTS WHERE DAMAGED

EARTHWORKS
planning and design consultants

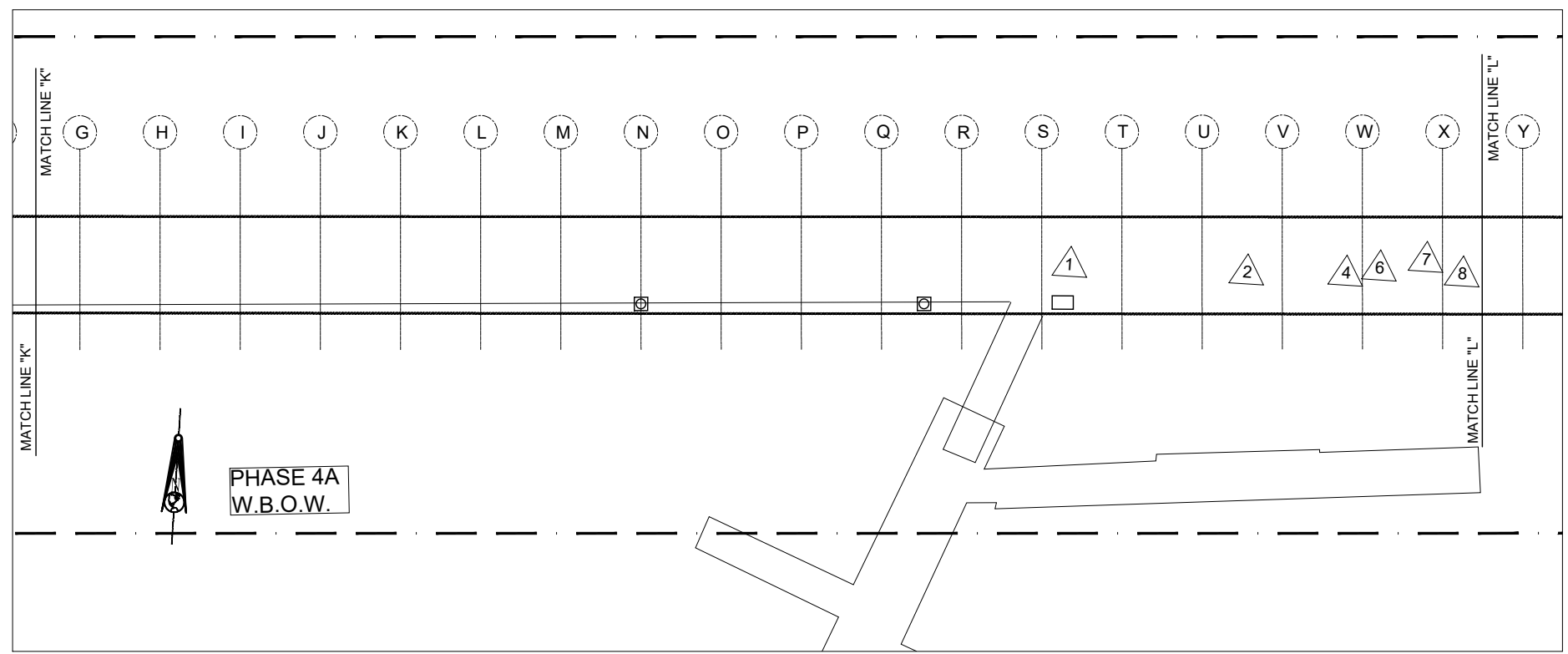
11655 HIGHWAY 707
MURRELLS INLET, SC 29576
843.651.7900
(FAX) 843.651.7903
www.earthworksgroup.com



MARSHWALK REPAIR ASSESSMENT
MARSHWALK & VETERANS PIER
MURRELLS INLET, SC
PREPARED FOR
GEORGETOWN COUNTY
PHASES 3B, 3C, & 4A - STR.

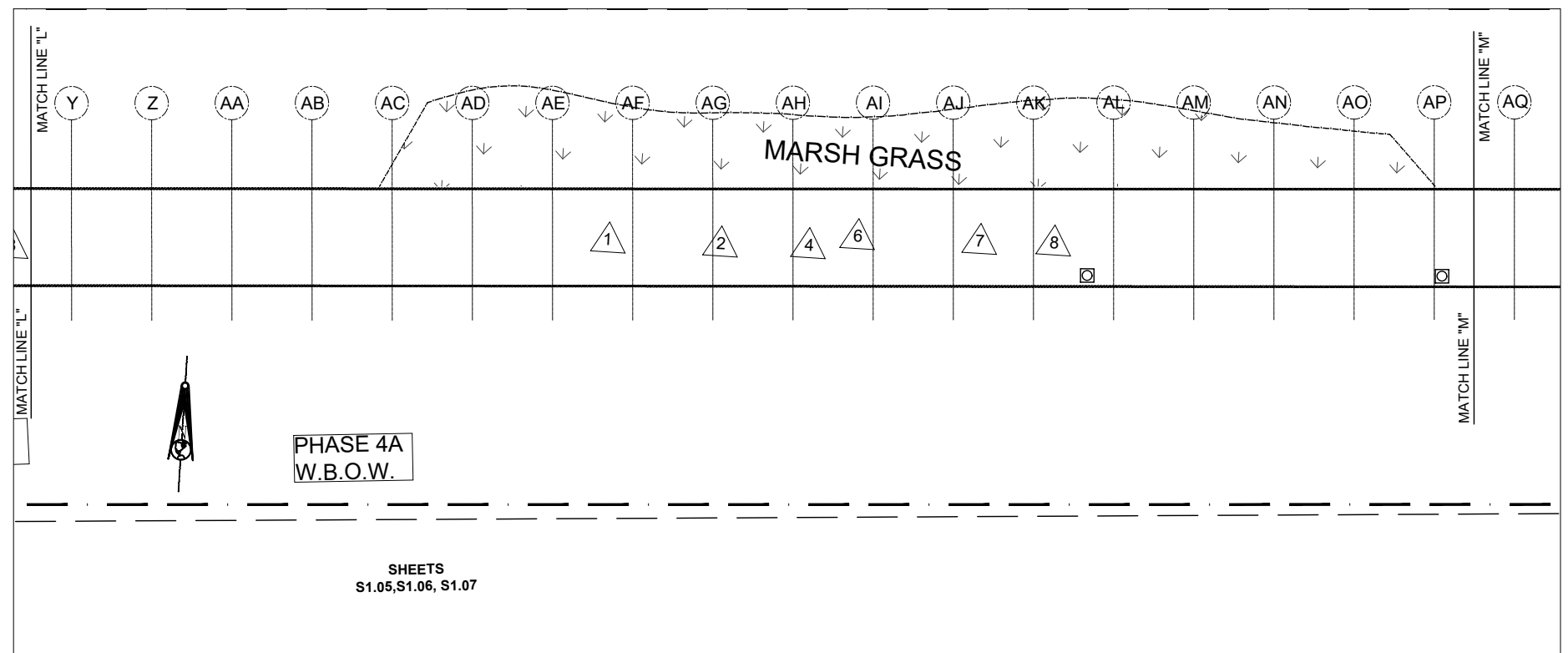
ADDITIONS, SUBMITTALS & REVISIONS			
NO.	DATE	DESCRIPTION	BY
1	#####	#####	###
2	#####	#####	###
3	#####	#####	###
4	#####	#####	###

ALL RIGHTS RESERVED. The EARTHWORKS Group is hereby known as EW Inc. The User agrees not to use this document, in whole or part, for any purpose or project other than the project, which is the subject of this Agreement. User agrees to waive all claims against EW Inc. resulting in any way from unauthorized changes or reuse of this document by anyone other than EW Inc. in addition, User agrees, to the fullest extent permitted by law, to indemnify and hold EW Inc. harmless from any damages, liability, costs, including reasonable attorney's fees and costs of defense arising from any changes made by anyone other than EW Inc. or from any reuse of the document without the prior written consent of EW Inc. or the architect/engineer's written consent is prohibited and any infringement is subject to legal action. This drawing, and the design shown, is the property of EW. The reproduction or use of this drawing without the architect's/engineer's written consent is prohibited and any infringement is subject to legal action.



PHASE 4A
SCALE: 1" = 20'

- 1 REMOVE AND REPLACE WOOD DECKING
- 2 REMOVE AND REPLACE WOOD RAILS
- 3 REPAIR WOOD JOISTS AS NEEDED
- 4 ADD SS CONNECTORS TO JOIST / PILECAP AS NEEDED
- 5 REMOVE AND REPLACE INSIDE RAILS
- 6 REPLACE TOP CAP RAIL WHERE DAMAGED
- 7 REPLACE MID AND BOTTOM RAIL WHERE DAMAGED
- 8 REMOVE & REPLACE GALV. BOLTS WHERE DAMAGED

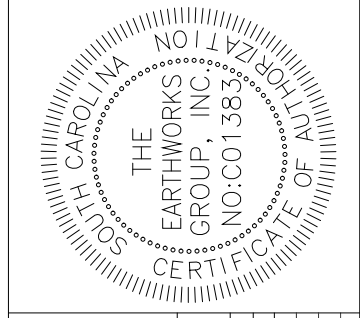
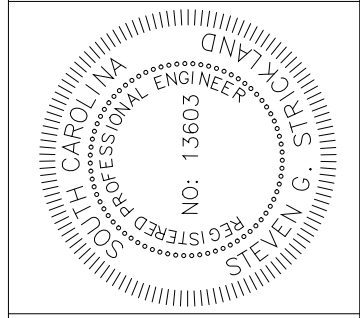


SHEETS
S1.05, S1.06, S1.07

PHASE 4A
SCALE: 1" = 20'

EARTHWORKS
planning and design consultants

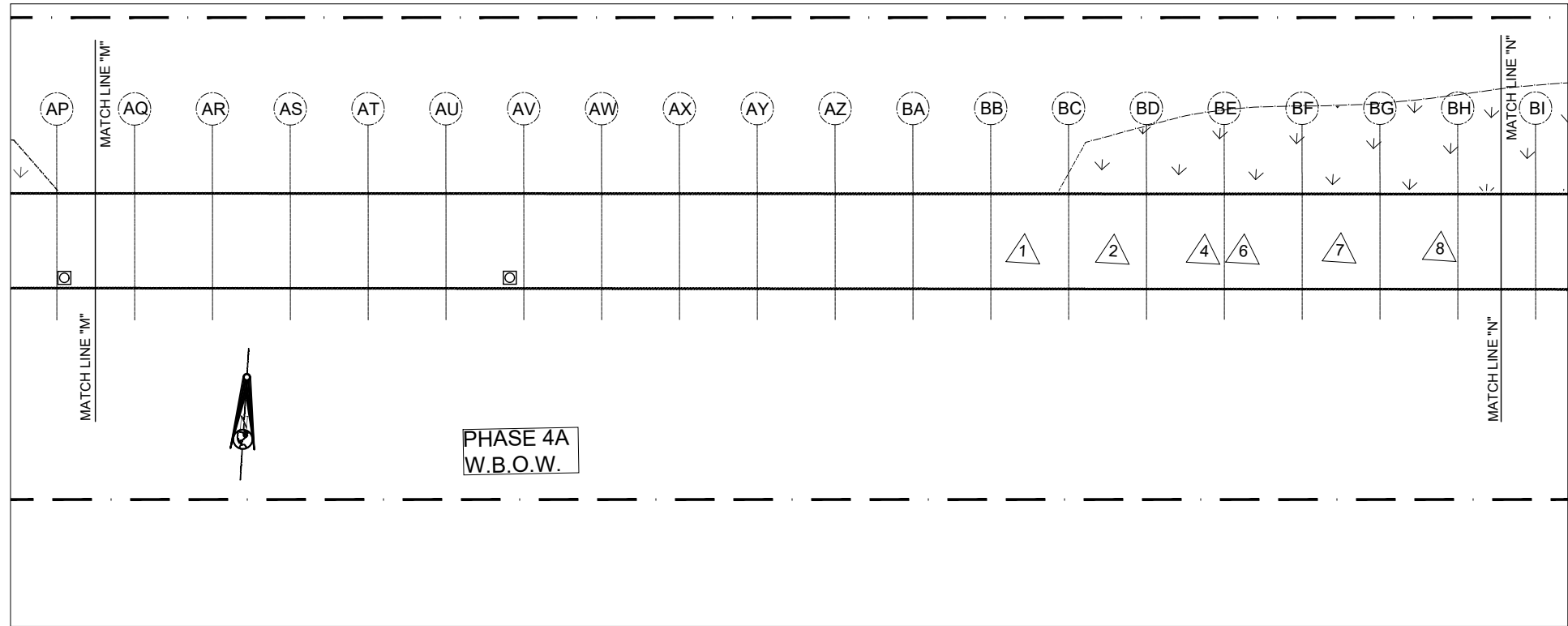
11655 HIGHWAY 707
MURRELLS INLET, SC 29576
843.651.7900
(FAX) 843.651.7903
www.earthworksgroup.com



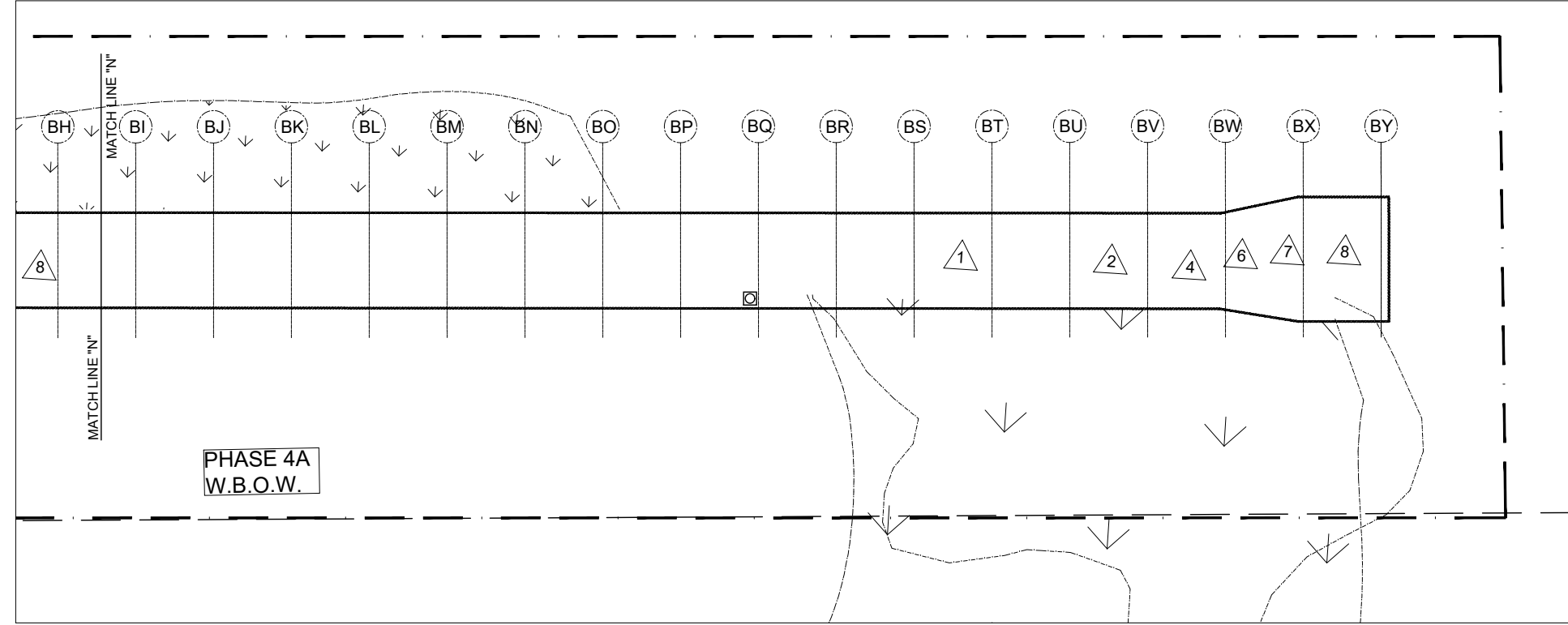
MARSHWALK REPAIR ASSESSMENT
MARSHWALK & VETERANS PIER
MURRELLS INLET, SC
PREPARED FOR
GEORGETOWN COUNTY
PHASES 4A - STR.

ADDITIONS, SUBMITTALS & REVISIONS			
NO.	DATE	DESCRIPTION	BY
1	#####	#####	###
2	#####	#####	###
3	#####	#####	###
4	#####	#####	###

ALL RIGHTS RESERVED. The EARTHWORKS Group is hereby known as EW Inc. The User agrees not to use this document, in whole or part, for any purpose or project other than the project, which is the subject of this Agreement. User agrees to waive all claims against EW Inc. resulting in any way from unauthorized changes or reuse of this document by anyone other than EW Inc. in addition, User agrees, to the fullest extent permitted by law, to indemnify and hold EW Inc. harmless from any damages, liability or costs, including reasonable attorney fees and costs of defense arising from any changes made by anyone other than EW Inc. from any reuse of the document without the prior written consent of EW, Inc. or the architect/engineer's written consent is prohibited and any infringement is subject to legal action.



PHASE 4A
SCALE: 1" = 20'



PHASE 4A
SCALE: 1" = 20'

- 1 REMOVE AND REPLACE WOOD DECKING
- 2 REMOVE AND REPLACE WOOD RAILS
- 3 REPAIR WOOD JOISTS AS NEEDED
- 4 ADD SS CONNECTORS TO JOIST / PILECAP AS NEEDED
- 5 REMOVE AND REPLACE INSIDE RAILS
- 6 REPLACE TOP CAP RAIL WHERE DAMAGED
- 7 REPLACE MID AND BOTTOM RAIL WHERE DAMAGED
- 8 REMOVE & REPLACE GALV. BOLTS WHERE DAMAGED

EARTHWORKS
Planning and design consultants

11655 HIGHWAY 707
MURRELLS INLET, SC 29576
843.651.7900
(FAX) 843.651.7903
www.earthworksgroup.com

SOUTH CAROLINA REGISTERED PROFESSIONAL ENGINEER
NO: 13603
STEVEN G. STRICKLAND

SOUTH CAROLINA REGISTERED PROFESSIONAL ENGINEER
NO: C01383
THE EARTHWORKS GROUP, INC.
CERTIFICATE OF AUTHORIZATION

MARSHWALK REPAIR ASSESSMENT
MARSHWALK & VETERANS PIER
MURRELLS INLET, SC
PREPARED FOR
GEORGETOWN COUNTY
PHASES 4A - STR.

ADDITIONS, SUBMITTALS & REVISIONS			
NO.	DATE	DESCRIPTION	BY
1	#####	#####	###
2	#####	#####	###
3	#####	#####	###
4	#####	#####	###