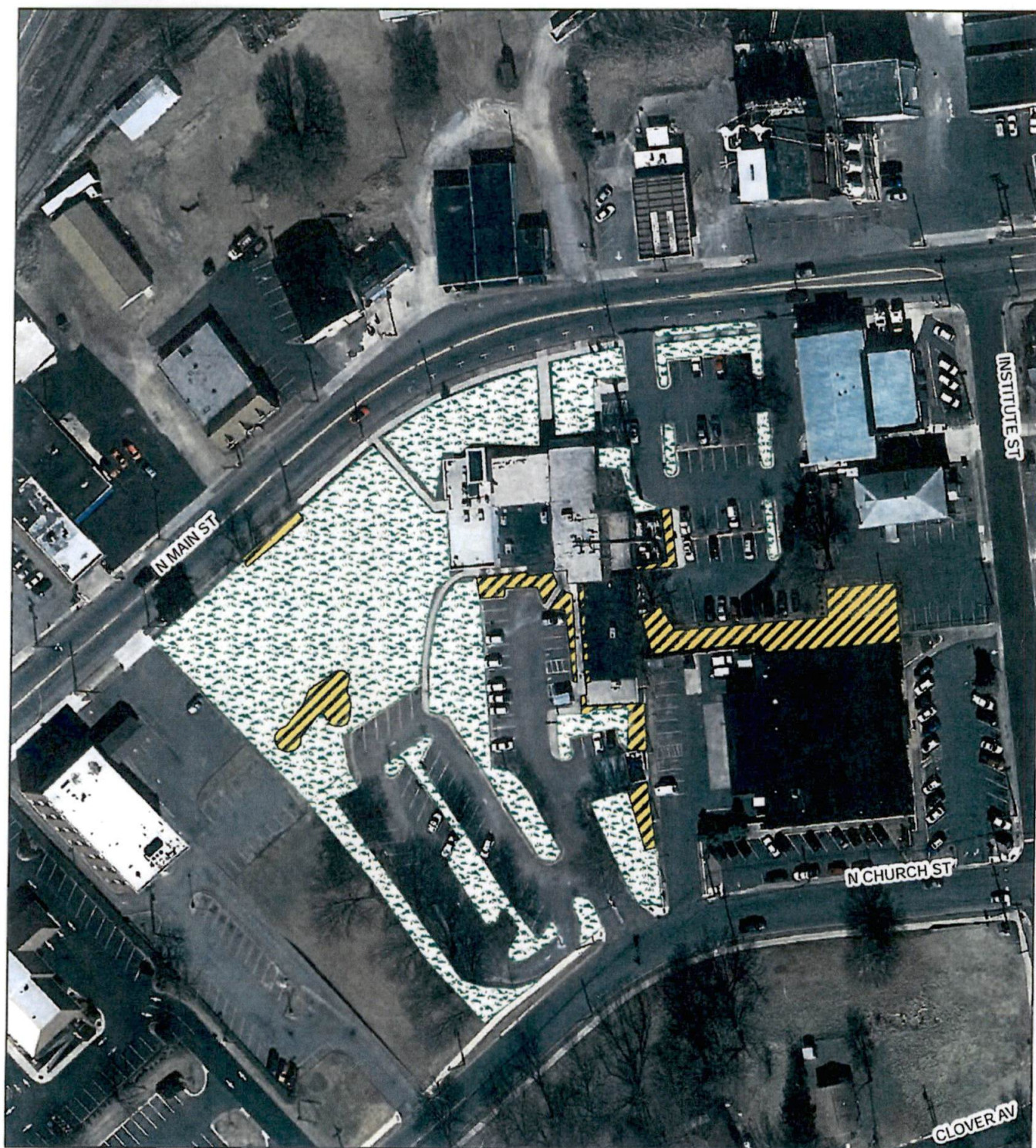



Town Hall




Building	Grass Area (AC)	Mulch Area (SF)
Town Hall	1.35	11,786

Legend

Open Space

 Grass Areas

 Mulched Areas

Charles Mack Citizens Center²



CMCC

Approximate Mulched Area - 14393 sqft

Legend

Open Space



Grass Areas



Mulched Areas

Library

3





Library

Approximate Grass Area - 1.01ac
Approximate Mulch Area - 0.26ac

Legend

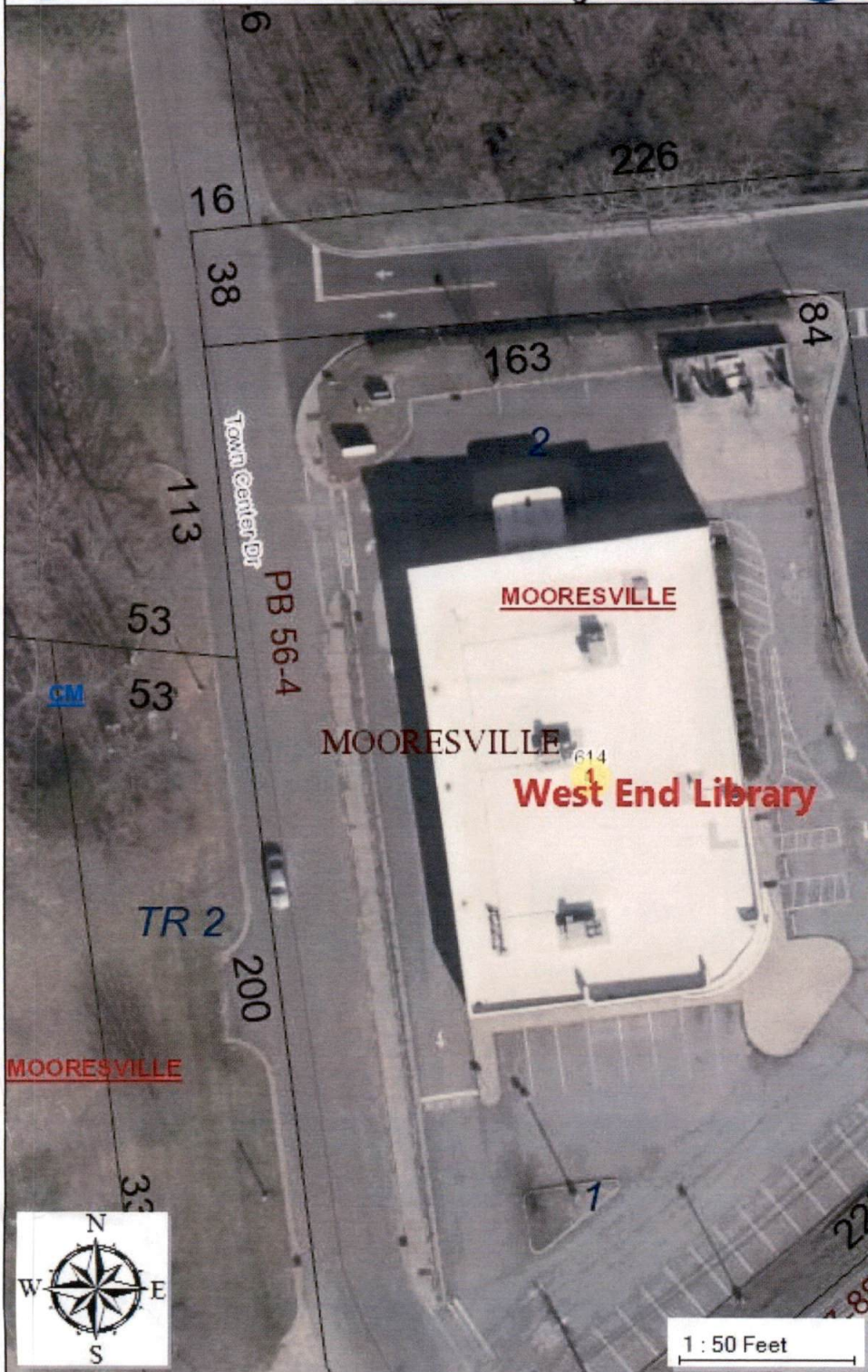
Open Areas

Id

-  Grass Area
-  Mulched Area



Iredell
Printed May 12, 2022
See Below for Disclaimer



The maps prepared for this website are generated from recorded deeds, plats, and other public records. Users of these maps are hereby notified that the information provided herein should be verified. Iredell County assumes no legal responsibilities for any of the information contained on this site. Users are advised that the use of any of this information is at their own risk. All maps on this site were prepared using a 1000â€™ Grid based upon the North Carolina State Plane Coordinate System from the 1983 North American Datum. The delinquent real property tax overlay is updated monthly. The information presented is not intended to be used or relied upon as official notice of tax liens. For additional information regarding delinquent taxes, contact the Iredell County Tax Collector's Office.




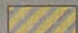
Police Department

2847 Charlotte Hwy

0 50 100 200 Feet

Legend

Open Areas

-  Grass Area
-  Mulched Area

Police Annex

4



Police Annex

Approximate Weekly Mow Area - 0.31ac

Legend

Open Space



Weekly Mow

Public Services - Fleet

5





Public Services - Fleet
Approximate Grass Area - 2.17ac
Approximate Mulch Area - 0.54ac

Legend

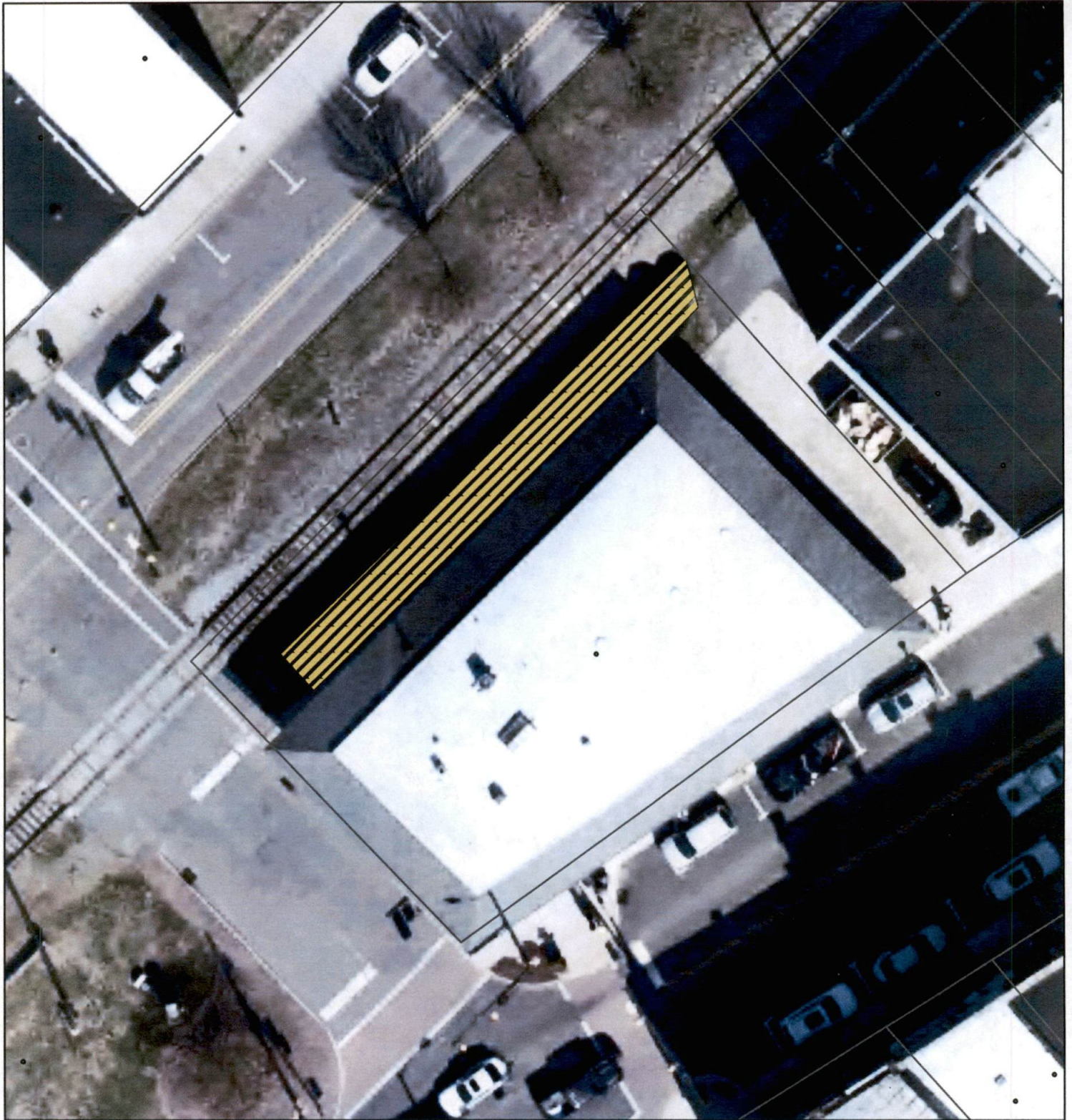
Open Areas

Id

-  Grass Area
-  Mulched Area

Art Depot

6



Art Depot

Approximate Mulched Area - 926 sqft

Legend

Open Space

Id



Grass Area



Mulched Area



Fire Station 1

457 North Main Street

0 12.5 25 50 Feet

Legend

Open Areas

- Grass Area
- Mulched Area





Fire Station 2

186 Knob Hill Road

0 25 50 100 Feet

Legend

Open Areas

-  Grass Area
-  Mulched Area



Fire Station 3

1023 Shearers Road

0 25 50 100 Feet

Legend

Open Areas

- Grass Area
- Mulched Area



Fire Station 5

125 Balmy Lane

0 25 50 100 Feet

Legend

Open Areas

- Grass Area
- Mulched Area



Fire Station 6

115 Manufacturers Blvd

0 25 50 100 Feet
|-----|-----|-----|-----|

Legend

Open Areas

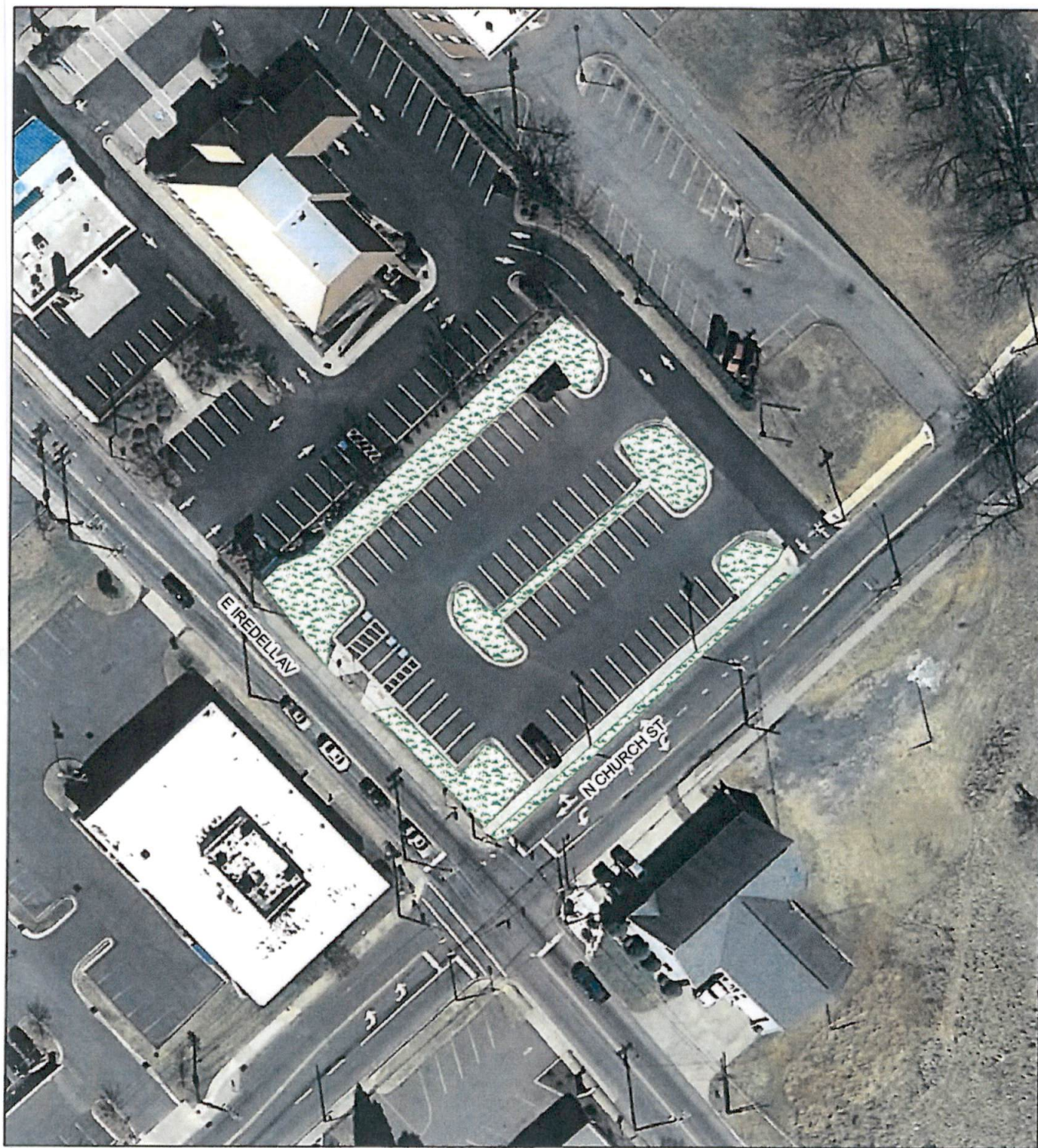


Grass Area



Mulched Area


Public Parking Lot at Church St & Iredell

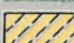


Building	Grass Area (AC)	Mulched Area (SF)
Church Street Parking Lot	0.16	0.00

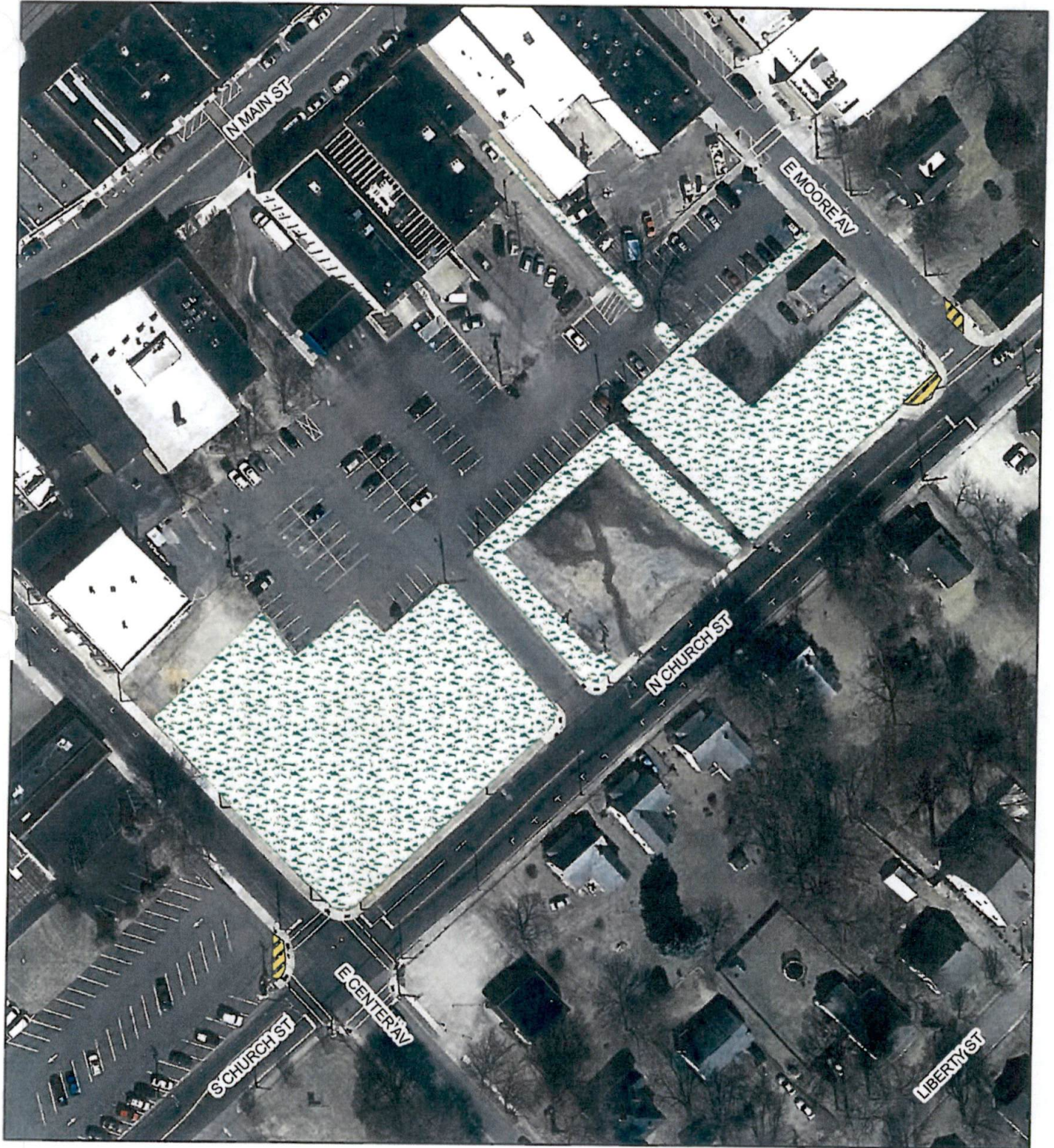
Legend

Open Space

 Grass Areas

 Mulched Areas



Church & Center Street



Area	Grass Area (AC)	Mulch Area (SF)
Church & Center	1.37	640

Legend

Open Space

-  Grass Areas
-  Mulched Areas


Exit 36- Hwy 150



Area	Grass Area (AC)	Mulch Area (SF)
Exit 36- Hwy 150	7.82	81,615

Legend

Open Space

-  Grass Areas
-  Mulched Areas

Exit 35 (Brawley School Road)



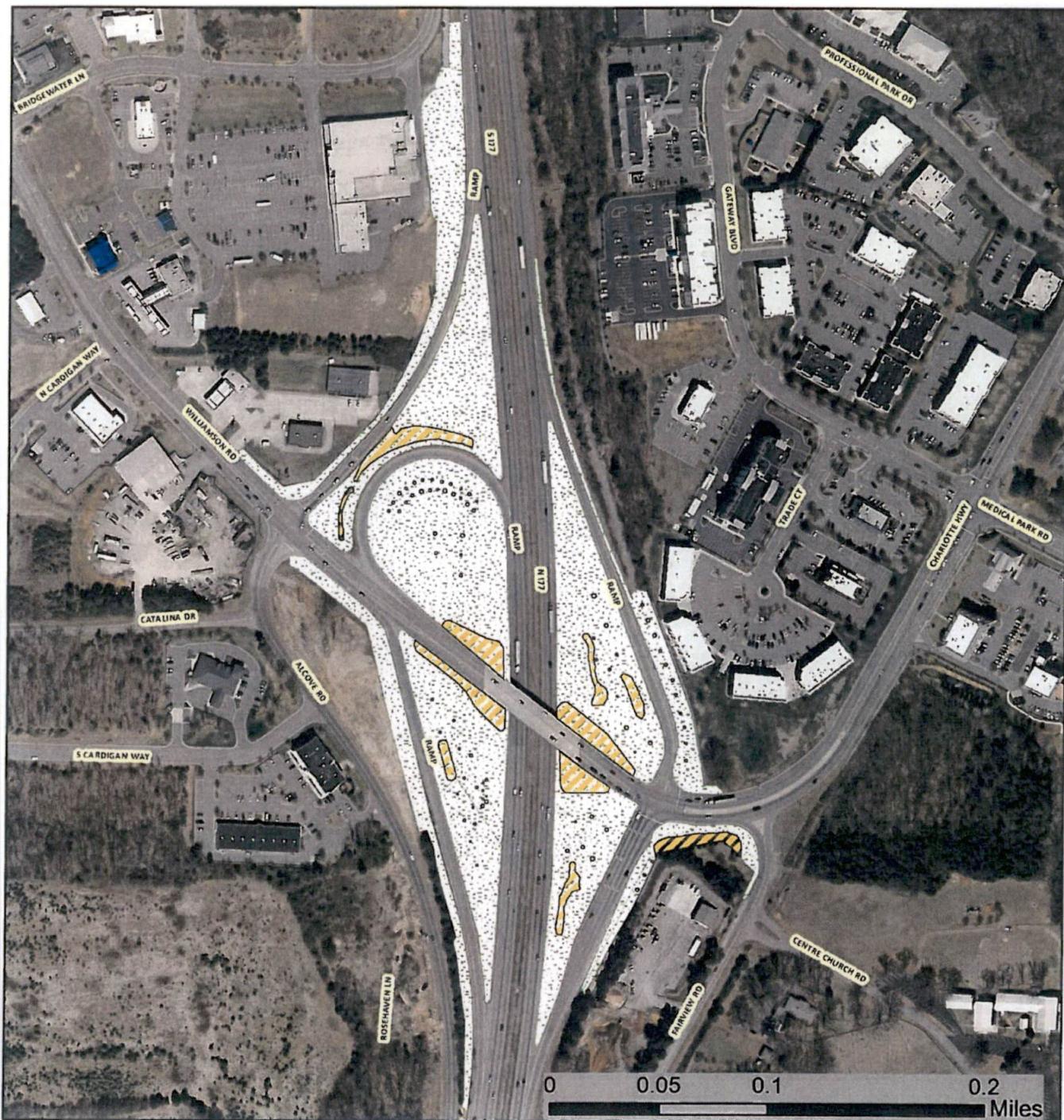
Area	Grass Area (AC)	Mulch Area (SF)
Exit 35 Brawley School Rd	4.26	72,648

Legend

Open Space

-  Grass Areas
-  Mulched Areas


Exit 33 (Hwy 21)




Area	Grass Area (AC)	Mulch Area (SF)
Exit 33 – Hwy 21	13.51	63,124

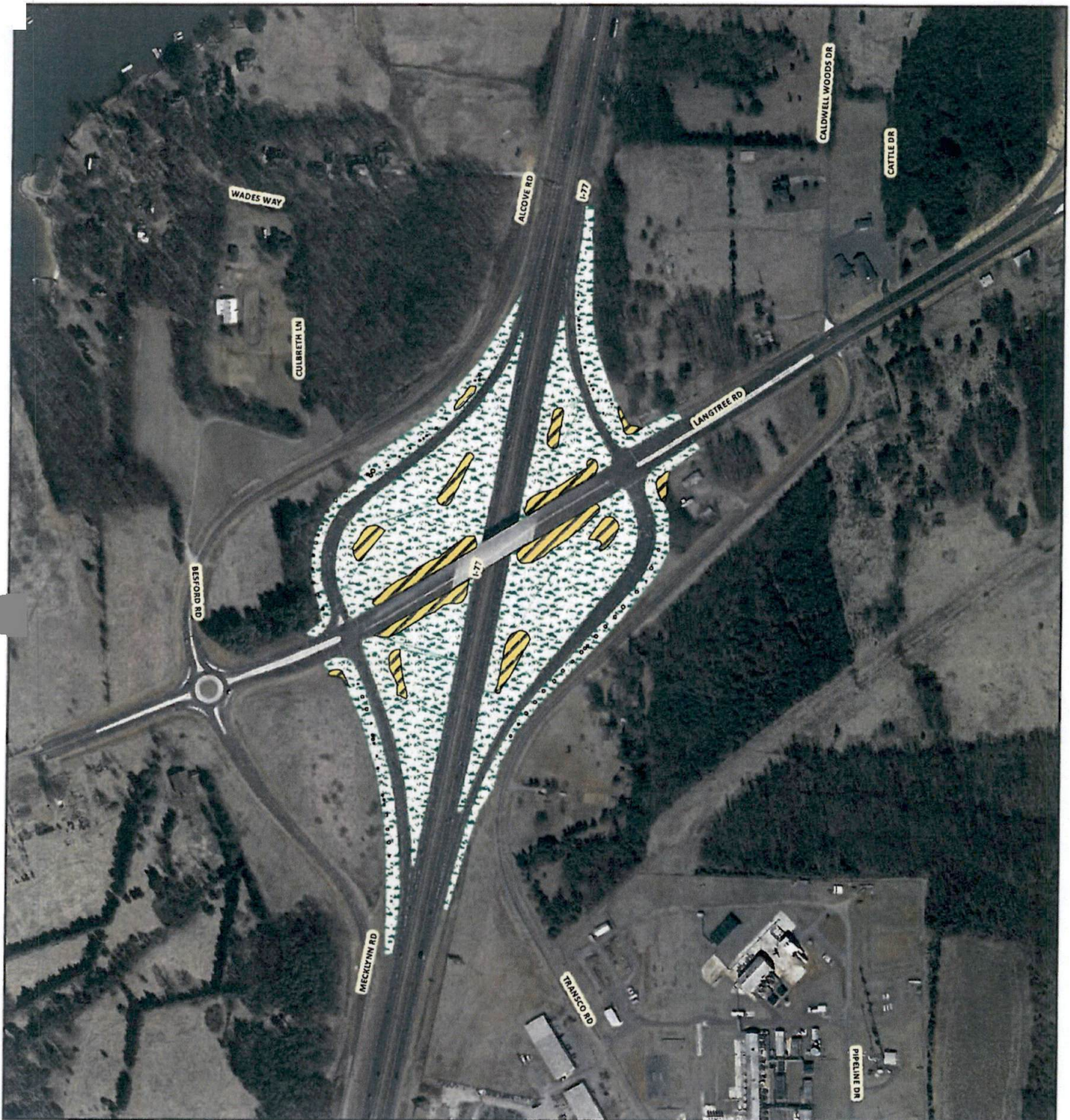
Legend

Open Space

 Grass Areas

 Mulched Areas


Exit 31- Langtree Rd




Area	Grass Area (AC)	Mulch Area (SF)
Exit 32- Langtree Rd	21.4	122,725

Legend

Open Space

 Grass Areas

 Mulched Areas


Hwy 150 & Hwy 21




Area	Grass Area (AC)	Mulch Area (SF)
Hwy 150 & Hwy 21	7.02	73,785

Legend

Open Space

 Grass Areas

 Mulched Areas

Broad Street @ Iredell Ave



Area	Grass Area (AC)	Mulch Area (SF)
Broad St @ Iredell Ave	0.67	0

Legend

Open Space

-  Grass Areas
-  Mulched Areas


S Broad Street @ McLelland Ave




Area	Grass Area (AC)	Mulch Area (SF)
S Broad Street @ McLelland Ave	0.2	0

Legend

Open Space

 Grass Areas

 Mulched Areas


Main Street




Building	Grass Area (AC)	Mulch Area (SF)
Main Street	0.00	14,046

Legend

Open Space

 Grass Areas

 Mulched Areas


S Broad Street @ Catawba Ave




Area	Grass Area (AC)	Mulch Area (SF)
S Broad Street @ Catawba Ave	0.49	0

Legend

Open Space

 Grass Areas

 Mulched Areas

S Broad/Main St To Brawley Ave



Area	Grass Area (AC)	Mulch Area (SF)
S Broad/Main St To Brawley Ave	1.22	0

Legend

Open Space



Grass Areas



Mulched Areas



Broad Street @ Moore Field



Area	Grass Area (AC)	Mulch Area (SF)
Broad St @ Moore Field	0	17,260

Legend

Open Space

-  Grass Areas
-  Mulched Areas



S Main to Norman Drive



Area	Grass Area (AC)	Mulch Area (SF)
S Main To Norman Drive	0.15	0

Legend

Open Space

-  Grass Areas
-  Mulched Areas

Norman Drive to Welcome Sign



Area	Grass Area (AC)	Mulch Area (SF)
Norman Drive to Welcome Sign	0.93	12,901

Legend

Open Space



Grass Areas



Mulched Areas

150 & 152 Intersection



Location	Grass Area (AC)
150_152 Intersection	0.15

Legend

Open Space



Grass Areas


Moore Field

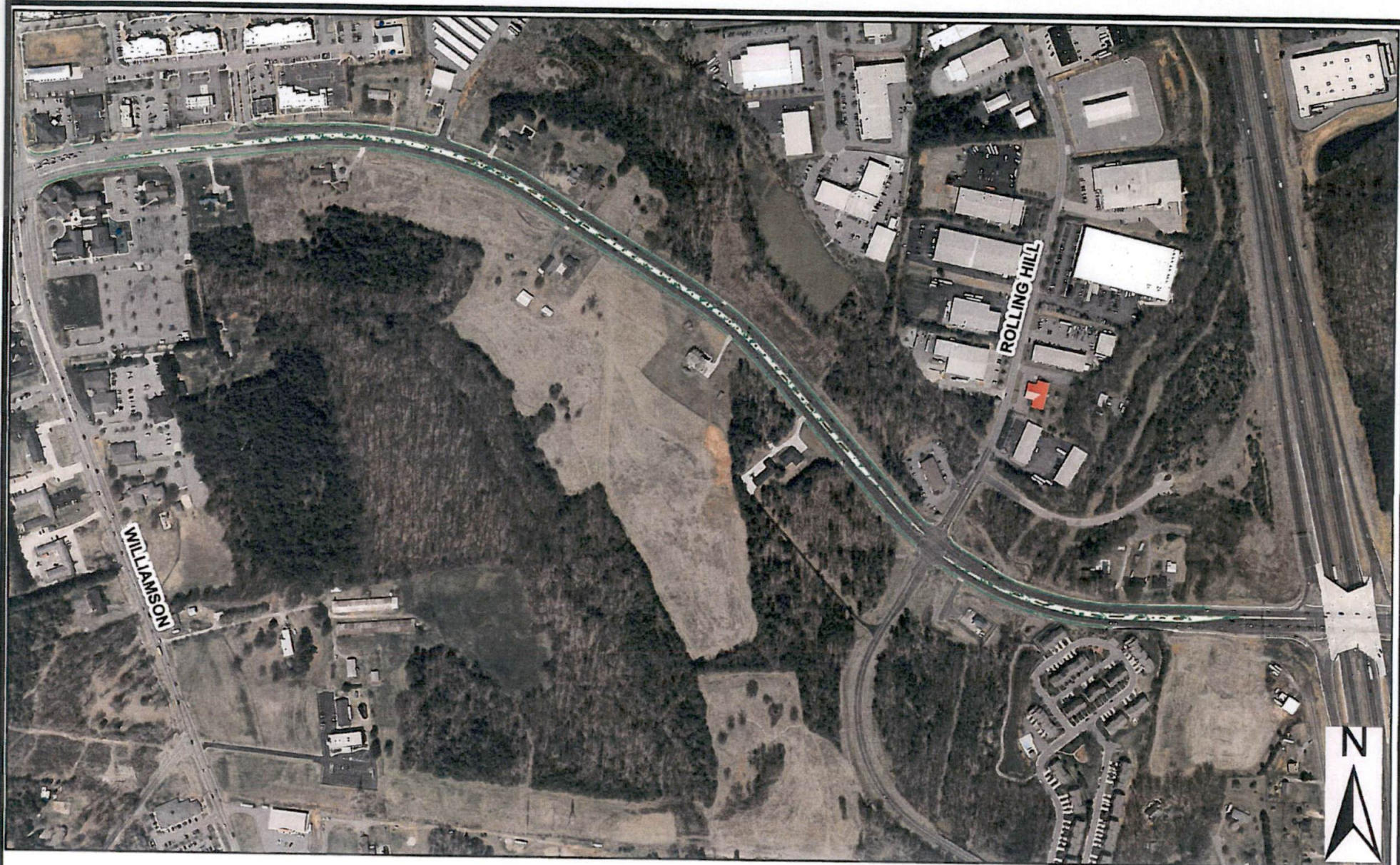


Location	Grass Area (AC)
Moore Field	0.07

Legend

Open Space

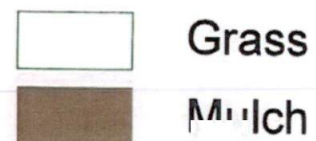
 Grass Areas



Brawley Sch. Rd Section 1

Section 1	Grass Area (AC)	Mulch Area (SF)
Area	2.73	9,086

Legend

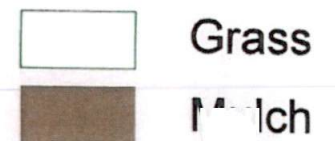




Brawley Sch. Rd Section 2

Section 2	Grass Area (AC)	Mulch Area (SF)
Area	1.98	2,960

Legend

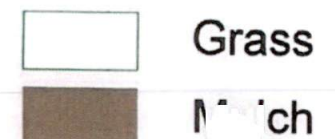


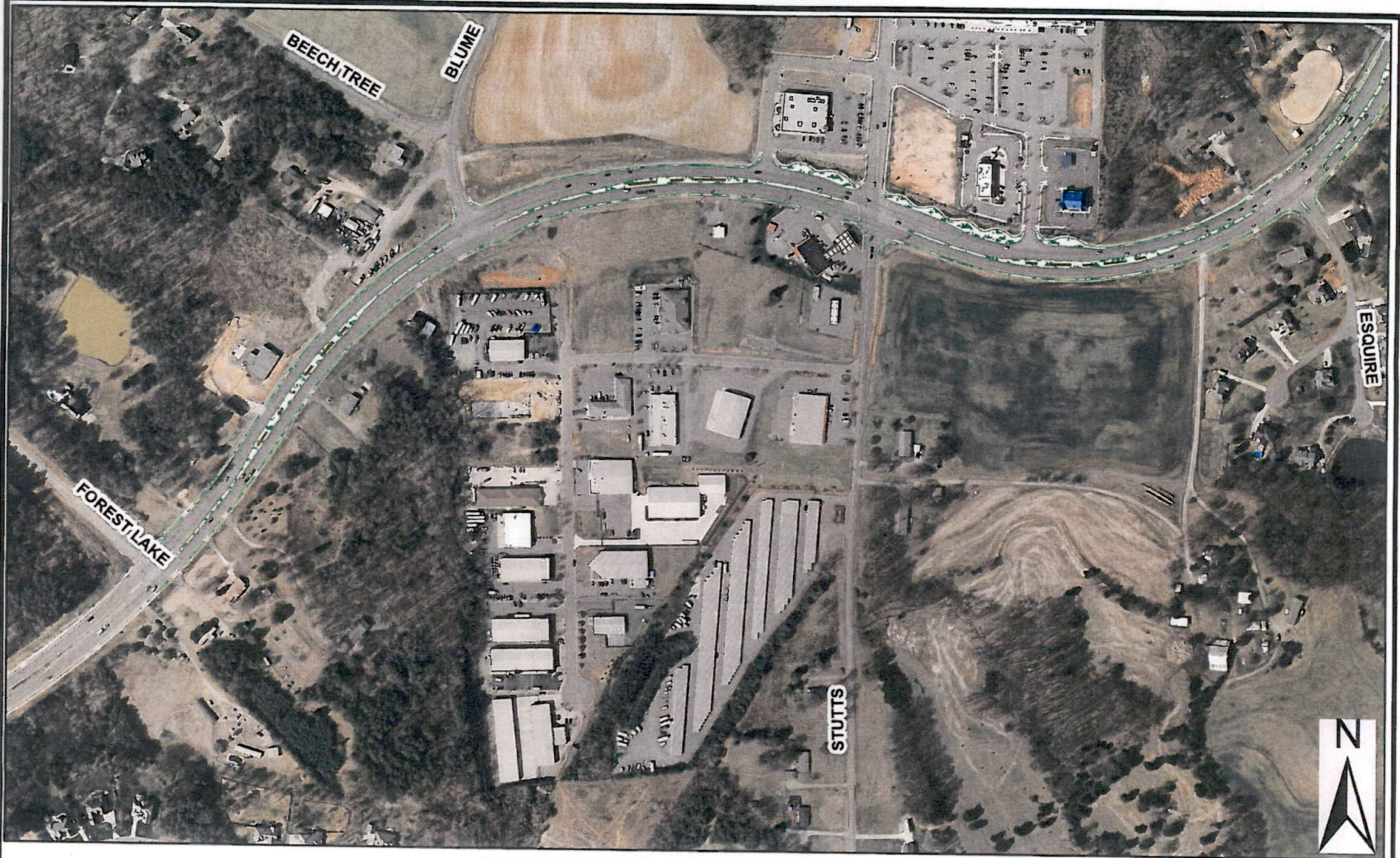


Brawley Sch. Rd **Section 3**

Section 3	Grass Area (AC)	Mulch Area (SF)
Area	1.94	6,353

Legend







Brawley Sch. Rd **Section 4**

Section 4	Grass Area (AC)	Mulch Area (SF)
Area	2.01	4,977

Legend

	Grass
	Mulch

Glenwood Cemetery



N



Location	Grass Area (acres)
Glenwood Cemetery	19.3

Legend

Open Space

Grass Areas

Mowed Monthly



Green Acres Cemetery



Green Acres Cemetery
Approximate Mowing Area - 3.16ac

Legend

Open Space



Weekly Mow

Willow Valley Cemetery



Location	Grass Area (acres)
Willow Valley Cemetery	8.4

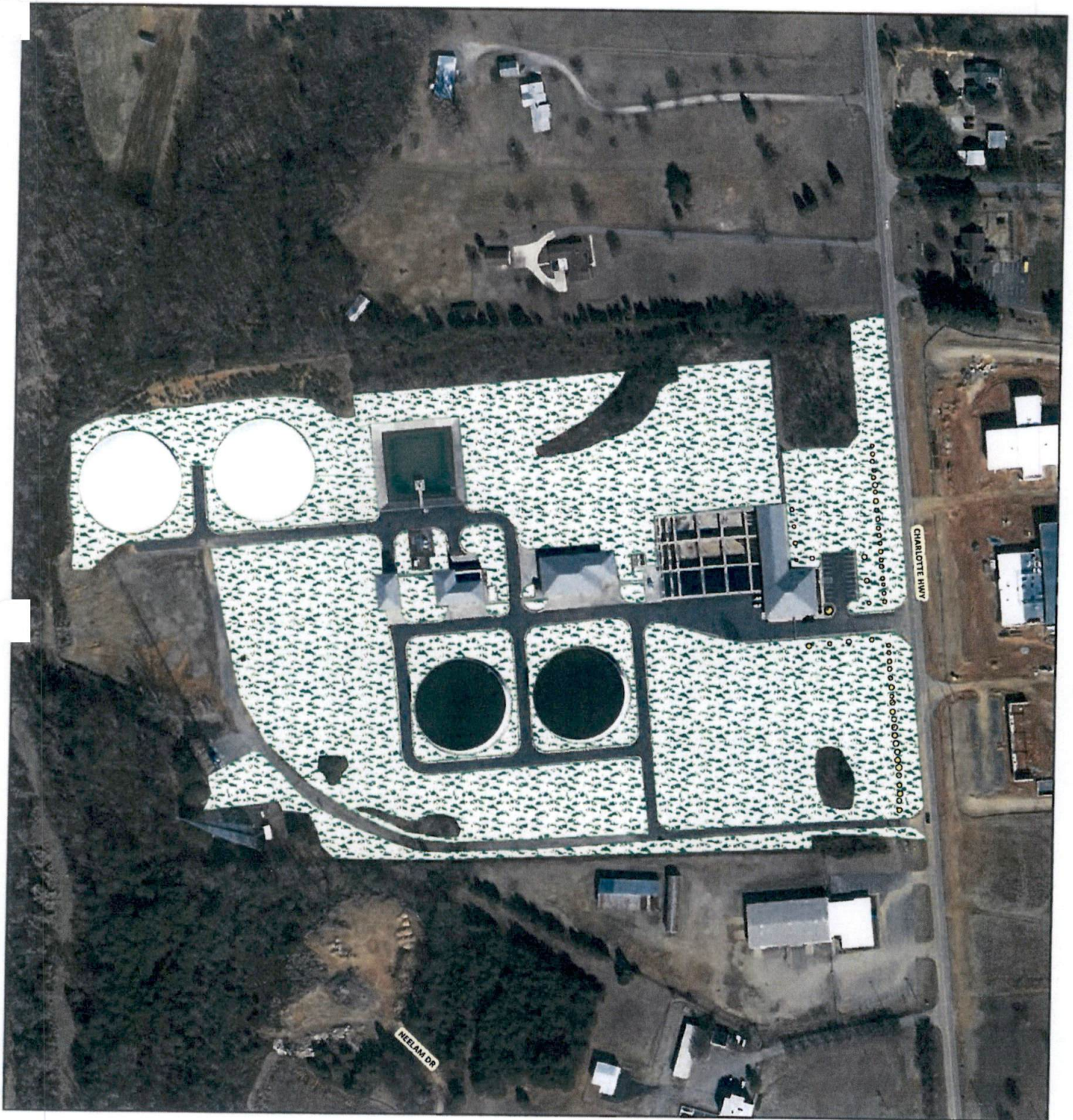
Legend

Open Space



Grass Areas


New Water Treatment Plant




Area	Grass Area (AC)	Mulch Area (SF)
New WTP	16.9	3,020

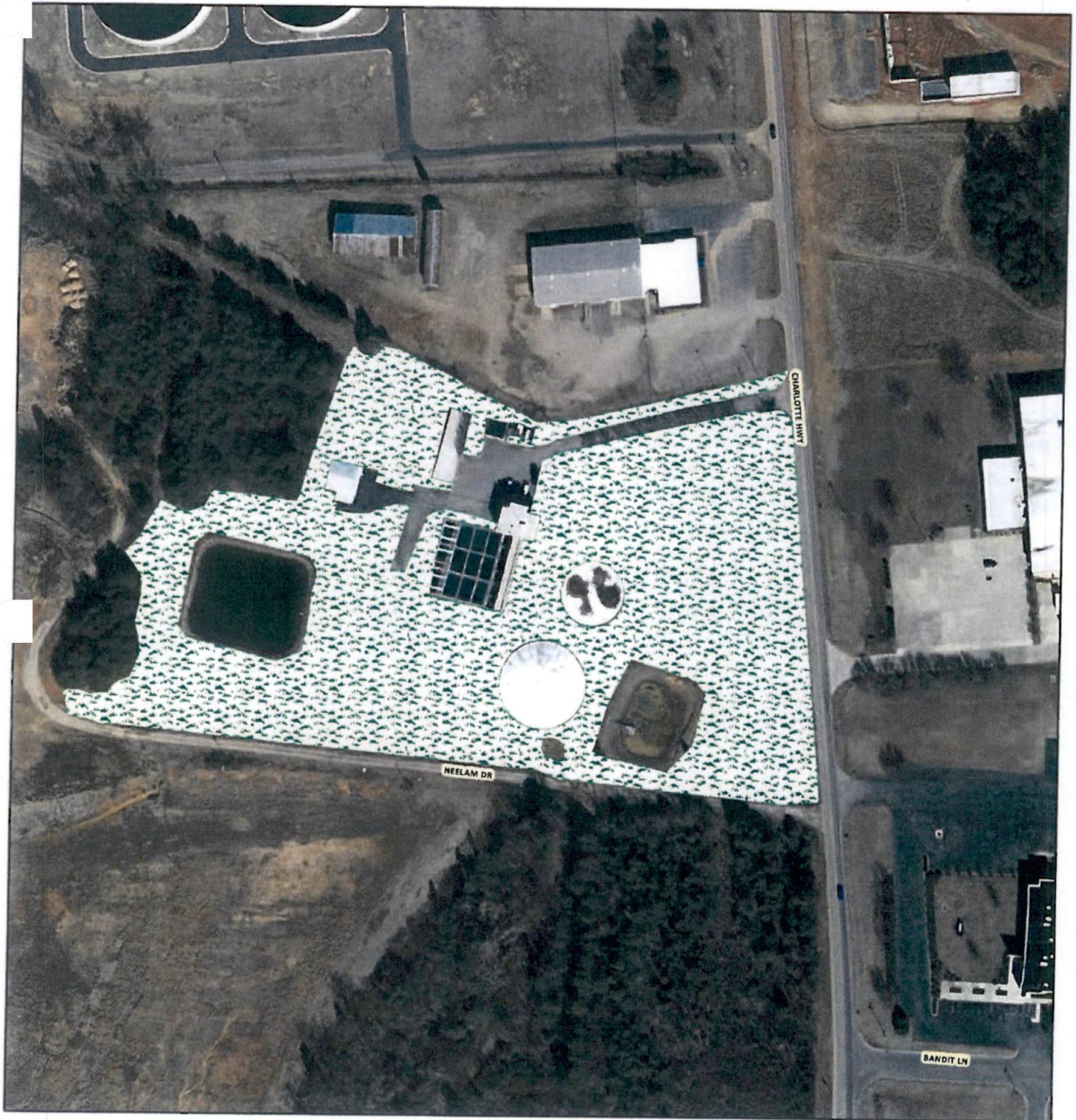
Legend

Open Space

 Grass Areas

 Mulched Areas


Old Water Treatment Plant




Area	Grass Area (AC)	Mulch Area (SF)
Old WTP	7.7	0

Legend

Open Space

 Grass Areas

 Mulched Areas


Rocky River WWTP



Area	Grass Area (AC)
Rocky River WWTP	13.61

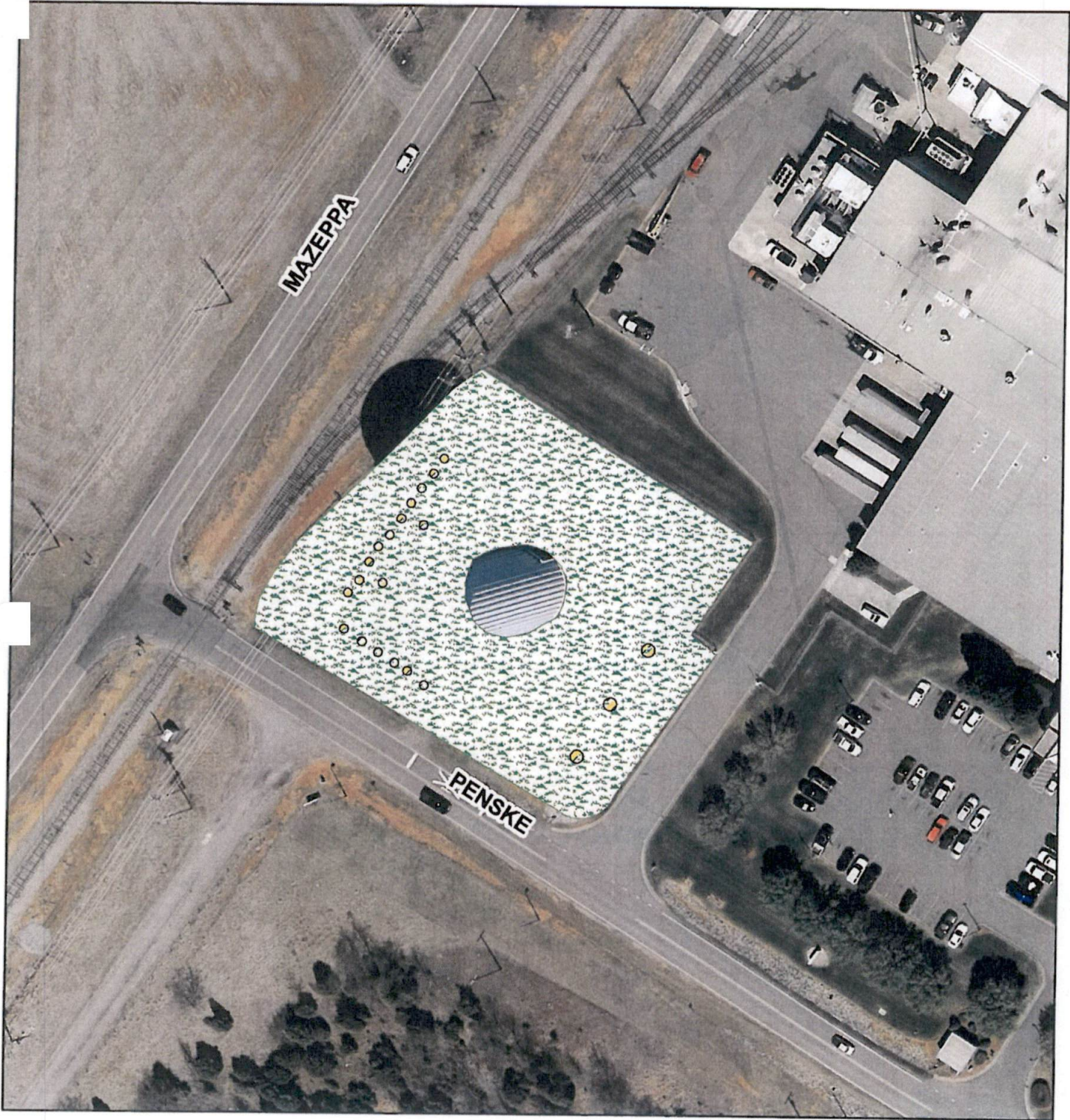
Legend

Open Space

 Grass Areas

Mazeppa

Water Tank




Area	Grass Area (AC)	Mulch Area (SF)
Penske Way Water Tank	0.985	530

Legend

Open Space

 Grass Areas

 Mulched Areas

Allison Park Water Tank



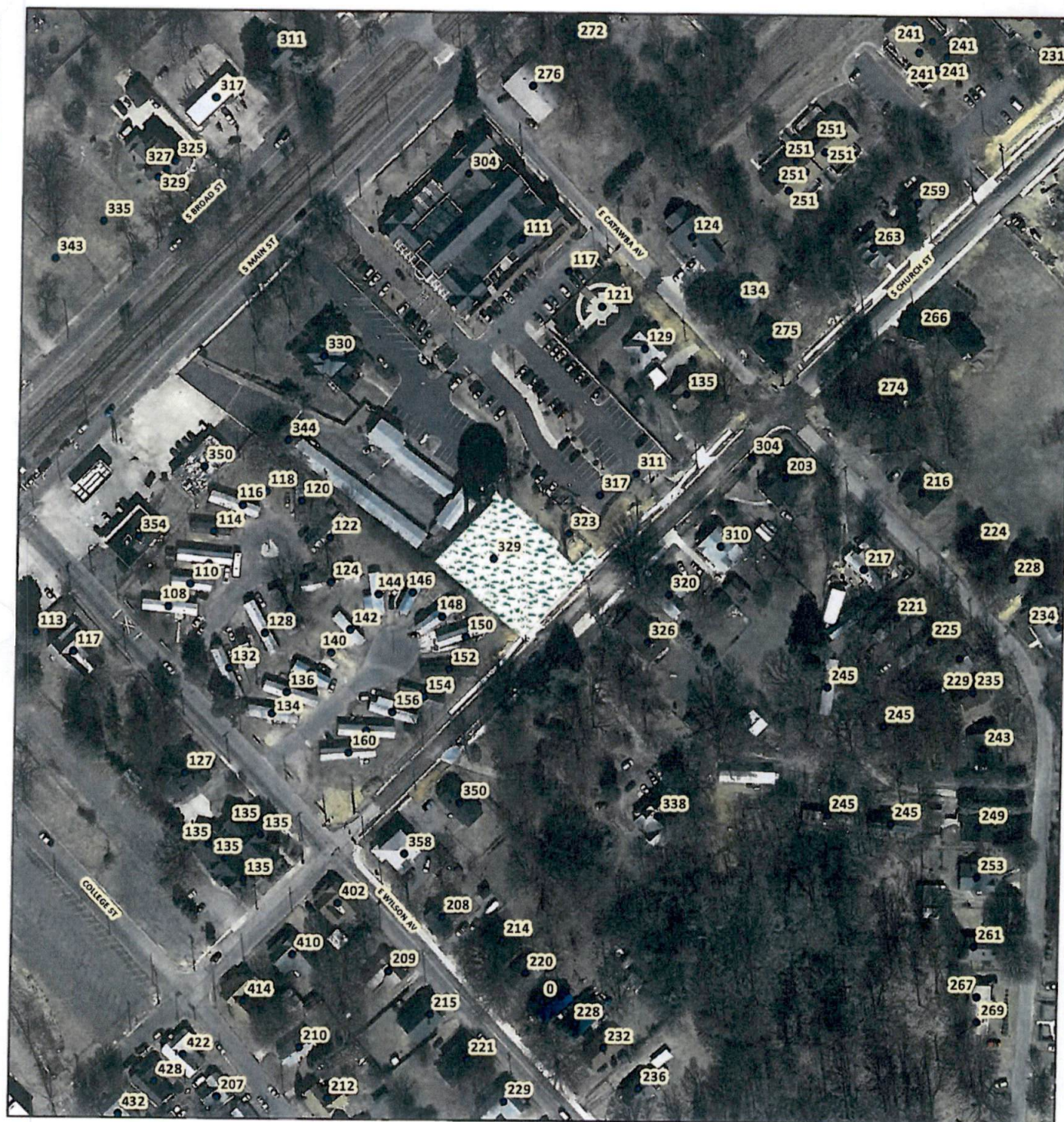
Area	Grass Area (AC)	Mulch Area (SF)
Allison Park Water Tank	0.53	2130

Legend

Open Space

-  Grass Areas
-  Mulched Areas


Church Street Water Tank




Area	Grass Area (AC)	Mulch Area (SF)
Church St. Water Tank	0.38	0

Legend

Open Space

 Grass Areas

 Mulched Areas



Exit 33- Water Tank



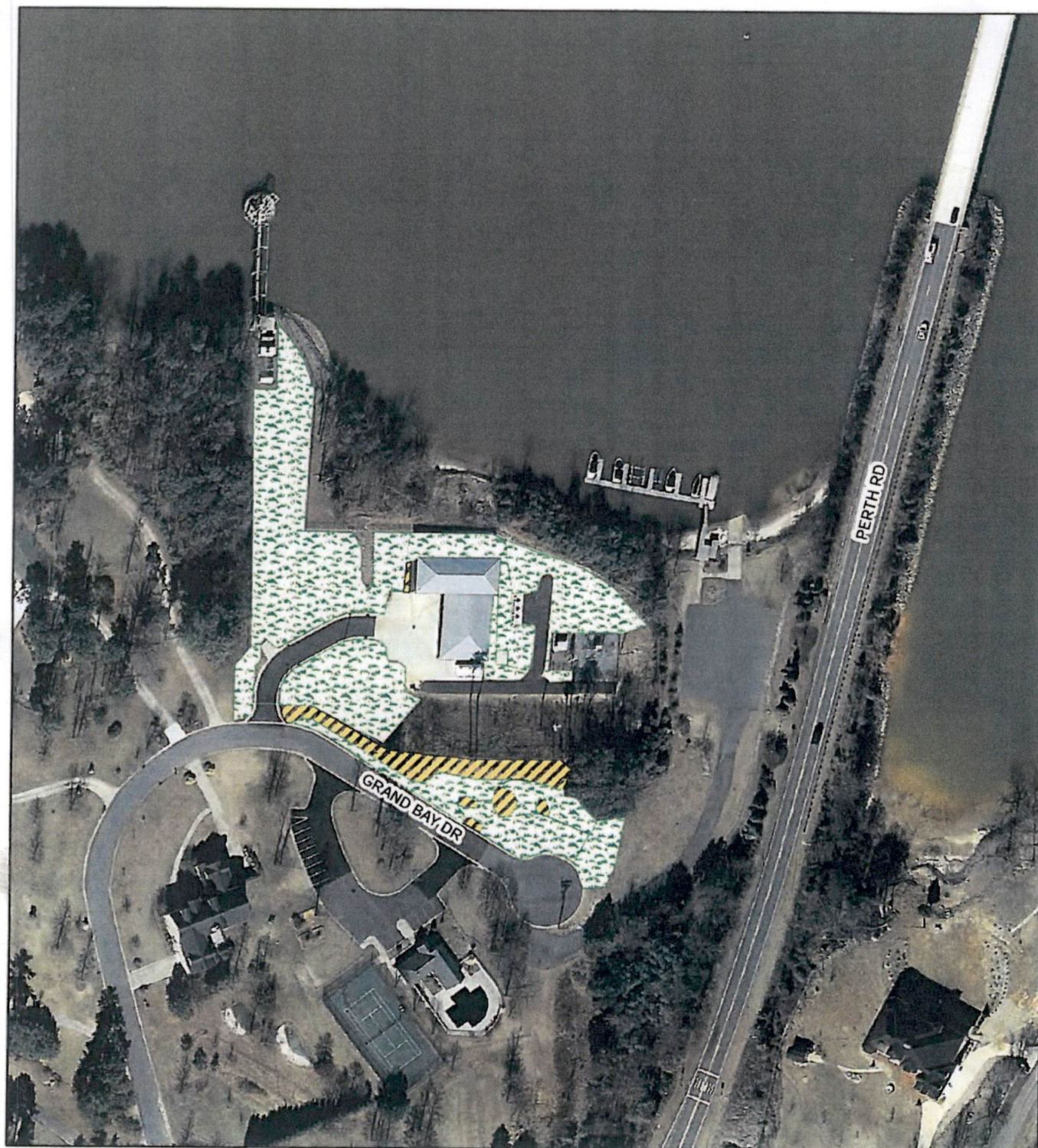
Area	Grass Area (AC)	Mulch Area (SF)
Exit 33 Tank	0.9	0

Legend

Open Space

-  Grass Areas
-  Mulched Areas


Raw Water Intake

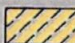


Building	Grass Area (AC)	Mulch Area (SF)
Raw Water Intake	1.22	6,383

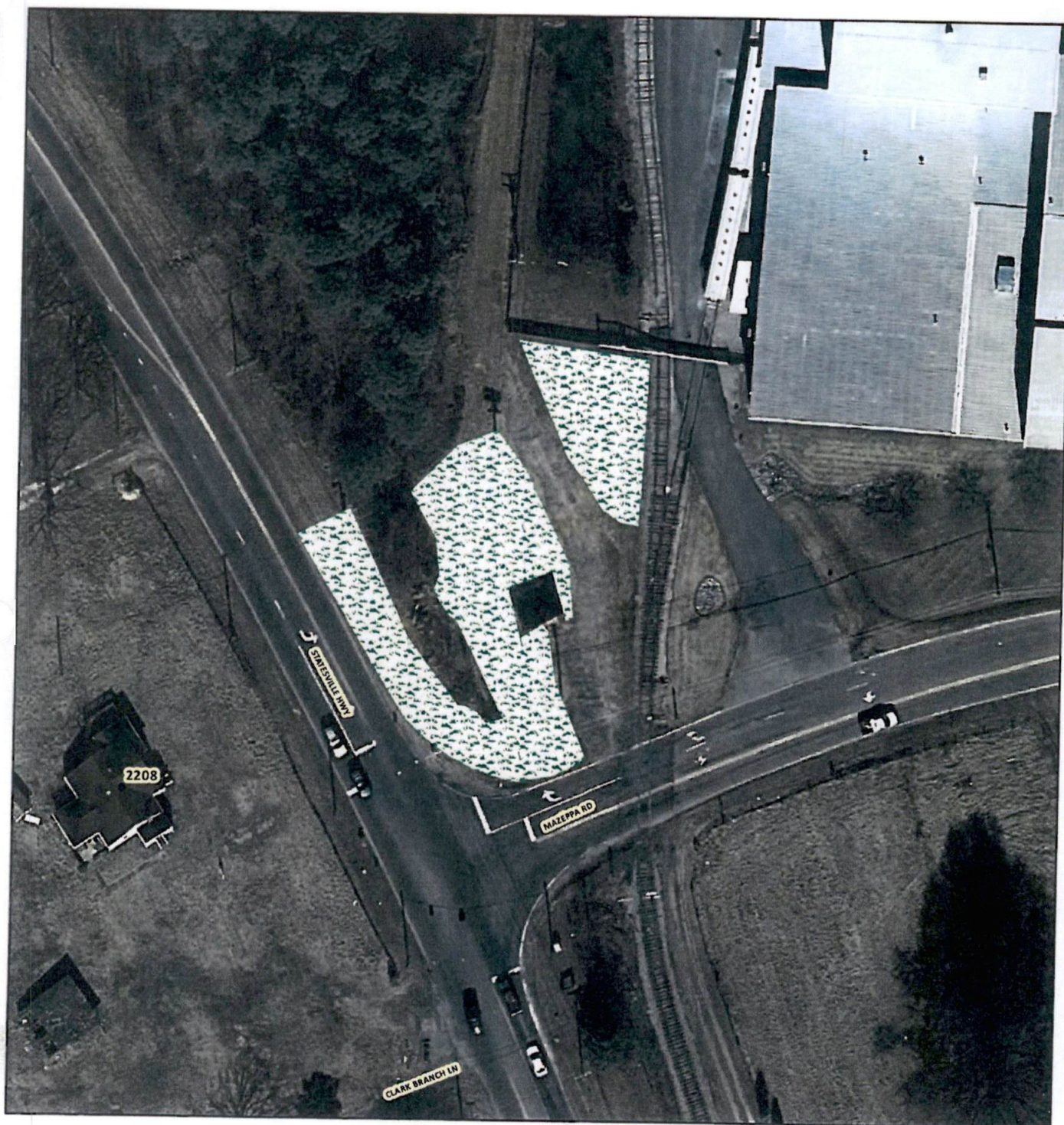
Legend

Open Space

 Grass Areas

 Mulched Areas


Mazeppa Rd Booster Station




Area	Grass Area (AC)	Mulch Area (SF)
Mazeppa Rd Booster Station	0.3	0

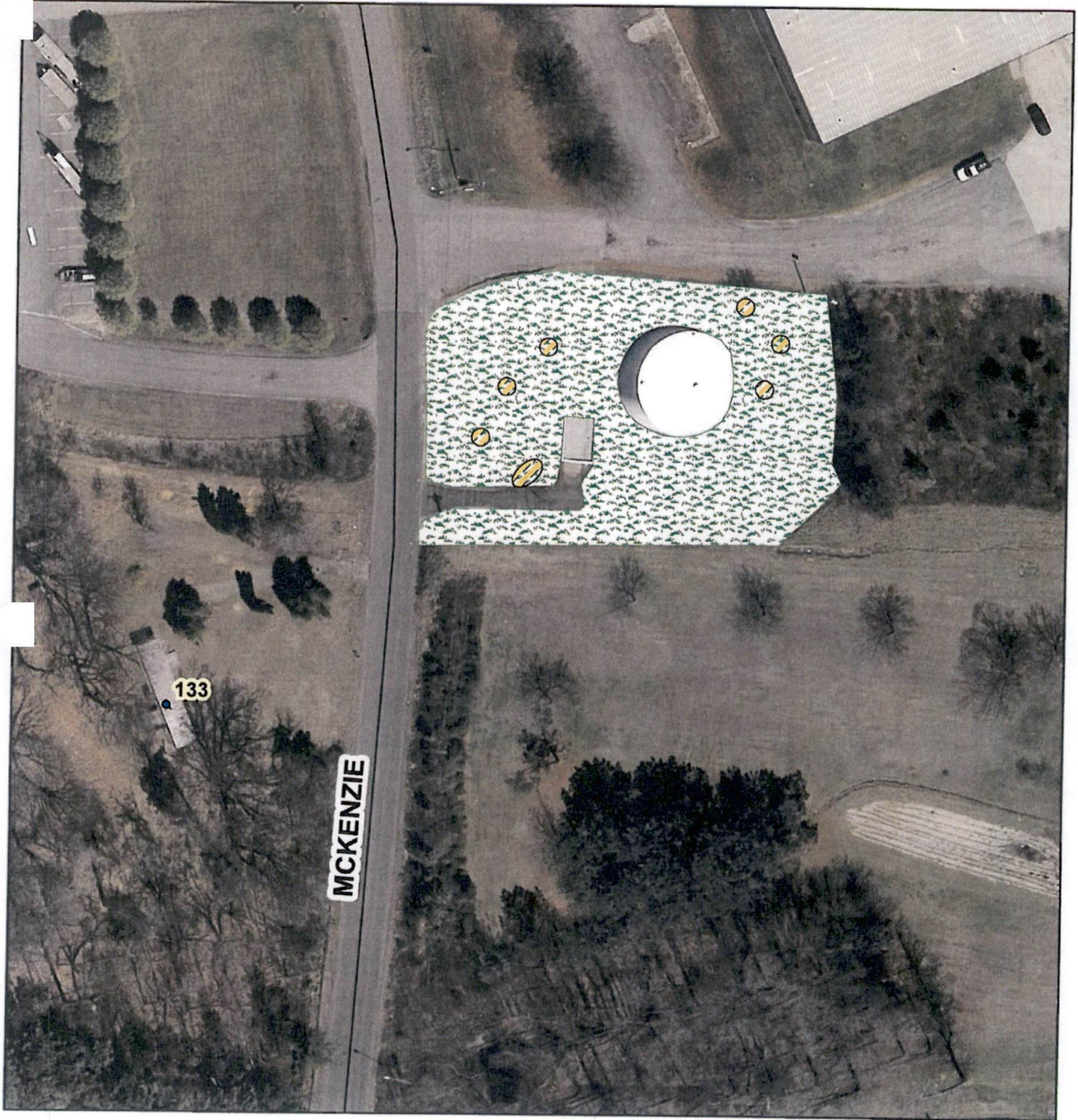
Legend

Open Space

 Grass Areas

 Mulched Areas

McKenzie Rd Pump Station



Area	Grass Area (AC)	Mulch Area (SF)
McKenzie Rd Water Tank	0.549	570

Legend

Open Space

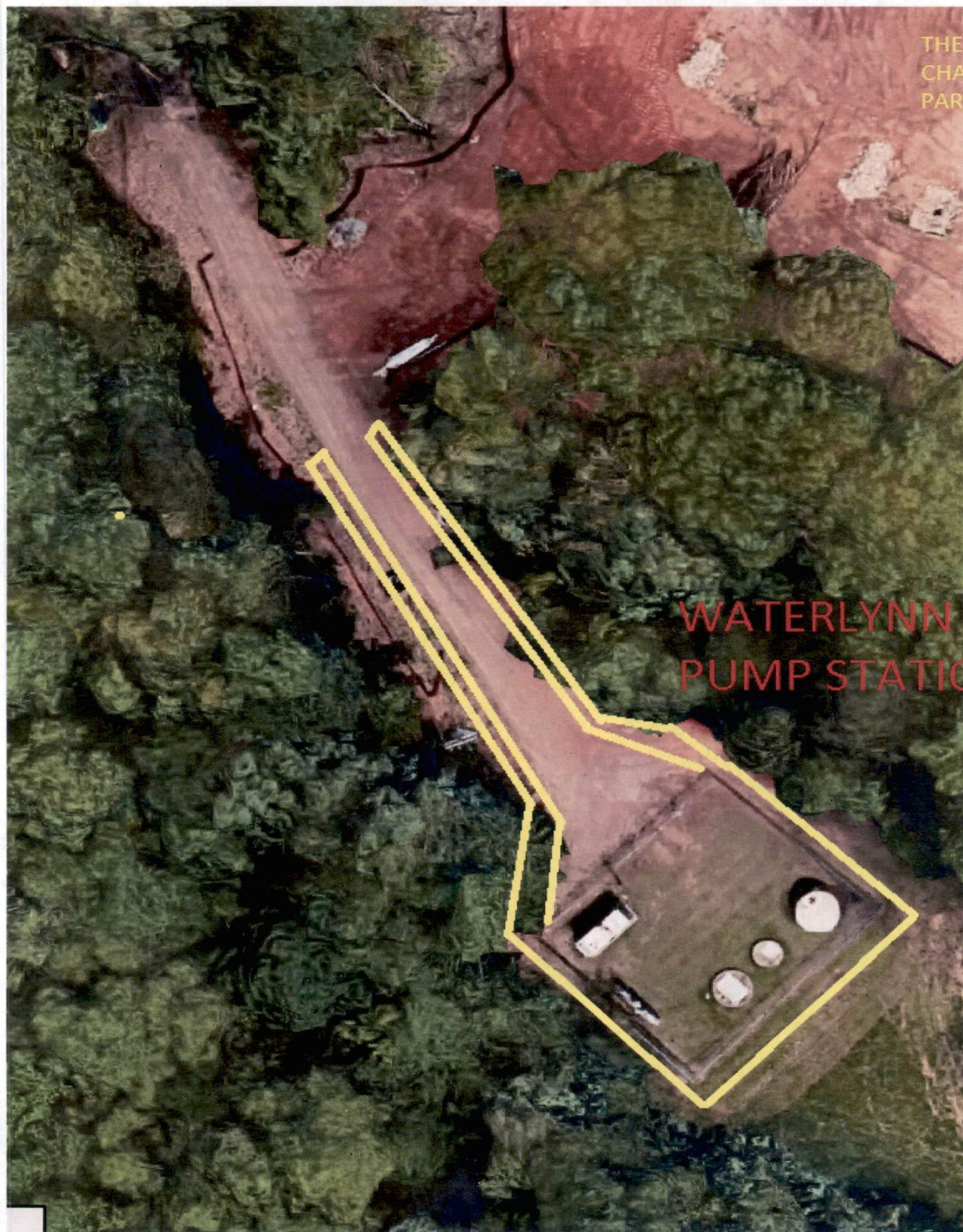
 Grass Areas

 Mulched Areas











Address:

Name: TOWN OF MOORESVILLE
Address: P O BOX 878

 **NORTHSIDE**





e-PAXTON STEVEN+MARIA MENDOZA DIAZ
Address: 103 CURRITUCK COURT

CHANDELEUR

CHANDELEUR

Name: HARBOR COVE HOME OWNERS ASSO
Address: C/O WILLIAM DOUGLAS MGMT







Name: IREDELL COUNTY
Address: PO BOX 788

Name: TOWN OF MOORESVILLE
Address: P O BOX 878

LAKESHORE ELEMENTARY



Name: CRISP JOSEPH WAYNE + DARLENE
Address: 183 RIVERWOOD RD

Name: REDELL COUNTY
Address: PO BOX 788

LAKE NORMAN HIGH SCHOOL

Name: HANGLE REAL ESTATE OF GASTONIA INC
Address: P O BOX 4158

Name: CHILDERS PAULETTE C
Address: 146 DOOLIE RD



