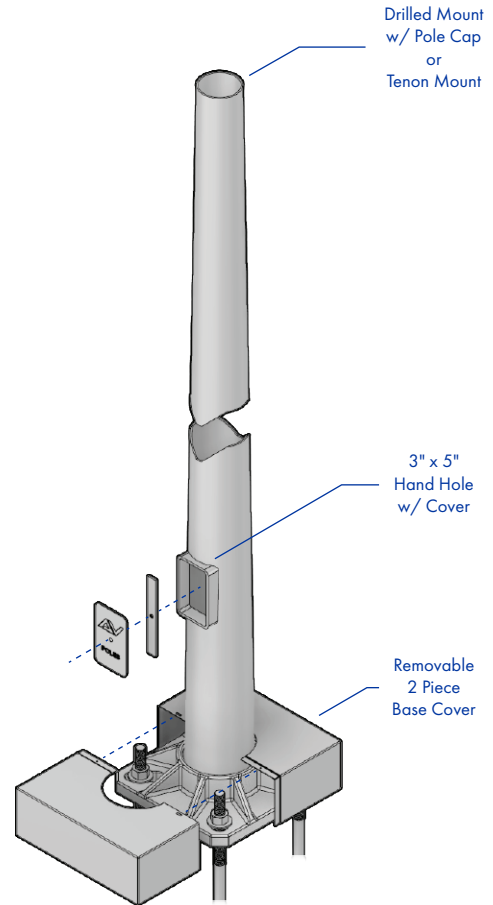
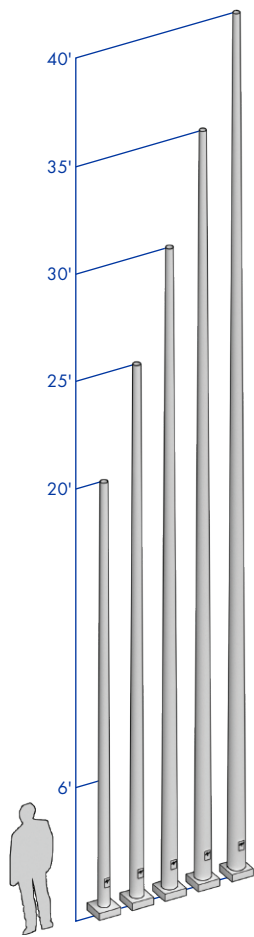


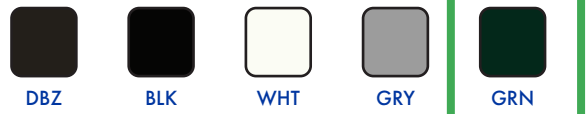
## 20-40' ROUND TAPERED ALUMINUM (0.188 Standard Wall)



**SHAFT:** One-piece extruded 6063 aluminum alloy tube heat treated to a T6 temper. Shaft has a uniform taper.

**GROUNDING:** Provision; 3/8-16 Threaded stud welded to inner shaft wall opposite hand hole. Flat washer and hex nut provided.

**HARDWARE:** S304 stainless steel



**FINISH:** TGIC thermoset polyester powder coat finish is electrostatically applied at a 3.0 mil minimum thickness. A five stage metal pretreatment process and sealer provide maximum corrosion resistance. The powder top coat is baked in excess of 400 degrees for supreme endurance.

### POLE SCHEDULE

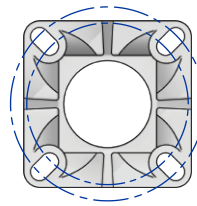
### E.P.A. DATA SCHEDULE

Calculations based on sustained wind forces plus additional 1.3 mph gust.

CATALOG NUMBER	POLE HEIGHT	SHAFT SIZE	WALL THICKNESS	BOLT CIRCLE	ANCHOR BOLTS	MAX. FIXT. WT.	70 MPH	80 MPH	90 MPH	100 MPH
RTA-2064-188	20'	Ø6"-4"	0.188"	CONTACT FACTORY	1" x 36" x 4"	200	14.4	10.3	7.7	5.8
RTA-2574-188	25'	Ø7"-4"	0.188"	CONTACT FACTORY	1" x 36" x 4"	225	13.8	9.7	7.5	5.9
RTA-3084-188	30'	Ø8"-4.5"	0.188"	CONTACT FACTORY	1" x 36" x 4"	200	13.7	10.1	7.6	5.8
RTA-3584-188	35'	Ø8"-4.5"	0.188"	CONTACT FACTORY	1" x 36" x 4"	100	9.5	7.2	5.3	4.0
RTA-4084-188	40'	Ø8"-4.5"	0.188"	CONTACT FACTORY	1" x 36" x 4"	200	10.7	7.8	5.6	4.4

## ANCHOR PLATE

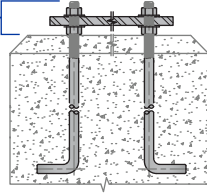
**ANCHOR PLATE:** Fabricated from cast A356 aluminum alloy and heat treated to a T6 temper. Base plate and shaft are circumferentially welded top and bottom. The anchor base is constructed with slotted anchor bolt holes.



Anchor Template  
CONTACT FACTORY

**Bolt Projection Above Grade**

Minimum.....3.25"  
Maximum.....3.75"

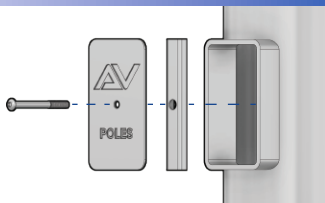
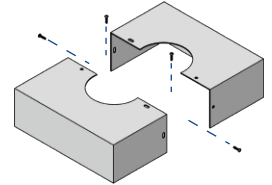
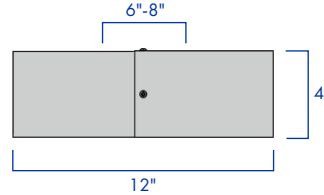


## ANCHOR BOLTS

**ANCHOR BOLTS:** Fabricated from hot-rolled carbon steel bar with minimum yield strength of 55,000 PSI. Bolts are fully galvanized and conform to ASTM-F1554 A55. Each bolt is furnished with two hex nuts and two flat washers.

## BASE COVER

**BASE BOLT COVER:** Two-piece standard full base cover is fabricated from heavy gauge quality carbon steel and pretreated with corrosion inhibitors. Provided with S304 stainless steel hardware. Spun and cast aluminum covers are available.



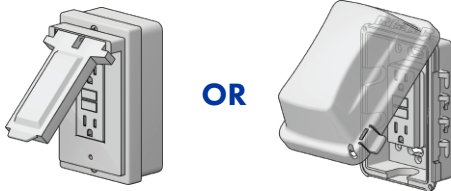
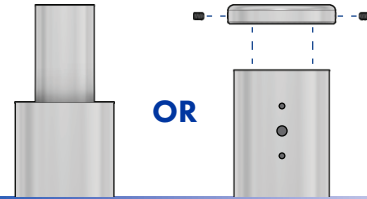
## HAND HOLE

**HAND HOLE:** Reinforced 3" x 5" hand hole is located 18" above base. Cover and attachment hardware provided.

## TENON OR DRILL MOUNT

**TENON MOUNT:** Available with 2.375" O.D. or 2.875" O.D. tenon

**DRILL MOUNT:** Removable top cap provided with drill-mount poles



## GFI RECEPTACLE

**GFI-METAL COVER:** 2 gang vertical GFI receptacle with NEC 2017 Section 406.9(B)(1) compliant metal cover.

**GFI-WEATHER PROOF IN-USE COVER:** 2 gang vertical GFI receptacle with In Use Non Metallic cULus listed cover.

## ORDERING INFORMATION

AVPL-RTA -

HEIGHT	SHAFT	SHAFT WALL	MOUNTING	GFI	ACCESSORIES	FINISH
20'	6"-4" Uniform Taper 2064-188 Only	0.188" Standard Wall	PT23 Ø2.375" TENON	GFI with METAL COVER	BEB BANNER EYE BOLT	DBZ DARK BRONZE
25'	7"-4" Uniform Taper 2574-188 Only		PT27 Ø2.875" TENON	GFI with WEATHER PROOF IN-USE COVER	CPLN THREADED COUPLING	BLK BLACK
30'	8"-4.5" Uniform Taper		1@90 POLE DRILLING		BA BANNER ARMS	WHT WHITE
35'			2@90 POLE DRILLING		BH BASKET HOLDERS	GRY GREY
40'			2@180 POLE DRILLING		FH FLAG HOLDERS	GRN GREEN
			3@90 POLE DRILLING			GALV GALVANIZED
			3@120 POLE DRILLING			
			4@90 POLE DRILLING			

CONTACT  
FACTORY FOR  
HEIGHT OPTIONS

CONTACT  
FACTORY FOR  
DRILLING OPTIONS

CONTACT  
FACTORY FOR  
DETAILS

ALL RAL COLORS  
AVAILABLE