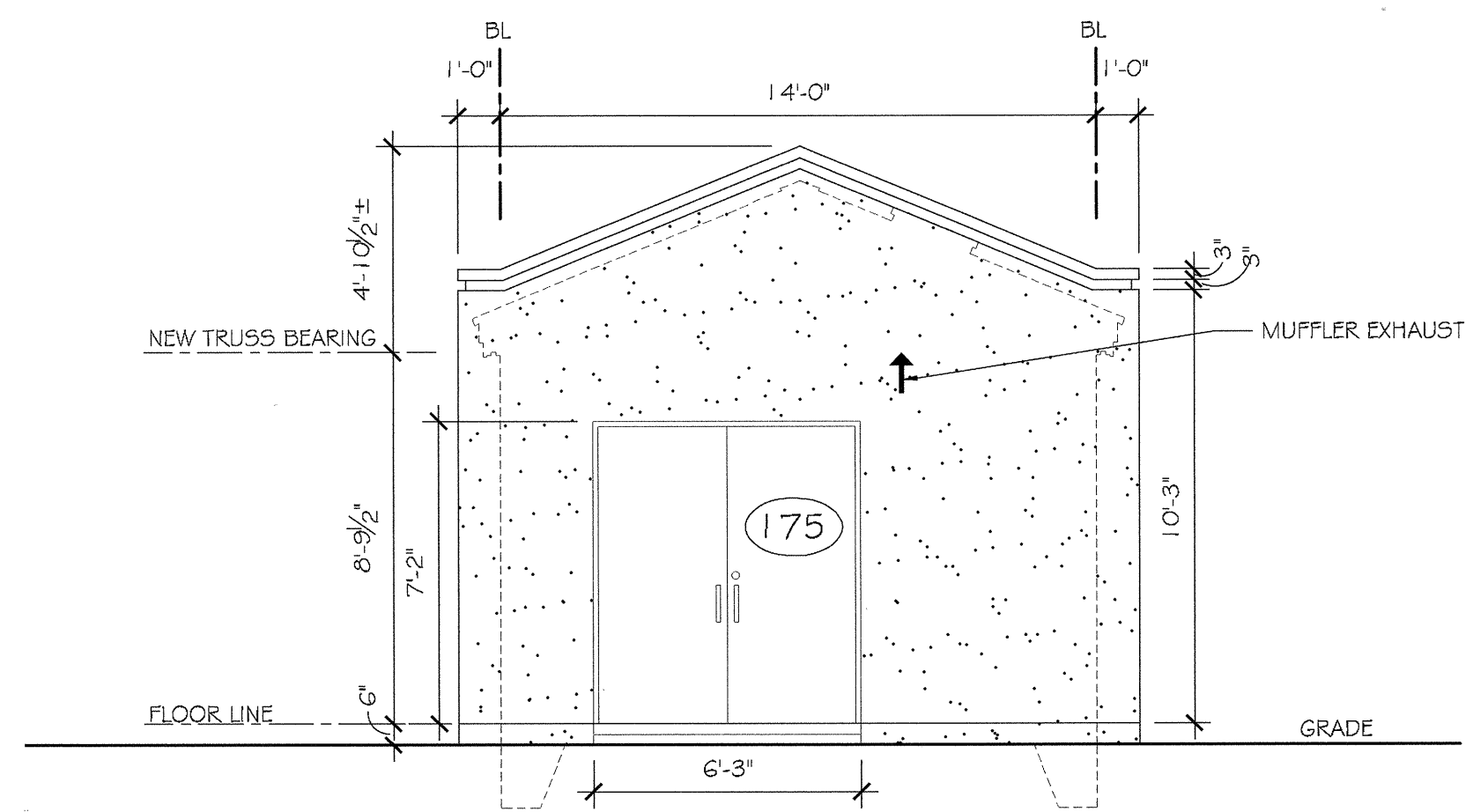
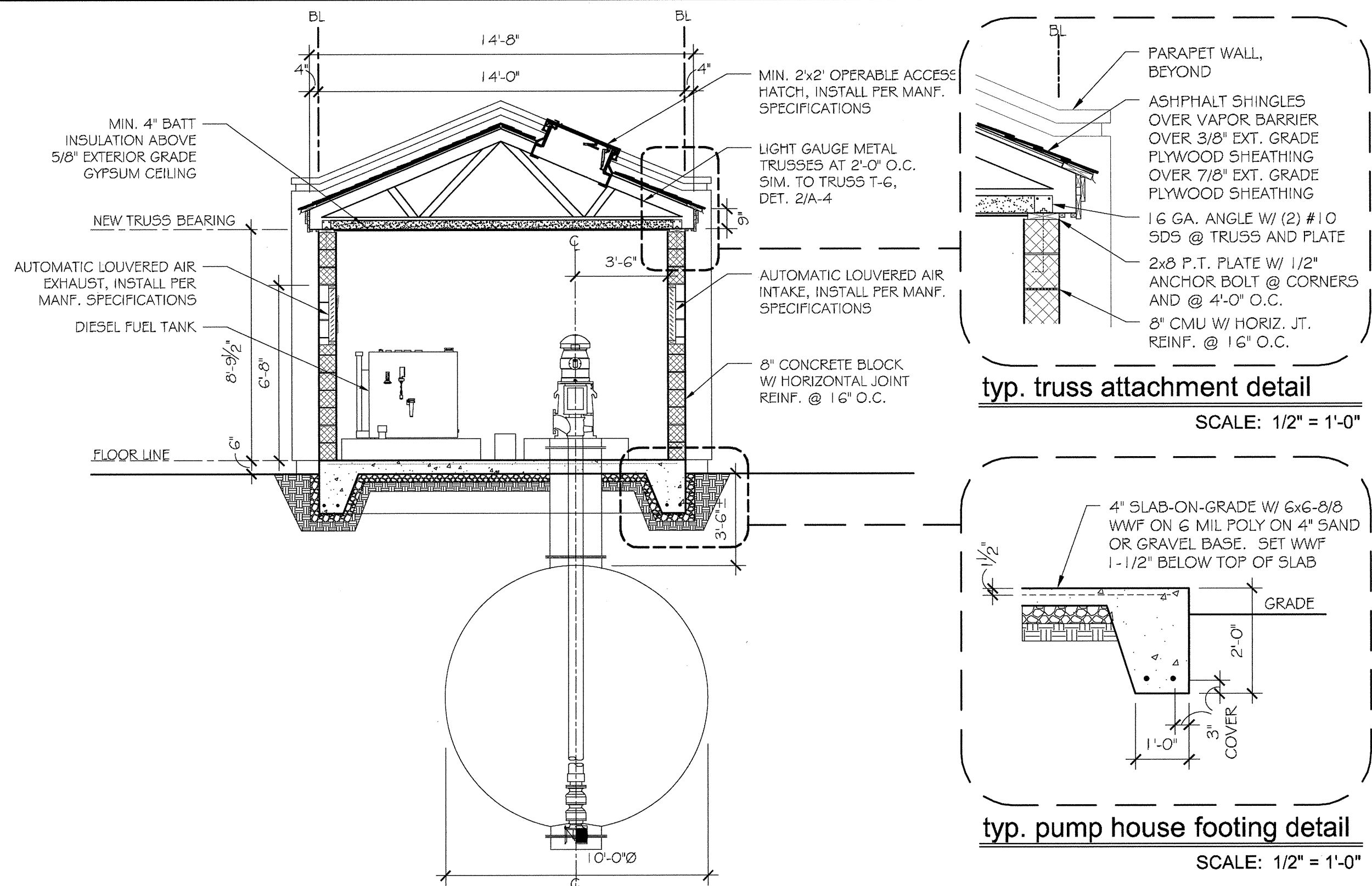


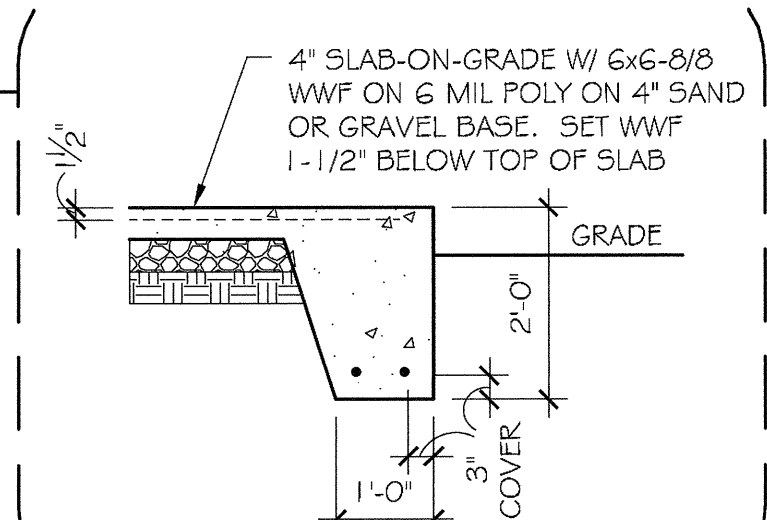
2 north elevation  
SCALE: 1/4" = 1'-0"



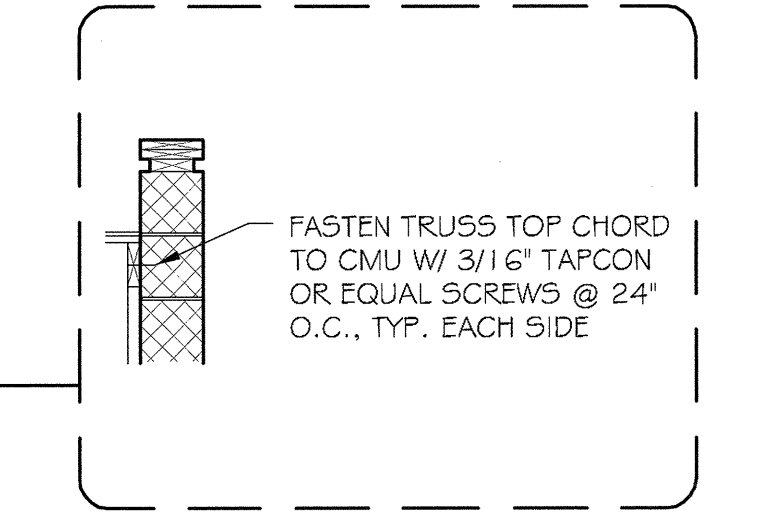
3 south elevation  
SCALE: 1/4" = 1'-0"



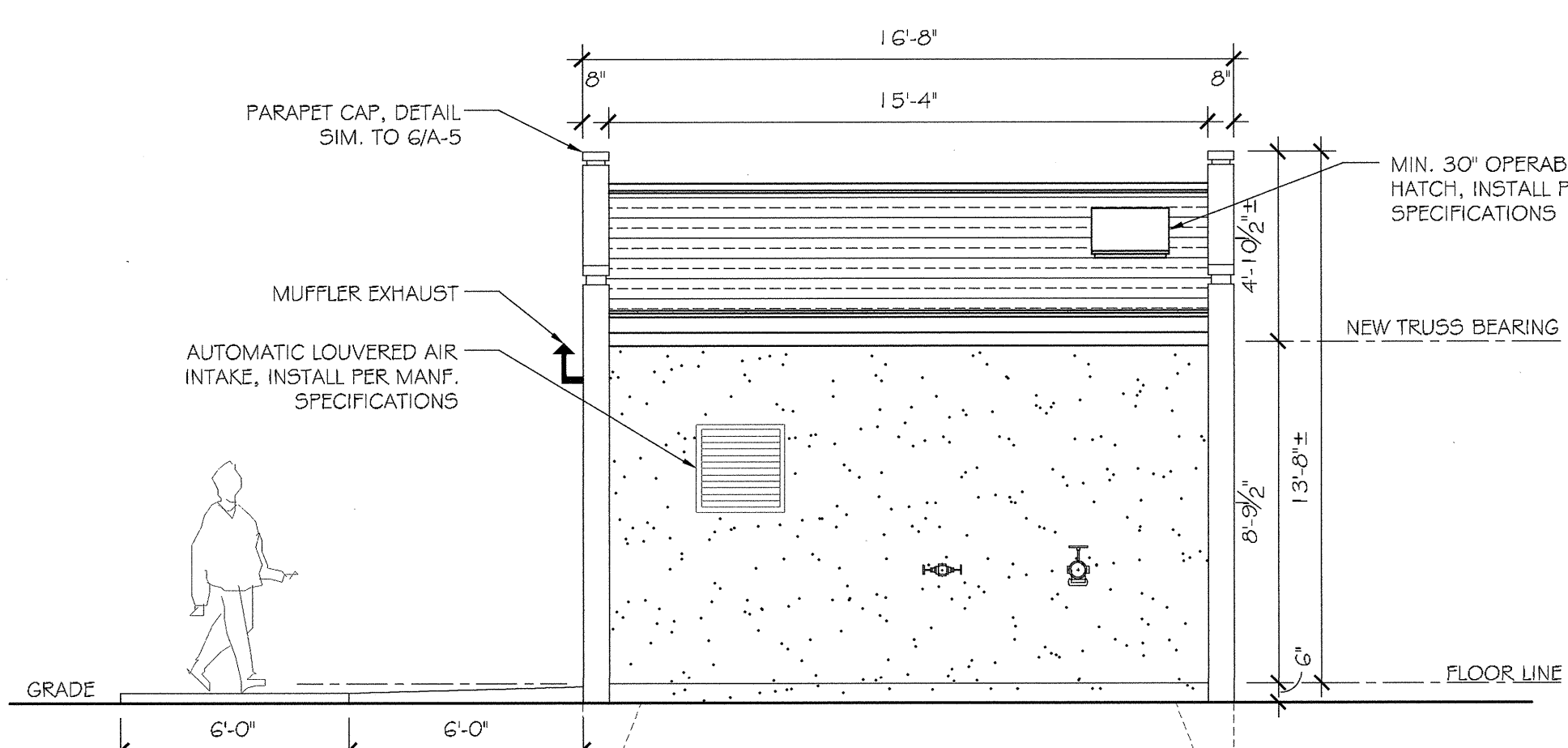
typ. truss attachment detail  
SCALE: 1/2" = 1'-0"



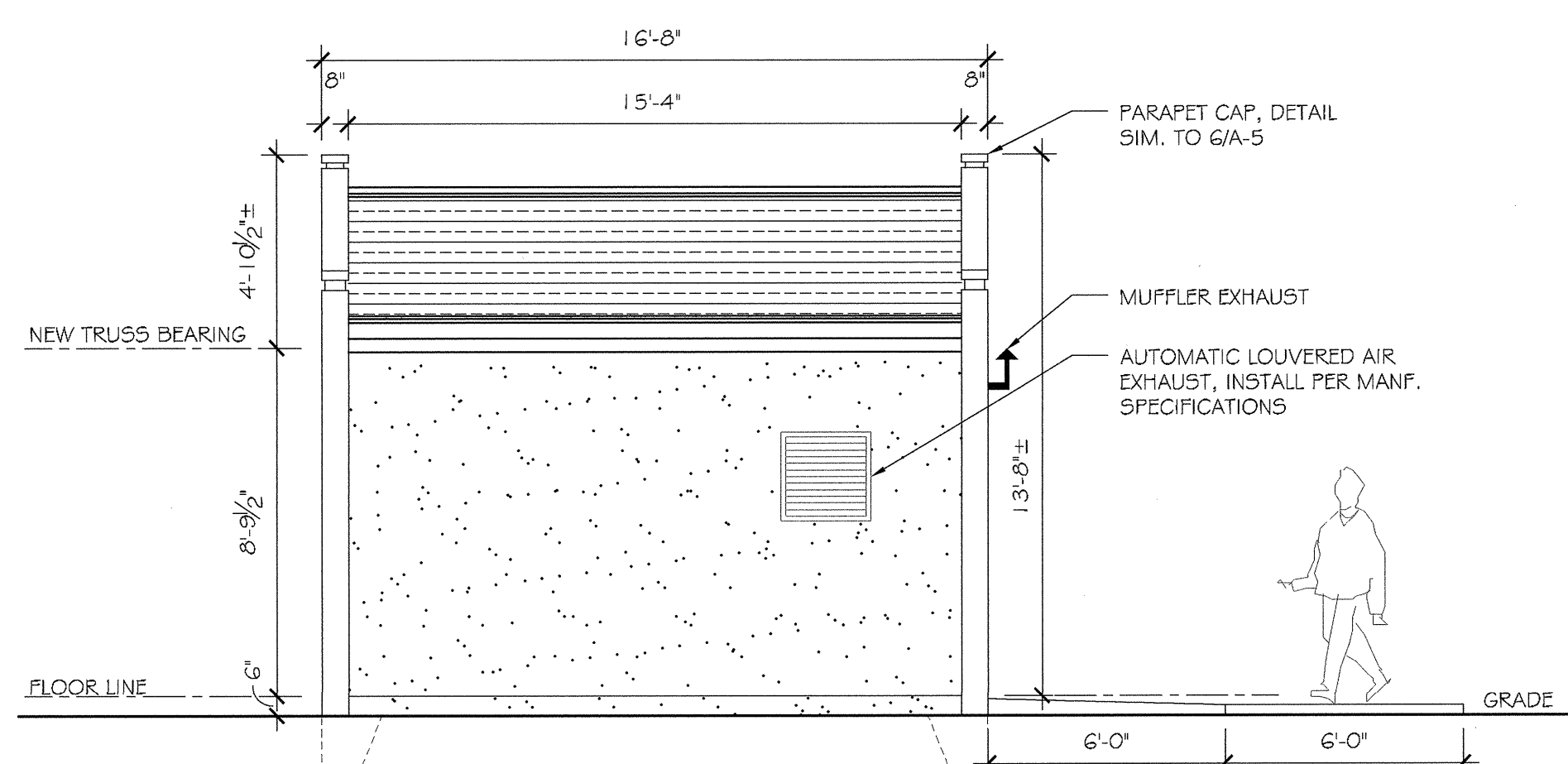
typ. pump house footing detail  
SCALE: 1/2" = 1'-0"



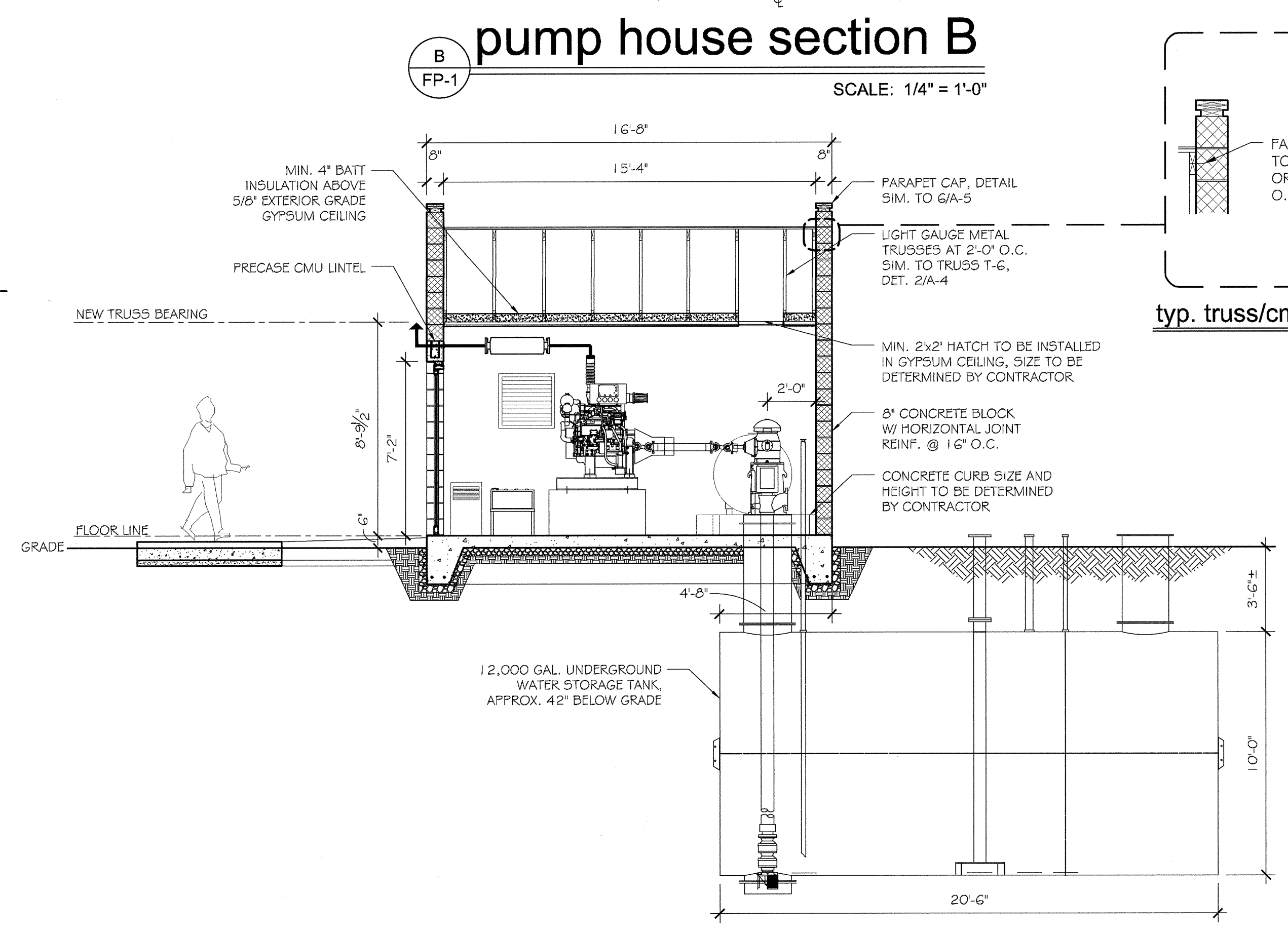
typ. truss/cmu support detail  
SCALE: 1/2" = 1'-0"



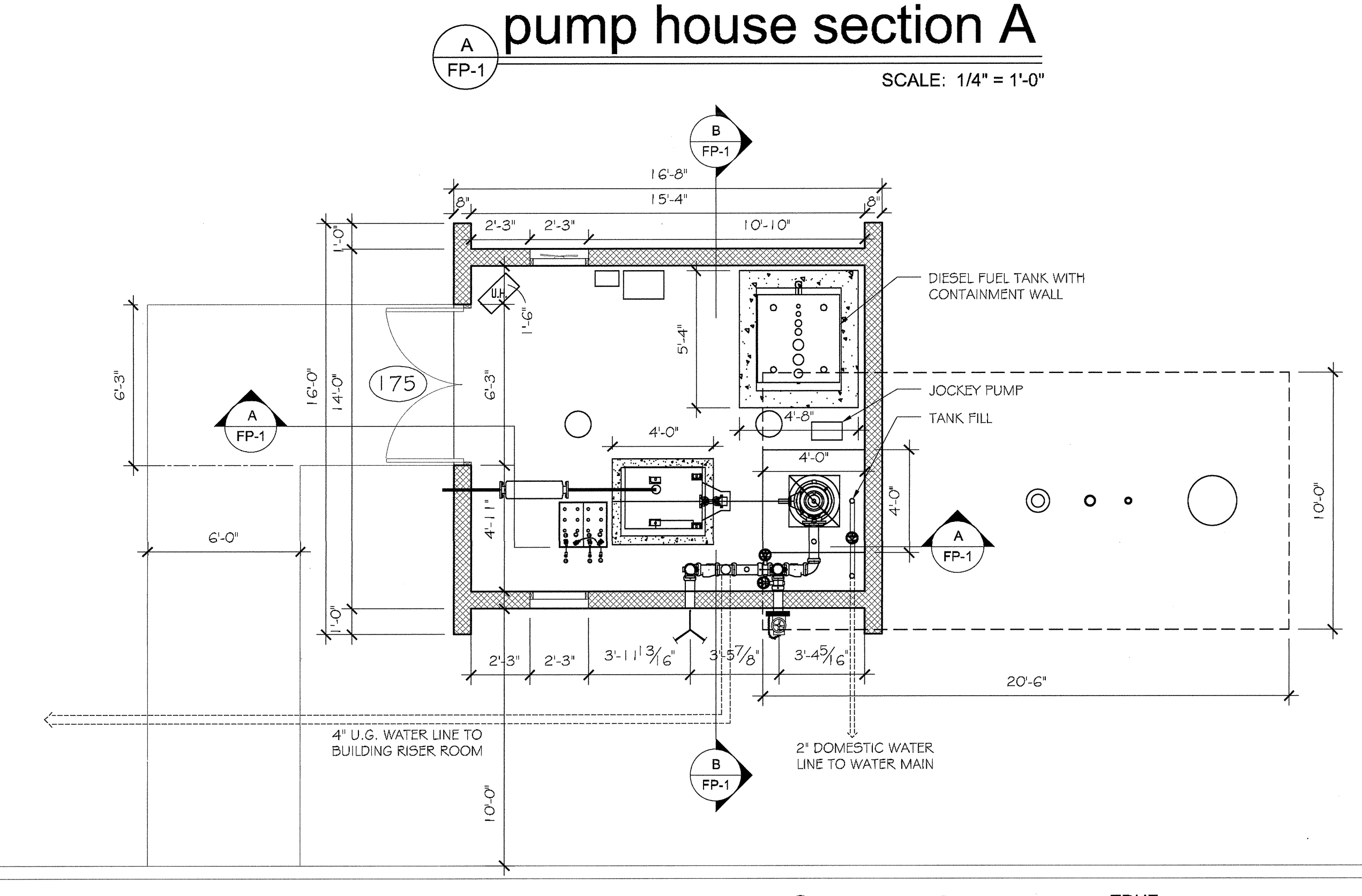
4 east elevation  
SCALE: 1/4" = 1'-0"



5 west elevation  
SCALE: 1/4" = 1'-0"

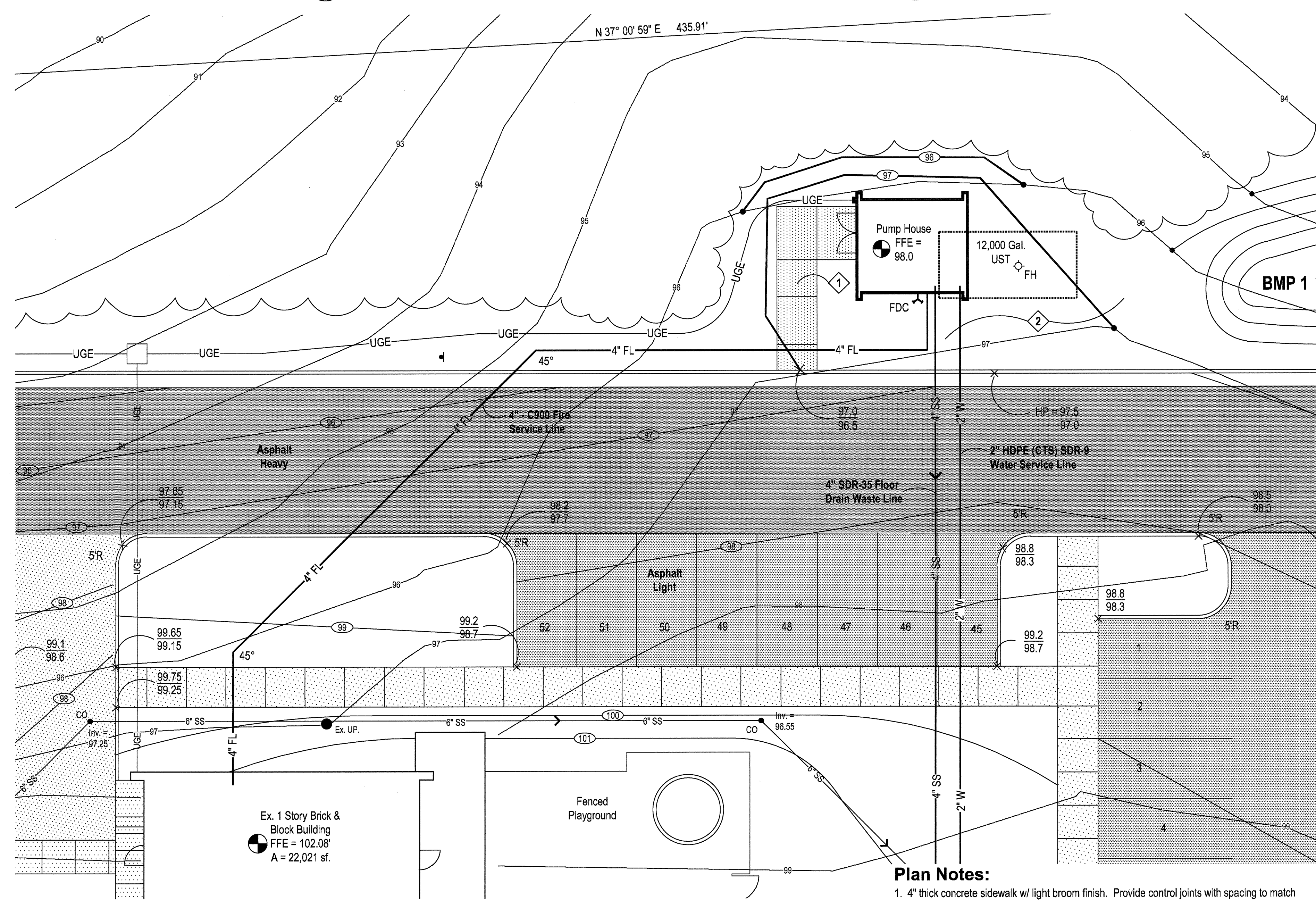


pump house section B  
SCALE: 1/4" = 1'-0"



pump house section A  
SCALE: 1/4" = 1'-0"

1 pump house floor plan  
SCALE: 1/4" = 1'-0"



6 vicinity site plan  
SCALE: 1" = 10'

- Plan Notes:**
- 4" thick concrete sidewalk w/ light broom finish. Provide control joints with spacing to match width of sidewalk. Provide turned down / thickened edge with 4" to 6" step at pavement as shown on Grading Plan. See sidewalk and pad notes and typical detail Sheet C-2 of the Civil Drawings for the building.
  - Remove trees and woodland vegetation as required to facilitate new improvements. Burn debris on site as permitted by local ordinance and / or haul off-site at Contractor's expense. Contractor may haul to County landfill with no fees.
  - See this sheet and sheet FP-2 for dimensions and details of Pump House, water storage tank and appurtenances.
  - See Civil Drawings, C-1, C-2, C-3, C-4, C-5 & C-6 for site work relations to total project.

**BAXTER BAILEY & ASSOCIATES**  
ARCHITECTS

CONSULTING ENGINEER  
Post Office Box 66  
Emporia, Virginia 23847  
434-634-8665 ph  
434-634-0254 fx  
robinsont@bbaa.com  
JEFF ROBINSON  
ASSOCIATES, LLC

OWNER:  
Dinwiddie County Board of Supervisors

Daniel D. Lee - Chairman  
Brandia K. Ebron-Bonner - Vice Chairman  
Harrison A. Moody  
Dr. Mark E. Moore  
William D. Owens

MCKENNEY RECREATION CENTER  
RAGSDALE COMMUNITY CENTER

DINWIDDIE COUNTY, VIRGINIA  
COUNTY ADMINISTRATOR  
W. Kevin Massie, III - County Administrator  
Tamara Collins - Deputy County Administrator  
J. Rayfield Vines, III - Assistant Recreation Director

DATE: JUNE 1, 2015  
JOB NUMBER:  
J-239-10

DESIGN BY: JBB  
DRAWN BY: MPN  
CHECKED BY: JBB

REVISIONS

Professional Engineer Seal for Jeff Robinson, No. 591

FP-1