



# **Request for Proposals**

**Install New Fluid Applied**

**Membrane Roof on Jones**

**County Government Center**

**Issue Date: Thursday, June 21, 2022**

**JONES COUNTY BOARD OF COMMISSIONERS  
166 INDUSTRIAL BLVD. /P.O. BOX 1359  
GRAY, GA 31032  
PHONE: (478) 986-8233  
ATTN: JASON RIZNER, COUNTY ADMINISTRATOR**

**PROPOSALS WILL BE RECEIVED UNTIL Thursday, August 11, 2022 at 3:30 P.M.**

**PROPOSALS ARE TO BE SEALED AND MAILED VIA USPS, FEDEX OR UPS TO THE ABOVE ADDRESS OR HAND DELIVERED TO THE COUNTY ADMINISTRATOR'S OFFICE LOCATED IN THE JONES COUNTY GOVERNMENT CENTER AT 166 INDUSTRIAL BLVD., GRAY, GA. ENVELOPES SHOULD BE MARKED WITH "RFP - Install New Fluid Applied Membrane Roof on Jones County Government Center"**



### **SCOPE OF WORK INTENT**

It is the intent of this solicitation to secure a qualified contractor to install a new fluid applied membrane roof at the Jones County Government Center located at 166 Industrial Blvd. Gray, Georgia 31032. The scope of services for this contract will be for all labor and materials needed to complete the work specified herein. Contractor shall be a properly licensed contractor under existing Federal, State and Local laws, and qualified to perform the job as contained in the specifications. Contractor shall have a minimum of two years documented experience with projects of similar scope and complexity. **Please submit bid based on specifications listed below.**

### **Mandatory pre-bid meeting**

**A Mandatory Pre –Proposal meeting will be held for all interested vendors. Pre-Proposal meeting is scheduled for July 14, 2022 at 10:00 AM at 166 Industrial Blvd. Gray, Georgia 31032. The Site visit and walk thru will be held after the mandatory Pre- Proposal Meeting. Interested vendors must attend the pre-proposal meeting and walk thru in order to submit a bid for the project.**

### **Questions**

Any questions regarding this RFP should be directed to Michael E Clark, President of Michael E Clark and Associates, Inc. in writing at [mecanda@mgacoxmail.com](mailto:mecanda@mgacoxmail.com)

Cutoff time for any questions will be Friday, July 22, 2022 at 5:00pm. All questions submitted in writing will be addressed in an addenda by Friday, July 29, 2022.



### **General Information**

- The County reserves the right to reject and or all bids or proposals, to waive technicalities, and to make a selection and final award as deemed to be in the best interest of the County.
- Provider selection will be based on the information contained in the bids, and incomplete or inaccurate information may result in disqualification of a proposal or a bidder.
- The Jones County Board of Commissioners reserves the right to amend or revise bid documents. It is the vendor's responsibility to monitor the county's vendor Registry site for any addenda that may be issued
- The proposal submitted by each proposed service provider will be treated as best and final. There will be no opportunity to negotiate fees during the selection process.
- If you plan to use subcontractors to perform any of the work described above, please identify the subcontractors you plan to use and explain the role they would play in this project.
- The County does not guarantee the purchase of any/all equipment.
- The County reserves the right to terminate any contract for this equipment and/or services for any of the following reasons:
  - a. If the equipment/service is not delivered/completed on an agreed-upon schedule.
  - b. If the equipment/services delivered is not the same equipment/services bid.
  - c. Receipt of substandard product/service.
  - d. Poor workmanship.



## Specifications

### SECTION 07 56 13 – LIQUID-APPLIED ROOFING

#### PART 1 GENERAL

##### 1.1 SECTION INCLUDES

- A. Liquid-applied roofing over non-metal substrates.
  - 1. Roof coatings.
  - 2. Flashings, fabric, and bulking agents.
- B. Liquid-applied roofing over metal substrates.
  - 1. Roof coatings.
  - 2. Flashings, fabric, and bulking agents.
  - 3. Primers and sealants.

##### 1.2 RELATED SECTIONS

- A. Section 06 10 00 - Rough Carpentry.
- B. Section 07 62 00 - Sheet Metal Flashing and Trim.
- C. Section 22 30 00 - Plumbing Equipment.

##### 1.3 REFERENCES

- A. ASTM International (ASTM):
  - 1. ASTM D1079 - Standard Terminology Relating to Roofing, Waterproofing, and Bituminous Materials.
  - 2. ASTM D1653 - Standard Test Methods for Water Vapor Transmission of Organic Coating Films.
  - 3. ASTM D4263 - Standard Test Method for Indicating Moisture in Concrete by the Plastic Sheet Method.
  - 4. ASTM D4798 - Standard Practice for Accelerated Weathering Test Conditions and Procedures for Bituminous Materials (Xenon-Arc Method).
  - 5. ASTM D6083 - Standard Specification for Liquid Applied Acrylic Coating Used in Roofing
  - 6. ASTM E96 - Standard Test Methods for Water Vapor Transmission of Materials.
  - 7. ASTM E108 - Standard Test Methods for Fire Tests of Roof Coverings.
  - 8. ASTM G26 - Practice for Operating Light-Exposure Apparatus (Xenon-Arc Type) With and Without Water for Exposure of Nonmetallic Materials.
  - 9. ASTM G53 - Practice for Operating Light- and Water-Exposure Apparatus (Fluorescent UV-Condensation Type) for Exposure of Nonmetallic Materials.
- B. American Society of Civil Engineers (ASCE):
  - 1. ASCE 7 - Minimum Design Loads for Buildings and Other Structures.
- C. Factory Mutual (FM Global):
  - 1. FM Approval Guide.
  - 2. FM Standard 4470 - Approval Standard for Class 1 Roof Covers.
- D. National Roofing Contractors Association (NRCA):
  - 1. NRCA Roofing and Waterproofing Manual.
- E. Sheet Metal and Air Conditioning Contractors National Association (SMACNA):
  - 1. SMACNA Architectural Sheet Metal Manual.



- F. Underwriters Laboratories (UL):
  - 1. UL Roofing Materials and Systems Directory.

#### 1.4 DEFINITIONS

- A. Roofing Terminology: Refer to ASTM D1079 and the glossary of the NRCA Roofing and Waterproofing Manual for definitions of roofing terms related to this section.

#### 1.5 SUBMITTALS

- A. Submit under provisions of Section 01 30 00 - Administrative Requirements.
- B. Product Data:
  - 1. Manufacturer's data sheets on each product to be used.
  - 2. Preparation instructions and recommendations.
  - 3. Storage and handling requirements and recommendations.
  - 4. Typical installation methods.
- C. Verification Samples: Two representative units of each type, size, pattern and color.
- D. Shop Drawings: Include details of materials, construction and finish. Include relationship with adjacent construction.

#### 1.6 QUALITY ASSURANCE

- A. Manufacturer Qualifications: Company specializing in manufacturing products specified in this section with a minimum five years documented experience.
- B. Installer Qualifications: Company specializing in performing Work of this section with minimum two years documented experience with projects of similar scope and complexity.
  - 1. Installer shall be classified as a Master Select Contractor as defined and certified by manufacturer.
- C. Source Limitations: Provide each type of product from a single manufacturing source to ensure uniformity.
- D. Mock-Up: Construct a mock-up with actual materials in sufficient time for Architect's review and to not delay construction progress. Locate mock-up as acceptable to Architect and provide temporary foundations and support.
  - 1. Intent of mock-up is to demonstrate quality of workmanship and visual appearance.
  - 2. If mock-up is not acceptable, rebuild mock-up until satisfactory results are achieved.
  - 3. Retain mock-up during construction as a standard for comparison with completed work.
  - 4. Do not alter or remove mock-up until work is completed or removal is authorized.

#### 1.7 PRE-INSTALLATION CONFERENCE

- A. Convene a conference approximately two weeks before scheduled commencement of the Work. Attendees shall include Architect, Contractor, manufacturer, and trades involved. The primary purpose of the meeting is to review foreseeable methods and procedures related to roofing work.
  - 1. The installer shall record conference discussions to include decisions, agreements, and open issues and furnish copies of recorded discussions to each attending party.
  - 2. Tour representative areas of roofing substrates to inspect and discuss conditions of substrate, penetrations and other preparatory work to be performed.
  - 3. Review coating system requirements.
  - 4. Review required submittals, both completed and in progress.
  - 5. Review and finalize the construction schedule related to roofing work, and verify availability of materials, installer's personnel, equipment and facilities needed to consistently make



- progress and avoid delays.
6. Review required inspections, testing, and certifying, and material usage accounting procedures. Review forecasted weather conditions.
  7. Establish procedures for coping with unfavorable conditions, including the possibility of temporary roofing work.

#### 1.8 DELIVERY, STORAGE, AND HANDLING

- A. Store and handle coating materials in a manner that will ensure there is no possibility of contamination.
- B. Store in a dry, well ventilated, weather tight location at temperatures between 50 and 90 degrees F (10 and 32 degrees C) until the products are ready to be applied, keep from freezing. Do not stack material pallets more than two high.
- C. Do not subject existing roof to unnecessary loading of stockpiled materials.
- D. Store and dispose of solvent-based materials, and materials used with solvent-based materials, in accordance with requirements of local authorities having jurisdiction.

#### 1.9 PROJECT CONDITIONS

- A. Weather:
  1. Proceed with roofing only when existing and forecasted weather conditions permit.
  2. Ambient temperatures shall be above 50 degrees F (10 degrees C) and rising when applying water based coatings.
- B. Proceed with roofing work only when existing and forecasted weather conditions will permit work to be performed in accordance with coating recommendations and guarantee requirements as follows:
  1. Do not begin work if precipitation is expected within twenty-four hours of application, or if temperatures are expected to fall below 42 degrees F (6 degrees C) during the duration of the job.
  2. Upper temperature restriction (both air and substrate) for application of coating products is 110 degrees F (43 degrees C). If substrate temperatures exceed 110 degrees F (43 degrees C), coating products shall be applied during cooler periods of the day. If this is not practical, the substrate shall be cooled with water, and then coating products applied just after the water has flashed-off.
  3. No moisture may be present when applying coating products. Taking into consideration the UV curing properties of coating allow for sufficient daylight hours necessary for curing of materials.

#### 1.10 WARRANTY

- A. Liquid Applied Diamond Pledge NDL Roof Guarantee: Manufacturer's standard form, without money limitation, in which manufacturer agrees to repair leaks through the coatings products on the roof caused by manufacturing defects, natural deterioration of, or workmanship in applying, the coatings roofing system.
  1. Warranty Coverage: Labor and materials.
  2. Warranty Duration: Twenty years.

### PART 2 PRODUCTS

#### 2.1 MANUFACTURERS

- A. Acceptable Manufacturer: GAF Commercial Roofing Products, which is located at: 1 Campus Dr.; Parsippany, NJ 07054; Toll Free Tel: 800-ROOF-411; Tel: 973-628-3000; Fax: 973-628-3451;



Email:[request info \(TechnicalQuestionsGAF@gaf.com\)](mailto:TechnicalQuestionsGAF@gaf.com); Web:<https://www.gaf.com>

- B. Requests for substitutions will be considered in accordance with provisions of Section 01 60 00 - Product Requirements.

## 2.2 PERFORMANCE REQUIREMENTS

- A. Standards Compliance:
  1. Listed in UL - Roofing Materials and Systems Directory for Class A construction.
  2. Flame spread shall pass ASTM E108 or UL 790.
  3. Roof covering materials shall bear UL approval marking on the container.
  4. Conforming to federal, state and local codes.
  5. Installed roofing membrane and base flashing system shall not permit the passage of water, and shall withstand the design pressures calculated in accordance with the current revision of ASCE 7.
- B. All primary roofing materials shall be physically and chemically compatible when installed in accordance with manufacturer's current application requirements.

## 2.3 ROOF COATINGS

- A. Finish Coat, Basis of Design: HydroStop PremiumCoat Finish Coat; as manufactured by GAF, Commercial Roofing Products Division.
  1. Description: An acrylic, permanently flexible, highly UV-resistant, chemical-resistant elastomeric compound fully reinforced with a tough stitch-bonded polyester fabric designed for roofing and flashing applications of all types.
  2. Application Rate: 0.75 to 1.00 gallon per 100 sq.ft. (3.05 to 4.07 liters per 10 sq.m.) per coat.
  3. Application Method: Spray, roof brush or 1 inch (25.4 mm) nap roller.
  4. Application Temperature, Air and Surface: 50 to 110 degrees F (10 to 43 degrees C).
  5. Dry Time, Touch: 1 to 4 hours at 77 degrees F (25 degrees C), with 40 percent RH.
  6. Full Cure: 7 days.
- B. Foundation Coat, Basis of Design: HydroStop PremiumCoat Foundation Coat; as manufactured by GAF, Commercial Roofing Products Division.
  1. Description: An acrylic, permanently flexible, highly UV-resistant, chemical-resistant elastomeric compound fully reinforced with a tough stitch-bonded polyester fabric designed for roofing and flashing applications of all types.
  2. Application Rate: 1.00 to 1.50 gallon per 100 sq.ft. (4.07 to 6.11 liters per 10 sq.m.) per coat.
  3. Application Method: Roof brush.
  4. Application Temperature, Air and Surface: 50 to 110 degrees F (10 to 43 degrees C).
  5. Dry Time, Touch: 1 to 4 hours at 77 degrees F (25 degrees C), with 40 percent RH.
  6. Full Cure: 7 days.

## 2.4 FLASHINGS, FABRIC AND BULKING AGENTS

- A. Flashing, Basis of Design: HydroStop PremiumCoat Butter Grade Flashing; as manufactured by GAF, Commercial Roofing Products Division.
  1. Description: A high volume solids for low shrinkage providing increased tensile strength and elongation on problem roof areas. It is ideally suited for sealing mechanical fasteners and horizontal seams on metal roofs, as well as around flashings, drains and protrusions.
  2. Application Rate: 2.0 gallon per 200 linear feet with a 6 inch width (7.6 liters per 61 linear meters with a 152 mm width), typically requires 2 coats.
  3. Application Method: Putty knife, spatula, and stiff bristle brush.
  4. Application Temperature, Ambient: Minimum 50 degrees F (10 degrees C).
  5. Dry Time: 1 to 4 hours.
  6. Clean Up: Water before curing.



- B. Bulking Agent, Basis of Design: HydroStop Hydrofiber Bulking Agent; as manufactured by GAF, Commercial Roofing Products Division.
1. Description: Comprised of glass fibers that, when mixed with one of the above listed products, will create a thick, workable compound used to fill voids, level surfaces, and create cants. Also used for flashing details, metal roof seams, inside and outside flashing details, round stacks, pipe legs, pitch pockets, conduit pipes, expansion joints, and similar applications.
  2. Application Rate: 0.50 gal per 1 gal (1.9 L per 3.8 L) of finish or foundation coat. Not to exceed 1:1
  3. Application Method: Brush.
  4. Application Temperature, Air and Surface: 50 to 110 degrees F (10 to 43 degrees C).
  5. Dry Time: Minimum 24 hours.
  6. Clean Up: Water.
- C. Fabric, Basis of Design: HydroStop PremiumCoat Fabric; as manufactured by GAF, Commercial Roofing Products Division.
1. Description: Tough, non-woven, stitch-bonded, heat-set polyester designed for roofing and flashing applications of all types.
  2. Roll Size: 300 feet (91,400 mm) long by 6 inches (152 mm) wide.

## 2.5 PRIMERS AND SEALANTS FOR LIQUID-APPLIED ROOFING OVER METAL SUBSTRATES

- A. Sealant, Basis of Design: FlexSeal Sealant; as manufactured by GAF, Commercial Roofing Products Division.
1. Description: White, solvent-based synthetic elastomeric compound designed to line and waterproof interior and exterior gutters typically found in metal buildings. FlexSeal Sealant is capable of withstanding ponding water. This product is easiest to apply at temperatures over 42 degrees F (4.4 degrees C).
  2. Application Rate: 2.0 gallon per 200 linear feet with a 6 inch width (7.6 liters per 61 linear meters with a 152 mm width), typically requires 2 coats.
  3. Application Method: Roller or airless sprayer.
  4. Application Temperature, Air and Surface: 20 to 120 degrees F (minus 6.6 to 49 degrees C).
  5. Dry Time: Approximately 24 hours at 75 degrees F (24 degrees C), with 50 percent RH.

## PART 3 EXECUTION

### 3.1 EXAMINATION

- A. Do not begin installation until substrates have been properly constructed and prepared.
- B. If substrate preparation is the responsibility of another installer, notify Architect in writing of unsatisfactory preparation before proceeding.

### 3.2 PREPARATION FOR LIQUID-APPLIED ROOFING OVER NON METAL SUBSTRATES

- A. Clean surfaces thoroughly prior to installation. Clean in accordance with coating manufacturer's recommendations for substrate.
- B. Conduct adhesion test as required by manufacturer.
- C. Prepare surfaces using the methods recommended by the manufacturer for achieving the best result for the substrate under the project conditions.
- D. Moisture Survey: Perform a moisture survey on the roof system to determine the suitability of the existing roof for application of the coating system. Any wet or deteriorated areas shall be removed and replaced.





- E. Treatment of Damaged or Deteriorated Membrane: Repair any areas where membrane is torn, cracked and/or buckled using similar or compatible products manufactured by GAF. Replace any wet insulation as part of the roofing repair. Allow 24 hours drying time before application of other coating products.
- F. Treatment of Ponding Water Areas: Make every effort to mechanically eliminate all ponding water areas on the roof prior to application of coating products. Ponding water is defined as water that does not properly drain and remains on the roof for more than 48 hours after precipitations stops.
- G. Deteriorated Seams: Repair all delaminated or open seams using method acceptable to the manufacturer.
- H. Pitch Pans: Cap with sheet metal so they may be sealed with coating products.
- I. Condensate Lines: Condensate lines shall be installed from HVAC units to gutters as part of the overall drainage system. The type of piping used for condensate lines may vary depending on local building codes.

### 3.3 PREPARATION FOR LIQUID-APPLIED ROOFING OVER METAL SUBSTRATES

- A. Clean surfaces thoroughly prior to installation. Clean in accordance with coating manufacturer's recommendations for substrate.
- B. Conduct adhesion test as required by manufacturer.
- C. Prepare surfaces using the methods recommended by the manufacturer for achieving the best result for the substrate under the project conditions.
- D. Sheet Metal Crickets: Install sheet metal crickets according to manufacturer's specifications on the high side of all curb units.
  - 1. Cut vertical ribs a minimum of 2 inches (51 mm) from the cricket to allow both the cricket flanges to mount flush to the metal panel and facilitate water drainage.
  - 2. Treat cut ribs in same fashion as a void larger than 1/4 inch (6 mm).
  - 3. Seal new crickets by placing continuous bead of recommended sealant under the flanges before they are mechanically attached to the curb unit and metal roof panel.
  - 4. Stitch-screw cricket flanges to the curb unit and metal roof panel while sealant is wet, using fasteners.
- E. Treatment of Ponding Water Areas: Make every effort to mechanically eliminate all ponding water areas on the roof prior to application of coating products. Ponding water is defined as water that does not properly drain and remains on the roof for more than 48 hours after precipitations stops.
- F. Repair dented or damaged metal roof panels:
  - 1. Mechanically remove dents to the maximum extent possible.
  - 2. If ribs are broken, cover the broken rib area with a sheet metal cap.
  - 3. Seal sheet metal rib caps to the roof by applying manufacturer's recommended flashing over the entire broken rib area to be capped prior to attaching the cap with fasteners.
  - 4. Seal all newly created rib cap seams and fasteners.
  - 5. Remove and replace roof panels that are severely damaged prior to application of liquid applied roofing system.
- G. Re-tighten, secure, or replace all fasteners as necessary.
  - 1. Replace all stripped fasteners with larger diameter fasteners, and re-secure the area by adding a new fastener next to the one that was stripped.
  - 2. Replace all missing fasteners.
  - 3. Fastening pattern may require modification to facilitate proper installation of the system.



- H. Pressure wash metal substrates with water, minimum working pressure of 3,000 psi (20 MPa), to remove all delaminating paint and coatings dirt, dust, and waste products.
  - 1. Use Roto-spray tip to expedite metal panel cleaning.
  - 2. Completely remove all existing silicone-based sealants.
  - 3. Use sand injection system as required.
  - 4. Use bleach solution to remove living organisms such as algae, mold, or fungus.
- I. Make every effort to remove asphaltic roofing elements. Removal efforts shall include use of methods such as pressure washing, scrapers, wire brushes, electric drill wire-wheels, or other similar tools.
  - 1. Residual asphalt is defined as asphaltic material remaining after the exercise of all required removal efforts, and exists when there is asphaltic material greater in thickness than 0.003 inches (0.08 mm) over an area greater than 1 square foot (0.1 square meter).
  - 2. Coat residual asphalt with manufacturer's recommended primer.
- J. Remove all loose, flaking or powdery rust by wire brushing if it has not been removed during the pressure washing.
  - 1. Use appropriate primer prior to coating.
  - 2. Replace roof panels which are corroded to the point where holes are present.
- K. Where roof panel surfaces are known or suspected to contain fluoropolymers, prepare test patches with and without the use of XR-2000 Primer. Apply XR-2000 Primer on pre-finished metal panels where indicated by test patch results.
- L. Pitch Pans: Cap with sheet metal so they may be sealed with coating products.
- M. Neoprene Pipe Boots: Install neoprene boots prior to flashing work being performed for pipe penetrations when recommended by manufacturer. Neoprene boots shall be sealed to the roof using a bead sealant prior to mechanical attachment with fasteners.
- N. Open Ridge Vents: Replace open ridge vents or install sheet metal caps over vents where rusted on the inside or located in a harsh environment.
  - 1. Do not seal weep holes on the vents.
- O. Condensate Lines: Condensate lines shall be installed from HVAC units to gutters as part of the overall drainage system. The type of piping used for condensate lines may vary depending on local building codes.
- P. Deteriorated Seams and Cracks: Apply flashing and fabric to delaminated or open seams in 3-course installation.

#### 3.4 INSTALLATION FOR LIQUID-APPLIED ROOFING OVER NON-METAL SUBSTRATES

- A. Install in accordance with manufacturer's instructions, approved submittals, and in proper relationship with adjacent construction.
  - 1. Take special care when moving spray hoses and other equipment on the roof so that flashing work and encapsulated fastener heads are not damaged. Also, all spray equipment shall remain on the ground for the duration of the job.
  - 2. If there will be an extended period of time (6 months or greater) between application of base and finish coats, the base coat shall be thoroughly cleaned before applying the finish coat.
  - 3. Walkways designed for metal roofing systems shall be installed in all high traffic areas.
- B. Flashing Application:
  - 1. After completion of substrate preparation, flash all flashing details, penetrations and curbs per manufacturer's recommendations, so that water may flow over the various flashing details.



2. Parapet Walls: Secure all parapet wall details within the roof system and seal with 12 inches (305 mm) minimum width of manufacturer's recommended flashing. Fill all voids and open areas with polyurethane foam prior to application of flashing membrane.
3. Curb Flashings: Flash all curb flashings, including cricket details, with 12 inches (305 mm) minimum width of manufacturer's recommended flashing. Encapsulate all fasteners. Do not bridge fasteners. Cut fabric around all fasteners so that fabric lies flat.
4. Penetrations: Apply flashing around the base of the penetration extending at least 6 inches (152 mm) onto the vertical and 6 inches (152 mm) onto the base. Embed 12 inches (305 mm) width of fabric using additional flashing as necessary. Cut the fabric to accommodate the shape of the penetration. Both the top and bottom of neoprene pipe boots shall be flashed.
5. Skylights: Treat curb skylights in the same fashion as curb flashings. After flashing work has been completed and the coating has cured, treat deteriorated fiberglass skylight panels with sealer.
6. Gutters: Trowel or brush apply sealant to the interior or exterior gutter incorporating 12 inches (305 mm) fabric at all gutter seams. Gutter shall be completely clean and dry before applying sealant
7. Ponding Water Areas: The severity of the ponding water condition will determine the requirements for additional preparation.
8. Inspect preliminary work and flashing details for problem areas, such as gaps, cracks, fishmouths, and air pockets, to ensure that work is complete and satisfactory.

C. Coating Application:

1. Treat seams as required by manufacturer for indicated warranty.
2. Apply foundation coat at rate required by manufacturer for indicated warranty.
3. Apply finish coats at rate required by manufacturer for indicated warranty.
4. Allow at least 24 hours of drying time after application of each coat, then inspect and correct any unsatisfactory conditions.

### 3.5 INSTALLATION FOR LIQUID-APPLIED ROOFING OVER METAL SUBSTRATES

A. Install in accordance with manufacturer's instructions, approved submittals, and in proper relationship with adjacent construction.

1. Take special care when installing dark colors.
2. Always spray wet material to wet material to ensure spray lines do not appear.
3. Take special care when moving spray hoses and other equipment on the roof so that flashing work and encapsulated fastener heads are not damaged. Also, all spray equipment shall remain on the ground for the duration of the job.
4. If there will be an extended period of time (6 months or greater) between application of base and finish coats, the base coat shall be thoroughly cleaned before applying the finish coat.
5. Walkways designed for metal roofing systems shall be installed in all high traffic areas.

B. Flashing Application:

1. After completion of substrate preparation, flash all flashing details, penetrations and curbs per manufacturer's recommendations, so that water may flow over the various flashing details.
2. Rakes: Secure and seal fixed rake details with 12 inches (305 mm) minimum width of manufacturer's recommended flashing. Where fixed rake is fastened to top of roof panel ribs and extends back into the roof, trim off excess metal and follow horizontal seam flashing procedures. Fill all voids and open areas with polyurethane foam.
3. Parapet Walls: Secure all parapet wall details within the roof system and seal with 12 inches (305 mm) minimum width of manufacturer's recommended flashing. Fill all voids and open areas with polyurethane foam prior to application of flashing membrane.
4. Curb Flashings: Flash all curb flashings, including cricket details, with 12 inches (305 mm) minimum width of manufacturer's recommended flashing. Encapsulate all fasteners. Do not bridge fasteners. Cut fabric around all fasteners so that fabric lies flat.



5. Penetrations: Apply flashing around the base of the penetration extending at least 6 inches (152 mm) onto the vertical and 6 inches (152 mm) onto the base. Embed 12 inches (305 mm) width of fabric using additional flashing as necessary. Cut the fabric to accommodate the shape of the penetration. Both the top and bottom of neoprene pipe boots shall be flashed.
6. Skylights: Treat curb skylights in the same fashion as curb flashings. After flashing work has been completed and the coating has cured, treat deteriorated fiberglass skylight panels with sealer.
7. Gutters: Trowel or brush apply sealant to the interior or exterior gutter incorporating 12 inches (305 mm) fabric at all gutter seams. Gutter shall be completely clean and dry before applying sealant
8. Ponding Water Areas: The severity of the ponding water condition will determine the requirements for additional preparation.

C. Coating Application:

1. Treat seams as required by manufacturer for indicated warranty.
2. Apply primer recommended by coating manufacturer for substrate.
3. Encapsulate exposed fasteners with Butter Grade Flashing and fabric.
4. Apply foundation coat at rate required by manufacturer for indicated warranty.
5. Apply finish coats at rate required by manufacturer for indicated warranty.
6. Allow at least 24 hours of drying time after application of each coat, then inspect and correct any unsatisfactory conditions.

### 3.6 FIELD QUALITY CONTROL

- A. Installer shall take photographs of representative roof areas, including detail work, before work commences, after the surface has been properly prepared, after all flashing and detail work has been performed, and after the spray application of the coating membrane.
- B. Field Inspection: Coordinate field inspection in accordance with appropriate sections in Division 01.
  1. Inspect Preliminary Work and Flashing Details for problem areas, such as gaps, cracks, fishmouths, and air pockets, to ensure that work is complete and satisfactory.
  2. Inform Architect and manufacturer's Field Services Department when all preliminary work and flashing details will be complete and the Installer is ready to proceed with application of roof coating. Allow a minimum of two weeks for the interim inspection to be made by the manufacturer's Field Services Department.
  3. Any final roofing installation prior to this interim inspection is subject to rejection by the Architect and manufacturer's Field Services Department.
- C. Manufacturer's Services: Coordinate manufacturer's services in accordance with appropriate sections in Division 01.
- D. Provide the following support for on-site inspections by a representative from manufacturer's Field Services Department, list is not comprehensive:
  1. Representative from the installer's company who has authority to make binding decisions
  2. Required means to access all areas of the treated roof.
  3. Previous photographs of the roof, including test patch results, as applicable
  4. Products and application equipment required to repair roof areas where destructive tests are to be performed by manufacturer's Field Services Department.

### 3.7 CLEANING AND PROTECTION

- A. Clean products in accordance with the manufacturer's recommendations.
- B. Touch-up, repair or replace damaged products before Substantial Completion.
  1. Damaged areas are to be cut, cleaned and dried.



2. Apply flashing or coating with bulking agent, and feather out onto the existing membrane.
3. If a new penetration area has been cut, embed fabric into the flashing coating with bulking agent according to standard specifications.
4. Once the flashing has cured, finish coat may be applied for aesthetic uniformity.

END OF SECTION

**Please see attached drawings for details on current conditions and the work to be completed.**



**Proposal Submission Form**

**Checklist**

- Contractor complies with insurance requirements**
- References attached**
- Subcontractor information and references attached (if applicable)**
- E-Verify Affidavit attached**
- Application for Public Benefit attached**
- Approach to Project**

I understand that I will need to provide a certificate of insurance as outlined in the attached insurance requirements prior to beginning work. I further understand that I will be required to submit the attached Prime and Subcontractor's Work Authorization Certification and affidavit verifying status for County Public Benefit Application (copy attached), prior to beginning work.

I certify that the bid below includes all work described in these bid documents and meets all specifications outlined in the bid documents:

Price to complete the work Described in this RFP : \_\_\_\_\_

Company: \_\_\_\_\_

Address: \_\_\_\_\_

Contact: \_\_\_\_\_ E-mail Address: \_\_\_\_\_

Phone: \_\_\_\_\_

Signature of Company Official: \_\_\_\_\_



## References

**Government/Company:** \_\_\_\_\_

**Contact Person:** \_\_\_\_\_

**Title:** \_\_\_\_\_

**Phone Number:** \_\_\_\_\_

**Project Description:** \_\_\_\_\_

\_\_\_\_\_

**Date of Project:** \_\_\_\_\_

---

**Government/Company:** \_\_\_\_\_

**Contact Person:** \_\_\_\_\_

**Title:** \_\_\_\_\_

**Phone Number:** \_\_\_\_\_

**Project Description:** \_\_\_\_\_

\_\_\_\_\_

**Date of Project:** \_\_\_\_\_

---

**Government/Company:** \_\_\_\_\_

**Contact Person:** \_\_\_\_\_

**Title:** \_\_\_\_\_

**Phone Number:** \_\_\_\_\_

**Project Description:** \_\_\_\_\_

\_\_\_\_\_

**Date of Project:** \_\_\_\_\_



**Receipt of Addenda**

**Number**

**Signature**

\_\_\_\_\_

\_\_\_\_\_

\_\_\_\_\_

\_\_\_\_\_

\_\_\_\_\_

\_\_\_\_\_

\_\_\_\_\_

\_\_\_\_\_

\_\_\_\_\_

\_\_\_\_\_

\_\_\_\_\_

\_\_\_\_\_

\_\_\_\_\_

\_\_\_\_\_





### **Contractor Insurance Requirements**

**Contractor's Insurance Provisions:** During the life of the contract and for such additional time as may be required, the contractor will provide, pay for, and maintain in full force and effect the insurance outlined here for coverage at not less than the prescribed minimum limits of liability, covering the contractor's activities, those of any and all subcontractors, or anyone directly or indirectly employed by any of them, or by anyone for whose acts any of them may be liable.

**Certificate of Insurance:** Before starting work, the contractor will give the owner a certificate of insurance completed by a duly authorized representative of their insurer certifying that at least the minimum coverage required here are in effect and specifying that the liability coverage are written on an occurrence form and that the coverage will not be canceled, non-renewed, or materially changed by endorsement or through issuance of other policies of insurance without 60 days advance written notice to:

Jones County Board of Commissioners  
P. O. Box 1359  
Gray, Ga. 31032

Failure of the owner to demand such certificate or other evidence of full compliance with these insurance requirements or failure of the owner to identify a deficiency from evidence provided will not be construed as a waiver of the contractor's obligation to maintain such insurance.

The acceptance of delivery by the owner of any certificate of insurance evidencing the required coverage and limits does not constitute approval or agreement by the owner that the insurance requirements have been met or that the insurance policies shown in the certificates of insurance are in compliance with the requirements.

If the contractor fails to maintain the insurance as set forth here, the owner will have the right, but not the obligation, to purchase said insurance at the contractor's expense. Alternately, the contractor's failure to maintain the required insurance may result in termination of this contract at owner's option.

**Insurance Primary:** All coverage required of the contractor will be primary over any insurance or self-insurance program carried by the owner.

**No Reduction or Limit of Obligation:** By requiring insurance, the owner does not represent that coverage and limits will necessarily be adequate to protect the contractor. Insurance affected or procured by the contractor will not reduce or limit the contractor's contractual obligation to indemnify and defend the owner for claims or suits which result from or are connected with the performance of this contract.



**Duration of Coverage:** All required coverage will be maintained without interruption during the entire term of this contract and following final acceptance of the property by the owner.

**Subcontractor's Insurance:** The contractor will cause each sub-contractor employed by contractor to purchase and maintain insurance of the types specified below. When requested by the owner, the contractor will furnish copies of certificates of insurance evidencing coverage for each subcontractor.

**Insurance Limits and Coverage:** To the extent applicable, the amounts and types of insurance will conform to the minimum terms, conditions, and coverage of Insurance Service Office (ISO) policies, forms, and endorsements.

If the contractor has any self-insured retentions, or deductible under any of the following minimum required coverage, the contractor must identify on the certificate of insurance the nature and amount of such self-insured retentions or deductible and provide satisfactory evidence of financial responsibility for such obligations. All self-insured retentions or deductible will be the contractor's sole responsibility.

**Commercial General Liability:** The contractor will maintain commercial general liability insurance covering all operations by or on behalf of the contractor on an occurrence basis against claims for personal injury (including bodily injury and death) and property damage (including loss of use). Such insurance will have these minimum limits and coverage:

Minimum limits: \$1,000,000 each occurrence  
\$2,000,000 general aggregate with dedicated limits per project site  
\$2,000,000 products and completed operations aggregate

**Worker's Compensation:** Contractor's that have employees, sub-contractors, helpers, assistants, or individuals providing assistance on the contract work will maintain workers' compensation covering them during the term of this contract.

Minimum limits: Workers' compensation –Statutory Limit  
Employer's liability:  
\$100,000 bodily injury for each accident  
\$100,000 bodily injury by disease for each employee  
\$500,000 bodily injury disease aggregate



**Contractor Affidavit under O.C.G.A. § 13-10-91(b) (1)**

By executing this affidavit, the undersigned contractor verifies its compliance with O.C.G.A. § 13-10-91, stating affirmatively that the individual, firm or corporation which is engaged in the physical performance of services on behalf of (Jones County) has registered with, is authorized to use and uses the federal work authorization program commonly known as E-Verify, or any subsequent replacement program, in accordance with the applicable provisions and deadlines established in O.C.G.A. § 13-10-91. Furthermore, the undersigned contractor will continue to use the federal work authorization program throughout the contract period and the undersigned contractor will contract for the physical performance of services in satisfaction of such contract only with subcontractors who present an affidavit to the contractor with the information required by O.C.G.A. § 13-10-91(b). Contractor hereby attests that its federal work authorization user identification number and date of authorization are as follows:

\_\_\_\_\_  
Federal Work Authorization User Identification Number

\_\_\_\_\_  
Date of Authorization

\_\_\_\_\_  
Name of Contractor

\_\_\_\_\_  
Name of Project

\_\_\_\_\_  
Name of Public Employer

I hereby declare under penalty of perjury that the foregoing is true and correct.

Executed on \_\_\_\_\_, \_\_\_, 202\_\_ in \_\_\_\_\_ (city), \_\_\_\_\_ (state).

\_\_\_\_\_  
Signature of Authorized Officer or Agent

\_\_\_\_\_  
Printed Name and Title of Authorized Officer or Agent

SUBSCRIBED AND SWORN BEFORE ME  
ON THIS THE \_\_\_\_\_ DAY OF \_\_\_\_\_, 202\_\_.

\_\_\_\_\_  
NOTARY PUBLIC

My Commission Expires:  
\_\_\_\_\_



**Subcontractor Affidavit under O.C.G.A. § 13-10-91(b) (2)**

By executing this affidavit, the undersigned subcontractor verifies its compliance with O.C.G.A. § 13-10-91, stating affirmatively that the individual, firm or corporation which is engaged in the physical performance of services under a contract with ( \_\_\_\_\_ -name of contractor) on behalf of (Jones County) has registered with, is authorized to use and uses the federal work authorization program commonly known as E-Verify, or any subsequent replacement program, in accordance with the applicable provisions and deadlines established in O.C.G.A. § 13-10-91. Furthermore, the undersigned subcontractor will continue to use the federal work authorization program throughout the contract period and the undersigned subcontractor will contract for the physical performance of services in satisfaction of such contract only with sub-subcontractors who present an affidavit to the subcontractor with the information required by O.C.G.A. § 13-10-91(b). Additionally, the undersigned subcontractor will forward notice of the receipt of an affidavit from a sub-subcontractor to the contractor within five business days of receipt. If the undersigned subcontractor receives notice of receipt of an affidavit from any sub-subcontractor that has contracted with a sub-subcontractor to forward, within five business days of receipt, a copy of such notice to the contractor. Subcontractor hereby attests that its federal work authorization user identification number and date of authorization are as follows:

\_\_\_\_\_  
Federal Work Authorization User Identification Number

\_\_\_\_\_  
Date of Authorization

\_\_\_\_\_  
Name of Subcontractor

\_\_\_\_\_  
Name of Project

\_\_\_\_\_  
Name of Public Employer

I hereby declare under penalty of perjury that the foregoing is true and correct.

Executed on \_\_\_\_\_, \_\_, 202\_\_ in \_\_\_\_\_ (city), \_\_\_\_\_ (state).

\_\_\_\_\_  
Signature of Authorized Officer or Agent

\_\_\_\_\_  
Printed Name and Title of Authorized Officer or Agent

SUBSCRIBED AND SWORN BEFORE ME  
ON THIS THE \_\_\_\_\_ DAY OF \_\_\_\_\_, 202\_\_.

\_\_\_\_\_  
NOTARY PUBLIC

My Commission expires: \_\_\_\_\_



**Subcontractor Affidavit under O.C.G.A. § 13-10-91(b) (3)**

By executing this affidavit, the undersigned subcontractor verifies its compliance with O.C.G.A. § 13-10-91, stating affirmatively that the individual, firm or corporation which is engaged in the physical performance of services under a contract with ( \_\_\_\_\_ -name of contractor) on behalf of (Jones County) has registered with, is authorized to use and uses the federal work authorization program commonly known as E-Verify, or any subsequent replacement program, in accordance with the applicable provisions and deadlines established in O.C.G.A. § 13-10-91. Furthermore, the undersigned subcontractor will continue to use the federal work authorization program throughout the contract period and the undersigned subcontractor will contract for the physical performance of services in satisfaction of such contract only with sub-subcontractors who present an affidavit to the subcontractor with the information required by O.C.G.A. § 13-10-91(b). Additionally, the undersigned subcontractor will forward notice of the receipt of an affidavit from a sub-subcontractor to the contractor within five business days of receipt. If the undersigned subcontractor receives notice of receipt of an affidavit from any sub-subcontractor that has contracted with a sub-subcontractor to forward, within five business days of receipt, a copy of such notice to the contractor. Subcontractor hereby attests that its federal work authorization user identification number and date of authorization are as follows:

\_\_\_\_\_  
Federal Work Authorization User Identification Number

\_\_\_\_\_  
Date of Authorization

\_\_\_\_\_  
Name of Subcontractor

\_\_\_\_\_  
Name of Project

\_\_\_\_\_  
Name of Public Employer

I hereby declare under penalty of perjury that the foregoing is true and correct.

Executed on \_\_\_\_\_, \_\_\_\_, 202\_\_ in \_\_\_\_\_ (city), \_\_\_\_\_ (state).

\_\_\_\_\_  
Signature of Authorized Officer or Agent

\_\_\_\_\_  
Printed Name and Title of Authorized Officer or Agent

SUBSCRIBED AND SWORN BEFORE ME

ON THIS THE \_\_\_\_\_ DAY OF \_\_\_\_\_, 202\_\_.

\_\_\_\_\_  
NOTARY PUBLIC

My Commission Expires: \_\_\_\_\_



**Affidavit Verifying Status  
County Public Benefit Application**

**Jones County Board of Commissioners**

By executing this affidavit under oath, as an applicant for a Jones County Georgia Business Occupation Tax Certificate, Alcohol License, Taxi Permit or other public benefit as referenced in O.C.G.A. Section 50-36-1, I am stating the following with respect to my application for a Jones County Business Occupation Tax Certificate, Alcohol License, Taxi Permit or other public benefit (circle one) for \_\_\_\_\_ . [Name of natural person applying on behalf of individual, business, corporation, partnership, or other private entity]

1) \_\_\_\_\_ I am a United States citizen

**OR**

2) \_\_\_\_\_ I am a legal permanent resident 18 years of age or older or I am an otherwise qualified alien or non-immigrant under the Federal Immigration and Nationality Act 18 years of age or older and lawfully present in the United States.\*

In making the above representation under oath, I understand that any person who knowingly and willfully makes a false, fictitious, or fraudulent statement or representation in an affidavit shall be guilty of a violation of Code Section 16-10-20 of the Official Code of Georgia.

Signature of Applicant:

Date

\_\_\_\_\_

\_\_\_\_\_

Printed Name:

\_\_\_\_\_

SUBSCRIBED AND SWORN  
BEFORE ME ON THIS THE

\_\_\_\_ DAY OF \_\_\_\_\_, 20\_\_

\*

\_\_\_\_\_

Alien Registration number for non-citizens

Notary Public \_\_\_\_\_

My Commission Expires: \_\_\_\_\_

**\*Note:** O.C.G.A. § 50-36-1(e)(2) requires that aliens under the federal Immigration and Nationality Act, Title 8 U.S.C., as amended, provide their alien registration number. Because legal permanent residents are included in the federal definition of "alien", legal permanent residents must also provide their alien registration number. Qualified aliens that do not have an alien registration number may supply another identifying number below:

\_\_\_\_\_



**OPTIONAL — FOR NON-BIDDERS ONLY**

**JONES COUNTY BOARD OF COMMISSIONERS – PURCHASING DEPARTMENT  
NO BID STATEMENT**

In an effort to make the procurement of goods and services for the County as competitive as possible, we are soliciting information from contractors and/or vendors who cannot bid. Your responsiveness and constructive comments will be appreciated. Completion of this form will assist us in evaluating factors which relate to the competitiveness of our bids. Please check any of the boxes below which may apply. Please explain any issues that you feel needs to be addressed.

- Specifications - Restrictive, too light", unclear, specialty item, geared toward one (1) brand or manufacturer only. *(Please explain in detail below).*
- Manufacturing - Unique item, production time for model has expired, etc.
- Bid Time - Insufficient time to properly respond to bid or proposal.
- Delivery Time - Specified delivery time cannot be met.
- Payment - Payment terms unacceptable. *(Please be specific)*
- Bonding - We are unable to meet bonding requirements.
- Insurance - We are unable to meet insurance requirements.
- Removal - Remove our firm from your bidders list for the particular commodity or service.
- Keep - Please keep our company on your bidders list for future reference.
- Project is : \_\_\_\_ / too Large \_\_\_\_ / too Small \_\_\_\_ / site or location is too distant
- Miscellaneous - Do not wish to bid, do not handle this type of item(s) or services, unable to compete, Contract clauses are unacceptable, etc. *(Please be specific)*
- Our company would only be interested in this project as a subcontractor or supplier.

**VENDOR STATEMENT:**

---



---



---

Bid Description: \_\_\_\_\_

Company Name: \_\_\_\_\_

Company Official Name: \_\_\_\_\_

Company Official Signature: \_\_\_\_\_

Telephone Number: \_\_\_\_\_

Email Address: \_\_\_\_\_

**JONES COUNTY BOARD OF COMMISSIONERS – PURCHASING DEPARTMENT  
(478) 986-8233**

[Julie.happoldt@jonescountyga.org](mailto:Julie.happoldt@jonescountyga.org)

# INSTALL NEW FLUID APPLIED MEMBRANE ROOF JONES COUNTY GOVERNMENT CENTER

**P.O. BOX 1359  
GRAY, GEORGIA**

**FOR**

## JONES COUNTY BOARD OF COMMISSIONERS JONES COUNTY GOVERNMENT CENTER

**GEORGIA HIGHWAY 11  
P.O. BOX 1359  
GRAY, GEORGIA 31032**

**BY**

**MICHAEL E. CLARK AND ASSOCIATES, INC.  
3643 VINEVILLE AVE.  
MACON, GEORGIA 31204**

DATE	REVISIONS



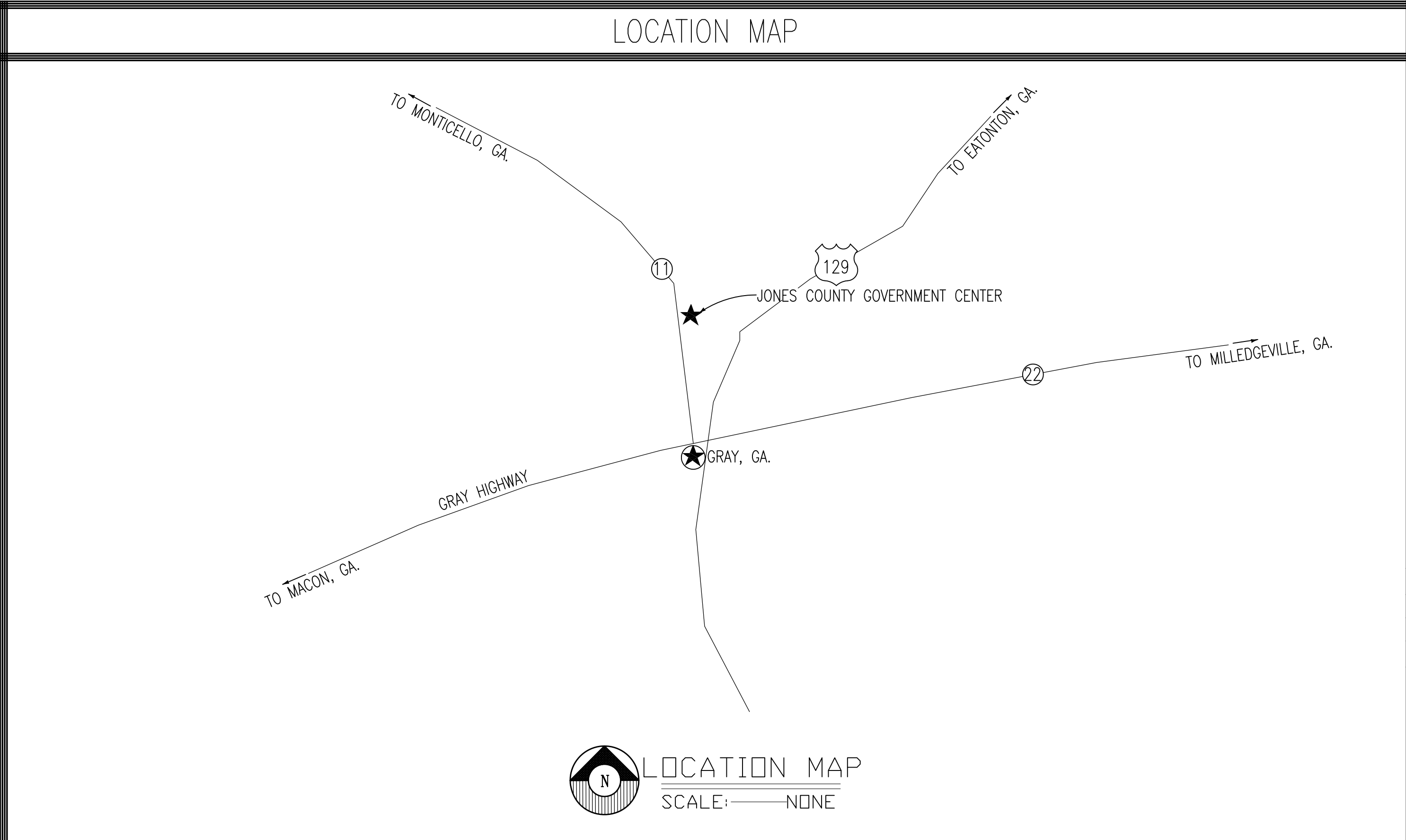
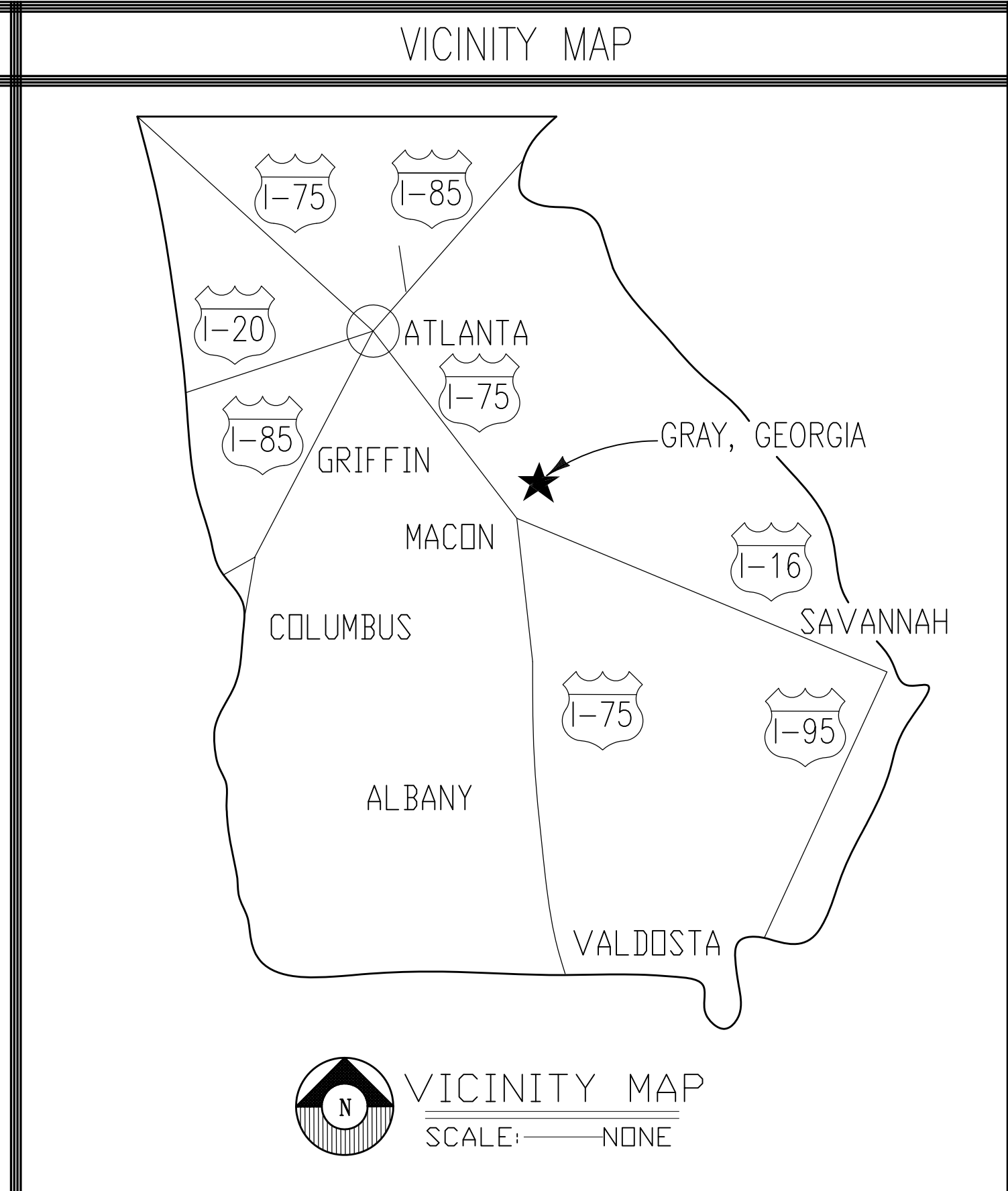
THIS DOCUMENT, THE IDEAS AND DESIGNS INCORPORATED HEREIN, AS AN INSTRUMENT OF PROFESSIONAL SERVICE IS THE PROPERTY OF THE JONES COUNTY BOARD OF COMMISSIONERS, AND IS NOT TO BE USED, IN WHOLE OR IN PART, FOR ANY OTHER PROJECT WITHOUT THEIR WRITTEN AUTHORIZATION.

**MEC&A**  
MICHAEL E. CLARK & ASSOC., INC.  
Building Enclosure Consultants  
3643 Vineville Avenue  
MACON, GEORGIA 31204  
(478)471-6661 PHONE (478)471-6690 FAX

INDEX OF DRAWINGS	
X-1	COVER SHEET
R-1	DEMOLITION ROOF PLAN
R-2	NEW WORK ROOF PLAN
R-3	DETAILS
R-4	DETAILS

DRAWING SYMBOLS	
	DETAIL NUMBER
	SPEC. SECTION NUMBER
	DETAIL NUMBER
	SHEET SHOWN ON SHEET REFERENCED FROM
	SECTION
	SHEET SHOWN ON SHEET REFERENCED FROM

ABBREVIATIONS	
APPROX.	APPROXIMATELY
DN.	DOWN
EXIST.	EXISTING
FT.	FOOT
L.F.	LINEAR FOOT (FEET)
MECH.	MECHANICAL
REQ'D.	REQUIRED
SHT.	SHEET
SPECS.	SPECIFICATIONS
T.B.R.	TO BE REMOVED
T.R.	TO REMAIN
ST	STREET
RD	ROAD
DR	DRIVE
BLVD	BOULEVARD
INS.	INSULATION
GALV.	GALVANIZED
CORR.	CORRUGATED
DS	DOWNSPOUT
E.F.	EXHAUST FAN
V.T.R.	VENT THRU ROOF
SUSP.	SUSPENDED
ACQU.	ACOUSTICAL
CLG.	CEILING
UN.D.	UNLESS NOTED OTHERWISE
SSMR	STANDING SEAM METAL ROOF
SB	SPLASH BLOCK



COVER SHEET  
INSTALL NEW FLUID APPLIED MEMBRANE ROOF  
JONES COUNTY GOVERNMENT CENTER  
GRAY, GEORGIA

Drawn By	C. BELL
Checked By	MEC
Date	05/20/2022
Job No.	2022-13
Drawing Number	X-1

SHEET 1 OF 5

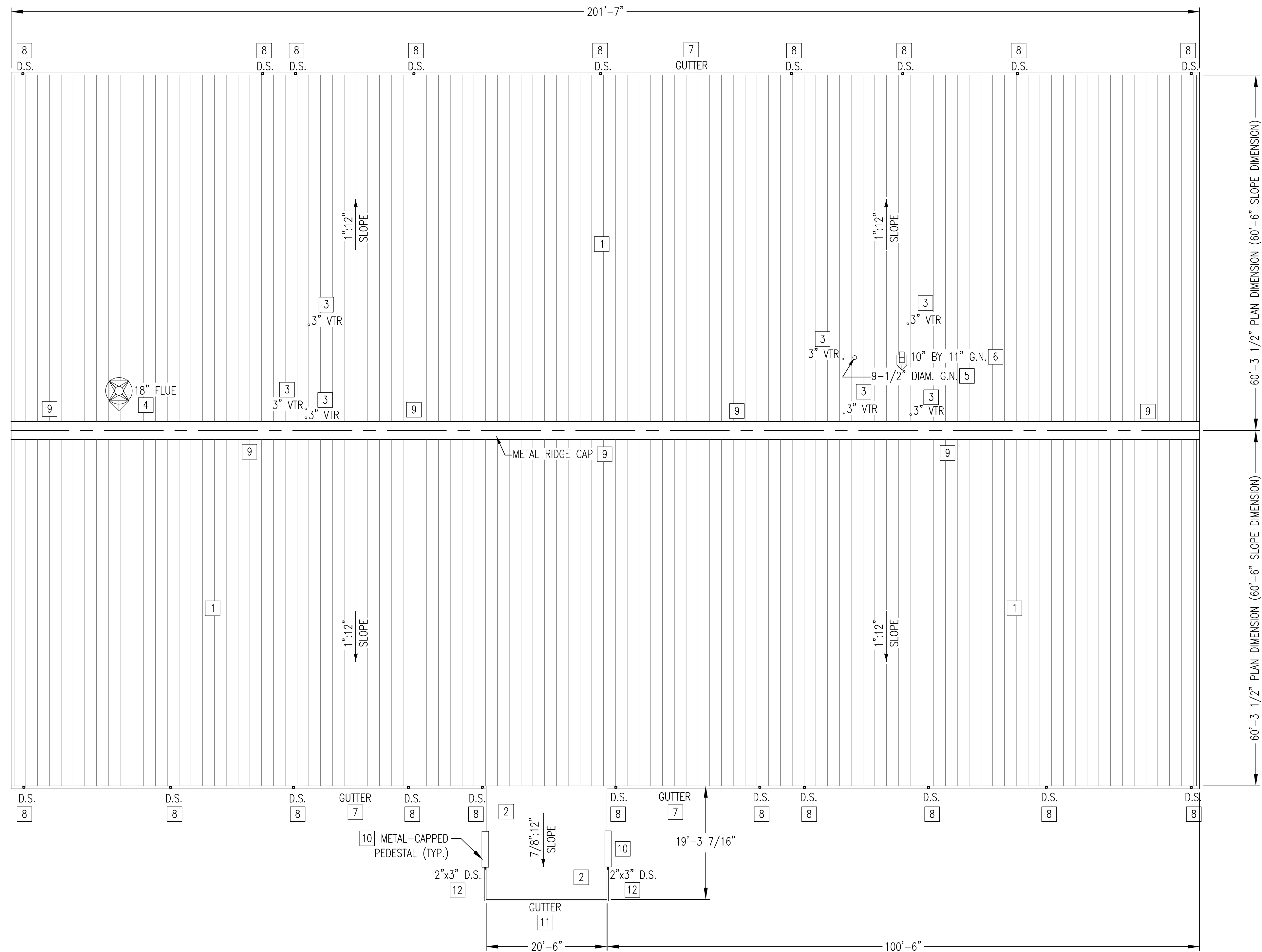


**LEGEND**

- 1":12" SLOPE → DIRECTION AND APPROXIMATE MAGNITUDE OF EXIST. ROOF SLOPE, BUILT INTO DECK U.N.O.
- 3" VTR ○ EXISTING PLUMBING VENT THRU ROOF (VTR) W/ SIZE
- ⊕ EXISTING SQ.-TO-RND CURBED FLUE AND UPSLOPE CRICKET W/ SIZE
- ⊕ EXISTING CURBED GOOSENECK VENT (GN) AND UPSLOPE CRICKET W/ SIZE
- D.S. EXISTING 7" DEEP x 6" WIDE GUTTER W/ 3"x4" DOWNSPOUT (U.N.O.)
- ≡≡≡ EXISTING METAL RIDGE CAP

**DEMOLITION NOTES (THIS SHEET ONLY)**

- 1 EXISTING TRAPEZOIDAL STANDING SEAM METAL RETROFIT ROOF SYSTEM, FLASHINGS, AND TRIM TO REMAIN AND BE CLEANED IN PREPARATION FOR THE INSTALLATION OF THE NEW FLUID APPLIED MEMBRANE ROOF SYSTEM DURING THE NEW WORK PHASE. REPLACE ALL LOOSE, MISSING, OR DAMAGED FASTENERS.
- 2 EXISTING SINGLE PLY OVER METAL RETROFIT ROOF SYSTEM TO REMAIN AND BE CLEANED IN PREPARATION FOR THE INSTALLATION OF THE NEW FLUID APPLIED MEMBRANE ROOF SYSTEM DURING THE NEW WORK PHASE.
- 3 EXISTING PLUMBING VENT THRU ROOF (VTR) TO REMAIN. FLASHING BOOT TO BE REMOVED. EXTEND PIPE AS REQUIRED (TYP.).
- 4 EXISTING CURBED FLUE W/ SQUARE-TO-ROUND (SQ.-TO-RND) ADAPTER TO REMAIN. CLEAN CURB AS NECESSARY PRIOR TO INSTALLATION OF THE NEW FLUID APPLIED MEMBRANE ROOF SYSTEM DURING THE NEW WORK PHASE.
- 5 EXISTING ROUND GOOSENECK (GN) VENT PIPE TO REMAIN. CLEAN AS NECESSARY PRIOR TO INSTALLATION OF THE NEW FLUID APPLIED MEMBRANE ROOF SYSTEM DURING THE NEW WORK PHASE.
- 6 EXISTING CURBED GOOSENECK (GN) VENT TO REMAIN. CLEAN AS NECESSARY PRIOR TO INSTALLATION OF THE NEW FLUID APPLIED MEMBRANE ROOF SYSTEM DURING THE NEW WORK PHASE.
- 7 EXISTING 7" DEEP x 6" WIDE GUTTER TO REMAIN (TYP.).
- 8 EXISTING 3"x4" DOWNSPOUT TO REMAIN (TYP.).
- 9 EXISTING METAL RIDGE CAP TO REMAIN. CLEAN AS NECESSARY PRIOR TO INSTALLATION OF THE NEW FLUID APPLIED MEMBRANE ROOF SYSTEM DURING THE NEW WORK PHASE.
- 10 EXISTING METAL-CAPPED PEDESTAL TO REMAIN AND BE CLEANED AS NECESSARY PRIOR TO INSTALLATION OF THE NEW FLUID APPLIED MEMBRANE ROOF SYSTEM DURING THE NEW WORK PHASE (TYP.).
- 11 EXISTING 3" DEEP x 3 1/2" WIDE DOWNSPOUT TO REMAIN (TYP.).
- 12 EXISTING 2"x3" DOWNSPOUT TO REMAIN (TYP.).



DATE	REVISIONS

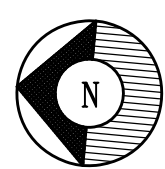


THIS DOCUMENT, THE IDEAS AND DESIGNS INCORPORATED HEREIN, AS AN INSTRUMENT OF PROFESSIONAL SERVICE IS THE PROPERTY OF THE JONES COUNTY BOARD OF COMMISSIONERS, AND IS NOT TO BE USED, IN WHOLE OR IN PART, FOR ANY OTHER PROJECT WITHOUT THEIR WRITTEN AUTHORIZATION.

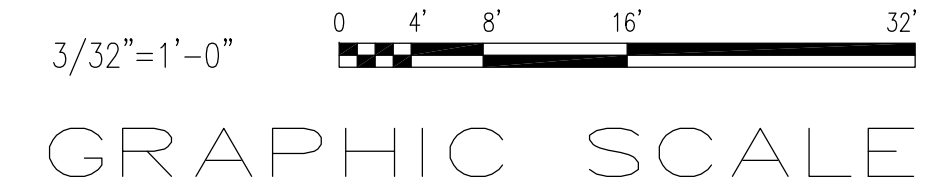
**MEC&A**  
 MICHAEL E. CLARK & ASSOC., INC.  
 Building Enclosure Consultants  
 3643 Vineville Avenue  
 MACON, GEORGIA 31204  
 (478)471-6661 PHONE (478)471-6690 FAX

DEMOLITION ROOF PLAN  
 INSTALL NEW FLUID APPLIED MEMBRANE ROOF  
 JONES COUNTY GOVERNMENT CENTER  
 HIGHWAY 11  
 GRAY, GEORGIA

Drawn By	C. BELL
Checked By	MEC
Date	05/20/2022
Job No.	2022-13
Drawing Number	

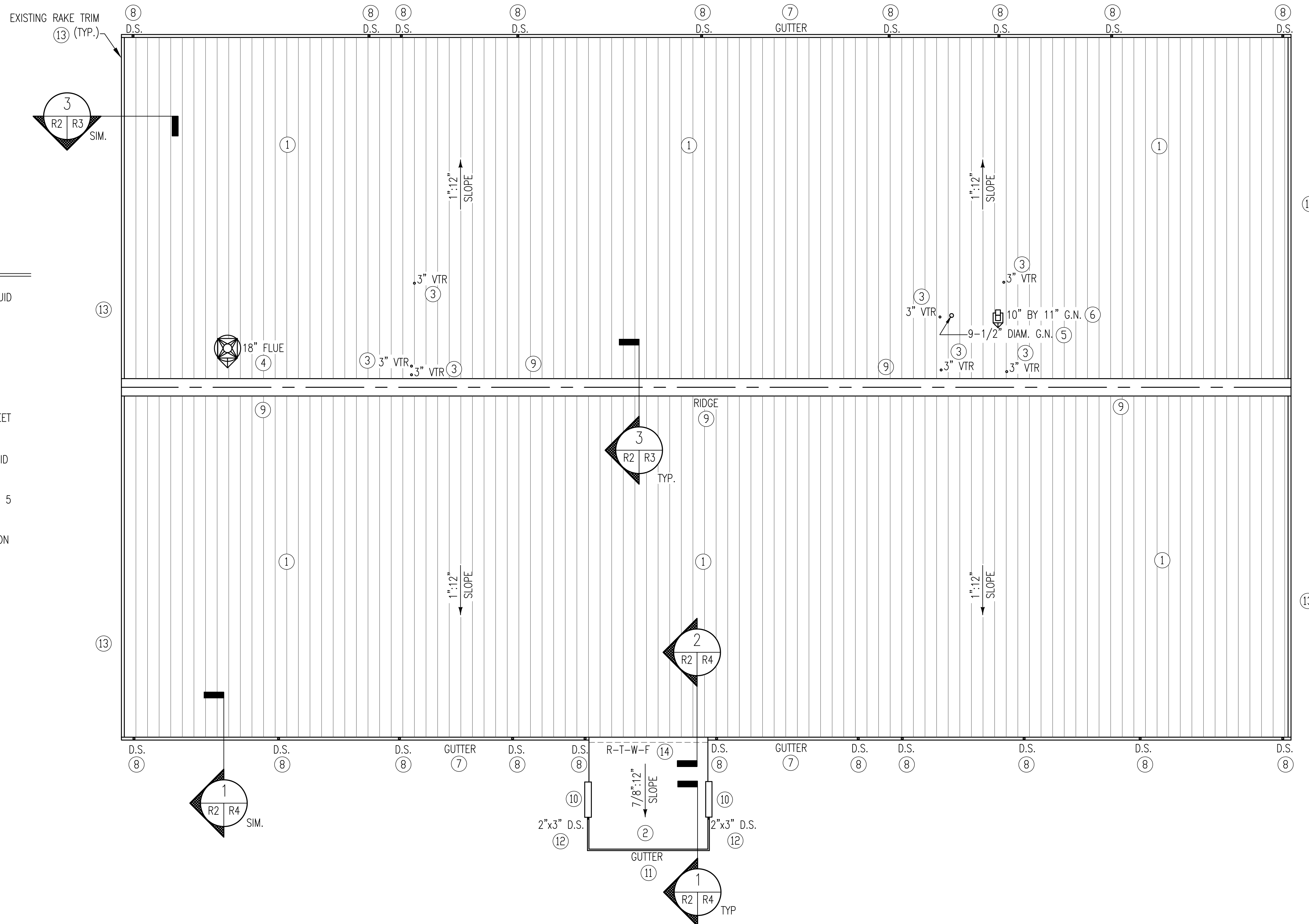


**DEMOLITION ROOF PLAN – JONES COUNTY GOVERNMENT CENTER**  
 SCALE: 3/32"=1'-0"



**LEGEND**

- 1":12' SLOPE → DIRECTION AND APPROXIMATE MAGNITUDE OF EXIST. ROOF SLOPE, BUILT INTO DECK U.N.O.
- 3" VTR ○ EXISTING PLUMBING VENT THRU ROOF (VTR) W/ SIZE
- EXISTING SQ.-TO-RND CURBED FLUE AND UPSLOPE CRICKET W/ SIZE
- ⊕ EXISTING CURBED GOOSENECK VENT (GN) AND UPSLOPE CRICKET W/ SIZE
- D.S. EXISTING 7" DEEP x 6" WIDE GUTTER W/ 3"x4" DOWNSPOUT (U.N.O.)
- R-T-W-F ROOF-TO-WALL FLASHING (R-T-W-F)



**NEW WORK NOTES (THIS SHEET ONLY)**

- ① EXISTING, CLEANED TRAPEZOIDAL STANDING SEAM METAL RETROFIT ROOF SYSTEM TO RECEIVE NEW FLUID APPLIED MEMBRANE ROOF SYSTEM. NEW FLUID APPLIED MEMBRANE ROOF SYSTEM TO CONSIST OF AN INITIAL BASE COAT (GRAY) FOLLOWED BY A TOP COAT (WHITE). SEE DETAIL 1 ON SHEET R-3 FOR FLASHING AT THE EXISTING ROOF PANEL SEAM.
- ② EXISTING, CLEANED SINGLE PLY PVC OVER METAL RETROFIT ROOF SYSTEM TO RECEIVE NEW FLUID APPLIED MEMBRANE ROOF SYSTEM. NEW FLUID APPLIED MEMBRANE ROOF SYSTEM TO CONSIST OF AN INITIAL BASE COAT (GRAY) FOLLOWED BY A TOP COAT (WHITE).
- ③ EXISTING PLUMBING VENT THRU ROOF (VTR) TO RECEIVE NEW FLASHING BOOT. SEE DETAIL 2 ON SHEET R-3 (TYP.).
- ④ EXISTING CURBED FLUE W/ SQUARE-TO-ROUND (SQ.-TO-RND) CURB ADAPTER TO RECEIVE NEW FLUID APPLIED FLASHING. SEE DETAIL 4 ON SHEET R-3.
- ⑤ EXISTING ROUND GOOSENECK (GN) VENT PIPE TO RECEIVE NEW FLUID APPLIED FLASHING. SEE DETAIL 5 ON SHEET R-3.
- ⑥ EXISTING CURBED GOOSENECK (GN) VENT TO RECEIVE NEW FLUID APPLIED FLASHING. SEE DETAIL 4 ON SHEET R-3.
- ⑦ NEW EAVE/GUTTER CONDITION. SIMILAR TO DETAIL 1 ON SHEET R-4 (SIM.).
- ⑧ EXISTING 3"x4" DOWNSPOUT TO REMAIN (TYP.).
- ⑨ NEW METAL RIDGE CAP FLASHING CONDITION. SEE DETAIL 3 ON SHEET R-3.
- ⑩ NEW METAL PEDESTAL COVER FLASHING CONDITION. SIMILAR TO DETAIL 2 ON SHEET R-4.
- ⑪ EXISTING DRIP EDGE INTO GUTTER CONDITION. SEE DETAIL 1 ON SHEET R-4 (TYP.).
- ⑫ EXISTING 2"x3" DOWNSPOUT TO REMAIN (TYP.).
- ⑬ NEW RAKE CONDITION. SIMILAR TO DETAIL 3 ON SHEET R-3.
- ⑭ NEW ROOF-TO-WALL FLASHING (R-T-W-F) CONDITION. SEE DETAIL 2 ON SHEET R-4.

DATE	REVISIONS



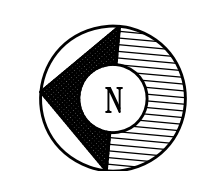
THIS DOCUMENT, THE IDEAS AND DESIGNS INCORPORATED HEREIN, AS AN INSTRUMENT OF PROFESSIONAL SERVICE IS THE PROPERTY OF THE JONES COUNTY BOARD OF COMMISSIONERS, AND IS NOT TO BE USED, IN WHOLE OR IN PART, FOR ANY OTHER PROJECT WITHOUT THEIR WRITTEN AUTHORIZATION.

**MEC&A**  
 MICHAEL E. CLARK & ASSOC., INC.  
 Building Enclosure Consultants  
 3643 Vineville Avenue  
 MACON, GEORGIA 31204  
 (478)471-6661 PHONE (478)471-6690 FAX

NEW WORK ROOF PLAN  
 INSTALL NEW FLUID APPLIED MEMBRANE ROOF  
 JONES COUNTY GOVERNMENT CENTER  
 HIGHWAY 11  
 GRAY, GEORGIA

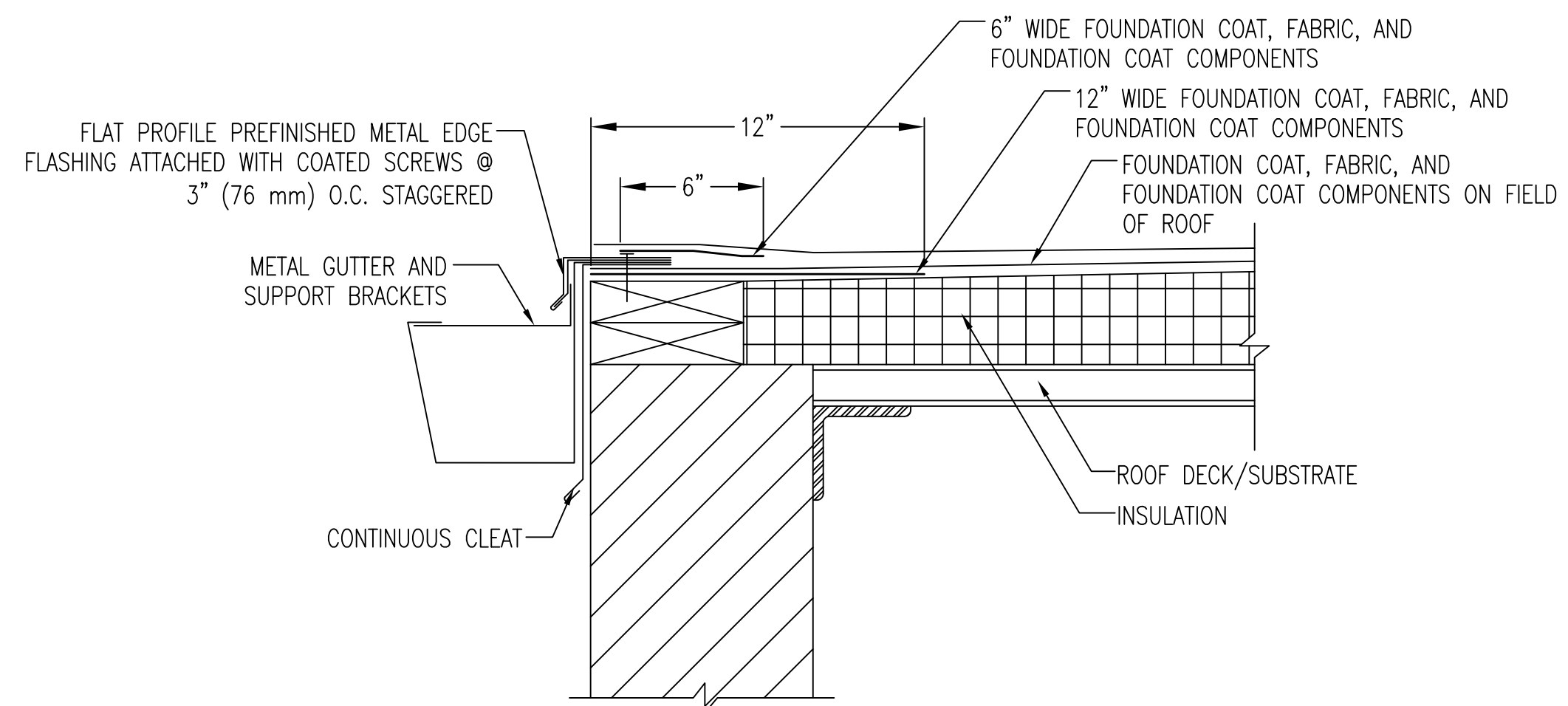
Drawn By	C. BELL
Checked By	MEC
Date	05/20/2022
Job No.	2022-13
Drawing Number	

R-2  
 SHEET 3 OF 5



NEW WORK ROOF PLAN – JONES COUNTY GOVERNMENT CENTER  
 SCALE: 3/32"=1'-0"

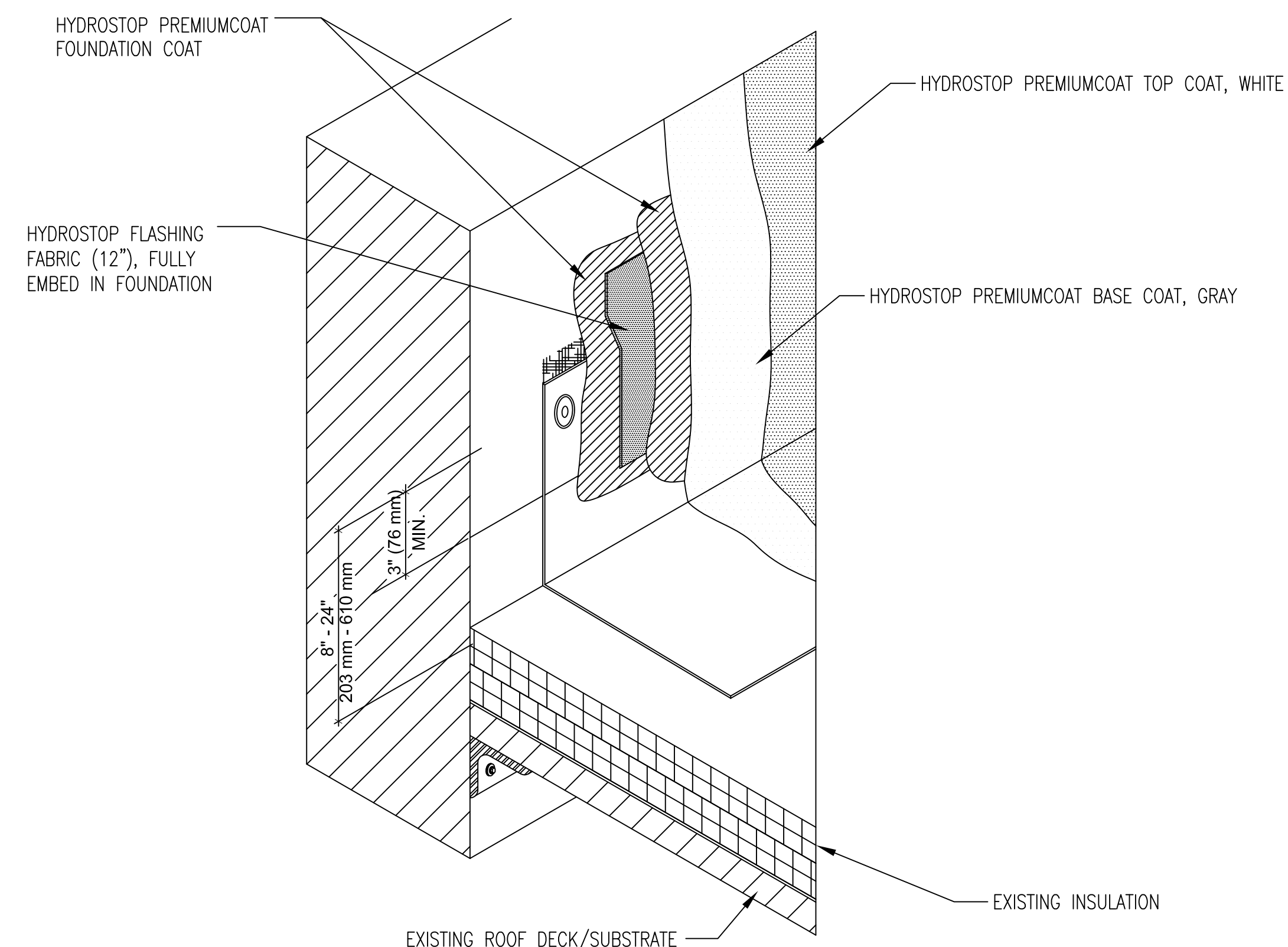




**NOTE:**

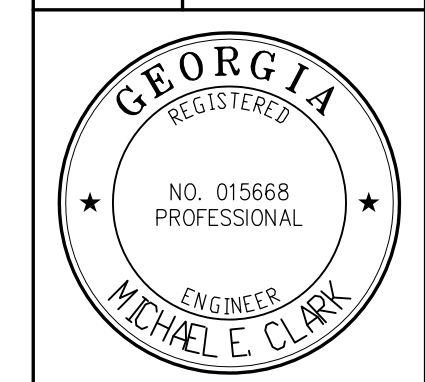
1. ALL FLASHING SHALL BE DESIGNED FOR THE APPLICABLE CONDITIONS. METAL THICKNESS, FASTENERS AND LAPPING SHALL BE AS SPECIFIED BY THE ROOF DESIGNER.
2. REFER TO THE SPECIFICATIONS FOR SPECIFIC EXECUTION REQUIREMENTS.
3. HYDROSTOP PREMIUMCOAT® SYSTEM – FOUNDATION COAT, FABRIC, FOUNDATION COAT, AND FINISH COAT COMPONENTS
4. PRIMING – REFER TO HYDROSTOP SPECIFICATIONS FOR DECK PRIMING REQUIREMENTS.

**1** FLASHING CONDITION AT DRIP EDGE W/ GUTTER  
 R2 | R4 SCALE: NONE



**2** ROOF-TO-WALL FLASHING CONDITION  
 R2 | R4 SCALE: NONE

DATE	REVISIONS



THIS DOCUMENT, THE IDEAS AND DESIGNS INCORPORATED HEREIN, IS AN INSTRUMENT OF PROFESSIONAL SERVICE IS THE PROPERTY OF THE JONES COUNTY BOARD OF COMMISSIONERS, AND IS NOT TO BE USED, IN WHOLE OR IN PART, FOR ANY OTHER PROJECT WITHOUT THEIR WRITTEN AUTHORIZATION.

**MEC&A**  
 MICHAEL E. CLARK & ASSOC., INC.  
 Building Enclosure Consultants  
 3643 Vineville Avenue  
 MACON, GEORGIA 31204  
 (478)471-6661 PHONE (478)471-6690 FAX

DETAILS  
 INSTALL NEW FLUID APPLIED MEMBRANE ROOF  
 JONES COUNTY GOVERNMENT CENTER  
 HIGHWAY 11  
 GRAY, GEORGIA

Drawn By	C. BELL
Checked By	MEC
Date	05/20/2022
Job No.	2022-13
Drawing Number	