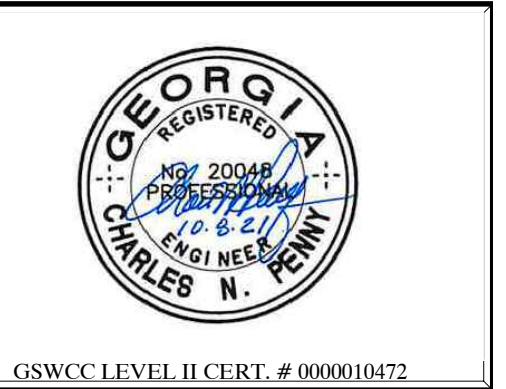


SITE DEVELOPMENT PLANS FOR
SPALDING COUNTY AQUATICS CENTER
LOCATED IN LANDLOT 238 OF THE 2nd DISTRICT, SPALDING COUNTY

The client acknowledges that these documents are the work papers of Paragon Consulting Group, Inc. and are their instruments of professional service. These documents shall not be reused or modified in any way without the prior written authorization of Paragon Consulting Group, Inc.

SHEET:
SITE PLAN

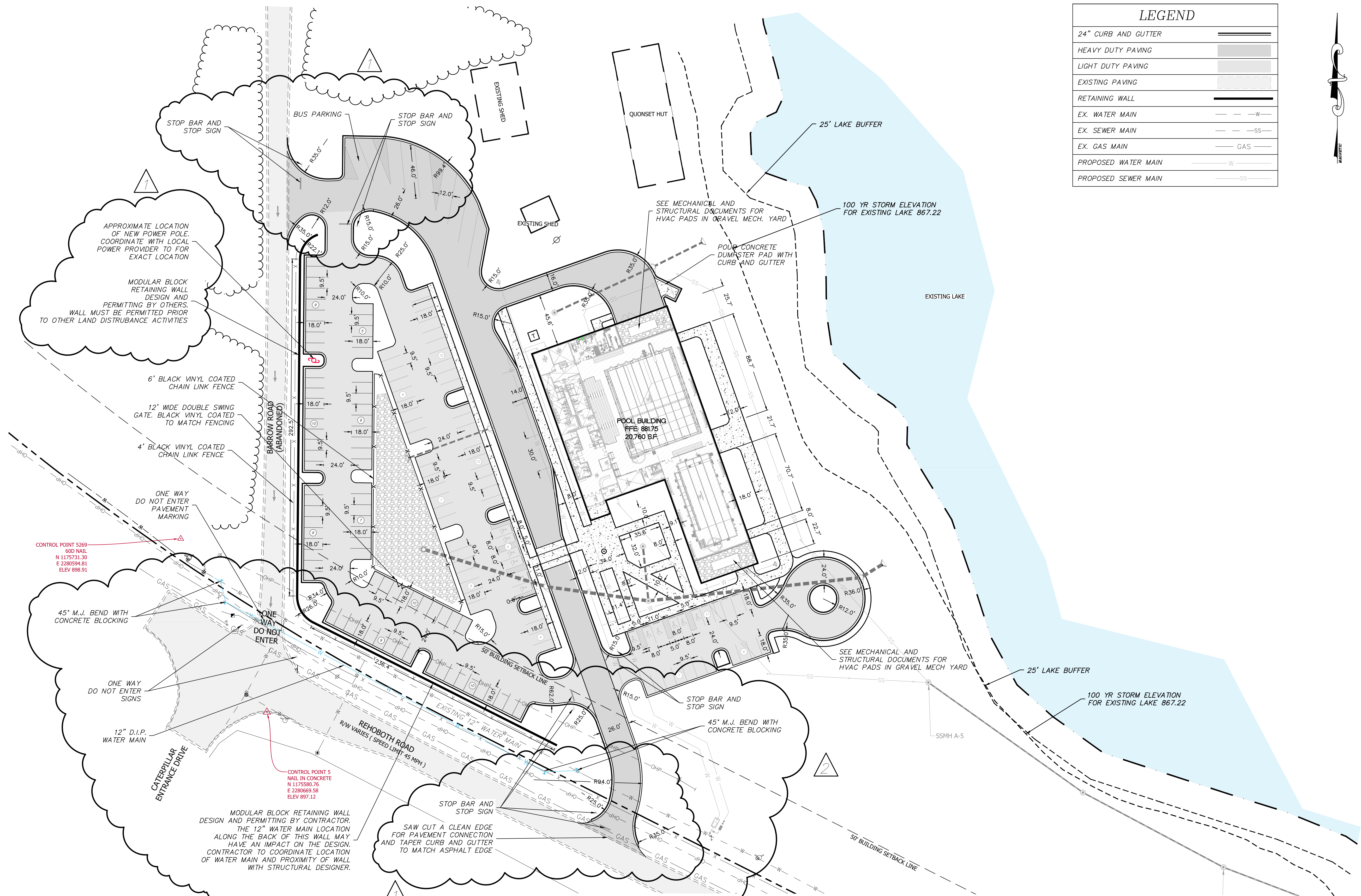
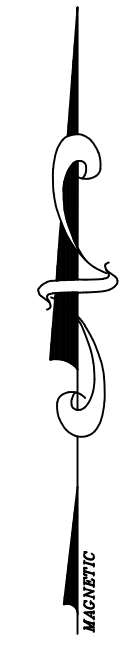
LICS #: PEF004167



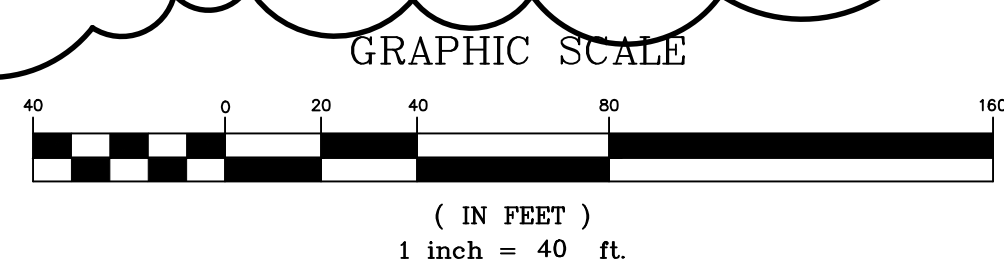
Project No. 20015.01 Issue Date: NOV. 2021
Drawn By: JLB Checked By: CNP

6
SHEET 6 OF 29

LEGEND	
24" CURB AND GUTTER	—
HEAVY DUTY PAVING	▨
LIGHT DUTY PAVING	▩
EXISTING PAVING	▧
RETAINING WALL	—
EX. WATER MAIN	---W---
EX. SEWER MAIN	---SS---
EX. GAS MAIN	---GAS---
PROPOSED WATER MAIN	—W—
PROPOSED SEWER MAIN	—SS—



SITE ADD ALTERNATE PLAN



41

No.	Revisions:	Date
1.	PERMITTING	12/15/21
2.	ADDENDUM 3	4/18/2022

APPROXIMATE LOCATION OF NEW POWER POLE. COORDINATE WITH LOCAL POWER PROVIDER TO FOR EXACT LOCATION

MODULAR BLOCK RETAINING WALL DESIGN AND PERMITTING BY OTHERS. WALL MUST BE PERMITTED PRIOR TO OTHER LAND DISTURBANCE ACTIVITIES

6" BLACK VINYL COATED CHAIN LINK FENCE
12" WIDE DOUBLE SWING GATE. BLACK VINYL COATED TO MATCH FENCING
4" BLACK VINYL COATED CHAIN LINK FENCE

ONE WAY DO NOT ENTER PAVEMENT MARKING

CONTROL POINT 5269
600 NAIL
N 1175731.30
E 2280594.81
ELEV 898.91

45° M.J. BEND WITH CONCRETE BLOCKING

ONE WAY DO NOT ENTER SIGNS

12" D.I.P. WATER MAIN

CITRILLAR ENTRANCE DRIVE

MODULAR BLOCK RETAINING WALL DESIGN AND PERMITTING BY CONTRACTOR. THE 12" WATER MAIN LOCATION ALONG THE BACK OF THIS WALL MAY HAVE AN IMPACT ON THE DESIGN. CONTRACTOR TO COORDINATE LOCATION OF WATER MAIN AND PROXIMITY OF WALL WITH STRUCTURAL DESIGNER.

CONTROL POINT 5
NAIL IN CONCRETE
N 1175580.76
E 2280669.58
ELEV 897.12

STOP BAR AND STOP SIGN

SAW CUT A CLEAN EDGE FOR PAVEMENT CONNECTION AND TAPER CURB AND GUTTER TO MATCH ASPHALT EDGE

SEE MECHANICAL AND STRUCTURAL DOCUMENTS FOR HVAC PADS IN GRAVEL MECH. YARD

POUR CONCRETE DUMPSTER PAD WITH CURB AND GUTTER

100 YR STORM ELEVATION FOR EXISTING LAKE 867.22

SEE MECHANICAL AND STRUCTURAL DOCUMENTS FOR HVAC PADS IN GRAVEL MECH. YARD

STOP BAR AND STOP SIGN

45° M.J. BEND WITH CONCRETE BLOCKING

100 YR STORM ELEVATION FOR EXISTING LAKE 867.22

50' BUILDING SETBACK LINE