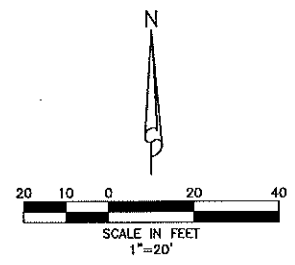


- LEGEND**
- EXISTING FPL CONCRETE POLE WITH LED FIXTURE AND 6' ARM.
 - NEW FPL CONCRETE POLE WITH LED FIXTURE AND 6' ARM. SEE DETAIL ON SHEET E-3.

- ELECTRICAL KEY NOTES:**
- 1 EXISTING LIGHT POLE SHALL BE REMOVED AND RELOCATED AS REQUIRED PER DRAWING.
 - 2 NEW CONCRETE LIGHT POLE WITH NEW LED FIXTURE. COORDINATE THE EXACT LOCATION IN THE FIELD WITH EXISTING UNDERGROUND UTILITIES.
 - 3 EXISTING LIGHT POLE AND FIXTURE SHALL BE RELOCATED IF NECESSARY TO CLEAR WAY FOR THE NEW SIDEWALK. OTHERWISE, CONTRACTOR SHALL BRACE POLE AS NEEDED TO SECURE THE POLE DURING CONSTRUCTION OF THE NEW STORM DRAIN PIPING.
 - 4 LOCATION OF RELOCATED LIGHT POLE. VERIFY EXACT LOCATION IN THE FIELD WITH THE NEW STORM DRAIN PIPING.

428"-48" H.D.P.E. @ 0.13%



Calculation Summary

Label	CalcType	Units	Avg	Max	Min	Avg/Min	Max/Min
UNIVERSE BLVD_Planar	Illuminance	Fc	1.06	3.0	0.3	3.53	10.00

Luminaire Schedule

Label	(MANUFAC)	Description	Arr. Lum.	Lumens	LLF	Lum. Watts
A	American Electric Lighting	ATBS P40 XXXXX R3 3K (EXISTING TO REMAIN)	9535		0.900	70
B	American Electric Lighting	ATBS P40 XXXXX R3 3K	9535		0.900	70

NOTE: ALL ELEVATIONS SHOWN HEREON ARE RELATIVE TO THE NATIONAL GEODETIC VERTICAL DATUM (N.G.V.D.) OF 1929 BASED ON A SURVEY PREPARED BY LIDBERG LAND SURVEYING, INC. (561) 746-8454

48 HOURS BEFORE DIGGING
 BROWARD • PALM BEACH • MIAMI • DADE
 ST. LUCIE • MARTIN COUNTIES
 1-800-432-4770
 SUNSHINE STATE 1 CALL
 UNDERGROUND UTILITIES
 NOTIFICATION CENTER

SEC Smith Engineering
 Consultants, Inc.
 2101 Palm Beach Lakes Blvd., Suite 512
 West Palm Beach, Florida 33409
 (561) 616-2811 fax (561) 616-3912
 www.smithengineeringconsultants.com

SIMMONS & WHITE
 ENGINEERING | PLANNING | CONSULTING | ARCHITECTURE
 2581 Melrose Blvd West • Suite 3 • West Palm Beach, Florida 33407 • (561) 478-7848

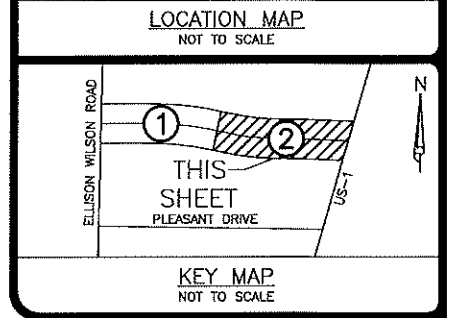
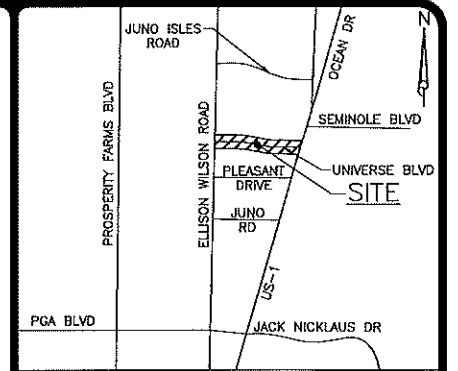
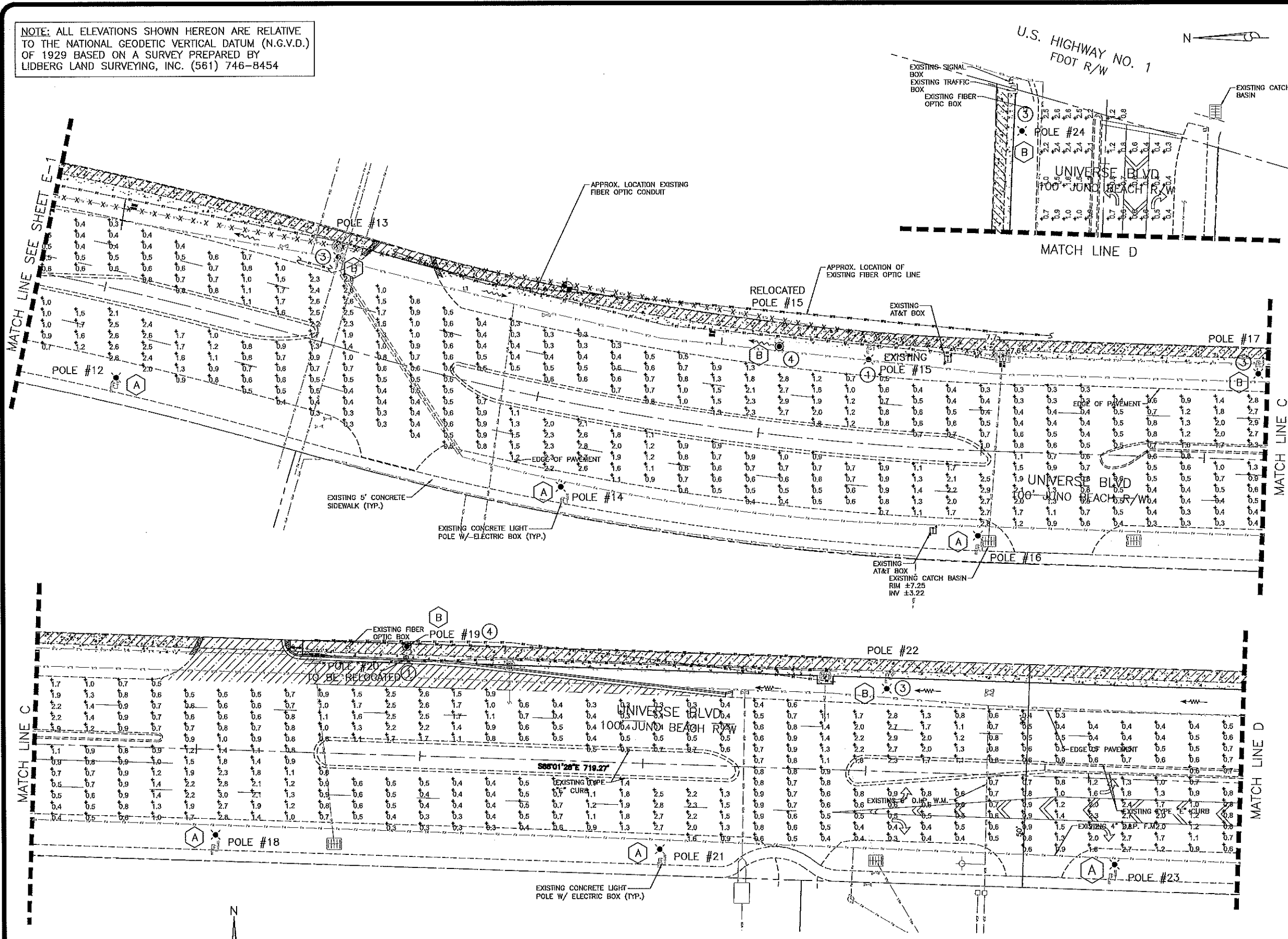
UNIVERSE BOULEVARD DRAINAGE
 IMPROVEMENT PLANS
 SECTION 33, TOWNSHIP 41S., RANGE 43E.
 TOWN OF JUNO BEACH, FLORIDA
 PHOTOMETRIC PLAN

REVISIONS	DESIGN	DRAWN	CHECKED	APPROVED	DATE
	SPH	SPH	LMS		

JOB NO. 16-004.8	DRAWING NO. 16004.8503	SHEET E-1	OF 3
---------------------	---------------------------	--------------	---------

T:\SEC 2022\22002 Simmons & White- Juno Beach, Universe Blvd Street Lighting\Electrical\DWG\S22002-E1.dwg 1/17/2023 9:31 AM Steve Hochman

NOTE: ALL ELEVATIONS SHOWN HEREON ARE RELATIVE TO THE NATIONAL GEODETIC VERTICAL DATUM (N.G.V.D.) OF 1929 BASED ON A SURVEY PREPARED BY LIDBERG LAND SURVEYING, INC. (561) 746-8454

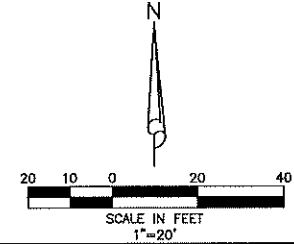


- LEGEND**
- EXISTING FPL CONCRETE POLE WITH LED FIXTURE AND 6' ARM.
 - NEW FPL CONCRETE POLE WITH LED FIXTURE AND 6' ARM. SEE DETAIL ON SHEET E-3.

- ELECTRICAL KEY NOTES:**
- 1 EXISTING LIGHT POLE SHALL BE REMOVED AND RELOCATED AS REQUIRED PER DRAWING.
 - 2 NEW CONCRETE LIGHT POLE WITH NEW LED FIXTURE. COORDINATE THE EXACT LOCATION IN THE FIELD WITH EXISTING UNDERGROUND UTILITIES.
 - 3 EXISTING LIGHT POLE AND FIXTURE SHALL BE RELOCATED IF NECESSARY TO CLEAR WAY FOR THE NEW SIDEWALK. OTHERWISE, CONTRACTOR SHALL BRACE POLE AS NEEDED TO SECURE THE POLE DURING CONSTRUCTION OF THE NEW STORM DRAIN PIPING.
 - 4 LOCATION OF RELOCATED LIGHT POLE. VERIFY EXACT LOCATION IN THE FIELD WITH THE NEW STORM DRAIN PIPING.

- ELECTRICAL NOTES:**
1. SEE SHEET E-1 FOR FIXTURE SCHEDULE.

48 HOURS BEFORE DIGGING
BROWARD • PALM BEACH • BOKAH RIVER
ST. LAZARE • MARTIN COUNTY
1-800-432-4770
SUNSHINE STATE • CALL
UNDERGROUND UTILITIES
NOTIFICATION CENTER



SEC Smith Engineering
Consultants, Inc.
State Auth. #82228
2181 Palm Beach Lakes Blvd., Suite 312
West Palm Beach, Florida 33409
(561) 816-3911 fax (561) 616-3912
www.smithengineeringconsultants.com

REVISIONS	DESIGN	DRAWN	CHECKED	APPROVED	DATE
	SPH	SPH	LMS		

SIMMONS & WHITE
ENGINEERING • PLANNING • CONSULTING • SINCE 1942
2581 Metrocenter Blvd West • Suite 3 • West Palm Beach, Florida 33407 • (561) 478-7648

UNIVERSEE BOULEVARD DRAINAGE
IMPROVEMENT PLANS
SECTION 33, TOWNSHIP 41S., RANGE 43E.
TOWN OF JUNO BEACH, FLORIDA
PHOTOMETRIC PLAN

JOB NO. 16-004.8
DRAWING NO. 16004.BS04
SHEET OF 3

T:\SEC 2022\22642\Simmons & White-Junoo Beach, Universe Blvd, Street Lighting Electrical Design\22642-ET.dwg 4/7/2023 2:49 PM Steve Heckman

