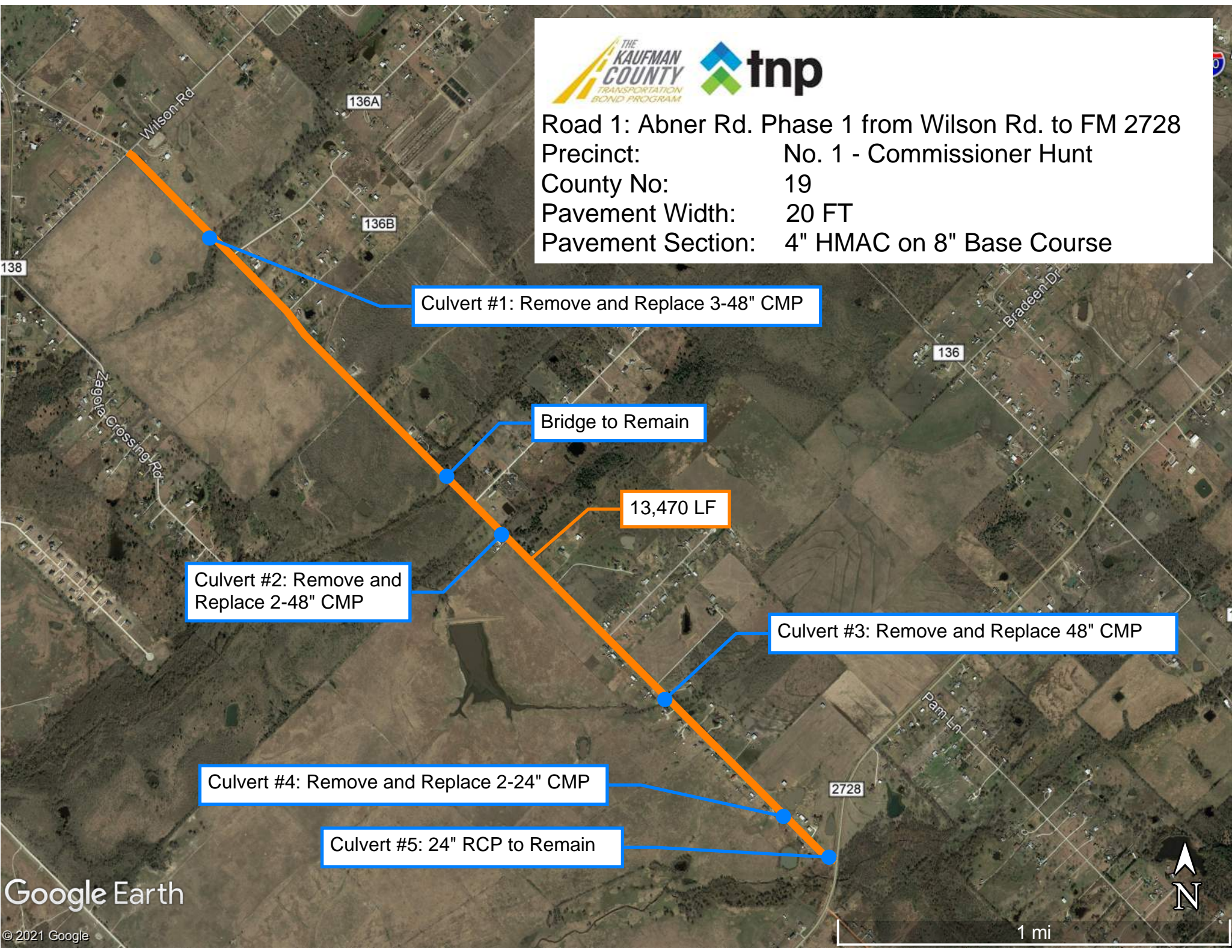




Road 1: Abner Rd. Phase 1 from Wilson Rd. to FM 2728
Precinct: No. 1 - Commissioner Hunt
County No: 19
Pavement Width: 20 FT
Pavement Section: 4" HMAc on 8" Base Course



Culvert #1: Remove and Replace 3-48" CMP

Bridge to Remain

13,470 LF

Culvert #2: Remove and Replace 2-48" CMP

Culvert #3: Remove and Replace 48" CMP

Culvert #4: Remove and Replace 2-24" CMP

Culvert #5: 24" RCP to Remain





Road 2: Abner Rd. Phase 2 from FM 2728 to FM 2727
Precinct: No. 1 - Commissioner Hunt
County No: 19
Pavement Width: 20 FT
Pavement Section: 4" HMAC on 8" Base Course

13,130 LF

Culvert #1: Remove and Replace 15" CMP

Culvert #2: Remove and Replace 48" CMP

Culvert #3: Remove and Replace 2-24" CMP

Culvert #4: Remove and Replace 24" CMP

Culvert #5: Remove and Replace 24" CMP

Culvert #6: Remove and Replace 42" CMP

Culvert #7: 2-24" RCP to Remain



Road 3: CR 109B from CR 108 to CR 109
Precinct: No. 1 - Commissioner Hunt
County No: 21
Pavement Width: 20 FT
Pavement Section: 4" HMAc on 8" Base Course

Culvert #1: Remove and Replace 1-24" CMP

5,640 LF

Culvert #2: Remove and Replace 2-30" CMP

Culvert #5: Remove and Replace 2-36" CMP

Culvert #3: Remove and Replace 1-18" CMP

Culvert #4: Remove and Replace 1-18" CMP

109



Road 4: CR 314 from IH 20 to US 80
Precinct: No. 3 - Commissioner Barber
County No: 45
Pavement Width: 20 FT
Pavement Section: 4" HMAc on 8" Base Course

Culvert #7:
24" RCP to Remain

Culvert #6: Remove and Replace 2-36" CMP

Culvert #5: Remove and Replace 12" CMP and 24" CMP

Culvert #4:
3-42" RCP to Remain

Culvert #3: Remove and Replace 2-36" CMP

Culvert #2: Remove and Replace 3-60" CMP

22,250 LF

Culvert #1: Remove and Replace 2-48" CMP and 1-42" RCP



Road 5: CR 322 from TX 34 to FM 429
Precinct: No. 3 - Commissioner Barber
County No: 46
Pavement Width: 20 FT
Pavement Section: 4" HMAC on 8" Base Course

Culvert #1: 24" RCP to Remain

Culvert #2: Remove and Replace 24" CMP

Culvert #3: Remove and Replace 54" CMP and 36" CMP

7,860 LF

Culvert #4: Remove and Replace 2-54" CMP and 36" CMP

Culvert #5: Remove and Replace 30" CMP



Road 6: CR 346 from FM 429 to FM 2728
Precinct: No. 3 - Commissioner Barber
Pavement Width: 20 FT
Pavement Section: 4" HMAC on 8" Base Course

Culvert #3: Remove and Replace 48" CMP

18,500 LF

Culvert #1: Remove and Replace 2-48" CMP

Culvert #2: Remove and Replace 48" CMP

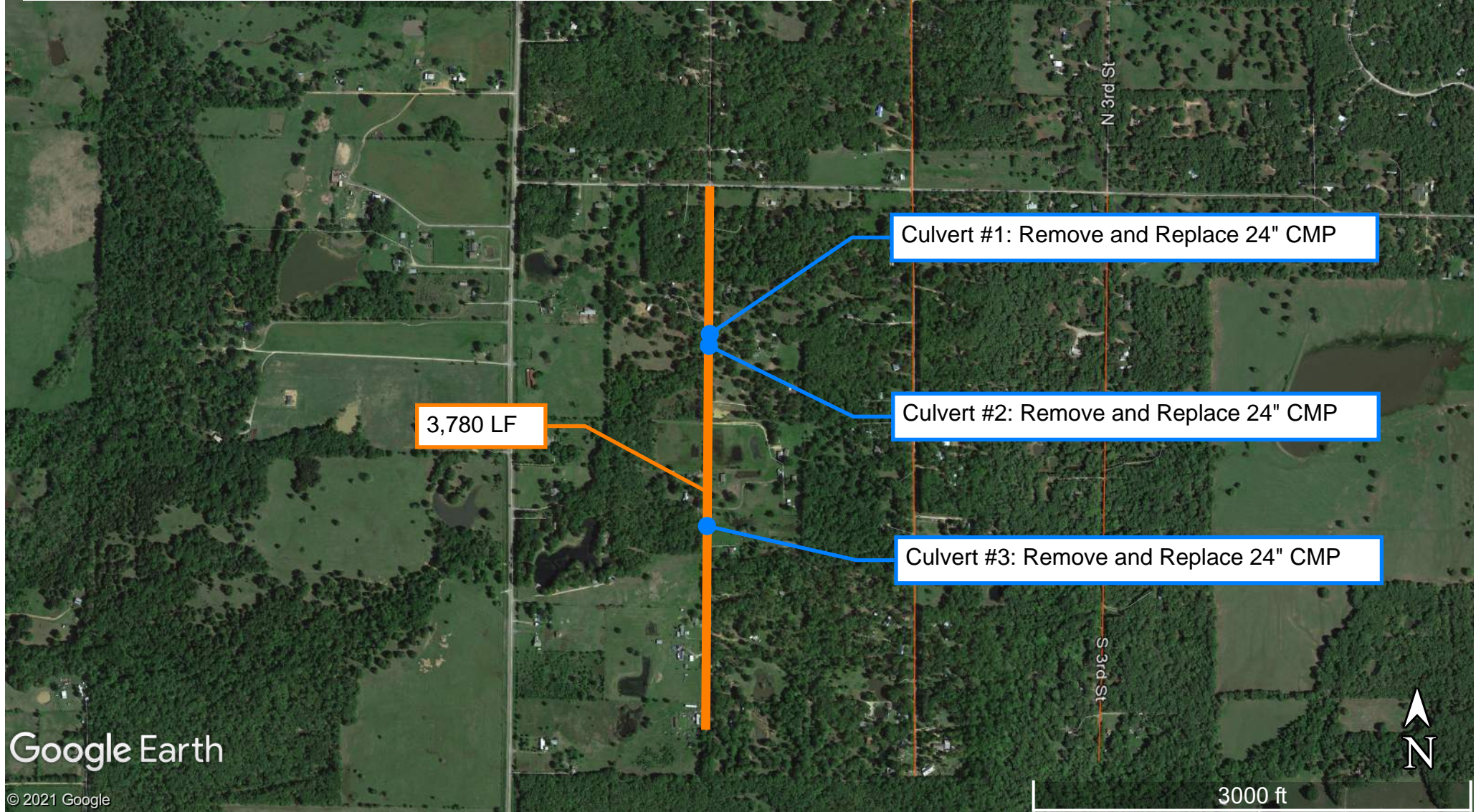
Culvert #4: Remove and Replace 18" CMP

Culvert #5: Remove and Replace 2-24" CMP

Culvert #6: Remove and Replace 24" CMP

Culvert #7:
24" RCP to Remain

Road 7: 1st Street from Oak Trail to South End
Precinct: No. 4 - Commissioner Cates
County No: 50
Pavement Width: 20 FT
Pavement Section: Double Chip Seal on 8" Base Course



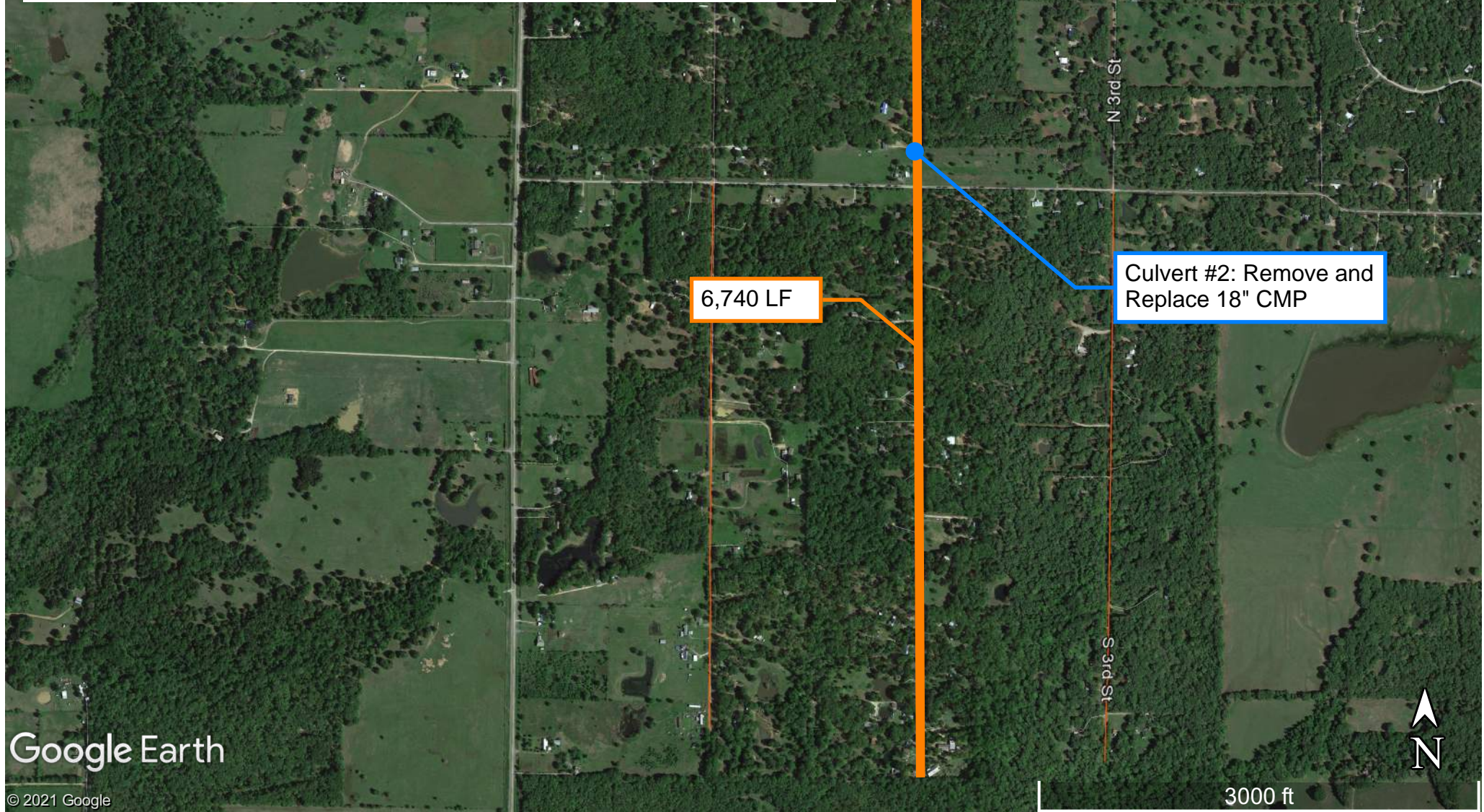
Road 8: 2nd Street from Lane Ave to South End

Precinct: No. 4 - Commissioner Cates

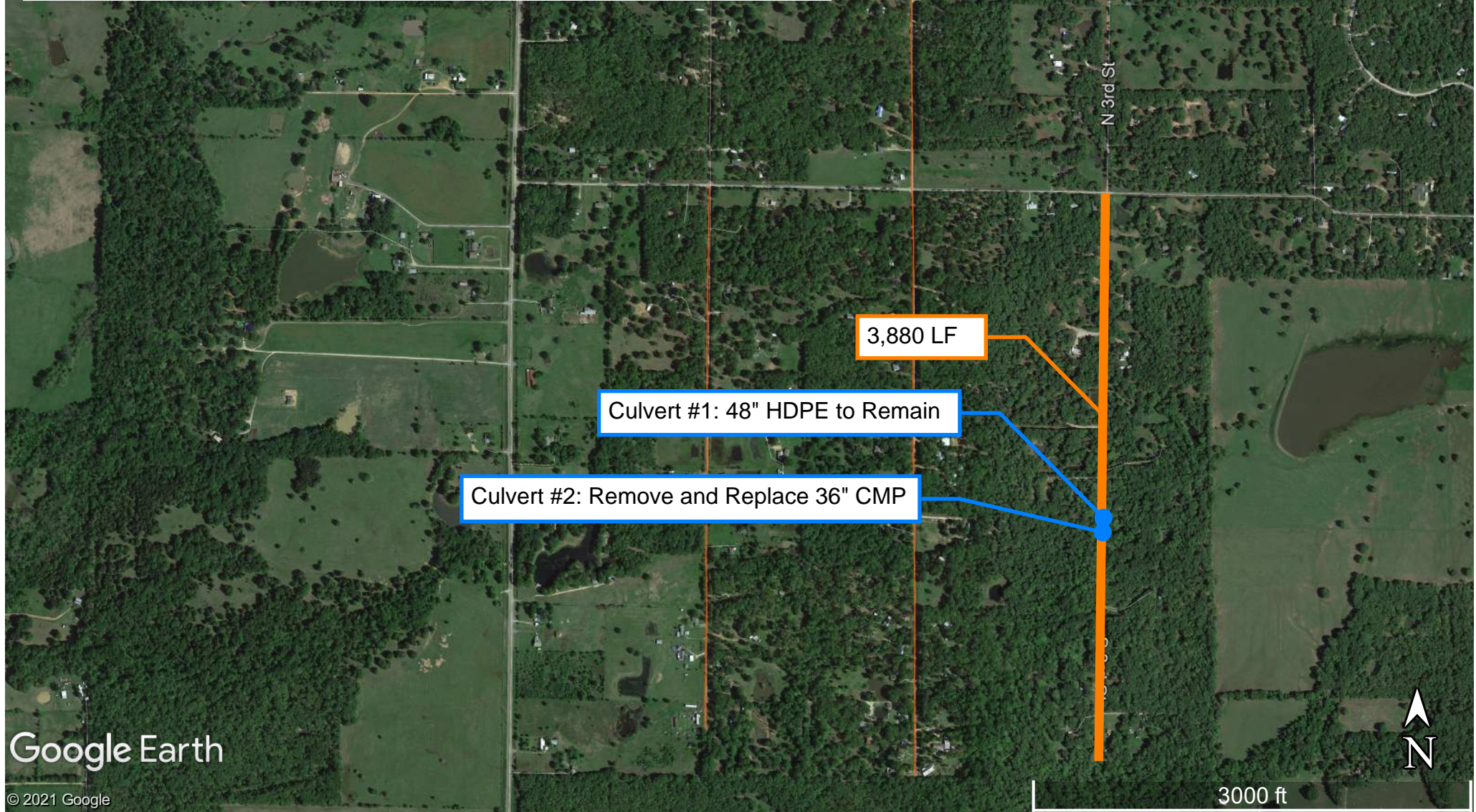
County No: 50

Pavement Width: 20 FT

Pavement Section: Double Chip Seal on 8" Base Course



Road 9: 3rd Street from Oak Trail to South End
Precinct: No. 4 - Commissioner Cates
County No: 50
Pavement Width: 20 FT
Pavement Section: Double Chip Seal on 8" Base Course





Road 10: CR 4101 from CR 4116 to FM 1390

Precinct: No. 4 - Commissioner Cates

County No: 54

Pavement Width: 20 FT

Pavement Section: Double Chip Seal on 8" Base Course

Culvert #1: Remove and Replace 3-48" CMP

Culvert #2: Remove and Replace 3-36" CMP

10,470 LF

Culvert #3: Remove and Replace 24" CMP

Culvert #4: Remove and Replace 30" CMP

Culvert #5: Remove and Replace 24" CMP

Culvert #6: 2-30" CMP to Remain



Road 11: CR 4102 from FM 148 to CR 4101
Precinct: No. 4 - Commissioner Cates
County No: 54
Pavement Width: 20 FT
Pavement Section: Double Chip Seal on 8" Base Course

Culvert #4: Remove and Replace 2-36" CMP

Culvert #5: Remove and Replace 36" CMP

7,090 LF

Culvert #3: Remove and Replace 48" CMP

Culvert #2: Remove and Replace 1-36" CMP

Culvert #1: 2-18" RCP to Remain



Road 12: CR 4104 from US 175 Frontage Rd. to FM 148
 Precinct: No. 4 - Commissioner Cates
 County No: 54
 Pavement Width: 20 FT
 Pavement Section: Double Chip Seal on 8" Base Course

Culvert #18: Remove and Replace 2-30" CMP
 Culvert #17: Remove and Replace 36" CMP

Culvert #16: Remove and Replace 18" CMP
 Culvert #15: Remove and Replace 18" CMP

Culvert #14: Remove and Replace 18" CMP

Culvert #13: Remove and Replace 24" CMP

11,930 LF

Culvert #12: Remove and Replace 30" CMP

Culvert #11: Remove and Replace 2-30" CMP

Culvert #5: Remove and Replace 24" CMP

Culvert #10: Remove and Replace 30" CMP
 Culvert #9: Remove and Replace 30" CMP
 Culvert #8: Remove and Replace 2-30" CMP
 Culvert #7: Remove and Replace 24" CMP

Culvert #1: Bridge to Remain

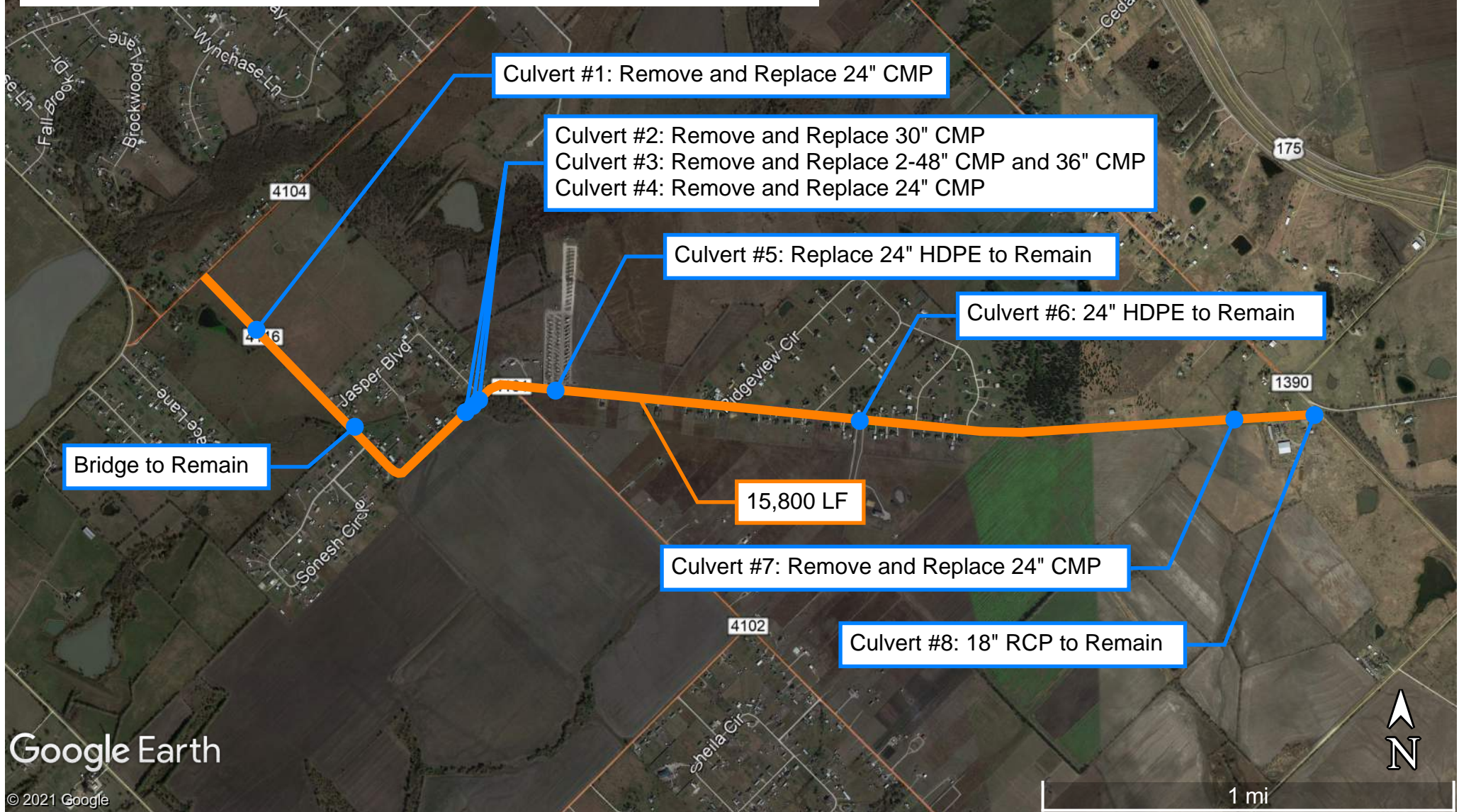
Culvert #6: Remove and Replace 24" CMP

Culvert #4: Remove and Replace 18" CMP
 Culvert #3: Remove and Replace 18" CMP

Culvert #2: Remove and Replace 24" CMP



Road 13: CR 4116 from CR 4104 to FM 1390
 Precinct: No. 4 - Commissioner Cates
 County No: 54
 Pavement Width: 20 FT
 Pavement Section: Double Chip Seal on 8" Base Course



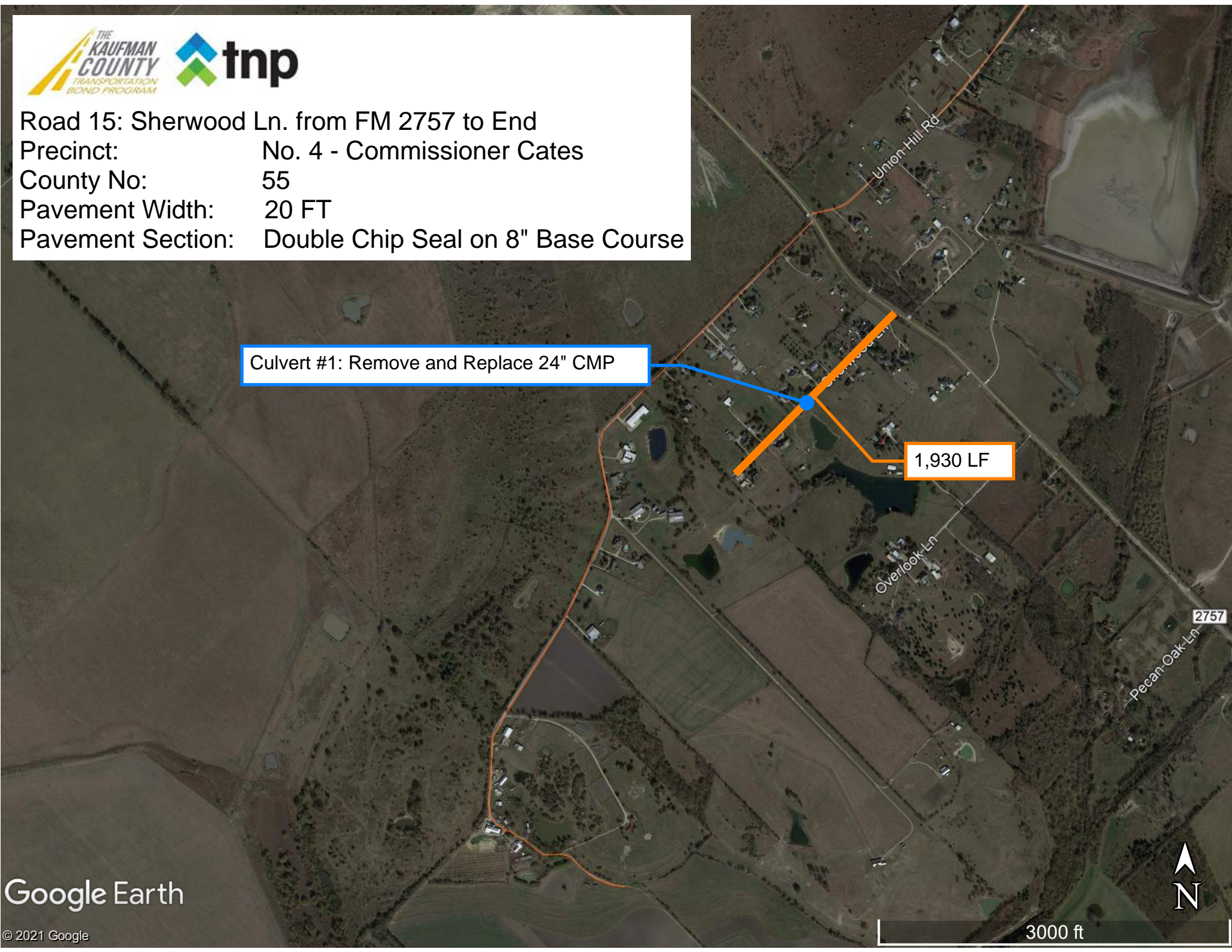
Road 14: Kelly Rd. from FM 2757 to End
Precinct: No. 4 - Commissioner Cates
County No: 55
Pavement Width: 20 FT
Pavement Section: Double Chip Seal on 8" Base Course



Road 15: Sherwood Ln. from FM 2757 to End
Precinct: No. 4 - Commissioner Cates
County No: 55
Pavement Width: 20 FT
Pavement Section: Double Chip Seal on 8" Base Course

Culvert #1: Remove and Replace 24" CMP

1,930 LF



Road 16: Union Hill Rd. from FM 2757 to End
Precinct: No. 4 - Commissioner Cates
County No: 55
Pavement Width: 20 FT
Pavement Section: Double Chip Seal on 8" Base Course

Culvert #3: Remove and Replace 48" CMP

Culvert #2: Remove and Replace 18" RCP

Culvert #1: Remove and Replace 2-36" CMP

3,770 LF

Sherwood Ln

2757



Road 17: CR 4007 from CR 4009 to County Line
Precinct: No. 4 - Commissioner Cates
County No: 59
Pavement Width: 20 FT
Pavement Section: Double Chip Seal on 8" Base Course

Culvert #1: Remove and Replace 24" CMP

Culvert #2: Remove and Replace 24" CMP

3,500 LF



Road 18: CR 4009 from CR 4007 to CR 4011
Precinct: No. 4 - Commissioner Cates
County No: 59
Pavement Width: 20 FT
Pavement Section: Double Chip Seal on 8" Base Course

Culvert #2: Remove and Replace 18" CMP

Bridge to Remain

Culvert #3: Remove and Replace 18" CMP

Culvert #4: Remove and Replace 18" CMP

Culvert #5: Remove and Replace 24" CMP
Culvert #6: Remove and Replace 24" CMP

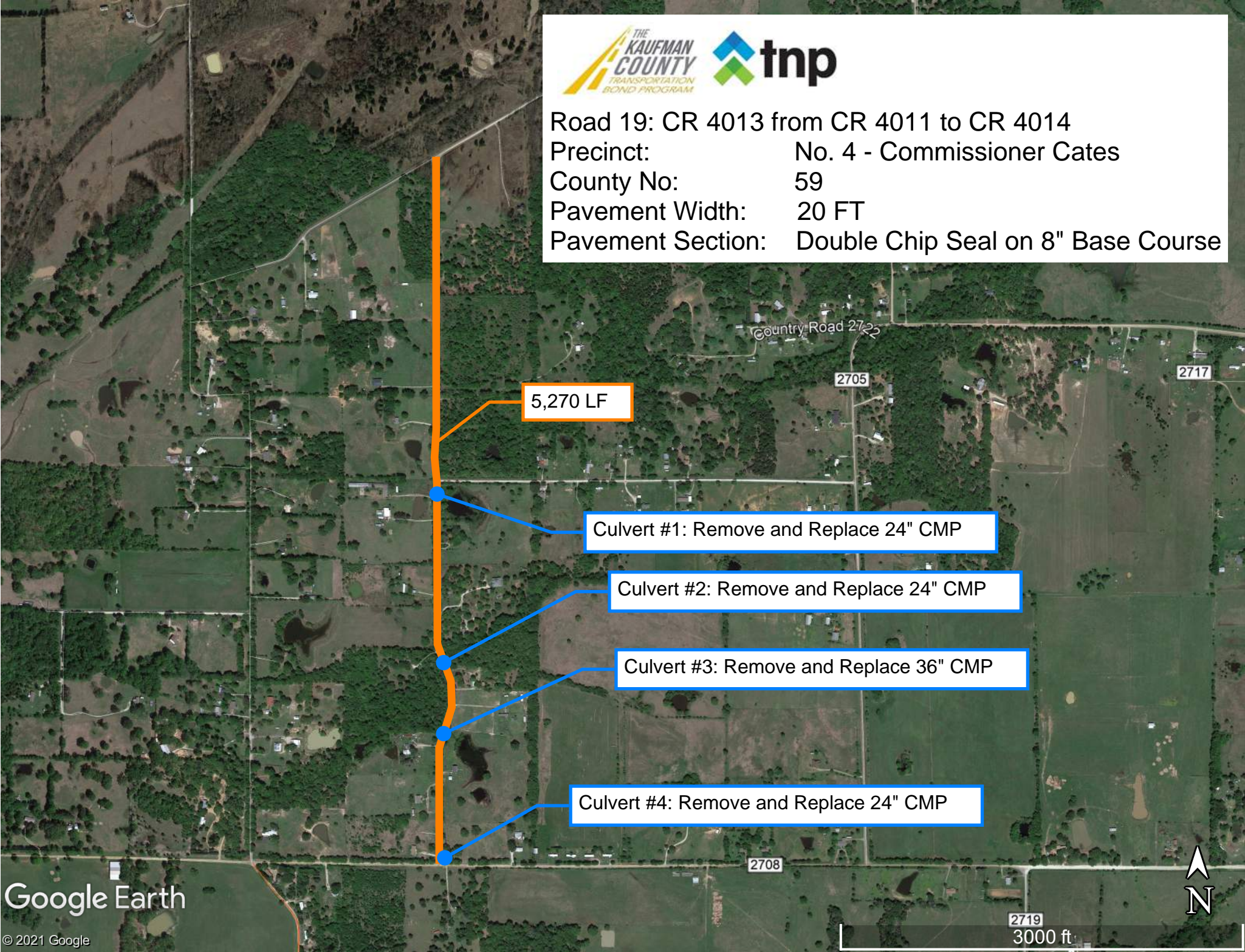
Culvert #1: Remove and Replace 24" CMP

9,450 LF





Road 19: CR 4013 from CR 4011 to CR 4014
Precinct: No. 4 - Commissioner Cates
County No: 59
Pavement Width: 20 FT
Pavement Section: Double Chip Seal on 8" Base Course



Road 20: CR 4015 from FM 90 to End
 Precinct: No. 4 - Commissioner Cates
 County No: 59
 Pavement Width: 20 FT
 Pavement Section: Double Chip Seal on 8" Base Course

Culvert #1: Remove and Replace 18" CMP
 Culvert #2: Remove and Replace 18" CMP

Culvert #4: Remove and Replace 24" CMP

Culvert #5: Remove and Replace 18" CMP
 Culvert #6: Remove and Replace 18" CMP

Culvert #3: Remove and Replace 18" CMP

Culvert #8: Remove and Replace 42" CMP and 2-48" CMP

Culvert #7: Remove and Replace 30" CMP

Culvert #9: Remove and Replace 12" CMP

Culvert #14: Remove and Replace 36" CMP
 Culvert #15: Remove and Replace 30" CMP
 Culvert #16: Remove and Replace 2-36" CMP

20,800 LF

Culvert #17: Remove and Replace 24" CMP

Culvert #10: Remove and Replace 48" CMP

Culvert #11: Remove and Replace 12" CMP

Culvert #12: Remove and Replace 12" CMP

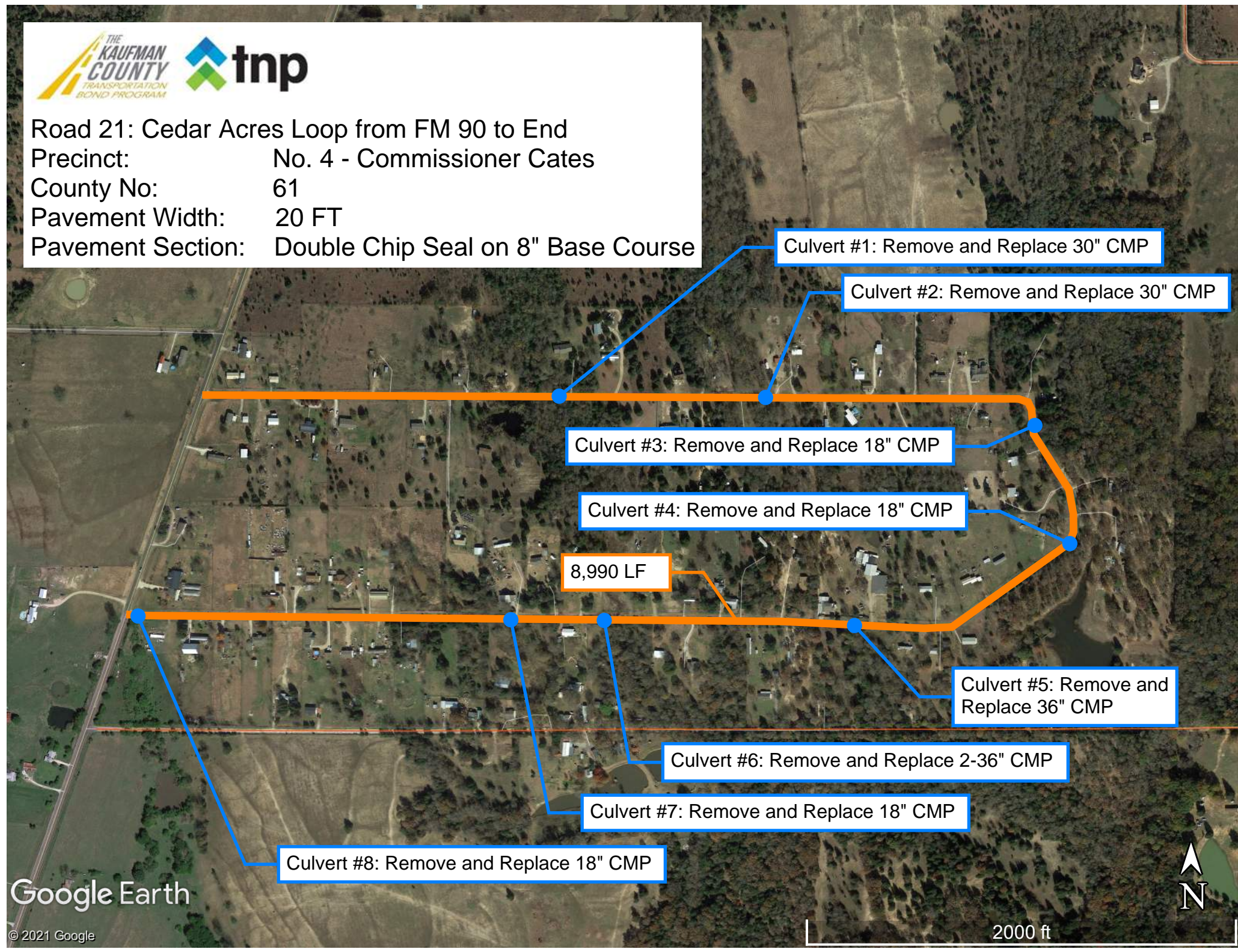
Culvert #13: Remove and Replace 12" CMP

Culvert #19: Remove and Replace 24" CMP

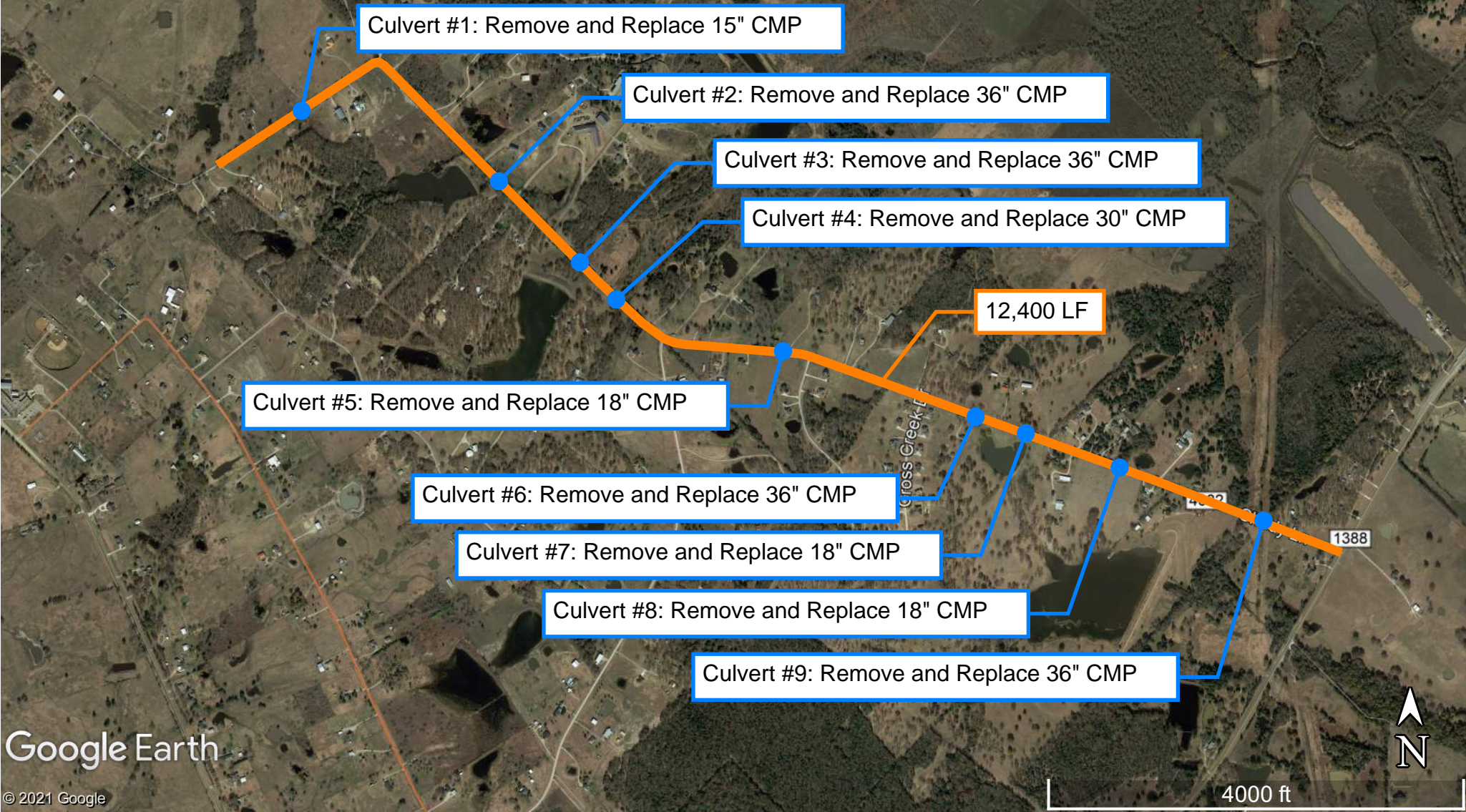
Culvert #18: Remove and Replace 30" CMP and 24" CMP



Road 21: Cedar Acres Loop from FM 90 to End
Precinct: No. 4 - Commissioner Cates
County No: 61
Pavement Width: 20 FT
Pavement Section: Double Chip Seal on 8" Base Course



Road 22: Shady Ln. from FM 1388 to City Limit
Precinct: No. 4 - Commissioner Cates
County No: 63
Pavement Width: 20 FT
Pavement Section: Double Chip Seal on 8" Base Course





Road 23: Silvercreek Dr. from FM 148 to Bluebonnet Dr.
Precinct: No. 4 - Commissioner Cates
County No: 63
Pavement Width: 18 FT Typical, 20 FT Where Shown
Pavement Section: 4" HMAC on 8" Base Course

Prop. Road 20 FT Wide at Intersection

Prop. Road 20 FT Wide at Bend

Culvert #6: 18" RCP to Remain

Culvert #5: Remove and Replace 2-15" CMP

Culvert #4: Remove and Replace 14" CMP

7,700 LF

Culvert #3: Remove and Replace 15" CMP

Culvert #2: Remove and Replace 15" CMP

Culvert #1: Remove and Replace 2-12" CMP

Prop. Road 20 FT Wide at Intersection





Road 24: CR 4090 from FM 1390 to TX 34
Precinct: No. 4 - Commissioner Cates
County No: 63
Pavement Width: 20 FT
Pavement Section: Double Chip Seal on 8" Base Course

Culvert #5: Remove and Replace 24" CMP

Culvert #6: Remove and Replace 18" CMP

Culvert #7: Remove and Replace 24" CMP

14,260 LF

Culvert #4: Remove and Replace 2-30" CMP

Culvert #8: Remove and Replace 18" CMP

Culvert #3: Remove and Replace 18" CMP

Culvert #9: Remove and Replace 18" CMP

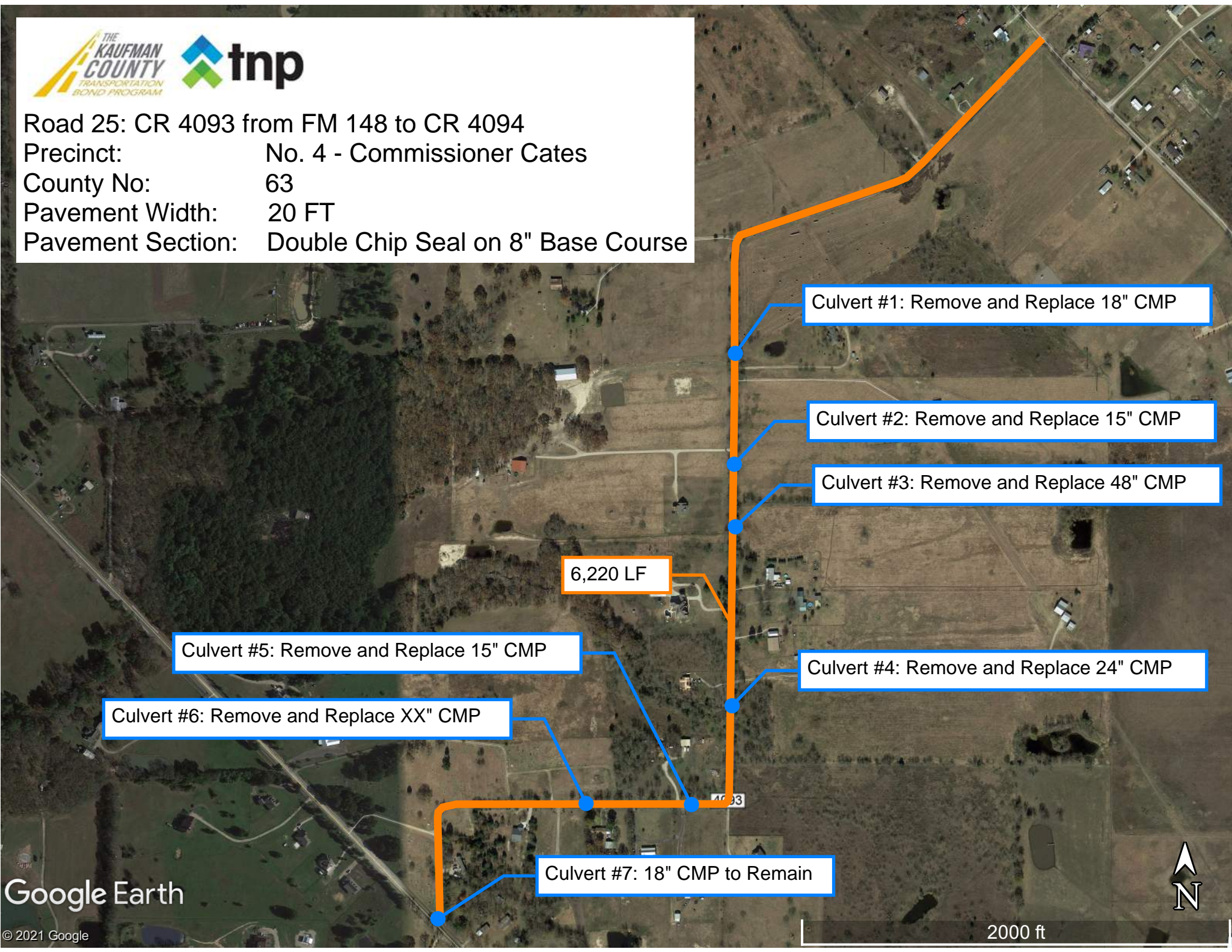
Culvert #2: Remove and Replace 24" CMP and 18" CMP

Culvert #1: 24" RCP to Remain

Culvert #10: 24" CMP to Remain



Road 25: CR 4093 from FM 148 to CR 4094
Precinct: No. 4 - Commissioner Cates
County No: 63
Pavement Width: 20 FT
Pavement Section: Double Chip Seal on 8" Base Course



6,220 LF

Culvert #1: Remove and Replace 18" CMP

Culvert #2: Remove and Replace 15" CMP

Culvert #3: Remove and Replace 48" CMP

Culvert #5: Remove and Replace 15" CMP

Culvert #4: Remove and Replace 24" CMP

Culvert #6: Remove and Replace XX" CMP

Culvert #7: 18" CMP to Remain

