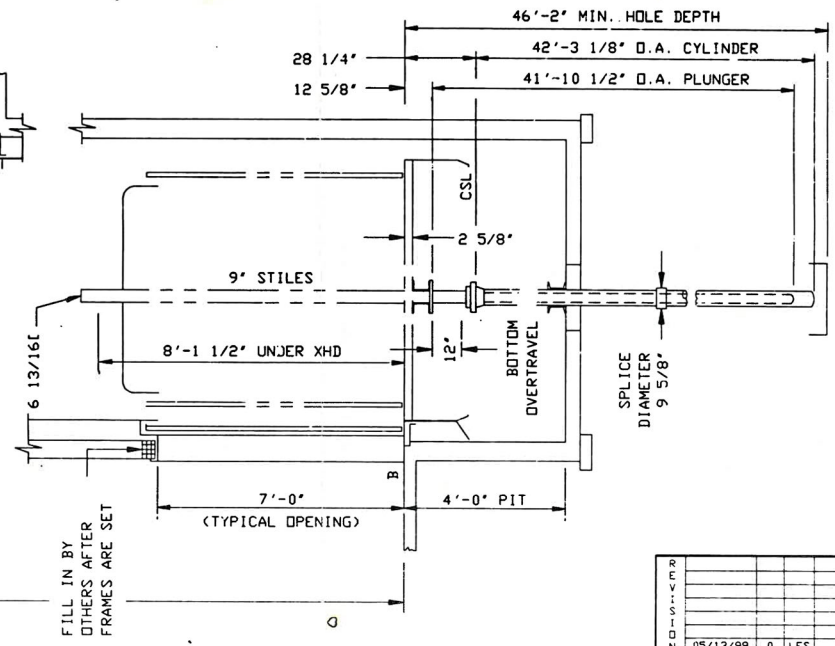


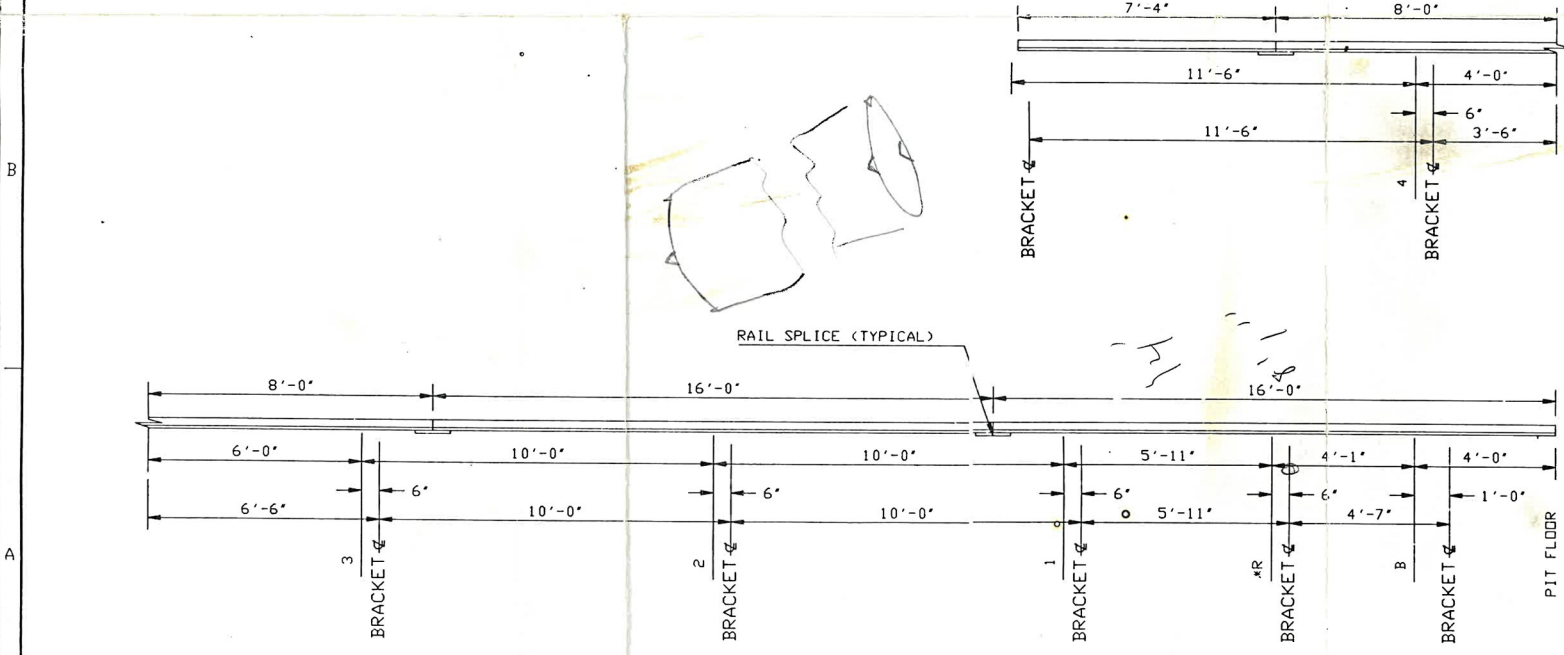
ENGINEERING NOTE: BOTTOM OF HOISTBEAM, IF PERMANENTLY INSTALLED, MUST BE ABOVE THE CLEAR OVERHEAD DIMENSION. THE α OF THE HOISTBEAM MUST BE ALIGNED WITH THE α OF THE GUIDE RAIL.

FLOOR NUMBER	FLOOR MARKING	FLOOR TO FLOOR DISTANCE
6	4	
5	3	10'-0"
4	2	10'-0"
3	1	10'-0"
2	*R	5'-11"
1	B	4'-1"

40'-0" TRAVEL



SECTION A-A
(NOT TO SCALE)



RAIL SPLICE (TYPICAL)

RAIL BRACKET AND STACK DETAIL

REV					
DATE	05/13/99	BY	LFS	DESCRIPTION	FINAL

APPROVED BY
MICHAEL TREANDR
ARCHITECTS, P.A.
05/13/99

APPROVAL SPACE

THIS INFORMATION IS CONFIDENTIAL AND REMAINS THE PROPERTY OF MONTGOMERY KONE INC. ITS USE, REPRODUCTION OR DISSEMINATION WITHOUT THE EXPRESS PERMISSION OF MONTGOMERY KONE INC. IS STRICTLY PROHIBITED.

Montgomery KONE™
Moline, IL 61265 U.S.A.

PROJECT: WILLARD HALL
LOCATION: PITTSBURG STATE UNIVERSITY PITTSBURG, KS
ENG./ARCH.: MICHAEL TREANDR ARCHITECTS LAWRENCE
CONTRACTOR: HOME CENTER CONSTRUCTION, INC. PITTSBURG

SCALE: AS NOTED
DRAWN: 672
DATE: 05/13/99
SHEET NO: 3 OF 7

CONTRACT NO: CP-97668
REV: 0

RAIL STACK SCALE: 3/8 in = 1.0 ft
UNITS SHOWN: in, ft-in

ENGINEERING NOTE: MAXIMUM BRACKET SPACING NOT TO EXCEED 16'-0"

DSW : 33-04-09-99