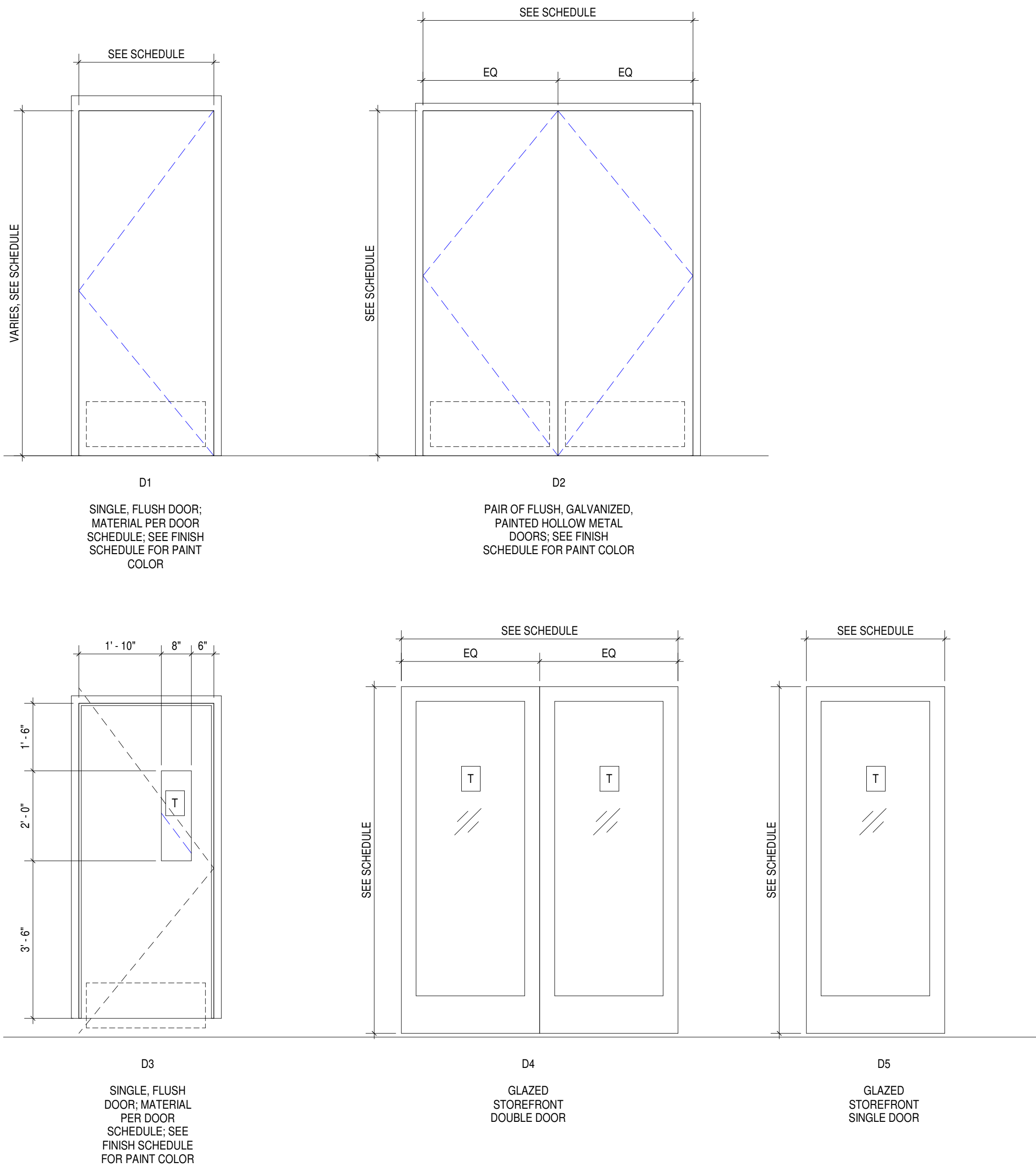


HOLLOW METAL DOOR FRAMES

1/2" = 1'-0"



DOOR TYPES

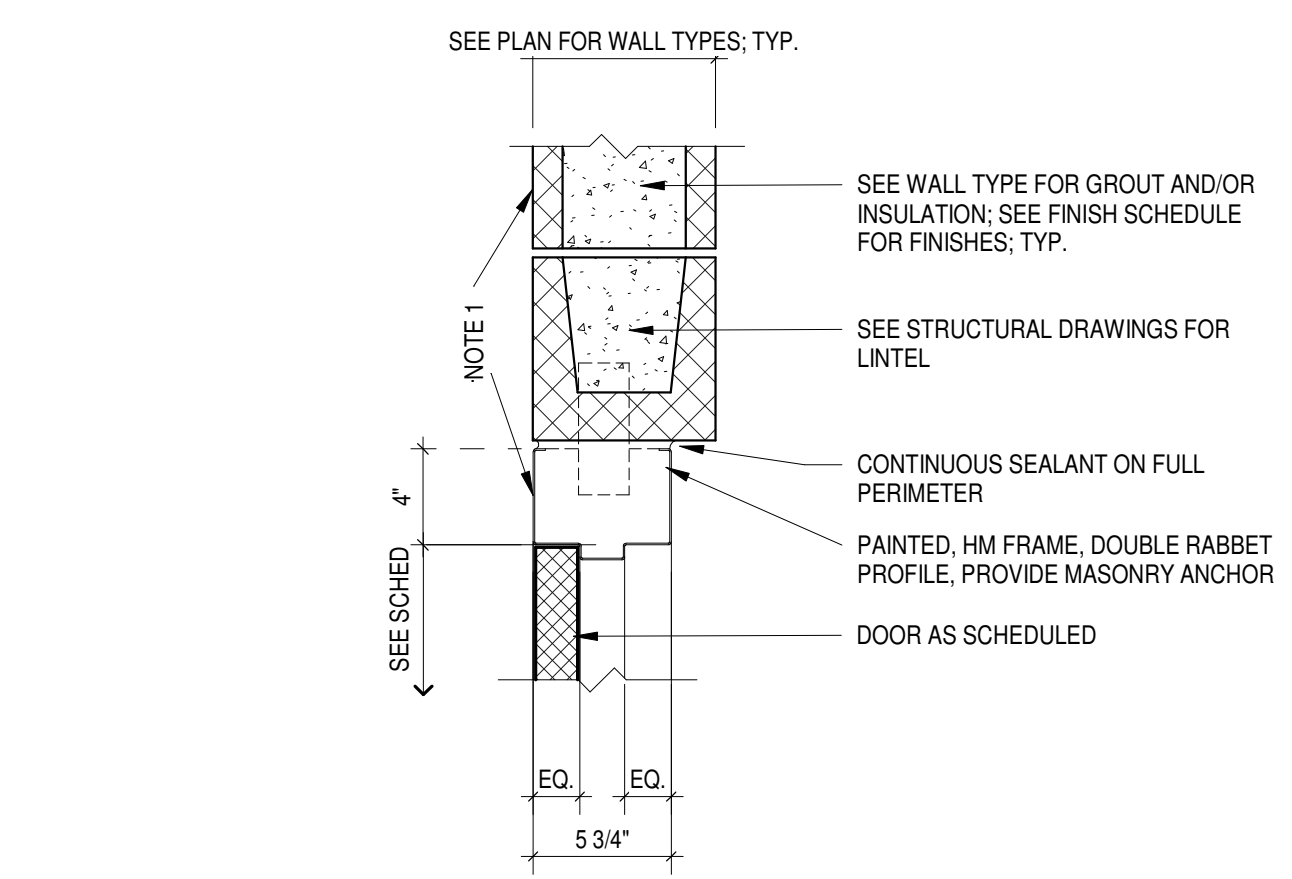
1/2" = 1'-0"

T = TEMPERED SAFETY GLAZING

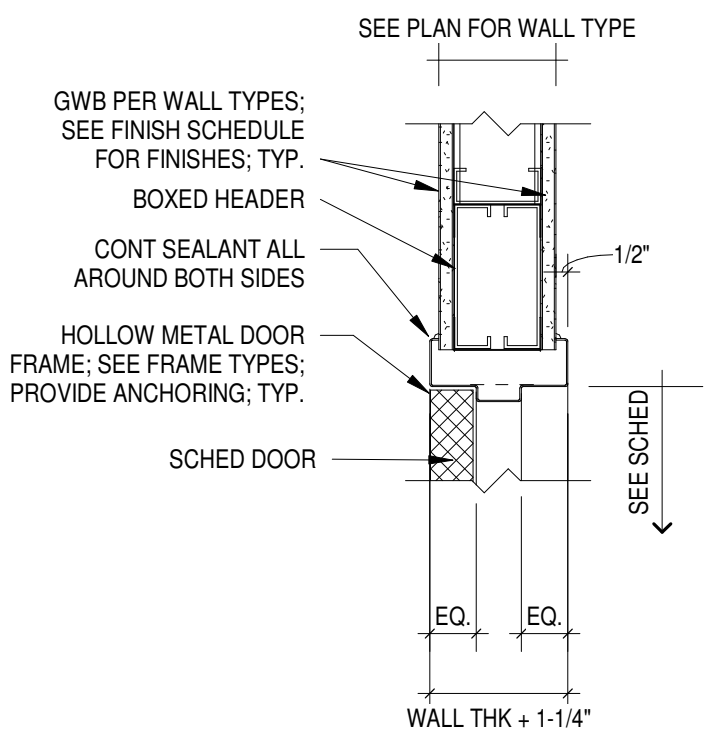
- DOOR AND FRAME NOTES:**
- INTERIOR HM FRAMES SHALL BE 16 GA. SHOP PRIMED STEEL. NOTE INSTANCES OF INTERIOR DOORS TO BE GALVANIZED.
 - EXTERIOR HM FRAMES SHALL BE 14 GA. GALVANIZED SHOP PRIMED STEEL.
 - ALL CORNERS OF EXTERIOR HM FRAMES SHALL BE SHOP (FULL) WELDED AND GROUND SMOOTH.
 - FLOOR ANCHORS ARE REQUIRED AT EACH HM FRAME.
 - THRESHOLDS SHALL BE 1/2" MAXIMUM HEIGHT.
 - HARDWARE PREPARATION: FACTORY PREPARE HOLLOW-METAL WORK TO RECEIVE TEMPLATED MORTISED HARDWARE; INCLUDE CUTOUTS, REINFORCEMENT, MORTISING, DRILLING, AND TAPPING ACCORDING TO SDI A250.6, THE DOOR HARDWARE SCHEDULE, AND TEMPLATES.

- HARDWARE SETS:**
- HW1: ENTRY FUNCTION; PANIC DEVICE; SEE SCHEDULE COMMENTS FOR INSTANCES OF ACCESS CONTROL
 - HW1.1: ENTRY FUNCTION (NO PANIC DEVICE)
 - HW2: PRIVACY FUNCTION
 - HW3: CLASSROOM FUNCTION; SEE SCHEDULE COMMENTS FOR INSTANCES OF ACCESS CONTROL
 - HW4: PASSAGE FUNCTION
 - HW5: STOREROOM FUNCTION
 - HW6: OFFICE FUNCTION

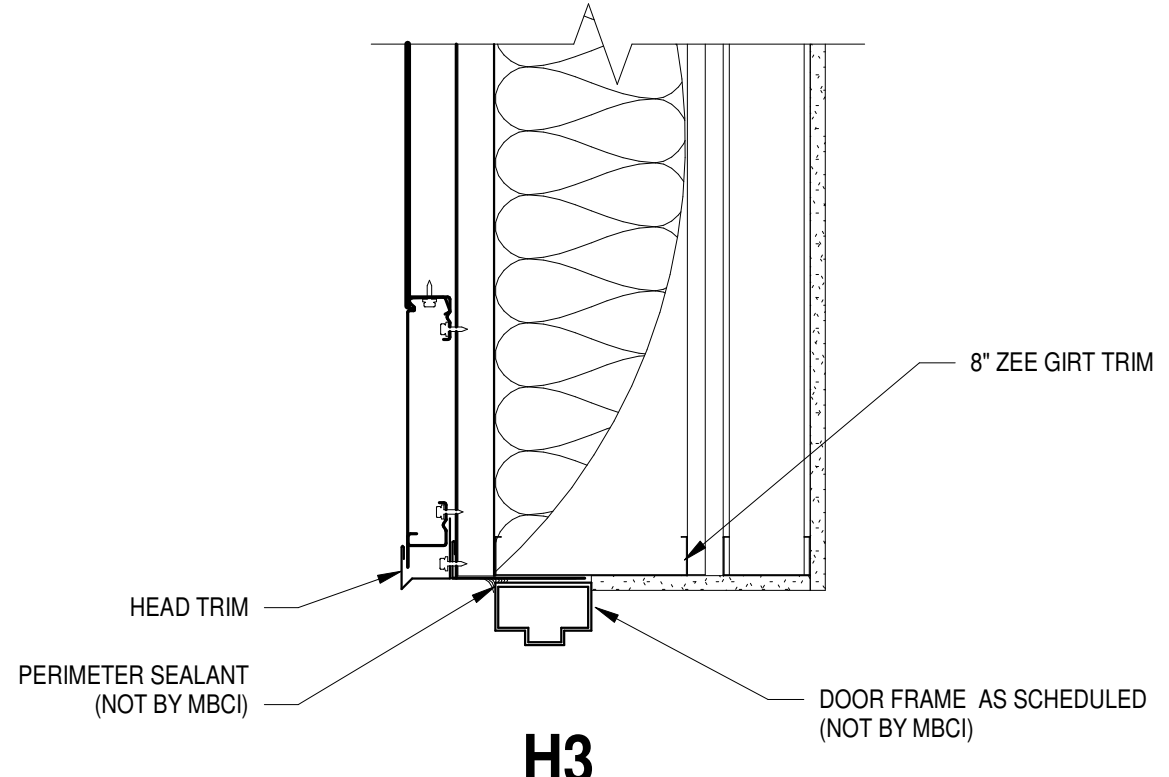
DOOR NO.	ROOM NO.	DOOR				FRAME		DETAILS		REMARKS	
		WIDTH	HEIGHT	TYPE	MATERIAL	HARDWARE TYPE	TYPE	MATERIAL	HEAD		JAMB
100A	100	6'-0"	7'-6"	D4	STOREFRONT	HW1	STOREFRONT	STOREFRONT	H3	J3	SEE STOREFRONT DETAILS FOR FRAME TYPE W6
100B	100	3'-0"	7'-6"	D5	STOREFRONT	HW1	STOREFRONT	STOREFRONT	H3	J3	SEE STOREFRONT DETAILS FOR FRAME TYPE W7
100C	100	3'-0"	7'-0"	D3	WOOD	HW1	F2	HM	H2	J2	HARDWARE TO BE CONDUCTIVE TO ACCESS CONTROL; SEE ELECTRICAL DWGS FOR COORDINATION
101	101	3'-0"	7'-0"	D1	WOOD	HW2	F2	HM	H2	J2	
102	102	3'-0"	7'-0"	D1	WOOD	HW5	F2	HM	H2	J2	
103	103	3'-0"	7'-0"	D3	WOOD	HW4	F2	HM	H2	J2	
104	104	3'-0"	7'-0"	D3	WOOD	HW6	F2	HM	H2	J2	
105	105	3'-0"	7'-0"	D3	WOOD	HW6	F2	HM	H2	J2	
107	107	3'-0"	7'-0"	D2	HM	HW5	F2	HM	H2	J2	
108A	108	3'-0"	7'-0"	D3	HM	HW1	F2	HM	H1	J1	HARDWARE TO BE CONDUCTIVE TO ACCESS CONTROL; SEE ELECTRICAL DWGS FOR COORDINATION
108B	108	3'-0"	7'-0"	D3	HM	HW3	F2	HM	H2	J2	HARDWARE TO BE CONDUCTIVE TO ACCESS CONTROL; SEE ELECTRICAL DWGS FOR COORDINATION
108C	108	3'-0"	7'-0"	D3	HM	HW1	F2	HM	H1	J1	HARDWARE TO BE CONDUCTIVE TO ACCESS CONTROL; SEE ELECTRICAL DWGS FOR COORDINATION
109	109	3'-0"	7'-0"	D1	HM	HW2	F2	HM	H2	J2	
110	110	3'-0"	7'-0"	D3	HM	HW3	F2	HM	H2	J2	HARDWARE TO BE CONDUCTIVE TO ACCESS CONTROL; SEE ELECTRICAL DWGS FOR COORDINATION
111	111	3'-0"	7'-0"	D1	HM	HW4	F2	HM	H2	J2	
112	112	3'-0"	7'-0"	D1	HM	HW4	F2	HM	H2	J2	
113	113	3'-0"	7'-0"	D1	WOOD	HW3	F2	HM	H2	J2	HARDWARE TO BE CONDUCTIVE TO ACCESS CONTROL; SEE ELECTRICAL DWGS FOR COORDINATION
114	114	3'-0"	7'-0"	D3	HM	HW1	F2	HM	H1	J1	HARDWARE TO BE CONDUCTIVE TO ACCESS CONTROL; SEE ELECTRICAL DWGS FOR COORDINATION
A100A	A100	3'-0"	7'-0"	D3	HM	HW1.1	F1	HM	H1	J1	
A100C	A100	3'-0"	7'-0"	D3	HM	HW4	F1	HM	H1	J1	
A101	A100	3'-0"	7'-0"	D1	HM	HW4	F1	HM	H1	J1	TREAT AS EXTERIORDOOR PER SPECIFICATION (INSULATE); FULLY GASKET
A102	A100	3'-0"	7'-0"	D1	HM	HW4	F1	HM	H1	J1	TREAT AS EXTERIORDOOR PER SPECIFICATION (INSULATE); FULLY GASKET
A103	A103	3'-0"	7'-0"	D1	HM	HW4	F1	HM	H1	J1	TREAT AS EXTERIORDOOR PER SPECIFICATION (INSULATE); FULLY GASKET
A104	A104	3'-0"	7'-0"	D8	HM	HW1	F1	HM	H1	J1	
A105	A105	3'-0"	7'-0"	D1	HM	HW5	F1	HM	H1	J1	
H001	H001	3'-0"	7'-0"	D2	HM	HW5	F1	HM	H1	J1	
H002	H002	3'-0"	7'-0"	D2	HM	HW5	F1	HM	H1	J1	
H100A	H100	3'-0"	7'-0"	D3	HM	HW1.1	F1	HM	H1	J1	
H101A	H101	3'-0"	7'-0"	D3	HM	HW4	F1	HM	H1	J1	
H101B	H101	3'-0"	7'-0"	D3	HM	HW1	F1	HM	H1	J1	
H101C	H102	3'-0"	7'-0"	D3	HM	HW4	F1	HM	H1	J1	
H101D	H101	3'-0"	7'-0"	D3	HM	HW1	F1	HM	H1	J1	
H102	H102	3'-0"	7'-0"	D3	HM	HW1	F1	HM	H1	J1	
I100A	I100	3'-0"	7'-0"	D3	HM	HW1.1	F1	HM	H1	J1	
I100B	I100	3'-0"	7'-0"	D3	HM	HW1	F1	HM	H1	J1	



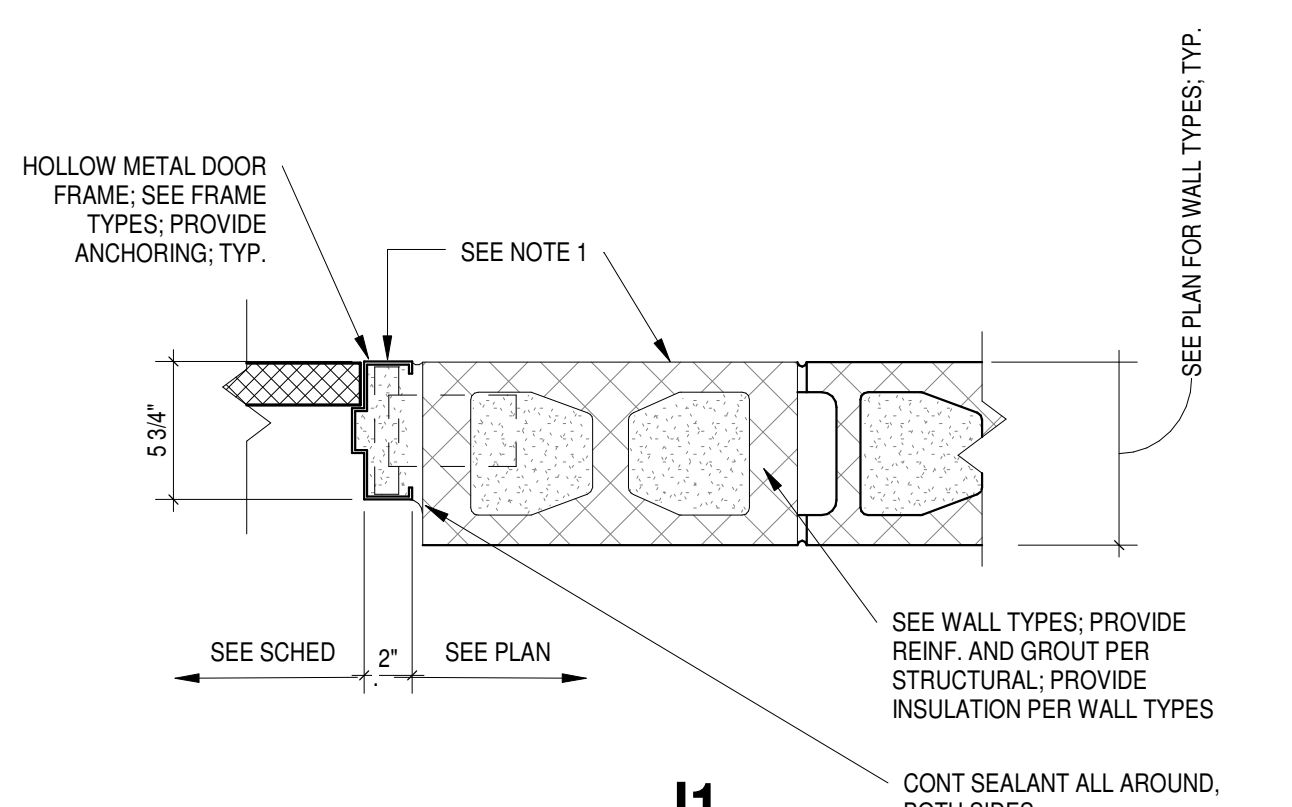
H1



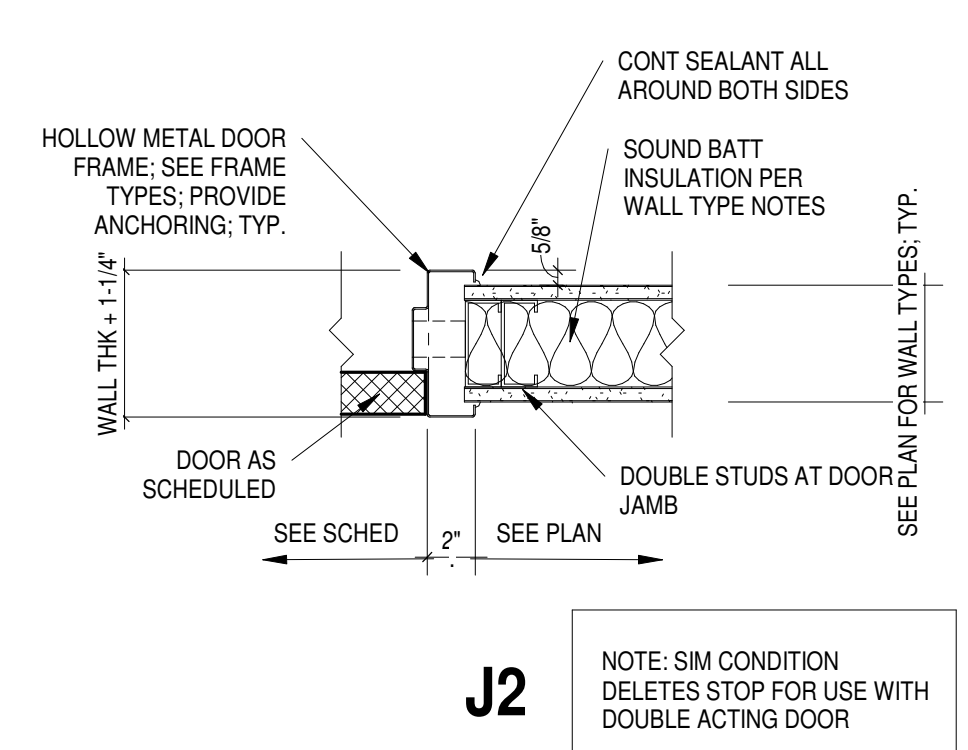
H2



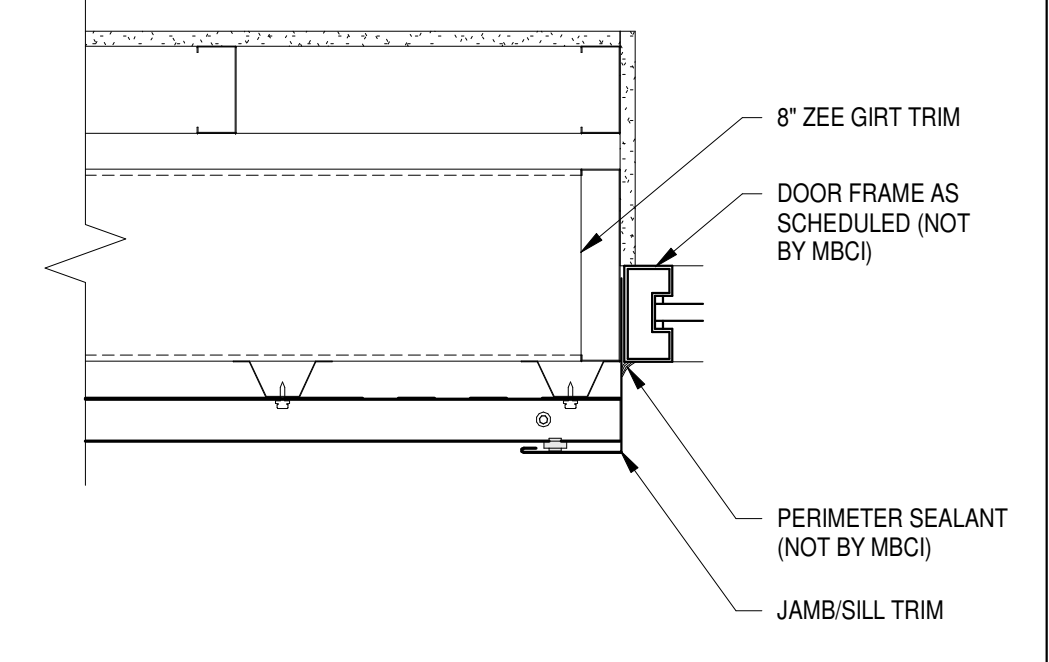
H3



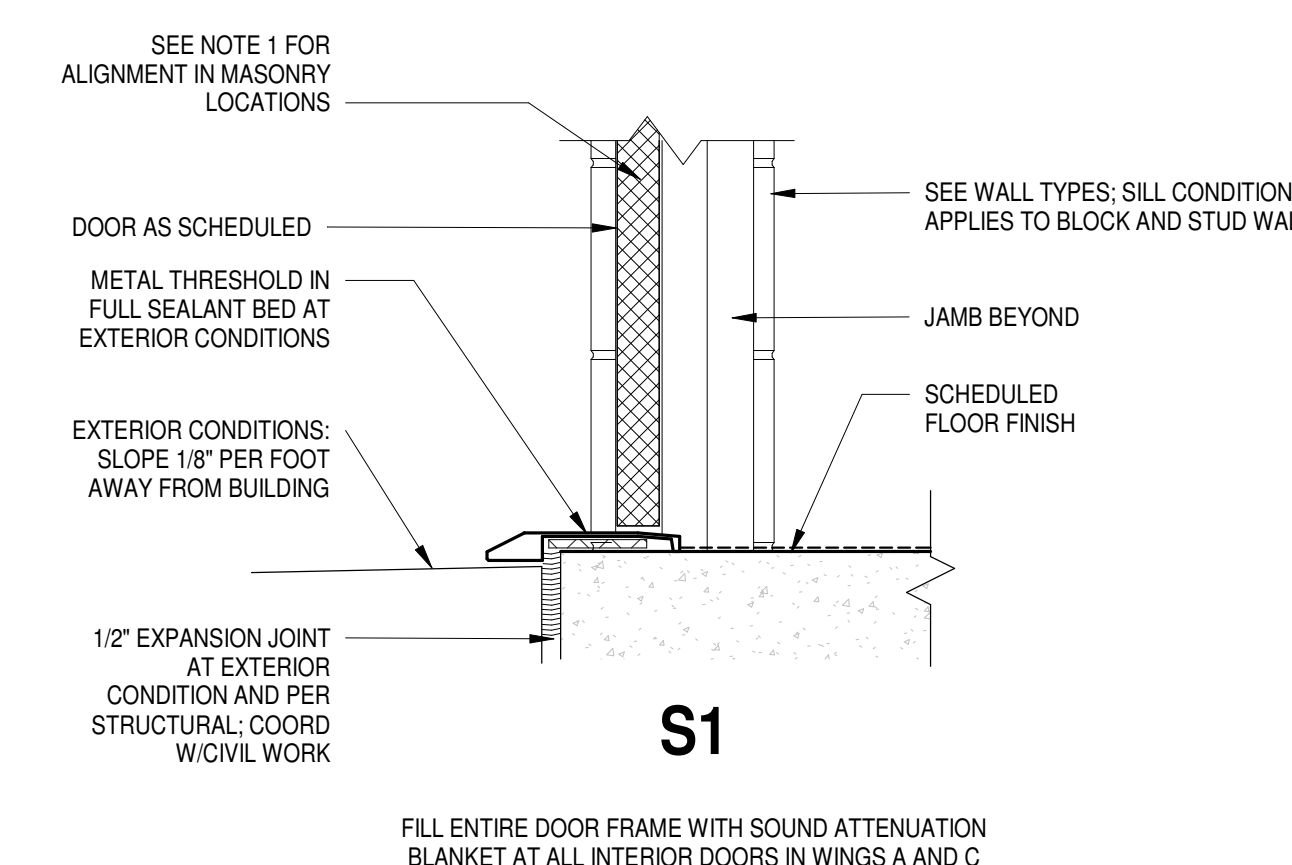
J1



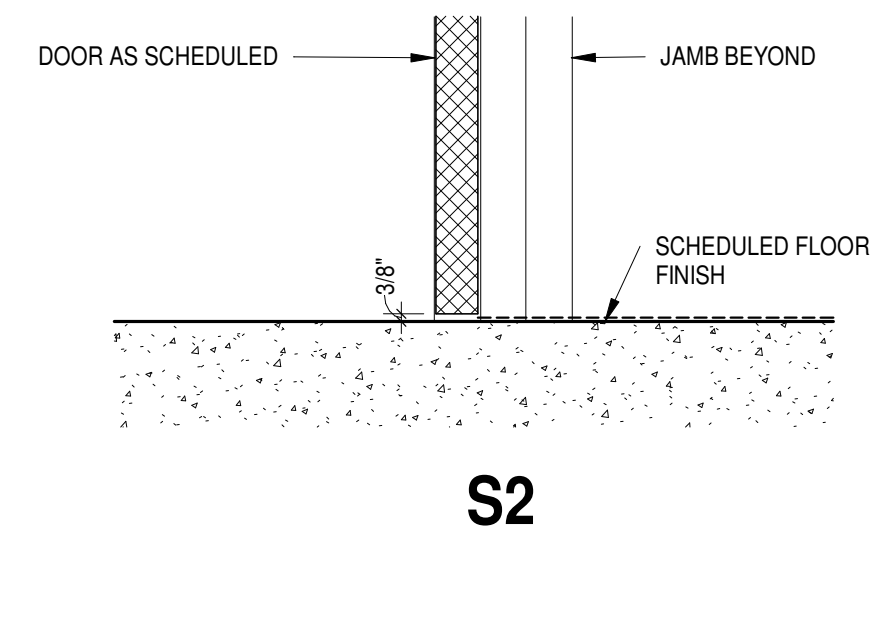
J2



J3

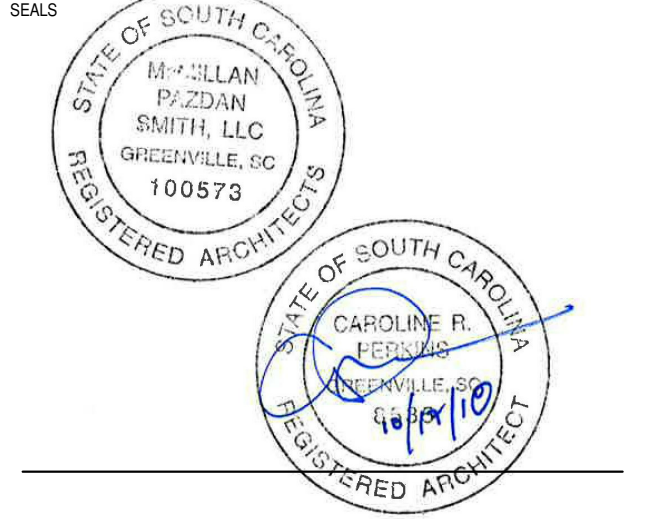


S1



S2

NOTE 1: ALIGN SWING SIDE DOOR FRAME WITH OUTSIDE FACE OF WALL ON ALL BLOCK WALLS, U.O.N.



LANCASTER COUNTY
LANCASTER ANIMAL SHELTER
LANCASTER, SC

SHEET ISSUE:

NO.	DATE	DESCRIPTION	BY
A	07/06/18	ISSUE FOR PRICING	
B	09/14/18	COORDINATION	
1	10/17/18	ISSUE FOR BID AND PERMIT	

ISSUE FOR BID AND PERMIT 10/17/18

PRINCIPAL IN CHARGE: PROJECT ARCHITECT: APPROVER: Checker

DRAWN BY: AUTHOR: Author

SHEET TITLE:
DOOR FRAMES, TYPES, AND SCHEDULE

SHEET NO. PROJ. NO. 018095.00

A800